

RECEIVED
MAR 12 2008
Gold Commissioner's Office
VANCOUVER, B.C.

BC Geological Survey
Assessment Report
29758



Le Baron Prospecting
Port Renfrew, BC

Prospecting, Technical and Geochemical Assessment Report

Le Baron Prospecting
Le Baron #1 + #2 // #509083 + #509084
Vancouver Island, British Columbia

Victoria Mining Division
NTS: 092C058 / 092C059
48 degrees - 32' - 34" west x 124 degrees - 23' - 21" north



Owners / Operator:
Scott Phillips / Bob Morris
Le Baron Prospecting
16977 Tsonaquay Dr
Port Renfrew BC
V0S-1K0

Author: Scott Phillips: CEO: Le Baron Prospecting

Date: December 13, 2007

2007

29758
GEOLOGICAL SURVEY OF CANADA
ASSESSMENT REPORT



**Le Baron Prospecting
Port Renfrew BC.**

Table of Contents:

Cover Page	pg 1
Table of Contents	pg 2
Introduction and Terms of Reference	1.0
Tenure Location	2.0
Prospecting Summary 2007	3.0
Regional geology and Structure	4.0
Area faults	5.0
Felsic sills	6.0
Mineralization	7.0
Prospecting Program overview	8.0
Exploration and sampling methods	9.0
Sample specific technical information	10.0
Other tenure work	11.0
Statement of Costs	12.0
Other information / surface and subsurface	13.0
Tenure ownership	14.0
Pending mediation	15.0
Privacy	16.0
Looking ahead	17.0
Option agreements	18.0
Possible economic deposit	19.0
Historic Exploration	20.0
Present exploration Port Renfrew	21.0
Follow up recommendations	22.0
Author	23.0
Acknowledgments / reference information	24.0
<i>Figures: Reference mapping.</i>	
Figure 1 – Mineral Tenures Vancouver Island – 1-250,000	
Figure 2 – Tenure #509083, #509084 – 1-25,000	
Figure 3 – Prospecting area overview – subject area - 1-12,500	
Figure 4 – Working map – 1-5,000	
Figure 5 – Working map – 1-5,000	
Figure 6 – Working map – 1-5,000	
Figure 6 - A – Working map – 1-2,500 – grid survey	
Figure 7 – Working map – 1-5,000	
 <i>ALS Chemex Certificates of Analysis: Analytical procedure PGM-ICP-23</i>	
Certificate numbers / VA07150705, VA07150706, VA07150707	<i>Appendix 1</i>
 <i>Photos</i>	<i>Appendix 2</i>
 <i>E-mail conformation of event / MTO</i>	<i>Appendix 3</i>

1.0 Introduction and Terms of Reference:

The author is the owner of these two mineral tenures within the Victoria Mining District located on south western Vancouver Island. The tenure owner along with one of his associates conducted an exploration program on these tenures during the 2007 prospecting year. Detailed information is contained within this report.

This report is correct in the information within and any use of this information to a second or third party is the responsibilities of those parties.

2.0 Tenure Location:

Both of these large mineral tenures are located directly south of the town of Port Renfrew BC, which is approximately located 100 kilometers west of Victoria BC. Port Renfrew is a small town of approximately 200 residents, growing in the summer months due to the areas abundance of recreational opportunities such as fishing and camping and hiking.

These mineral tenures are two large adjoining blocks. Le Baron #1 [tenure #509083] is 513.44 ha in size, and Le Baron #2 [tenure #509084] is 534.69 ha in size. These tenures are located within Timber West's private lands, and therefore Mineral Access Agreements are in place in a year to year agreement. Access is 4 km east of Port Renfrew, along hwy 14, at the logging road Elliott Main. There is a locked gate which the author has a key which is part of the Mineral Access Agreement. A series of maintained and drivable logging spur roads are throughout the tenures.

Timber West is preparing to log this tenure [509083] in certain areas where old growth timber remains, falling boundary lines have been established and new roads have been surveyed. [marked on working maps]

3.0 2007 Prospecting Summary:

This is the fourth year of Le Baron Prospecting owning these tenures. Previously, the exploration consisted of conducting site surveys, road marking using GPS, brushing roads for access, site surveys, the Yahu Creek fault study, rock chip and stream sediment sampling, geochemical analysis of samples, potential drilling sites identified, and photos.

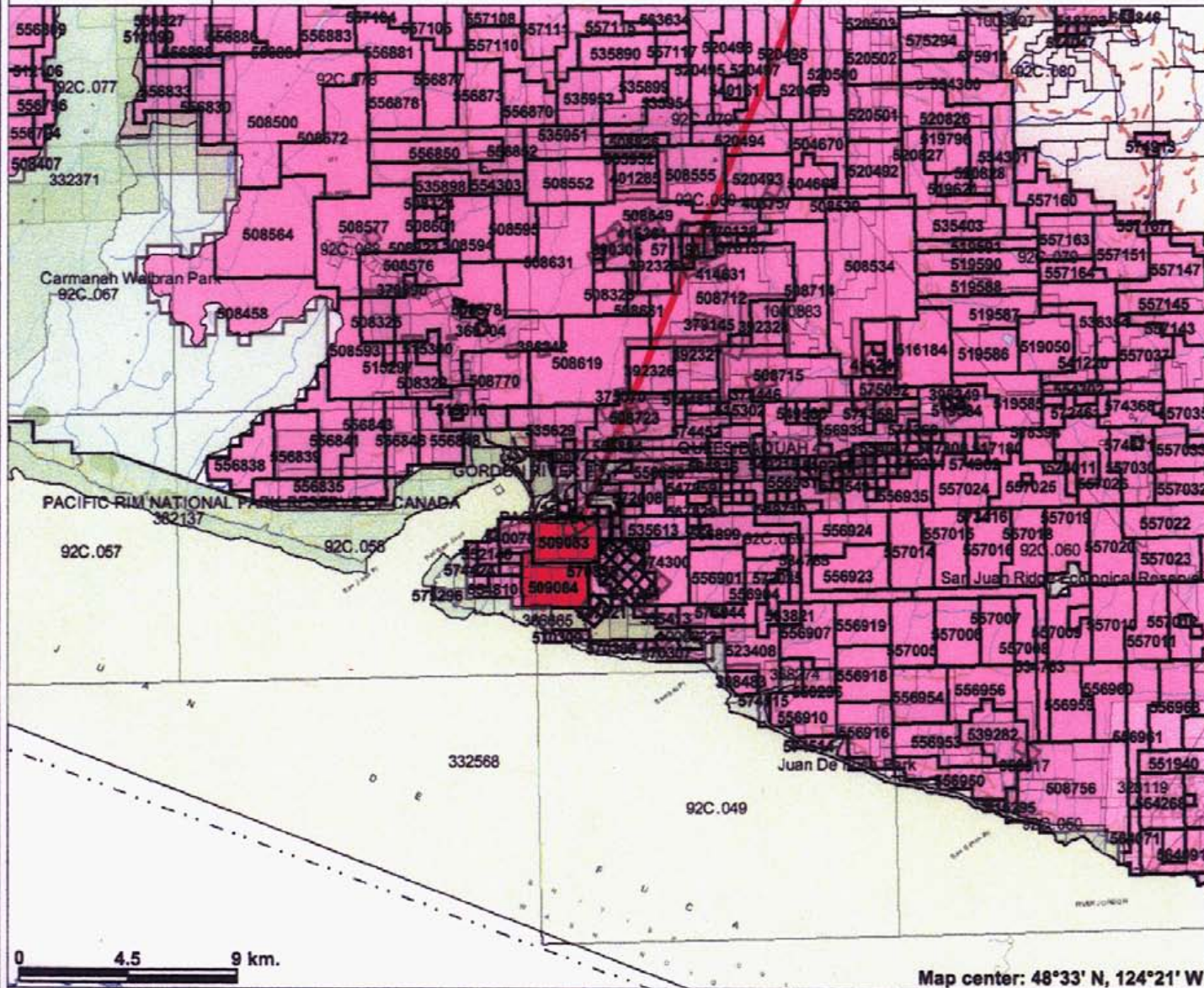
Previous year information on these tenures: [ARIS data base, #28953 / 2006, #28061 / 2005]

This past year has been very interesting on these tenures, two things have happened both of which I will discuss in some detail.

Heading into the future looks to be an interesting venture to say the least.

mineral tenures vancouver island

LeBARON TENURES



Legend

- Indian Reserves
- National Parks
- Parks
- Mineral Tenures (Mineral - LRDW)
- Mineral Claim
- Mineral Lease
- Reserves (Mineral - LRDW Sites)
- Placer Claim Designation
- Placer Lease Designation
- No Staking Reserve
- Conditional Reserve
- Release Required Reserve
- Surface Restriction
- Recreation Area
- Others
- Mining Division (MTO)
- Survey Parcels
- BCGS Grid
- Annotation (1:250K)
- Transportation - Points (1:250K)
- ✈ Airfield
- ✈ Anchorage - Seaplane
- ✈ Ferry Route
- ✈ Heliport
- ✈ Seaplane Base
- ✈ Air Field
- ✈ Airport
- ✈ Air Feature - Condition Unknown
- ✈ Airport Abandoned
- Transportation - Lines (1:250K)
- ✈ Ferry Route
- ✈ Aerial Cableway
- ✈ Road (Gravel Undivided) - 1 Lane

Scale: 1:250,000

0 4.5 9 km.

Map center: 48°33' N, 124°21' W

This map is a user generated static output from an Internet mapping site and is for general reference only. Data layers that appear on this map may or may not be accurate, current, or otherwise reliable. THIS MAP IS NOT TO BE USED FOR NAVIGATION.

4.0 Regional Geology and Structure:

The geology of southwestern Vancouver Island is composed of three distinctly different terranes.

- Paleozoic and Mesozoic metamorphic, volcanic, sedimentary and intrusive rocks of the Wrangellia Terrain
- Mesozoic volcano-sedimentary rocks of the Pacific Rim Terrain including the mostly sedimentary Leech River Complex.
- Tertiary rocks of the Crescent Terrain, including the Metchosin Igneous Complex and the sedimentary Carmanah Group (Yorath and Nasmith, 1995).

The older rocks of Wrangella were thrust against the younger Leech River rocks along the San Juan Fault that runs roughly east west from Port Renfrew to Cobble Hill. The Leech River Complex (Pacific Rim Terrain) was thrust onto the younger Crescent Terrain rocks along the Leech River Fault. This subduction was accompanied by a local magmatic events between 40 and 50 Ma ago.

5.0 Area Faults:

In reference to both [Muller 1982 file 821, Rushmore 1982] both discuss the geological setting of the San Juan Fault which is immediately north of these tenures and the Leech River Fault immediately south east of these tenures, and the resulting splay faults which trend in a north eastern direction within the tenure blocks. Both professionals have identified at least three different eras of plate tectonic movement, and geological time from the late Mesozoic through the Tertiary to the late Eocene, that last being about 25 million years ago which is the largest activity in regards to the under-thrusting of the Leech River Fault which possibly impacted the area splay faults. According to Muller 1982, "the area north east trending faults have potential for economic significance" "the quartz veins are abundant, most are gold bearing, and they represent the last era of geological activity within the region".

6.0 Felsic Sills:

A lot of work and information about the area was in reference to AA. Burgoyne, P.Eng. and previous geologists prior. Burgoyne suggests in the AGC report #25,697 that the felsic sills are "brittle and break more readily than the metasediments and thus act as a favorable and receptive host for the Au bearing quartz vein mineralization", and that the felsic sills represent a magmatic origin and a possible hydrothermal source for epigenetic Au bearing quartz / sulphide veins".

7.0 Mineralization:

North / east trending faults have economic significance in that they host an abundance of gold bearing quartz veins

PORT RENFREW AREA LOCAL FAULTS 1/191

LEGEND

- Qr Triassic to Cretaceous Leech River formation
- ML3* Metagreywacke - Schist Unit
- ML2* Argillite - Metagreywacke Unit
- TH* Eocene to Oligocene Hesquiat Formation
- Note text for rock compositions
- Geological contact
- Fault
- Foliation Attitude

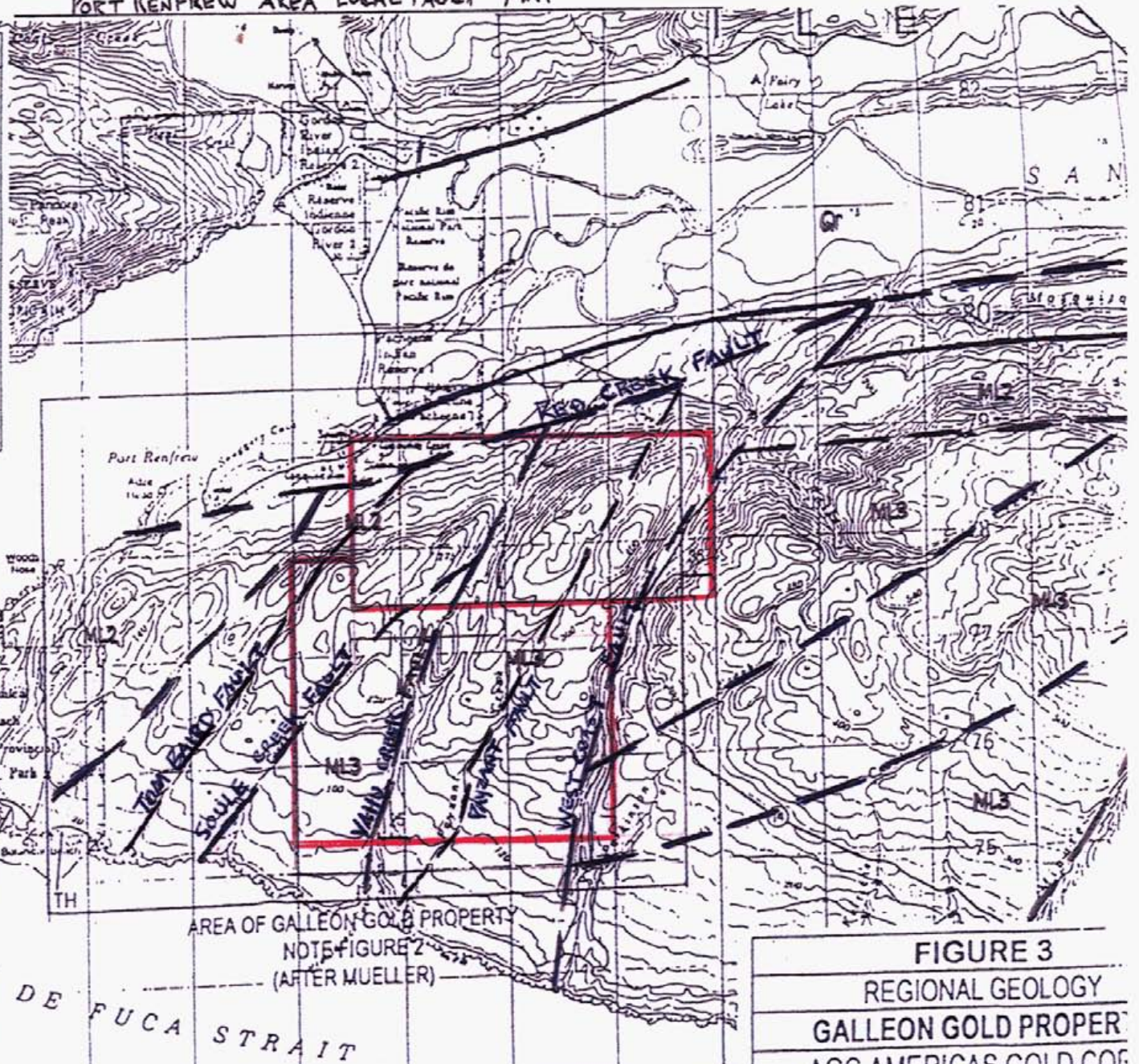
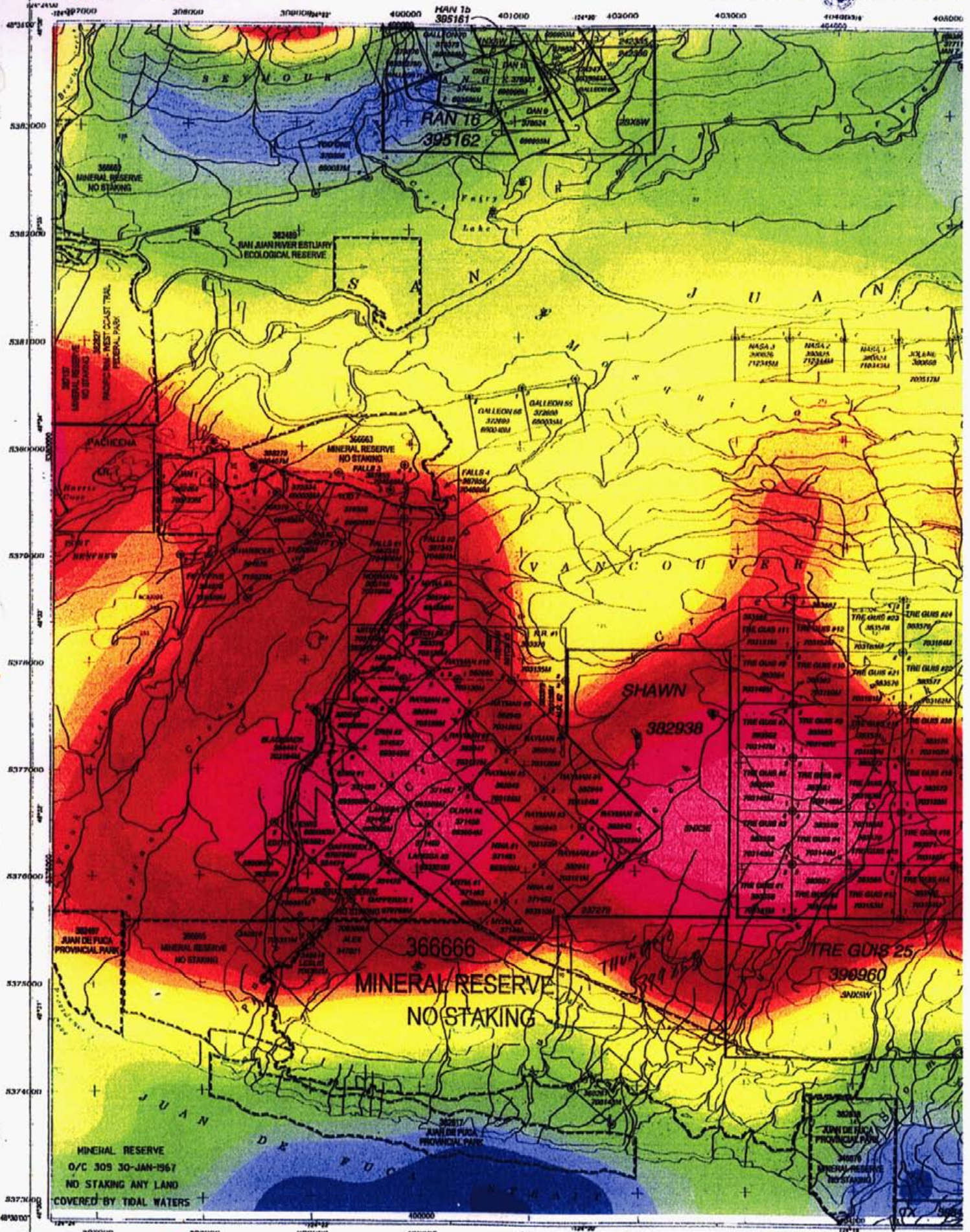


FIGURE 3
 REGIONAL GEOLOGY
 GALLEON GOLD PROPERTY
 AGC AMERICAS GOLD CO.

NTS 92C/9W

AREA OF GALLEON GOLD PROPERTY
 NOTE FIGURE 2
 (AFTER MUELLER)

124°30' 390000m. E. 91 92 93 94 95 25' 96 97 98 99 400 01 20' 02 03



8.0 2007 Le Baron Prospecting Program Overview:

Tenures: Le Baron #1 – 509083, and Le Baron #2 – 509084

1. Follow up on 2006 recommendations.
2. Carry out exploration of the magnetic anomaly in tenure #509083 [magnetic map included].
3. Conduct geochemical analysis of rock chip and stream samples.
4. To study the structure of the area splay faults, and their relationship to the San Juan and Leech River Structure. [area fault map included]
5. To re-establish the sites of previous geochemical analysis rock chip sample points as per the AGC report ARIS 25697 [Galleon Gold Property].
6. To identify the width of the quartz “swarm” as it traverses east / west across tenure #509083.
7. Pre planning for a pending drilling program / 2008 – 2009 / 2 more additional site identified in addition to the 4 identified site in 2006.

The tenures: 48 degrees – 32' – 34"north x 124 degrees – 23' – 21"west

<i>tenure number</i>	<i>owner</i>	<i>map</i>	<i>good to date</i>	<i>area</i>
509083	100% 145817	092C059	15/Dec/2008	513.144 ha
509084	100%145817	092C059	17/Dec/2008	534.694 ha

9.0 Exploration and Sampling methods:

- All samples were bagged, tagged and plotted on reference maps for future considerations.

Tools used:

Rock chip hammer, chisel, and pry bar, GPS [Irrance, global map 100] red / orange survey tape, blue for survey lines, cannon digital camera, field loup, field maps, microscope 1-40,000.

Methods of sampling:

Rock chip – breaking off small rock chip using hammer / chisel, identify, locate, plot for future reference using GPS, bag and tag sample.

Sediment sampling – moss matt, plastic classifier, gold pan, plot for future reference using GPS, bag and tag sample

Moss sample – hand grab moss matt, plot for future reference using GPS, bag and tag sample.

Rock chip sampling:

Host rock was quartz veins / trending east west structure, dipping from 60 to 120 degrees.

Sediment sampling:

Stream and small creek sediment samples were obtained for future reference. Heavy concentrations were gathered for future consideration.

10.0 Technical, Geochemical and Prospecting Program:

1. Timber West in the early fall rebuilt some of the logging roads which were overgrown, [marked on working maps] in preparation for logging.
2. Rock outcrops and quartz seams along these newly rebuilt logging roads are well exposed. The host rock in tenure #509083 is mostly metasediment, shale, slate, biotite schist, and some rhyolite flows, with abundant quartz veins.
3. Limited geological mapping has been done on these tenures to date, mostly basic GPS survey lines were conducted over specific target areas. [referenced on working maps].
4. A thin layer of glacial till /clay is abundant over the tenures, from a measured depth of <1 inch to > 2 feet in pockets, this should be looked at more closely in the future as to identify the minerals holding within.
5. The felsic sill swarms are in some areas less than a meter wide, and in other areas over 4 meters wide. [marked on working maps]. They appear to be brittle in nature than the metasediment structure and therefore are more favorable to host Au bearing quartz veins.
6. Area structure – faults: Muller [1982] states that a major easterly trending fault lies at the northern edge of the tenure #509083. This fault he says passes through the village of Port Renfrew and possibly joins with the San Juan Fault. Over 5 documented area “splay faults” or local faults as some describe, bisect these two tenures. [fault map included] Last years prospecting program studied in detail the Yahu Fault [ARIS report # 28953] it did not however identify the other local area faults such as “Tom Baird”, “Soule Creek Fault”, “Paysant Creek Fault”, “Parkinson Creek Fault”. These faults should be studied in greater detail.
7. Quartz veins – while some of the quartz veins were of very clear quartz crystals and structure was very simple with open filled or beautiful crystal structure, other quartz veins however such as the cloudy to milky white quartz veins hosted some visible Au of very nice structure. The size of the quartz veins was from less than an inch wide to several that were two to four inches in width that were in swarms to single quartz veins that were several feet in width. For the most part these quartz veins hold an Au bearing economic value, both from a possible production stand point but from a single specimen collector stand point they are priceless.

10.0 Sample Specific Technical Information: continued.

1. Target host rock / Quartz veins
2. Reference to ALS Chemex Certificates of Analysis
3. Specific samples of interest: PGE AE-ICP 30 / Au, Pt, Pd only precious metals

Certificate of analysis: VA07150705 – 6 rock chip / quartz vein / refer map

Sample #1 – nts: 397788 x 5377960 – 3 inch quartz vein / milky white / fig 4 map
Sample #2 – nts: 397977 x 5378020 – 2 inch quartz vein / clear crystal / fig 4 map
Sample #3 – nts: 399058 x 5378314 – 4 inch quartz vein / white crystal / fig 6map
Sample #4 – nts: 398832 x 5378068 – 2 inch quartz vein / milky white / fig 6 map
Sample #5 – nts: 398800 x 5378020 – 4 inch quartz vein / clear, chunk / fig 6 map
Sample #6 – nts: 399060 x 5377985 – 6 inch quartz vein / white crystal / fig 6map

Certificate of analysis: VA07150706 – 10 sediment/road side gravel grab/map

Sample #A – nts: 397845 x 5378060 – gravel grab – sieved – figure map 4+5
Sample #B – nts: 397855 x 5377795 – gravel grab quartz wash – sieved – fig 4+5
Sample #C – nts: 397961 x 5377985 – gravel grab – ditch – sieved – fig map 4+5
Sample #D – nts: 398060 x 5378218 – gravel grab quartz wash –sieved – fig 4
Sample #E – nts: 398430 x 5378478 – gravel grab – ditch – sieved –fig map 4,6,7
Sample #F – nts: 398895 x 5378748 – gravel grab –ditch – sieved – fig map 7
Sample #G – nts:399055 x 5578555 – gravel grab quartz wash –sieved, fig 6,7
Sample #H – nts:398946 x 5378316 – gravel grab –ditch – sieved, fig map 6,7
Sample #I – nts: 398886 x 5378249 – gravel grab quartz wash, sieved, fig 6,7
Sample #J –nts: 398800 x 5378020 – gravel grab – ditch – sieved, fig map 6,7

Certificate of analysis: VA0715007 – 4 moss matt / hand grab in creek

Sample #K – nts: 399075 x 5378555 – moss matt – hand grab – rock moss
Sample #L – nts: 399160 x 5787728 – moss matt – hand grab – creek moss
Sample #M – nts: 399211 x 5378790 – moss matt – hand grab – rock moss
Sample #N – nts: 399307 x 5378955 – moss matt – hand grab – rock moss

11.0 Other tenure work:

Rock chip samples:

50 rock chip / quartz veins samples were taken / road side / Elliott ML, E-2200, E-3000
10 rock chip / siltstone / shale samples were taken / Elliott 3000.
20 garnet / biotite schist samples taken / Elliott 3000 road
10 rock chip / rhyolite sill samples.

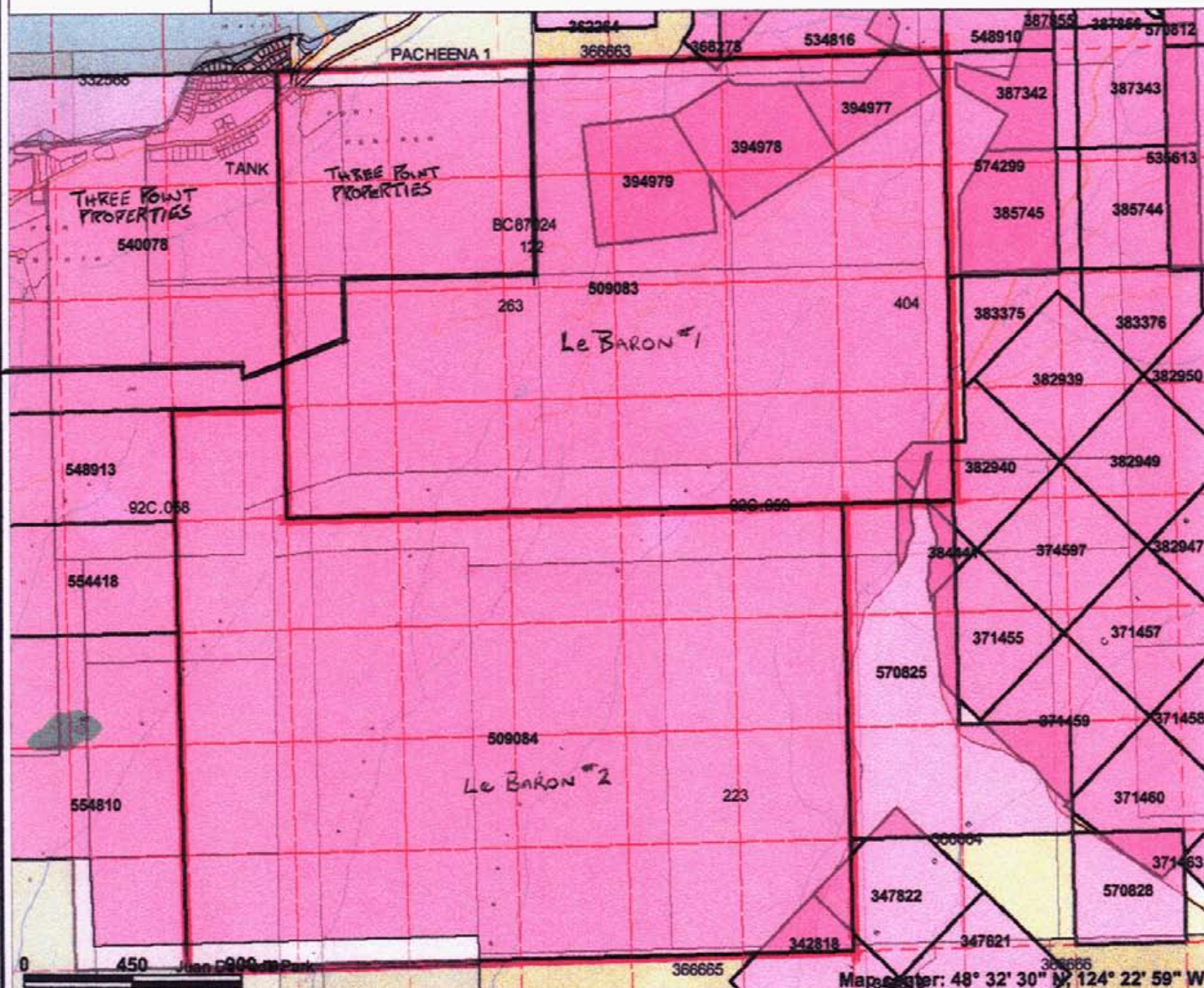
Survey line.

3230 - meters / road side survey / survey points A to L / figure maps 4,5,6,7
325 - meters / survey line / survey points I to II / figure map 6
1818 – meters / survey line / survey points III to IIII / figure map 4,5,6

5373 meters total of survey line run.

Drill sites: 2 drill sites have been identified and plotted in preparation for a future drilling program / figure maps 6, 7

Le Baron Prospecting Tenures #509083 / #509084

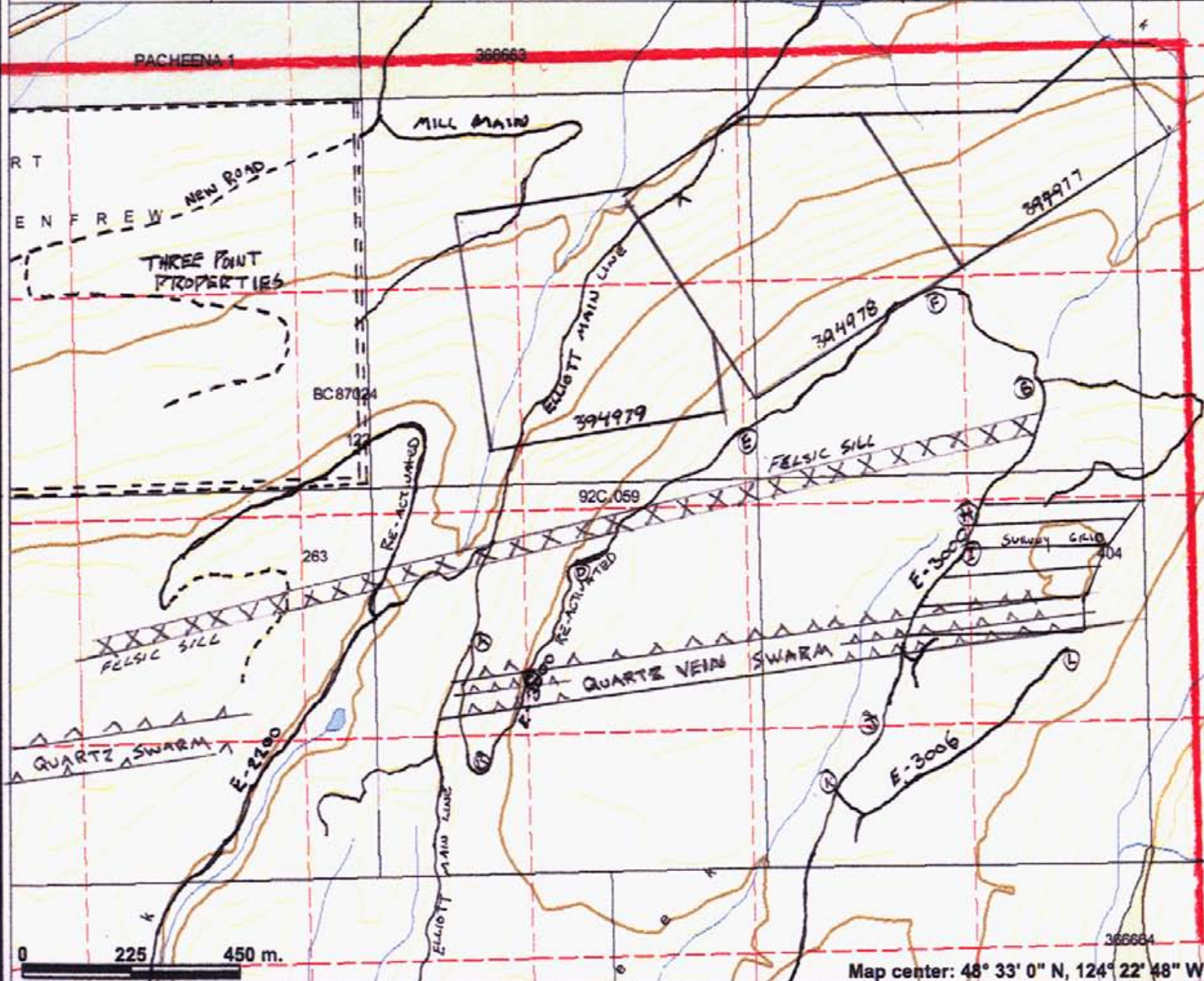


- ### Legend
- Indian Reserves
 - National Parks
 - Parks
 - Mineral Titles Grid (LRDW)
 - Mineral Tenures (Mineral - LRDW)
 - Mineral Claim
 - Mineral Lease
 - Reserves (Mineral - LRDW Sites)**
 - Placer Claim Designation
 - Placer Lease Designation
 - No Staking Reserve
 - Conditional Reserve
 - Release Required Reserve
 - Surface Restriction
 - Recreation Area
 - Others
 - Mining Division (MTO)
 - Integrated Cadastral Fabric
 - Survey Parcels
 - BCGS Grid
 - Contours (1:250K)
 - Contour - Index
 - Contour - Intermediate
 - Area of Exclusion
 - Area of Indefinite Contours
 - Annotation (1:20K)
 - Transportation - Points (TRIM)
 - Heli-pad
 - Transportation - Lines (TRIM)
 - Airfield
 - Airport
 - Airstrip
- Map corner: 48° 32' 30" N, 124° 22' 59" W
- Scale: 1:25,000

This map is a user generated static output from an Internet mapping site and is for general reference only. Data layers that appear on this map may or may not be accurate, current, or otherwise reliable. THIS MAP IS NOT TO BE USED FOR NAVIGATION.

Le Baron Prospecting / #509083 / prospecting area overview

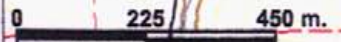
ROADS + STRUCTURE OVERVIEW



Legend

- Indian Reserves
- National Parks
- Parks
- Mineral Titles Grid (LRDW)
- Reserves (Mineral - LRDW Sites)
- Placer Claim Designation
- Placer Lease Designation
- No Staking Reserve
- Conditional Reserve
- Release Required Reserve
- Surface Restriction
- Recreation Area
- Others
- Mining Division (MTO)
- Integrated Cadastral Fabric
- BCGS Grid
- Contours (TRIM)
 - Contour - Index
 - Contour - Index.Indefinite
 - Contour - Index.Depression
 - Contour - Index.Depression Indefinite
 - Contour - Intermediate
 - Contour - Intermediate.Indefinite
 - Contour - Intermediate.Depression
 - Contour - Intermediate.Depression Indefinite
- Area of Exclusion
- Area of Indefinite Contours
- Annotation (1:20K)
- Transportation - Points (TRIM)
- Helipad
- Transportation - Lines (TRIM)
- ~ Airfield

Scale: 1:12,500



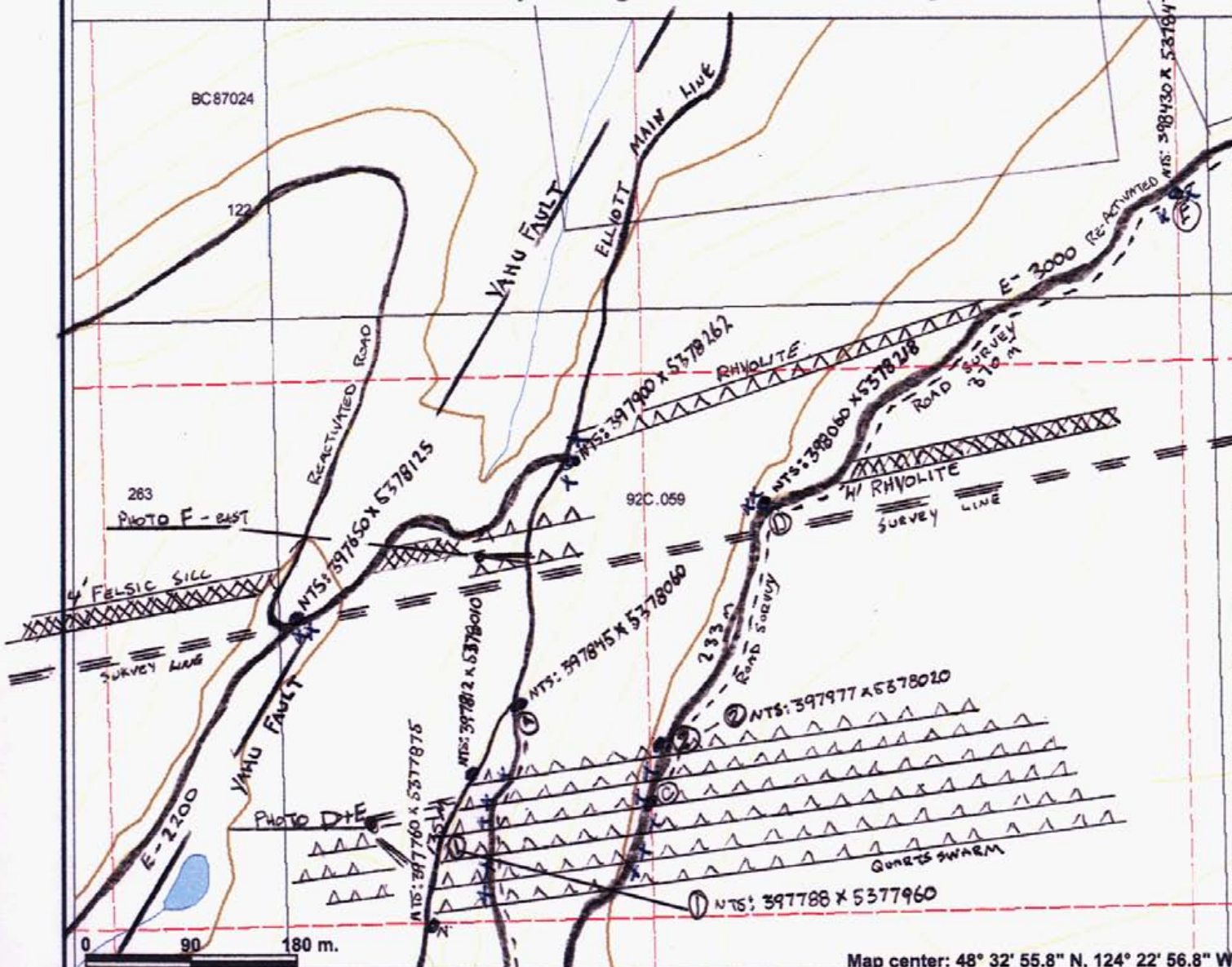
Map center: 48° 33' 0" N, 124° 22' 48" W

This map is a user generated static output from an Internet mapping site and is for general reference only. Data layers that appear on this map may or may not be accurate, current, or otherwise reliable. THIS MAP IS NOT TO BE USED FOR NAVIGATION.

Notes: roads: quartz veins: felsic sill swarm: QUARTZ SWARM

FIGURE #4

Le Baron Prospecting / #509083 / working map



Legend

- Indian Reserves
- National Parks
- Parks
- Mineral Titles Grid (LRDW)
- Reserves (Mineral - LRDW Sites)
- Placer Claim Designation
- Placer Lease Designation
- No Staking Reserve
- Conditional Reserve
- Release Required Reserve
- Surface Restriction
- Recreation Area
- Others
- Mining Division (MTO)
- Integrated Cadastral Fabric
- BCGS Grid
- Contours (TRIM)
 - Contour - Index
 - Contour - Index.Indefinite
 - Contour - Index.Depression
 - Contour - Index.Depression Indefinite
 - Contour - Intermediate
 - Contour - Intermediate.Indefinite
 - Contour - Intermediate.Depression
 - Contour - Intermediate.Depression Indefinite
- Area of Exclusion
- Area of Indefinite Contours
- Annotation (1:20K)
- Transportation - Points (TRIM)
 - Helped
 - Transportation - Lines (TRIM)
- Airfield

Scale: 1:5,000

This map is a user generated static output from an Internet mapping site and is for general reference only. Data layers that appear on this map may or may not be accurate, current, or otherwise reliable. THIS MAP IS NOT TO BE USED FOR NAVIGATION.

X: ROCK CHIP
o: GPS Sample point

Map center: 48° 32' 55.8" N, 124° 22' 56.8" W

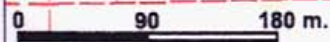
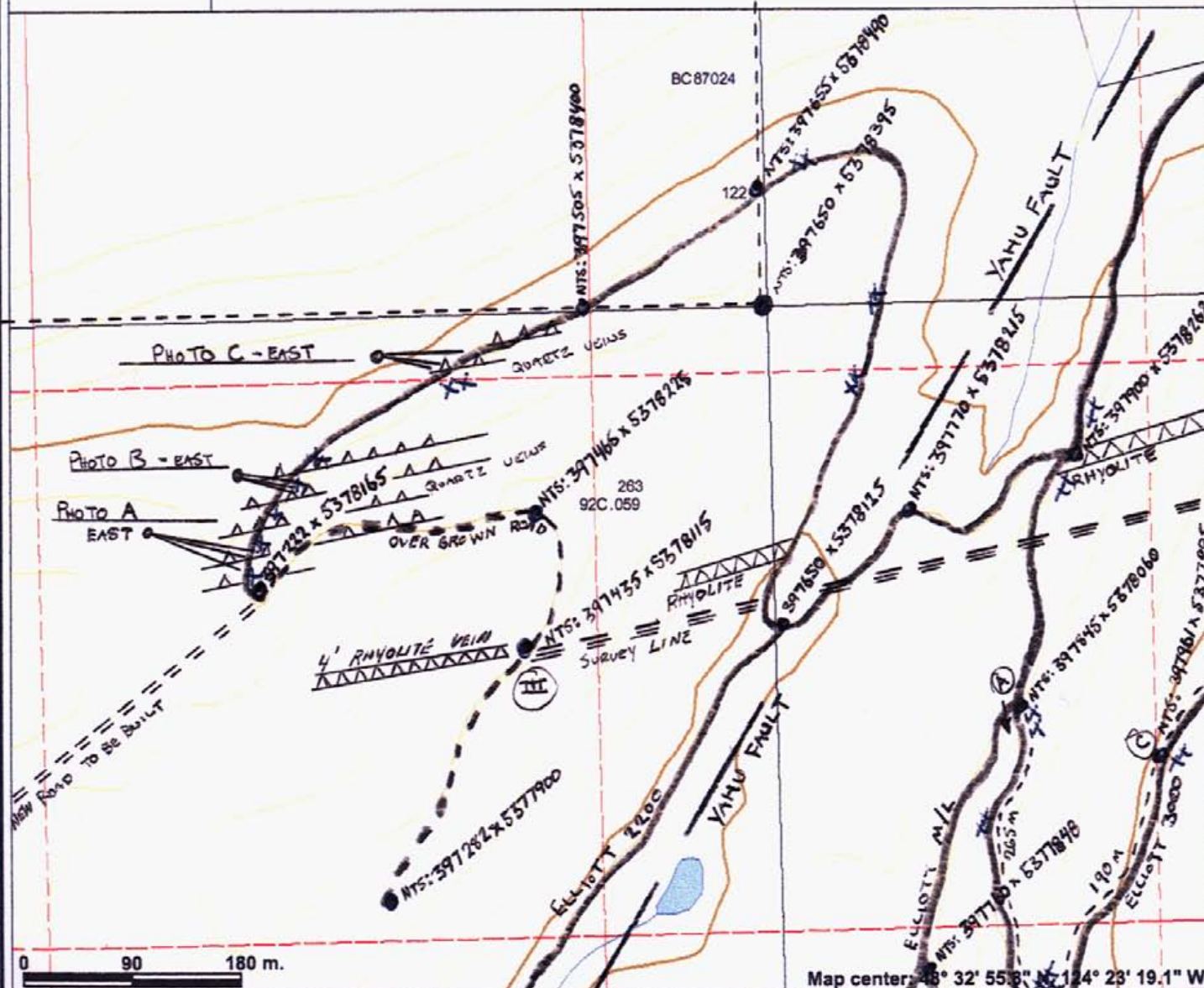
0 90 180 m.

Le Baron Prospecting / #509083 / working map



Legend

- Indian Reserves
- National Parks
- Parks
- Mineral Titles Grid (LRDW)
- Reserves (Mineral - LRDW Sites)
- Placer Claim Designation
- Placer Lease Designation
- No Staking Reserve
- Conditional Reserve
- Release Required Reserve
- Surface Restriction
- Recreation Area
- Others
- Mining Division (MTO)
- Integrated Cadastral Fabric
- BCGS Grid
- Contours (TRIM)
 - Contour - Index
 - Contour - Index, Indefinite
 - Contour - Index, Depression
 - Contour - Index, Depression, Indefinite
 - Contour - Intermediate
 - Contour - Intermediate, Indefinite
 - Contour - Intermediate, Depression
 - Contour - Intermediate, Depression, Indefinite
- Area of Exclusion
- Area of Indefinite Contours
- Annotation (1:20K)
- Transportation - Points (TRIM)
- Transportation - Lines (TRIM)
- Airfield



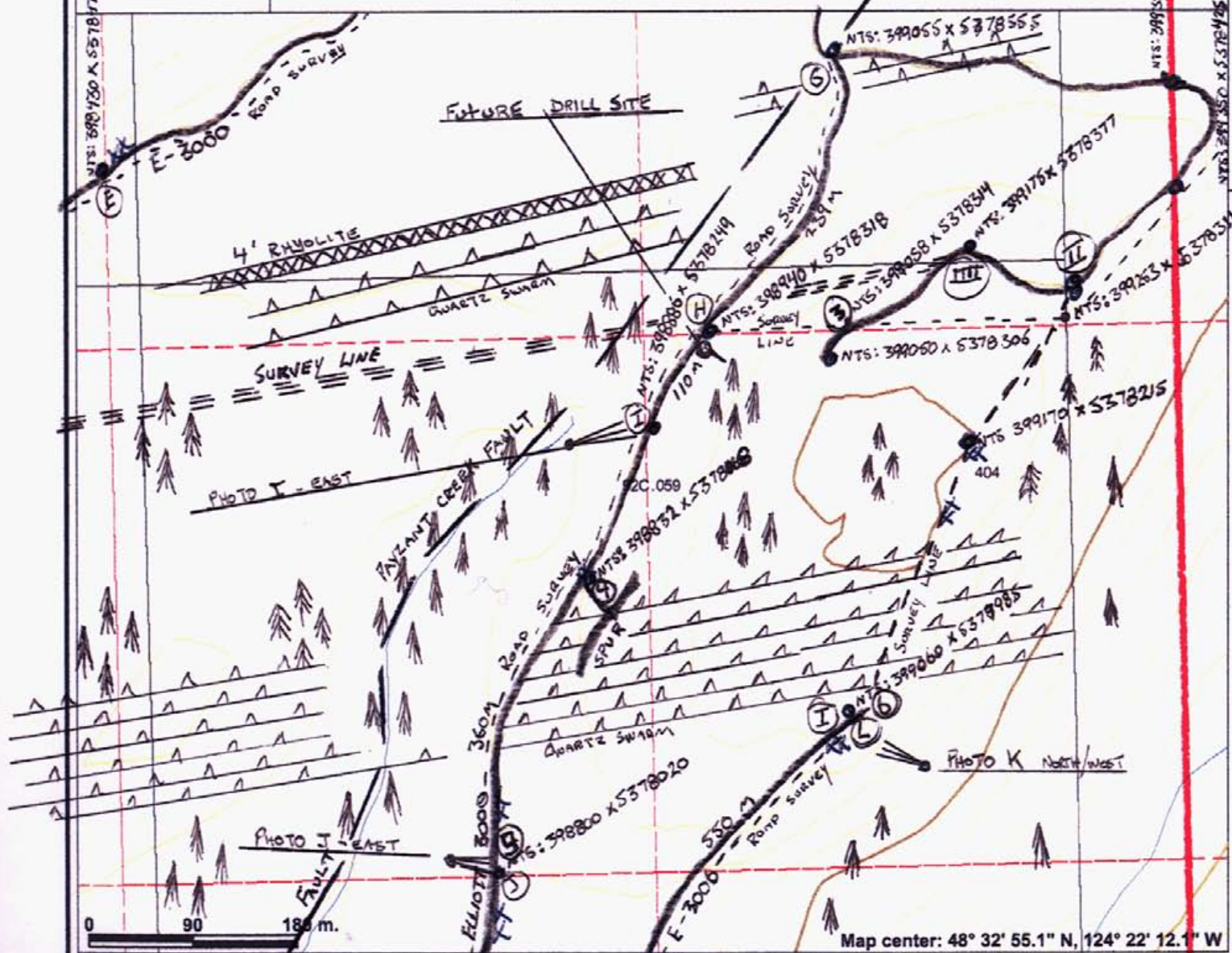
This map is a user generated static output from an Internet mapping site and is for general reference only. Data layers that appear on this map may or may not be accurate, current, or otherwise reliable. THIS MAP IS NOT TO BE USED FOR NAVIGATION.

X: Rock Camp
 o: GPS Sample Point

NTS: 397855 x 537795
 NEW ROAD TO BE BUILT

FIGURE - 6

Le baron Prospecting / #509083 / working map



Legend

- Indian Reserves
- National Parks
- Parks
- Mineral Titles Grid (LRDW)
- Reserves (Mineral - LRDW Sites)
- Placer Claim Designation
- Placer Lease Designation
- No Staking Reserve
- Conditional Reserve
- Release Required Reserve
- Surface Restriction
- Recreation Area
- Others
- Mining Division (MTO)
- Integrated Cadastral Fabric
- BCGS Grid
- Contours (TRIM)
- Contour - Index
- Contour - Index.Indefinite
- Contour - Index.Depression
- Contour - Index.Depression Indefinite
- Contour - Intermediate
- Contour - Intermediate.Indefinite
- Contour - Intermediate.Depression
- Contour - Intermediate.Depression Indefinite
- Area of Exclusion
- Area of Indefinite Contours
- Annotation (1:20K)
- Transportation - Points (TRIM)
- Helipad
- Transportation - Lines (TRIM)
- Airfield

Scale: 1:5,000

This map is a user generated static output from an Internet mapping site and is for general reference only. Data layers that appear on this map may or may not be accurate, current, or otherwise reliable. THIS MAP IS NOT TO BE USED FOR NAVIGATION.

X: Rock chips
 o: GPS SAMPLE POINT

FIGURE 6 - A

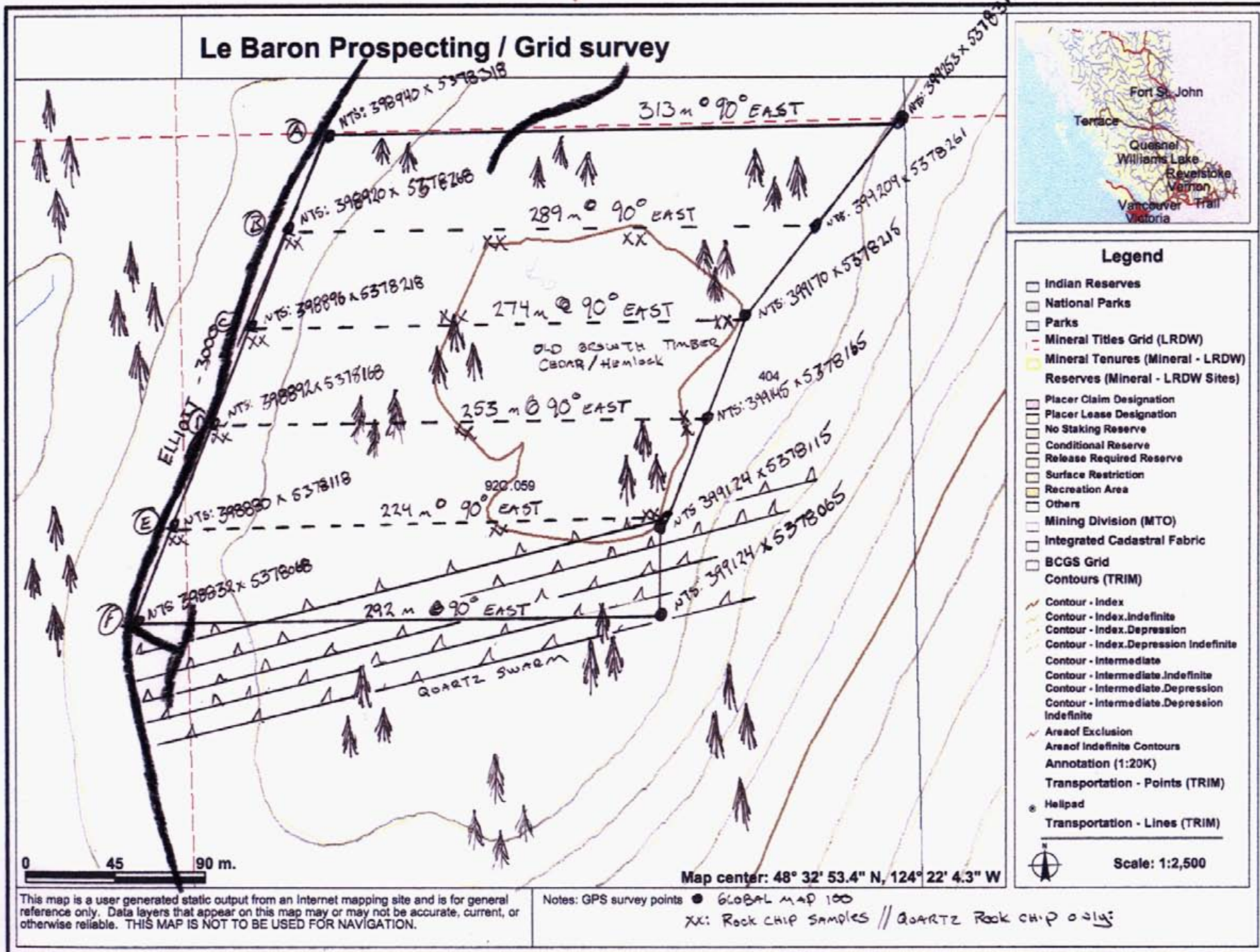


FIGURE 7

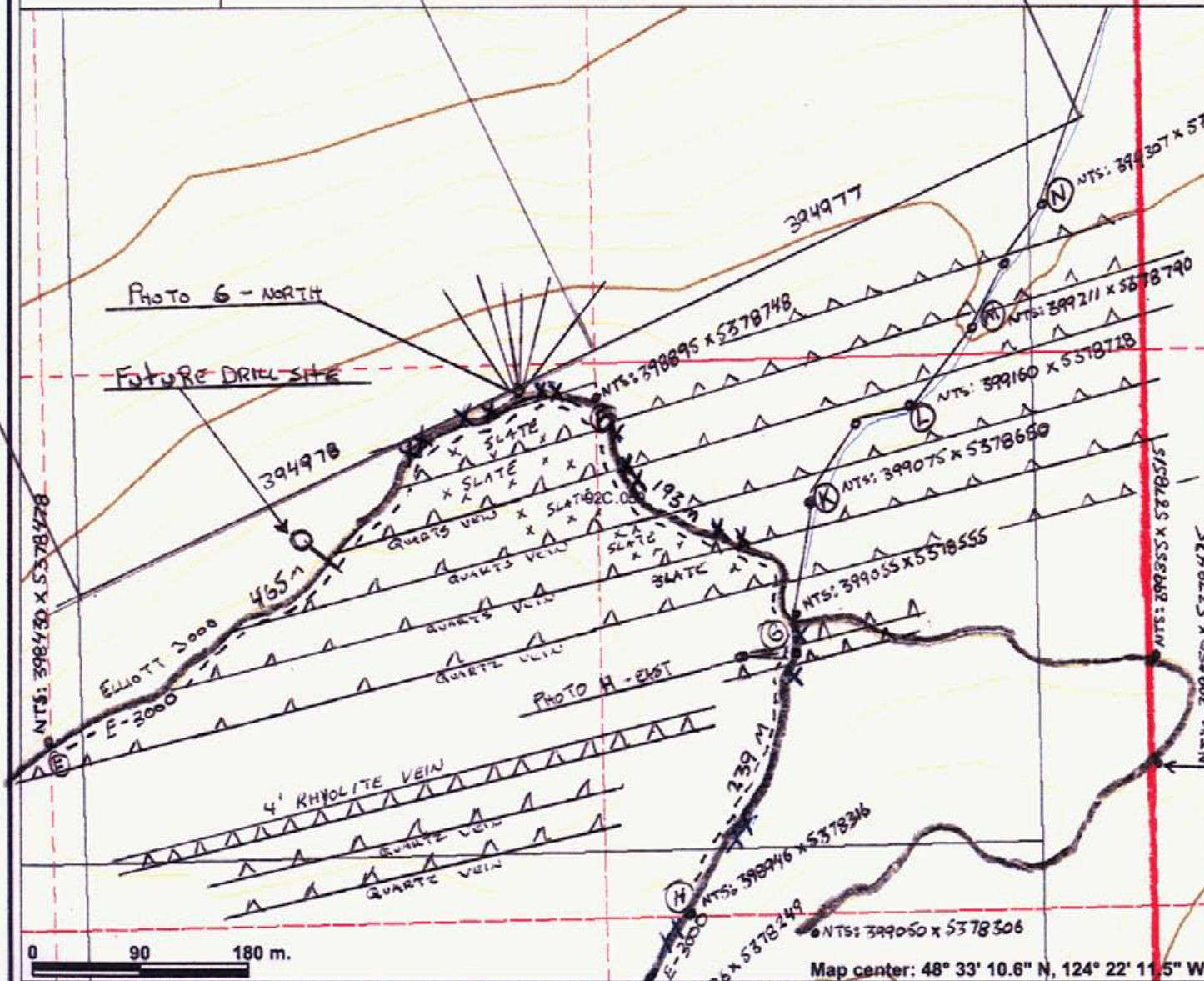
Le Baron Prospecting / #509083 / working map



Legend

- Indian Reserves
- National Parks
- Parks
- Mineral Titles Grid (LRDW)
- Reserves (Mineral - LRDW Sites)
- Placer Claim Designation
- Placer Lease Designation
- No Staking Reserve
- Conditional Reserve
- Release Required Reserve
- Surface Restriction
- Recreation Area
- Others
- Mining Division (MTO)
- Integrated Cadastral Fabric
- BCGS Grid
- Contours (TRIM)
- Contour - Index
- Contour - Index.Indefinite
- Contour - Index.Depression
- Contour - Index.Depression Indefinite
- Contour - Intermediate
- Contour - Intermediate.Indefinite
- Contour - Intermediate.Depression
- Contour - Intermediate.Depression Indefinite
- Area of Exclusion
- Area of Indefinite Contours
- Annotation (1:20K)
- Transportation - Points (TRIM)
- Transportation - Lines (TRIM)
- Airfield

Scale: 1:5,000



This map is a user generated static output from an Internet mapping site and is for general reference only. Data layers that appear on this map may or may not be accurate, current, or otherwise reliable. THIS MAP IS NOT TO BE USED FOR NAVIGATION.

Map center: 48° 33' 10.6" N, 124° 22' 11.5" W
 x : Rock CHIP SAMPLES
 • : GPS SAMPLE POINT

12.0 Statement of Costs:

**Le Baron Prospecting
Statement of costs – 2007**

Work Program – October 13 – December 9, 2007

Field Personal

S. Phillips [tenure owner]
FMC 145817
Planning, supervision, field work, sample preparation
114 hours x \$30.00hr = \$3420.00

R. Morris
FMC 118959
Assistant, field work, mapping
126 hours x \$20.00hr = \$2520.00

Accommodations
16977 Tsonoquay Dr.
Port Renfrew BC
10 days x \$70.00 day = \$700.00

Transportation
4x4 truck / \$50.00 day x 19 days = \$950.00

Professional Services
Le Baron Prospecting
Data compilation, report / \$300.00 day x 1.5 days = \$450.00

ALS Chemex
Vancouver BC
Geochemical Analysis
20 samples cost not factored in report = \$502.69

Total costs 2007 = \$8040.00

13.0 Other information / Surface and Subsurface Issues:

- *Quote from the Mineral Titles Branch "Information Letter #7"*
- **A guide to surface and subsurface rights in British Columbia.**

"Although landowners hold title to property, it should be understood that their Certificate of Title rarely includes what lies beneath the surface. In British Columbia as in the other Canadian provinces, private surface does not include mineral rights. The Government of British Columbia owns and may dispose of subsurface rights to most lands in the province. This fact may come as quite a surprise to landowners. The critical question asked most often is, "How does the government respect and protect my interest as the owner of the surface"?"

"Concurrently, the holder of subsurface mineral rights expects the government to facilitate access to find the minerals and develop them. It is a delicate balance involving three parties--the landowner, the mineral title holder, and the government--who must all work together to reach an agreement. The government does, however, provide for the rights and interests of both surface and subsurface owners to prevent potential competing interests from compromising one another."

99% of Surface owners of Land within the Province of British Columbia do not know this law. Open communication between surface and subsurface owners is "key" to keeping disputes at bay.

14.0 Tenure Ownership

First off, I have owned these two tenures since 2003; tenure #509083 is located upon Timber West private forest lands. *A mineral access agreement [99-125-02]* is signed and current for this tenure. Tenure #509084 is on crown land, and no access agreement is required.

These lands were listed as forest lands until adopted by the Official Community Plan of Port Renfrew in August of 2004. A portion of these lands now reside in the Capital Regional District, and the surface use has changed from forestry to development. In January 2006, Timber West listed a portion of this tenure [509083] for sale with a real estate company JJ. Barnicke.

A Victoria development company purchased a portion of this tenure in January of 2007. Three Point Properties of Victoria BC.

Web site information, [www.portrenfrew@threepointproperties.com] subsequently became the owner of a portion of the surface of this tenure. [Map included to show effected area, figure map 2]. This came as quite a surprise to the new owners that there is subsurface ownership of their new property. Whether they failed to do due diligence as required before purchasing vast tracts of forest land for development or Timber West failed to disclose is an issue that at this point in time will not further be discussed in this report.

A debate about access to a portion of this tenure prior to development has been ongoing since January 2007, and has now involved the Mediation and Arbitration Board of the Ministry of Energy and Mines and Petroleum and Natural Resources to become involved.

15.0 Pending Mediation:

This surface / subsurface dispute are pending in mediation. File #13040-20-1-1345

16.0 Privacy Reasons:

At this time, for confidential and legal reasons specific information about this surface subsurface dispute is being held confidential pending the outcome of the Mediation and Arbitration Board of Energy and Mines.

Council has been obtained by Le Baron Prospecting.

17.0 Looking Ahead:

Secondly; Le Baron Prospecting has been diligently working to promote these tenures, based upon the current data and the historic data of the area to get assistance to take this project to a new level of exploration.

18.0 Option Agreements:

These two tenures at the time of compiling this report have become the subject of opening dialogue for a 5 year option agreement.

Due to confidentiality, the identity of the optionor will not be revealed until such a time as the option agreement is signed and filed with the Ministry of Energy and Mines and then only still if the new operator wishes this to be announced.

Hopefully, in the near future Le Baron Prospecting will be assisted by others to take these tenures to a whole new level of exploration. Time will soon tell.

19.0 Possible deposit of economic value:

These tenures cover what was once known as the Galleon Gold Tenures, staked and prospected by a local prospector, Mr. Gary Pearson of Port Renfrew. Mr. Pearson discovered what many prior to him already knew, the gold of significant portions lay under this area in what is known as the toe of the Leech River Fault. In 1999, ARIS report # 29657, conducted by AGC, Americas Gold Corp; author was A. Burgoyne a professional geologist. The writer noted an overwhelming abundance of quartz seams most of which carried visible Au, from a low of .001ppm to greater than 100ppm of Au. In 1999, this area was identified as a potential to hold an Au deposit of economic value. Without getting into great detail of that report, an exploration program of \$140,000.00 dollars was proposed at that time. Option agreements were signed between the prospector and AGC, but the price of Au dropped significantly and there for this program never materialized.

The tenures were subsequently allowed to lapse and in December of 2003 that is when Le Baron Prospecting acquired the ground.

Yet, the Au still remained.

Over the past few years, and with the rising price of Au, Le Baron Prospecting and its associates have once again fueled the development of this area, and hopefully with the pending option agreement, we can finally realized what previous prospectors have set out to do many times before, to allow the Au to be released from the quartz veins where it has remained for millions of years.

20.0 Area Historical Exploration:

1. Bedrock and placer gold occurrences within and adjacent to metasedimentary rocks of the Leech River Complex have a long history of development and production. The Spaniards first identified placer gold near Sombrio Point in 1792. Some production from this occurrence was reported during the period 1907-1914 utilizing a 50 man monitor and sluice operation.
2. The Leech River placer deposits were discovered in the 1860's and was extensively worked up until the late 1870's. Holland (1944) estimated the actual value of gold produced during this period at between \$100,000- \$200,000, between 1924- 45, a recorded 192 ounces of gold were recovered from the area.
3. In the Port Renfrew area, a gold nugget was reported to have been found, in 1893, in a small stream flowing into Providence Cove. Further prospecting at that time has led to the discovery of several quartz veins, all carrying small quantities of gold in surface outcrops.
4. Between 1900 and 1924 the Baird family of Port Renfrew, were a few of the first settlers to this region, they were farmers and miners by trade. They staked several crown grant tenures and 6 of them were located on the lands directly in which the Le Baron tenures are located. There is reference to a drift of 90 feet which was done and surveyed in 1914 and is just north east of the Yahu Fault on the historic Kinsley crown grant tenures. The crown grants at that time were known as Moonlight 780 and Mountainview 781. The drift was exploration adit of a 4 – 6 foot quartz seam loaded with Au. Future exploration by Le Baron Prospecting will uncover the mystery of the huge Au lode within the area.
5. Triangle Ventures of Victoria also owns huge mineral and placer tenures within the area also; and have been conducting exploration program in the Sombrio Area.
6. In recent reference to the Geological and Exploration Report # 25,697 conducted by AGC, American Gold Corporation 1997 on the Galleon Gold Property, by A.A. Burgoyne. This report was the beginnings of a planned exploration program in which \$140,000 was to be justified in exploring specific targets within the then Galleon Gold Tenures.
7. Recently a company from the United States called Sunberta Resources Inc, incorporated in the city of Nevada, California, in November of 2006, and in January of 2007 was to become Sunberta Alberta. This company, headed by Kelly Sundberg, is new to the area has been conducting exploration in the Sombrio area, optioning a lot of placer tenures. Exploration activity reports can be viewed on the www.secinfo.com web site.

21.0 Exploration in Port Renfrew / Emerald Field Resources Corp.

For the past several years Emerald Field Resources Corporation of Kenora, Ontario has been quietly conducting diamond drilling, geochemical sampling, and as recently as last year has flown over 1900 kilometers of aero magnetic surveys just north of these Le Baron tenures.

It is rumored within the community of Port Renfrew that a possible mine is not that far off in the distant future.

The deposit within the area is well known within the mining community, historic reports such as Reko in the Renfrew creek area, suggest there is an Fe and Cu skarn deposit in the hundreds of millions of tons. The Bugaboo again is a deposit high in Fe and is said to be in the millions of tons.

The Pearson Block is underlain by the West Coast Crystalline Complex, and many studies have taken place suggest this area is underlain by vast amounts of PGE's and may host a copper – nickel deposit of economic wealth.

The owner of Le Baron Prospecting and his associates hold vast amounts of mineral tenures on key pieces within the Pearson Project Block.

22.0 Follow up Recommendations

1. To follow through with the pending option agreement. Information is confidential at time of this report.
2. The continuation of the pending Mediation and Arbitration for access to a portion of tenure #509083, which is now owned by Three Point Property Developments, and to get access to study the geological structure prior to development.
3. To continue study the potential of the quartz veins to hold a deposit of economic potential.
4. To understand the unique geological structure as it relates to the Leech River Formation.
5. To continue to analyze the area “splay faults” and to further enhance the value of these faults
6. A continuation of geochemical analysis of both rock chip and stream sediment samples
7. Pre planning for future drilling program on identified target areas
8. Identify, document and enter the Kinsley drift, [era 1914], grid survey the original crown grant tenure Moonlight 780, Mountain View 781.

23.0 Author Qualifications

1. I am a prospector, with a history of prospecting the West Coast of Vancouver Island.
2. I am the owner of Le Baron Prospecting of Port Renfrew BC.
3. I am a member in good standing with the Vancouver Island Placer Miners Association.
4. I have several large mineral tenures within the area of Port Renfrew.
5. I am currently studying the West coast Crystalline Intrusion Complex.
6. I have a full understanding of the Plate Tectonics of Southern Vancouver Island.
7. I am working closely with professional geologists for guidance and information in regards to questions I have about the geological structure of the Port Renfrew area.

I here by consent to the use of information in this report to further enhance the exploration of the Le Baron Tenures #509083, #509084

Scott Phillips:  Date: DEC. 19 - 2007

24.0 Acknowledgments / Reference information:

MTO

Mineral Titles Online
Mapping, online services

ARIS

Area reference reports
Yahu Creek – 28593
Gaffers – 26731
Galleon Gold - 25697
Murton – 16507
Kinsley – 14320

Minfile

Historic reports
Kinsley – Lella - 092C058 - showing
Spanish – 092C081 – showing
071

Emerald Field Resources Corp.
Public information
Reports: 28715, 28059, 27517

ALS Chemex
Vancouver BC
Geochemical analysis

Appendix 2 / Photos

Photo A / Figure map 5 / Quartz veins / Au



Photo B / Figure map 5 / Quartz veins / Au



Photo C / Figure map 5 / Au - nice



Photo D / Figure map 4 / part of quartz seam swarm / Au



Photo E / Figure map 4 / part of quartz vein swarm / Au



Photo F / Figure map 4 / 12 inch quartz vein / Au



Photo G / Figure map 7 / view photo of Port Renfrew bay



Photo H / Figure map 7 / quartz vein structure /

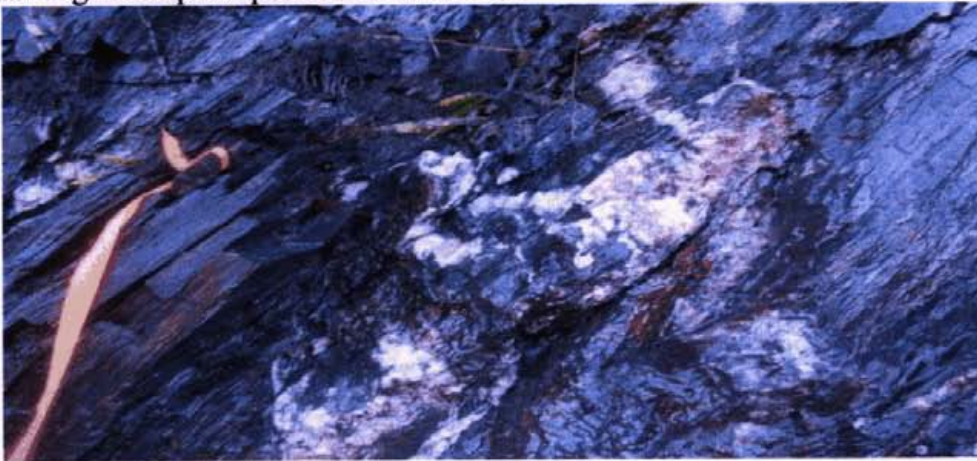


Photo I / Figure map 6 / Au bearing quartz vein / ALS sample I – 1.57ppm Au





Photo J / Figure map 6 / quartz vein and my black lab Baron



Photo K / Figure map 4 / quartz swarm / sample quartz vein / 1/4 inch Au seam



Photo K / Figure map 4 / quartz vein sample broken open / visible Au

Appendix 3

E-mail Confirmation of Event

SOW-M (4184803) 2007/DEC/13 21:18:7 Mineral Titles Online, Transaction event, Email confirmation

From: **MT.online@gov.bc.ca**
Sent: December 14, 2007 6:17:52 AM
To: **scottphillips53@msn.com**

Event Number: 4184803

Event Type: Exploration and Development Work / Expiry Date Change

Work Type Code: B

Required Work Amount: 4191.36

Total Work Amount: 8040.00

Total Amount Paid: 420.28

PAC Name: Le Baron

PAC Debit: 0.00

Tenure Number: 509083

Tenure Type: M

Tenure Subtype: C

Claim Name:

Old Good To Date: 2007/dec/15

New Good To Date: 2008/dec/15

Tenure Required Work Amount: 2052.58

Tenure Submission Fee: 205.82

Tenure Number: 509084

Tenure Type: M

Tenure Subtype: C

Claim Name:

Old Good To Date: 2007/dec/17

New Good To Date: 2008/dec/17

Tenure Required Work Amount: 2138.78

Tenure Submission Fee: 214.46

Your technical work report is due in 90 days as per Section 33 of the Mineral Tenure Act and Section 16 and Schedule A of the Mineral Tenure Act Regulation. Please attach a copy of your confirmation page to the front of your report.



ALS Chemex

EXCELLENCE IN ANALYTICAL CHEMISTRY

ALS Canada Ltd

212 Brooksbank Avenue
North Vancouver BC V7J 2C1

Phone: 604 984 0221 Fax: 604 984 0218 www.alschemex.com

To: LE BARON PROSPECTING
9298 CHESTNUT RD.
CHEMAINUS BC V0R 1K5

INVOICE NUMBER 1659236

BILLING INFORMATION	
Certificate:	VA07150705
Sample Type:	Rock
Account:	LEBPRO
Date:	4-JAN-2008
Project:	LE BARON #1
P.O. No.:	TENURE #509083
Quote:	
Terms:	Due on Receipt C3
Comments:	

ANALYSED FOR			UNIT	
QUANTITY	CODE	DESCRIPTION	PRICE	TOTAL
1	BAT-01	Administration Fee	30.00	30.00
6	PREP-31	Crush, Split, Pulverize	6.55	39.30
0.46	PREP-31	Weight Charge (kg) - Crush, Split, Pulverize	0.65	0.30
6	PGM-ICP23	Pt, Pd, Au 30g FA ICP	17.70	106.20

To: **LE BARON PROSPECTING**
ATTN: SCOTT PHILLIPS
9298 CHESTNUT RD.
CHEMAINUS BC V0R 1K5

SUBTOTAL (CAD)	\$	175.80
R100938885 GST	\$	8.79
TOTAL PAYABLE (CAD)	\$	<u>184.59</u>

Payment may be made by: Cheque or Bank Transfer

Beneficiary Name:	ALS Canada Ltd.
Bank:	Royal Bank of Canada
SWIFT:	ROYCCAT2
Address:	Vancouver, BC, CAN
Account:	003-00010-1001098

Please Remit Payments To :

ALS Chemex

212 Brooksbank Avenue
North Vancouver BC V7J 2C1

PAID



ALS Chemex

EXCELLENCE IN ANALYTICAL CHEMISTRY

ALS Canada Ltd.

212 Brooksbank Avenue

North Vancouver BC V7J 2C1

Phone: 604 984 0221 Fax: 604 984 0218 www.alschemex.com

To: LE BARON PROSPECTING
9298 CHESTNUT RD.
CHEMAINUS BC V0R 1K5

Page: 1
Finalized Date: 4-JAN-2008
This copy reported on 11-JAN-2008
Account: LEBPRO

CERTIFICATE VA07150705

Project: LE BARON #1

P.O. No.: TENURE #509083

This report is for 6 Rock samples submitted to our lab in Vancouver, BC, Canada on 17-DEC-2007.

The following have access to data associated with this certificate:

SCOTT PHILLIPS

S. PHILLIPS

SAMPLE PREPARATION

ALS CODE	DESCRIPTION
WEI-21	Received Sample Weight
LOG-22	Sample login - Rcd w/o BarCode
CRU-31	Fine crushing - 70% <2mm
SPL-21	Split sample - riffle splitter
PUL-31	Pulverize split to 85% <75 um

ANALYTICAL PROCEDURES

ALS CODE	DESCRIPTION	INSTRUMENT
PGM-ICP23	Pt, Pd, Au 30g FA ICP	ICP-AES

To: LE BARON PROSPECTING
ATTN: SCOTT PHILLIPS
9298 CHESTNUT RD.
CHEMAINUS BC V0R 1K5

This is the Final Report and supersedes any preliminary report with this certificate number. Results apply to samples as submitted. All pages of this report have been checked and approved for release.

Signature:


Colin Ramshaw, Vancouver Laboratory Manager



ALS Chemex

EXCELLENCE IN ANALYTICAL CHEMISTRY

ALS Canada Ltd.

212 Brooksbank Avenue
North Vancouver BC V7J 2C1

Phone: 604 984 0221 Fax: 604 984 0218 www.alschemex.com

To: LE BARON PROSPECTING
9298 CHESTNUT RD.
CHEMAINUS BC V0R 1K5

Page: 2 - A
Total # Pages: 2 (A)
Finalized Date: 4-JAN-2008
Account: LEBPRO

Project: LE BARON #1

CERTIFICATE OF ANALYSIS VA07150705

Sample Description	Method Analyte Units LOR	WEI-21	PGM-ICP23	PGM-ICP23	PGM-ICP23
		Recvd Wt. kg	Au ppm	Pt ppm	Pd ppm
		0.02	0.001	0.005	0.001
SAMPLE #1		0.06	0.043	<0.005	0.020
SAMPLE #2		0.08	0.018	<0.005	0.006
SAMPLE #3		0.08	0.022	<0.005	0.003
SAMPLE #4		0.04	0.002	<0.005	<0.001
SAMPLE #5		0.08	0.001	<0.005	<0.001
SAMPLE #6		0.12	0.014	<0.005	0.002



ALS Chemex
EXCELLENCE IN ANALYTICAL CHEMISTRY

ALS Canada Ltd.
 212 Brooksbank Avenue
 North Vancouver BC V7J 2C1
 Phone: 604 984 0221 Fax: 604 984 0218 www.alschemex.com

To: **LE BARON PROSPECTING**
9298 CHESTNUT RD.
CHEMAINUS BC V0R 1K5

INVOICE NUMBER 1659262

BILLING INFORMATION	
Certificate:	VA07150706
Sample Type:	Sediment
Account:	LEBPRO
Date:	2-JAN-2008
Project:	LE BARON #1
P.O. No.:	TENURE #509083
Quote:	
Terms:	Due on Receipt C3
Comments:	

ANALYSED FOR				UNIT	TOTAL
QUANTITY	CODE	-	DESCRIPTION	PRICE	
10	LOG-22		Sample login - Rcd w/o BarCode	1.10	11.00
10	PUL-31		Pulverize split to 85% <75 um	3.80	38.00
10	PGM-ICP23		Pt, Pd, Au 30g FA ICP	17.70	177.00

SUBTOTAL (CAD) \$ 226.00

R100938885 GST \$ 11.30

TOTAL PAYABLE (CAD) \$ 237.30

To: **LE BARON PROSPECTING**
ATTN: SCOTT PHILLIPS
9298 CHESTNUT RD.
CHEMAINUS BC V0R 1K5

Payment may be made by: Cheque or Bank Transfer

Beneficiary Name: ALS Canada Ltd.
 Bank: Royal Bank of Canada
 SWIFT: ROYCCAT2
 Address: Vancouver, BC, CAN
 Account: 003-00010-1001098

Please Remit Payments To :
ALS Chemex
 212 Brooksbank Avenue
 North Vancouver BC V7J 2C1

PAID



ALS Chemex

EXCELLENCE IN ANALYTICAL CHEMISTRY

ALS Canada Ltd.

212 Brooksbank Avenue
North Vancouver BC V7J 2C1

Phone: 604 984 0221 Fax: 604 984 0218 www.alschemex.com

To: LE BARON PROSPECTING
9298 CHESTNUT RD.
CHEMAINUS BC V0R 1K5

Page: 1
Finalized Date: 2-JAN-2008
This copy reported on 11-JAN-2008
Account: LEBPRO

CERTIFICATE VA07150706

Project: LE BARON #1

P.O. No.: TENURE #509083

This report is for 10 Sediment samples submitted to our lab in Vancouver, BC, Canada on 17-DEC-2007.

The following have access to data associated with this certificate:

SCOTT PHILLIPS

S. PHILLIPS

SAMPLE PREPARATION

ALS CODE	DESCRIPTION
WEI-21	Received Sample Weight
LOG-22	Sample login - Rcd w/o BarCode
PUL-31	Pulverize split to 85% <75 um

ANALYTICAL PROCEDURES

ALS CODE	DESCRIPTION	INSTRUMENT
PGM-ICP23	Pt, Pd, Au 30g FA ICP	ICP-AES

To: LE BARON PROSPECTING
ATTN: SCOTT PHILLIPS
9298 CHESTNUT RD.
CHEMAINUS BC V0R 1K5

This is the Final Report and supersedes any preliminary report with this certificate number. Results apply to samples as submitted. All pages of this report have been checked and approved for release.

Signature:



Colin Ramshaw, Vancouver Laboratory Manager



ALS Chemex

EXCELLENCE IN ANALYTICAL CHEMISTRY

ALS Canada Ltd.

212 Brooksbank Avenue
North Vancouver BC V7J 2C1

Phone: 604 984 0221 Fax: 604 984 0218 www.alschemex.com

To: LE BARON PROSPECTING
9298 CHESTNUT RD.
CHEMAINUS BC V0R 1K5

Page: 2 - A
Total # Pages: 2 (A)
Finalized Date: 2-JAN-2008
Account: LEBPRO

Project: LE BARON #1

CERTIFICATE OF ANALYSIS VA07150706

Sample Description	Method Analyte Units LOR	WEI-21	PGM-ICP23	PGM-ICP23	PGM-ICP23
		Recvd Wt. kg	Au ppm	Pt ppm	Pd ppm
		0.02	0.001	0.005	0.001
SAMPLE A		0.08	0.030	<0.005	0.003
SAMPLE B		0.14	0.064	<0.005	0.001
SAMPLE C		0.10	0.019	<0.005	0.001
SAMPLE D		0.10	0.013	<0.005	0.001
SAMPLE E		0.06	0.013	<0.005	0.001
SAMPLE F		0.06	0.009	<0.005	0.001
SAMPLE G		0.08	0.004	<0.005	0.002
SAMPLE H		0.08	0.004	<0.005	0.001
SAMPLE I		0.08	1.575	<0.005	0.001
SAMPLE J		0.12	0.004	<0.005	0.001



ALS Chemex
EXCELLENCE IN ANALYTICAL CHEMISTRY

ALS Canada Ltd.
 212 Brooksbank Avenue
 North Vancouver BC V7J 2C1
 Phone: 604 984 0221 Fax: 604 984 0218 www.alschemex.com

To: **LE BARON PROSPECTING**
9298 CHESTNUT RD.
CHEMAINUS BC V0R 1K5

INVOICE NUMBER 1659263

BILLING INFORMATION	
Certificate:	VA07150707
Sample Type:	Humus
Account:	LEBPRO
Date:	3-JAN-2008
Project:	LE BARON #1
P.O. No.:	TENURE #509083
Quote:	
Terms:	Due on Receipt C3
Comments:	

ANALYSED FOR			UNIT	TOTAL
QUANTITY	CODE	DESCRIPTION	PRICE	
4	PREP-41	Dry, Sieve (180 um) Soil	1.35	5.40
0.34	PREP-41	Weight Charge (kg) - Dry, Sieve (180 um) Soil	2.20	0.75
4	PGM-ICP23	Pt, Pd, Au 30g FA ICP	17.70	70.80

To: **LE BARON PROSPECTING**
ATTN: SCOTT PHILLIPS
9298 CHESTNUT RD.
CHEMAINUS BC V0R 1K5

SUBTOTAL (CAD) \$ 76.95
 R100938885 GST \$ 3.85
TOTAL PAYABLE (CAD) \$ 80.80

Payment may be made by: Cheque or Bank Transfer

Beneficiary Name: ALS Canada Ltd.
 Bank: Royal Bank of Canada
 SWIFT: ROYCCAT2
 Address: Vancouver, BC, CAN
 Account: 003-00010-1001098

Please Remit Payments To :
ALS Chemex
 212 Brooksbank Avenue
 North Vancouver BC V7J 2C1

PAID



ALS Chemex

EXCELLENCE IN ANALYTICAL CHEMISTRY

ALS Canada Ltd.

212 Brooksbank Avenue
North Vancouver BC V7J 2C1

Phone: 604 984 0221 Fax: 604 984 0218 www.alschemex.com

To: LE BARON PROSPECTING
9298 CHESTNUT RD.
CHEMAINUS BC V0R 1K5

Page: 1
Finalized Date: 3-JAN-2008
This copy reported on 11-JAN-2008
Account: LEBPRO

CERTIFICATE VA07150707

Project: LE BARON #1

P.O. No.: TENURE #509083

This report is for 4 Humus samples submitted to our lab in Vancouver, BC, Canada on 17-DEC-2007.

The following have access to data associated with this certificate:

SCOTT PHILLIPS

S. PHILLIPS

SAMPLE PREPARATION

ALS CODE	DESCRIPTION
WEI-21	Received Sample Weight
LOG-22	Sample login - Rcd w/o BarCode
SCR-41	Screen to -180um and save both

ANALYTICAL PROCEDURES

ALS CODE	DESCRIPTION	INSTRUMENT
PGM-ICP23	Pt, Pd, Au 30g FA ICP	ICP-AES

To: LE BARON PROSPECTING
ATTN: SCOTT PHILLIPS
9298 CHESTNUT RD.
CHEMAINUS BC V0R 1K5

This is the Final Report and supersedes any preliminary report with this certificate number. Results apply to samples as submitted. All pages of this report have been checked and approved for release.

Signature:



Colin Ramshaw, Vancouver Laboratory Manager



ALS Chemex

EXCELLENCE IN ANALYTICAL CHEMISTRY

ALS Canada Ltd.

212 Brooksbank Avenue

North Vancouver BC V7J 2C1

Phone: 604 984 0221 Fax: 604 984 0218 www.alschemex.com

To: LE BARON PROSPECTING

9298 CHESTNUT RD.

CHEMAINUS BC V0R 1K5

Page: 2 - A

Total # Pages: 2 (A)

Finalized Date: 3-JAN-2008

Account: LEBPRO

Project: LE BARON #1

CERTIFICATE OF ANALYSIS VA07150707

Sample Description	Method	WEI-21	PGM-ICP23	PGM-ICP23	PGM-ICP23
	Analyte	Recvd Wt.	Au	Pt	Pd
	Units	kg	ppm	ppm	ppm
	LOR	0.02	0.001	0.005	0.001
SAMPLE K		0.08	0.009	<0.005	0.001
SAMPLE L		0.06	0.012	0.012	0.002
SAMPLE M		0.08	0.010	<0.005	0.005
SAMPLE N		0.12	0.008	<0.005	0.004