

RECEIVED

MAR 28 2008

Gold Commissioner's Office
VANCOUVER, B.C.

BC Geological Survey
Assessment Report
29784

**2007 Preliminary Sampling & Geochemical Report
on the
White Channel Group**

Cariboo Mining Division
BCGS 093A-033
Lat.52°19'11" Lon. 121°30'

Owned by: Rudy C. Riepe
Operated by: Performance Minerals Canada Ltd.,

Prepared by: Rudy C. Riepe, Owner
P.O. Box 69, Sechelt, B.C., V0N 3A1

BC GEOLOGICAL SURVEY BRANCH
ASSESSMENT REPORT
29784

LIST OF CONTENTS

- Fig 1 - 1:40000 Location & Access
Fig 2 - 1:25000 Topo & Tenure Detail
Fig 3 - 1:7000 2007 Work location & sample points
Fig 4 - Historical location map (after Panteleyev etal 1996)

- Page 4 Introduction & Geology
Page 5 Technical Summeries & Progress
Page 6 Statement of Costs
7 *References*

Enclosures

- 1) AI's Chemex Certificate #VA08000736 - 3 pages
- 2) AI's Chemex Certificate #VA08000737 - 3 pages
2 6 - 739 6 "
- 3) Acme Labs Ltd. File #95-2846 and Sample #E66764
- 4) Photos (10 pages)
 - a) Before & After Stripping
 - b) Typical Excavation at micaceous showings
 - c) General Condition surrounding the project

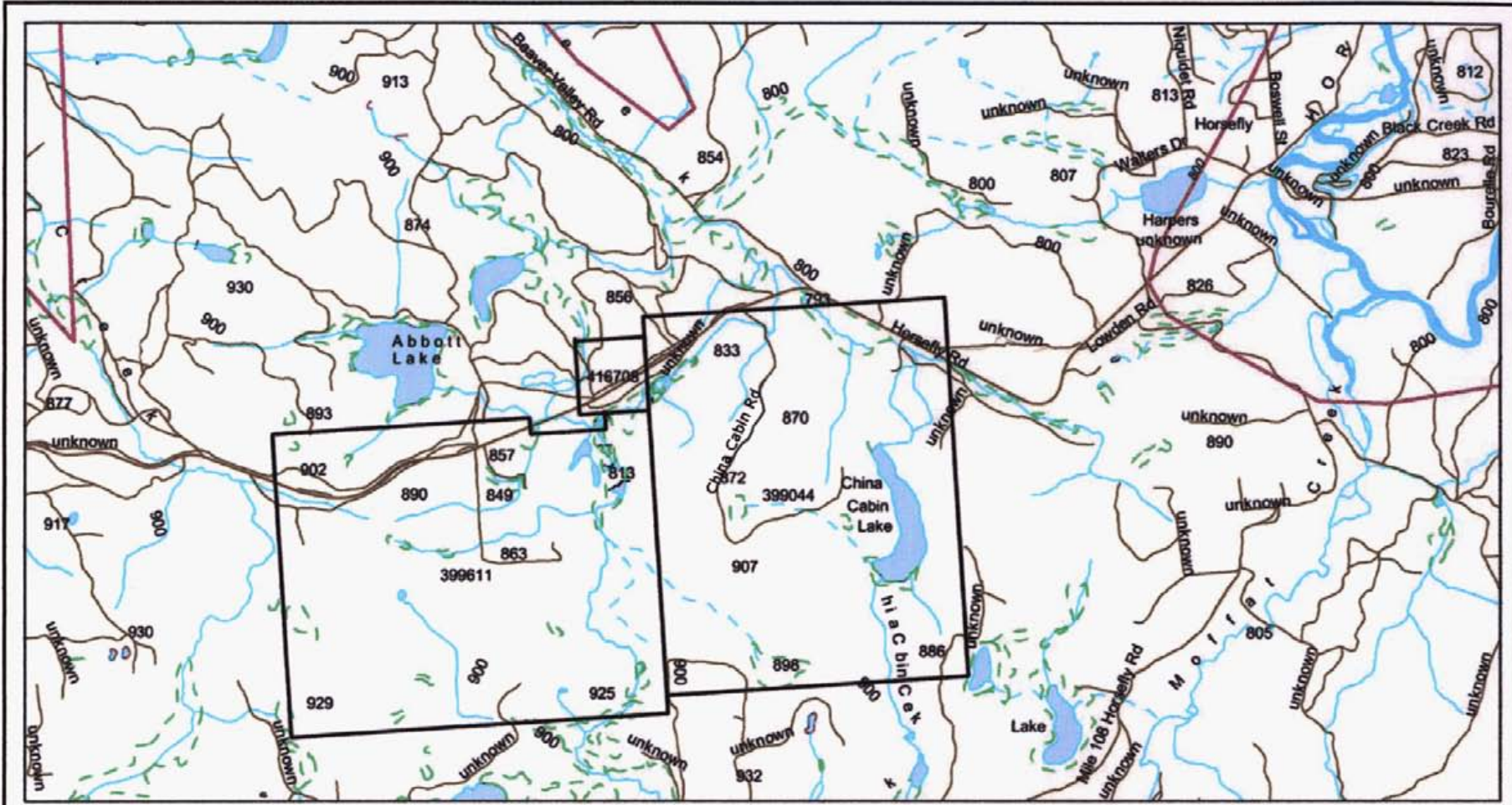


Figure 1 Location & Access
White Channel Project

ACCESS: From Horsefly, travel 4.3km SSW on Horsefly Road, turn S 336m to Screening Area A and site 1, follow logging access road SSE 2.5km to final sites 8 & 9 (total distance from Horsefly 6.8km to final sites)



Scale 1: 40000

Mapsheet 09A.033

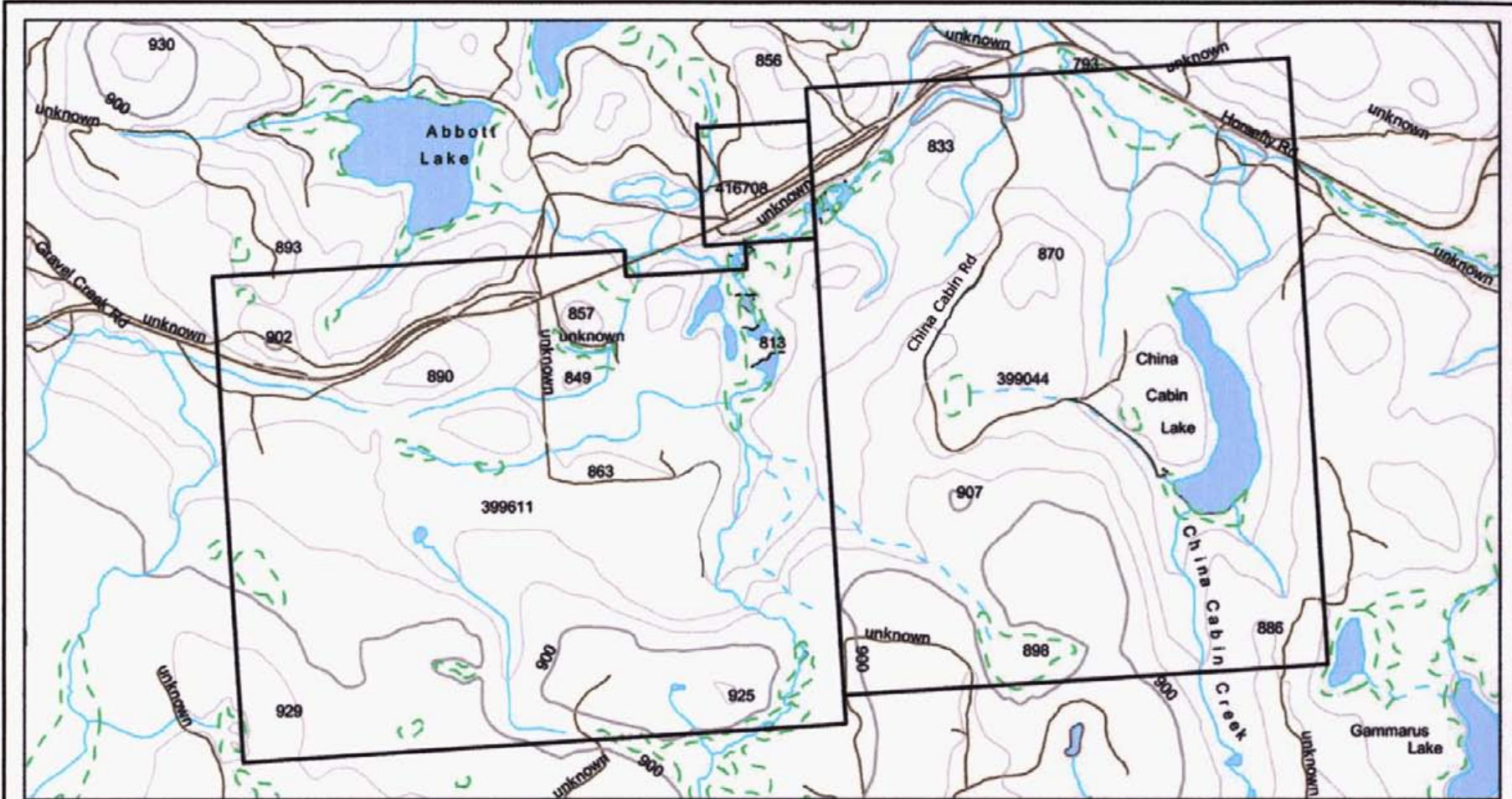


Figure 2
 Tenure Detail & Topography
 Mineral Claims
 399044, 399611, 416708



Scale 1: 25000

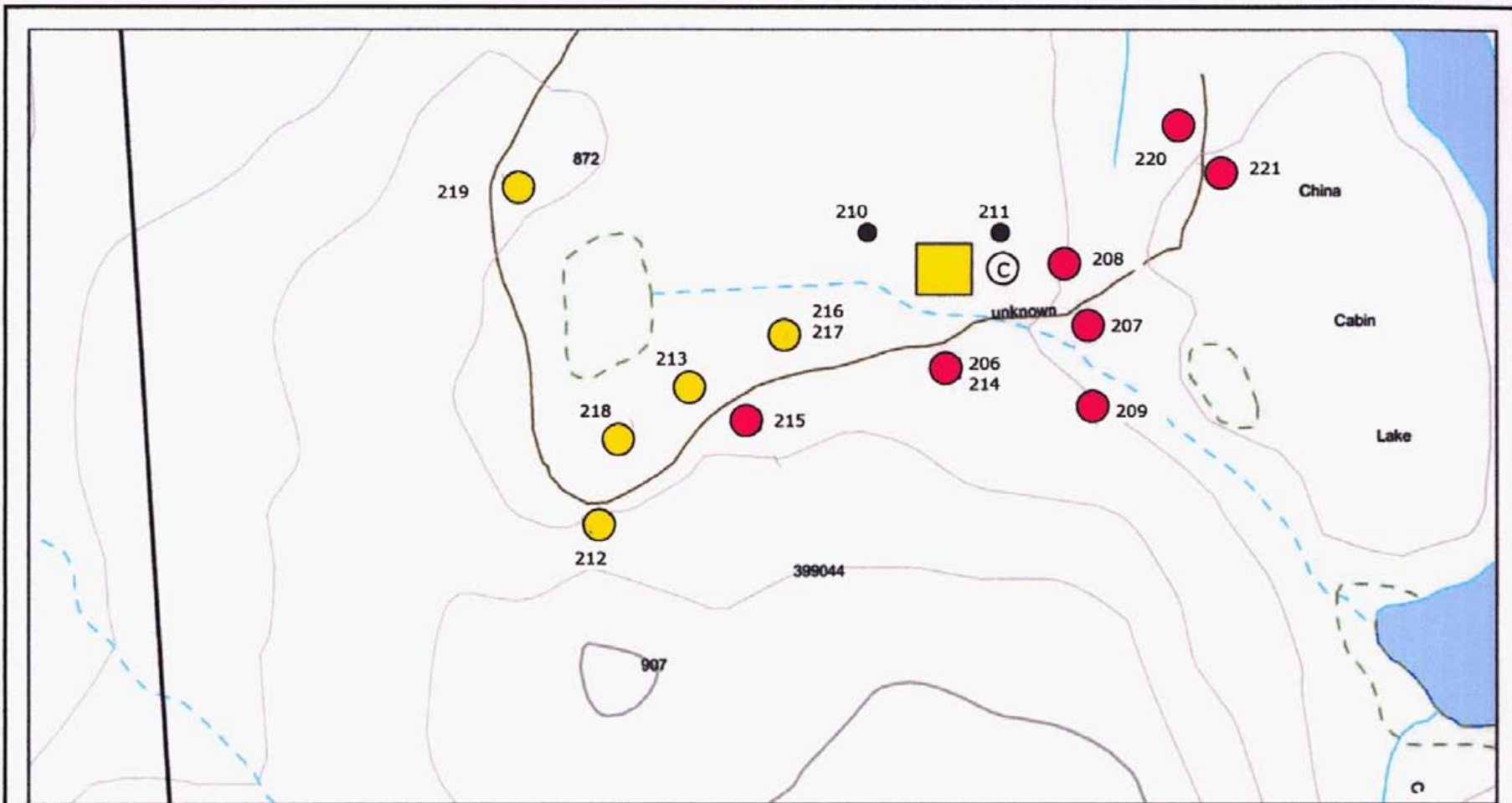


Figure 3 2007 Work Detail
White Channel Project



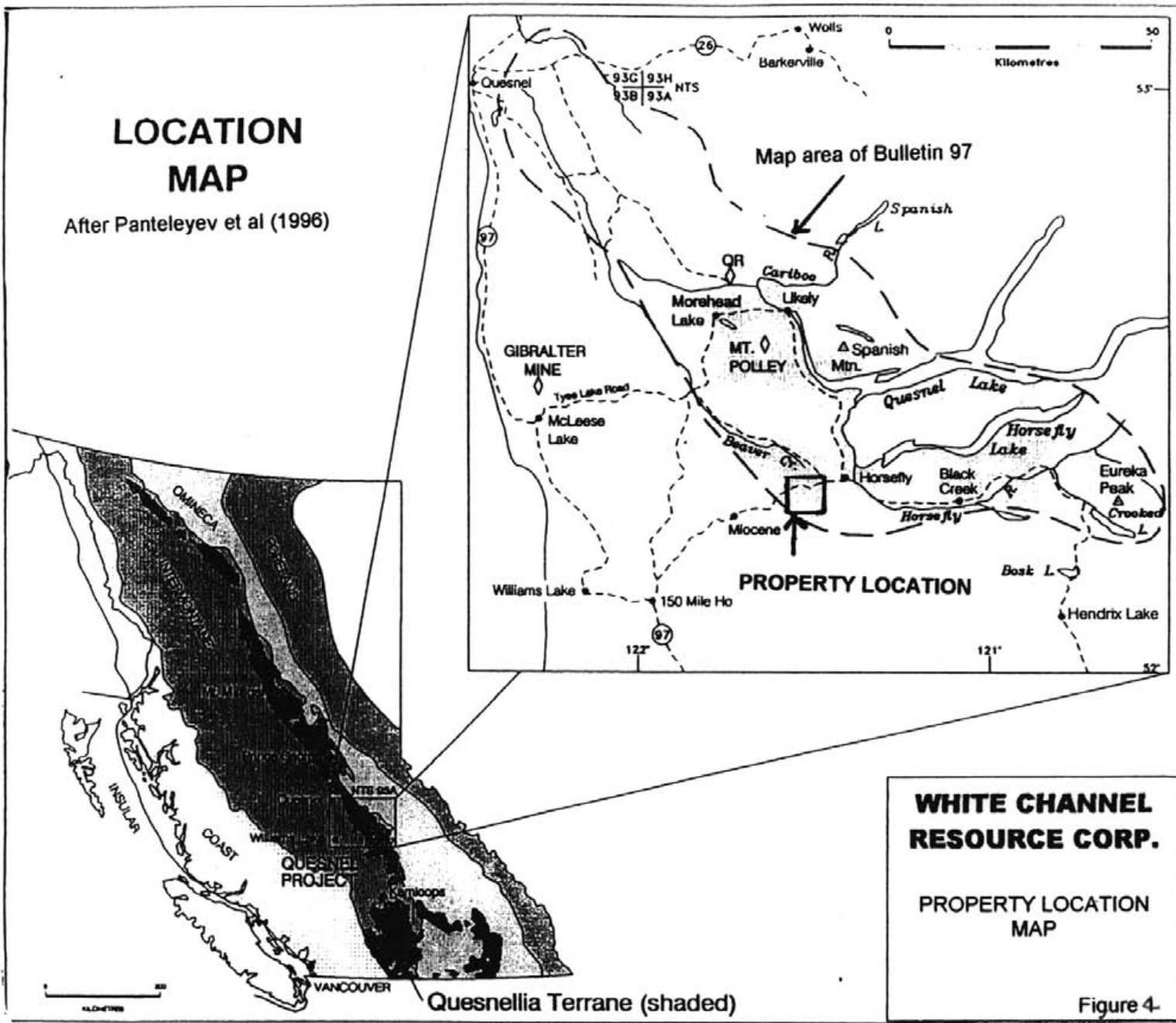
Scale 1: 7000

Legend

- Stockpile
- Secure Storage
- Si Sample location
- Cu Sample location
- Si_{2n}O_{5n} Sample location
- Road/Trail
- - - - - Creek

LOCATION MAP

After Panteleyev et al (1996)



Introduction

The White Channel Camp is envisioned to be the startup location of an Industrial Mineral Operation supplying a number of products such as landscape rock, cement additives, silicon, mica, artisan clay other and architectural materials.

The claims (Record #s 399044, 399611, 416708) are ideally located 3 km west on paved highway from Horsefly to Williams Lake.

Considerable increases in prices and demands for silicon (semi-conductor) and rare earth oxides holds promise for exploration and possible development. A new industry would be of great benefit to the Horsefly area at this time.

Regional Geology

Regional geology has been well documented in Bulletin 97 Ref. Panteleyev (1996) et.al.

Technical Data and Local Geology

The local geology represents typical Cariboo complexity with Flow Remnants of Miocene Basaltic age, with occasional window displaying underlying white channel clasts, being part of a much older Cariboo basement with origin to the North-East.

These gravels consist of well rounded white quartz and minor micaceous sericite clays rather loosely cemented made up of 1 cm to 10 cm of white aggregates within the clays.

The East and Northeast parts of the Claim Group are covered by older Triassic volcanics, mostly grey to green Alkali Basalts, when oxidized appears red to maroon on the surface. Represented by Fig. 3 location number 219, 218, 220, 221.

The northern part of Kydr #3 (Rec. # 399611) was reported on by Kruchowski (1978) identifying a cohesive blue clay over and underlying the quartz gravels passing downward into well sorted and rounded coarse quartz sand.

The author obtained from the same area in 1995 near the highway a sample #95-2846 enclosed with whole rock and REE pages by Acme REE sample #E66764. (See enclosures.)

To the west, the flat-lying Miocene Flows are evident along a front of over 2 km. South to North substantial areas of white channel material are covered up.



WHITE CHANNEL GROUP

Summary

This is a preliminary report of a Quartz Pebble occurrences (Historically known as "White Channel") and it's evaluation for high grade Silica source together with possible recovery of a micaceous (Muscovite) byproduct from a sericite clay gangue and to establish a photographic record on sites .

Work Performed

- a) Supervising the clearing of sample areas and selection of prelim samples for assay.
- b) Stripping the shallow overburden to prepare for sample processing in 2008 (see permit)
- c) Consulting with overlying Wood lot and it's Owners in matters of environmental care and efficiency for this project

Work Ahead

- 1) Bench testing of the micaceous Clays
- 2) Set-up Screening Plant
- 3) Test samples suitability for Artisans & Industries
- 4) Test & explain prominent magnetic anomaly at North End (possible drill test)

Results

Surface area of Silica

| | | |
|------------|-----|-----------------------------|
| Sample #'s | 206 | |
| Fig 3 | 207 | All Showed excellent assays |
| | 208 | (unwashed samples) |
| | 209 | |

19 Photos

Photographs of the site during 2007 stripping are arranged

- a) Before & After of areas being stripped by excavator
- b) Picture of sample site for Rock & Clay
- c) General look at surface conditions

STATEMENT OF COSTS

WHITE CHANNEL GROUP
As at December 10, 2007

Work on White Channel #1 mineral claim was performed by Rudy C. Riepe, experienced prospector:

6 Field Days @ \$400/per day \$2,400.00

2 Office days @ \$200/per day \$ 400.00

Contractor ABCo. Heavy Equipment
Nov. 8-13/2007 Excavator work
using 2800 Linkbelt @\$125.00/per hour
Total 32 hours \$4,000.00

Work Subtotal \$6,800.00

Truck 4x4 6 days @ \$120.00/per day \$ 720.00

Expenses and Travel \$ 615.00.

Copies & Supplies \$ 60.00

Invoices Al's Chemex Re: Assays \$ 852.12

Grand Total \$9,020.12

Certified true and correct


Signed: Rudy C. Riepe

The Owner a Free Miner & Tenure Holder continues since 1958 in BC.



REFERENCES

Kruchowski, E.R. (1978)

Drill Report Malcolm I and Sam Claims,
Horsefly area

Panteleyev A., Bailey D.G., Bloodgood M.A., and Hancock K.D. (1996)

Geology and Mineral Deposits of the Quesnel River
Horsefly Map Area B.C. (Bulletin 97, B.C. Geological
Survey Branch 156 pages.)



ALS Chemex

EXCELLENCE IN ANALYTICAL CHEMISTRY

ALS Canada Ltd.

212 Brooksbank Avenue

North Vancouver BC V7J 2C1

Phone: 604 984 0221 Fax: 604 984 0218 www.alschemex.com

To: PERFORMANCE MINERALS OF CANADA LTD.

PO BOX 69

SECHLT BC V0N 3A0

Page: 1

Finalized Date: 14-JAN-2008

Account: BPE

CERTIFICATE VA08000737

SAMPLE PREPARATION

Project: WHITE CHANNEL

P.O. No.:

This report is for 4 Rock samples submitted to our lab in Vancouver, BC, Canada on 8-JAN-2008.

The following have access to data associated with this certificate:

RUDY RIEPE

ALS CODE

DESCRIPTION

WEI-21

Received Sample Weight

LOG-22

Sample login - Rcd w/o BarCode

CRU-31

Fine crushing - 70% <2mm

SPL-21

Split sample - riffle splitter

PUL-31

Pulverize split to 85% <75 um

ANALYTICAL PROCEDURES

ALS CODE

DESCRIPTION

INSTRUMENT

ME-XRF06

Whole Rock Package - XRF

XRF

OA-GRA06

LOI for ME-XRF06

WST-SIM

Au-ST44

Super Trace Au - 50g AR

VARIABLE

Enclosure 1

Final Cert.

Originals.

To: PERFORMANCE MINERALS OF CANADA LTD.

ATTN: RUDY RIEPE

PO BOX 69

SECHLT BC V0N 3A0

This is the Final Report and supersedes any preliminary report with this certificate number. Results apply to samples as submitted. All pages of this report have been checked and approved for release.

Signature:

Colin Ramshaw, Vancouver Laboratory Manager



ALS Chemex

EXCELLENCE IN ANALYTICAL CHEMISTRY

ALS Canada Ltd.

212 Brooksbank Avenue

North Vancouver BC V7J 2C1

Phone: 604 984 0221 Fax: 604 984 0218 www.alschemex.com

To: PERFORMANCE MINERALS OF CANADA LTD.

PO BOX 69

SECHLT BC V0N 3A0

Page: 2 - A

Total # Pages: 2 (A - B)

Finalized Date: 14-JAN-2008

Account: BPE

Project: WHITE CHANNEL

CERTIFICATE OF ANALYSIS VA08000737

| Sample Description | Method Analyte Units LOR | WEI-21 | ME-XRF06 | ME-XRF06 | ME-XRF06 | ME-XRF06 | ME-XRF06 | ME-XRF06 | ME-XRF06 | ME-XRF06 | ME-XRF06 | ME-XRF06 | ME-XRF06 | ME-XRF06 | ME-XRF06 | |
|--------------------|-----------------------------------|-----------|----------|----------|----------|----------|----------|----------|----------|----------|----------|----------|----------|----------|----------|------|
| | | Recvd Wt. | SiO2 | Al2O3 | Fe2O3 | CaO | MgO | Na2O | K2O | Cr2O3 | TiO2 | MnO | P2O5 | SrO | BaO | LOI |
| | | kg | % | % | % | % | % | % | % | % | % | % | % | % | % | % |
| | | 0.02 | 0.01 | 0.01 | 0.01 | 0.01 | 0.01 | 0.01 | 0.01 | 0.01 | 0.01 | 0.01 | 0.01 | 0.01 | 0.01 | |
| B459206 | | 1.09 | 99.00 | 0.10 | 0.51 | 0.01 | 0.05 | 0.04 | 0.03 | 0.01 | 0.03 | <0.01 | <0.001 | <0.01 | 0.02 | 0.02 |
| B459207 | | 2.43 | 99.02 | 0.11 | 0.49 | 0.01 | 0.06 | 0.04 | 0.03 | <0.01 | 0.04 | <0.01 | <0.001 | <0.01 | 0.02 | 0.03 |
| B459208 | | 1.62 | 98.77 | 0.12 | 0.49 | <0.01 | 0.06 | 0.04 | 0.04 | 0.01 | 0.03 | <0.01 | <0.001 | 0.01 | 0.02 | 0.06 |
| B459209 | | 1.19 | 99.03 | 0.13 | 0.52 | <0.01 | 0.05 | 0.04 | 0.04 | <0.01 | 0.03 | <0.01 | <0.001 | <0.01 | 0.02 | 0.02 |



ALS Chemex

EXCELLENCE IN ANALYTICAL CHEMISTRY

ALS Canada Ltd.

212 Brooksbank Avenue
North Vancouver BC V7J 2C1

Phone: 604 984 0221 Fax: 604 984 0218 www.alschemex.com

To: PERFORMANCE MINERALS OF CANADA LTD.

PO BOX 69

SECHLT BC V0N 3A0

Page: 2 - B

Total # Pages: 2 (A - B)

Finalized Date: 14-JAN-2008

Account: BPE

Project: WHITE CHANNEL

CERTIFICATE OF ANALYSIS VA08000737

| Sample Description | Method Analyte Units LOI | ME-XRF06 | Au-ST44 |
|--------------------|-----------------------------------|------------|-----------|
| | | Total % | Au ppm |
| | | 0.01 | 0.0001 |
| B459206 | | 99.82 | 0.0018 |
| B459207 | | 99.85 | 0.0015 |
| B459208 | | 99.65 | 0.0024 |
| B459209 | | 99.88 | 0.0003 |



ALS Chemex
EXCELLENCE IN ANALYTICAL CHEMISTRY

ALS Canada Ltd.
 212 Brooksbank Avenue
 North Vancouver BC V7J 2C1
 Phone: 604 984 0221 Fax: 604 984 0218 www.alschemex.com

To: PERFORMANCE MINERALS OF CANADA LTD.
 PO BOX 69
 SECHLT BC V0N 3A0

Page: 1
 Finalized Date: 14-JAN-2008
 Account: BPE

CERTIFICATE VA08000736

Project: WHITE CHANNEL
 P.O. No.:
 This report is for 4 Sediment samples submitted to our lab in Vancouver, BC, Canada on 8-JAN-2008.
 The following have access to data associated with this certificate:
 RUDY RIEPE

SAMPLE PREPARATION

| ALS CODE | DESCRIPTION |
|----------|--------------------------------|
| WEI-21 | Received Sample Weight |
| PUL-QC | Pulverizing QC Test |
| LOG-22 | Sample login - Rcd w/o BarCode |
| CRU-31 | Fine crushing - 70% <2mm |
| SPL-21 | Split sample - riffle splitter |
| PUL-31 | Pulverize split to 85% <75 um |

ANALYTICAL PROCEDURES

| ALS CODE | DESCRIPTION | INSTRUMENT |
|----------|--------------------------|------------|
| ME-XRF06 | Whole Rock Package - XRF | XRF |
| OA-GRA06 | LOI for ME-XRF06 | WST-SIM |
| Au-ST44 | Super Trace Au - 50g AR | VARIABLE |

Enclosure 2

To: PERFORMANCE MINERALS OF CANADA LTD.
 ATTN: RUDY RIEPE
 PO BOX 69
 SECHLT BC V0N 3A0

Performance Minerals

This is the Final Report and supersedes any preliminary report with this certificate number. Results apply to samples as submitted. All pages of this report have been checked and approved for release.

Signature:


 Colin Ramshaw, Vancouver Laboratory Manager



ALS Chemex

EXCELLENCE IN ANALYTICAL CHEMISTRY

ALS Canada Ltd.

212 Brooksbank Avenue

North Vancouver BC V7J 2C1

Phone: 604 984 0221 Fax: 604 984 0218 www.alschemex.com

To: PERFORMANCE MINERALS OF CANADA LTD.

PO BOX 69

SECHLT BC V0N 3A0

Page: 2 - A

Total # Pages: 2 (A - B)

Finalized Date: 14-JAN-2008

Account: BPE

Project: WHITE CHANNEL

CERTIFICATE OF ANALYSIS VA08000736

| Sample Description | Method Analyte Units LOL | WE1-21 | ME-XRF06 | ME-XRF06 | ME-XRF06 | ME-XRF06 | ME-XRF06 | ME-XRF06 | ME-XRF06 | ME-XRF06 | ME-XRF06 | ME-XRF06 | ME-XRF06 | ME-XRF06 | ME-XRF06 | |
|--------------------|-----------------------------------|----------|----------|----------|----------|----------|----------|----------|----------|----------|----------|----------|----------|----------|----------|------|
| | | Recvd WL | SiO2 | Al2O3 | Fe2O3 | CaO | MgO | Na2O | K2O | Cr2O3 | TiO2 | MnO | P2O5 | SrO | BaO | LOI |
| | | kg | % | % | % | % | % | % | % | % | % | % | % | % | % | |
| | | 0.02 | 0.01 | 0.01 | 0.01 | 0.01 | 0.01 | 0.01 | 0.01 | 0.01 | 0.01 | 0.001 | 0.01 | 0.01 | 0.01 | |
| B459210 | | 1.14 | 74.43 | 9.30 | 5.11 | 1.70 | 1.47 | 1.01 | 1.65 | 0.02 | 0.87 | 0.07 | 0.070 | 0.03 | 0.09 | 3.80 |
| B459212 | | 0.98 | 67.00 | 19.03 | 2.08 | 0.31 | 0.65 | 0.31 | 1.23 | 0.01 | 1.30 | 0.02 | 0.027 | 0.01 | 0.09 | 7.87 |
| B459214 | | 0.94 | 66.28 | 14.58 | 5.28 | 1.89 | 1.91 | 1.35 | 2.19 | 0.02 | 0.91 | 0.08 | 0.130 | 0.03 | 0.11 | 4.75 |
| B459217 | | 1.01 | 64.56 | 16.75 | 4.60 | 1.44 | 1.78 | 1.05 | 2.26 | 0.02 | 0.95 | 0.06 | 0.099 | 0.02 | 0.12 | 6.04 |



ALS Chemex

EXCELLENCE IN ANALYTICAL CHEMISTRY

ALS Canada Ltd.

212 Brooksbank Avenue

North Vancouver BC V7J 2C1

Phone: 604 984 0221 Fax: 604 984 0218 www.alschemex.com

To: PERFORMANCE MINERALS OF CANADA LTD.

PO BOX 69

SECHLT BC V0N 3A0

Page: 2 - B

Total # Pages: 2 (A - B)

Finalized Date: 14-JAN-2008

Account: BPE

Project: WHITE CHANNEL

CERTIFICATE OF ANALYSIS VA08000736

| Sample Description | Method | ME-XRF06 | Au-ST44 |
|--------------------|---------|----------|---------|
| | Analyte | Total | Au |
| | Units | % | ppm |
| | LOR | 0.01 | 0.0001 |
| B459210 | | 99.62 | |
| B459212 | | 99.93 | 0.0045 |
| B459214 | | 99.51 | 0.0024 |
| B459217 | | 99.76 | 0.0028 |



ALS Chemex

EXCELLENCE IN ANALYTICAL CHEMISTRY

ALS Canada Ltd.

212 Brooksbank Avenue
North Vancouver BC V7J 2C1

Phone: 604 984 0221 Fax: 604 984 0218 www.alschemex.com

To: PERFORMANCE MINERALS OF CANADA LTD.

PO BOX 69

SECHLT BC V0N 3A0

Page: 1

Finalized Date: 11-FEB-2008

Account: BPE

CERTIFICATE VA08000738

Project: WHITE CHANNEL

P.O. No.:

This report is for 8 Rock samples submitted to our lab in Vancouver, BC, Canada on 8-JAN-2008.

The following have access to data associated with this certificate:

RUDY RIEPE

SAMPLE PREPARATION

| ALS CODE | DESCRIPTION |
|----------|--------------------------------|
| WEI-21 | Received Sample Weight |
| LOG-22 | Sample login - Rcd w/o BarCode |
| CRU-31 | Fine crushing - 70% <2mm |
| SPL-21 | Split sample - riffle splitter |
| PUL-31 | Pulverize split to 85% <75 um |

ANALYTICAL PROCEDURES

| ALS CODE | DESCRIPTION | INSTRUMENT |
|----------|-----------------------------|------------|
| Au-ST44 | Super Trace Au - 50g AR | VARIABLE |
| ME-MS61 | 48 element four acid ICP-MS | |

Enclosure 26

Originals.

To: PERFORMANCE MINERALS OF CANADA LTD.
ATTN: RUDY RIEPE
PO BOX 69
SECHLT BC V0N 3A0

This is the Final Report and supersedes any preliminary report with this certificate number. Results apply to samples as submitted. All pages of this report have been checked and approved for release.

Signature:


Colin Ramshaw, Vancouver Laboratory Manager



ALS Chemex

EXCELLENCE IN ANALYTICAL CHEMISTRY

ALS Canada Ltd.

212 Brooksbank Avenue
North Vancouver BC V7J 2C1

Phone: 604 984 0221 Fax: 604 984 0218 www.alschemex.com

To: PERFORMANCE MINERALS OF CANADA LTD.
PO BOX 69
SECHLT BC V0N 3A0

Page: 2 - A
Total # Pages: 2 (A - D)
Plus Appendix Pages
Finalized Date: 11-FEB-2008
Account: BPE

Project: WHITE CHANNEL

CERTIFICATE OF ANALYSIS VA08000738

| Method Analyte Units LOR | WEI-21 Recvd Wt. kg | ME-MS61 Ag ppm | ME-MS61 Al % | ME-MS61 As ppm | ME-MS61 Ba ppm | ME-MS61 Be ppm | ME-MS61 Bi ppm | ME-MS61 Ca % | ME-MS61 Cd ppm | ME-MS61 Ce ppm | ME-MS61 Co ppm | ME-MS61 Cr ppm | ME-MS61 Cs ppm | ME-MS61 Cu ppm | ME-MS61 Fe % |
|-----------------------------------|---------------------------|----------------------|--------------------|----------------------|----------------------|----------------------|----------------------|--------------------|----------------------|----------------------|----------------------|----------------------|----------------------|----------------------|--------------------|
| Sample Description | 0.02 | 0.01 | 0.01 | 0.2 | 10 | 0.05 | 0.01 | 0.01 | 0.02 | 0.01 | 0.1 | 1 | 0.05 | 0.2 | 0.01 |
| B459211 | 0.41 | 0.02 | 4.37 | 0.7 | 530 | 0.96 | 0.08 | 2.14 | 0.13 | 31.6 | 19.4 | 139 | 0.74 | 18.7 | 3.68 |
| B459213 | 1.05 | 0.08 | 3.71 | 8.2 | 690 | 0.66 | 0.06 | 1.18 | 0.16 | 25.6 | 14.8 | 62 | 1.73 | 26.9 | 2.94 |
| B459215 | 1.37 | 0.06 | 3.86 | 2.1 | 470 | 0.86 | 0.06 | 1.8 | 0.15 | 29.9 | 19.7 | 120 | 0.68 | 18.2 | 3.79 |
| B459216 | 1.73 | 0.04 | 3.62 | 1.6 | 390 | 0.83 | 0.13 | 1.79 | 0.1 | 25.4 | 19.9 | 106 | 0.58 | 17.9 | 3.53 |
| B459218 | 1.32 | 0.06 | 7.26 | 16.2 | 1090 | 0.85 | 0.01 | 4.75 | 0.22 | 14.05 | 33 | 100 | 0.69 | 77.6 | 6.82 |
| B459219 | 1.43 | 0.01 | 7.37 | 22.4 | 1470 | 0.95 | 0.02 | 5.99 | 0.16 | 14.2 | 30.5 | 112 | 0.53 | 20.2 | 6.78 |
| B459220 | 1.36 | 0.01 | 8.24 | 6.9 | 1060 | 0.62 | 0.02 | 1.55 | 0.17 | 20 | 6.6 | 12 | 2.47 | 27.6 | 2.42 |
| B459221 | 1.12 | 0.03 | 7.71 | 11.5 | 1400 | 0.91 | 0.02 | 2.92 | 0.18 | 15.2 | 17.7 | 88 | 2.25 | 33.4 | 4.43 |



ALS Chemex

EXCELLENCE IN ANALYTICAL CHEMISTRY

ALS Canada Ltd.

212 Brooksbank Avenue

North Vancouver BC V7J 2C1

Phone: 604 984 0221 Fax: 604 984 0218 www.alschemex.com

To: PERFORMANCE MINERALS OF CANADA LTD.

PO BOX 69

SECHLT BC V0N 3A0

Page: 2 - B

Total # Pages: 2 (A - D)

Plus Appendix Pages

Finalized Date: 11-FEB-2008

Account: BPE

Project: WHITE CHANNEL

CERTIFICATE OF ANALYSIS VA08000738

| Sample Description | Method Analyte Units LOR | ME-MS61 | ME-MS61 | ME-MS61 | ME-MS61 | ME-MS61 | ME-MS61 | ME-MS61 | ME-MS61 | ME-MS61 | ME-MS61 | ME-MS61 | ME-MS61 | ME-MS61 | ME-MS61 | |
|--------------------|-----------------------------------|-----------|-----------|-----------|-----------|---------|-----------|-----------|---------|-----------|-----------|---------|-----------|-----------|----------|-----------|
| | | Ge ppm | Ge ppm | Hf ppm | In ppm | K % | La ppm | Li ppm | Mg % | Mn ppm | Mo ppm | Na % | Nb ppm | Ni ppm | P ppm | Pb ppm |
| | | 0.05 | 0.05 | 0.1 | 0.005 | 0.01 | 0.5 | 0.2 | 0.01 | 5 | 0.05 | 0.01 | 0.1 | 0.2 | 10 | 0.5 |
| B459211 | | 12.6 | 0.15 | 1.9 | 0.042 | 0.79 | 15.7 | 10.2 | 1.15 | 449 | 2.69 | 0.83 | 12.3 | 41.9 | 770 | 14.5 |
| B459213 | | 8.47 | 0.1 | 0.9 | 0.025 | 1.21 | 13.4 | 16.5 | 0.94 | 395 | 2.55 | 0.62 | 5.3 | 44.8 | 530 | 12.9 |
| B459215 | | 10.5 | 0.17 | 1.6 | 0.03 | 0.73 | 15 | 8.9 | 0.88 | 540 | 1.62 | 0.62 | 11 | 42.9 | 550 | 17.8 |
| B459216 | | 10.3 | 0.17 | 1.6 | 0.031 | 0.61 | 13.4 | 7.6 | 1.01 | 473 | 1.69 | 0.67 | 10.7 | 42.2 | 660 | 9.7 |
| B459218 | | 14.5 | 0.24 | 1.3 | 0.044 | 2.27 | 7 | 45.8 | 4.1 | 1520 | 1.01 | 2.31 | 2.1 | 48.1 | 1590 | 21.9 |
| B459219 | | 14.3 | 0.27 | 1.3 | 0.047 | 3.79 | 7 | 42.6 | 3.38 | 1325 | 1.05 | 1.4 | 2.2 | 51.6 | 1530 | 20.7 |
| B459220 | | 18.1 | 0.17 | 2.2 | 0.021 | 1.99 | 9.9 | 16.8 | 0.33 | 748 | 0.75 | 3.47 | 3.3 | 5.8 | 780 | 7.4 |
| B459221 | | 16.3 | 0.19 | 2 | 0.032 | 3.12 | 7.5 | 34.5 | 2.19 | 1720 | 0.86 | 2.79 | 2.5 | 36.7 | 1260 | 10.7 |



ALS Chemex

EXCELLENCE IN ANALYTICAL CHEMISTRY

ALS Canada Ltd.

212 Brooksbank Avenue

North Vancouver BC V7J 2C1

Phone: 604 984 0221 Fax: 604 984 0218 www.alschemex.com

To: PERFORMANCE MINERALS OF CANADA LTD.

PO BOX 69

SECHLT BC V0N 3A0

Page: 2 - C

Total # Pages: 2 (A - D)

Plus Appendix Pages

Finalized Date: 11-FEB-2008

Account: BPE

Project: WHITE CHANNEL

CERTIFICATE OF ANALYSIS VA08000738

| Sample Description | Method Analyte Units LOR | ME-MS61 | ME-MS61 | ME-MS61 | ME-MS61 | ME-MS61 | ME-MS61 | ME-MS61 | ME-MS61 | ME-MS61 | ME-MS61 | ME-MS61 | ME-MS61 | ME-MS61 | ME-MS61 | |
|--------------------|-----------------------------------|-----------|-----------|---------|-----------|-----------|-----------|-----------|-----------|-----------|-----------|-----------|---------|-----------|-----------|----------|
| | | Rb ppm | Re ppm | S % | Sb ppm | Sc ppm | Se ppm | Sn ppm | Sr ppm | Ta ppm | Tb ppm | Th ppm | Ti % | Tl ppm | Tm ppm | V ppm |
| | | 0.1 | 0.002 | 0.01 | 0.05 | 0.1 | 1 | 0.2 | 0.2 | 0.05 | 0.05 | 0.2 | 0.005 | 0.02 | 0.1 | 1 |
| B459211 | | 25.2 | <0.002 | 0.01 | 0.28 | 11.7 | 2 | 1 | 274 | 0.73 | <0.05 | 2.5 | 0.55 | 0.15 | 0.8 | 96 |
| B459213 | | 40.9 | <0.002 | 0.01 | 0.42 | 10.5 | 2 | 0.8 | 248 | 0.34 | <0.05 | 3 | 0.235 | 0.32 | 0.9 | 86 |
| B459215 | | 23.3 | <0.002 | <0.01 | 0.25 | 10.1 | <1 | 0.9 | 293 | 0.75 | <0.05 | 2.6 | 0.511 | 0.14 | 0.8 | 83 |
| B459216 | | 18.7 | <0.002 | <0.01 | 0.19 | 9.9 | <1 | 0.8 | 232 | 0.69 | <0.05 | 2.2 | 0.496 | 0.11 | 0.8 | 82 |
| B459218 | | 43.9 | <0.002 | <0.01 | 0.92 | 30.9 | <1 | 0.6 | 827 | 0.13 | <0.05 | 1 | 0.375 | 0.17 | 0.2 | 261 |
| B459219 | | 80.7 | <0.002 | <0.01 | 0.4 | 34.2 | <1 | 0.6 | 870 | 0.14 | <0.05 | 1.1 | 0.375 | 0.14 | 0.7 | 254 |
| B459220 | | 51.8 | <0.002 | <0.01 | 0.26 | 5.8 | <1 | 0.5 | 641 | 0.22 | <0.05 | 2.3 | 0.19 | 0.19 | 1 | 77 |
| B459221 | | 51.3 | <0.002 | <0.01 | 0.39 | 17.1 | <1 | 0.5 | 789 | 0.18 | <0.05 | 1.5 | 0.267 | 0.18 | 0.9 | 173 |



ALS Chemex

EXCELLENCE IN ANALYTICAL CHEMISTRY

ALS Canada Ltd.

212 Brooksbank Avenue

North Vancouver BC V7J 2C1

Phone: 604 984 0221 Fax: 604 984 0218 www.alschemex.com

To: PERFORMANCE MINERALS OF CANADA LTD.

PO BOX 69

SECHELT BC V0N 3A0

Page: 2 - D

Total # Pages: 2 (A - D)

Plus Appendix Pages

Finalized Date: 11-FEB-2008

Account: BPE

Project: WHITE CHANNEL

CERTIFICATE OF ANALYSIS VA08000738

| Sample Description | Method | ME-MS61 | ME-MS61 | ME-MS61 | ME-MS61 | AU-ST44 |
|--------------------|---------|---------|---------|---------|---------|---------|
| | Analyte | W | Y | Zn | Zr | Au |
| Units | | ppm | ppm | ppm | ppm | ppm |
| LOR | | 0.1 | 0.1 | 2 | 0.5 | 0.0001 |
| B459211 | | 0.5 | 12.6 | 80 | 70.8 | 0.0011 |
| B459213 | | 0.5 | 9.8 | 54 | 32.3 | 0.0023 |
| B459215 | | 0.5 | 11.8 | 66 | 55.7 | 0.0013 |
| B459216 | | 0.5 | 10.8 | 59 | 57.4 | 0.0013 |
| B459218 | | 0.4 | 14.2 | 186 | 37.5 | 0.0021 |
| B459219 | | 0.8 | 14.6 | 75 | 40 | 0.0022 |
| B459220 | | 0.2 | 10.8 | 42 | 67.9 | 0.0005 |
| B459221 | | 0.4 | 12.3 | 123 | 61.5 | 0.0010 |



ALS Chemex

EXCELLENCE IN ANALYTICAL CHEMISTRY

ALS Canada Ltd.

212 Brooksbank Avenue
North Vancouver BC V7J 2C1

Phone: 604 984 0221 Fax: 604 984 0218 www.alschemex.com

To: PERFORMANCE MINERALS OF CANADA LTD.
PO BOX 69
SECHLT BC V0N 3A0

Page: Appendix 1
Total # Appendix Pages: 1
Finalized Date: 11-FEB-2008
Account: BPE

Project: WHITE CHANNEL

CERTIFICATE OF ANALYSIS VA08000738

| Method | CERTIFICATE COMMENTS |
|---------------|--|
| ME-MS61 | REE's may not be totally soluble in this method. |

AA

WHOLE ROCK ICP-MS ANALYSIS

AA

Performance Minerals of Canada PROJECT MINERAL RIDGE File # 95-2846

P.O. Box 69, Sechart BC V0N 3A0 Submitted by: Rudy C. Riepe

| SAMPLE# | Y ppm | La ppm | Ce ppm | Pr ppm | Nd ppm | Sm ppm | Eu ppm | Gd ppm | Tb ppm | Dy ppm | Ho ppm | Er ppm | Tm ppm | Yb ppm | Lu ppm | H.M. gm | SAMPLE gm |
|---------|----------|-----------|-----------|-----------|-----------|-----------|-----------|-----------|-----------|-----------|-----------|-----------|-----------|-----------|-----------|------------|--------------|
| E 66764 | 16.0 | 19.8 | 40.2 | 4.0 | 13.3 | 2.3 | .6 | 1.8 | .8 | 2.2 | .6 | <.5 | .3 | 1.7 | .2 | 23.0 | 134 |

.200 GRAM SAMPLE FUSED WITH 1.2 GM LiBO2 AND IS DISSOLVED AND DILUTED TO 100 ML WITH 5% HNO3. RARE EARTH ELEMENTS PRE-CONCENTRATED AND SEPARATED FROM MAJOR ELEMENTS, ANALYSED BY ICP -
- SAMPLE TYPE: GRAVEL

DATE RECEIVED: AUG 11 1995

DATE REPORT MAILED:

Aug 30/95

SIGNED BY.....

C. Long

D. TOYE, C. LEONG, J. WANG; CERTIFIED B.C. ASSAYERS

Enclosure 3

E 66764
Performance Minerals of Canada
ACME 95-2846
GRAVEL
Aug 11 1995 MINERAL RI
*GEO BEG END
(1)

AA
LL

WHOLE ROCK ICP-MS ANALYSIS

AA
LL

Performance Minerals of Canada PROJECT MINERAL RIDGE File # 95-2846

P.O. Box 69, Sechart BC V0N 3A0 Submitted by: Rudy C. Riepe

| SAMPLE# | Y ppm | La ppm | Ce ppm | Pr ppm | Nd ppm | Sm ppm | Eu ppm | Gd ppm | Tb ppm | Dy ppm | Ho ppm | Er ppm | Tm ppm | Yb ppm | Lu ppm | H.M. gm | SAMPLE gm |
|---------|----------|-----------|-----------|-----------|-----------|-----------|-----------|-----------|-----------|-----------|-----------|-----------|-----------|-----------|-----------|------------|--------------|
| E 66764 | 16.0 | 19.8 | 40.2 | 4.0 | 13.3 | 2.3 | .6 | 1.8 | .8 | 2.2 | .6 | <.5 | .3 | 1.7 | .2 | 23.0 | 134 |

.200 GRAM SAMPLE FUSED WITH 1.2 GM LiBO₂ AND IS DISSOLVED AND DILUTED TO 100 ML WITH 5% HNO₃. RARE EARTH ELEMENTS PRE-CONCENTRATED AND SEPARATED FROM MAJOR ELEMENTS, ANALYSED BY ICP -
- SAMPLE TYPE: GRAVEL

DATE RECEIVED: AUG 11 1995

DATE REPORT MAILED:

Aug 30/95

SIGNED BY.....

C. Riepe

D. TOYE, C. LEONG, J. WANG; CERTIFIED B.C. ASSAYERS

E 66764
Performance Minerals of Canada
ACME 95-2846
GRAVEL *GEO BEG END
AUG 11 1995 MINERAL RI (1)



Before

210

After





After

216

Before





Before

2/17

After





215



After

216

4



After

211

Before

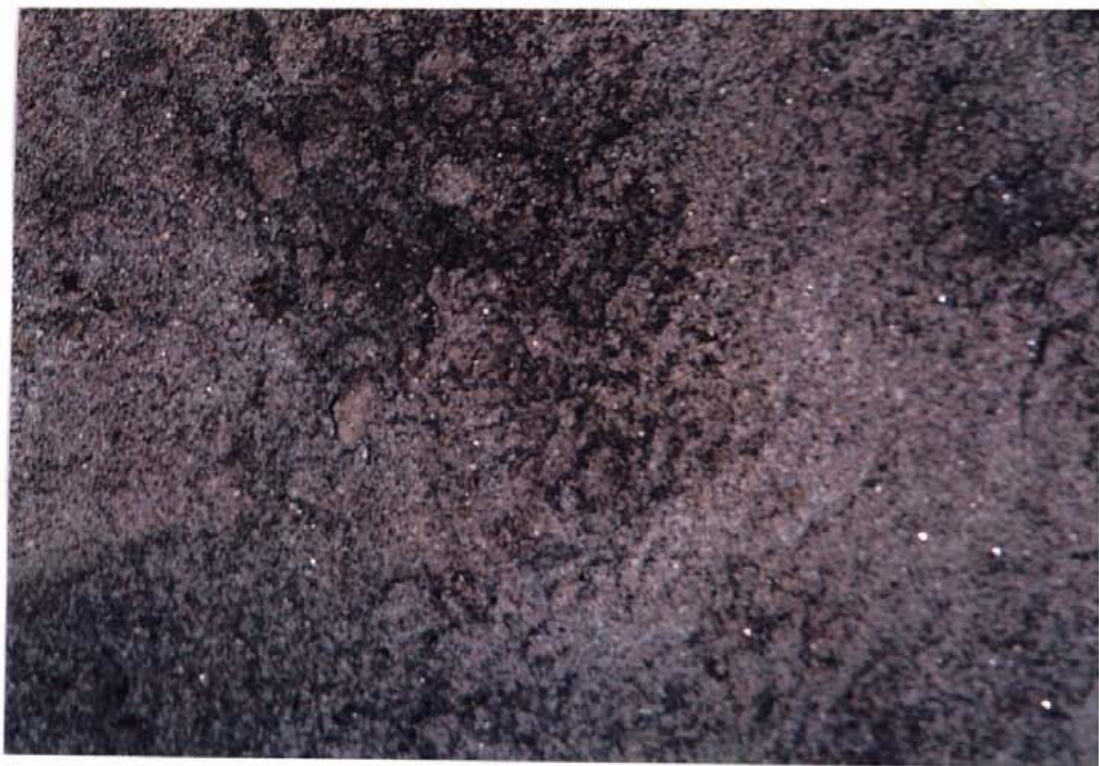




208 Sample pits



206



Mica
close up

Pit



707

7



215
Sample pit



221
South
Quartz pebbles
Road showing
209





Storage Bldg.

*North
Road to Highway*

