

BIG LEDGE PROPERTY CLAIMS PART A
Slocan Mining Division, BC

RECEIVED
JAN 16 2008
Gold Commissioner's Office
VANCOUVER, B.C.

2007 EXPLORATION REPORT

Mineral Claims

546038
546040

NTS Sheets

82L/08

(approximate centre of claims: 50° 27' N / 118° 6' W)

Work completed between September 12 and September 15, 2007

Work completed by: Barry Hanslit
(Owner/Operator)
Zinex Mining Corp.
Nanaimo, BC

Report Prepared by:
Janet Miller
Barry Hanslit

29954

Summary

Barry Hanslit acquired claims 546038 and 546040 (2034 acres/823 ha) comprising the Big Ledge "A" claims in the fall of 2006. He continues to be the owner/operator on the claims. The Big Ledge "A" claims are located within a portion of National Topographic System (NTS) 1:50,000-scale map sheet 82L/08 in the Slocan Mining District of British Columbia, approximately 60 km south of Revelstoke and 31 km northwest of Nakusp.

Exploration has been performed within the area since 1892 primarily on the neighboring Big Ledge. During this time numerous geological, geochemical and geophysical surveys were conducted and this exploration has resulted in four adits, trenching and over 10,000 m of drilling. The most recent work on the property was conducted by Teck Corp. between 1991 and 1993, including widely spaced soil and magnetometer surveys, trenching and diamond drilling. Regional mapping by the GSC reveals the Big Ledge to be primarily underlain by rocks of the Thor-Odin gneiss dome of the Proterozoic Monashee Complex and metamorphic rocks of the Proterozoic to Paleozoic Kootenay Assemblage. These rocks are schist and gneiss, calcareous quartzite, calc-silicate gneiss, marble and amphibolite. On the property, rocks are folded into a series of east-west trending, open to tight folds, inclined to the south, overturned to the north and plunging variably to the east and west. The Big Ledge horizon is 30m of a mineralized quartzite unit in the core of a fold which is likely a tight antiform, inclined to the south and overturned to the north.

Between September 12 and 15, 2007, reconnaissance prospecting work was conducted on the Big Ledge "A" claims. No showings with significant mineralization were found. Despite the poor results from the current exploration program, the area that comprises the Big Ledge is a highly prospective development. Further exploration after a compilation of existing data and modeling is recommended to find areas worthy of detailed prospecting in the future.

Table of Contents

<i>Summary</i>	ii
<i>Table of Contents</i>	iii
<i>List of Figures</i>	iv
<i>List of Appendices</i>	iv
1.0 INTRODUCTION	1
2.0 DESCRIPTION OF LANDHOLDINGS	4
2.1 Location and Mineral Claims	4
2.2 Access	4
2.3 Physiography, Flora and Fauna	4
2.4 Property History	4
3.0 GEOLOGY	5
3.1 Regional Geology	5
3.2 Property Geology	7
3.3 Deposit Mineralogy	7
4.0 2007 EXPLORATION PROGRAM	9
4.1 Prospecting	9
4.0 CONCLUSIONS AND RECOMMENDATIONS	9
REFERENCES CITED	15

List of Figures

		page
Figure 1	Big Ledge "A" Claims Location Map	2
Figure 2	Big Ledge "A" Claims and Physiography	3
Figure 3	Big Ledge "A" Regional Geology	6
Figure 4	Big Ledge "A" Property Geology	8
Figure 5a	Big Ledge "A" Claims Traverse	10
Figure 5b	Big Ledge "A" Claims Traverse	11
Figure 5c	Big Ledge "A" Claims Traverse	12
Figure 5d	Big Ledge "A" Claims Traverse	13
Figure 5e	Big Ledge "A" Claims Traverse	14

List of Appendices

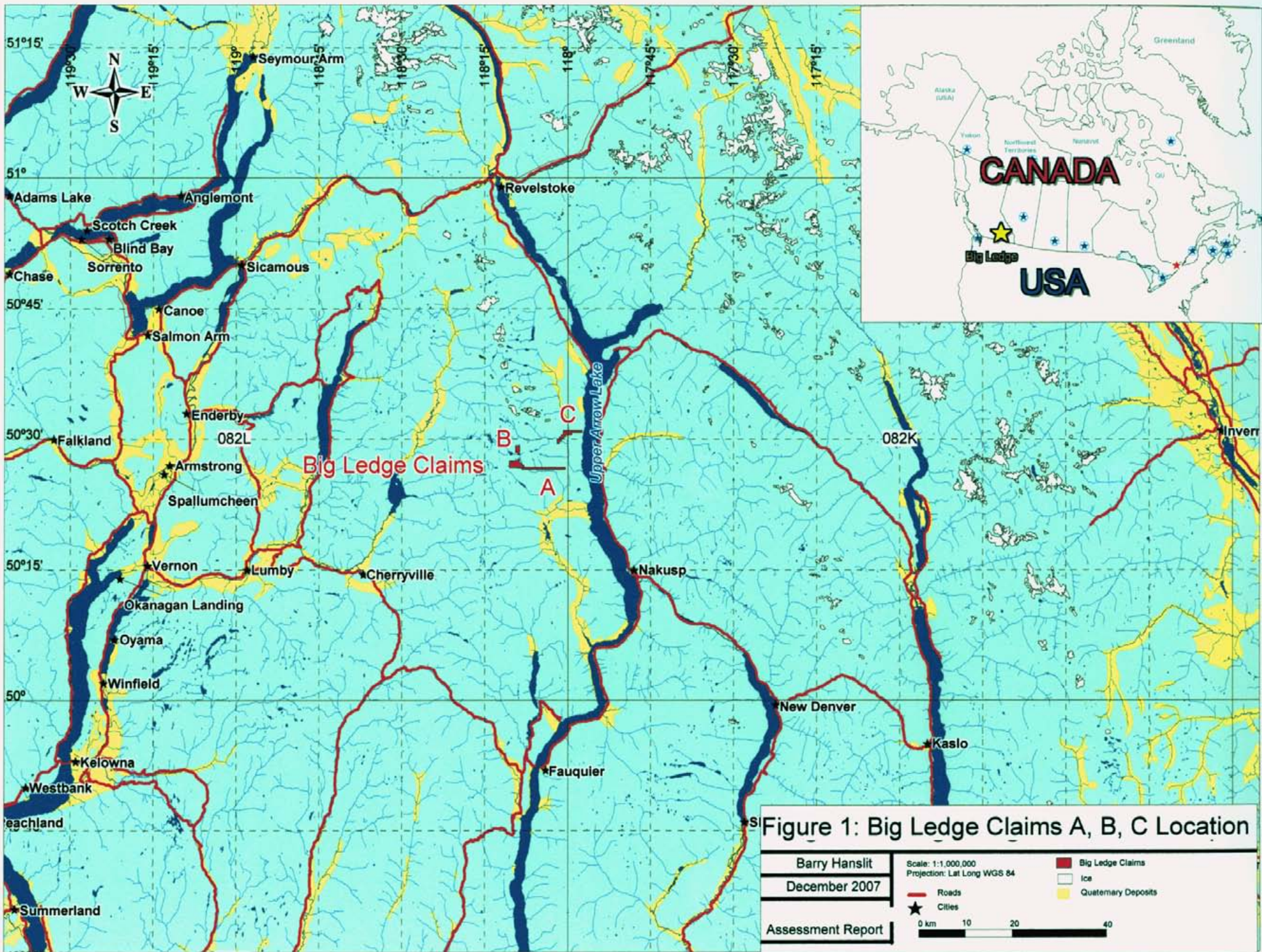
Appendix I	Mineral Claims and Expenditure Schedule
Appendix II	Statement of Qualifications

1.0 INTRODUCTION

Barry Hanslit acquired claims 546038 and 546040 (823 ha) comprising the Big Ledge "A" claims in the fall of 2006. He continues to be the owner/operator on the claim known as the Big Ledge "A" claims which is located in a portion of National Topographic System (NTS) 1:50,000-scale map sheet 82L/08 in the Slocan Mining District of British Columbia, approximately 60 km south of Revelstoke and 31 km northwest of Nakusp (Figure 1 and 2).

Exploration has been performed within the area since 1892 mainly on the neighboring Big Ledge Deposit. During this time numerous geological, geochemical and geophysical surveys were conducted resulting in four adits, trenching and over 10,000 m of drilling. The most recent work on the property was conducted by Teck Corp. between 1991 and 1993, including widely spaced soil and magnetometer surveys, trenching and diamond drilling. Regional mapping by the GSC reveals the Big Ledge to be primarily underlain by rocks of the Thor-Odin gneiss dome of the Proterozoic Monashee Complex and metamorphic rocks of the Proterozoic to Paleozoic Kootenay Assemblage. These rocks are schist and gneiss, calcareous quartzite, calc-silicate gneiss, marble and amphibolite. On the property, rocks are folded into a series of east-west trending, open to tight folds, inclined to the south, overturned to the north and plunging variably to the east and west. The Big Ledge horizon is 30m of a mineralized quartzite unit in the core of a fold which is likely a tight antiform, inclined to the south and overturned to the north (Figure 3).

In early fall of 2007, prospecting was conducted on the Big Ledge "A" claims by Barry Hanslit. This report documents that work, and also provides a description of claims, location, access, physiography and other relevant information. A discussion of the deposit mineralogy follows a description of regional and property scale geology.



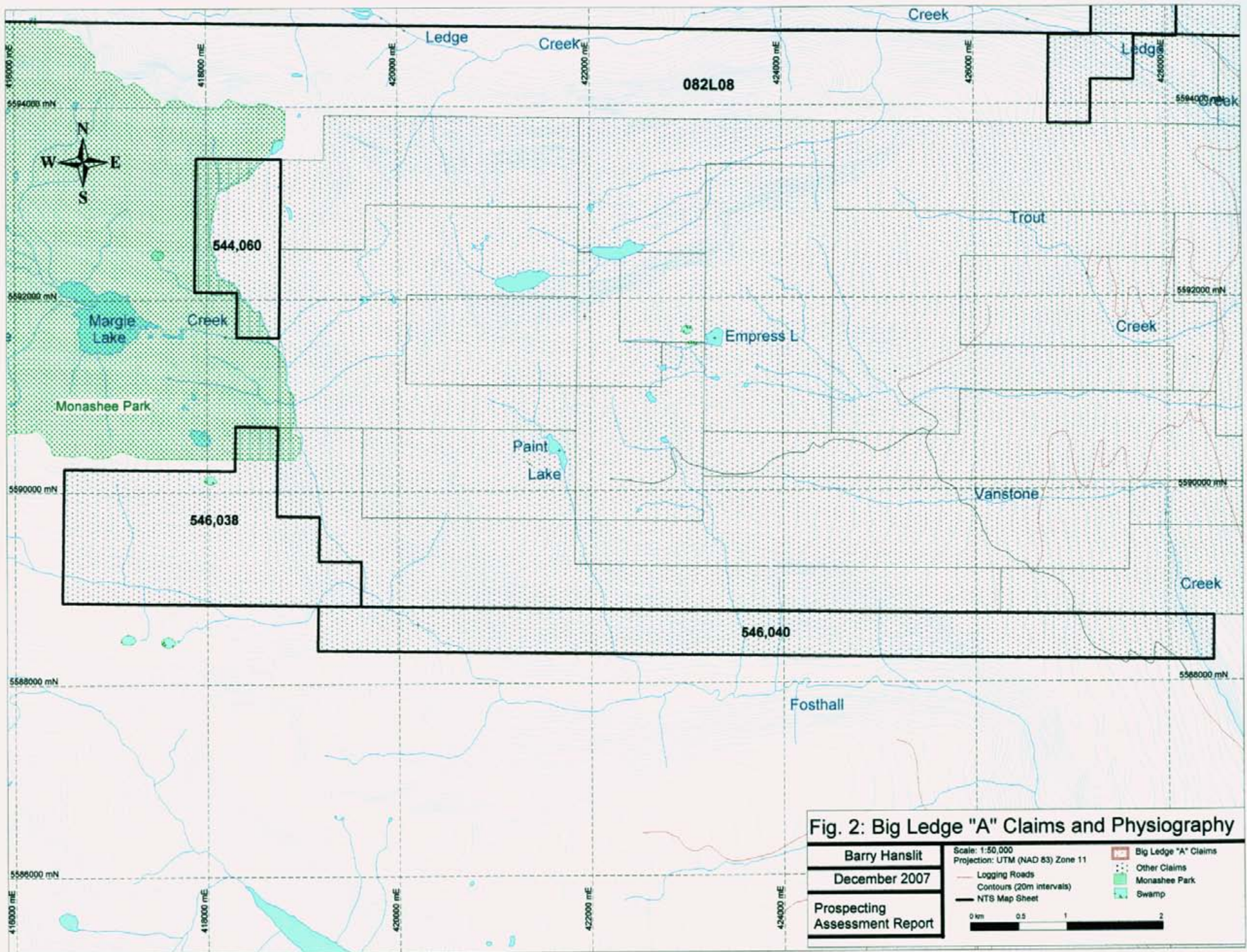


Fig. 2: Big Ledge "A" Claims and Physiography

2.0 DESCRIPTION OF LANDHOLDINGS

2.1 Location and Mineral Claims

The Big Ledge "A" claims are 546038 and 546040 (823 hectares) and are located just south of Monashee Park in British Columbia and roughly bounded by Vanstone Creek in the east. The property is located 60 km south of Revelstoke and 31 km northwest of Nakusp within National Topographic System (NTS) 1:50,000-scale map sheet 82 L/08 (Figure 2). The mineral claims were staked by Barry Hanslit in the fall of 2006. Work on the property was conducted by Barry Hanslit. Additional claim information is provided in Appendix I.

2.2 Access

The Big Ledge "A" Claims are located approximately 60 kilometers south of Revelstoke and 31 km northwest of Nakusp. The property can be accessed by logging roads in the summer months south of Revelstoke on Highway 23 to the Shelter Bay logging roads, then traveling 18km south to the Limekiln spur road, and finally an additional 3.1km to Odin road.

2.3 Physiography, Flora and Fauna

The property lies in a roughly elongate rectangle stretching from the southern edge of Monashee Park to Vanstone Creek in the east. The property slopes into Fosthall Creek with peak elevations of 7,000 ft in the northwest corner of claim 546038 near Monashee Park and lowest elevations of 4,400 ft where Fosthall Creek flows out of claim 546040. The property is vegetated in a mixture of fir and cedar with open underbrush at lower elevations, and sub-alpine spruce forests at higher elevations (Evans, 1993). Outcrop is rare to the east of the property and more abundant (averaging 80%) in the west. Ungulates such as elk, moose and deer winter along Upper Arrow Lake. Black and grizzly bears can be seen in this area and trout occupy some of the lakes and rivers.

2.4 Property History

The area around the Big Ledge has been the focus of exploration since 1892, when the deposit was originally staked as a gossan. By 1925, 210 metres of underground work in 4 adits had been completed on the Bonanza, Sunshine, Skyline and Adventurer claims. In 1927, 16 holes were drilled on the property (BCGS, 2007). Consolidated Mining and Smelting Company of Canada Ltd. (Cominco) combined a large portion of the deposit in 1947 and by 1953 they drilled 6,100 metres on the property. In 1960, the ground was re-staked as the BL group. From 1964 to 1966, approximately 3,960 metres of drilling, geological mapping and geochemical and magnetometer surveys were carried out.

Since that time numerous other companies have explored within the area around the Big Ledge. In 1977, Metallgesellschaft and Cyprus Anvil Mining Corp. mapped the geology. Esperanza Explorations completed geotechnical,

geophysical and geochemical surveys between 1980 and 1981. Geochemical and geological surveys were carried out in the vicinity of the Big Ledge by Noranda in 1988 and 1989. Between 1991 and 1993, Teck Corp. mapped the property, conducted widely spaced soil and magnetometer surveys, trenched and performed diamond drilling (Evans, 1993).

3.0 GEOLOGY

3.1 *Regional Geology*

This area has been mapped in 1977, 1979 and 1985 by the GSC and is primarily underlain by rocks of the Thor-Odin gneiss dome of the Proterozoic Monashee Complex and metamorphic rocks of the Proterozoic to Paleozoic Kootenay Assemblage. The Thor-Odin is one of a series of gneiss domes spaced approximately 80 kilometres apart on the eastern edge of the Shuswap Complex. The Shuswap metamorphic rocks are part of the Proterozoic-Mesozoic amphibolite grade complex intruded by Eocene granodiorites and pegmatites (Evans, 1993; BCGS, 2007).

A central core zone in the Thor-Odin dome consists of gneissic and migmatitic rocks. This zone is surrounded by a heterogeneous assemblage of metasedimentary rocks of the Mantling zone and Fringe zone, the latter containing abundant pegmatite and lineated quartz monzonite. The Supracrustal zone, consisting of quartzite, marble, phyllite, schist and metavolcanic rocks, forms a cover to the gneisses (BCGS, 2007).

The Big Ledge deposit is located south of the Core zone in an east-west trending succession of metasedimentary rocks of the Mantling zone. The rusty weathering succession consists of a heterogeneous mixture of schist and gneiss, calcareous quartzite, calcsilicate gneiss, marble and amphibolite. The structure is dominated by a series of east-west trending, open to tight folds. These are inclined to the south, overturned to the north and plunge variably to the east and west. The mineralized horizon is within the core of a tight antiform, inclined to the south and overturned to the north. (BCGS, 2007)

LEGEND



- UPPER CRUSTAL ZONE**
- MIDDLE JURASSIC NELSON INTRUSIVE SUITE:** predominantly granodiorite
 - PALEOZOIC - LOWER JURASSIC STRATIFIED ROCKS:**
- MIDDLE CRUSTAL ZONE**
- LATE PALEOCENE - EARLY EOCENE LADYBIRD GRANITE SUITE:** biotite granite, quartz monzonite, leucocratic pegmatite (also includes areas with pegmatite with <50% metamorphic rocks)
 - LATE CRETACEOUS WHATSHAN BATHOLITH** (includes Cariboo Creek stock): hornblende biotite bearing K-feldspar megacrystic quartz monzonite, mafic hornblende biotite diorite
 - LATE PROTEROZOIC - MESOZOIC AMPHIBOLITE FACIES METAMORPHIC ROCKS:** FA = Fern Lake assemblage; GA = Gold Range assemblage
- BASEMENT ZONE**
- PROTEROZOIC CRYSTALLINE BASEMENT AND LATE PROTEROZOIC - (?) CAMBRIAN COVER GNEISSES**
- FAULTS AND SHEAR ZONES**
- GEOLOGIC CONTACT; MAPPED, COMPILED FROM PUBLISHED MAPS, ASSUMED**
 - LOW - MODERATE ANGLE EOCENE NORMAL FAULT (PEGS ON HANGING WALL)**
 - STEEP EOCENE NORMAL FAULT (PEGS ON HANGING WALL)**
 - STEEP EOCENE NORMAL FAULT; SENSE OF DISPLACEMENT UNCERTAIN**
 - LITHOPROBE LINE**
- FAULT ABBREVIATIONS**
- BF BEAVEN FAULT
 - CF CHERRYVILLE FAULT
 - CRF COLUMBIA RIVER FAULT
 - GCSZ GWILLIM CREEK SHEAR ZONES
 - MD MONASHEE DECOLLEMENT
 - OF OKANAGAN VALLEY - EAGLE RIVER FAULT SYSTEM
 - SLFZ SIOCAN LAKE FAULT ZONE
 - SSZ SLATE MOUNTAIN SHEAR ZONE
 - VSZ VALKYR SHEAR ZONE

From Carr, 1989

Figure 3: Regional Geology Big Ledge Claims

Barry Hanslit	Scale: 1:1,000,000 Projection: Lat Long (WGS 84)	Big Ledge Claims
December 2007		
Prospecting Assessment Report		

3.2 Property Geology

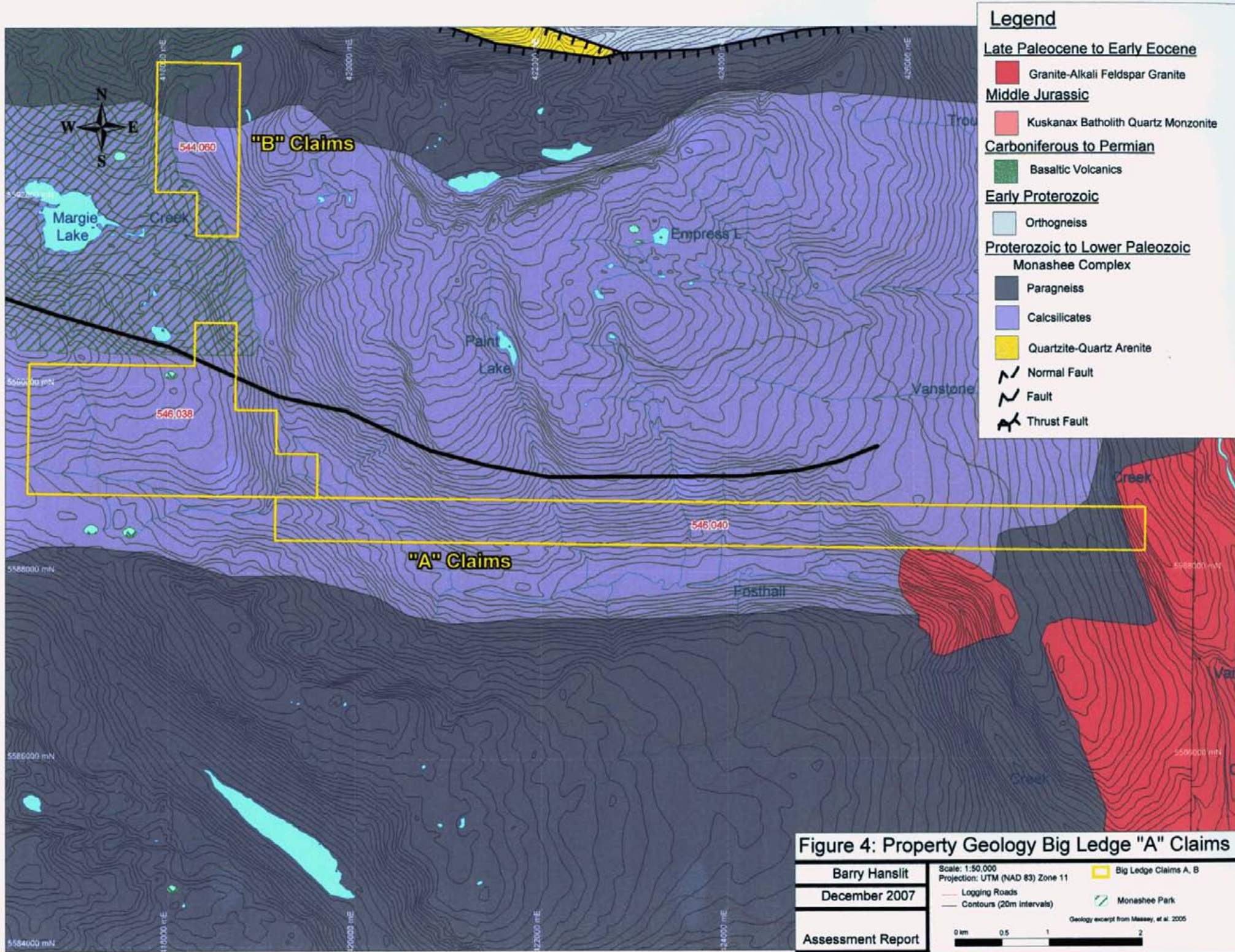
The property geology shown in Figure 4, based on the data from BCGS online geology map, shows that the majority of the property is underlain by Proterozoic to Lower Paleozoic Monashee Complex comprised of calc-silicates and paragneiss. All of claim 546038 and the western majority of 546040 are underlain by Proterozoic to Lower Paleozoic Monashee Complex calc-silicates. A fault runs roughly northwest-southeast through the peak of claim 546038. The far eastern portion of claim 546040 is underlain by Monashee paragneiss and the eastern-most margin of claim 546040, roughly separated by Vanstone Creek, is underlain by Late Paleocene to Early Eocene granite and alkali-feldspar granite.

3.3 Deposit Mineralogy

The neighboring Big Ledge showing contains showings of pyrrhotite, pyrite, sphalerite, galena, chalcopyrite and marcasite occurring along a layer known as the Ledge for a distance of over 10 kilometres. Indicated ore reserves are 6.5 million tonnes grading less than 6 per cent combined lead and zinc (CIM Bulletin Vol. 75, No. 840, page 119).

The Big Ledge is hosted in a quartzite package consisting of fine grained, dark graphitic-sericitic schist, dark quartz-rich schist, calc-silicate gneiss and minor siliceous marble layers. Pyrite and pyrrhotite are disseminated throughout these units resulting in a characteristic rusty weathering. Drilling indicates that there are at least four massive sulphide layers within the Big Ledge. It is not known if these are individual layers or fold repetitions of one or more layers. The massive sulphide layers consist of medium- to coarse-grained pyrrhotite or pyrite with varying amounts of dark sphalerite. This massive sulphide layer can be 5 to 75% of the sequence (Evans, 1993). Quartz-eyes are common in the massive sulphide layers and sphalerite is typically aligned parallel to layering in the adjacent schists (BCGS, 2007).

The Big Ledge averages 30 metres in thickness and is conformable to bedding. Pyrrhotite is the most abundant sulphide and pyrite, usually in nodular masses, is locally abundant. Sphalerite is erratically distributed with the pyrrhotite. Galena is occasionally present in minor amounts along with the other sulphides, but the only notable concentrations are small occurrences in calcareous beds adjacent to the main mineralized sections. In general, the sulphides are coarse-grained and a small amount of the ore minerals are intergrown with pyrrhotite. Iron sulphides are usually accompanied by scattered graphite flakes.



A zone of heavier mineralization occurs in the upper portion of the rock series. This zone ranges from 0.61 to 6 metres in thickness and is conformable with bedding, but the sulphides are erratically distributed in irregular massive and disseminated bodies. There is a large amount of granitic and pegmatitic material in this zone. Sphalerite appears to be most abundant in disseminated sulphide sections, but small irregular high-grade patches occur with both the massive and disseminated sulphides (BCGS, 2007).

While the thickness of this horizon is unusually large in many respects it could be considered a typical Shuswap style Zn-Pb-Ag system. Alteration is essentially absent supporting a possible syngenetic origin for this system such as in a sedimentary exhalative Zn-Pb system.

4.0 2007 EXPLORATION PROGRAM

4.1 *Prospecting*

Three days were spent on foot prospecting the Big Ledge "A" claims. The terrain, as typical for this area, was challenging to traverse. Prospecting was focused on finding new occurrences of lead-zinc Big Ledge-type mineralization. Maps of the traverse can be seen in Figure 5a-e. No significant sources of mineralization were found. Costs associated with the program are listed in Appendix I.

4.0 CONCLUSIONS AND RECOMMENDATIONS

Results from the prospecting program in 2007 revealed no new occurrences of mineralization on the Big Ledge "A" claims. Due to the limited nature of the exploration these claims remain underexplored and warrant future work. Compilation of existing data in the area into a comprehensive set would allow for more efficient exploration in the future.

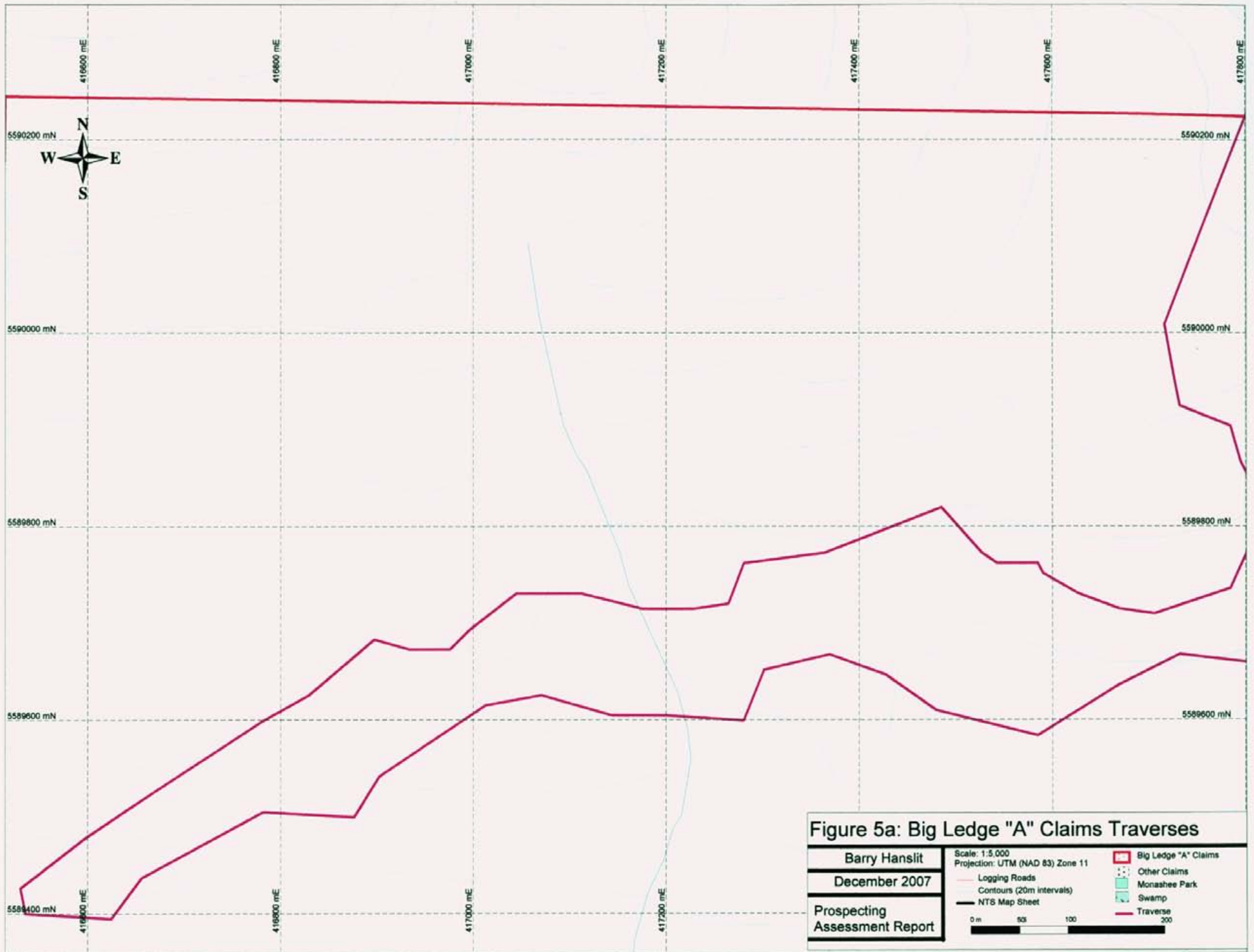


Figure 5a: Big Ledge "A" Claims Traverses

Barry Hanslit	Scale: 1:5,000	Big Ledge "A" Claims
December 2007	Projection: UTM (NAD 83) Zone 11	Other Claims
Prospecting Assessment Report	Logging Roads	Monashee Park
	Contours (20m intervals)	Swamp
	NTS Map Sheet	Traverse
	0 m 50 100 200	





Figure 5c: Big Ledge "A" Claims Traverses

Barry Hanslit
 December 2007
 Prospecting Assessment Report


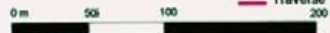
Scale: 1:5,000
 Projection: UTM (NAD 83) Zone 11

Big Ledge "A" Claims
 Other Claims
 Monashee Park
 Swamp
 Logging Roads
 Contours (20m intervals)
 NTS Map Sheet
 Traverse

0 m 50 100 200



Figure 5e: Big Ledge "A" Claims Traverses

Barry Hanslit	Scale: 1:5,000	
December 2007	Projection: UTM (NAD 83) Zone 11	
Prospecting Assessment Report	Logging Roads	
	Contours (20m intervals)	
NTS Map Sheet		



REFERENCES CITED

- Massey, N.W.D., MacIntyre, D.G., Desjardins, P.J. and R.T. Cooney. 2005.
Digital Geology Map of British Columbia: Tile NM11 Southeast B.C., B.C.
Ministry of Energy and Mines, Geofile 2005-4
- Carr, S. Implications of Ladybird granite in the Thor-Odin-Pinnacles area, pp.79,
GSC 89-1E, Current Research.
- Evans, G., 1993. Diamond Drill Program Assessment Report on the Arrow
Property, Prepared for Teck Corp. BC Assessment Report number
23120.
- BCGS, 2007. MINFILE Number 082LSE012, BIG LEDGE, MONARCH,
ADVENTURER (L.1067), BL, SUNSHINE (L.2477), SKYLINE, Developed
Prospect. BC Geological Survey, website:
<http://minfile.gov.bc.ca/Summary.aspx?minfilno=082LSE012>

Appendix I

Mineral Claims and Expenditure Schedule Expenditure Allocations (1 page)

All exploration costs have been evenly allocated across the claims on a per hectare basis as the work was designed to be a preliminary reconnaissance of the property for future more intensive exploration. This work is sufficient to hold the claims at their current status until the dates shown below.

Total Prospecting Costs: \$2,700.00

Claim Number	NTS Map Sheet	Date of Staking	Current expiry date	Size (acres)	Area (ha)	2007 Exploration Costs	New Expiry Date	PAC Debit Used	Excess Credit
546038	082L	28-Nov-06	17-Sep-07	966.04119	390.943	\$1,282.39	17-Sep-08	0	\$26.24
546040	082L	28-Nov-06	17-Sep-07	1067.898	432.163	\$1,417.61	17-Sep-08	0	\$29.02
Total				2033.9392	823.106	\$2,700.00			\$55.26

Big Ledge "A" Claims 2007 Prospecting Cost Schedule

Personnel Costs

Activity	Person	Day Rate	Days	Total
Field Preparation				
	Barry Hanslit	\$400.00	1	\$400.00
In the Field				
	Barry Hanslit	\$400.00	3	\$1,200.00
Report Preparation				
	Barry Hanslit	\$400.00	0.5	\$200.00
	Janet Miller	\$400.00	1	\$400.00
Subtotal Personnel Costs				\$2,200.00

Equipment Costs

Item	Day Rate	Days	Total
Truck and Trailer rental	\$50.00	5	\$250.00
ATV Rental	\$50.00	5	\$250.00
Subtotal Equipment Costs			\$500.00

Grand Total \$2,700.00

Appendix II
Certificate of Authors

CERTIFICATE OF AUTHORS

I, Janet L. P. Miller, of Nanaimo, British Columbia, Canada do hereby certify that:

1. I was an employee of Strongbow Exploration Inc. formerly Navigator Exploration Corp., 800-625 Howe St., Vancouver, British Columbia, Canada from 2000 to 2005.
2. I graduated from the University of British Columbia (2004) with a BSc in Honours Geology with a minor in Biology.
3. I have been employed continuously in geology during the summer terms of my education with a focus in diamond exploration.
4. I have been active in the field aspects of diamond and base metal exploration for four years (2002-2005) in the Northwest Territories and Nunavut, including project management, planning and implementation, as well as detailed mapping of surficial deposits, sampling, prospecting, and ground truthing geophysical anomalies on various properties.
5. I have been involved in data compilation, and analysis for diamond and base/precious metal exploration since 2000 under the supervision of a registered professional geologist, and have been involved in a number of aspects of projects in the Northwest Territories, British Columbia, and Nunavut.



Janet L.P. Miller

Nanaimo, BC, Canada
January 10, 2008

I, Barry Hanslit, of 3380 Hammond Bay Rd. Nanaimo, British Columbia do hereby declare the following:

1. I have completed a "Prospecting Course" in 1991 given by a representative of Manitoba Natural Resources at Falcon Lake, Manitoba.
2. I have been prospecting for the last 12 years in both Manitoba, and more recently British Columbia.
3. I have worked on several prospects and developed prospects in Manitoba during the years 1990 to 1994
4. Held the position of Project Operations Manager with Stornoway Diamonds from 2004 to 2005.
5. Currently president of Zinex Mining Corp.



Barry A. Hanslit

Nanaimo, BC, Canada
January 10, 2008