

PROSPECTING REPORT

**RECEIVED**  
JUN 17 2008  
Gold Commissioner's Office  
VANCOUVER, B.C.

For the

Standard 1 Property

**RECEIVED**  
GOVERNMENT AGENT  
SALMON ARM  
JUN 13 2008  
NOT AN OFFICIAL RECEIPT  
TRANS # .....

Tenure Number  
554772

**BC Geological Survey  
Assessment Report  
30016**

Revelstoke Mining Division, B.C.  
BCGS GRID 82M.067  
(51°22'31N - 118°14'62W)

for

David Manley Fredlund  
1801 3<sup>rd</sup> Ave S.E. Salmon Arm  
(250) 804-0781

by

David Manley Fredlund  
1801 3<sup>rd</sup> Ave S.E. Salmon Arm  
(250) 804-0781

June 2008

**GEOLOGICAL SURVEY BRANCH**  
ASSESSMENT REPORT

30016

# TABLE OF CONTENTS

	Page
SUMMARY .....	6
INTRODUCTION .....	6
Location .....	6
Access .....	6
History and previous work .....	6
PROPERTY .....	8
GEOLOGY .....	8
Regional .....	7
Property .....	8
Mineralization .....	8
CONCLUSIONS .....	8
APPENDICES:	
A. Statement of Expenditures .....	9
B. Writer's Certificate .....	10
C. Exploration and mineral images.....	11
D. Assays .....	12

## Figures

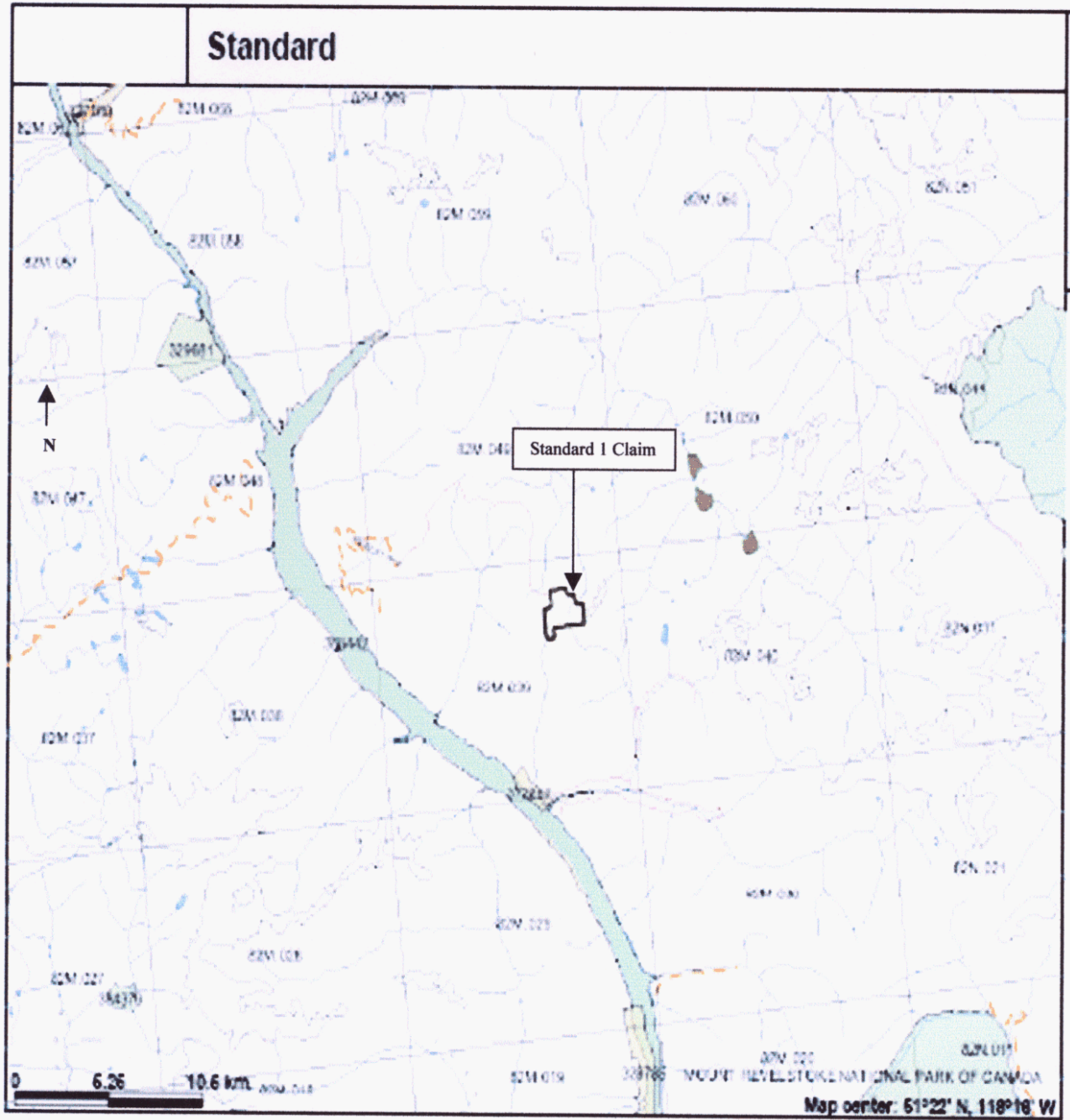
Figure:

1 Property Location Map .....	3
2 Regional Location Map .....	4
3 Claim Map mineralized trend.....	5
4 Regional Geological Setting .....	7

FIGURE 1 PROPERTY LOCATION

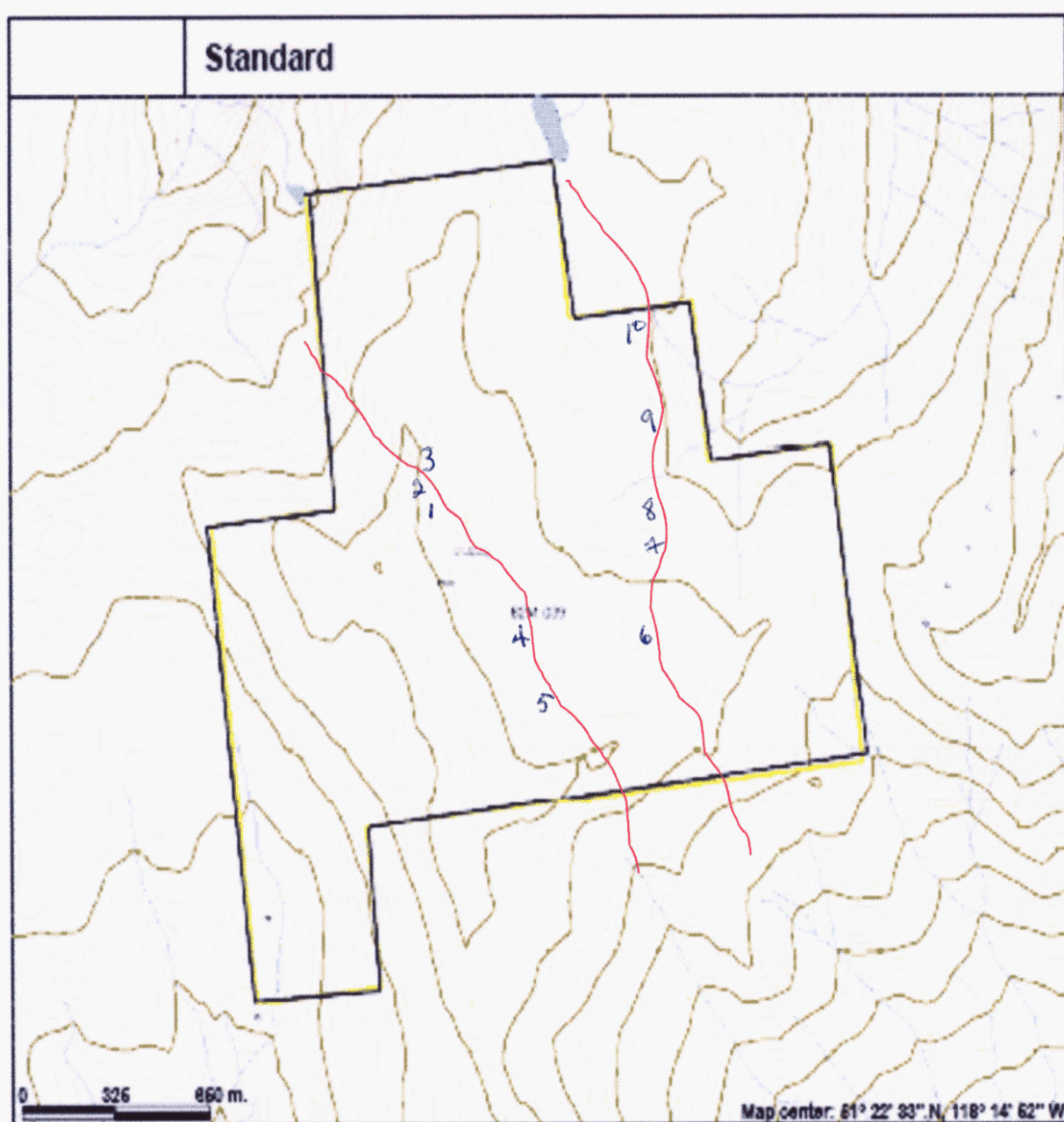


FIGURE 2 REGIONAL LOCATION



**Figure 3 Claim Map Showing Mineralized Trends  
And Sample Points 1,2,3 etc**

- 1
- 2
- 3
- 4 - S.E.H.W.
- 5 - Lake W
- 6
- 7
- 8 - South T
- 9 - Lower T
- 10 - Bottom



## **SUMMARY**

During the fall of 2007 (September 5, with a crew of 5 and September 10), prospectors Dan Kobi and myself made two trips onto the Standard 1 mineral property. Daylong prospecting grids and traverses by were undertaken on these occasions in order to determine the geology and mineral potential. Serpentine and soapstone were found along the contact zone between a mineralized copper carbonate horizon and the chlorite schist and dolomitic marble comprising the country rock. The mineralized carbonate trend was followed and mapped across the property. Due to the nature of the mapping and the mineral values of the carbonate horizon encountered on this property, further work is warranted as will be detailed in the body of this report.

## **INTRODUCTION**

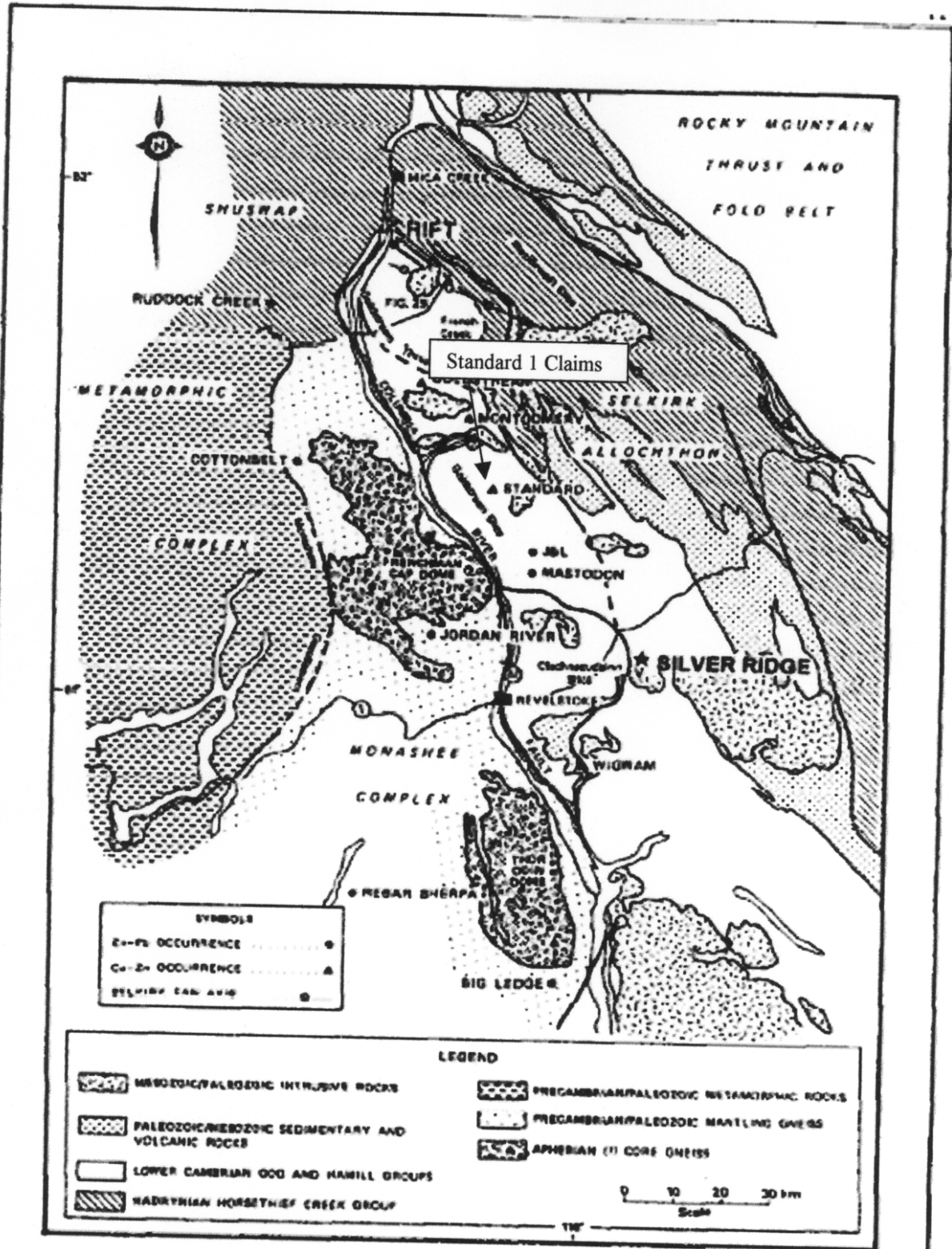
**Location:** The properties consisting of one tenure with a total of 16 cells, lies to the west of the Rocky Mountain Trench. It is within the Northern Selkirk Mountains and East of the Monashee mountain system. The mineral tenure is located approximately 50 km north of Revelstoke B C, south of Downie Creek and approximately 5 miles East of Lake Revelstoke.

The geographical coordinates for the center of the tenure are 51°22'31N - 118°14'62W. The terrain consists of gentle slopes, draining to the east with some steeper terrain on the extreme west and south sides of the property. The slopes begin just above tree line and extend to the top of Standard Mountain. The elevations vary from 2,100 m (6,600 feet) ASL along the eastern edge to 2,400 m (7,500 feet) ASL at the western boundary of the Standard 1 claim to give a relief of 300 m (900 feet). The main water sources are the easterly flowing snowfield drainages running through the property from the high terrain in the west as well as an occasional small lake. The ground cover is high alpine grass and sparse shrubs.

**Access:** Access is by way of a thirty-minute helicopter flight from Revelstoke or by way of the paved highway from Revelstoke to Mica Creek. This highway runs 5 miles to the west of the tenure and six thousand feet lower. There is currently no road access.

**History and previous work:** Original discovery work took place between 1896 and 1906 with some trenching and tunneling. Noranda, and Westair Mines have been active in this area during the 1970 and 80's. Work comprising soil grids and some diamond drilling have taken place on the property during that period however work to date did not define a commercial deposit at historical prices. Further, prospecting was hampered by the snow and ice fields that now have receded to expose new information

# GEOLOGY Regional:



After Gibson and Hoy, 1985.

Standard 1 Claim

Regional Geological Setting

Figure 4

## **GEOLOGY**

**Property:** On the Standard 1 claim the predominant geology is the north south trending dolomitic marble and chlorite schist. This body encompasses several horizons of mineralized carbonate that follow the bedding and dip at about 25 degrees east. Talc magnesite schists and pods of steatite and talc occur with serpentine along the western contact with the chlorite schist.

**Mineralization:** The mineralized carbonate beds vary from .5 to 3 meters at the surface and are traceable on the surface for over a thousand meters. They travel from the southern edge of the property toward the north diverging slightly as they move north. Surface grab sample assays from along the two mineralized trends showed copper to 5.94%, gold to 2.1 gm/ton with traceable amounts of platinum, palladium, lead and zinc (see enclosed assay reports).

## **Conclusion**

There is a zone of chlorite schist containing steatite, soapstone, magnesite and marble with multiple mineralized carbonate beds. This mineralization runs through the property as in two identifiable north south horizons. The mineralized trend is now exposed in several locations on the property where the altitude and the northeast exposure encouraged year round snow and ice.

During our exploration activities, the extent of the massive sulphide containing carbonate horizons was discovered to be larger than previously reported. On the south side of the property, the best assays came from newly exposed areas where climatic melt has exposed the carbonate horizon for probably the first time. At this location the carbonate trend sits almost vertical with a strike of 315 degrees. As it moves toward the north, the formation starts to dip toward the northeast while the strike remains fairly constant.

Because of the commercial potential a series of exploration trenches should be excavated laterally along the contact of the chlorite schist and carbonate trend. This could be accomplished with a heli-portable backhoe. Once results are obtained, drill locations could be determined to further define the potential.



**APPENDICES:**

**A. Statement of Expenditures**

**Field:**

two days of field work for two men.  
one day of field work for three men.

Foreman	M Fredlund	24 hrs at \$50.00 per hour = \$1,200.00
Prospector	D Kobe	24 hrs at \$30.00 per hour = \$720.00
Prospector	K Fredlund	12 hrs at \$30.00 per hour = \$360.00
Prospector	J Fredlund	12 hrs at \$30.00 per hour = \$360.00
Prospector	J Music	12 hrs at \$30.00 per hour = \$360.00
	Total	<u>\$3,000.00</u>

**Transportation:**

Access to the property was accomplished by helicopter from Revelstoke

2 round trips – One hour per round trip - 2hrs @ \$1,200/hr = \$2,400.00

Total expenses \$5,400.00

Total claimed for assessment work. \$2,800.00

## APPENDICES:

### B. Statement of Writer's Qualifications

I, David Manley Fredlund am holder of valid free miners license number 108862 which I have held since 1965 and hereby certify that:

1. I started my mining career at age four as the camp waterboy and cooks helper in a placer mining operation (my fathers).
2. I have been involved professionally in mineral exploration in different places for over forty two years including ;
  - Kootenays – gold, silver, lead, magnesite
  - Cariboo – gold
  - Revelstoke areas – silver, zinc, lead, dolomite, feldspar
  - Baker Lake N.W.T. – uranium, gold
  - Ominica – zinc
  - Stikine – gold, silver
  - Turnagain – gold, copper, jade
  - James Bay – diamonds
  - Pickle Lake – gold, platinum
3. I have worked with exploration crews for Boulder Creek Mines, Magnum Resources, Noranda, ESSO Resources, Texasgulf, Baker Mines, Powder Ridge Resources, Hammond Exploration and De Beers Canada Exploration (Monopros).
4. I am experienced in evaluating mineral prospects by geology, soil sampling, rock sampling and pan sampling.
5. I maintain an extensive library of geological books, reports and articles.
6. I am the author of this report, which is primarily based on my personal observations made while in the field.

Dated at Salmon Arm, B. C. this \_\_\_\_\_ day of \_\_\_\_\_



Overview of property from the southeast



Crew readying for the prospecting grid



Carbonate bed sample location "Lake W"



Close up of "Lake W" sample location



**ALS Chemex**  
**EXCELLENCE IN ANALYTICAL CHEMISTRY**  
 ALS Canada Ltd.  
 212 Brooksbank Avenue  
 North Vancouver BC V7J 2C1  
 Phone: 604 964 0221 Fax: 604 964 0218 www.alschemex.com

To: ASCENTION MINERAL CORP  
 1801 - 3RD AVE. S.E.  
 SALMON ARM BC V1E 1V1

Page: 1  
 Finalized Date: 18-JAN-2008  
 Account: ASCMIN

<b>CERTIFICATE VA07147727</b>
Project: P.O. No.: This report is for 10 Rock samples submitted to our lab in Vancouver, BC, Canada on 10-DEC-2007. The following have access to data associated with this certificate: MANLEY FREDLUND

SAMPLE PREPARATION	
ALS CODE	DESCRIPTION
WEI-21	Received Sample Weight
LOG-22	Sample login - Rod w/o BarCode
CRU-31	Fine crushing - 70% <2mm
SPL-21	Split sample - riffle splitter
PUL-31	Pulverize split to 85% <75 um

ANALYTICAL PROCEDURES		
ALS CODE	DESCRIPTION	INSTRUMENT
PGM-ICP27	Ore grade Pt, Pd and Au by ICP	ICP-AES
Pb-OG46	Ore Grade Pb - Aqua Regia	VARIABLE
Zn-OG46	Ore Grade Zn - Aqua Regia	VARIABLE
Cu-OG46	Ore Grade Cu - Aqua Regia	VARIABLE
ME-OG46	Ore Grade Elements - AquaRegia	ICP-AES

To: ASCENTION MINERAL CORP  
 ATTN: MANLEY FREDLUND  
 1801 - 3RD AVE. S.E.  
 SALMON ARM BC V1E 1V1

This is the Final Report and supersedes any preliminary report with this certificate number. Results apply to samples as submitted. All pages of this report have been checked and approved for release.

Signature:   
 Colin Ramshaw, Vancouver Laboratory Manager



**ALS Chemex**  
**EXCELLENCE IN ANALYTICAL CHEMISTRY**  
 ALS Canada Ltd.  
 212 Brooksbank Avenue  
 North Vancouver BC V7J 2C1  
 Phone: 604 964 0221 Fax: 604 964 0218 www.alschemex.com

To: ASCENTION MINERAL CORP  
 1801 - 3RD AVE. S.E.  
 SALMON ARM BC V1E 1V1

Page: 2 - A  
 Total # Pages: 2 (A)  
 Finalized Date: 18-JAN-2008  
 Account: ASCMIN

CERTIFICATE OF ANALYSIS VA07147727									
Sample Description	Method Analyte Units LOR	WEI-21	Cu-OG46	PGM-ICP27	PGM-ICP27	PGM-ICP27	Pb-OG46	Zn-OG46	SAMPLE #
		Rec'd Wt kg	Cu %	Au ppm	Pt ppm	Pd ppm	Pb %	Zn %	
STANDARD #7		0.32	0.89	<0.03	<0.03	<0.03	0.04	0.60	7 5 1 4 3 2 10
STANDARD #6		0.48	5.94	1.47	<0.03	0.04	0.17	1.30	
STANDARD LAKE W		0.80	7.12	2.10	<0.03	<0.03	0.01	2.00	
STANDARD #1		0.60	2.74	0.58	<0.03	<0.03	0.02	1.45	
STANDARD S. E. H. W.		0.60	2.55	0.16	<0.03	<0.03	0.01	0.22	
STANDARD LOWER T		0.50	1.59	0.21	<0.03	<0.03	0.01	0.19	
STANDARD SOUTH T		0.36	0.92	0.20	0.03	0.03	0.03	0.91	
STANDARD #3		0.82	2.20	0.69	<0.03	<0.03	0.01	0.74	
STANDARD #2		0.56	2.99	0.38	<0.03	<0.03	0.01	0.55	
STANDARD BOTTOM		0.44	0.74	0.40	<0.03	<0.03	0.13	0.14	