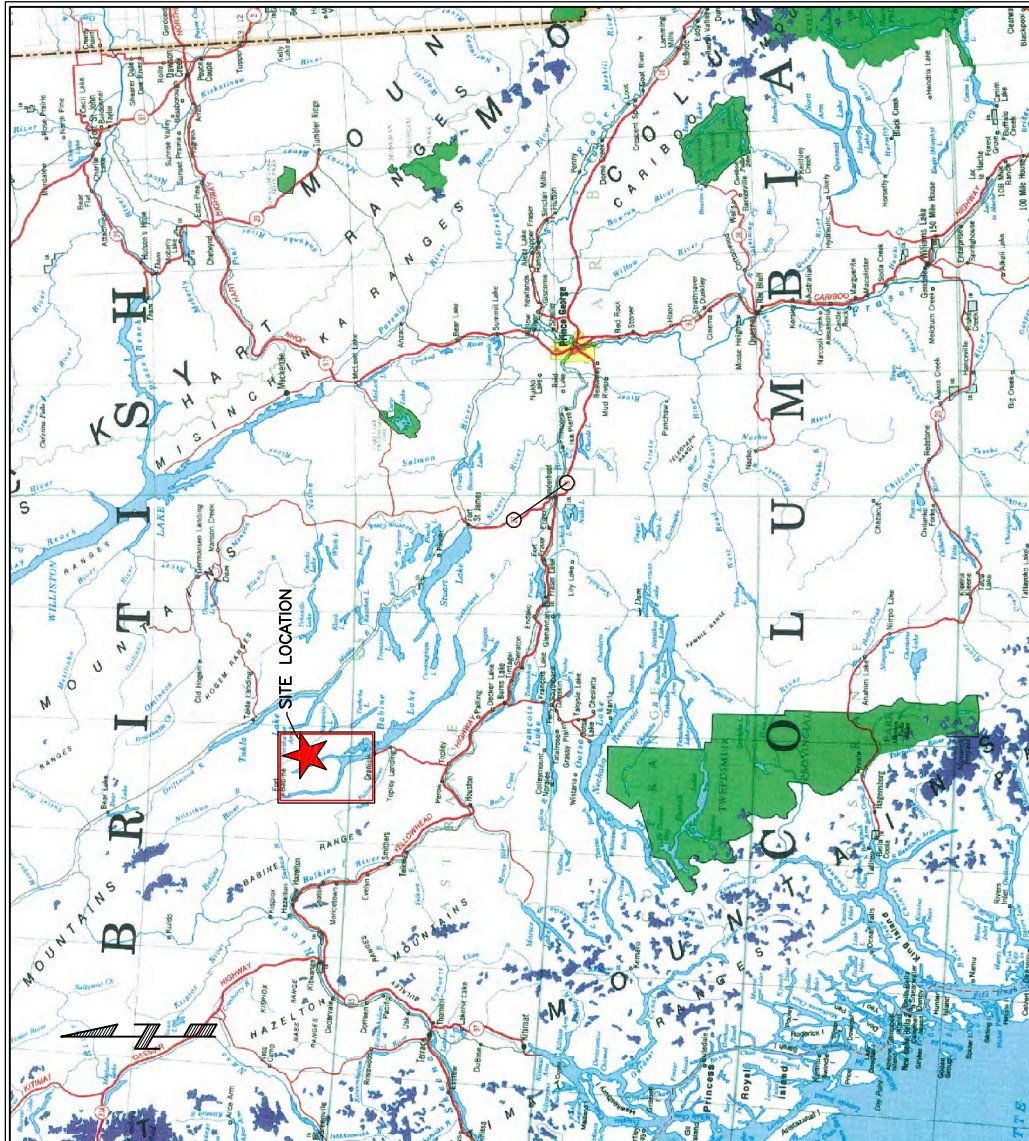
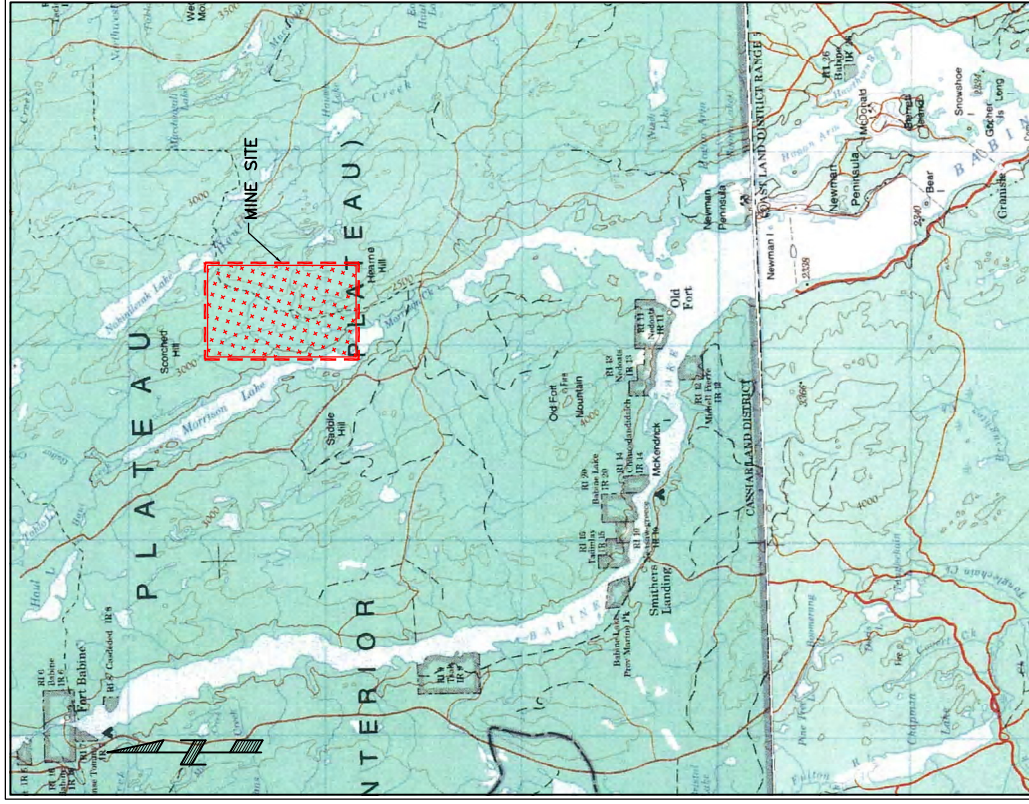


**BC Geological Survey
Assessment Report
30157e**

DRAWINGS

D-1001	Site Location Plan
D-1002	General Site Arrangement
D-1003	Site Investigation Plan
D-1005	Geologic Sections – Section A - Main Dam – Sheet 1 of 3
D-1006	Geologic Sections – Section B - North Dam – Sheet 2 of 3
D-1007	Geologic Sections – Section C, D and E – Sheet 3 of 3
D-1008	Surface Water Catchments
D-1009	Terrain and Geomorphology Map
D-1101	Tailings Storage Facility – Starter Dam - Plan
D-1102	Tailings Storage Facility – Ultimate Dam - Plan
D-1103	Tailings Storage Facility – Ultimate Dam Sections – Main Dam
D-1104	Tailings Storage Facility – Ultimate Dam Sections – North and West Dams
D-1105	Tailings Storage Facility - Closure Plan
D-1201	Waste Dumps and Temporary Stockpiles – End of Open Pit
D-1202	Waste Dumps and Temporary Stockpiles – Cross-Sections A and B
D-1203	Waste Dumps and Temporary Stockpiles – Cross-Sections C and D
D-1204	Waste Dumps and Temporary Stockpiles – Cross-Section E
D-1205	Waste Dumps and Temporary Stockpiles – Closure Plan
D-1206	Waste Dumps and Temporary Stockpiles – Diversion Ditch Profile
D-1401	Main Dam Access Road – Plan, Profile and Section
D-1402	Reclaim Pipeline Access Road – Plan Profile and Section



SITE LOCATION
SCALE A

SITE LOCATION
N.T.S.

NOT FOR CONSTRUCTION

NOTES:

- TOPOGRAPHY COURTESY OF SOFTMAP.

NO.	DATE	ISSUE / REASON
D	DEC 6, 2008	ISSUED WITH GEOTECHNICAL FEASIBILITY STUDY REPORT
C	MAY 26, 2008	ISSUED FOR FINAL REPORT
B	APRIL 25, 2008	ISSUED FOR CLIENT REVIEW
A		NOT USED

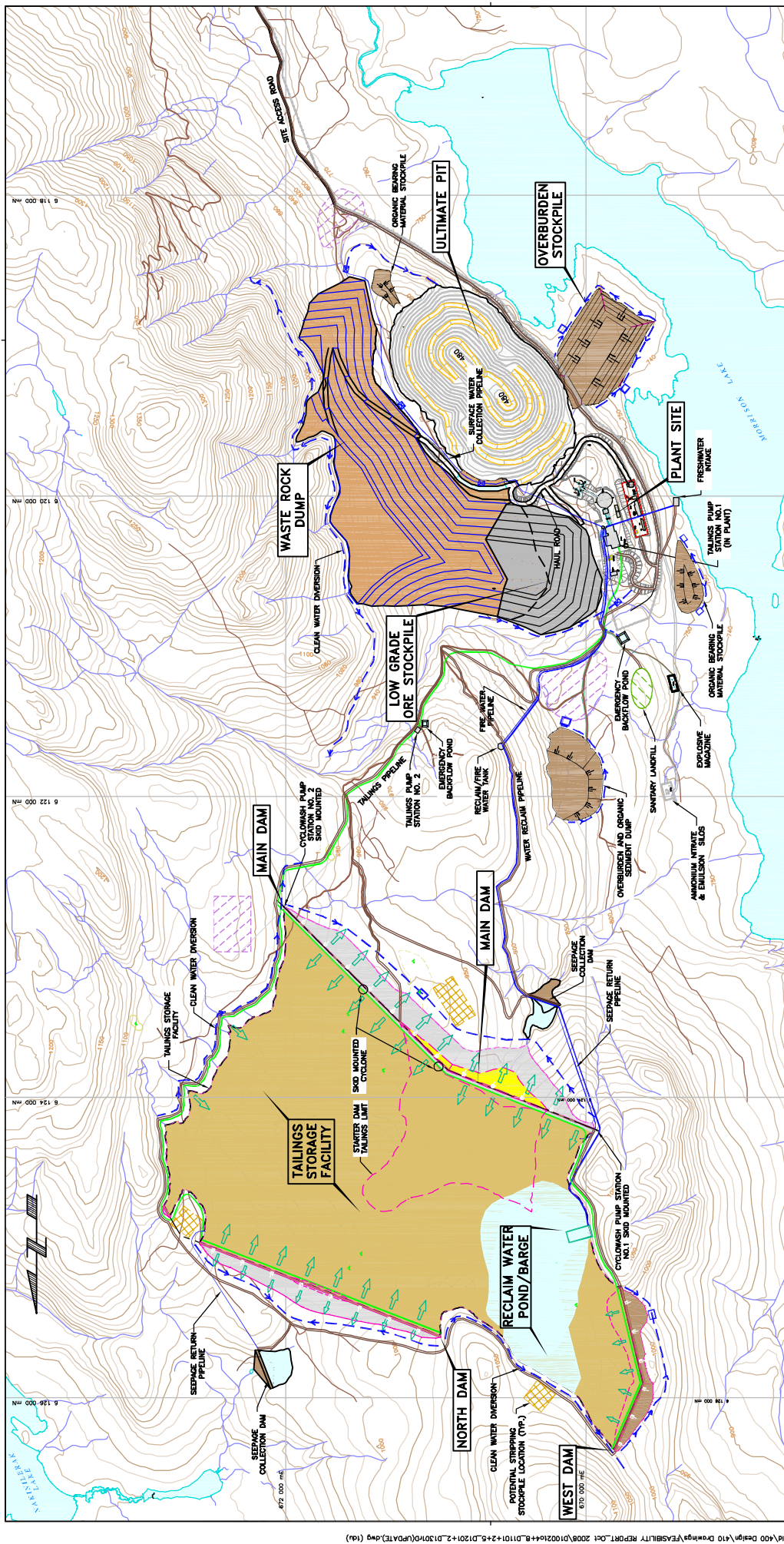
APPROVAL	DATE	BY
PL		TU
OWN		CHW
CHKD		CHW
ISSN		TU
APPO		TU

CLIENT

PROJECT: MORRISON COPPER/GOLD PROJECT
 TITLE: GEOTECHNICAL FEASIBILITY DESIGN
 SCALE: AS SHOWN
 PROJECT No.: M09382 A01
 SHEET No.: D-1001

DATE: 4/23/2008
 SCALE: 1:7500
 DRAWING FILE: M09382A01 - Morrison Copper Gold/100 Design/110 Design/FEASIBILITY REPORT/D-1001 Site Location Planning (p06)

CANCEL PRINTS BEARING PREVIOUS REVISION



LEGEND

- EXISTING ROADS
- BORROW AREAS
- STOCKPILE AREAS
- TAILINGS LINE
- WATER PIPELINE
- DITCH
- REFORM DIVERSION
- HAUL ROAD
- SEDIMENT POND
- PUMPING SUMP

NOTES:

- TOPOGRAPHY IS 10 m CONTOUR INTERVAL, PRODUCED FROM AERIAL PHOTOGRAPHY FLOWN IN SEP. 2008 AND COMPILED BY EAGLE MAPPING LTD
- DATUM IS UTM ZONES, ZONE 9
- PLANT SITE LAYOUT PROVIDED BY WARDROP (NOV. 4, 2009).

NO.	DATE	ISSUE / REASON	ISSUED BY	CHECKED BY	APP'D
E	DEC 6, 2008	ISSUED WITH GEOTECHNICAL FEASIBILITY STUDY REPORT	TJ	TJ	MP
D	DEC 3, 2008	2008 UPDATE - DRAFT FOR CLIENT REVIEW	PL	TJ	
C	MAY 29, 2008	ISSUED WITH FINAL 2007 S.I. REPORT	PL	TJ	
B	APR 25, 2008	ISSUED FOR CLIENT REVIEW	PL	TJ	
A	APR 15, 2008	ISSUED FOR CLIENT REVIEW	PL	TJ	

NOT FOR CONSTRUCTION



MORRISON COPPER/GOLD PROJECT
GEOTECHNICAL FEASIBILITY DESIGN

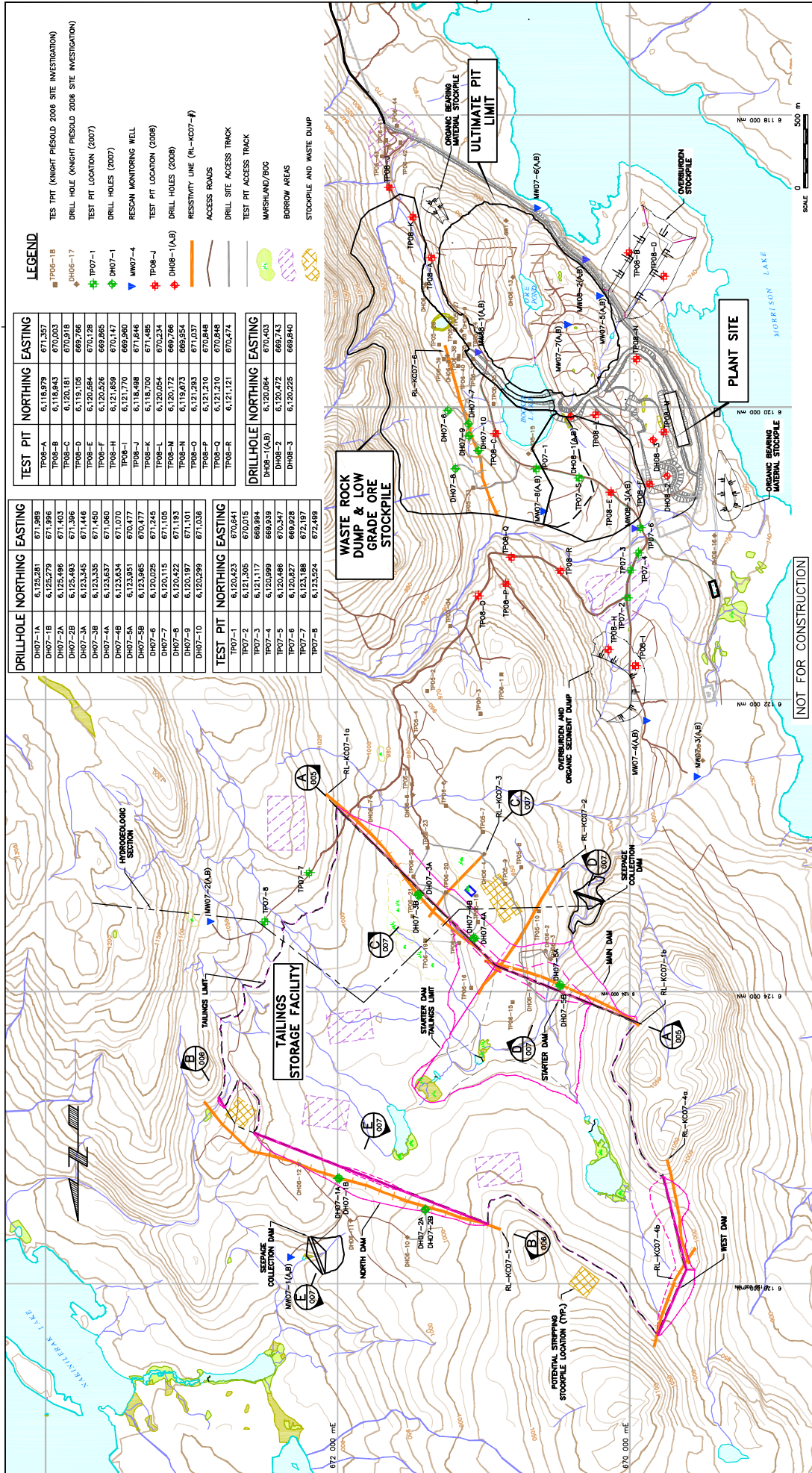
GENERAL SITE ARRANGEMENT

SCALE: AS SHOWN PROJECT NO. M09382_A01

REV. No. D-1002

E.L.

CANCEL PRINTS BEARING PREVIOUS REVISION



LEGEND



- TES TPT (KNIGHT PIESOLD 2008 SITE INVESTIGATION)
- DRILL HOLE (KNIGHT PIESOLD 2008 SITE INVESTIGATION)
- TEST PIT LOCATION (2007)
- DRILL HOLES (2007)
- REASON MONITORING WELL
- TEST PIT LOCATION (2008)
- DRILL HOLES (2008)
- RESISTIVITY LINE (RL-KC07-F)
- ACCESS ROADS
- TEST PIT ACCESS TRACK
- DRILL PIT ACCESS TRACK
- MARSHLAND/BOG
- BORROW AREAS
- STOCKPILE AND WASTE DUMP

TEST PIT	NORTHING	EASTING
TP08-A	6,118,978	671,357
TP08-B	6,118,943	670,003
TP08-C	6,120,181	670,918
TP08-D	6,119,105	669,766
TP08-E	6,120,584	670,128
TP08-F	6,120,526	669,865
TP08-H	6,121,859	670,147
TP08-I	6,121,770	669,960
TP08-J	6,118,488	671,646
TP08-K	6,118,700	671,485
TP08-L	6,120,084	670,234
TP08-M	6,120,172	669,766
TP08-N	6,119,973	669,954
TP08-O	6,121,293	671,037
TP08-P	6,121,270	670,848
TP08-R	6,121,121	670,473

DRILLHOLE	NORTHING	EASTING
DH07-1	6,120,423	670,615
DH07-2	6,121,305	670,015
DH07-3	6,121,117	669,994
DH07-4	6,120,999	669,939
DH07-5	6,120,468	670,347
DH07-6	6,120,827	669,928
DH07-7	6,123,188	672,197
DH07-8	6,123,254	672,489

TEST PIT	NORTHING	EASTING
TP07-1	6,120,423	670,615
TP07-2	6,121,305	670,015
TP07-3	6,121,117	669,994
TP07-4	6,120,999	669,939
TP07-5	6,120,468	670,347
TP07-6	6,120,827	669,928
TP07-7	6,123,188	672,197
TP07-8	6,123,254	672,489

CLIENT

PROJECT
MORRISON COPPER/GOLD PROJECT
GEOTECHNICAL FEASIBILITY DESIGN

TITLE
SITE INVESTIGATION PLAN

SCALE
AS SHOWN

PROJECT No.
M09382_A01

DATE
D-1003

REVISION
E

NOT FOR CONSTRUCTION

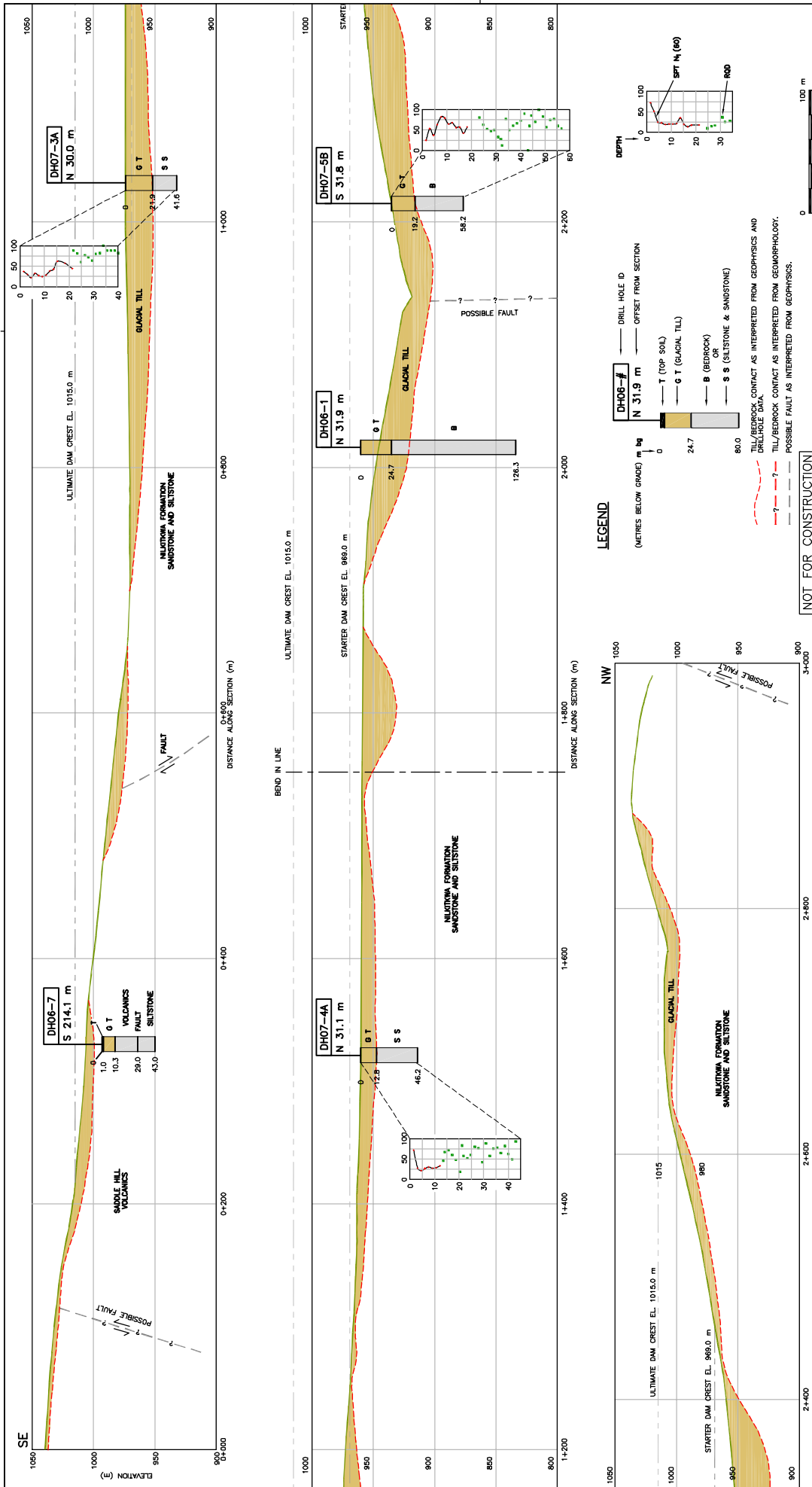
No.	DATE	ISSUE / REASON	OWNER	CHKD	ISSUED BY	APP'D
E	DEC 6, 2008	ISSUED WITH GEOTECHNICAL FEASIBILITY STUDY REPORT				
D	DEC 3, 2008	2008 UPDATE - DRAFT FOR CLIENT REVIEW	TD			TJ
C	MAY 29, 2008	ISSUED WITH FINAL 2007 S.I. REPORT	PL			TJ
B	APR 23, 2008	ISSUED FOR CLIENT REVIEW	PL			TJ
A	APR 11, 2008	DRAFT FOR CLIENT REVIEW	PL			TJ

NOTES:

- TOPOGRAPHY IS 10 m CONTOUR INTERVAL. PRODUCED FROM AERIAL PHOTOGRAPHY AND COMPILED BY EAGLE MAPPING LTD.
- DALY IN LTA MASS ZONE 9.
- PLANT SITE LAYOUT PROVIDED BY WARDROP (NOV. 4, 2008).
- REASON MONITORING WELL LOCATION RECEIVED FEBRUARY 20, 2008.

REVISIONS

NO.	DATE	ISSUE / REASON	OWNER	CHKD	ISSUED BY	APP'D
E	DEC 6, 2008	ISSUED WITH GEOTECHNICAL FEASIBILITY STUDY REPORT				
D	DEC 3, 2008	2008 UPDATE - DRAFT FOR CLIENT REVIEW	TD			TJ
C	MAY 29, 2008	ISSUED WITH FINAL 2007 S.I. REPORT	PL			TJ
B	APR 23, 2008	ISSUED FOR CLIENT REVIEW	PL			TJ
A	APR 11, 2008	DRAFT FOR CLIENT REVIEW	PL			TJ



PROJECT: MORRISON COPPER/GOLD PROJECT
 TITLE: GEOTECHNICAL FEASIBILITY DESIGN

CLIENT:

DATE: 12/5/2008
 SCALE: AS SHOWN
 PROJECT NO.: M09382A1
 SHEET NO.: D-1005

NOTES:

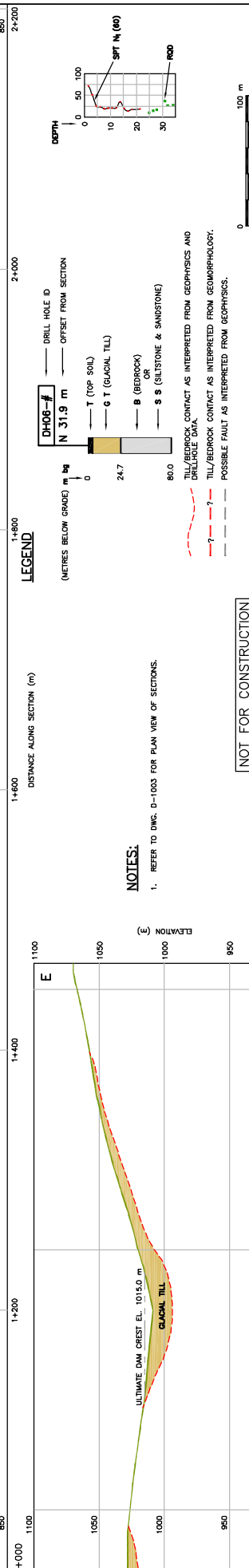
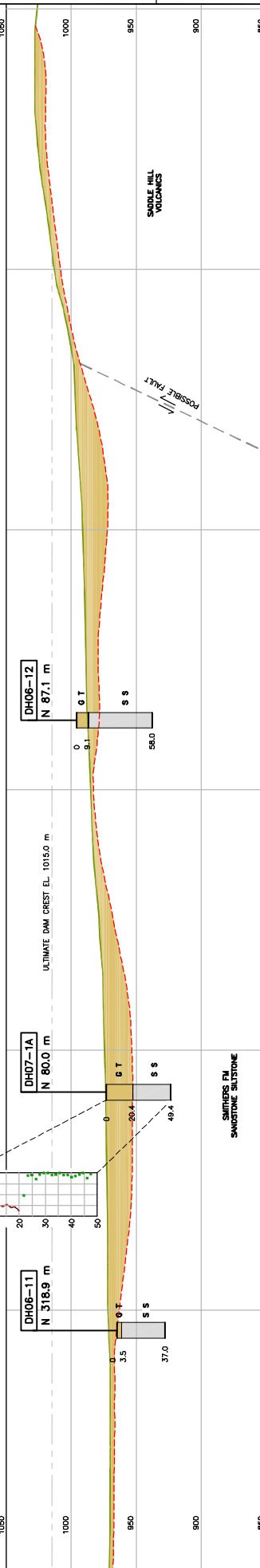
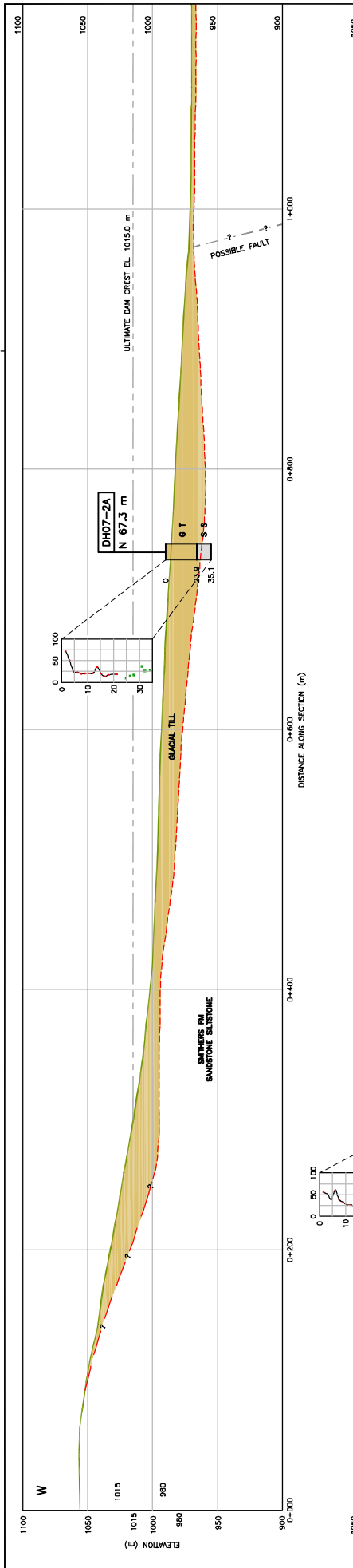
- REFER TO DWG. D-1003 FOR PLAN VIEW OF SECTIONS.

NO.	DATE	ISSUE / REASON	ISSUED BY	DESIGNED BY	CHECKED BY	APPROVED BY
D	DEC 6, 2008	ISSUED WITH GEOTECHNICAL FEASIBILITY STUDY REPORT	PL	CK		
C	MAY 28, 2008	ISSUED FOR FINAL REPORT	PL	CK		
B		NOT USED				
A	MAY 16, 2008	ISSUED FOR CLIENT REVIEW	PL	CK		

REVISIONS:

NO.	DATE	ISSUE / REASON	ISSUED BY	DESIGNED BY	CHECKED BY	APPROVED BY

DATE: 14/9/07
 SCALE: 1:13(P)
 DRAWING FILE: M:\09382A1 - Morrison Copper Gold\400 Design\410 Drawings\FEASIBILITY REPORT\Oct 2008\01005167+D110314\0\PRJAT3.dwg (cshun)



LEGEND
 (METRES BELOW GRADE) m b.g.
 — DRILL HOLE ID
 — OFFSET FROM SECTION
 — T (TOP SOIL)
 — G T (GLACIAL TILL)
 — B (BEDROCK)
 — S S (SILTSTONE & SANDSTONE)
 — TILL/BEDROCK CONTACT AS INTERPRETED FROM GEOPHYSICS AND DRILLHOLE DATA.
 — TILL/BEDROCK CONTACT AS INTERPRETED FROM GEOMORPHOLOGY.
 — POSSIBLE FAULT AS INTERPRETED FROM GEOPHYSICS.

NOTES:
 1. REFER TO DWG. D-1003 FOR PLAN VIEW OF SECTIONS.

CLIENT
 MORRISON COPPER/GOLD PROJECT
 GEOTECHNICAL FEASIBILITY STUDY

TITLE
 GEOLOGIC SECTIONS
 SECTION B - NORTH DAM
 SHEET 2 OF 3

SCALE
 AS SHOWN

PROJECT No.
 M09382_A01

DWG. No.
 D-1006

REV.
 D

DATE
 12/9/2008

SCALE
 1:13(P)

DATE
 12/9/2008

PROJECT
 MORRISON COPPER/GOLD PROJECT
 GEOTECHNICAL FEASIBILITY STUDY REPORT

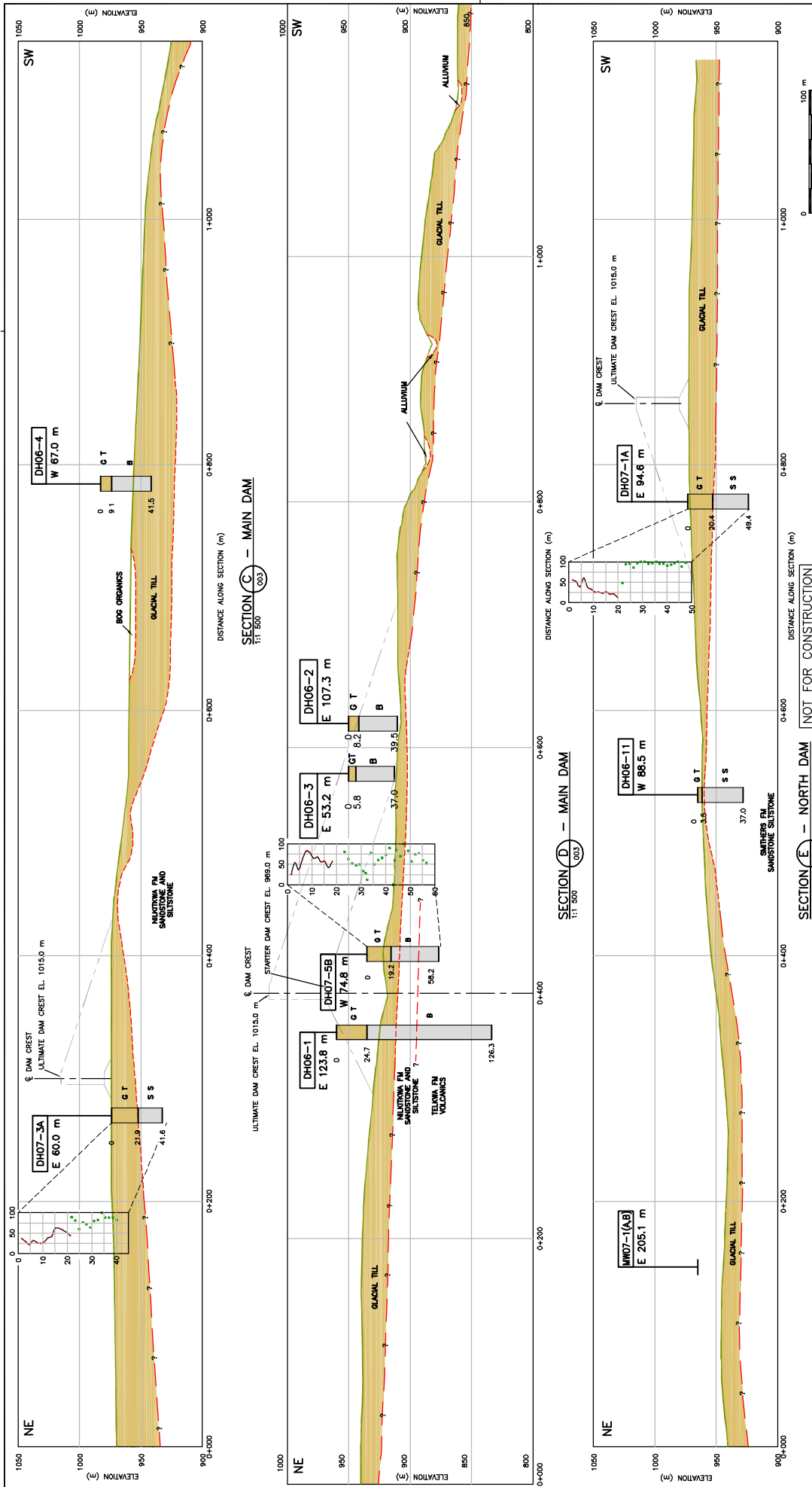
ISSUE / REASON

NO.	DATE	ISSUE / REASON	ISSUED BY	DESIGNED BY	APPROVED BY
D	DEC 6, 2008	ISSUED WITH GEOTECHNICAL FEASIBILITY STUDY REPORT	PL	CK	CK
C	MAY 28, 2008	ISSUED FOR FINAL REPORT	PL		
B		NOT USED			
A	MAY 16, 2008	ISSUED FOR CLIENT REVIEW	PL	CK	CK

REFERENCE DRAWING

NOT FOR CONSTRUCTION

CLIENT



NOTES:

- REFER TO DWG. D-1003 FOR PLAN VIEW OF SECTIONS.
- FOR LEGEND SEE DWG. D-1005.

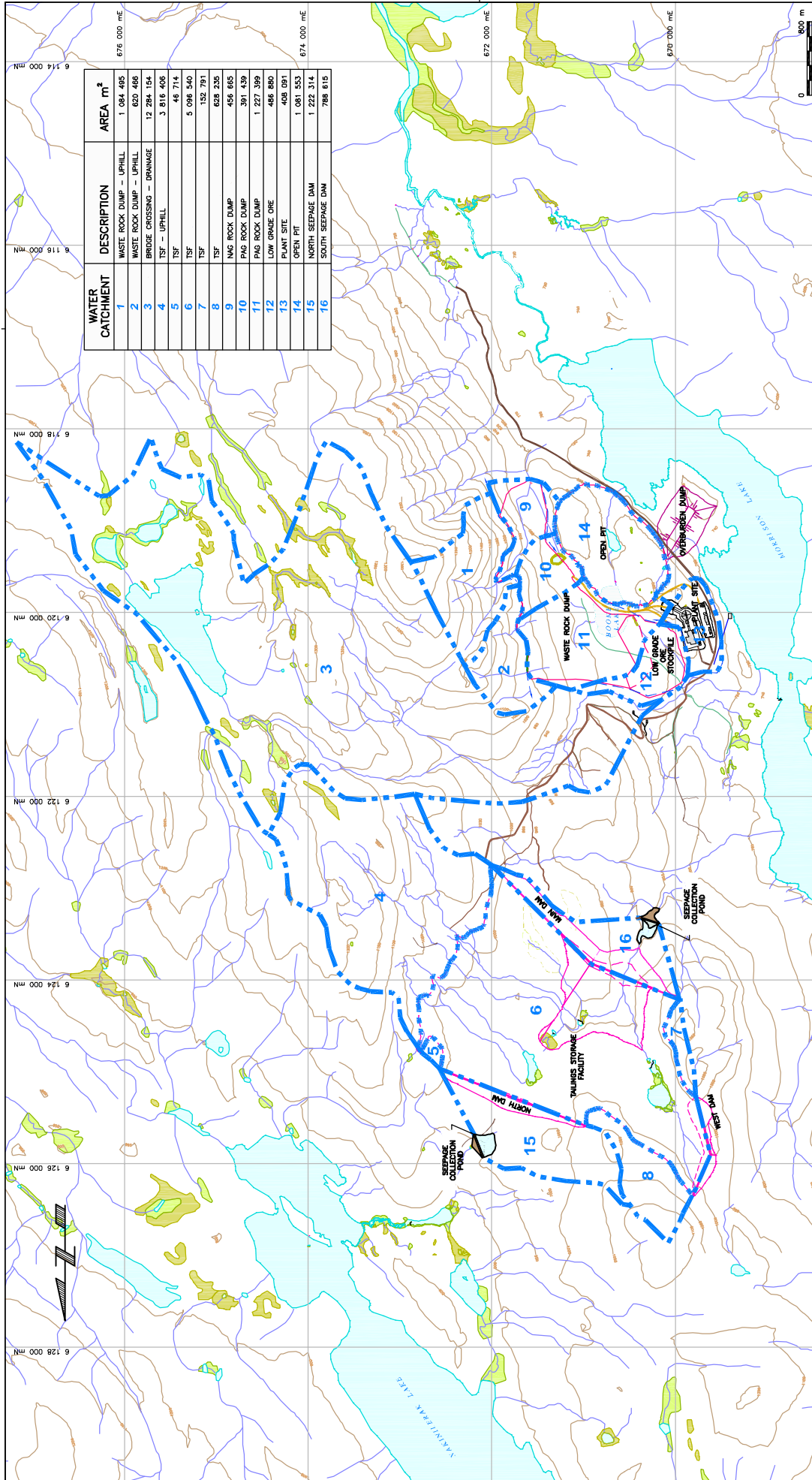
REV	DATE	ISSUE / REASON	CHKD	DESIGN	APP'D
D	DEC 6, 2008	ISSUED WITH GEOTECHNICAL FEASIBILITY STUDY REPORT	PL	CK	
C	MAY 28, 2008	ISSUED FOR FINAL REPORT	PL	CK	
B		NOT USED			
A	MAY 16, 2008	ISSUED FOR CLIENT REVIEW	PL	CK	

PROJECT: MORRISON COPPER/GOLD PROJECT
TITLE: GEOLOGIC SECTIONS SECTION C, D AND E SHEET 3 OF 3
SCALE: AS SHOWN
PROJECT No.: M09382-A01
DWG. No.: D-1007

CLIENT:

SECTION C - MAIN DAM
SECTION D - MAIN DAM
SECTION E - NORTH DAM

NOT FOR CONSTRUCTION



WATER CATCHMENT	DESCRIPTION	AREA m ²
1	WASTE ROCK DUMP - UPHILL	1 084 495
2	WASTE ROCK DUMP - UPHILL	628 468
3	BRIDGE CROSSING - DRAINAGE	12 284 154
4	TSF - UPHILL	3 816 408
5	TSF	46 714
6	TSF	5 086 540
7	TSF	152 793
8	TSF	628 235
9	WASTE ROCK DUMP	456 685
10	WASTE ROCK DUMP	391 439
11	WASTE ROCK DUMP	1 227 399
12	LOW GRADE ORE	486 890
13	PLANT SITE	408 091
14	OPEN PIT	1 081 553
15	NORTH SEPARATE DAM	1 222 314
16	SOUTH SEPARATE DAM	788 815

NOT FOR CONSTRUCTION

LEGEND
 - - SURFACE WATER CATCHMENT BOUNDARY

NOTES:

- TOPOGRAPHY IS 50 m CONTOUR INTERVAL, PRODUCED FROM AERIAL PHOTOGRAPHY FLOWN IN SEP. 2008 AND COMPILED BY EAGLE MAPPING LTD.
- TAILINGS STORAGE FACILITY LAYOUT PROVIDED BY WARDROP (OCT. 2, 2008).
- PLANT SITE LAYOUT PROVIDED BY WARDROP (OCT. 2, 2008).

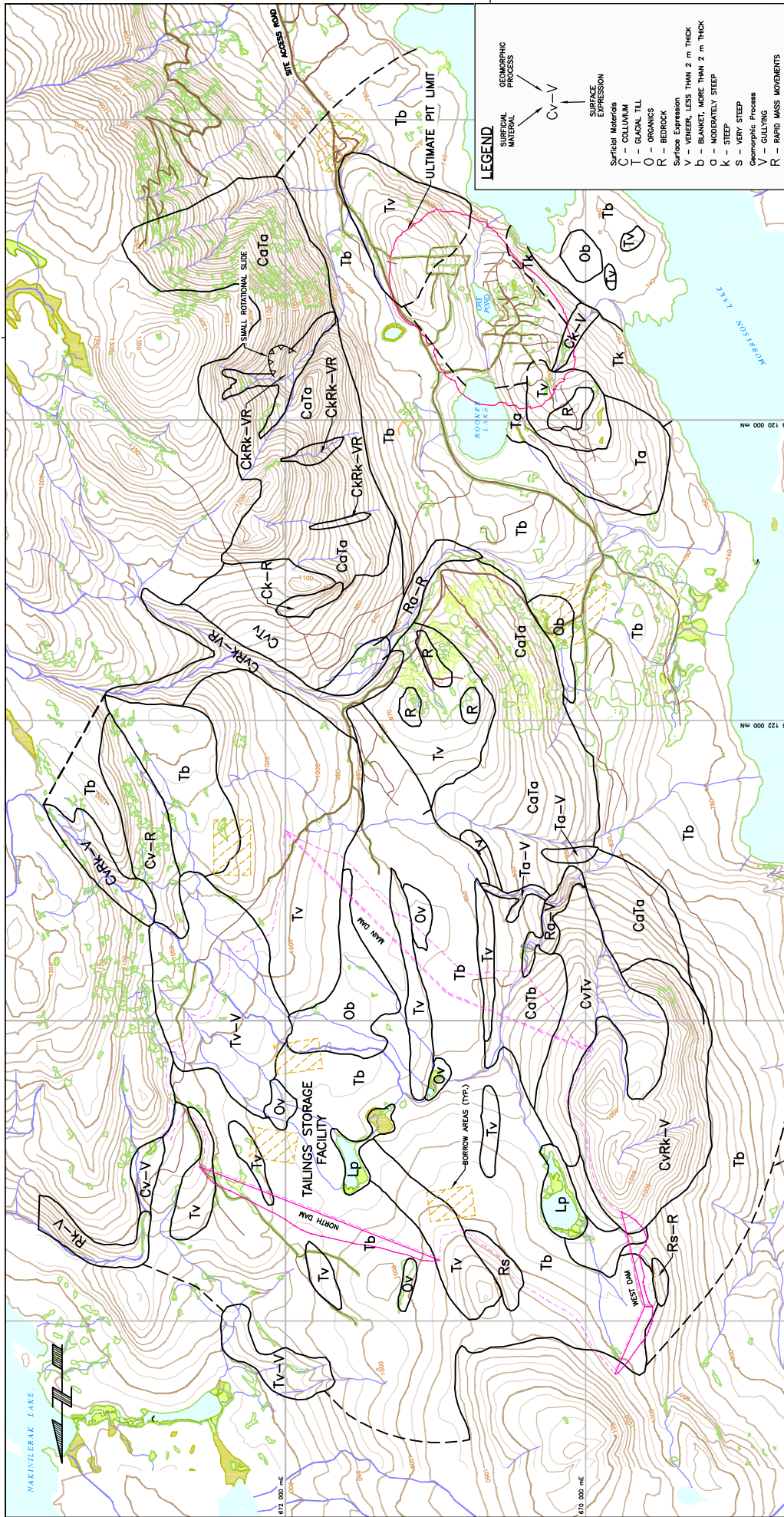
DATE: 17-08-11
 Scale: 1:25,000
 Drawing No. M03382A01

DATE: DEC 6, 2008
 ISSUE / REASON: ISSUED WITH GEOTECHNICAL FEASIBILITY STUDY REPORT
 DATE: DEC 3, 2008
 ISSUE / REASON: DRAWN FOR CLIENT REVIEW

NO.	DATE	ISSUE / REASON	BY	CHECKED	APP'D
A	DEC 3, 2008	DRAWN FOR CLIENT REVIEW			
B	DEC 6, 2008	ISSUED WITH GEOTECHNICAL FEASIBILITY STUDY REPORT			

CLIENT: MORRISON COPPER/GOLD PROJECT
 TITLE: GEOTECHNICAL FEASIBILITY DESIGN
 SURFACE WATER CATCHMENTS

SCALE	AS SHOWN	PROJECT No.	Rev. No.	Sheet No.
		M03382 A01		D-1008



NOTES:

1. Topography is 10 m contour interval, produced from aerial photography flown in Sept., 2006 and compiled by Eagle Mapping Ltd. Datum in UTM NAD83, Zone 9.
2. DATUM IN UTM NAD83, ZONE 9.

NOT FOR CONSTRUCTION

CLIENT: **pbbm**

PROJECT: MORRISON COPPER/GOLD PROJECT

TITLE: GEOTECHNICAL FEASIBILITY DESIGN

SCALE: AS SHOWN

PROJECT No. M03382 A01

DATE: D-1009

CANCEL PRINTS BEARING PREVIOUS REVISION

TERRAIN AND GEOMORPHOLOGY MAP

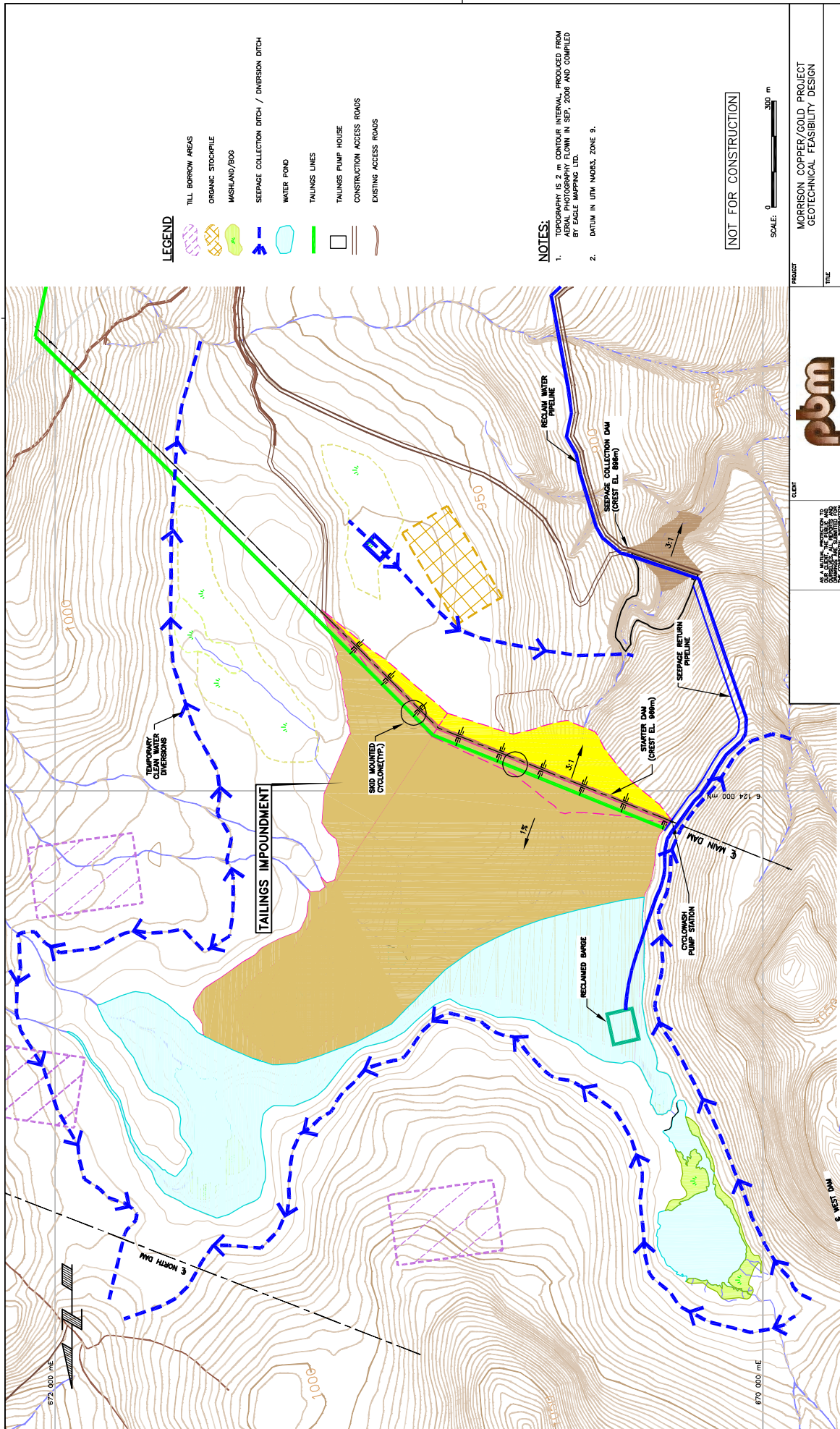
DATE: 12/5/2008

DRAWING FILE: M:\03382A01 - Morrison Copper - Design\10 Drawings\FEASIBILITY REPORT\WORK\KNDP-10201015-D-1101 (AC).dwg (dhng)

DATE: 12/5/2008

DRAWING NO.:

NO.	DATE	ISSUE / REVISION	BY	CHKD	DESIGN	APPD
B	DEC 6, 2008	ISSUED WITH GEOTECHNICAL FEASIBILITY STUDY REPORT	AC	GA	GA	NPPD
A	NOV 17, 2008	DRAWN FOR CLIENT REVIEW	AC	GA	GA	NPPD



LEGEND

- TILL BORROW AREAS
- ORGANIC STOCKPILE
- WASHLAND/POD
- SEEPAGE COLLECTION DITCH / DIVERSION DITCH
- WATER POND
- TAILINGS LINES
- TAILINGS PUMP HOUSE
- CONSTRUCTION ACCESS ROADS
- EXISTING ACCESS ROADS

NOTES:

1. TOPOGRAPHY IS 2.0M CONTOUR INTERVAL, PRODUCED FROM DATA COLLECTED IN 2007 AND COMPILED BY EAGLE MAPPING LTD.
2. DATUM IN UTM MGRS, ZONE 9.

[NOT FOR CONSTRUCTION]

SCALE: 0 300 m

PROJECT: MORRISON COPPER/GOLD PROJECT
 TITLE: GEOTECHNICAL FEASIBILITY DESIGN

CLIENT: **pbm** **Klohn Crippen Berger**

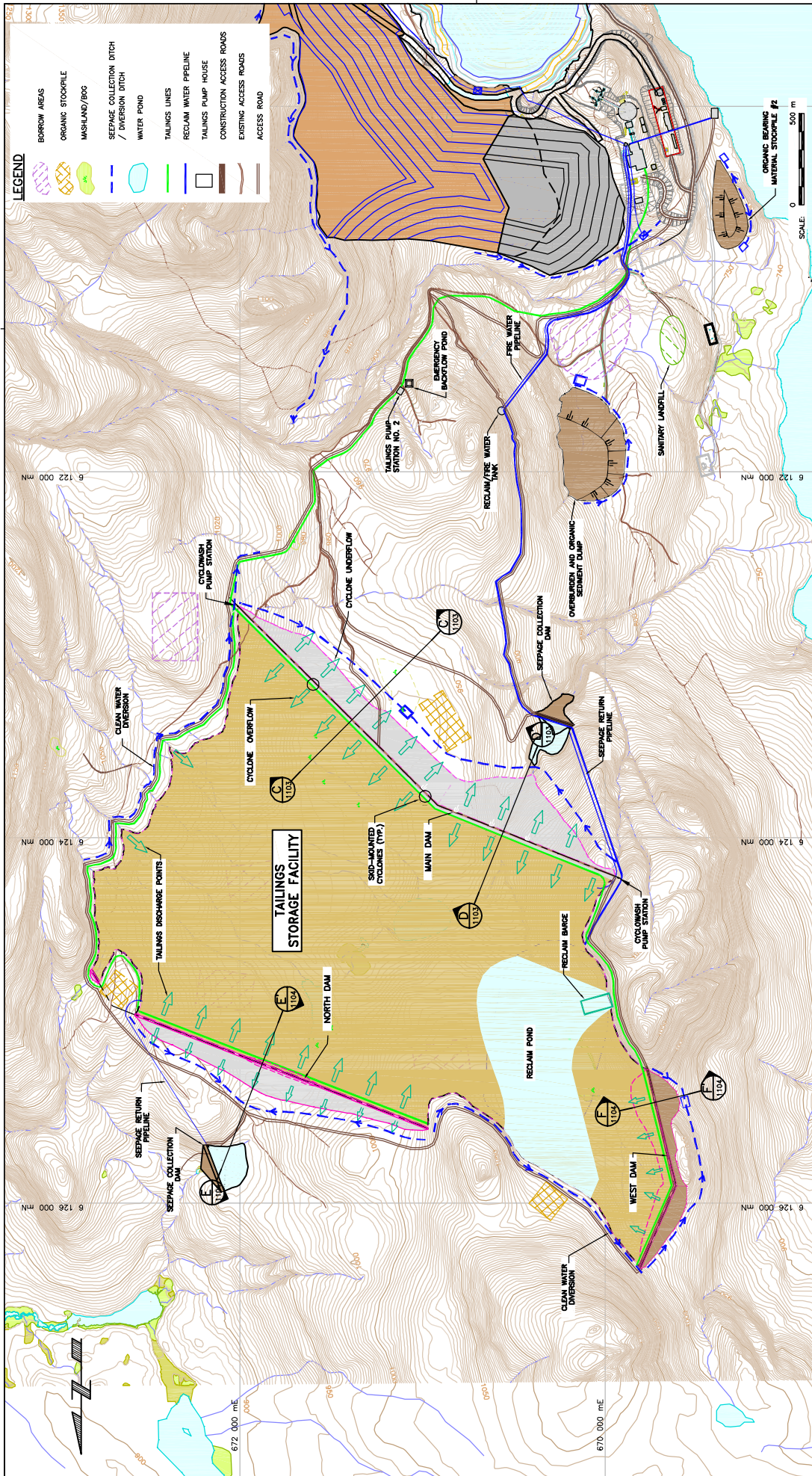
PROJECT No. M09382_A01
 SHEET No. D-1101
 SCALE: AS SHOWN

DATE: 10/17/11
 SCALE: 1=1000
 DATE: 11/15/2008
 DRAWING FILE: M:\09382A01 - Morrison Copper Gold\400 Design\400 Design\FEASIBILITY REPORT\01 Oct 2008\01002101+2-5-D1201+2-0130H\01PDAT1.dwg (1d)

DATE: 10/17/11
 SCALE: 1=1000
 DATE: 11/15/2008
 DRAWING FILE: M:\09382A01 - Morrison Copper Gold\400 Design\400 Design\FEASIBILITY REPORT\01 Oct 2008\01002101+2-5-D1201+2-0130H\01PDAT1.dwg (1d)

NO.	DATE	ISSUE / REASON	BY	CHKD	DESIGN	APP'D
C	DEC 6, 2008	ISSUED WITH GEOTECHNICAL FEASIBILITY STUDY REPORT				
B	NOV. 17, 2008	DRAFT FOR CLIENT REVIEW				
A	MAY 16, 2008	DRAFT FOR CLIENT REVIEW				

NO.	DATE	ISSUE / REASON	BY	CHKD	DESIGN	APP'D
C	DEC 6, 2008	ISSUED WITH GEOTECHNICAL FEASIBILITY STUDY REPORT				
B	NOV. 17, 2008	DRAFT FOR CLIENT REVIEW				
A	MAY 16, 2008	DRAFT FOR CLIENT REVIEW				



LEGEND

- BORROW AREAS
- ORGANIC STOCKPILE
- WASHLAND/BOG
- SEWAGE COLLECTION DITCH / DIVERSION DITCH
- WATER POND
- TAILINGS LINES
- RECLAIM WATER PIPELINE
- TAILINGS PUMP HOUSE
- CONSTRUCTION ACCESS ROADS
- EXISTING ACCESS ROADS
- ACCESS ROAD

PROJECT
MORRISON COPPER/GOLD PROJECT
GEOTECHNICAL FEASIBILITY DESIGN

TITLE
TAILINGS STORAGE FACILITY
ULTIMATE DAM - PLAN

SCALE
AS SHOWN

PROJECT No.
M093382_A01

Sheet No.
D-1102

DATE
10-17-11

Scale
1:1000

Client
p b m
Klohn Crippen Berger

NOT FOR CONSTRUCTION

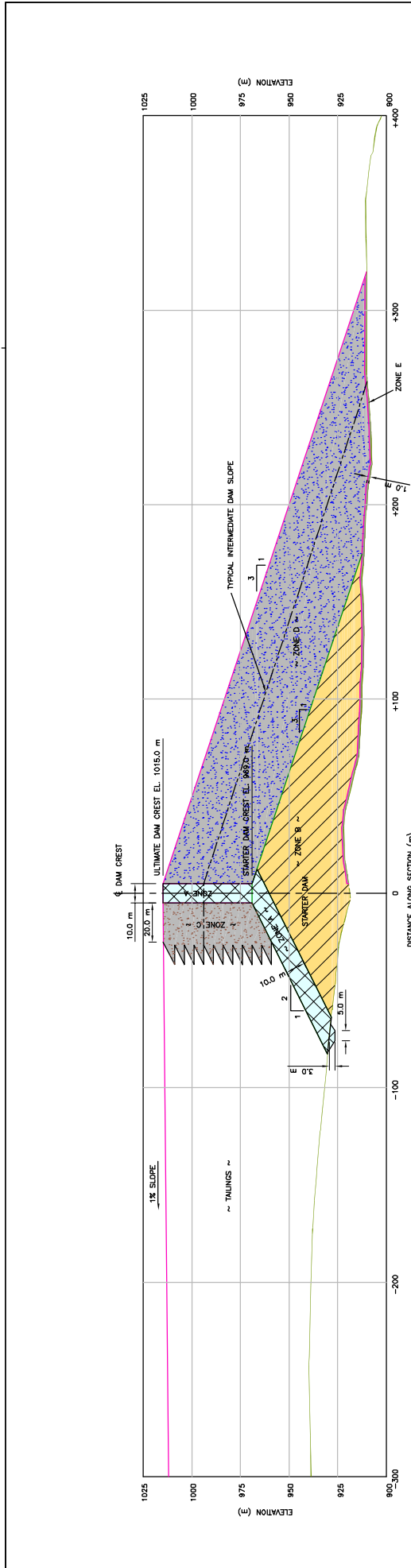
NO.	DATE	ISSUE / REASON	DESIGNER	CHECKED	APPROVED
D	DEC. 5, 2008	ISSUED WITH GEOTECHNICAL FEASIBILITY STUDY REPORT	TU		
C	DEC. 5, 2008	ADDRESSES PBM COMMENTS	TU		
B	NOV. 17, 2008	DRAFT FOR CLIENT REVIEW	TU		
A	MAY 16, 2008	DRAFT FOR CLIENT REVIEW	TU		

NOTES:

1. HORIZONTAL 5 m CONTOUR INTERVAL. PRODUCED FROM PHOTOGRAMMETRY POINT IN 387, 2006 AND COMPILED BY EAGLE MAPPING LTD.
2. DATUM IN UTM MABLES, ZONE 9.

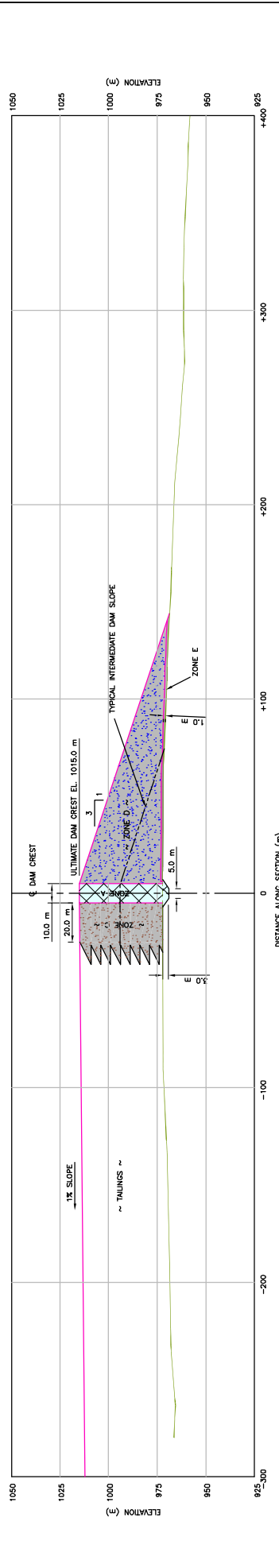
REFERENCE DRAWING

Date: 10-17-11
 Scale: 1:1000
 Drawing File: M093382A01 - Morrison Copper Gold v400 Design v10 Drawing v1
 Drawing Title: MORRISON COPPER/GOLD PROJECT - GEOTECHNICAL FEASIBILITY STUDY REPORT - D-1102
 Project: MORRISON COPPER/GOLD PROJECT
 Client: p b m
 Designer: TU
 Checked: TU
 Approved: TU
 Issue / Reason: DRAFT FOR CLIENT REVIEW
 Date: MAY 16, 2008
 Issue / Reason: DRAFT FOR CLIENT REVIEW
 Date: NOV. 17, 2008
 Issue / Reason: ADDRESSES PBM COMMENTS
 Date: DEC. 5, 2008
 Issue / Reason: ISSUED WITH GEOTECHNICAL FEASIBILITY STUDY REPORT
 Scale: AS SHOWN
 Sheet No.: D-1102
 Project No.: M093382_A01
 Title: TAILINGS STORAGE FACILITY ULTIMATE DAM - PLAN
 Project: MORRISON COPPER/GOLD PROJECT GEOTECHNICAL FEASIBILITY DESIGN



SECTION C ULTIMATE MAIN DAM

1102



SECTION D ULTIMATE MAIN DAM

1102

- LEGEND**
- ZONE A - LOW PERMEABILITY TILL CORE
 - ZONE B - RANDOM FILL
 - ZONE C - UPSTREAM CYCLONED SAND
 - ZONE D - DOWNSTREAM CYCLONED SAND
 - ZONE E - SAND AND GRAVEL BLANKET DRAIN

NOT FOR CONSTRUCTION

NO.	DATE	ISSUE / REASON	DESIGNER	CHECKED	APPROVED
C	DEC 6, 2008	ISSUED WITH GEOTECHNICAL FEASIBILITY STUDY REPORT			
B	NOV. 17, 2008	DRAFT FOR CLIENT REVIEW	FL	TU	
A	MAY 16, 2008	DRAFT FOR CLIENT REVIEW			

PROJECT: MORRISON COPPER/GOLD PROJECT
 GEOTECHNICAL FEASIBILITY DESIGN

TITLE: TAILINGS STORAGE FACILITY
 ULTIMATE DAM SECTIONS
 MAIN DAM

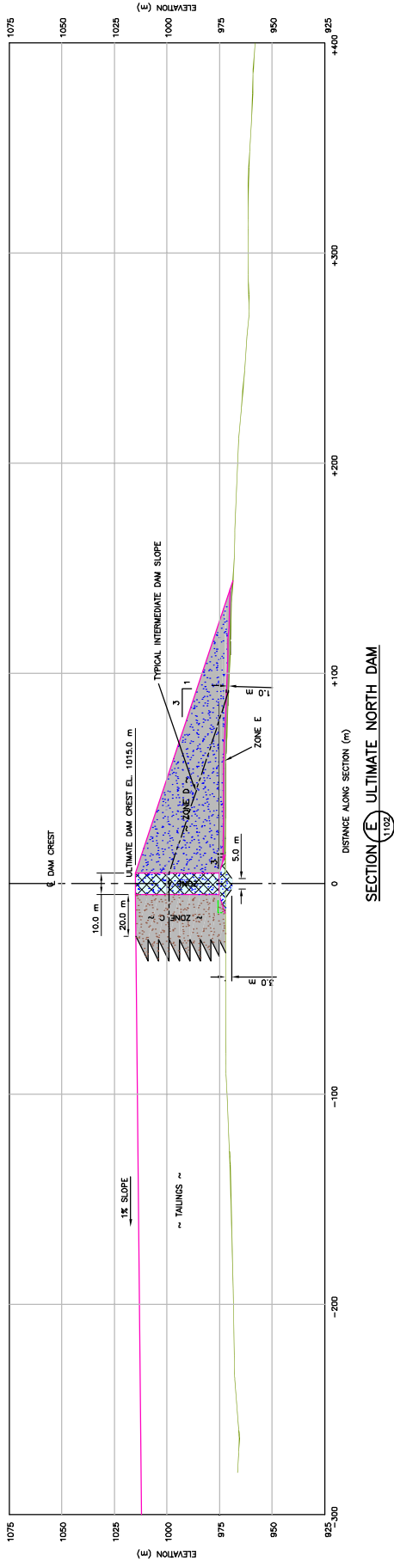
SCALE: AS SHOWN PROJECT No. M09382_A01 SHEET No. D-1103

CLIENT:

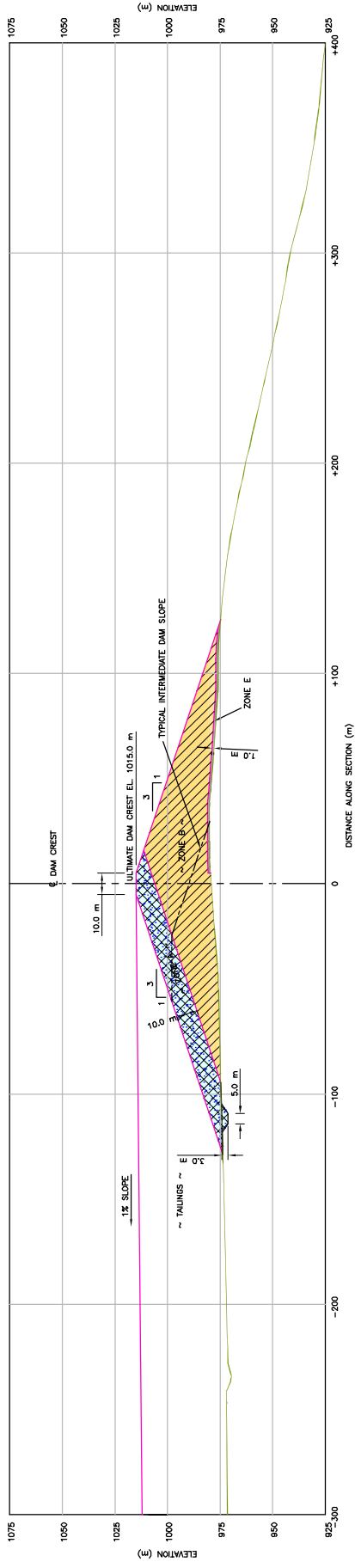
DATE: 14:59:7
 SCALE: 1=1000
 DATE: 12/5/2008

Drawing File: M:\09382\A01 - Morrison Copper Gold\400 Design\410 Drawings\FEASIBILITY REPORT_Oct 2008\0100516v+D110316v+D(P)PAT.dwg (cehnhj)

CANCEL PRINTS BEHIND PREVIOUS EDITION



SECTION **E** ULTIMATE NORTH DAM



SECTION **F** ULTIMATE WEST DAM

- LEGEND**
- ZONE A - LOW PERMEABILITY FILL CORE
 - ZONE B - RANDOM FILL
 - ZONE C - UPSTREAM CYCLONED SAND
 - ZONE D - DOWNSTREAM CYCLONED SAND
 - ZONE E - SAND AND GRAVEL BLANKET DRAIN

NOT FOR CONSTRUCTION

SCALE 0 50 m

CLIENT

pbm
Klohn Crippen Berger

PROJECT
MORRISON COPPER/GOLD PROJECT
GEOTECHNICAL FEASIBILITY DESIGN

TITLE
TAILINGS STORAGE FACILITY
ULTIMATE DAM SECTIONS
NORTH AND WEST DAMS

NO.	DATE	ISSUE / REASON	DESIGNER	CHECKER	APP'D
C	DEC 6, 2008	ISSUED WITH GEOTECHNICAL FEASIBILITY STUDY REPORT			
B	NOV. 17, 2008	DRAFT FOR CLIENT REVIEW	FL	TU	TU
A	MAY 16, 2008	DRAFT FOR CLIENT REVIEW			

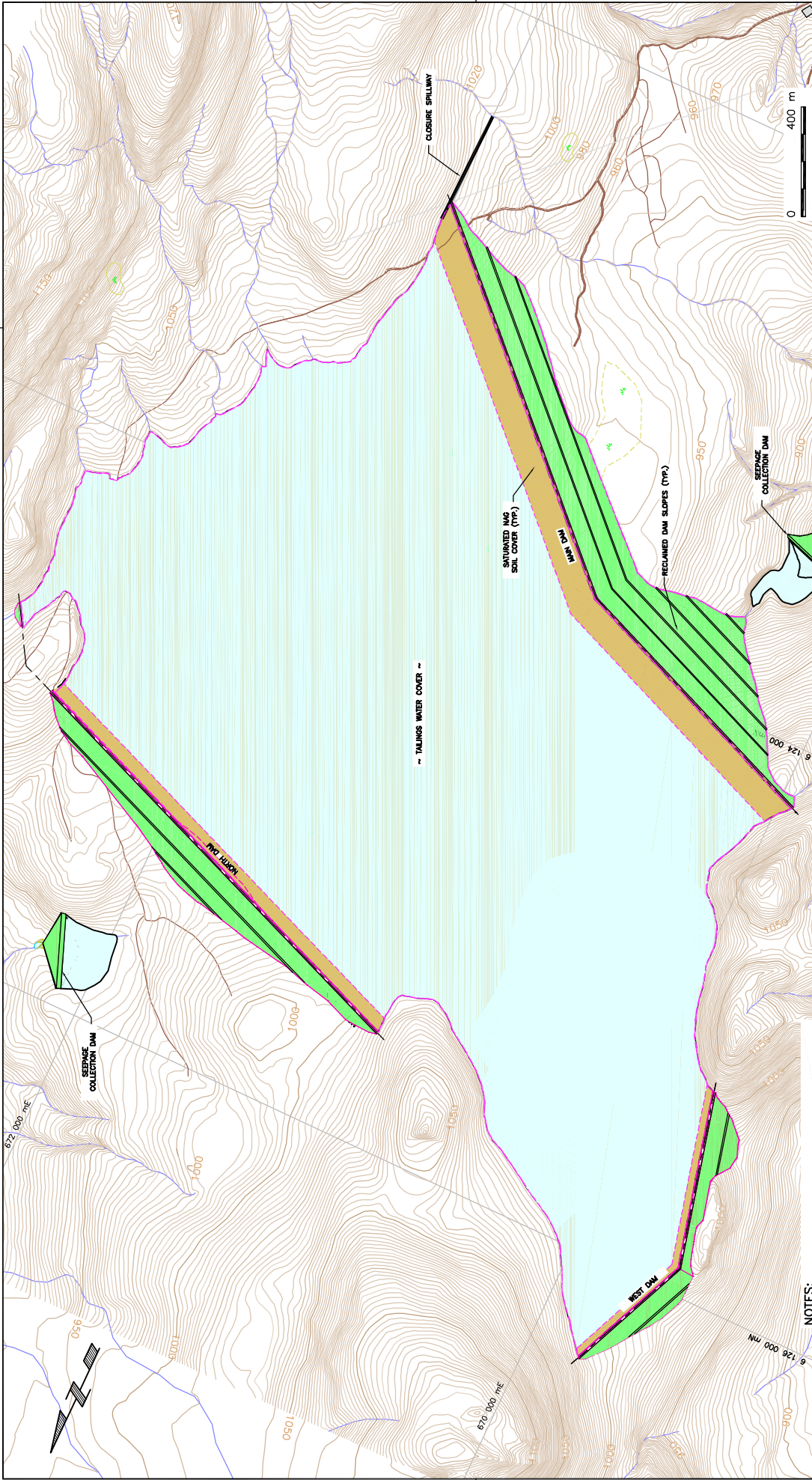
DRAWING NO.	REFERENCE DRAWING

DATE 12/5/2008
SCALE 1=100
DRAWING FILE: M:\03282\A01 - Morrison Copper Gold\400 Design\FEASIBILITY\REPORT_Oct 2008\01001016+D1101016+D(P)PART.dwg (cehinn)

DATE 14:59:7

SCALE AS SHOWN PROJECT No. M03382 A01 SHEET No. D-1104

CANCEL PRINTS BEHIND PREVIOUS EDITION



PROJECT: MORRISON COPPER/GOLD PROJECT
 TITLE: GEOTECHNICAL FEASIBILITY DESIGN
 SCALE: AS SHOWN
 PROJECT No.: M03382_A01
 SHEET No.: D-1105
 REV: C
 CANCEL PRINTS BEARING PREVIOUS REVISION

CLIENT: **pbm**
Klohn Crippen Berger

DATE: 17/05/2008
 DRAWN BY: [Name]
 CHECKED BY: [Name]
 APPROVED BY: [Name]

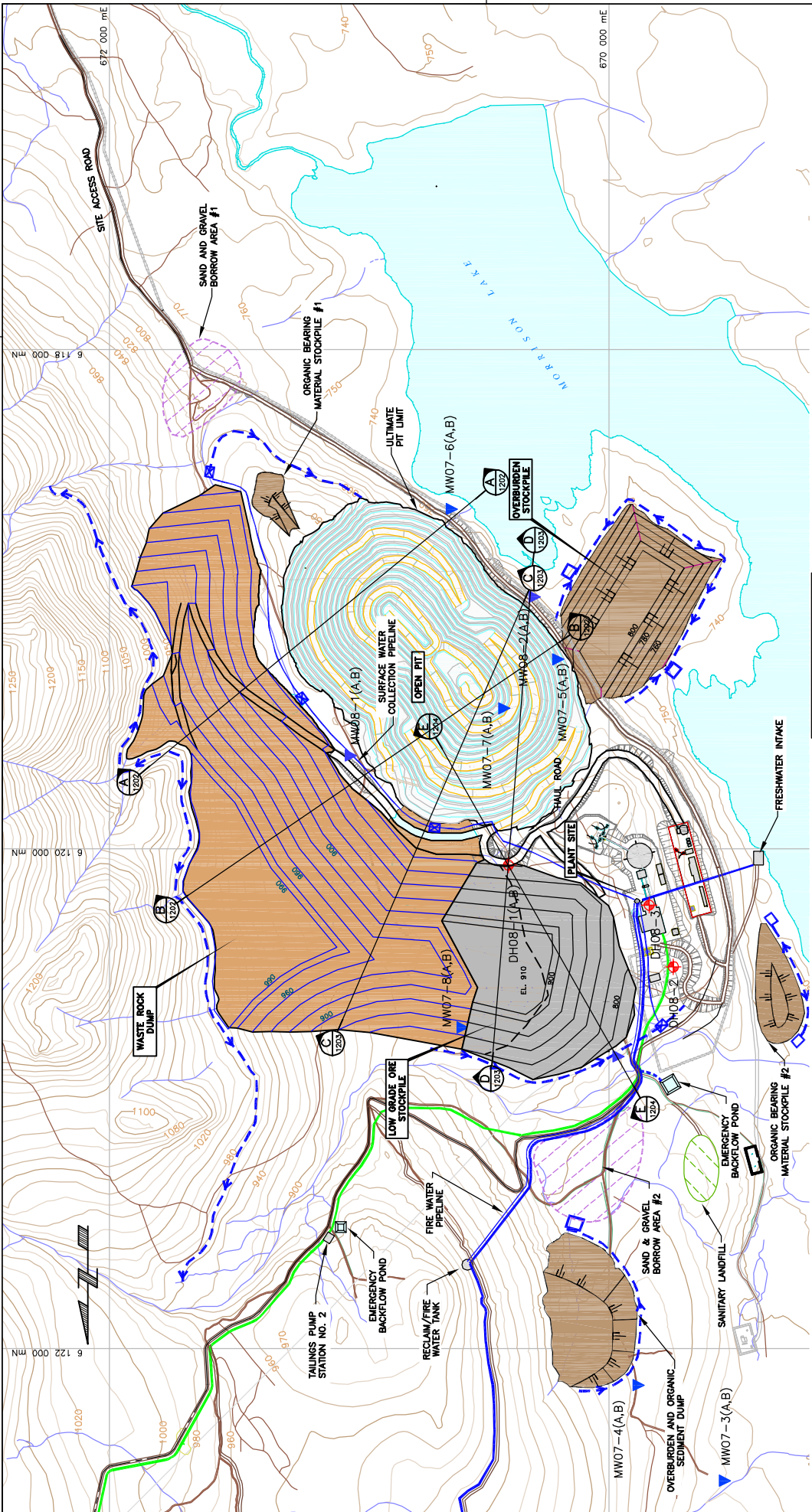
NOT FOR CONSTRUCTION

NO.	DATE	ISSUE / REASON	ISSUED BY	DATE	REVISION	APP'D
C	DEC. 6, 2008	ISSUED WITH GEOTECHNICAL FEASIBILITY STUDY REPORT				
B	DEC. 3, 2008	DRAFT FOR CLIENT REVIEW	TD		TU	
A	MAY 16, 2008	DRAFT FOR CLIENT REVIEW	PL		TU	

NOTES:
 1. PHOTOGRAPHY & 2. CONTOUR INTERVAL, REPRODUCED FROM AERIAL PHOTOGRAPHY FLOWN IN SEP. 2008 AND COMPILED BY EAGLE MAPPING LTD.
 2. DATUM IN UTM COORDS, ZONE 9.

REFERENCE DRAWING

DRAWING NO.	DATE	ISSUE / REASON	ISSUED BY	DATE	REVISION	APP'D



LEGEND

- TAILINGS LINE
- WATER PIPELINE
- DITCH
- SITE ACCESS ROAD
- HAUL ROAD
- SEDIMENT POND

REFERENCE DRAWING

- MW07-3(A,B) TALKING LINE
- MW08-3(A,B) RESCAN MONITORING WELL
- DH08-1(A,B) DRILL HOLES (2008)
- ☐ PUMPING SUMP

NOTES:

1. TOPOGRAPHY IS 10 m CONTOUR INTERVAL, PRODUCED FROM AERIAL PHOTOGRAPHY FLOWN IN SEP. 2006 AND COMPILED BY EAGLE MAPPING LTD. DATUM IN UTM NAD83, ZONE 9.
2. PLANT SITE LAYOUT PROVIDED BY WARDROP (NOV. 4, 2008).
3. ISSUED WITH GEOTECHNICAL FEASIBILITY STUDY REPORT

NO.	DATE	ISSUE / REVISION	DRWN	CHKD	ESCHD	APP'D
D	DEC 6, 2008	ISSUED WITH GEOTECHNICAL FEASIBILITY STUDY REPORT				
C	DEC 4, 2008	ADDRESSES PBM COMMENTS				
B	NOV 19, 2008	DRAFT FOR CLIENT REVIEW				
A	APR 18, 2008	ISSUED FOR CLIENT REVIEW				

NOT FOR CONSTRUCTION

CLIENT

PROJECT
MORRISON COPPER/GOLD PROJECT
GEOTECHNICAL FEASIBILITY DESIGN

TITLE
WASTE DUMPS AND TEMPORARY STOCKPILES
END OF OPEN PIT

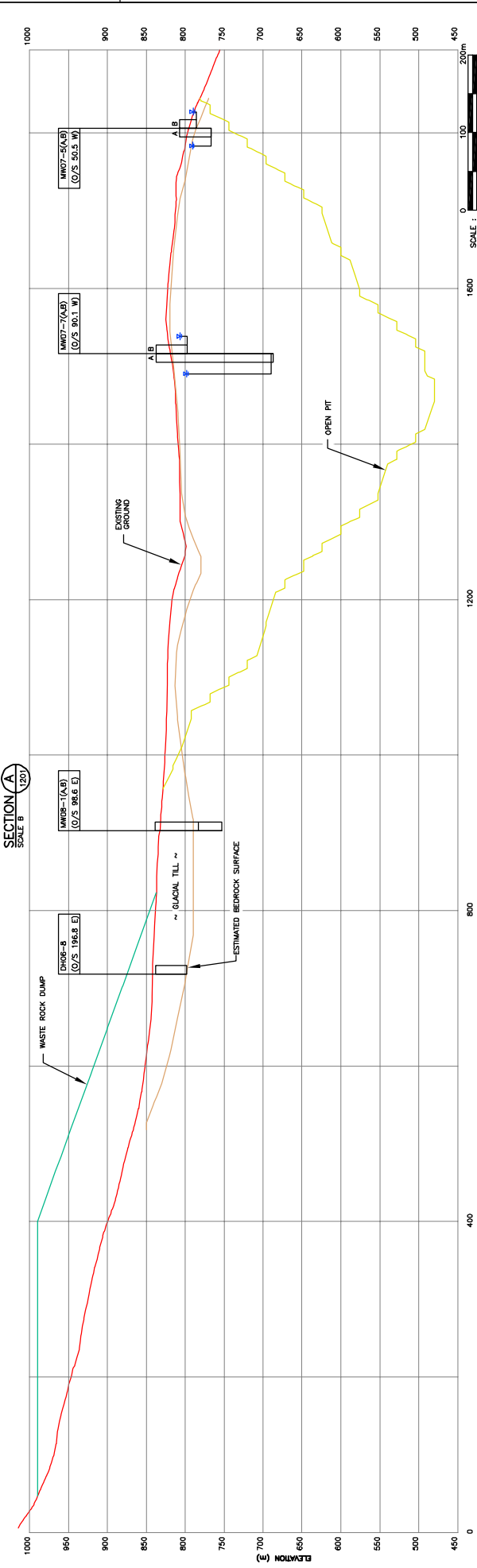
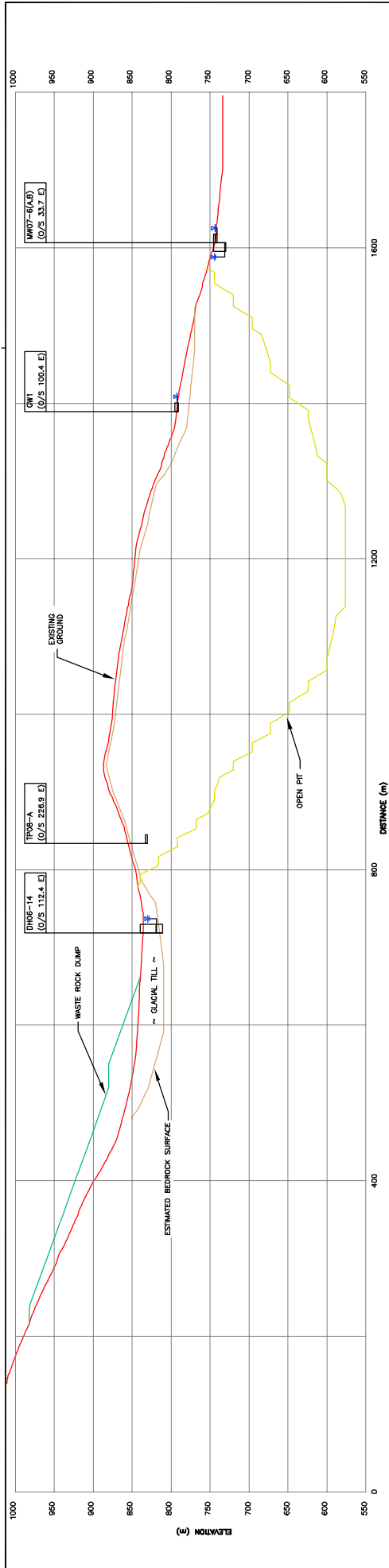
SCALE
AS SHOWN

PROJECT NO.
M093382_A01

DATE
D-1201

REV
D

CANCEL PRINTS BEARING PREVIOUS REVISION



NOTES:
FOR DETAILED SOIL STRATIGRAPHY LOSS, SEE FEASIBILITY REPORT APPENDIX II, III AND IV.

NOT FOR CONSTRUCTION

PROJECT: MORRISON COPPER/GOLD PROJECT
TITLE: WASTE DUMPS AND TEMPORARY STOCKPILES CROSS-SECTIONS A AND B

CLIENT:

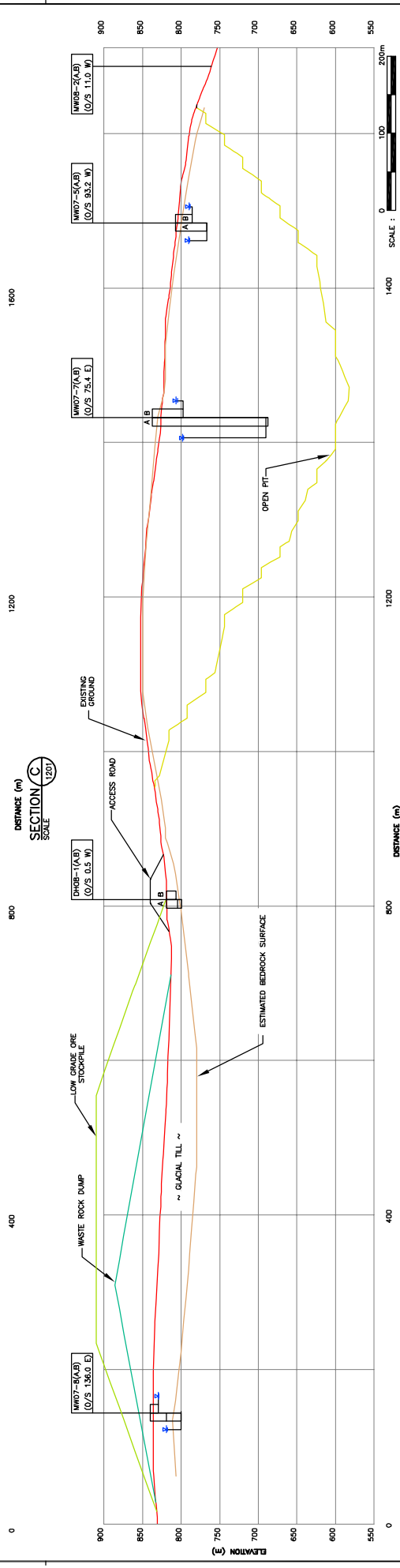
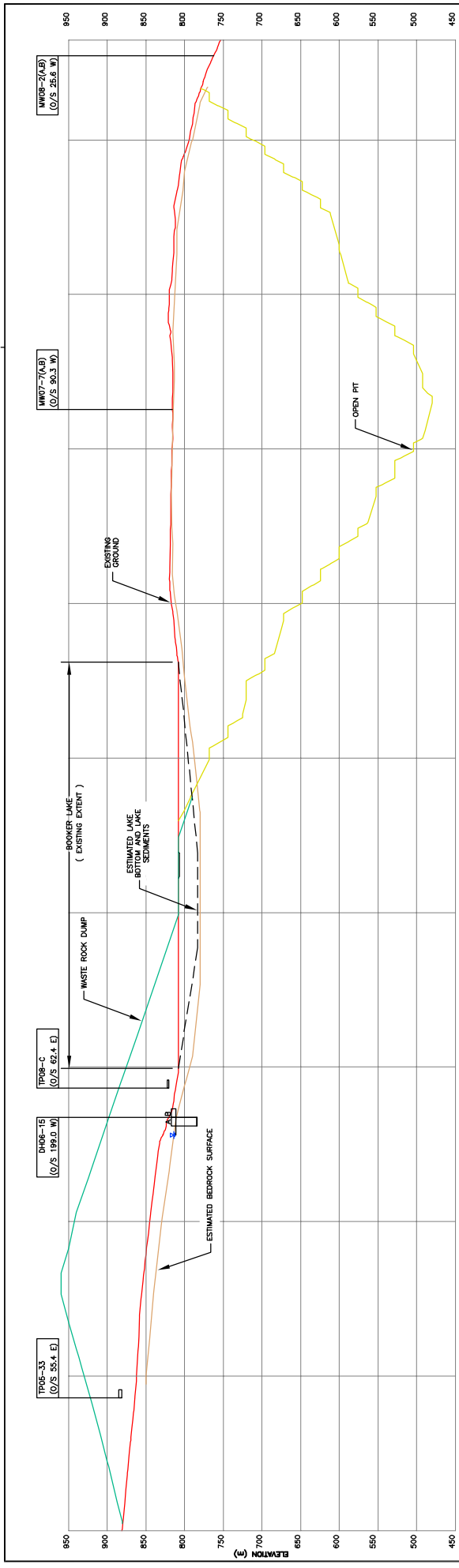
NO.	DATE	ISSUE / REASON	OWNER	CHK'D	DESIGN	APP'D
C	DEC 6, 2008	ISSUED WITH GEOTECHNICAL FEASIBILITY STUDY REPORT	TD		TU	
B	DEC 4, 2008	ADDRESSES PBM COMMENTS	PL		TU	
A	NOV. 24, 2008	ISSUED FOR CLIENT REVIEW				

SCALE: AS SHOWN
PROJECT No.: M09382 A01
REV. No.: D-1202

DATE: 10-17-11
Scale: 1"=300'
Drawn By: M09382A01 - Morrison Copper Gold
Checked By: B09382A01 - Morrison Copper Gold

REVISIONS:

DATE: 10-17-11
Scale: 1"=300'
Drawn By: M09382A01 - Morrison Copper Gold
Checked By: B09382A01 - Morrison Copper Gold



NOTES:
FOR DETAILED SOIL STRATIGRAPHY LOGS,
SEE FEASIBILITY REPORT APPENDIX II, III AND IV.

DATE: 11/25/2008
SCALE: 1"=300'
DRAWING FILE: M:\03282A01 - Morrison Copper Gold\400 Design\400 Design\FEASIBILITY REPORT_Oct 2008\01021614+e.01101+2+5.D1201+2.0130HD\PDAT1.dwg (14)

NO.	DATE	ISSUE / REASON	ISSUED BY	DESIGNED BY	CHECKED BY	APPROVED BY
C	DEC 6, 2008	ISSUED WITH GEOTECHNICAL FEASIBILITY STUDY REPORT	TD	TJ		
B	DEC 4, 2008	ADDRESSES PERM COMMENTS	FL	TJ		
A	NOV. 24, 2008	ISSUED FOR CLIENT REVIEW				

REFERENCE DRAWING

PROJECT
MORRISON COPPER/GOLD PROJECT
GEOTECHNICAL FEASIBILITY DESIGN

TITLE
WASTE DUMP AND TEMPORARY STOCKPILES
CROSS-SECTIONS C AND D

CLIENT

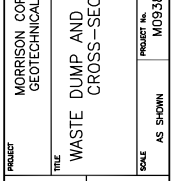
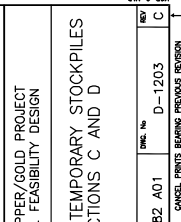
SCALE
AS SHOWN

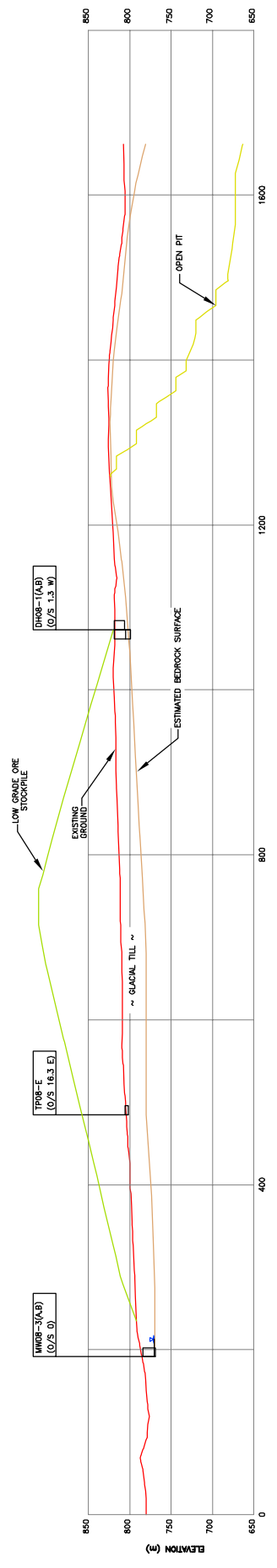
PROJECT NO.
M03382_A01

DWG. NO.
D-1203

REV
C

CANCEL PRINTS BEYOND PREVIOUS REVISION





DISTANCE (m)
SECTION E
 SCALE 1:200

NOT FOR CONSTRUCTION

SCALE: 0 100 200m

PROJECT: MORRISON COPPER/GOLD PROJECT
 GEOTECHNICAL FEASIBILITY DESIGN
 TITLE: WASTE DUMP AND TEMPORARY STOCKPILES
 CROSS-SECTION E

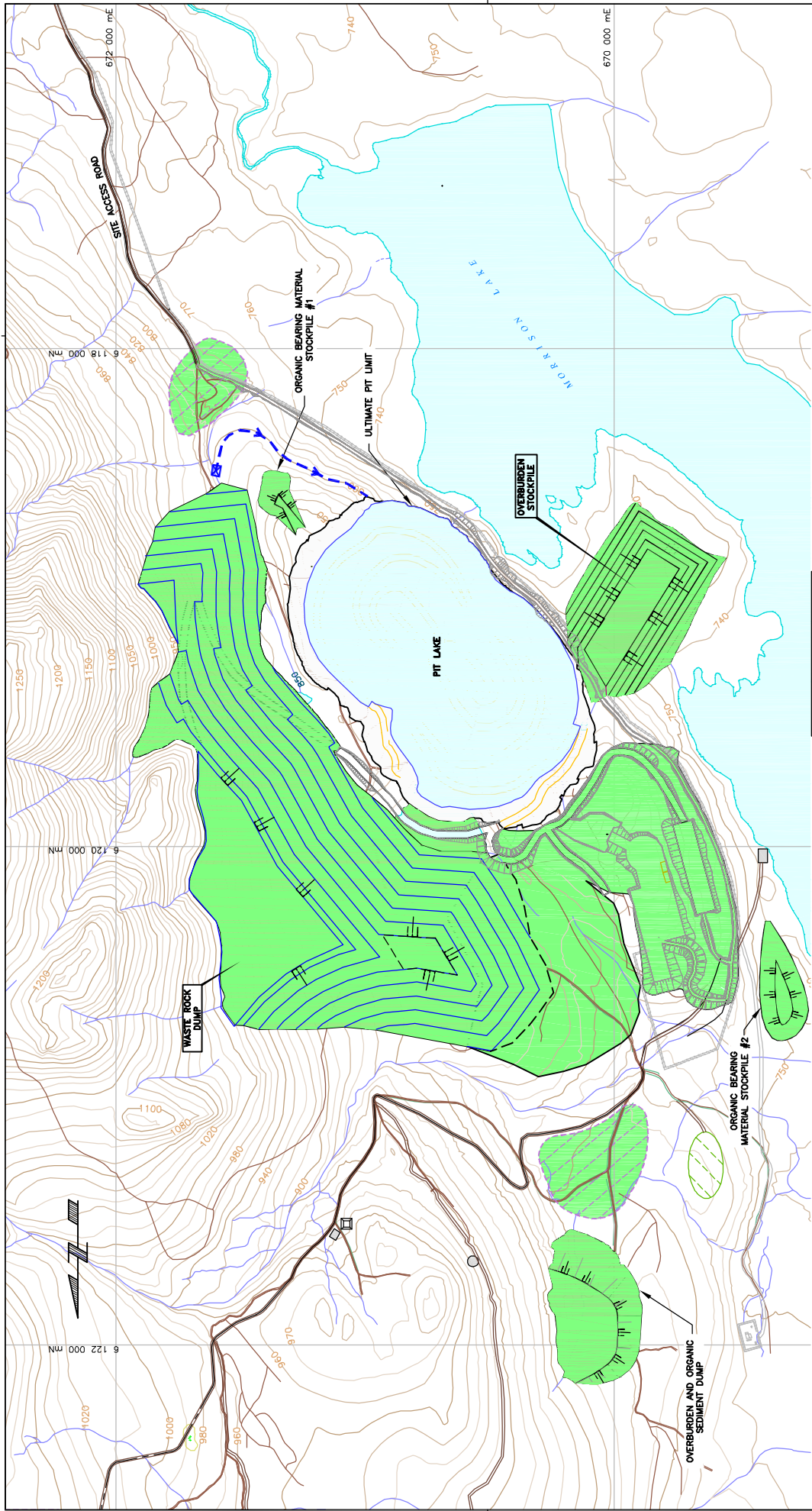
CLIENT:

SCALE: AS SHOWN PROJECT No. M03282A01 SHE No. D-1204 REV. C

CANCEL PRINTS BEARING PREVIOUS REVISION

NOTES:
 FOR DETAILED SOIL STRATIGRAPHY LOGS,
 SEE FEASIBILITY REPORT APPENDIX II, III AND IV.

NO.	DATE	ISSUE / REASON	ISSUED BY	CHK'D BY	APP'D BY
C	DEC 4, 2008	ISSUED WITH GEOTECHNICAL FEASIBILITY STUDY REPORT			
B	DEC 4, 2008	ADDRESSES PBM COMMENTS	TD		TJ
A	NOV 24, 2008	ISSUED FOR CLIENT REVIEW	PL		TJ



SCALE: 0 400 m

NOT FOR CONSTRUCTION

PROJECT: MORRISON COPPER/GOLD PROJECT
 TITLE: GEOTECHNICAL FEASIBILITY DESIGN



CLIENT: [QR CODE]

TITLE: WASTE DUMPS AND TEMPORARY STOCKPILES
 CLOSURE PLAN

SCALE: AS SHOWN PROJECT No. M09382_A01 SHEET No. D-1205

DATE: 17/5/2008
 DRAWING NO. REFERENCE DRAWING

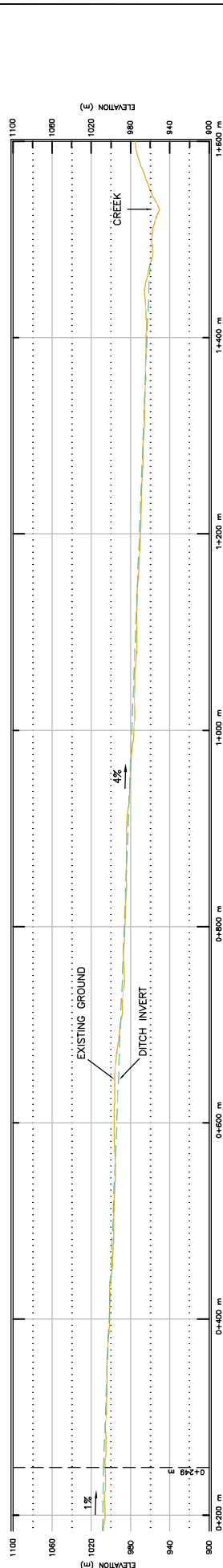
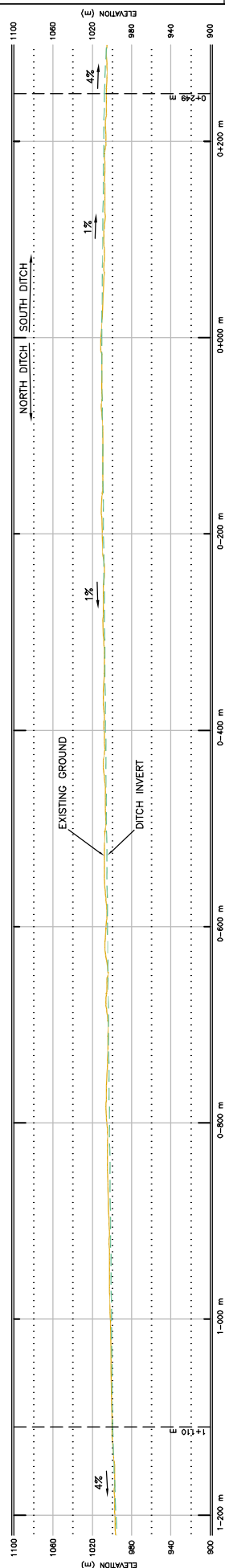
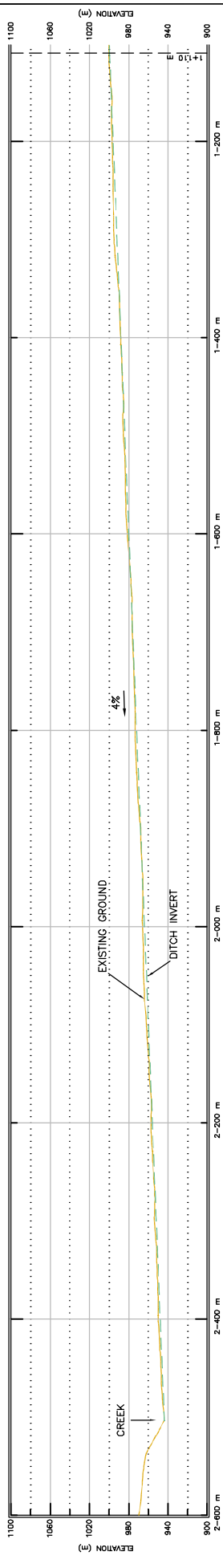
DATE: 10-17-1
 SCALE: 1=100
 DRAWING FILE: M:\09382A01 - Morrison Copper Gold\400 Design\400 Design\FEASIBILITY REPORT\Oct 2008\0102012+2+5-D1201+2-1090D(PD)AT1.dwg (14)

- NOTES:**
1. TOPOGRAPHY IS 10 m CONTOUR INTERVAL, PRODUCED FROM AERIAL PHOTOGRAPHY FLOWN IN SEP. 2008 AND COMPILED BY EAGLE MAPPING LTD.
 2. FINAL LIMIT LINES ARE THE PROPERTY OF MORRISON COPPER/GOLD PROJECT.
 3. PLANT SITE LAYOUT PROVIDED BY WARDROP (NOV. 4, 2008).

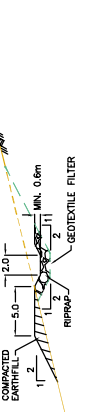
NO.	DATE	ISSUE / REASON	DESIGNER	CHECKED	APPROVED
C	DEC 6, 2008	ISSUED WITH GEOTECHNICAL FEASIBILITY STUDY REPORT			
B	NOV. 24, 2008	DRAFT FOR CLIENT REVIEW	TD		TU
A	MAY 16, 2008	DRAFT FOR CLIENT REVIEW	PL		

- LEGEND**
- RECLAIMED SURFACES
 - DITCH

CANCEL PRINTS BEARING PREVIOUS REVISION



PROFILE



TYPICAL CROSS SECTION
SCALE: NONE

NOTES:

1. SEE DRAWING D-1201 FOR LOCATION OF DITCH.
2. DITCH PROFILE SHOWS AVERAGE GRADE. ACTUAL GRADE MAY VARY, UP TO MAXIMUM 5%, TO SUITE TOPOGRAPHY.

NOT FOR CONSTRUCTION

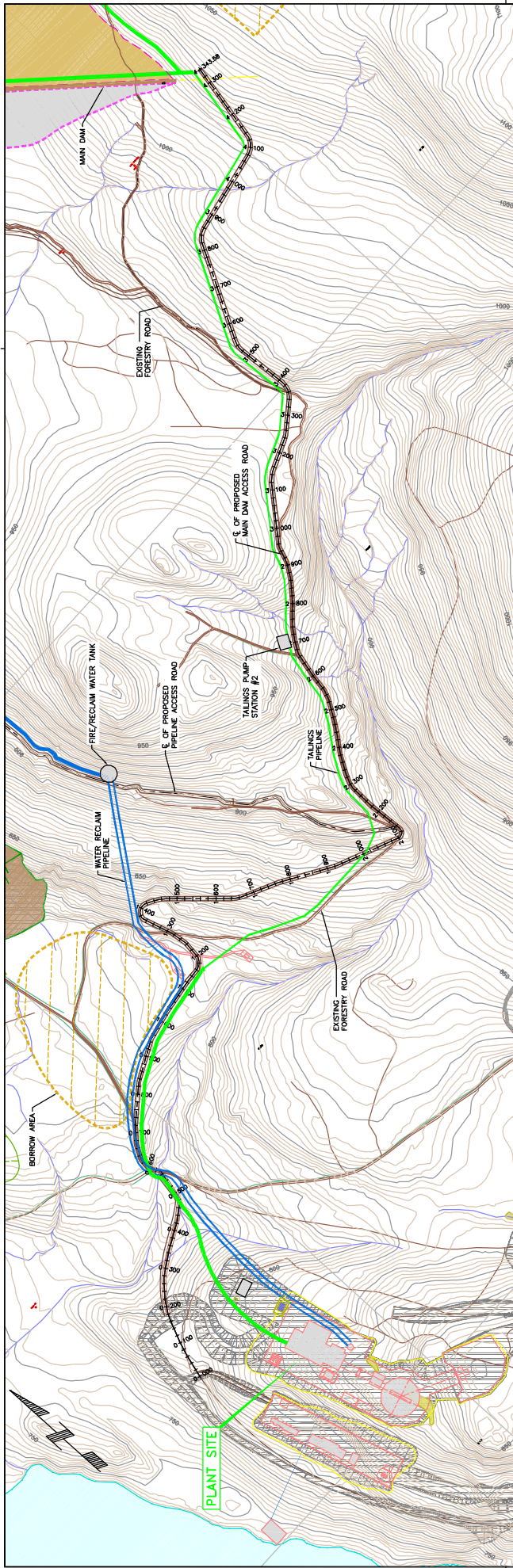
PROJECT: MORRISON COPPER GOLD PROJECT
 TITLE: WASTE DUMPS AND TEMPORARY STOCKPILES DIVERSION DITCH PROFILE

CLIENT:

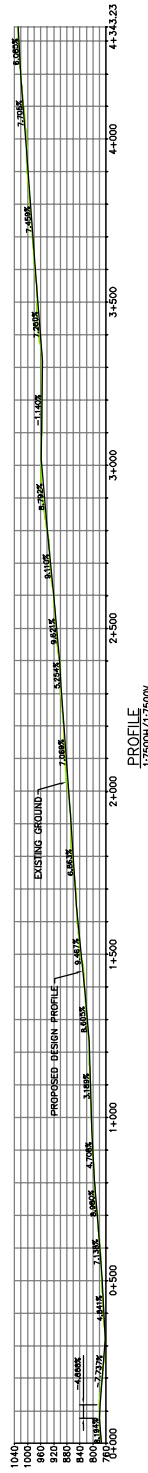
PROJECT No. M09382_A01
 SCALE: AS SHOWN
 SHEET No. D-1206
 REV: B

DATE: 12/5/2008
 DRAWING FILE: M:\09382\01 - Morrison Copper Gold\400 Design\FEASIBILITY REPORT\01-1201\8-B.dwg (p06)

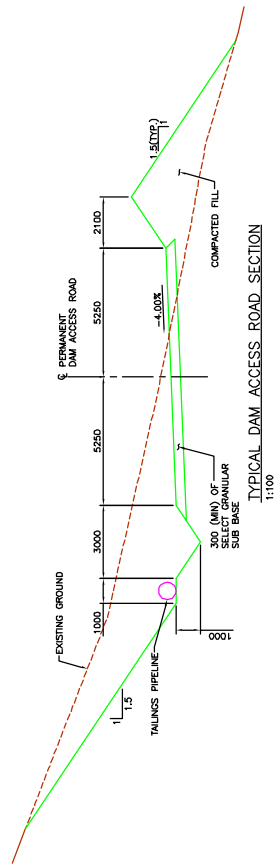
DATE	ISSUE / REASON	ISSUED BY	DESIGNED BY	CHECKED BY	APPROVED BY
DEC. 5, 2008	ISSUED WITH GEOTECHNICAL FEASIBILITY STUDY REPORT	PL			TU
NOV. 24, 2008	DRAWN FOR CLIENT REVIEW	TD			ESBH



PLAN
1:5000



PROFILE
1:7500H/1:7500V





TYPICAL DAM ACCESS ROAD SECTION
1:100

NOTES:

1. TOPOGRAPHY IS 10 m CONTOUR INTERVAL, PRODUCED FROM AERIAL PHOTOGRAPHY FLUIM IN SEP, 2008 AND COMPILED BY EAGLE MAPPING LTD
2. DATUM IN UTM NAUR3, ZONE 9.
3. PLANT SITE LAYOUT PROVIDED BY HARGROOP (NOV 4, 2008).
4. ALIGNMENT AND PROFILE ARE APPROXIMATE, SUBJECT TO DETAIL DESIGN.
5. CUT AND FILLS NOT SHOWN.
6. STATIONING AND ELEVATIONS ARE IN METRES. SECTION DIMENSIONS ARE IN MILLIMETRES UNLESS NOTED OTHERWISE.

NOT FOR CONSTRUCTION

CLIENT

PROJECT
MORRISON COPPER/GOLD PROJECT
GEOTECHNICAL FEASIBILITY DESIGN

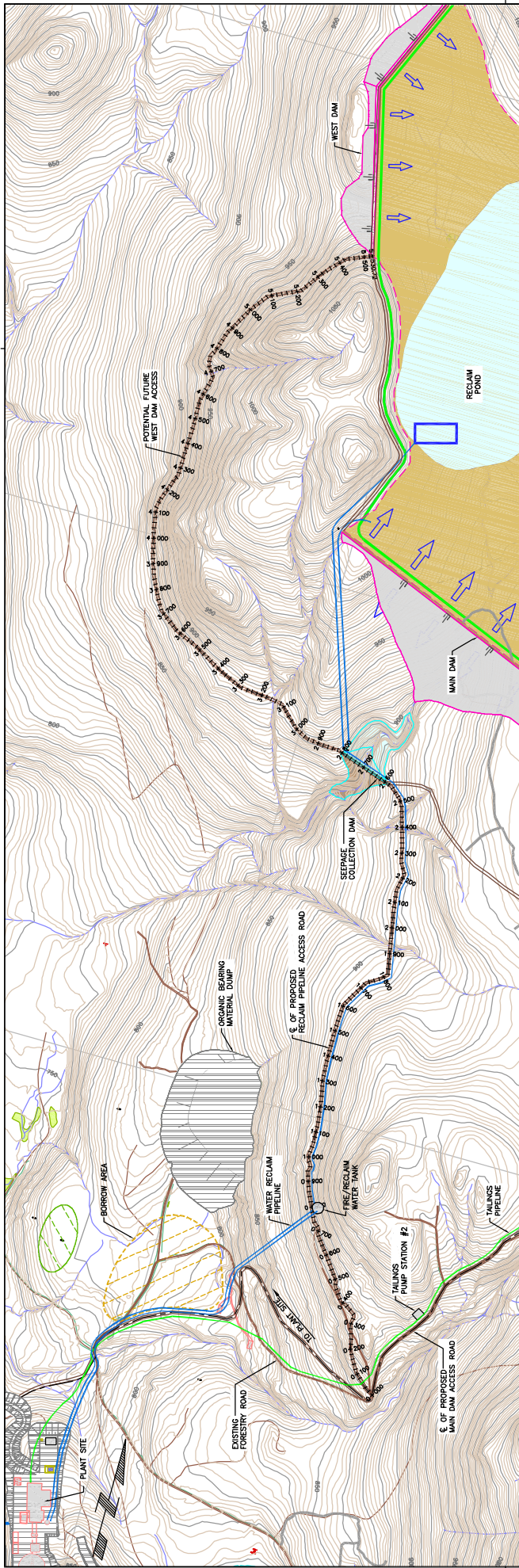
TITLE
MAIN DAM ACCESS ROAD
PLAN, PROFILE AND SECTION

ISSUE / REVISION	DATE	NO.	BY	CHKD	DESIGN	APPD.
B	DEC 6, 2008					
A	NOV 26, 2008					

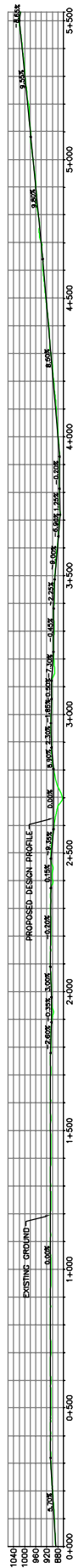
ISSUED WITH GEOTECHNICAL FEASIBILITY STUDY REPORT
DRAWN FOR CLIENT REVIEW

SCALE	AS SHOWN	PROJECT No.	M09382_A01	DWG No.	D-1401	REV	B
-------	----------	-------------	------------	---------	--------	-----	---

CANCEL PRINTS BEARING PREVIOUS REVISION



PLAN
1:7500






PROFILE
1:7500H/1:7500V

NOTES:

1. TOPOGRAPHY IS 10 m CONTOUR INTERVAL, PRODUCED FROM AERIAL PHOTOGRAPHY FLOWN IN SEP. 2006 AND COMPILED BY EAGLE MAPPING LTD
2. DATUM IN UTM MGRS, ZONE 9.
3. PLANT SITE LAYOUT PROVIDED BY WARDROP (NOV 4, 2008).
4. ALIGNMENT AND PROFILE ARE APPROXIMATE, SUBJECT TO DETAIL DESIGN.
5. CUT AND FILLS NOT SHOWN.
6. FOR EVERY 500m ALONG THE ROAD LENGTH, THE TRAVEL WIDTH WILL BE INCREASED TO 10m FOR A LENGTH OF APPROXIMATELY 50m TO PROVIDE PULLOUT LANES.
7. ELEVATIONS AND STATIONING ARE IN METRES. SECTION DIMENSIONS ARE IN MILLIMETRES UNLESS NOTED OTHERWISE.

NOT FOR CONSTRUCTION

		MORRISON COPPER/GOLD PROJECT GEOTECHNICAL FEASIBILITY DESIGN	
		RECLAIM PIPELINE ACCESS ROAD PLAN, PROFILE AND SECTION	
	CLIENT	PROJECT No. M09382_A01	SHEET No. D-1402
SCALE AS SHOWN	PROJECT No. M09382_A01	SHEET No. D-1402	REV. B

CANCEL PRINTS BEARING PREVIOUS REVISION

NO.	DATE	ISSUE / REASON	ISSUED WITH GEOTECHNICAL FEASIBILITY STUDY REPORT	DATE	NO.	ISSUED FOR CLIENT REVIEW
B	DEC 6, 2008		ISSUED WITH GEOTECHNICAL FEASIBILITY STUDY REPORT			
A	NOV 26, 2008		DRAWN FOR CLIENT REVIEW			

REVISION NO.	DATE	NO.	REASON