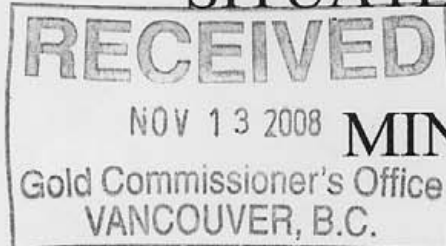


ASSESSMENT REPORT FOR 2008
DRILLING REPORT OF THE CHINA
KNOWS 3-565612 MINERAL CLAIMS

SITUATED IN THE OMENICA



MINING DIVISION

Gold Commissioner's Office
VANCOUVER, B.C.

LATITUDE: 54 25' 47.5" N

LONGITUDE: 126 27' 23.3" W

OWNED BY: JOHN WESLEY MOLL

WORK DONE BY: JOHN WESLEY
MOLL, MARY JEAN MOLL, RICHARD
WESLEY MOLL

REPORT BY: JOHN WESLEY MOLL

BC GEOL. SURV. BRANCH
ASSESSMENT REPORT

30,292

TABLE OF CONTENTS

INTRODUCTION

Location and access.....	pg. 1
Claim history.....	pg. 1
Status.....	pg. 1
Purpose.....	pg. 2
Procedure.....	pg. 2

CONCLUSION.....	pg. 2
-----------------	-------

DRILL LOG Hole # 1.....	pg.6
-------------------------	------

DRILL LOG Hole # 2.....	pg.7
-------------------------	------

MIKE AZIZ QUALIFICATIONS.....	pg.8
-------------------------------	------

ASSAYS.....	pg.9&10
-------------	---------

STATEMENT OF EXPENDITURES.....	pg. 11
--------------------------------	--------

AUTHORS QUALIFICATIONS.....	pg. 12
-----------------------------	--------

ASSAYERS CANADA INVOICE.....	pg. 13
------------------------------	--------

CROSS SECTION.....	pg. 14
--------------------	--------

MAPS

Regional property location map.....	pg. 3
-------------------------------------	-------

China Knows claim map.....	pg. 4
----------------------------	-------

Diamond drill hole location map.....	pg. 5
--------------------------------------	-------

Location and Access: Located by travelling East of Houston along Highway 16 until reaching McKilligan Road. Travelling South on McKilligan Road for 1 KM until reaching Aiken Road. Follow Aiken Road for 4.9 Km. Then turn left and travel for 4.3 Km. You are then on the China Knows mineral claims.

Claim History: The China Knows claim group has experienced exploration from the early 1970's to the present day. Exploration includes soil sampling, prospecting, trenching, I.P. surveys and 3 diamond drill holes. Previous work report numbers are: 1974-259, 1977-E194, 1983-442, 1987-c303, 1988-C169. Previous Assessment Reports are: 5228, 11504, 15408, 15489, and 17154.

Status: The current work was performed on China Knows 3 (565612). China Knows (553561), China Knows 2 (554933), China Knows 3 (555415), China Knows 4 (584880) are all also owned by John Wesley Moll of Houston BC. The work was performed by John Wesley Moll, Mary Jean Moll and Richard Wesley Moll. All reside in Houston BC. The drill log was performed by Mike Aziz of Houston BC.

With the acceptance of this assessment report the mineral claims will be in good standing as follows:

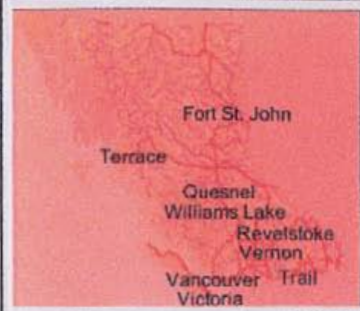
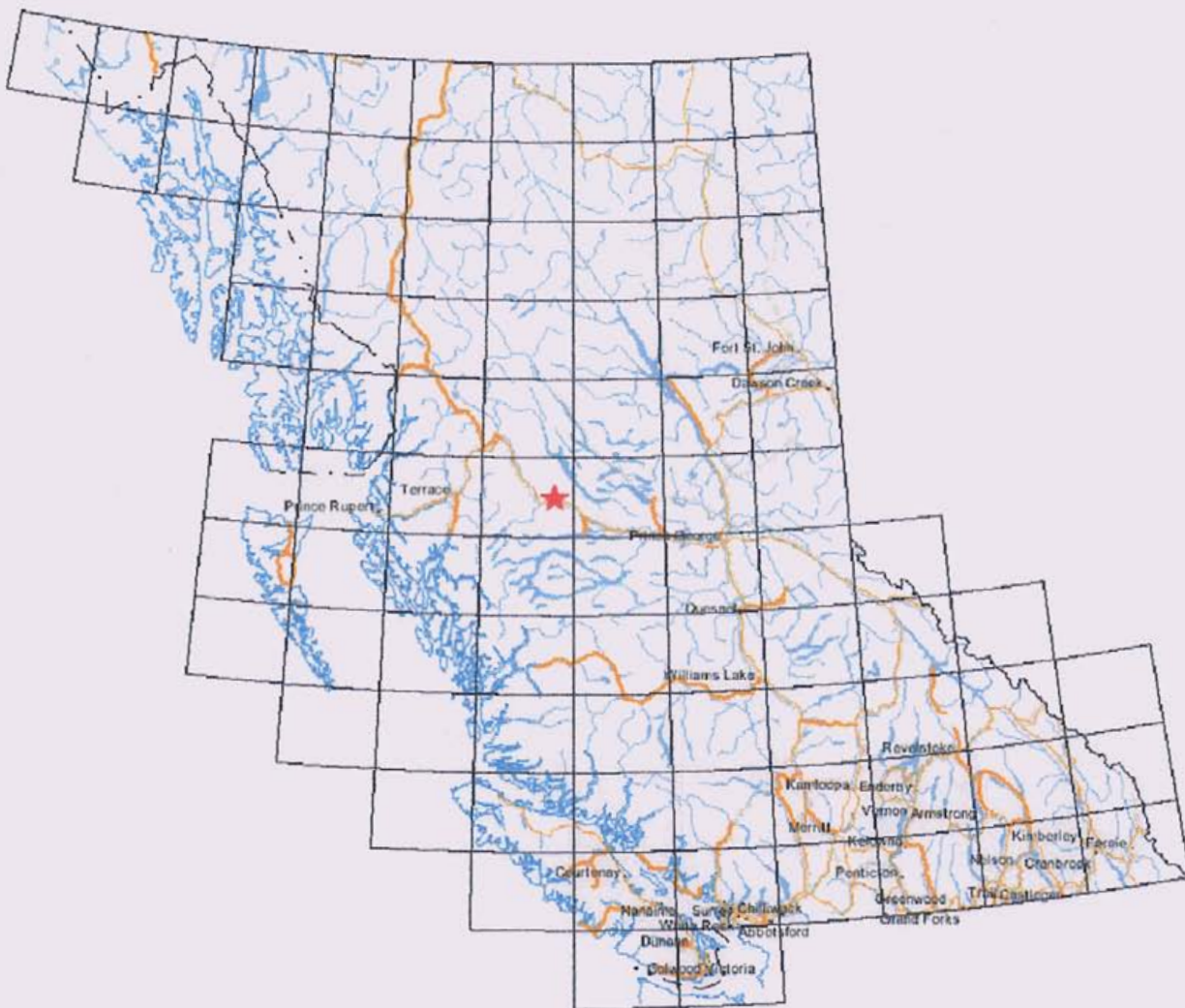
China Knows--553561	March 30, 2011
China Knows 2-554933	March 30, 2011
China Knows 3-555415	March 30, 2011
China Knows 3-565612	March 30, 2011
China Knows 4-584880	March 30, 2011

PURPOSE: To test the newly discovered andesite outcrop to see if it had any minerals of interest and to have a look at the rock at depth.

PROCEDURE: An X-ray drill was hauled to the outcrop and a 90 hole was collared in the bedrock. The hole was drilled for 22 metres and another hole was drilled to depth of 3.4 metres to try and see if we could distinguish the dip of the rock units. The core was taken to Mike Aziz to be logged. Three sections were assayed.

CONCLUSION AND RECOMMENDATIONS: Confirmed that there is economic copper, silver and gold at depth and should be followed up with other drill holes and geophysics.

China Knows Location Map



Legend

- Provincial Boundary (1:6M)
- Boundary (International)
- Boundary (Interprovincial)
- NTS Grid
- Transportation - Lines (1:6M)
 - Road - Trunk
 - Road - Main
 - Rail Line
- Water - Lines (1:6M)
 - River/Stream - Definite
 - Lake - Definite
 - Island - Definite
 - Coastline - Definite
- Water - Polygons (1:6M)
 - River/Stream - Definite
 - Lake - Definite
- Major Cities

0 175 350 km.

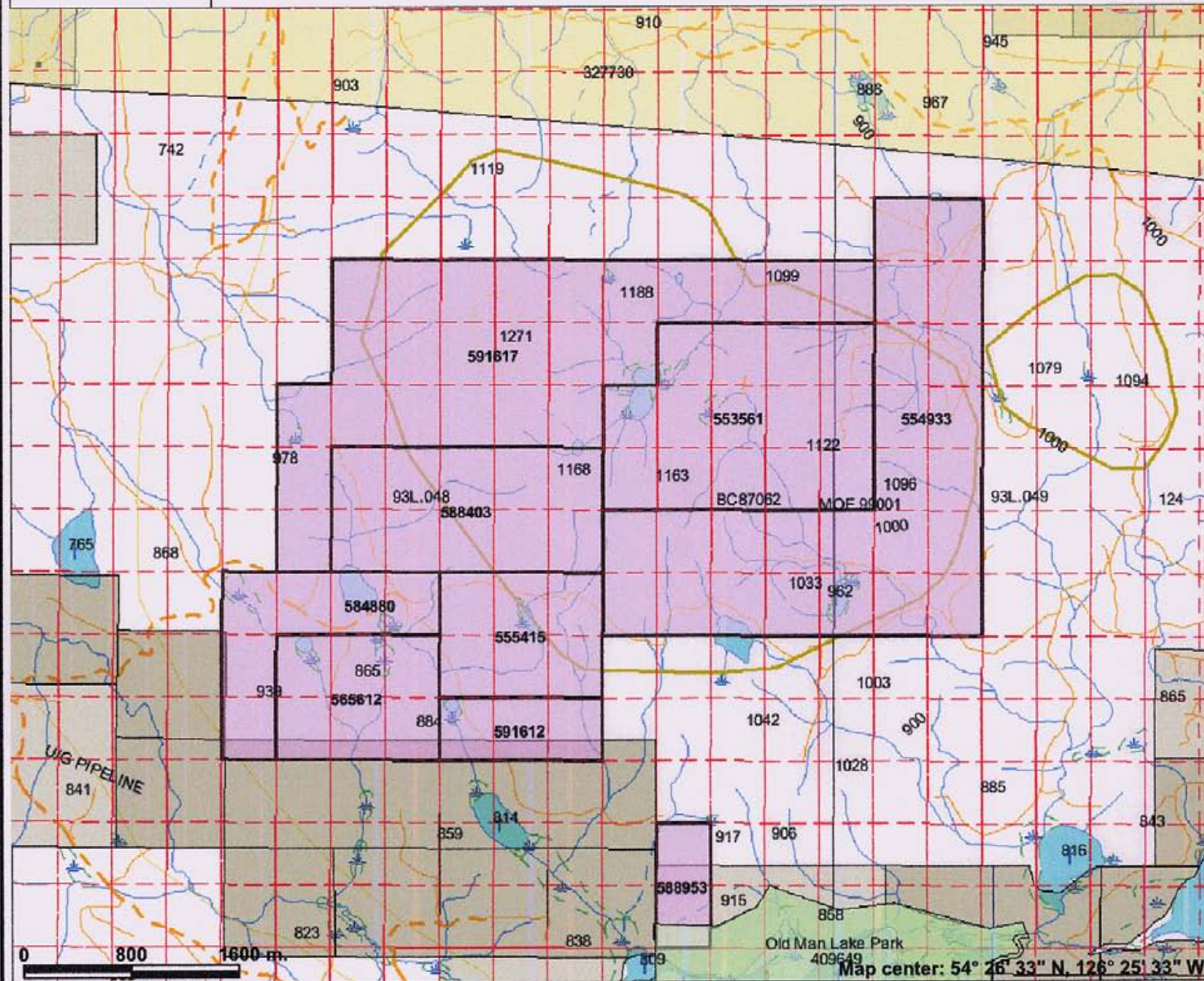
Map center: 54°28' N, 126°20' W



Scale: 1:10,099,728

This map is a user generated static output from an Internet mapping site and is for general reference only. Data layers that appear on this map may or may not be accurate, current, or otherwise reliable. THIS MAP IS NOT TO BE USED FOR NAVIGATION.

China Knows



Legend

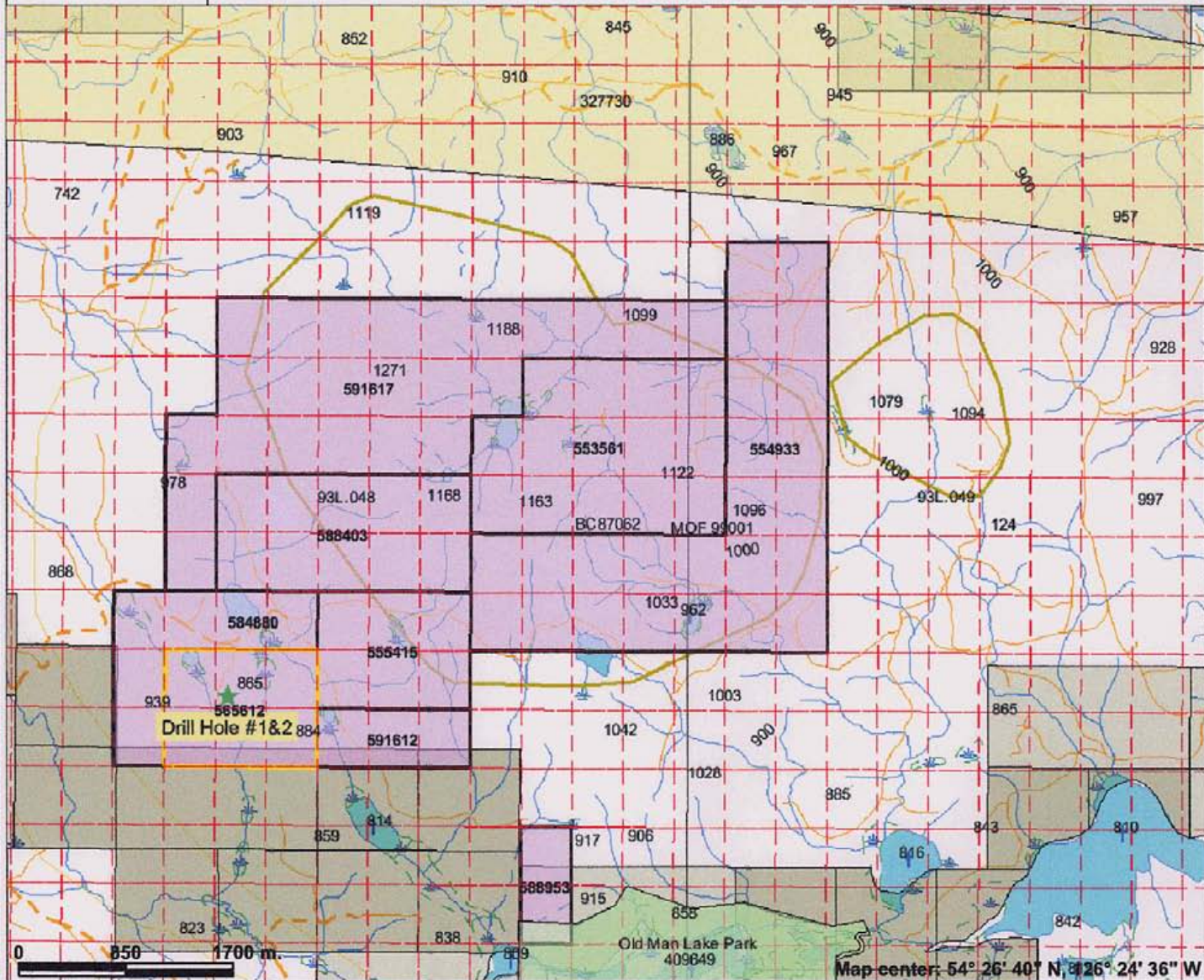
- Indian Reserves
- National Parks
- Parks
- MTO Grid (MTO)
- Mineral Tenure (current)
- Mineral Claim
- Mineral Lease
- Mineral Reserves (current)**
- Placer Claim Designation
- Placer Lease Designation
- No Staking Reserve
- Conditional Reserve
- Release Required Reserve
- Surface Restriction
- Recreation Area
- Others
- Survey Parcels
- BCGS Grid
- Contours (1:250K)
- Contour - Index
- Contour - Intermediate
- Area of Exclusion
- Area of Indefinite Contours
- Transportation - Points (TRIM)**
- Helipad
- Transportation - Lines (TRIM)**
- Airfield
- Airport
- Airstrip
- Airport Abandoned
- Ferry Route
- Road (Gravel Undivided) - 1 Lane
- Road (Gravel Undivided) - 2 Lanes

Scale: 1:44,689

This map is a user generated static output from an Internet mapping site and is for general reference only. Data layers that appear on this map may or may not be accurate, current, or otherwise reliable. THIS MAP IS NOT TO BE USED FOR NAVIGATION.

Map center: 54° 26' 33" N, 126° 25' 33" W

China Knows DDH Location 2008



Legend

- Indian Reserves
- National Parks
- Parks
- Mineral Titles Grid (LRDW)
- Mineral Tenures (Mineral - LRDW)
- Mineral Claim
- Mineral Lease
- Reserves (Mineral - LRDW Sites)**
- Placer Claim Designation
- Placer Lease Designation
- No Staking Reserve
- Conditional Reserve
- Release Required Reserve
- Surface Restriction
- Recreation Area
- Others
- Mining Division (MTO)
- Survey Parcels
- BCGS Grid
- Contours (1:250K)**
- Contour - Index
- Contour - Intermediate
- Area of Exclusion
- Area of Indefinite Contours
- Transportation - Points (TRIM)**
- Helipad
- Transportation - Lines (TRIM)**
- Airfield
- Airport
- Airstrip
- Airport Abandoned
- Ferry Route
- Road (Gravel Unimproved) 4 Lane



Map center: 54° 26' 40" N, 126° 24' 36" W



Scale: 1:47,748

This map is a user generated static output from an Internet mapping site and is for general reference only. Data layers that appear on this map may or may not be accurate, current, or otherwise reliable. THIS MAP IS NOT TO BE USED FOR NAVIGATION.

GPS Nothing	0664986
GPS Easting	6034330
GPS Elevation	855m

Azimuth	Inclin	Notes
Collar		90
EOH		22 m

China Knows Hole #1 2008

#	Start	Finish	Lithology	Comments
L001	0.0 Meters	1 Meter	Mafic Volcanic Flow (Andesitic)	Diamond Drill Log Logged By Mike Aziz - Start Date August 27,2008/ Broken up core fine grained with altered plagioclase crystals (subhedral to euhedral xtal shape). Dark grey to dark green. Weakly to moderately fractured with irregular orientation, some fine veinlets with siderite infill. Finely disseminated Chalcopyrite, approximately 2% with local blebs up to 5%-associated with minor Bornite around Chalcopyrite. Fine carbonate veinlets near bottom of interval. Very fine grained magnetite throughout, approximately 4%. All core has moderate magnetic signature.
L002	1 Meter	7 Meters	Mafic Volcanic Flow (Andesitic)	Continuous core, dark green to dark grey, fine grained. Chloritic alteration is moderate, minor chlorite blebs. Increasing veinlets&veins of Calcite. End of unit marked by strong Carbonate vein and lighter color (brown tannish color). Contact sharp 70' to core axis. Trace reddish brown veinlets crosscut core-probably Hematite-seems to be associated with carbonate veinlets at least along same line of weakness. Chalcopyrite found trace<1% throughout unit but in areas with more intense carbonate veinlets found Chalcopyrite and Bornite up to 2%(limited areas) 4.5 meters. Quartz vein with trace bornite 6.5 meters with Chalcopyrite and Epidote along border of quartz vein. Very fine grained magnetite throughout core, approximately 3-4%.
L003	7 Meters	7.5 Meters	Intrusive Dike?	Interval defined by stronger alteration marked by tannish brown color-altered rock hard with moderate sericitic alteration. Subhedral plagioclase crystals-moderate to fine grain size. Calcite veins near top of interval&quartz vein at bottom of interval. Moderately fractured with main set @30' to core axis-minor crosscutting of main set with trace sections off minor offset. Minor to trace veinlets of specular hematite(metallic to reddish brown). Minor Chlorite blebs(altered plug xtals) No magnetite in unit. No Chalcopyrite observed in this unit. Upper contact sharp, 70' to core axis -bottom contact broken up with core.
L004	7.5 Meters	9.5 Meters	Mafic Volcanic Flow(Andesitic)	Dark green to dark brownish green with subhedral to euhedral plagioclase crystals, plagioclase crystals slightly altered with reddish color in some sections. Quartz and Carbonate(Calcite) veinlets & minor veins. Moderate to minor Chlorite alteration-Blebs. Trace Chalcopyrite blebs throughout unit with minor areas of increased Chalcopyrite and Hematite associated with Carbonate veins/veinlets. Chalcopyrite veinlets with Bornite and Specular Hematite found at 8.6 meters to 9.3 meters. Some areas up to 4% Chalcopyrite locally.Sections with plagioclase crystals with random orientation. Very fine grained magnetite throughout interval, up to 3-4%.
L005	9.5 Meters	11 Meters	Quartz/Carbonate Vein	Interval marked by Quartz/Carbonate(calcite)vein & associated veinlets, brecciated mafic host rock within vein structure. No magnetite detected but specular hematite as disseminated and fracture controlled 1-2%. Fine chalcopyrite associated with specular hematite-chalcopyrite found with rims of specular hematite-chalcopyrite 1-2%. Bottom of interval close to edge of vein, there are more country rock fragments with strong sericitic alteration. Chalcopyrite less than 1%, minor specular hematite. Sharp lower contact @ 60' to core axis.
L006	11 Meters	14 Meters	Mafic Volcanic Flow (Andesitic)	Medium brown to dark grey/green. Fine grained matrix with moderate sized subhedral plagioclase crystals with random orientation. Top .3 meters of interval has stronger alteration associated with quartz vein of L005 that gives section a lighter brown color, this section also has no detectable magnetite which is present in the rest of the interval. Remainder of the interval is dark green/grey with plagioclase crystals-moderate potassic alteration of the crystals. Magnetite in darker section approximately 1-2% fine grained. Trace specular hematite veinlets. Sections of carbonate veins/veinlets, trace carbonate veinlets altered to clay/carbonate. No visible chalcopyrite in unit.
L007	14 meters	16 Meters	Quartz Vein with Minor Carbonate and Country Rock Fragments	Quartz veins with carbonate mixed in sections to give low fizz value. Large fragments of country rock (mafic volcanic flow) with quartz vein - brecciated fragments with quartz veinlets & infill throughout with alteration to epidote close to quartz veins. No magnetite detected through unit. Trace <1% specular hematite and trace <1% chalcopyrite associated with specular hematite. Quartz at top of unit showed no sulphides/hematite. Bottom of unit showed increased mineralization but still trace. Minor gouge/clay alteration along fractures.
L008	16 Meters	17 Meters	Mafic Volcanic Flow (Andesitic)	Dark green to dark brown/green. Fine grained matrix with minor plagioclase crystals. Plagioclase crystals show potassic alteration(moderate) and chloritic alteration locally. Quartz veinlets & veins up to 0.5 cm. across and @ 30' to core axis. Fine grained magnetite throughout unit 2-3%. Trace 1% blebs of chalcopyrite, some with rims of specular hematite. Minor specular hematite veinlets. Sharp contact with lower unit at roughly 50'.
L009	17 Meters	22 Meters	Mafic Volcanic Flow (Andesitic)	Dark green/grey. Fine grained with chloritic clusters and minor subhedral plagioclase crystals. Minor potassic alteration of plagioclase crystals. Chloritic altered clusters more dominant than in other units-entire unit shows chlorite alteration. Thin calcite veinlets along fractures @ 50' to core axis-moderately fractured. Very fine grained magnetite throughout unit-moderate magnetic signature with 2-3% magnetite disseminated. Trace specular hematite-sometimes associated with carbonate veinlets. No visible chalcopyrite within unit.

End Of Hole-@22 Meters

GPS Northing	0664986		Azimuth	Inclin	Notes
GPS Easting	6034330		340		
GPS Elevation	855m	Collar			55
		EOH			3.5 m

China Knows Hole #2 2008

Diamond Drill Log

Logged By Mike Aziz - Start Date August 28,2008 Finished August 28, 2008

Comments

#	Start	Finish	Lithology	Comments
L001	0.0 Meters	2.3 Meters	Mafic Volcanic Flow (Andesitic)	Dark grey/green, fine grained matrix with minor small subhedral plagioclase crystals. Moderate carbonate veins (2mm across @ 55° to core axis) & veinlets (calcite) Strong fizz. Fine grained magnetite throughout unit giving moderate to weak magnetic signatures. 1 to 3% fine grained magnetite. Minor localized specular hematite with reddish brown to metallic color - associated frequently with calcite veinlets. Trace chalcopyrite blebs in areas of specular hematite <1%
L002	2.3 Meters	2.6 Meters	Quartz Vein and Alteration	Unit has quartz veins and veinlets throughout with strong fracturing - minor calcite veinlets. Color is light brown to tan grading to dark green/grey at lower boundary of unit. Increased specular hematite composition 2-3%. No magnetite observed and no magnetic signature. No chalcopyrite observed.
L003	2.6 Meters	3.4 Meters	Mafic Volcanic Flow (Andesitic)	Dark grey/green, fine grained matrix-no visible plagioclase crystals. Moderately fractured with carbonate(calcite) infill. Moderate magnetic signature - fine grained magnetite, 1-2%. Minor specular hematite, trace specular hematite veinlets, also as blebs. Seems associated with carbonate veinlets.Minor quartz veinlets within zones of carbonate veinlets. No visible chalcopyrite within unit.

End Of Hole 3.4 Meters

AUTHOR'S QUALIFICATIONS

I, Michael L. Aziz, do hereby certify that:

1. I am a geoscientist residing in Houston, British Columbia.
2. I am a graduate of the University of Western Ontario, in London Ontario, obtaining my Honours Bachelor of Science in Geology in 1987.
3. I have been a practicing geoscientist continuously since 1987 in Ontario, Australia, and British Columbia.
4. The information contained in the drill logs is based on my personal observation of the drill core on August 27th and August 28th, 2008.
5. I have no interest in the China Knows property, either directly or indirectly, nor do I expect to receive any such interest.

Respectfully submitted,

A handwritten signature in black ink that reads "Mike Aziz". The signature is written in a cursive, slightly slanted style.

Michael L. Aziz, B. Sc.
Geoscientist

Wes Moll
 Attention: Wes Moll
 Project:
 Sample type: Rock

9 **Assayers Canada**
 8282 Sherbrooke St., Vancouver, B.C., V5X 4R6
 Tel: (604) 327-3436 Fax: (604) 327-3423

Report No : 8S0092RJ
 Date : Sep-10-08

Multi-Element ICP-AES Analysis
 Aqua Regia Digestion

Sample Number	Ag ppm	Al %	As ppm	Ba ppm	Be ppm	Bi ppm	Ca %	Cd ppm	Co ppm	Cr ppm	Cu ppm	Fe %	Hg ppm	K %	La ppm	Mg %	Mn ppm	Mo ppm	Na %	Ni ppm	P ppm	Pb ppm	S %	Sb ppm	Sc ppm	Sr ppm	Th ppm	Ti %	Tl ppm	U ppm	V ppm	W ppm	Zn ppm	Zr ppm
1-16251	10.8	1.44	13	1015	<0.5	<5	1.63	<1	53	38	2450	8.82	<1	0.07	<10	1.82	3608	<2	0.02	4	850	145	0.15	<5	21	26	<5	0.07	<10	<10	254	<10	344	9
1-16252	3.7	1.24	7	2686	<0.5	<5	2.37	<1	39	59	945	8.47	<1	0.09	<10	2.34	4288	<2	0.01	15	639	17	0.10	<5	28	57	<5	0.07	<10	12	228	<10	240	8
1-16253	15.7	0.62	356	1060	<0.5	7	2.62	6	97	108	3004	5.68	<1	0.05	<10	2.07	2925	2	<0.01	11	333	26	0.27	<5	11	112	<5	<0.01	<10	10	98	<10	196	3
1-16254	<0.2	2.04	<5	208	<0.5	5	0.31	<1	25	110	11	8.98	<1	0.02	<10	2.24	1260	<2	0.02	23	554	10	<0.01	<5	19	5	<5	0.01	<10	<10	224	<10	108	4
1-16255	<0.2	2.33	<5	251	<0.5	<5	0.36	<1	28	109	216	11.31	<1	0.04	<10	2.03	1390	<2	0.02	23	663	14	<0.01	<5	16	35	<5	0.08	<10	<10	241	<10	92	7

A .5 gm sample is digested with 5 ml 3:1 HCl/HNO3 at 95°C for 2 hours and diluted to 25ml.





Assayers Canada
8282 Sherbrooke St.
Vancouver, B.C.
V5X 4R6
Tel: (604) 327-3436
Fax: (604) 327-3423

Quality Assaying for over 25 Years

Assay Certificate

8S-0092-RA1

Company: **Wes Moll**
Project:
Attn: **Wes Moll**

Sep-10-08

We hereby certify the following assay of 5 rock samples submitted Aug-27-08

Sample Name	Au g/tonne	Au-Check g/tonne
1-16251	0.01	0.01
1-16252	<0.01	
1-16253	0.07	
1-16254	0.01	
1-16255	<0.01	
*0218	0.92	
*BLANK	<0.01	

Certified by _____

Statement of Expenditures

Diamond Drilling

26 metres @ \$90.00 per metre	\$2,340.00
Mobe and demobe 60 hours @ \$30.00 per hour	\$1,800.00
2 4x4 pickup trucks for 4 days @ \$120.00 each	\$880.00
Board for 13 man days @ \$35.00 per day	\$450.00
Copco Drill @ \$75.00 per day for 1 day	\$75.00
Supply pump \$35.00 per day for 2 days	\$70.00
Pump operator \$300.00 per day for 2 days	\$600.00
Logging core \$50.00 per hour for 3 hours	\$150.00
Splitting core \$30.00 per hour for 8 hours	\$240.00
Assay and handling	\$250.00
Report Preparation	<u>\$400.00</u>
Total	<u><u>\$7,255.00</u></u>

AUTHOR'S QUALIFICATIONS

I, John Wesley Moll, do hereby certify that

- (1) I am a prospector and reside at 855 Highway #16 West, Houston, B.C.
- (2) I have more than 40 years of prospecting experience.
- (3) I prepared this report.

Respectfully submitted,

A handwritten signature in black ink, appearing to read 'John Wesley Moll', written in a cursive style.

John Wesley Moll

Prospector



Assayers Canada

13

8282 Sherbrooke Street
Vancouver, B.C. V5X 4R6
Canada
Tel: 604.327-3436 Fax: 604.327-3423

Invoice

Date	Invoice #
13/09/2008	76143

Invoice To

Wes Moll
Box 1182
Houston, BC
V0I 1Z0

P.O. No.	Project	Terms	Due Date	File
		30 Net	13/10/2008	8S0092

Description	Qty	Rate	Amount	Tax
SAMPLE PREP: Rock	5	6.50	32.50T	G
ICP: Aqua Regia Digestion	5	8.00	40.00T	G
FIRE ASSAY: Au	5	13.50	67.50	E
GST On Sales		5.00%	3.63	

Subtotal		\$140.00
Sales Tax Total		\$3.63
Total		\$143.63
Payments/Credits		\$0.00
Balance Due		\$143.63

GST/HST No. 890013675

E-mail	Web Site
info@assayers.com	www.assayers.com

Cross Section Hole #1

