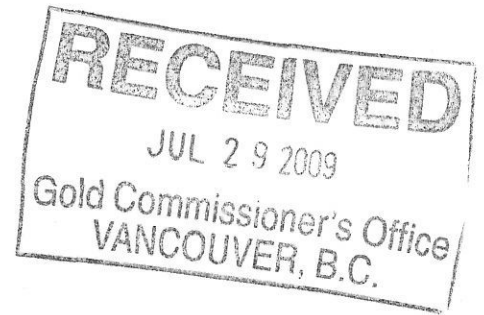


**BC Geological Survey
Assessment Report
30314**

**Report on
Geology and Geochemistry
Bear Property**



**Tenures: 523449, 523450, 541661, 541662, 541663, 541912, 541910, 541914,
541915, 542600, 542601, 552315, 552317, 552318, 564635, 564636, 564638,
564639, 564641, 564663, 564665, 565638, 565640, 565725, 565810, 567083,
567585, 567586 and 567676**

**Skeena Mining Division
British Columbia
Canada**

**BCTM: 104A012, 013
UTM: 461,200m E, 6,219,900m N
NAD 83, Zone 9
for:**

**Auramex Resource Corp.
750 Grand Boulevard
North Vancouver, B.C.
Canada V7L 3W4**

author:

David St. Clair Dunn, P.Geo.

November 20, 2008

**Amended by
Judie Whitby, CMA
27 July 2009**

**GEOLOGICAL SURVEY BRANCH
ASSESSMENT REPORT
30314**

**Report on
Geology and Prospecting
on the**

**Bear Property
Claims Worked: 564635, 565810**

**Skeena Mining Division
British Columbia
Canada**

**BCTM: 104A012, 013
UTM: 461,200 m E 6,219,900 m N
NAD 83, Zone 9**

for:

**Auramex Resource Corp.
750 Grand Boulevard
North Vancouver, B.C.
Canada V7L 3W4**

author:

**David St. Clair Dunn, P.Geo.
1154 Marine Drive
Gibsons, B.C.
Canada V0N 1V1**

November 30, 2008

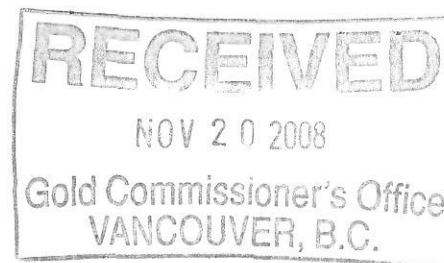


Table of Contents

INTRODUCTION	1
2008 GEOLOGICAL AND GEOCHEMICAL PROSPECTING	6
INTERPRETATIONS AND CONCLUSIONS.....	7
RECOMMENDATIONS.....	7
REFERENCES	8

List of Figures

Following Page

Figure 1: General and Claim Location Map	1
Figure 1A: Claim Boundaries Location Map	1
Figure 2: Regional Geology.....	4
Figure 3: Claim 565810.....	6
Figure 4: Claim 564635.....	6

List of Tables

Table 1: Contiguous Mineral Claims.....	2,3 & 4
Table 1: Contiguous Mineral Claims (Amended).....	(after page 1)

List of Appendices

- Appendix A: Statement of Costs
- Appendix B: List of Sample Locations and Descriptions
- Appendix C: Sample Results
- Appendix D: Author's Statements of Qualifications

Introduction

The author was commissioned by the Board of Directors of Auramex Resource Corp. (the company) to carry out a mineral exploration program on the Kelly Funk option, part of the Bear Property (the property) to determine if there are ore bodies present on the property. A first phase of property scale stream sediment sampling and prospecting was carried out on the property on the 4th and 5th of September, 2008 under the direct supervision of the author. The program was reduced from six days to two days because of an injury to the geological technician working on the project, J. Delaney. Mr. Delaney fell and ruptured his patella tendon necessitating an helicopter assisted medivac and an immediate return to Vancouver to undergo surgery. This greatly increased the proportion of travel costs in this program and reduced the duration of the program.

The property extends from immediately east of the Stewart airport, east across the Bear River and north up the Bear River and American Creek for 36 kilometres and east up the Bear River to a few kilometers east of Strohn Lake, a further 15 kilometres (Fig. 1 & 2). The property covers 13 small past producing mines and showings, including the Ruby Silver and Terminus.

The property can be accessed by road from Stewart. Highway 37A crosses the property for about 30 kilometres of its length and a mine access road that extends from highway 37A for eight kilometers up American Creek provide access to a large part of the property. More remote and higher areas of the property can be accessed by helicopter from Stewart, no more than a 20 minute trip in good weather.

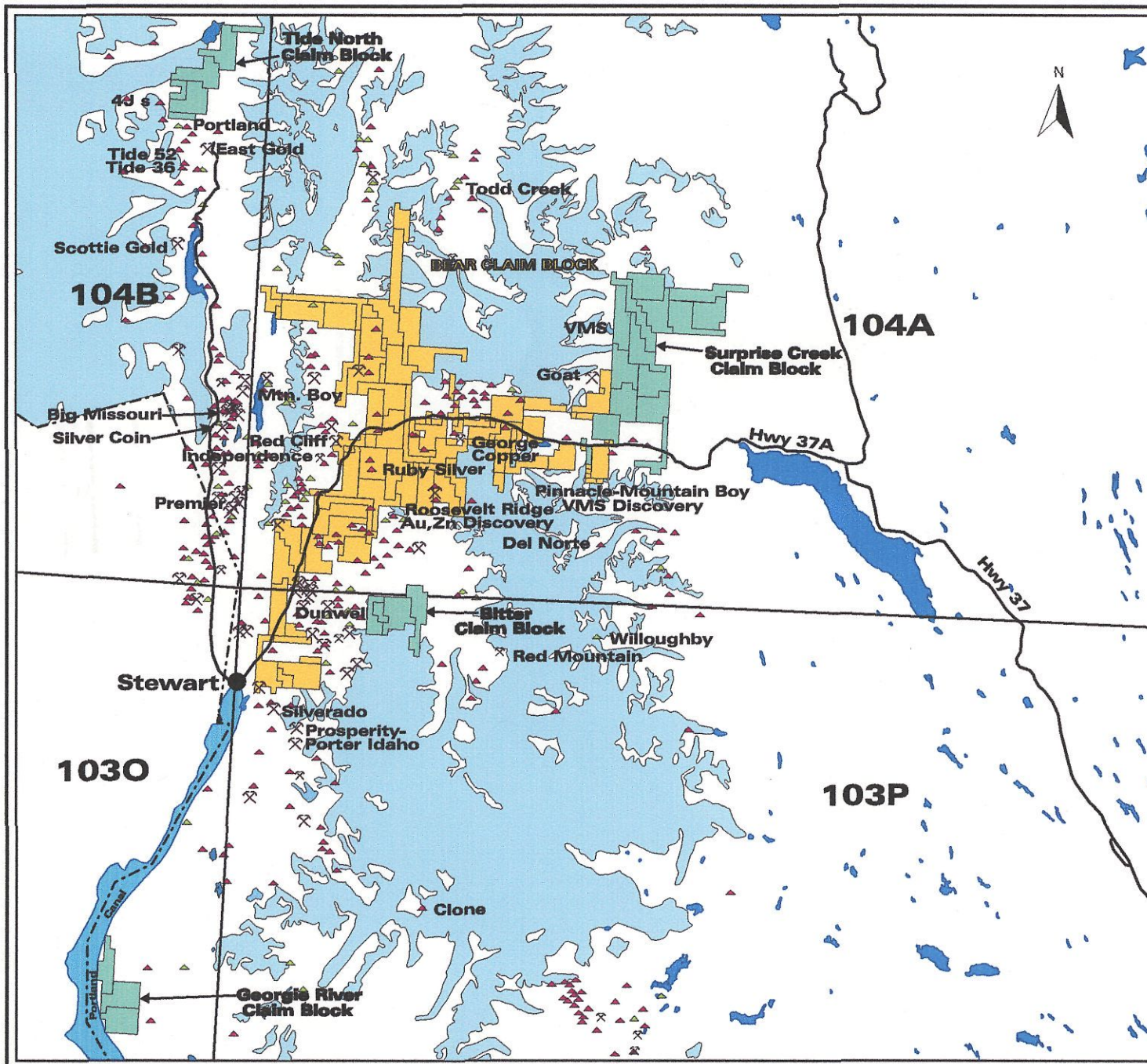
There is a bulk loading facility on year round ice free tidewater at Stewart. Stewart also has a paved air strip and all the facilities necessary to carry out mineral exploration and mine development. Paved road access to the rest of the province is possible via Highway 37A to Meziadin Junction, then Highway 37 to Kitwanga and Highway 16, which connects Prince George and Prince Rupert.

The 2008 geological and prospecting program on the property was carried out on two claims, 564635 and 565810, and involved the collection of 1 pan concentrate sample, 1 silt sample and 6 rock samples taken by a two person helicopter/truck supported crew (Figs 4&5). A significant anomaly was returned from one of the rock samples: 87601 (1157 ppm Zn). This anomaly is described in **“Interpretation and Conclusions”**. Follow-up work on the anomaly and other areas of the claims is recommended.

The property consists of 96 mineral tenures, listed in Table 1 below, covering 1,269 cells totaling 20,376.257 hectares. All claims are contiguous except for the Bitter Group. These claims are listed separately at the end of Table 1.

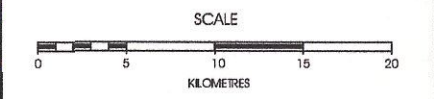
Table 1: Table of Mineral Claims

Tenure Number	Claim Name	Owner	Good to Date	Area (hectares)
508285	Ruby 1	200071(100%)	31/8/08	89.197
508286	Ruby 2	200071(100%)	31/8/08	451.335
508288	Ruby 3	200071(100%)	31/8/08	451.488
508289	Ruby 4	200071(100%)	31/8/08	451.587
508290		200071(100%)	31/8/08	343.074
508291		200071(100%)	31/8/08	379.204
508292		200071(100%)	31/8/08	379.196
508876	Ruby-8	200071(100%)	31/8/08	451.1
508878	Ruby-9	200071(100%)	31/8/08	432.808
508879	Ruby-10	200071(100%)	31/8/08	450.684



LEGEND

- Town
- Mineral Inventory Symbols
 - ⊗ MINFILE status
 - ⊗ Developed Prospect
 - ⊗ Past Producer
 - ⊗ Producer
 - ⊗ Important Prospect, Prospect
 - ▲ Showing
- VMS Deposit
- Discovery
 - All Others
- Mineral Titles
 - Bear Property - Auramex Resource Corp. Mineral Claims
 - Other Auramex Resource Corp. Mineral Claims
- Topographic
 - Glaciers
 - Lakes
 - Ocean
- 1:250K Grid Map Outline
- - - International Boundary
- - - Roads

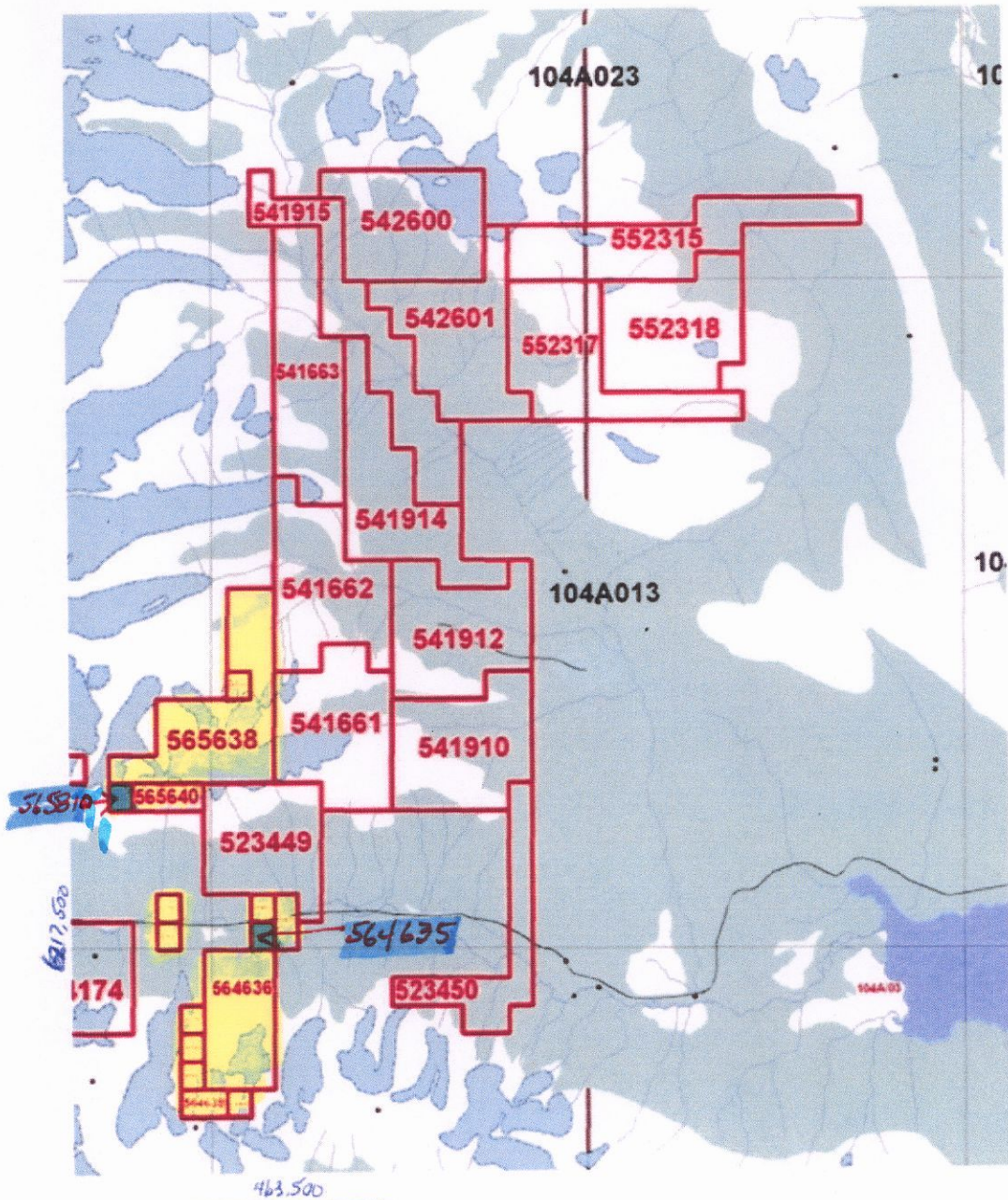


AURAMEX RESOURCE CORP.
BEAR PROPERTY
Claim Location Map
 Skeena Mining Division, B.C.

Scale as shown	Date October, 2008	Figure 1
N.T.S. 103P081	By d.s.d./r.k./lbox	
Rod. Kirkham & David Dunn		

Table 1 (Amended): Contiguous Mineral Claims

Tenure Number	Claim Name	Owner	Good to Date	Area (hectares)
523449	LAUREN GOLD	124665 (100%)	30-Sep-09	378.76
523450	MICKEY FRACTION	124665 (100%)	30-Sep-09	270.64
541661	MICKEY 1	124665 (100%)	30-Sep-09	450.70
541662	MICKEY 2	124665 (100%)	30-Sep-09	450.45
541663	MICKEY 3	124665 (100%)	30-Sep-09	450.11
541910	MICKEY 4	124665 (100%)	30-Sep-09	450.73
541912	MICKEY 5	124665 (100%)	30-Sep-09	450.53
541914	MICKEY 6	124665 (100%)	30-Sep-09	450.30
541915	MICKEY 7	124665 (100%)	30-Sep-09	450.06
542600	MICKEY 8	124665 (100%)	30-Sep-09	449.87
542601	MICKEY 9	124665 (100%)	30-Sep-09	450.05
552315	MICKEY 10	124665 (100%)	30-Sep-09	449.93
552317	MICKEY 11	124665 (100%)	30-Sep-09	450.12
552318	MICKEY 12	124665 (100%)	30-Sep-09	450.10
564635		1476571(100%)	16-Oct-08	18.04
564636		1476571(100%)	16-Oct-08	270.74
564638		1476571(100%)	16-Oct-08	36.11
564639		1476571(100%)	16-Oct-08	36.08
564641		1476571(100%)	16-Oct-08	18.04
564663		1476571(100%)	16-Oct-08	18.04
564665		1476571(100%)	16-Oct-08	18.06
565638		1476571(100%)	16-Oct-08	432.67
565640		1476571(100%)	16-Oct-08	54.10
565725		1476571(100%)	16-Oct-08	18.03
565810		1476571(100%)	16-Oct-08	18.03
567083		1476571(100%)	16-Oct-08	18.04
567585		1476571(100%)	16-Oct-08	18.05
567586		1476571(100%)	16-Oct-08	18.05
567676		1476571(100%)	16-Oct-08	18.05



Optioned from Kelly Funk

Work Performed

AURAMEX RESOURCE CORP. Figure 1A
July 2009

Table 1: List of Mineral Claims (cont.)

Tenure Number	Claim Name	Owner	Good to Date	Area (hectares)
510286		200071(100%)	31/8/08	451.395
510287		200071(100%)	31/8/08	378.836
511583	Ruby 14	200071(100%)	31/8/08	450.389
511584	Ruby 15	200071(100%)	31/8/08	36.036
511585	Ruby 16	200071(100%)	31/8/08	54.082
515424	Ruby 17	200071(100%)	31/8/08	90.035
515425	Ruby 18	200071(100%)	31/8/08	450.182
516862	Ruby 19	200071(100%)	31/8/08	36.105
517320	Ruby 20	200071(100%)	31/8/08	216.61
517333	Ruby 21	200071(100%)	31/8/08	451.699
517340	Ruby 22	200071(100%)	31/8/08	360.089
517343	Ruby 23	200071(100%)	31/8/08	288.678
517354	Ruby 24	200071(100%)	31/8/08	306.462
520649	Ruby 25	200071(100%)	31/8/08	451.764
520654	Ruby 26	200071(100%)	31/8/08	451.865
520655	Ruby 27	200071(100%)	31/8/08	361.592
520659	Ruby 28	200071(100%)	31/8/08	288.741
523428	Ice Bear-2	200071(100%)	31/8/08	90.276
523487		200071(100%)	31/8/08	452.042
523489	Ruby 30	200071(100%)	31/8/08	451.973
523618	Ruby 31	200071(100%)	31/8/08	452.126
523675	Ruby 32	200071(100%)	31/8/08	90.255
523676	Ruby 33	200071(100%)	31/8/08	90.223
523718	Ruby 34	200071(100%)	31/8/08	36.016
523719	Ruby 35	200071(100%)	31/8/08	54.008
523720	Ruby 36	200071(100%)	31/8/08	306.947
523721	Ice Bear 3	200071(100%)	31/8/08	252.701
524174	Ice Bear 4	200071(100%)	31/8/08	306.802
525014	Ruby 37	200071(100%)	31/8/08	144.036
525015	Ruby 38	200071(100%)	31/8/08	450.254
525019	Ruby 39	200071(100%)	31/8/08	450.625
525021	Ice Bear 7	200071(100%)	10/1/07	216.58
525022	Lauren 3	200071(100%)	31/8/08	18.039
526938	Ruby 40	200071(100%)	31/8/08	198.454
526939	Lauren 4	200071(100%)	2/2/07	54.118
527276	Lauren 5	200071(100%)	31/8/08	18.037
527277	Lauren 6	200071(100%)	31/8/08	18.036
527278	Lauren 7	200071(100%)	31/8/08	18.037
529044	Ruby 45	200071(100%)	31/8/08	452.548
529046	Ruby 46	200071(100%)	31/8/08	452.995
529825	Ruby 48	200071(100%)	31/8/08	108.65
529874	Ruby 48	200071(100%)	31/8/08	452.901
529875	Ruby 41	200071(100%)	31/8/08	108.734
533155	Ruby 42	200071(100%)	31/8/08	449.86
533156	Ruby 43	200071(100%)	31/8/08	215.716
533159	Ruby 44	200071(100%)	31/8/08	450.339

Table 1: List of Mineral Claims (cont.)

Tenure Number	Claim Name	Owner	Good to Date	Area (hectares)
536758	Ruby 49	200071(100%)	31/8/08	450.53
536758	Ruby 50	200071(100%)	31/8/08	234.583
536762	Lauren 8	200071(100%)	31/8/08	36.077
537403	Ruby 51	200071(100%)	31/8/08	432.202
537404	Ruby 52	200071(100%)	31/8/08	126.773
537405	Ruby 53	200071(100%)	31/8/08	72.442
537558	Ruby 54	200071(100%)	31/8/08	306.719
537559	Ruby 55	200071(100%)	31/8/08	36.087
537560	Lauren 9	200071(100%)	31/8/08	90.179
538638	Lauren 10	200071(100%)	31/8/08	90.223
538817	Lauren 11	200071(100%)	31/8/08	72.115
538818	Ruby 56	200071(100%)	31/8/08	18.043
541586	Ruby 57	200071(100%)	18/9/07	126.267
541661	Mickey 1	200071(100%)	19/9/07	450.696
541662	Mickey 2	200071(100%)	19/9/07	450.453
541663	Mickey 3	200071(100%)	19/9/07	450.111
523449	Lauren Gold	200071(100%)	31/8/08	378.76
523450	Mickey Fraction	200071(100%)	4/12/06	270.636
524176	Ice Bear 5	200071(100%)	30/9/06	270.588
524177	Ice Bear 6	200071(100%)	31/8/08	234.411
564635		146571	16/10/08	18.042
564636		146571	16/10/08	270.737
564638		146571	16/10/08	36.111
564639		146571	16/10/08	36.083
564641		146571	16/10/08	18.044
564663		146571	16/10/08	18.041
564665		146571	16/10/08	18.056
565638		146751	16/10/08	432.665
565640		146751	16/10/08	54.102
565725		146751	16/10/08	18.026
565810		146751	16/10/08	18.034
567083		146751	16/10/08	18.042
567585		146751	16/10/08	18.053
567586		146751	16/10/08	18.052
567676		146751	16/10/08	18.05
569510		146751	6/11/08	18.039
569511		146751	6/11/08	36.078

Non-Contiguous Claims

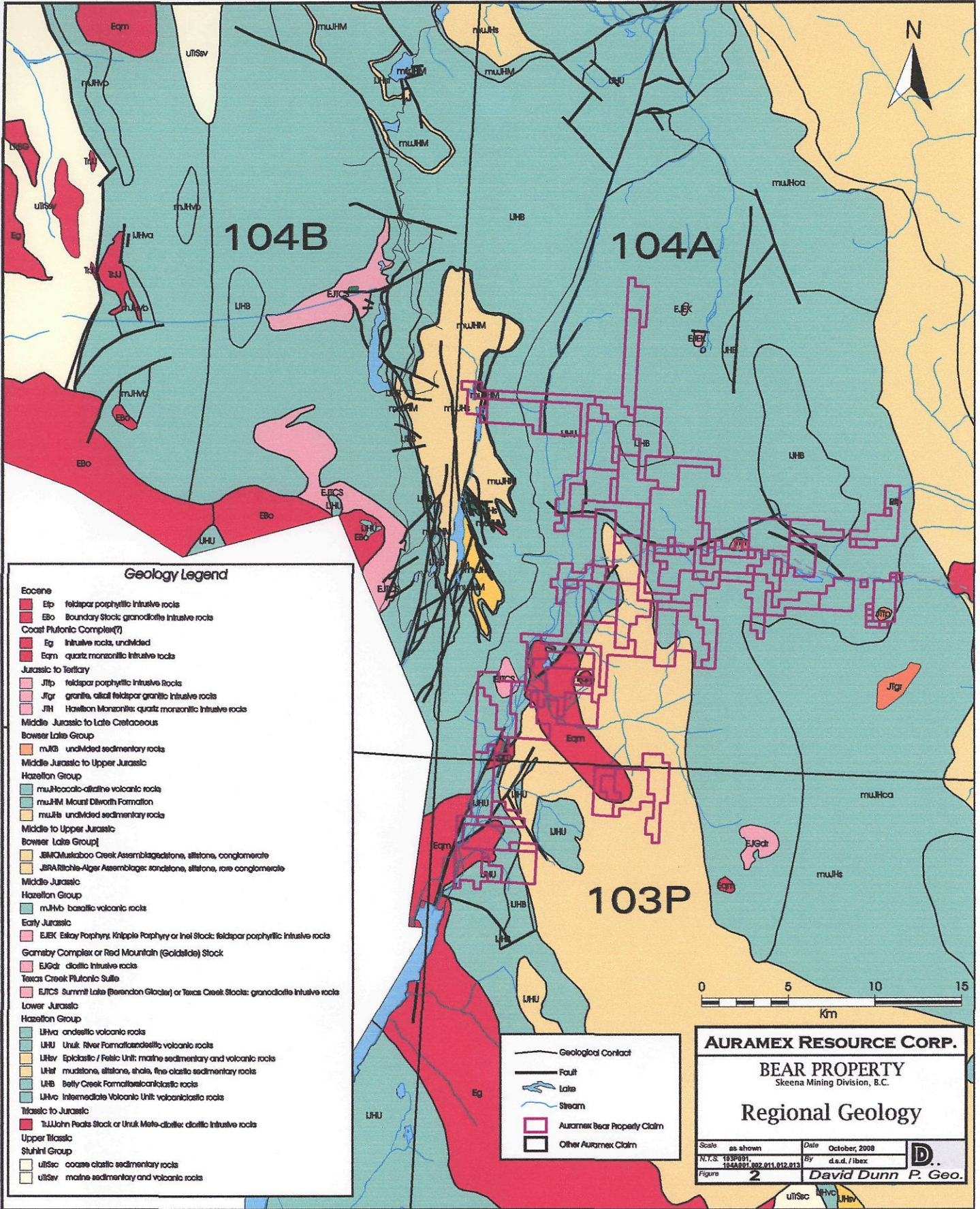
Tenure Number	Claim Name	Owner	Good to Date	Area (hectares)
520656	Bitter 1	200071(100%)	31/8/08	452.391
520657	Bitter 2	200071(100%)	31/8/08	452.422
520658	Bitter 3	200071(100%)	31/8/08	235.273
523722	Bitter 4	200071(100%)	31/8/08	108.582

Most of the mineral claims are owned by R. V. Kirkham. The company holds an option to purchase 100% interest in the claims for cash (paid) and shares (payable over the three year term of option) with Kirkham retaining a 1% NSR with a \$2,000,000 buyout.

The last 17 claims listed contiguously are owned by Kelly Funk. The company holds an option to earn 100% interest in these claims for \$3,000 cash (paid) and 100,000 shares (50,000 issued) and the expenditure of at least \$5,000 on the claims in 2008 and 2009 (2008 spent).

The property is located in the valleys and adjoining ridges of the Bear River and American Creek (Fig. 2). Elevations range from sea level at Stewart in the south part of the claims to 2,000 metres above sea level immediately west of Mt. Disraeli on the eastern edge of the property. Terrain is rugged with steep valley walls rising from the relatively flat valley bottom. Mature hemlock, cedar and spruce are present on the unlogged portions of the lower slopes changing rapidly to sub-alpine spruce and alpine vegetation from 1,000 to 1,300 metres. Approximately 30% of the merchantable timber on the property has been logged.

Regional geology is shown on Figure 2. The Stewart area is on the eastern margin of the Coast Plutonic Complex. Mesozoic volcanic and sedimentary rocks are intruded by Coast granitic rocks, ranging in age from early Jurassic to Tertiary, in the form of stocks and dyke swarms. There are several styles of mineralization in the region, including structurally controlled quartz carbonate veins and stockworks, like the Silbak-Premier, which has produced 24,814 tonnes lead, 7,961 tonnes zinc, 1,853 tonnes copper, 1,333 tonnes silver, 81 tonnes cadmium and 62 tonnes gold from 5,876,992 million tonnes milled, located 8 kilometres west of the property. Volcanogenic massive sulphide deposits are also present, both Besshi and Kuroko style, as exemplified by the Granduc and Eskay Creek deposits respectively. Granduc mine is a copper rich Besshi style volcanogenic massive sulphide deposit, which has produced 190,144 tonnes copper, 124 tonnes silver and two tonnes gold from 15,559,369 tonnes milled, located 21 kilometres west of the property. Eskay Creek is a gold rich, shallow sub-aqueous Kuroko style volcanogenic massive sulphide deposit, which has produced 4,293 tonnes of silver, 91 tonnes gold, one tonne zinc and 0.4 tonnes lead from 1,769,470 tonnes milled, located 60 kilometres northwest of the property. Copper gold alkalic porphyry deposits, calc-alkalic copper molybdenum porphyry deposits and molybdenum porphyry deposits also are present in the area as exemplified by Galore Creek, Schaft Creek and Kitsault, respectively. Galore Creek is located 100 kilometres northwest of the property and contains greater than one billion tonnes grading greater than one percent copper equivalent. Schaft Creek is located 120 kilometres north northwest of the property and contains greater than 3.5 billion tonnes of 0.35 % copper and 0.03 % molybdenum. Kitsault is located 100 kilometres southeast of the property and contains 104 million tonnes containing 0.11 % molybdenum.



Exploration in the Area of the Bear Claims dates back to the earliest days of the Stewart Camp, 1900 to 1910, as the claims are located along the Bear River valley, the main land access route to Stewart. Early exploration focused on the area near Stewart and quickly spread in all directions. Dates and descriptions of some of this initial work in the area of the Bear Property follow. From 1910 there were reports of work by prospectors on: the **Ruby Silver**, where in 1910 some tunnelling was conducted on the property; the **Bonanza** showing, where 2 shafts and some stripping were done on a vein also in 1910; the **Victor** showing was discovered on the south side of the Bear River; the **St. Elmo** showing, discovered in 1919 and located on the edge of the glacier on Bitter Creek also received work.

Some open cutting was reported in 1920 on the **Royal Irish**, located on the east bank of the Bear River. The **Anaconda** showing, located on Basin Creek, was discovered the same year as was the **Hope** showing, located about 2.5 kilometres east of American Creek, between Champion and Basin Creeks; the **Lode 6** showing, located on the north side of a tributary of Basin Creek about 2.8 kilometres east of American Creek; the **Pershing** showing, located 1800 metres east-southeast of the confluence of American Creek and the Bear River; the **Portland** showing, located about 3.2 kilometres northeast of the confluence of American Creek and the Bear River; and the **Lode 3** showing, located about 10.2 kilometres north-northwest of the confluence of American Creek with the Bear River. All of these showings received some work in this era. Several others showings are located in the surrounding areas of the claims. Some shipments of ore were made from the **Terminus Mine** in the 1920s.

Major Showings on Bear Property

Terminus

Between 1910-28 Northern Terminus Mines Ltd. (and later Terminus Mines Ltd.) conducted exploration work on the property. By 1911, a 13.8 metre shaft, an opencut and a short tunnel had been completed. That year a shipment of ore (10.8 tonnes) assayed about \$200 per tonne. Most of the underground work was apparently completed in 1924 and intersected the Terminus vein about 22 metres below the surface exposure. From 1925-49, 24.5 tonnes were high graded from the property; 152,312 grams of silver, 3,944 kilograms of lead and 5,036 kilograms of zinc were recovered. No further work was reported until 1981 when Gatrow Resources Inc. conducted a prospecting and sampling program on the Terminus-Vancouver claim groups. Most of the previous workings were resampled. In 1988, D. Cremonese flew a heli-borne VLF-EM and magnetometer survey over the Ernst 1-2 and Pabicia claims, which included the area of the occurrences. In 1990, Hyder Gold Inc. performed geological and geochemical work on the Terminus-Vancouver property; this work was done mainly on the Hope claims. An in-situ mineral inventory of the Terminus vein was estimated in 1990 to be 5,182 tonnes grading 391.9 grams per tonne silver, 0.92 per cent zinc and 0.76 per cent lead (Assessment Report 20976).

Ruby Silver

In 1910, the Portland Dreadnought Mining Company carried out tunnelling and open cutting on a group of three claims which presumably covered the showing. In 1924, Ruby Silver Mines, was formed and acquired the Ruby Silver claims (Ruby, Ruby 1, Star, Stirling, Pershing and Pershing 1) and Ruby Silver Extension claims (Ruby 2-5). That year the Ruby Silver adit, on the Ruby claim, was driven at least 46 metres; several crosscuts were also driven. Further work was done the following year; this work probably included extension of the adit to about 62 metres. The company name was changed in 1929 to Ruby Silver Copper Mines. No further work was reported until 1984 when D. Brownlee acquired the Ruby Silver group and conducted an evaluation the following year. In 1986,

Thios Resources Inc. acquired the property and subsequently entered into a joint venture with Adrian Resources Ltd. The joint venture conducted geological, geochemical and geophysical (VLF-EM and magnetometer) surveys on the property in 1990.

Portland Showing

The Portland Bear River Mining Co. Ltd. acquired the Ruby Fr. 1, Ruby Fr. 2, Signal, Sicker, Eureka, Harrold, Snowslide and Rock Creek claims in 1910. During 1910-12 the company carried out tunnelling and open cutting. In 1925(?), S. Deschamps acquired the Portland 1-3, 4 Fr., 5-6 and IbeX 1-2 claims covering the showing. Prospecting and further open cutting were reported on IbeX 6 claim in 1931.

2008 Geological and Prospecting Program

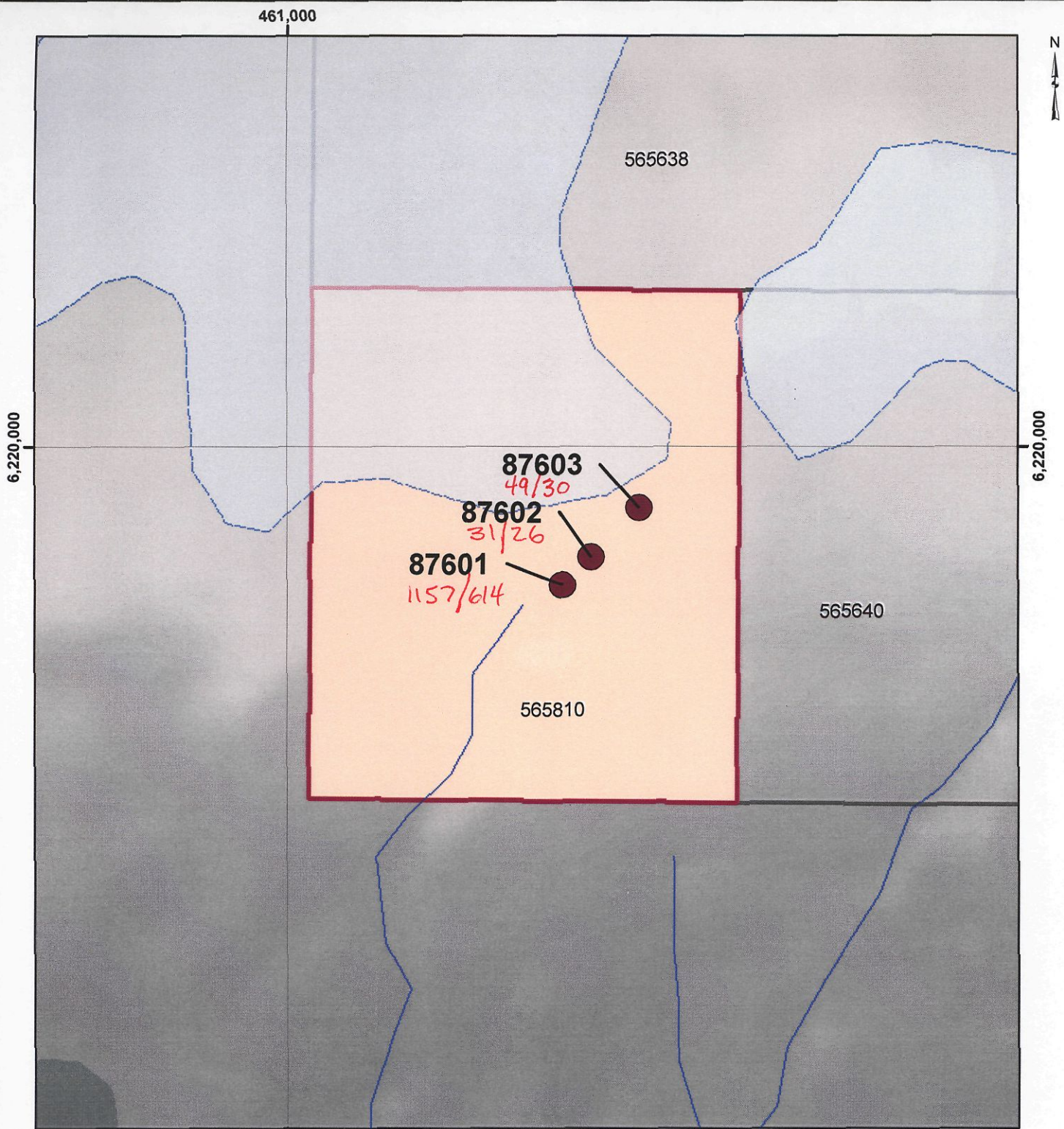
The 2008 program was designed to test two areas of the property, the north rim of the Bear Pass between the glaciers and the cliff, approximately 2.0 kilometres east of Strohn Lake, and the face on the south side of the Bear Pass, approximately 3.5 kilometres east of Strohn Lake, using a program of prospecting and paired pan concentrate and silt stream sediment sampling.

One traverse was carried out on the north side of the Bear Pass mainly on claim 565640. Three rock samples were taken (Fig.3). Inclement weather, including thick fog, and the necessity to cross glacier ice covered with fresh snow curtailed this traverse. The area covered consisted mainly of silicified, pyrite bearing andesite pyroclastics, probably the upper section of the Hazelton Group. A contact was observed at about 1900 metres elevation, with Bowser Lake sediments at higher elevations. This is roughly the same stratigraphy as the Eskay Creek deposit, and an area that warrants detailed prospecting and mapping

Another traverse was carried out on the south side of the Bear Pass mainly on claim 564635. One pan concentrate sample, one silt sample and three rock samples were taken (Fig. 4). A standard silt sample, consisting of a gusseted kraft bag filled half full of the finest material available from active stream channels was taken. A pan concentrate sample consisting of one pan of -10 mesh material from the active stream channel panned to a black sand concentrate and one pan of moss from the active stream channel screened and panned to a black sand concentrate was taken at the same site as the silt sample. A ten to 20 gram concentrate was produced. The pan concentrate procedure produces a semi-quantitative result, very effective in detecting gold in the Canadian Cordillera. Analytical procedures are described below and results shown in Appendix C. Prospecting of the area traversed was carried out and three samples of mineralized float were taken. These samples did not return values of economic interest.

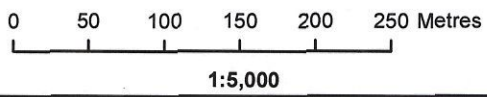
All samples were located using GPS receivers and plotted on BCTM 1:20,000 scale maps. Locations of stream sediments and information on stream character and float rock abundance are recorded in Appendix B. Alteration present and mineralogy of rock samples are also recorded in Appendix B.

Assay results are shown in Appendix C. Assay treatment for silt samples was to screen to -80 mesh then dissolve a one gram sub-sample in aqua regia and measure 28 elements using ICP-ES. A ten gram sub-sample was fire assayed to recover gold, with the bead dissolved in aqua regia and measured using atomic absorption. Pan concentrate samples were screened to -20 mesh, then the whole sample digested using a four acid attack with the results measured for 28 elements using ICP-ES. A one assay ton fire assay was carried out on rock samples with aqua regia dissolution and ICP-ES measurement

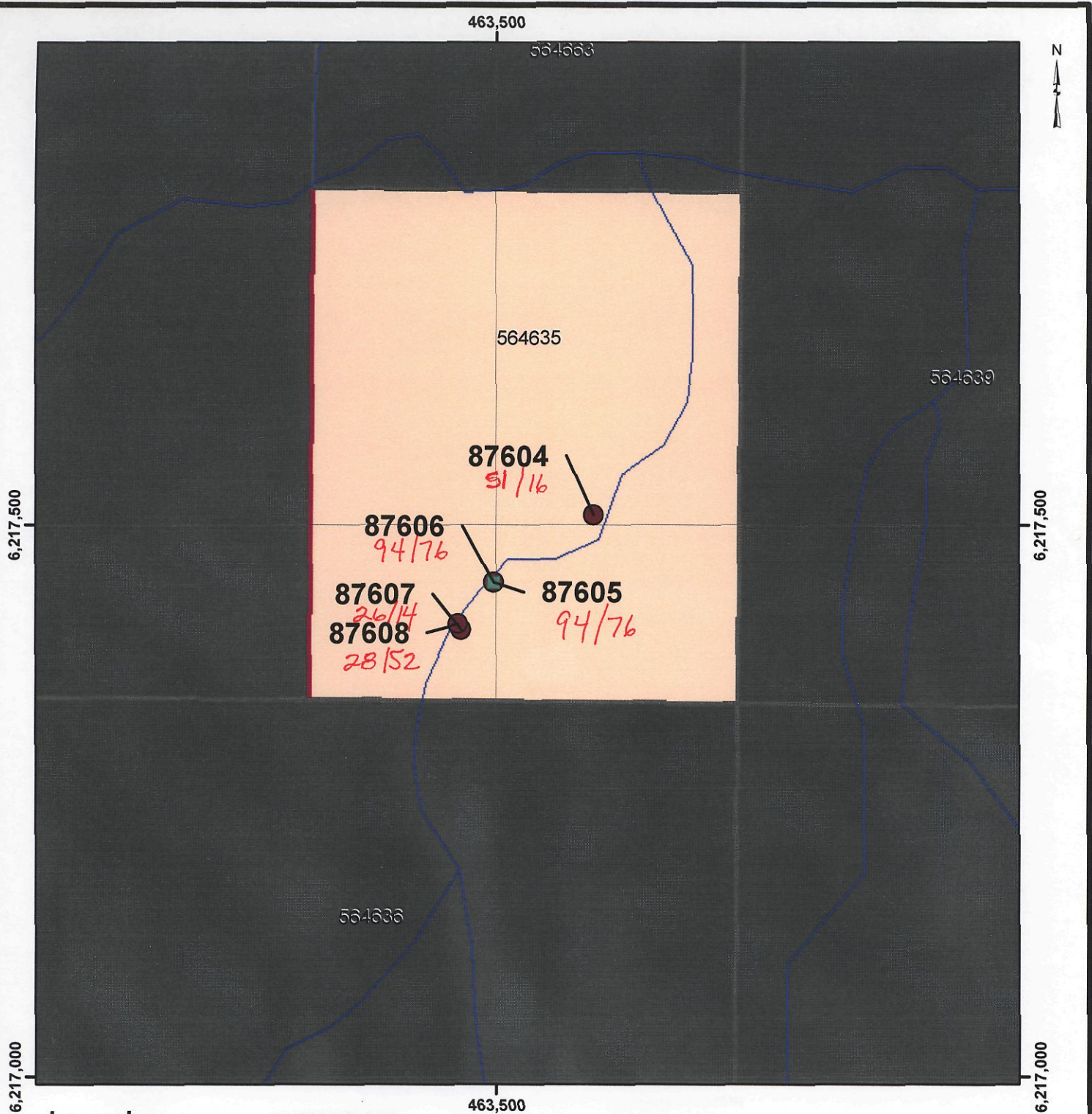


Legend

- Rock samples. *Zn/Pb ppm*
- Drainage
- Icefields/glaciers
- Lakes
- Mineral Claims
- Claim Block 565810
- Forested areas

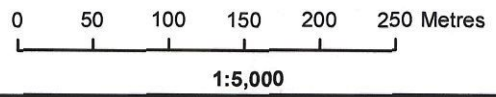


Auramex Resource Corp.					
Project Name Surprise Creek			Claim 565810 Geochemical Sampling Sites		
Datum: Nad 83					
Projection: UTM Zone 09N					
Drawn By: SMART MAP	Date: July, 2009	Approved By:	Version: A	Fig No: 3	



Legend

- Pan Concentrate *Zn/Pb ppm*
- Rock Sample *Zn/Pb ppm*
- Drainage
- Icefields/glaciers
- Lakes
- Mineral Claims
- Claim Block 564635
- Forested areas



Auramex Resource Corp.				
Project Name Surprise Creek		Claim 564635 Geochemical Sampling Sites		
Datum: Nad 83				
Projection: UTM Zone 09N				
Drawn By: SMART MAP	Date: July, 2009	Approved By:	Version: A	Fig No: 4

for gold. A one gram sub-sample was also subjected to four acid attack and measured using ICP-ES for 28 elements. All assays were carried out by Eco Tech Laboratory Ltd., Kamloops, B.C.

Interpretations and Conclusions

The rim on the north side of the Bear Pass covered by tenure numbers 565810, 565638 and 565640 covers upper Hazelton Group silicified pyrite bearing andesite pyroclastics in contact with Bowser Lake sediments. Some of this rock has been recently uncovered by melting ice. This is a similar stratigraphic horizon to the Eskay Creek mine. One of the three samples taken returned an anomalous zinc value, Sample 87601: 1157 ppm Zn. The main accessory mineral at the Eskay Creek mine is zinc. The area of Sample 87601 should be prospected and mapped in detail. The remainder of the traverse along the ice edge across tenures 565640 and 565638 should be carried out. This work should be done under optimum weather conditions.

Bedded rocks in the Bear Pass area exhibit a broad anticlinal structure. Stratigraphy on the north side of the pass is repeated on the south side of the pass. This is particularly interesting because of the recent discovery of stratibound zinc, lead, silver mineralization immediately east of the Bear Glacier by Mountain Boy Minerals Ltd. A geologically imagined resource of about 40,000,000 tonnes containing 2% zinc, 1% lead and 90 grammes silver has been drilled off. The mineralized horizons containing this resource are projected to extend onto tenure 564636. Float samples taken on tenure 564635 probably came from tenure 564636. These samples did not return values of economic interest.

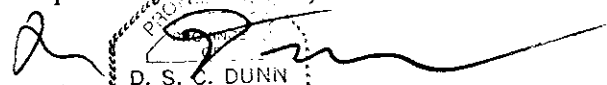
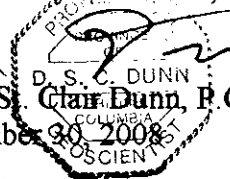
Recommendations

Detailed prospecting and geological mapping should be carried out around the site of Sample 87601. The remainder of the traverse along the ice edge on Tenures 565810, 565640 and 565638.

The upper areas of tenure 564636 should be thoroughly prospected and mapped to attempt to find the eastern extension of the mineralization on the Mountain Boy property.

This work should take a four person helicopter/truck supported crew 6 days to complete. The recommended program is estimated to cost \$15,000.

Respectfully Submitted,


 D. S. C. DUNN
 David S. C. Dunn, P. Geo.
 November 30, 2008


References

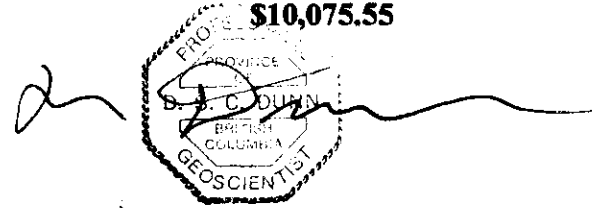
- Alldrick, D.E., (1993) Geology and Metallogeny of the Stewart mining Camp, Northwestern British Columbia. BC Survey Branch, **Bulletin 85**.
- B.C. Minfile: Assessment Reports 8768, 8780, 11,716, 13,403, 14,607, 14,660, 19,800, 23,263, 23,778, 28,381 plus cited property reports.
- Boronowski, A. (1990) Geological and Geochemical Assessment Report on the Diamond, Noonday Fraction, Noonday 4-7 Fractions, Hope 1,2,5,6 Fractions, Silver Dollar and S.L. 2 Claims of the Terminus property Skeena Mining Division, Stewart Area, BC. Assessment Report 20,976.
- Brownlee, D.J. (1986) prospecting and rock Sampling of the Ruby Silver Reverted Crown Grants Assessment report 14,504.
- Chapman, J., (1990) Assessment Report on the Adrain Resources Ltd's and Thios Resources Inc's Ruby Silver Project. Skeena Mining Division, Stewart Area, BC. Assessment report 20,308.
- Chapman, J. & M.V. Vonwermeskerken (1991) Assessment Report on the Ruby Silver Project for Adrain Resources Ltd and Thios Resources Inc, Skeena Mining Division, Stewart Area, BC. Assessment report 21,172.
- Greig, C J; Anderson, R G; Daubeny, P H; Bull, K F. (1994) Geology of the Cambria Icefield: Stewart (103P/13), Bear River (104A/4), and parts of Meziadin Lake (104A/3). Geological Survey of Canada, Open File 2931.
- E.W. Grove, (1986) Geology and Mineral Deposits of the Unuk River-Salmon River-Anyox River. BC Survey Branch, **Bulletin 63**.
- Harris, C.R. (1982) Prospecting Report Terminus Claim Group Assessment Report 10,124
- Hewett, F.G. (1991) Geochemical Report on the Royal Irish Group, Tenajon Resources Corp. Assessment report 21,910
- Kikauka, A. (1989) Geological and Geochemical Report on the Lode 3,4,5,6 and 8 Claim Group Skeena Mining Division, Stewart Area, BC. Assessment Report 19,723.
- Kirkham, R.V. (2006) Regional Setting of the Ruby Claim Group- American Creek, Bear River Valley, Ore Mountain, Roosevelt Creek Area, British Columbia. A Report for Auramex Resource Corporation.
- McLeod Ian (2004) *Prospectors Promoters and Hard Rock Miners*, Tales from the Stewart, BC and Hyder, Alaska Camps. Published by SH Co. Ltd. 134 609 Truswell Road Kelowna BC Copyright by Ian McLeod
- Pritchard, R.A. (1990) Dighem³ Survey for KRL Resources Corp Stewart BC, Assessment Report 20,379

- Rhys, D.A. et al (1995) Geology and setting of the Red Mountain gold-silver deposits northwestern British Columbia, in Schoeter, T.G. (ed.) Porphyry Deposits of the Northwestern Cordillera of North America. Published by Geological Society of CIM Special Special Volume 46, p. 811-828.
- Smithergale, W.G. (1984) Report on Geological Mappings July and August 1984, on the New York Claim Group Near Stewart, BC for Tournigan Mining Explorations Group Ltd. property Skeena Mining Division, Stewart Area, BC. Assessment Report 12,827.
- Wilson, G.L. (1990) summary report on Geological Geochemical work on the Barite, Basin, Lucky Jim, Strohn, Red Cliff and Von Mineral Claims Skeena Mining Division, Assessment Report 20,784.
- Waldner, M.W., (1989) Report on Geological and Geochemical Program Conducted on Reverted Crown Grants and Mineral Claims, Ore Mountain Area, Stewart, BC, Skeena Mining Division, for Grey Siler Mines Ltd. Assessment Report 19,242.

Appendix A
Statements of Costs

Statement of Costs (Bear Property)

Wages: Geologist: D.Dunn: 4.25 day @ \$600/day <i>AK 30, 25/SET 3, 4, 5, 6</i>	\$2,550.00
Geological Technician: J. Delaney: 4.0 days @ \$325/day	1,300.00
Mob/demob:	2,593.51
Room and Board:	999.49
Helicopter: Prism: 1.9 hours @ \$1100/hour:	2,044.25
Assays: Eco Tech: Pan Concentrates: 1 samples @ \$27.75/sample	27.75
Silt Samples: 1 samples @ \$26.65/sample	26.65
Rock Samples: 6 samples @ \$28.00/sample	168.00
Communications:	165.90
Expendables and small tools:	<u>200.00</u>
Project Total	\$10,075.55



Appendix B

List of Sample Locations and Descriptions

Sample Number	UTM Location	Description	Au ppb	Ag g/t	Zn ppm	Pb ppm
Tenure 565810						
87601	460,500E 6,220,000N	1 m chip across qtz stringers in carbonate altered dacite. Minor py. Str. Att. S160° D85°S	5	3.7	1157	614
87602	461,276E 6,219,900N	Grab. Grey chert w/ 1% py.	<5	0.5	31	26
87603	461,319E 6,219,945N	Grab. Grey chert w/ 2% py, minor cypy.	5	1.0	49	30
Tenure 564635						
87604	463,589E 6,217,509	Float. Angular float in creek. Rusty mudstone w/ ++ sphalerite.	<5	0.2	51	16
87605,06	463,498E 6,217,448N	Silt, Pan concentrate. 2m x 20cm.	5	0.9	94	76
		Float: andesite, dacite, mudstone.	5	0.9	94	76
87607	463,469E 6,217,405N	Float. Mudstone w/ ++ sp.	<5	<0.2	26	14
87608	463,466E 6,217,410N	Float. Qtz, barite, chlorite w/ py, sp.	70	0.6	28	52

Appendix C

Sample Results

Alex Stewart Geochemical
 ECO TECH LABORATORY LTD.
 10041 Dallas Drive
 KAMLOOPS, B.C.
 V2C 6T4

ICP CERTIFICATE OF ANALYSIS AS 2008-6215

Auramex Resource Corp
 750 Grand Boulevard
 Vancouver, B.C

Phone: 250-573-5700
 Fax : 250-573-4557

No. of samples received: 6
 Sample Type: Rock
 Project: Bear
 Shipment #: 1
 Submitted by: David Dunn

Values in ppm unless otherwise reported

Et #.	Tag #	Au(ppb)	Ag	Al %	As	Ba	Bi	Ca %	Cd	Co	Cr	Cu	Fe %	La	Mg %	Mn	Mo	Na %	Ni	P	Pb	Sb	Sn	Sr	Ti %	U	V	W	Y	Zn
1	87601	5	3.7	0.25	20	95	<5	0.17	10	3	59	28	1.85	10	<0.01	509	4	0.02	3	280	614	<5	<20	<1	<0.01	<10	<1	<10	1	1157
2	87602	<5	0.5	0.15	40	185	5	<0.01	<1	<1	68	5	1.24	10	<0.01	13	5	0.03	3	200	26	<5	<20	<1	<0.01	<10	1	<10	<1	31
3	87603	5	1.0	0.14	40	110	<5	<0.01	<1	<1	44	4	1.36	<10	<0.01	4	4	0.02	2	210	30	<5	<20	<1	<0.01	<10	1	<10	<1	49
4	87604	<5	0.2	0.54	<5	175	10	1.33	<1	15	30	25	2.97	10	0.19	2157	4	0.01	5	1340	16	<5	<20	28	0.08	<10	53	<10	7	51
5	87607	<5	<0.2	0.59	<5	105	5	2.99	<1	13	37	59	2.82	<10	0.32	1288	3	0.03	7	1020	14	<5	<20	165	0.05	<10	27	<10	3	26
6	87608	70	0.6	0.70	170	70	15	6.04	4	14	45	22	5.35	10	0.70	1311	6	<0.01	10	1040	52	5	<20	520	0.02	<10	29	<10	6	28

QC DATA:**Repeat:**

1	87601	5	3.5	0.26	20	90	<5	0.18	9	3	60	28	1.87	10	<0.01	516	3	0.02	3	290	606	<5	<20	<1	<0.01	<10	<1	<10	2	1136
---	-------	---	-----	------	----	----	----	------	---	---	----	----	------	----	-------	-----	---	------	---	-----	-----	----	-----	----	-------	-----	----	-----	---	------

Resplit:

1	87601	5	3.4	0.26	20	90	<5	0.19	10	2	58	34	1.75	10	<0.01	471	1	0.02	2	270	594	<5	<20	<1	0.01	<10	<1	<10	2	1098
---	-------	---	-----	------	----	----	----	------	----	---	----	----	------	----	-------	-----	---	------	---	-----	-----	----	-----	----	------	-----	----	-----	---	------

Standard:

Pb129a			11.9	0.82	15	60	<5	0.49	54	5	10	1388	1.52	<10	0.65	343	3	0.02	7	420	6192	15	<20	27	0.02	<10	17	<10	<1	9978
Se29		595																												

ICP: Aqua Regia Digestion/ ICP-Finish
 Ag: Aqua Regia Digestion/ AA-Finish

ECO TECH LABORATORY LTD.

Jutta Jealousie
 B.C. Certified Assayer

JJ/sa
 df/6219
 XLS/08

28-Oct-08
Alex Stewart Geochemical
ECO TECH LABORATORY LTD.
 10041 Dallas Drive
KAMLOOPS, B.C.
 V2C 6T4

ICP CERTIFICATE OF ANALYSIS AS 2008 - 6216

Auramex Resources Corp.
 750 Grand Boulevard
North Vancouver, BC
 V7L 3W4

Phone: 250-573-5700
 Fax : 250-573-4557

No. of samples received: 1
Sample Type: Silt
Project: Bear
Shipment #: 1
Submitted by: Peter Erwich

Values in ppm unless otherwise reported

Et #.	Tag #	Au ppb	Ag	Al %	As	Ba	Bi	Ca %	Cd	Co	Cr	Cu	Fe %	La	Mg %	Mn	Mo	Na %	Ni	P	Pb	Sb	Sn	Sr	Ti %	U	V	W	Y	Zn
1	87605	5	<0.2	1.25	25	85	<5	1.23	2	13	7	40	3.85	<10	0.79	1212	<1	<0.01	8	1140	18	<5	<20	55	0.05	<10	39	<10	6	109

QC DATA:

Repeat:

1	87605	10	<0.2	1.20	25	85	<5	1.33	2	13	7	40	3.83	<10	0.79	1197	1	0.01	8	1120	12	<5	<20	51	0.05	<10	37	<10	6	93
---	-------	----	------	------	----	----	----	------	---	----	---	----	------	-----	------	------	---	------	---	------	----	----	-----	----	------	-----	----	-----	---	----

Standard:

Till-3			1.4	1.01	95	40	<5	0.60	1	11	58	21	2.07	10	0.57	298	3	0.02	34	470	28	<5	<20	13	0.06	<10	37	<10	9	39
SF30		820																												

ICP: Aqua Regia Digestion/ ICP-Finish
Ag: Aqua Regia Digestion/ AA-Finish

JJ/nw
 df/1401s
 XLS/08

ECO TECH LABORATORY LTD.
 Jutta Jealouse
 B.C. Certified Assayer

Alex Stewart Geochemical
 ECO TECH LABORATORY LTD.
 10041 Dallas Drive
 KAMLOOPS, B.C.
 V2C 6T4
 www.alexstewart.com

ICP CERTIFICATE OF ANALYSIS AK 2008- 6217

Auramex Resource Corp
 750 Grand Boulevard
 Vancouver, B.C

Phone: 250-573-5700
 Fax : 250-573-4557

No. of samples received: 6
 Sample Type: Pan Concentrate
 Project: Bear
 Shipment #: 1
 Submitted by: David Dunn

Values in ppm unless otherwise reported

Et #.	Tag #	Au ppb	Ag	Al %	As	Ba	Bi	Ca %	Cd	Co	Cr	Cu	Fe %	La	Mg %	Mn	Mo	Na %	Ni	P	Pb	Sb	Sn	Sr	Ti %	U	V	W	Y	Zn
1	87606	5	0.9	1.01	15	100	10	0.61	3	39	11	79	7.45	10	0.64	815	6	0.01	12	1180	76	<5	<20	43	0.06	<10	76	<10	<1	94
QC DATA:																														
Repeat:																														
1	87606	5	0.8	1.00	15	105	20	0.60	4	42	12	74	7.62	10	0.63	799	10	0.01	14	1220	68	5	<20	40	0.06	<10	81	<10	<1	100
Standard:																														
Till 3			1.4	0.89	10	75	<5	0.47	67	5	<1	1411	1.70	<10	0.70	352	7	0.03	6	420	6130	20	<20	33	0.05	<10	15	<10	1	9985
SF30		830																												

JJ/sa
 df/6219
 XLS/08

ECO TECH LABORATORY LTD.
 Jutta Jealouse
 B.C. Certified Assayer

Appendix D

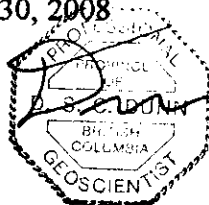
Author's Statement of Qualifications

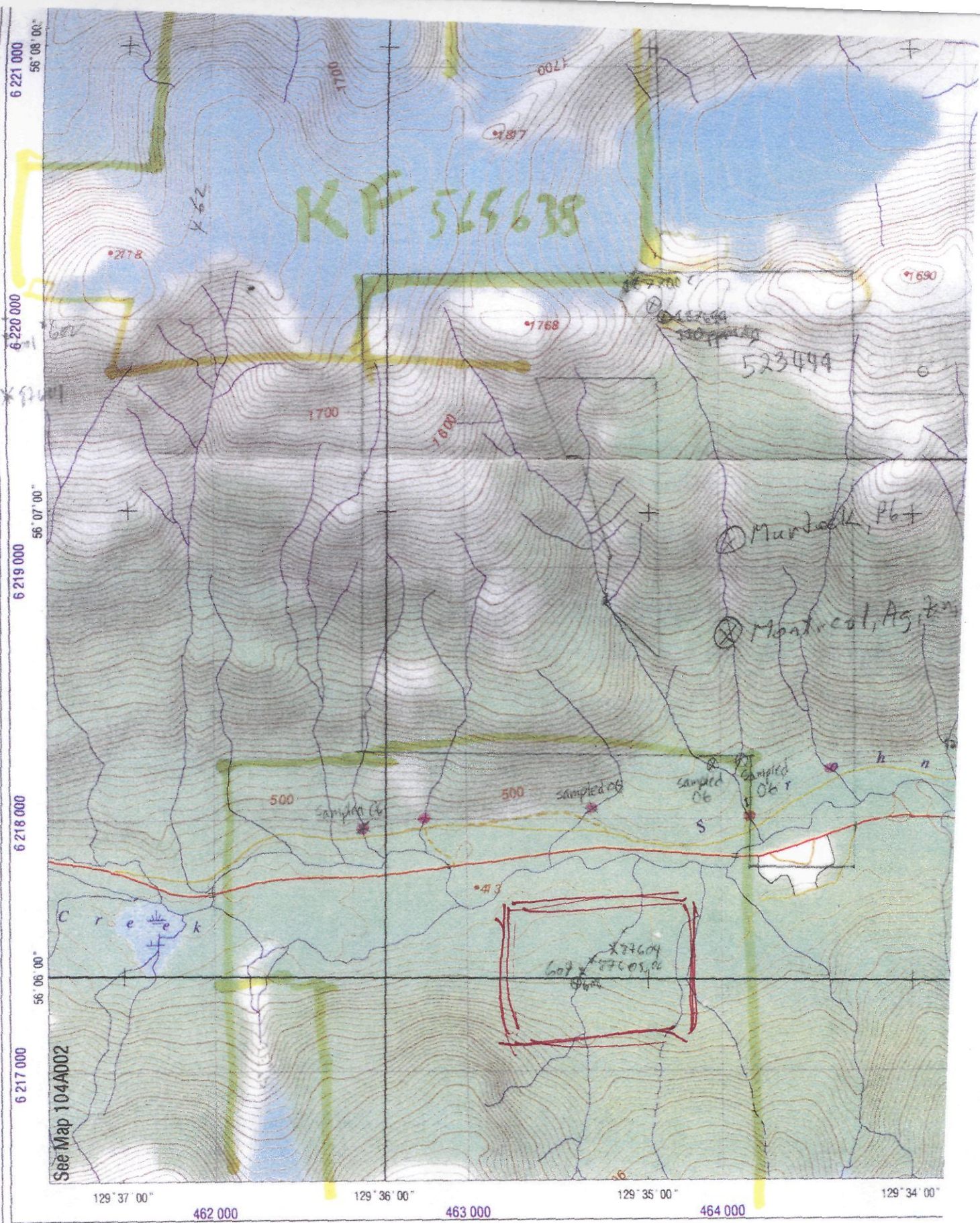
Author's Statement of Qualifications

I, David St. Clair Dunn, Professional Geoscientist, with a business address at 1154 Marine Drive, Gibsons, British Columbia, Canada certify that:

1. I am a graduate of the University of British Columbia and hold a degree of Bachelor of Science in Geology.
2. I have practised my profession as a prospector and geologist for 39 years.
3. I am registered as a Professional Geoscientist with the Association of Professional Engineers and Geoscientists of the Province of British Columbia (Reg. # 18479). I am a Fellow of the Geological Association of Canada and a member of the Association of Applied Geochemists, the Canadian Institute of Mining, Metallurgy and Petroleum, the Education Committee of the Association for Mineral Exploration of B.C., the Society of Economic Geologists and the Mining Exploration Group.
4. I have based my conclusions and recommendations in this report on a review of all available reports and direct supervision of the 2008 geological and prospecting program on the Bear Property.
5. I am the sole author of this report.
6. I am not aware of any material fact or material change from the information in this report that would make the report misleading.
7. I consent to the use of this report for the purpose of private or public financing.

November 30, 2008





See Map 104A002

Roads:

- highway
- - - paved
- - - loose
- · - · - rough
- · - · - under construction

- Snow shed
- - - Cut, earthwork
- · - · - Fill, embankment
- · - · - Cliff, scarp
- + Toll gate
- + Weigh scale
- ⊕ Airport, airfield, active

- - - Rail spur
- ⊕ Railway, turntable
- - - Light rail transit
- · - · - Foot bridge
- - - Ferry route
- x Dock, boat ramp
- - - Breakwater, seawall

