

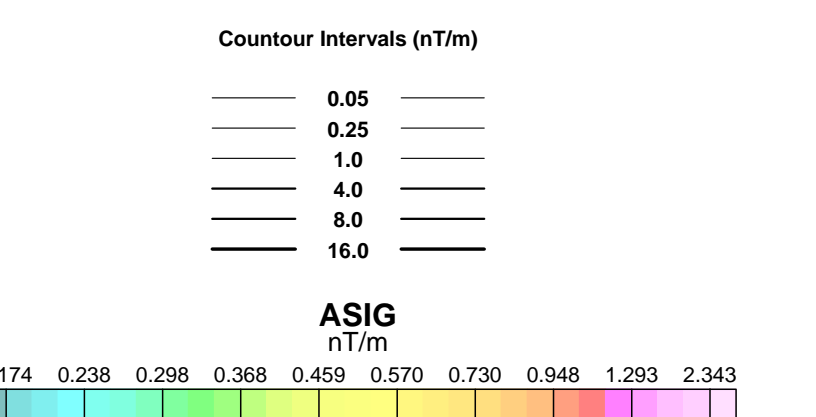
Survey Specifications:
 Base: Atlin, BC
 Date Flown: August 25 - 31, 2008
 Aircraft: ASter B2
 Registration: C-GPHQ
 Flight Line Spacing: 100 m
 Flight Line Direction: N90°E
 Tie Line Spacing: 1000 m
 Tie Line Direction: N0°E
 Nominal Bird Height: 45 m
 Sensor Position: 30 m below aircraft

Instrumentation:
 Data Acquisition: CMG DAS
 System: Magnetic Gradiometer, VLF-EM
 Magnetometers: 3 GEM Potassium Total Field
 Vertical Separation: 2.95 m
 Horizontal Separation: 3.45 m
 Sensitivity: +/- 0.001 nT
 Heading Error: +/- 0.15 nT or less
 Gradient Tolerance: 5,000 nT/m maximum
 VLF Station # 1: LaMoure 25.2 kHz
 VLF Station # 2: Jim Creek Seattle 24.8 kHz
 VLF Sensitivity: +/- 5 pT
 Radar Altimeter: Freeflight TRA 3500 @ 10 Hz, +/- 5%
 GPS System: Novatel v4.0 @ 10 Hz, 1-5 m
 Base station Unit: GSM-19 @ 1 Hz, +/- 0.01 nT
 Spectrometer: Radiation Solution RS-500
 Crystals: 4 Downward Looking & 1 Upward Looking
 GRS Acquisition: 1024 Channel Resolution at 1Hz

Navigation:
 System: CD-GPS (Canadian differential)
 Equipment: AgNav Guia and Tee-Jet Receiver
 Elevation: Freeflight TRA 3500 mounted in helicopter

Data Processing:
 Total Magnetic Field: Diurnal correction, tie-line, micro-leveling
 Magnetic Gradients: Heading error, micro-leveling
 VLF: DC bias, line direction

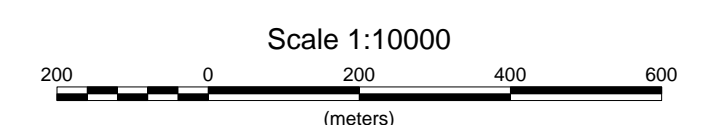
Coordinate System:
 Datum: NAD83
 Major Axis: 6378137.000
 Eccentricity: 0.81819191
 Projection: Universal Transverse Mercator Zone 8
 Central Meridian: 135°W
 Central Scale Factor: 0.9996
 False Easting: 500,000 mE

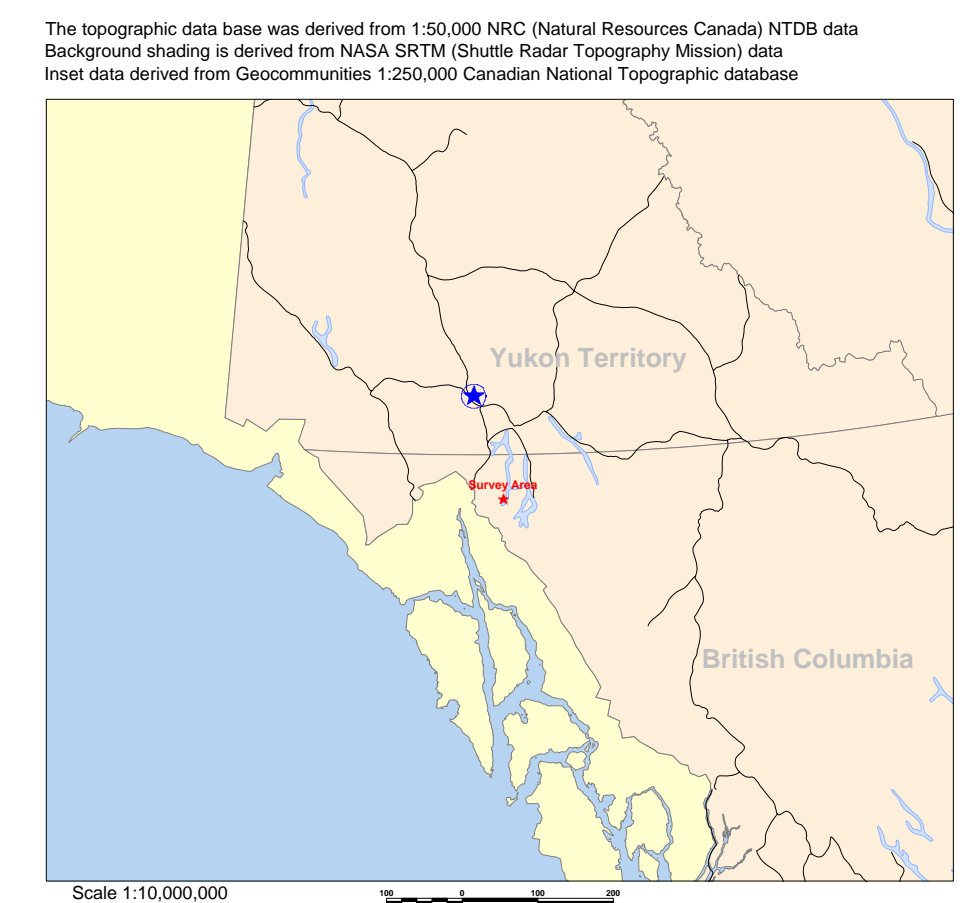
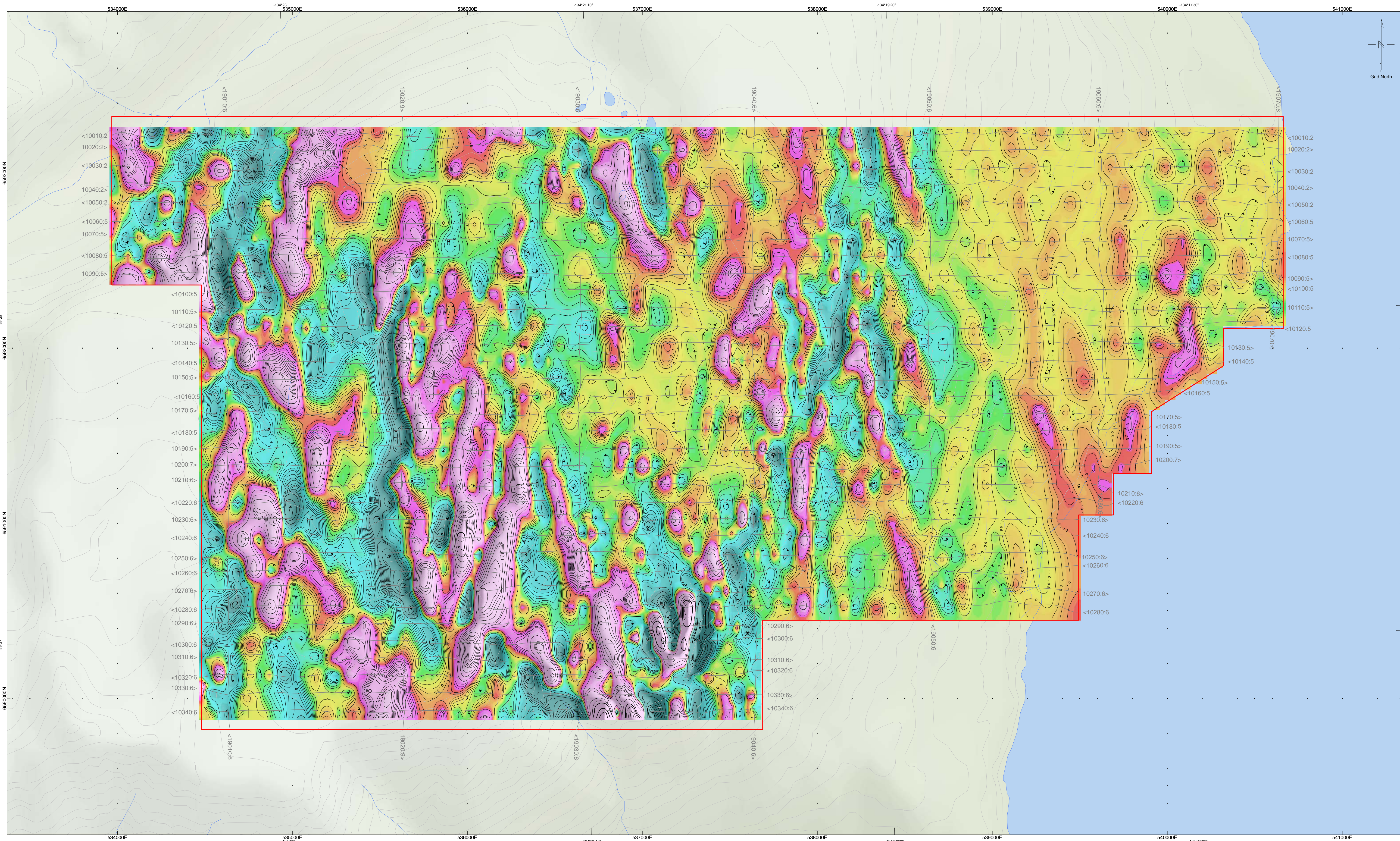


BC Geological Survey
 Assessment Report
 30365c

Eagle Plains Resources Ltd.
 Atlin, BC
Magnetic Analytic Signal
 Titan
CMG Airborne

11500 Fifth Line
 Rockwood, Ontario, Canada, N0B 2K0
 www.cmgairborne.com





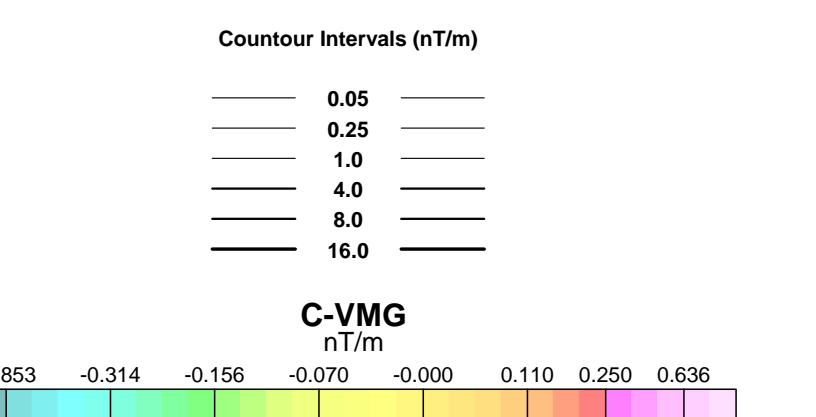
Survey Specifications:
 Base: Atlin, BC
 Date Flown: August 25 - 31, 2008
 Aircraft: ASStar B2
 Registration: C-GPHQ
 Flight Line Spacing: 100 m
 Flight Line Direction: N90°E
 Tie Line Spacing: 1000 m
 Tie Line Direction: N0°E
 Nominal Bird Height: 45 m
 Sensor Position: 30 m below aircraft

Instrumentation:
 Data Acquisition: CMG DAS
 System: Magnetic Gradiometer, VLF-EM
 Magnetometers: 3 GEM Potassium Total Field
 Vertical Separation: 2.95 m
 Horizontal Separation: 3.45 m
 Sensitivity: +/- 0.001 nT
 Heading Error: +/- 0.15 nT or less
 Gradient Tolerance: 5,000 nT/m maximum
 VLF Station # 1: LaMoure 25.2 KHz
 VLF Station # 2: Jim Creek Seattle 24.8 KHz
 VLF Sensitivity: +/- 5 pT
 Radar Altimeter: Freeflight TRA 3500 @ 10 Hz, +/- 5%
 GPS System: Novatel v4.0 @ 10 Hz, 1-5 m
 Base station Unit: GSM-19 @ 1 Hz, +/- 0.01 nT
 Spectrometer: Radiation Solution RS-500
 Crystals: 4 Downward Looking & 1 Upward Looking
 GRS Acquisition: 1024 Channel Resolution at 1Hz

Navigation:
 System: CD-GPS (Canadian differential)
 Equipment: AgNav Guia and Tee-Jet Receiver
 Elevation: Freeflight TRA 3500 mounted in helicopter

Data Processing:
 Total Magnetic Field: Diurnal correction, tie-line, micro-leveling
 Magnetic Gradients: Heading error, micro-leveling
 VLF: DC bias, line direction

Coordinate System:
 Datum: NAD83
 Major Axis: 6378737.000
 Eccentricity: 0.81819191
 Projection: Universal Transverse Mercator Zone 8
 Central Meridian: 135°W
 Central Scale Factor: 0.9996
 False Easting: 500,000 mE

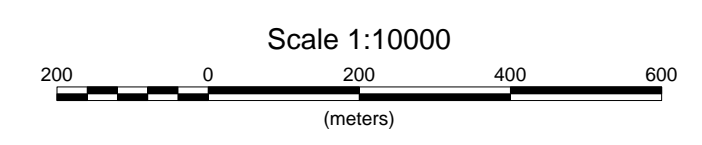


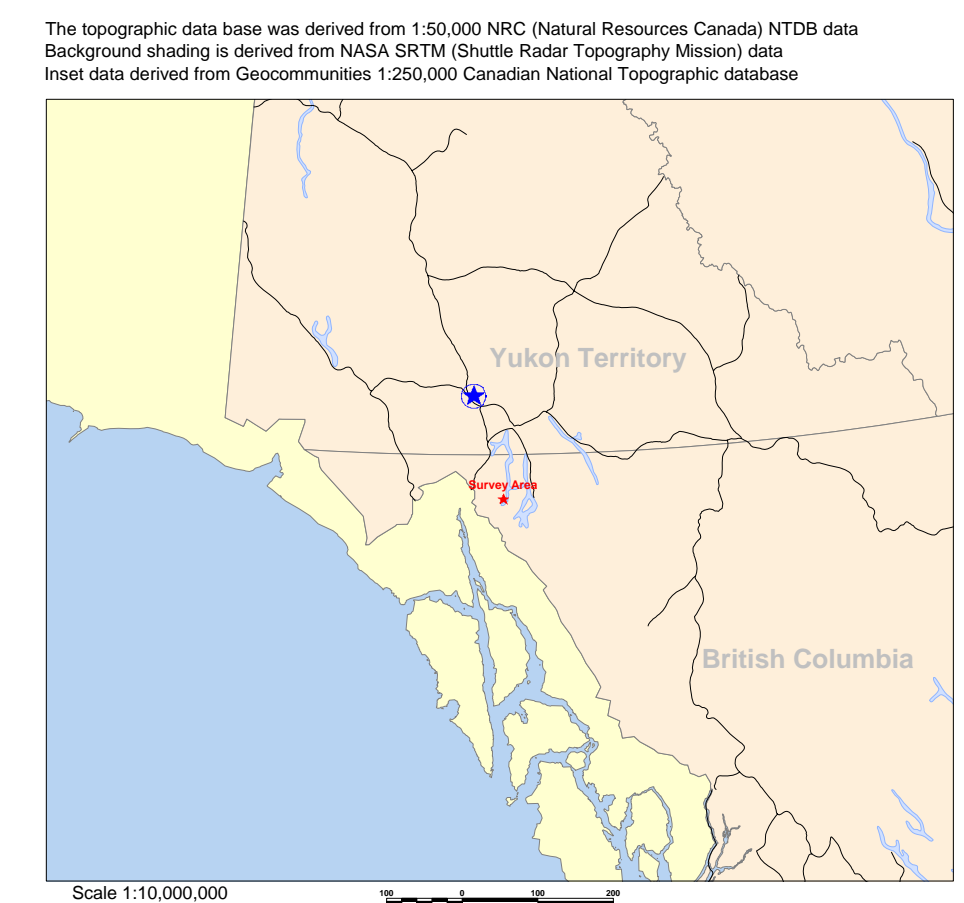
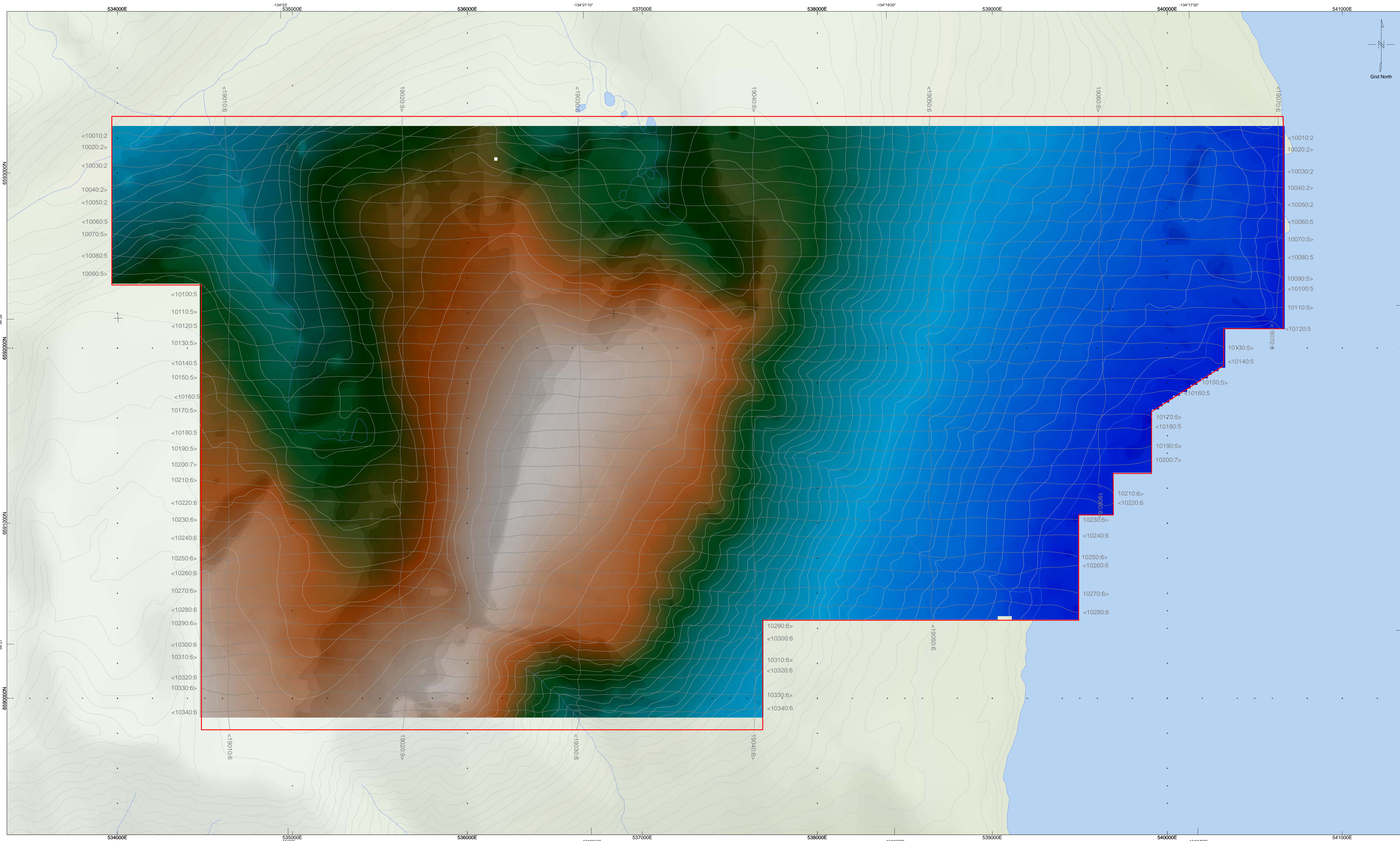
Eagle Plains Resources Ltd.
 Atlin, BC

**Calculated Vertical
 Magnetic Gradient**
 Titan



11500 Fifth Line
 Rockwood, Ontario, Canada, N0B 2K0
 www.cmgairborne.com





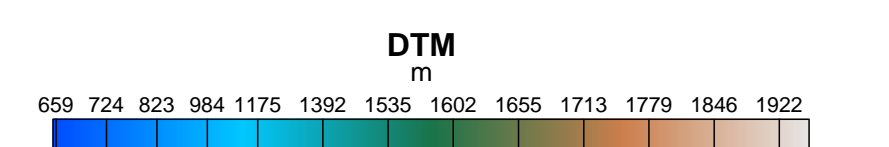
Survey Specifications:
 Base: Atlin, BC
 Date Flown: August 25 - 31, 2008
 Aircraft: ASter B2
 Registration: C-GPHQ
 Flight Line Spacing: 100 m
 Flight Line Direction: N90°E
 Tie Line Spacing: 1000 m
 Tie Line Direction: N0°E
 Nominal Bird Height: 45 m
 Sensor Position: 30 m below aircraft

Instrumentation:
 Data Acquisition: CMG DAS
 System: Magnetic Gradiometer, VLF-EM
 Magnetometers: 3 GEM Potassium Total Field
 Vertical Separation: 2.95 m
 Horizontal Separation: 3.45 m
 Sensitivity: +/- 0.001 nT
 Heading Error: +/- 0.15 nT or less
 Gradient Tolerance: 5,000 nT/m maximum
 VLF Station # 1: LaMoure 25.2 kHz
 VLF Station # 2: Jim Creek Seattle 24.8 kHz
 VLF Sensitivity: +/- 5 pT
 Radar Altimeter: Freeflight TRA 3500 @ 10 Hz, +/- 5%
 GPS System: Novatel v4.0 @ 10 Hz, 1-5 m
 Base station Unit: GSM-19 @ 1 Hz, +/- 0.01 nT
 Spectrometer: Radiation Solution RS-500
 Crystals: 4 Downward Looking & 1 Upward Looking
 GRS Acquisition: 1024 Channel Resolution at 1Hz

Navigation:
 System: CD-GPS (Canadian differential)
 Equipment: AgNav Guia and Tee-Jet Receiver
 Elevation: Freeflight TRA 3500 mounted in helicopter

Data Processing:
 Total Magnetic Field: Diurnal correction, tie-line, micro-leveling
 Magnetic Gradients: Heading error, micro-leveling
 VLF: DC bias, line direction

Coordinate System:
 Datum: NAD83
 Major Axis: 6378137.000
 Eccentricity: 0.81819191
 Projection: Universal Transverse Mercator Zone 8
 Central Meridian: 135°W
 Central Scale Factor: 0.9996
 False Easting: 500,000 mE

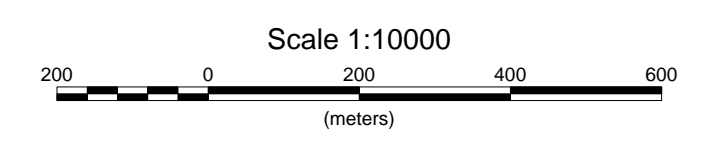


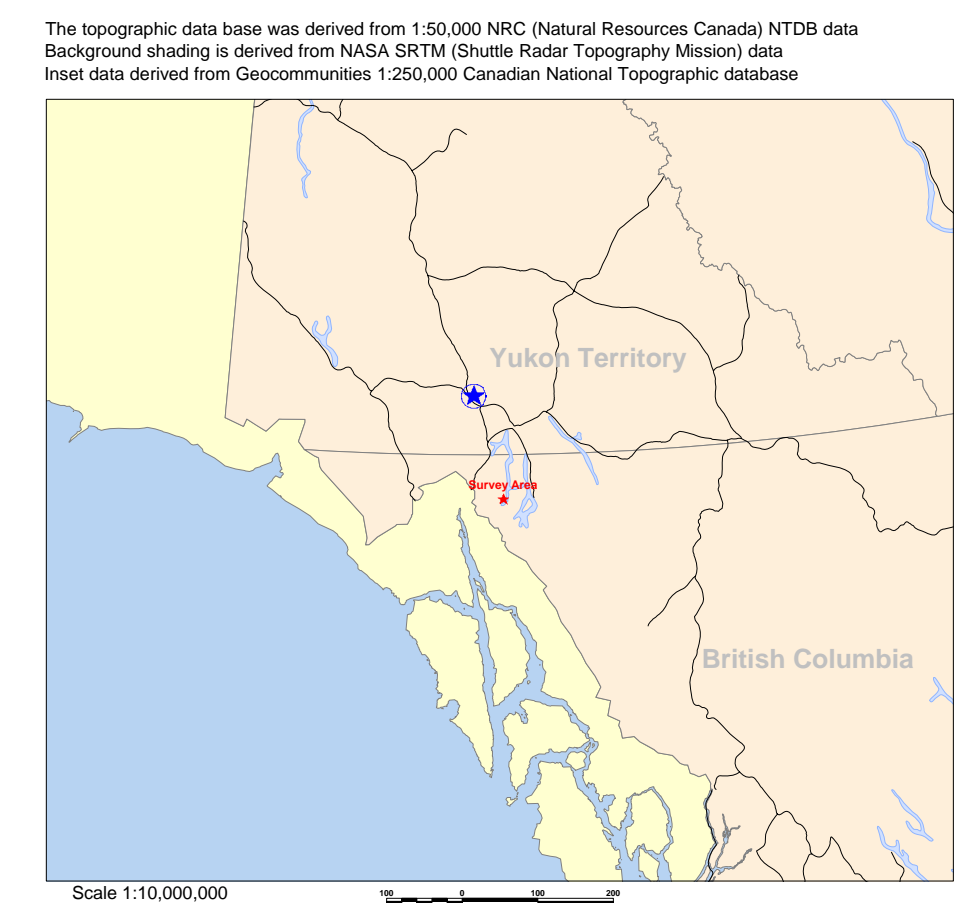
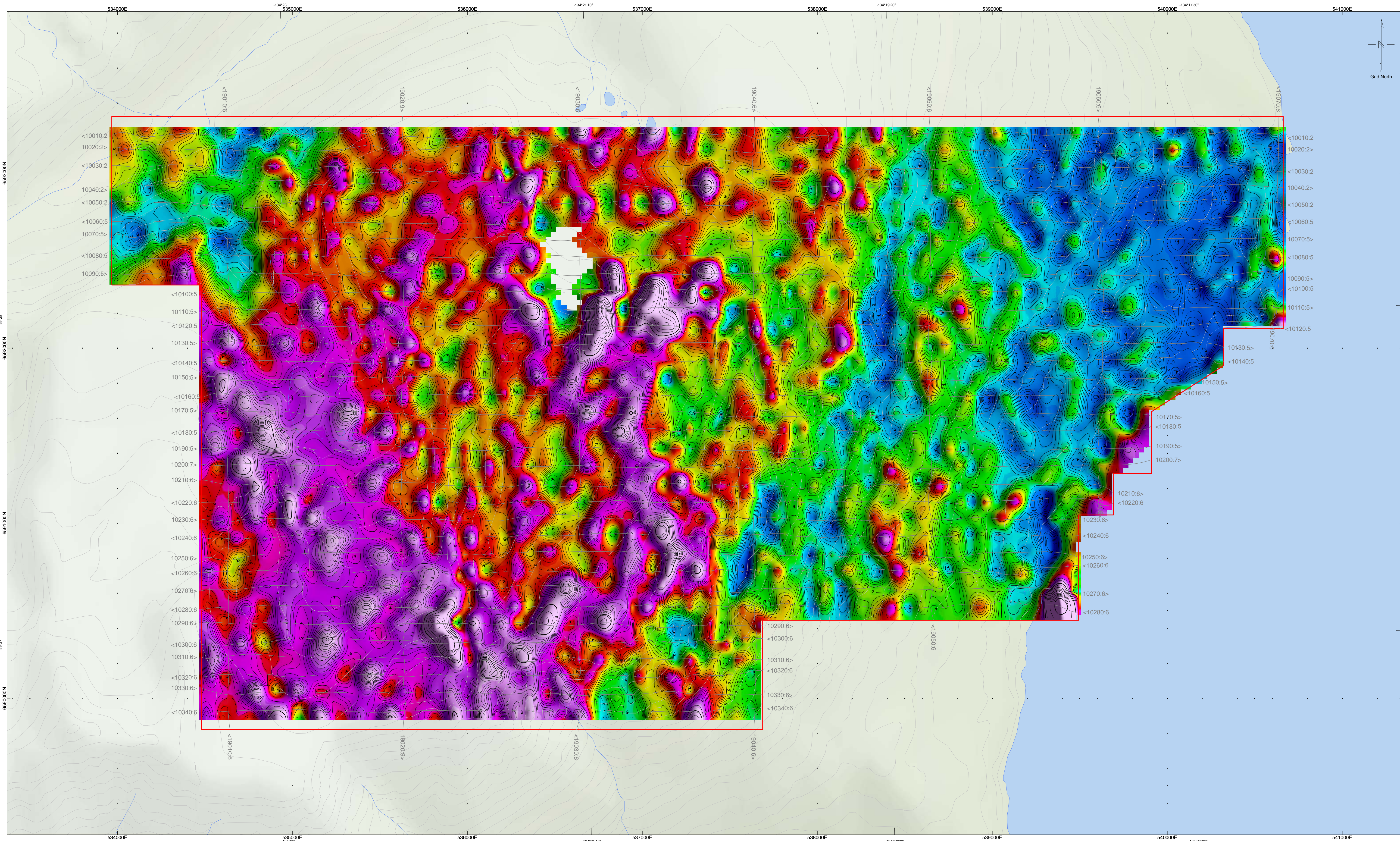
Eagle Plains Resources Ltd.
Atlin, BC

**Digital
Terrain Model
Titan**



11500 Fifth Line
 Rockwood, Ontario, Canada, N0B 2K0
 www.cmgairborne.com





Survey Specifications:

Base: Atlin, BC
 Date Flown: August 25 - 31, 2008
 Aircraft: ASter B2
 Registration: C-GPHQ
 Flight Line Spacing: 100 m
 Flight Line Direction: N90°E
 Tie Line Spacing: 1000 m
 Tie Line Direction: N0°E
 Nominal Bird Height: 45 m
 Sensor Position: 30 m below aircraft

Instrumentation:

Data Acquisition: CMG DAS
 System: Magnetic Gradiometer, VLF-EM
 Magnetometers: 3 GEM Potassium Total Field
 Vertical Separation: 2.95 m
 Horizontal Separation: 3.45 m
 Sensitivity: +/- 0.001 nT
 Heading Error: +/- 0.15 nT or less
 Gradient Tolerance: 5,000 nT/m maximum
 VLF Station # 1: LaMoure 25.2 KHz
 VLF Station # 2: Jim Creek Seattle 24.8 KHz
 VLF Sensitivity: +/- 5 pT
 Radar Altimeter: Freeflight TRA 3500 @ 10 Hz, +/- 5%
 GPS System: Novatel v4.0 @ 10 Hz, 1-5 m
 Base station Unit: GSM-19 @ 1 Hz, +/- 0.01 nT
 Spectrometer: Radiation Solution RS-500
 Crystals: 4 Downward Looking & 1 Upward Looking
 GRS Acquisition: 1024 Channel Resolution at 1Hz

Navigation:

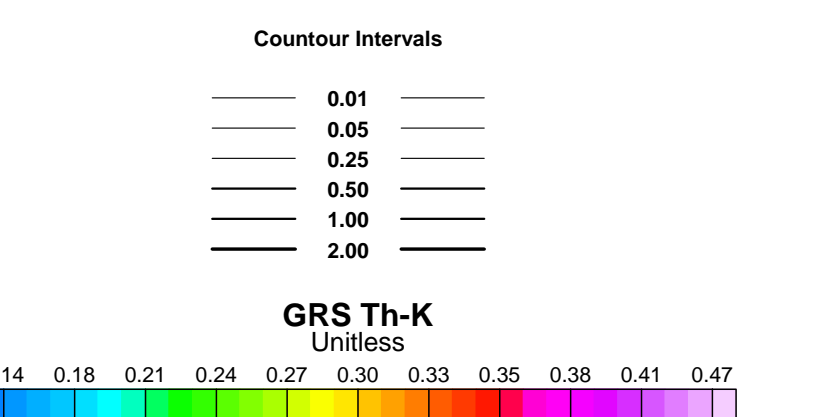
System: CD-GPS (Canadian differential)
 Equipment: AgNav Guia and Tee-Jet Receiver
 Elevation: Freeflight TRA 3500 mounted in helicopter

Data Processing:

Total Magnetic Field: Diurnal correction, tie-line, micro-leveling
 Magnetic Gradients: Heading error, micro-leveling
 VLF: DC bias, line direction

Coordinate System:

Datum: NAD83
 Major Axis: 6378737.000
 Eccentricity: 0.81819191
 Projection: Universal Transverse Mercator Zone 8
 Central Meridian: 135°W
 Central Scale Factor: 0.9996
 False Easting: 500,000 mE



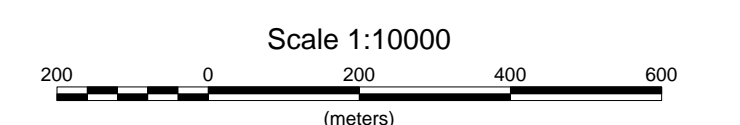
Eagle Plains Resources Ltd.
 Atlin, BC

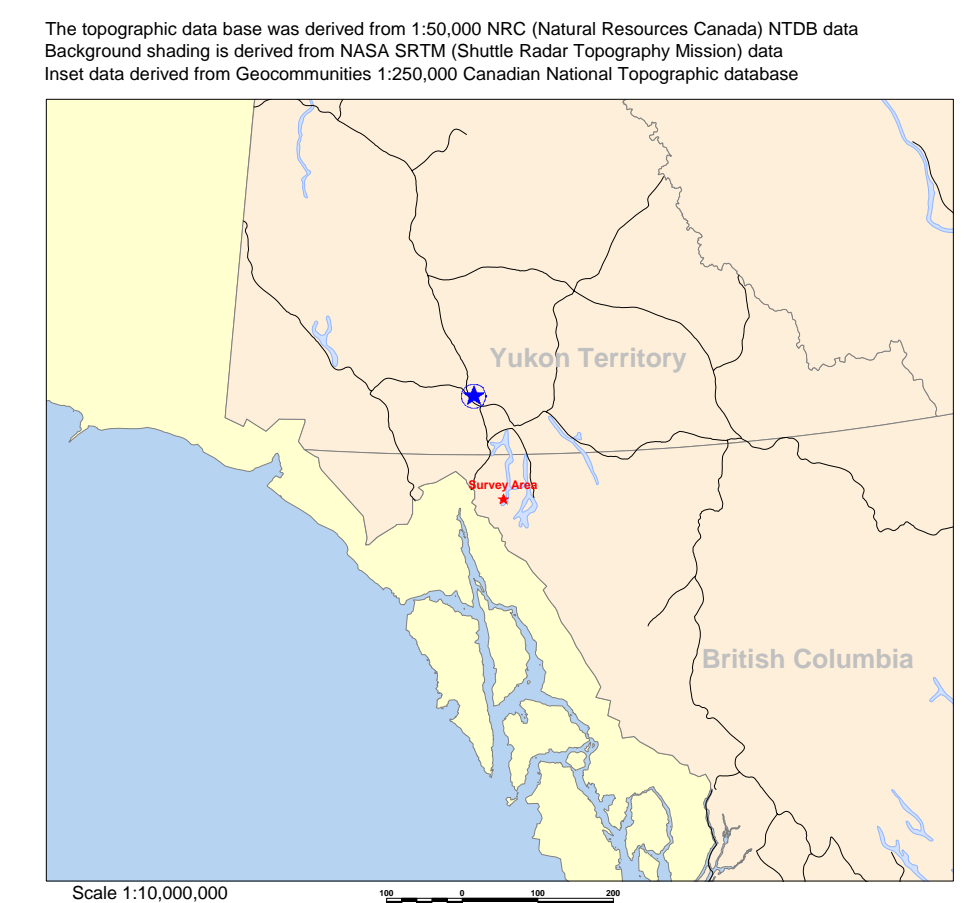
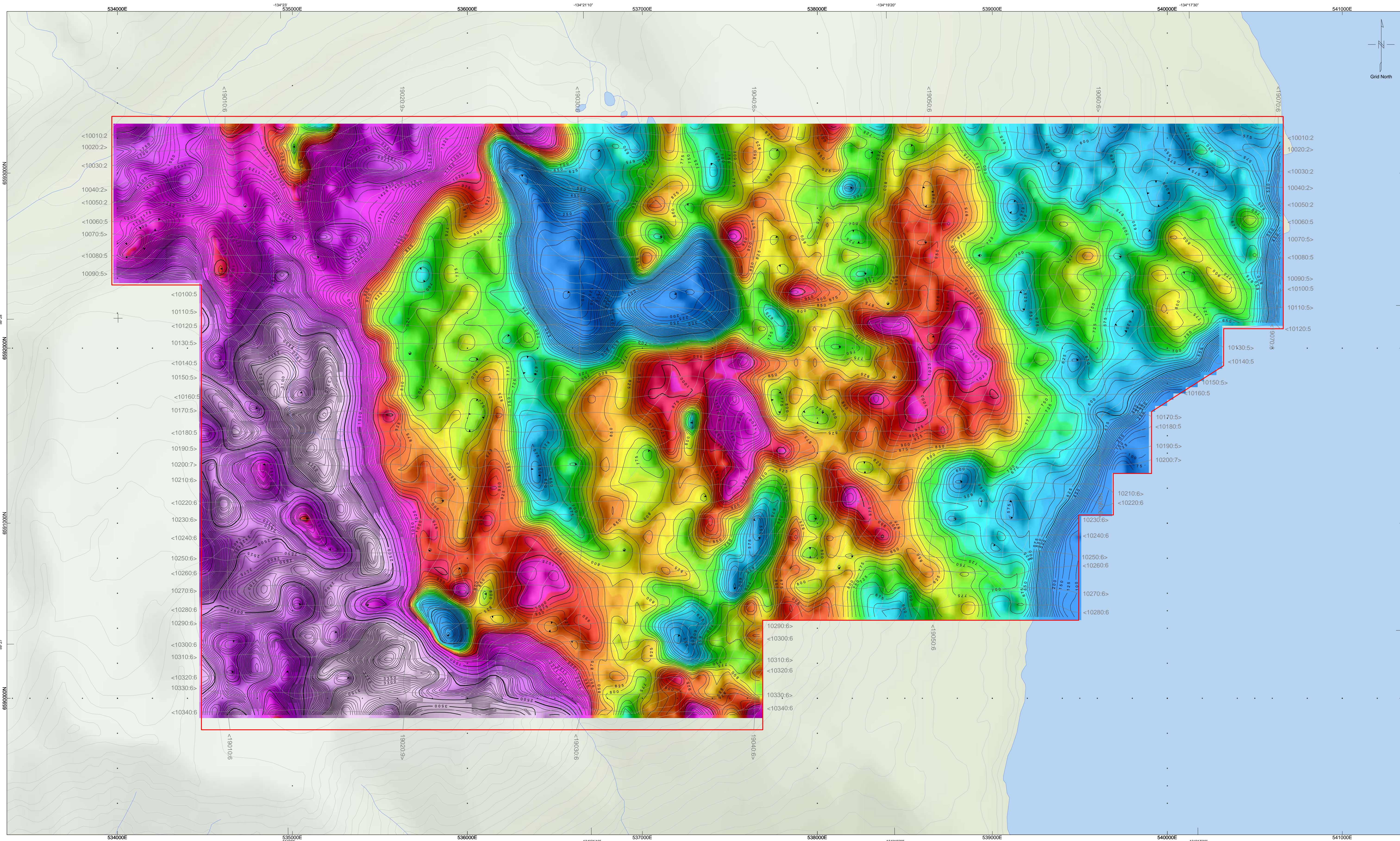
Gamma Ray Spectrometer
Thorium - Potassium Ratio

Titan



11500 Fifth Line
 Rockwood, Ontario, Canada, N0B 2K0
 www.cmgairborne.com





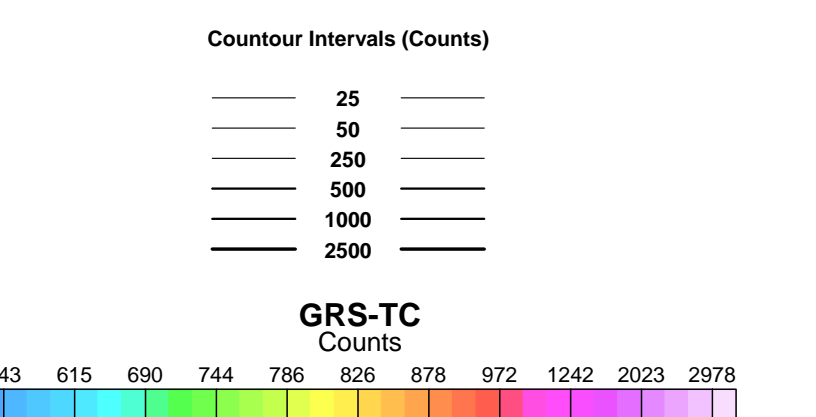
Survey Specifications:
 Base: Atlin, BC
 Date Flown: August 25 - 31, 2008
 Aircraft: ASter B2
 Registration: C-GPHQ
 Flight Line Spacing: 100 m
 Flight Line Direction: N90°E
 Tie Line Spacing: 1000 m
 Tie Line Direction: N0°E
 Nominal Bird Height: 45 m
 Sensor Position: 30 m below aircraft

Instrumentation:
 Data Acquisition: CMG DAS
 System: Magnetic Gradiometer, VLF-EM
 Magnetometers: 3 GEM Potassium Total Field
 Vertical Separation: 2.95 m
 Horizontal Separation: 3.45 m
 Sensitivity: +/- 0.001 nT
 Heading Error: +/- 0.15 nT or less
 Gradient Tolerance: 5,000 nT/m maximum
 VLF Station # 1: LaMoure 25.2 kHz
 VLF Station # 2: Jim Creek Seattle 24.8 kHz
 VLF Sensitivity: +/- 5 pT
 Radar Altimeter: Freeflight TRA 3500 @ 10 Hz, +/- 5%
 GPS System: Novatel v4.0 @ 10 Hz, 1-5 m
 Base station Unit: GSM-19 @ 1 Hz, +/- 0.01 nT
 Spectrometer: Radiation Solution RS-500
 Crystals: 4 Downward Looking & 1 Upward Looking
 GRS Acquisition: 1024 Channel Resolution at 1Hz

Navigation:
 System: CD-GPS (Canadian differential)
 Equipment: AgNav Guia and Tee-Jet Receiver
 Elevation: Freeflight TRA 3500 mounted in helicopter

Data Processing:
 Total Magnetic Field: Diurnal correction, tie-line, micro-leveling
 Magnetic Gradients: Heading error, micro-leveling
 VLF: DC bias, line direction

Coordinate System:
 Datum: NAD83
 Major Axis: 6378737.000
 Eccentricity: 0.81819191
 Projection: Universal Transverse Mercator Zone 8
 Central Meridian: 135°W
 Central Scale Factor: 0.9996
 False Easting: 500,000 mE

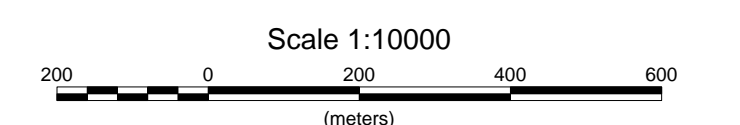


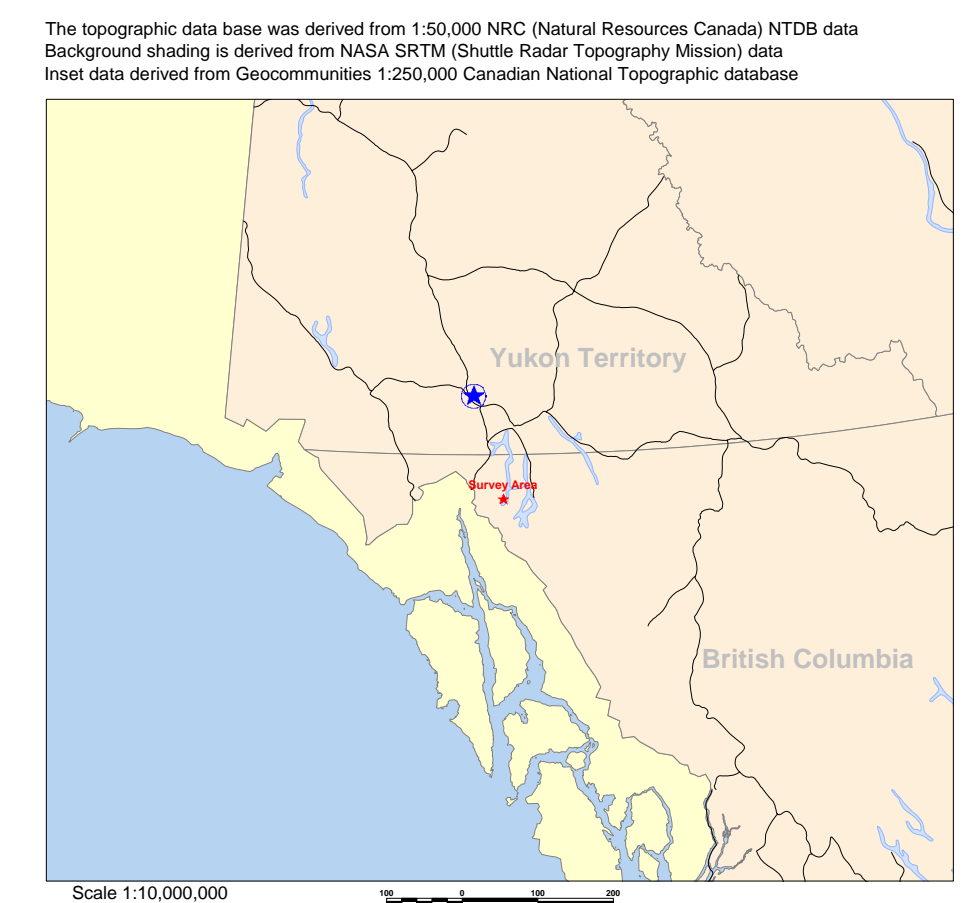
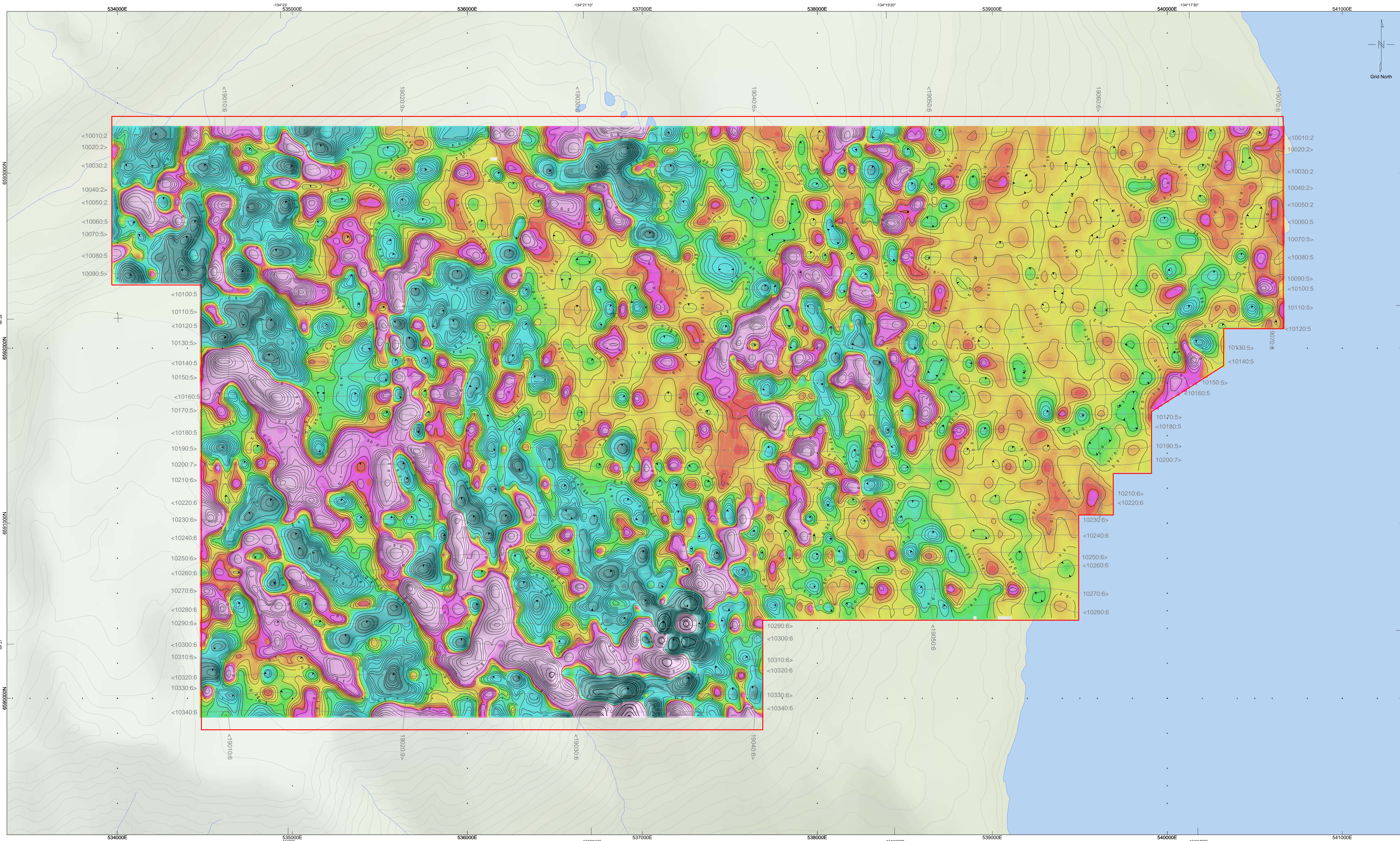
Eagle Plains Resources Ltd.
 Atlin, BC

**Gamma Ray Spectrometer
 Corrected Total Counts**

Titan

11500 Fifth Line
 Rockwood, Ontario, Canada, N0B 2K0
 www.cmgairborne.com





Survey Specifications:

Base: Atlin, BC
 Date Flown: August 25 - 31, 2008
 Aircraft: AS Star B2
 Registration: C-GPHQ
 Flight Line Spacing: 100 m
 Flight Line Direction: N90°E
 Tie Line Spacing: 1000 m
 Tie Line Direction: N0°E
 Nominal Bird Height: 45 m
 Sensor Position: 30 m below aircraft

Instrumentation:

Data Acquisition: CMG DAS
 System: Magnetic Gradiometer, VLF-EM
 Magnetometers: 3 GEM Potassium Total Field
 Vertical Separation: 2.95 m
 Horizontal Separation: 3.45 m
 Sensitivity: +/- 0.001 nT
 Heading Error: +/- 0.15 nT or less
 Gradient Tolerance: 5,000 nT/m maximum
 VLF Station # 1: LaMoure 25.2 kHz
 VLF Station # 2: Jim Creek Seattle 24.8 kHz
 VLF Sensitivity: +/- 5 pT
 Radar Altimeter: Freeflight TRA 3500 @ 10 Hz, +/- 5%
 GPS System: Novatel v4.0 @ 10 Hz, 1-5 m
 Base station Unit: GSM-19 @ 1 Hz, +/- 0.01 nT
 Spectrometer: Radiation Solution RS-500
 Crystals: 4 Downward Looking & 1 Upward Looking
 GRS Acquisition: 1024 Channel Resolution at 1Hz

Navigation:

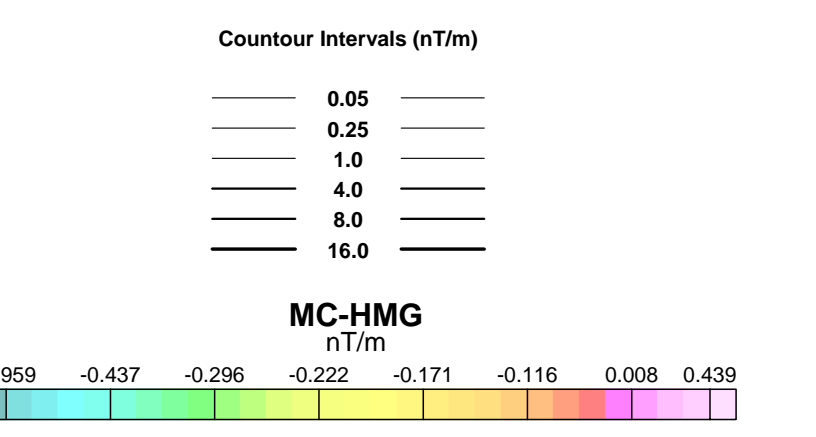
System: CD-GPS (Canadian differential)
 Equipment: AgNav Guia and Tee-Jet Receiver
 Elevation: Freeflight TRA 3500 mounted in helicopter

Data Processing:

Total Magnetic Field: Diurnal correction, tie-line, micro-leveling
 Magnetic Gradients: Heading error, micro-leveling
 VLF: DC bias, line direction

Coordinate System:

Datum: NAD83
 Major Axis: 6378737.000
 Eccentricity: 0.81819191
 Projection: Universal Transverse Mercator Zone 8
 Central Meridian: 135°W
 Central Scale Factor: 0.9996
 False Easting: 500,000 mE

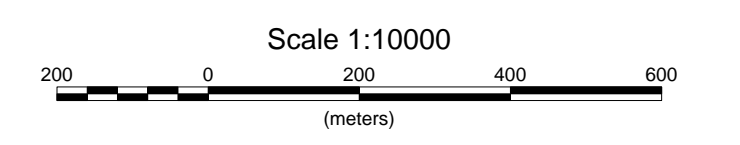


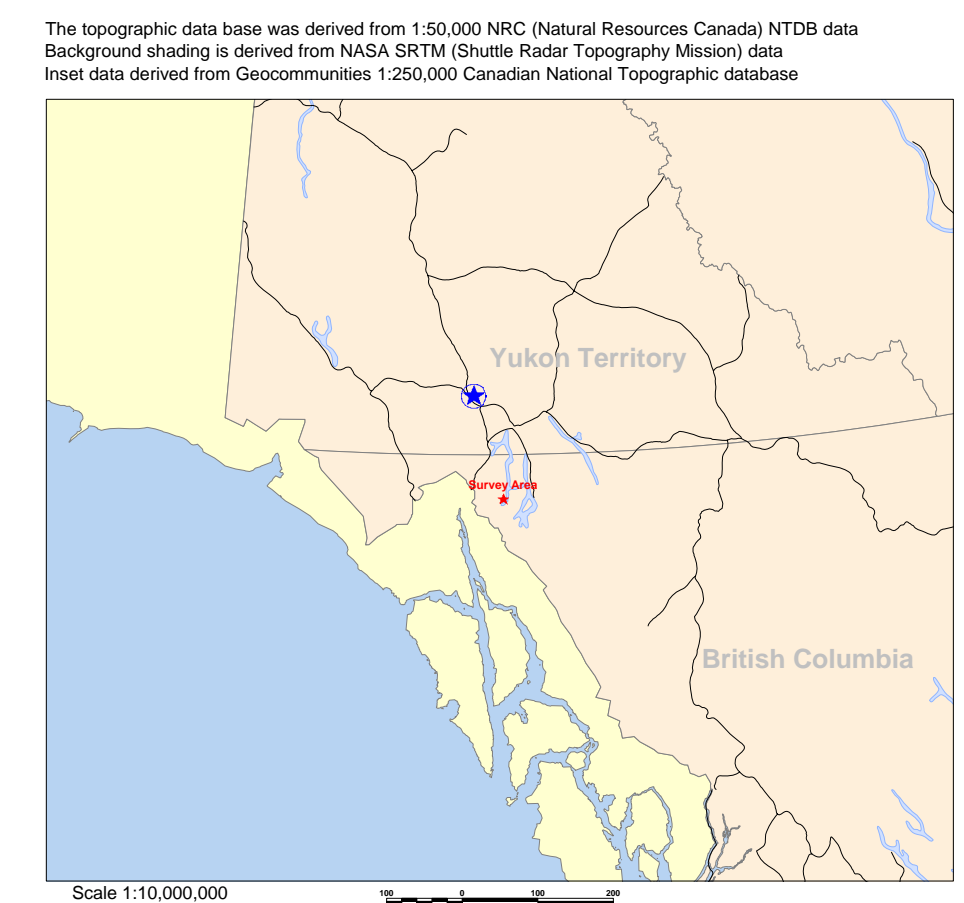
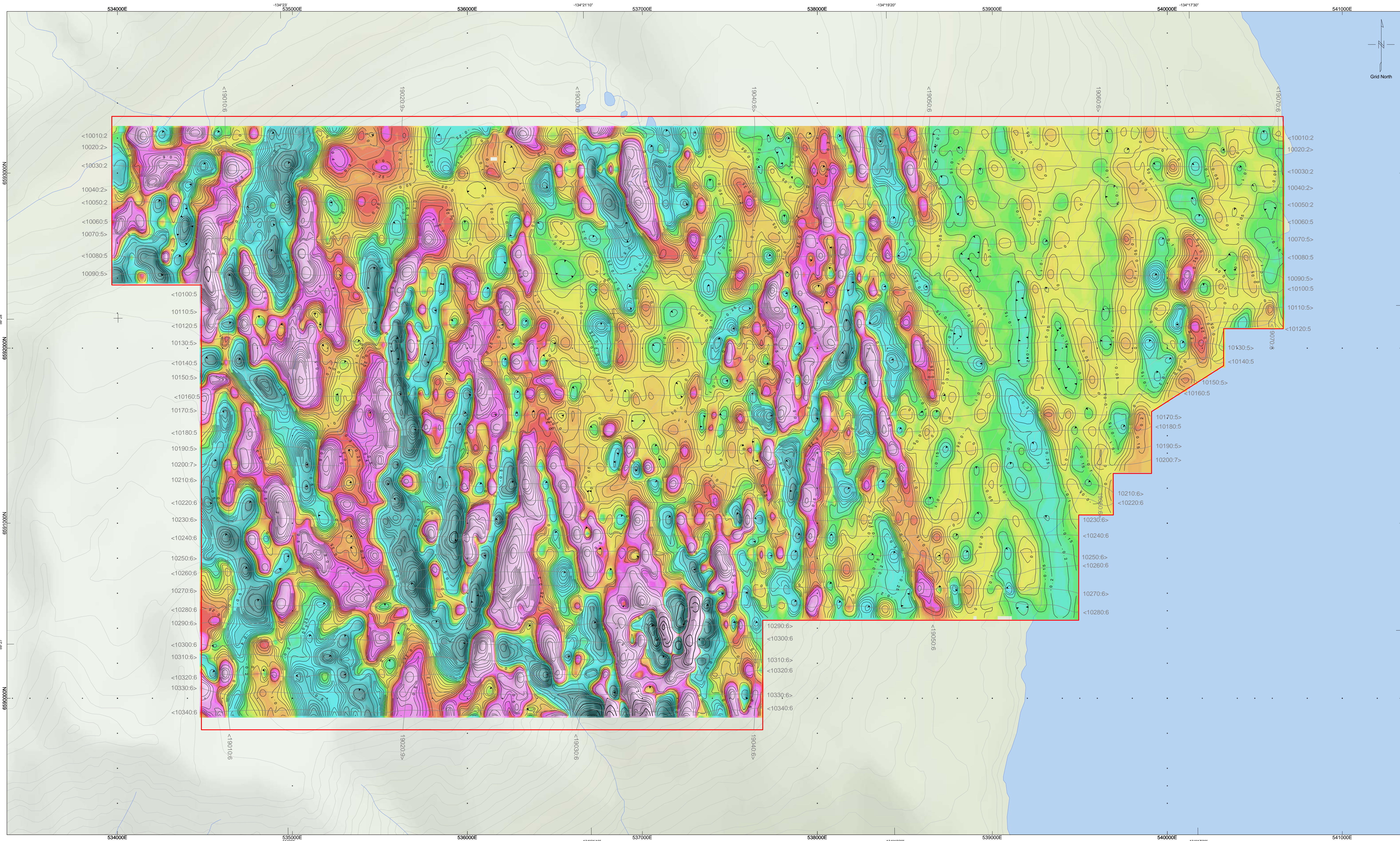
Eagle Plains Resources Ltd.
 Atlin, BC

**Measured Cross-line
 Magnetic Gradient**
 Titan



11500 Fifth Line
 Rockwood, Ontario, Canada, N0B 2K0
 www.cmgairborne.com





Survey Specifications:

Base: Atlin, BC
 Date Flown: August 25 - 31, 2008
 Aircraft: AS Star B2
 Registration: C-GPHQ
 Flight Line Spacing: 100 m
 Flight Line Direction: N90°E
 Tie Line Spacing: 1000 m
 Tie Line Direction: N0°E
 Nominal Bird Height: 45 m
 Sensor Position: 30 m below aircraft

Instrumentation:

Data Acquisition: CMG DAS
 System: Magnetic Gradiometer, VLF-EM
 Magnetometers: 3 GEM Potassium Total Field
 Vertical Separation: 2.95 m
 Horizontal Separation: 3.45 m
 Sensitivity: +/- 0.001 nT
 Heading Error: +/- 0.15 nT or less
 Gradient Tolerance: 5,000 nT/m maximum
 VLF Station # 1: LaMoure 25.2 kHz
 VLF Station # 2: Jim Creek Seattle 24.8 kHz
 VLF Sensitivity: +/- 5 pT
 Radar Altimeter: Freeflight TRA 3500 @ 10 Hz, +/- 5%
 GPS System: Novatel v4.0 @ 10 Hz, 1-5 m
 Base station Unit: GSM-19 @ 1 Hz, +/- 0.01 nT
 Spectrometer: Radiation Solution RS-500
 Crystals: 4 Downward Looking & 1 Upward Looking
 GRS Acquisition: 1024 Channel Resolution at 1Hz

Navigation:

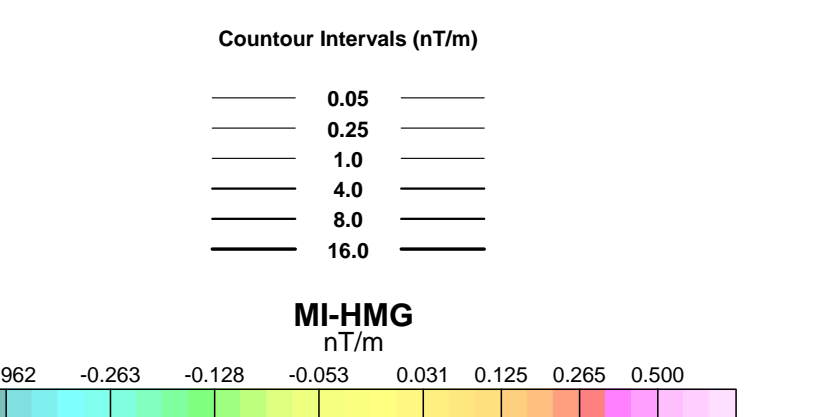
System: CD-GPS (Canadian differential)
 Equipment: AgNav Guia and Tee-Jet Receiver
 Elevation: Freeflight TRA 3500 mounted in helicopter

Data Processing:

Total Magnetic Field: Diurnal correction, tie-line, micro-leveling
 Magnetic Gradients: Heading error, micro-leveling
 VLF: DC bias, line direction

Coordinate System:

Datum: NAD83
 Major Axis: 6378737.000
 Eccentricity: 0.81819191
 Projection: Universal Transverse Mercator Zone 8
 Central Meridian: 135°W
 Central Scale Factor: 0.9996
 False Easting: 500,000 mE

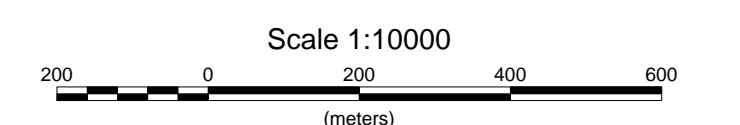


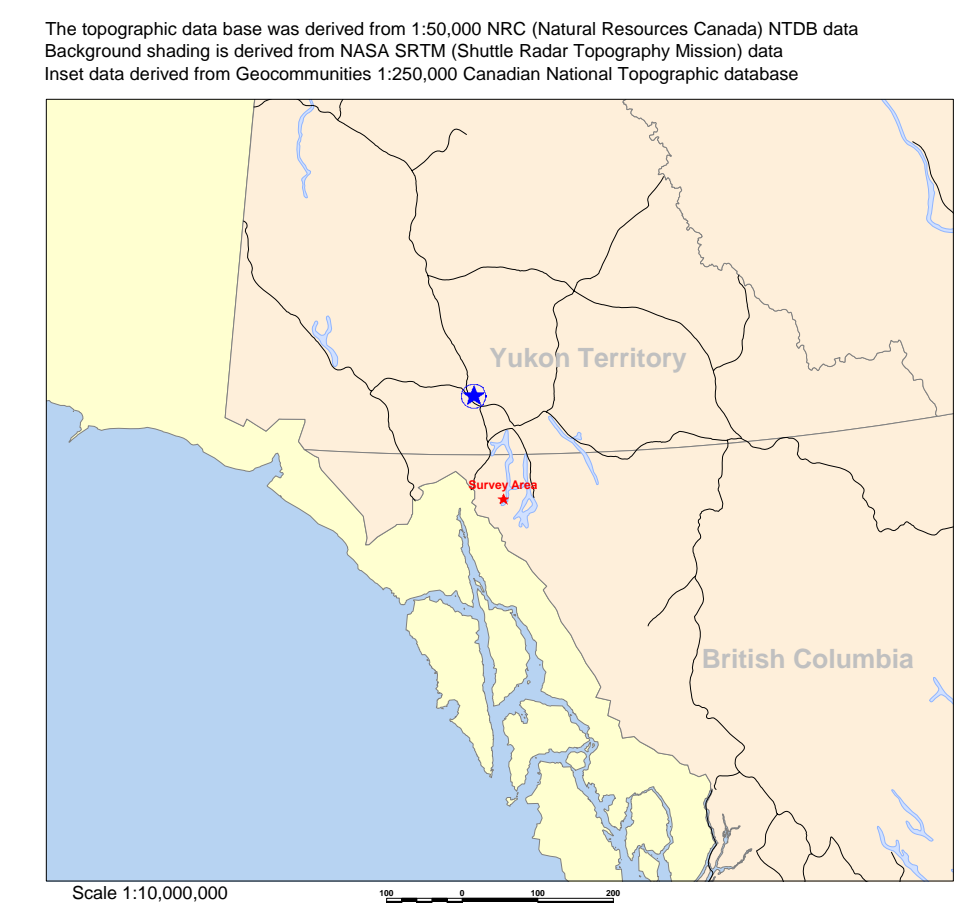
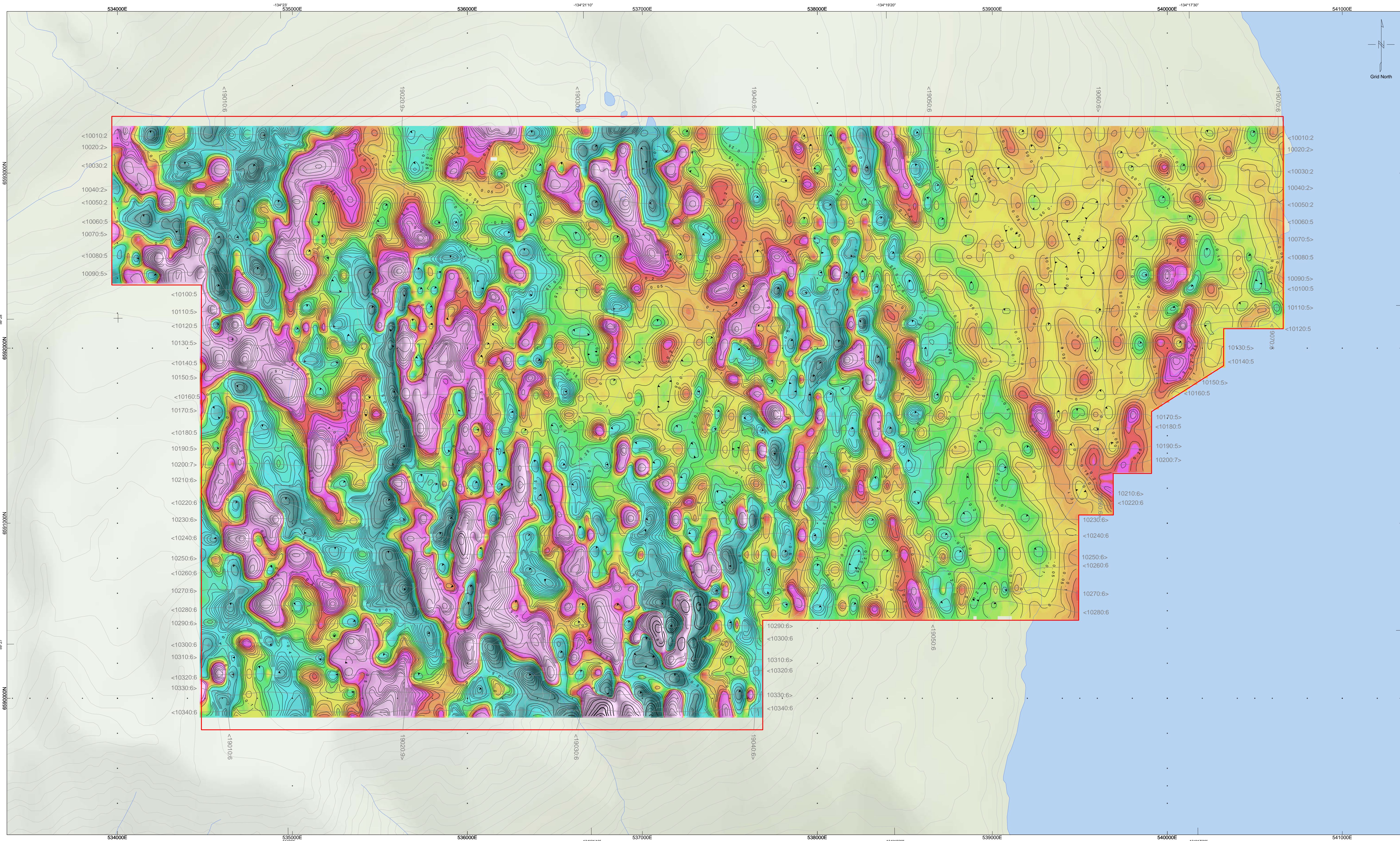
Eagle Plains Resources Ltd.
 Atlin, BC

**Measured In-line
 Magnetic Gradient**

Titan

11500 Fifth Line
 Rockwood, Ontario, Canada, N0B 2K0
 www.cmgairborne.com





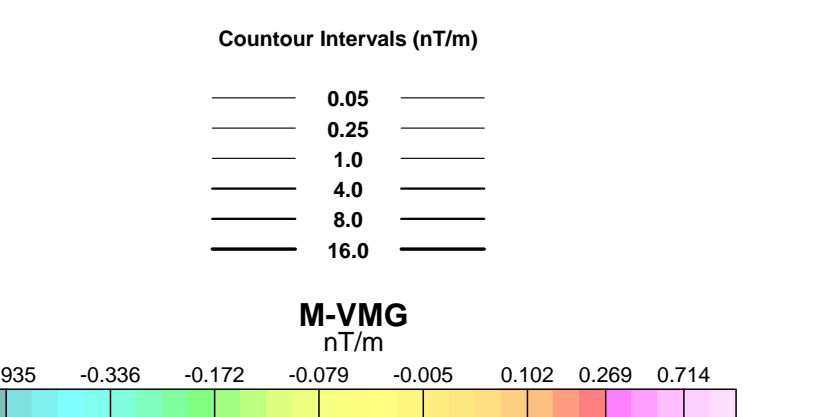
Survey Specifications:
 Base: Atlin, BC
 Date Flown: August 25 - 31, 2008
 Aircraft: ASStar B2
 Registration: C-GPHQ
 Flight Line Spacing: 100 m
 Flight Line Direction: N90°E
 Tie Line Spacing: 1000 m
 Tie Line Direction: N0°E
 Nominal Bird Height: 45 m
 Sensor Position: 30 m below aircraft

Instrumentation:
 Data Acquisition: CMG DAS
 System: Magnetic Gradiometer, VLF-EM
 Magnetometers: 3 GEM Potassium Total Field
 Vertical Separation: 2.95 m
 Horizontal Separation: 3.45 m
 Sensitivity: +/- 0.001 nT
 Heading Error: +/- 0.15 nT or less
 Gradient Tolerance: 5,000 nT/m maximum
 VLF Station # 1: LaMoure 25.2 KHz
 VLF Station # 2: Jim Creek Seattle 24.8 KHz
 VLF Sensitivity: +/- 5 pT
 Radar Altimeter: Freeflight TRA 3500 @ 10 Hz, +/- 5%
 GPS System: Novatel v4.0 @ 10 Hz, 1-5 m
 Base station Unit: GSM-19 @ 1 Hz, +/- 0.01 nT
 Spectrometer: Radiation Solution RS-500
 Crystals: 4 Downward Looking & 1 Upward Looking
 GRS Acquisition: 1024 Channel Resolution at 1Hz

Navigation:
 System: CD-GPS (Canadian differential)
 Equipment: AgNav Guia and Tee-Jet Receiver
 Elevation: Freeflight TRA 3500 mounted in helicopter

Data Processing:
 Total Magnetic Field: Diurnal correction, tie-line, micro-leveling
 Magnetic Gradients: Heading error, micro-leveling
 VLF: DC bias, line direction

Coordinate System:
 Datum: NAD83
 Major Axis: 6378737.000
 Eccentricity: 0.81819191
 Projection: Universal Transverse Mercator Zone 8
 Central Meridian: 135°W
 Central Scale Factor: 0.9996
 False Easting: 500,000 mE

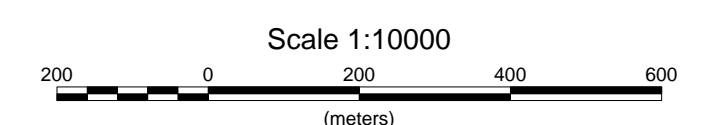


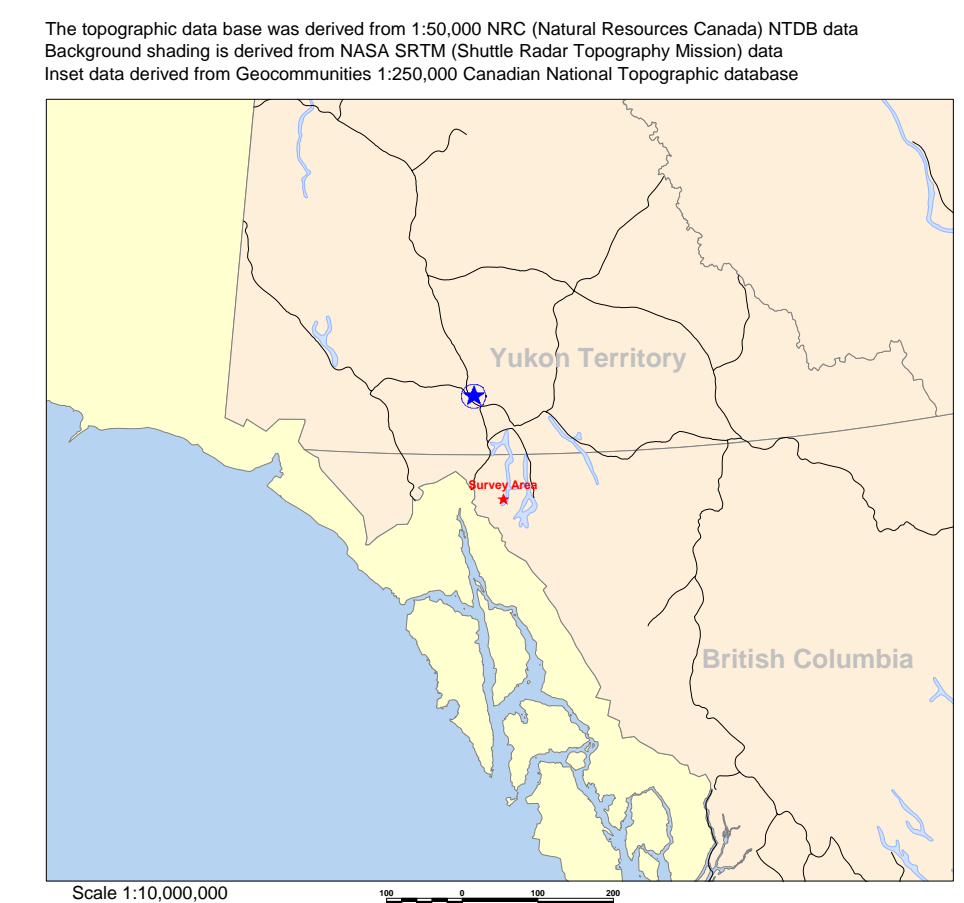
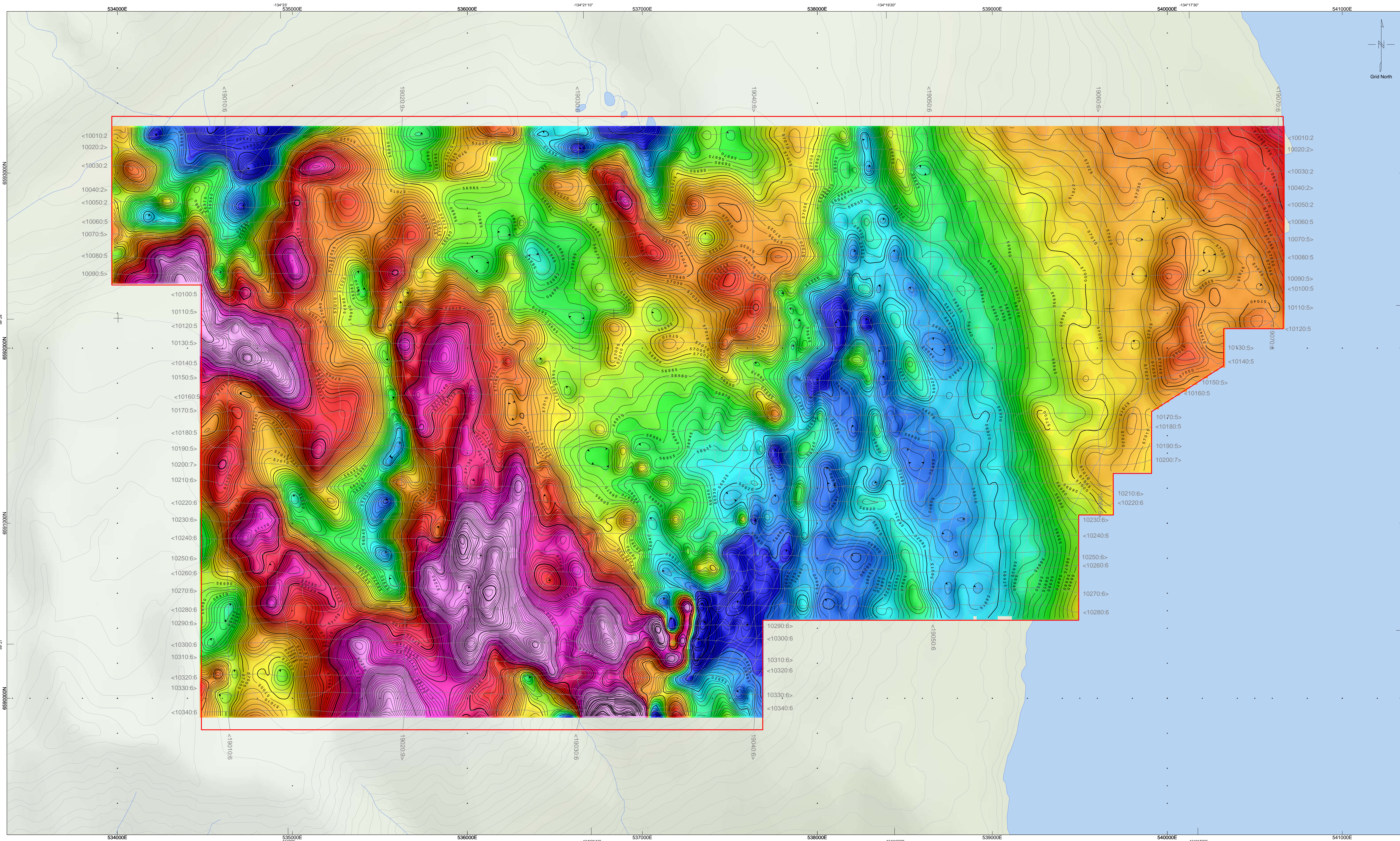
Eagle Plains Resources Ltd.
 Atlin, BC

**Measured Vertical
 Magnetic Gradient**
 Titan



11500 Fifth Line
 Rockwood, Ontario, Canada, N0B 2K0
 www.cmgairborne.com





Survey Specifications:

Base: Atlin, BC
 Date Flown: August 25 - 31, 2008
 Aircraft: ASStar B2
 Registration: C-GPHQ
 Flight Line Spacing: 100 m
 Flight Line Direction: N90°E
 Tie Line Spacing: 1000 m
 Tie Line Direction: N0°E
 Nominal Bird Height: 45 m
 Sensor Position: 30 m below aircraft

Instrumentation:

Data Acquisition: CMG DAS
 System: Magnetic Gradiometer, VLF-EM
 Magnetometers: 3 GEM Potassium Total Field
 Vertical Separation: 2.95 m
 Horizontal Separation: 3.45 m
 Sensitivity: +/- 0.001 nT
 Heading Error: +/- 0.15 nT or less
 Gradient Tolerance: 5,000 nT/m maximum
 VLF Station # 1: LaMoure 25.2 kHz
 VLF Station # 2: Jim Creek Seattle 24.8 kHz
 VLF Sensitivity: +/- 5 pT
 Radar Altimeter: Freeflight TRA 3500 @ 10 Hz, +/- 5%
 GPS System: Novatel v4.0 @ 10 Hz, 1-5 m
 Base station Unit: GSM-19 @ 1 Hz, +/- 0.01 nT
 Spectrometer: Radiation Solution RS-500
 Crystals: 4 Downward Looking & 1 Upward Looking
 GRS Acquisition: 1024 Channel Resolution at 1Hz

Navigation:

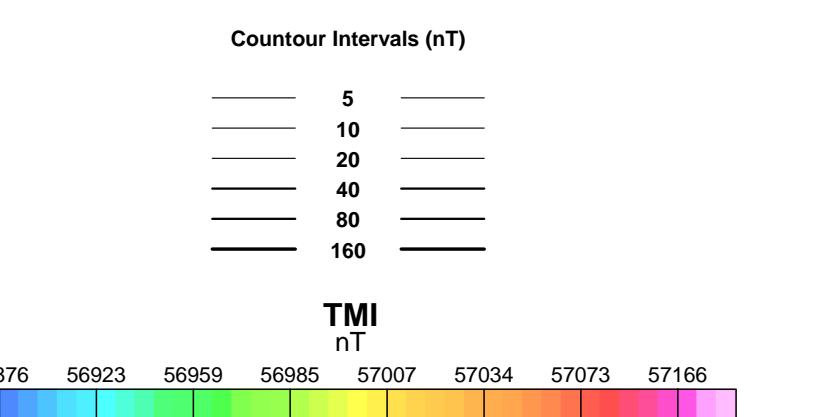
System: CD-GPS (Canadian differential)
 Equipment: AgNav Guia and Tee-Jet Receiver
 Elevation: Freeflight TRA 3500 mounted in helicopter

Data Processing:

Total Magnetic Field: Diurnal correction, tie-line, micro-leveling
 Magnetic Gradients: Heading error, micro-leveling
 VLF: DC bias, line direction

Coordinate System:

Datum: NAD83
 Major Axis: 6378737.000
 Eccentricity: 0.81819191
 Projection: Universal Transverse Mercator Zone 8
 Central Meridian: 135°W
 Central Scale Factor: 0.9996
 False Easting: 500,000 mE



Eagle Plains Resources Ltd.
 Atlin, BC

Total Magnetic Intensity
 Titan

11500 Fifth Line
 Rockwood, Ontario, Canada, N0B 2K0
 www.cmgairborne.com