



Ministry of Energy & Mines
Energy & Minerals Division
Geological Survey Branch

ASSESSMENT REPORT
TITLE PAGE AND SUMMARY

TITLE OF REPORT [type of survey(s)] ORTHOPHOTO MOSAIC MAP PREPARATION \$ TOTAL COST 25,924.51

AUTHOR(S) ARNE O BIRKELAND P. ENG. SIGNATURE(S) Arne Birkeland

NOTICE OF WORK PERMIT NUMBER(S)/DATE(S) N/A YEAR OF WORK 2008-2009

STATEMENT OF WORK - CASH PAYMENT EVENT NUMBER(S)/DATE(S) EVENT # 4248734 2009/Nov/27

PROPERTY NAME SCOTIA

CLAIM NAME(S) (on which work was done) SCOTIA TENURE NUMBERS 593613, 593898, 514510, 514511.

COMMODITIES SOUGHT Zn, Pb, Cu, Ag, Au

MINERAL INVENTORY MINFILE NUMBER(S), IF KNOWN 103 I 007

MINING DIVISION SKEENA NTS 103 I / 4 E

LATITUDE 54° 05' " LONGITUDE 129° 40' " (at centre of work)

OWNER(S)

1) GEO MINERALS LTD (210426) 2) _____
100%

MAILING ADDRESS

1220 - 789 W. PENDER ST
VANCOUVER, BC, V6C 1H2

OPERATOR(S) [who paid for the work]

1) GEO MINERALS LTD 2) _____

MAILING ADDRESS

SAME

PROPERTY GEOLOGY KEYWORDS (lithology, age, stratigraphy, structure, alteration, mineralization, size and attitude):

The Scotia Property is underlain by Paleozoic mafic to felsic volcanic rocks of the Scotia-Quall Metamorphic Complex. At the Albere Zone, massive sphalerite outcrops at the basal contact of a felsic gneiss unit. Multiple sulphide lenses (1.5 to 21 m in width) have been intersected in drilling over a 205 m strike length over a vertical range of 95 m.

REFERENCES TO PREVIOUS ASSESSMENT WORK AND ASSESSMENT REPORT NUMBERS

EMPR Ass RPT 9302, 10332, 13794, 16795, 25462, 25612

(OVER)

TYPE OF WORK IN THIS REPORT	EXTENT OF WORK (IN METRIC UNITS)	ON WHICH CLAIMS	PROJECT COSTS APPORTIONED (incl. support)
GEOLOGICAL (scale, area)			
Ground, mapping			
Photo interpretation			
GEOPHYSICAL (line-kilometres)			
Ground			
Magnetic			
Electromagnetic			
Induced Polarization			
Radiometric			
Seismic			
Other			
Airborne			
GEOCHEMICAL (number of samples analysed for ...)			
Soil			
Silt			
Rock			
Other			
DRILLING (total metres; number of holes, size)			
Core			
Non-core			
RELATED TECHNICAL			
Sampling/assaying			
Petrographic			
Mineralographic			
Metallurgic			
PROSPECTING (scale, area)			
PREPARATORY/PHYSICAL			
Line/grid (kilometres)			
Topographic/Photogrammetric (scale, area)	1:5,000; 1:2500;	8935 Ha	All
Legal surveys (scale, area)			\$23,924.51
Road, local access (kilometres)/trail			
Trench (metres)			
Underground dev. (metres)			
Other			
TOTAL COST			\$23,924.51

BC Geological Survey
Assessment Report
30579

**ASSESSMENT REPORT
ORTHOPHOTO MOSAIC MAP PREPARATION**

**SCOTIA PROPERTY
SCOTIA RIVER AREA, SKEENA MD**

NTS: 103I

Lat/Long: 54° 05' 37" N, 129° 40' 16" W

Report For
Geo Minerals Ltd.

Report Compiled By
Arnex Resources Ltd.

Report Author
A. O. Birkeland, P.Eng.

Report Date
February 20, 2009

TABLE OF CONTENTS

1. Summary 1

2. Introduction and terms of reference 1

 2.1 Terms of Reference 1

 2.2 General 2

3. Property Information 2

 3.1 Location and Access 2

 3.2 Property Description and Ownership 2

4. Orthophoto Base Map Preparation 3

5. Conclusions 3

6. References 4

7. Certificate of Author 5

LIST OF FIGURES

Figure 1: Scotia Property - Location Map (1:5,000,000) 1

Figure 2: Scotia Property - Property Location Map (1:500,000) 2

Figure 3: Scotia Claims (1:100,000) 3

LIST OF TABLES

Table 1: Scotia Property - Claim Tenure 1

LIST OF APPENDICIES

- Appendix A – Statement of Expenditures
- Appendix B – Mineral Claim Exploration and Development Work – Event 4248734
- Appendix C – Scotia-A.dwg to Scotia-C.dwg.; Topo-5K-1.dwg to Topo-5K-8.dwg

1. SUMMARY

The Scotia Prospect is located in the Scotia River area, approximately 40 km southeast of Prince Rupert in west central British Columbia. The Scotia group of claims consists of four cell mineral claims that total 8935.4 hectares in area.

Infrastructure in the area is good, with all of the main valleys in the area accessible by logging roads. A rail line is located along the north bank of the Skeena River, and electric power is available on the south bank of the Skeena River. Current access is by helicopter.

The property lies within a belt of Paleozoic metavolcanic and metasedimentary rocks trending approximately north-south between the Skeena River to the north and the Ecstall River to the south. The volcanic rocks have been subjected to upper amphibolite grade metamorphism during three periods of folding and are now represented by amphibolites, gneisses and schists. The lithologies underlying the Scotia property belong to a metavolcanic unit which is intruded by the Ecstall granite along the west side of the property, and by several stages of dioritic to pegmatitic dykes.

North and south of the Ecstall River, several occurrences of VMS-type zinc (+/- copper-lead-silver-gold) are known occur in what is called the “Ecstall Belt”.

The Albere Zone at the Scotia Property was discovered by Texas Gulf Sulphur in 1958 during a regional reconnaissance program. The Albere Zone is characterized by coarsely crystalline, massive to semi-massive sphalerite with lesser amounts of pyrite, galena, pyrrhotite, magnetite and chalcopyrite. Since that time, several exploration programs, including diamond drilling, have been carried out on the property.

Orthophoto – Topographic Base Maps were compiled during November, 2008 and are presented in this Assessment Report.

2. INTRODUCTION AND TERMS OF REFERENCE

2.1 Terms of Reference

Geo Minerals Ltd. (“Geo Minerals”) has authorized Arne O. Birkeland, P.Eng. of Arnex Resources Ltd. (“Arnex”) to act in the capacity as an independent Qualified Person to supervise a base map preparation program and to author an Assessment Report on the Scotia mineral occurrence (the “Property”) located in the Skeena Mining Division, Scotia River Area, northern BC.

2.2 General

The objective of the Assessment Report is to document the compilation of orthophoto mosaic topographic mapping conducted on the property by Eagle Mapping Ltd.

The mapping program was carried out by Eagle between the dates of Nov, 13 to Nov, 24, 2009. Total cost of the of the orthophoto map preparation was \$24,313.01 as reported in Schedule A, Statement of Expenditure. A Statement of Mineral Exploration and Development Work, (Appendix B), Event Number 4248734, in the amount of \$23,924.51 was filed on Nov 27, 2009.

Sources of information and data used in the preparation of the mapping include:

- Ministry of Energy and Mines (“MEM”) Trim data;
- MEM colour airphotos flown June 08, 2008.

3. PROPERTY INFORMATION

3.1 Location and Access

The Scotia Prospect is located in the Scotia River area, approximately 40 km southeast of Prince Rupert in west central British Columbia (Figure 1). The property lies within a belt of metavolcanic and metasedimentary rock trending approximately north-south between the Skeena River to the north and the Ecstall River to the south (Figure 2). Access is by helicopter from Prince Rupert or by barge from Kwinitza on the north shore of the Skeena River to the Scotia River logging camp on the south shore of the Skeena River, owned by Interfor (International Forest Products) and operated by Bear Creek Contracting of Terrace, BC (Figure 2).

3.2 Property Description and Ownership

The Scotia group of claims consists of four cell claims totaling 4,988 hectares that were owned by Geo Minerals Ltd, owner number 210426.

Tenure information is contained in Table 1. The claims are plotted on Figure 3, Scotia Claims.

Table 1

Tenure Number	Owner	Good To Date	Area Ha
593613	210426 (100%)	2009/Aug/31	7930.3
593898	210426 (100%)	2009/Nov/05	379.2
514510	210426 (100%)	2009/Nov/05	379.4
514511	210426 (100%)	2009/Nov/05	246.4
Totals	4 Claims		8935.4

4. ORTHOPHOTO BASE MAP PREPARATION

Orthophoto base maps were prepared for the entire property using a combination of colour aerial photography and Trim, and for selected areas, orthophotographically corrected topographic data. Detailed maps with 10 metre contour intervals are contained in Appendix C, Scotia-A.dwg to Scotia-C.dwg. Property scale maps with a 20 metre contour interval are contained in Appendix C, files Topo-5K-1.wdg to Topo-5K-8.dwg.

5. CONCLUSIONS

The property scale orthophoto topographic maps with contour interval of 20 metres and the more detailed selected orthophoto topographic maps with contour interval of 10 metres will be very useful as base maps for plotting data acquired by both historical and future exploration programs.

Assessment Report dated this 20th day of February, 2009 by

“signed” *Arne O Birkeland*

Arne O. Birkeland, P. Eng.

6. REFERENCES

Alldrick, D.J. and Gallagher, C. S. Geology of the Ecstall Belt, Coast Mountains, BC. Ministry of Energy and Mines, GSB.

Birkeland, A.O. and Lindinger, L. 1998. Diamond Drilling Report on the Albere Zone, Scotia Property. Arnex Resources Ltd.

Birkeland, A.O. 2001. Summary Report, Reclamation Program on the Scotia Mineral Property. Arnex Resources Ltd

Birkeland, A.O. 2005. Geological – Geochemical Assessment Report, Scotia Property, Scotia River Area, Skeena MD. Arnex Resources Ltd

Birkeland, A.O. 2007. Assessment Report, Scotia Property, Scotia River Area, Skeena MD. Arnex Resources Ltd

DeLancey, P.R. 1977. Report on the West Scotia Property. 8 pages plus attachments. Unpublished Company Report. Texasgulf Inc.

DeLancey, P.R. 1980. West Scotia Drilling Program. Texasgulf Inc.

DeLancey, P.R. 1981. Report on Diamond Drilling on the Albere 2 M.C. (part of the WEST SCOTIA Property). Kidd Creek Mines Ltd. GSB Assessment Report 9,302.

Eldridge, R. 1983. A Structural Analysis of the West Scotia Property, British Columbia, Unpublished B.Sc. Thesis. 70 pp. Bryn Mawr College, Department of Geology.

Falconbridge Minerals Ltd., 1960. Unpublished Diamond Drill Logs.

Gareau, S.A. 1991. Geology of the Scotia-Quaal metamorphic belt, Coast Plutonic Complex, British Columbia. 390 pp. Unpublished Ph.D. Thesis, Carleton University Department of Geology.

Gareau, S.A. 1991. The Scotia-Quaal metamorphic belt: a distinct assemblage with pre-early Late Cretaceous deformational and metamorphic history, Coast Plutonic Complex, British Columbia. in Canadian Journal of earth Sciences, Vol. 28, No. 6. pp873-:880.

Graff, B. 2001. Report of Inspector of Mines, Reclamation and Permitting.

Hendrikson G.A. and Geoph, P. 1987. Geophysical Surveys, Scotia Project. Kidd Creek Mines Ltd., 13 pp. plus attachments. GSB Assessment Report 16,795.

Hilker, R.G. 1985. Scotia Zinc Property, 1984 Exploration Drill Program, Geological Evaluation Report for Andaurex Resources Ltd., 38 pp. GSB Assessment Report 13,794.

John Berry Associates. 2006. Remote Sensing Interpretation, Scotia Area.

Krage, S.M. 1984. Metamorphic Fluid Inclusion Study of Amphibolite - grade rocks West Scotia, British Columbia. 98 pp. Unpublished M.A. Thesis, Bryn Mawr College, Department of Geology.

Manojlovic, P.M. and Fournier, J.D. 1987. Geological and Geophysical Survey, Scotia Property. 6 pages plus attachments.

Ministry of Energy and Mines. 2001. Geochemistry of the Ecstall Greenstone Belt. GSB OF 2001-13.

Money, D.P. 1989. Scotia Project Review. Falconbridge Limited.

Myers, R.E. and Moreton, E.P. 1981. Final Report on the Geology, Geophysics and Diamond Drilling Programmes, West Scotia Property. Unpublished Kidd Creek Mines Ltd. report. GSB Assessment Report 10,332.

7. CERTIFICATE OF AUTHOR

ARNE O. BIRKELAND, P.ENG.

Arnex Resources Ltd.

2069 Westview Drive

North Vancouver, BC, Canada, V7M 3B1

Telephone/Fax: (604) 904-0606

Email: arnex@shaw.ca

I, Arne O. Birkeland, P.Eng., do hereby certify that:

1. I am currently employed as a Geological Engineer by:
Arnex Resources Ltd.

2069 Westview Drive,
North Vancouver, British Columbia, Canada,
V7M 3B1

2. I graduated with a Bachelor of Science Degree in Geological Engineering from the Colorado School of Mines in 1972. I am a 1969 graduate of BCIT obtaining a Diploma of Mining Technology.
3. I have been a practicing Professional Engineer registered with the Association of Professional Engineers and Geoscientists of British Columbia since 1975, Registration Number 9870. I am a member of the Canadian Institute of Mining, Metallurgy, and Petroleum, Geological Society Member Number 90102. I am a member of the Association of Mineral Exploration of British Columbia.
4. I have worked as a geologist for a total of 35 years since my graduation from university. My primary employment since 1966 has been in the field of mineral exploration and development. My experience has encompassed a wide range of geological environments including extensive experience in classification of deposit types as well as considerable familiarization with geochemical and geophysical survey techniques and diamond drilling procedures. Since 1990, my primary involvement in exploration activities has been focused on the BC Cordillera, primarily exploring for Volcanogenic Massive Sulphide and Porphyry type targets.
5. I am responsible for the preparation of the report titled Assessment Report, Scotia Property, Skeena Mining Division, BC relating to the Scotia Property. I have personally conducted and supervised the exploration fieldwork carried out by Arnex Resources Ltd. during 1997, 1998, 1999, 2002, 2005 and 2006, and the current base map preparation program on the subject Scotia Property. Arnex Resources Ltd. currently acts as an independent consultant and contractor for Geo Minerals Ltd.

Dated at North Vancouver, British Columbia, this 20th day of February, 2009

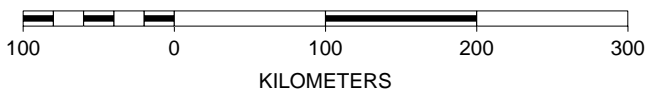
“signed” *Arne O Birkeland*

Arne O. Birkeland, P. Eng.
President, Arnex Resources Ltd.

Scotia Property - Location Map



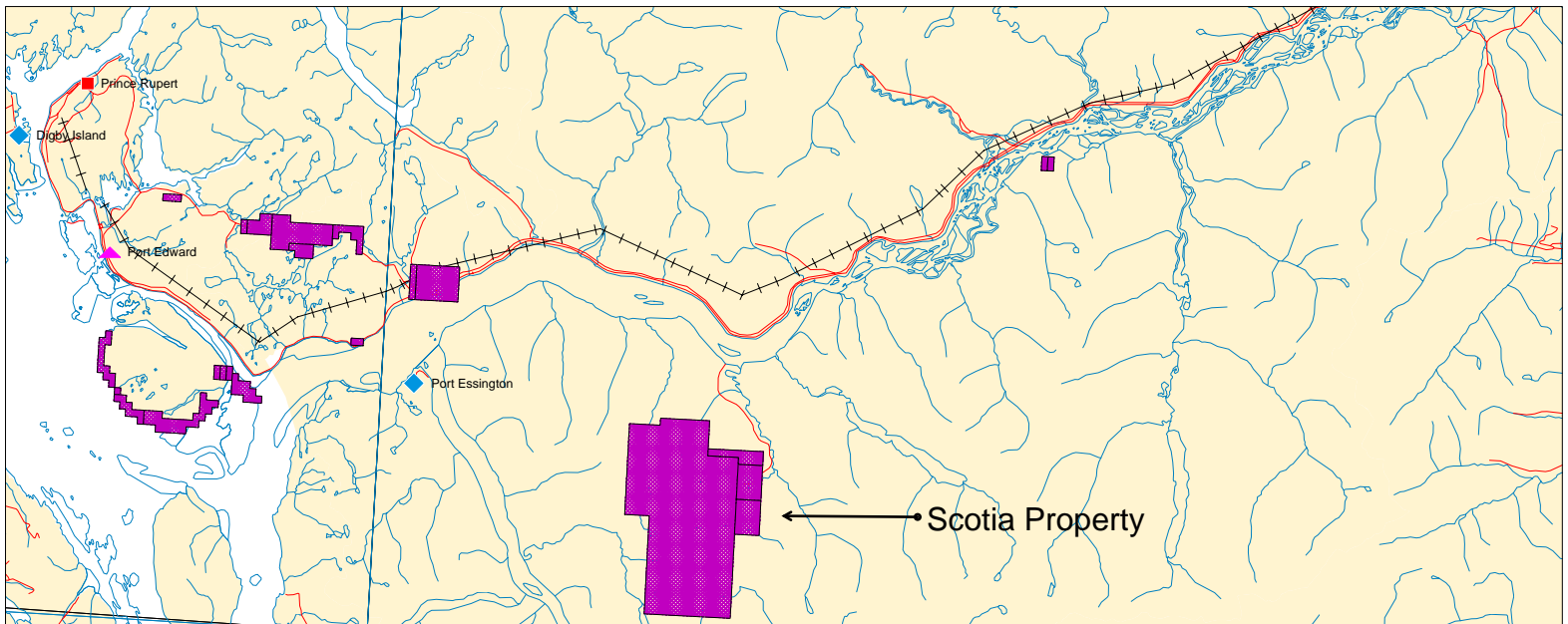
SCALE 1 : 5,000,000



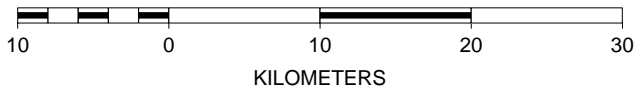
Compiled By:
Arnex Resources
Ltd.

Figure 1

Scotia Property - Property Location Map



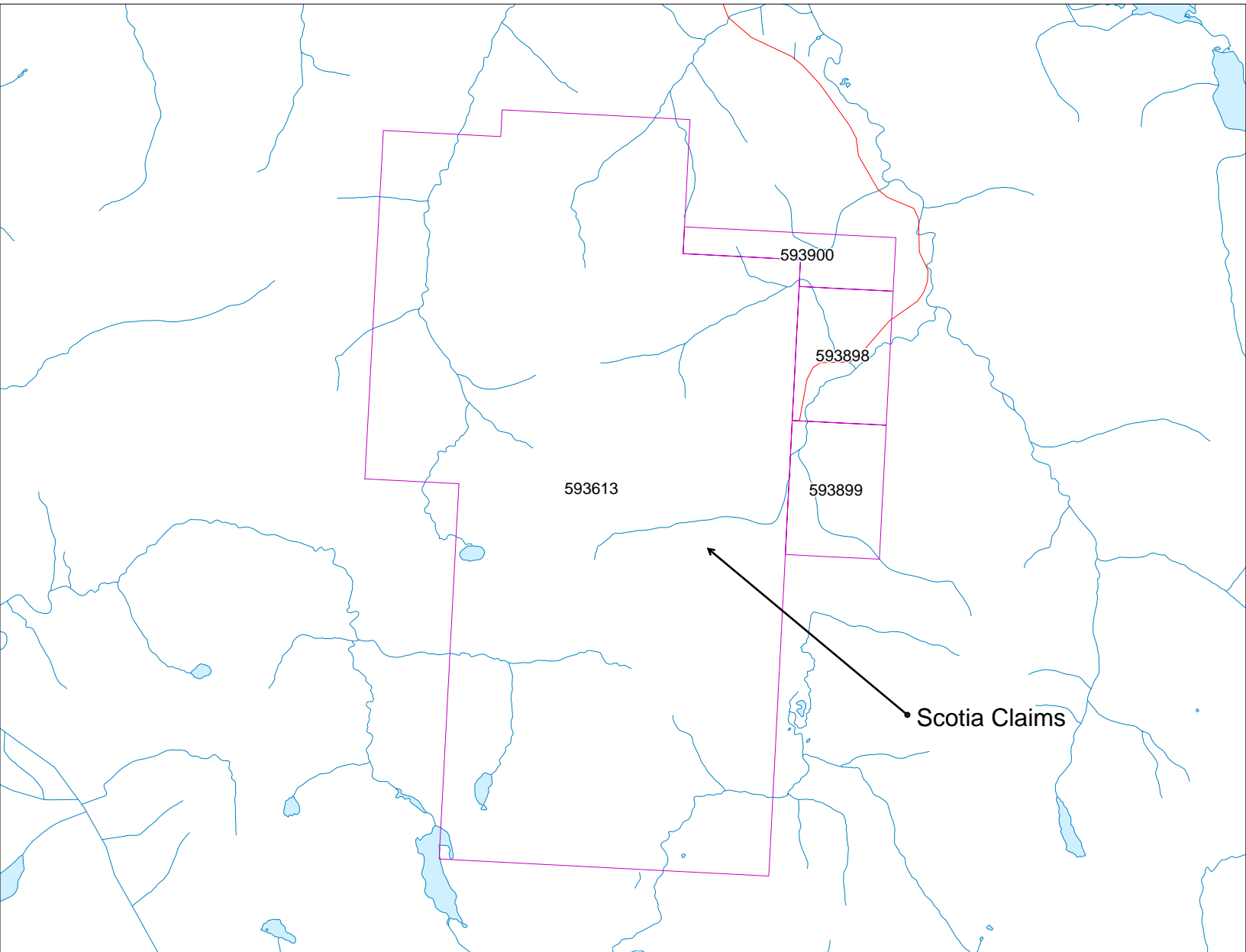
SCALE 1 : 500,000



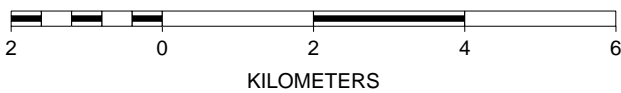
Compiled By:
Arnex Resources
Ltd

Figure 2

Scotia Claim Map



SCALE 1 : 100,000



Scotia Project
Appendix A - Statement of Expenditure
Re: Orthophoto Map Preparation

Prepared By: Arnex Resources Lt
Prepared For: Geo Minerals Ltd
Date: 27-Nov-08

Orthophoto Mosaic Maps

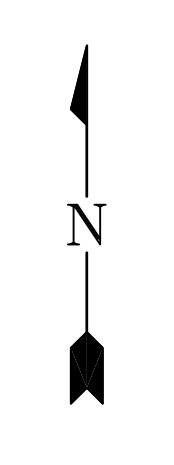
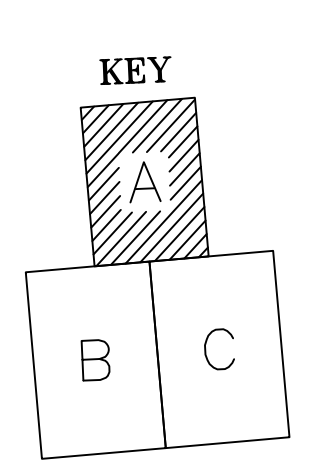
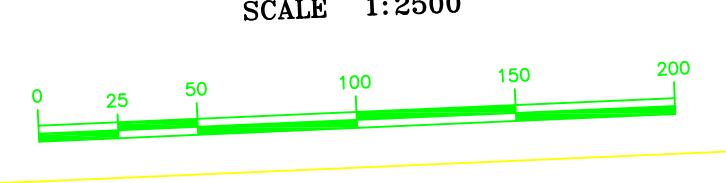
Description	Total Cost
Orthophoto Map Preparation - Eagle Mapping	\$16,335.00
Assessment Report	\$3,800.00
Management Fee @ 15%	<u>\$3,020.25</u>
GST @ 5%	<u>\$1,157.76</u>
Total Payments	\$24,313.01



PRODUCED FROM AERIAL PHOTOGRAPHY FLOWN: June 08 /2008
 PHOTO SCALE: 1:20,000
 CONTROL BY: TRIM HAD 83 ZONE 9
 HORIZONTAL DATUM: GEODETIC
 VERTICAL DATUM: Feb. 06 /2009
 REVISION: 02
 REV. DATE:
 APPROVED: TC

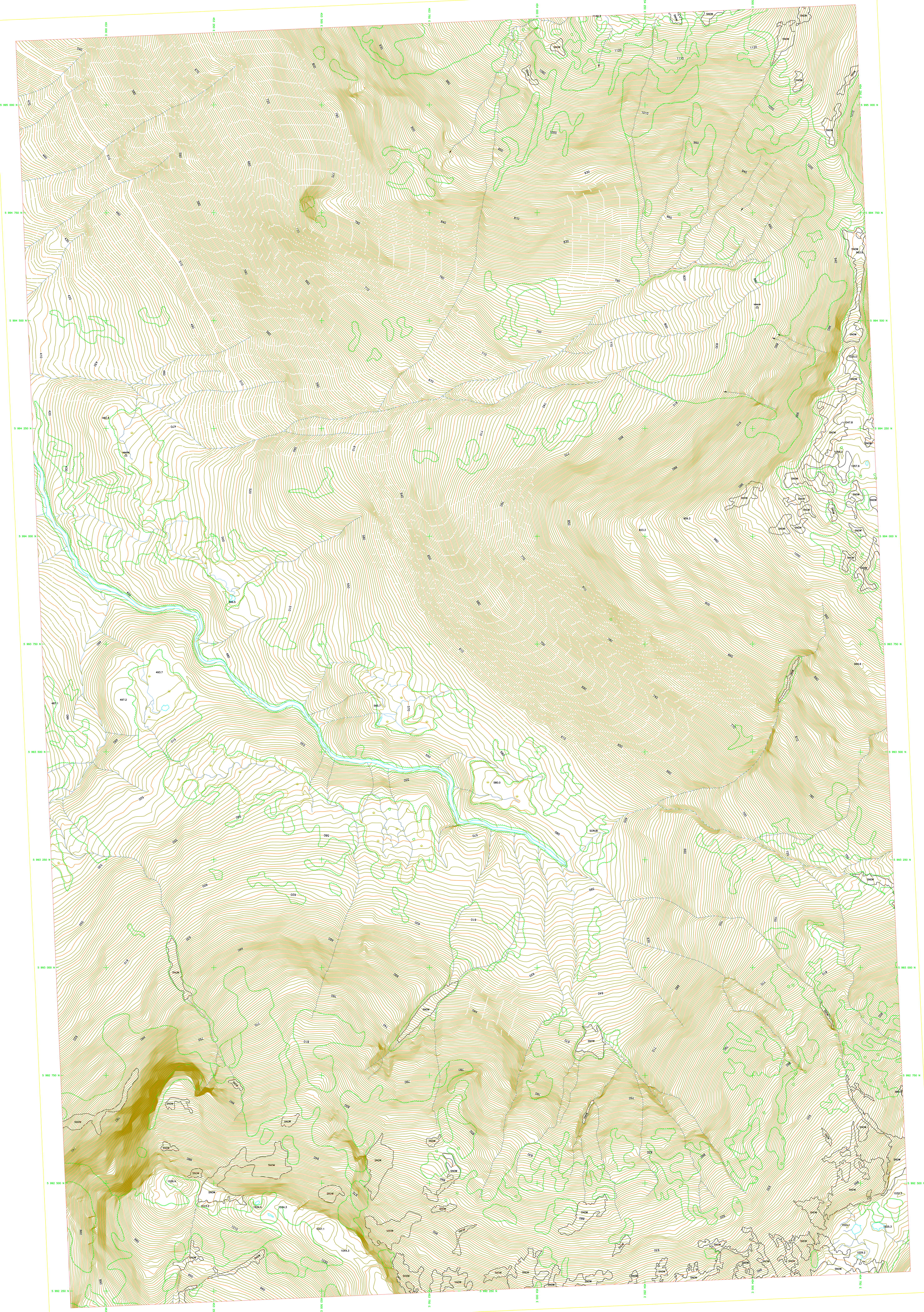
LEGEND	
INDEX CONTOUR	240
INTERMEDIATE CONTOUR	
DEPRESSION CONTOUR	
RIVER	
STREAM	
PERMANENT STREAM	
INTERMITTENT STREAM	
RAILROAD	
GRAVEL ROAD	
ROUGH ROAD	
FOOTPATH	
AREA OUTLINE	
FENCE	
BUILDING	
TREES	
SCRUB	
SINGLE TREE	
POLE HEIGHT	3771.0
SWAMP	
CULTIVAT	
PHOTO CENTER	

SCOTIA PROPERTY
ARNEX RESOURCES LTD.
 CONTOUR INTERVAL: 2m
 SCALE: 1:2500



COMPILED BY: EAGLE MAPPING LTD.
 PROJECT NO.: 08-083
 URL: www.eaglemapping.com

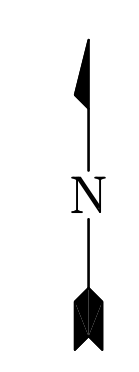
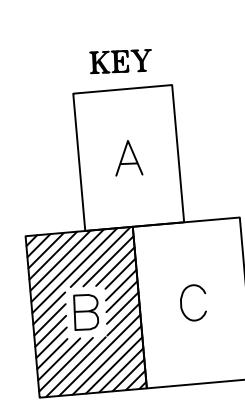




PRODUCED FROM AERIAL PHOTOGRAPHY FLOWN: June 08 /2008
 PHOTO SCALE: 1:20,000
 CONTROL BY: TMN
 HORIZONTAL DATUM: UTM NAD 83 ZONE 9
 VERTICAL DATUM: GEOIDETIC
 REVISION: 00
 REV. DATE: Feb. 06 /2009
 APPROVED: TC

LEGEND	
INDEX CONTOUR	240
INTERMEDIATE CONTOUR	
DEPRESSION CONTOUR	
SPRING	
STATION	
WATERLINE STREAM	
PERMANENT STREAM	
ROAD	
GRAVEL ROAD	
ROUGH ROAD	
ROADWAY	
AREA OUTLINE	
FENCE	
ROADWAY	
TREE	
SCALAR	
SPOT HEIGHT	377.0
POLE	
SHAWL	
CULVERT	
PHOTO CENTER	

SCOTIA PROPERTY
ARNEX RESOURCES LTD.
 CONTOUR INTERVAL 2m
 SCALE 1:2500



COMPILED BY: EAGLE MAPPING LTD.
 PROJECT NO.: 08-003
 URL: www.eaglemapping.com

EagLogo.bmp



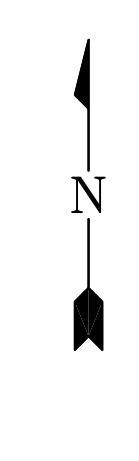
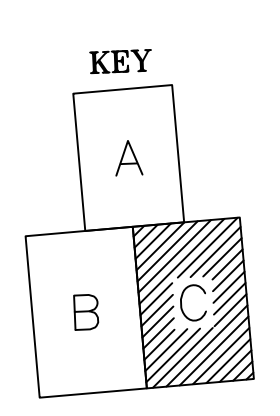
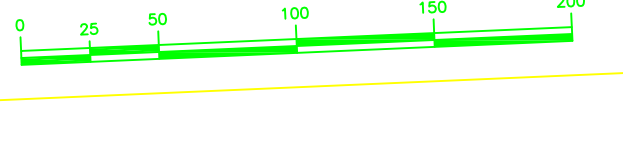
PRODUCED FROM AERIAL PHOTOGRAPHY FLOWN June 08 / 2008
 PHOTO SCALE 1:20,000
 CONTROL POINT FROM SCOTIA
 HORIZONTAL DATUM: UTM NAD 83 ZONE 9
 VERTICAL DATUM: GEOIDETIC
 REVISION: 02
 REV. DATE: Feb. 06 / 2009
 APPROVED: TC

LEGEND

INDEX CONTOUR	240	AREA OUTLINE	
INTERMEDIATE CONTOUR		FENCE	
DEPRESSION CONTOUR		ROADING	
WATER		TREES	
STRAW		SCARP	
HIGHLIGHT STRAW		WIRE FENCE	
INTERMEDIATE STREAM		SPOT HEIGHT	377.0
GRAVEL ROAD		POLE	
ROAD		SHAW	
ROADWAY		CLOUSET	
		PHOTO CENTER	

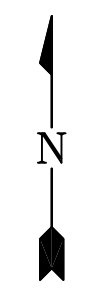
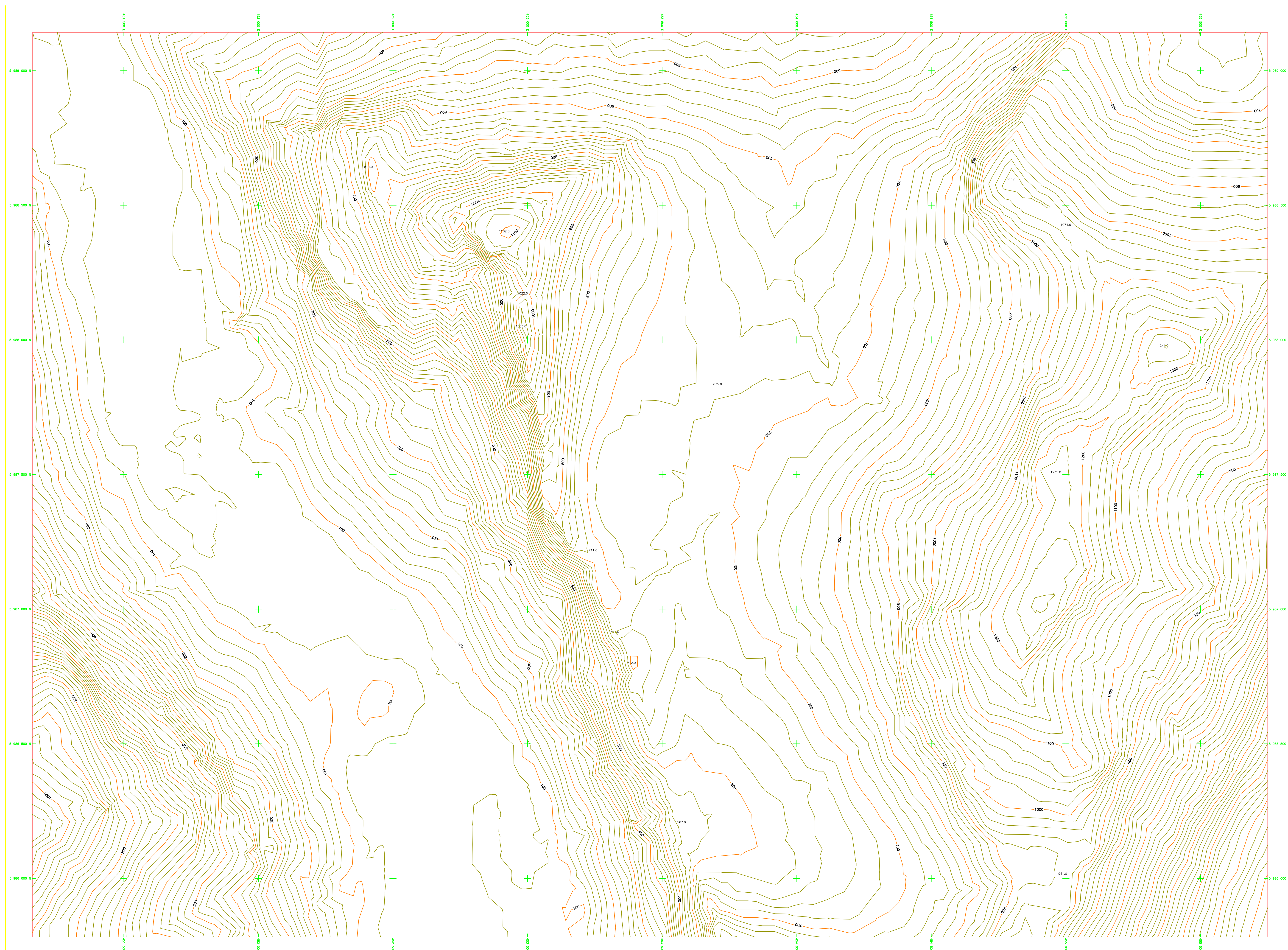
SCOTIA PROPERTY
ARNEX RESOURCES LTD.

CONTOUR INTERVAL 2m
 SCALE 1:2500



COMPILED BY: EAGLE MAPPING LTD.
 PROJECT NO.: 08-063
 URL: www.eaglemapping.com

EagLogo.bmp



KEY

7	8
5	6
3	4
1	2

SCOTIA PROPERTY

ARNEX RESOURCES LTD.

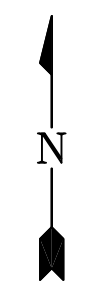
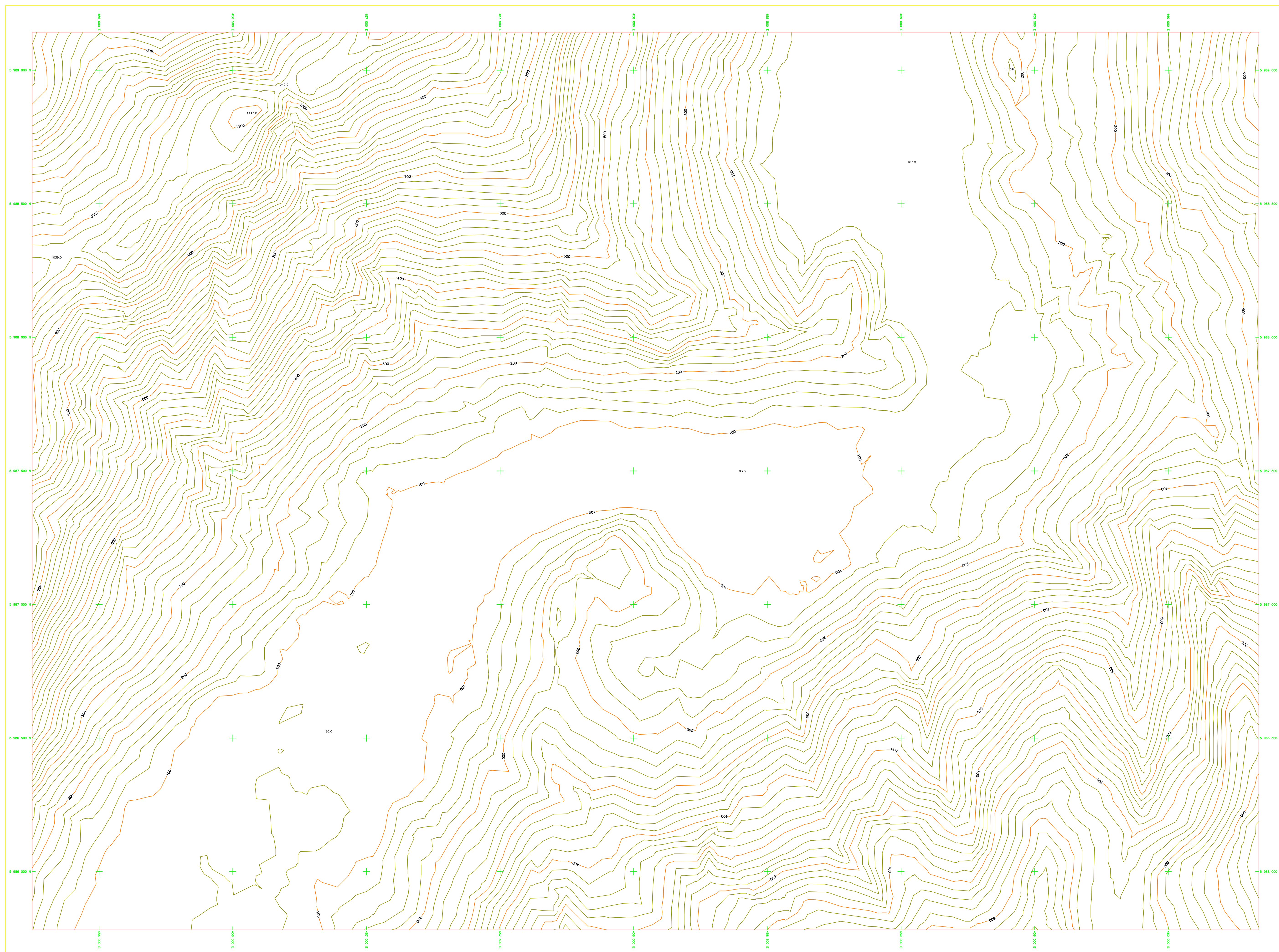
CONTOUR INTERVAL 20m
SCALE 1:5000



PRODUCED FROM AERIAL PHOTOGRAPHY FLOWN: JUNE 08 /2008
 PHOTO SCALE: 1:20,000
 CONTROL BY: TRIM
 HORIZONTAL DATUM: UTM MAD 83 ZONE 9
 VERTICAL DATUM: GEODETIC
 REVISION: 00
 REV. DATE: Feb. 04 /2009
 APPROVED: TC

COMPILED BY: EAGLE MAPPING LTD.
 PROJECT NO.: 08-083
 URL: www.eaglemapping.com





KEY

7	8
5	6
3	4
1	

SCOTIA PROPERTY

ARNEX RESOURCES LTD.

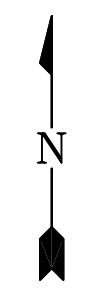
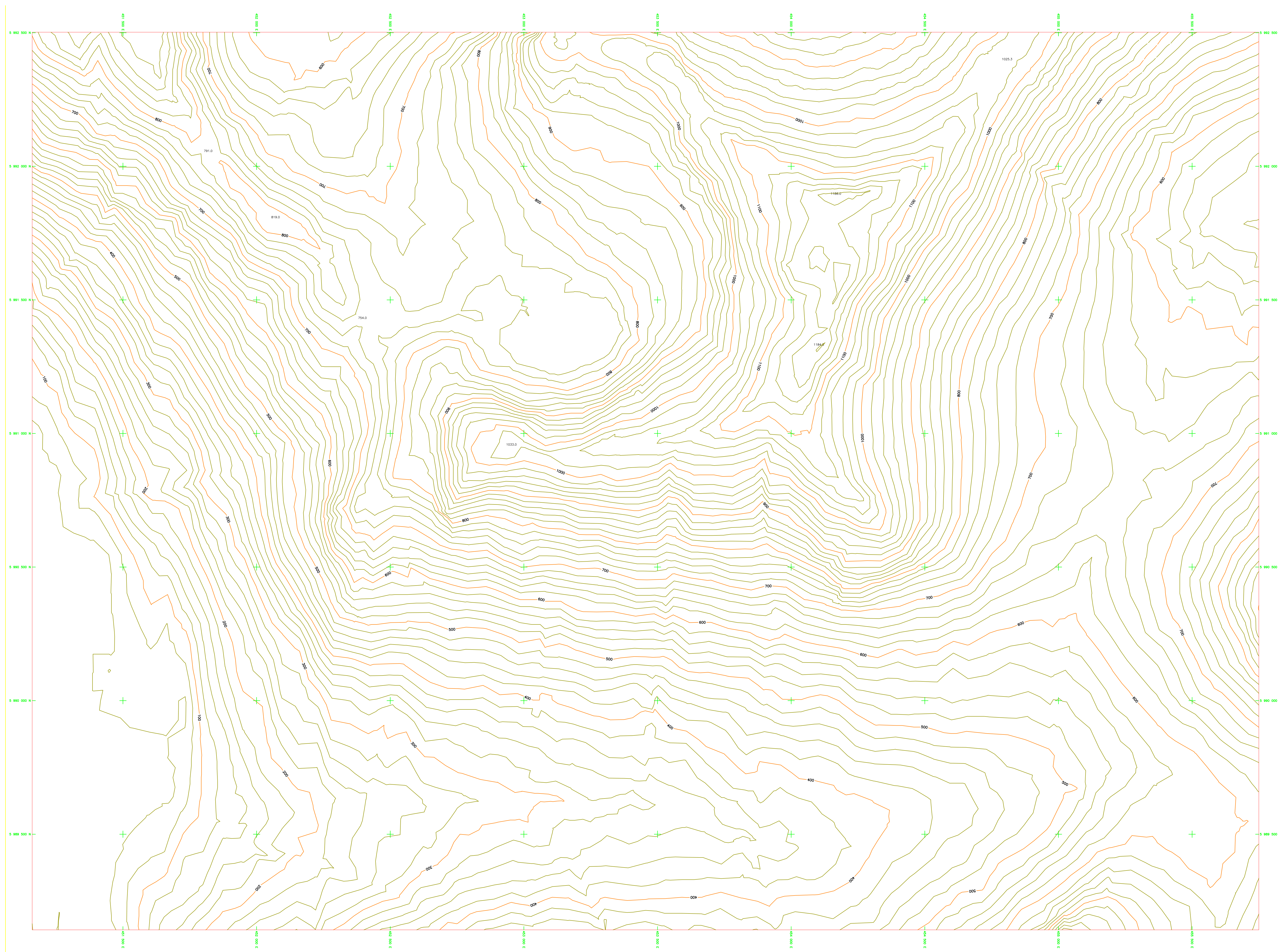
CONTOUR INTERVAL 20m
SCALE 1:5000



PRODUCED FROM AERIAL PHOTOGRAPHY FLOWN: JUNE 08 /2008
 PHOTO SCALE: 1:20,000
 CONTROL BY: TRIM
 HORIZONTAL DATUM: UTM NAD 83 ZONE 9
 VERTICAL DATUM: GEODETIC
 REVISION: 00
 REV. DATE: Feb. 04 /2009
 APPROVED: TC

COMPILED BY: EAGLE MAPPING LTD.
 PROJECT NO.: 08-083
 URL: www.eaglemapping.com





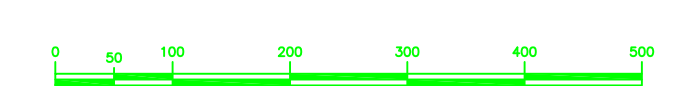
KEY

7	8
5	6
3	4
1	2

SCOTIA PROPERTY

ARNEX RESOURCES LTD.

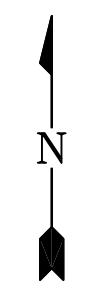
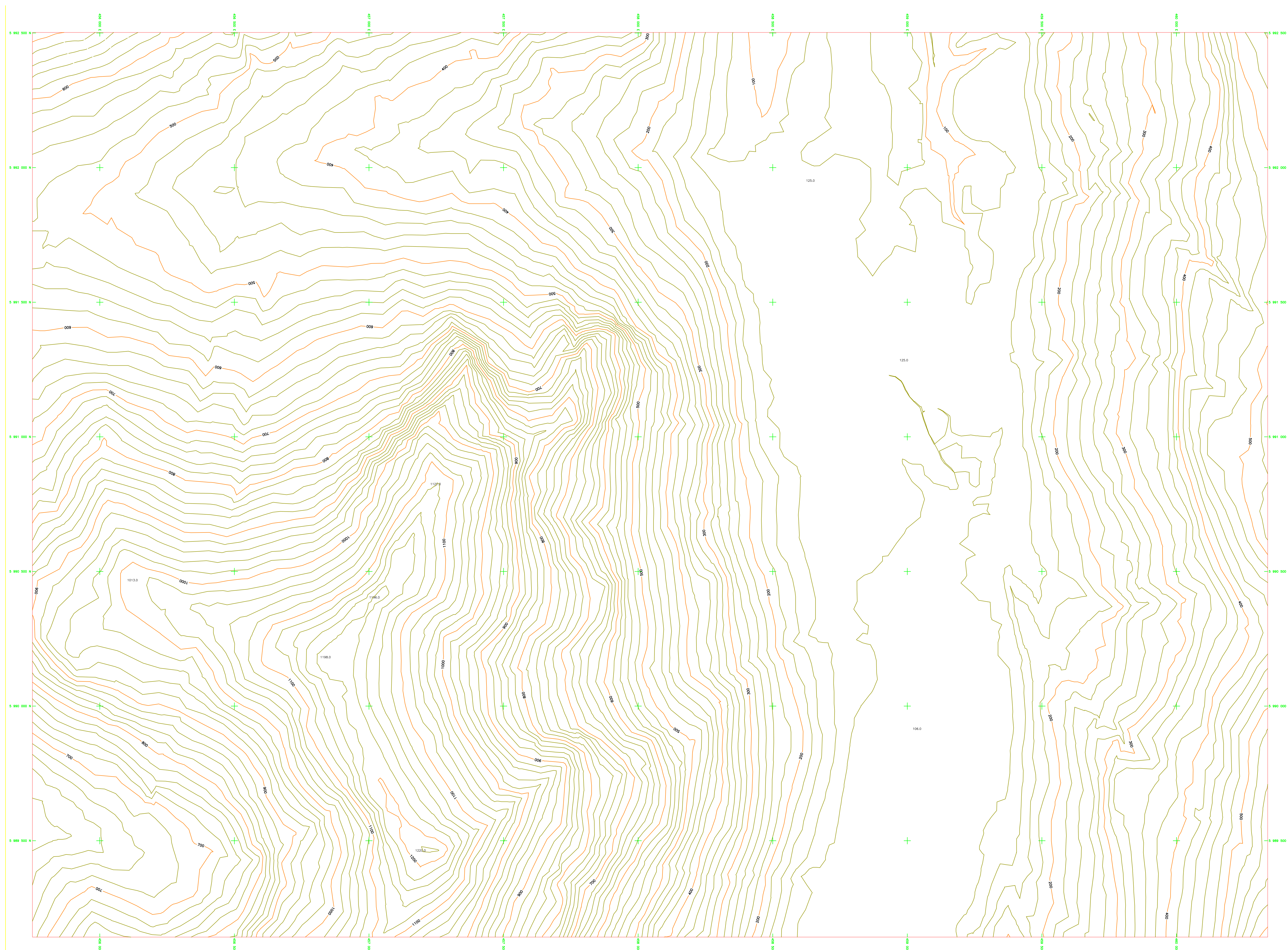
CONTOUR INTERVAL 20 m
SCALE 1:5000



PRODUCED FROM AERIAL PHOTOGRAPHY FLOWN: JUNE 08 /2008
 PHOTO SCALE: 1:20,000
 CONTROL BY: TRIM
 HORIZONTAL DATUM: UTM MAD 83 ZONE 9
 VERTICAL DATUM: GEODETIC
 REVISION: 00
 REV. DATE: Feb. 04 /2009
 APPROVED: TC

COMPILED BY: EAGLE MAPPING LTD.
 PROJECT NO.: 08-063
 URL: www.eaglemapping.com





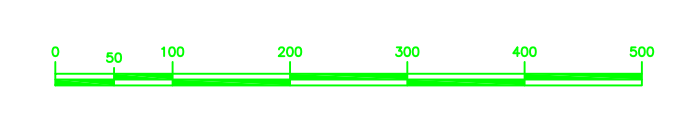
KEY

7	8
5	6
3	4
1	2

SCOTIA PROPERTY

ARNEX RESOURCES LTD.

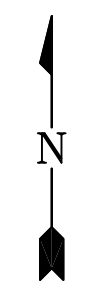
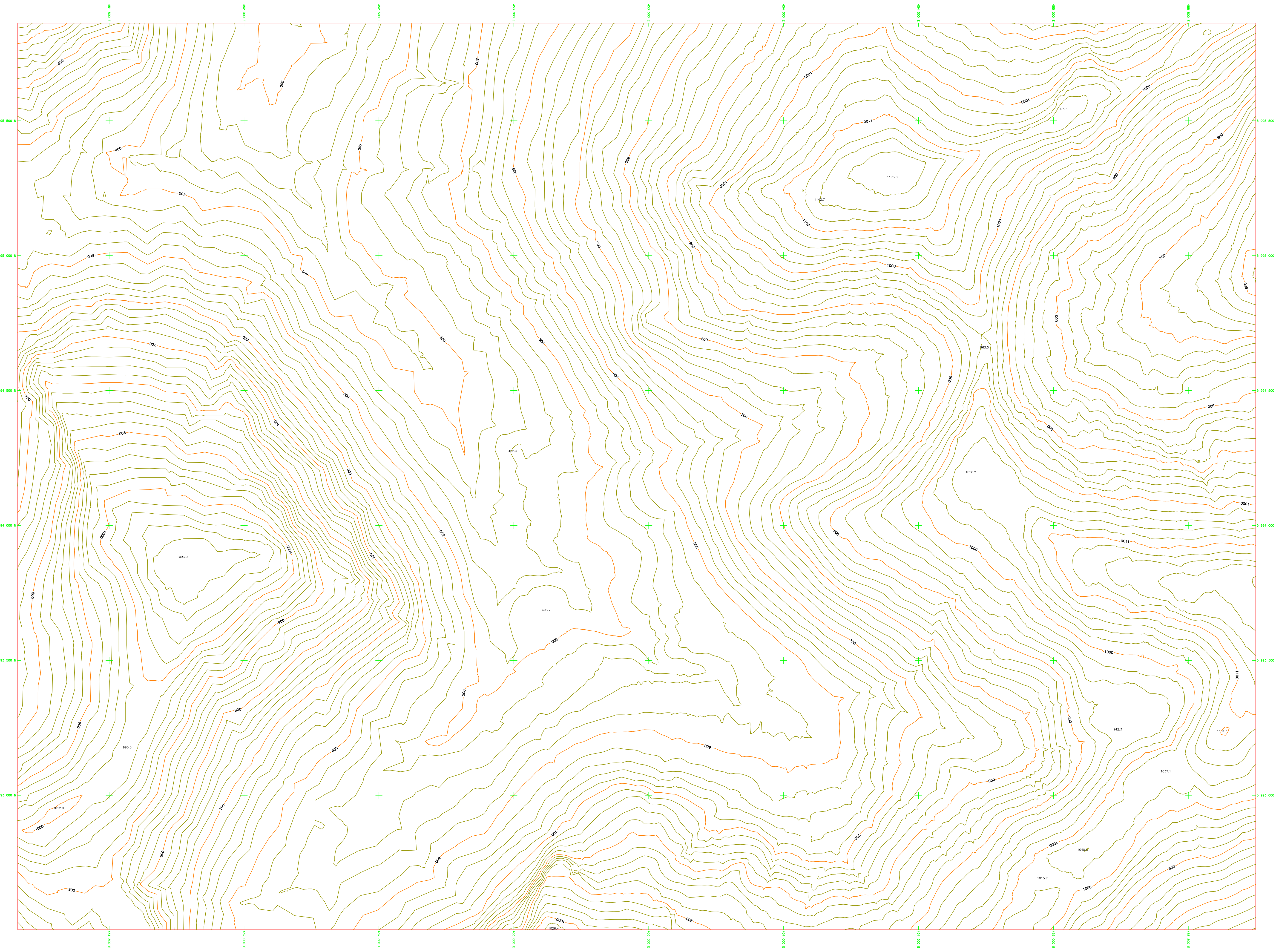
CONTOUR INTERVAL 20m
SCALE 1:5000



PRODUCED FROM AERIAL PHOTOGRAPHY FLOWN: JUNE 08 /2008
 PHOTO SCALE: 1:20,000
 CONTROL BY: TRIM
 HORIZONTAL DATUM: UTM MAD 83 ZONE 9
 VERTICAL DATUM: GEODETIC
 REVISION: 00
 REV. DATE: Feb. 04 /2009
 APPROVED: TC

COMPILED BY: EAGLE MAPPING LTD.
 PROJECT NO.: 08-063
 URL: www.eaglemapping.com





KEY	
7	8
5	6
3	4
1	2

SCOTIA PROPERTY

ARNEX RESOURCES LTD.

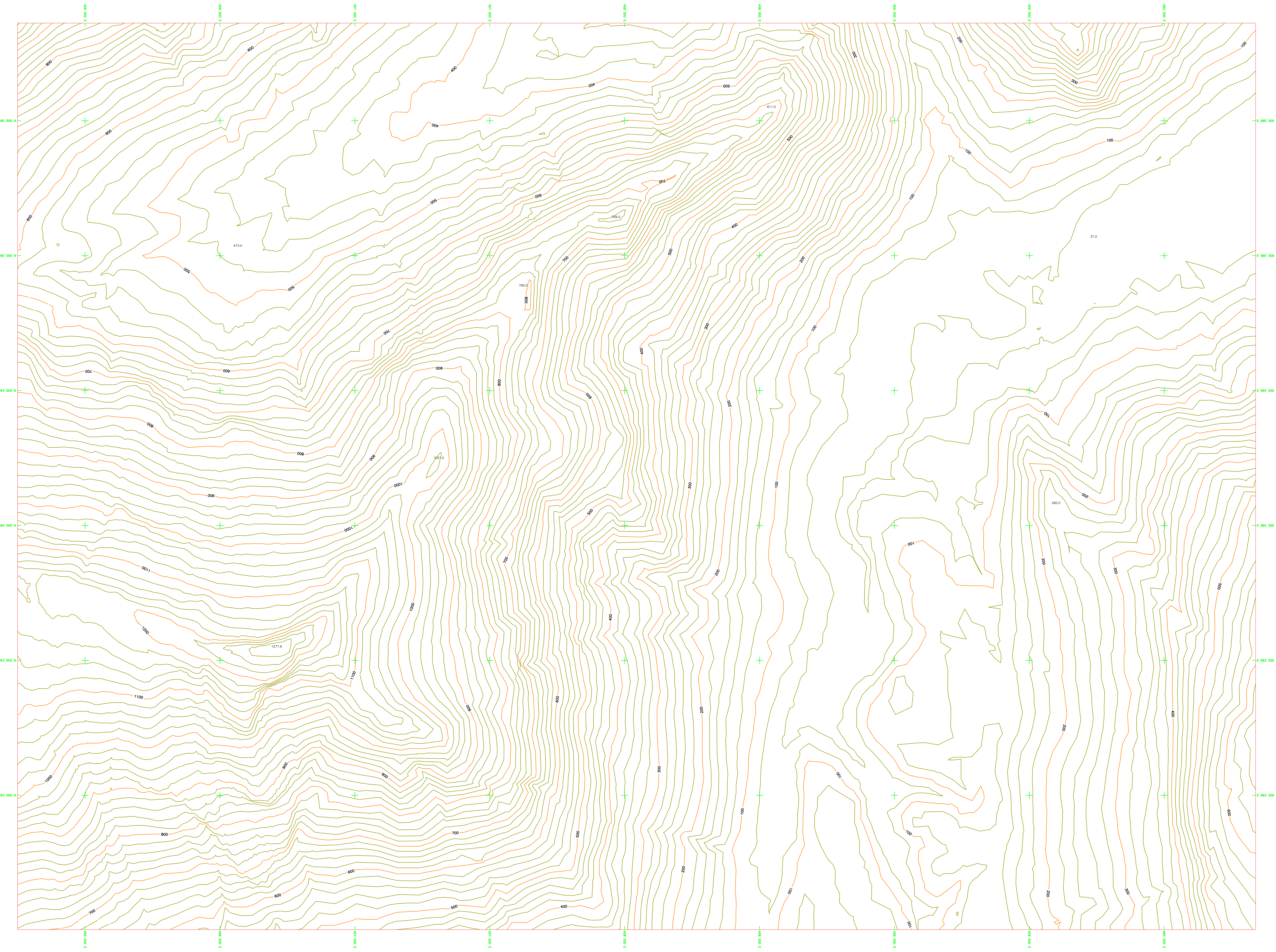
CONTOUR INTERVAL 20m
SCALE 1:5000



PRODUCED FROM AERIAL PHOTOGRAPHY FLOWN: JUNE 08 /2008
 PHOTO SCALE: 1:20,000
 CONTROL BY: TRIM
 HORIZONTAL DATUM: UTM MAD 83 ZONE 9
 VERTICAL DATUM: GEODETIC
 REVISION: 00
 REV. DATE: Feb. 04 /2009
 APPROVED: TC

COMPILED BY: EAGLE MAPPING LTD.
 PROJECT NO.: 08-083
 URL: www.eaglemapping.com





KEY

7	8
5	6
3	4
1	2

SCOTIA PROPERTY

ARNEX RESOURCES LTD.

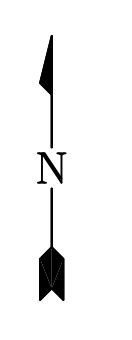
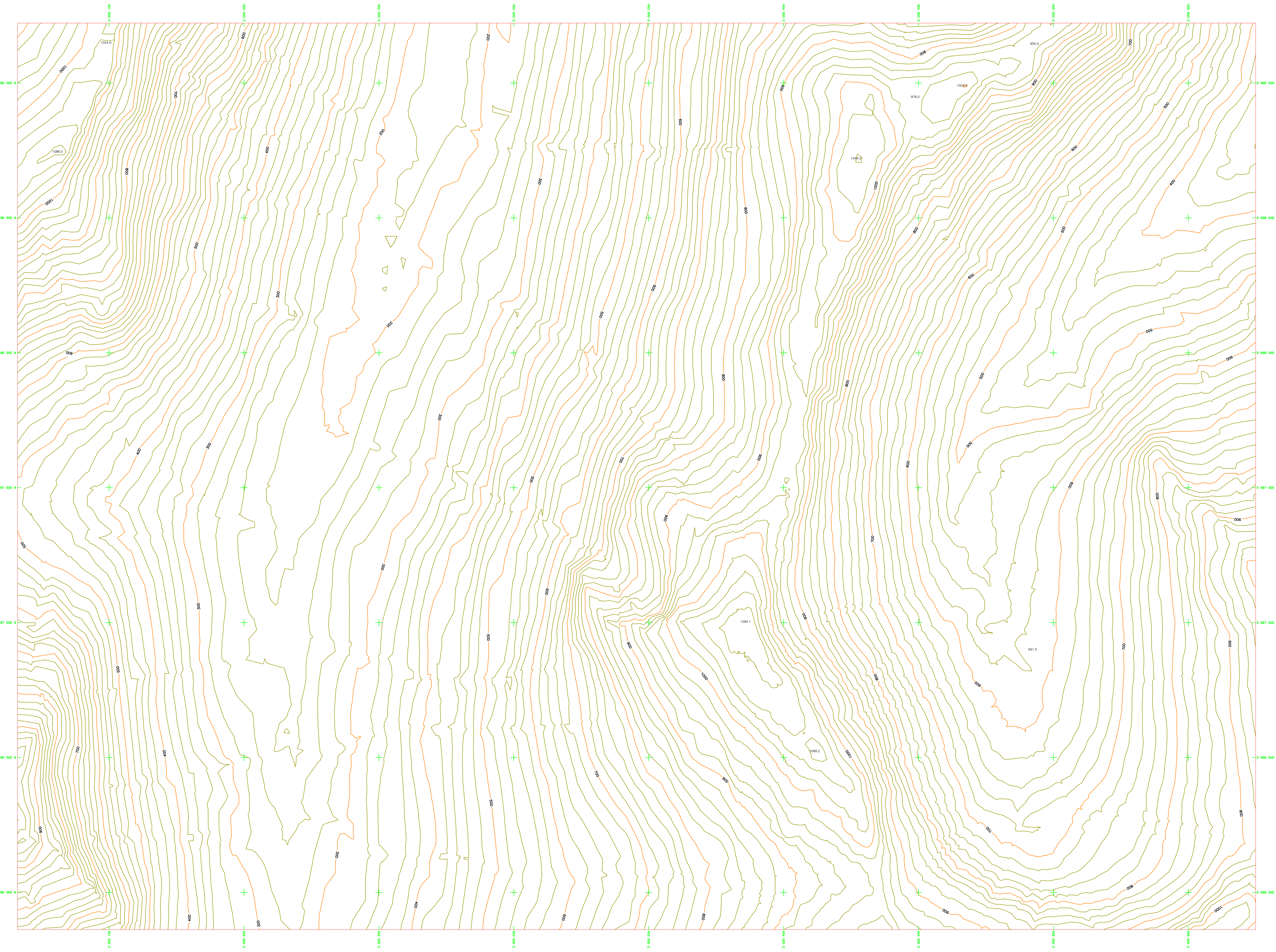
CONTOUR INTERVAL 20m
SCALE 1:5000



PRODUCED FROM AERIAL PHOTOGRAPHY FLOWN: JUNE 08 /2008
 PHOTO SCALE: 1:20,000
 CONTROL BY: TRIM
 HORIZONTAL DATUM: UTM MAD 83 ZONE 9
 VERTICAL DATUM: GEODETIC
 REVISION: 00
 REV. DATE: Feb. 04 /2009
 APPROVED: TC

COMPILED BY: EAGLE MAPPING LTD.
 PROJECT NO.: 08-083
 URL: www.eaglemapping.com





KEY	
7	8
5	6
3	4
1	2

SCOTIA PROPERTY

ARNEX RESOURCES LTD.

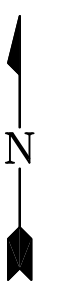
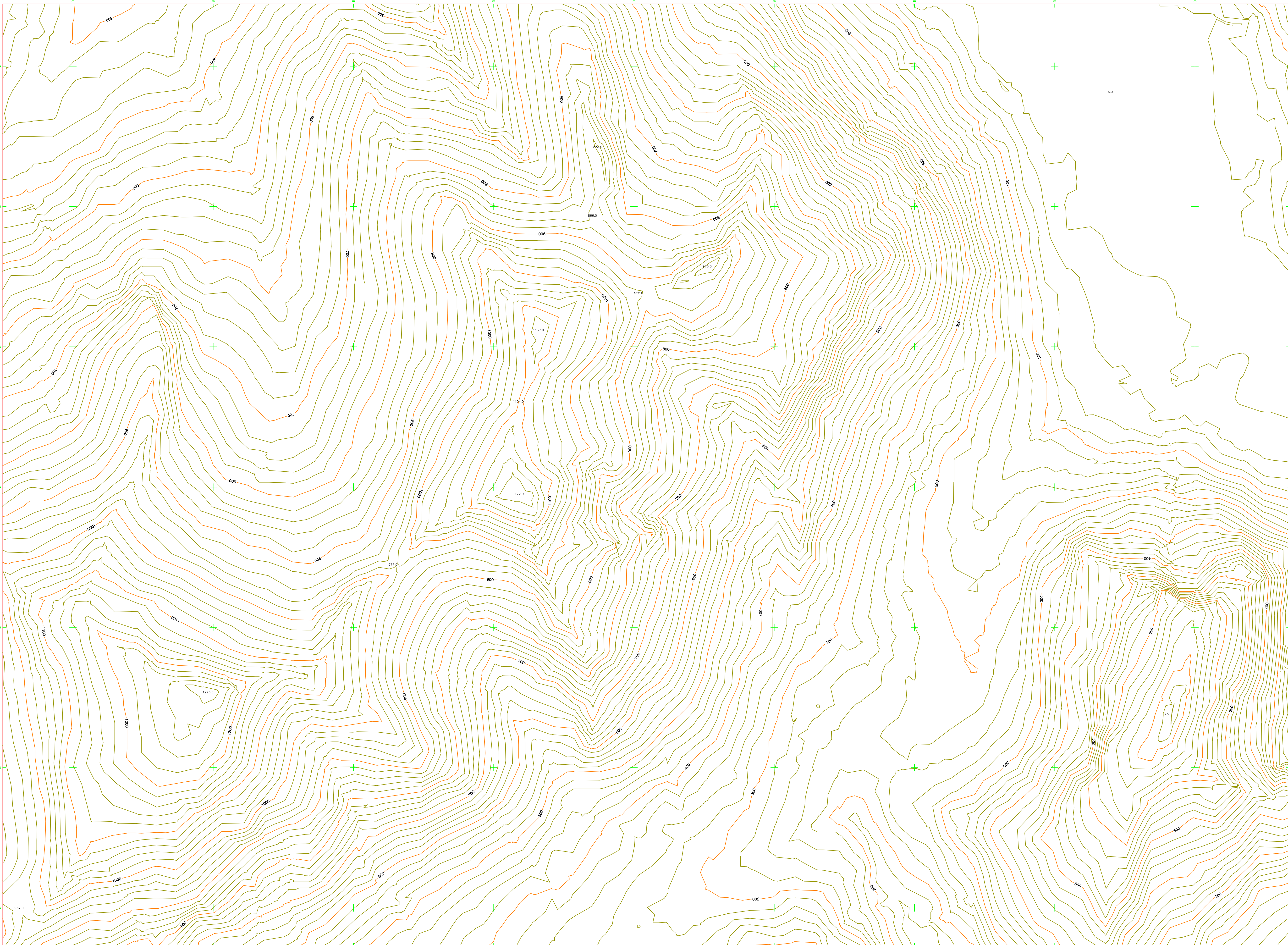
CONTOUR INTERVAL 20m
SCALE 1:5000



PRODUCED FROM AERIAL PHOTOGRAPHY FLOWN: JUNE 08 /2008
PHOTO SCALE: 1:20,000
CONTROL BY: TRIM
HORIZONTAL DATUM: UTM NAD 83 ZONE 9
VERTICAL DATUM: GEODETIC
REVISION: 00
REV. DATE: Feb. 04 /2009
APPROVED: TC

COMPILED BY: EAGLE MAPPING LTD.
PROJECT NO.: 08-083
URL: www.eaglemapping.com





KEY	
7	8
5	6
3	4
1	2

SCOTIA PROPERTY

ARNEX RESOURCES LTD.

CONTOUR INTERVAL 20m
SCALE 1:5000



PRODUCED FROM AERIAL PHOTOGRAPHY FLOWN: JUNE 08 /2008
 PHOTO SCALE: 1:20,000
 CONTROL BY: TRIM
 HORIZONTAL DATUM: UTM NAD 83 ZONE 9
 VERTICAL DATUM: GEODETIC
 REVISION: 00
 REV. DATE: Feb. 04 /2009
 APPROVED: TC

COMPILED BY: EAGLE MAPPING LTD.
 PROJECT NO.: 08-083
 URL: www.eaglemapping.com

