

VICTORY RESOURCES CORPORATION

Diamond Drilling Assessment Report

Toni Property/Wen Claim

BCGS 092H.098

**BC Geological Survey
Assessment Report
30728**

VICTORY RESOURCES CORPORATION

(Owner & Operator)

DIAMOND DRILLING ASSESSMENT REPORT

(Event Number: 4238793)

(Work performed from May 1, 2008 to September 27, 2008)

on the

WEN CLAIM GROUP

(Centre of work: 5535115N, 683145E)

(NAD 83)

of the

TONI PROPERTY

Nicola Mining Division

NTS 092H.098

Laurence Sookochoff, PEng

Author & Consultant

TABLE OF CONTENTS

	page
Summary -----	3.
Introduction -----	4.
Property Description and Location -----	4.
Accessibility, Climate, Local Resources, Infrastructure and Physiography -----	5.
History -----	5.
Geology: Regional -----	6.
Geology: WEN Claim -----	6.
Mineralization -----	7.
2008 Diamond Drill Program -----	8.
Interpretation -----	9.
Selected References -----	10.
Statement of Costs -----	11.
Certificate -----	12.

ILLUSTRATIONS

	Following page
Figure 1. Location Map -----	4.
Figure 2. Claim Location Map -----	4.
Figure 3. Claim Map -----	5.
Figure 4. Drill Hole Plan Map -----	7.
Figure 5. Drill Hole W-08-02 Section -----	8.
Figure 6. Drill Hole W 08-03 Section -----	8.
Figure 7. Drill Hole W 08-04 Section -----	8.
Figure 8. Drill Hole W 08-05 Section -----	8.

APPENDICES

Appendix I -----	Assay Certificate
Appendix II -----	Diamond Drill Logs

VICTORY RESOURCES CORPORATION

Diamond Drilling Assessment Report

Toni Property/Wen Claim

BCGS 092H.098

SUMMARY

The HN-WEN mineral prospect, designated as MINFILE 092HNE058 and within the confines of the WEN claim, was explored in the early 1990's when three short adits were driven on exposures containing chalcopyrite-bearing quartz veins. The HN-WEN prospect area was subsequently explored by many companies with one of the more recent, by George Resources Company Ltd. in a completion of 16-hole, 1,636.8 metre diamond drill program within the area of the HN-WEN prospect. Verley (2002) reports that from seven diamond-drill holes completed to test the Main Vein (near the lowermost adit) of the HN-WEN prospect, significant mineralization was only intersected in two holes. Drill-hole W96-1 averaged 16.578 gm/t Au, 18.185 gm/t Ag, and 0.75% Cu over 6.55 metres of a core interval. Assays of core from drill-hole W96-16 returned 3.95 gm/t Au, 9.856 gm/t Ag, and 1.12% Cu over 2.36 metres.

The results from the remainder of the 16 diamond drill holes (nine drill holes), which were drilled on the Stockwork Zone and the Upper Zone indicated widespread and locally high-grade copper mineralization (3.6% Cu over 1.68 metres in W96-3) of the Stockwork Zone, or erratically distributed mineralization throughout the area of the Upper Zone.

The results from 2006 MMI soil survey, which covered the Main Vein, the Upper Zone, and the northern portion of the Stockwork Zone, were interpreted to indicate that the Main vein, as reported, does dip steeply westerly with its indicated surface outcrop location expressed as one of the highest gold anomalies of the survey. The high-grade Main vein gold intersection was indicated as a lower-order gold anomaly. Based on the interpreted results of the Main Vein, other locations of potentially mineralized veins are indicated within the MMI soil survey area.

In the 2008 diamond drill program VRW 08-1 was projected to intersect the gold bearing zone intersected in WR 96-1 (3.81 metres of 28.43 g/t Au and 0.98% Cu) within three metres. The drill core and the assay results did not reveal any indication of the WR 96-1 mineralized, however, the geological indications in the core, with the stockwork of quartz/carbonate veins, the alteration, and the anomalous mercury (Hg) values may indicate a proximal quartz vein hosting gold values.

The four diamond drill holes, VRW 08-2 to VRW 08-5, that were completed after VRW 08-1, and which is the basis of this report, provided significant results. A mineralized quartz vein, designated as the Adit Vein, which is obscurely exposed at the portal the Lower Adit, was intersected in all four drill holes. The Adit vein is indicated to strike east-west, dip steeply to the south, and up to three metres in true width. Assays from the mineralized sections of the vein, from which recovery was poor due to a high degree of pyrite, returned up to 8.6 g/t Au over one metre.

The Adit vein does not relate to the 1996 Main Vein which is indicated 40 metres west of the Lower Adit and striking north-south. The Main Vein, based on the significant intersection within W98-1, may actually strike east-west paralleling the Adit Vein 35 metres to the south. This would account for the absence of any near comparable quartz vein in drill holes W96-16 and VRT 08-2; both of which were projected to test the mineralization and the extensions of the Main Vein within ten metres of the W96-1 intersection.

VICTORY RESOURCES CORPORATION

Diamond Drilling Assessment Report

Toni Property/Wen Claim

BCGS 092H.098

INTRODUCTION

From May 1, 2008 to September 27, 2008 a diamond drill program consisting of four NQ diamond drill holes for a total of 183.43 metres was completed on the WEN claim. The purpose of the drill holes was to test the Adit1 area for a potentially mineralized quartz vein.

This report describes the nature of, and the results of the work program, and was prepared as a final requirement for the assessment work applied to the claims as Event No. 4238793.

Information for this report was obtained from sources as cited under Selected References and from the supervision by the author of the drill program as reported on herein.

PROPERTY DESCRIPTION AND LOCATION

The Toni property is comprised of 88 contiguous mineral claims covering an area of 34,351 hectares. The eight contiguous claims of the Toni property (WEN Claim Group), to which the assessment work is applied, cover an area of 1509.931 hectares, are indicated on the accompanying Figure 2, and are listed as follows.

<u>Tenure Number</u>	<u>Type</u>	<u>Claim Name</u>	<u>Good Until*</u>	<u>Area (ha)</u>
520757	Mineral	WEN	20091108	499.041
520759	Mineral	LUCKY GOLD	20101108	83.146
520823	Mineral	HARRY NESBITT	20091108	291.053
527126	Mineral	CECIL 19	20070206	447.428
567541	Mineral	AU-WEN A	20091005	20.787
567542	Mineral	AU-WEN B	20091005	20.786
567543	Mineral	AU-WEN C	20091005	62.378
582313	Mineral	NEW WEN 2	20100422	166.312

Total Area: 1590.931 ha

*Upon the approval of the assessment work filing, Event Number 4238793, which this report forms a part thereof.

The WEN claim is located within NTS 092H.098 in the Nicola Mining Division, 223 kilometres at 070 degrees from Vancouver, 30 km at 128.7 degrees from Merritt and seven kilometres at 080 degrees Aspen Grove. The centre of work area is at UTM 5535115N, 683145E (NAD 83).

VICTORY RESOURCES CORPORATION



Figure 1.
LOCATION
MAP

VICTORY RESOURCES CORPORATION

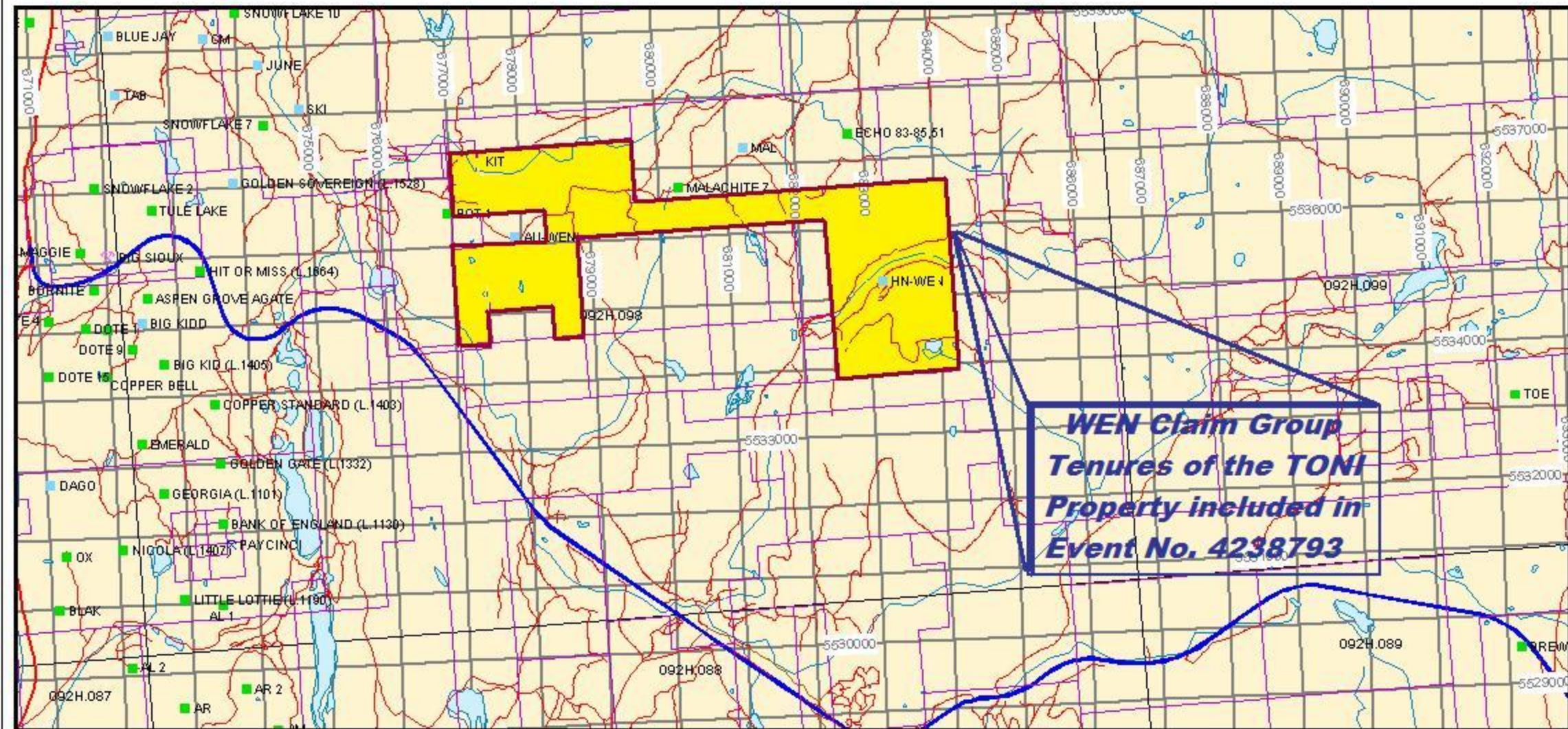


Figure 2 CLAIM LOCATION MAP showing UTM, Access Roads, MINFILE

ACCESSIBILITY, CLIMATE, LOCAL RESOURCES, INFRASTRUCTURE AND PHYSIOGRAPHY

Access is southward from Merritt via the Coquihalla connector Highway for 42 kilometres to the Loon Lake road; thence westward and northward to the "8" kilometre signpost; thence 100 metres northward from this point where the western fork of the road is taken for less than one kilometre to a dirt road leading eastward to an outhouse approximately 30 metres distant. The outhouse is at the location of former drill-sites and core storage. This road also provides access to all the 1996, 2002, and the 2008 drill-sites, and the original HN-WEN prospect (MINFILE No 092HNE058).

The region is situated within the dry belt of British Columbia with rainfall between 25 and 30 cm per year. Temperatures during the summer months could reach a high of 35° and average 25°C with the winter temperatures reaching a low of -10° and averaging 8°. On the WEN claim snow cover on the ground could be from December to April and would not hamper a year-round exploration program.

Sufficient water for all phases of the exploration program could be available from the many lakes and creeks, which are located within the confines of the property. Water may be scarce during the summer months and any water required for exploratory purposes, would be transported. Merritt, or Kamloops, historic mining centres could be a source of experienced and reliable exploration and mining personnel and a supply for most mining related equipment.

Kamloops is serviced daily by commercial airline and is a hub for road and rail transportation. Vancouver, a port city on the southwest corner of, and the largest city in the Province of British Columbia is four hours distant by road and less than one hour by air from Kamloops.

HISTORY

The HN-WEN prospect, designated as MINFILE 092HNE058 and within the confines of the Victory Resources owned WEN claim, was explored in the early 1990's when three short adits were driven on exposures containing chalcopyrite-bearing quartz veins. The WEN prospect was subsequently explored by Consolidated Skeena Mines in the 1960's when an airborne magnetic survey and geochemical soil survey was conducted in the area. In 1971 W. Petrie of Merritt acquired the Hill claims which included the WEN showing and in 1972 optioned the claims to Nitracell Canada.

Nitracell conducted a program of line-cutting, soil sampling, geological mapping, induced polarization and magnetometer surveys, in addition to a five-hole 884.6 metre diamond drill program. In 1996, George Resources Company Ltd. initiated a 16-hole, 1,636.8 metre diamond drill program within the area of the WEN showing. In 2002 Lateegra Resources Corp. completed two diamond drill holes in the HN-WEN area. The highest assay was 0.10% Cu and <0.10 gm/t Au over a 2.74 metre core interval.

VICTORY RESOURCES CORPORATION

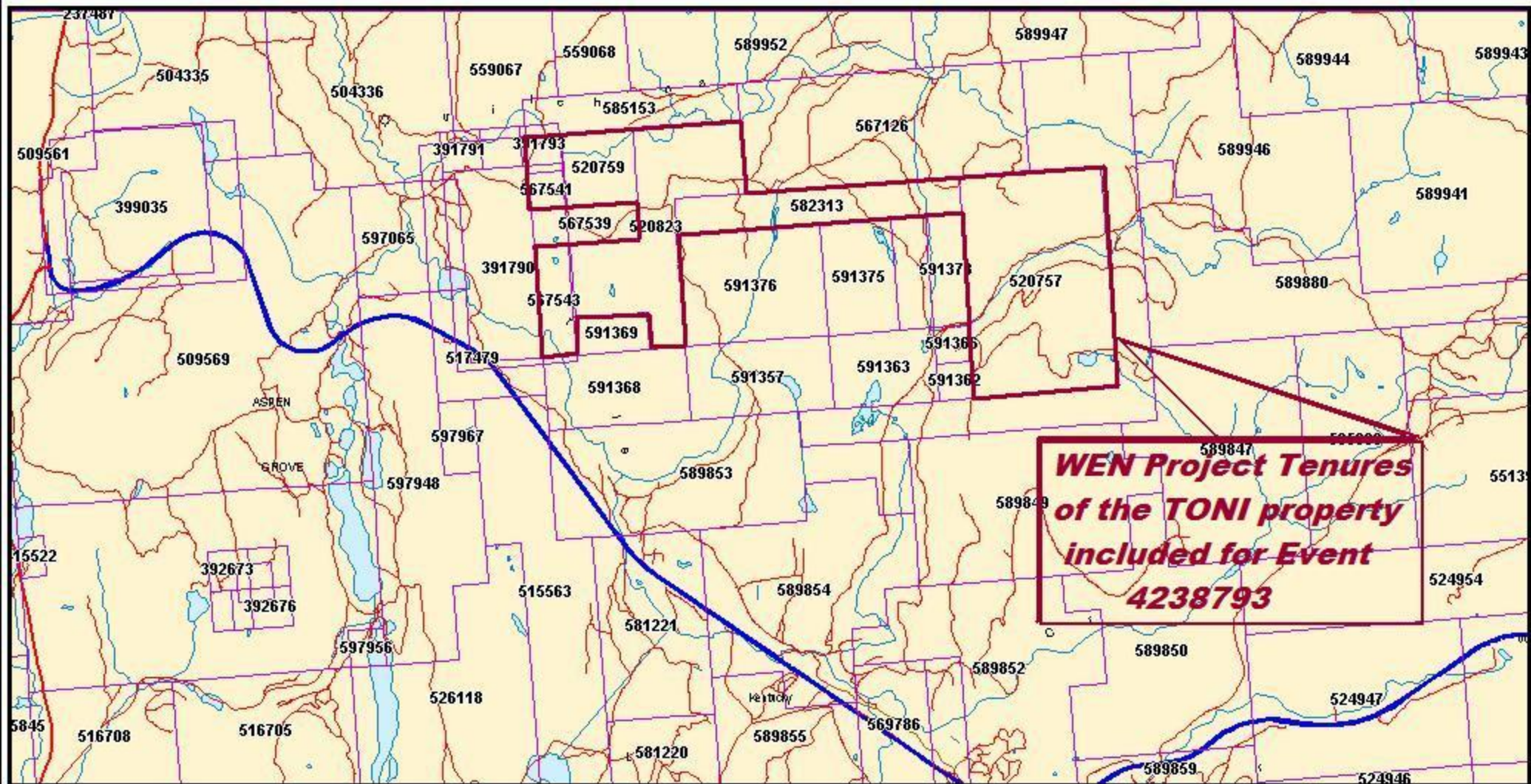


Figure 3. CLAIM MAP: EVENT 4238793

VICTORY RESOURCES CORPORATION

Diamond Drilling Assessment Report

Toni Property/Wen Claim

BCGS 092H.098

GEOLOGY: REGIONAL

The Aspen Grove geological district is located within the regional Quesnel Trough, a 30 to 60, km wide belt of Lower Mesozoic volcanic and related strata enclosed between older rocks and much invaded by batholiths and lesser intrusions (Campbell and Tipper, 1970). The southern part is the well-known Nicola belt, continuing nearly 200 km to its termination at the U.S. border and containing the important copper deposits of Highland Valley, Craigmont, Copper Mountain, Afton, Brenda, in addition to the historic Hedley gold camp.

The Nicola Group has been divided into western, central, and eastern belts on the basis of lithology and litho-geochemistry and by major fault systems. Variation from calc-alkaline to shoshonitic compositions from west to east has been interpreted to reflect eastward dipping subduction in the Nicola arc. The WEN claim is situated within the eastern belt of the Nicola Group which is bounded on the west by the northerly striking Kentucky-Alleyne fault zone.

GEOLOGY: WEN CLAIM

The WEN claim is located along a contact between amphibolite/kyanite grade metamorphic rocks and a succession of upper Triassic mudstone, siltstone, shale, and fine clastic sedimentary rocks, both of the Eastern Volcanic Upper Triassic Belt of Nicola Group Volcanics. The contact between the volcanic rocks and the argillites is parallel to the bedding.

The sedimentary-pyroclastic component is at least 50 metres thick and strikes north-northwesterly, dipping approximately 70 degrees west. Presumably subvolcanic, dioritic hornblende porphyry sills intrude the volcanics and sediments. The volcanics have been intruded by three steeply dipping, northwesterly striking quartz-feldspar porphyry dykes in the vicinity of the Main vein and associated stockwork zones at the HN-WEN prospect. Steeply dipping, easterly striking shears are inferred to crosscut the mineralized area.

The area of the HN-WEN prospect is reportedly (MINFILE) underlain by augite porphyritic volcanic flows of andesitic to basaltic composition, fragmental rocks including tuff and breccia, and argillites. The argillites are dark grey to black, well bedded, locally limy, and are somewhat carbonaceous and pyritic. Minor rock types present include feldspar porphyry and locally lenses of diorite. At, and to the north and east of the northeastern corner of the WEN claim is the contact with the Early Jurassic Pennask batholith, a large intrusion of medium-grained granodiorite to quartz diorite.

VICTORY RESOURCES CORPORATION

Diamond Drilling Assessment Report

Toni Property/Wen Claim

BCGS 092H.098

MINERALIZATION

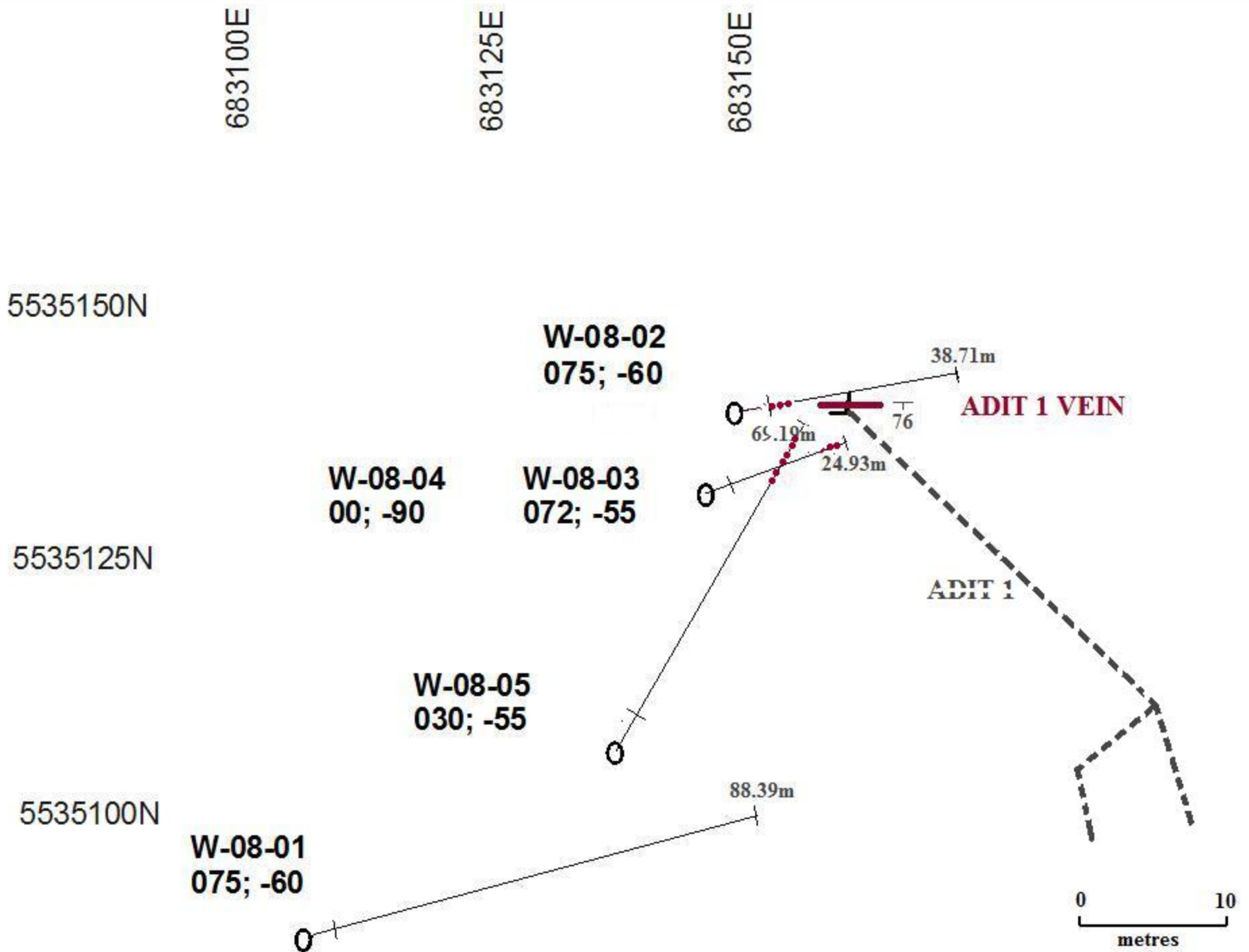
The mineralization (MINFILE) at the HN-WEN prospect is restricted to the volcanics and is exposed in three adits, in at least eight trenches, and is marked by alteration of mainly epidotization, silicification, carbonatization, moderate chloritization, and local pyritization. Chalcopyrite is the only copper mineral: it is disseminated, or concentrated in quartz and calcite veins and veinlets between 0.3 and 30 centimetres thick, usually about eight centimetres thick. Pyrite, pyrrhotite, and rare specular hematite are also present in the veins. Locally, oxidation has produced abundant malachite, azurite, and limonite. The mineralized zone measures 760 by 90 metres and has a depth of about 75 metres.

Diamond drilling indicates that the mineralized zone strikes 160 degrees and dips vertically or steeply east; so it is not parallel to the volcanic-sedimentary contact, indicating that the contact is not a controlling factor. Rather, the veins hosting the mineralization are structurally controlled by numerous faults and fractures which consistently strike 160 degrees and dip 85 degrees east (AR 4230).

Some significant copper and silver values have been obtained from the workings and diamond drill core. A 1.5 metre chip sample from Adit Number 1 reportedly assayed 4.39 % copper, 92.6 grams per tonne silver, and 0.7 grams per tonne gold. A grab sample from the same adit reportedly assayed 4.84% copper, 46.6 grams per tonne silver, and 0.7 grams per tonne gold. Both samples were reportedly from oxidized material and may not be representative of grade throughout the deposit. A drill core sample (Hole HNS 72-1) assayed 1.12 % copper and 3.4 grams per tonne silver (AR 4230).

Verley (2002) reports that from the seven diamond-drill holes of a 16 diamond drill hole program completed in 1996, to test the Main Vein of the HN-WEN prospect, significant mineralization was only intersected in two holes. Drill-hole W96-1 averaged 16.578 gm/t Au, 18.185 gm/t Ag, and 0.75% Cu over 6.55 metres of core. Assays of core from drill-hole W96- 16 returned 3.95 gm/t Au, 9.856 gm/t Ag, and 1.12% Cu over 2.36 metres.

Verley (2002) concludes that it is probable that the high-grade mineralization intersected in diamond-drill hole W96-1, forms a shoot with an as yet an unknown rake within the vein. The results from the remainder of the 16 diamond drill holes, which were drilled on the Stockwork Zone and the Upper Zone indicated widespread and locally high-grade copper mineralization (3.6% over 1.68 metres in W96-3) of the Stockwork Zone, or erratically distributed mineralization throughout the area of the Upper Zone.



VICTORY RESOURCES CORPORATION
WEN Claim Group; 092H.098
2008 Diamond Drill Program
Event No. 4238973

DRILL HOLE PLAN MAP

Figure 4.

VICTORY RESOURCES CORPORATION

Diamond Drilling Assessment Report

Toni Property/Wen Claim

BCGS 092H.098

2008 DIAMOND DRILL PROGRAM

The particulars of the diamond drill holes completed on the Wen claim are as follows.

Diamond Drill Hole: VRW 08-2

Location: 683,1150E; 5,535,140N

Purpose: To test an indicated quartz vein at the Adit 1 portal.

Azimuth: 079°

Dip: 55°

Length: 38.71 metres

Results: After 7.62 metres of overburden, a 3.63 metre quartz vein with local mineralization was intersected which is hosted by propylitically altered Nicola volcanics. A one metre section from the hanging wall quartz vein returned an assay of 8.6 g/t Au, 0.24% Cu, and 0.24 g/t Hg. A one metre section from the foot wall quartz vein returned an assay of 1.1 g/t Au, 0.09% Cu, and 0.18 g/t Hg

Diamond Drill Hole: VRW 08-3

Location: 683,148E; 5,535,133N

Purpose: To test the Adit 1 quartz vein intersected by drill hole VRW-082 to depth.

Azimuth: 072°

Dip: 55°

Length: 24.93 metres

Results: A 1.26 metre mineralized quartz vein was intersected hosted by propylitically altered Nicola volcanics. The 1.26 metre quartz vein returned an assay of 0.14 g/t Au, greater than 1.00 % Cu, and 0.34 g/t Hg.

Diamond Drill Hole: VRW 08-4

Location: 683,148E; 5,535,133N

Purpose: To test the Adit 1 quartz vein to depth.

Azimuth: 00°

Dip: 90°

Length: 50.29 metres

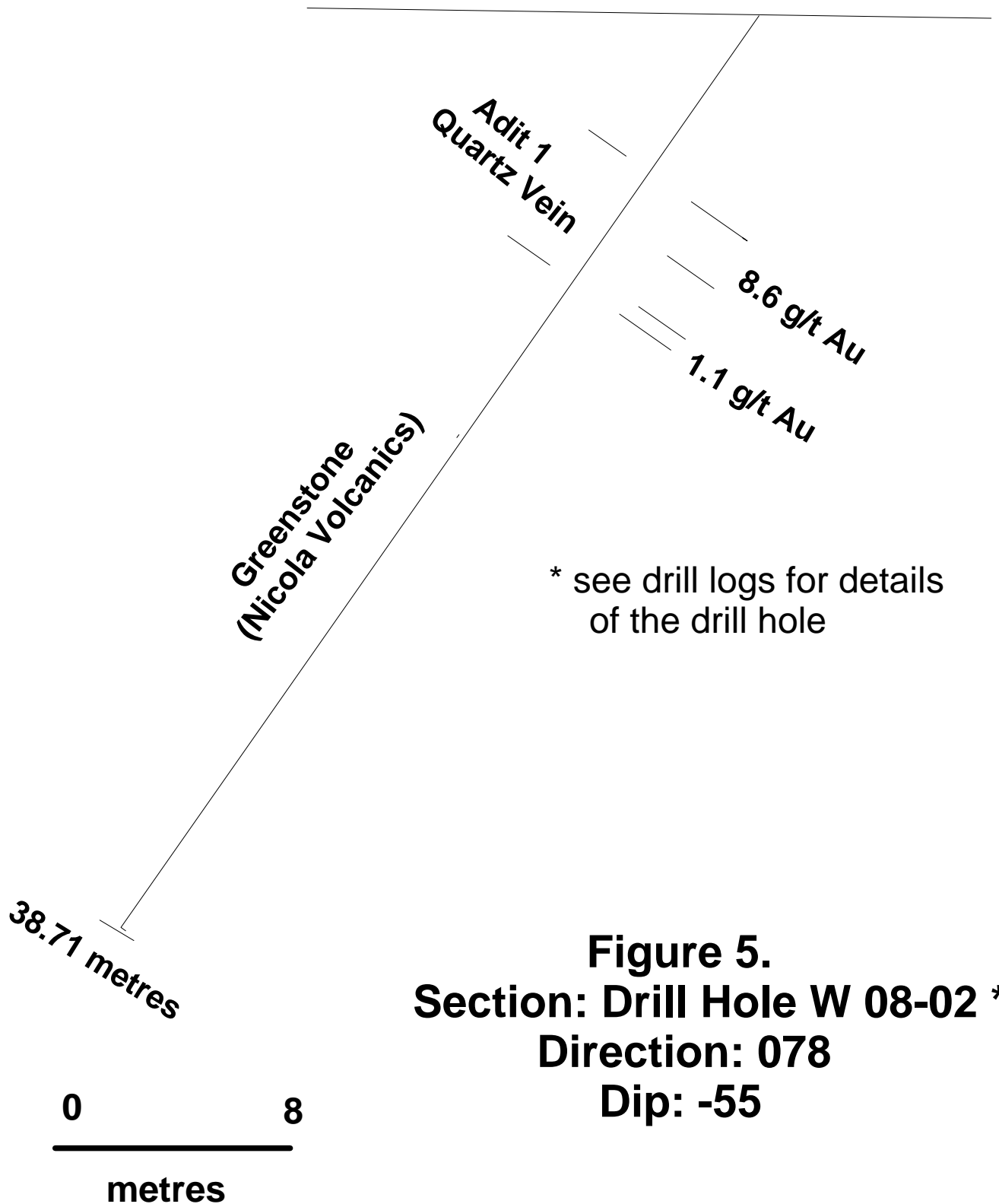
Results: A 13.09 metre sporadically mineralized quartz vein was intersected. A 2.77 section of the quartz vein returned an assay of 1.32 g/t Au, 0.01 % Cu, and 0.53 g/t Hg.

VICTORY RESOURCES CORPORATION

TONI Property/WEN Project

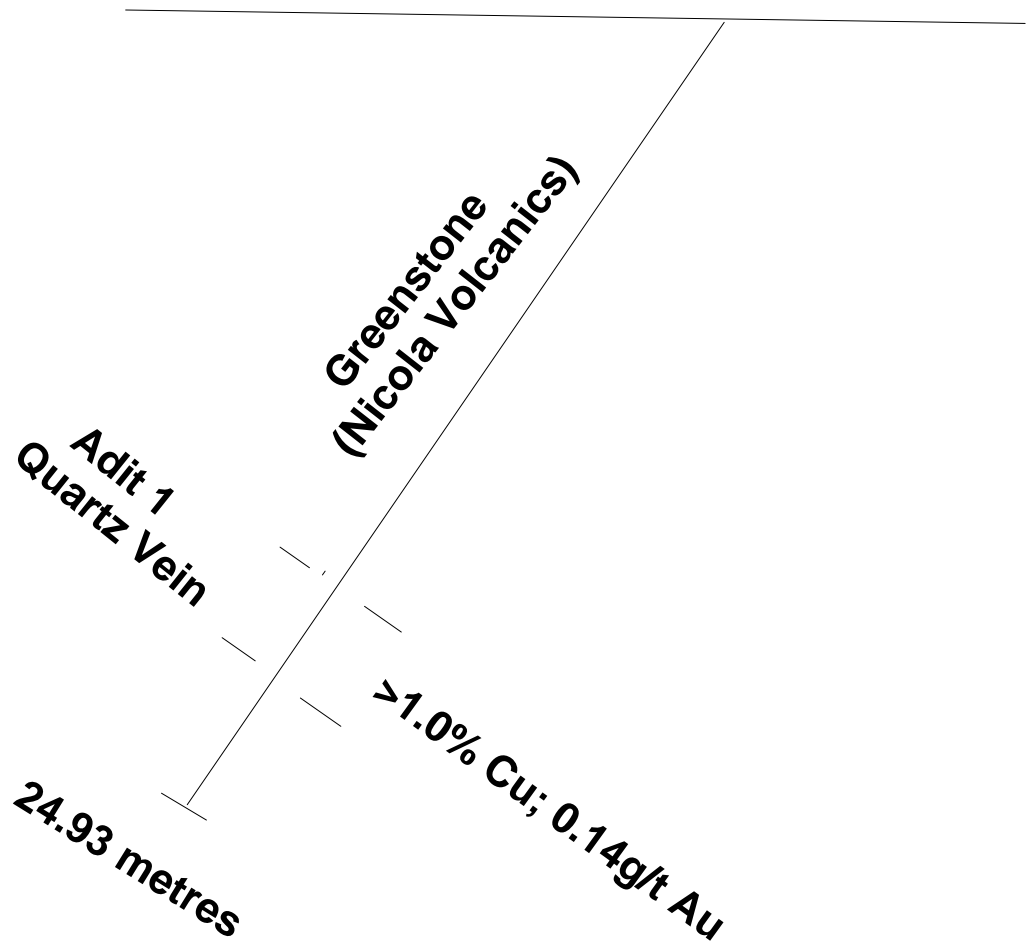
NTS 092H.098

W 08-02 Collar @
683,150 E
5,535.132 N



VICTORY RESOURCES CORPORATION
TONI Property/WEN Project
NTS 092H.098

**W 08-03 Collar @
683,148 E
5,535.133 N**



* see drill logs for details
of the drill hole

0 8
—————
metres

Figure 6.
Section: Drill Hole W 08-03 *
Direction: 072
Dip: -55

**Greenstone
(Nicola Volcanics)**

**W 08-04 Collar @
683,150 E
5,535.132 N**

**VICTORY RESOURCES CORPORATION
TONI Property/WEN Project
NTS 092H.098**

*** see drill logs for details
of the drill hole**

1.32g/t Au; 0.53g/t Hg

**Adit 1
Quartz Vein**

0 8
—————
metres

50.29 metres

**Figure 7.
Section: Drill Hole W 08-04*
Dip: -90**

VICTORY RESOURCES CORPORATION

TONI Property/WEN Project

NTS 092H.098

**W 08-05 Collar @
683,139 E
5,535.107 N**

**Greenstone
(Nicola Volcanics)**

* see drill logs for details
of the drill hole

0 12
metres

Adit 1
Quartz Vein
69.19 metres

4.60 g/t Au; 2.95 g/t Hg

**Figure 8.
Section: Drill Hole W 08-05 *
Direction: 030
Dip: -55**

VICTORY RESOURCES CORPORATION

Diamond Drilling Assessment Report

Toni Property/Wen Claim

BCGS 092H.098

Diamond Drill Hole: VRW 08-5

Location: 683,139E; 5,535,107N

Purpose: To test the Adit 1 quartz vein to depth and along strike.

Azimuth: 030°

Dip: 55°

Length: 69.19 metres

Results: An 8.84 metre sporadically mineralized quartz vein was intersected. A 0.75 section of the quartz vein returned an assay of 4.6 g/t Au, 0.02 % Cu, and 2.95 g/t Hg.

INTERPRETATION

A significant quartz vein with a true width of up to 3.0 metres is indicated to strike east-west with a dip of -76°S. Although the quartz vein returned relatively low gold values, the high upper level mineral associated mercury values of the quartz vein may indicate increased gold values to depth. The significance of the Adit 1 quartz vein is that it occurs within 50 metres of the W96-1 drill hole where a mineral hosting quartz vein was intersected from which assays averaging 16.578 gm/t Au, 18.185 gm/t Ag, and 0.75% Cu over 6.55 metres of core or 3.81 metres of 28.43 g/t Au and 0.98% Cu. Were reported

The lower gold assays from the Adit 1 quartz zone could also be attributed to poor core recovery due to the friability of the core in the sections of high pyritic content.

Both the Adit vein and the Main Vein (W96-1) are located on the western border of a 400 metre northerly trending correlative copper-gold zone which is up to 100 metres wide. The zone is highly anomalous in copper and in gold with the copper values being up to 194 times background and the gold up to 196 times background.

Respectfully submitted,

Sookochoff Consultants Inc.



Laurence Sookochoff, PEng

VICTORY RESOURCES CORPORATION

Diamond Drilling Assessment Report

Toni Property/Wen Claim

BCGS 092H.098

SELECTED REFERENCES

Kierans, M.D., 1972: Mineral Exploration Report on the Hill Group, Wart Mountain Area for Nitracell Canada Ltd. AR 4230.

MapPlace – Map Data

Mark, D.G. – Maps and information on the results of the MMI soil survey on the WEN Claim of the AU/WEN property.

MtOnline - MINFILE downloads.

Sookchoff, L. – 2007: Geochemical Assessment Report on a MMI Soil Geochem Survey on the WEN Claim for Victory Resources Corporation.

Sookchoff, L. – 2008: Geochemical Assessment Report on a MMI Soil Geochem Survey on the TOE Claim Group for Victory Resources Corporation.

Sookchoff, L. – 2008: Assessment Report on a Diamond Drill Program on the TOE Claim Group for Victory Resources Corporation.

Sookchoff, L. – 2008: Summary Report and Recommendation on the TOE Claim Group for Victory Resources Corporation.

Verzosa, R.S. 2005: Summary Report on the AU/WEN Property for Victory Resources Corporation..

Verley, C.G. 1997: Geological and Geochemical Report on the AU Claim Group for George Resources Company Ltd. AR 24806.

Verley, C.G. 1997: Diamond Drilling Report on the WEN Claim Group for George Resources Company Ltd. AR 24800.

Verley, C.G. 2002: Preliminary Assessment Report on the AU/WEN and TOE Claim Groups for Commerce Resources Corp.

VICTORY RESOURCES CORPORATION

Diamond Drilling Assessment Report

Toni Property/Wen Claim

BCGS 092H.098

STATEMENT of COSTS

Diamond drill costs: DeLorme Drilling Ltd. (Contract)	
VRW 08-2 to VRW 08-5: 183.43 metres @ \$93.00/metre -----	\$ 17,058.99
Laurence Sookochoff, PEng	
July 4, 2008 to July 16, 2008: 13 days @ \$750./day -----	9,750.00
Auto rental, gas, meals, motel: 13 days -----	2,372.00
Assays: Acme Analytical -----	249.76
Report & associated costs -----	<u>4,500.00</u>
	\$ 33,930.75
	=====

VICTORY RESOURCES CORPORATION

Diamond Drilling Assessment Report

Toni Property/Wen Claim

BCGS 092H.098

CERTIFICATE

I, Laurence Sookochoff, of the City of Vancouver, in the Province of British Columbia, do hereby certify:

That I am a Consulting Geologist and principal of Sookochoff Consultants Inc. with an address at 120 125A-1030 Denman Street, Vancouver, BC V6G 2M6.

I, Laurence Sookochoff, further certify that:

- 1) I am a graduate of the University of British Columbia (1966) and hold a B.Sc. degree in Geology.
- 2) I have been practicing my profession for the past forty two years.
- 3) I am registered and in good standing with the Association of Professional Engineers and Geoscientists of British Columbia.
- 4) The information for this report is based on information as itemized in the Selected Reference section of this report and from the supervision and management of the diamond drill program as reported on herein.
- 5) I have no interest in the TONI Property as described herein.
- 6) I am a director, and have an option as to 150,000 shares, of Victory Resources Corporation.



Laurence Sookochoff, P. Eng.

VICTORY RESOURCES CORPORATION
Diamond Drilling Assessment Report
Toni Property/Wen Claim
BCGS 092H.098

Appendix I

ASSAY CERTIFICATE

VICTORY RESOURCES CORPORATION

Diamond Drilling Assessment Report

Toni Property/Wen Claim

BCGS 092H.098

Appendix II

DIAMOND DRILL LOGS

VRW 08-2 to VRW 08-5

VICTORY RESOURCES CORPORATION

Project: WEN

Drill Hole: W-08-04

page 2 of 2

Depth		Fractures	Lithological Description	Mineralization (0-10)		Sampling			Assay						
Feet	Metres			Py	Cpy	From (m)	To (m)	Sample #	Cu	As	Au	Hg			
Casing 7.92 m , 26 '												ppm	ppm	ppb	ppm
32.80	10	60/70, 20	Greenstone, faulted, slight hem and ep			7.920	10.92	827536	165.9	2.5	4.0	<0.01			
42.64	13		Same with stringers			10.92	13.92	827537	119.9	0.6	0.5	<0.01			
52.48	16		Unaltered, no fault			13.92	16.92	827538	136.9	0.5	<0.5	<0.01			
62.32	19		Stringers												
72.16	22		Fault them hem + heavy stringers												
82.00	25		Very heavy stringers												
91.84	28		Veins grade out to unalt, except for 2-10 cm kspar vein			25.92	28.92	827542	423.7	2.4	13.5	0.12			
101.68	31		Stringers w/ kspar xeno			28.92	31.69	827543	136.2	27.4	1318.1	0.53			
111.52	34		Gouge then qtz @ 100' . Fine grained min	3	2	31.69	34.69	827539	740.8	23.6	29	0.32			
121.36	37		Faulted " "	2	2	34.69	37.69	827540	1134.0	13.7	40.9	0.25			
131.20	40		Basalt around main min	4	3	37.69	39.59	827541	904.3	29.1	96.9	0.18			
141.04	43		Brecciated xenoliths with ep, hem chlor			39.59	40.09	827544	6340.4	77.7	373.4	0.67			
150.88	46		End of qtz @ 143 '			40.09	43.59	827545	618.8	9.4	47.2	0.09			
160.72	49		Brecciated xenoliths with ep, hem chlor, stringers, w/ occasional kspar												
170.56	52		" "			49.29	50.29	827546	26.7	2.1	2.7	<0.01			
EOH = 50.29m , 165 '															

