

2008 - 2009

PROSPECTING REPORT
"Sowaqua 4 Property"

EVENT # 4263293 TENURE # 575838
Tenure Name: Sowaqua 4

Coquahalla Gold Belt Region
New Westminster District
Map 092H

Coordinate Reference
121° 09' 27" W Longitude – 49° 21' 44" N Latitude

Report Prepared by

William Larry Amey
FMC 145191
May 1, 2009

for

Tenure Owner
Dave Reginald Chamberlain
FMC 206188

INDEX

Page	i.....	Copy of Tenure Renewal
	1.....	Cover Page
	2.....	Index
	3.....	Introduction & Location / Access / Previous Work / General Geology
	4.....	General Geology cont'd / Summary / Conclusion
	5.....	Work Record / Evaluation of Work & Cost Statement / Attending Parties & Qualifications / Affidavit
	6.....	General Location Reference - Map 1
	7.....	Prospected Area/s - Map 2
	8.....	Contour Map - Map 3

Note: Unless otherwise referenced, map submissions are enhanced excerpts from the BC Ministry's Provincial Mapping System. Scale as that shown.

NOTE - This Report is prepared for Dave Reginald Chamberlain, FMC 206188,
by William Larry Amey, FMC 145191

Introduction & Location

The Sowaqua 4 property, tenure # 575838, a 7 cell mineral claim, lies approximately 16 air kilometers due-east of Hope, and is situate along Sowaqua Creek, a northwesterly flowing tributary of the Coquihalla River. The property lies along the Coquahalla Gold Belt, a northwest trending mineralized zone, underlain by the Hozameen Fault. The general area is well notarized for hosting gold-bearing mineralization, with the more prominent deposit being that of the Carolin Mine, situate approximately 15 kilometers to the north-northwest.

Access

Access to the property is gained via a good two-lane graveled forestry road, exiting BC Highway #5 (the Coquihalla Highway) fifteen kilometers north of the BC Highway #3 intersect, at the Sowaqua Creek turnoff.

Previous Work

Previous prospecting in the general area of this tenure was conducted by A. Guyon on the A&W claim (Minfile 092HSW080), 2 ½ kilometre to the southeast. Further referencing to the locale, is described in Aris Report 11449, situate to the west. Historically, placer operations along Sowaqua Creek yielded both gold and platinum, which had been recovered at creek level and from shafts, during the 1920's (Minfile 092HSW148).

General Area Geology

In reference to the above-noted work, the tenure area's generalized geology is described as being, underlain by Permian to Jurassic Hozameen Complex rocks comprised mainly of interbedded chert, pelite and volcanic sandstones with distinct grey and black banding. The pelite is dark green and chloritized, with traces of calcareous and weakly hematitic bands. Minor quartz veinlets and secondary pyrite veinlets crosscut these metasediments. The Hozameen Complex is intruded by sill-like bodies of quartz diorite which are weakly foliated. The Hozameen fault traverses south-southeast separating the lower greenschist facies rocks of the Hozameen Complex from unmetamorphosed Mesozoic rocks to the east. Ultramafic rocks are cut by greenstones of the Hozameen Complex which generally occur along this fault. There is extensive shearing along the contact and in places the ultramafics appear to be intrusive. The ultramafic rocks which occur along the Hozameen fault are part of the Coquihalla Serpentine Belt.

..... *Geology continued*

Geology continued.....

In 1980, at the A&W showing, samples were collected from a highly altered pelite close to a serpentinized intrusion. The intrusion is described as having a granitic texture with chlorite and soft talc with clusters of radiating andalusite crystals. The pelite hosts secondary quartz and pyrite veinlets. Also, intense limonitic staining occurs adjacent to the intrusion. A grab sample from the pelite assayed 0.34 gram per tonne gold (Assessment Report 9581). Drilling in 1983 indicated short intervals of chlorite-silica- pyrrhotite in the black argillite which hosts disseminated to massive pyrrhotite. The argillite also contains quartz stringers with disseminated pyrrhotite. The pyrrhotite-rich sections in the argillite are oxidized and are associated with limonite and hematite. Thirty-three samples containing silica with visible pyrrhotite and pyrite were assayed. Assays yielded traces of gold, silver, copper and nickel (Assessment Report 11449).

Summary

Reconnaissance prospecting was conducted along the 750 metre traverse identified by red line marking on Map 2, hereto attached. The roadway served as the base line, where from, the terrain on either side of the road was inspected in attempt to ascertain the area's underlying potential. Several soil samples were examined on location with a pocket 100x microscope. Four outcroppings were also examined, three of which were on the embankment below road level, the fourth, slightly above road level.

Conclusion

From each of the soil samples, a small pinch of the matter, averaging approximately the coverage area of a dime, was thinly spread on a 3x3 examination plate, then viewed. All but one of the soil samples was void of metallic content. Of that which did, five extremely fine, flattish in appearance, flakes of gold was observed, plus an unidentified silvery-colored metal (?zinc).

Each of the four outcrops (three of which were below road level on the steep embankment, the fourth slightly above road level) were visually examined, but failed to show any indication of precious metals or sulfides. It was noted, however, the exposures were of sedimentary shale rocks types.

In that only a very small portion of the claim had been prospected, the tenure was renewed to facilitate further prospecting.

Work Evaluation & Cost Statement

-- 18.0 Man Hours Prospecting --

Labor –	June 21, 2008	9.0 hours	\$ 180.00
Supervisory –	June 21, 2008	9.0 hours	<u>\$ 270.00</u>
Total Work Credits			\$ 450.00

Meal Costs			<u>\$ 28.70</u>
	Sub Total		\$ 478.70

Allowable Vehicle Expenses (20%)			\$ 95.74
Report Preparation			<u>\$ 60.00</u>
	Total		\$ 624.44

Attending Parties & Qualifications:

Dave Chamberlain -- 4 years prospecting experience
Larry Amey -- 29 years prospecting experience

May 1, 2009



Report Prepared by
William Larry Amey
145191
for
Dave Reginald Chamberlain
206188

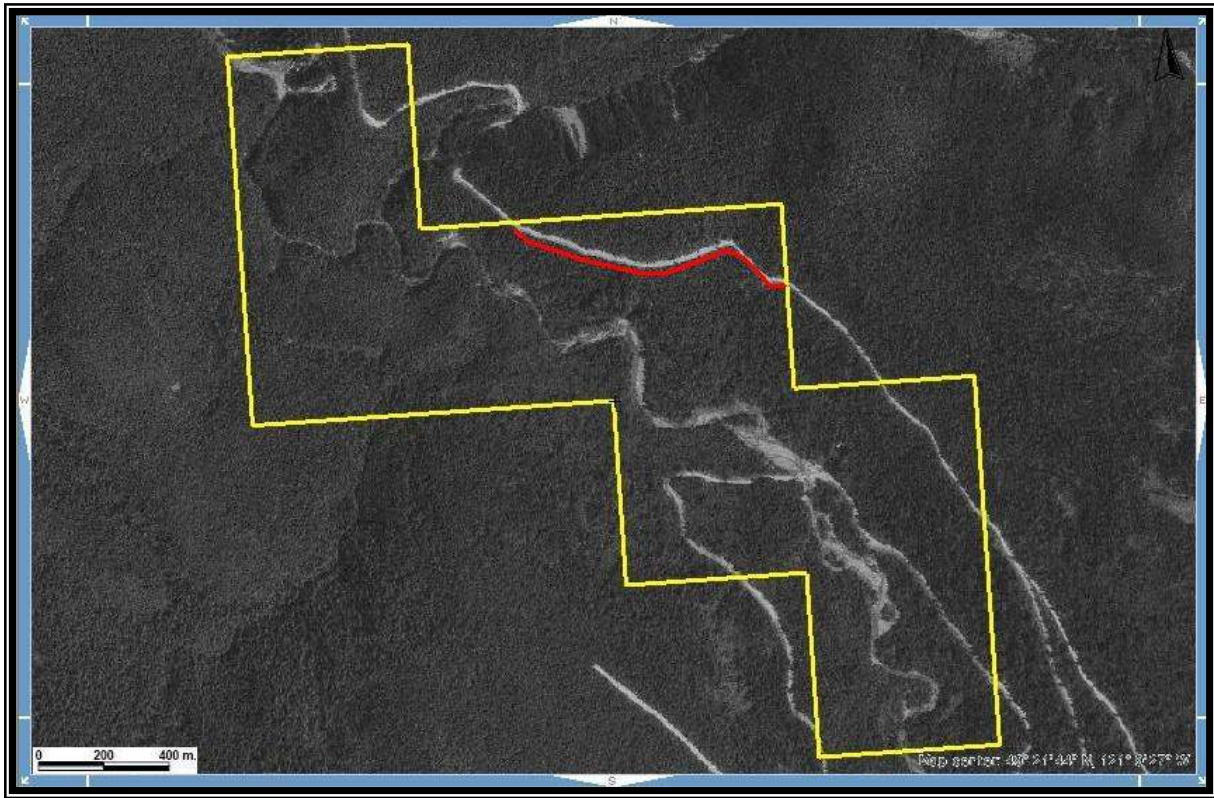
REFERENCE MAP 1

Geographical Location



REFERENCE MAP 2

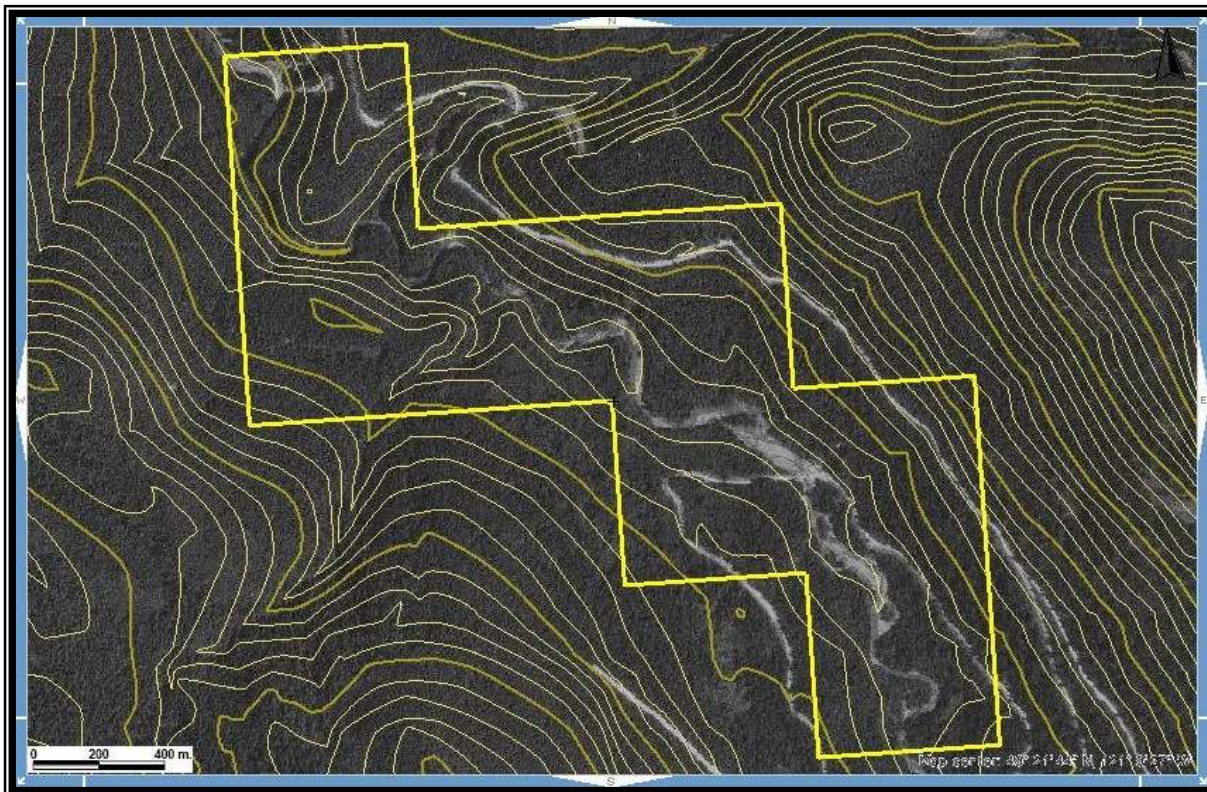
Area of Work
(Signified by Red Markings)



Scale 1: 10,000
Map 092H Excerpt
Tenure Coordinate Reference
121° 09' 27" W Longitude - 49° 21' 44" N Latitude

REFERENCE MAP 3

Contour Map of Tenure Area



Scale 1: 10,000

Map 092H Excerpt

Tenure Coordinate Reference

121° 09' 27" W Longitude - 49° 21' 44" N Latitude