

**BC Geological Survey  
Assessment Report  
30876**

**2008 - 2009**

**PROSPECTING REPORT**

**“Sowaqua 1 Property”**

**EVENT # 4270430      TENURE # 575829**

**Tenure Name: Sowaqua 1**

**New Westminster Mining Division**

**Map 092H**

**Central Coordinate Reference**

**121° 13' 00.7" W Longitude – 49° 24' 36.9" N Latitude**

**Report Date – June 4, 2009**

**prepared on behalf of**

**Sarah Della Lila Amey – Owner**

**FMC 206187**

**by**

**William Larry Amey**

**FMC 145191**

## INDEX

Page	i.....	Copy of Tenure Renewal
	1.....	Cover Page
	2.....	Index
	3.....	Introduction / Location & Access / Geology
	4.....	Summary / Conclusion
	5.....	Work Evaluation & Cost Statement / Attending Parties & Qualifications / Affidavit
	6.....	General Location Reference Map - Map 1
	7.....	Work Area Map - Map 2
	8.....	Contour Map - Map 3

**Note: Unless otherwise referenced, map submissions are enhanced excerpts from the BC Ministry's Provincial Mapping System. Scale as that shown.**

## **Introduction**

The Sowaqua 1 mineral claim, tenure # 575829, a nine cell claim, comprising 189.21 hectares, is situated approximately 16 air kilometers east of Hope, along Sowaqua Creek, a northwesterly flowing tributary of the Coquihalla River. The claim lies in the Cascade Mountains, along the Coquahalla Gold Belt, characterized by the Hozameen Fault, a mineralized northwest-trending serpentine belt, which extends from the Boston Bar area in the north, to well within Washington State, in the south. The general area is well notarized as hosting gold-bearing mineralization, with the past producing Carolin Mine situated approximately 13.5 kilometers to the north-northwest. The claim was staked on February 9, 2008, to explore for potential gold mineralization.

## **Location & Access**

The Sowaqua 1 claim is centrally situated on coordinates 121° 12' 04" W Longitude, 49° 24' 00" N Latitude. Access to the property is gained via the Sowaqua Creek Forest Service Road, a seasonally-good two-lane gravel road, leaving BC Highway #5 at Exit 192 (Sowaqua Creek Exit), fifteen kilometers north of the BC Highway #3 intersect. The claim fundamentally follows and encompasses both Sowaqua Creek and the FSR. The claim is located approximately 400 metres beyond the steel gate at the 9 kilometre mark. Elevation over the tenure area ranges from 880m above sea level at the central northeast portion of the claim, to 920m at the central southwest. The tenure is conducive to prospecting for approximately five to six months out of the year, generally commencing in May to early June.

## **Geology of the General Tenure Area**

Based on GSC mapping, which places the Hozameen Fault cutting through the western portion of the Sowaqua 1 property, the underlying geology of the tenure area can be divided into two primary groups: the Lower and Middle Jurassic Ladner Group which underlies the central and eastern half of the claim, and Ultramafic rocks of indeterminate age which underlie the western half of the claim. Lithologically, the Ladner Group consists of pelite and volcanic sandstone. Of more interest are the ultramafic rocks which consist of serpentinite, serpentinized peridotite and pyroxenite.

The area underlain by Permian to Jurassic Hozameen Complex rocks, are comprised mainly of interbedded chert, pelite and volcanic sandstones with distinct grey and black banding. The pelite is dark green and chloritized, with traces of calcareous and weakly hematitic bands. Minor quartz veinlets and secondary pyrite veinlets crosscut these metasediments. The Hozameen Complex is intruded by sill-like bodies of quartz diorite which are weakly foliated. The Hozameen Fault, traversing south-southeast, separates the lower greenschist facies rocks of the Hozameen Complex from unmetamorphosed Mesozoic rocks to the east. Ultramafic rocks are cut by greenstones of the Hozameen Complex which generally occur along this fault. There is extensive shearing along the contact and in places the ultramafics appear to be intrusive. The ultramafic rocks which occur along the Hozameen fault are part of the Coquihalla Serpentine Belt.

## **Summary**

On October 6, 2008, prospecting was carried out on foot, following an old roadway which branches off the east side of the Sowaqua Creek FSR, and extends up the mountain. Said traverse is shown on Map 2, hereto attached. The areas bordering the road were inspected for outcrops and other land features that might suggest or reveal geology associated to precious metal potential.

On the following date, October 7, 2008, focus shifted to examining the gravels of Sowaqua Creek, in effort to evaluate if float existed which might reveal a potential deposit. The creek was randomly panned along the corresponding traverse shown on Map 2. Random bank and soil samples were also panned, of which comprised light to moderate clay content, accompanied the sampling. The open embankments (though few) appeared to bear more of the clay content, than was realized in other stretches of the creek. Though in estimate only, approximately one cubic metre of material was panned, the cons of which were bagged and later processed. Though also prospecting for same, no outcrops were encountered at creek level.

## **Conclusion**

Prospecting on the old roadway on October 6<sup>th</sup> failed to be productive, though several samples were examined over the traverse. None held geology indicative of hosting or bearing association to precious metal mineralization. Panning, however, established the presence of fine gold, yet this was shown to be directly associated to clay deposition. The amount recovered was rather minimal and not felt worthy to engage required efforts to cause for its measure. Commonly, its fineness and sparse distribution might suggest a distant source, but in this case it is felt its presence (at least in this immediate location) was subject to glacial redistribution. The tenure was renewed to permit further exploration on the property.

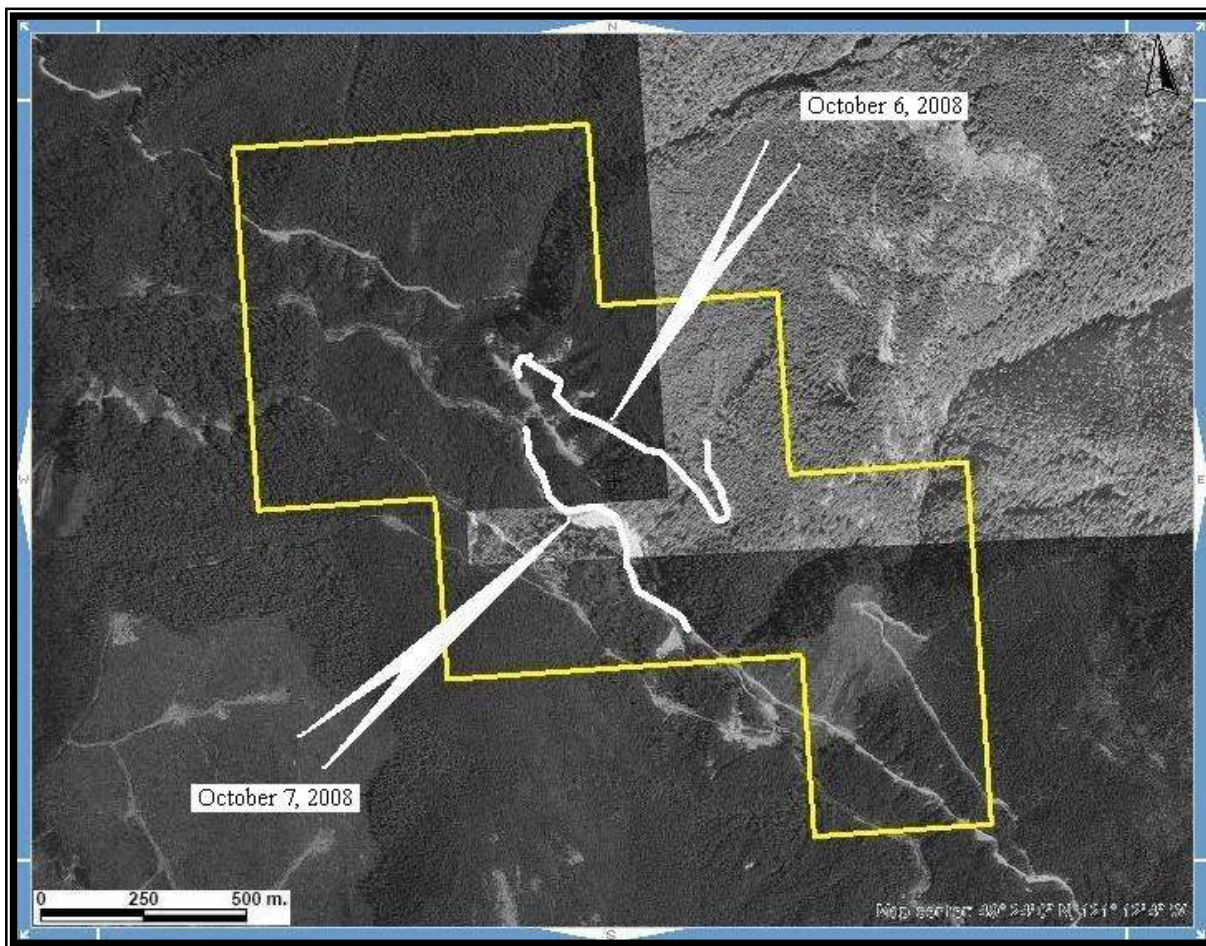


# REFERENCE MAP 1

## Claim Geographical Location



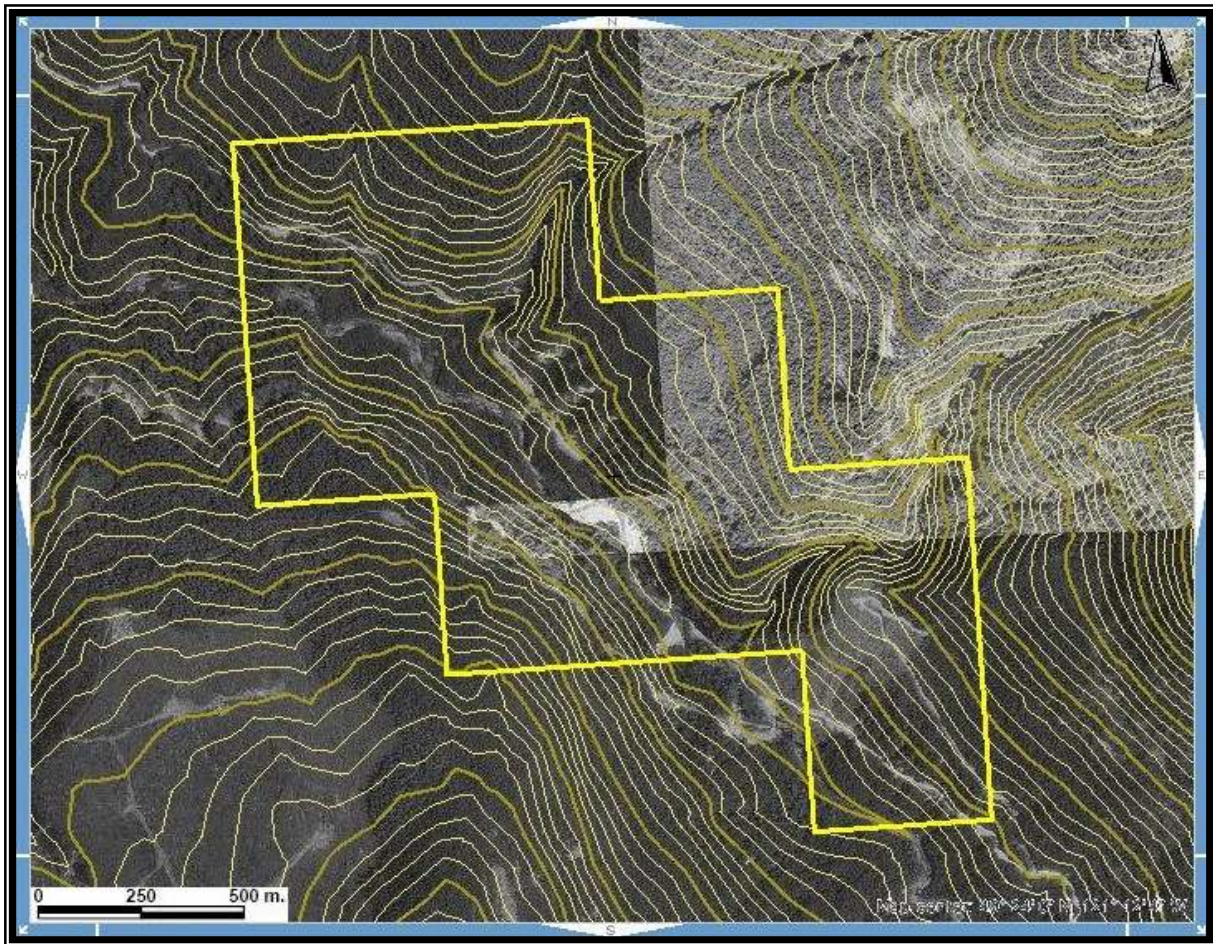
**MAP 2**  
**Work Areas**



**Scale 1:12,000**  
**Map 092H Excerpt**  
**Tenure Coordinate Reference**  
**121° 13' 00.7" W Longitude – 49° 24' 36.9" N Latitude**

**MAP 3**

**Contour Map of Claim Area**



Scale 1: 12,000

**Map 092H Excerpt**

**Tenure Coordinate Reference**

**121° 13' 00.7" W Longitude – 49° 24' 36.9" N Latitude**