

**BC Geological Survey
Assessment Report
30881**

2008 - 2009

**PROSPECTING REPORT
“Peers Four Property”**

**EVENT # 4274451 TENURE # 581021
Tenure Name: Peers Four**

**New Westminster Division
Map 092H**

**Central Coordinate Reference
121° 14' 19.5” W Longitude – 49° 22' 21.9” N Latitude**

Report Date – June 5, 2009

prepared for

**Dave Reginald Chamberlain
FMC 206188**

by

**William Larry Amey
FMC 145191**

INDEX

Page	i.....	Copy of Tenure Renewal
	1.....	Cover Page
	2.....	Index
	3.....	Introduction / Location & Access / Summary / Conclusion
	4.....	Conclusion continued / Work Evaluation & Cost Statement /Attending Parties & Qualifications / Affidavit
	5.....	General Location Reference Map - Map 1
	6.....	Work Area Map - Map 2
	7.....	Contour Map - Map 3

Note: Unless otherwise referenced, map submissions are enhanced excerpts from the BC Ministry's Provincial Mapping System. Scale as that shown.

Introduction

The Peers Four mineral property, # 581021, a four cell mineral claim comprising 84.13 hectares, was staked April 11, 2008. Cut by Peers Creek throughout its length, the Peers Four property occupies the valley's extreme eastern end. The vast majority of the claim is underlain by sedimentary rocks, while the tip of the extreme west end comprises volcanic rocks. The Peers Creek region lies in a geological setting influenced by the northwest trending Hozameen Fault, a gold bearing structure better known as the Coquihalla Gold Belt. Previous work in the '70s and again in the later '80s had identified areas along Peers Creek which appeared to bear economic potential. Earlier placer operations along the creek involved hydraulicing, through which both gold and platinum were recovered. However, those operations did not last, due to the lack of insufficient water. Since the '80s, little attention has been given to the area. The Peers Creek Valley lies in an area which receives above average summer and winter precipitation, resulting in considerable underbrush and forest growth. Elevations over the claim range from, 1200m at the northeast corner of the claim, dropping to 860m at the upper valley floor, to 800m at lower extremity, on the east end of the valley. The property is conducive to prospecting for six months out of the year, generally from May to October.

Location & Access

The Peers Four claim is centrally located on coordinate 121° 14' 19.5" W Longitude, 49° 22' 21.9" N Latitude, within map area 092H, and occupies the eastern end of the Peers Creek Valley, 11.4 kilometres east of Hope, British Columbia. Peers Creek, a west flowing tributary of the Coquihalla River, merges with the river in the lower Coquihalla Canyon area, at the intersect of BC Highway 5 and Exit 183, the Orthello turnoff. Said Exit lies 5.8 road kilometres north of the Highway 5 junction with BC Highway 3. In accessing the property, immediately upon turning off Highway #5 at said Orthello Exit, cross the bridge spanning the Coquihalla River, thence follow the old FSR for a distance of 4.9 kilometres to the claim's western boundary at Longitude coordinate 121° 15' 04.5." However, until such time as alternative measures have been taken to bridge the creek where the former FSR bridge had been removed, access would then be on foot. In alternative, the property lies at a five minute helicopter commute from Hope.

Summary

The Peers Four tenure, one of four properties along Peers Creek held by the title owner, was prospected on two dates, commencing on September 19, 2008, and completing on the 20th. On the 19th prospecting was conducted on the Peers Two property, thence carried over to the Peers Four property, temporarily bypassing Peers Three in order to facilitate setting up camp at the desired location. Map 2, hereto attached, identifies the traverses prospected on the Peers Four claim, with the campsite location identified with a circle. On September 19th the balance of the work day focused on detecting and prospecting in the vicinity of the camp site and up a small feeder creek to the north (See Map 2). On the 20th the traverse extended eastward (as shown), including a short traverse to Peers Creek to sample the stream gravels and sediments. Camp was demobilized in the later morning and the party then moved onto the Peers Three property, to conduct prospecting on that tenure.

Conclusion

Detecting around the camp area resulted in four small nuggets being recovered, from and along, the embankment, collectively weighing 0.823 grams. Equipment used were Whites and a Garrett detector. A showing of fine gold was evidenced in panned samples from the small drainage feeder to the north.

Conclusion continued.....

Two random rock samples were secured along the roadway over the eastward traverse. Specimens from both of these samples were finely ground then viewed under microscope, whereby one sample proved void of metals, while the second, held fine to trace amounts of copper, zinc, lead and manganese. From the few pans sampled at the creek (see Creek Sampling – Map 2) again, good showings of fine gold was realized, but not enough from the time spent, to consider establishing weight. The area appeared well warranting for considerably more explorations, thus, the property was renewed for a further term.

Work Evaluation & Cost Statement

-- 15.0 Man Hours Prospecting --

Labor – Dave Chamberlain.....	Sept 19 & 20, 2008	5.00 hours	\$ 100.00
Labor – Bill Martin.....	Sept 19 & 20, 2008	5.00 hours	\$ 100.00
Supervisory –			
Larry Amey.....	Sept 19 & 20, 2008	5.00 hours	\$ 150.00
		Total Work Credits	\$ 350.00
Accommodations	shared with other tenures	1/3 =	\$ 70.00
Meal Costs	shared with other tenures	1/3 =	\$ 29.60
		Sub Total	\$ 449.60
Allowable Vehicle Expenses (20%)			\$ 89.92
Report Preparation			\$ 60.00
		Total	\$ 599.52

Attending Parties & Qualifications:

Dave Chamberlain - - 4 years prospecting experience
 Bill Martin - - 7 years mining related experience
 Larry Amey - - 29 years prospecting experience

June 5, 2009



Prepared by
 William Larry Amey
 FMC 145191

REFERENCE MAP 1



Claim Geographical Location

MAP 2

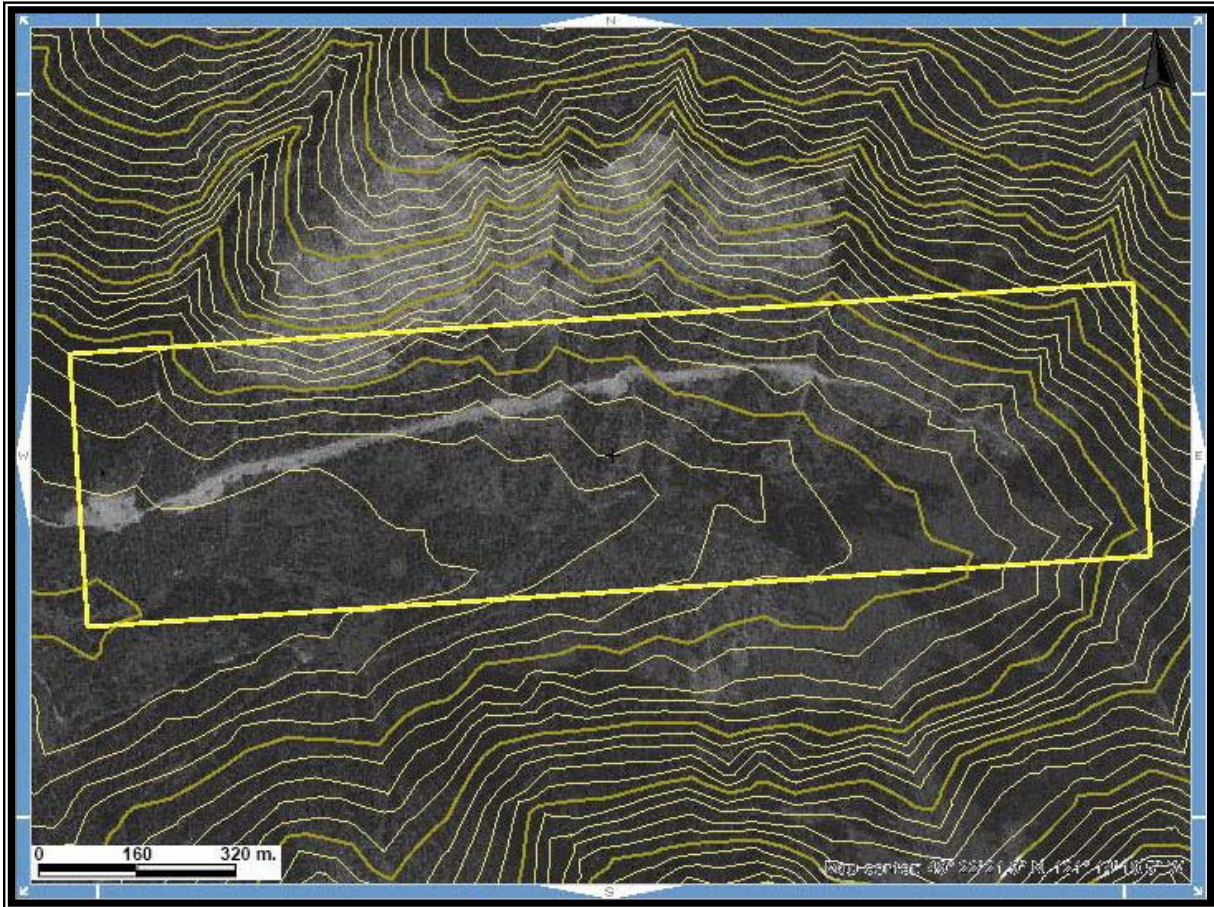
Area of Work



Scale 1:8,000
Map 092H Excerpt
Tenure Coordinate Reference
121° 14' 19.5" W Longitude – 49° 22' 21.9" N Latitude

MAP 3

Claim Contour Map



Scale 1: 8,000
Map 092H Excerpt
Tenure Coordinate Reference
121° 14' 19.5" W Longitude – 49° 22' 21.9" N Latitude