

**BC Geological Survey
Assessment Report
30882**

2008 - 2009

PROSPECTING REPORT

“Peers Two Property”

EVENT # 4274447 TENURE # 581013

Tenure Name: Peers Two

New Westminster Division

Map 092H

Central Coordinate Reference

121° 16' 45.8” W Longitude – 49° 22' 43.5” N Latitude

Report Date – June 5, 2009

prepared for

Dave Reginald Chamberlain

FMC 206188

by

William Larry Amey

FMC 145191

INDEX

Page	i.....	Copy of Tenure Renewal
	1.....	Cover Page
	2.....	Index
	3.....	Introduction / Location & Access / Summary / Conclusion
	4.....	Work Evaluation & Cost Statement /Attending Parties & Qualifications / Affidavit
	5.....	General Location Reference Map - Map 1
	6.....	Work Area Map - Map 2
	7.....	Contour Map - Map 3

Note: Unless otherwise referenced, map submissions are enhanced excerpts from the BC Ministry's Provincial Mapping System. Scale as that shown.

Introduction

The Peers Two mineral property, # 581013, a four cell mineral claim comprising 84.13 hectares, was staked April 11, 2008, to prospect the area for precious metals. The claim is cut by two north trending contacts, dividing the underlying geology between the sedimentary rocks in the central sector, from that of the basaltic volcanic rocks of both remaining outer sectors. Peers Creek, an east to west flowing tributary of the Coquihalla River, and the FSR which follows its course, extends through the claim's length. The Peers Creek region lies in a geological setting influenced by the northwest trending Hozameen Fault, a gold bearing structure better known as the Coquihalla Gold Belt. Previous work in the '70s and again in the later '80s had identified areas along Peers Creek which appeared to bear economic potential. Earlier placer operations along the creek involved hydraulic mining, through which both gold and platinum were recovered. However, those operations did not last, due to the lack of insufficient water. Since the '80s, little attention has been given to the area. The Peers Creek Valley lies in an area which receives above average summer and winter precipitation, resulting in considerable underbrush and forest growth. Elevations over the claim range from, 660m in the east, to 460m in the west, both of which are measured at creek level, with 755m at the southwest corner of the property, to 760m in the north. The property is conducive to prospecting for six months out of the year, generally from May to October.

Location & Access

The Peers Two claim is centrally located on coordinate 121° 16' 45.8" W Longitude, 49° 22' 43.5" N Latitude, within map area 092H, and occupies the west-central valley area of Peers Creek, 8.6 kilometres east of Hope, British Columbia. Peers Creek, a west flowing tributary of the Coquihalla River, merges with the river in the lower Coquihalla Canyon area, at the intersect of BC Highway 5 and Exit 183, the Orthello turnoff. Said Exit lies 5.8 road kilometres north of the Highway 5 junction with BC Highway 3. In accessing the property, immediately upon turning off Highway #5 at said Orthello Exit, cross the bridge spanning the Coquihalla River, thence follow the old FSR for a distance of 2.1 kilometres to the claim's western boundary at Longitude coordinate 121° 17' 19.5." However, until such time as alternative measures have been taken to bridge the creek where the former FSR bridge had been removed, access would then be on foot. In alternative, the property lies at a five minute helicopter commute from Hope.

Summary

While examining outcrops, rocks and other geology of interest along the way, the party of three hiked deep into the claim to within 50 metres of a spur road leading northwest. Four chip samples were taken along the way (approximate locations noted on mapping). The party then temporarily stowed the gear and descended the slope to sample creek gravels, where after, reconnaissance prospecting and area familiarization carried on, along the old FSR, subsequently leaving this tenure and on to the next to be prospected (the Peers Three tenure) at Longitude coordinate 121° 16' 12.1."

Conclusion

The four chip samples were later viewed under 100x field microscope, rendering three non-concerning, while the remaining sample proved to host a small percentage of native copper, pyrite and ?zinc. No gold or other precious metal was observed. From pan sampling the creek, fine flecks of gold were recovered, but not enough to justify weighing. In the general scope, the area appeared well warranting for further explorations, and thus, the property was renewed for a further term.

Work Evaluation & Cost Statement

-- 9.0 Man Hours Prospecting --

Labor – Dave Chamberlain.....	September 19, 2008	3.00 hours	\$ 60.00
Labor – Bill Martin.....	September 19, 2008	3.00 hours	\$ 60.00
Supervisory – Larry Amey.....	September 19, 2008	<u>3.00 hours</u>	<u>\$ 90.00</u>
Total Work Credits			\$ 210.00
Accommodations	shared with other tenures	1/3 =	\$ 70.00
Meal Costs	shared with other tenures	1/3 =	<u>\$ 29.60</u>
Sub Total			\$ 309.60
Allowable Vehicle Expenses (20%)			\$ 61.92
Report Preparation			<u>\$ 60.00</u>
Total			\$ 431.52

Attending Parties & Qualifications:

Dave Chamberlain - - 4 years prospecting experience
 Bill Martin - - 7 years mining related experience
 Larry Amey - - 29 years prospecting experience

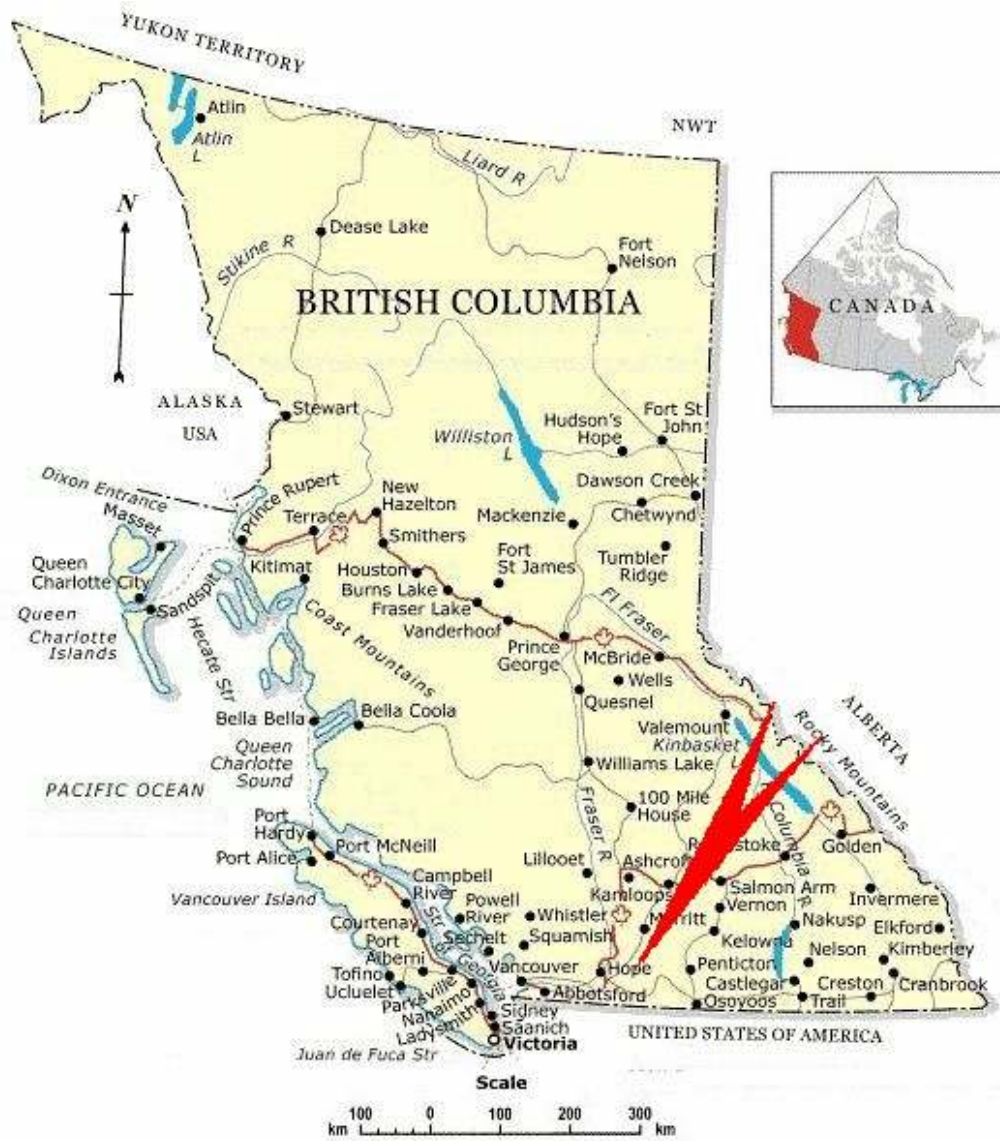
June 5, 2009



Prepared by
 William Larry Amey
 FMC 145191

REFERENCE MAP 1

Claim Geographical Location



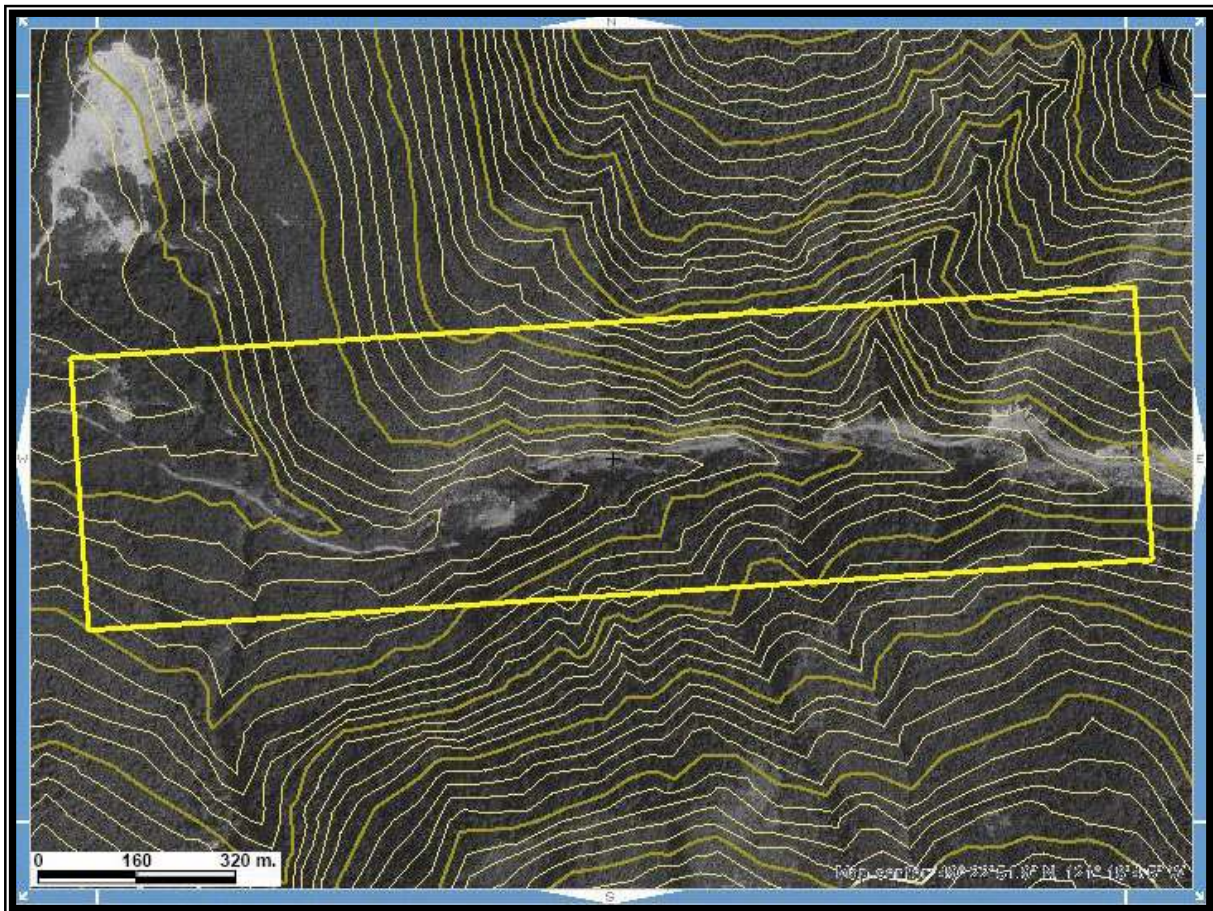
MAP 2

Area of Work



Scale 1:8,000
Map 092H Excerpt
Tenure Coordinate Reference
121° 16' 45.8\" W Longitude – 49° 22' 43.5\" N Latitude

MAP 3
Claim Contour Map



Scale 1: 8,000
Map 092H Excerpt
Tenure Coordinate Reference
121° 16' 45.8" W Longitude – 49° 22' 43.5" N Latitude