

RECEIVED
AUG 19 2009
Gold Commissioner's Office
VANCOUVER, B.C.

**ASSESSMENT REPORT
PROSPECTING PROGRAM**

**BC Geological Survey
Assessment Report
31009**

**MS PEG PROPERTY
FORT STEELE MINING DIVISION**

N.T.S. MAP SHEET 082F.070

UTM COORDINATES 54997000N – 565000E

Work Performed Spring 2009

OWNER
Sara Kennedy
2290 Dewolfe Ave.
Kimberley BC V1A 1P5

REPORT BY
Craig Kennedy
Prospector
2290 Dewolfe Ave.
Kimberley BC V1A 1P5

**BC GEOLOGICAL SURVEY BRANCH
ASSESSMENT REPORT
31009**

July 2009

Table of Contents

	<u>Page</u>
1.00 INTRODUCTION	3
1.10 Location & Access	3
1.20 Physiography	3
1.30 History of Previous Exploration	3
2.00 PROSPECTING	6
3.00 CONCLUSION	7
4.00 STATEMENT OF EXPENDITURES	8
5.00 AUTHOR'S QUALIFICATIONS	9

List of Illustrations

Figure 1-Regional Property Location Map	4
Figure 2-Claim Location Map	5
Figure 3-Prospecting Map	In pocket

Ms Peg Property

PROSPECTING ASSESSMENT REPORT

Craig Kennedy

July 2009

1.00 INTRODUCTION

This report describes the initial prospecting on the Ms Peg property on the north west flank of Mathew Creek on the lower St May River. It is owned by Sara Kennedy of Kimberley BC.

1.10 LOCATION & ACCESS

The Ms Peg claim group is centered approximately 8 km west of Kimberley BC. Access to the area of interest is provided by the Bootleg mainline logging road and many spur haul roads. The property is centered at UTM coordinates 565000E and 54997000N. The elevation ranges from 1200 to 1400 meters.

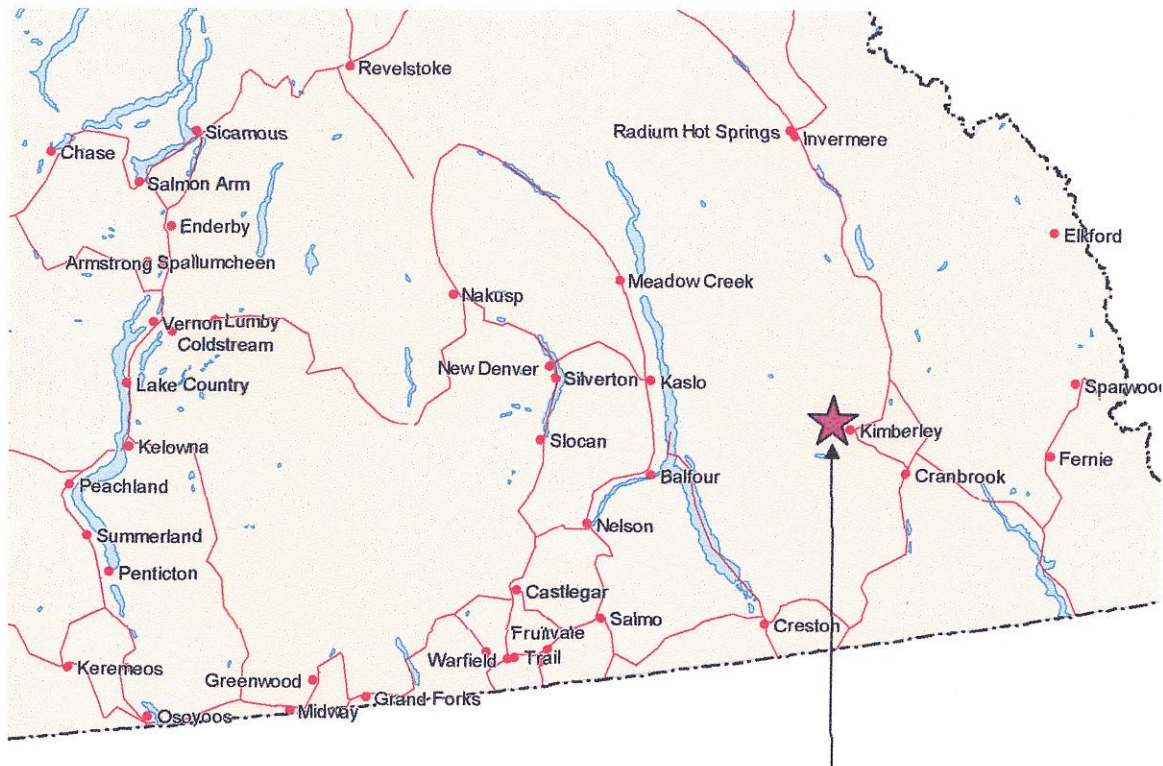
1.20 PHYSIOGRAPHY

Forest cover is mostly pine, fir and larch with multiple ages of industrial logging affecting the profile. Areas logged in the late 60's, 70's and 80's are difficult to traverse due to thick regrowth. Moderate to gentle slopes are prevalent on the property, good road access provides easy entry to the entire property.

1.30 HISTORY OF PREVIOUS EXPLORATION

The Property has one Minfile occurrence – Bulldog 082FNE088. This working was probably active during the early 1900's. Work in the late 1980's and early 1990's was mainly concerned with looking for massive sulphide "Sullivan" type deposits. (Assessment reports 13632, 14358, 23580, 24649 and 25217) Recent work has concentrated on the search for rare earth elements associated with Proterozoic pegmatites. (Assessment report 26701)

Figure 1: Regional location map

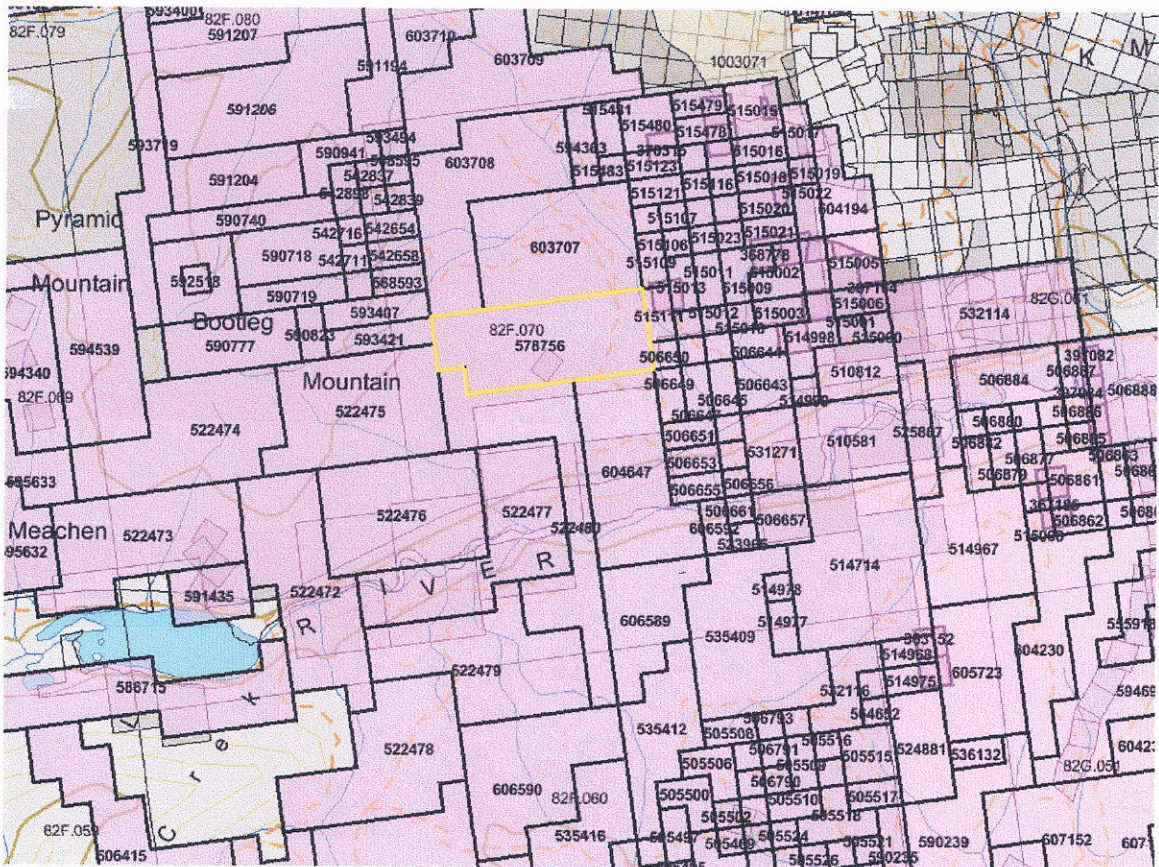


Ms Peg Property Location

Figure 2: Claim Location Map

Map # 082F.070

Scale 1:100,000



Tenure # 578756

2.00 PROSPECTING REPORT

Initial prospecting has been completed on the Ms Peg Property. Twenty rock samples were collected during the prospecting program, these will be analysed when funding becomes available. The property was staked to cover an area which hosts the Matthew Creek Pegmatite and a number of large dikes or sills within a micaceous – sillimanite grade metamorphic complex. The satellite pegmatite sills and or dikes host beryllium crystals with some hosting black tourmaline crystals. Of interest is the existence of a large body of quartz. The quartz vein is one of a number of veins which are hosted in the nose of a north trending tight fold. A minfile occurrence exists on the vein system, minfile: Bulldog 082FNE088.

The workings are quite extensive with a number of trenches, shafts and one caved adit. Sulphides are rare in the larger quartz veins; the lower caved adit has a large dump with abundant sulphide rich material on it. The dump quartz vein material has disseminated grains of pyrite associated with black tourmaline crystals. Other rusty material contains pyrite, pyrrhotite and rare chalcopyrite. The parent material seems to be a silicified diabase or diorite. As mention above the quartz seems to be hosted in the nose of an antiform fold.

The hanging wall of the quartz is made up of thin bedded sediments predominantly siltstone which look like typical lower aldrige rocks. The quartz host rocks and footwall rocks are muscovite rich shists with quartz boudins tourmaline and garnets. A number of zones of coarse grained white and grey quartzites exist within the metamorphic complex. These bands of quartzite are not typical of lower Aldridge rocks. The pegmatite sills and dikes which host beryl crystals are also quartz rich with better crystals being developed in conjunction with quartz veining.

3.00 CONCLUSION

The large quartz vein at the Bulldog Minfile 082FNE088 is one of many quartz bodies existing within the nose of a tight northeast antiform. The quartz veining is seemingly related to the injection of the pegmatite bodies. The pegmatite is wide spread with dikes and or sills hosting black tourmaline and beryl. It is recommended more prospecting be done to determine whether any of the veins might host gold mineralization.

4.00 STATEMENT OF EXPENDITURES

Prospecting Program
Ms Peg Property

Work performed: April 2009

PROSPECTING CONTRACTORS:

Craig Kennedy, Kimberley BC 4 days @ \$500/day (includes 4X4 vehicle)	\$2000.00
Craig Kennedy - report preparation and writing 1 day @ \$350.00/day (includes typing, drafting & supplies)	<u>350.00</u>
Total:	<u>\$2350.00</u>

Craig Kennedy
Craig Kennedy
Prospector

5.00 STATEMENT OF QUALIFICATIONS

As the author of this report I, Craig Kennedy, certify that:

1. I am an independent prospector residing at 2290 Dewolfe Avenue, Kimberley, BC.
2. I have been actively prospecting in the East and West Kootenays district of BC for the past 30 years and have made my living prospecting for the past 22 years.
3. I have been employed as a professional prospector by major and junior mineral exploration companies.
4. I own and maintain mineral claims in BC and have optioned numerous claims to various exploration companies.

Craig Kennedy

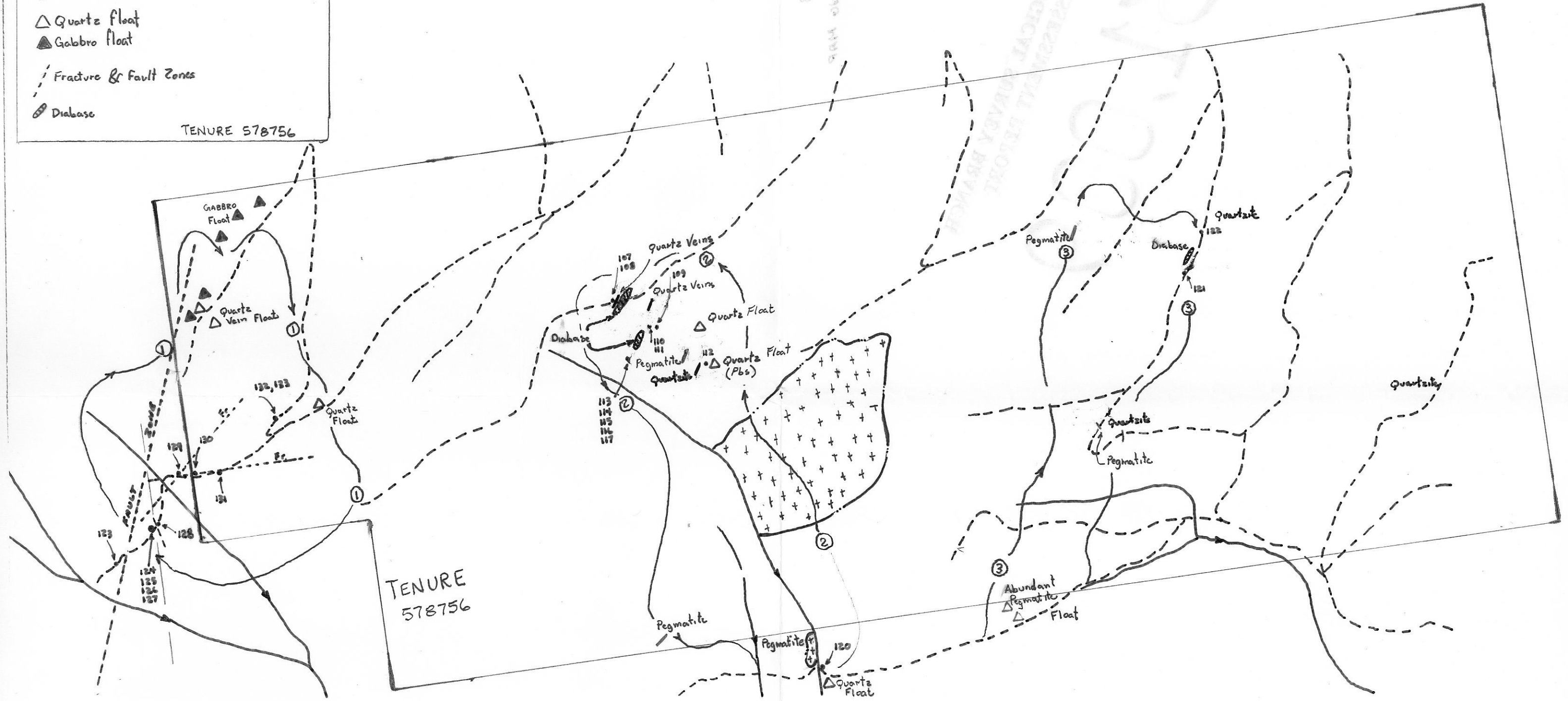
Craig Kennedy
Prospector

LEGEND

- // Quartz Veins
- ⊞ Pegmatites
- ⊞ Pegmatite Bodies
- △ Quartz float
- ▲ Gabbro float
- - - Fracture & Fault Zones
- Diabase

① Prospecting Routes

TENURE 578756



SCALE 1:10,000

118
119

PROSPECTING MAP

GEOLOGICAL SURVEY BRANCH
MINERAL RESOURCES DIVISION