

MINERAL TITLES BRANCH  
File  
Rec'd  
MAY 26 2010  
L.I.#  
VANCOUVER, B.C.

**Statement Of Work**  
**CASH CLAIMS**  
**Similkameen Mining Division**  
**British Columbia**

**RECEIVED**  
AUG 31 2009  
Gold Commissioner's Office  
VANCOUVER, B.C.

N.T.S. Map Area 92H/9W/10E  
Latitude: 49° 34' North  
Longitude: 120° 30' West

Tenure #591176  
Tenure #591274

**BC Geological Survey  
Assessment Report  
31043**

by  
Michael R. Lee  
60562 Granville Park  
Vancouver, BC  
V6H 4B9

**GEOLOGICAL SURVEY BRANCH  
ASSESSMENT REPORT**

**31,043**

August 12, 2009

## **Table Of Contents**

<b><u>1.0</u></b>	<b>The Geology and History Of the Cash Claims Group.....</b>	<b>3</b>
<b><u>2.0</u></b>	<b>Claims Location and Access.....</b>	<b>3</b>
<b><u>3.0</u></b>	<b>Work Done On Cash 18 and Cash 25 Mining Claims Property July, 2009 .....</b>	<b>5</b>

## **1.0 The Geology and History of the Cash Claims Group**

The Princeton area of southwest BC has been historically known for its deposits of copper, placer gold and coal.

Potentially economic deposits of zeolite were only recognized during the early 1980's and initially described by Read in 1986. Later mapping (Read 1986 -1987. see Appendix 4) describes six stratigraphic units which exhibit some level of zeolitization including:

- 1) the Sunday Creek Tephra;
- 2) Snowpatch Ash;
- 3) Asp Creek Ash;
- 4) Summers Creek Sandstone;
- 5) Tailings Ash
- 6) Bromley Vale Tephra.

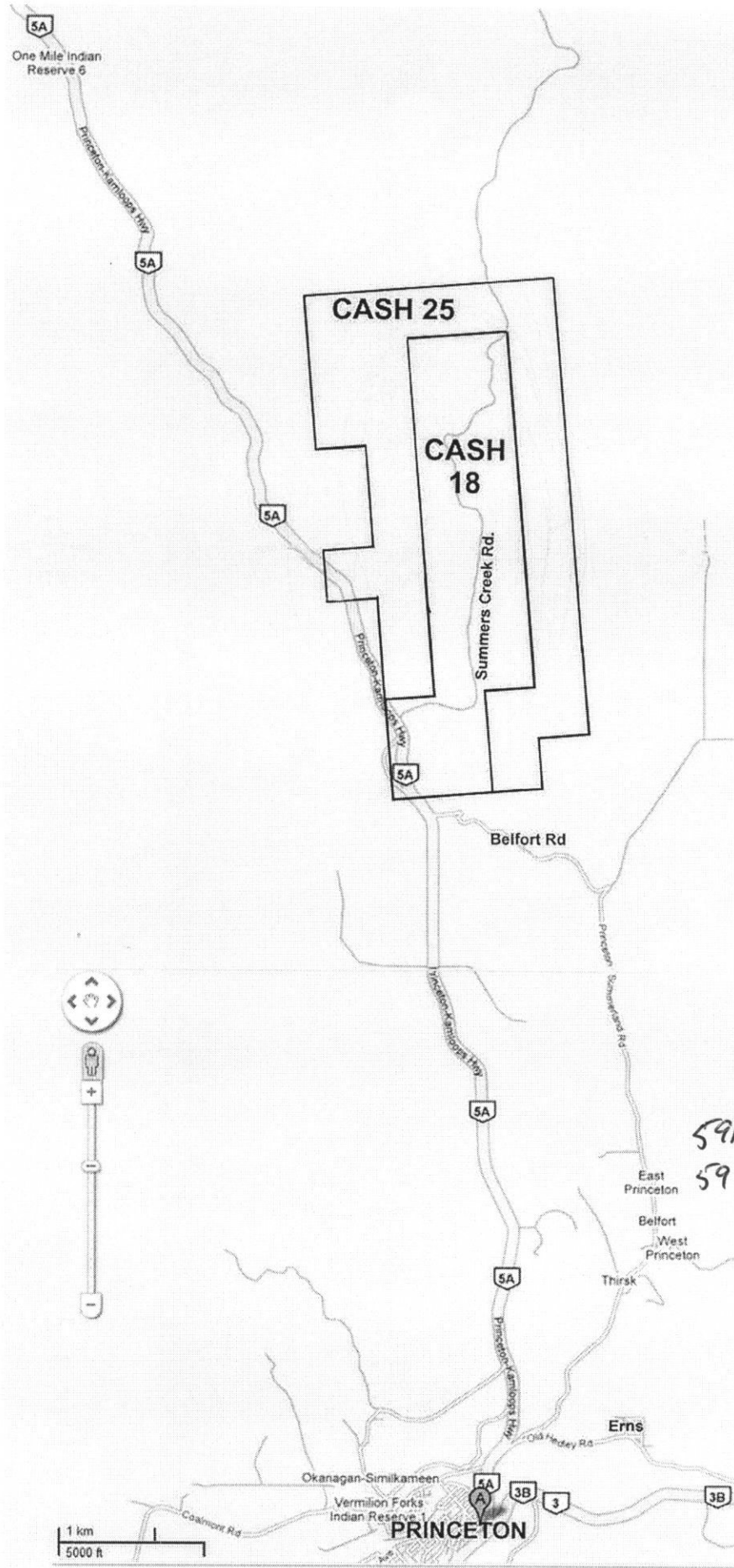
The Cash Claims Group are underlain by arkosic sandstone which forms the Summers Creek unit of the Allenby Formation, the dominant component of the sequence of Eocene Strata which form the Princeton Basin. Zeolite is a component of the sandstone, probably as an alteration product of Feldspar. Zeolite rocks of variable purity were observed on the original Cash 1 and 2 Claims (Douglas H. Hopper original tenure numbers N.T.S. 092/H0/58 - 1994, #332276 and #332277). On the east slopes above Summers Creek valley they form a thick section of imbedded medium grained arkosic striking at 80° to 90° dipping 20° to 30° south. (reference: Report by T. Sadler-Brown Dec 8 1995. see Appendix 5)

The claims were initially prospected by Douglas H. Hopper who observed and sampled several of the zeolite occurrences. (reference Report by Douglas H. Hopper February 8, 1999)

Zeolitized rocks occur within the claims on both sides of Summers Creek but the most extensive and accessible exposures occur on the west of Summers Creek on the slopes on the hillsides beside Summers Creek Rd.

## **2.0 Claims Location and Access:**

The South-West portion of the Cash 18 and Cash 25 are located at North of the junction Belfort Road and Highway 5a, located approximately 6 km north of the town of Princeton, BC. The western portion of Cash 25 is centred along Highway 5a, just north of the Belfort Road and Highway 5a Junction and continues north of Summers Creek Rd and Highway 5a junction on either side of Highway 5 approximately 6 km north towards One Mile Indian Reserve 6. The eastern side of the claims are centered along Summers Creek Rd. and on both sides of Summers Creek north to the Summers Creek Bridge. Access is via the paved Highway 5a from the town of Princeton, BC and gravelled Summers Creek Rd.



MAP # 1



CLAIMS OWNED

591274-CASH 25

591176-CASH 18

1 km  
5000 ft



### **3.0 Work Done On Cash 18 and Cash 25 Mining Claims Property July, 2009**

**July 04 , 2009:** We drove from Burnaby, BC to Princeton, BC and then due north along Highway 5 and arrived at the SW portion of the claims site (CASH 18 - Tenure #591176 and CASH 25 - Tenure #591274) approximately 12 km due North of Princeton, BC and then drove north along Highway 5 to the extent of the claims site , according to the GPS readings. We then proceeded back South to the intersection of Highway 5 and Summer Creek Rd., located in the SW corner of the CASH 18 claims and proceeded East and then North along Summer Rd intersecting the claims site (Tenure #591176 and Tenure #591274). After visually analysing the various rock anomalies, we returned to the SW corner of the claims site (Summer Creek Rd and Highway 5).

We then proceeded back East and then North along Summer Creek Rd. and prospected and grabbed rock samples for assay.

Sample #1: (grey) Sample dug from Hillside up from about Summer Creek Rd.

North 49' 32.590 latitude  
West 120' 31.336 longitude (see map 2)

Sample #2: (white-grey) On Summer Creek Rd Just North of the ranch house located n near the junction of Highway 5 and Summer Creek Rd. (see map)

North 49' 32.375 latitude  
West 120' 30.418 longitude (see map 2)

**July 05 , 2009:** We drove from Princeton, BC due north along Highway 5 and arrived at the SW portion of the claims site (CASH 18 and CASH 25) approximately 12 km due North of Princeton, BC and then drove east-north along Summer Creek Rd.

The first sample was found near the north end of Summer Creek Rd., near the Bridge which is the North/East extent of the CASH 18 and CASH 25 claims, according to the GPS readings.

Sample #3: (white-grey) Large Samples Grabbed Near Bridge

North 49' 32.590 latitude  
West 120' 31.336 longitude (see map 2)

We then proceeded back South back along Summer Creek Rd. towards the intersection of Highway 5 and Summer Creek Road.

We parked our vehicle and then climbed up a forestry road to 1700 metres above sea level.

We sampled 3 rock samples

Sample #4: (white-green) Up Forestry Road @ 1500 ft

North 49' 32.590 latitude

West 120' 31.336 longitude (see map)

Sample #5: (white-green) Up Forestry Road @ 1623 ft

North 49' 32.590 latitude

West 120' 31.336 longitude (see map)

Sample #6: (white-green) Up Forestry Road @ 1500 ft

4.0 EXPENSES CASH CLAIMS 18 - 25 July 4 -5 2009

4.0a Exploration expenses Cash 18 and cash 25 Claims

Similkameen Mining Division

July 3, 2009 through July 6, 2009

Vehicle rental and fuel	\$260.00
Meals	\$351.89
Lodging	\$235.00
Supplies	\$315.46
Total	\$1,162.35

**4.b Employees expenses on the Cash 18 and Cash 25 Claims,  
Similkameen Mining Division July 04-06, 2009**

<b>Princeton, BC trip to the Cash Claims July 04 - 06, 2009</b>		
<b>July 04, 2009</b>	Picked up Rental vehicle in Burnaby, BC and drove to th Cash 18 and Cash 25 claims north of Princeton, BC	
<b>July 04, 2009</b>	Prospecting work on Cash 18 and Cash 25 Cliams, Sample grab bags	
	Michael R. Lee	350.00
	Gary Tucker	350.00
	Brian Wallace	350.00
<b>July 05, 2009</b>	Prospecting work on Cash 18 and Cash 25 Cliams, Sample grab bags, drove forestry roads to stake out future work sites	
	Michael R. Lee	350.00
	Gary Tucker	350.00
	Brian Wallace	350.00
<b>July 05, 2009</b>	Drove from Princeton, BC to Burnaby, BC	
<b>July 06, 2009</b>	Delivered samples to labratories and then return Rental Vehicle	
	Michael R. Lee	350.00
<b>TOTAL EXP.</b>		2450.00

**4.0c Other expenses on the Cash 18 and Cash 25 Claims, Similkameen Mining Division**

LABRATORY EXPENSES			
DATE	LABORATORY	COSTS	GST
JULY 13, 2009	Earth and Ocean Sciences, UBC	400.00	
JULY 24, 2009	ALS Chemex	95.87	4.79
TOTAL		495.87	4.79

**Expenses for writing Report Aug 12, 2009**

Writing and formating Statement of Work report for Michael R. Lee:  
 Aug, 2009  
 \$400.00

Total other expenses 895.87

**TOTAL EXPENSES FOR PRINCETON TRIP JULY 2009**

1) Exploration expenses on the Cash 18 and Cash 25 Claims.....1162.35  
 2) Emplpyees expenses on the Cash 18 and Cash 25 Claims.....2450.00  
 3) Other expenses on the Cash 18 and Cash 25 Claims.....895.87  
**TOTAL EXPENSES.....4508.12**

## APPENDIX 1



# ALS Chemex

EXCELLENCE IN ANALYTICAL CHEMISTRY

ALS Canada Ltd.

212 Brooksbank Avenue  
North Vancouver BC V7J 2C1

Phone: 604 984 0221 Fax: 604 984 0218 www.alschemex.com

To: LEE, MIKE  
60562 GRANVILLE PARK  
VANCOUVER BC V6H 4B9

Page: 1  
Finalized Date: 24-JUL-2009  
This copy reported on 31-JUL-2009  
Account: LEEMIK

## CERTIFICATE VA09068942

Project:  
P.O. No.:

This report is for 2 Rock samples submitted to our lab in Vancouver, BC, Canada on 8-JUL-2009.

The following have access to data associated with this certificate:

MIKE LEE		
----------	--	--

## SAMPLE PREPARATION

ALS CODE	DESCRIPTION
WEI-21	Received Sample Weight
LOG-22	Sample login - Rcd w/o BarCode
CRU-31	Fine crushing - 70% <2mm
PUL-31	Pulverize split to 85% <75 um

## ANALYTICAL PROCEDURES

ALS CODE	DESCRIPTION
ME-MS61	48 element four acid ICP-MS

To: LEE, MIKE  
60562 GRANVILLE PARK  
VANCOUVER BC V6H 4B9

This is the Final Report and supersedes any preliminary report with this certificate number. Results apply to samples as submitted. All pages of this report have been checked and approved for release.

Signature:   
Colin Ramshaw, Vancouver Laboratory Manager



# ALS Chemex

EXCELLENCE IN ANALYTICAL CHEMISTRY

ALS Canada Ltd.

212 Brooksbank Avenue

North Vancouver BC V7J 2C1

Phone: 604 984 0221 Fax: 604 984 0218 www.alschemex.com

To: LEE, MIKE

60562 GRANVILLE PARK

VANCOUVER BC V6H 4B9

Page: 2 - B

Total # Pages: 2 (A - D)

Plus Appendix Pages

Finalized Date: 24-JUL-2009

Account: LEEMIK

## CERTIFICATE OF ANALYSIS VA09068942

Sample Description	Method Analyte Units LOR	ME-MS61	ME-MS61	ME-MS61	ME-MS61	ME-MS61	ME-MS61	ME-MS61	ME-MS61	ME-MS61	ME-MS61	ME-MS61	ME-MS61	ME-MS61	ME-MS61	ME-MS61	
		Ga	Ge	Hf	In	K	La	Li	Mg	Mn	Mo	Na	Nb	Ni	P	Pb	
		ppm	ppm	ppm	ppm	%	ppm	ppm	%	ppm	ppm	%	ppm	ppm	ppm	ppm	ppm
		0.05	0.05	0.1	0.005	0.01	0.5	0.2	0.01	5	0.05	0.01	0.1	0.2	10	0.5	
Lighter #1		24.5	0.20	1.2	0.043	3.10	58.3	15.7	0.33	137	0.50	2.24	11.5	4.5	380	29.4	
Darker #2		21.6	0.18	4.3	0.053	4.47	45.9	7.3	0.29	96	11.20	2.05	41.3	5.2	2260	87.4	



# ALS Chemex

**EXCELLENCE IN ANALYTICAL CHEMISTRY**

ALS Canada Ltd.

212 Brooksbank Avenue  
North Vancouver BC V7J 2C1

Phone: 604 984 0221 Fax: 604 984 0218 www.alschemex.com

To: LEE, MIKE  
60562 GRANVILLE PARK  
VANCOUVER BC V6H 4B9

Page: 2 - C  
Total # Pages: 2 (A - D)  
Plus Appendix Pages  
Finalized Date: 24-JUL-2009  
Account: LEEMIK

## CERTIFICATE OF ANALYSIS VA09068942

Sample Description	Method Analyte Units LOL	ME-MS61	ME-MS61	ME-MS61	ME-MS61	ME-MS61	ME-MS61	ME-MS61	ME-MS61	ME-MS61	ME-MS61	ME-MS61	ME-MS61	ME-MS61	ME-MS61	
		Rb	Re	S	Sb	Sc	Se	Sn	Sr	Ta	Te	Tb	Tl	Ti	U	V
		ppm	ppm	%	ppm	ppm	ppm	ppm	ppm	ppm	ppm	ppm	%	ppm	ppm	ppm
		0.1	0.002	0.01	0.05	0.1	1	0.2	0.2	0.05	0.05	0.2	0.005	0.02	0.1	1
Lighter #1		95.0	<0.002	<0.01	0.31	2.8	2	1.2	1370	0.70	<0.05	12.9	0.164	0.51	1.8	25
Darker #2		186.5	0.004	0.14	6.00	9.9	2	1.4	2130	2.08	<0.05	14.8	0.492	0.99	3.8	49

\*\*\*\* See Appendix Page for comments regarding this certificate \*\*\*\*



# ALS Chemex

EXCELLENCE IN ANALYTICAL CHEMISTRY

ALS Canada Ltd.

212 Brooksbank Avenue  
North Vancouver BC V7J 2C1

Phone: 604 984 0221 Fax: 604 984 0218 www.alschemex.com

To: LEE, MIKE  
60562 GRANVILLE PARK  
VANCOUVER BC V6H 4B9

Page: 2 - D  
Total # Pages: 2 (A - D)  
Plus Appendix Pages  
Finalized Date: 24-JUL-2009  
Account: LEEMIK

## CERTIFICATE OF ANALYSIS VA09068942

Sample Description	Method Analyte Units LOR	ME-MS61	ME-MS61	ME-MS61	ME-MS61
		W	Y	Zn	Zr
		ppm	ppm	ppm	ppm
		0.1	0.1	2	0.5
Lighter #1		0.6	6.6	62	32.8
Darker #2		8.6	14.1	258	160.5

\*\*\*\*\* See Appendix Page for comments regarding this certificate \*\*\*\*\*



# ALS Chemex

**EXCELLENCE IN ANALYTICAL CHEMISTRY**

ALS Canada Ltd.

212 Brooksbank Avenue  
North Vancouver BC V7J 2C1

Phone: 604 984 0221 Fax: 604 984 0218 [www.alschemex.com](http://www.alschemex.com)

To: LEE, MIKE  
60562 GRANVILLE PARK  
VANCOUVER BC V6H 4B9

Page: Appendix 1  
Total # Appendix Pages: 1  
Finalized Date: 24-JUL-2009  
Account: LEEMIK

**CERTIFICATE OF ANALYSIS VA09068942**

<b>Method</b>	<b>CERTIFICATE COMMENTS</b>
ME-MS61	REE's may not be totally soluble in this method.

**APPENDIX 2**

**QUANTITATIVE PHASE ANALYSIS OF TWO POWDER SAMPLES USING THE RIETVELD METHOD AND X-RAY POWDER DIFFRACTION DATA.**

**(Project: Zeolites)**

---

**Michael R. Lee  
60562 Granville Park  
Vancouver, B.C. V6H 4B9**

---

---

**Mati Raudsepp, Ph.D.  
Elisabetta Pani, Ph.D.  
Jenny Lai, B.Sc.**

---

**Dept. of Earth & Ocean Sciences  
6339 Stores Road  
The University of British Columbia  
Vancouver, BC V6T 1Z4**

**July 15, 2009**

## EXPERIMENTAL METHOD

The two samples “Grey” and “White” were reduced into fine powder to the optimum grain-size range for X-ray analysis ( $<10\mu\text{m}$ ) grinding under ethanol in a vibratory McCrone Micronising Mill for 7 minutes. Step-scan X-ray powder-diffraction data were collected over a range  $3-80^{\circ}2\theta$  with  $\text{CoK}\alpha$  radiation on a standard Siemens (Bruker) D5000 Bragg-Brentano diffractometer equipped with an Fe monochromator foil, 0.6 mm ( $0.3^{\circ}$ ) divergence slit, incident- and diffracted-beam Soller slits and a Vantec-1 strip detector. The long fine-focus Co X-ray tube was operated at 35 kV and 40 mA, using a take-off angle of  $6^{\circ}$ .

## RESULTS AND DISCUSSION

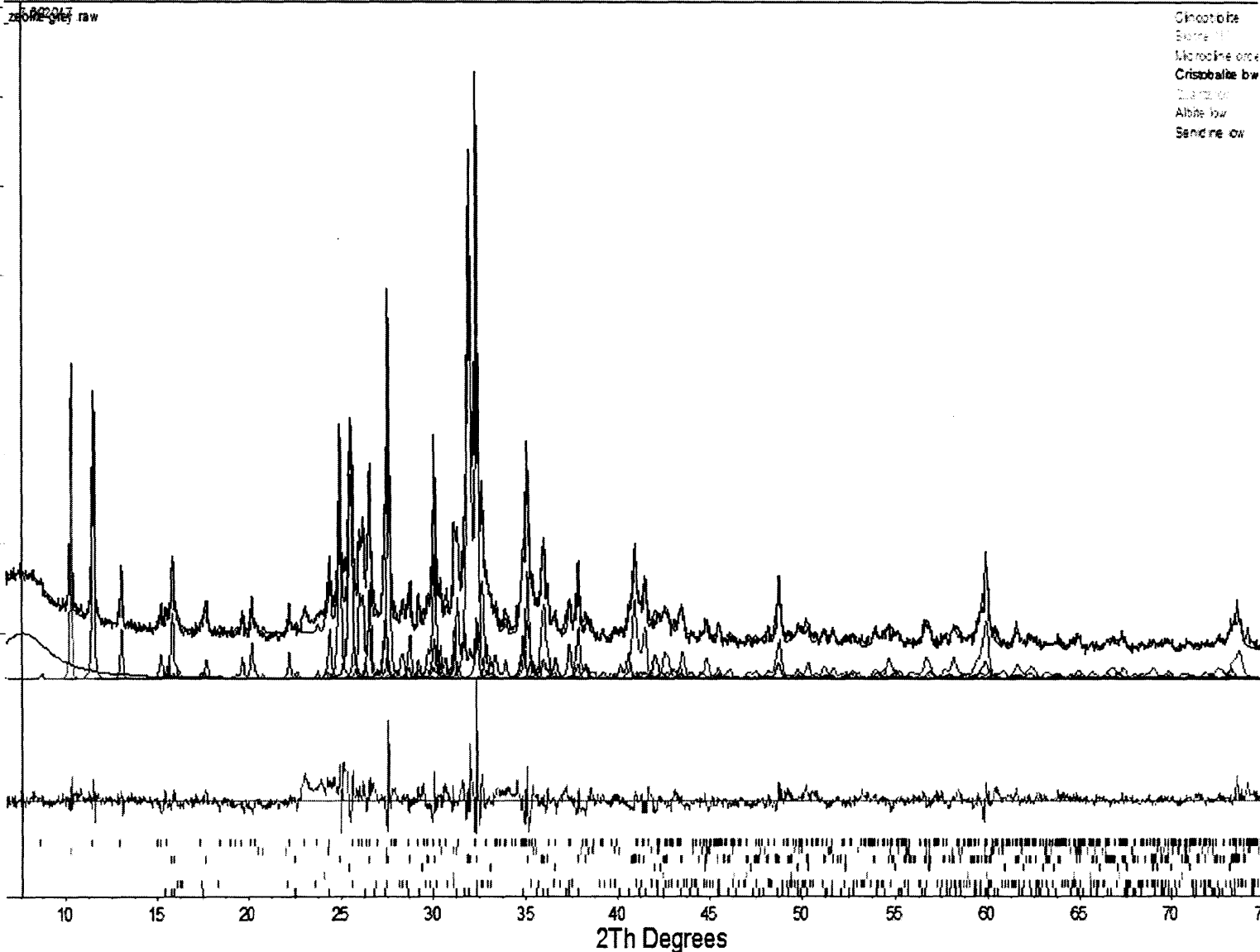
The X-ray diffractograms were analyzed using the International Centre for Diffraction Database PDF-4 using Search-Match software by Siemens (Bruker). X-ray powder-diffraction data were refined with Rietveld program Topas 3 (Bruker AXS).

The results of quantitative phase analysis by Rietveld refinement are given in Table 1. These amounts represent the relative amounts of crystalline phases normalized to 100%. The Rietveld refinement plots for the samples are shown in Figures 1-2.

Note that the broad calculated peak between 5 and  $9^{\circ}2\theta$  in Figures 1 and 2 is used to better fit the pattern and show the presence of an unknown clay (mixed layer smectite-chlorite?) that is not considered in the results. Therefore the results should be considered approximate

Table 1. Results of quantitative phase analysis (wt.%) – Approximate results

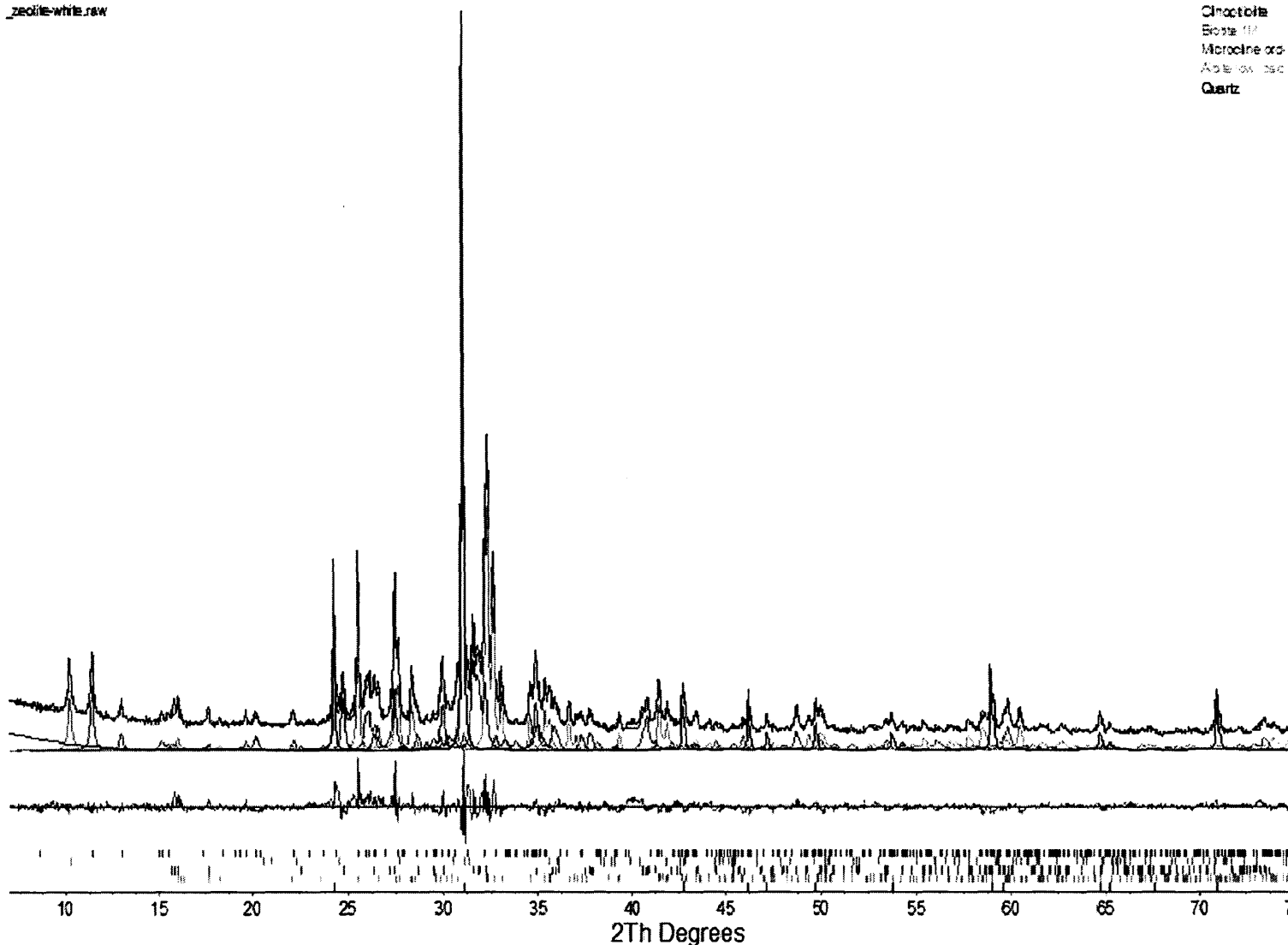
Mineral	Ideal formula	“Grey”	“White”
Quartz	$\text{SiO}_2$	1	20
Cristobalite	$\text{SiO}_2$	7	
Biotite	$\text{K}(\text{Mg},\text{Fe}^{2+})_3\text{AlSi}_3\text{O}_{10}(\text{OH})_2$	3	2
K-feldspar	$\text{KAlSi}_3\text{O}_8$	61	25
Plagioclase	$\text{NaAlSi}_3\text{O}_8 - \text{CaAl}_2\text{Si}_2\text{O}_8$	10	39
Clinoptilolite	$(\text{Ca}0.5,\text{Na},\text{K})_6[\text{Al}6\text{Si}30\text{O}72]\cdot\sim 20\text{H}_2\text{O}$	18	14
Total		100	100



**Figure 1.** Rietveld refinement plot of sample “Grey” (blue line - observed intensity at each step; red line - calculated pattern; solid grey line below – difference between observed and calculated intensities; vertical bars, positions of all Bragg reflections). Coloured lines are individual diffraction patterns of all phases.

zeolite-white.raw

Clinoptilolite  
Beta  
Microcline ord  
Albite  
Quartz



**Figure 2.** Rietveld refinement plot of sample "White" (blue line - observed intensity at each step; red line - calculated pattern; solid grey line below - difference between observed and calculated intensities; vertical bars, positions of all Bragg reflections). Coloured lines are individual diffraction patterns of all phases.

**From:** Les Lavkulich <lml@interchange.ubc.ca>

**To:** MIKE LEE <michaelrlee@shaw.ca>

**Date:** Wednesday, August 26, 2009 9:07 AM

**Subject:**

To: Mr. M. Lee

From: L.M.(Les)Lavkulich

Re: Retesting Zeolites

I received the two samples and will call them Grey and White as before. The samples were intact and hard. I crushed a portion of each sample and then ground the sample to pass a 1mm.sieve. I took a sub-sample of each of the Grey and White and placed them into a pre-heated furnace at 300°C for 11/2 hours, cooled them in a desiccators and calculated weight loss; I then placed them in the furnace for 11/2 hours at 500°C and calculated weight loss again.

Both the original samples, after grinding and after heating to 300°C were tested for Cation Exchange Capacity by the same procedure as reported on August 7, 2009 ( Hendershot & Lalonde, 1993 and Rhoades, 1982) – NH<sub>4</sub>-acetate/ KCl.

Subsamples of both the original and 300°C heated samples were delivered to Earth& Ocean Sciences for X-Ray analyses.

**Weight Loss**

From 100° C to 300°C; From 300°C -500°C

Grey < 1% ; White 4.8% Both ~ 1%

Possibly heating for longer period would increase weight loss!

**Cation Exchange Capacity (cmol(+)/kg or me/100gm)**

Grey 1 45 White 1 26

Grey 2 38 White 2 25

Mean **41** Mean **26**

Grey 1 + 300°C 23 White 1 + 3000C 19

Grey 2 + 3000C 26 White 2 + 3000C 15

Mean **24** Mean **18**

Not as you expected but consistent with my understanding the CEC decreased upon heating.

Two observations:

1. when grinding the samples, the grey was more coherent; while the white was easier to crush, and
2. the grey sample dispersed (more fines) in solution more than the white.

Trust this helps,

L.M.(Les)Lavkulich

**From:** Les Lavkulich [mailto:lml@interchange.ubc.ca]

**Sent:** Friday, August 07, 2009 12:34 PM

**To:** michaellee@shaw.ca; pamrichg@shawbiz.ca

**Cc:** les M Lavkulich

**Subject:** zeolite samples (2)

I'm Sorry for the erroneous values I forwarded earlier. After my chat with Liz (thank you Mr. Lee), I had my lab re-check the calculations. The numbers they provided were analysis numbers and not CEC in milliequivalents. Liz and others are more familiar with results being expressed on a per gram basis. To do so, merely divide the values in red by 100. Please pass on this to Liz, with my thanks!

I apologize for my lab. We would have caught this error later this afternoon at our regular lab meeting.

CORRECTED AUGUST 7, 2009- LML

**Attachments:** XRD-Rietveld results for zeolite samples (120 KB)

Hello Mr. Lee,

I just returned from a trip and have the results of the Cation Exchange Capacity results.

I received the two samples from Elizabetta Pani, Earth and Ocean Sciences. They were identified as "Grey" and "White".

We ground the samples in a mortar and pestle to pass a 2mm sieve, mixed the sample as thoroughly as possible and divided the sample into two fractions of about 25 grams each.

One fraction of each Grey and White was placed in a crucible and heated to 500°C for 8 hours. This was labeled respectively, **Grey+H** and **White+H**. Samples were cooled to room temperature for further analysis.

Cation exchange capacity was determined by the Ammonium acetate/potassium chloride procedure. Analysis was conducted in duplicate. Results were:

<b>Sample</b>	<b>CEC</b>	<b>Corrected</b>
	{ me/100g or cmol(+)/kg }	
Grey 1*	<del>194</del>	32.2
Grey 2	<del>189</del>	39.1
Grey+H 1	93	22.3
Grey+H 2	98	22.8
White 1	<del>258</del>	25.0
White 2	<del>254</del>	24.3
White+H 1	<del>154</del>	12.0
White+H 2	<del>152</del>	12.7

\*1&2 are duplicate analysis

References:

Hendershot, W.H., Lalonde, H. and Duquette, M. 1993. Ion Exchange and exchangeable cations. *In* M.R. Carter Ed. Soil Sampling & Methods of Soil Analysis. Lewis Publ. Boca Raton. pp. 167-173.

Rhoades. J.D. 1982. Cation Exchange Capacity. *In* A.L. Page et al. Eds. Methods of Soil Analysis. Agron. 9. Amer. Soc. Agron. Madison, WI. pp. 159-165.

**From:** Richard Gunter <pamrichg@shawbiz.ca>

**Date:** Wednesday, August 26, 2009 9:24 AM

**To:** MIKE LEE <michaelrlee@shaw.ca>

**Subject:** Re: Retesting of zeolite

Hi Mike:

It looks like the results of the heating give less CEC. I do not know why this lesser heating should give similar CEC results but there is something in the crystal structure of the zeolite at this particular location that is sensitive to heat.

At this point the heating results are not a critical parameter, as a program is needed to outline a zeolite resource first. The CEC results of the non-heated sample were high enough to be within specifications if a commercial volume of zeolite can be found.

Talk to you later.

Richard Gunter

Hello Mr. Lee,

I just returned from a trip and have the results of the Cation Exchange Capacity results.

I received the two samples from Elizabetta Pani, Earth and Ocean Sciences. They were identified as "Grey" and "White".

We ground the samples in a mortar and pestle to pass a 2mm sieve, mixed the sample as thoroughly as possible and divided the sample into two fractions of about 25 grams each.

One fraction of each Grey and White was placed in a crucible and heated to 500°C for 8 hours. This was labeled respectively, **Grey+H** and **White+H**. Samples were cooled to room temperature for further analysis.

Cation exchange capacity was determined by the Ammonium acetate/potassium chloride procedure. Analysis was conducted in duplicate. Results were:

Sample	CEC { me/100g or cmol(+)/kg }
Grey 1	194
Grey 2	189
Grey+H 1	93
Grey+H 2	98
White 1	258
White 2	254
White+H 1	154
White+H 2	152

References:

Hendershot, W.H., Lalonde, H. and Duquette, M. 1993. Ion Exchange and exchangeable cations. *In* M.R. Carter Ed. Soil Sampling & Methods of Soil Analysis. Lewis Publ. Boca Raton. pp. 167-173.

Rhoades. J.D. 1982. Cation Exchange Capacity. *In* A.L. Page et al. Eds. Methods of Soil Analysis. Agron. 9. Amer. Soc. Agron. Madison, WI. pp. 159-165.

**From:** Les Lavkulich [mailto:lm1@interchange.ubc.ca]  
**Sent:** Friday, August 07, 2009 12:34 PM  
**To:** michaelrlee@shaw.ca; pamrichg@shawbiz.ca  
**Cc:** les M Lavkulich  
**Subject:** zeolite samples (2)

I'm Sorry for the erroneous values I forwarded earlier. After my chat with Liz (thank you Mr. Lee), I had my lab re-check the calculations. The numbers they provided were analysis numbers and not CEC in milliequivalents. Liz and others are more familiar with results being expressed on a per gram basis. To do so, merely divide the values in red by 100. Please pass on this to Liz, with my thanks!

I apologize for my lab. We would have caught this error later this afternoon at our regular lab meeting.

**STATEMENT OF QUALIFICATIONS  
MICHAEL R. LEE**

I attended Niagra College, Ontario and graduated as a Survey Technician in 1985.

Certified as an Engineer Technician/Civil in 1988.

A member of Applied Science Technologists and Technicians of BC as a CTech.

August 12, 2009



---

Michael R. Lee

## **References:**

Read: Peter B. (1986): Industrial Minerals in Some Tertiary basins, Southern British Columbia BC Ministry of Energy, Mines and Petroleum Resources. P - 1987 - 1

Read: Peter B. (1987): Tertiary Stratigraphy and Industrial Minerals. Princeton and Tulameen Basins. Southern British Columbia BC Ministry of Energy, Mines and Petroleum Resources O.F. 1987 - 19

T.L. Sadler-Brown A Report on Preliminary Evaluation of the Zeolite Occurrences on the CASH Claims, Dec 8, 1995