

**BC Geological Survey  
Assessment Report  
31148**

**SAMPLING OF ENTERPRISE 5 LEVEL DUMP  
ENTERPRISE CLAIM GROUP  
ENTERPRISE CREEK  
SLOCAN MINING DIVISION  
SILVERTON, B.C.  
NTS 82F/14W  
LATITUDE 49°48'N LONGITUDE 117° 20'W**

**GEOLOGICAL SURVEY BRANCH  
ASSESSMENT REPORT  
31148**

**LOCKE B. GOLDSMITH, P.Eng., P.Geo.**

**CONSULTING GEOLOGIST**

**Owner, Operator**

**OCTOBER 3, 2009**

**Event # 4370154**

**RECEIVED**  
OCT 13 2009  
Gold Commissioner's Office  
VANCOUVER, B.C.

## TABLE OF CONTENTS

SUMMARY .....	1
INTRODUCTION .....	2
LOCATION MAP, Fig 1 .....	3
CLAIM MAP, Fig 2 .....	4
GEOLOGY .....	5
SAMPLING PROGRAM .....	5
CONCLUSIONS .....	5
RECOMMENDATIONS .....	5
COST ESTIMATE .....	6
ENGINEER'S CERTIFICATE .....	7
REFERENCES .....	8
COST STATEMENT, 2009 PROGRAM .....	9

### APPENDIX: GEOCHEMICAL ANALYTICAL PROCEDURES

GEOCHEMICAL ANALYSES

STATEMENT OF WORK

MAPS .....

*(Pocket inside back cover)*

5, 7, & 8 LEVEL DUMPS, Scale 1:500, Fig 3

**SAMPLING OF ENTERPRISE 5 LEVEL DUMP  
ENTERPRISE CLAIM GROUP  
ENTERPRISE CREEK  
SLOCAN MINING DIVISION  
SILVERTON, B.C.**

**SUMMARY**

Previous sampling of mine dumps documented a consistent silver-lead-zinc content in the  $-\frac{1}{2}$ " fraction. Sphalerite mineralization was observed frequently in a coarser size fraction.

A barrier of boulders placed on the Enterprise Creek road by the Highways Department limited access to walking 4.5 km each way and thus restricted the transport of samples.

A selected sample of  $+\frac{1}{2}$ " -3" rock that contained visible sphalerite mineralization was collected from a previously sampled portion of the 5 Level dump. Metal content of 9.2 oz/mt Ag, 1.01% Pb, and 2.94% Zn is comparable to the range of values obtained from sampling of the  $-\frac{1}{2}$ " material.

The available quantity of mineralization may include material coarser than  $\frac{1}{2}$ ". Results suggest that sorting to retain -3" rock and trucking to an existing mill nearby may be profitable at present metal prices.

A budget of \$25,000 should be available for a sampling program of on-site screening to recover -3" and smaller fractions, weighing, and assaying to investigate the possibility that a sized product could provide economic mill feed. Volume of the dumps should be estimated as part of the evaluation.

## INTRODUCTION

The Enterprise claim group is located approximately 14.5 km south of Silverton, B.C., in the Slocan Mining Division. Access is from Highway 6 via 7.5 km of gravel road in the Enterprise Creek valley. The claims straddle Enterprise Creek. Elevation ranges between 1210 metres along the creek to 1770 metres on the steep southern slopes.

The Enterprise Creek road is gazetted for public use and should be maintained. Management of the Highways Department has placed a barrier of large boulders at 5 km from Highway 6 and refused to remove the blockage, claiming potential risk to users. The road is in good condition beyond the obstruction as far as and past the vicinity of the Enterprise Mine. Access was limited to walking 4.5 km each way, thus restricting the transport of samples.

The group is comprised of 10 reverted Crown Grants as listed below.

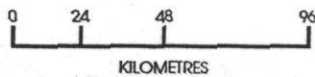
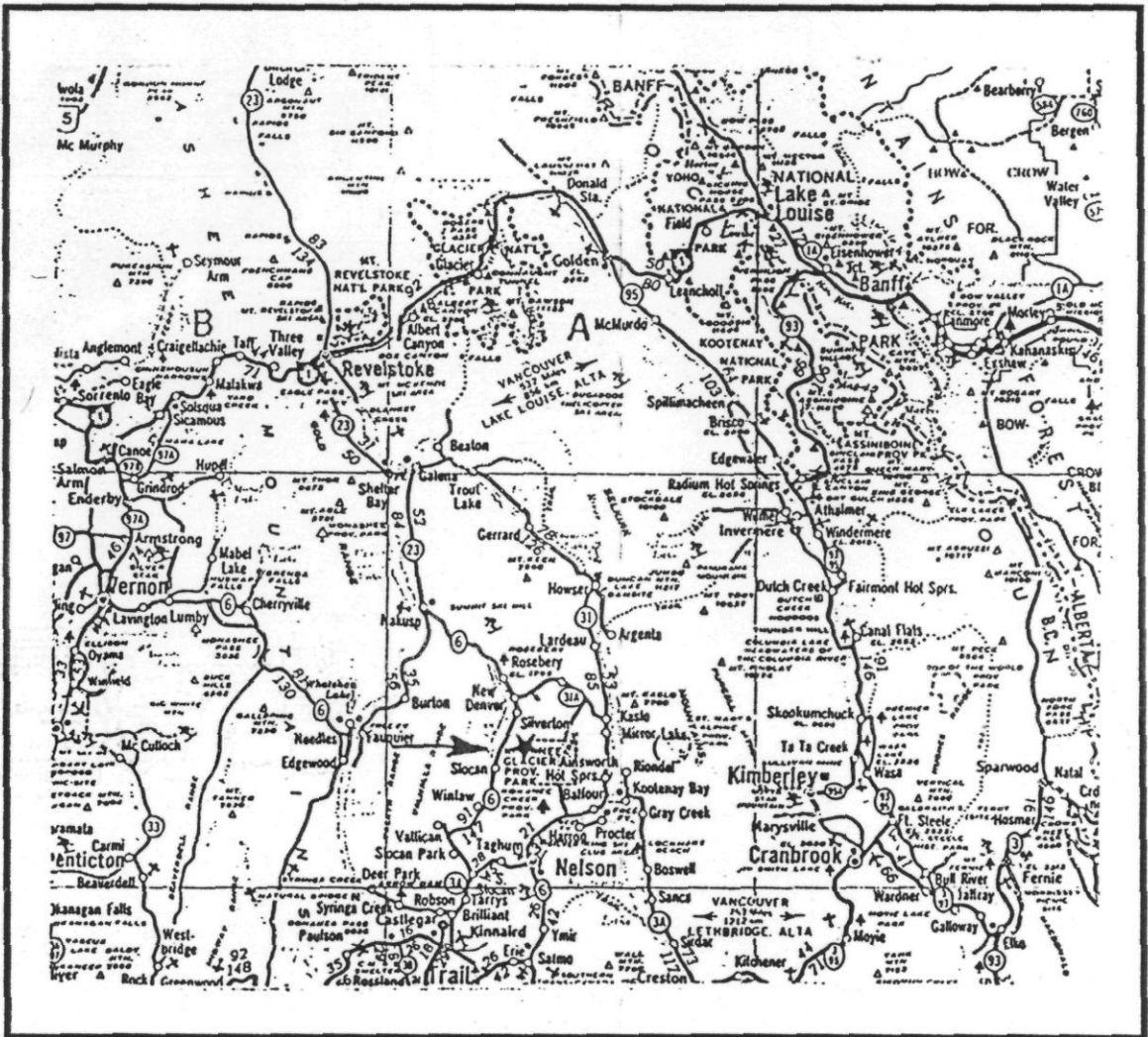
<i>Name</i>	<i>Former Lot Number</i>	<i>Record Number</i>	<i>Issue Date</i>	<i>Good To Date</i>
Slocan Queen	1015	255550	Nov 8, 1978	Nov 12, 2012
Empress Fr	8400	255551	Nov 8, 1978	Nov 12, 2011
London Fr	5664	255552	Nov 8, 1978	Nov 12, 2011
United Empire	2103	255553	Nov 8, 1978	Nov 12, 2011
Sunset Fr	14541	255554	Nov 8, 1978	Nov 12, 2011
Enterprise Fr	4522	255562	Nov 8, 1978	Nov 12, 2011
Enterprise	1014	255685	Nov 9, 1979	Nov 12, 2011
Rainbow Fr	14543	255812	Nov 10,1980	Nov 12, 2011
Montezuma	5403	255813	Nov 10,1980	Nov 12, 2011
Iron Horse # 2	5663	256182	Nov 12,1985	Nov 12, 2012

Reports listed on the References page include regional and local geology, past history and production figures, soil geochemistry, diamond drilling, and sampling of mine dumps.

Preliminary sampling of mine dumps during 2000 and 2003 documented a consistent silver-lead-zinc content of 2.5-5.5 oz/t Ag, 0.5-1.0% Pb, and 1.5-2.5% Zn in the -½" fraction. Sphalerite mineralization was observed frequently in a 1" to 3" size fraction.

# Enterprise Claim Group

SILVERTON AREA, B.C. SLOCAN MINING DIVISION 82 F/14 W

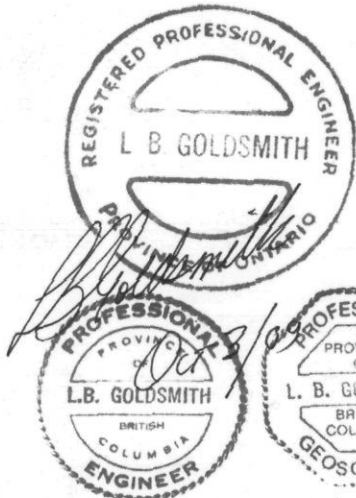


## LOCATION MAP

To accompany report by  
Locke B. Goldsmith, P.Eng., P.Geo.  
Consulting Geologist

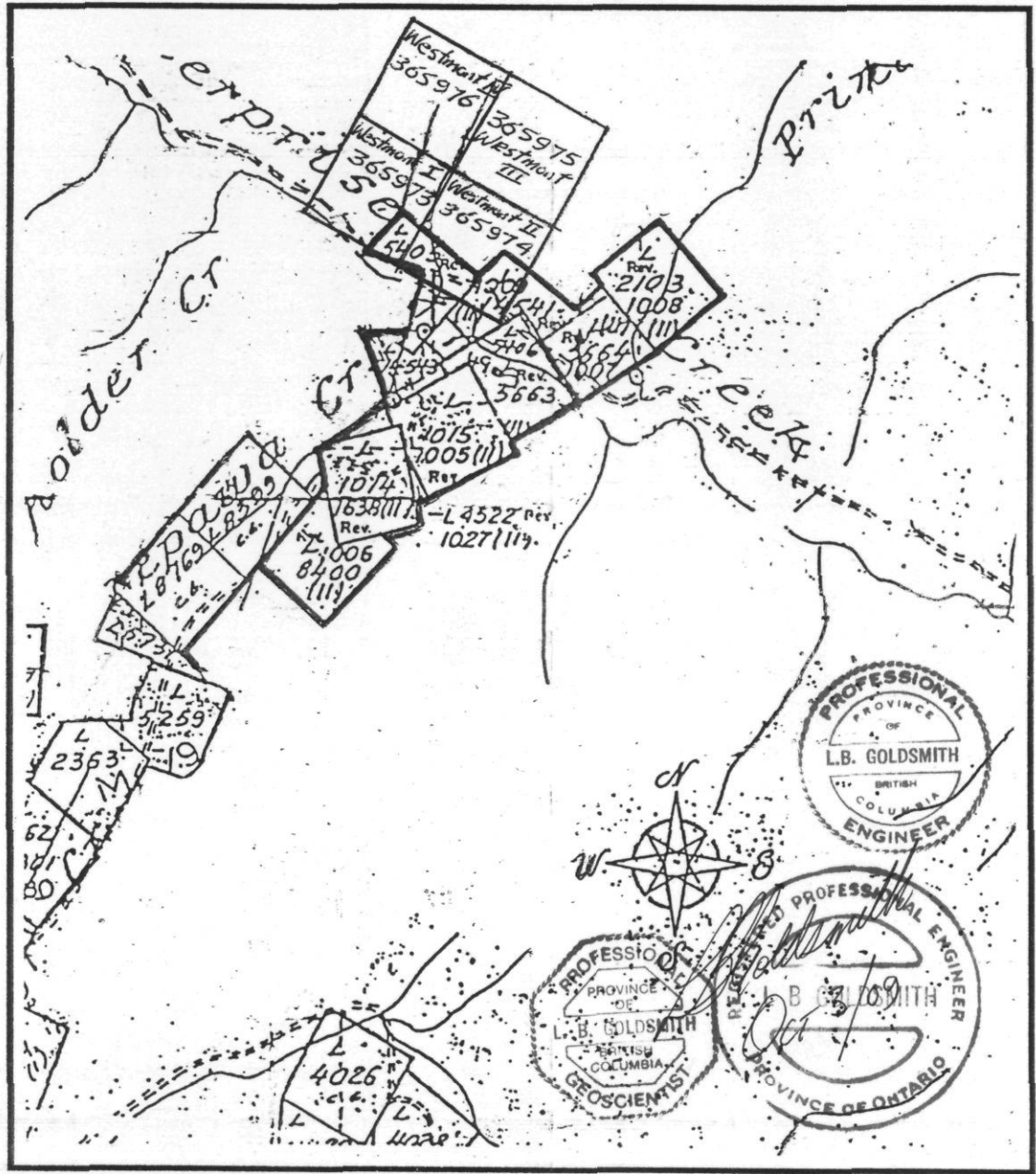
### Arctex Engineering Services

OCTOBER 2009



# Enterprise Claim Group

SILVERTON AREA, B.C. SLOCAN MINING DIVISION 82 F/14 W



## CLAIM MAP

To accompany report by  
LOCKE B. GOLDSMITH, P.ENG., P.GEO., Consulting Geologist

Arctex Engineering Services

OCTOBER 2009

## **GEOLOGY**

The map area (Fig 3) is on a north-facing moderately steep slope. Rock exposures are generally confined to incised creeks and road cuts. Unaltered granodiorite porphyry of the Nelson batholith is the most abundant rock type exposed on the property. Biotite and hornblende are fresh and feldspar crystals to 2 cm in diameter are distinct. Less common phases within the batholith include dark fine-grained diorite and non-porphyrific granodiorite. Pegmatitic and aplitic dykes bisect the batholith. Within 4 m of the footwall of the Enterprise vein, clearly visible near 5 Level portal, the granodiorite has been metamorphosed to a banded gneiss. Tight fold structures are also present.

The northeast trend of the Enterprise vein is shown by the 5, 7, and 8 Level portals.

## **SAMPLING PROGRAM**

A plan of sampling on a grid was postponed because access for transport of material was obstructed.

A selected composite sample of +1/2" -3" rock that contained visible but not massive sphalerite mineralization was collected from a previously sampled sector of the 5 Level dump. The area of sampling is outlined on Figure 3.

## **CONCLUSIONS**

Metal content of 9.2 oz/mt Ag (278 gm/mt), 1.01% Pb, and 2.94% Zn in the -3" size fraction is comparable to the range of values obtained from sampling of the -1/2" material.

The available quantity of mineralized rock may include material coarser than 1/2". Results suggest that trucking of a sorted size to an existing mill nearby may be profitable at present metal prices.

## **RECOMMENDATIONS**

The blockage on the Enterprise Creek road should be removed.

A sampling program of on-site screening to recover -3" and smaller fractions, weighing, and assaying to investigate the possibility that a sized product could provide economic mill feed is recommended. Volume of the dumps should be estimated as part of the evaluation.

**COST ESTIMATE**

A budget of \$30,000 should be available.

Respectfully submitted,

Locke B. Goldsmith, P.Eng., P.Geo.  
Consulting Geologist

Vancouver, B.C.

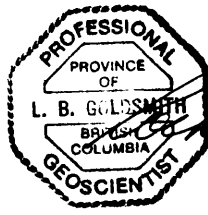
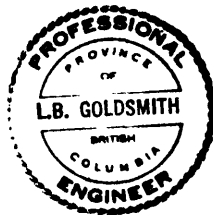
October 3, 2009



**ENGINEER'S AND GEOLOGIST'S CERTIFICATE  
LOCKE B. GOLDSMITH, P.GEO., P.ENG.**

1. I, Locke B. Goldsmith, am a Registered Professional Engineer in the Provinces of Ontario and British Columbia, and a Registered Professional Geologist in the Province of British Columbia and the States of Oregon, Minnesota, and Wisconsin. My address is 401-545 Clyde Ave., W. Vancouver, B.C. My occupation is that of Consulting Geologist.
2. I have a B.Sc.(Honours) degree in Geology from Michigan Technological University, a M.Sc. degree in Geology from the University of British Columbia, and have done postgraduate study at Michigan Technological University and the University of Nevada. I am a member of the Society of Economic Geologists and the AIME.
3. I have been engaged in mining exploration for the past 51 years.
4. I have written the report entitled "Sampling of Enterprise 5 Level Dump, Enterprise Claim Group, Enterprise Creek, Slocan Mining Division, Silverton, B.C", dated October 3, 2009. The report is based on field work and research performed by the author.
5. I own 100% of the property.

Respectfully submitted,



*Locke B. Goldsmith*



Locke B. Goldsmith, P.Eng., P.Geo.  
Consulting Geologist

Vancouver, B.C.  
October 3, 2009

**REFERENCES**

- Garrison, T.M., 1985. Thermal history of the Nelson batholith, B.C. Geol. Soc. Amer. Programs and Abstracts, Cord. Sect., p 360.
- Goldsmith, L.B., 1981. Report on the Enterprise Mine. Prepared for Monica Resources Ltd., with Addendum by D.W Tully, P.Eng.
- Goldsmith, L.B., 1982. Soil geochemistry, Enterprise Mine, Slocan Mining Division, Enterprise Creek, B.C. Private report, filed for assessment.
- Goldsmith, L.B., 2000. Sampling of Enterprise 5, 7, and 8 Level dumps, Enterprise claim group, Enterprise Creek, Slocan Mining Division, B.C. Private report, filed for assessment.
- Goldsmith, L.B., 2003. Sampling of Enterprise 5, 7, and 8 Level dumps, Enterprise claim group, Enterprise Creek, Slocan Mining Division, B.C. Private report, filed for assessment.
- Kallock, P.A. and Logan, J.M., 1986. Diamond drilling of No 2 Vein, Enterprise claim group, Enterprise Creek, Slocan Mining Division. Private report for Enterprise Resources Inc.
- Kallock, P.A., 1987. Diamond drilling of Enterprise and No 2 Veins, Enterprise claim group, Enterprise Creek, Slocan Mining Division, Silverton, B.C.. Private report for Enterprise Resources Inc.
- Little, H.W, 1960. Nelson map area, west half, B.C. Geol. Surv. Can.Mem. 308, 105 p.
- Parrish, R.R., 1984. Slocan Lake Fault: a low angle fault zone bounding the Valhalla Gneiss Complex, Nelson map area, southern British Columbia. In: Current Research, Part A, Geol.Surv. Can. Paper 84-1. pp. 323-330.
- Tully, D.W., 1981. Report on the Enterprise Mine. Private report for Monica Resources Ltd.
- Tully, D.W., 1984. Report on the Montezuma, Rainbow Fr., Slocan Queen, Empress Fr., London Fr., United Empire, Sunset Fr., Enterprise Fr., Enterprise, Lode, and Jess mineral claims. Private report for American Energy Corporation.
- Tully, D.W., 1985. Report on the Montezuma, Rainbow Fr., Slocan Queen, Empress Fr., London Fr., United Empire, Sunset Fr., Enterprise Fr., Enterprise, Lode, and Jess mineral claims. Private report for Enterprise Resources Inc.

**COST STATEMENT, 2009 PROGRAM****Personnel**

L.B. Goldsmith, ½ July 5, 6, total

1 ½ days @ \$924/day \$1,386.00

C. de Jong, ½ July 5, total

½ day @ \$236.25/day 118.13

1,504.13 \$1,504.13

**Food, Accommodation**

Total cost of 131.60 ÷ 1 man days 131.60

= \$131.60/man/day

**Transportation**

4x4 vehicle, ½ vehicle days @ \$134.40/day 67.20

**Analyses**

1 rock sample @ 21.89/sample 21.89

**Report**Drafting, word processing, photocopies, scans, prints 157.45

Total \$1,882.27

## **APPENDIX**



Acme Analytical Laboratories (Vancouver) Ltd.

1020 Cordova St. East Vancouver BC V6A 4A3 Canada  
Phone (604) 253-3158 Fax (604) 253-1716

www.acmelab.com

Submitted By: Locke Goldsmith  
Receiving Lab: Canada-Vancouver  
Received: July 20, 2009  
Report Date: July 28, 2009  
Page: 1 of 2

## CERTIFICATE OF ANALYSIS

VAN09003001.1

### CLIENT JOB INFORMATION

Project: Enterp  
Shipment ID:  
P.O. Number:  
Number of Samples: 1

### SAMPLE PREPARATION AND ANALYTICAL PROCEDURES

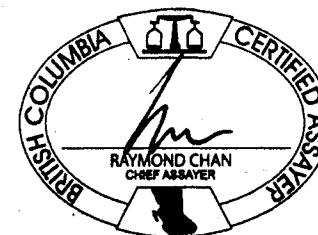
Method Code	Number of Samples	Code Description	Test Wgt (g)	Report Status	Lab
R200	1	Crush, split and pulverize rock to 200 mesh			VAN
7AR	1	1:1:1 Aqua Regia digestion ICP-ES analysis	1	Completed	VAN

### SAMPLE DISPOSAL

STOR-PLP Store After 90 days Invoice for Storage  
DISP-RJT Dispose of Reject After 90 days

### ADDITIONAL COMMENTS

Acme does not accept responsibility for samples left at the laboratory after 90 days without prior written instructions for sample storage or return.



This report supersedes all previous preliminary and final reports with this file number dated prior to the date on this certificate. Signature indicates final approval; preliminary reports are unsigned and should be used for reference only. All results are considered the confidential property of the client. Acme assumes the liabilities for actual cost of analysis only.  
\*\*\* asterisk indicates that an analytical result could not be provided due to unusually high levels of interference from other elements.



Acme Analytical Laboratories (Vancouver) Ltd.

1020 Cordova St. East Vancouver BC V6A 4A3 Canada  
Phone (604) 253-3158 Fax (604) 253-1716

www.acmelab.com

Project: Enterp  
Report Date: July 29, 2009

Page: 2 of 2 Part 1

# CERTIFICATE OF ANALYSIS

# VAN09003001.1

Method	WGHT	TAR	TAR	TAR	TAR	TAR	TAR	TAR	TAR	TAR	TAR	TAR	TAR	TAR	TAR	TAR	TAR	TAR	TAR	TAR
Analyte	Wgt	Mo	Cu	Pb	Zn	Ag	Ni	Co	Mn	Fe	As	Sr	Cd	Sb	Bi	Ca	P	Cr	Mg	Al
Unit	kg	%	%	%	%	gm/mt	%	%	%	%	%	%	%	%	%	%	%	%	%	%
MDL	0.01	0.001	0.001	0.01	0.01	2	0.001	0.001	0.01	0.01	0.01	0.001	0.001	0.001	0.01	0.01	0.001	0.001	0.01	0.01
ENT-001	Rock	<0.001	0.009	1.01	2.94	287	<0.001	<0.001	1.44	5.67	<0.01	0.001	0.022	0.004	<0.01	0.13	0.029	<0.001	0.12	0.20



Acme Analytical Laboratories (Vancouver) Ltd.

1020 Cordova St. East Vancouver BC V6A 4A3 Canada

Phone (604) 253-3158 Fax (604) 253-1716

[www.acmelab.com](http://www.acmelab.com)

Project: Enterp

Report Date: July 29, 2009

Page:

2 of 2

Part 2

## CERTIFICATE OF ANALYSIS

VAN09003001.1

Method	7AR	7AR	7AR	7AR	7AR	
Analyte	Na	K	W	Hg	S	
Unit	%	%	%	%	%	
MDL	0.01	0.01	0.001	0.001	0.05	
ENT-001	Rock	<0.01	0.22	0.005	<0.001	1.45



Acme Analytical Laboratories (Vancouver) Ltd.

1020 Cordova St. East Vancouver BC V6A 4A3 Canada  
Phone (604) 253-3158 Fax (604) 253-1716

www.acmelab.com

Project: Enterp  
Report Date: July 29, 2009

Page: 1 of 1 Part 1

QUALITY CONTROL REPORT

VAN09003001.1

Method	WGHT	7AR	7AR	7AR	7AR	7AR	7AR	7AR	7AR	7AR	7AR	7AR	7AR	7AR	7AR	7AR	7AR	7AR	7AR	7AR
Analyte	Wgt	Mo	Cu	Pb	Zn	Ag	Ni	Co	Mn	Fe	As	Sr	Cd	Sb	Bi	Ca	P	Cr	Mg	Al
Unit	kg	%	%	%	%	gm/mt	%	%	%	%	%	%	%	%	%	%	%	%	%	%
MDL	0.01	0.001	0.001	0.01	0.01	2	0.001	0.001	0.01	0.01	0.01	0.001	0.001	0.001	0.01	0.01	0.001	0.001	0.01	0.01
<b>Pulp Duplicates</b>																				
ENT-001	Rock	<0.001	0.009	1.01	2.94	287	<0.001	<0.001	1.44	5.67	<0.01	0.001	0.022	0.004	<0.01	0.13	0.029	<0.001	0.12	0.20
REP ENT-001	QC	<0.001	0.009	1.02	2.99	294	<0.001	<0.001	1.48	5.76	<0.01	0.001	0.022	0.005	<0.01	0.13	0.029	<0.001	0.12	0.20
<b>Reference Materials</b>																				
STD R4A	Standard	0.063	0.507	1.52	3.31	87	0.359	0.040	0.06	23.73	0.03	0.004	0.018	0.014	<0.01	0.98	0.044	0.013	0.87	1.29
STD R4A	Standard	0.064	0.514	1.53	3.33	88	0.364	0.040	0.06	23.96	0.02	0.004	0.018	0.016	<0.01	0.99	0.044	0.013	0.87	1.30
STD R4A Expected		0.062	0.502	1.5	3.31	86	0.334	0.04	0.06	23.38	0.023	0.004	0.017	0.0135	0.0024	0.94	0.042	0.012	0.83	1.25
BLK	Blank	<0.001	<0.001	<0.01	<0.01	<2	<0.001	<0.001	<0.01	<0.01	<0.01	<0.001	<0.001	<0.001	<0.01	<0.01	<0.001	<0.001	<0.01	<0.01
<b>Prep Wash</b>																				
G1	Prep Blank	<0.001	<0.001	<0.01	<0.01	<2	<0.001	<0.001	0.06	2.19	<0.01	0.007	<0.001	<0.001	<0.01	0.62	0.084	0.001	0.70	1.12

This report supersedes all previous preliminary and final reports with this file number dated prior to the date on this certificate. Signature indicates final approval; preliminary reports are unsigned and should be used for reference only.





Acme Analytical Laboratories (Vancouver) Ltd.

1020 Cordova St. East Vancouver BC V6A 4A3 Canada  
Phone (604) 253-3158 Fax (604) 253-1716

www.acmelab.com

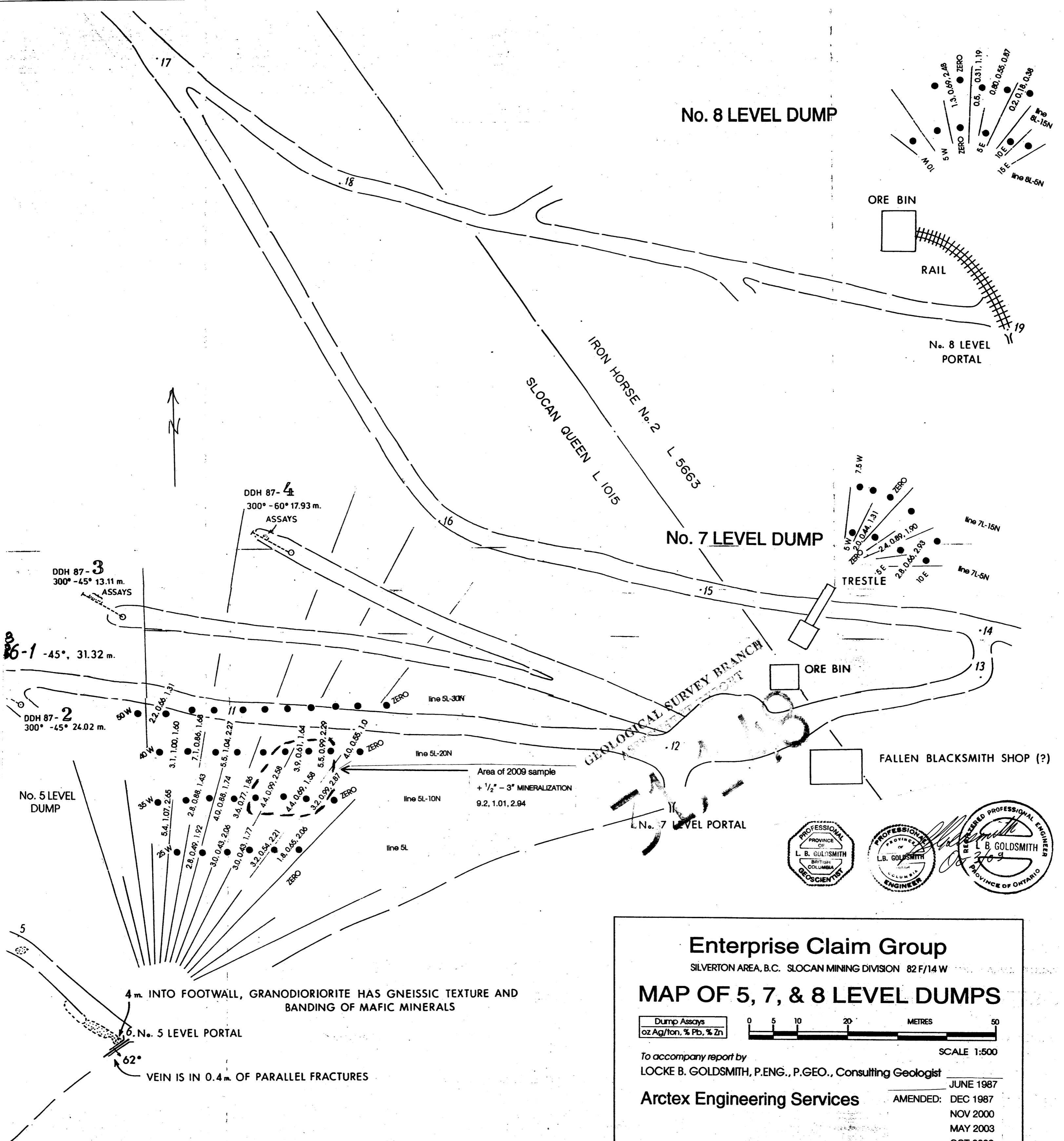
Project: Enterp  
Report Date: July 29, 2009

Page: 1 of 1 Part 2

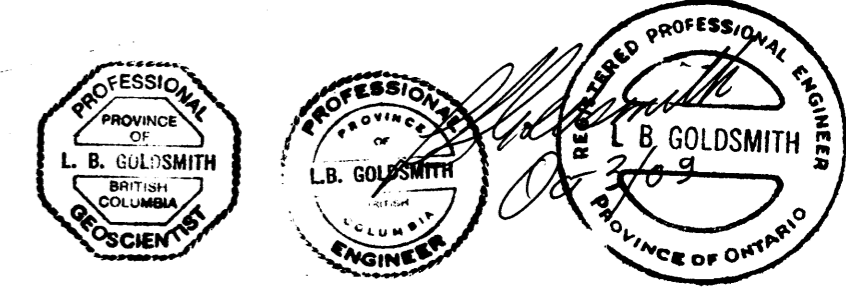
## QUALITY CONTROL REPORT

VAN09003001.1

Method		TAR	TAR	TAR	TAR	TAR
Analyte		Na	K	W	Hg	S
Unit		%	%	%	%	%
MDL		0.01	0.01	0.001	0.001	0.05
<b>Pulp Duplicates</b>						
ENT-001	Rock	<0.01	0.22	0.005	<0.001	1.45
REP ENT-001	QC	<0.01	0.22	0.003	<0.001	1.46
<b>Reference Materials</b>						
STD R4A	Standard	0.07	0.50	0.004	<0.001	16.15
STD R4A	Standard	0.07	0.50	<0.001	<0.001	16.39
STD R4A Expected		0.07	0.51	0.0011	0.001	16.7
BLK	Blank	<0.01	<0.01	<0.001	<0.001	<0.05
<b>Prep Wash</b>						
G1	Prep Blank	0.08	0.60	<0.001	<0.001	<0.05



GEOLOGICAL SURVEY BRANCH  
 MINING DIVISION



**Enterprise Claim Group**  
 SILVERTON AREA, B.C. SLOCAN MINING DIVISION 82 F/14 W

**MAP OF 5, 7, & 8 LEVEL DUMPS**

Dump Assays  
 oz Ag/ton, % Pb, % Zn

0 5 10 20 30 40 50 METRES

SCALE 1:500

To accompany report by  
 LOCKE B. GOLDSMITH, P.ENG., P.GEO., Consulting Geologist

**Arctex Engineering Services**

JUNE 1987  
 AMENDED: DEC 1987  
 NOV 2000  
 MAY 2003  
 OCT 2009

4 m. INTO FOOTWALL, GRANODIORITE HAS GNEISSIC TEXTURE AND BANDING OF MAFIC MINERALS

6. N. 5 LEVEL PORTAL

62°

VEIN IS IN 0.4 m. OF PARALLEL FRACTURES

Area of 2009 sample  
 + 1/2" - 3" MINERALIZATION  
 9.2, 1.01, 2.94