

**BC Geological Survey  
Assessment Report  
31218**

**2008 - 2009**

**PROSPECTING REPORT  
“Rusty Buck Property”**

**EVENT # 4309536      TENURE # 540018**

**Tenure Name: GPEX CLIII Rusty Buck**

**Mission Ridge Region  
Lillooet Mining Division  
Map 092J**

**Central Coordinate Reference  
Long. 122° 13' 13" W – Lat. 50° 45' 30" N**

**Report Date – December 5, 2009**

**Tenure Owner - William Larry Amey  
FMC 145191**

## INDEX

Page	i.....	Copy of Tenure Renewal
	1.....	Cover Page
	2.....	Index
	3.....	Introduction / Location / Access
	4.....	Regional Geology / Summary / Conclusion
	5.....	Work Evaluation & Cost Statement / Attending Parties & Qualifications / Affidavit
	6.....	General Location Reference Map - Map 1
	7.....	Work Area Map - Map 2
	8.....	Contour Map - Map 3

**Note: Unless otherwise referenced, map submissions are enhanced excerpts from the BC Ministry's Provincial Mapping System. Scale as that shown.**

## **Introduction**

The Rusty Buck property, tenure # 540018, an eleven cell tenure, comprising 224.88 hectares, was staked during August 2006, to conduct explorations in follow-up to reports of gold and silver occurrences by earlier operators. In September 2007, the current operator collected a number of specimens, some of which comprised copper and galena mineralization, with the possibility of chromium, and one sample which, under magnification, held the presence of gold with pyrite.

## **Location**

The “Rusty Buck ” claim is located within map sheet 092J, approximately 50 kilometers west of Lillooet, BC, in the Bridge River District of the Lillooet Mining Division, approximately 20 km northeast of the community of Seton Portage. Lillooet is situated 150 km north of Hope along the Fraser River, with Seton Portage, at 130 km east of Pemberton. The claim area is situated on the slopes of Mission Mountain, which separates the Bridge River and the

## **Access**

Access to the property is gained through either of two directions. From Lillooet follow the Bridge River Road approximately 40 km to BC Hydro’s Carpenter Lake Dam. In crossing the dam and passing through the tunnel, thence proceed along the south shore of the lake until the road turns south and climbs to the summit of Mission Pass. At the summit, a BC Hydro access road turns east, where this road then provides access to the property. An alternate route provides quicker access from Vancouver, albeit the final segment is via the rough power-line road and thus constitutes rather slow going. From Pemberton proceed east along Highway 99 for 80 km to the community of D’Arcy. From D’Arcy, a secondary access road (along the power line) contours above the north shore of Anderson Lake for approximately 40 km to Seton Portage. From Seton Portage continue east to Shalath, then north to the summit of Mission Pass. At the summit the previously mentioned BC Hydro access road is reached, at coordinates 122° 14’ 14.0” West Longitude, 50° 44’ 57.5” North Latitude. Proceeding east provides access to the property. Though generally well maintained by BC Hydro, many of the dirt roads are steep and require four wheel drive vehicles. The BC Railway line runs along the northern shore of Anderson and Seton Lakes, through Shalath and Seton Portage, and provides access to both Vancouver and the British Columbia interior

## **Regional Geology**

The geology of the Bridge River area consists of a very complex sequence of sedimentary metasedimentary intrusive and volcanic rocks located between the boundary of the Intermontane and the Coastal Crystalline Belts. The area is considered to be an anticlinorium with complicated folds on the southwest limb. In many areas the limb is pierced by intrusive bodies associated with the coastal batholith. The antiform is bounded on the southwest by the main mass of the Coast Crystalline Belt and on the north west by the Yalakom Fault zone. Sedimentary and volcanic rocks of the Triassic Bridge River Group are the most extensively exposed lithologies in the region. Along the southwestern flank of the antiform the Bridge River Group, is overlain by clastic and volcanic rocks of the Triassic Cadwallader Group. However on the northeastern limb of the structure the Cadwallader, is all but completely removed by the Yalakom Fault zone. Granodiorite and less common occurrences of diorite gabbro and basalt are seen in the Bridge River area with the Bendor Pluton and the Rexmount Porphyry constituting two of the larger igneous bodies.

## **Summary**

On September 24<sup>th</sup>, 2008, following camp setup, the area prospected was that outlined by the traverse indicated on Map 2, hereto attached, and identified as "Work Area 1." That prospected on the second date, September 25<sup>th</sup>, 2008, is indicated by the traverse identified on Map 2 as "Work Area 2." Area No. 1 entailed reconnaissance prospecting on the east side of the FSR for outcrops and/or other indicators suggestive of gold bearing geology. Fourteen random rock samples were recovered, two of which on final evaluation proved worthy for conducting further microscopic examination. On the second such day, along the traverse indicated on mapping as Area No.2, seven rock samples were initially considered, from which only one proved worthy of closer examination.

## **Conclusion**

Chip samples were severed from each of the rock specimens, then placed under 100x magnification, of which only three held showing of gold, one along the contact of a vein which also showed traces of pyritic blebs, the other two coming from the same trench (previous) showing copper mineralization and an unidentified lustrous silvery metal (?zinc).

Though not the results as hoped, the claim was renewed to facilitate one further year of explorations. At the end of which, should a more positive result not be realized, the tenure may likely be dropped.

**Work Evaluation & Cost Statement**

**-- 36.0 Man Hours Prospecting --**

Labor – Dave Chamberlain.....	Sep 24 <sup>th</sup> & 25 <sup>th</sup> , 2008	9.0 hours	\$ 180.00
Labor – Kevin Bell.....	Sep 24 <sup>th</sup> & 25 <sup>th</sup> , 2008	9.0 hours	\$ 180.00
Labor – David Bell.....	Sep 24 <sup>th</sup> & 25 <sup>th</sup> , 2008	9.0 hours	\$ 180.00

Supervisory –			
Larry Amey.....	Sep 24 <sup>th</sup> & 25 <sup>th</sup> , 2008	<u>9.0 hours</u>	<u>\$ 270.00</u>

<b>Total Work Credits</b>	<b>\$ 810.00</b>
---------------------------	------------------

<b>Accommodation Allowance 4 x \$70.00</b>	<b>\$ 280.40</b>
<b>Meal Costs .....</b>	<b>\$ 104.40</b>

<b>Sub Total</b>	<b>\$ 1,194.40</b>
------------------	--------------------

<b>Allowable Vehicle Expenses (20%)</b>	<b>\$ 228.42</b>
---	------------------

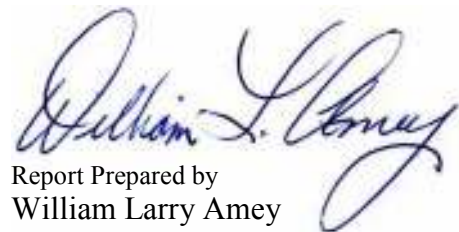
<b>Report Preparation</b>	<b>\$ 100.00</b>
---------------------------	------------------

<b>Total</b>	<b>\$ 1,532.82</b>
--------------	--------------------

**Attending Parties & Qualifications:**

Dave Chamberlain - - 4 years prospecting experience  
 Kevin Bell - - 1 year prospecting experience  
 David Bell - - 3 years prospecting experience  
 Larry Amey - - 29 years prospecting experience

December 5, 2009

  
 Report Prepared by  
 William Larry Amey

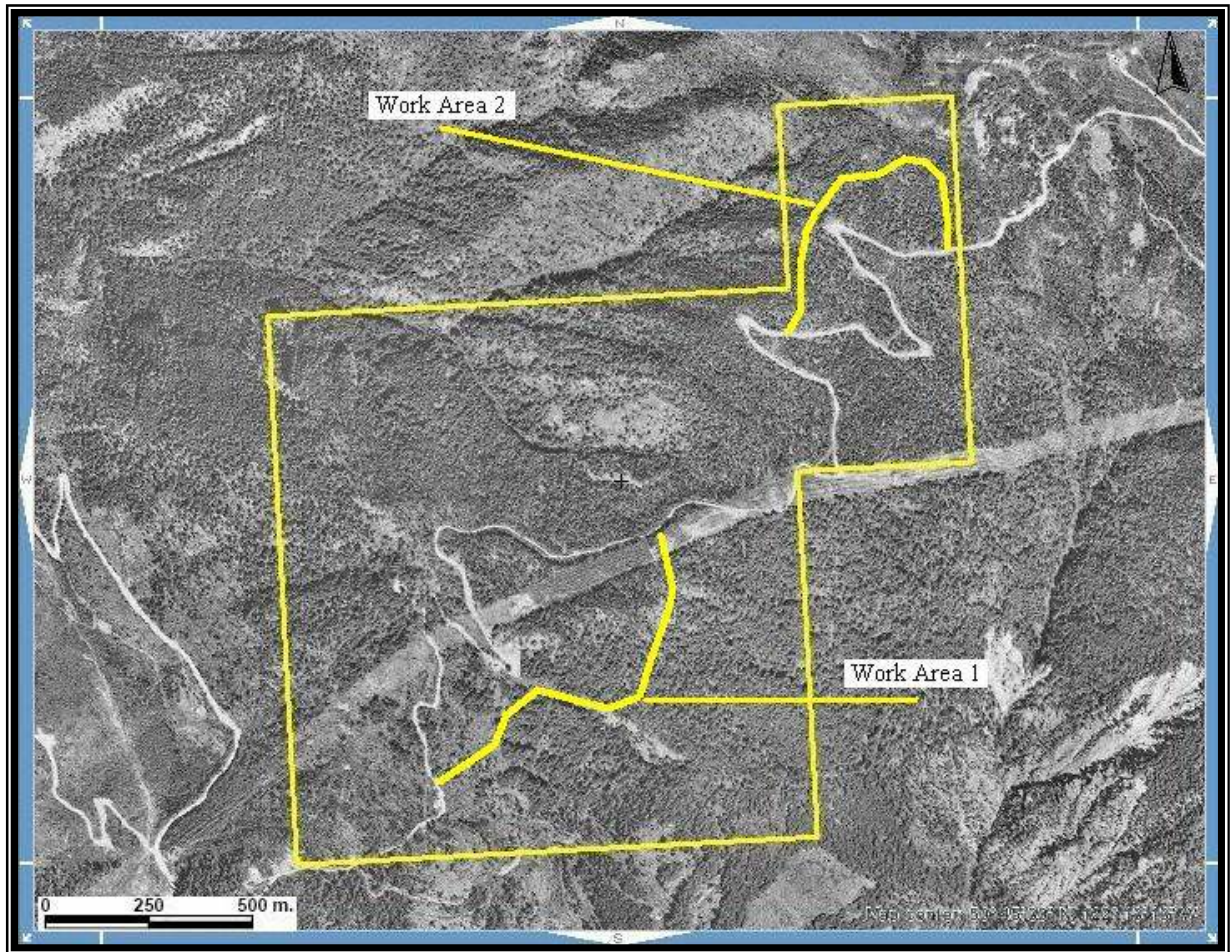
# REFERENCE MAP 1

## Geographical Location



## REFERENCE MAP 2

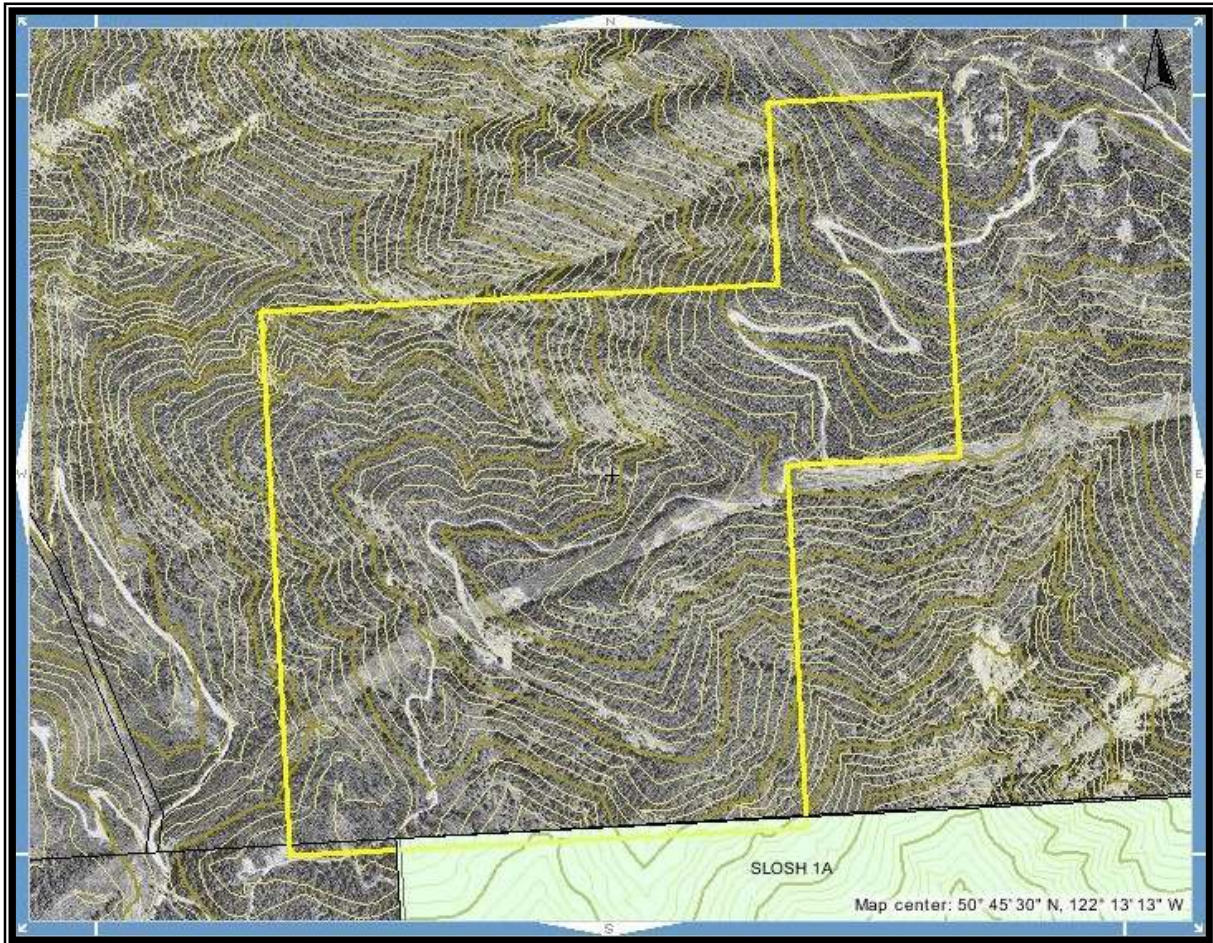
### Work Areas



Scale 1:12,000  
Map 092J Excerpt  
Tenure Coordinate Reference  
Long. 122° 13' 13" W – Lat. 50° 45' 30" N

**REFERENCE MAP 3**

**Contour Map of Claim Area**



**Scale 1: 12,000**  
**Map 092J Excerpt**  
**Tenure Coordinate Reference**  
**Long. 122° 13' 13" W – Lat. 50° 45' 30" N**