

PHYSICAL AND CHEMICAL TESTS,
SIC CLAIMS, DEADMAN VALLEY,
KAMLOOPS MINING DIVISION
(92I.096)

BC Geological Survey
Assessment Report
31261

Location: 50° 56' 30"N, 120° 58' 01"W

Owner: Absorbent Products Limited,
724 East Sarcee Ave.,
Kamloops, B.C.
V2H 1E7

Operator: Absorbent Products Limited

Author: Peter B. Read
Geotex Consultants Limited,
#832 – 470 Granville Street,
Vancouver, B.C.
V6C 1V5

Date: September 2, 2009

TABLE OF CONTENTS

1. INTRODUCTION	1
2. LOCATION	1
3. SAMPLES	1
4. RECOMMENDATIONS	1
5. STATEMENT OF AUTHOR'S QUALIFICATIONS	8
6. STATEMENT OF COSTS	9

APPENDIX:

Assay Certificates

LIST OF FIGURES

Map 1:	Regional location map	2
Map 2:	Claim map of the SIC claim and extension	3
Map 3:	Sample location map	4

LIST OF TABLES

Table 1:	Tenure Numbers	1
Table 2:	Physical Characteristics of Bentonite Samples	5
Table 3:	Whole-rock Analyses of Samples	6
Table 4:	Trace Element Analyses of Samples	7

**PHYSICAL AND CHEMICAL TESTS,
SIC CLAIMS, DEADMAN VALLEY,
KAMLOOPS MINING DIVISION
(92I.096)**

Peter B. Read

September 2, 2009

1. INTRODUCTION

Under the direction of the author, D. Bowers and A. Eastcott of Absorbent Products Limited, Kamloops, B.C., visited the claims on June 10, 2009 and sampled the extensive bentonite showings at four locations. This report embodies the physical and chemical tests of these samples.

2. LOCATION

The SIC Claim consists of 14 units held under tenure numbers 534755 (12 units) and 604696 (2 units) Table 1 (Map 2).

TABLE 1

Tenure #	Claim Name	Owner	Map #	Issue Date	Good to Date	Area (ha)
534755	SIC	200070	92I.096	2006/jun/01	2011/nov/12	244.45
604696	SIC extended	200070	92I.096	2009/may/19	2011/nov/12	40.74

The tenures lie 48 km from Kamloops on the east side of Deadman Valley about 3 km north of the junction of Deadman River and Chris Creek. They are reached from Absorbent Products Ltd. plant at Kamloops by paved road along the TransCanada Highway and Deadman River Road and then a few kilometres of the publically maintained Chris Creek Forestry Access gravel road. A three-kilometre hike takes one to the bentonite showings on the property (Map 1).

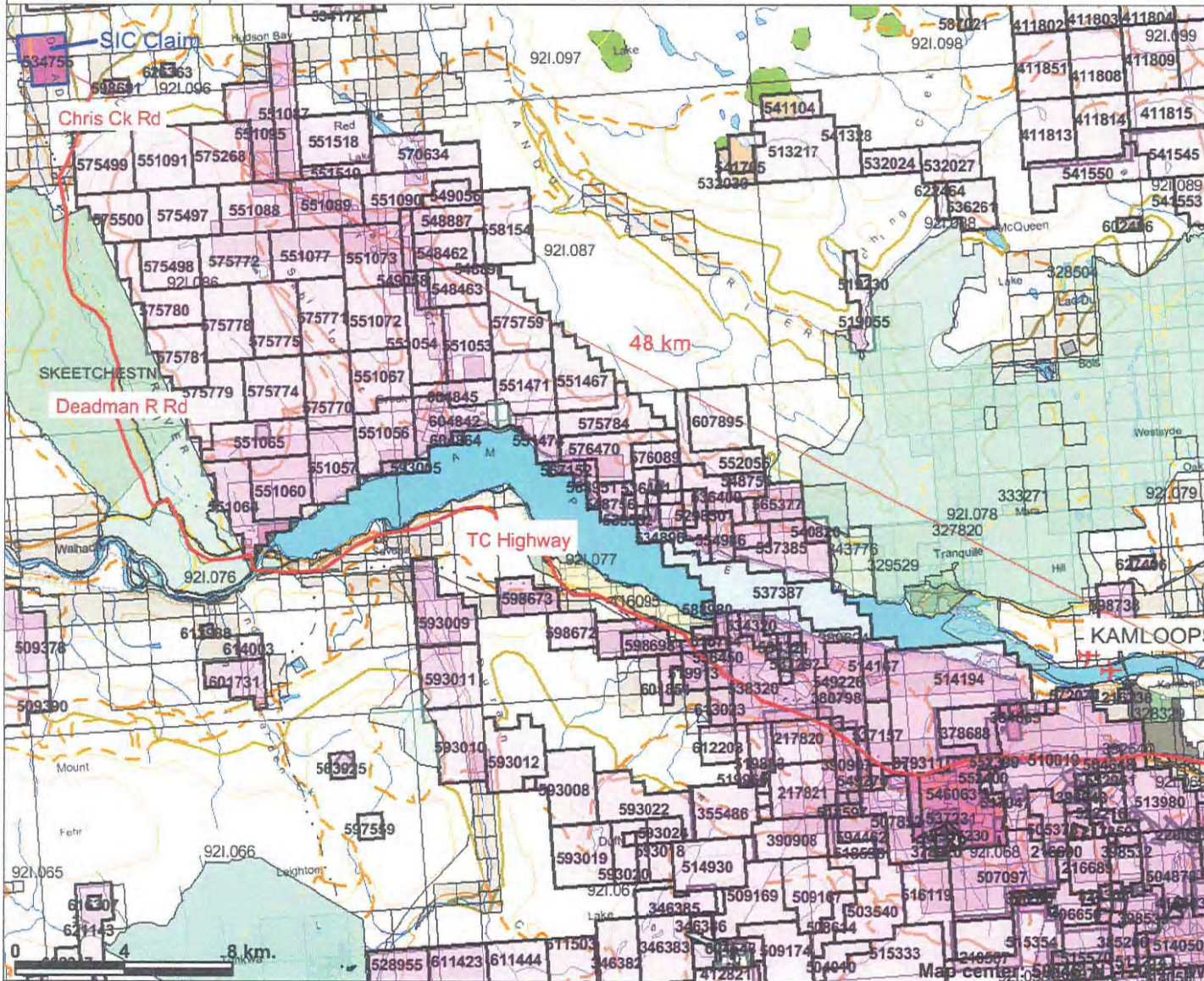
3. SAMPLES

The physical tests of four samples taken from *in situ* outcrops at locations given by UTM coordinates in NAD83 yield the following properties for unbeneficiated and Na-beneficiated treatments (Table 2, Map 3). The whole-rock and trace element analyses for the unbeneficiated and Na-beneficiated follow in table 3 and 4.

4. RECOMMENDATIONS

Given the small size of the samples collected and their weathered nature, more extensive and systematic sampling of the showing is required before removal of a 10,000 tonne bulk sample.

SIC CLAIM: Regional Location Map



Legend

- Indian Reserves
- National Parks
- Conservancy Areas
- Parks
- Mineral Tenure (current)
- Mineral Claim
- Mineral Lease
- Mineral Reserves (current)
- Placer Claim Designation
- Placer Lease Designation
- No Staking Reserve
- Conditional Reserve
- Release Required Reserve
- Surface Restriction
- Recreation Area
- Others
- Survey Parcels
- BCGS Grid
- Contours (1:250K)
- Contour - Index
- Contour - Intermediate
- Area of Exclusion
- Area of Indefinite Contours
- Annotation (1:250K)
- Transportation - Points (1:250K)
- Airfield
- Anchorage - Seaplane
- Ferry Route
- Helipoint
- Seaplane Base
- Air Field
- Airport
- Air Feature - Condition Unknown

Scale: 1:223,357

Map 1

This map is a user generated static output from an Internet mapping site and is for general reference only. Data layers that appear on this map may or may not be accurate, current, or otherwise reliable. THIS MAP IS NOT TO BE USED FOR NAVIGATION.

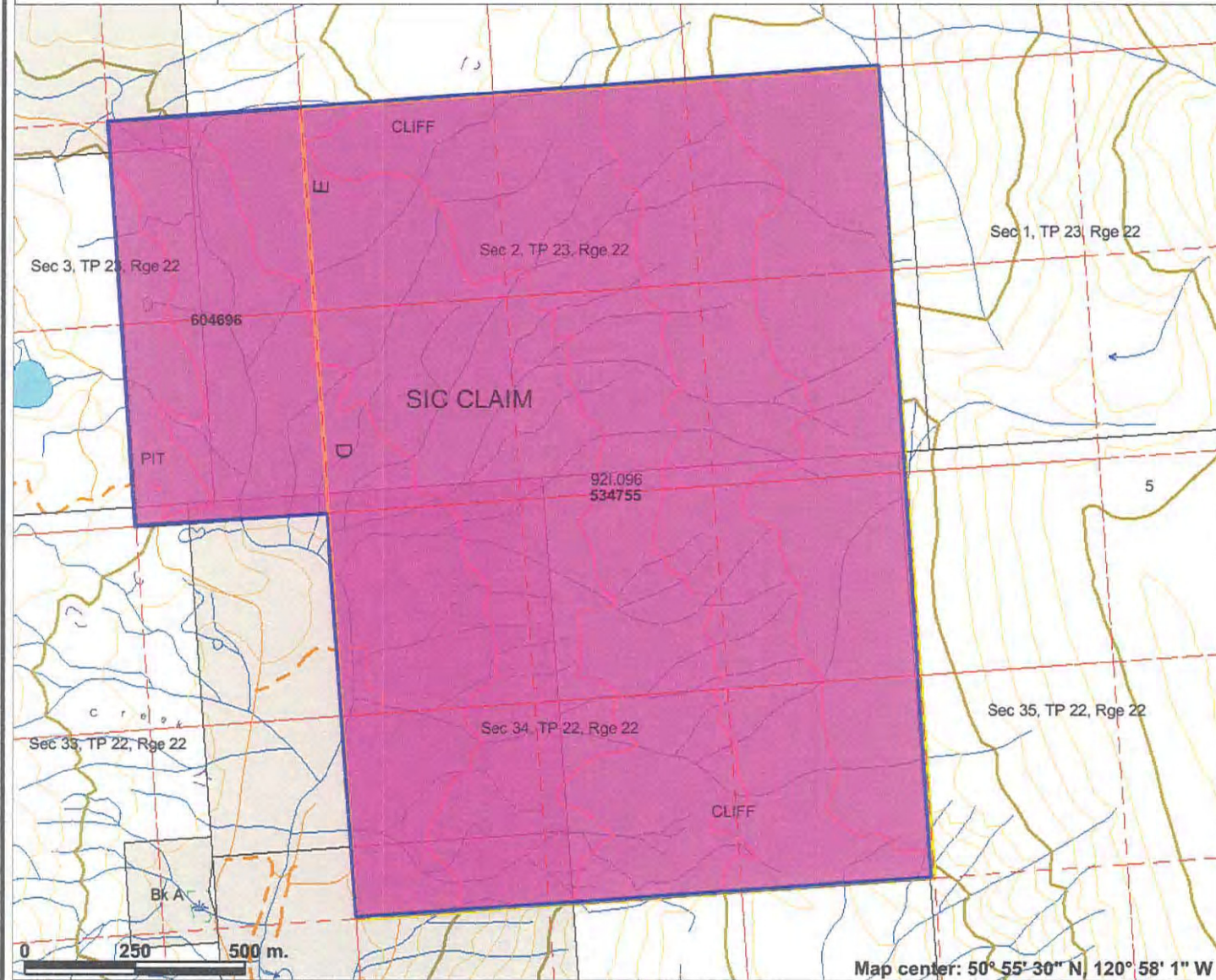
SIC CLAIM: Tenure # 534755 & 604696



Legend

- Indian Reserves
- National Parks
- Conservancy Areas
- Parks
- MTO Grid (MTO)
- Blocked by MEM
- Other
- Mineral Tenure (current)
- Mineral Claim
- Mineral Lease
- Mineral Reserves (current)
- Placer Claim Designation
- Placer Lease Designation
- No Staking Reserve
- Conditional Reserve
- Release Required Reserve
- Surface Restriction
- Recreation Area
- Others
- Integrated Cadastral Fabric
- Survey Parcels
- BCGS Grid
- Contours (TRIM)
- Contour - Index
- Contour - Index.Indefinite
- Contour - Index.Depression
- Contour - Index.Depression Indefinite
- Contour - Intermediate
- Contour - Intermediate.Indefinite
- Contour - Intermediate.Depression
- Contour - Intermediate.Depression Indefinite
- Area of Exclusion

Scale: 1:13,730



Map 2

3

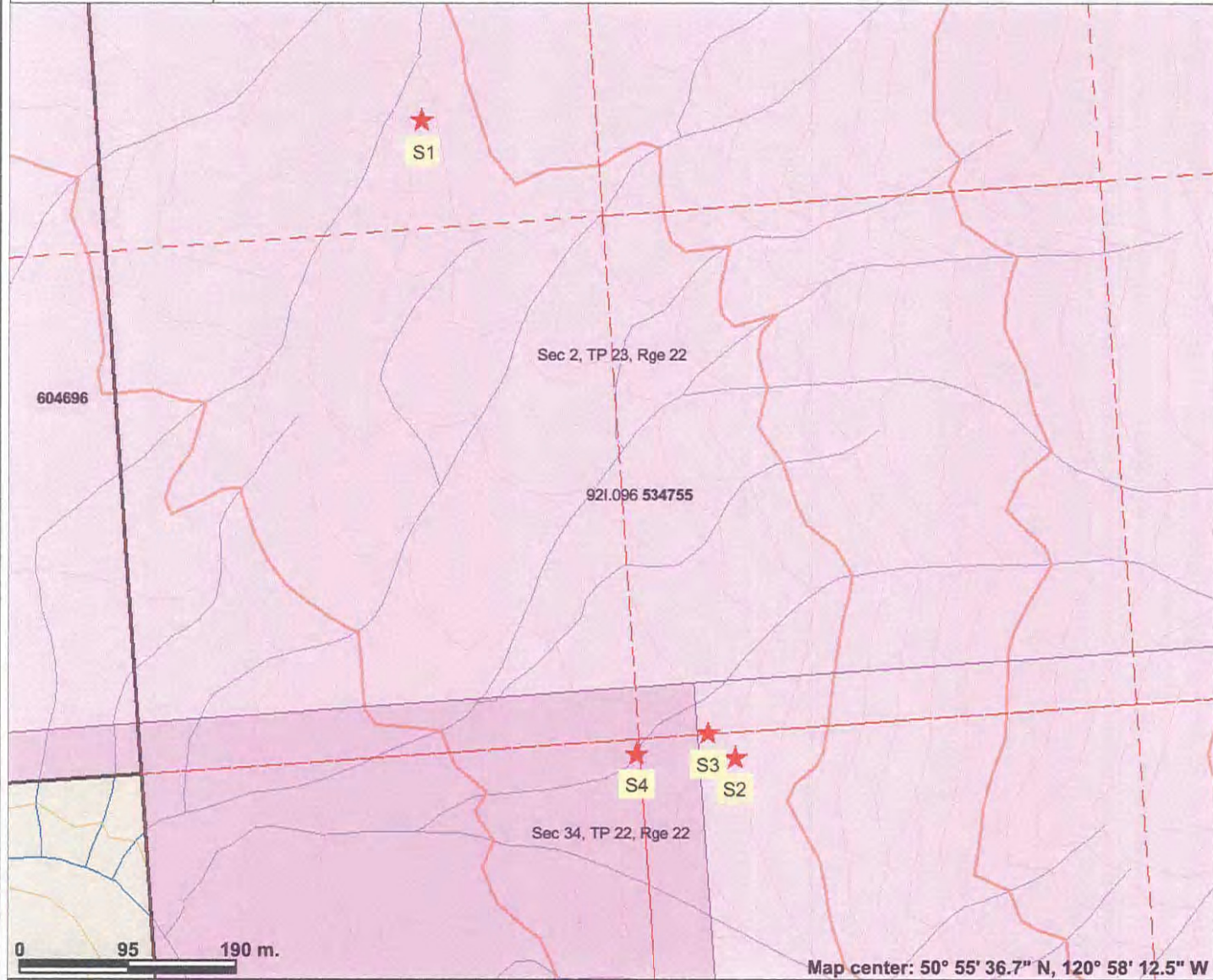
This map is a user generated static output from an Internet mapping site and is for general reference only. Data layers that appear on this map may or may not be accurate, current, or otherwise reliable. THIS MAP IS NOT TO BE USED FOR NAVIGATION.

SIC CLAIM: LOCATION OF SAMPLES



Legend

- Indian Reserves
- National Parks
- Conservancy Areas
- Parks
- MTO Grid (MTO)
- Blocked by MEM
- Other
- Mineral Tenure (current)
 - Mineral Claim
 - Mineral Lease
 - Mineral Reserves (current)
 - Placer Claim Designation
 - Placer Lease Designation
 - No Staking Reserve
 - Conditional Reserve
 - Release Required Reserve
 - Surface Restriction
 - Recreation Area
 - Others
 - Integrated Cadastral Fabric
 - Survey Parcels
 - BCGS Grid
 - Contours (TRIM)
 - Contour - Index
 - Contour - Index.Indefinite
 - Contour - Index.Depression
 - Contour - Index.Depression Indefinite
 - Contour - Intermediate
 - Contour - Intermediate.Indefinite
 - Contour - Intermediate.Depression
 - Contour - Intermediate.Depression Indefinite
 - Area of Exclusion



Map 3

This map is a user generated static output from an Internet mapping site and is for general reference only. Data layers that appear on this map may or may not be accurate, current, or otherwise reliable. THIS MAP IS NOT TO BE USED FOR NAVIGATION.

TABLE 2

**EXPLORATION TESTING
SIC CLAIM SAMPLES**

Jun-09

SAMPLES LABELLED

	WET MOISTURE	DRY MOISTURE	BULK DENSITY (lbs/ft ³)	TAP DENSITY (lbs/ft ³)	FREE SWELL	CLUMP ASSESSMENT	CLUMP SIZE	CLUMP WEIGHT
S1 -Brownish Grey Unbeneficiated IOU 64205 UTM 5643988	10.15%	4.45%	1.032 64.43	1.122 70.05	150%	Clump Formed Weak	3.8cm diam 1.0cm depth	32.4g
S2-Medium Brownish Red Unbeneficiated IOU 642750 UTM 5643413	21.60%	6.10%	0.781 48.76	0.818 51.07	150%	Clump Formed Weak Sticky	3.1cm diam 1.4cm depth	32.8g
S3-Light Tan/Greenish tint Unbeneficiated IOU 642727 UTM 5643435	12.05%	6.55%	0.95 59.12	1.015 63.37	150%	Clump Formed Weak Sticky	3.9cm diam 1.2cm depth	37.8g
S4-Light Tan/Greenish tint Unbeneficiated IOU 642663 UTM 5643421	19.75%	8.40%	1.002 62.55	1.054 65.80	140%	Clump Formed Weak Sticky	4.0cm diam 0.9cm depth	38.8g
S1 -Brownish Grey Beneficiated IOU 64205 UTM 5643988	10.15%	4.30%	1.038 64.80	1.134 70.80	170%	Clump Formed Weak	4.4cm diam 1.2cm depth	32.8g
S2-Medium Brownish Red Beneficiated IOU 642750 UTM 5643413	21.60%	5.80%	0.776 48.45	0.809 50.51	200%	Clump Formed Weak Sticky	3.4cm diam 1.5cm depth	33.1g
S3-Light Tan/Greenish tint Beneficiated IOU 642727 UTM 5643435	12.05%	6.10%	0.95 59.31	1.023 63.87	150%	Clump Formed Weak Sticky	4.2cm diam 1.5cm depth	38.5g
S4-Light Tan/Greenish tint Beneficiated IOU 642663 UTM 5643421	19.75%	5.30%	0.996 62.18	1.048 65.43	140%	Clump Formed Sticky *Best One*	4.6cm diam 1.0cm depth	39.6g

6
TABLE 3:

ALS TESTING JUNE 2009
Whole Rock Analysis

	SIC SAMPLE S1	SIC SAMPLE S2	SIC SAMPLE S3	SIC SAMPLE S4	SIC SAMPLE S2 BENEFICIATED	SIC SAMPLE S4 BENEFICIATED
Al ₂ O ₃	16.38	17.12	15.3	17.22	17.02	17.26
BaO	0.11	0.16	0.54	0.19	0.2	0.19
CaO	1.51	4.65	4.45	4.67	4.48	4.55
Cr ₂ O ₃	0.02	0.03	0.02	0.02	0.02	0.02
Fe ₂ O ₃	7.36	6.22	7.68	5.78	6.3	5.8
K ₂ O	2.28	0.46	0.36	0.38	0.45	0.37
MgO	2.46	2.53	2.42	2.44	2.51	2.46
MnO	0.07	0.11	0.2	0.03	0.11	0.02
Na ₂ O	3.02	2.33	2.05	2.3	2.94	2.87
P ₂ O ₅	0.116	0.331	0.527	0.6	0.345	0.581
SiO ₂	61.04	58.39	58.41	59.11	58.35	58.45
SrO	0.05	0.14	0.24	0.21	0.15	0.18
TiO ₂	0.7	1.09	1.14	1.37	1.1	1.38
LOI (Chemex)	4.79	6.2	5.89	5.48	5.85	5.42
Total	99.9	99.75	99.22	99.79	99.82	99.56

Trace minerals

Element Reading	SIC SAMPLE S1	SIC SAMPLE S2	SIC SAMPLE S3	SIC SAMPLE S4	SIC SAMPLE S2 BENEFICIATED	SIC SAMPLE S4 BENEFICIATED
Ag ppm	0.09	0.06	0.06	0.07	0.07	0.05
Al %	7.57	8.15	7.48	8.26	7.73	8
As ppm	4.1	25.7	31.3	28.7	25.8	28.9
Ba ppm	890	1290	4360	1600	1680	1500
Be ppm	1.54	1.56	1.64	1.74	1.51	1.69
Bi ppm	0.13	0.11	0.05	0.06	0.1	0.08
Ca %	1.03	3.22	3.07	3.29	3.02	3.01
Cd ppm	0.09	0.19	0.17	0.14	0.2	0.12
Ce ppm	31.7	56.2	86.8	72.4	53.4	66.3
Co ppm	15.3	27.4	29.8	20.3	27.2	20
Cr ppm	130	135	122	144	126	133
Cs ppm	5.03	3.23	6.73	2.54	3.17	2.51
Cu ppm	44.2	47.9	45.7	53.4	47.2	52.2
Fe %	4.75	4.13	5.08	3.9	4.07	3.75
Ga ppm	18.45	21.7	19.95	22.4	21.7	22.2
Ge ppm	0.2	0.19	0.23	0.19	0.19	0.19
Hf ppm	1.8	4	3.9	4.5	4	4.4
Hg ppm	0.07	0.07	0.03	0.05	0.06	0.05
In ppm	0.045	0.06	0.058	0.069	0.065	0.068
K %	1.65	0.35	0.27	0.28	0.34	0.27
La ppm	15.8	25.5	40	33	24.1	30.2
Li ppm	21.3	11.6	7.8	13.6	11.4	13.5
Mg %	1.24	1.31	1.26	1.27	1.26	1.25
Mn ppm	458	755	1380	188	736	149
Mo ppm	0.63	1.24	1.19	1.82	1.25	1.65
Na %	2.09	1.74	1.53	1.75	2.13	2.12
Nb ppm	7.5	8.2	9.3	9.6	8.2	9.5
Ni ppm	55.8	70.3	83.2	69.2	70.6	68.3
P ppm	480	1500	2400	2820	1560	2630
Pb ppm	11.1	14	12.2	11.1	13.9	10.7
Rb ppm	66.4	9.3	7.4	4.1	8.4	4.4
Re ppm	0.05	0.002	0.002	0.002	0.002	0.002
S %	0.27	0.2	0.2	0.13	0.24	0.1
Sb ppm	1.2	3.08	1.42	2.49	3.1	2.44
Sc ppm	15.4	15.6	16.9	18.2	15.1	17.8
Se ppm	6	2	2	2	2	2
Sn ppm	0.9	1.1	1.1	1.3	1.8	1.4
Sr ppm	473	1285	2120	1900	1280	1665
Ta ppm	0.42	0.42	0.42	0.48	0.42	0.47
Te ppm	0.07	0.07	0.06	0.05	0.08	0.05
Th ppm	3.7	4.2	4.1	3	3.7	3
Ti %	0.365	0.601	0.628	0.771	0.595	0.753
Tl ppm	0.36	0.15	0.05	0.06	0.15	0.05
U ppm	1.5	1.6	1.7	2.7	1.5	2.4
V ppm	123	153	172	199	152	191
W ppm	1.7	0.6	0.5	0.7	0.6	0.7
Y ppm	12	12.3	16.1	19.6	12.8	18.7
Zn ppm	78	92	102	93	93	90
Zr ppm	58.7	143.5	149.5	167.5	144.5	164.5

Trace Element Analyses

STATEMENT OF AUTHOR'S QUALIFICATIONS

I, Peter B. Read, of Geotex Consultants Limited, #832 - 470 Granville Street, Vancouver, B.C., V6C 1V5, certify that:

- I am an independent consulting geological engineer providing geological expertise to the exploration, mining and engineering communities and federal, provincial and municipal governments.
- I am a member in good standing of the Geological Association of Canada (F1746) since 1971.
- I am a graduate of the University of British Columbia with a Bachelor of Geological Engineering 1957 and Masters of Geological Engineering 1960, and a PhD in Geology from the University of California, Berkeley 1965.
- I have practiced my profession continuously since leaving academia in 1974 and since 1977 in the field of industrial minerals for industry and the Government of British Columbia. With respect to Absorbent Products Limited, I have consulted in the industrial mineral field since 1993.
- I am completely independent of Absorbent Products Limited and hold no financial interest in the company nor do I expect to do so in the future.
- This report is based on 2.0 days in the field at the site of test pitting in 2003 and 0.5 days in 2009.

Dated at Vancouver, B.C., this 2nd day of September, 2009.

STATEMENT OF COSTS



ABSORBENT PRODUCTS LTD.

724 EAST SARCEE ST., KAMLOOPS, BC V2H 1E7

PHONE (250) 372-1600

FAX (250) 372-3777

STATEMENT OF EXPENSES

SIC CLAIMS

Tenure #: 534755

DATE	PAYABLE TO	EXPENSE	AMOUNT	TOTAL
<u>Start-up/Assessment Costs:</u>				
May-Sep 2009	Geotex Consultants	Sic Claims	\$1,260.00	
June 30th, 2009	Pacific Soil Analysis Inc.	Outside Lab Testing	\$176.40	
June 26th, 2009	ALS Chemex	Outside Lab Testing	\$460.85	
				<u>\$1,897.25</u>
<u>Salaries Payable:</u>				
May 29th & June 9th	Senior Miner	Salary - Equipment Operators	\$729.00	
May 29th & June 9th	Miner	Salary - Equipment Operators	\$641.87	
June 10-30	Lab Manager	Salary - Internal Lab Sample Testing	\$600.00	
June 11th	Manager of Mines	Salary - Mining Supervisor	\$101.00	
				<u>\$2,071.87</u>
<u>Travel Expenses:</u>				
Mileage - May 29th		75 km x 2 @ 45 cents		\$67.50
Mileage - June 9th		75 km x 2 @ 45 cents		\$67.50
				<u>\$135.00</u>
<u>Machinery & Equipment:</u>				
				<u>\$0.00</u>
	TOTAL			<u><u>\$4,104.12</u></u>



ALS Chemex

EXCELLENCE IN ANALYTICAL CHEMISTRY

ALS Canada Ltd.

212 Brooksbank Avenue
North Vancouver BC V7J 2C1

Phone: 604 984 0221 Fax: 604 984 0218 www.alschemex.com

To: ABSORBENT PRODUCTS LTD.
724 E SARCEE ST
KAMLOOPS BC V2H 1E7

INVOICE NUMBER 1923071

BILLING INFORMATION	
Certificate:	VA09061511
Sample Type:	Crushed Rock
Account:	QCQ
Date:	26-JUN-2009
Project:	SIC Sample Testing
P.O. No.:	
Quote:	
Terms:	Net 30 Days C1
Comments:	

ANALYSED FOR			UNIT	TOTAL
QUANTITY	CODE	DESCRIPTION	PRICE	
1	BAT-01	Administration Fee	30.00	30.00
6	ME-MS61m	ME-MS61 plus Hg by CV-AA	34.25	205.50
6	LOG-22	Sample login - Rcd w/o BarCode	1.15	6.90
6	PUL-31	Pulverize split to 85% <75 um	3.90	23.40
6	ME-XRF06	Whole Rock Package - XRF	28.05	168.30
6	GEODRY-01	Dry Pulp at 105 C	0.80	4.80

To: **ABSORBENT PRODUCTS LTD.**
ATTN: JEN BYLYCIA
724 E SARCEE ST
KAMLOOPS BC V2H 1E7

SUBTOTAL (CAD)	\$	438.90
R100938885 GST	\$	21.95
TOTAL PAYABLE (CAD)	\$	<u>460.85</u>

Payment may be made by: Cheque or Bank Transfer

Beneficiary Name:	ALS Canada Ltd.
Bank:	Royal Bank of Canada
SWIFT:	ROYCCAT2
Address:	Vancouver, BC, CAN
Account:	003-00010-1001098

Please Remit Payments To :

ALS Chemex

212 Brooksbank Avenue
North Vancouver BC V7J 2C1



APPENDIX:
Assay Certificates





ALS Chemex

EXCELLENCE IN ANALYTICAL CHEMISTRY

ALS Canada Ltd.

212 Brooksbank Avenue
North Vancouver BC V7J 2C1
Phone: 604 984 0221 Fax: 604 984 0218 www.alschemex.com

To: ABSORBENT PRODUCTS LTD.
724 E SARCEE ST
KAMLOOPS BC V2H 1E7

Page: 1
Finalized Date: 26-JUN-2009
Account: QCQ

CERTIFICATE VA09061511

Project: SIC Sample Testing
P.O. No.:
This report is for 6 Crushed Rock samples submitted to our lab in Vancouver, BC, Canada on 17-JUN-2009.
The following have access to data associated with this certificate:
JEN BYLYCIA

SAMPLE PREPARATION

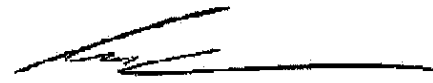
ALS CODE	DESCRIPTION
WEI-21	Received Sample Weight
LOG-22	Sample login - Rcd w/o BarCode
GEODRY-01	Dry Pulp at 105 C
PUL-31	Pulverize split to 85% <75 um

ANALYTICAL PROCEDURES

ALS CODE	DESCRIPTION	INSTRUMENT
ME-XRF06	Whole Rock Package - XRF	XRF
OA-GRA06	LOI for ME-XRF06	WST-SIM
ME-MS61	48 element four acid ICP-MS	
Hg-CV41	Trace Hg - cold vapor/AAS	FIMS

To: ABSORBENT PRODUCTS LTD.
ATTN: JEN BYLYCIA
724 E SARCEE ST
KAMLOOPS BC V2H 1E7

This is the Final Report and supersedes any preliminary report with this certificate number. Results apply to samples as submitted. All pages of this report have been checked and approved for release.

Signature: 
Colin Ramshaw, Vancouver Laboratory Manager



ALS Chemex

EXCELLENCE IN ANALYTICAL CHEMISTRY

ALS Canada Ltd.

212 Brooksbank Avenue

North Vancouver BC V7J 2C1

Phone: 604 984 0221 Fax: 604 984 0218 www.alschemex.com

To: ABSORBENT PRODUCTS LTD.

724 E SARCEE ST

KAMLOOPS BC V2H 1E7

Page: 2 - A

Total # Pages: 2 (A - E)

Plus Appendix Pages

Finalized Date: 26-JUN-2009

Account: QCQ

Project: SIC Sample Testing

CERTIFICATE OF ANALYSIS VA09061511

Sample Description	WEI-21	ME-MS61	ME-MS61	ME-MS61	ME-MS61	ME-MS61	ME-MS61	ME-MS61	ME-MS61	ME-MS61	ME-MS61	ME-MS61	ME-MS61	ME-MS61	ME-MS61
	Recvd Wt.	Ag	Al	As	Ba	Be	Bi	Ca	Cd	Ce	Co	Cr	Cs	Cu	Fe
Method Analyte Units LOR	kg	ppm	%	ppm	ppm	ppm	ppm	%	ppm	ppm	ppm	ppm	ppm	ppm	%
SIC SAMPLE S1	0.10	0.09	7.57	4.1	890	1.54	0.13	1.03	0.09	31.7	15.3	130	5.03	44.2	4.75
SIC SAMPLE S2	0.08	0.06	8.15	25.7	1290	1.56	0.11	3.22	0.19	56.2	27.4	135	3.23	47.9	4.13
SIC SAMPLE S3	0.10	0.06	7.48	31.3	4360	1.64	0.05	3.07	0.17	86.8	29.8	122	6.73	45.7	5.08
SIC SAMPLE S4	0.12	0.07	8.26	28.7	1600	1.74	0.05	3.29	0.14	72.4	20.3	144	2.54	53.4	3.9
SIC SAMPLE S2 BENIFICIATED	0.06	0.07	7.73	25.8	1680	1.51	0.1	3.02	0.2	53.4	27.2	126	3.17	47.2	4.07
SIC SAMPLE S4 BENIFICIATED	0.10	0.05	8	28.9	1500	1.69	0.08	3.01	0.12	66.3	20	133	2.51	52.2	3.75

***** See Appendix Page for comments regarding this certificate *****



ALS Chemex

EXCELLENCE IN ANALYTICAL CHEMISTRY

ALS Canada Ltd.

212 Brooksbank Avenue

North Vancouver BC V7J 2C1

Phone: 604 984 0221 Fax: 604 984 0218 www.alschemex.com

To: ABSORBENT PRODUCTS LTD.

724 E SARCEE ST

KAMLOOPS BC V2H 1E7

Page: 2 - B

Total # Pages: 2 (A - E)

Plus Appendix Pages

Finalized Date: 26-JUN-2009

Account: QCQ

Project: SIC Sample Testing

CERTIFICATE OF ANALYSIS VA09061511

Sample Description	Method	ME-MS61	ME-MS61	ME-MS61	Hg-CV41	ME-MS61	ME-MS61	ME-MS61	ME-MS61	ME-MS61	ME-MS61	ME-MS61	ME-MS61	ME-MS61	ME-MS61	ME-MS61
	Analyte	Ga	Ge	Hf	Hg	In	K	La	Li	Mg	Mn	Mo	Na	Nb	Ni	P
	Units	ppm	ppm	ppm	ppm	ppm	%	ppm	ppm	%	ppm	ppm	%	ppm	ppm	ppm
LOR	0.05	0.05	0.1	0.01	0.005	0.01	0.5	0.2	0.01	5	0.05	0.01	0.1	0.2	10	
SIC SAMPLE S1		18.45	0.2	1.8	0.07	0.045	1.65	15.8	21.3	1.24	458	0.63	2.09	7.5	55.8	480
SIC SAMPLE S2		21.7	0.19	4	0.07	0.06	0.35	25.5	11.6	1.31	755	1.24	1.74	8.2	70.3	1500
SIC SAMPLE S3		19.95	0.23	3.9	0.03	0.058	0.27	40	7.8	1.26	1380	1.19	1.53	9.3	83.2	2400
SIC SAMPLE S4		22.4	0.19	4.5	0.05	0.069	0.28	33	13.6	1.27	188	1.82	1.75	9.6	69.2	2820
SIC SAMPLE S2 BENIFICIATED		21.7	0.19	4	0.06	0.065	0.34	24.1	11.4	1.26	736	1.25	2.13	8.2	70.6	1560
SIC SAMPLE S4 BENIFICIATED		22.2	0.19	4.4	0.05	0.068	0.27	30.2	13.5	1.25	149	1.65	2.12	9.5	68.3	2630



ALS Chemex

EXCELLENCE IN ANALYTICAL CHEMISTRY

ALS Canada Ltd.

212 Brooksbank Avenue

North Vancouver BC V7J 2C1

Phone: 604 984 0221 Fax: 604 984 0218 www.alschemex.com

To: ABSORBENT PRODUCTS LTD.

724 E SARCEE ST

KAMLOOPS BC V2H 1E7

Page: 2 - C

Total # Pages: 2 (A - E)

Plus Appendix Pages

Finalized Date: 26-JUN-2009

Account: QCQ

Project: SIC Sample Testing

CERTIFICATE OF ANALYSIS VA09061511

Sample Description	Method	ME-MS61	ME-MS61	ME-MS61	ME-MS61	ME-MS61	ME-MS61	ME-MS61	ME-MS61	ME-MS61	ME-MS61	ME-MS61	ME-MS61	ME-MS61	ME-MS61	
	Analyte	Pb	Rb	Re	S	Sb	Sc	Se	Sn	Sr	Ta	Te	Th	Ti	TI	U
	Units LOR	ppm	ppm	ppm	%	ppm	ppm	ppm	ppm	ppm	ppm	ppm	ppm	%	ppm	ppm
		0.5	0.1	0.002	0.01	0.05	0.1	1	0.2	0.2	0.05	0.05	0.2	0.005	0.02	0.1
SIC SAMPLE S1		11.1	66.4	0.005	0.27	1.2	15.4	6	0.9	473	0.42	0.07	3.7	0.365	0.36	1.5
SIC SAMPLE S2		14	9.3	<0.002	0.2	3.08	15.6	2	1.1	1285	0.42	0.07	4.2	0.601	0.15	1.6
SIC SAMPLE S3		12.2	7.4	<0.002	0.2	1.42	16.9	2	1.1	2120	0.42	0.06	4.1	0.628	0.05	1.7
SIC SAMPLE S4		11.1	4.1	<0.002	0.13	2.49	18.2	2	1.3	1900	0.48	<0.05	3	0.771	0.06	2.7
SIC SAMPLE S2 BENIFICIATED		13.9	8.4	<0.002	0.24	3.1	15.1	2	1.8	1280	0.42	0.08	3.7	0.595	0.15	1.5
SIC SAMPLE S4 BENIFICIATED		10.7	4.4	<0.002	0.1	2.44	17.8	2	1.4	1665	0.47	0.05	3	0.753	0.05	2.4



ALS Chemex

EXCELLENCE IN ANALYTICAL CHEMISTRY

ALS Canada Ltd.

212 Brooksbank Avenue

North Vancouver BC V7J 2C1

Phone: 604 984 0221 Fax: 604 984 0218 www.alschemex.com

To: ABSORBENT PRODUCTS LTD.

724 E SARCEE ST

KAMLOOPS BC V2H 1E7

Page: 2 - D

Total # Pages: 2 (A - E)

Plus Appendix Pages

Finalized Date: 26-JUN-2009

Account: QCQ

Project: SIC Sample Testing

CERTIFICATE OF ANALYSIS VA09061511

Sample Description	Method	ME-MS61	ME-MS61	ME-MS61	ME-MS61	ME-MS61	ME-XRF06	ME-XRF06	ME-XRF06	ME-XRF06	ME-XRF06	ME-XRF06	ME-XRF06	ME-XRF06	ME-XRF06	
	Analyte	V	W	Y	Zn	Zr	SiO2	Al2O3	Fe2O3	CaO	MgO	Na2O	K2O	Cr2O3	TiO2	MnO
	Units	ppm	ppm	ppm	ppm	ppm	%	%	%	%	%	%	%	%	%	%
LOR	1	0.1	0.1	2	0.5	0.01	0.01	0.01	0.01	0.01	0.01	0.01	0.01	0.01	0.01	0.01
SIC SAMPLE S1		123	1.7	12	78	58.7	61.04	16.38	7.36	1.51	2.46	3.02	2.28	0.02	0.70	0.07
SIC SAMPLE S2		153	0.6	12.3	92	143.5	58.39	17.12	6.22	4.65	2.53	2.33	0.46	0.03	1.09	0.11
SIC SAMPLE S3		172	0.5	16.1	102	149.5	58.41	15.30	7.68	4.45	2.42	2.05	0.36	0.02	1.14	0.20
SIC SAMPLE S4		199	0.7	19.6	93	167.5	59.11	17.22	5.78	4.67	2.44	2.30	0.38	0.02	1.37	0.03
SIC SAMPLE S2 BENIFICIATED		152	0.6	12.8	93	144.5	58.35	17.02	6.30	4.48	2.51	2.94	0.45	0.02	1.10	0.11
SIC SAMPLE S4 BENIFICIATED		191	0.7	18.7	90	164.5	58.45	17.26	5.80	4.55	2.46	2.87	0.37	0.02	1.38	0.02



ALS Chemex

EXCELLENCE IN ANALYTICAL CHEMISTRY

ALS Canada Ltd.

212 Brooksbank Avenue

North Vancouver BC V7J 2C1

Phone: 604 984 0221 Fax: 604 984 0218 www.alschemex.com

To: ABSORBENT PRODUCTS LTD.

724 E SARCEE ST

KAMLOOPS BC V2H 1E7

Page: 2 - E

Total # Pages: 2 (A - E)

Plus Appendix Pages

Finalized Date: 26-JUN-2009

Account: QCQ

Project: SIC Sample Testing

CERTIFICATE OF ANALYSIS VA09061511

Sample Description	Method	ME-XRF06	ME-XRF06	ME-XRF06	ME-XRF06	ME-XRF06
	Analyte	P2O5	SrO	BaO	LOI	Total
Units		%	%	%	%	%
LOR		0.001	0.01	0.01	0.01	0.01
SIC SAMPLE S1		0.116	0.05	0.11	4.79	99.90
SIC SAMPLE S2		0.331	0.14	0.16	6.20	99.75
SIC SAMPLE S3		0.527	0.24	0.54	5.89	99.22
SIC SAMPLE S4		0.600	0.21	0.19	5.48	99.79
SIC SAMPLE S2 BENIFICIATED		0.345	0.15	0.20	5.85	99.82
SIC SAMPLE S4 BENIFICIATED		0.581	0.18	0.19	5.42	99.56

***** See Appendix Page for comments regarding this certificate *****



ALS Chemex

EXCELLENCE IN ANALYTICAL CHEMISTRY
ALS Canada Ltd.

212 Brooksbank Avenue
North Vancouver BC V7J 2C1
Phone: 604 984 0221 Fax: 604 984 0218 www.alschemex.com

To: ABSORBENT PRODUCTS LTD.
724 E SARCEE ST
KAMLOOPS BC V2H 1E7

Page: Appendix 1
Total # Appendix Pages: 1
Finalized Date: 26-JUN-2009
Account: QCQ

Project: SIC Sample Testing

CERTIFICATE OF ANALYSIS VA09061511

Method	CERTIFICATE COMMENTS
ME-MS61	REE's may not be totally soluble in this method.

PACIFIC SOIL ANALYSIS INC.

SOIL AND PLANT ANALYSES

2009

Absorbent Products.

Sample

SIC

←-----Exchangeable-----→

C.E.C. Ca Mg Na K

←----- (me / 100 gm) -----→

June 15

Sample	C.E.C.	Ca	Mg	Na	K
S1	42.4	20.0	12.58	14.3	0.98
S2	67.0	33.8	8.46	13.9	0.85
S3	61.6	25.0	9.69	13.0	1.18
S4	61.6	33.8	5.36	12.8	0.51
Sa Beneficiated	67.4	30.0	7.43	27.6	1.18
Sy Beneficiated	63.4	32.5	5.98	25.0	1.05



#5 - 11720 Voyager Way, Richmond, B.C. V6X 3G9 Phone: (604)273-8226