

BC Geological Survey
Assessment Report
31321



REPORT ON PRELIMINARY MAGNETOMETER SURVEY

BACON LAKE CLAIMS
VANCOUVER ISLAND, BRITISH COLUMBIA

Nanaimo Mining Division
British Columbia

Latitude 49° 58' 03"N/ Longitude 125° 37' 28"W

NTS 092F/13E

OWNER & OPERATOR: WESTERN GATEWAY MINERALS INC.
301 – 1275 West 6th Avenue, Vancouver, V6H 1A4

By: Joe Paquet

December 9, 2009
Revised June 21, 2010

BC GEOLOGICAL SURVEY BRANCH
ASSESSMENT REPORT

31321

TABLE OF CONTENTS

	PAGE
1) SUMMARY	3
2) INTRODUCTION	4
2.1 General	4
2.2 Location and Access	4
2.3 History	4
2.4 Property	4
2.5 Summary of 2009 Work	5
3) GEOLOGY	6
3.1 Regional Geology	6
2.2 Property Geology	6
4) 2009 FIELD WORK	8
5) REFERENCES	9

TABLES

TABLE 1: MINERAL TENURES	5
--------------------------	---

ILLUSTRATIONS

FIGURE 1: LOCATION	3
FIGURE 1b: KEY MAP	In Pocket
FIGURE 2: CLAIM MAP	5
FIGURE 3: GEOLOGY	7
FIGURE 4: PRELIMINARY MAGNETOMETER SURVEY	In Pocket

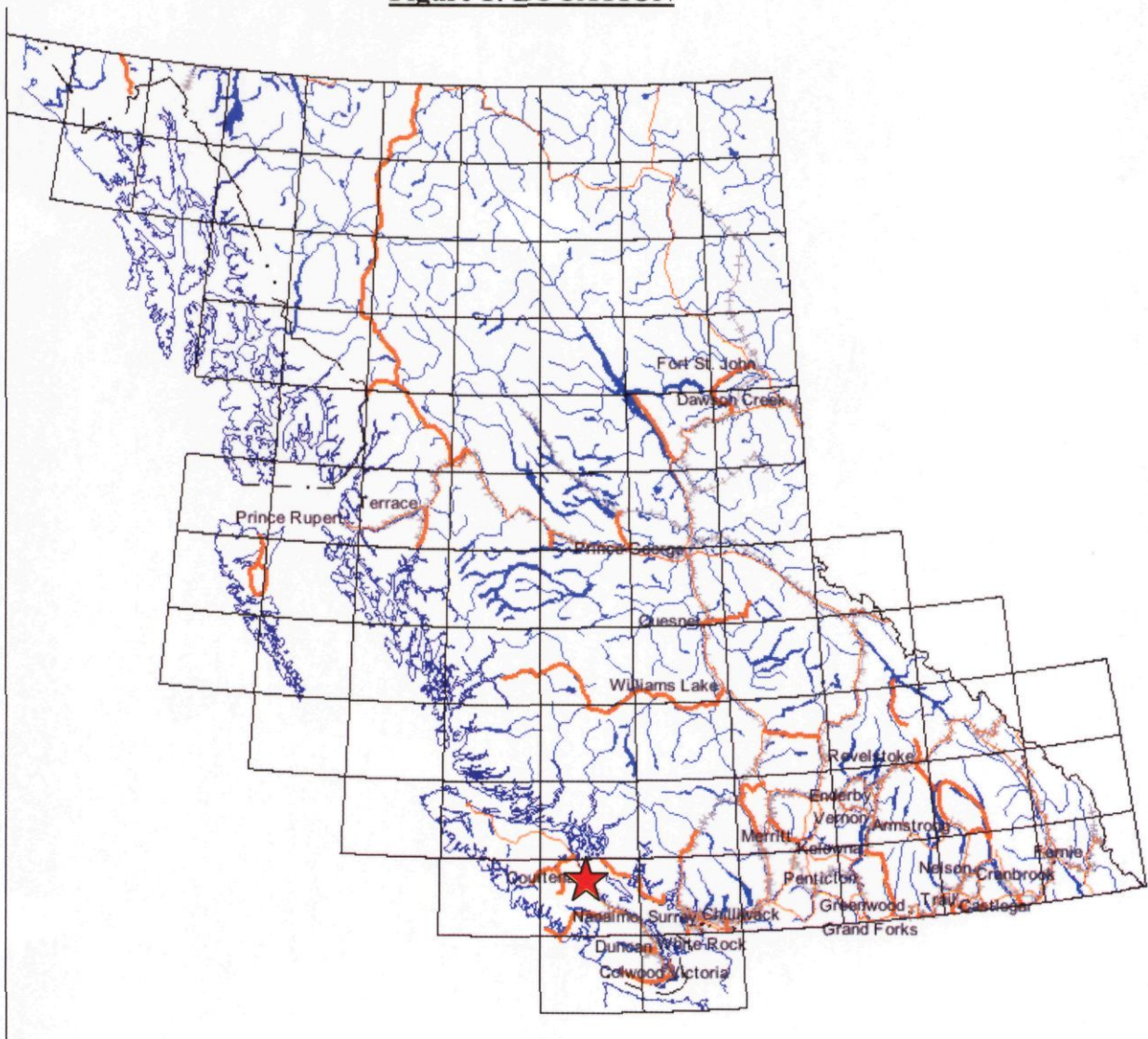
APPENDICES

<u>APPENDIX 1:</u> Magnetometer Survey Data	10
<u>APPENDIX 2:</u> Schedule of Exploration Expenses	15
<u>APPENDIX 3:</u> Beavertail Claims Assay Data	16

1.0 SUMMARY

The Bacon Lake claims are located on the eastern side of Vancouver Island approximately 35 km west of Campbell River, British Columbia as shown on **Figure 1: Location**, below. The property is owned and operated by Western Gateway Minerals Inc. of 301 -1275 West 6th Avenue, Vancouver, B.C. A magnetometer survey was conducted on the property during November 9-14, 2009. **Figure 1b: Key Map** illustrates the work relative to the claim boundary. In addition, some trenching/reclamation work was conducted at the Beavertail Claim from November 12 -13, 2010.

Figure 1: LOCATION



2.0 INTRODUCTION

2.1: GENERAL

The Bacon Lake Property is owned by Western Gateway Minerals Inc. of 301 – 1275 West 6th Avenue, Vancouver, British Columbia. This report documents property work conducted in 2009 for Assessment Credits under Schedule A of the Mineral Tenure Act Regulations.

The elevation is approximately 400-600 metres and topography consists of rolling hills with some steep slopes, particularly near Upper Campbell Lake. Extensive recent logging has left a mix of second growth forest and open cut blocks. The surveyed area was logged in the late 1950s and is covered by a relatively young (50yr) coniferous forest. Bedrock outcrop is relatively abundant in the area, particularly on the steeper slopes and topographic highs. Soils in the project area are shallow, generally <2m thickness, except for the area immediately around Bacon Lake, where deeper soils occur.

2.2: LOCATION AND ACCESS

The property is located on the eastern side of Vancouver Island, B.C. (See Figure 1 above) within the Nanaimo Mining Division. It is situated at Latitude 49° 58' 03"N, Longitude 125° 37' 28"W in the eastern foothills of the Vancouver Island Ranges about 30km west of the town of Campbell River. The site can be found near the northern edge of map sheet NTS 092F/13E. Figure 1b illustrates the magnetometer work relative to the claim boundary.

The primary access to the prospect from Campbell River is along Highway 28. From Highway 28, secondary and tertiary access forms an excellent access network to the property area. Distance by road from Campbell River is approximately 50km.

2.3: HISTORY

The project area is a series of showings of magnetite skarn that have been known for some time. Various operators have examined the area from the 1950s onward and conducted small-scale trenching, sampling and geophysical activities on different parts of the present property, and several programs of short-hole diamond drilling. (See References, page 9). The present program is intended to expand on some of the earlier work and qualify the use of magnetometer survey as an exploration tool in this area.

2.4: PROPERTY

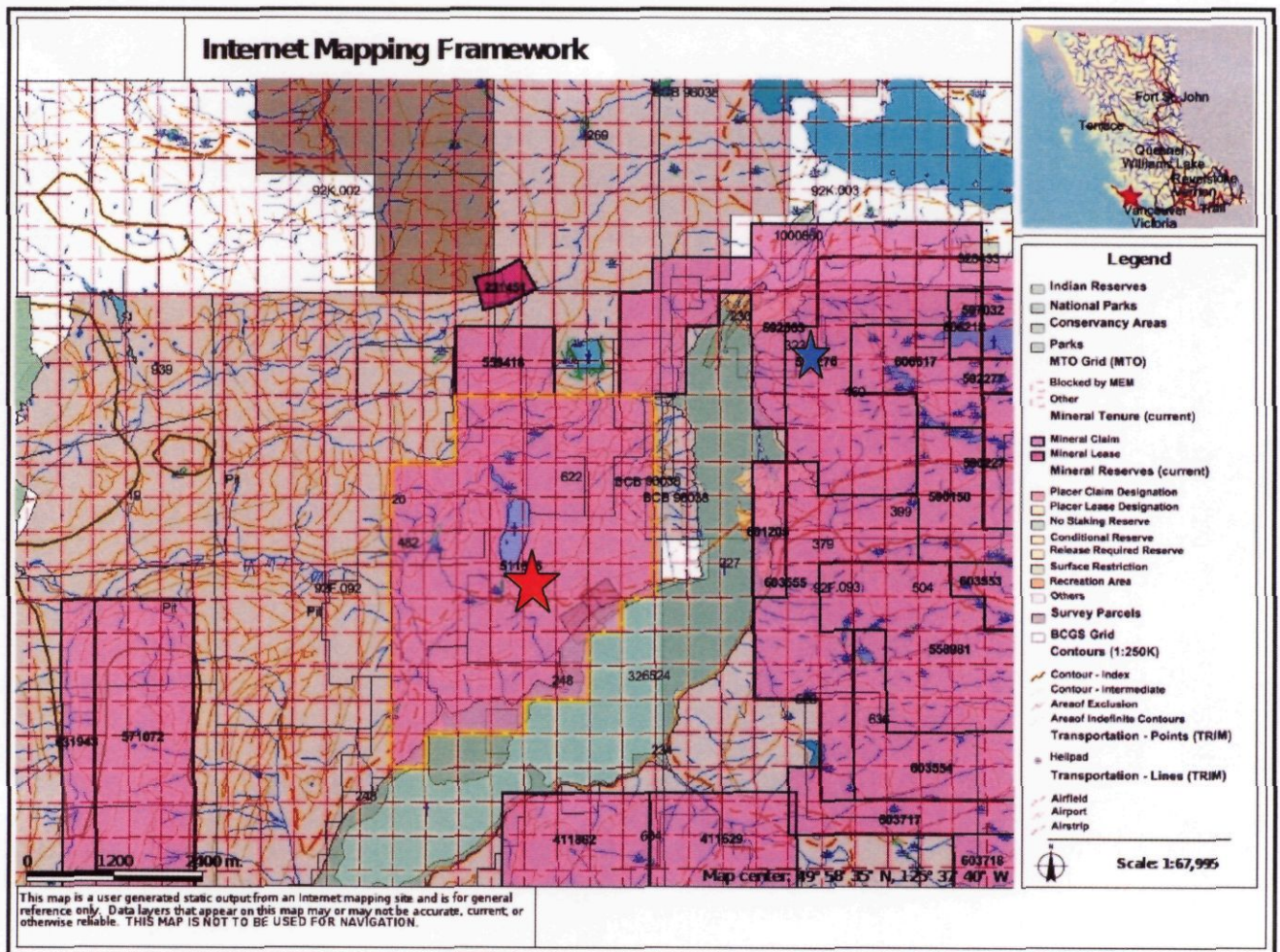
The property is known as the Bacon Lake Property and consists of a single mineral tenure, as shown in **Table 1**, below. The mineral claim is held by Western Gateway Minerals Inc.

TABLE 1: MINERAL TENURES

Tenure Number	Owner	Issue Date	Anniversary Date	Area (ha)
511635	Western Gateway Minerals	2005/April/25	2009/Dec/25	1413.25

The location of the Bacon Lake claim is shown as the large red star on **Figure 2: Claim Map**, below. Some reclamation work was completed as shown at the location marked by the small blue star on mineral tenure 592276.

FIGURE 2: CLAIM MAP



2.5: SUMMARY OF 2009 WORK

The 2009 work took place almost entirely on the Bacon Lake Mineral Claim, tenure number 511635. Some reclamation work was conducted on tenure number 592276 as part of a clean up on the Beavertail Claims. In addition, assays submitted September 9, 2009 are included from this prior work as they were pending when the prospecting report for Beavertail Claims was submitted (Event #4321068). These claims are contiguous with tenure number 511635 and as such the costs were included with this report for completeness. At Bacon Lake, a total of 234 magnetometer readings were taken, principally on a pre-existing marked grid. In addition, the linear series of magnetite showings nearest to Bacon Lake was mapped with GPS to provide data for interpretation of the overlying magnetometer survey.

3.0 GEOLOGY

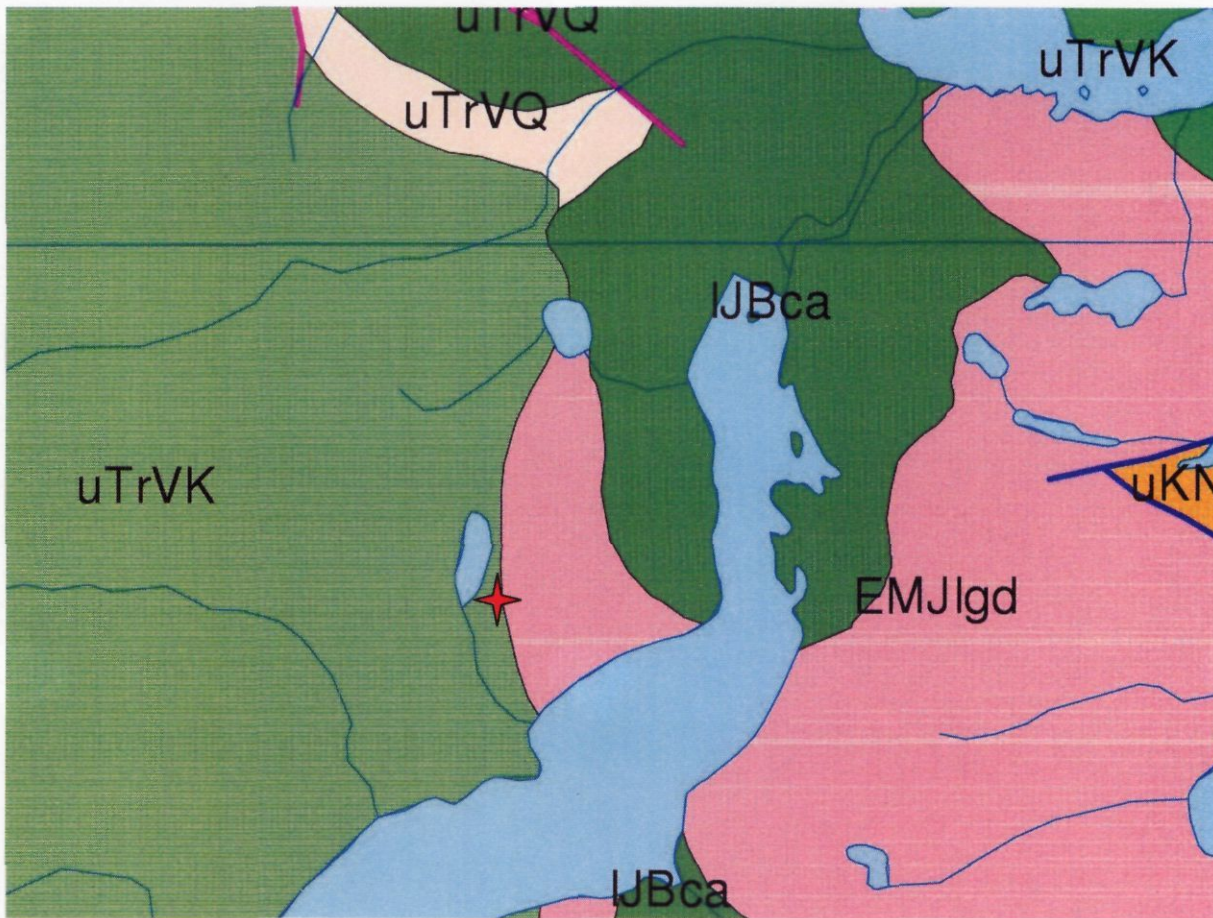
3.1: REGIONAL GEOLOGY

According to published regional geological maps of the area, the Bacon Lake showings appear to occur in volcanics found in the upper Triassic Karmutsen Group (mapped as uTrVK). The area of interest is a short distance west of the contact with Jurassic Island Intrusives (mapped as EMJIgd). Published geology in the area of the project is shown in **Figure 3: Geology Map**, below.

3.2: PROPERTY GEOLOGY

The Bacon Lake area hosts highly varied volcanic and volcanoclastic rocks, as well as minor limestones. Most are acidic to intermediate in composition; flows, pyroclastics, breccias and intrusives are all present and change character over short distances. Features such as bedding that would clearly show orientation are rare. Proximity to a nearby granodiorite stock has produced significant contact metamorphism and primary textures are generally obscured.

Within this, several dozen showings of massive magnetite have been found, often associated with skarn alteration of the surrounding rocks. The most prominent of these appear to form a continuous zone about 250m long and have been exposed and sampled by earlier operators. The present magnetometer survey covers this zone and the surrounding area.



4.0 2009 FIELD WORK

During November 9-14, 2009 a brief magnetometer survey was conducted on the property. See **Figure 4, Preliminary Magnetometer Survey**, in pocket. The raw magnetometer data is included below in **Appendix 1: Magnetometer Survey Data**. The instrument employed was an “Earth Magnetometer” manufactured by AlphaLab Inc. of Salt lake City, Utah. This instrument has an accuracy of $\pm 0.5\%$ of reading ± 0.5 milligauss (mG). At each reading the unit’s antenna was aligned to the peak magnetic field and a reading taken of total magnetic field strength in milligauss.

The survey employed an existing grid which baseline is oriented approximately north-south. The grid lines were originally cut with a chainsaw using a compass and tape, and wooden peg stations were placed every 10 metres. These were found to be in place and magnetometer readings were taken at each station. In addition, readings were taken at intervals along the main road crossing the site, which runs

diagonally across the grid. To the south of the grid, readings were taken every 10 metres on an access road that follows a major power-line, and on another line along the southern edge of the power-line clearing. These two series of readings served to extend the magnetometer test to the south of the old grid, beyond the known magnetometer showings in an area of overburden cover.

All magnetometer survey stations were located using a handheld GPS, which returned consistent accuracy of 5 metres or better. In the course of the survey all of the magnetite showings known in the area were also located with the GPS and their descriptions noted, including the locations of historical channel sampling and drilling when that could be identified. These showings are also presented on Figure 4.

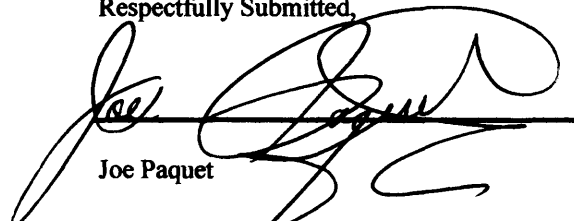
Stable background magnetic field strength was found at stations distant from the known showings, and this was recorded on each day when surveying took place. Variations up to ~5mG were observed among different days. As readings were taken approaching known magnetite showings an increase in field strength was seen. When near the showings this increase became very pronounced and field strengths of 500mG or more above background levels were found at times. As well, field reversal was observed and field strengths of 100mG or more below background levels were recorded.

To map these, the data was transformed to eliminate the complication of field reversal. For each day, the average background field strength was determined and this value subtracted from each reading. Thus each resulting number expresses the field deviation from background strength, and the absolute values of these deviations have been plotted on Figure 4 and contoured. Contour intervals of 20, 50 and 100 mG were used.

The resulting interpretation shows a clear, strong anomaly following the known major showings. A second, weaker anomaly is apparent, running sub-parallel to the first about 50 metres to the east of it. This is an area with no outcrop, so presence of magnetite could not be determined in the field. Also, the two anomalies are seen to extend to the south beyond the known showings. Several anomalous values were found in other places, mostly as isolated points, and no direction or continuity of anomaly can be interpreted from these at present.

The author concludes that the Earth Magnetometer can readily identify magnetite bodies at Bacon Lake, and a tightly spaced magnetometer grid survey can provide useful exploration data in areas with overburden cover.

Respectfully Submitted,

A handwritten signature in black ink, appearing to read 'Joe Paquet', written over a horizontal line.

Joe Paquet

December 10, 2009

5.0 REFERENCES

- 1) Houle, J., (undated): Bacon Lake Project, Work Proposals for Minland Resources.
- 2) Rennie, C.C., (December 2, 1997): Summary Prospecting Report on Midland Project, Bacon Lake Claims; B.C. Geological Survey Assessment Report # 25513.
- 3) Gosse, Richard R., (March 25, 1991): Ground Magnetometer Survey of the Bacon Claim; B.C. Geological Survey Assessment Report # 21193.
- 4) Brownlee, Douglas J., (July 5, 1989): Geological and Geophysical Survey of the Bacon Claims; B.C. Geological Survey Assessment Report # 18946.
- 5) Brownlee, Douglas J., (April 25, 1988): Follow-Up Lithogeochemical Survey of the Bacon Claim; B.C. Geological Survey Assessment Report # 17395.
- 6) Brownlee, Douglas J., (July 20, 1987): Preliminary Reconnaissance and Lithogeochemical Survey of the Bacon Claim; B.C. Geological Survey Assessment Report # 16321.
- 7) McDougall, J. J., (December 21, 1961): Report on Bacon Lake Magnetite; B.C. Geological Survey Property File, 92F256-07 Bacon.
- 8) McDougall, J. J., (February 10, 1961): Report on Bacon Lake and the Willy Iron Prospects; B.C. Geological Survey Property File, 92F256-07 Bacon.
- 9) Paquet, J., Report on Trenching, Beavertail Claims, Vancouver Island British Columbia, September 9, 2009 (Mineral Titles Assessment Filing Event #4321068)
- 10) Upton, A. H., (January 31, 1952): Bacon Lake Property, B.C. Iron Ore Development Co. Ltd.; B.C. Geological Survey Property File, 92F256-07 Bacon.
- 11) Upton, A. H., (September 7, 1951): Appendix 1, B.C. Iron Ore Development Co. Ltd.; B.C. Geological Survey Property File, 92F256-07 Bacon.

APPENDIX 1**Magnetometer Survey Data**

Daily Averages	
11-Nov	556.1
13-Nov	554.0
14-Nov	551.4

<u>Date</u>	<u>Point</u>	<u>Easting</u>	<u>Northing</u>	<u>Magnetic Field Strength (mG)</u>	<u>Absolute Value of Difference in Field Strength from Daily Average (mG)</u>
11-Nov	M1	311435	5537954	551.9	4.2
11-Nov	M2	311469	5537990	558	1.9
11-Nov	M3	311500	5538017	558.5	2.4
11-Nov	M4	311539	5538035	559	2.9
11-Nov	M5	311577	5538062	557	0.9
11-Nov	M6	311598	5538079	557	0.9
11-Nov	M7	311625	5538109	554	2.1
11-Nov	M8	311628	5538118	561	4.9
11-Nov	M9	311634	5538126	564	7.9
11-Nov	M10	311637	5538136	587	30.9
11-Nov	M11	311642	5538144	632	75.9
11-Nov	M12	311647	5538147	952	395.9
11-Nov	M13	311651	5538154	440.5	115.6
11-Nov	M14	311659	5538158	1237	680.9
11-Nov	M15	311662	5538167	595.7	39.6
11-Nov	M16	311677	5538167	533.9	22.2
11-Nov	M17	311700	5538178	631.7	75.6
11-Nov	M18	311728	5538215	610.6	54.5
11-Nov	M19	311767	5538257	566.5	10.4
11-Nov	M20	311785	5538298	522.9	33.2
11-Nov	M21	311796	5538324	532.3	23.8
11-Nov	M22	311800	5538351	542.7	13.4
11-Nov	M23	311804	5538377	525.8	30.3
11-Nov	M24	311805	5538380	543	13.1
11-Nov	M25	311813	5538392	583.7	27.6
11-Nov	M26	311822	5538404	681.6	125.5
11-Nov	M27	311815	5538419	591.7	35.6
11-Nov	M28	311831	5538441	664.7	108.6
11-Nov	M29	311831	5538445	559.6	3.5
11-Nov	M30	311832	5538456	648.9	92.8
11-Nov	M31	311844	5538486	606.6	50.5
11-Nov	M32	311836	5538497	586	29.9
11-Nov	M33	311848	5538515	520.5	35.6
11-Nov	M34	311853	5538523	529.7	26.4
11-Nov	M35	311862	5538536	547.7	8.4
11-Nov	M36	311880	5538575	547	9.1
11-Nov	M37	311883	5538618	565.6	9.5

11-Nov	M38	311905	5538663	613.5	57.4
11-Nov	M39	311922	5538693	544.5	11.6
11-Nov	M40	311921	5538636	571.1	15.0
11-Nov	M41	311758	5538182	560.6	4.5
11-Nov	M42	311769	5538190	559.5	3.4
11-Nov	M43	311780	5538190	562.7	6.6
11-Nov	M44	311775	5538189	550.5	5.6
11-Nov	M45	311787	5538188	540.5	15.6
11-Nov	M46	311796	5538187	547.6	8.5
11-Nov	M47	311816	5538192	553.5	2.6
11-Nov	M48	311827	5538190	545.7	10.4
11-Nov	M49	311824	5538194	557.8	1.7
11-Nov	M50	311846	5538205	550.6	5.5
11-Nov	M51	311846	5538184	552.5	3.6
11-Nov	M52	311844	5538183	558.5	2.4
11-Nov	M53	311839	5538168	556.7	0.6
11-Nov	M54	311841	5538159	566.6	10.5
11-Nov	M55	311854	5538146	556.7	0.6
11-Nov	M56	311850	5538141	564.6	8.5
11-Nov	M57	311851	5538131	556.7	0.6
11-Nov	M58	311852	5538121	556.7	0.6
11-Nov	M59	311851	5538112	556	0.1
11-Nov	M60	311854	5538101	555.6	0.5
11-Nov	M61	311853	5538092	554.9	1.2
11-Nov	M62	311844	5538090	560.6	4.5
11-Nov	M63	311832	5538090	558.6	2.5
11-Nov	M64	311822	5538094	561.6	5.5
11-Nov	M65	311816	5538092	558.5	2.4
11-Nov	M66	311807	5538088	559.6	3.5
11-Nov	M67	311792	5538090	558.9	2.8
11-Nov	M68	311784	5538090	561.8	5.7
11-Nov	M69	311771	5538090	561.3	5.2
11-Nov	M70	311764	5538090	448	108.1
11-Nov	M71	311753	5538084		
13-Nov	M72	311738	5538166	551.7	2.3
13-Nov	M73	311742	5538163	546	8.0
13-Nov	M74	311736	5538151	553	1.0
13-Nov	M75	311739	5538100	556.7	2.7
13-Nov	M76	311755	5538092	559.2	5.2
13-Nov	M77	311749	5538094	561.7	7.7
13-Nov	M78	311744	5538125	558.5	4.5
13-Nov	M79	311753	5538108	549.5	4.5
13-Nov	M80	311754	5538097	691.1	137.1
13-Nov	M71 repeat	311758	5538082	543.7	10.3
13-Nov	M81	311749	5538082	596	42.0
13-Nov	M82	311737	5538080	621.6	67.6
13-Nov	M83	311725	5538080	554.6	0.6
13-Nov	M84	311715	5538080	548.6	5.4
13-Nov	M85	311705	5538080	535.9	18.1
13-Nov	M86	311704	5538079	689.2	135.2

13-Nov	M87	311693	5538073	601.8	47.8
13-Nov	M88	311684	5538070	546.5	7.5
13-Nov	M89	311670	5538068	547.1	6.9
13-Nov	M90	311656	5538068	548.6	5.4
13-Nov	M91	311647	5538068	552.6	1.4
13-Nov	M92	311647	5538063	555.7	1.7
13-Nov	M93	311638	5538080	552.6	1.4
13-Nov	M94	311629	5538081	554.5	0.5
13-Nov	M95	311607	5538080	550.7	3.3
13-Nov	M96	311647	5538029	555.7	1.7
13-Nov	M97	311664	5538035	554.8	0.8
13-Nov	M98	311663	5538038	591.5	37.5
13-Nov	M99	311683	5538039	554.8	0.8
13-Nov	M100	311691	5538045	573.7	19.7
13-Nov	M101	311701	5538045	552.5	1.5
13-Nov	M102	311707	5538046	563.5	9.5
13-Nov	M103	311714	5538055	584.7	30.7
13-Nov	M104	311724	5538054	760.6	206.6
13-Nov	M105	311740	5538049	564.7	10.7
13-Nov	M106	311743	5538060	515.6	38.4
13-Nov	M107	311752	5538062	484.6	69.4
13-Nov	M108	311761	5538064	523.7	30.3
13-Nov	M109	311770	5538071	544.8	9.2
13-Nov	M110	311780	5538072	554.7	0.7
13-Nov	M111	311788	5538071	562.6	8.6
13-Nov	M112	311798	5538053	556.7	2.7
13-Nov	M113	311790	5538054	540.7	13.3
13-Nov	M114	311777	5538044	548.5	5.5
13-Nov	M115	311768	5538042	548.3	5.7
13-Nov	M116	311758	5538041	564.4	10.4
13-Nov	M117	311753	5538037	573.7	19.7
13-Nov	M118	311743	5538037	606.7	52.7
13-Nov	M119	311736	5538029	837.5	283.5
13-Nov	M120	311728	5538023	563.5	9.5
13-Nov	M121	311715	5538019	561.4	7.4
13-Nov	M122	311706	5538016	565.7	11.7
13-Nov	M123	311695	5538014	564.3	10.3
13-Nov	M124	311691	5538009	556.8	2.8
13-Nov	M125	311681	5538006	551.7	2.3
13-Nov	M126	311671	5537997	555.3	1.3
13-Nov	M127	311662	5537997	555.5	1.5
13-Nov	M128	311655	5537996	556.7	2.7
13-Nov	M129	311661	5538079	545	9.0
13-Nov	M130	311650	5538087	540.5	13.5
13-Nov	M131	311651	5538125	525.3	28.7
13-Nov	M132	311646	5538128	513.2	40.8
13-Nov	M133	311642	5538127	514.5	39.5
13-Nov	M134	311656	5538135	598.5	44.5
14-Nov	M135	311652	5538168	722.7	171.3
14-Nov	M136	311642	5538175	416.5	134.9

14-Nov	M137	311644	5538185	1159	607.6
14-Nov	M138	311642	5538191	1496.5	945.1
14-Nov	M139	311642	5538197	667.8	116.4
14-Nov	M140	311643	5538209	1222.5	671.1
14-Nov	M141	311641	5538222	710.8	159.4
14-Nov	M142	311641	5538231	502.9	48.5
14-Nov	M143	311640	5538240	544.7	6.7
14-Nov	M144	311641	5538249	498.4	53.0
14-Nov	M145	311638	5538259	522.8	28.6
14-Nov	M146	311638	5538269	520.6	30.8
14-Nov	M147	311641	5538280	544	7.4
14-Nov	M148	311628	5538283	547.8	3.6
14-Nov	M149	311615	5538284	546.4	5.0
14-Nov	M150	311648	5538278	538.7	12.7
14-Nov	M151	311656	5538288	522.5	28.9
14-Nov	M152	311663	5538276	602.6	51.2
14-Nov	M153	311675	5538270	575.3	23.9
14-Nov	M154	311686	5338275	591.8	40.4
14-Nov	M155	311637	5538296	547.8	3.6
14-Nov	M156	311632	5538311	548.7	2.7
14-Nov	M157	311632	5538300	547.5	3.9
14-Nov	M158	311646	5538313	547.6	3.8
14-Nov	M159	311656	5538312	548.6	2.8
14-Nov	M160	311666	5538318	546.7	4.7
14-Nov	M161	311677	5538316	539.7	11.7
14-Nov	M162	311681	5538307	536.8	14.6
14-Nov	M163	311683	5538319	525.8	25.6
14-Nov	M164	311690	5538320	529.2	22.2
14-Nov	M165	311702	5538318	525	26.4
14-Nov	M166	311711	5538323	519.7	31.7
14-Nov	M167	311722	5538327	520.4	31.0
14-Nov	M168	311736	5538283	559.7	8.3
14-Nov	M169	311735	5538273	583.3	31.9
14-Nov	M170	311733	5538263	521.8	29.6
14-Nov	M171	311734	5538254	568.7	17.3
14-Nov	M172	311734	5538246	544.6	6.8
14-Nov	M173	311740	5538239	529.6	21.8
14-Nov	M174	311740	5538226	544.5	6.9
14-Nov	M175	311750	5538211	557.3	5.9
14-Nov	M176	311736	5538210	575.5	24.1
14-Nov	M177	311732	5538189	560.7	9.3
14-Nov	M41 repeat	311736	5538180	553.7	2.3
14-Nov	M178	311749	5538140	559.7	8.3
14-Nov	M179	311745	5538135	570.6	19.2
14-Nov	M180	311728	5538124	576.6	25.2
14-Nov	M181	311720	5538133	625.9	74.5
14-Nov	M182	311710	5538136	560.6	9.2
14-Nov	M183	311700	5538129	542.6	8.8
14-Nov	M184	311691	5538130	535.5	15.9
14-Nov	M185	311680	5538126	461.8	89.6

14-Nov	M186	311663	5538131	355.7	195.7
14-Nov	M187	311634	5538132	553.4	2.0
14-Nov	M188	311639	5538182	713.5	162.1
14-Nov	M189	311624	5538175	546.5	4.9
14-Nov	M190	311617	5538179	551.7	0.3
14-Nov	M191	311655	5538172	559.6	8.2
14-Nov	M192	311664	5538170	584.4	33.0
14-Nov	M193	311675	5538177	613.6	62.2
14-Nov	M194	311692	5538183	524.8	26.6
14-Nov	M195	311686	5538184	579.7	28.3
14-Nov	M196	311699	5538180	548	3.4
14-Nov	M197	311708	5538180	559.6	8.2
14-Nov	M198	311718	5538186	586.8	35.4
14-Nov	M199	311727	5538185	561.5	10.1
14-Nov	M200	311747	5538226	582.7	31.3
14-Nov	M201	311733	5538224	730.8	179.4
14-Nov	M202	311724	5538229	537.7	13.7
14-Nov	M203	311710	5538249	612.5	61.1
14-Nov	M204	311706	5538239	592.5	41.1
14-Nov	M205	311690	5538238	623.6	72.2
14-Nov	M206	311678	5538236	541.7	9.7
14-Nov	M207	311666	5538234	552.4	1.0
14-Nov	M208	311657	5538232	615.5	64.1
14-Nov	M209	311633	5538230	527.5	23.9
14-Nov	M210	311621	5538230	539.7	11.7
14-Nov	M211	311608	5538229	544.8	6.6

APPENDIX 2**SCHEDULE OF EXPLORATION EXPENSES**

Ian Macleod - November 9, 2009 to November 14, 2009		
	\$300 per day for 6 days on site (mag survey/prospecting)	\$1,800.00
	- Food	\$236.80
	- Accommodation	\$511.72
Ron McIntyre, P.Geo - November 9, 2009 to November 15, 2009		
	\$600 per days for 6 days on site (mag survey/prospecting)	\$3,600.00
	- Food	\$183.31
	- Accommodation	\$511.72
	- Travel	\$667.01
Joe Paquet	- November 8, 2009 to November 15, 2009	
	- 6 days @ \$400 per day Management/Prospecting	\$2,400.00
	- Travel/transportation	\$269.10
	- Food	\$20.93
K James	November 9, 2009 – November 10, 2009 Accommodation only (helped out with grid)	\$167.24
A Woods Bulldozing	- November 12, 2009 to November 13, 2009 Trenching/Reclamation (Tenure 592276)	\$2,423.53
Assay	Pending Assays (Submitted to lab September 9, 2009) (Pending Samples and costs from Event # 4321068) Tenure 592276	\$899.29
Miscellaneous	Magnetometer/Storage	\$331.25
Ian Macleod	- CAD and data handling	\$1,422.68
Report		\$800.00
Total		\$16,244.58

APPENDIX 3

Beavertail Assays

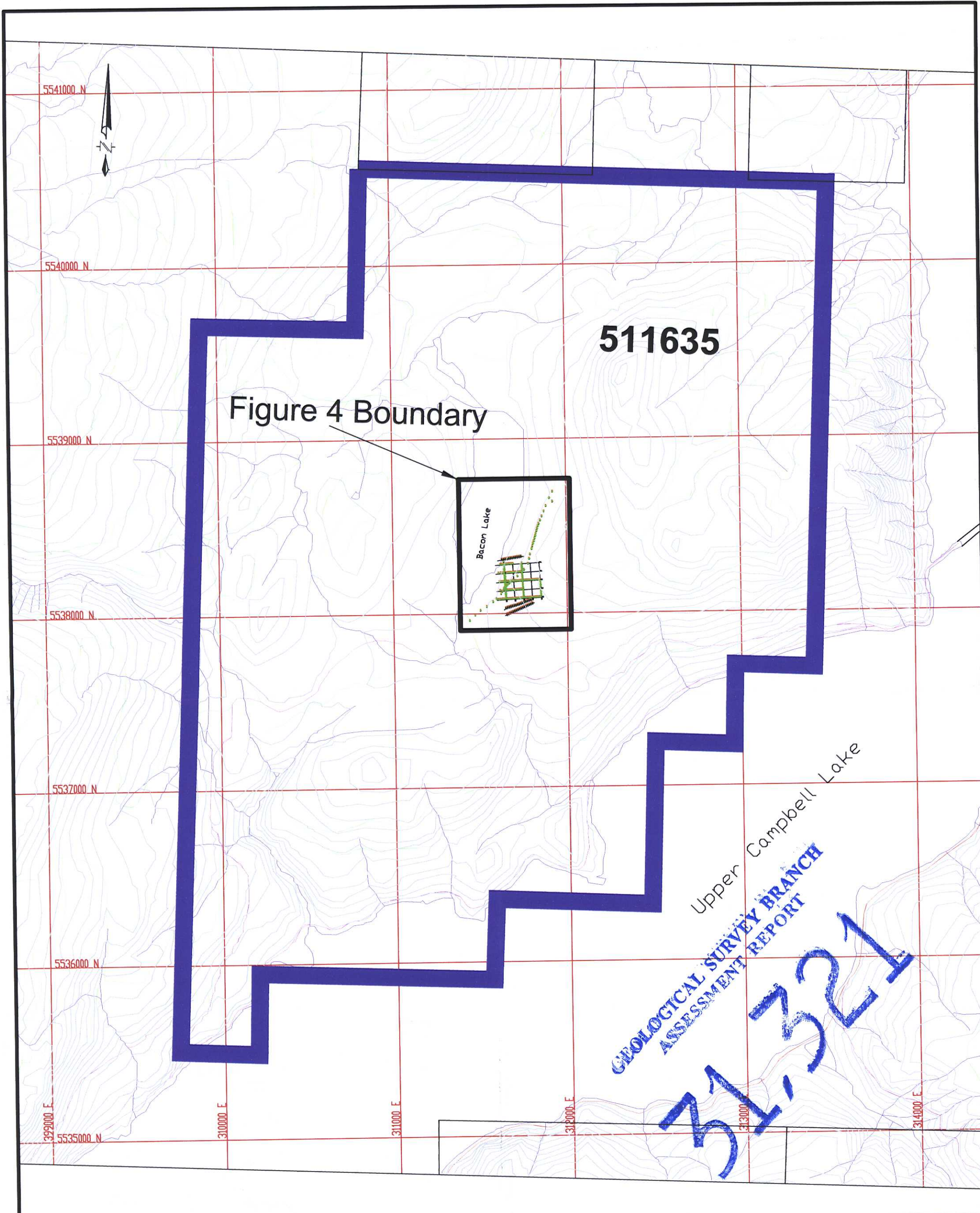
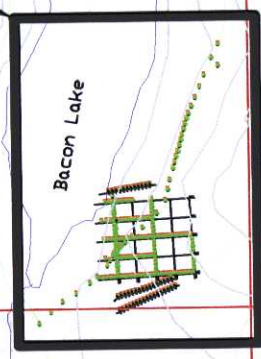


Figure 4 Boundary

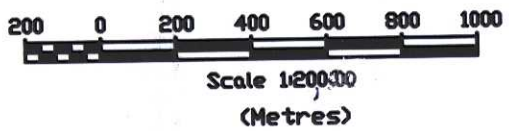
511635



Upper Campbell Lake
GEOLOGICAL SURVEY BRANCH
ASSESSMENT REPORT
511635

LEGEND:

- ROADS**
- Forestry
 - Forestry (Unknown)
 - Culverts
 - Bridges
 - Cross Ditches
- Claim Boundary
 - Streams and Lake Boundaries
 - Topographic Contour



Note: Coordinate Grid is in UTM NAD83 Zone 10.

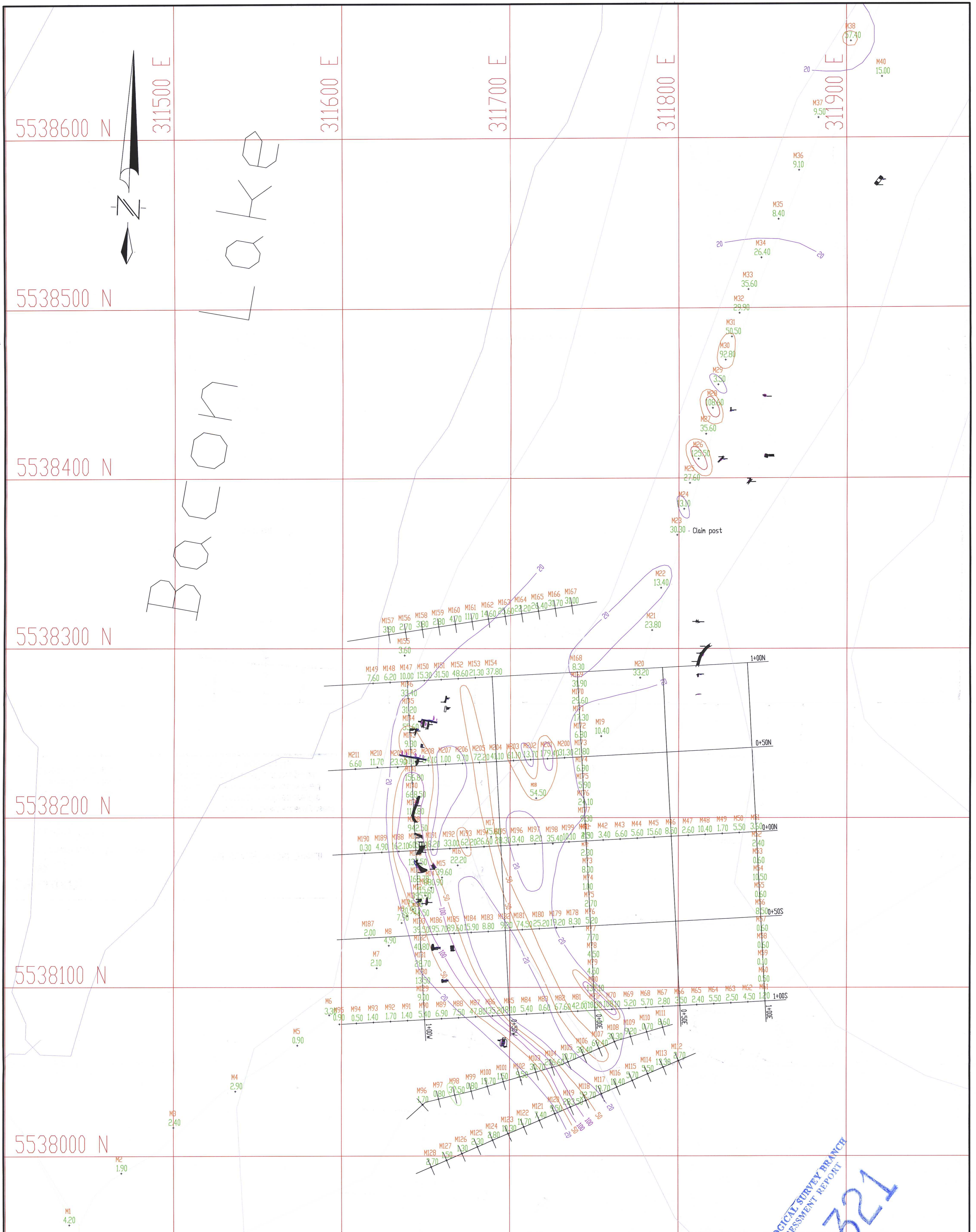
Western Gateway Minerals Inc

Bacon Lake Property

Preliminary Magnetometer Survey

Figure 1b
Key Map

June 17th, 2010.
DRAWN BY: K.J.



LEGEND:

- M87 Station
- 2.40 Magnetometer Value mG
- Contour 20 mG
- Contour 50 mG
- Contour 100 mG
- Forestry Road or Trail
- Topographic Contour
- Stream or Lake Shore

GPS Surveyed Old Trench

Note: The units of measurement posted for the magnetometer values are the Absolute Value of Difference in Field Strength from the Daily Average as measured in milligauss (mG).



Scale 1:1000
(Metres)

Note: Coordinate system is NAD83 UTM Zone 10

Western Gateway Minerals Inc

Bacon Lake Property

Preliminary Magnetometer Survey

Figure 4

June 17th, 2010.

DRAWN BY: K.J.