

2009 - 2010

PROSPECTING REPORT

“Opal Summit Property”

EVENT # 4470998 TENURE # 599585

Tenure Name: Opal Summit

**Lytton / Shaw Springs Region
Kamloops Mining Division
Map 092I**

Coordinate Reference

121° 20' 09.8" W Longitude – 50° 17' 59.6" N Latitude

report by

William Larry Amey

FMC 145191

May 8, 2010

INDEX

Page	i.....	Copy of Tenure Renewal
	1.....	Cover Page
	2.....	Index
	3.....	Introduction & Location / Access / Summary & Conclusion
	4.....	Work Record / Evaluation of Work & Cost Statement / Attending Parties & Qualifications / Affidavit
	5.....	General Location Reference - Map 1
	6.....	Prospected Area/s - Map 2
	7.....	Contour Map - Map 3

Note: Unless otherwise referenced, map submissions are enhanced excerpts from the BC Ministry's Provincial Mapping System. Scale as that shown.

Introduction & Location

The Opal Summit property, tenure # 599584, an 8 cell mineral claim comprising 165.12 hectares, is situate 19.5 kilometres east-northeast of Lytton, or otherwise 100 kilometres north of Hope. The tenure is one of five held in the same locale by the author, which envelopes a portion of a mountain peak known for the occurrence of banded agate, however, through personal communication it was learned that opal had also been found along this range. The area is semi-arid and underlain by Middle and Upper Cretaceous Spence's Bridge Group volcanics.

Access

Access to the Opal Summit property is gained via a FSR located approximately 19.5 kilometres North of Lytton, along BC Highway #1. Immediately adjacent to a gravel pit located alongside Highway #1, at coordinate 121° 23' 32.9" W, Longitude, 50° 17' 38.2" N Latitude, the aforementioned FSR leads eastward, southward thence eastward again. At a distance of approximately 5.6 kilometres from the highway, at coordinate 121° 21' 51.2" W, Longitude, 50° 16' 41.7" N Latitude, a branch road intersecting from the north is then taken. Such road then graduates upslope for a distance of 2.3 kilometres in a north by northwest direction to where it then forks. Following the right fork for a further 0.47 kilometres, it then intersects with the western boundary line of the tenure, at longitude coordinate 121° 21' 51.2" W. In total, by road, the tenure lies an aggregate distance of approximately 8.95 kilometres from the highway.

Summary & Conclusion

Reconnaissance prospecting was carried out on the Opal Summit property over two consecutive days. On both occasions, along the traverses indicated on Map 2, hereto attached. General prospecting entailed examining the area for outcrops and other near surface bedrock. Several random hand dug excavations were effected to depths up to 50 centimetres, for examining the soil's composition and for any rock fragments indicative of agate and opal mineralization. In result, the hand excavations failed to unearth anything of interest. There were, however, what appeared as two areas excavated by machine, which had exposed samples of feldspar comprising a medium to dark biotite. No samples were desired from either of these older excavations. Along the southeastern sector of the tenure the physiography slopes as it extends to the upper extremities of the cliff, where nine quality specimens of white, yellowish- white and gray banded agate were recovered during further shallow excavations. Subject to observations made along the southeast sector of the claim, it appears there may be a cross-fault or bedrock fracture bearing 285°.

The tenure was renewed to facilitate continued prospecting for the reported opal, and, for fully evaluating the extent of the agate potential.

Work Evaluation & Cost Statement

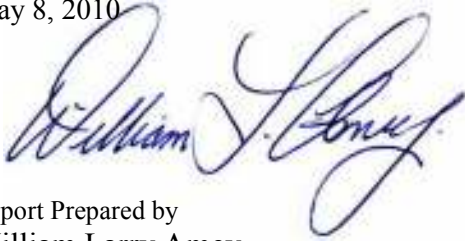
-- 20.0 Man Hours Prospecting --

Labor –	Sep 3 rd & 4 th 2009	10.0 hours	\$ 200.00
Dave Chamberlain			
Supervisory –	Sep 3 rd & 4 th 2009	10.0 hours	\$ 300.00
Larry Amey			
		Total Work Credits	\$ 500.00
Meal Costs			\$ 67.00
Accommodations			\$ 140.00
		Sub Total	\$ 707.00
Allowable Vehicle Expenses (20%)			\$ 141.40
Report Preparation			\$ 100.00
		Total	\$ 948.40

Attending Parties & Qualifications:

Dave Chamberlain -- 5 years prospecting experience
Larry Amey -- 30 years prospecting experience

May 8, 2010



Report Prepared by
William Larry Amey
145191

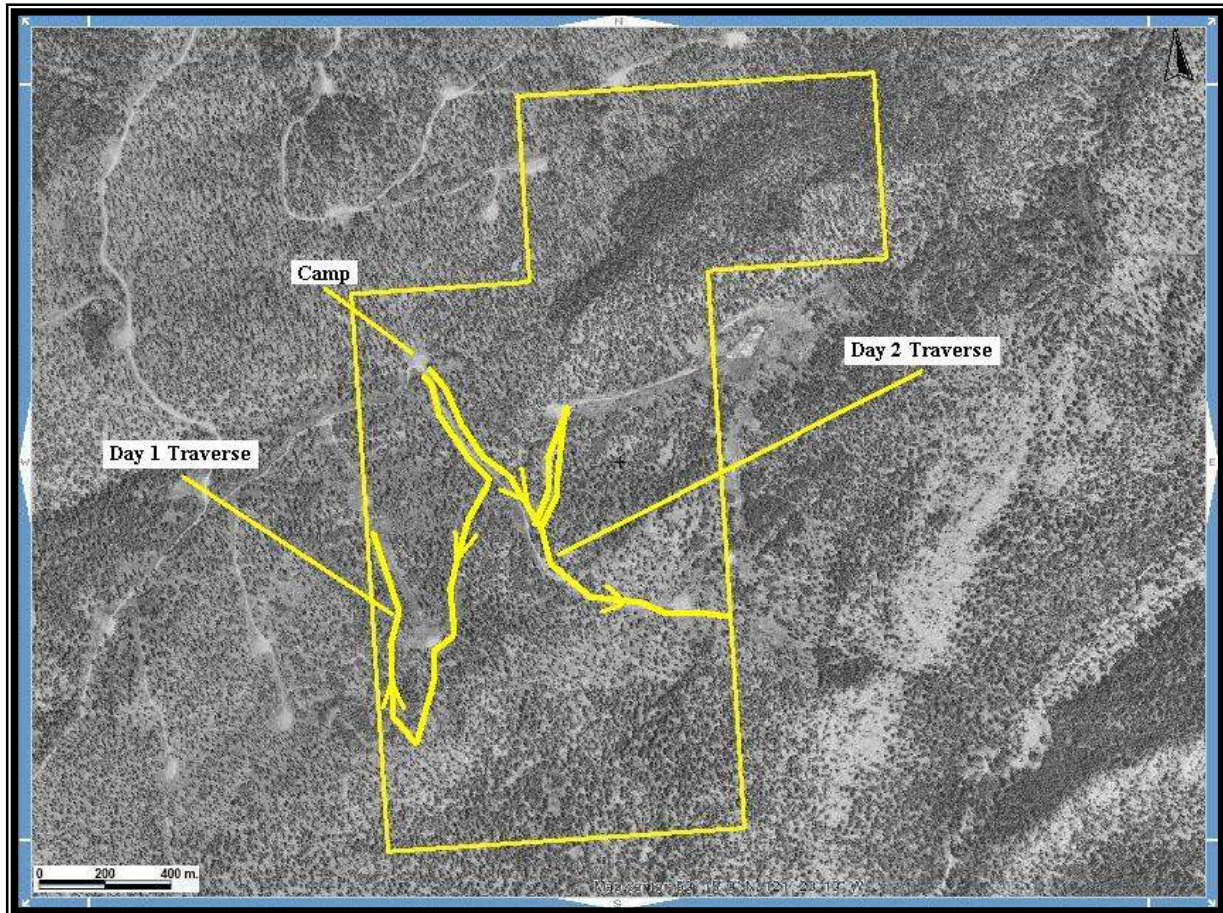
REFERENCE MAP 1

Geographical Location



REFERENCE MAP 2

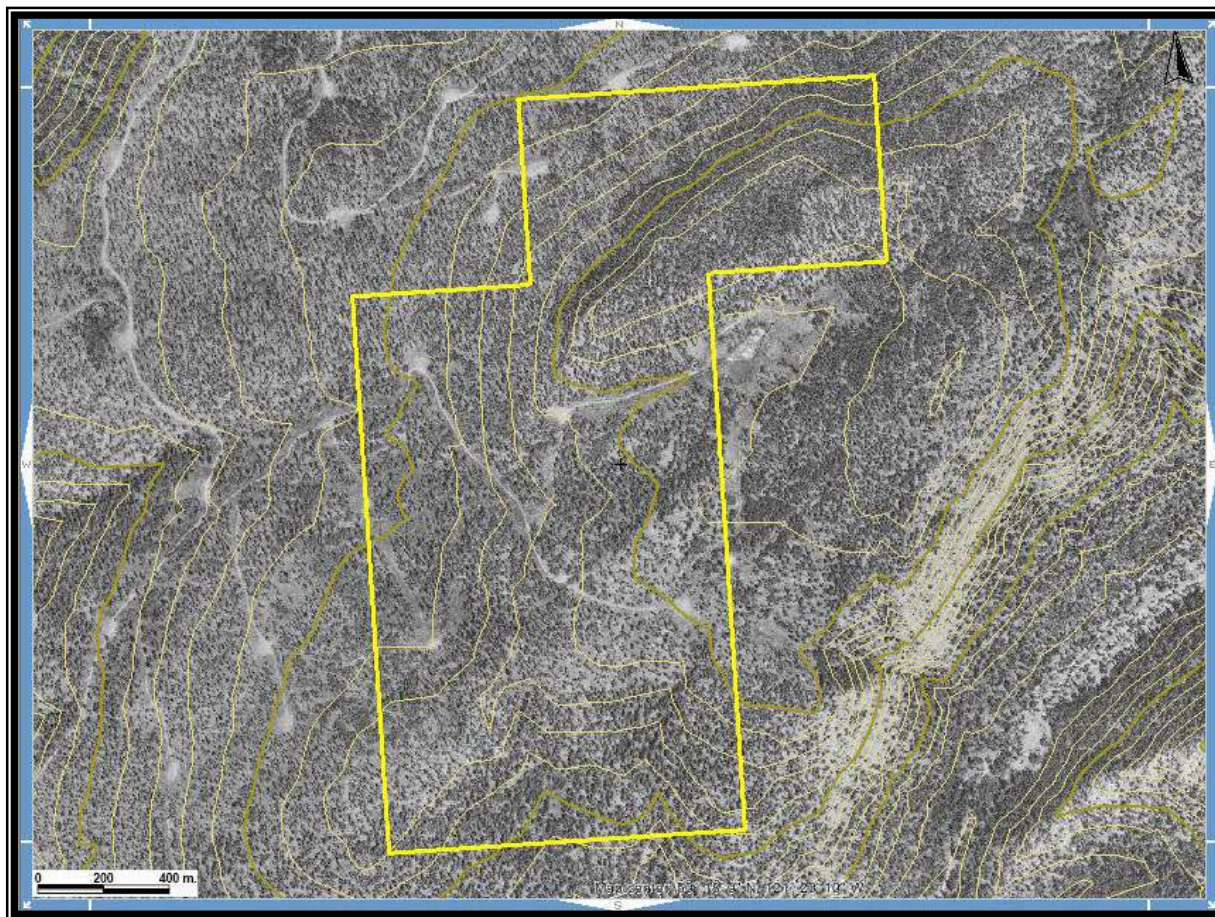
Area of Work



Scale 1: 10,000
Map 092I Excerpt
Tenure Coordinate Reference
121° 20' 09.8" W Longitude – 50° 17' 59.6" N Latitude

REFERENCE MAP 3

Contour Map of Tenure Area



Scale 1: 10,000

Map 092I Excerpt

Tenure Coordinate Reference

121° 20' 09.8" W Longitude - 50° 17' 59.6" N Latitude