

**BC Geological Survey  
Assessment Report  
31593**

**2009 - 2010**

**PROSPECTING REPORT  
“Opal Three Property”**

**EVENT # 4658791      TENURE # 605238**

**Tenure Name: Opal Three**

**Lytton / Shaw Springs Region  
Kamloops Mining Division  
Map 092I**

**Coordinate Reference**

**121° 19' 1" W Longitude – 50° 18' 15" N Latitude**

*report by*

**William Larry Amey  
FMC 145191  
July 20, 2010**

## INDEX

Page	i.....	Copy of Tenure Renewal
	1.....	Cover Page
	2.....	Index
	3.....	Introduction & Location / Access / Previous Work / Summary / Conclusion
	4.....	Work Record / Evaluation of Work & Cost Statement / Attending Parties & Qualifications / Affidavit
	5.....	General Location Reference - Map 1
	6.....	Claim Access via Spur FSR - Map 2
	7.....	Prospected Area/s - Map 3
	8.....	Contour Map - Map 4

**Note: Unless otherwise referenced, map submissions are enhanced excerpts from the BC Ministry's Provincial Mapping System. Scale as that shown.**

## **Introduction & Location**

The Opal Three property, tenure # 605238, a six cell mineral claim comprising 123.8 hectares, is situate 19.5 kilometres east-northeast of Lytton, or otherwise 100 kilometres north of Hope. The tenure is one of five properties held in the same locale by the author, which envelopes a mountain peak known for the occurrence of banded agate, with potential for opal. The area is semi-arid and underlain by Middle and Upper Cretaceous Spence's Bridge Group volcanics.

## **Access**

Access to the Opal Three property is gained via a FSR leading southeasterly from BC Highway #1, approximately 19.5 kilometres North of Lytton. The exact location of said roadway lies immediately adjacent to a gravel pit, located at coordinate 121° 23' 32.9" W, Longitude, 50° 17' 38.2" N Latitude. The aforementioned FSR then leads eastward, southward, thence eastward again, of which its course is then followed for a distance of approximately 5.6 kilometres, to where a spur road merges from the north. Said spur road is then taken for an approximate distance of four kilometres to where it then intersects with the claim's southwest boundary, as illustrated on Map 2, hereto attached. Though navigable with a 2WD vehicle, 4WD or a quad is the recommended, with quad holding the advantage of off-road use.

## **Summary**

Prospecting on the Opal Three property was conducted over a two-day window, by a party of four. On the first work date noted, attention was focused toward accessing the extreme southeast corner of the claim (that situate in the western half of the property) which overlies the sheer rock face below - - such area is identified as 'Liberation Area' on Map 3. hereto attached, where after loose rock material along the exposed face was then liberated and left to fall to the bluff's base, by means of working ropes weighted with ten-pound gymnastic weights. The second phase of the Opal Three operations centered around the collection of freshly liberated specimens along the slope below, identified on Map 3 as 'Recovery Area'. Though the actual recovery point where the specimens were retrieved from was situate on two other tenures held by the author, the materials did, however, originate from the Opal Three tenure.

## **Conclusion**

Slightly under ½ kilo of freshly liberated agate specimens, along with 325 grams of naturally liberated samples, were retrieved from the previously noted 'Recovery Area.' Color and quality varied moderately, with eight of the smaller specimens being of above-average and attractable for the avid agate collector.

To enable further study and evaluate of the area's agate occurrences, and the process or processes under which the deposit was formed, the claim was renewed for a further term. Pending the results of further work, a small trenching program may be considered to evaluate if the property might be worthy to serve as a fee-based recreational Agate collection site.

**Work Evaluation & Cost Statement**

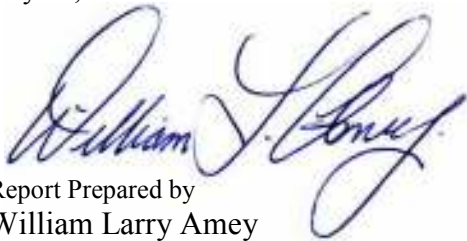
-- 14.0 Man Hours Prospecting --

Labor – Dave Chamberlain.....	Aug 1 <sup>st</sup> & 2nd, 2009	3.5 hours	\$ 70.00
Labor – Zach Amey.....	Aug 1 <sup>st</sup> & 2nd, 2009	3.5 hours	\$ 70.00
Labor – Bert Amey.....	Aug 1 <sup>st</sup> & 2nd, 2009	3.5 hours	\$ 70.00
Supervisory – Larry Amey.....	Aug 1 <sup>st</sup> & 2nd, 2009	3.5 hours	\$ 105.00
Larry Amey			
			<b>Total Work Credits</b>
			\$ 315.00
Meal Costs .....	1/3 (shared)		\$ 51.66
Accommodations .....	1/3 (shared)		\$ 93.33
			<b>Sub Total</b>
			\$ 459.99
<b>Allowable Vehicle Expenses (20%)</b>			\$ 92.00
<b>Report Preparation</b>			\$ 100.00
			<b>Total</b>
			\$ 651.99

**Attending Parties & Qualifications:**

Dave Chamberlain -- 5 years prospecting experience  
 Zach Amey -- 5 years prospecting experience  
 Bert Amey -- 5 years prospecting experience  
 Larry Amey -- 30 years prospecting experience

July 20, 2010



Report Prepared by  
 William Larry Amey  
 145191

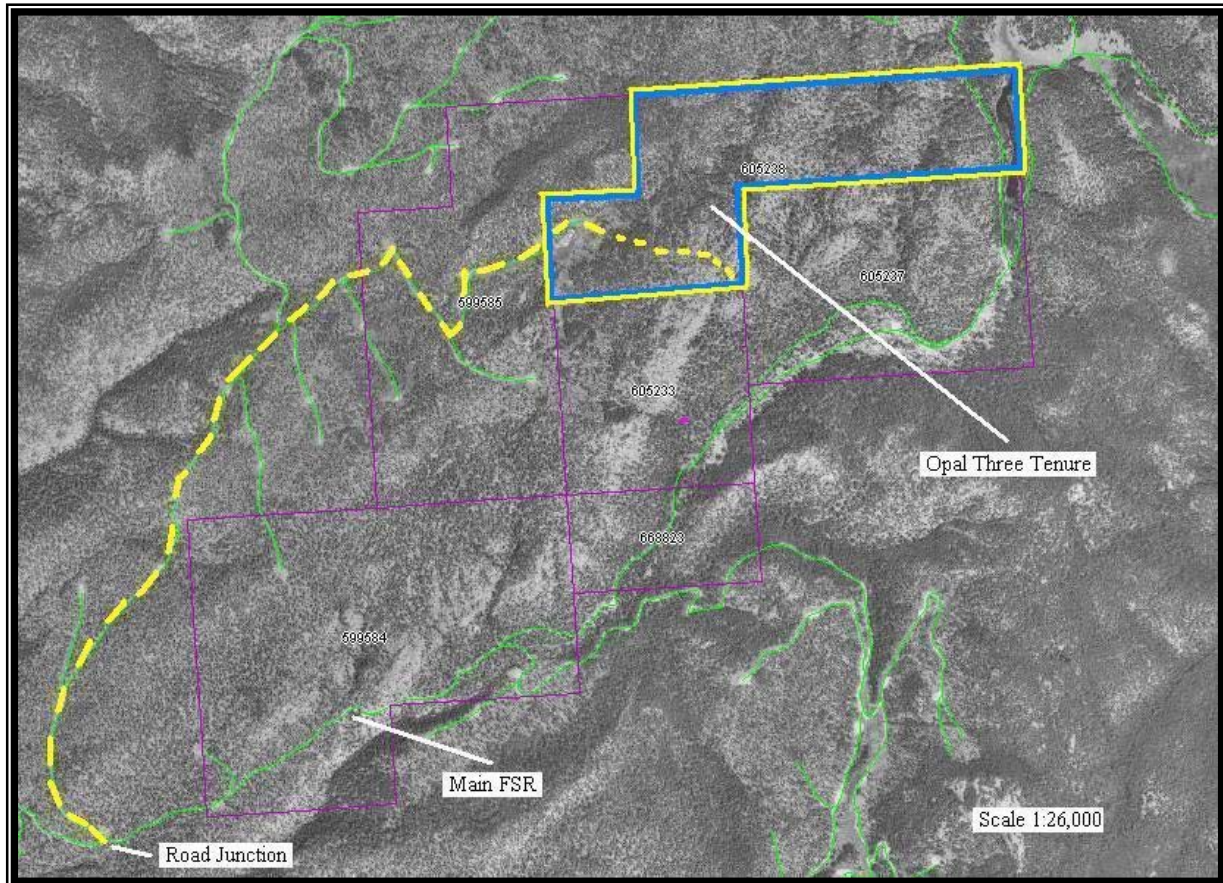
# REFERENCE MAP 1

## Geographical Location



## REFERENCE MAP 2

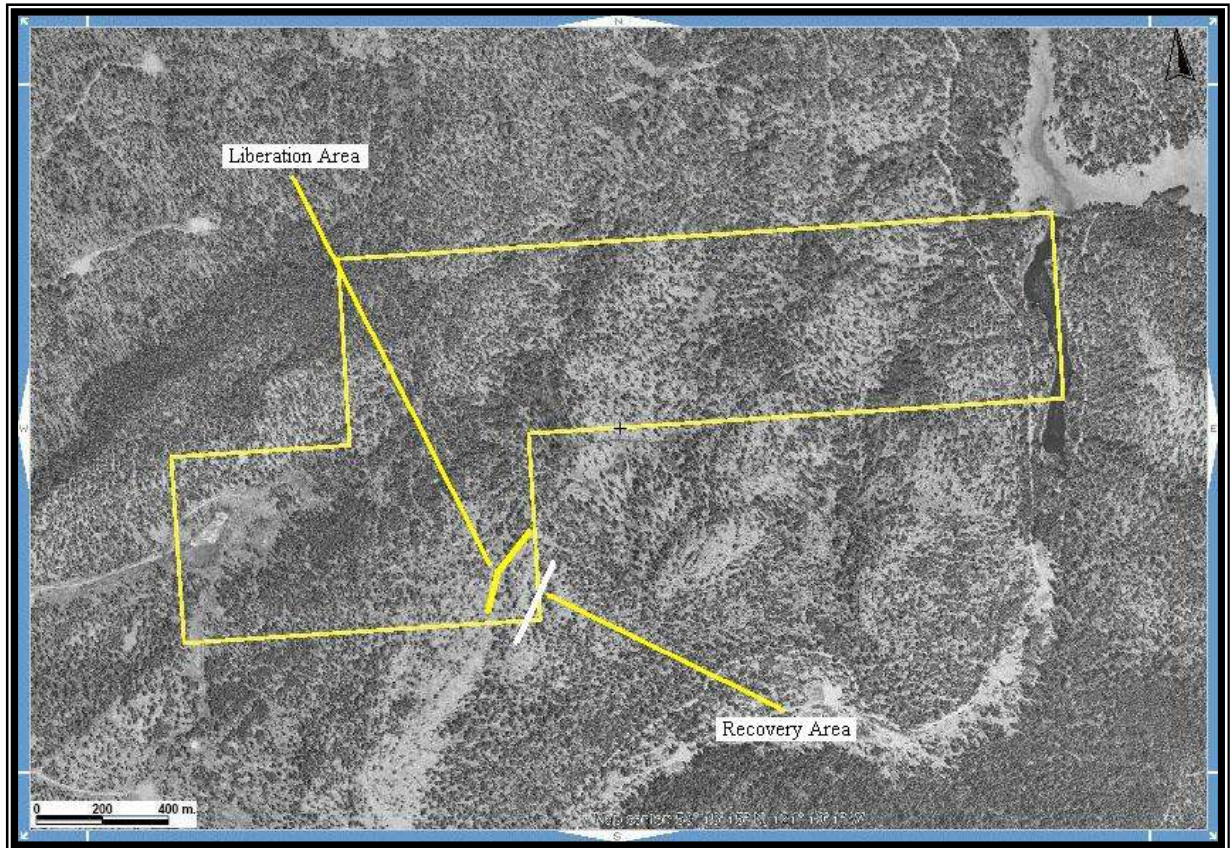
### Claim Access FSR



Scale 1: 26,000

**REFERENCE MAP 3**

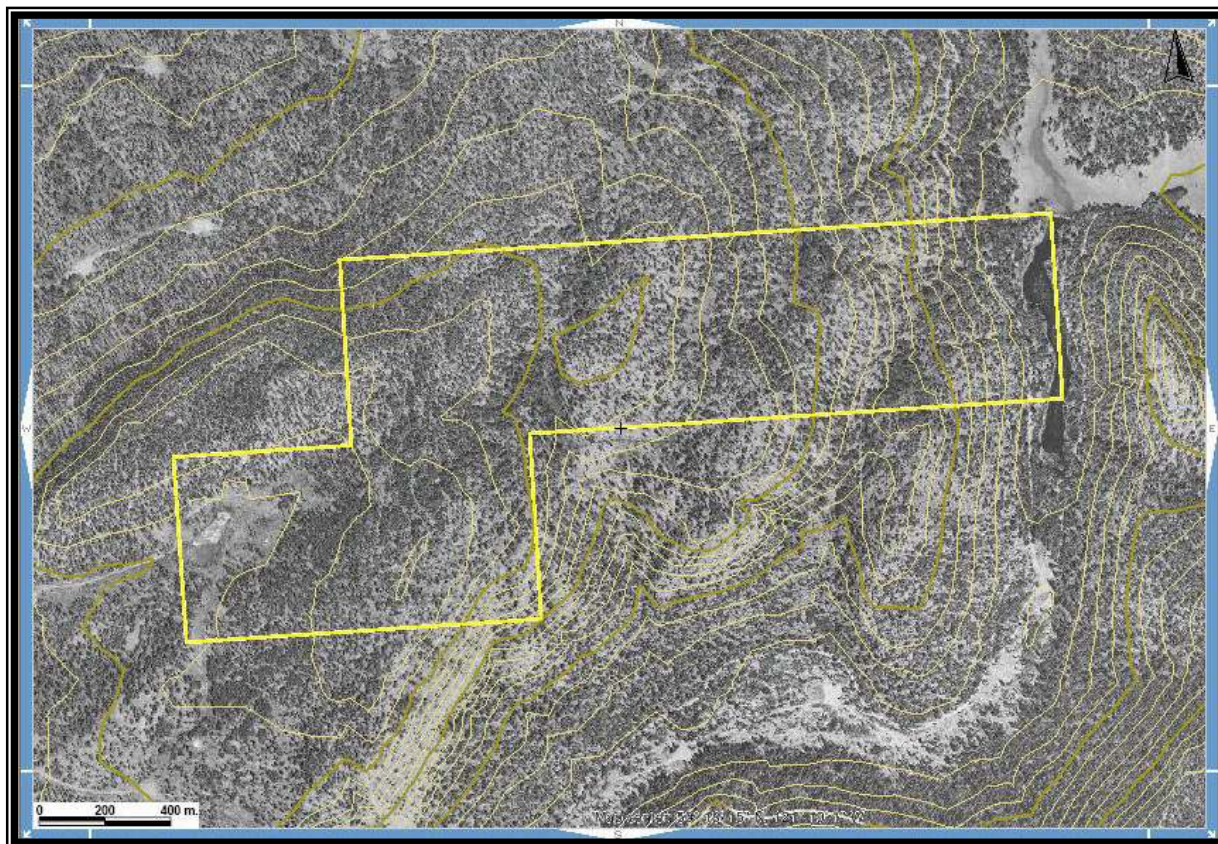
**Area of Work**



**Scale 1: 10,000**  
**Map 092I Excerpt**  
**Tenure Coordinate Reference**  
**121° 19' 1" W Longitude – 50° 18' 15" N Latitude**

**REFERENCE MAP 4**

**Contour Map of Tenure Area**



**Scale 1: 10,000**  
**Map 0921 Excerpt**  
**Tenure Coordinate Reference**  
**121° 19' 1" W Longitude – 50° 18' 15" N Latitude**