

**BC Geological Survey
Assessment Report
31594**

2009 - 2010

**PROSPECTING REPORT
“Opal Two Property”**

EVENT # 4658811 TENURE # 605237

Tenure Name: Opal Two

**Lytton / Shaw Springs Region
Kamloops Mining Division
Map 092I**

Coordinate Reference

121° 18' 38.3" W Longitude – 50° 17' 59.5" N Latitude

report by

**William Larry Amey
FMC 145191
July 17, 2010**

INDEX

Page	i.....	Copy of Tenure Renewal
	1.....	Cover Page
	2.....	Index
	3.....	Introduction & Location / Access / Previous Work / Summary / Conclusion
	4.....	Work Record / Evaluation of Work & Cost Statement / Attending Parties & Qualifications / Affidavit / Tenure Area Photo Insert
	5.....	General Location Reference - Map 1
	6.....	Upper Level FSR Access – Map 2
	6.....	Prospected Area/s - Map 3
	7.....	Contour Map - Map 4

Note: Unless otherwise referenced, map submissions are enhanced excerpts from the BC Ministry's Provincial Mapping System. Scale as that shown.

Introduction & Location

The Opal Two property, tenure # 605237, a six cell mineral claim comprising 123.84 hectares, is situate 19.5 kilometres east-northeast of Lytton, or otherwise 100 kilometres north of Hope. The tenure is one of five properties held in the same locale by the author, which envelopes a mountain peak known for the occurrence of banded agate, with potential opal. The area is semi-arid and underlain by Middle and Upper Cretaceous Spence's Bridge Group volcanics.

Access

Access to the Opal Two property is gained via a FSR leading southeasterly from BC Highway #1, approximately 19.5 kilometres North of Lytton. The exact location of said roadway lies immediately adjacent to a gravel pit, located at coordinate 121° 23' 32.9" W, Longitude, 50° 17' 38.2" N Latitude. The aforementioned FSR then leads eastward, southward, thence eastward again, of which its course is then followed for a distance of approximately 5.6 kilometres, to where a branch road merges from the north. While the majority of the claim lies at the lower elevation levels, of which is accessed primarily from the main FSR, some 4 kilometres beyond the aforesaid junction, access to the extreme northwest corner of the tenure may be more easily gained via following said northerly spur road over the course illustrated by dotted line marking, on Map 2 (hereto attached).

Summary

Prospecting on the Opal Two property was conducted over a two-day window, by a party of four. On the first work date noted, attention was focused toward accessing the upper elevations of the northwest corner of the claim, to the area noted as the 'Liberation Area' on Map 3. Thence loose rock material along the exposed rock face was liberated and left to fall to the bluff's base, by means of working ropes weighted with ten-pound gymnastic weights. The second phase of the work program centered around the collection of freshly liberated specimens along the slope below, and from the base of another such rock face, both of which locations are also illustrated on Map 3, hereto attached. Though crude, the liberation method elected, in lack of a more sophisticated arrangement, appeared to work rather well, under the circumstances.

Conclusion

Slightly over $\frac{3}{4}$ of a kilo of freshly liberated agate specimens was recovered from the location noted on Map 3 as the 'Recovery Area.' These comprised variants of blacks, gray, oranges and creamy white to whites, of varying quality. Another 14 specimens of agate which had naturally shed from the rock face, were also recovered from this location, all of which bore similar formation traits. From the base of another knoll, as indicated in Map 3 as the 'Prospected Area,' approximately a $\frac{1}{2}$ kilogram of further agate samples were recovered. These too bore similar geology as that of the foresaid location. All specimens were pooled and later examined for worthiness of lapidary collector specimens, a few of which, were polished to example their radiant beauty. No specimens of opal were observed on the property during this work program.

Work Evaluation & Cost Statement

-- 35.5 Man Hours Prospecting --

Labor – Dave Chamberlain.....	Aug 1 st & 2nd, 2009	8.0 hours	\$ 160.00
Labor – Zach Amey.....	Aug 1 st & 2nd, 2009	8.0 hours	\$ 160.00
Labor – Bert Amey.....	Aug 1 st & 2nd, 2009	8.0 hours	\$ 160.00
Supervisory – Larry Amey.....	Aug 1 st & 2nd, 2009	8.0 hours	\$ 240.00

Larry Amey

Total Work Credits \$ 495.00

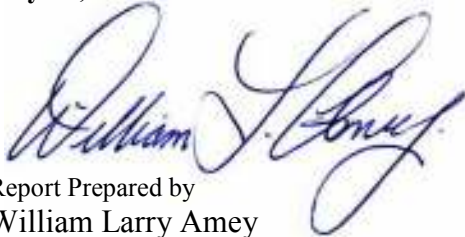
Meal Costs	1/3 (shared)	\$ 51.66
Accommodations	1/3 (shared)	\$ 93.33
	Sub Total	\$ 864.99

Allowable Vehicle Expenses (20%)		\$ 172.80
Specimen Sorting/Examination/Dressing	2x1 ³ / ₄ Hrs	\$ 70.00
Report Preparation		\$ 100.00
	Total	\$1,207.79

Attending Parties & Qualifications:

- Dave Chamberlain -- 5 years prospecting experience
- Zach Amey -- 5 years prospecting experience
- Bert Amey -- 5 years prospecting experience
- Larry Amey -- 30 years prospecting experience

July 17, 2010

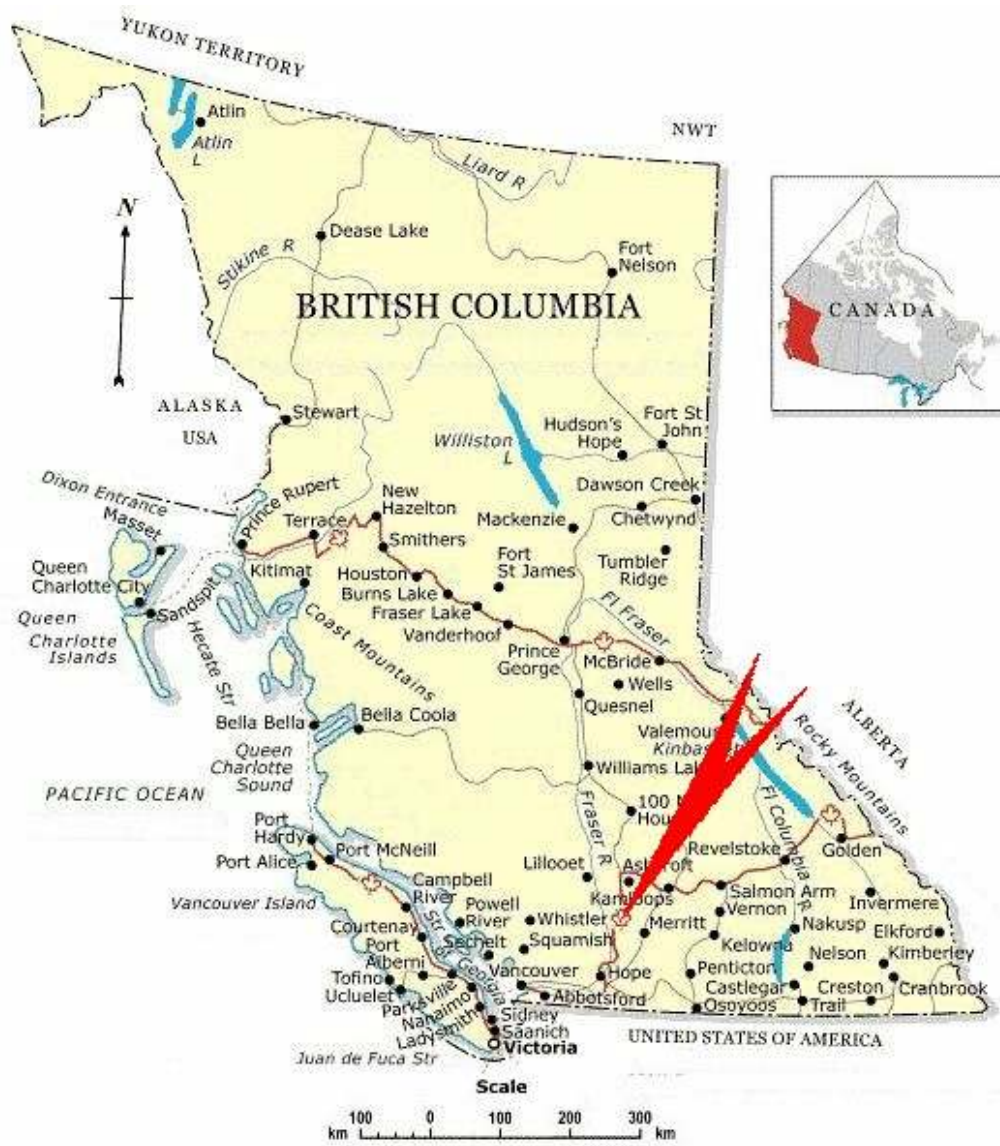


Report Prepared by
William Larry Amey
145191



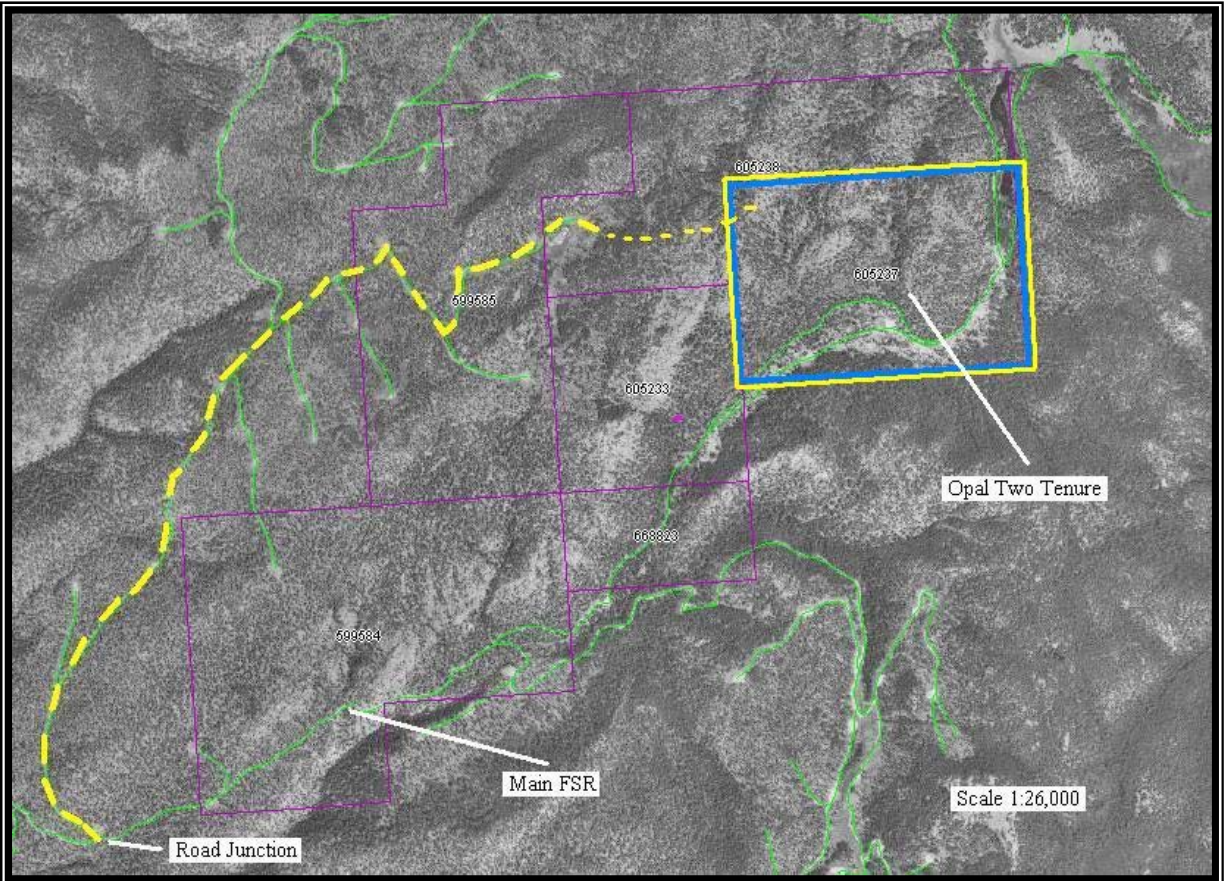
REFERENCE MAP 1

Geographical Location



REFERENCE MAP 2

Hilltop Access Route



Scale 1: 26,000

REFERENCE MAP 3

Work Areas



Scale 1: 8,000
Map 092I Excerpt
Tenure Coordinate Reference
121° 18' 38.3" W Longitude – 50° 17' 59.5" N Latitude

REFERENCE MAP 4

Contour Map of Tenure Area



Scale 1: 8,000

Map 092I Excerpt

Tenure Coordinate Reference

121° 18' 38.3" W Longitude – 50° 17' 59.5" N Latitude