

BC Geological Survey
Assessment Report
31614

MS PEG PROPERTY
ROCK GEOCHEMISTRY REPORT
FORT STEELE MINING DIVISION
NTS 08ZF.010
URM 54997000N - 565000E
C. Kennedy July 200

31614

**ASSESSMENT REPORT
PROSPECTING PROGRAM**

**MS PEG PROPERTY
FORT STEELE MINING DIVISION**

N.T.S. MAP SHEET 082F.070

UTM COORDINATES 54997000N – 565000E

Work Performed Summer – Fall 2009

OWNER
Sara Kennedy
2290 Dewolfe Ave.
Kimberley BC V1A 1P5

REPORT BY
Craig Kennedy
Prospector
2290 Dewolfe Ave.
Kimberley BC V1A 1P5

**GEOLOGICAL SURVEY BRANCH
ASSESSMENT REPORT**

31,614

July 2010

Ministry of Energy & Mines
Energy & Minerals Division
Geological Survey Branch

**ASSESSMENT REPORT
TITLE PAGE AND SUMMARY**

TITLE OF REPORT [type of survey(s)] ROCK GEOCHEMISTRY TOTAL COST 6342.47

AUTHOR(S) CRAIG KENNEDY SIGNATURE(S) Craig Kennedy

NOTICE OF WORK PERMIT NUMBER(S)/DATE(S) N/A YEAR OF WORK 2009

STATEMENT OF WORK - CASH PAYMENT EVENT NUMBER(S)/DATE(S) 4600653 Aug - Oct 2009

PROPERTY NAME MS PEG

CLAIM NAME(S) (on which work was done) MS PEG TENURE # 578756

COMMODITIES SOUGHT GOLD - TELLURUM

MINERAL INVENTORY MINFILE NUMBER(S), IF KNOWN 082FNE088 - BULLDOG

MINING DIVISION FORT STEELE NTS 082F.070

LATITUDE - ° - ' - " LONGITUDE - ° - ' - " (at centre of work)

OWNER(S) UTM COORDINATES 54997000N - 565000 E

1) SARA KENNEDY 2) _____

MAILING ADDRESS

2290 DEWOLFE AVE
KIMBERLEY B.C. VIA-1P5

OPERATOR(S) (who paid for the work)

1) CRAIG KENNEDY 2) _____

MAILING ADDRESS

2290 DEWOLFE AVE
KIMBERLEY B.C. VIA-1P5

PROPERTY GEOLOGY KEYWORDS (lithology, age, stratigraphy, structure, alteration, mineralization, size and attitude):

Sillimanite grad "domed" metamorphic complex host proterozoic pegmatite bodies with large amounts of Silica alteration. Structurally controlled quartz veins host anomalous base metals and gold mineralization

REFERENCES TO PREVIOUS ASSESSMENT WORK AND ASSESSMENT REPORT NUMBERS 13632, 14358, 23580, 24649, 25217, 31009

(OVER)

TYPE OF WORK IN THIS REPORT	EXTENT OF WORK (IN METRIC UNITS)	ON WHICH CLAIMS	PROJECT COSTS APPORTIONED (incl. support)
GEOLOGICAL (scale, area)			
Ground, mapping _____			
Photo interpretation _____			
GEOPHYSICAL (line-kilometres)			
Ground			
Magnetic _____			
Electromagnetic _____			
Induced Polarization _____			
Radiometric _____			
Seismic _____			
Other _____			
Airborne _____			
GEOCHEMICAL			
(number of samples analysed for ...)			
Soil _____			
Silt _____			
Rock _____	53 Samples	MS PEG (578756)	6342.47
Other _____			
DRILLING			
(total metres; number of holes, size)			
Core _____			
Non-core _____			
RELATED TECHNICAL			
Sampling/assaying _____			
Petrographic _____			
Mineralographic _____			
Metallurgic _____			
PROSPECTING (scale, area) _____			
PREPARATORY/PHYSICAL			
Line/grid (kilometres) _____			
Topographic/Photogrammetric (scale, area) _____			
Legal surveys (scale, area) _____			
Road, local access (kilometres)/trail _____			
Trench (metres) _____			
Underground dev. (metres) _____			
Other _____			
TOTAL COST			6342.47

Table of Contents

	<u>Page</u>
1.00 INTRODUCTION	3
1.10 Location & Access	3
1.20 Physiography	3
1.30 History of Previous Exploration	3
2.00 ROCK GEOCHEMISTRY	6
3.00 CONCLUSION	6
4.00 STATEMENT OF EXPENDITURES	7
5.00 AUTHOR'S QUALIFICATIONS	8

List of Illustrations

Figure 1-Regional Property Location Map	4
Figure 2-Claim Location Map	5
Figure 3-Rock Geochemistry Map, Sample Location And Results	In pocket
Appendix #1 – Rock Sample Descriptions	9
appendix #2 - Acme Assays	

Ms Peg Property

ROCK GEOCHEMISTRY ASSESSMENT REPORT

Craig Kennedy

July 2010

1.00 INTRODUCTION

This report describes the initial prospecting on the Ms Peg property on the north west flank of Mathew Creek on the lower St May River. It is owned by Sara Kennedy of Kimberley BC.

1.10 LOCATION & ACCESS

The Ms Peg claim group is centered approximately 8 km west of Kimberley BC. Access to the area of interest is provided by the Bootleg mainline logging road and many spur haul roads. The property is centered at UTM coordinates 565000E and 5499700N. The elevation ranges from 1200 to 1400 meters.

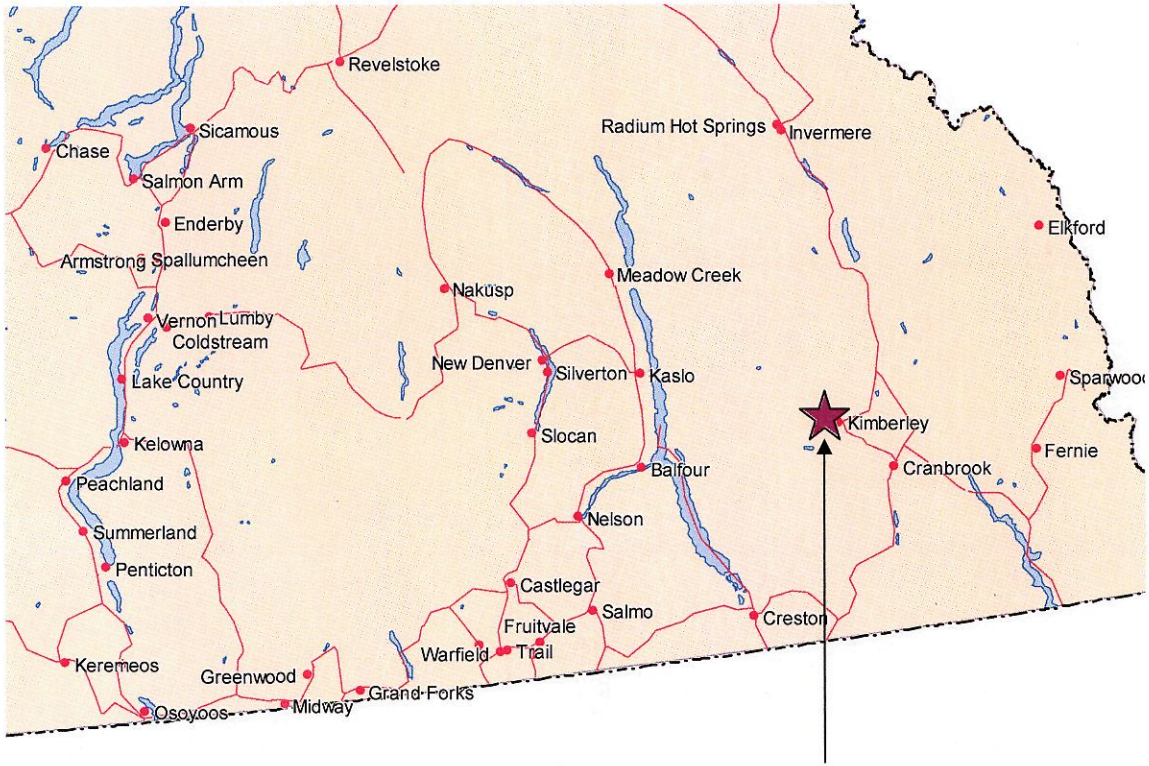
1.20 PHYSIOGRAPHY

Forest cover is mostly pine, fir and larch with multiple ages of industrial logging affecting the profile. Areas logged in the late 60's, 70's and 80's are difficult to traverse due to thick regrowth. Moderate to gentle slopes are prevalent on the property, good road access provides easy entry to the entire property.

1.30 HISTORY OF PREVIOUS EXPLORATION

The Property has one Minfile occurrence – Bulldog 082FNE088. This working was probably active during the early 1900's. Work in the late 1980's and early 1990's was mainly concerned with looking for massive sulphide "Sullivan" type deposits. (Assessment reports 13632, 14358, 23580, 24649 and 25217) Recent work has concentrated on the search for rare earth elements associated with Proterozoic pegmatites. (Assessment report 26701)

Figure 1: Regional location map



Ms Peg Property Location

2.00 ROCK GEOCHEMISTRY REPORT

Rock geochemistry has indicated the potential for economic gold mineralization on the Ms Peg property. Anomalous gold values were recovered in a number of samples assayed from the 2009 prospecting program. Follow-up work in the area of samples CK 09 – 140 and CK09 - 141 has discovered visible gold mineralization in a north west trending sheer breccia. The mineralization zone was partially hand trenched and indicates a width of 1.5 to 2.5 meters. Gold grains were seen in limonite and vugs hosting coarse yellow – green muscovite mica. The quartz veins have a definite pegmatite look and are closely associated with a tourmaline hosting narrow pegmatite body. Samples show a close association between gold and base metals (pb, cu, as) other pathfinder minerals of importance are Bi and Te.

3.00 CONCLUSION

The discovery of gold mineralization associated with quartz veins and shearing next to a pegmatite dike has opened the opportunity for an economic discovery of mineralization. Pathfinder minerals found within the gold system are evident in a number of samples away from the discovery zone. This indicates a large gold producing hydrothermal event is part of the injection process controlling quartz veins and pegmatites into the metamorphic complex. Further rock geochemistry and geology should be done on the property.

4.00 STATEMENT OF EXPENDITURES

Prospecting Program
Ms Peg Property

Work performed: Summer – Fall 2009

PROSPECTING CONTRACTORS:

Craig Kennedy, Kimberley BC 8 days @ \$500/day (includes 4X4 vehicle)	\$4000.00
Craig Kennedy - report preparation and writing 2 days @ \$350.00/day (includes typing, drafting & supplies)	700.00
53 Rock Samples @ \$30.99/ea	<u>1642.47</u>
Total:	<u>\$6342.47</u>

Craig Kennedy
Craig Kennedy
Prospector

5.00 STATEMENT OF QUALIFICATIONS

As the author of this report I, Craig Kennedy, certify that:

1. I am an independent prospector residing at 2290 Dewolfe Avenue, Kimberley, BC.
2. I have been actively prospecting in the East and West Kootenays district of BC for the past 31 years and have made my living prospecting for the past 23 years.
3. I have been employed as a professional prospector by major and junior mineral exploration companies.
4. I own and maintain mineral claims in BC and have optioned numerous claims to various exploration companies.

Craig Kennedy

Craig Kennedy
Prospector

Appendix #1 - Rock Sample Descriptions

Sample No.	UTM E	UTM N	Description	Property
CK09 - 45	565442	5500010	Flat 1m plus quartz vein with tourmaline needles - weak Fe stain on fractures	Ms Peg
CK09- 46	565442	5500010	2mm wide limonite rich quartz vein crossing quartzite	Ms Peg
CK09- 56	566039	5499584	Maybe part of extension of the Hampego showing - weakly altered quartzite - fracture with limonite stain and carbonate	Ms Peg
CK09 - 57	566039	5499584	Same as above - a little weaker black "soot" powder Mn? - carbonate rare lim	Ms Peg
CK09 - 58	566039	5499584	2cm pegmatite quartz vein fractured with weak lim stain	Ms Peg
CK09 - 107	564724	5500113	Quartz with limonite, carbonate - wad and rust - fault zone LA against sillimanite	Ms Peg
CK09 - 108	564724	5500113	Shisty LA may have garnet - silicified black graphitic limonite and quartz vein	Ms Peg
CK09 - 109	564834	550036	Metamorphic - clay altered rock - close to quartz contact mica shist - intermixed narrow quartz veins - limonite	Ms Peg
CK09 - 110	564813	5500042	Graphite replacing gabbro some weak limonite staining	
CK09 - 111	564813	5500042	White altered gabbro, clay altered yellow stain - graphite some quartz	Ms Peg
CK09 - 112	564951	5499915	Vuggy quartz float - limonite - phymorphitic in contoured skid trail	Ms Peg
CK09 - 113	564743	5499976	Silicified diabase? PO with rare cupy - very rusty rock	Ms Peg
CK09 - 114	564743	5499976	Quartz vein material - tourmaline crystals - some pyrite rare pbs	Ms Peg
CK09 - 115	564743	5499976	Limonite altered vuggy gabbro	Ms Peg
CK09 - 116	564743	5499976	Friable limonite material puncky	Ms Peg
CK09 - 117	564743	5499976	Black fine tourmaline needles some rust and graphite along fractures	Ms Peg
CK09 - 118	564235	5498918	3cm sulphide lense Po, cupy and bornite in chlorite micaceous host	Ms Peg
CK09 - 119	564235	5498918	Quartz boudins some limonite staining	Ms Peg
CK09 - 120	564235	5498918	Quartz float with vugs purple and limonite stain on road	Ms Peg
CK09 - 121	566250	5499975	Diabase dike "not sheared or foliated" narrow quartz veins with py - po and cupy (malachite)	Ms Peg
CK09 - 122	566250	5499975	Grey and white banded coarse quartzite	Ms Peg
CK09 - 123	563309	5499600	Sericite rich quartz, fractured vuggy limonite stained	Ms Peg

NOT PART OF THIS REPORT

CK09 - 124	563309	5499600	Limonite, punky narrow bed or flat bedding plain fault	Ms Peg
Sample No.	UTM E	UTM N	Description	Property
CK09 - 125	563309	5499600	Limonite, punky 5cm bed?	Ms Peg
CK09 - 126	563309	5499600	"Cleavage" massive sulphide pods - biotite, Po,Py and Zns	Ms Peg
CK09 - 127	563333	5499626	Bedding parallel or flat fault - breccia with lim	Ms Peg
CK09 - 128	563429	5499687	Some limonite hemetite breccia	Ms Peg
CK09 - 129	563511	5499803	Vuggy material - chlorite, actonlite, pyrite and marcasite - Aspy and Zns	Ms Peg
CK09 - 130	563541	5499809	Same as above with lim stain - structure 09 degree dip steep E	Ms Peg
CK09 - 131	563623	5499809	.5 meter wide quartz breccia - vugs and limonite material	Ms Peg
CK09 - 132	563780	5499925	Quartz vein float graphitic? Ribbons fine Aspy	Ms Peg
CK09 - 133	563780	5499925	Limonite wad float - lots of it	Ms Peg
CK09 - 134	563577	5500105	Structure - subcrop material limonite	Ms Peg
CK09 - 135	563577	5500105	Same as above	Ms Peg
CK09 - 136	564588	5499338	Minor limonite in quartz rich pegmatite	Ms Peg
CK09 - 137	564567	5499299	Black - amber felted tourmaline needles - seems of yellow oxide coated mica	Ms Peg
CK09 - 138	564567	5499299	Coarse yellow quartz or quartzite - amber disseminations of tourmailine crystals - rare black mineral	Ms Peg
CK09 - 139	564565	5499286	Yellow oxide along fractures in pegmatite	Ms Peg
CK09 - 140	565967	5499599	Narrow quartz veins with black and brown limonite crystals	Ms Peg
CK09 - 141	565967	5499599	Same as above	Ms Peg
CK09 - 142	565619	5499859	Interbeds of med grained silicified quartzite narrow to micro veins of quartz - some limonite and vugs with orange - brown powder oxide	Ms Peg
CK09 - 143	565619	5499859	Same as above	Ms Peg
CK09 - 144	565640	5499875	Quartzite beds micro veins vugs and limonite	Ms Peg
CK09 - 145	565899	5499945	Landing end of road - pastel lesgange type colors - narrow micro veins limonite stain and vugs	Ms Peg
CK09 - 146	566245	5499973	High angle narrow shears - quartz boudins? Stretched quartz vein material vugs and limonite	Ms Peg

CK09 - 147	566245	549973	Same area as above - Flat 1cm quartz vein vugs - orange to chocolate brown limonite	Ms Peg
Sample No.	UTM E	UTM N	Description	Property
CK09 - 148	566245	5499973	High angle quartz vein - same description as above - same area	Ms Peg
CK09 - 149	566276	5500037	Crystalline 10cm NW striking quartz some black disseminations	Ms Peg
CK09 - 150	565806	5499697	Subcrop - narrow silicified bands in quartzite - py and chalco and black mineral	Ms Peg
CK09 - 151	566327	5500113	Narrow 360 degree shear - narrow quartz vein dip W? Limonite and vugs	Ms Peg
CK09 - 152	566327	5500113	Fine micaceous banded material - rusty - narrow quartz boudins	Ms Peg
CK09 - 153	566327	5500113	Metabasite? - green micaceous - poddles of brown - "dalmation" alteration - carbonate? - malachite and some chalco	Ms Peg
CK09 - 154	566327	5500113	Same as above	Ms Peg
CK09 - 155	566327	5500113	Same as above	Ms Peg
CK09 - 156	566327	5500113	Same as above - narrow quartz veins and boudins in .5m wide shear zone malachite - chalco and limonite - rear Aspy?	Ms Peg
CK09 - 157	566327	5500113	Same as above	Ms Peg
CK09 - 158	565938	5499965	Mid road - Mylonite - stretched quartz material some vugs with limonite and powder yellow brown oxide	Ms Peg
CK09 - 159	565938	5499965	Same as above	Ms Peg
CK09 - 160	565938	5499965	Same as above	Ms Peg
CK09 - 161	566935	5499700	Green shisty micaceous rock narrow quartz veins - limonite stain	Ms Peg
CK09 - 162	566935	5499700	Same as above	Ms Peg
CK09 - 163	566322	5500095	Narrow quartz veins with limonite zone .5m wide - part of mega shear	Ms Peg

Appendix #2 - Assay Analysis



1020 Cordova St. East Vancouver BC V6A 4A3 Canada
 Phone (604) 253-3158 Fax (604) 253-1716

Acme Analytical Laboratories (Vancouver) Ltd.

www.acmelab.com

Client: Kootenay Gold Inc.
 Suite 960 - 1055 W. Hastings St.
 Vancouver BC V6E 2E9 Canada

Submitted By: Email Distribution List
 Receiving Lab: Canada-Vancouver
 Received: November 16, 2009
 Report Date: December 03, 2009
 Page: 1 of 2

CERTIFICATE OF ANALYSIS

VAN09005658.2

CLIENT JOB INFORMATION

Project: Ms. Peg (Hampego)
 Shipment ID:
 P.O. Number
 Number of Samples: 22

SAMPLE PREPARATION AND ANALYTICAL PROCEDURES

Method Code	Number of Samples	Code Description	Test Wgt (g)	Report Status	Lab
R200-250	22	Crush, split and pulverize 250 g rock to 200 mesh			VAN
1F02	22	1:1:1 Aqua Regia digestion Ultratrace ICP-MS analysis	15	Completed	VAN

SAMPLE DISPOSAL

DISP-PLP Dispose of Pulp After 90 days
 DISP-RJT Dispose of Reject After 90 days

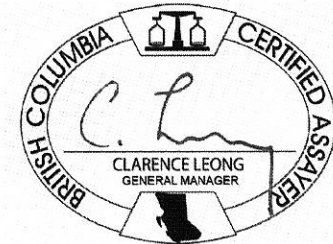
ADDITIONAL COMMENTS

Version 2 : 1F full suite included.

Acme does not accept responsibility for samples left at the laboratory after 90 days without prior written instructions for sample storage or return.

Invoice To: Kootenay Gold Inc.
 Suite 960 - 1055 W. Hastings St.
 Vancouver BC V6E 2E9
 Canada

CC:



This report supersedes all previous preliminary and final reports with this file number dated prior to the date on this certificate. Signature indicates final approval; preliminary reports are unsigned and should be used for reference only. All results are considered the confidential property of the client. Acme assumes the liabilities for actual cost of analysis only.
 *** asterisk indicates that an analytical result could not be provided due to unusually high levels of interference from other elements.



Acme Analytical Laboratories (Vancouver) Ltd.
 1020 Cordova St. East Vancouver BC V6A 4A3 Canada
 Phone (604) 253-3158 Fax (604) 253-1716

www.acmelab.com

Client: **Kootenay Gold Inc.**
 Suite 960 - 1055 W. Hastings St.
 Vancouver BC V6E 2E9 Canada

Project: Ms. Peg (Hampego)
 Report Date: December 03, 2009

Page: 2 of 2 Part 1

CERTIFICATE OF ANALYSIS

VAN09005658.2

Method	WGHT	1F15	1F15	1F15	1F15	1F15	1F15	1F15	1F15	1F15	1F15	1F15	1F15	1F15	1F15	1F15	1F15	1F15	1F15	1F15	
Analyte	Wgt	Mo	Cu	Pb	Zn	Ag	Ni	Co	Mn	Fe	As	U	Au	Th	Sr	Cd	Sb	Bi	V	Ca	
Unit	kg	ppm	ppm	ppm	ppm	ppb	ppm	ppm	ppm	%	ppm	ppm	ppb	ppm	ppm	ppm	ppm	ppm	ppm	%	
MDL	0.01	0.01	0.01	0.01	0.1	2	0.1	0.1	1	0.01	0.1	0.1	0.2	0.1	0.5	0.01	0.02	0.02	2	0.01	
CK09-142	Rock	0.65	0.86	56.51	8.70	20.5	36	5.6	2.8	69	2.20	3.4	1.8	<0.2	13.3	3.8	0.05	0.11	0.14	5	0.01
CK09-143	Rock	0.79	1.16	16.94	17.18	23.6	24	13.8	8.5	583	3.24	13.8	2.0	0.4	11.3	5.2	0.11	0.13	0.16	4	0.02
CK09-144	Rock	0.87	0.41	73.59	13.00	27.1	106	7.2	6.0	126	1.80	8.5	2.3	<0.2	12.6	5.1	0.06	0.30	0.37	4	0.05
CK09-145	Rock	0.71	1.99	152.1	10.81	15.4	46	13.8	9.4	421	3.80	8.7	2.5	0.8	9.8	3.8	0.05	0.13	0.25	3	0.02
CK09-146	Rock	0.44	2.06	148.0	13.15	58.0	19	25.8	16.8	752	4.63	24.6	1.3	3.4	4.8	5.2	0.06	0.22	15.90	29	0.10
CK09-147	Rock	0.73	5.78	23.61	7.17	60.7	22	32.4	20.2	1869	13.05	20.5	4.0	0.5	6.3	7.1	0.08	0.15	0.11	17	0.04
CK09-148	Rock	1.03	1.48	51.20	4.69	52.9	24	34.6	19.3	849	5.18	5.7	1.5	0.7	15.2	8.2	0.06	0.08	4.40	27	0.19
CK09-149	Rock	1.62	0.17	5.13	2.88	6.6	4	1.7	0.8	35	0.33	0.4	0.2	<0.2	1.1	1.2	0.02	0.03	0.13	<2	<0.01
CK09-150	Rock	0.56	0.68	366.7	19.20	34.0	342	12.0	6.8	189	1.01	0.3	1.2	0.5	4.1	20.3	0.18	0.03	0.29	8	0.44
CK09-151	Rock	0.66	2.20	581.8	17.36	19.9	118	20.5	11.8	529	7.99	33.3	3.1	2.5	9.2	3.2	0.12	0.14	0.55	6	0.04
CK09-152	Rock	0.53	1.47	15.54	4.16	23.7	16	16.1	9.0	247	2.59	4.4	2.7	2.5	11.6	2.8	0.06	0.07	0.04	4	0.08
CK09-153	Rock	0.62	3.40	4339	115.3	190.7	3503	100.5	57.1	2335	11.49	12.0	2.2	75.2	0.4	6.1	0.52	0.71	116.0	316	0.38
CK09-154	Rock	0.69	1.03	2389	52.47	146.3	2215	61.3	43.8	501	8.00	2.2	0.4	33.3	0.3	2.4	0.14	0.20	68.07	217	0.32
CK09-155	Rock	0.98	0.54	1340	3.27	30.5	1135	24.5	15.2	87	3.01	7.7	1.3	79.3	4.4	1.6	0.04	0.05	1.34	9	0.06
CK09-156	Rock	0.69	1.00	621.5	9.79	24.6	765	13.9	7.3	116	2.07	12.9	2.7	12.9	2.9	1.5	0.05	0.24	1.08	4	0.02
CK09-157	Rock	1.12	0.36	154.2	5.75	10.4	222	5.2	3.2	69	1.01	1.8	1.0	1.0	7.8	4.7	0.07	0.06	0.20	3	0.18
CK09-158	Rock	0.61	0.31	9.48	10.04	5.2	15	2.0	0.8	137	0.66	12.3	0.3	<0.2	0.2	2.2	0.05	0.04	0.08	<2	<0.01
CK09-159	Rock	0.70	1.43	11.47	8.43	60.6	19	125.1	20.2	928	4.33	19.2	0.7	1.6	3.7	4.0	0.09	<0.02	0.44	42	0.05
CK09-160	Rock	0.64	0.46	4.15	3.34	12.0	10	3.3	1.5	82	0.97	4.2	0.3	<0.2	0.3	1.3	0.03	<0.02	0.06	3	<0.01
CK09-161	Rock	0.86	0.95	49.44	50.51	133.1	60	227.7	43.4	320	8.66	3.7	1.2	<0.2	4.8	12.7	0.06	<0.02	0.50	228	0.40
CK09-162	Rock	0.56	2.11	43.93	12.51	15.4	20	23.9	7.0	500	3.72	9.7	3.0	0.7	16.6	3.1	0.03	<0.02	0.59	8	0.02
CK09-163	Rock	0.56	2.25	10.19	3.78	22.9	68	16.5	15.5	964	4.08	30.4	2.1	<0.2	5.2	3.2	0.08	<0.02	0.46	7	0.02

This report supersedes all previous preliminary and final reports with this file number dated prior to the date on this certificate. Signature indicates final approval; preliminary reports are unsigned and should be used for reference only.



Acme Analytical Laboratories (Vancouver) Ltd.
 1020 Cordova St. East Vancouver BC V6A 4A3 Canada
 Phone (604) 253-3158 Fax (604) 253-1716

www.acmelab.com

Client: **Kootenay Gold Inc.**
 Suite 960 - 1055 W. Hastings St.
 Vancouver BC V6E 2E9 Canada

Project: Ms. Peg (Hampego)
 Report Date: December 03, 2009

Page: 2 of 2 Part 2

CERTIFICATE OF ANALYSIS

VAN09005658.2

Method	Analyte	Unit	MDL	1F15 P	1F15 La	1F15 Cr	1F15 Mg	1F15 Ba	1F15 Ti	1F15 B	1F15 Al	1F15 Na	1F15 K	1F15 W	1F15 Sc	1F15 Tl	1F15 S	1F15 Hg	1F15 Se	1F15 Te	1F15 Ga	1F15 Cs	1F15 Ge
				%	ppm	ppm	%	ppm	%	ppm	%	%	%	ppm	ppm	ppm	%	ppb	ppm	ppm	ppm	ppm	ppm
				0.001	0.5	0.5	0.01	0.5	0.001	1	0.01	0.001	0.01	0.1	0.1	0.02	0.02	5	0.1	0.02	0.1	0.02	0.1
CK09-142	Rock			0.028	25.9	9.8	0.11	46.2	0.002	1	0.53	0.008	0.19	0.2	0.6	0.06	<0.02	<5	0.1	<0.02	1.7	0.54	<0.1
CK09-143	Rock			0.025	28.0	7.4	0.08	65.4	0.001	1	0.39	0.011	0.20	0.1	0.9	0.08	<0.02	<5	0.1	<0.02	1.2	0.80	0.1
CK09-144	Rock			0.029	27.8	10.8	0.06	39.0	0.002	1	0.43	0.010	0.16	0.1	0.7	0.08	<0.02	<5	0.2	<0.02	1.1	0.67	<0.1
CK09-145	Rock			0.018	33.2	6.8	0.06	27.2	0.004	<1	0.31	0.009	0.17	0.2	0.7	0.08	<0.02	<5	0.2	<0.02	1.2	1.06	0.2
CK09-146	Rock			0.030	8.3	23.9	0.75	30.9	0.008	<1	1.84	0.009	0.10	0.3	3.7	0.06	<0.02	<5	0.8	0.39	5.5	3.53	0.1
CK09-147	Rock			0.020	5.7	15.8	0.40	11.9	0.003	2	1.44	0.009	0.08	<0.1	7.4	0.03	<0.02	<5	0.2	<0.02	4.2	1.69	0.1
CK09-148	Rock			0.064	25.0	46.9	0.69	26.1	0.003	<1	2.04	0.018	0.16	<0.1	2.9	0.07	<0.02	<5	0.1	0.03	5.2	0.90	0.1
CK09-149	Rock			0.002	2.9	12.7	0.05	4.0	<0.001	<1	0.10	0.009	0.02	<0.1	0.2	<0.02	<0.02	<5	<0.1	<0.02	0.3	0.19	<0.1
CK09-150	Rock			0.038	8.5	18.6	0.16	64.6	0.018	<1	0.99	0.024	0.07	<0.1	0.5	0.07	0.13	<5	0.8	0.05	2.8	2.52	<0.1
CK09-151	Rock			0.028	26.9	11.4	0.05	25.2	0.002	<1	0.28	0.005	0.16	0.2	1.9	0.06	<0.02	<5	1.6	<0.02	1.0	0.88	<0.1
CK09-152	Rock			0.050	30.5	7.8	0.07	22.3	0.002	<1	0.35	0.010	0.21	0.1	1.1	0.07	<0.02	<5	0.2	<0.02	1.2	1.02	0.1
CK09-153	Rock			0.175	1.9	158.6	3.76	14.1	0.020	<1	3.84	0.004	0.02	<0.1	41.3	<0.02	0.02	7	1.6	13.33	12.7	0.38	0.7
CK09-154	Rock			0.152	0.9	179.7	5.38	4.3	0.022	<1	5.66	0.001	0.02	<0.1	26.4	<0.02	0.03	<5	1.4	5.38	16.3	0.37	0.5
CK09-155	Rock			0.031	13.4	15.3	0.65	10.0	0.003	<1	1.10	0.007	0.13	<0.1	1.2	0.05	<0.02	<5	0.4	0.15	2.8	0.37	<0.1
CK09-156	Rock			0.011	7.7	11.4	0.05	7.1	0.001	<1	0.17	0.005	0.05	<0.1	0.5	0.02	<0.02	<5	0.4	0.16	0.5	0.42	<0.1
CK09-157	Rock			0.086	33.4	10.8	0.03	19.8	0.001	1	0.29	0.010	0.18	<0.1	0.7	0.06	<0.02	<5	0.2	<0.02	1.2	0.47	<0.1
CK09-158	Rock			0.002	0.5	15.9	<0.01	5.9	<0.001	<1	0.03	0.004	<0.01	14.0	0.3	<0.02	<0.02	<5	<0.1	<0.02	0.1	0.24	0.1
CK09-159	Rock			0.025	12.6	56.3	1.66	22.9	0.005	<1	2.09	0.003	0.06	0.1	6.6	0.03	<0.02	<5	<0.1	0.06	6.8	0.44	0.2
CK09-160	Rock			0.001	0.7	15.2	0.09	2.5	0.002	<1	0.22	0.004	0.01	0.1	0.8	<0.02	<0.02	<5	<0.1	<0.02	0.6	0.18	<0.1
CK09-161	Rock			0.088	16.7	483.0	3.51	18.9	0.035	<1	4.79	0.003	0.03	<0.1	15.1	0.04	<0.02	<5	<0.1	<0.02	20.9	1.43	0.5
CK09-162	Rock			0.024	31.5	10.7	0.06	36.9	0.003	<1	0.51	0.004	0.22	0.1	1.1	0.07	<0.02	<5	<0.1	0.03	0.9	1.44	<0.1
CK09-163	Rock			0.011	11.2	10.0	0.07	33.9	0.003	1	0.33	0.007	0.19	0.2	1.5	0.10	<0.02	<5	<0.1	0.03	1.0	0.90	<0.1



1020 Cordova St. East Vancouver BC V6A 4A3 Canada
 Phone (604) 253-3158 Fax (604) 253-1716

Acme Analytical Laboratories (Vancouver) Ltd.

www.acmelab.com

Client: **Kootenay Gold Inc.**
 Suite 960 - 1055 W. Hastings St.
 Vancouver BC V6E 2E9 Canada

Project: Ms. Peg (Hampego)
 Report Date: December 03, 2009

Page: 2 of 2 Part 3

CERTIFICATE OF ANALYSIS

VAN09005658.2

Method	1F15	1F15	1F15	1F15	1F15	1F15	1F15	1F15	1F15	1F15	1F15	1F15	1F15	1F15	
Analyte	Hf	Nb	Rb	Sn	Ta	Zr	Y	Ce	In	Re	Be	Li	Pd	Pt	
Unit	ppm	ppm	ppm	ppm	ppm	ppm	ppm	ppm	ppm	ppb	ppm	ppm	ppb	ppb	
MDL	0.02	0.02	0.1	0.1	0.05	0.1	0.01	0.1	0.02	1	0.1	0.1	10	2	
CK09-142	Rock	<0.02	0.08	9.4	<0.1	<0.05	0.2	1.98	53.4	<0.02	<1	0.1	3.7	<10	<2
CK09-143	Rock	<0.02	0.09	10.3	0.1	<0.05	0.6	2.61	56.1	<0.02	<1	0.3	2.9	<10	<2
CK09-144	Rock	<0.02	0.07	10.1	<0.1	<0.05	0.2	3.13	56.9	<0.02	<1	0.3	2.0	<10	<2
CK09-145	Rock	<0.02	0.08	9.0	<0.1	<0.05	0.4	3.16	66.7	<0.02	<1	0.3	2.5	<10	<2
CK09-146	Rock	0.03	0.04	7.3	0.4	<0.05	1.7	3.37	25.1	0.24	<1	0.4	21.0	<10	<2
CK09-147	Rock	<0.02	0.03	5.5	<0.1	<0.05	0.5	8.27	11.9	0.27	<1	0.2	21.2	<10	<2
CK09-148	Rock	<0.02	<0.02	10.7	<0.1	<0.05	0.2	4.61	50.7	0.02	<1	0.2	25.5	<10	<2
CK09-149	Rock	<0.02	<0.02	1.1	<0.1	<0.05	0.2	0.41	5.6	<0.02	<1	<0.1	1.4	<10	<2
CK09-150	Rock	<0.02	0.16	4.0	<0.1	<0.05	0.1	3.89	20.2	<0.02	<1	0.4	8.9	<10	<2
CK09-151	Rock	0.05	0.05	9.7	0.1	<0.05	2.7	4.47	51.3	0.12	<1	0.6	1.6	<10	<2
CK09-152	Rock	<0.02	0.08	11.7	0.6	<0.05	0.4	4.32	61.2	<0.02	<1	0.3	1.7	<10	<2
CK09-153	Rock	<0.02	0.03	1.5	2.2	<0.05	0.2	7.75	2.4	0.80	<1	0.6	44.2	<10	<2
CK09-154	Rock	<0.02	<0.02	1.5	1.5	<0.05	<0.1	3.56	1.4	0.77	<1	0.4	79.5	<10	<2
CK09-155	Rock	<0.02	0.04	8.2	0.5	<0.05	0.3	3.45	25.9	0.15	<1	0.3	15.5	<10	<2
CK09-156	Rock	<0.02	0.08	3.8	0.2	<0.05	0.6	1.35	14.9	0.07	<1	0.2	1.4	<10	<2
CK09-157	Rock	<0.02	0.04	11.0	0.1	<0.05	0.4	3.92	67.1	<0.02	<1	0.1	0.8	<10	<2
CK09-158	Rock	<0.02	0.06	0.7	<0.1	<0.05	0.2	1.42	1.2	<0.02	<1	<0.1	0.2	<10	<2
CK09-159	Rock	<0.02	0.03	4.6	<0.1	<0.05	1.0	2.65	27.4	0.04	<1	0.2	34.4	<10	<2
CK09-160	Rock	<0.02	0.04	0.8	<0.1	<0.05	<0.1	0.69	1.4	<0.02	<1	<0.1	3.5	<10	<2
CK09-161	Rock	0.07	0.05	5.1	0.2	<0.05	1.6	4.16	27.8	0.06	<1	0.5	53.2	<10	<2
CK09-162	Rock	<0.02	0.08	9.8	<0.1	<0.05	0.5	3.69	60.1	<0.02	<1	0.5	2.9	<10	<2
CK09-163	Rock	<0.02	0.08	10.7	<0.1	<0.05	0.4	2.36	21.7	0.03	<1	0.3	3.6	<10	<2

This report supersedes all previous preliminary and final reports with this file number dated prior to the date on this certificate. Signature indicates final approval; preliminary reports are unsigned and should be used for reference only.



Acme Analytical Laboratories (Vancouver) Ltd.

1020 Cordova St. East Vancouver BC V6A 4A3 Canada
 Phone (604) 253-3158 Fax (604) 253-1716

www.acmelab.com

Client: **Kootenay Gold Inc.**
 Suite 960 - 1055 W. Hastings St.
 Vancouver BC V6E 2E9 Canada

Project: Ms. Peg (Hampego)

Report Date: December 03, 2009

Page: 1 of 1 Part 1

QUALITY CONTROL REPORT

VAN09005658.2

Method	WGHT	1F15	1F15	1F15	1F15	1F15	1F15	1F15	1F15	1F15	1F15	1F15	1F15	1F15	1F15	1F15	1F15	1F15	1F15	1F15		
Analyte	Wgt	Mo	Cu	Pb	Zn	Ag	Ni	Co	Mn	Fe	As	U	Au	Th	Sr	Cd	Sb	Bi	V	Ca		
Unit	kg	ppm	ppm	ppm	ppm	ppb	ppm	ppm	ppm	%	ppm	ppm	ppb	ppm	ppm	ppm	ppm	ppm	ppm	%		
MDL	0.01	0.01	0.01	0.01	0.1	2	0.1	0.1	1	0.01	0.1	0.1	0.2	0.1	0.5	0.01	0.02	0.02	2	0.01		
Pulp Duplicates																						
CK09-156	Rock	0.69	1.00	621.5	9.79	24.6	765	13.9	7.3	116	2.07	12.9	2.7	12.9	2.9	1.5	0.05	0.24	1.08	4	0.02	
REP CK09-156	QC		1.01	637.1	9.52	23.5	751	14.4	7.7	113	2.12	12.9	2.7	15.5	2.8	1.5	0.04	0.22	1.02	4	0.02	
Reference Materials																						
STD DS7	Standard		23.48	119.1	67.24	401.5	889	62.4	10.1	600	2.37	48.0	4.6	75.8	4.3	66.3	5.79	5.89	4.06	83	0.99	
STD DS7	Standard		21.72	119.8	75.54	413.1	845	58.7	9.8	630	2.39	51.6	5.0	78.9	4.4	71.3	6.75	6.16	4.91	80	1.03	
STD DS7 Expected			20.5	109	70.6	411	890	56	9.7	627	2.39	48.2	4.9	70	4.4	68.7	6.38	4.6	4.51	84	0.93	
BLK	Blank		<0.01	<0.01	<0.01	<0.1	<2	<0.1	<0.1	<1	<0.01	<0.1	<0.1	<0.2	<0.1	<0.5	<0.01	<0.02	<0.02	<2	<0.01	
BLK	Blank		<0.01	<0.01	<0.01	<0.1	<2	<0.1	<0.1	<1	<0.01	<0.1	<0.1	<0.2	<0.1	<0.5	<0.01	<0.02	<0.02	<2	<0.01	
Prep Wash																						
G1	Prep Blank		<0.01	0.28	2.28	3.62	53.2	9	4.3	5.1	584	2.06	1.6	1.8	0.3	3.8	56.1	0.02	0.11	0.07	39	0.54
G1	Prep Blank		<0.01	0.12	2.27	3.08	48.2	6	4.1	4.9	627	2.12	0.2	1.6	<0.2	4.0	54.2	0.02	<0.02	0.06	40	0.57

This report supersedes all previous preliminary and final reports with this file number dated prior to the date on this certificate. Signature indicates final approval; preliminary reports are unsigned and should be used for reference only.



Acme Analytical Laboratories (Vancouver) Ltd.

1020 Cordova St. East Vancouver BC V6A 4A3 Canada
 Phone (604) 253-3158 Fax (604) 253-1716

www.acmelab.com

Client: **Kootenay Gold Inc.**
 Suite 960 - 1055 W. Hastings St.
 Vancouver BC V6E 2E9 Canada

Project: Ms. Peg (Hampego)

Report Date: December 03, 2009

Page: 1 of 1 Part 2

QUALITY CONTROL REPORT

VAN09005658.2

Method		1F15	1F15	1F15	1F15	1F15	1F15	1F15	1F15	1F15	1F15	1F15	1F15	1F15	1F15	1F15	1F15	1F15	1F15	1F15	1F15
Analyte		P	La	Cr	Mg	Ba	Ti	B	Al	Na	K	W	Sc	Tl	S	Hg	Se	Te	Ga	Cs	Ge
Unit		%	ppm	ppm	%	ppm	%	ppm	%	%	%	ppm	ppm	ppm	%	ppb	ppm	ppm	ppm	ppm	ppm
MDL		0.001	0.5	0.5	0.01	0.5	0.001	1	0.01	0.001	0.01	0.1	0.1	0.02	0.02	5	0.1	0.02	0.1	0.02	0.1
Pulp Duplicates																					
CK09-156	Rock	0.011	7.7	11.4	0.05	7.1	0.001	<1	0.17	0.005	0.05	<0.1	0.5	0.02	<0.02	<5	0.4	0.16	0.5	0.42	<0.1
REP CK09-156	QC	0.011	7.4	10.9	0.05	6.9	0.001	<1	0.16	0.005	0.05	<0.1	0.6	0.02	<0.02	<5	0.4	0.14	0.6	0.41	<0.1
Reference Materials																					
STD DS7	Standard	0.075	13.1	224.1	1.01	365.3	0.130	39	1.01	0.088	0.43	3.7	2.4	4.00	0.20	210	3.8	0.99	4.4	5.67	<0.1
STD DS7	Standard	0.086	13.0	195.9	1.02	380.3	0.121	41	0.98	0.092	0.43	4.1	2.6	4.33	0.20	208	3.6	1.26	4.7	6.12	0.1
STD DS7 Expected		0.08	11.7	179	1.05	370.3	0.124	38.6	0.959	0.089	0.44	3.4	2.5	4.19	0.19	200	3.5	1.08	4.6	6.36	0.1
BLK	Blank	<0.001	<0.5	<0.5	<0.01	<0.5	<0.001	<1	<0.01	<0.001	<0.01	<0.1	<0.1	<0.02	<0.02	<5	<0.1	<0.02	<0.1	<0.02	<0.1
BLK	Blank	<0.001	<0.5	<0.5	<0.01	<0.5	<0.001	<1	<0.01	<0.001	<0.01	<0.1	<0.1	<0.02	<0.02	<5	<0.1	<0.02	<0.1	<0.02	<0.1
Prep Wash																					
G1	Prep Blank	0.090	7.3	9.0	0.63	269.9	0.149	2	0.98	0.070	0.57	<0.1	2.1	0.40	<0.02	<5	<0.1	<0.02	5.3	3.74	0.1
G1	Prep Blank	0.089	8.0	8.9	0.65	263.6	0.152	2	1.04	0.081	0.60	<0.1	2.2	0.41	<0.02	<5	<0.1	<0.02	5.3	3.67	0.2

This report supersedes all previous preliminary and final reports with this file number dated prior to the date on this certificate. Signature indicates final approval, preliminary reports are unsigned and should be used for reference only.



Acme Analytical Laboratories (Vancouver) Ltd.
 1020 Cordova St. East Vancouver BC V6A 4A3 Canada
 Phone (604) 253-3158 Fax (604) 253-1716

www.acmelab.com

Client: **Kootenay Gold Inc.**
 Suite 960 - 1055 W. Hastings St.
 Vancouver BC V6E 2E9 Canada

Project: Ms. Peg (Hampego)

Report Date: December 03, 2009

Page: 1 of 1 Part 3

QUALITY CONTROL REPORT

VAN09005658.2

Method	Analyte	Unit	MDL	1F15 Hf	1F15 Nb	1F15 Rb	1F15 Sn	1F15 Ta	1F15 Zr	1F15 Y	1F15 Ce	1F15 In	1F15 Re	1F15 Be	1F15 Li	1F15 Pd	1F15 Pt
				ppm	ppm	ppm	ppm	ppm	ppm	ppm	ppm	ppm	ppb	ppm	ppm	ppb	ppb
				0.02	0.02	0.1	0.1	0.05	0.1	0.01	0.1	0.02	1	0.1	0.1	10	2
Pulp Duplicates																	
CK09-156	Rock			<0.02	0.08	3.8	0.2	<0.05	0.6	1.35	14.9	0.07	<1	0.2	1.4	<10	<2
REP CK09-156	QC			<0.02	0.08	3.5	0.2	<0.05	0.6	1.32	14.6	0.06	<1	0.2	1.5	<10	<2
Reference Materials																	
STD DS7	Standard			0.11	0.73	34.3	4.9	<0.05	5.7	5.58	34.7	1.51	4	1.7	25.7	76	33
STD DS7	Standard			0.12	0.67	30.9	5.0	<0.05	5.5	5.82	35.7	1.63	4	1.5	26.4	63	39
STD DS7 Expected				0.11	0.71	35.8	4.61		5.4	5.18	36	1.57	4	1.6	29.3	58	37
BLK	Blank			<0.02	<0.02	<0.1	<0.1	<0.05	<0.1	<0.01	<0.1	<0.02	<1	<0.1	<0.1	<10	<2
BLK	Blank			<0.02	<0.02	<0.1	<0.1	<0.05	<0.1	<0.01	<0.1	<0.02	<1	<0.1	<0.1	<10	<2
Prep Wash																	
G1	Prep Blank			0.07	0.33	44.8	0.5	<0.05	0.9	4.23	13.6	<0.02	<1	0.3	35.1	<10	<2
G1	Prep Blank			0.08	0.30	44.8	0.5	<0.05	1.0	4.65	15.3	<0.02	<1	0.2	36.6	<10	<2



1020 Cordova St. East Vancouver BC V6A 4A3 Canada
 Phone (604) 253-3158 Fax (604) 253-1716

Acme Analytical Laboratories (Vancouver) Ltd.

www.acmelab.com

Client: Kootenay Gold Inc.
 Suite 960 - 1055 W. Hastings St.
 Vancouver BC V6E 2E9 Canada

Submitted By: Email Distribution List
 Receiving Lab: Canada-Vancouver
 Received: August 10, 2009
 Report Date: August 28, 2009
 Page: 1 of 2

CERTIFICATE OF ANALYSIS

VAN09003467.1

CLIENT JOB INFORMATION

Project: MS Peg
 Shipment ID:
 P.O. Number
 Number of Samples: 16

SAMPLE PREPARATION AND ANALYTICAL PROCEDURES

Method Code	Number of Samples	Code Description	Test Wgt (g)	Report Status	Lab
R200	16	Crush, split and pulverize rock to 200 mesh			VAN
1F05	16	1:1:1 Aqua Regia digestion Ultratrace ICP-MS analysis	15	Completed	VAN

SAMPLE DISPOSAL

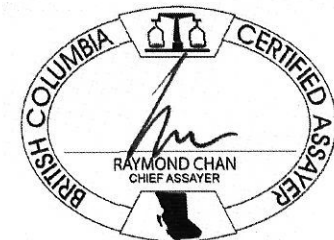
STOR-PLP Store After 90 days Invoice for Storage
 DISP-RJT Dispose of Reject After 90 days

ADDITIONAL COMMENTS

Acme does not accept responsibility for samples left at the laboratory after 90 days without prior written instructions for sample storage or return.

Invoice To: Kootenay Gold Inc.
 Suite 960 - 1055 W. Hastings St.
 Vancouver BC V6E 2E9
 Canada

CC: Craig Kennedy



This report supersedes all previous preliminary and final reports with this file number dated prior to the date on this certificate. Signature indicates final approval; preliminary reports are unsigned and should be used for reference only. All results are considered the confidential property of the client. Acme assumes the liabilities for actual cost of analysis only.
 *** asterisk indicates that an analytical result could not be provided due to unusually high levels of interference from other elements.



Acme Analytical Laboratories (Vancouver) Ltd.
 1020 Cordova St. East Vancouver BC V6A 4A3 Canada
 Phone (604) 253-3158 Fax (604) 253-1716

www.acmelab.com

Client: **Kootenay Gold Inc.**
 Suite 960 - 1055 W. Hastings St.
 Vancouver BC V6E 2E9 Canada

Project: MS Peg
 Report Date: August 28, 2009

Page: 2 of 2 Part 1

CERTIFICATE OF ANALYSIS

VAN09003467.1

Method	WGHT	1F15	1F15	1F15	1F15	1F15	1F15	1F15	1F15	1F15	1F15	1F15	1F15	1F15	1F15	1F15	1F15	1F15	1F15	1F15	1F15
Analyte	Wgt	Mo	Cu	Pb	Zn	Ag	Ni	Co	Mn	Fe	As	U	Au	Th	Sr	Cd	Sb	Bi	V	Ca	
Unit	kg	ppm	ppm	ppm	ppm	ppb	ppm	ppm	ppm	%	ppm	ppm	ppb	ppm	ppm	ppm	ppm	ppm	ppm	ppm	
MDL	0.01	0.01	0.01	0.01	0.1	2	0.1	0.1	1	0.01	0.1	0.1	0.2	0.1	0.5	0.01	0.02	0.02	2	0.01	
CK09-107	Rock	0.89	4.49	260.0	313.9	166.5	709	16.1	6.2	113	8.10	223.3	0.6	2.7	0.8	2.1	1.01	0.40	2.74	28	0.01
CK09-108	Rock	0.82	2.94	385.0	481.5	93.7	779	25.3	12.5	83	8.88	146.9	0.7	2.2	2.9	3.3	0.66	0.36	8.38	47	0.03
CK09-109	Rock	0.65	2.30	183.9	5.95	64.9	49	34.2	5.5	211	5.35	75.1	2.9	0.4	10.3	21.2	0.19	0.17	0.18	54	0.16
CK09-110	Rock	0.69	0.13	20.72	14.55	100.8	31	8.1	10.6	369	4.66	28.2	0.6	<0.2	5.6	26.9	0.18	0.08	0.05	62	1.42
CK09-111	Rock	0.94	0.11	33.00	14.43	87.4	20	8.1	13.3	315	3.83	10.9	0.1	<0.2	0.1	10.4	0.12	0.04	0.06	51	0.13
CK09-112	Rock	0.94	4.47	2007	8374	63.0	45586	8.6	3.0	196	7.70	2316	3.6	2429	0.5	2.9	1.51	6.97	64.44	8	0.02
CK09-113	Rock	0.73	5.96	443.6	37.91	75.3	319	72.3	40.9	200	5.99	16.8	3.9	1.0	5.9	6.0	0.19	0.11	0.34	20	0.29
CK09-114	Rock	0.84	1.48	164.6	149.8	54.9	666	9.3	5.5	245	6.88	29.9	1.3	0.3	3.3	8.3	0.23	0.14	1.31	15	0.19
CK09-115	Rock	0.72	6.29	36.30	193.6	8.3	504	4.7	2.6	114	1.11	39.0	0.3	<0.2	1.3	10.4	0.09	0.40	1.16	2	0.34
CK09-116	Rock	0.51	2.64	447.1	921.7	123.9	810	67.3	63.1	188	10.51	383.2	1.6	4.6	2.8	4.1	1.90	1.00	4.54	59	0.10
CK09-117	Rock	0.70	1.78	36.03	53.49	15.9	81	4.7	1.4	138	2.08	64.2	1.2	<0.2	17.1	3.2	0.15	0.47	0.10	4	0.01
CK09-118	Rock	0.92	1.32	1679	5.85	90.5	998	165.6	117.5	593	10.94	76.3	3.9	18.5	6.3	4.5	0.09	0.08	6.27	55	0.21
CK09-119	Rock	0.91	1.16	1561	9.35	37.9	732	30.1	34.3	166	3.09	2.6	0.4	2.0	0.9	7.3	0.16	0.18	0.18	14	0.34
CK09-120	Rock	1.10	1.35	46.18	105.1	15.0	6440	2.3	1.2	65	0.94	3.4	0.1	101.5	0.3	0.7	0.05	0.12	25.00	<2	<0.01
CK09-121	Rock	0.79	1.15	634.0	59.29	209.1	470	86.6	75.1	997	11.40	<0.1	<0.1	50.9	0.2	21.1	0.41	0.08	37.39	140	2.03
CK09-122	Rock	0.60	0.16	5.63	2.75	4.1	45	3.6	2.6	32	0.37	1.0	0.2	0.2	1.2	0.7	0.02	0.03	0.08	<2	0.02

This report supersedes all previous preliminary and final reports with this file number dated prior to the date on this certificate. Signature indicates final approval; preliminary reports are unsigned and should be used for reference only.



Acme Analytical Laboratories (Vancouver) Ltd.
 1020 Cordova St. East Vancouver BC V6A 4A3 Canada
 Phone (604) 253-3158 Fax (604) 253-1716

www.acmelab.com

Client: **Kootenay Gold Inc.**
 Suite 960 - 1055 W. Hastings St.
 Vancouver BC V6E 2E9 Canada

Project: MS Peg
 Report Date: August 28, 2009

Page: 2 of 2 Part 2

CERTIFICATE OF ANALYSIS

VAN09003467.1

Method	1F15	1F15	1F15	1F15	1F15	1F15	1F15	1F15	1F15	1F15	1F15	1F15	1F15	1F15	1F15	1F15	1F15	1F15	1F15	1F15	
Analyte	P	La	Cr	Mg	Ba	Ti	B	Al	Na	K	W	Sc	Tl	S	Hg	Se	Te	Ga	Cs	Ge	
Unit	%	ppm	ppm	%	ppm	%	ppm	%	%	%	ppm	ppm	ppm	%	ppb	ppm	ppm	ppm	ppm	ppm	
MDL	0.001	0.5	0.5	0.01	0.5	0.001	1	0.01	0.001	0.01	0.1	0.1	0.02	0.02	5	0.1	0.02	0.1	0.02	0.1	
CK09-107	Rock	0.058	2.5	17.2	0.01	8.3	0.002	1	0.20	0.002	0.04	12.9	8.1	<0.02	<0.02	<5	0.5	0.09	0.4	0.21	<0.1
CK09-108	Rock	0.053	7.6	22.4	0.04	16.2	0.002	<1	0.33	0.002	0.11	11.5	2.4	0.05	0.03	7	0.7	0.27	0.6	2.32	<0.1
CK09-109	Rock	0.150	34.5	66.4	0.74	59.3	0.042	<1	1.38	0.005	0.32	2.3	1.6	0.99	0.04	<5	1.3	0.28	3.2	11.13	0.2
CK09-110	Rock	0.577	14.3	4.2	1.08	57.1	0.020	1	2.69	0.006	0.34	6.7	5.6	0.26	<0.02	6	0.2	<0.02	8.1	4.99	0.1
CK09-111	Rock	0.010	2.2	16.1	0.92	41.7	0.007	1	2.23	0.022	0.17	1.4	4.5	0.07	<0.02	<5	<0.1	<0.02	6.6	1.22	<0.1
CK09-112	Rock	0.130	4.8	17.2	0.02	12.2	0.002	1	0.24	0.004	0.12	4.1	0.8	0.06	0.11	29	2.5	1.64	0.8	0.39	<0.1
CK09-113	Rock	0.118	5.4	18.4	0.88	50.6	0.007	<1	1.60	0.007	0.21	0.5	1.5	0.15	2.90	<5	2.7	0.11	3.7	1.65	<0.1
CK09-114	Rock	0.039	8.1	13.8	0.44	26.3	0.009	<1	0.96	0.012	0.14	0.9	1.5	0.14	0.46	<5	2.3	0.49	3.3	1.61	<0.1
CK09-115	Rock	0.208	4.2	13.1	0.02	12.3	0.003	14	0.11	0.005	0.05	0.8	0.3	0.03	0.06	15	0.4	0.12	0.3	0.35	<0.1
CK09-116	Rock	0.107	5.7	30.7	0.20	21.3	0.001	<1	0.38	0.004	0.16	70.8	1.3	0.18	0.07	71	1.7	0.58	1.3	2.21	<0.1
CK09-117	Rock	0.027	38.7	6.6	0.01	39.2	<0.001	8	0.26	0.006	0.28	1.7	1.5	0.15	0.05	25	<0.1	0.02	0.7	1.29	<0.1
CK09-118	Rock	0.114	9.1	59.8	1.02	16.9	0.017	<1	3.55	0.018	0.10	0.2	6.2	0.12	2.10	<5	11.1	0.78	11.9	2.29	0.1
CK09-119	Rock	0.006	3.1	15.4	0.61	13.7	0.009	2	1.20	0.008	0.08	0.5	1.4	0.06	1.54	<5	3.4	0.19	2.7	0.33	<0.1
CK09-120	Rock	0.006	0.9	17.1	<0.01	4.3	<0.001	<1	0.04	0.002	0.02	0.5	0.2	<0.02	<0.02	<5	0.2	1.50	0.1	0.12	<0.1
CK09-121	Rock	0.104	1.3	40.6	3.31	0.8	0.077	<1	5.22	0.012	0.01	<0.1	14.6	<0.02	1.11	<5	2.7	1.75	19.5	1.07	0.5
CK09-122	Rock	0.004	4.8	11.9	0.22	1.7	0.001	<1	0.18	0.002	<0.01	0.3	0.2	<0.02	<0.02	<5	<0.1	<0.02	0.5	0.07	<0.1

This report supersedes all previous preliminary and final reports with this file number dated prior to the date on this certificate. Signature indicates final approval; preliminary reports are unsigned and should be used for reference only.



Acme Analytical Laboratories (Vancouver) Ltd.
 1020 Cordova St. East Vancouver BC V6A 4A3 Canada
 Phone (604) 253-3158 Fax (604) 253-1716

www.acmelab.com

Client: **Kootenay Gold Inc.**
 Suite 960 - 1055 W. Hastings St.
 Vancouver BC V6E 2E9 Canada

Project: MS Peg
 Report Date: August 28, 2009

Page: 2 of 2 Part 3

CERTIFICATE OF ANALYSIS

VAN09003467.1

Method	Analyte	1F15	1F15	1F15	1F15	1F15	1F15	1F15	1F15	1F15	1F15	1F15	1F15	1F15	
		Hf	Nb	Rb	Sn	Ta	Zr	Y	Ce	In	Re	Be	Li	Pd	Pt
Unit		ppm	ppm	ppm	ppm	ppm	ppm	ppm	ppm	ppb	ppm	ppm	ppb	ppb	
MDL		0.02	0.02	0.1	0.1	0.05	0.1	0.01	0.1	0.02	1	0.1	0.1	10	2
CK09-107	Rock	<0.02	0.07	2.5	0.5	<0.05	0.4	8.99	5.8	0.08	<1	0.5	0.6	<10	<2
CK09-108	Rock	<0.02	0.04	7.3	1.5	<0.05	0.6	4.31	15.7	0.03	<1	1.8	1.5	<10	<2
CK09-109	Rock	0.02	0.11	43.1	0.6	<0.05	1.2	10.46	70.3	<0.02	<1	0.7	15.5	<10	<2
CK09-110	Rock	<0.02	0.06	30.9	2.1	<0.05	0.8	17.80	32.9	<0.02	<1	2.9	21.5	<10	<2
CK09-111	Rock	<0.02	0.09	11.7	0.4	<0.05	0.2	2.49	5.3	<0.02	<1	1.7	23.9	<10	<2
CK09-112	Rock	0.04	0.20	9.4	8.5	0.09	1.0	3.05	5.5	0.27	<1	0.9	0.6	<10	<2
CK09-113	Rock	<0.02	0.05	16.5	0.9	<0.05	0.3	3.39	11.3	<0.02	12	0.4	25.1	<10	<2
CK09-114	Rock	<0.02	0.09	13.6	1.4	<0.05	0.7	5.00	18.7	<0.02	<1	0.6	14.8	<10	<2
CK09-115	Rock	<0.02	0.09	3.8	2.8	<0.05	0.2	3.22	9.4	<0.02	<1	0.2	1.1	<10	<2
CK09-116	Rock	0.02	0.11	13.5	0.6	<0.05	1.2	10.58	10.2	0.07	3	2.5	5.1	<10	<2
CK09-117	Rock	<0.02	0.05	20.5	0.8	<0.05	0.2	2.38	85.6	<0.02	<1	0.8	1.8	<10	<2
CK09-118	Rock	<0.02	0.08	12.6	0.6	<0.05	0.6	4.12	18.5	0.12	<1	0.2	61.3	<10	<2
CK09-119	Rock	<0.02	0.04	8.4	0.4	<0.05	0.2	1.43	6.5	<0.02	5	0.2	11.9	<10	<2
CK09-120	Rock	<0.02	0.07	1.0	0.3	<0.05	0.1	0.61	1.8	<0.02	<1	<0.1	0.3	<10	<2
CK09-121	Rock	<0.02	0.11	1.7	1.7	<0.05	<0.1	5.42	2.8	0.15	<1	0.3	46.7	<10	<2
CK09-122	Rock	<0.02	0.03	0.9	0.5	<0.05	0.1	0.48	9.4	<0.02	<1	<0.1	3.0	<10	<2

This report supersedes all previous preliminary and final reports with this file number dated prior to the date on this certificate. Signature indicates final approval; preliminary reports are unsigned and should be used for reference only.



Acme Analytical Laboratories (Vancouver) Ltd.

1020 Cordova St. East Vancouver BC V6A 4A3 Canada
 Phone (604) 253-3158 Fax (604) 253-1716

www.acmelab.com

Client: **Kootenay Gold Inc.**
 Suite 960 - 1055 W. Hastings St.
 Vancouver BC V6E 2E9 Canada

Project: MS Peg
 Report Date: August 28, 2009

Page: 1 of 1 Part 1

QUALITY CONTROL REPORT **VAN09003467.1**

Method	WGHT	1F15	1F15	1F15	1F15	1F15	1F15	1F15	1F15	1F15	1F15	1F15	1F15	1F15	1F15	1F15	1F15	1F15	1F15	1F15	1F15	
Analyte	Wgt	Mo	Cu	Pb	Zn	Ag	Ni	Co	Mn	Fe	As	U	Au	Th	Sr	Cd	Sb	Bi	V	Ca		
Unit	kg	ppm	ppm	ppm	ppm	ppb	ppm	ppm	ppm	%	ppm	ppm	ppb	ppm	ppm	ppm	ppm	ppm	ppm	ppm		
MDL	0.01	0.01	0.01	0.01	0.1	2	0.1	0.1	1	0.01	0.1	0.1	0.2	0.1	0.5	0.01	0.02	0.02	2	0.01		
Pulp Duplicates																						
CK09-112	Rock	0.94	4.47	2007	8374	63.0	45586	8.6	3.0	196	7.70	2316	3.6	2429	0.5	2.9	1.51	6.97	64.44	8	0.02	
REP CK09-112	QC		4.42	1988	8117	63.0	44339	6.4	3.0	191	7.61	2247	3.6	1760	0.5	2.9	1.45	6.93	61.46	8	0.02	
Reference Materials																						
STD DS7	Standard		20.68	105.4	61.45	394.0	803	55.6	9.6	612	2.37	53.1	4.6	60.8	4.3	73.0	6.50	6.14	4.36	81	0.95	
STD DS7	Standard		20.45	104.5	68.81	383.1	825	57.2	9.3	612	2.35	49.4	4.7	67.4	4.4	71.2	6.46	5.77	4.69	79	0.97	
STD DS7 Expected			20.5	109	70.6	411	890	56	9.7	627	2.39	48.2	4.9	70	4.4	68.7	6.38	4.6	4.51	84	0.93	
BLK	Blank		<0.01	<0.01	<0.01	<0.1	<2	<0.1	<0.1	<1	<0.01	<0.1	<0.1	<0.2	<0.1	<0.5	<0.01	<0.02	<0.02	<2	<0.01	
BLK	Blank		<0.01	<0.01	<0.01	<0.1	<2	<0.1	<0.1	<1	<0.01	<0.1	<0.1	<0.2	<0.1	<0.5	<0.01	<0.02	<0.02	<2	<0.01	
Prep Wash																						
G1	Prep Blank		<0.01	0.21	2.77	3.48	46.6	11	2.8	4.6	572	2.08	0.5	2.0	3.8	6.2	56.2	0.02	<0.02	0.13	40	0.50
G1	Prep Blank		<0.01	0.15	2.83	3.58	50.5	11	3.0	4.7	599	2.06	0.1	2.4	1.4	6.6	63.0	0.02	<0.02	0.21	38	0.53

This report supersedes all previous preliminary and final reports with this file number dated prior to the date on this certificate. Signature indicates final approval; preliminary reports are unsigned and should be used for reference only.



Acme Analytical Laboratories (Vancouver) Ltd.

1020 Cordova St. East Vancouver BC V6A 4A3 Canada
 Phone (604) 253-3158 Fax (604) 253-1716

www.acmelab.com

Client: **Kootenay Gold Inc.**
 Suite 960 - 1055 W. Hastings St.
 Vancouver BC V6E 2E9 Canada

Project: MS Peg
 Report Date: August 28, 2009

Page: 1 of 1 Part 2

QUALITY CONTROL REPORT

VAN09003467.1

Method		1F15	1F15	1F15	1F15	1F15	1F15	1F15	1F15	1F15	1F15	1F15	1F15	1F15	1F15	1F15	1F15	1F15	1F15	1F15	1F15
Analyte		P	La	Cr	Mg	Ba	Ti	B	Al	Na	K	W	Sc	Tl	S	Hg	Se	Te	Ga	Cs	Ge
Unit		%	ppm	ppm	%	ppm	%	ppm	%	%	%	ppm	ppm	ppm	%	ppb	ppm	ppm	ppm	ppm	ppm
MDL		0.001	0.5	0.5	0.01	0.5	0.001	1	0.01	0.001	0.01	0.1	0.1	0.02	0.02	5	0.1	0.02	0.1	0.02	0.1
Pulp Duplicates																					
CK09-112	Rock	0.130	4.8	17.2	0.02	12.2	0.002	1	0.24	0.004	0.12	4.1	0.8	0.06	0.11	29	2.5	1.64	0.8	0.39	<0.1
REP CK09-112	QC	0.128	4.6	17.0	0.02	11.3	0.002	<1	0.23	0.004	0.11	4.0	0.8	0.06	0.10	33	2.4	1.62	0.8	0.37	<0.1
Reference Materials																					
STD DS7	Standard	0.086	12.9	173.2	1.04	409.4	0.121	40	0.98	0.092	0.43	3.9	2.7	4.19	0.20	180	3.6	1.19	4.7	6.52	0.1
STD DS7	Standard	0.077	13.5	198.9	1.01	395.5	0.124	40	1.01	0.090	0.40	3.9	2.6	4.28	0.19	193	3.7	1.16	4.9	6.10	0.1
STD DS7 Expected		0.08	11.7	179	1.05	370.3	0.124	38.6	0.959	0.089	0.44	3.4	2.5	4.19	0.19	200	3.5	1.08	4.6	6.36	0.1
BLK	Blank	<0.001	<0.5	<0.5	<0.01	<0.5	<0.001	<1	<0.01	<0.001	<0.01	<0.1	<0.1	<0.02	<0.02	<5	<0.1	<0.02	<0.1	<0.02	<0.1
BLK	Blank	<0.001	<0.5	<0.5	<0.01	<0.5	<0.001	<1	<0.01	<0.001	<0.01	<0.1	<0.1	<0.02	<0.02	<5	<0.1	<0.02	<0.1	<0.02	<0.1
Prep Wash																					
G1	Prep Blank	0.084	15.9	9.9	0.52	168.5	0.135	1	0.92	0.085	0.49	<0.1	2.4	0.32	<0.02	<5	0.2	<0.02	4.9	3.15	0.1
G1	Prep Blank	0.082	14.8	9.2	0.54	173.8	0.140	1	0.98	0.095	0.51	0.2	2.4	0.33	<0.02	<5	<0.1	<0.02	5.1	3.29	0.2

This report supersedes all previous preliminary and final reports with this file number dated prior to the date on this certificate. Signature indicates final approval; preliminary reports are unsigned and should be used for reference only.



Acme Analytical Laboratories (Vancouver) Ltd.
 1020 Cordova St. East Vancouver BC V6A 4A3 Canada
 Phone (604) 253-3158 Fax (604) 253-1716

www.acmelab.com

Client: **Kootenay Gold Inc.**
 Suite 960 - 1055 W. Hastings St.
 Vancouver BC V6E 2E9 Canada

Project: MS Peg
 Report Date: August 28, 2009

Page: 1 of 1 Part 3

QUALITY CONTROL REPORT

VAN09003467.1

Method		1F15	1F15	1F15	1F15	1F15	1F15	1F15	1F15	1F15	1F15	1F15	1F15	1F15	1F15	
Analyte		Hf	Nb	Rb	Sn	Ta	Zr	Y	Ce	In	Re	Be	Li	Pd	Pt	
Unit		ppm	ppm	ppm	ppm	ppm	ppm	ppm	ppm	ppm	ppb	ppm	ppm	ppb	ppb	
MDL		0.02	0.02	0.1	0.1	0.05	0.1	0.01	0.1	0.02	1	0.1	0.1	10	2	
Pulp Duplicates																
CK09-112	Rock	0.04	0.20	9.4	8.5	0.09	1.0	3.05	5.5	0.27	<1	0.9	0.6	<10	<2	
REP CK09-112	QC	0.03	0.22	9.3	9.0	0.08	1.0	3.10	5.3	0.28	<1	0.9	0.7	<10	<2	
Reference Materials																
STD DS7	Standard	0.14	0.80	36.0	5.0	<0.05	6.0	5.99	35.1	1.59	3	1.6	28.9	69	37	
STD DS7	Standard	0.13	0.81	33.6	4.7	<0.05	5.7	5.94	37.0	1.63	4	1.8	27.9	62	36	
STD DS7 Expected		0.11	0.71	35.8	4.61		5.4	5.18	36	1.57	4	1.6	29.3	58	37	
BLK	Blank	<0.02	<0.02	<0.1	<0.1	<0.05	<0.1	<0.01	<0.1	<0.02	<1	<0.1	<0.1	<10	<2	
BLK	Blank	<0.02	<0.02	<0.1	<0.1	<0.05	<0.1	<0.01	<0.1	<0.02	<1	<0.1	<0.1	<10	<2	
Prep Wash																
G1	Prep Blank	0.10	0.74	44.6	0.7	<0.05	1.5	5.84	26.7	<0.02	<1	0.4	32.4	<10	<2	
G1	Prep Blank	0.10	0.76	45.8	0.7	<0.05	1.6	6.30	26.7	<0.02	<1	0.2	33.0	<10	<2	



1020 Cordova St. East Vancouver BC V6A 4A3 Canada
Phone (604) 253-3158 Fax (604) 253-1716

Acme Analytical Laboratories (Vancouver) Ltd.

www.acmelab.com

Client: Kootenay Gold Inc.
Suite 960 - 1055 W. Hastings St.
Vancouver BC V6E 2E9 Canada

Submitted By: Email Distribution List
Receiving Lab: Canada-Vancouver
Received: October 05, 2009
Report Date: October 19, 2009
Page: 1 of 2

CERTIFICATE OF ANALYSIS

VAN09004692.1

CLIENT JOB INFORMATION

Project: None Given
Shipment ID:
P.O. Number
Number of Samples: 21

SAMPLE PREPARATION AND ANALYTICAL PROCEDURES

Method Code	Number of Samples	Code Description	Test Wgt (g)	Report Status	Lab
R200-250	19	Crush, split and pulverize 250 g rock to 200 mesh			VAN
1DX2	19	1:1:1 Aqua Regia digestion ICP-MS analysis	15	Completed	VAN

SAMPLE DISPOSAL

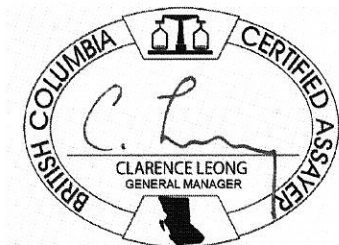
STOR-PLP Store After 90 days Invoice for Storage
DISP-RJT Dispose of Reject After 90 days

ADDITIONAL COMMENTS

Acme does not accept responsibility for samples left at the laboratory after 90 days without prior written instructions for sample storage or return.

Invoice To: Kootenay Gold Inc.
Suite 960 - 1055 W. Hastings St.
Vancouver BC V6E 2E9
Canada

CC:



This report supersedes all previous preliminary and final reports with this file number dated prior to the date on this certificate. Signature indicates final approval; preliminary reports are unsigned and should be used for reference only. All results are considered the confidential property of the client. Acme assumes the liabilities for actual cost of analysis only. *** asterisk indicates that an analytical result could not be provided due to unusually high levels of interference from other elements.



Acme Analytical Laboratories (Vancouver) Ltd.

1020 Cordova St. East Vancouver BC V6A 4A3 Canada
 Phone (604) 253-3158 Fax (604) 253-1716

www.acmelab.com

Client: **Kootenay Gold Inc.**
 Suite 960 - 1055 W. Hastings St.
 Vancouver BC V6E 2E9 Canada

Project: None Given
 Report Date: October 19, 2009

Page: 2 of 2 Part 1

CERTIFICATE OF ANALYSIS

VAN09004692.1

Method	WGHT	1DX15	1DX15	1DX15	1DX15	1DX15	1DX15	1DX15	1DX15	1DX15	1DX15	1DX15	1DX15	1DX15	1DX15	1DX15	1DX15	1DX15	1DX15	1DX15	1DX15
Analyte	Wgt	Mo	Cu	Pb	Zn	Ag	Ni	Co	Mn	Fe	As	U	Au	Th	Sr	Cd	Sb	Bi	V	Ca	
Unit	kg	ppm	ppm	ppm	ppm	ppm	ppm	ppm	ppm	%	ppm	ppm	ppb	ppm	ppm	ppm	ppm	ppm	ppm	%	
MDL	0.01	0.1	0.1	0.1	1	0.1	0.1	0.1	1	0.01	0.5	0.1	0.5	0.1	1	0.1	0.1	0.1	2	0.01	
CK09-121	Rock	L.N.R.	L.N.R.	L.N.R.	L.N.R.	L.N.R.	L.N.R.	L.N.R.	L.N.R.	L.N.R.	L.N.R.	L.N.R.	L.N.R.	L.N.R.	L.N.R.	L.N.R.	L.N.R.	L.N.R.	L.N.R.	L.N.R.	L.N.R.
CK09-122	Rock	L.N.R.	L.N.R.	L.N.R.	L.N.R.	L.N.R.	L.N.R.	L.N.R.	L.N.R.	L.N.R.	L.N.R.	L.N.R.	L.N.R.	L.N.R.	L.N.R.	L.N.R.	L.N.R.	L.N.R.	L.N.R.	L.N.R.	L.N.R.
CK09-123	Rock	0.54	0.5	5.6	92.7	3	0.3	1.0	0.6	25	0.80	0.6	0.6	2.1	7.6	13	<0.1	0.1	1.1	4	0.02
CK09-124	Rock	0.43	2.1	177.5	91.3	295	<0.1	18.5	9.2	142	33.04	680.8	1.0	2.5	11.2	2	0.7	0.3	0.3	4	0.01
CK09-125	Rock	0.65	1.1	57.3	60.0	68	0.2	3.1	2.1	88	5.36	22.0	1.3	2.6	7.3	30	0.4	0.4	0.7	16	0.25
CK09-126	Rock	0.84	1.4	331.1	56.6	1713	0.3	107.8	112.9	268	16.27	17.7	1.1	2.4	7.2	7	20.1	0.1	2.0	14	0.38
CK09-127	Rock	0.74	1.4	63.0	46.3	100	0.1	6.6	3.1	47	25.75	1591	0.7	3.1	12.0	1	0.1	0.9	0.6	5	0.02
CK09-128	Rock	0.61	1.0	54.3	117.4	109	0.2	2.8	1.2	44	16.77	1771	1.0	1.9	11.4	2	0.4	0.5	0.6	3	<0.01
CK09-129	Rock	0.94	0.8	21.3	98.6	234	0.8	2.0	1.8	74	1.23	13.0	1.4	18.4	8.1	53	2.5	0.3	9.5	6	0.46
CK09-130	Rock	0.69	1.5	55.5	50.5	703	0.3	9.6	7.4	76	4.04	20.9	1.5	1.8	7.8	49	2.6	0.2	2.6	6	0.26
CK09-131	Rock	0.65	2.7	33.3	672.4	340	0.7	7.7	3.8	86	5.04	75.0	0.9	0.7	2.2	6	0.9	1.1	1.7	6	0.08
CK09-132	Rock	0.90	0.2	2.8	2.8	3	<0.1	1.2	0.6	21	0.39	775.2	0.1	0.9	1.0	3	<0.1	0.2	<0.1	<2	<0.01
CK09-133	Rock	0.75	1.8	60.2	45.6	59	0.5	8.2	8.1	83	26.36	1307	1.1	6.4	6.5	7	0.3	1.2	4.3	5	0.01
CK09-134	Rock	0.55	3.8	51.1	7.6	8	<0.1	1.1	0.8	147	3.81	17.9	1.3	5.9	7.8	24	<0.1	0.1	5.0	19	0.27
CK09-135	Rock	0.70	2.8	12.3	8.1	4	<0.1	0.7	1.0	104	0.91	9.4	1.8	6.2	7.9	22	<0.1	0.2	3.3	7	0.51
CK09-136	Rock	0.76	0.4	6.0	18.0	18	0.4	1.3	0.5	32	0.35	21.6	0.8	75.8	2.0	1	0.1	0.2	113.8	<2	<0.01
CK09-137	Rock	1.03	0.2	1.4	18.5	3	<0.1	1.8	2.3	90	0.19	8.7	3.6	<0.5	18.6	18	<0.1	<0.1	<0.1	<2	0.31
CK09-138	Rock	0.82	0.2	1.3	4.2	4	<0.1	2.6	1.8	34	0.19	1.4	0.7	<0.5	2.1	8	<0.1	<0.1	0.5	<2	0.05
CK09-139	Rock	0.76	0.2	38.0	3663	62	5.8	0.5	0.2	62	0.61	112.7	0.5	<0.5	0.1	8	0.2	1.0	11.4	<2	0.10
CK09-140	Rock	0.76	10.0	369.3	254.6	38	1.4	84.9	96.7	170	16.03	373.2	16.9	5640	1.2	6	<0.1	0.2	5.5	7	0.08
CK09-141	Rock	0.53	9.1	317.9	224.1	31	2.3	101.6	80.0	341	12.85	32.2	10.6	21983	3.6	6	0.2	0.3	1.8	6	0.05

This report supersedes all previous preliminary and final reports with this file number dated prior to the date on this certificate. Signature indicates final approval; preliminary reports are unsigned and should be used for reference only.



Acme Analytical Laboratories (Vancouver) Ltd.

1020 Cordova St. East Vancouver BC V6A 4A3 Canada
 Phone (604) 253-3158 Fax (604) 253-1716

www.acmelab.com

Client: **Kootenay Gold Inc.**
 Suite 960 - 1055 W. Hastings St.
 Vancouver BC V6E 2E9 Canada

Project: None Given
 Report Date: October 19, 2009

Page: 2 of 2 Part 2

CERTIFICATE OF ANALYSIS

VAN09004692.1

Method	1DX15	1DX15	1DX15	1DX15	1DX15	1DX15	1DX15	1DX15	1DX15	1DX15	1DX15	1DX15	1DX15	1DX15	1DX15	1DX15	1DX15	1DX15
Analyte	P	La	Cr	Mg	Ba	Ti	B	Al	Na	K	W	Hg	Sc	Tl	S	Ga	Se	
Unit	%	ppm	ppm	%	ppm	%	ppm	%	%	%	ppm	ppm	ppm	ppm	%	ppm	ppm	
MDL	0.001	1	1	0.01	1	0.001	1	0.01	0.001	0.01	0.1	0.01	0.1	0.1	0.05	1	0.5	
CK09-121	Rock	L.N.R.	L.N.R.	L.N.R.	L.N.R.	L.N.R.	L.N.R.	L.N.R.	L.N.R.	L.N.R.	L.N.R.	L.N.R.	L.N.R.	L.N.R.	L.N.R.	L.N.R.	L.N.R.	
CK09-122	Rock	L.N.R.	L.N.R.	L.N.R.	L.N.R.	L.N.R.	L.N.R.	L.N.R.	L.N.R.	L.N.R.	L.N.R.	L.N.R.	L.N.R.	L.N.R.	L.N.R.	L.N.R.	L.N.R.	
CK09-123	Rock	0.015	18	7	0.03	104	0.156	<1	0.27	0.028	0.16	<0.1	<0.01	0.7	<0.1	0.07	1	<0.5
CK09-124	Rock	0.049	15	4	0.03	29	0.001	2	0.88	0.004	0.09	0.1	<0.01	1.6	<0.1	0.23	2	<0.5
CK09-125	Rock	0.077	29	15	0.21	31	0.136	<1	0.93	0.012	0.14	<0.1	<0.01	1.9	0.1	0.22	4	2.0
CK09-126	Rock	0.095	39	15	0.71	13	0.080	<1	1.14	0.016	0.36	0.1	<0.01	2.2	0.3	>10	3	5.0
CK09-127	Rock	0.043	17	3	0.03	37	0.002	3	0.74	0.004	0.19	0.1	<0.01	1.2	<0.1	0.30	1	<0.5
CK09-128	Rock	0.040	22	3	0.03	39	0.002	1	0.54	0.003	0.17	0.1	<0.01	1.1	<0.1	0.10	1	<0.5
CK09-129	Rock	0.052	24	10	0.05	11	0.075	<1	0.45	0.008	0.04	7.9	0.02	1.1	<0.1	0.20	2	<0.5
CK09-130	Rock	0.050	27	9	0.08	11	0.046	1	0.48	0.004	0.08	0.4	<0.01	0.8	<0.1	1.39	3	0.7
CK09-131	Rock	0.030	3	10	0.01	3	0.023	<1	0.36	0.002	0.02	0.1	0.01	1.4	<0.1	<0.05	1	<0.5
CK09-132	Rock	0.001	3	14	<0.01	31	0.001	2	0.06	0.003	0.02	<0.1	<0.01	0.3	<0.1	<0.05	<1	<0.5
CK09-133	Rock	0.130	15	6	0.03	19	0.003	2	0.62	0.003	0.09	0.1	0.01	1.0	<0.1	<0.05	1	<0.5
CK09-134	Rock	0.061	16	20	0.22	7	0.115	<1	0.65	0.007	0.03	0.1	<0.01	1.9	<0.1	0.17	4	0.7
CK09-135	Rock	0.023	21	12	0.09	11	0.099	<1	0.59	0.007	0.03	<0.1	<0.01	2.2	<0.1	<0.05	3	0.6
CK09-136	Rock	0.004	2	13	<0.01	2	<0.001	<1	0.07	0.003	0.05	0.2	<0.01	<0.1	<0.1	<0.05	<1	<0.5
CK09-137	Rock	0.159	54	6	0.02	7	0.004	78	0.20	0.010	0.08	0.1	<0.01	0.6	<0.1	<0.05	<1	<0.5
CK09-138	Rock	0.030	8	14	0.09	4	0.004	4	0.14	0.004	0.08	0.2	<0.01	0.2	0.1	<0.05	<1	<0.5
CK09-139	Rock	0.119	<1	4	<0.01	12	<0.001	4	0.35	0.007	0.30	0.2	<0.01	<0.1	0.1	0.07	<1	<0.5
CK09-140	Rock	0.041	4	10	0.28	23	0.002	<1	0.80	0.003	0.08	0.9	<0.01	1.1	<0.1	0.34	2	2.0
CK09-141	Rock	0.021	5	8	0.04	28	0.001	1	0.25	0.012	0.09	0.9	<0.01	1.6	<0.1	0.26	<1	1.0

This report supersedes all previous preliminary and final reports with this file number dated prior to the date on this certificate. Signature indicates final approval, preliminary reports are unsigned and should be used for reference only.



Acme Analytical Laboratories (Vancouver) Ltd.

1020 Cordova St. East Vancouver BC V6A 4A3 Canada

Phone (604) 253-3158 Fax (604) 253-1716

www.acmelab.com

Client: **Kootenay Gold Inc.**
Suite 960 - 1055 W. Hastings St.
Vancouver BC V6E 2E9 Canada

Project: None Given

Report Date: October 19, 2009

Page: 1 of 1 Part 1

QUALITY CONTROL REPORT

VAN09004692.1

Method	WGHT	1DX15	1DX15	1DX15	1DX15	1DX15	1DX15	1DX15	1DX15	1DX15	1DX15	1DX15	1DX15	1DX15	1DX15	1DX15	1DX15	1DX15	1DX15	1DX15	1DX15
Analyte	Wgt	Mo	Cu	Pb	Zn	Ag	Ni	Co	Mn	Fe	As	U	Au	Th	Sr	Cd	Sb	Bi	V	Ca	
Unit	kg	ppm	ppm	ppm	ppm	ppm	ppm	ppm	ppm	%	ppm	ppm	ppb	ppm	ppm	ppm	ppm	ppm	ppm	ppm	
MDL	0.01	0.1	0.1	0.1	1	0.1	0.1	0.1	1	0.01	0.5	0.1	0.5	0.1	1	0.1	0.1	0.1	2	0.01	
Pulp Duplicates																					
CK09-131	Rock	0.65	2.7	33.3	672.4	340	0.7	7.7	3.8	86	5.04	75.0	0.9	0.7	2.2	6	0.9	1.1	1.7	6	0.08
REP CK09-131	QC		2.8	33.0	704.2	348	0.7	8.8	3.8	86	5.21	76.7	1.0	<0.5	2.3	6	0.9	1.1	1.8	6	0.09
Reference Materials																					
STD DS7	Standard		20.4	107.7	68.9	382	0.8	55.0	8.9	590	2.31	49.7	4.8	56.4	4.7	74	6.1	5.7	4.5	79	0.93
STD DS7	Standard		20.7	111.9	71.9	391	0.8	56.6	9.0	612	2.39	52.8	4.9	66.6	4.7	80	5.9	6.1	4.5	82	0.96
STD DS7 Expected			20.5	109	70.6	411	0.9	56	9.7	627	2.39	48.2	4.9	70	4.4	69	6.4	4.6	4.5	84	0.93
BLK	Blank		<0.1	<0.1	<0.1	<1	<0.1	<0.1	<0.1	<1	<0.01	<0.5	<0.1	<0.5	<0.1	<1	<0.1	<0.1	<0.1	<2	<0.01
Prep Wash																					
G1	Prep Blank	<0.01	0.2	3.2	8.8	48	<0.1	3.9	4.4	529	1.87	<0.5	1.5	0.6	3.7	54	<0.1	<0.1	0.1	36	0.47
G1	Prep Blank	<0.01	0.1	2.7	8.6	47	<0.1	3.6	4.2	518	1.81	<0.5	1.6	<0.5	3.9	51	<0.1	<0.1	<0.1	35	0.47



Acme Analytical Laboratories (Vancouver) Ltd.
 1020 Cordova St. East Vancouver BC V6A 4A3 Canada
 Phone (604) 253-3158 Fax (604) 253-1716

www.acmelab.com

Client: **Kootenay Gold Inc.**
 Suite 960 - 1055 W. Hastings St.
 Vancouver BC V6E 2E9 Canada

Project: None Given
 Report Date: October 19, 2009

Page: 1 of 1 Part 2

QUALITY CONTROL REPORT

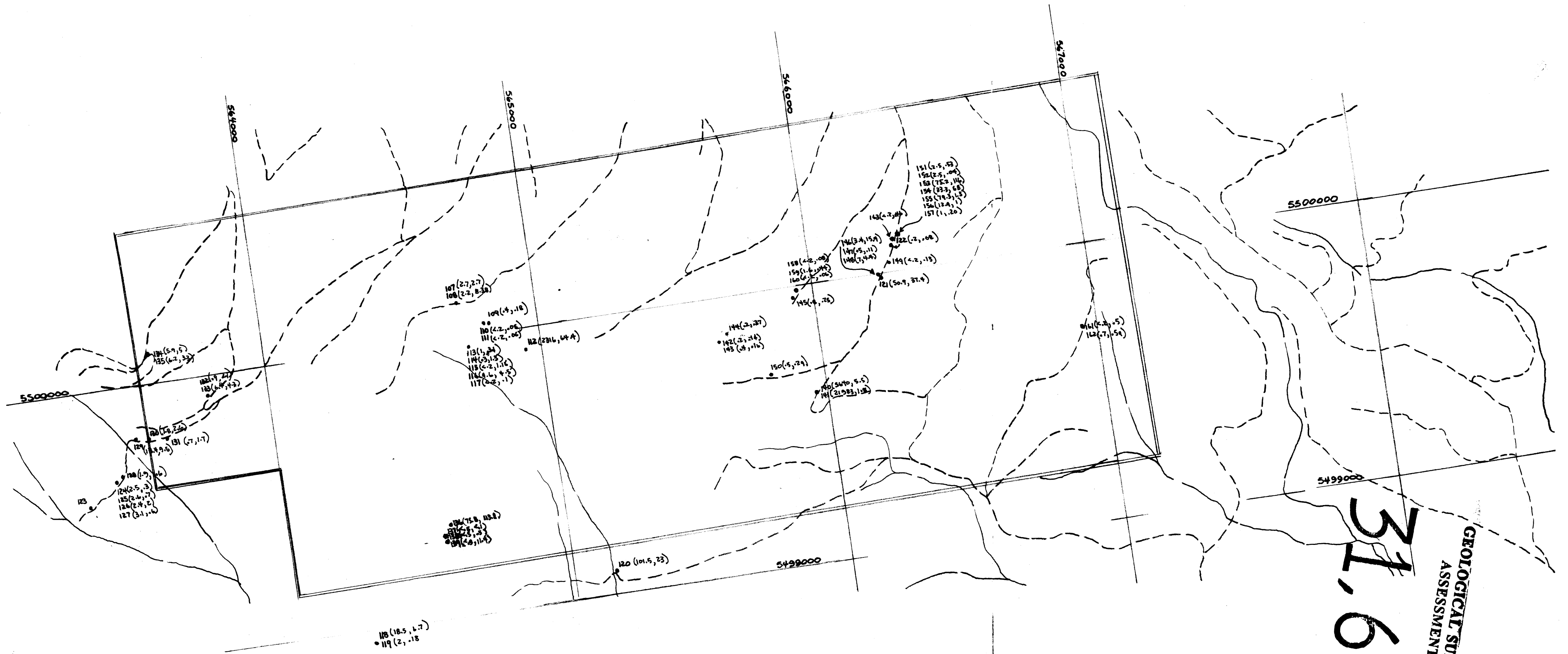
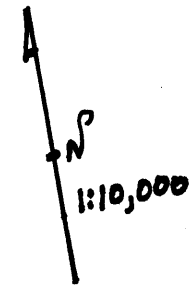
VAN09004692.1

Method	Analyte	Unit	MDL	1DX15 P	1DX15 La	1DX15 Cr	1DX15 Mg	1DX15 Ba	1DX15 Ti	1DX15 B	1DX15 Al	1DX15 Na	1DX15 K	1DX15 W	1DX15 Hg	1DX15 Sc	1DX15 Tl	1DX15 S	1DX15 Ga	1DX15 Se
				0.001	1	1	0.01	1	0.001	1	0.01	0.001	0.01	0.1	0.01	0.1	0.1	0.05	1	0.5
Pulp Duplicates																				
CK09-131	Rock			0.030	3	10	0.01	3	0.023	<1	0.36	0.002	0.02	0.1	0.01	1.4	<0.1	<0.05	1	<0.5
REP CK09-131	QC			0.031	3	11	0.01	3	0.024	<1	0.38	0.002	0.02	0.1	<0.01	1.5	<0.1	<0.05	1	<0.5
Reference Materials																				
STD DS7	Standard			0.072	12	198	1.02	378	0.120	36	1.02	0.093	0.43	3.5	0.17	2.3	3.9	0.19	4	3.3
STD DS7	Standard			0.075	13	207	1.03	395	0.125	40	1.04	0.096	0.44	3.7	0.20	2.4	4.0	0.19	4	3.9
STD DS7 Expected				0.08	12	179	1.05	370	0.124	39	0.959	0.089	0.44	3.4	0.2	2.5	4.2	0.19	5	3.5
BLK	Blank			<0.001	<1	<1	<0.01	<1	<0.001	<1	<0.01	<0.001	<0.01	<0.1	<0.01	<0.1	<0.1	<0.05	<1	<0.5
Prep Wash																				
G1	Prep Blank			0.077	7	9	0.58	417	0.134	<1	0.93	0.069	0.52	<0.1	<0.01	1.8	0.4	<0.05	5	<0.5
G1	Prep Blank			0.081	6	9	0.58	424	0.127	<1	0.89	0.055	0.51	<0.1	<0.01	1.7	0.4	<0.05	5	<0.5

This report supersedes all previous preliminary and final reports with this file number dated prior to the date on this certificate. Signature indicates final approval; preliminary reports are unsigned and should be used for reference only.

FIGURE #3

MS PEG PROPERTY
ROCK GEOCHEMISTRY SAMPLE LOCATION & RESULTS
• 140 (5640, 8.5)



31,614

GEOLOGICAL SURVEY BRANCH
ASSESSMENT REPORT