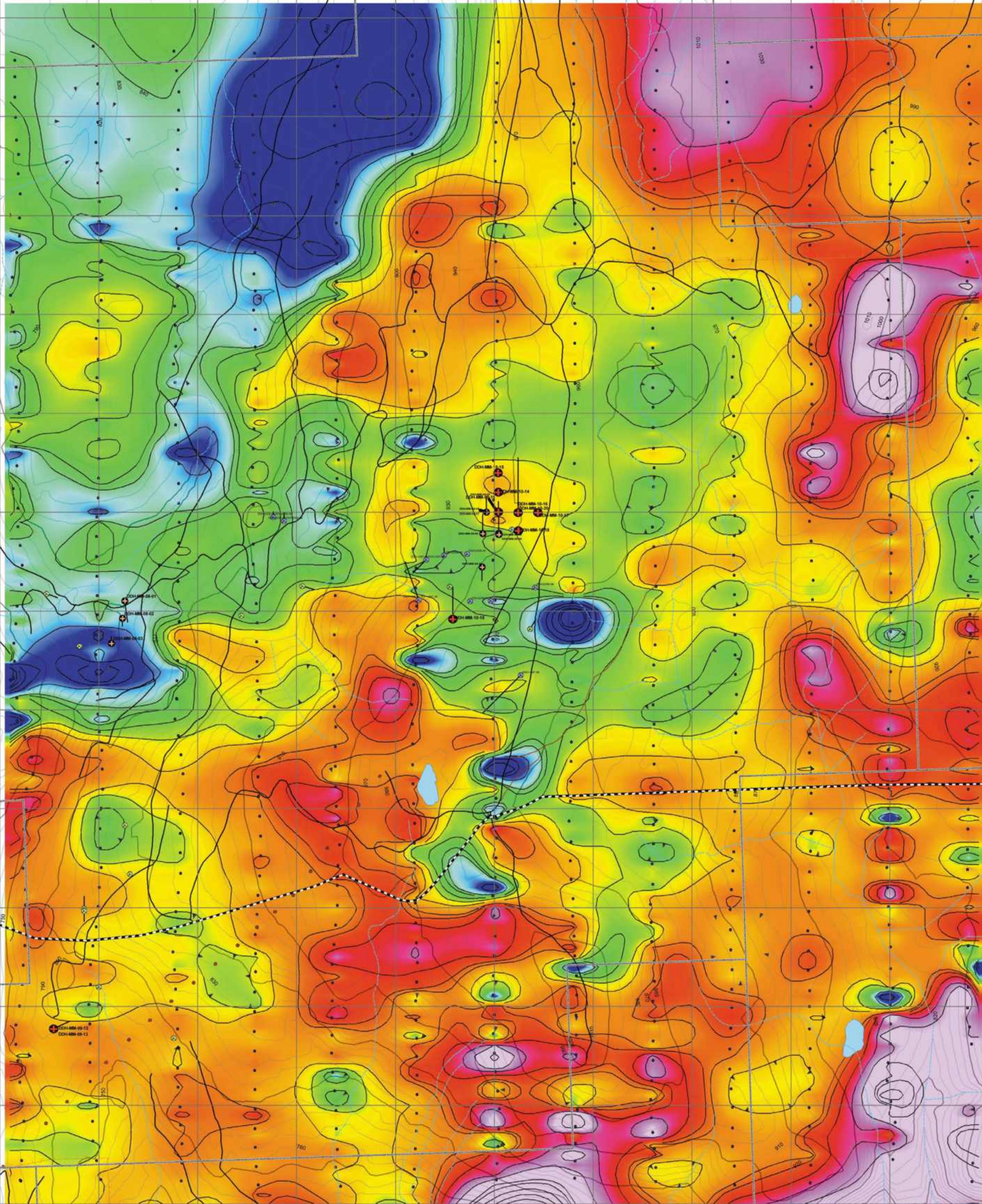


**QUANTEC TITAN 24  
RESISTIVITY SURVEY  
MINER MOUNTAIN  
PRINCETON B.C.**



N



**Legend**

- Drill Holes**
- Other Holes
- Clinex Copper 1963
- Bethlehem 1973
- Nuts 1987-2002
- Segs 2008
- Segs 2009-2010
- Drill Traces
- IP Survey Points
- Resistivity**
- Value
- High: 4.43726
- Low: 0
- Fence
- Tracks
- Wetland
- Lakes and Rivers
- Highres Contours**
- Index Contours
- Supplementary Contour

**Map 1**

**Map scale 1:5,000**

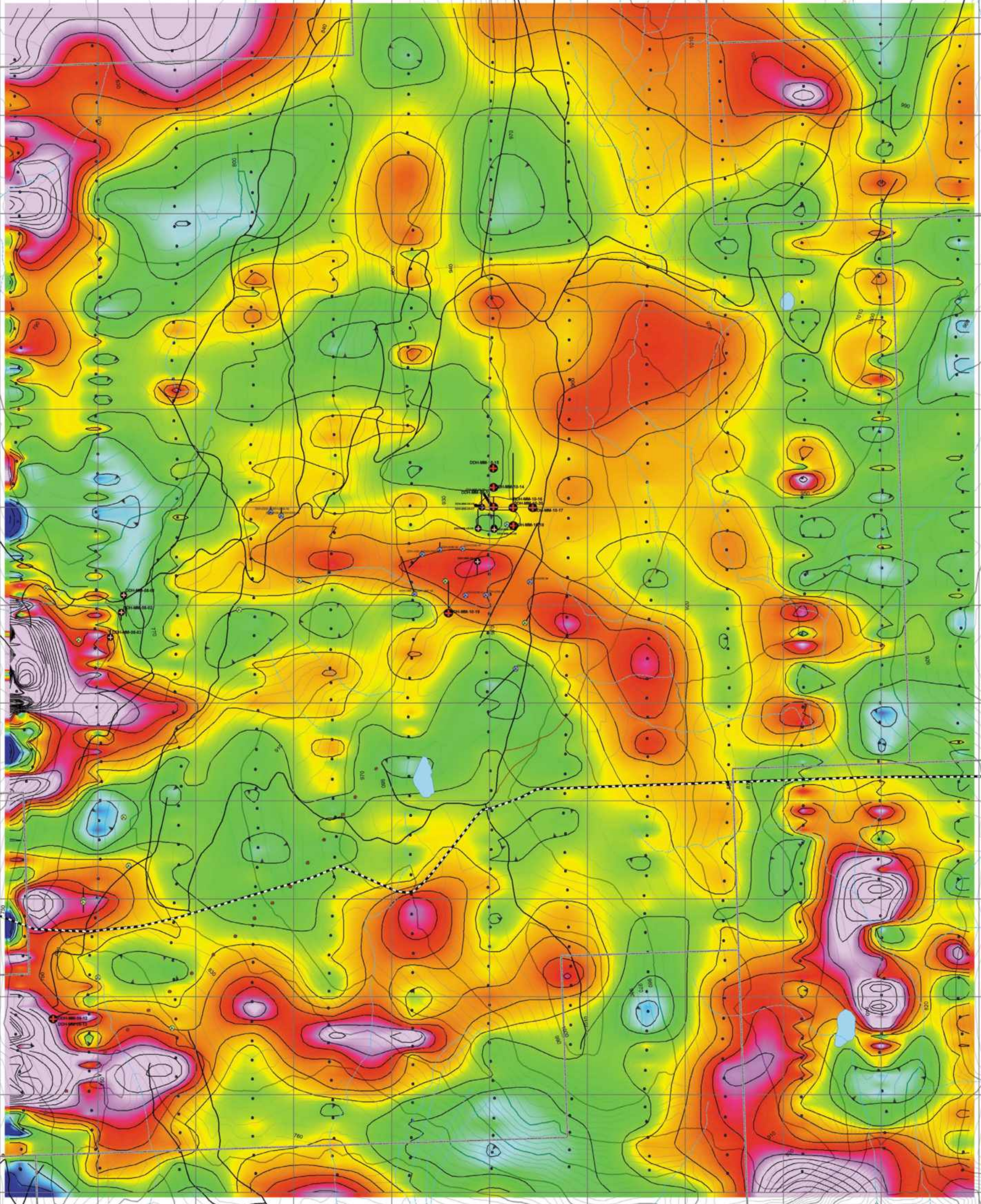
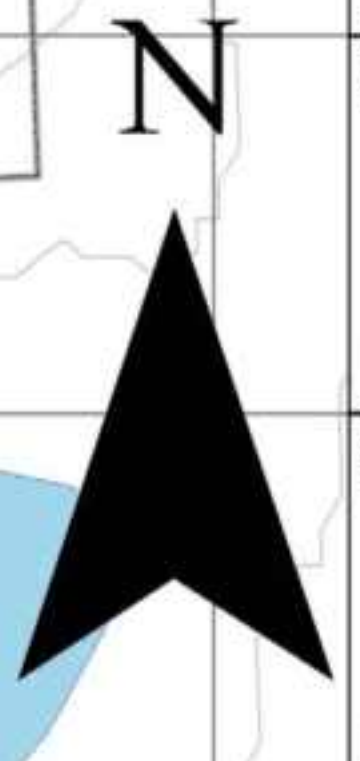
BC Geological Survey  
Assessment Report  
31730e

Sept 2010

Map Base - TRIM - 1:20000  
UTM Zone 10 - NAD83  
Contours in Metres A.S.L



**QUANTEC TITAN 24  
CHARGEABILITY SURVEY  
MINER MOUNTAIN  
PRINCETON B.C.**



- Legend**
- Drill Holes**
    - Other Holes
    - Other Copper 1963
    - Batholites 1973
    - Nadar 1987 - 2002
    - Sego 2008
    - Sego 2009 - 2010
    - DH Traces
    - IP Survey Points
  - Chargeability Value**
    - High - 42.8952
    - Low - -3.38119
  - Highres Contours**
    - Index Contours
    - Supplementary Contour
  - Other Features**
    - Pipeline
    - Fence
    - Tracks
    - Wildland
    - Lakes and Rivers

**Map 2**

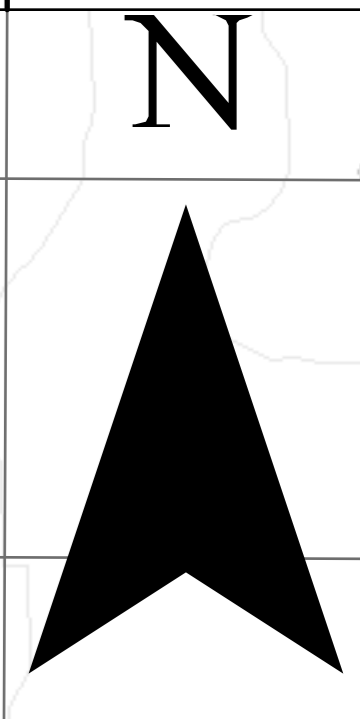
**Map scale 1:5,000**

Sept 2010

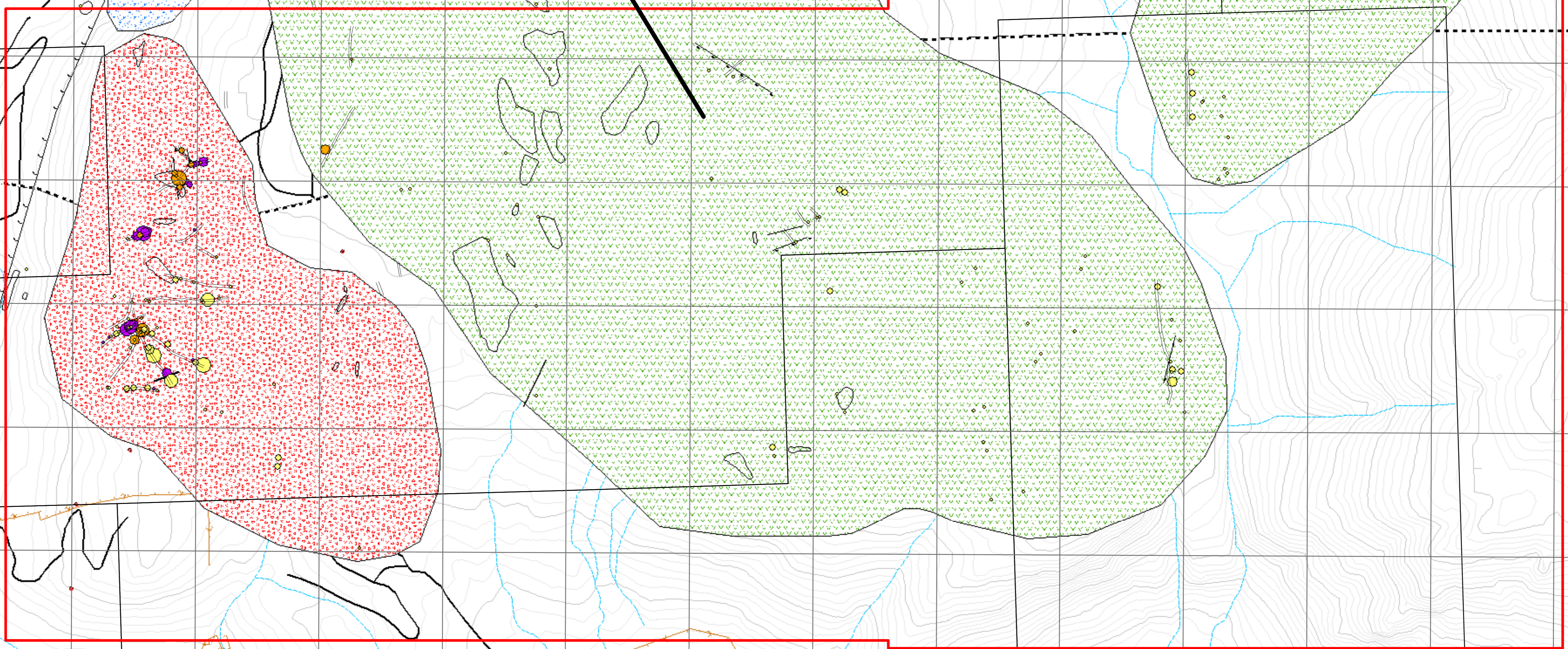
Map Base - TRIM - 1:20000  
UTM Zone 10 - NAD83  
Contours in Metres A.S.L



**PROPERTY GEOLOGY  
MINER MOUNTAIN  
PRINCETON B.C.**



# Areas of 2009 Mapping



**Legend**

**Bornite**  
Percent\_1

- 0.01-0.25
- 0.26-1
- 1.01-3
- 3.01-7.5
- 7.51-17.5

**Chalcopyrite**  
Percentage

- 0.1-0.2
- 0.21-0.75
- 0.76-1.5
- 1.51-2.5
- 2.51-4

**Pyrite**  
Percentage

- 0.10-0.75
- 0.76-2.50
- 2.51-5.00
- 5.01-12.50
- 12.51-20.00

**Fault**  
Fault\_Type(Teeth on Hanging Wall)

- Unknown
- Low Angle Fault
- High Angle Fault
- Normal Fault

**Generalized Property Geology**  
Nicola Group(Upper Triassic)

- Microdiorite
- Volcanics
- Volcanics & Sediments
- Outcrop
- Trace
- Fence
- Footpath
- Powerline

**Highes Contours**  
CONTOUR

- Index Contour
- Supplementary Contour

**Lakes and Rivers**

- Wetland
- Channel

# Map 3

Map scale 1:5,000

Sept 2010

Map Base - TRIM - 1:20000  
UTM Zone 10 - NAD83  
Contours in Metres A.S.L

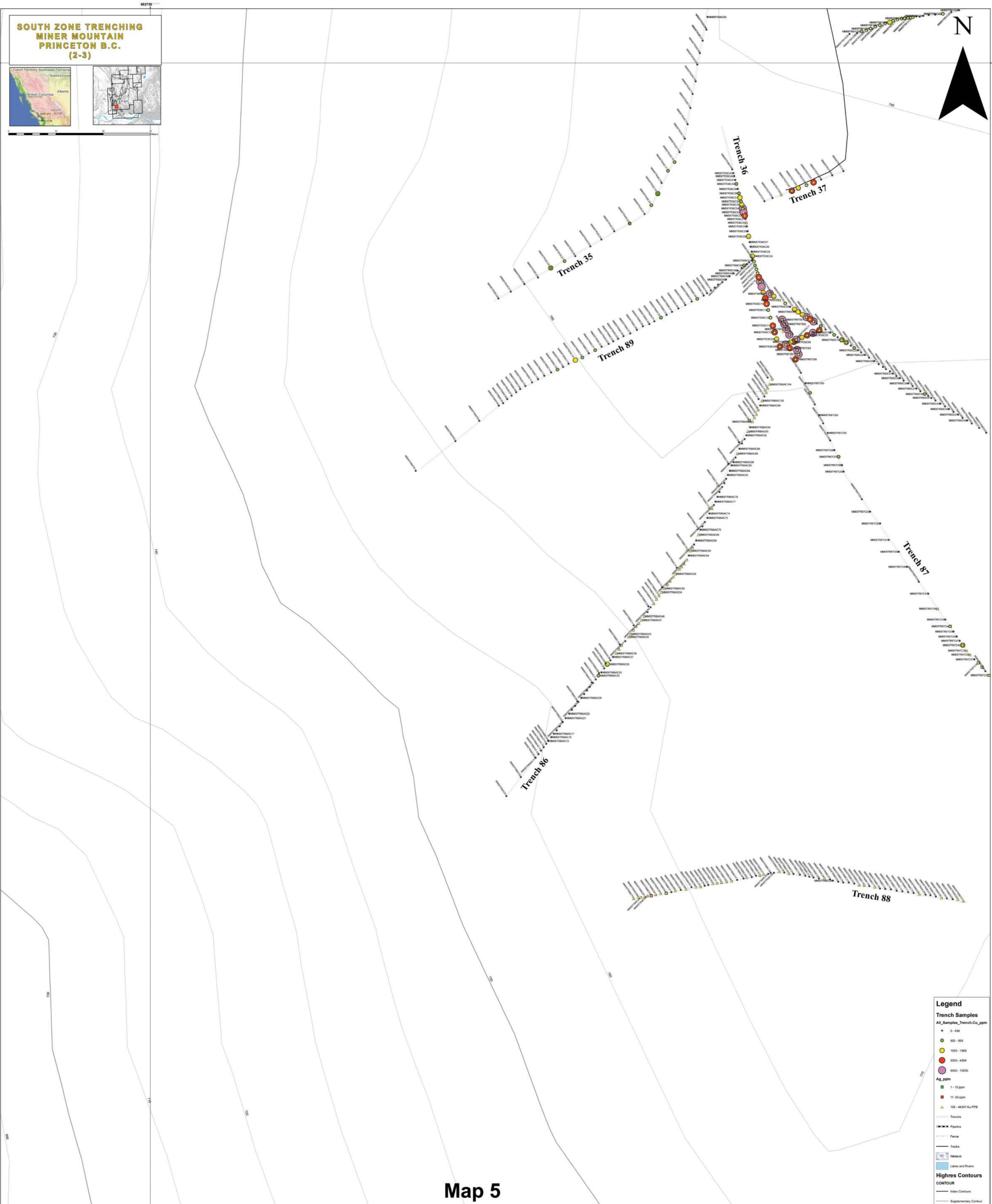
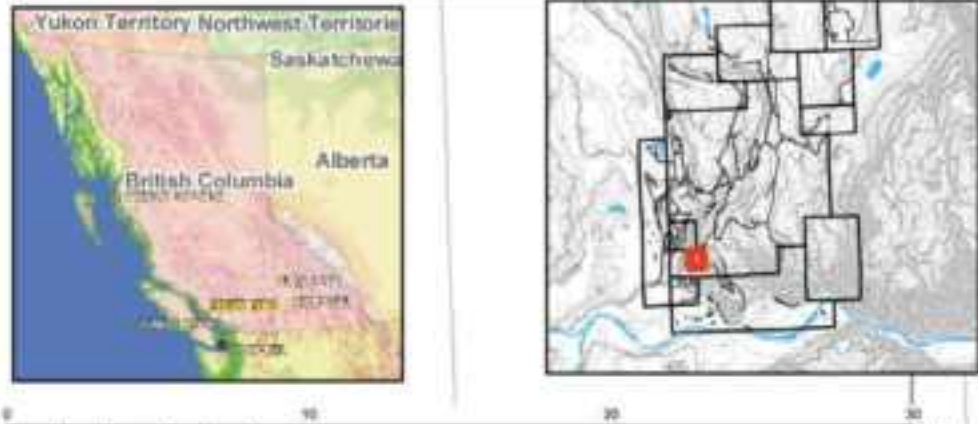
TSX-V: SGZ  
**SE GO!**  
RESOURCES INC.  
www.segoresources.com  
604-682-2933/1-866-683-2933







**SOUTH ZONE TRENCHING  
MINER MOUNTAIN  
PRINCETON B.C.  
(2-3)**



**Legend**

**Trench Samples**

All\_Samples\_Trench\_Cu\_ppm

- 0 - 499
- 500 - 999
- 1000 - 1999
- 2000 - 4999
- 5000 - 10000

Ag\_ppm

- 1 - 10 ppm
- 11 - 50 ppm
- 100 - 44247 Au PPS

Trenches

Pipeline

Fence

Tracks

Wellhead

Lakes and Rivers

**Highres Contours**

CONTOUR

- Index Contours
- Supplementary Contour

**Map 5**

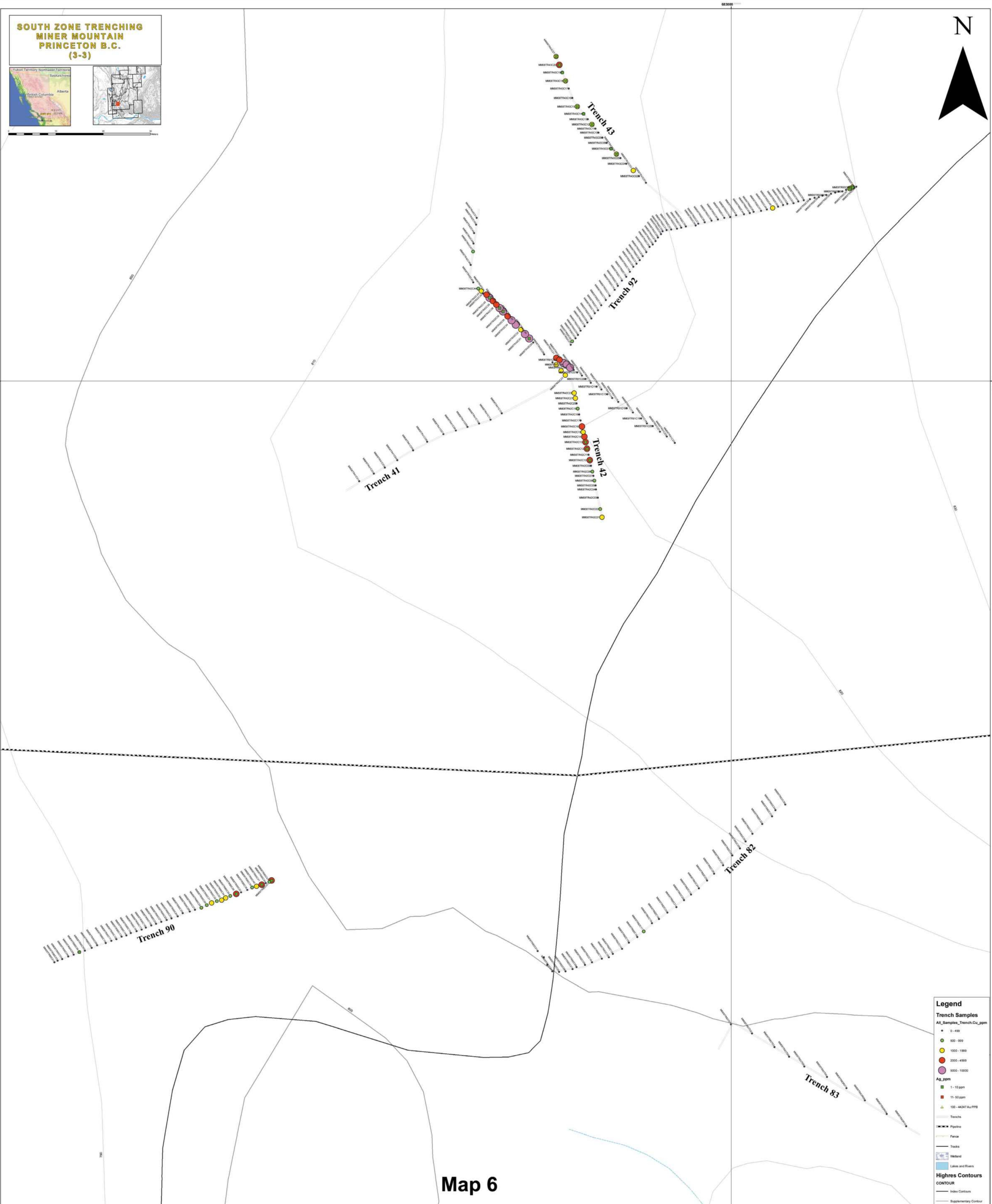
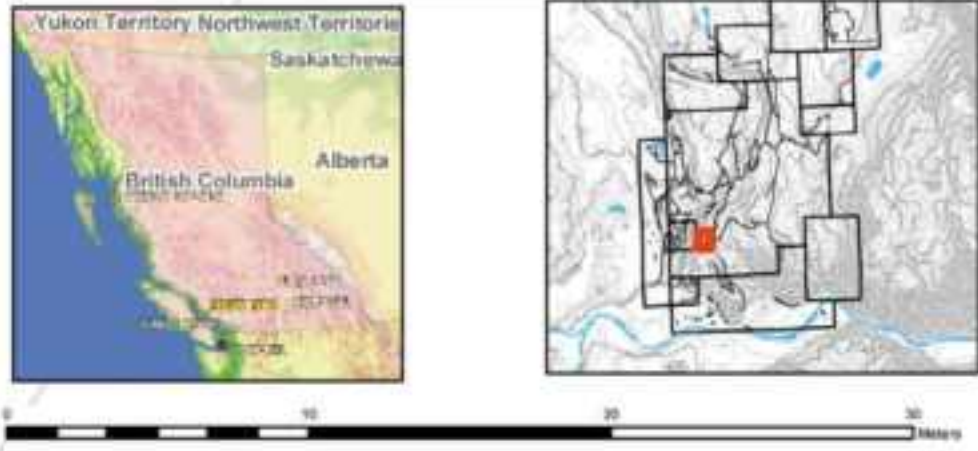
**Map scale 1:250**

Sept 2010

Map Base - TRIM - 1:20000  
UTM Zone 10 - NAD83  
Contours in Metres A.S.L



**SOUTH ZONE TRENCHING  
MINER MOUNTAIN  
PRINCETON B.C.  
(3-3)**



**Legend**

**Trench Samples**

All\_Samples\_Trench\_Cu\_ppm

- 0 - 499
- 500 - 999
- 1000 - 1999
- 2000 - 4999
- 5000 - 10000

Ag\_ppm

- 1 - 10 ppm
- 11 - 50 ppm

100 - 44247 Au/PPB

Trenches

Pipeline

Fence

Tracks

Wellhead

Lakes and Rivers

**Highest Contours**

CONTOUR

- Index Contours
- Supplementary Contour

**Map 6**

**Map scale 1:250**

Sept 2010

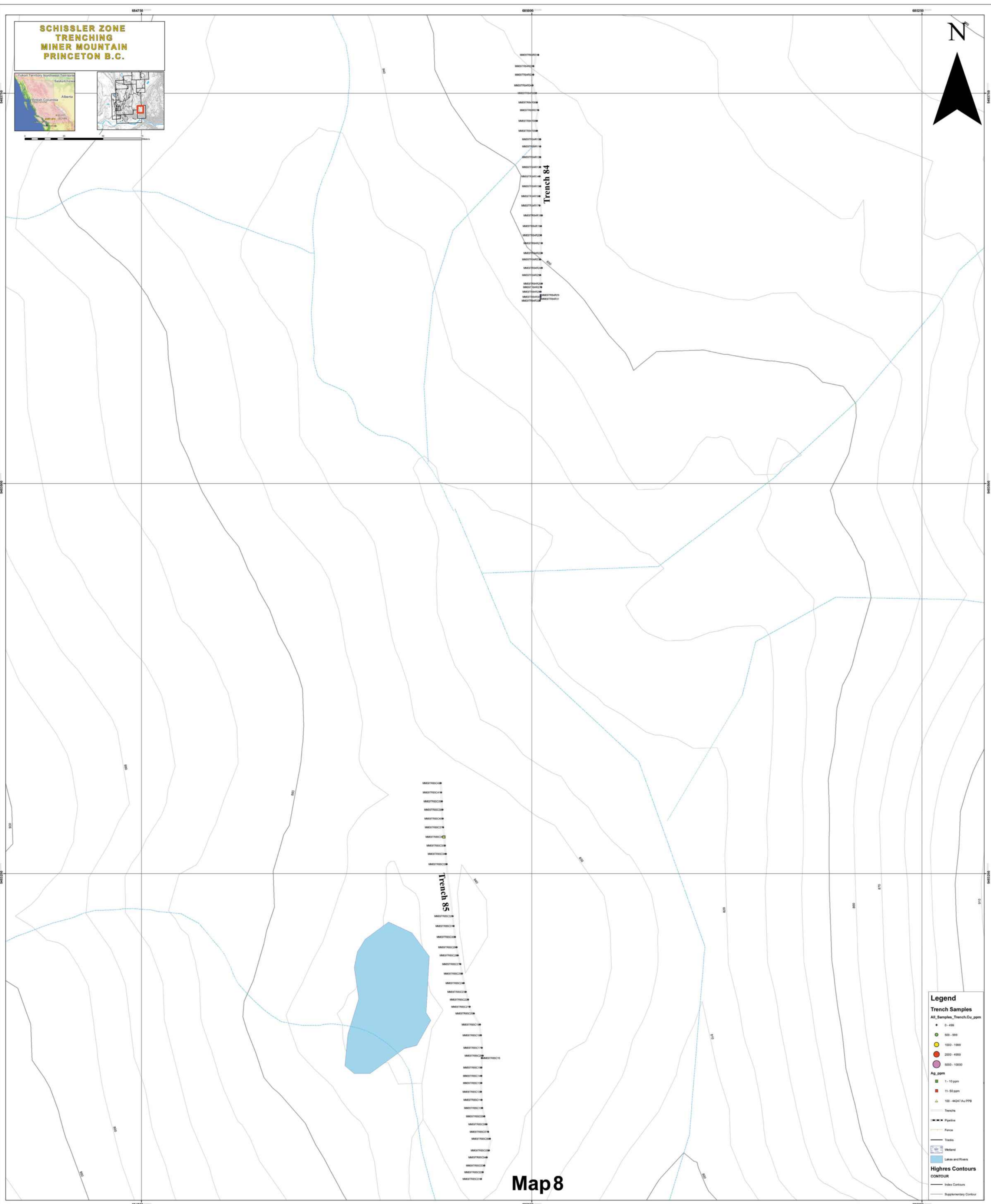
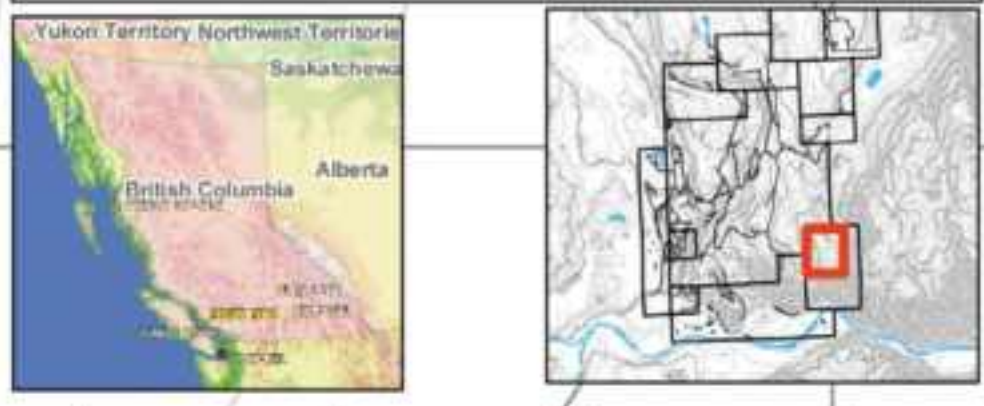
Map Base - TRIM - 1:20000  
UTM Zone 10 - NAD83  
Contours in Metres A.S.L.







**SCHISLER ZONE  
TRENCHING  
MINER MOUNTAIN  
PRINCETON B.C.**



**Legend**

**Trench Samples**  
 All\_Samples\_Trench\_Cu\_ppm  
 ● 0 - 499  
 ● 500 - 999  
 ● 1000 - 1999  
 ● 2000 - 4999  
 ● 5000 - 10000

**Ag\_ppm**  
 ■ 1 - 10 ppm  
 ■ 11 - 50 ppm  
 ▲ 100 - 44247 Au/PPM

— Trenches  
 — Pipeline  
 — Fence  
 — Tracks  
 — Wetland  
 — Lakes and Rivers

**Highest Contours**  
 CONTOUR  
 — Index Contours  
 — Supplementary Contour

**Map 8**

**Map scale 1:750**

Sept 2010

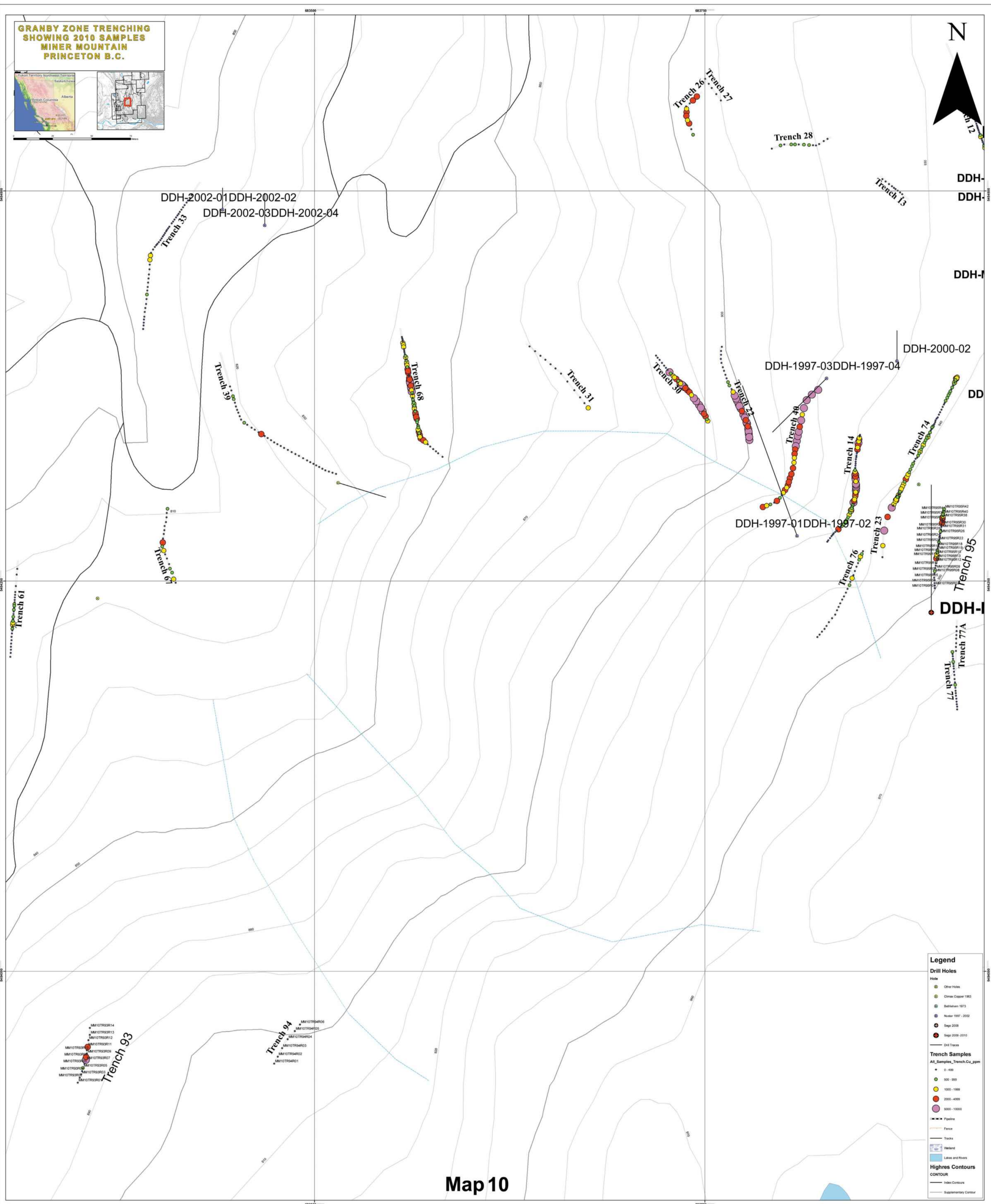
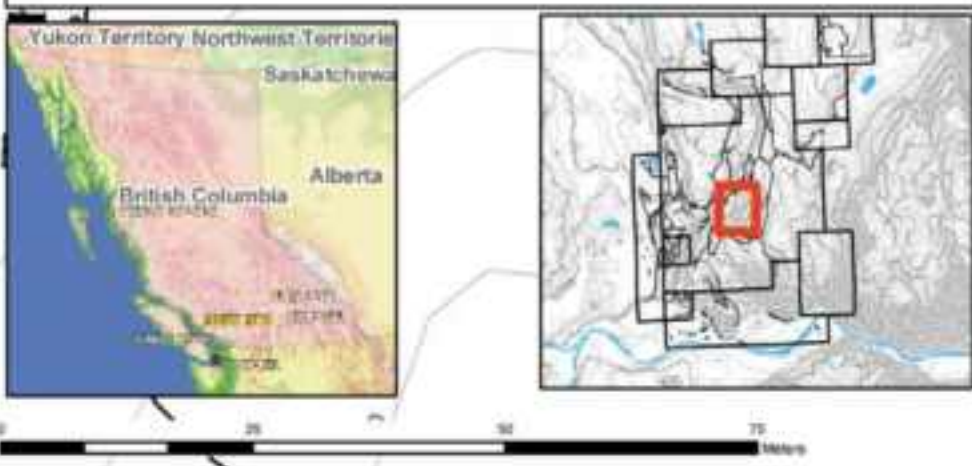
Map Base - TRIM - 1:20000  
 UTM Zone 10 - NAD83  
 Contours in Metres A.S.L.







**GRANBY ZONE TRENCHING  
SHOWING 2010 SAMPLES  
MINER MOUNTAIN  
PRINCETON B.C.**



- Legend**
- Drill Holes**
- Hole
  - Other Holes
  - Clonk Copper 1963
  - Bellman 1973
  - Nadar 1997-2002
  - Sept 2008
  - Sept 2009-2010
  - Drill Traces
- Trench Samples**
- All\_Samples\_Trench\_Cu\_gpm
- 0-499
  - 500-999
  - 1000-1999
  - 2000-4999
  - 5000-10000
- Highres Contours**
- CONTOUR
- Index Contours
  - Supplementary Contour
- Other Features**
- Pipeline
  - Fence
  - Tracks
  - Wetland
  - Lakes and Rivers

**Map 10**

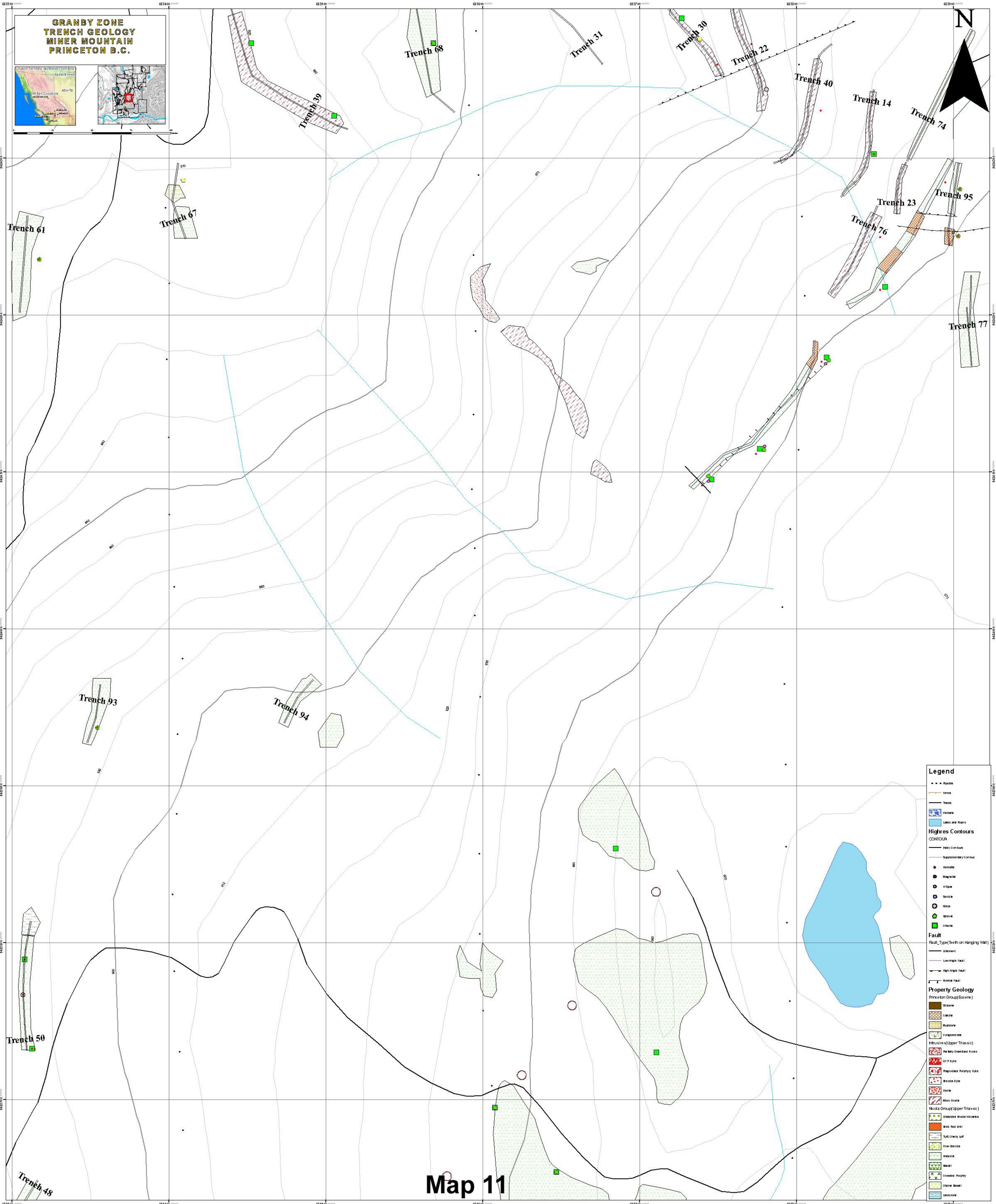
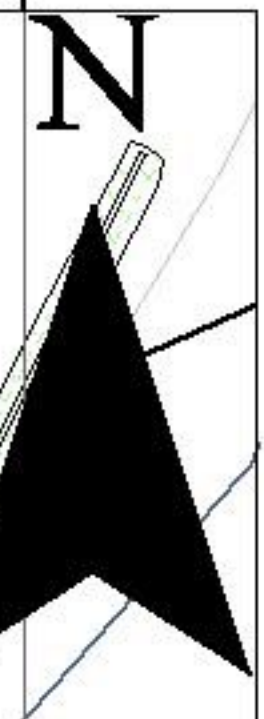
**Map scale 1:750**

Sept 2010

Map Base - TRIM - 1:20000  
UTM Zone 10 - NAD83  
Contours in Metres A.S.L.



**GRANBY ZONE  
TRENCH GEOLOGY  
MINER MOUNTAIN  
PRINCETON B.C.**



**Legend**

- Point
- Line
- Area
- Highes Contours
- CONTOUR
- Contour
- Supplementary Contour
- Point
- Line
- Area
- Fault
- Fault\_Type (Teeth on Hanging Wall)
- Unknown
- Low Angle Fault
- High Angle Fault
- Normal Fault
- Property Geology
- Princeton Group (Boerner)
- Siltstone
- Calcite
- Mudstone
- Compensite
- Triassic (Upper Triassic)
- Pre-Mary-Oakstead Rocks
- G.P. Flysch
- Magdalen Parashale Flysch
- Broada Flysch
- Horle
- Mesa shale
- Mochara Group (Upper Triassic)
- Unconsolidated Mochara volcanics
- Black Red silt
- Tuff, Crystals Luff
- Flow Breccia
- Andesite
- Basalt
- Covered Porphyry
- Quartzite Basalt
- Lava flow

Map 11

Map scale 1:750

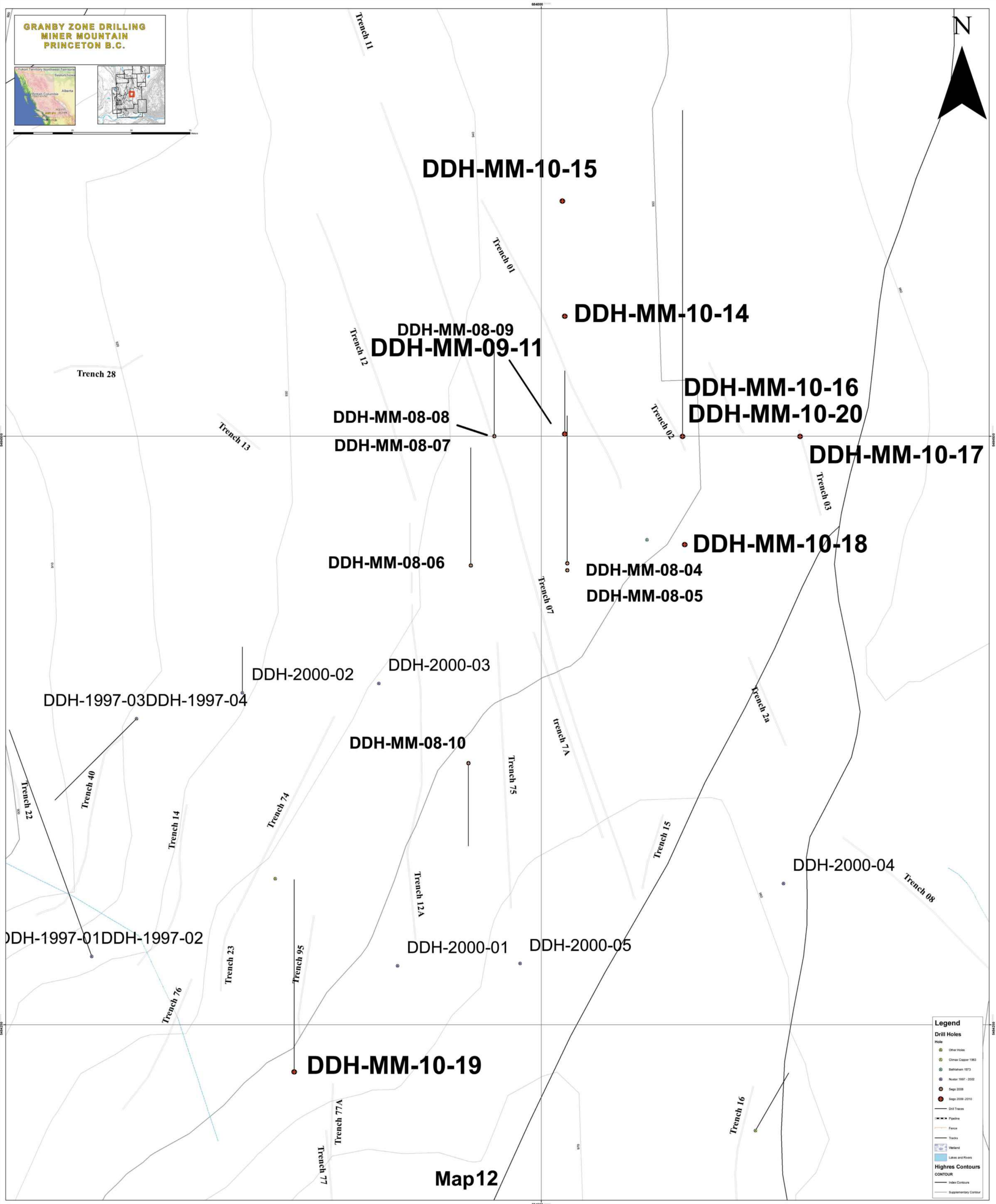
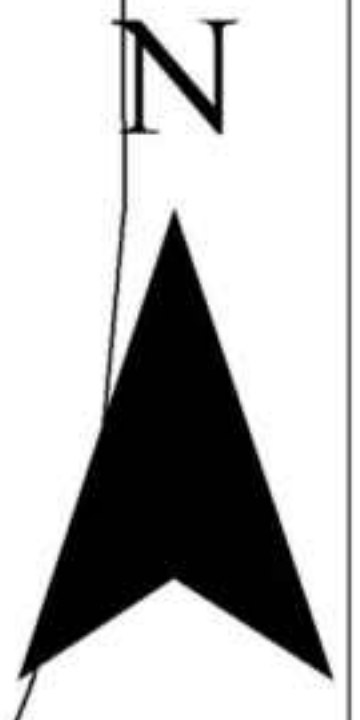
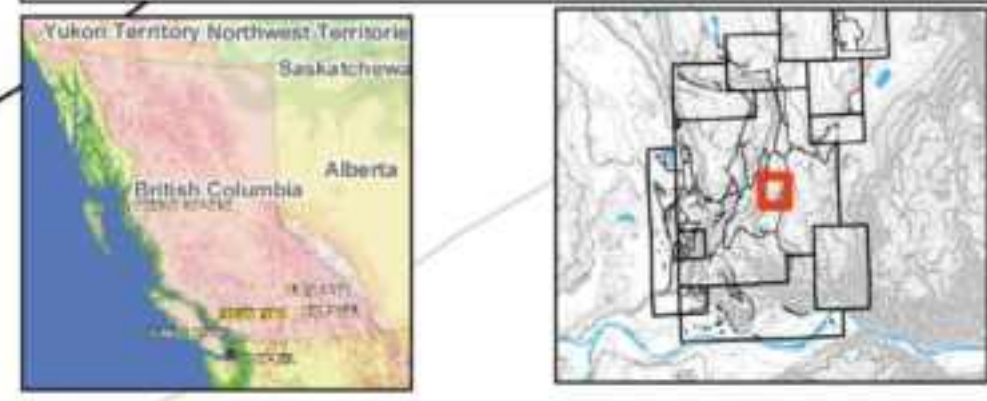
Sept 2010

Map Base - TRIM - 1:20000  
UTM Zone 10 - NAD83  
Contours in Metres A.S.L

TSX-V: SGZ  
**SE GO!**  
RESOURCES INC.  
www.segoresources.com  
604-682-2933 / 1-866-683-2933



**GRANBY ZONE DRILLING  
MINER MOUNTAIN  
PRINCETON B.C.**



**DDH-MM-10-15**

**DDH-MM-10-14**

**DDH-MM-08-09  
DDH-MM-09-11**

**DDH-MM-10-16  
DDH-MM-10-20**

**DDH-MM-08-08  
DDH-MM-08-07**

**DDH-MM-10-17**

**DDH-MM-10-18**

**DDH-MM-08-06**

**DDH-MM-08-04  
DDH-MM-08-05**

**DDH-2000-02 DDH-2000-03**

**DDH-1997-03 DDH-1997-04**

**DDH-MM-08-10**

**DDH-2000-04**

**DDH-1997-01 DDH-1997-02**

**DDH-2000-01 DDH-2000-05**

**DDH-MM-10-19**

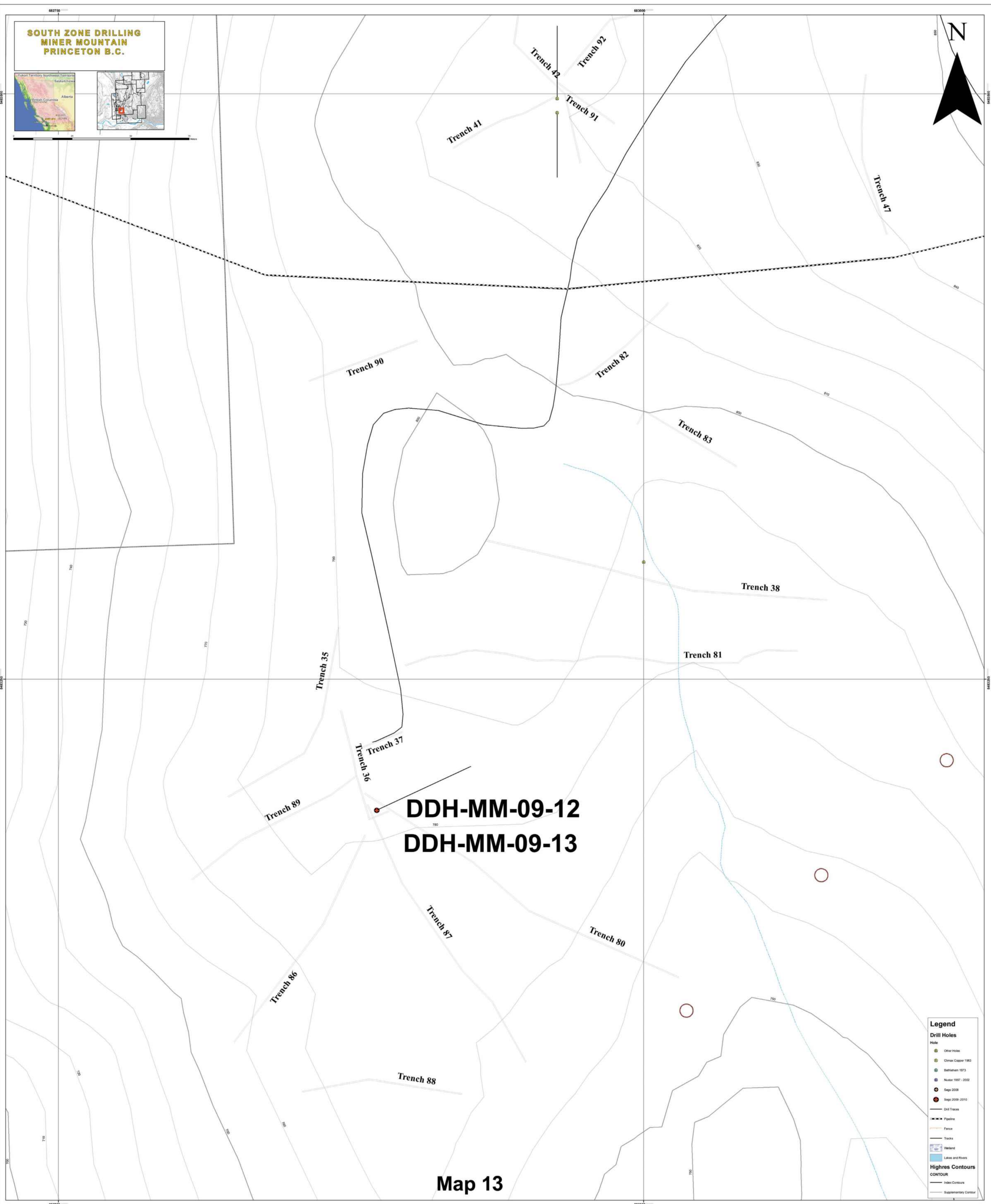
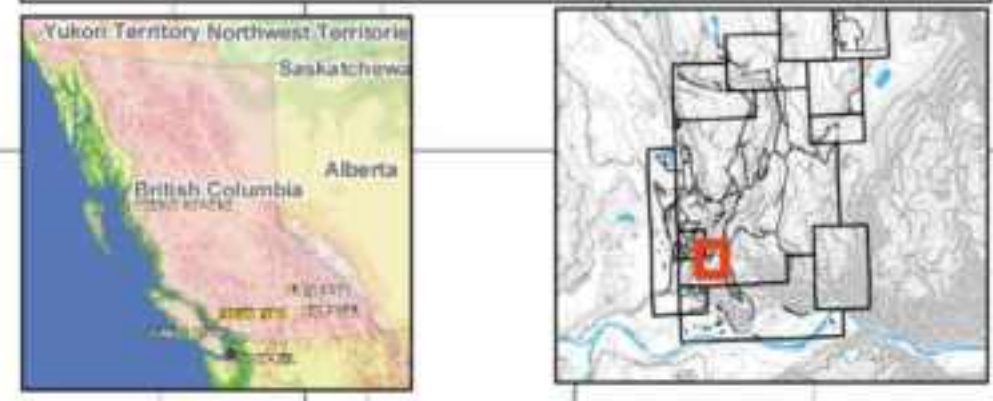
**Map12**

**Legend**

Drill Holes	
	Other Holes
	Ormai Copper 1993
	Bethlehem 1973
	Nasir 1997-2002
	Sego 2008
	Sego 2009-2010
	Drill Traces
	Pipeline
	Fence
	Tracks
	Wetland
	Lakes and Rivers
Highres Contours	
	Index Contours
	Supplementary Contour



**SOUTH ZONE DRILLING  
MINER MOUNTAIN  
PRINCETON B.C.**



**DDH-MM-09-12**  
**DDH-MM-09-13**

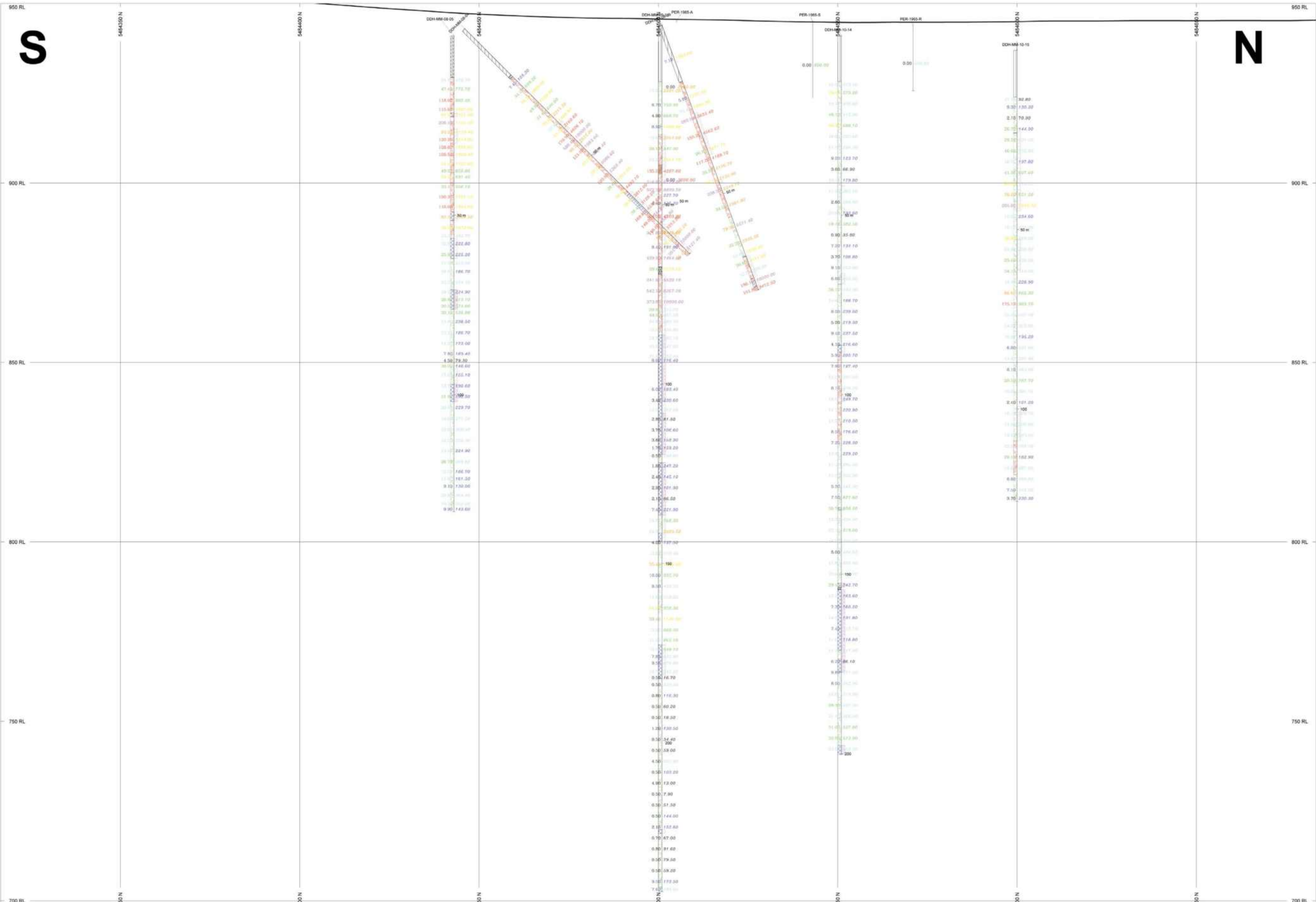
**Map 13**

**Map scale 1:500**

**Legend**

Drill Holes	
●	Other Holes
●	Ormai Copper 1963
●	Bethlehem 1973
●	Nisar 1997-2002
●	Sege 2008
●	Sege 2009-2010
—	Drill Traces
—	Pipeline
—	Fence
—	Tracks
—	Wellhead
—	Lakes and Rivers
Highres Contours	
—	Index Contours
—	Supplementary Contour





**HOLES PLOTTED**  
TOTAL 9  
DDH-MM-08-04 DDH-MM-08-05 DDH-MM-08-09  
DDH-MM-09-11 DDH-MM-10-14 DDH-MM-10-15  
PER-1965-A PER-1965-R PER-1965-S

**ROCK CODES**

Rock_Code	PAT	CODE	DESCRIPTION
Md	[Pattern]	Micro Diorite	Micro Diorite
Ar	[Pattern]	Altered Rock - Rock where the original protolith has been obscured by alteration.	Altered Rock - Rock where the original protolith has been obscured by alteration.
Ad	[Pattern]	Andesite	Andesite
CTu	[Pattern]	Crystal Tuff	Crystal Tuff
Ti	[Pattern]	Till	Till
ND	[Pattern]	Rock Type Not Determined	Rock Type Not Determined
Cas	[Pattern]	Casing Only	Casing Only
Dk	[Pattern]	Dyke	Dyke

**ROCK CODES**

Rock_Code	PAT	LABEL	DESCRIPTION
Tb	[Pattern]	Tectonic Breccia	Tectonic Breccia
Fz	[Pattern]	Fault Zone (Gouge, Breccia, Shatter)	Fault Zone (Gouge, Breccia, Shatter)

**VALUES**

VALUES	L/R	COL	RANGE
Au_PPB	L	[Color]	200
Au_PPB	L	[Color]	100
Au_PPB	L	[Color]	75
Au_PPB	L	[Color]	50
Au_PPB	L	[Color]	25
Au_PPB	L	[Color]	10
Au_PPB	L	[Color]	5

**VALUES**

VALUES	L/R	COL	RANGE
Cu_ppm	R	[Color]	5000
Cu_ppm	R	[Color]	3000
Cu_ppm	R	[Color]	2000
Cu_ppm	R	[Color]	1000
Cu_ppm	R	[Color]	500
Cu_ppm	R	[Color]	250
Cu_ppm	R	[Color]	100

**SECTION SPECS:**  
REF. PT. E, N 684011 m 5484500 m  
EXTENTS 366.7 m 256.9 m  
SECTION TOP, BOT 950 m 683.1 m  
TOLERANCE +/- 6.005 m

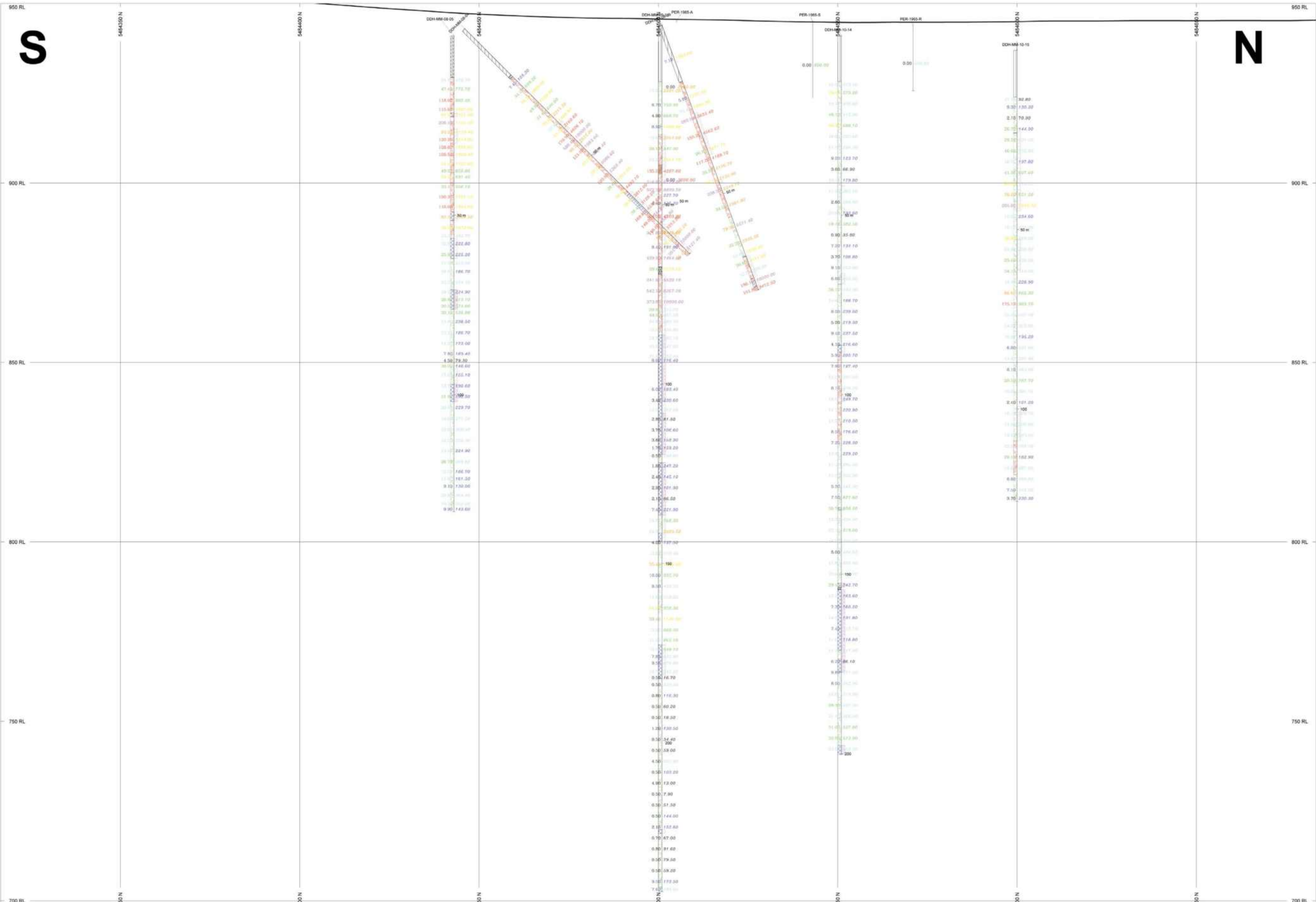
**SCALE**  
(m)  
-5 0 5 10 15 20  
\*unknown

**AZIMUTH = 0°**  
N  
V E

**Sego Resources  
Miner Mountain  
2010 Drilling  
Granby Zone**

**DDH Section 1 – Granby Zone DDH 11,14 and 15 with DDH 5,4,9 Sego 2008**





### HOLES PLOTTED

TOTAL 9  
 DDH-MM-08-04 DDH-MM-08-05 DDH-MM-08-09  
 DDH-MM-09-11 DDH-MM-10-14 DDH-MM-10-15  
 PER-1965-A PER-1965-R PER-1965-S

ROCK CODES	PAT	CODE	DESCRIPTION
Rock_Code		Md	Micro Diorite
		Ar	Altered Rock - Rock where the original protolith has been obscured by alteration
		Ad	Andesite
		CTu	Crystal Tuff
		Ti	Till
		ND	Rock Type Not Determined
		Cas	Casing Only
		Dk	Dyke

ROCK CODES	PAT	LABEL	DESCRIPTION
Rock_Code		Tb	Tectonic Breccia
		Fz	Fault Zone (Gouge, Breccia, Shatter)

VALUES	L/R	COL	RANGE
Au_PPB	L		200 100 75 50 25 10 5

VALUES	L/R	COL	RANGE
Cu_ppm	R		5000 3000 2000 1000 500 250 100

**SECTION SPECS:**  
 REF. PT. E, N 684011 m 5484500 m  
 EXTENTS 366.7 m 256.9 m  
 SECTION TOP, BOT 950 m 683.1 m  
 TOLERANCE +/- 6.005 m

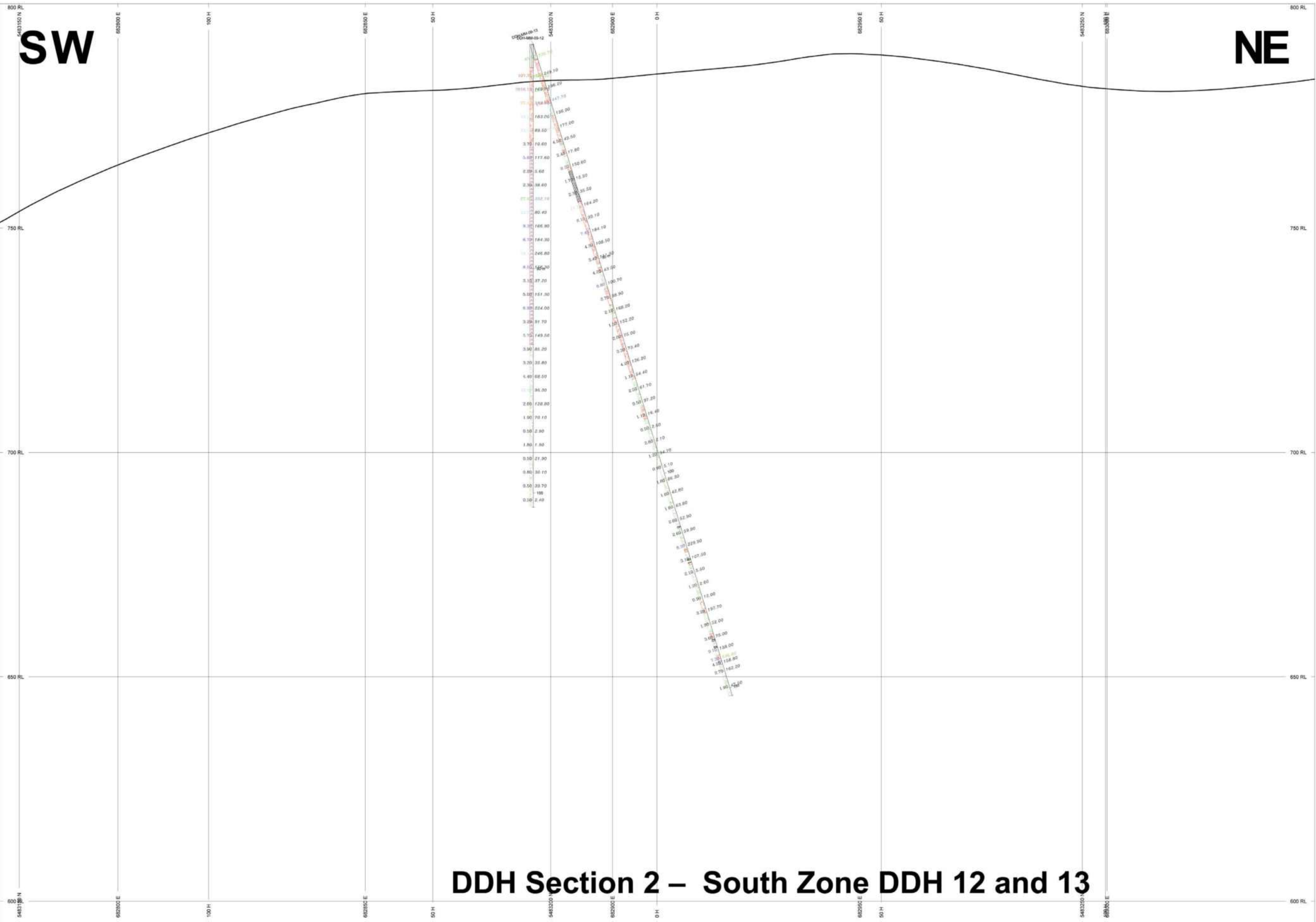
**SCALE**  
 (m)  
 -5 0 5 10 15 20  
 \*unknown

**AZIMUTH = 0°**  
 N  
 V E

**Sego Resources  
 Miner Mountain  
 2010 Drilling  
 Granby Zone**

**DDH Section 1 – Granby Zone DDH 11,14 and 15 with DDH 5,4,9 Sego 2008**





# DDH Section 2 – South Zone DDH 12 and 13

**HOLES PLOTTED**  
TOTAL 2  
DDH-MM-09-12 DDH-MM-09-13

**ROCK CODES**

Rock_Code	PAT	CODE	DESCRIPTION
Md	[Pattern]	Md	Micro Diorite
Ar	[Pattern]	Ar	Altered Rock - Rock where the original protolith has been obscured by alteration.
Ad	[Pattern]	Ad	Andesite
Cas	[Pattern]	Cas	Casing Only
Dk	[Pattern]	Dk	Dyke
Fz	[Pattern]	Fz	Fault Zone (Gouge, Breccia, Shatter)
Md&Ar	[Pattern]	Md&Ar	Microdiorite & Andesite that are so closely intertonguing as to be impossible to separate

**VALUES**

**Cu\_ppm**

LIR	COL	RANGE
0	Red	3000
1	Orange	2000
2	Yellow	1000
3	Green	500
4	Blue	250

**Au\_PPB**

LIR	COL	RANGE
0	Red	250
1	Orange	100
2	Yellow	75
3	Green	50
4	Blue	25
5	Black	10
6	Black	5

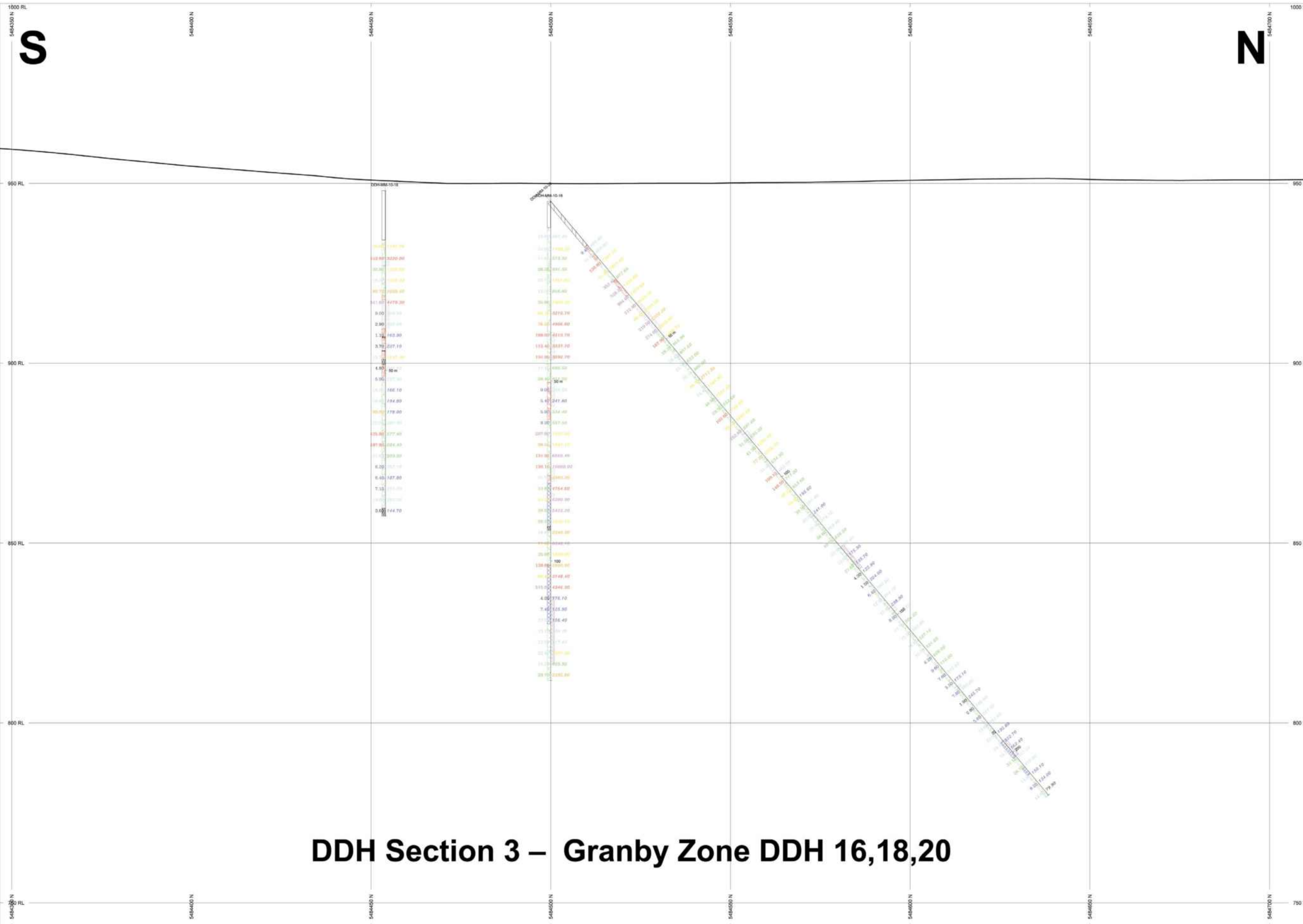
**SECTION SPECS:**  
REF. PT. E, N 682909 m 5483210 m  
EXTENTS 293.4 m 205.5 m  
SECTION TOP, BOT 800 m 594.5 m  
TOLERANCE +/- 8.56 m

**SCALE**  
(m)  
-4 0 4 8 12 16  
\*unknown

**AZIMUTH = 65.05°**  
N  
W E

Sego Resources  
Miner Mountain Project  
South Zone Section





# DDH Section 3 – Granby Zone DDH 16,18,20

**HOLES PLOTTED**  
TOTAL 3  
DDH-MM-10-16 DDH-MM-10-18 DDH-MM-10-20

ROCK CODES	PAT	CODE	DESCRIPTION
Rock_Code	Md	Md	Micro Diorite
	Ar	Ar	altered Rock - Rock where the original protolith has been obscured by alteration.
	Ad	Ad	Andeste
	Cas	Cas	Casing Only
	Dk	Dk	Dyke
	Fz	Fz	Fault Zone (Gouge, Breccia, Shatter)

ROCK CODES	PAT	LABEL	DESCRIPTION
Rock_Code	Tb	Tb	Tectonic Breccia
	Fz	Fz	Fault Zone (Gouge, Breccia, Shatter)

VALUES	L/R	COL	RANGE
Au_PPB	L	Color scale	200, 100, 75, 50, 25, 10, 5
Cu_ppm	R	Color scale	5000, 3000, 2000, 1000, 500, 250, 100

**SECTION SPECS:**  
 REF. PT. E, N 684061 m 5484530 m  
 EXTENTS 366.7 m 256.9 m  
 SECTION TOP, BOT 1000 m 743.1 m  
 TOLERANCE +/- 4.689 m

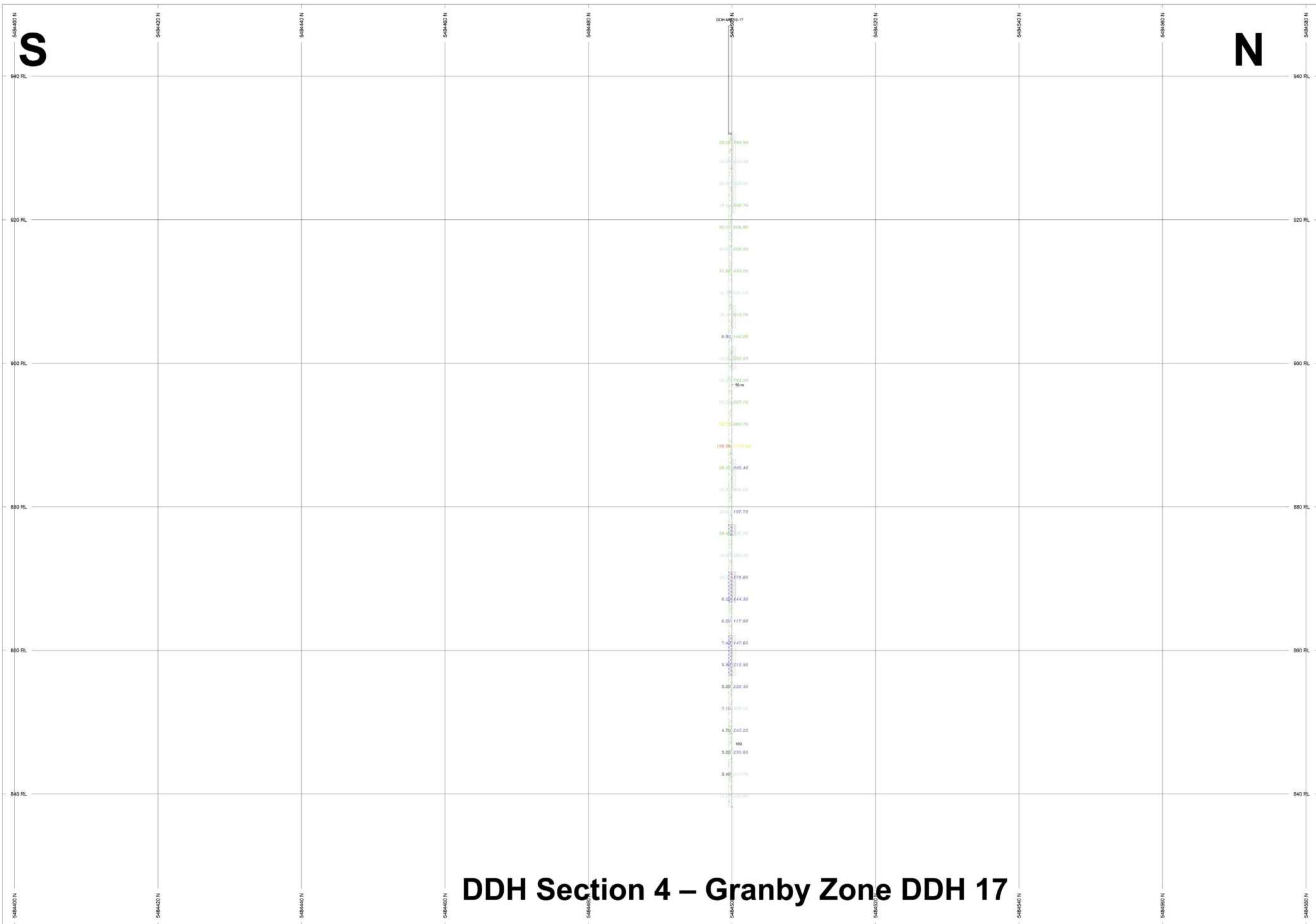
**SCALE**  
(m)

\*unknown

**AZIMUTH = 0°**

Sego Resources  
 Miner Mountain  
 2010 Drilling  
 Granby Zone





# DDH Section 4 – Granby Zone DDH 17

**HOLES PLOTTED**  
TOTAL 1  
DDH-MM-10-17

ROCK CODES	PAT	CODE	DESCRIPTION
Rock_Code		Ar	Altered Rock - Rock where the original protolith has been obscured by alteration
		Ad	Andesite
		Ti	Till
		Cas	Casing Only

ROCK CODES	PAT	LABEL	DESCRIPTION
Rock_Code		Tectonic Breccia	Tectonic Breccia
		Fz	Fault Zone (Gouge, Breccia, Shatter)

VALUES	L/R	COL	RANGE
Au_PPB	L		200 100 75 50 25 10 5

VALUES	L/R	COL	RANGE
Cu_ppm	R		5000 3000 2000 1000 500 250 100

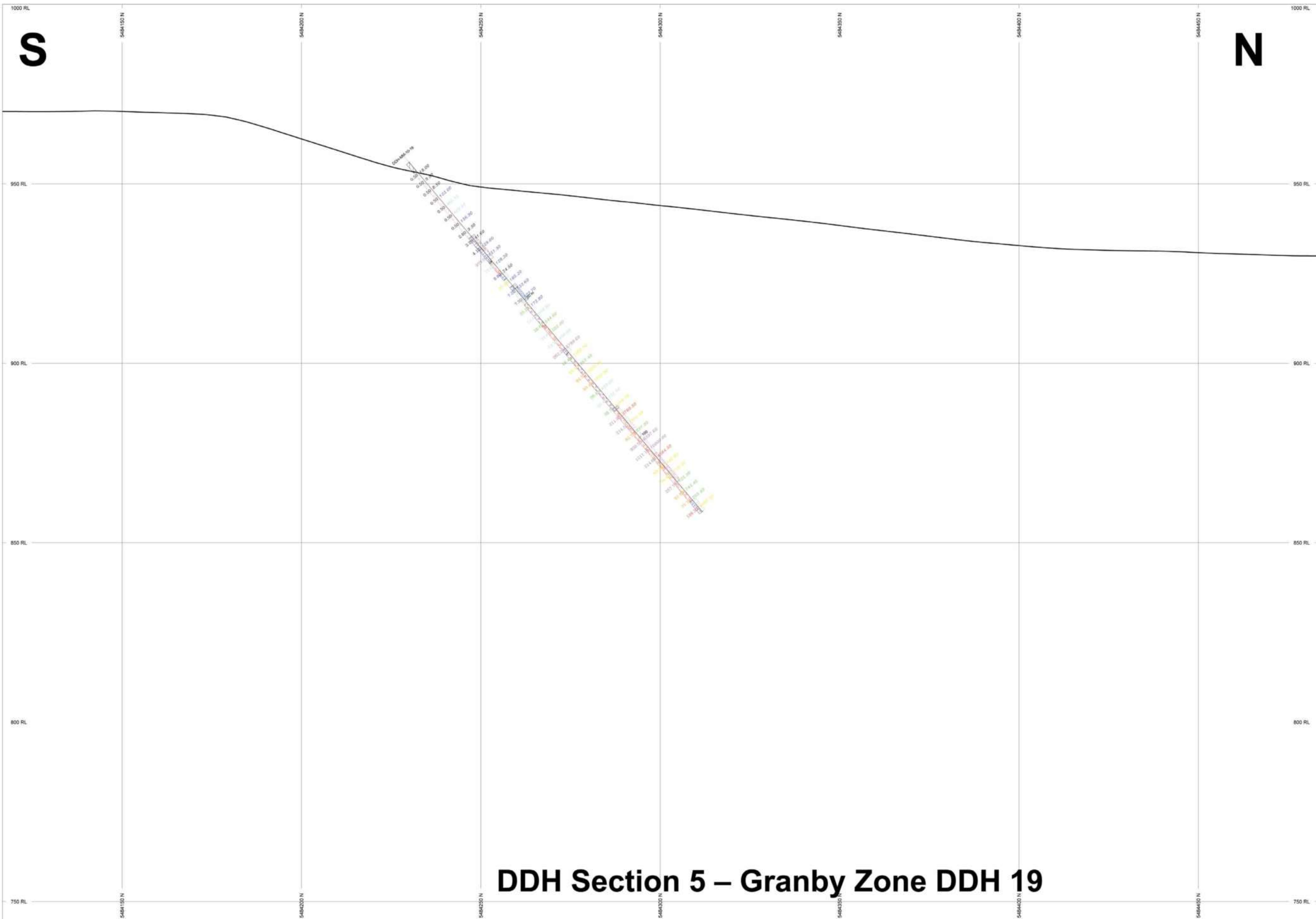
**SECTION SPECS:**  
REF. PT. E, N 684108 m 5484490 m  
EXTENTS 183.4 m 128.4 m  
SECTION TOP, BOT 950 m 821.6 m  
TOLERANCE +/- 5.655 m

**SCALE**  
(m)  
-2 0 2 4 6 8 10 12  
\*unknown

**AZIMUTH = 0°**  
N  
E  
V

Sego Resources  
Miner Mountain  
2010 Drilling  
Granby Zone





# DDH Section 5 – Granby Zone DDH 19

**HOLES PLOTTED**  
TOTAL 1  
DDH-MM-10-19

ROCK CODES	PAT	CODE	DESCRIPTION
Rock_Code		Md	Micro Diorite
		Ar	Altered Rock - Rock where the original protolith has been obscured by alteration.
		Ad	Andesite
		Brb	Brick Red Basalt
		ChTu	Cherty Tuft - Fine grained, chonocodally fracturing volcanic Casing Only
		Cas	Casing Only
		Dk	Dyke
		MdAd	Microdiorite & Andesite that are so closely interfingering as to be impossible to separate

ROCK CODES	PAT	LABEL	DESCRIPTION
Rock_Code		Tb	Tectonic Breccia
		Fz	Fault Zone (Gouge, Breccia, Shatter)
		Br	Breccia
		Sz	Zone of Ductile Deformation

VALUES	L/R	COL	RANGE
Au_PPB	L		200 100 75 50 25 10 5

VALUES	L/R	COL	RANGE
Cu_ppm	R		5000 3000 2000 1000 500 250 100

**SECTION SPECS:**  
REF. PT. E, N 683894 m 5484300 m  
EXTENTS 366.7 m 256.9 m  
SECTION TOP, BOT 1000 m 743.1 m  
TOLERANCE +/- 6.005 m

**SCALE**  
(m)  
-5 0 5 10 15 20  
\*unknown

**AZIMUTH = 0°**  
N  
V  
E

Sego Resources  
Miner Mountain  
2010 Drilling  
Granby Zone