

Ministry of Energy & Mines  
 Energy & Minerals Division  
 Geological Survey Branch

**ASSESSMENT REPORT  
 TITLE PAGE AND SUMMARY**

TITLE OF REPORT [type of survey(s)] <u>ROCK GEOCHEMISTRY</u>	TOTAL COST <u>8082.<sup>00</sup></u>
---	---

AUTHOR(S) CRAIG KENNEDY SIGNATURE(S) Craig Kennedy

NOTICE OF WORK PERMIT NUMBER(S)/DATE(S) N/A YEAR OF WORK 2010

STATEMENT OF WORK - CASH PAYMENT EVENT NUMBER(S)/DATE(S) 4811451 June 16 2010 - July 21 2010

PROPERTY NAME BIRD

CLAIM NAME(S) (on which work was done) BIRD 1 (672663) BIRD 2 (672663) BIRD 3 (751282)

COMMODITIES SOUGHT Gold / COPPER

MINERAL INVENTORY MINFILE NUMBER(S), IF KNOWN N/A

MINING DIVISION OMENICA NTS (TRIM) 093F065

LATITUDE — ° — ' — " LONGITUDE — ° — ' — " (at centre of work)

OWNER(S) UTM COORDINATES 5943560N - 360000E

1) FRED CRITCHLOW 2) \_\_\_\_\_

MAILING ADDRESS  
Box 517  
KASLO B.C. V0G-1M0

OPERATOR(S) [who paid for the work]  
 1) KOOTENAY GOLD INC. 2) \_\_\_\_\_

MAILING ADDRESS  
SUITE 960-1055 W. HASTINGS ST.  
VANCOUVER B.C. V6E-2E9

PROPERTY GEOLOGY KEYWORDS (lithology, age, stratigraphy, structure, alteration, mineralization, size and attitude):  
Andesitic to basalt volcanics of unknown age cut by younger diorite - gabbro dikes. Property dissected by a wide zone of carbonate alteration, brecciation pyrite, hematite, chalcopyrite mineralization associated with "K" spar, epidote and chlorite.

REFERENCES TO PREVIOUS ASSESSMENT WORK AND ASSESSMENT REPORT NUMBERS N/A

TYPE OF WORK IN THIS REPORT	EXTENT OF WORK (IN METRIC UNITS)	ON WHICH CLAIMS	PROJECT COSTS APPORTIONED (incl. support)
<b>GEOLOGICAL (scale, area)</b>			
Ground, mapping _____			
Photo interpretation _____			
<b>GEOPHYSICAL (line-kilometres)</b>			
Ground			
Magnetic _____			
Electromagnetic _____			
Induced Polarization _____			
Radiometric _____			
Seismic _____			
Other _____			
Airborne _____			
<b>GEOCHEMICAL</b>			
(number of samples analysed for ...)			
Soil _____			
Silt _____			
Rock _____	52 Samples	BIRD 1, 2, 3 claims	8082. <sup>00</sup>
Other _____			
<b>DRILLING</b>			
(total metres; number of holes, size)			
Core _____			
Non-core _____			
<b>RELATED TECHNICAL</b>			
Sampling/assaying _____			
Petrographic _____			
Mineralographic _____			
Metallurgic _____			
<b>PROSPECTING (scale, area)</b> _____			
<b>PREPARATORY/PHYSICAL</b>			
Line/grid (kilometres) _____			
Topographic/Photogrammetric (scale, area) _____			
Legal surveys (scale, area) _____			
Road, local access (kilometres)/trail _____			
Trench (metres) _____			
Underground dev. (metres) _____			
Other _____			
TOTAL COST			8082. <sup>00</sup>

ASSESSMENT REPORT  
On  
Rock Geochemistry Program

**Bird Property**

Omineca Mining Division

Trim 93F.065

UTM Coordinates 5943500N – 360000E

BC Geological Survey  
Assessment Report  
32069

OWNER

Fred H Critchlow  
Box 517  
Kaslo, BC V0G 1M0

OPERATOR

Kootenay Gold Inc  
Suite 920 - 1055 W. Hastings St.  
Vancouver, BC V6E 2E9

REPORT BY

Craig Kennedy  
2290 Dewolfe Ave  
Kimberley, BC V1A 1P5

February 2011

## TABLE OF CONTENTS

	Page
1.00 INTRODUCTION	
1.10 Location and Access	3
1.20 Property	3
1.30 History of Previous Work	3
1.40 Summary	3
2.00 ROCK GEOCHEM PROGRAM	7
3.00 CONCLUSION	7
4.00 STATEMENT OF EXPENDITURES	8
5.00 AUTHOR'S QUALIFICATIONS	9

### List of Illustrations

Figure 1. Regional Property Location Map	5
Figure 2. Claim Location Map	6
Figure 3-9 Rock Sample Maps	13
Appendix 1. Rock Sample Descriptions	10
Appendix 2. Acme Rock Geochem Analyses	20

# BIRD PROPERTY

## ROCK GEOCHEMISTRY REPORT

Craig Kennedy

February 2011

---

### 1.00 INTRODUCTION

#### 1.10 Location and Access

The Property is located in the Omineca Mining Division of central BC, NTS 093.F065. Very good access is provided by the Holy Cross logging road, Marilla logging road and secondary haul roads on the property.

#### 1.20 Property

The Bird Property is covered by tenures 672663, 672683 and 751282. It is owned by Fred H. Critchlow of Kaslo BC.

#### 1.30 History of Previous Exploration

The Bird Property area has been held by exploration companies and individuals through the past 30 years.

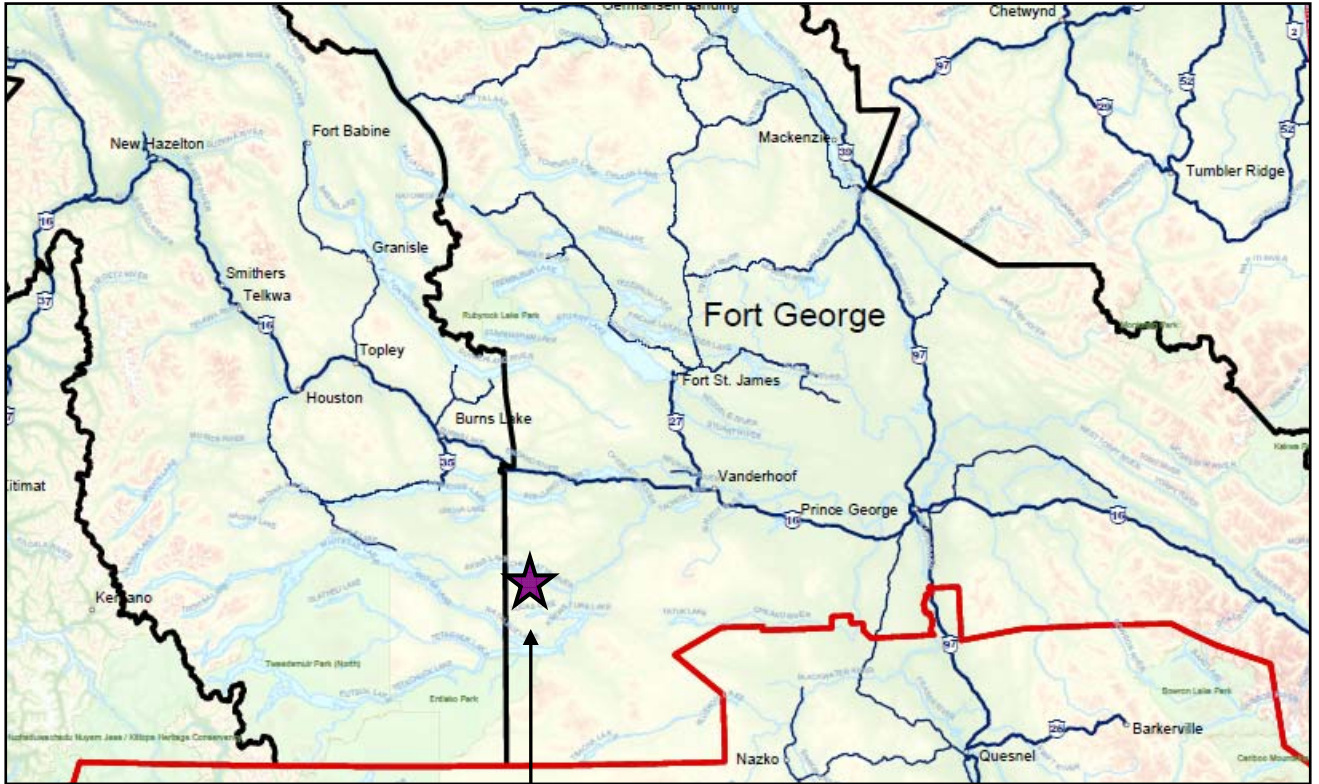
#### 1.40 Summary

The Bird Property is one of a number of properties hosted by the postulated Nechako Arch. Kootenay Gold Inc. Entered into a grubstake agreement with prospector Fred Critchlow to evaluate, then elect on those properties fitting Kootenay Gold's exploration criteria. The Nechako Arch is an exploration concept contained within a north-eastern running structural zone, which since Eocene time has been defined by strongly developed geomorphology. This geomorphology is delineated by stream and lake patterns. The general area hosts geology predominantly consisting of Jurassic through to tertiary volcanic and intrusive rocks. The metal mine which keys the area is the impressive Endako Molybdenum porphyry deposit, approximately 40 kilometres to the north west of the property. As with most of the Nechako plateau bedrock occurrence is sparse but where available provides opportunity to view prominent structure controls and alteration styles. Jurassic

and cretaceous intrusive rocks and Eocene volcanic rocks are the most common in Kootenay Gold's area of interest. These rocks are exposed as structural islands where northeast structure is cut by north-western structural systems.

It is speculated that the Endako deposit is a sub-hot-spring system, which has been exposed by structural uplift and erosion. A key exploration clue is the Endako mine area is host to many age and phase type intrusive, a piston geological environment. The above feature is common in Kootenay Gold's area of interest and may in fact be diagnostic of the Nechako arch. Structural blocks with hetro-genius intrusive exposures maybe exposed too or below porphyry levels opening opportunity for shear zone and, or stockwork gold systems. Structural blocks with volcanic cover and hot spring alteration can be considered potential porphyry targets. These opportunities within this type of structural zone (Nechako Arch) provide encouragement for discovery of a large bulk mineable gold deposit. This target type is Kootenay Gold's favoured focus.

Figure 1: Regional Location Map

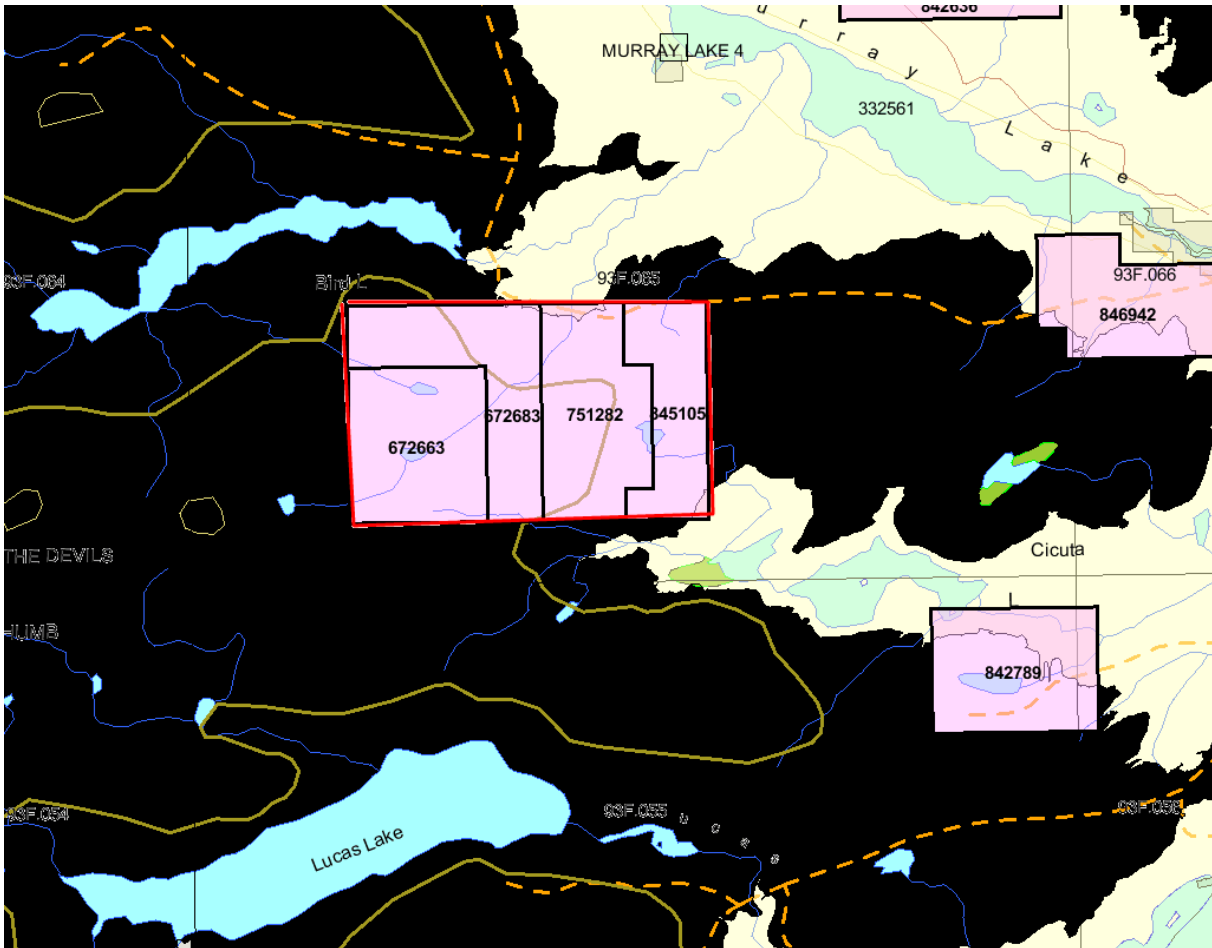


Bird Property Location

Figure 2: Claim Location Map

Map # 093F.065

Scale 1:100,000





## **2.00 ROCK GEOCHEMISTRY**

The present area of interest is a structural zone which strikes NNW through the middle of the Bird Property. Bedrock exposures are sparse but where observed show signs of alteration diagnostic of structure. Exposures within the structural zone are andesites and/or basalts which are cut by narrow diorite to gabbro dikes.

Dikes in most cases are more resistant than the bedrock they cut and are recognized by their elevated character. Some dikes are also porphyritic with colors ranging bluish green to green. The blue-green color may in fact be an alteration?? Outcrop alteration noted is bleaching and a pink to orange pink coloration. ("K" spar?) Epidote, albite and chlorite are the most extensive alteration, the strongest alteration occurs as linear zones or vein like panels. This type of epidote, albite and chlorite can be traced in outcrop in excess of 2.5 km. Outcrops closer to the structure show a carbonate flooding and crackle breccia texture. Disseminated pyrite with rare chalcopyrite can be seen associated with the crackle breccia zones. The best copper mineralization observed exists as blebs with calcite and quartz veining and in disseminations with rusty albite-epidote-chlorite panels. Hematite was noted in some areas and occurs mostly associated with epidote-chlorite alterations. Other alteration noted was actinolite-tremolite, manganese and garnet. One extensive area of serpentinite with weak copper mineralization was noted in the valley bottom along the projection of the structure.

## **3.00 CONCLUSION**

A structural zone hosting different styles of alteration along with pyrite, hematite and copper minerals exists on the Bird Property. The NNW striking structure dissects the center of the property. Copper mineralization associated with diking and carbonate flooding provides incentive for more exploration within the area. Most of the epithermal hot spring systems within the area are associated with northwest-northeast structural intersections. Mineralization within these systems seems to zone from molybdenum in the core to copper on the edges. Gold in the Nechako is found in core zones and along the structural edges of the hot spring systems.

#### 4.00 STATEMENT OF EXPENDITURES

Prospecting & Rock Geochemistry  
Swanson Property

Work performed: Summer 2010

Prospecting Contractors:

Fred Critchlow - 5 days @ 500/day (Includes 4x4 vehicle)	\$2500.00
Craig Kennedy - 5 days @ 350/day	1750.00
ATV Rental	375.00
Acme Labs – 52 rock samples (incl. freight)	1457.00
Accommodations & Food	1100.00
Craig Kennedy - report preparation and writing	700.00
Misc supplies & maps, drafting, etc.	<u>200.00</u>
Total:	<b><u>\$8082.00</u></b>

## 5.00 AUTHOR'S QUALIFICATIONS

As the author of this report I, Craig Kennedy, certify that:

1. I am an independent prospector residing at 2290 Dewolfe Avenue, Kimberley, BC.
2. I have been actively prospecting in the East and West Kootenays district of BC for the past 32 years and have made my living prospecting for the past 23 years.
3. I have been employed as a professional prospector by major and junior mineral exploration companies.
4. I own and maintain mineral claims in BC and have optioned numerous claims to various exploration companies.



Craig Kennedy  
Prospector

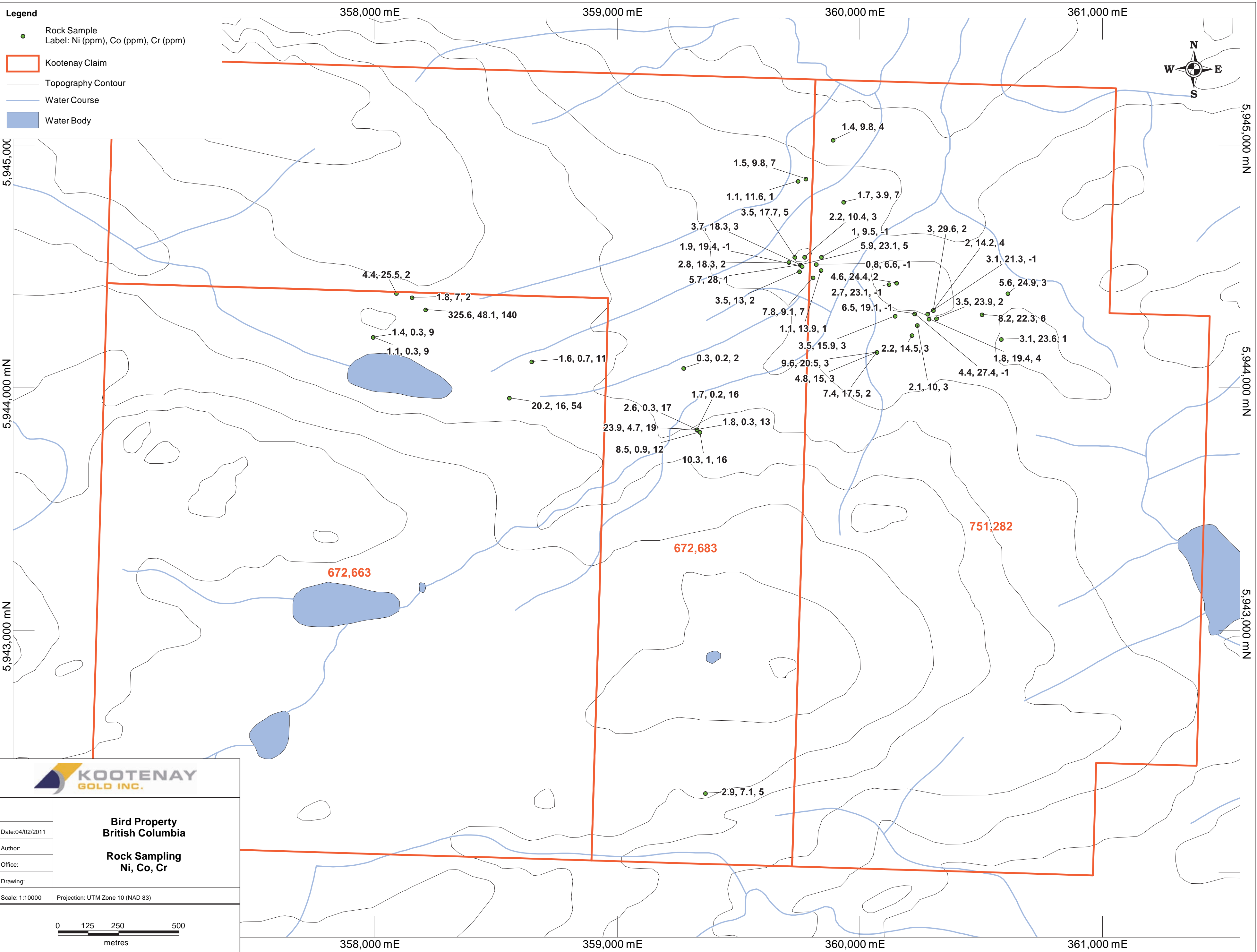
## Appendix #1 - Rock Sample Descriptions

Sample No.	UTM E	UTM N	Property	Description
FC10-136	357993	5944209	Bird Lake	Rhyolite-yellow and red stained-hot spring
FC10-137	357993	5944209	Bird Lake	Same as above-very large angular float
FC10-138	358002	4944219	Bird Lake	Same as above
FC10-158	359707	5944518	Bird Lake	Rusty fractured andesite with epi veinlets
FC10-159	359731	5944539	Bird Lake	More silica flooding with veinlets
FC10-160	359751	5944480	Bird Lake	Same as above
FC10-161	359807	5944454	Bird Lake	Hornfel breccia
FC10-162	360070	5944147	Bird Lake	Breccia with copper staining
FC10-163	360070	5944147	Bird Lake	Same as above
FC10-164	360070	5944147	Bird Lake	Same as above except minor quartz veining
FC10-165	360145	5944296	Bird Lake	Quartz vein in serpentized breccia
CK10 - 1066	358089	5944390	Bird	Agglo or diatreme? goethite some lim color "F" or "Ba"?
CK10 - 1067	358153	5944372	Bird	Same as above with Mn and jar and hem color
CK10 - 1068	358209	5944322	Bird	Diorite with "F"? Garnet?
CK10 - 1069	338110	5944354	Bird	Same as 1067
CK10 - 1070	338110	5944354	Bird	Same as above - little more alt
CK10 - 1071	358647	5944108	Bird	Boulder silicified breccia float micro veined diss py
CK10 - 1174	360120	5944426	Bird	Skarn andesite volcanics - epi, py, rare cupy, calcite, and garnet
CK10 - 1175	360151	5944432	Bird	Same as above but some epi veins
CK10 - 1176	359890	5945021	Bird	Float epi - coming from andesite - py and qrtz vugs with minor cupy
CK10 - 1177	359777	5944861	Bird	Crackle breccia - py micro veins epi - calcite rare cupy solidifying
CK10 - 1178	359745	5944852	Bird	Same as above

Sample No.	UTM E	UTM N	Property	Description
CK10 - 1179	359755	5944507	Bird	Andesite is breccia and has calcite and qrtz veins, py and cupy. Lots of fr, py, Mn, chlorite. Lots of dykes - diorite
CK10 - 1180	359755	5944507	Bird	Same as above
CK10 - 1181	359755	5944507	Bird	Same as above
CK10 - 1182	359762	5944501	Bird	Micro - macro epi veins py in coarser material diorite? Mn and lim stain
CK10 - 1183	359820	5944509	Bird	Narrow lim rich breccia
CK10 - 1184	359840	5944485	Bird	Dolomite and silica flooded - diss py. Same as above
CK10 - 1185	359841	5944539	Bird	Same as above
CK10 - 1186	359772	5944539	Bird	Pick up red chips
CK10 - 1187	359363	5942329	Bird	Basalt celadonite lim vugs in alt volcanic
CK10 - 1188	359273	5944081	Bird	Bleached rhyolite subcrop - jerosite and lim color
CK10 - 1189	359328	5943828	Bird	Silicified cong micro grey veins Fe hem stain
CK10 - 1190	359328	5943828	Bird	Same as above
CK10 - 1191	359328	5943828	Bird	Same as above
CK10 - 1192	359328	5943828	Bird	Breccia in amongst cong - black grey some hem lim stain
CK10 - 1193	359340	5943818	Bird	Composite of silicified cong "scabs" - Fe and hem color
CK10 - 1194	359340	5943818	Bird	Same as above
CK10 - 1195	358555	5943958	Bird	Breccia fr lim rich flow banded rhyolite
CK10 - 1196	359933	5944766	Bird	Silicified andesite py and fe
CK10 - 1197	360215	5944216	Bird	Silicified blue green andesite micro chl veins py and epi
CK10 - 1198	360237	5944258	Bird	Same type of porph more epi - some qrtz veins - rare cupy and py
CK10 - 1199	360279	5944304	Bird	Epidote alt andesite some fresh cupy
CK10 - 1200	360285	5944284	Bird	Epidote alt andesite porph blebs of weathered cupy
CK10 - 1201	360303	5944320	Bird	Quartz-calcite veins within epidote veining- minor Cu.

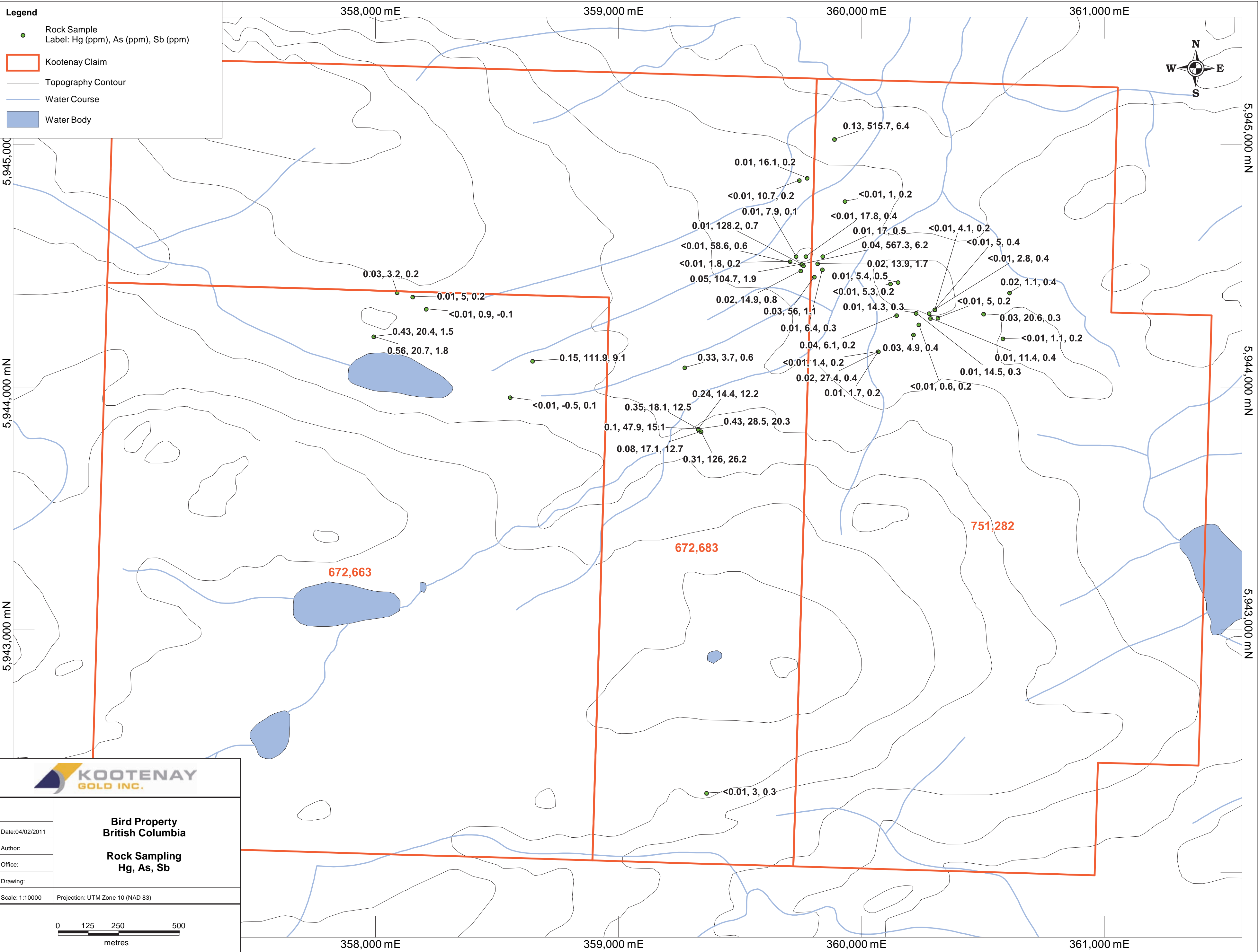












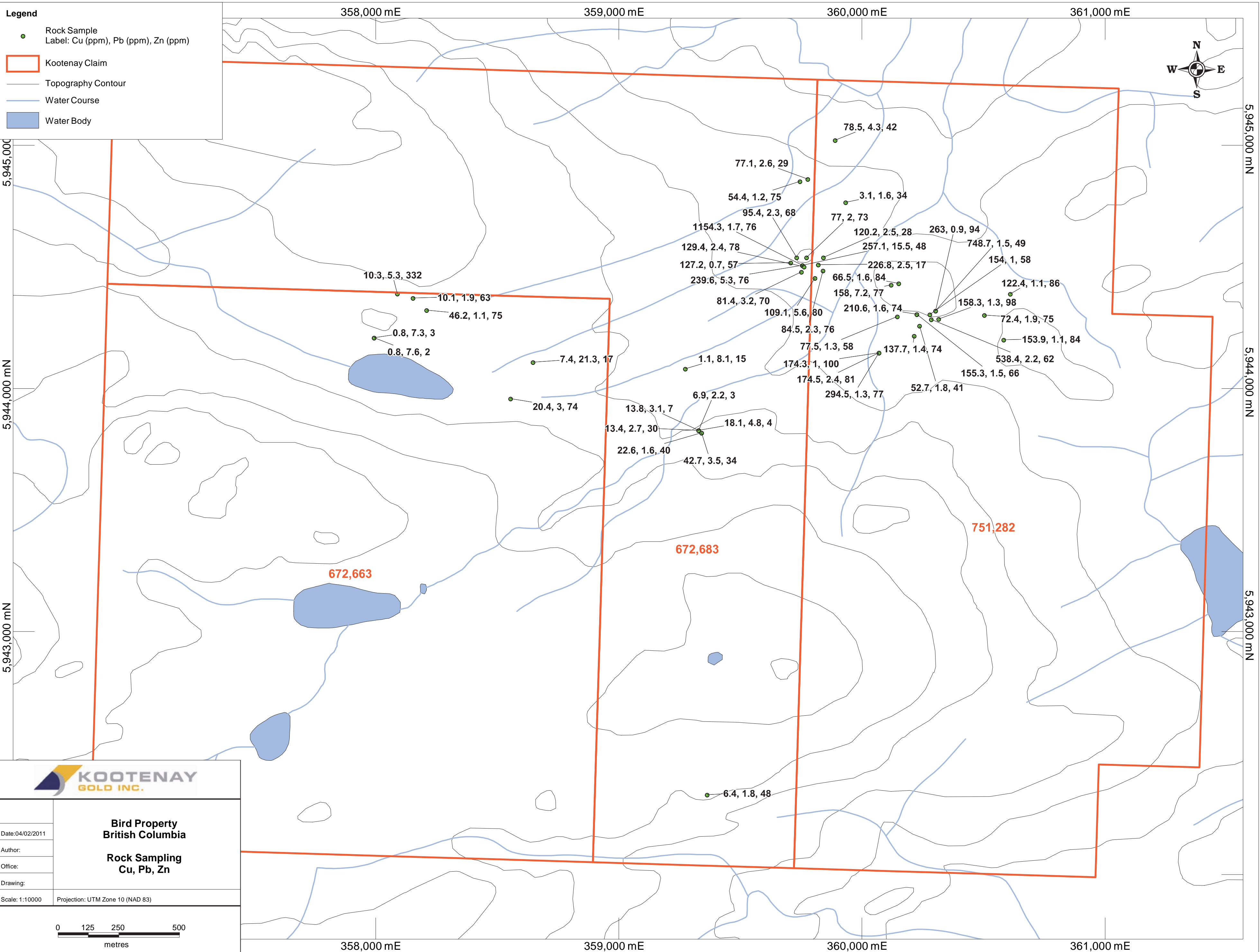
**KOOTENAY GOLD INC.**

**Bird Property  
British Columbia**

**Rock Sampling  
Hg, As, Sb**

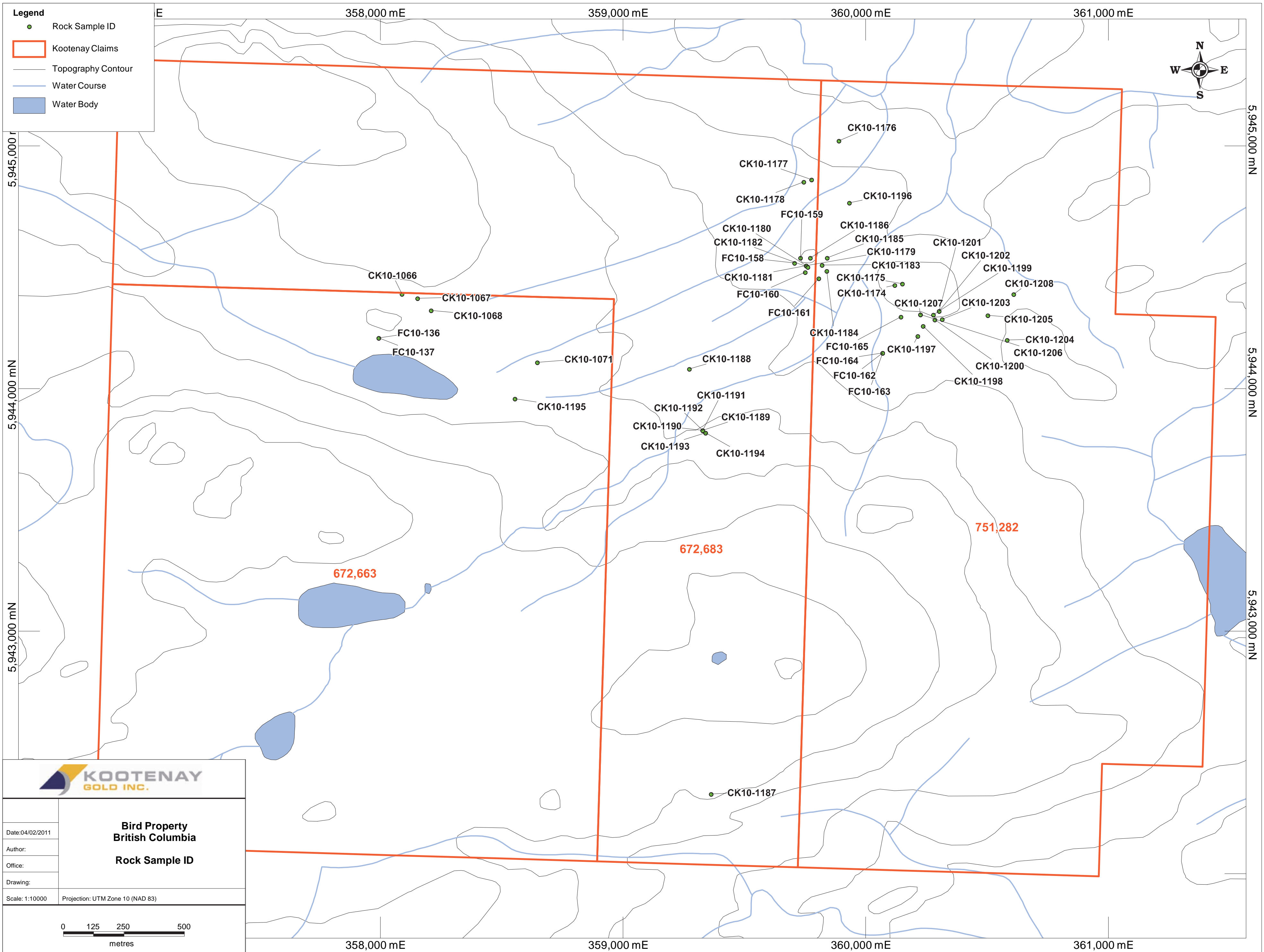
Date: 04/02/2011  
 Author:  
 Office:  
 Drawing:  
 Scale: 1:10000 Projection: UTM Zone 10 (NAD 83)

0 125 250 500 metres



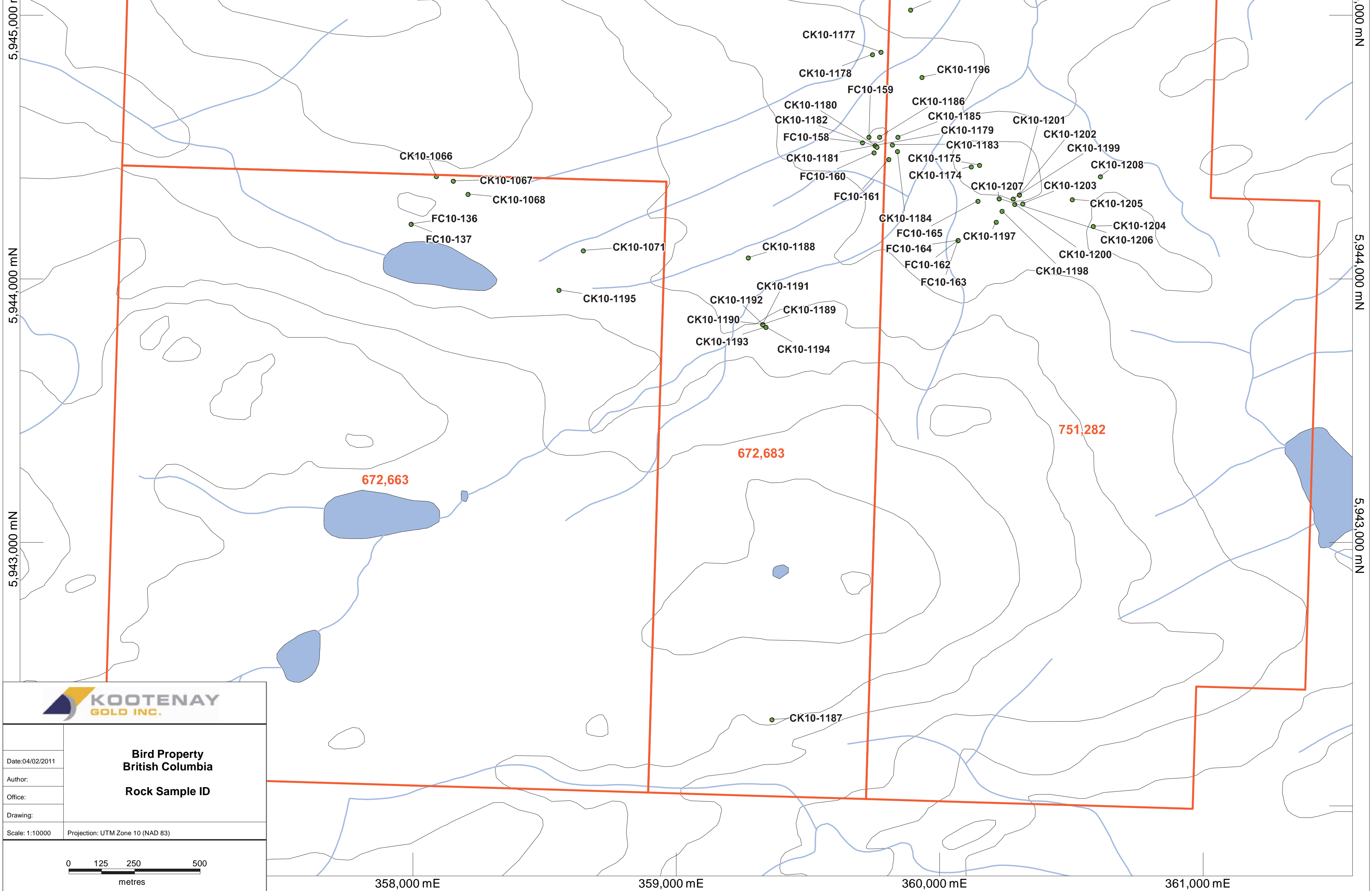
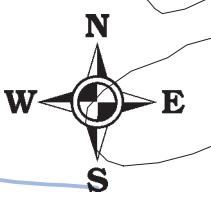






**Legend**

- Rock Sample ID
- Kootenay Claims
- Topography Contour
- Water Course
- Water Body



**Bird Property  
British Columbia  
Rock Sample ID**

Date: 04/02/2011	
Author:	
Office:	
Drawing:	
Scale: 1:10000	Projection: UTM Zone 10 (NAD 83)

0    125    250    500  
metres

## Appendix #2 - Assay Analysis



1020 Cordova St. East Vancouver BC V6A 4A3 Canada

Acme Analytical Laboratories (Vancouver) Ltd.

[www.acmelab.com](http://www.acmelab.com)

**Client:** **Kootenay Gold Inc.**  
Suite 920 - 1055 W. Hastings St.  
Vancouver BC V6E 2E9 Canada

Submitted By: Email Distribution List  
Receiving Lab: Canada-Vancouver  
Received: July 29, 2010  
Report Date: August 17, 2010  
Page: 1 of 3

## CERTIFICATE OF ANALYSIS

VAN10003605.1

### CLIENT JOB INFORMATION

Project: Bird  
Shipment ID:  
P.O. Number  
Number of Samples: 43

### SAMPLE PREPARATION AND ANALYTICAL PROCEDURES

Method Code	Number of Samples	Code Description	Test Wgt (g)	Report Status	Lab
R200-250	43	Crush, split and pulverize 250 g rock to 200 mesh			VAN
1DX3	43	1:1:1 Aqua Regia digestion ICP-MS analysis	30	Completed	VAN

### SAMPLE DISPOSAL

DISP-PLP Dispose of Pulp After 90 days  
DISP-RJT Dispose of Reject After 90 days

### ADDITIONAL COMMENTS

Acme does not accept responsibility for samples left at the laboratory after 90 days without prior written instructions for sample storage or return.

Invoice To: Kootenay Gold Inc.  
Suite 920 - 1055 W. Hastings St.  
Vancouver BC V6E 2E9  
Canada

CC:



This report supersedes all previous preliminary and final reports with this file number dated prior to the date on this certificate. Signature indicates final approval; preliminary reports are unsigned and should be used for reference only. All results are considered the confidential property of the client. Acme assumes the liabilities for actual cost of analysis only. \*\* asterisk indicates that an analytical result could not be provided due to unusually high levels of interference from other elements.



Acme Analytical Laboratories (Vancouver) Ltd.  
 1020 Cordova St. East Vancouver BC V6A 4A3 Canada  
 Phone (604) 253-3158 Fax (604) 253-1716

www.acmelab.com

Client: **Kootenay Gold Inc.**  
 Suite 920 - 1055 W. Hastings St.  
 Vancouver BC V6E 2E9 Canada

Project: Bird  
 Report Date: August 17, 2010

Page: 2 of 3 Part 1

CERTIFICATE OF ANALYSIS

VAN10003605.1

Method	WGHT	1DX30	1DX30	1DX30	1DX30	1DX30	1DX30	1DX30	1DX30	1DX30	1DX30	1DX30	1DX30	1DX30	1DX30	1DX30	1DX30	1DX30	1DX30	1DX30	1DX30
Analyte	Wgt	Mo	Cu	Pb	Zn	Ag	Ni	Co	Mn	Fe	As	Au	Th	Sr	Cd	Sb	Bi	V	Ca	P	
Unit	kg	ppm	ppm	ppm	ppm	ppm	ppm	ppm	ppm	%	ppm	ppb	ppm	ppm	ppm	ppm	ppm	ppm	%	%	
MDL	0.01	0.1	0.1	0.1	1	0.1	0.1	0.1	1	0.01	0.5	0.5	0.1	1	0.1	0.1	0.1	2	0.01	0.001	
CK10-1174	Rock	0.72	0.4	158.0	7.2	77	<0.1	2.7	23.1	1304	5.22	5.3	4.4	0.6	43	0.1	0.2	<0.1	185	2.06	0.115
CK10-1175	Rock	0.63	0.2	66.5	1.6	84	<0.1	4.6	24.4	1273	4.71	5.4	<0.5	0.5	61	<0.1	0.5	<0.1	132	1.31	0.102
CK10-1176	Rock	0.33	17.5	78.5	4.3	42	1.2	1.4	9.8	467	3.41	515.7	556.8	0.3	9	<0.1	6.4	<0.1	36	0.14	0.067
CK10-1177	Rock	0.51	0.6	77.1	2.6	29	<0.1	1.5	9.8	475	1.78	16.1	5.5	0.4	33	0.2	0.2	<0.1	71	9.57	0.085
CK10-1178	Rock	0.51	0.5	54.4	1.2	75	<0.1	1.1	11.6	1313	4.59	10.7	3.6	0.7	44	<0.1	0.2	<0.1	98	2.88	0.178
CK10-1179	Rock	0.60	5.9	257.1	15.5	48	0.4	5.9	23.1	822	8.55	567.3	27.0	1.3	11	<0.1	6.2	0.3	160	0.44	0.128
CK10-1180	Rock	0.74	1.7	1154	1.7	76	0.3	3.7	18.3	1314	4.11	128.2	4.2	0.5	40	0.2	0.7	<0.1	134	4.77	0.080
CK10-1181	Rock	0.52	1.4	239.6	5.3	76	0.2	5.7	28.0	1357	6.14	104.7	8.2	1.1	10	<0.1	1.9	0.1	146	0.44	0.126
CK10-1182	Rock	0.61	0.5	129.4	2.4	78	0.1	1.9	19.4	1051	4.83	58.6	9.7	0.6	32	0.1	0.6	<0.1	115	4.13	0.112
CK10-1183	Rock	0.54	1.1	226.8	2.5	17	<0.1	0.8	6.6	342	8.59	13.9	1.1	0.8	37	<0.1	1.7	<0.1	64	0.51	0.127
CK10-1184	Rock	0.50	0.6	84.5	2.3	76	<0.1	1.1	13.9	1188	4.40	6.4	<0.5	0.9	43	<0.1	0.3	<0.1	80	1.33	0.149
CK10-1185	Rock	0.55	1.6	120.2	2.5	28	<0.1	1.0	9.5	601	3.98	17.0	2.4	0.7	20	<0.1	0.5	<0.1	92	0.41	0.154
CK10-1186	Rock	0.40	0.8	77.0	2.0	73	<0.1	2.2	10.4	811	3.91	17.8	0.6	1.0	19	<0.1	0.4	<0.1	95	0.51	0.132
CK10-1187	Rock	0.29	0.5	6.4	1.8	48	<0.1	2.9	7.1	224	2.40	3.0	<0.5	7.4	87	<0.1	0.3	<0.1	62	0.37	0.119
CK10-1188	Rock	0.50	0.9	1.1	8.1	15	<0.1	0.3	0.2	37	0.23	3.7	<0.5	12.9	6	<0.1	0.6	<0.1	<2	0.04	0.008
CK10-1189	Rock	0.43	4.2	18.1	4.8	4	0.2	1.8	0.3	26	0.54	28.5	2.5	0.1	61	<0.1	20.3	<0.1	13	0.01	0.019
CK10-1190	Rock	0.39	6.5	13.4	2.7	30	<0.1	23.9	4.7	104	1.88	47.9	8.6	0.1	63	<0.1	15.1	0.1	26	0.01	0.023
CK10-1191	Rock	0.44	1.7	6.9	2.2	3	<0.1	1.7	0.2	32	0.32	14.4	5.5	<0.1	17	<0.1	12.2	<0.1	7	<0.01	0.005
CK10-1192	Rock	0.54	2.8	13.8	3.1	7	<0.1	2.6	0.3	38	0.45	18.1	5.7	0.1	29	<0.1	12.5	<0.1	12	<0.01	0.006
CK10-1193	Rock	0.39	2.1	22.6	1.6	40	<0.1	8.5	0.9	46	1.31	17.1	4.1	0.1	21	<0.1	12.7	<0.1	18	<0.01	0.010
CK10-1194	Rock	0.42	9.2	42.7	3.5	34	<0.1	10.3	1.0	95	3.96	126.0	5.1	0.1	32	<0.1	26.2	0.1	28	<0.01	0.027
CK10-1195	Rock	0.47	0.4	20.4	3.0	74	<0.1	20.2	16.0	536	3.35	<0.5	1.7	4.5	95	<0.1	0.1	<0.1	131	0.94	0.162
CK10-1196	Rock	0.60	0.2	3.1	1.6	34	<0.1	1.7	3.9	489	1.47	1.0	2.4	1.7	42	<0.1	0.2	<0.1	16	1.31	0.031
CK10-1197	Rock	0.53	0.4	137.7	1.4	74	0.1	2.2	14.5	955	4.16	4.9	2.6	0.4	55	<0.1	0.4	<0.1	90	1.27	0.121
CK10-1198	Rock	0.48	0.6	52.7	1.8	41	<0.1	2.1	10.0	617	2.85	0.6	3.1	0.7	123	<0.1	0.2	<0.1	82	4.24	0.115
CK10-1199	Rock	0.38	0.2	154.0	1.0	58	<0.1	3.1	21.3	828	3.44	2.8	2.3	0.3	133	<0.1	0.4	<0.1	90	1.62	0.102
CK10-1200	Rock	0.86	0.3	538.4	2.2	62	0.3	1.8	19.4	637	2.50	11.4	20.4	0.2	134	0.2	0.4	<0.1	89	1.90	0.076
CK10-1201	Rock	0.53	0.2	263.0	0.9	94	<0.1	3.0	29.6	1195	5.11	4.1	7.9	0.4	56	<0.1	0.2	<0.1	126	1.00	0.128
CK10-1202	Rock	0.58	0.4	748.7	1.5	49	0.2	2.0	14.2	706	2.41	5.0	5.6	0.2	137	0.1	0.4	<0.1	62	2.61	0.048
CK10-1203	Rock	0.53	<0.1	158.3	1.3	98	<0.1	3.5	23.9	1577	4.49	5.0	1.7	0.4	79	0.2	0.2	<0.1	130	1.33	0.079

This report supersedes all previous preliminary and final reports with this file number dated prior to the date on this certificate. Signature indicates final approval; preliminary reports are unsigned and should be used for reference only.





Acme Analytical Laboratories (Vancouver) Ltd.  
 1020 Cordova St. East Vancouver BC V6A 4A3 Canada  
 Phone (604) 253-3158 Fax (604) 253-1716

www.acmelab.com

Client: **Kootenay Gold Inc.**  
 Suite 920 - 1055 W. Hastings St.  
 Vancouver BC V6E 2E9 Canada

Project: Bird  
 Report Date: August 17, 2010

Page: 2 of 3 Part 2

CERTIFICATE OF ANALYSIS

VAN10003605.1

Method	Analyte	1DX30	1DX30	1DX30	1DX30	1DX30	1DX30	1DX30	1DX30	1DX30	1DX30	1DX30	1DX30	1DX30	1DX30	1DX30	1DX30	1DX30
		La	Cr	Mg	Ba	Ti	B	Al	Na	K	W	Hg	Sc	Tl	S	Ga	Se	Te
Unit		ppm	ppm	%	ppm	%	ppm	%	%	ppm	ppm	ppm	ppm	%	ppm	ppm	ppm	
MDL		1	1	0.01	1	0.001	1	0.01	0.001	0.01	0.1	0.01	0.1	0.05	1	0.5	0.2	
CK10-1174	Rock	6	<1	2.15	272	0.317	5	2.61	0.078	0.10	<0.1	<0.01	8.3	<0.1	<0.05	11	<0.5	<0.2
CK10-1175	Rock	3	2	2.47	94	0.141	2	3.13	0.035	0.05	<0.1	0.01	8.5	<0.1	<0.05	10	<0.5	<0.2
CK10-1176	Rock	5	4	0.67	84	0.004	<1	1.07	0.042	0.10	<0.1	0.13	2.2	<0.1	1.25	5	11.6	<0.2
CK10-1177	Rock	4	7	0.40	8	0.155	5	4.87	0.013	0.01	<0.1	0.01	3.1	<0.1	0.15	19	<0.5	<0.2
CK10-1178	Rock	9	1	1.52	9	0.159	3	2.40	0.054	0.06	<0.1	<0.01	7.3	<0.1	0.06	11	<0.5	<0.2
CK10-1179	Rock	7	5	0.98	29	0.285	1	1.73	0.080	0.05	0.2	0.04	11.5	<0.1	0.60	10	6.7	0.6
CK10-1180	Rock	5	3	1.33	27	0.124	2	2.05	0.035	0.05	<0.1	0.01	10.1	<0.1	0.06	10	<0.5	<0.2
CK10-1181	Rock	7	1	1.01	27	0.259	1	1.71	0.086	0.04	0.2	0.05	11.8	<0.1	0.51	10	2.7	0.3
CK10-1182	Rock	4	<1	1.27	153	0.220	7	4.63	0.034	0.05	0.2	<0.01	9.6	<0.1	0.13	21	0.8	<0.2
CK10-1183	Rock	3	<1	0.53	95	0.180	<1	1.10	0.083	0.10	<0.1	0.02	2.9	0.2	0.11	10	3.7	<0.2
CK10-1184	Rock	12	1	0.87	56	0.033	7	1.71	0.102	0.08	<0.1	0.01	5.5	<0.1	0.34	12	<0.5	<0.2
CK10-1185	Rock	6	<1	0.76	62	0.165	<1	1.41	0.102	0.08	0.1	0.01	6.6	<0.1	0.24	9	0.6	<0.2
CK10-1186	Rock	6	3	1.23	97	0.175	1	1.69	0.074	0.08	<0.1	<0.01	6.1	<0.1	0.08	11	<0.5	<0.2
CK10-1187	Rock	30	5	0.21	232	0.073	<1	0.97	0.051	0.15	<0.1	<0.01	7.7	<0.1	<0.05	4	<0.5	<0.2
CK10-1188	Rock	36	2	0.02	5	0.003	<1	0.19	0.050	0.10	<0.1	0.33	1.5	<0.1	<0.05	1	<0.5	<0.2
CK10-1189	Rock	<1	13	<0.01	264	0.001	<1	0.30	0.002	0.05	0.2	0.43	1.4	<0.1	<0.05	1	1.7	<0.2
CK10-1190	Rock	<1	19	<0.01	233	0.001	2	0.21	0.002	0.04	0.3	0.10	2.3	<0.1	<0.05	1	1.6	<0.2
CK10-1191	Rock	<1	16	<0.01	91	<0.001	<1	0.16	0.001	0.03	0.1	0.24	0.4	<0.1	<0.05	<1	<0.5	<0.2
CK10-1192	Rock	<1	17	<0.01	107	<0.001	1	0.24	0.002	0.05	0.2	0.35	1.0	<0.1	<0.05	1	<0.5	<0.2
CK10-1193	Rock	<1	12	<0.01	51	0.001	1	0.22	0.002	0.04	0.2	0.08	1.1	<0.1	<0.05	1	0.8	<0.2
CK10-1194	Rock	<1	16	<0.01	140	0.001	1	0.21	0.002	0.04	0.4	0.31	1.7	<0.1	<0.05	2	5.0	<0.2
CK10-1195	Rock	32	54	0.50	56	0.060	<1	1.13	0.218	0.09	<0.1	<0.01	13.9	<0.1	<0.05	4	<0.5	<0.2
CK10-1196	Rock	11	7	0.71	38	0.002	<1	0.64	0.058	0.13	<0.1	<0.01	1.5	<0.1	<0.05	4	<0.5	<0.2
CK10-1197	Rock	3	3	1.59	45	0.078	4	2.37	0.144	0.06	<0.1	0.03	4.1	<0.1	0.09	8	<0.5	<0.2
CK10-1198	Rock	6	3	0.68	34	0.190	5	2.59	0.025	0.03	<0.1	<0.01	4.2	<0.1	<0.05	12	<0.5	0.4
CK10-1199	Rock	4	<1	1.47	10	0.251	4	2.09	0.011	<0.01	<0.1	<0.01	3.1	<0.1	<0.05	6	<0.5	<0.2
CK10-1200	Rock	3	4	0.87	23	0.228	4	1.68	0.011	0.02	<0.1	0.01	2.9	<0.1	<0.05	5	<0.5	<0.2
CK10-1201	Rock	5	2	2.17	25	0.286	2	2.75	0.040	0.04	<0.1	<0.01	5.2	<0.1	<0.05	8	<0.5	<0.2
CK10-1202	Rock	2	4	0.86	30	0.158	2	1.82	0.002	0.02	<0.1	<0.01	3.2	<0.1	<0.05	5	<0.5	<0.2
CK10-1203	Rock	4	2	2.08	99	0.293	2	2.41	0.037	0.04	<0.1	<0.01	12.9	<0.1	<0.05	9	<0.5	<0.2

This report supersedes all previous preliminary and final reports with this file number dated prior to the date on this certificate. Signature indicates final approval; preliminary reports are unsigned and should be used for reference only.



Acme Analytical Laboratories (Vancouver) Ltd.  
 1020 Cordova St. East Vancouver BC V6A 4A3 Canada  
 Phone (604) 253-3158 Fax (604) 253-1716

www.acmelab.com

Client: **Kootenay Gold Inc.**  
 Suite 920 - 1055 W. Hastings St.  
 Vancouver BC V6E 2E9 Canada

Project: Bird  
 Report Date: August 17, 2010

Page: 3 of 3 Part 1

CERTIFICATE OF ANALYSIS

VAN10003605.1

Method	WGHT	1DX30	1DX30	1DX30	1DX30	1DX30	1DX30	1DX30	1DX30	1DX30	1DX30	1DX30	1DX30	1DX30	1DX30	1DX30	1DX30	1DX30	1DX30	1DX30	1DX30
Analyte	Wgt	Mo	Cu	Pb	Zn	Ag	Ni	Co	Mn	Fe	As	Au	Th	Sr	Cd	Sb	Bi	V	Ca	P	
Unit	kg	ppm	ppm	ppm	ppm	ppm	ppm	ppm	ppm	%	ppm	ppb	ppm	ppm	ppm	ppm	ppm	ppm	%	%	
MDL	0.01	0.1	0.1	0.1	1	0.1	0.1	0.1	1	0.01	0.5	0.5	0.1	1	0.1	0.1	0.1	2	0.01	0.001	
CK10-1204	Rock	0.46	0.3	153.9	1.1	84	<0.1	3.1	23.6	1128	5.22	1.1	2.0	0.6	42	<0.1	0.2	<0.1	165	1.84	0.094
CK10-1205	Rock	0.50	0.2	72.4	1.9	75	<0.1	8.2	22.3	2042	5.36	20.6	2.2	0.3	56	0.2	0.3	<0.1	148	4.18	0.092
CK10-1206	Rock	0.63	0.2	155.3	1.5	66	<0.1	4.4	27.4	1118	4.66	14.5	6.9	0.3	38	<0.1	0.3	<0.1	151	0.86	0.071
CK10-1207	Rock	0.56	0.1	210.6	1.6	74	0.1	6.5	19.1	863	3.46	14.3	7.7	0.2	75	<0.1	0.3	<0.1	100	1.16	0.082
CK10-1208	Rock	0.61	0.3	122.4	1.1	86	<0.1	5.6	24.9	1608	5.66	1.1	1.9	0.6	35	<0.1	0.4	<0.1	120	0.89	0.114
FC-158	Rock	0.45	0.5	127.2	0.7	57	<0.1	2.8	18.3	902	4.81	1.8	1.7	0.4	25	<0.1	0.2	<0.1	140	0.87	0.078
FC-159	Rock	0.68	0.5	95.4	2.3	68	<0.1	3.5	17.7	807	3.95	7.9	9.7	0.8	20	<0.1	0.1	<0.1	85	2.74	0.107
FC-160	Rock	0.55	1.0	81.4	3.2	70	<0.1	3.5	13.0	885	4.25	14.9	3.3	0.9	27	<0.1	0.8	<0.1	106	0.99	0.109
FC-161	Rock	0.48	4.3	109.1	5.6	80	0.2	7.8	9.1	391	4.10	56.0	1.1	0.8	13	0.2	1.1	0.2	111	0.30	0.107
FC-162	Rock	0.69	2.0	174.5	2.4	81	<0.1	4.8	15.0	922	4.60	27.4	2.4	0.9	36	<0.1	0.4	<0.1	149	1.71	0.125
FC-163	Rock	0.57	0.2	294.5	1.3	77	0.1	7.4	17.5	1154	4.40	1.7	2.3	1.4	46	<0.1	0.2	<0.1	176	2.67	0.167
FC-164	Rock	0.40	0.5	174.3	1.0	100	<0.1	9.6	20.5	1402	4.39	1.4	2.1	1.4	30	<0.1	0.2	<0.1	154	1.20	0.177
FC-165	Rock	0.37	0.2	77.5	1.3	58	<0.1	3.5	15.9	1406	3.50	6.1	1.7	0.2	38	<0.1	0.2	<0.1	91	3.49	0.064



Acme Analytical Laboratories (Vancouver) Ltd.  
 1020 Cordova St. East Vancouver BC V6A 4A3 Canada  
 Phone (604) 253-3158 Fax (604) 253-1716

www.acmelab.com

Client: **Kootenay Gold Inc.**  
 Suite 920 - 1055 W. Hastings St.  
 Vancouver BC V6E 2E9 Canada

Project: Bird  
 Report Date: August 17, 2010

Page: 3 of 3 Part 2

CERTIFICATE OF ANALYSIS

VAN10003605.1

Method	Analyte	1DX30	1DX30	1DX30	1DX30	1DX30	1DX30	1DX30	1DX30	1DX30	1DX30	1DX30	1DX30	1DX30	1DX30	1DX30	1DX30	
		La	Cr	Mg	Ba	Ti	B	Al	Na	K	W	Hg	Sc	Tl	S	Ga	Se	Te
Unit		ppm	ppm	%	ppm	%	ppm	%	%	ppm	ppm	ppm	ppm	%	ppm	ppm	ppm	
MDL		1	1	0.01	1	0.001	1	0.01	0.001	0.01	0.1	0.01	0.1	0.05	1	0.5	0.2	
CK10-1204	Rock	5	1	2.07	19	0.316	2	2.28	0.077	0.06	<0.1	<0.01	10.5	<0.1	<0.05	10	<0.5	<0.2
CK10-1205	Rock	6	6	1.99	71	0.056	2	2.54	0.041	0.08	<0.1	0.03	8.8	<0.1	<0.05	11	<0.5	<0.2
CK10-1206	Rock	2	<1	2.20	50	0.300	2	2.50	0.044	0.06	<0.1	0.01	8.5	<0.1	0.05	9	<0.5	<0.2
CK10-1207	Rock	2	<1	1.63	52	0.310	2	2.04	0.041	0.05	<0.1	0.01	3.7	<0.1	0.06	6	<0.5	<0.2
CK10-1208	Rock	6	3	1.94	104	0.061	3	2.80	0.078	0.16	<0.1	0.02	10.0	<0.1	<0.05	11	<0.5	<0.2
FC-158	Rock	4	2	1.73	136	0.233	2	2.45	0.079	0.09	0.1	<0.01	9.1	<0.1	<0.05	11	<0.5	<0.2
FC-159	Rock	7	5	1.21	92	0.209	5	3.06	0.056	0.04	0.1	0.01	4.9	<0.1	<0.05	14	<0.5	<0.2
FC-160	Rock	5	2	1.57	163	0.234	1	2.31	0.102	0.09	0.2	0.02	6.7	<0.1	0.13	15	<0.5	<0.2
FC-161	Rock	7	7	0.71	62	0.018	<1	1.47	0.071	0.09	<0.1	0.03	4.7	0.1	0.64	10	2.5	<0.2
FC-162	Rock	7	3	1.63	73	0.131	2	2.62	0.118	0.07	0.1	0.02	8.7	<0.1	0.15	14	0.7	<0.2
FC-163	Rock	11	2	1.67	60	0.048	2	2.06	0.045	0.09	0.1	0.01	9.2	<0.1	<0.05	10	<0.5	<0.2
FC-164	Rock	10	3	1.90	86	0.031	1	2.22	0.049	0.13	<0.1	<0.01	9.2	<0.1	<0.05	12	<0.5	<0.2
FC-165	Rock	4	3	1.26	45	0.050	1	1.73	0.028	0.06	<0.1	0.04	7.5	<0.1	<0.05	6	<0.5	<0.2



Acme Analytical Laboratories (Vancouver) Ltd.  
 1020 Cordova St. East Vancouver BC V6A 4A3 Canada  
 Phone (604) 253-3158 Fax (604) 253-1716

www.acmelab.com

Client: **Kootenay Gold Inc.**  
 Suite 920 - 1055 W. Hastings St.  
 Vancouver BC V6E 2E9 Canada

Project: Bird  
 Report Date: August 17, 2010

Page: 1 of 1 Part 1

QUALITY CONTROL REPORT

VAN10003605.1

Method	WGHT	1DX30	1DX30	1DX30	1DX30	1DX30	1DX30	1DX30	1DX30	1DX30	1DX30	1DX30	1DX30	1DX30	1DX30	1DX30	1DX30	1DX30	1DX30	1DX30	1DX30
Analyte	Wgt	Mo	Cu	Pb	Zn	Ag	Ni	Co	Mn	Fe	As	Au	Th	Sr	Cd	Sb	Bi	V	Ca	P	
Unit	kg	ppm	ppm	ppm	ppm	ppm	ppm	ppm	ppm	%	ppm	ppb	ppm	ppm	ppm	ppm	ppm	ppm	%	%	
MDL	0.01	0.1	0.1	0.1	1	0.1	0.1	0.1	1	0.01	0.5	0.5	0.1	1	0.1	0.1	0.1	2	0.01	0.001	
Pulp Duplicates																					
CK10-1183	Rock	0.54	1.1	226.8	2.5	17	<0.1	0.8	6.6	342	8.59	13.9	1.1	0.8	37	<0.1	1.7	<0.1	64	0.51	0.127
REP CK10-1183	QC		1.2	234.8	2.6	17	<0.1	0.8	6.8	362	9.05	14.3	0.9	0.8	38	<0.1	1.8	<0.1	72	0.51	0.131
Reference Materials																					
STD DS7	Standard		22.0	117.8	78.1	403	1.1	56.0	9.9	642	2.47	47.3	430.5	4.6	76	5.8	5.4	4.7	87	0.99	0.069
STD DS7	Standard		22.4	119.8	70.6	411	1.0	56.8	10.0	644	2.42	47.5	71.7	4.6	78	6.1	5.4	4.6	85	0.98	0.072
STD DS7	Standard		21.0	130.9	65.5	383	1.0	54.8	10.1	603	2.39	55.0	79.2	4.9	72	6.7	6.0	5.2	84	0.97	0.092
STD DS7	Standard		22.9	123.4	67.3	412	1.0	59.7	10.8	630	2.51	58.9	73.5	4.9	77	7.0	6.1	5.0	88	1.03	0.086
STD DS7 Expected			20.5	109	70.6	411	0.9	56	9.7	627	2.39	48.2	70	4.4	69	6.4	4.6	4.5	84	0.93	0.08
BLK	Blank		<0.1	<0.1	<0.1	<1	<0.1	<0.1	<0.1	<1	<0.01	<0.5	<0.5	<0.1	<1	<0.1	<0.1	<0.1	<2	<0.01	<0.001
BLK	Blank		<0.1	0.5	<0.1	<1	<0.1	<0.1	<0.1	<1	<0.01	<0.5	<0.5	<0.1	<1	<0.1	<0.1	<0.1	<2	<0.01	<0.001
Prep Wash																					
G1	Prep Blank	<0.01	0.1	5.0	7.0	53	<0.1	3.2	5.1	614	2.13	<0.5	<0.5	6.6	68	<0.1	<0.1	<0.1	40	0.59	0.094
G1	Prep Blank	<0.01	<0.1	3.3	4.3	48	<0.1	3.3	4.8	570	2.01	<0.5	<0.5	6.8	59	<0.1	<0.1	<0.1	38	0.52	0.102



Acme Analytical Laboratories (Vancouver) Ltd.

1020 Cordova St. East Vancouver BC V6A 4A3 Canada

Phone (604) 253-3158 Fax (604) 253-1716

www.acmelab.com

**Client:** Kootenay Gold Inc.  
Suite 920 - 1055 W. Hastings St.  
Vancouver BC V6E 2E9 Canada

**Project:** Bird

**Report Date:** August 17, 2010

**Page:** 1 of 1 Part 2

# QUALITY CONTROL REPORT

VAN10003605.1

Method		1DX30	1DX30	1DX30	1DX30	1DX30	1DX30	1DX30	1DX30	1DX30	1DX30	1DX30	1DX30	1DX30	1DX30	1DX30	1DX30	1DX30
Analyte		La	Cr	Mg	Ba	Ti	B	Al	Na	K	W	Hg	Sc	Tl	S	Ga	Se	Te
Unit		ppm	ppm	%	ppm	%	ppm	%	%	%	ppm	ppm	ppm	ppm	%	ppm	ppm	ppm
MDL		1	1	0.01	1	0.001	1	0.01	0.001	0.01	0.1	0.01	0.1	0.1	0.05	1	0.5	0.2
Pulp Duplicates																		
CK10-1183	Rock	3	<1	0.53	95	0.180	<1	1.10	0.083	0.10	<0.1	0.02	2.9	0.2	0.11	10	3.7	<0.2
REP CK10-1183	QC	3	<1	0.56	102	0.182	<1	1.16	0.085	0.10	<0.1	0.02	3.2	0.2	0.12	10	3.6	<0.2
Reference Materials																		
STD DS7	Standard	14	215	1.08	397	0.142	39	1.04	0.097	0.45	3.7	0.24	2.3	4.5	0.19	5	3.6	1.8
STD DS7	Standard	13	214	1.05	341	0.140	37	1.06	0.096	0.45	3.6	0.23	2.6	4.2	0.19	5	3.1	1.3
STD DS7	Standard	13	193	1.04	386	0.140	40	1.03	0.100	0.44	3.6	0.21	2.8	4.0	0.19	5	3.1	1.2
STD DS7	Standard	14	205	1.10	413	0.141	40	1.10	0.106	0.48	3.6	0.22	3.0	3.9	0.20	6	3.4	1.1
STD DS7 Expected		12	179	1.05	410	0.124	39	0.959	0.089	0.44	3.4	0.2	2.5	4.2	0.19	5	3.5	1.08
BLK	Blank	<1	<1	<0.01	<1	<0.001	<1	<0.01	<0.001	<0.01	<0.1	<0.01	<0.1	<0.1	<0.05	<1	<0.5	<0.2
BLK	Blank	<1	<1	<0.01	<1	<0.001	<1	<0.01	<0.001	<0.01	<0.1	<0.01	<0.1	<0.1	<0.05	<1	<0.5	<0.2
Prep Wash																		
G1	Prep Blank	16	11	0.56	203	0.155	1	1.07	0.099	0.53	0.1	<0.01	2.8	0.3	<0.05	6	<0.5	<0.2
G1	Prep Blank	14	11	0.54	199	0.146	<1	0.96	0.082	0.51	0.1	<0.01	2.4	0.3	<0.05	5	<0.5	<0.2



1020 Cordova St. East Vancouver BC V6A 4A3 Canada  
Phone (604) 253-3158 Fax (604) 253-1716

Acme Analytical Laboratories (Vancouver) Ltd.

[www.acmelab.com](http://www.acmelab.com)

**Client:** **Kootenay Gold Inc.**  
Suite 920 - 1055 W. Hastings St.  
Vancouver BC V6E 2E9 Canada

Submitted By: Email Distribution List  
Receiving Lab: Canada-Vancouver  
Received: June 24, 2010  
Report Date: July 07, 2010  
Page: 1 of 2

## CERTIFICATE OF ANALYSIS

VAN10002913.1

### CLIENT JOB INFORMATION

Project: Bird  
Shipment ID:  
P.O. Number  
Number of Samples: 9

### SAMPLE PREPARATION AND ANALYTICAL PROCEDURES

Method Code	Number of Samples	Code Description	Test Wgt (g)	Report Status	Lab
R200-250	9	Crush, split and pulverize 250 g rock to 200 mesh			VAN
1DX3	9	1:1:1 Aqua Regia digestion ICP-MS analysis	30	Completed	VAN

### SAMPLE DISPOSAL

DISP-PLP Dispose of Pulp After 90 days  
DISP-RJT Dispose of Reject After 90 days

### ADDITIONAL COMMENTS

Acme does not accept responsibility for samples left at the laboratory after 90 days without prior written instructions for sample storage or return.

Invoice To: Kootenay Gold Inc.  
Suite 920 - 1055 W. Hastings St.  
Vancouver BC V6E 2E9  
Canada

CC:



This report supersedes all previous preliminary and final reports with this file number dated prior to the date on this certificate. Signature indicates final approval; preliminary reports are unsigned and should be used for reference only.  
All results are considered the confidential property of the client. Acme assumes the liabilities for actual cost of analysis only.  
\*\* asterisk indicates that an analytical result could not be provided due to unusually high levels of interference from other elements.



Acme Analytical Laboratories (Vancouver) Ltd.  
 1020 Cordova St. East Vancouver BC V6A 4A3 Canada  
 Phone (604) 253-3158 Fax (604) 253-1716

www.acmelab.com

Client: **Kootenay Gold Inc.**  
 Suite 920 - 1055 W. Hastings St.  
 Vancouver BC V6E 2E9 Canada

Project: Bird  
 Report Date: July 07, 2010

Page: 2 of 2 Part 1

CERTIFICATE OF ANALYSIS

VAN10002913.1

Method	WGHT	1DX30	1DX30	1DX30	1DX30	1DX30	1DX30	1DX30	1DX30	1DX30	1DX30	1DX30	1DX30	1DX30	1DX30	1DX30	1DX30	1DX30	1DX30	1DX30	1DX30
Analyte	Wgt	Mo	Cu	Pb	Zn	Ag	Ni	Co	Mn	Fe	As	U	Au	Th	Sr	Cd	Sb	Bi	V	Ca	
Unit	kg	ppm	ppm	ppm	ppm	ppm	ppm	ppm	ppm	%	ppm	ppm	ppb	ppm	ppm	ppm	ppm	ppm	ppm	%	
MDL	0.01	0.1	0.1	0.1	1	0.1	0.1	0.1	1	0.01	0.5	0.1	0.5	0.1	1	0.1	0.1	0.1	2	0.01	
CK10-1066	Rock	0.62	1.5	10.3	5.3	332	<0.1	4.4	25.5	4188	12.49	3.2	6.2	<0.5	6.8	56	0.4	0.2	0.1	73	0.35
CK10-1067	Rock	0.86	1.0	10.1	1.9	63	<0.1	1.8	7.0	471	2.70	5.0	2.0	<0.5	6.4	65	<0.1	0.2	<0.1	40	0.61
CK10-1068	Rock	0.81	1.0	46.2	1.1	75	<0.1	325.6	48.1	1096	6.33	0.9	0.2	<0.5	1.1	257	<0.1	<0.1	<0.1	81	1.43
CK10-1069	Rock	0.52	0.7	9.9	9.3	107	<0.1	2.2	5.9	578	2.46	3.3	1.3	<0.5	4.9	268	<0.1	0.2	<0.1	65	0.70
CK10-1070	Rock	1.27	1.0	12.6	6.1	85	<0.1	2.1	7.8	544	2.78	2.4	1.4	<0.5	8.5	56	<0.1	0.2	<0.1	62	0.55
CK10-1071	Rock	0.82	67.3	7.4	21.3	17	0.4	1.6	0.7	26	0.73	111.9	0.7	0.9	4.7	18	<0.1	9.1	0.4	<2	0.02
FC 136	Rock	0.50	6.1	0.8	7.3	3	0.3	1.4	0.3	47	0.26	20.4	1.6	3.4	8.2	4	<0.1	1.5	0.1	<2	<0.01
FC 137	Rock	0.65	6.2	0.8	7.6	2	0.6	1.1	0.3	50	0.28	20.7	1.5	4.3	8.4	4	<0.1	1.8	0.1	<2	<0.01
FC 138	Rock	0.69	9.6	2.0	6.7	2	0.6	1.0	0.2	32	0.50	693.0	0.8	53.2	5.3	18	<0.1	17.6	<0.1	<2	<0.01



Acme Analytical Laboratories (Vancouver) Ltd.  
 1020 Cordova St. East Vancouver BC V6A 4A3 Canada  
 Phone (604) 253-3158 Fax (604) 253-1716

www.acmelab.com

Client: **Kootenay Gold Inc.**  
 Suite 920 - 1055 W. Hastings St.  
 Vancouver BC V6E 2E9 Canada

Project: Bird  
 Report Date: July 07, 2010

Page: 2 of 2 Part 2

CERTIFICATE OF ANALYSIS

VAN10002913.1

Method	1DX30	1DX30	1DX30	1DX30	1DX30	1DX30	1DX30	1DX30	1DX30	1DX30	1DX30	1DX30	1DX30	1DX30	1DX30	1DX30	1DX30	1DX30	1DX30
Analyte	P	La	Cr	Mg	Ba	Ti	B	Al	Na	K	W	Hg	Sc	Tl	S	Ga	Se	Te	
Unit	%	ppm	ppm	%	ppm	%	ppm	%	%	%	ppm	ppm	ppm	ppm	%	ppm	ppm	ppm	
MDL	0.001	1	1	0.01	1	0.001	1	0.01	0.001	0.01	0.1	0.01	0.1	0.1	0.05	1	0.5	0.2	
CK10-1066	Rock	0.203	36	2	0.46	294	0.113	<1	1.31	0.053	0.16	<0.1	0.03	9.3	<0.1	<0.05	5	<0.5	<0.2
CK10-1067	Rock	0.258	44	2	0.22	233	0.062	<1	0.58	0.068	0.21	<0.1	0.01	4.5	<0.1	<0.05	3	<0.5	<0.2
CK10-1068	Rock	0.323	26	140	5.70	56	0.132	1	2.46	0.683	0.48	0.1	<0.01	1.4	<0.1	<0.05	6	<0.5	<0.2
CK10-1069	Rock	0.222	36	2	0.26	788	0.078	<1	0.93	0.056	0.27	<0.1	0.02	7.2	<0.1	<0.05	4	<0.5	<0.2
CK10-1070	Rock	0.242	44	2	0.12	187	0.045	<1	0.61	0.060	0.12	<0.1	0.02	7.7	<0.1	<0.05	4	0.6	<0.2
CK10-1071	Rock	0.008	17	11	0.02	71	<0.001	<1	0.26	0.004	0.19	0.1	0.15	0.3	0.2	0.26	<1	<0.5	0.6
FC 136	Rock	0.007	33	9	<0.01	18	0.003	<1	0.16	0.005	0.22	<0.1	0.43	0.3	0.1	<0.05	<1	<0.5	<0.2
FC 137	Rock	0.006	33	9	<0.01	17	0.003	<1	0.15	0.005	0.21	<0.1	0.56	0.3	0.2	<0.05	<1	<0.5	<0.2
FC 138	Rock	0.007	20	10	<0.01	49	<0.001	<1	0.10	0.001	0.13	<0.1	0.07	0.2	<0.1	0.09	<1	<0.5	0.4





Acme Analytical Laboratories (Vancouver) Ltd.

1020 Cordova St. East Vancouver BC V6A 4A3 Canada  
 Phone (604) 253-3158 Fax (604) 253-1716

www.acmelab.com

**Client:** Kootenay Gold Inc.  
 Suite 920 - 1055 W. Hastings St.  
 Vancouver BC V6E 2E9 Canada

**Project:** Bird  
**Report Date:** July 07, 2010

**Page:** 1 of 1 **Part** 1

QUALITY CONTROL REPORT

VAN10002913.1

Method	WGHT	1DX30	1DX30	1DX30	1DX30	1DX30	1DX30	1DX30	1DX30	1DX30	1DX30	1DX30	1DX30	1DX30	1DX30	1DX30	1DX30	1DX30	1DX30	1DX30	
Analyte	Wgt	Mo	Cu	Pb	Zn	Ag	Ni	Co	Mn	Fe	As	U	Au	Th	Sr	Cd	Sb	Bi	V	Ca	
Unit	kg	ppm	ppm	ppm	ppm	ppm	ppm	ppm	ppm	%	ppm	ppm	ppb	ppm	ppm	ppm	ppm	ppm	ppm	%	
MDL	0.01	0.1	0.1	0.1	1	0.1	0.1	0.1	1	0.01	0.5	0.1	0.5	0.1	1	0.1	0.1	0.1	2	0.01	
Reference Materials																					
STD DS7	Standard	20.3	112.8	66.9	392	1.0	57.3	9.7	639	2.46	54.8	4.8	81.5	4.4	78	6.6	5.8	4.6	86	0.98	
STD DS7	Standard	20.9	115.6	65.8	415	1.0	57.2	9.4	664	2.48	55.0	5.2	56.9	4.3	78	6.8	6.3	4.5	87	1.00	
STD DS7 Expected		20.5	109	70.6	411	0.9	56	9.7	627	2.39	48.2	4.9	70	4.4	69	6.4	4.6	4.5	84	0.93	
BLK	Blank	<0.1	<0.1	<0.1	<1	<0.1	<0.1	<0.1	<1	<0.01	<0.5	<0.1	<0.5	<0.1	<1	<0.1	<0.1	<0.1	<2	<0.01	
Prep Wash																					
G1	Prep Blank	<0.01	0.2	3.3	3.0	45	<0.1	2.0	3.5	541	1.89	0.6	1.6	<0.5	5.3	64	<0.1	<0.1	<0.1	38	0.50



Acme Analytical Laboratories (Vancouver) Ltd.

1020 Cordova St. East Vancouver BC V6A 4A3 Canada

Phone (604) 253-3158 Fax (604) 253-1716

www.acmelab.com

**Client:** Kootenay Gold Inc.  
Suite 920 - 1055 W. Hastings St.  
Vancouver BC V6E 2E9 Canada

**Project:** Bird

**Report Date:** July 07, 2010

**Page:** 1 of 1 Part 2

## QUALITY CONTROL REPORT

VAN10002913.1

Method	1DX30	1DX30	1DX30	1DX30	1DX30	1DX30	1DX30	1DX30	1DX30	1DX30	1DX30	1DX30	1DX30	1DX30	1DX30	1DX30	1DX30	1DX30	
Analyte	P	La	Cr	Mg	Ba	Ti	B	Al	Na	K	W	Hg	Sc	Tl	S	Ga	Se	Te	
Unit	%	ppm	ppm	%	ppm	%	ppm	%	%	%	ppm	ppm	ppm	ppm	%	ppm	ppm	ppm	
MDL	0.001	1	1	0.01	1	0.001	1	0.01	0.001	0.01	0.1	0.01	0.1	0.1	0.05	1	0.5	0.2	
Reference Materials																			
STD DS7	Standard	0.082	13	194	1.06	400	0.127	40	1.05	0.097	0.48	3.9	0.24	2.6	4.0	0.21	5	3.2	1.1
STD DS7	Standard	0.080	14	200	1.08	417	0.133	36	1.08	0.099	0.51	4.1	0.23	2.7	4.0	0.21	5	3.5	1.3
STD DS7 Expected		0.08	12	179	1.05	410	0.124	39	0.959	0.089	0.44	3.4	0.2	2.5	4.2	0.19	5	3.5	1.08
BLK	Blank	<0.001	<1	<1	<0.01	<1	<0.001	<1	<0.01	<0.001	<0.01	<0.1	<0.01	<0.1	<0.1	<0.05	<1	<0.5	<0.2
Prep Wash																			
G1	Prep Blank	0.078	15	10	0.45	118	0.123	<1	0.84	0.102	0.44	<0.1	<0.01	2.0	0.3	<0.05	5	<0.5	<0.2