

Ministry of Energy, Mines & Petroleum Resources
Mining & Minerals Division
BC Geological Survey

Assessment Report
Title Page and Summary

TYPE OF REPORT [type of survey(s)]: Rock Geochemistry

TOTAL COST: \$1,802

AUTHOR(S): Sean Kennedy

SIGNATURE(S): 

NOTICE OF WORK PERMIT NUMBER(S)/DATE(S): _____

YEAR OF WORK: 2010

STATEMENT OF WORK - CASH PAYMENTS EVENT NUMBER(S)/DATE(S): 4840207 - FEB 28/11

PROPERTY NAME: South Slocanny Granny

CLAIM NAME(S) (on which the work was done): 709602, 709642

COMMODITIES SOUGHT: _____

MINERAL INVENTORY MINFILE NUMBER(S), IF KNOWN: _____

MINING DIVISION: Nelson

NTS/BCGS: 82F 048, 058, 059

LATITUDE: _____ ° _____ ' _____ "

LONGITUDE: _____ ° _____ ' _____ "

(at centre of work)

OWNER(S):

1) Sean Kennedy

2) _____

MAILING ADDRESS:

107 6th Ave Kimberley, BC

OPERATOR(S) [who paid for the work]:

1) Kootenay Gold Inc

2) _____

MAILING ADDRESS:

Suite 920 - 1055 W. Hastings St.

Vancouver, British Columbia

PROPERTY GEOLOGY KEYWORDS (lithology, age, stratigraphy, structure, alteration, mineralization, size and attitude):

Precious and base metals hosted in breccias and quartz veins associated with iron oxides, carbonate, sericite, and phyllite within a north-south trending structural zone in Precambrian Kitchener (?) formation quartzite, dolomite, siltstones and argillite.

REFERENCES TO PREVIOUS ASSESSMENT WORK AND ASSESSMENT REPORT NUMBERS: _____

TYPE OF WORK IN THIS REPORT	EXTENT OF WORK (IN METRIC UNITS)	ON WHICH CLAIMS	PROJECT COSTS APPORTIONED (incl. support)
GEOLOGICAL (scale, area)			
Ground, mapping			
Photo interpretation			
GEOPHYSICAL (line-kilometres)			
Ground			
Magnetic			
Electromagnetic			
Induced Polarization			
Radiometric			
Seismic			
Other			
Airborne			
GEOCHEMICAL (number of samples analysed for...)			
Soil			
Silt			
Rock 17 samples plus wages		709602, 709642	\$1352
Other			
DRILLING (total metres; number of holes, size)			
Core			
Non-core			
RELATED TECHNICAL			
Sampling/assaying			
Petrographic			
Mineralographic			
Metallurgic			
PROSPECTING (scale, area)			
PREPARATORY / PHYSICAL			
Line/grid (kilometres)			
Topographic/Photogrammetric (scale, area)			
Legal surveys (scale, area)			
Road, local access (kilometres)/trail			
Trench (metres)			
Underground dev. (metres)			
Other Report writing and miscellaneous			\$450
TOTAL COST:			\$1802

Rock Geochemistry Report

South Slocanny Granny Mineral Claims

Nelson Mining Division

NTS 82F 048/058/059

Meachen Creek Area

Southeast BC

BC Geological Survey
Assessment Report
32262

Operator: Kootenay Gold Inc

Owner: Sean Kennedy

Report Written By Sean Kennedy, Prospector

April, 2011

Table of Contents

Introduction	Page 3
Location and Access	Page 3
Property	Page 3
History	Page 3
Physiography	Page 3
Property Geology	Page 3
Rock Geochemistry	Page 6
Conclusions and Recommendations	Page 6
Statement of Costs	Page 7
Statement of Qualifications	Page 7
Rock Sample Locations and Descriptions	Page 9
List of Illustrations	
Property Location Map	Page 4
Property Map	Page 5
Rock Sample Location Map with Gold in ppb	Page 8
Appendix-Rock Sample Assays	Page 10

INTRODUCTION

During the field season of 2010 a program consisting of rock sampling was conducted on the South Slocanny Granny mineral claims in southeast BC. The area is underlain by reverted crown-grants which cover structurally controlled Cu-Pb-Zn-Ag-Au mineralization predominantly in quartz veins and shears. Very limited recent work has been undertaken in the area and preliminary rock sampling was utilized as a first pass.

LOCATION AND ACCESS

The claims are located in southeast BC approximately 40 kilometers southeast of the city of Kimberley near the headwaters of Meachen Creek and the south flowing Goat River.

Access to the property is provided by the main Meachen Creek FSR which is driveable to near the western edge of the claims. From there the property is accessed by foot.

PROPERTY

The property consists of four mineral tenures; 709602, 709642, 831189, 831190. The property is wholly owned by Sean Kennedy of Kimberley BC. The work was funded by Kootenay Gold Inc under a first right of refusal.

HISTORY

The property covers a number of historical workings including adits and handtrenches. The workings are primarily on Cu-Pb-Zn bearing quartz +/- carbonate veins and stockworks. Small rock sampling programs have been conducted on and adjacent to the claims. More recently Jasper Mining flew a geophysical survey over part of the area.

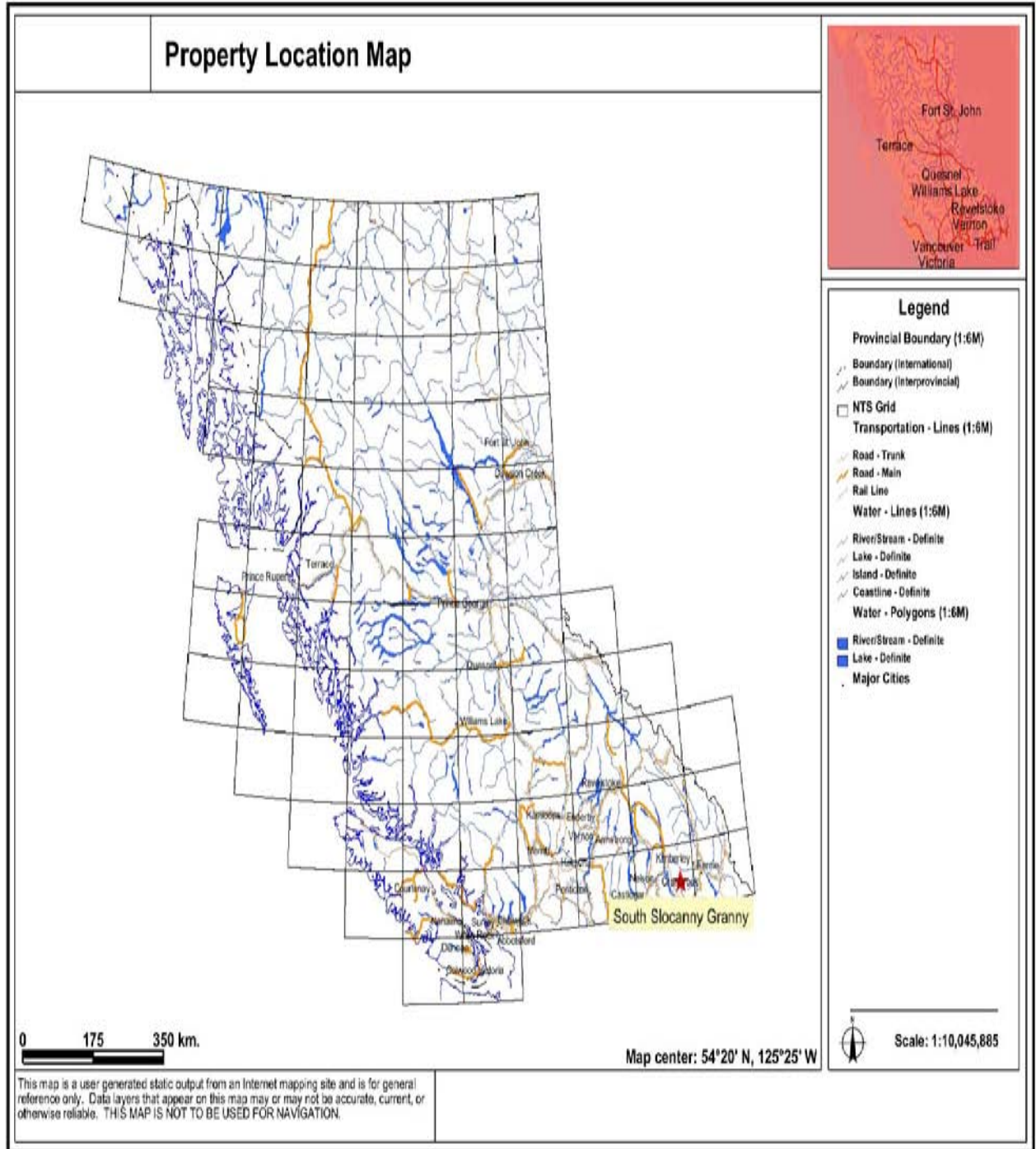
PHYSIOGRAPHY

The property is in the rugged Purcell Mountains. Vertical relief in the area is in excess of 1500 meters. Timber is comprised of pine, spruce, balsam, larch and fir. Vegetation is mostly alder, and huckleberry. The topography is generally steep with open basins in the sub-alpine. The property does rise above tree-line.

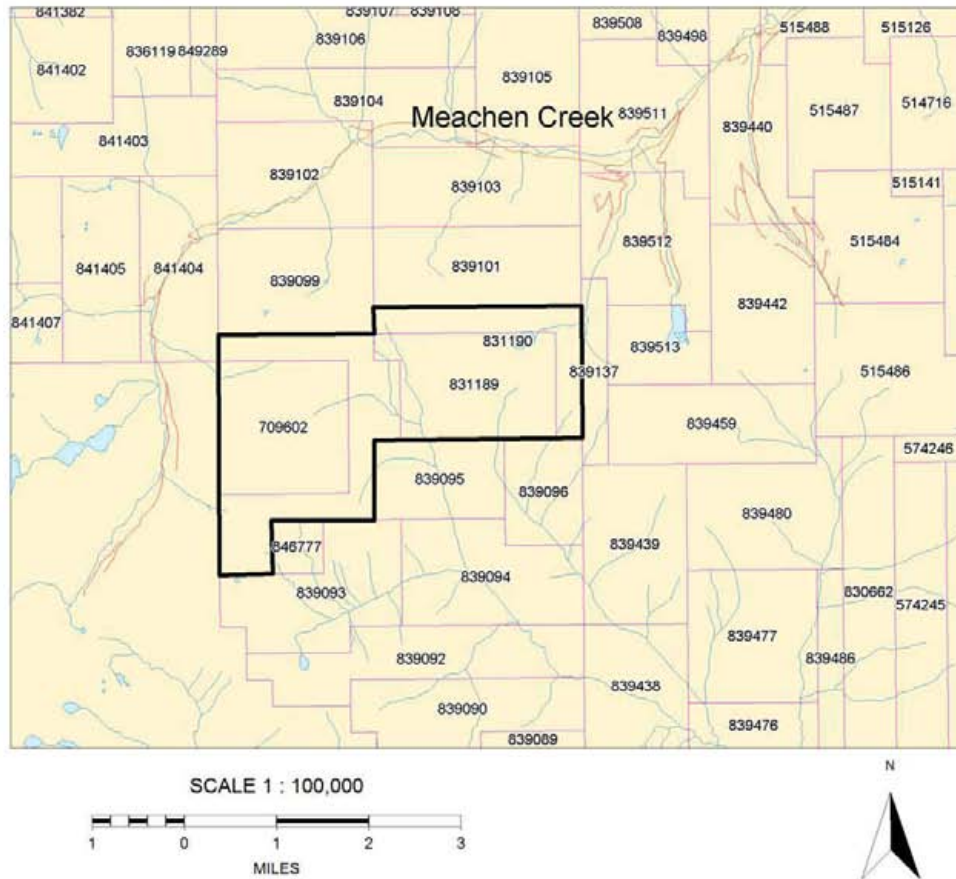
PROPERTY GEOLOGY

The property is underlain by clastic rocks of the Belt-Purcell Supergroup. Formations on the claim block include the Aldridge, Creston, and Kitchener which grade from deep water turbidites of the Aldridge to shallow water siltstone and argillite of the Creston to carbonate and quartzitic/argillaceous Kitchener. The area has been intruded by syn-depositional gabbro-diorite dykes and sills, predominantly in the Aldridge as well as later greenstone/lamprophyre dykes. The area has also been intruded by Cretaceous acid intrusions of the Bayonne magmatic suite which locally hornfels and skarn the country rock.

Bedding is generally north-south striking with some open to closed fold structures. Shearing and alteration follow a north-south trend on the property.



South Slocanny Granny Claim Map



ROCK GEOCHEMISTRY

During the program 17 rock samples were collected and sent to Acme Labs in Vancouver to be assayed for a 31 element group IDX with gold in ppb. Sample locations and descriptions are located on page 8. A map showing sample locations with gold in ppb is on page 7. Sample results are located in the Appendix.

Samples were collected from the southern portion of the claims and were taken from quartz veins and alteration within a phyllitic shear, base metal bearing quartz-magnesite veins in a carbonate unit and from zones of brecciation and veining adjacent to a greenstone dyke within a fold closure. Samples collected mostly from the dyke area were of quartz sulphide veins and stockworks in brecciated quartzites. The samples returned values of anomalous gold (up to 162 ppb), silver (up to 50 ppm) and highly elevated values for Cu, Zn, Pb, As, Bi, Sb, Co, and Te. The breccia itself thickens to greater than 15 meters and is on strike with a zone of brecciation and sulphide flooding that can be traced across the central portion of the property.

CONCLUSIONS AND RECOMMENDATIONS

17 rock samples were collected from the South Slocanny Granny mineral claims in August 2010. The most interesting area sampled was a zone of brecciated quartzites adjacent to a greenstone dyke, the breccia reaches widths in excess of 15 meters and can be traced across central portion of the property. Samples from this area contained anomalous values for Au, Ag, Cu, Zn, Pb, As, Bi, Sb, Co, and Te.

Additional prospecting and rock geochemistry is warranted across the remainder of the property. A soil grid should be established to test the extension of the breccias to the north in areas of cover. A ground based geophysical survey could be completed along the soil grid and possibly married to the airborne data generated by Jasper Mining. Geological mapping should focus on identifying structural intersections and fold geometries to predict where breccias/stockwork blowouts occur. The area should then be systematically drill tested along the strike of the mineralized corridor.

STATEMENT OF COSTS

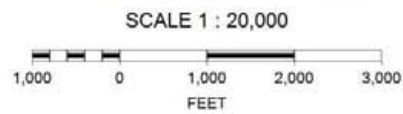
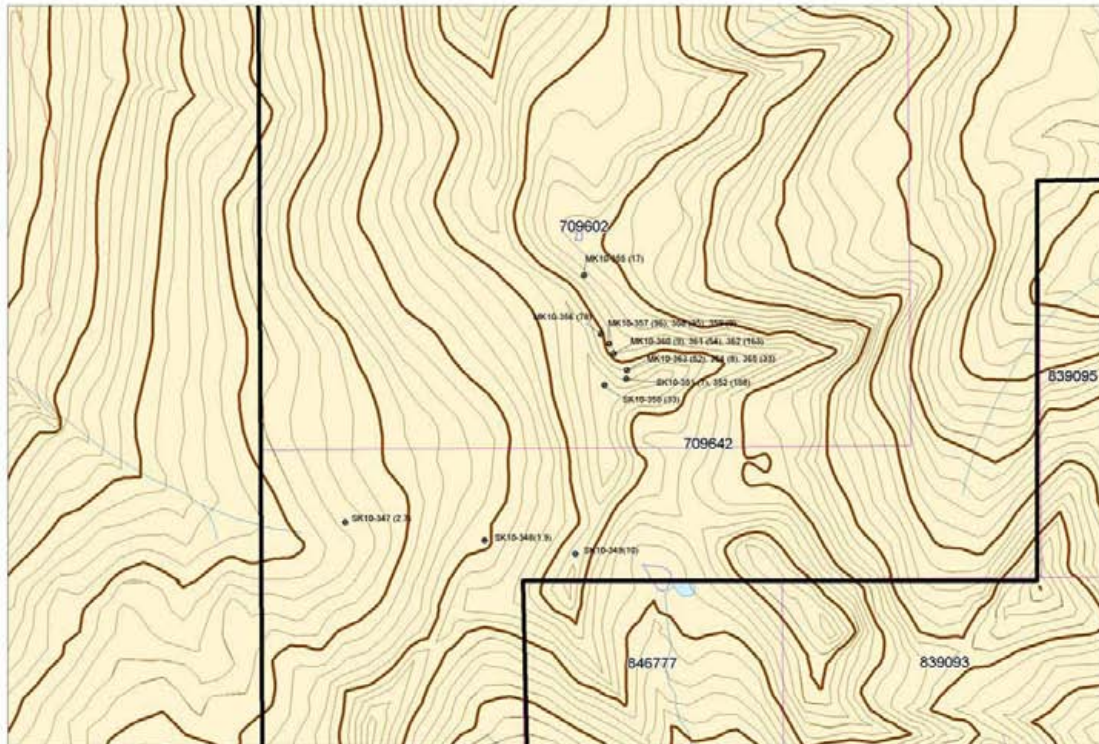
Number of Samples:	17	\$ 502.00
	(includes freight)	
Sean Kennedy:	Aug 23	
	1 Man days @ 350	350.00
	1 Report day @ 350	350.00
	Maps & Misc.	100.00
Mike Kennedy:	Aug 23	
	1 Man days @ 350	350.00
	4X4 Truck	150.00
	Total	<u>\$ 1,802.00</u>

STATEMENT OF QUALIFICATIONS

I, Sean Kennedy, certify that:

1. I am an independent prospector residing at 107 6h Ave, Kimberley, BC.
2. I have been actively prospecting in the throughout BC, Nevada, and Mexico for the past 15 years
3. I have been employed as a professional prospector by junior mineral exploration companies.
4. I own and maintain mineral claims in BC.

South Slocanny Granny Rock Samples Gold in ppb



ROCK SAMPLE LOCATIONS AND DESCRIPTIONS

Sample #	UTM E	UTM N	Description
SK10-347	538645	5483682	Silicified/chloritized shear, py/hem, carb, trends NS > 5 m wide, actinolite, possible calc-silicate
SK10-348	539180	5483474	Tremolitic skarned float, PbS, ZnS, Mn, Cpy
SK10-349	539516	5483331	Old workings on qtz and magnesite/Ba veins w/PbS/Cpy veins 16/90
SK10-350	539603	5483827	Greenstone dyke, 170 trend, at contact old hantrench, qtz w/goe, hem, ser
SK10-351	539647	5483856	Greenstone dyke flares out and qtz bx is developed in qtzite, Mn, goe wad, veins over 5 meters, zone is in fold hinge
SK10-352	539653	5483857	Same zone, Bi?, vuggy qtz w/goe
Mk10-355	539512	5484222	Oc small qtz fract breccia.
Mk10-356	539589	5483994	Oc 2 foot micro qtz breccia+lim.
Mk10-357	539619	5483960	Float lim in qtz narrow zone.
Mk10-358	539618	5483954	Float lim hem stained wad qtz carb.
Mk10-359	539628	5483940	Float small qtz veins lim rich, F+sc.
Mk10-360	539628	5483939	Oc lim Py rich qtz material.220trend
Mk10-361	539640	5483939	Oc lim Py rich qtz material.220trend
Mk10-362	539642	5483942	Oc lim Py rich qtz material.220trend
Mk10-363	539661	5483868	Float qtz lim+Py.
Mk10-364	539661	5483870	Float semi massive Py+1foot peice.
Mk10-365	539661	5483871	Oc Mega zone Bi, qtz.
Mk10-366	539661	5483871	Oc Mega zone Bi, qtz.
Mk10-367	539661	5483871	Oc Mega zone Bi, qtz.

Appendix-Rock Sample Assays



1020 Cordova St. East Vancouver BC V6A 4A3 Canada

Acme Analytical Laboratories (Vancouver) Ltd.

www.acmelab.com

Client: **Kootenay Gold Inc.**
Suite 920 - 1055 W. Hastings St.
Vancouver BC V6E 2E9 Canada

Submitted By: Email Distribution List
Receiving Lab: Canada-Vancouver
Received: August 24, 2010
Report Date: September 15, 2010
Page: 1 of 2

CERTIFICATE OF ANALYSIS

VAN10004129.1

CLIENT JOB INFORMATION

Project: SLOCANNY GRANNY
Shipment ID:
P.O. Number
Number of Samples: 17

SAMPLE DISPOSAL

DISP-PLP Dispose of Pulp After 90 days
DISP-RJT Dispose of Reject After 90 days

Acme does not accept responsibility for samples left at the laboratory after 90 days without prior written instructions for sample storage or return.

Invoice To: Kootenay Gold Inc.
Suite 920 - 1055 W. Hastings St.
Vancouver BC V6E 2E9
Canada

CC:

SAMPLE PREPARATION AND ANALYTICAL PROCEDURES

Method Code	Number of Samples	Code Description	Test Wgt (g)	Report Status	Lab
R200-250	17	Crush, split and pulverize 250 g rock to 200 mesh			VAN
1DX3	17	1:1:1 Aqua Regia digestion ICP-MS analysis	30	Completed	VAN
7AR	1	1:1:1 Aqua Regia Digestion ICP-ES Finish	0.4	Completed	VAN

ADDITIONAL COMMENTS



This report supersedes all previous preliminary and final reports with this file number dated prior to the date on this certificate. Signature indicates final approval; preliminary reports are unsigned and should be used for reference only. All results are considered the confidential property of the client. Acme assumes the liabilities for actual cost of analysis only. ** asterisk indicates that an analytical result could not be provided due to unusually high levels of interference from other elements.



Acme Analytical Laboratories (Vancouver) Ltd.
 1020 Cordova St. East Vancouver BC V6A 4A3 Canada
 Phone (604) 253-3158 Fax (604) 253-1716

www.acmelab.com

Client: **Kootenay Gold Inc.**
 Suite 920 - 1055 W. Hastings St.
 Vancouver BC V6E 2E9 Canada

Project: SLOCANNY GRANNY
 Report Date: September 15, 2010

Page: 2 of 2 Part 1

CERTIFICATE OF ANALYSIS

VAN10004129.1

Method	WGHT	1DX30	1DX30	1DX30	1DX30	1DX30	1DX30	1DX30	1DX30	1DX30	1DX30	1DX30	1DX30	1DX30	1DX30	1DX30	1DX30	1DX30	1DX30	1DX30	
Analyte	Wgt	Mo	Cu	Pb	Zn	Ag	Ni	Co	Mn	Fe	As	U	Au	Th	Sr	Cd	Sb	Bi	V	Ca	
Unit	kg	ppm	ppm	ppm	ppm	ppm	ppm	ppm	ppm	%	ppm	ppm	ppb	ppm	ppm	ppm	ppm	ppm	ppm	%	
MDL	0.01	0.1	0.1	0.1	1	0.1	0.1	0.1	1	0.01	0.5	0.1	0.5	0.1	1	0.1	0.1	0.1	2	0.01	
SK10-347	Rock	0.93	0.6	107.1	53.5	36	1.2	5.1	16.4	263	1.59	4.5	0.4	2.7	3.4	5	0.4	0.2	9.8	6	0.79
SK10-348	Rock	0.58	1.0	14.8	447.1	7551	1.0	1.4	3.4	1006	0.58	4.1	0.3	1.9	0.2	42	51.0	4.4	0.6	<2	9.52
SK10-349	Rock	0.60	0.2	26.4	8266	3057	7.9	1.2	3.7	2750	4.04	33.6	0.4	10.0	<0.1	123	43.0	18.3	2.1	2	14.67
SK10-350	Rock	0.82	1.8	315.0	61.8	57	1.9	17.7	29.9	200	8.03	210.7	1.9	33.5	5.9	<1	0.6	73.9	16.8	10	0.02
SK10-351	Rock	0.93	2.1	372.3	58.2	76	0.3	14.6	12.8	588	10.96	47.0	4.3	6.9	3.8	1	0.7	10.3	158.0	14	0.04
SK10-352	Rock	0.66	1.6	152.2	1075	19	50.6	<0.1	1.8	125	6.99	97.2	13.7	158.6	3.2	<1	0.8	941.1	>2000	<2	<0.01
MK10-355	Rock	0.44	1.5	17.6	15.2	9	0.4	1.5	1.1	107	4.07	40.7	1.7	17.0	4.7	5	<0.1	2.1	42.3	5	0.02
MK10-356	Rock	0.31	2.9	>10000	8.7	14	6.6	107.3	215.5	71	34.63	727.2	3.8	78.4	0.9	<1	0.2	18.0	502.3	6	0.01
MK10-357	Rock	0.45	1.1	473.0	182.3	78	24.6	2.3	12.8	165	6.17	532.6	2.6	96.2	9.1	<1	0.6	414.4	132.9	3	0.02
MK10-358	Rock	0.54	0.4	132.0	10.0	3	1.4	2.8	5.7	98	6.90	276.4	1.1	35.3	4.5	2	<0.1	3.1	123.2	4	0.03
MK10-359	Rock	0.45	1.3	115.9	74.0	47	1.0	3.2	2.5	177	11.70	221.7	0.9	9.4	3.1	7	0.3	11.9	52.8	5	0.02
MK10-360	Rock	0.59	2.4	875.9	3.4	5	0.7	4.2	34.2	472	18.43	126.5	1.1	8.9	2.3	<1	0.1	3.8	68.1	18	0.01
MK10-361	Rock	0.47	0.8	40.1	18.9	4	0.5	22.5	29.1	199	13.51	139.3	3.0	54.7	0.4	<1	0.1	3.6	11.0	14	<0.01
MK10-362	Rock	0.64	1.1	329.3	12.7	19	1.1	3.7	24.7	165	15.23	239.6	1.5	162.9	1.7	2	0.4	14.2	294.6	3	<0.01
MK10-363	Rock	0.97	0.6	299.0	185.3	14	6.8	2.2	6.9	129	3.66	254.5	0.8	52.7	2.1	<1	0.1	99.0	>2000	<2	<0.01
MK10-364	Rock	0.74	0.3	128.7	162.6	35	3.6	1.2	0.9	139	2.71	15.0	0.9	8.6	6.0	<1	<0.1	65.9	>2000	3	<0.01
MK10-365	Rock	0.89	3.0	290.7	177.5	4	3.2	<0.1	20.6	64	5.46	79.6	1.6	33.3	10.0	<1	<0.1	79.3	>2000	7	<0.01



Acme Analytical Laboratories (Vancouver) Ltd.
 1020 Cordova St. East Vancouver BC V6A 4A3 Canada
 Phone (604) 253-3158 Fax (604) 253-1716

www.acmelab.com

Client: **Kootenay Gold Inc.**
 Suite 920 - 1055 W. Hastings St.
 Vancouver BC V6E 2E9 Canada

Project: SLOCANNY GRANNY
 Report Date: September 15, 2010

Page: 2 of 2 Part 2

CERTIFICATE OF ANALYSIS

VAN10004129.1

Method	1DX30	1DX30	1DX30	1DX30	1DX30	1DX30	1DX30	1DX30	1DX30	1DX30	1DX30	1DX30	1DX30	1DX30	1DX30	1DX30	1DX30	1DX30	1DX30	7AR
Analyte	P	La	Cr	Mg	Ba	Ti	B	Al	Na	K	W	Hg	Sc	Tl	S	Ga	Se	Te	Cu	
Unit	%	ppm	ppm	%	ppm	%	ppm	%	%	%	ppm	ppm	ppm	ppm	%	ppm	ppm	ppm	%	
MDL	0.001	1	1	0.01	1	0.001	1	0.01	0.001	0.01	0.1	0.01	0.1	0.1	0.05	1	0.5	0.2	0.001	
SK10-347	Rock	0.028	4	9	0.44	33	0.060	3	0.79	0.022	0.10	0.3	<0.01	0.9	<0.1	0.17	2	<0.5	<0.2	
SK10-348	Rock	0.017	<1	2	3.60	11	<0.001	<1	<0.01	0.004	<0.01	<0.1	1.74	0.4	<0.1	0.31	<1	<0.5	<0.2	
SK10-349	Rock	0.019	<1	1	7.22	22	<0.001	<1	<0.01	0.010	<0.01	<0.1	0.18	2.1	<0.1	0.35	<1	0.8	<0.2	
SK10-350	Rock	0.038	18	5	0.04	50	0.003	5	0.55	0.003	0.19	0.3	0.08	2.1	<0.1	<0.05	<1	0.9	1.6	
SK10-351	Rock	0.063	7	10	0.12	101	0.001	10	0.51	0.005	0.09	1.4	0.03	1.6	0.1	<0.05	1	0.5	0.7	
SK10-352	Rock	0.038	2	4	<0.01	18	<0.001	43	0.06	<0.001	0.02	<0.1	0.19	0.9	<0.1	<0.05	<1	10.6	339.2	
MK10-355	Rock	0.038	18	7	0.15	41	0.006	4	0.36	0.004	0.31	<0.1	0.01	1.0	0.1	0.19	2	1.0	3.0	
MK10-356	Rock	0.032	6	5	0.04	25	<0.001	4	0.04	<0.001	<0.01	1.0	0.01	0.6	<0.1	<0.05	<1	4.5	4.6	1.513
MK10-357	Rock	0.029	1	7	0.06	48	0.003	6	0.25	0.002	0.17	0.7	0.14	1.6	<0.1	<0.05	1	2.2	6.9	
MK10-358	Rock	0.039	18	7	0.24	109	0.003	8	0.38	0.004	0.15	0.1	0.07	0.7	<0.1	0.44	2	0.9	1.9	
MK10-359	Rock	0.080	5	10	0.04	154	0.001	4	0.14	0.009	0.11	0.8	0.03	0.7	<0.1	0.15	<1	<0.5	2.9	
MK10-360	Rock	0.034	2	14	0.10	56	0.006	2	0.29	0.003	0.01	1.3	0.03	1.3	<0.1	<0.05	6	2.4	2.9	
MK10-361	Rock	0.080	1	13	0.03	66	0.001	<1	0.13	0.004	0.05	1.1	0.03	0.8	<0.1	<0.05	<1	0.6	<0.2	
MK10-362	Rock	0.016	2	9	0.22	24	<0.001	5	0.20	0.001	<0.01	1.0	0.14	0.9	<0.1	2.34	1	1.7	15.2	
MK10-363	Rock	0.012	<1	11	0.01	44	<0.001	2	0.06	0.002	0.04	2.7	0.07	0.6	<0.1	<0.05	<1	2.7	471.9	
MK10-364	Rock	0.018	<1	7	0.02	18	<0.001	32	0.06	0.004	0.02	1.2	0.05	0.9	<0.1	<0.05	<1	0.6	22.7	
MK10-365	Rock	0.039	1	7	0.02	24	<0.001	42	0.18	<0.001	0.05	0.5	0.01	0.6	<0.1	<0.05	<1	3.9	341.8	



Acme Analytical Laboratories (Vancouver) Ltd.

1020 Cordova St. East Vancouver BC V6A 4A3 Canada
 Phone (604) 253-3158 Fax (604) 253-1716

www.acmelab.com

Client: **Kootenay Gold Inc.**
 Suite 920 - 1055 W. Hastings St.
 Vancouver BC V6E 2E9 Canada

Project: SLOCANNY GRANNY
 Report Date: September 15, 2010

Page: 1 of 1 Part 1

QUALITY CONTROL REPORT

VAN10004129.1

Method	WGHT	1DX30	1DX30	1DX30	1DX30	1DX30	1DX30	1DX30	1DX30	1DX30	1DX30	1DX30	1DX30	1DX30	1DX30	1DX30	1DX30	1DX30	1DX30	1DX30	1DX30
Analyte	Wgt	Mo	Cu	Pb	Zn	Ag	Ni	Co	Mn	Fe	As	U	Au	Th	Sr	Cd	Sb	Bi	V	Ca	
Unit	kg	ppm	ppm	ppm	ppm	ppm	ppm	ppm	ppm	%	ppm	ppm	ppb	ppm	ppm	ppm	ppm	ppm	ppm	ppm	
MDL	0.01	0.1	0.1	0.1	1	0.1	0.1	0.1	1	0.01	0.5	0.1	0.5	0.1	1	0.1	0.1	0.1	2	0.01	
Core Reject Duplicates																					
DUP G1	QC	<0.1	1.6	6.5	47	<0.1	3.0	4.1	570	2.04	<0.5	1.8	4.2	5.9	61	<0.1	<0.1	<0.1	38	0.51	
Reference Materials																					
STD DS7	Standard	21.2	113.5	67.1	392	0.9	52.5	9.0	610	2.35	51.1	5.1	72.3	5.0	73	6.6	6.0	5.1	83	0.96	
STD DS7	Standard	21.0	110.8	68.4	389	1.0	53.7	9.1	627	2.38	53.8	5.1	67.3	4.9	72	7.1	6.1	5.2	83	0.96	
STD GC-7	Standard																				
STD R4A	Standard																				
STD DS7 Expected		20.5	109	70.6	411	0.9	56	9.7	627	2.39	48.2	4.9	70	4.4	69	6.4	4.6	4.5	84	0.93	
STD GC-7 Expected																					
STD R4A Expected																					
BLK	Blank	<0.1	<0.1	<0.1	<1	<0.1	<0.1	<0.1	<1	<0.01	<0.5	<0.1	<0.5	<0.1	<1	<0.1	<0.1	<0.1	<2	<0.01	
BLK	Blank																				
Prep Wash																					
G1	Prep Blank	<0.01	<0.1	1.9	2.8	52	<0.1	3.3	4.0	598	2.02	<0.5	2.0	1.6	5.9	63	<0.1	<0.1	<0.1	37	0.52
G1	Prep Blank	<0.01	<0.1	1.5	2.7	47	<0.1	3.4	4.0	566	1.98	<0.5	1.9	6.6	6.0	57	<0.1	<0.1	<0.1	38	0.50



Acme Analytical Laboratories (Vancouver) Ltd.

1020 Cordova St. East Vancouver BC V6A 4A3 Canada
 Phone (604) 253-3158 Fax (604) 253-1716

www.acmelab.com

Client: **Kootenay Gold Inc.**
 Suite 920 - 1055 W. Hastings St.
 Vancouver BC V6E 2E9 Canada

Project: SLOCANNY GRANNY
 Report Date: September 15, 2010

Page: 1 of 1 Part 2

QUALITY CONTROL REPORT

VAN10004129.1

Method	1DX30	1DX30	1DX30	1DX30	1DX30	1DX30	1DX30	1DX30	1DX30	1DX30	1DX30	1DX30	1DX30	1DX30	1DX30	1DX30	1DX30	1DX30	7AR
Analyte	P	La	Cr	Mg	Ba	Ti	B	Al	Na	K	W	Hg	Sc	Tl	S	Ga	Se	Te	Cu
Unit	%	ppm	ppm	%	ppm	%	ppm	%	%	%	ppm	ppm	ppm	ppm	%	ppm	ppm	ppm	%
MDL	0.001	1	1	0.01	1	0.001	1	0.01	0.001	0.01	0.1	0.01	0.1	0.1	0.05	1	0.5	0.2	0.001
Core Reject Duplicates																			
DUP G1	QC	0.086	11	8	0.58	219	0.130	1	1.02	0.093	0.52	<0.1	<0.01	2.0	0.3	<0.05	5	<0.5	<0.2
Reference Materials																			
STD DS7	Standard	0.077	13	177	1.03	383	0.121	40	1.03	0.099	0.44	3.7	0.21	2.3	4.1	0.20	5	3.4	1.5
STD DS7	Standard	0.077	13	186	1.04	385	0.128	40	1.02	0.099	0.49	3.9	0.27	2.6	4.1	0.20	5	3.5	1.5
STD GC-7	Standard																		0.581
STD R4A	Standard																		0.528
STD DS7 Expected		0.08	12	179	1.05	410	0.124	39	0.959	0.089	0.44	3.4	0.2	2.5	4.2	0.19	5	3.5	1.08
STD GC-7 Expected																			0.555
STD R4A Expected																			0.502
BLK	Blank	<0.001	<1	<1	<0.01	<1	<0.001	<1	<0.01	<0.001	<0.01	<0.1	<0.01	<0.1	<0.1	<0.05	<1	<0.5	<0.2
BLK	Blank																		<0.001
Prep Wash																			
G1	Prep Blank	0.081	11	8	0.58	196	0.129	<1	1.04	0.108	0.52	<0.1	<0.01	2.1	0.3	<0.05	5	<0.5	<0.2
G1	Prep Blank	0.086	10	9	0.57	211	0.130	1	0.99	0.088	0.49	<0.1	0.01	2.1	0.3	<0.05	5	<0.5	<0.2