

ASSESSMENT REPORT
On
Rock Geochemistry

BC Geological Survey
Assessment Report
32331

Fox Property
Binta Lake Region
Omineca Mining Division

NTS 093F.093

UTM Coordinates 5976000N – 33800E

OWNER
Fred H Critchlow
Box 517
Kaslo, BC VOG 1MO

OPERATOR
Kootenay Gold Inc
Suite 920 - 1055 W. Hastings St.
Vancouver, BC V6E 2E9

REPORT BY
Craig Kennedy
2290 Dewolfe Ave
Kimberley BC V1A 1P5

May 2011

TABLE OF CONTENTS

	Page
1.00 INTRODUCTION	
1.10 Location and Access	3
1.20 Property	3
1.30 History of Previous Work	3
1.40 Summary	6
2.00 ROCK GEOCHEM PROGRAM	7
3.00 CONCLUSION	7
4.00 STATEMENT OF EXPENDITURES	8
5.00 AUTHOR'S QUALIFICATIONS	9

List of Illustrations

Figure 1. Regional Property Location Map	4
Figure 2. Claim Location Map	5
Figure 3-9 Rock Sample Maps	10
Appendix 1. Rock Sample Descriptions	17
Appendix 2. Acme Rock Geochem Analyses	21

FOX PROPERTY
ROCK GEOCHEMISTRY REPORT

Craig Kennedy

May 2011

1.00 INTRODUCTION

1.10 Location and Access

The Fox property is approximately 45 km south of the town of Burns Lake in central BC, map sheet 093F.093; UTM coordinates 5976000N – 33/8000E. Access is provided by good main and branch logging roads. Topography is moderate to gentle with a thick cover of spruce, balsam forest and dead lodgepole pine. Historic and present day forest harvesting dominates the landscape.

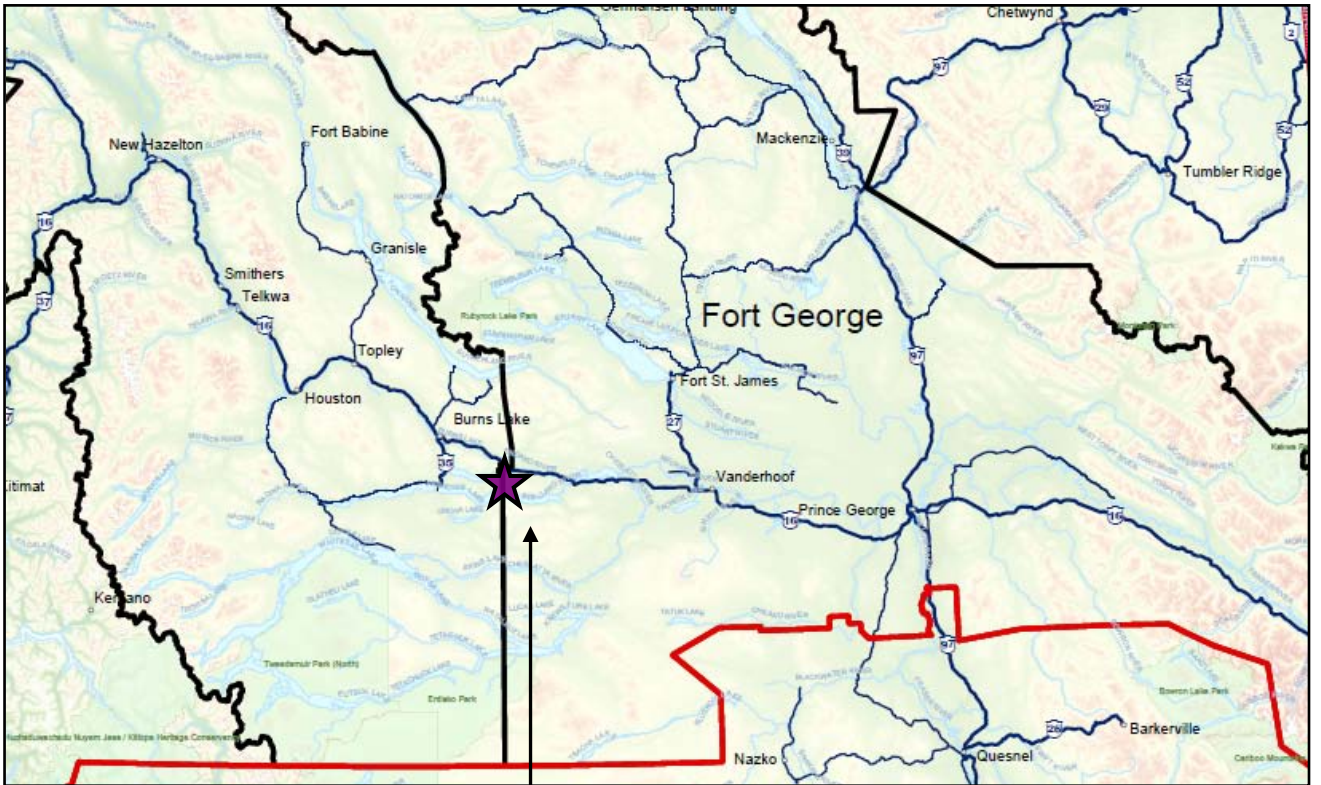
1.20 Property

The Fox Property is made up by tenures 750982 & 751002 and is owned by Fred H. Critchlow of Kaslo BC. Work on eh claims was paid for by Kootenay Gold Inc. of Vancouver BC.

1.30 History of Previous Exploration

The area has seen moderate to heavy exploration activity starting from the mid 1960's to the present. Moly-Copper porphyry and epithermal silver- gold have been the major deposit types sought. Assessment reports 13969 and 11519 report on some of the historic works.

Figure 1: Regional Location Map

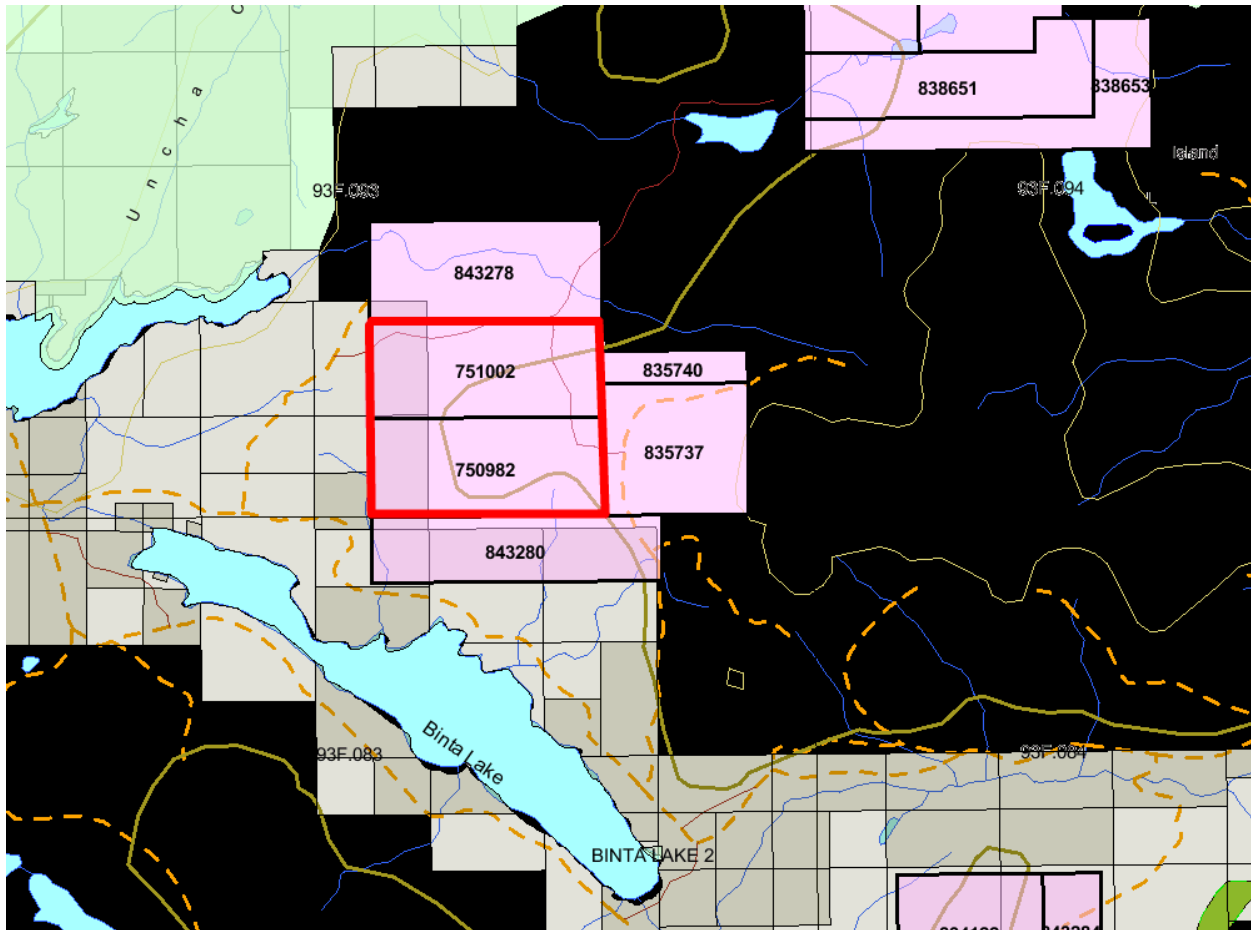


The Fox Property Location

Figure 2: Claim Location Map

Map # 093F.093

Scale 1:100,000



1.40 Summary

The Fox Property is one of a number of properties hosted by the postulated Nechako Arch. Kootenay Gold Inc. Entered into a grubstake agreement with prospector Fred Critchlow to evaluate, then elect on those properties fitting Kootenay Gold's exploration criteria.

The Nechako Arch is an exploration concept contained within a north-eastern running structural zone, which since Eocene time has been defined by strongly developed geomorphology. This geomorphology is delineated by stream and lake patterns. The general area hosts geology predominantly consisting of Jurassic through to tertiary volcanic and intrusive rocks. The metal mine which keys the area is the impressive Endako molybdenum porphyry deposit, approximately 40 kilometres to the north west of the properties. As with most of the Nechako plateau bedrock occurrence is sparse but where available provides opportunity to view prominent structure controls and alteration styles. Jurassic and cretaceous intrusive rocks and eocene volcanic rocks are the most common in Kootenay Gold's area of interest. These rocks are exposed as structural islands where northeast structure is cut by north-western structural systems.

It is speculated that the Endako deposit is a sub-hot spring system, which has been exposed by structural uplift and erosion. A key exploration clue is that the Endako mine area is host to many age and phase type intrusives, a piston geological environment. The above feature is common in Kootenay Gold's area of interest and may in fact be diagnostic of the Nechako arch. Structural blocks with hetro-genius intrusive exposures may be exposed at or below porphyry levels opening opportunity for shear zone and or stockwork gold systems.

Structural blocks with volcanic cover and hot spring alteration can be considered potential porphyry targets. These opportunities within this type of structural zone (Nechako Arch) provide encouragement for discovery of a large bulk minable gold deposit. This target type is Kootenay Gold's favoured focus.

2.00 ROCK GEOCHEMISTRY

A prospecting and rock geochemistry program has begun to delineate a Silver–Gold target on the Fox Property. In a regional context the area hosting the Fox Property is dominated by north east and north south structure. The silicification flooding, macro and micro veining is developed in varying intensity seemingly along north south structural zones.

Mineralization on the Fox claims is hosted in areas with noticeable argillic – sericite alteration, silica flooding and veining. Alteration types noted are multi colored biotite, chlorite and potassic alteration. These alterations are associated with subtly developed pyrite, hematite and occasional fluorite mineralization. Intense zones of vugging hosted limonite and live hematite were noted in a number of areas. General observations based on results to date indicate that zones with more obvious chlorite alteration tend to be less anomalous in silver and gold. Another observation of potential importance is that the best results so far obtained occur in association with a pebble dike (diatreme). The Fox claim group is host to rhyolite flows and rhyolite porphyry dikes or a plug. This geological setting with the pebble dike is providing the best mineralization to date; sample CK10-1118 represents a strong exploration target. The rhyolite flows and potential subvolcanic neck indicate the opportunity for high elevation mineralization within a porphyry setting.

3.00 CONCLUSION

As mentioned above the regional area of the Fox Property is dominated by north east and north south structure. This structural zone hosts large scale bleaching and chlorite alteration. The felsic volcanics and their porphyritic dikes indicate a high elevation mineralizing system.

4.00 STATEMENT OF EXPENDITURES

Rock Geochemistry Program
The Fox Property

Work performed: Summer 2010

Prospecting Contractors:

Fred Critchlow - 5 days @ 500/day (Includes 4x4 vehicle)	\$2500.00
Craig Kennedy - 4 days @ 350/day	1400.00
Sean Kennedy – 1 day @ 500/day (Includes 4x4 vehicle)	500.00
ATV Rental (5 days @ \$100/day)	500.00
Acme Labs – 82 rock samples (incl. freight)	2306.00
Accommodations & Food	450.00
Craig Kennedy - report preparation and writing 2 days @ 350	700.00
Misc supplies & maps, drafting, etc.	<u>400.00</u>
Total:	
<u>\$8756.00</u>	

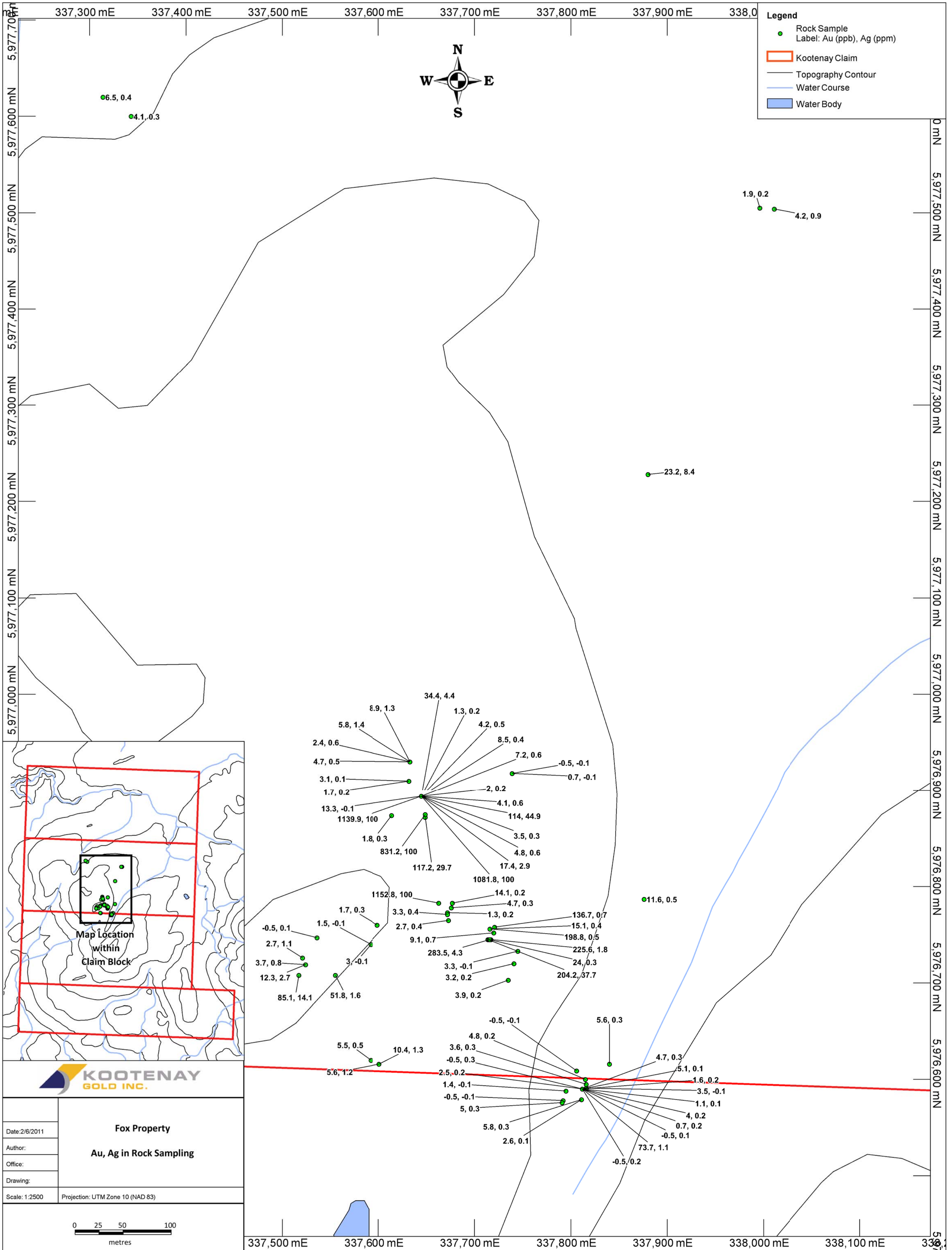
5.00 AUTHOR'S QUALIFICATIONS

As the author of this report I, Craig Kennedy, certify that:

1. I am an independent prospector residing at 2290 Dewolfe Avenue, Kimberley, BC.
2. I have been actively prospecting in the East and West Kootenays district of BC for the past 32 years and have made my living prospecting for the past 23 years.
3. I have been employed as a professional prospector by major and junior mineral exploration companies.
4. I own and maintain mineral claims in BC and have optioned numerous claims to various exploration companies.

Craig Kennedy

Craig Kennedy
Prospector



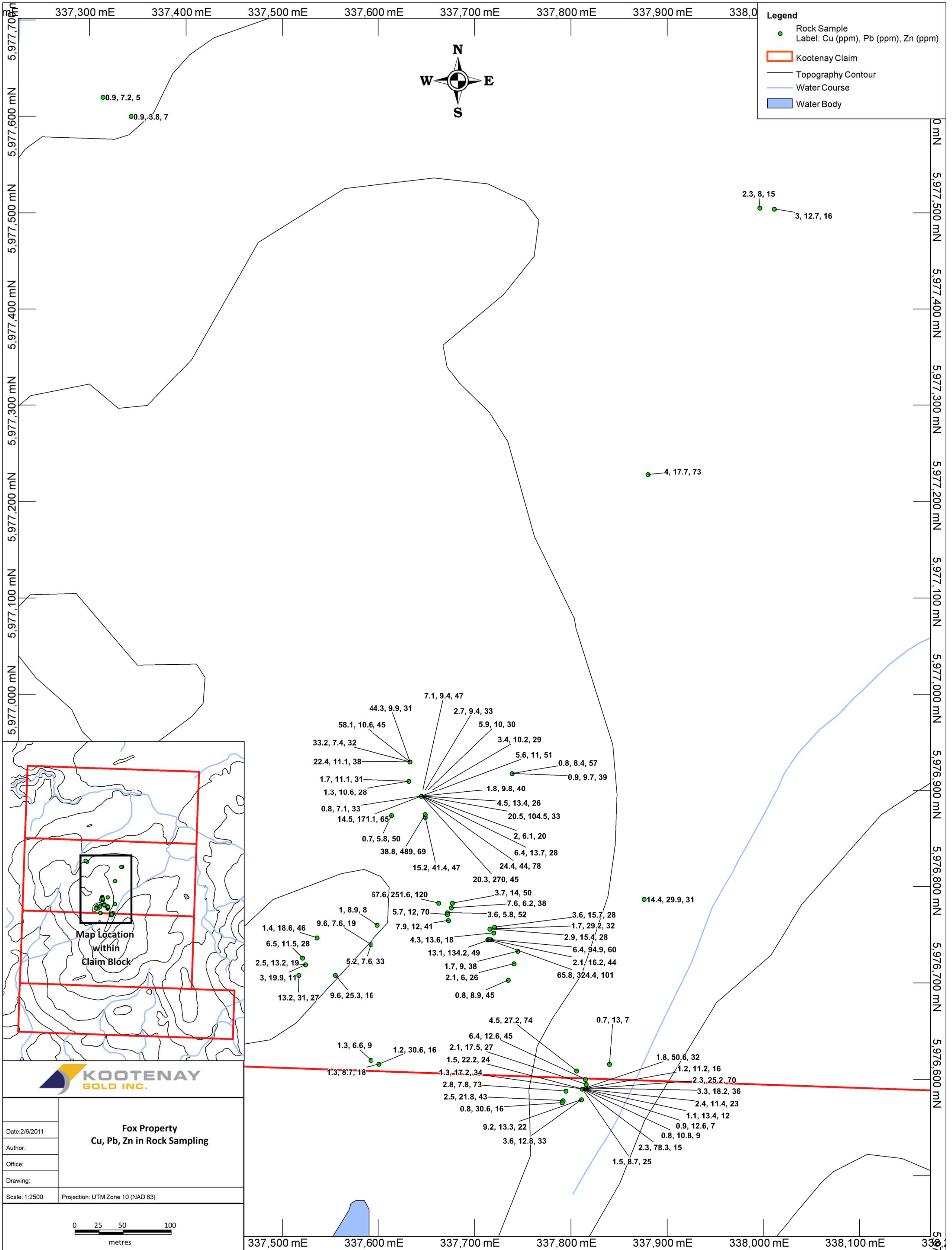
KOOTENAY GOLD INC.

Fox Property

Au, Ag in Rock Sampling

Date: 2/6/2011
 Author:
 Office:
 Drawing:
 Scale: 1:2500
 Projection: UTM Zone 10 (NAD 83)

0 25 50 100 metres

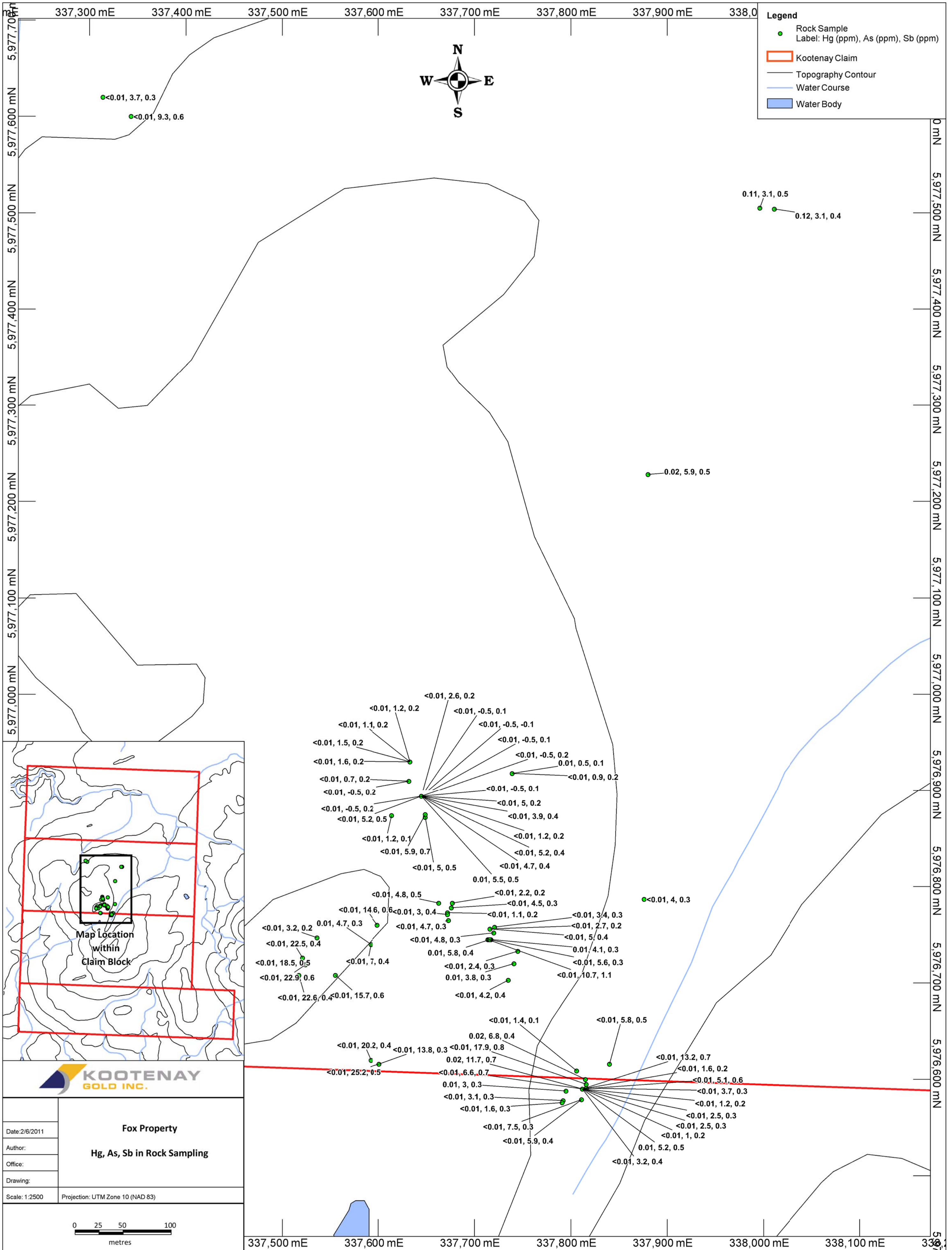


KOOTENAY GOLD INC.

**Fox Property
Cu, Pb, Zn in Rock Sampling**

Date: 2/6/2011
 Author:
 Office:
 Drawing:
 Scale: 1:2500
 Projection: UTM Zone 10 (NAD 83)

0 25 50 100 metres



KOOTENAY GOLD INC.

Fox Property

Hg, As, Sb in Rock Sampling

Date: 2/6/2011

Author:

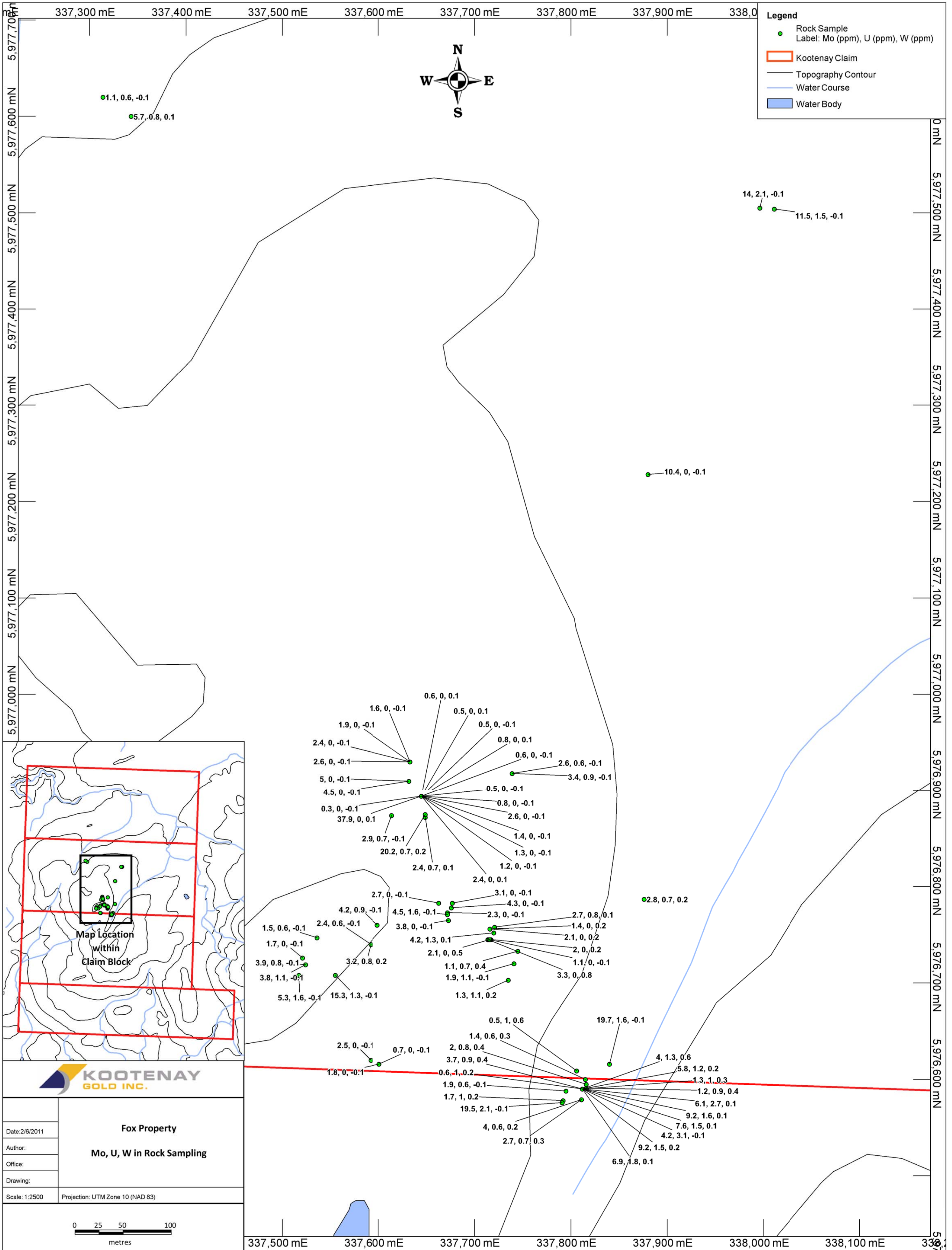
Office:

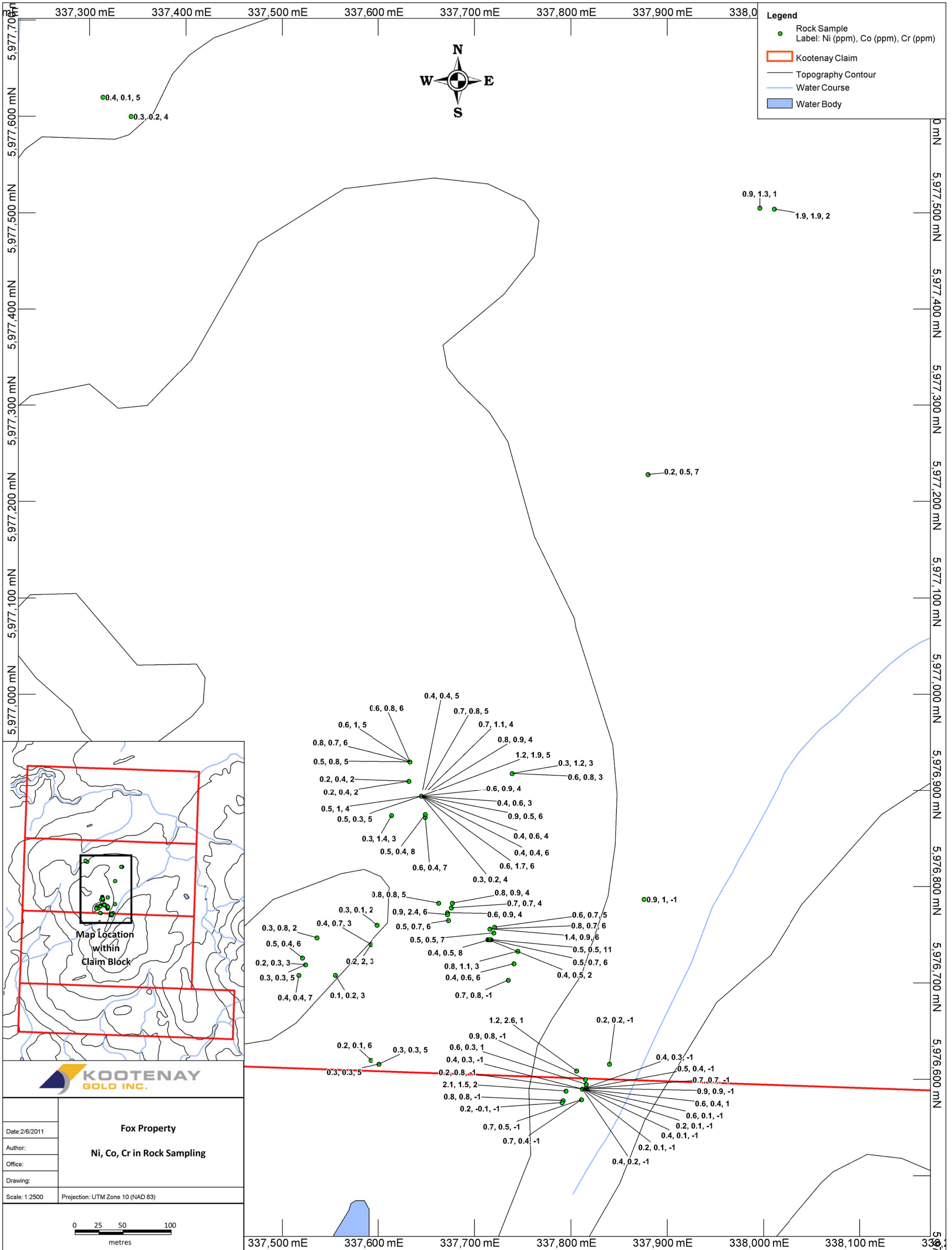
Drawing:

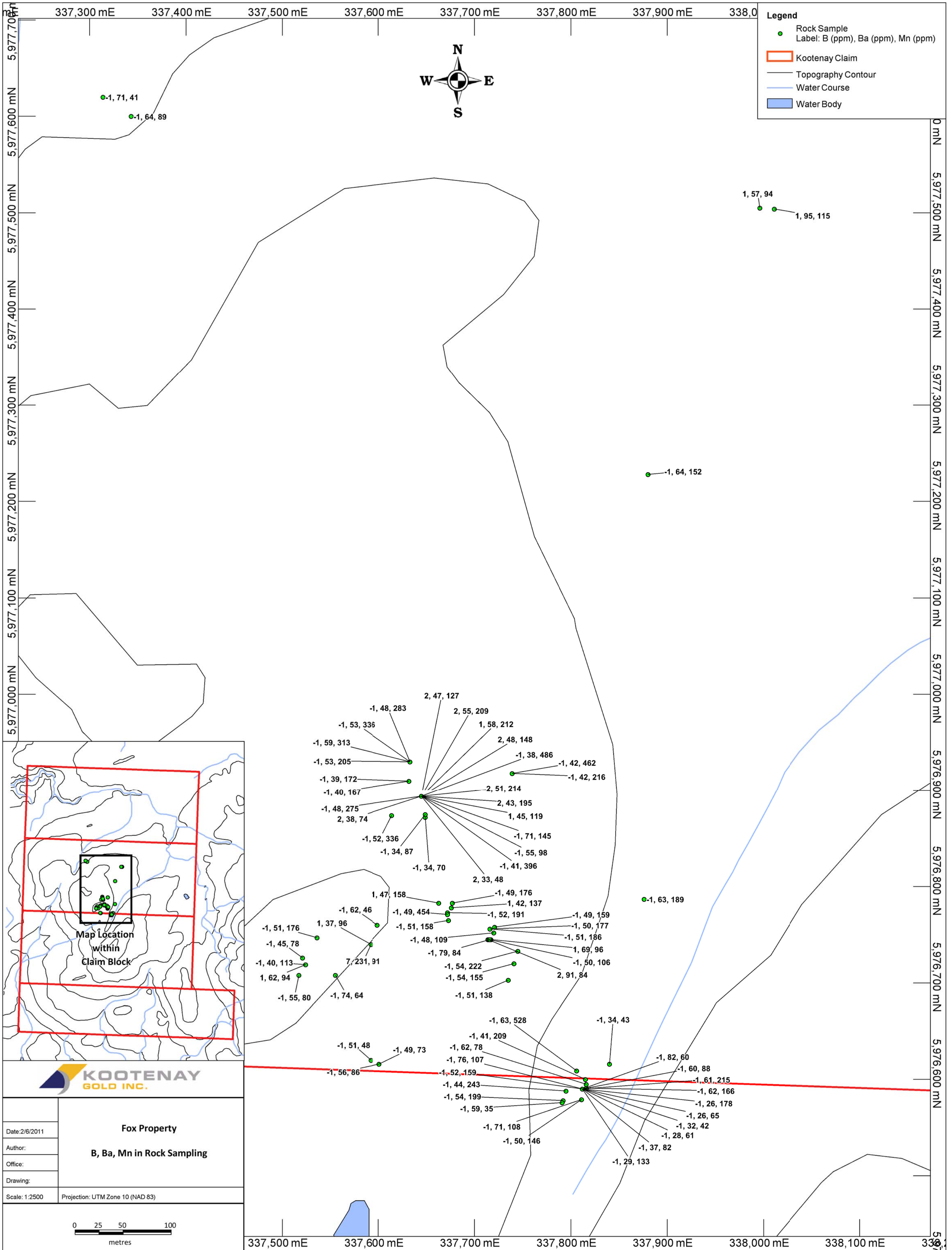
Scale: 1:2500

Projection: UTM Zone 10 (NAD 83)

0 25 50 100 metres







Appendix #1 - Rock Sample Descriptions

Sample No.	UTM E	UTM N	Property	Description
FC10-139	337314	5977620	Fox Lake	Rhyolite-silica flooded breccia with micro veinlets and vuggy fractures-red and rusty vugs
FC10-140	337996	5977505	Fox Lake	Well fractured rhyolite porphyry with rusty fractures minor micro veining and some hem staining
FC10-141	337739	5976918	Fox Lake	Well fractured rhyolite with veinlets and micro veinlets-rusty and red fractures with minor pyrite
FC10-142	337739	5976918	Fox Lake	Same as above
FC10-143	337649	5976872	Fox Lake	Rhyolite breccia with veinlets and rusty/red fractures
FC10-144	337649	5976875	Fox Lake	Same as above
FC10-145	337614	5976874	Fox Lake	Rhyolite breccia with rusty vugs
FC10-146	337721	5976758	Fox Lake	Rhyolite porphyry well fractured with strong N-S and E-W fractures at the edge of a 30 degree
FC10-147	337720	5976752	Fox Lake	Same as above except silica flooding and micro veinlets
FC10-148	337735	5976703	Fox Lake	Rhyolite porphyry with breccia and micro veining-rusty fractures and vugs
FC10-149	337741	5976720	Fox Lake	Same as above except more silica
FC10-150	337745	5976733	Fox Lake	Same as above
FC10-151	337672	5976771	Fox Lake	Same as above
FC10-271	337812	5976590	Fox Lake	Chlorite-micro veins and vuggy fractures-fresh disseminated pyrite-hem color and grey silica
FC10-272	337812	5976590	Fox Lake	Same as above
FC10-273	337812	5976590	Fox Lake	Same as above
FC10-274	337812	5976590	Fox Lake	Same as above
FC10-275	337812	5976590	Fox Lake	Chlorite-micro veins and vuggy fractures-fresh disseminated pyrite-hem color and grey silica
FC10-276	337812	5976590	Fox Lake	Same as above
FC10-277	337812	5976590	Fox Lake	Same as above
FC10-278	337812	5976590	Fox Lake	Same as above
FC10-279	337812	5976590	Fox Lake	Same as above

Sample No.	UTM E	UTM N	Property	Description
FC10-280	337812	5976590	Fox Lake	Chlorite-micro veins and vuggy fractures-fresh disseminated pyrite-hem color and grey silica
FC10-281	337812	5976590	Fox Lake	Same as above
FC10-282	337840	5976616	Fox Lake	Same as above
CK10 - 1072	337343	5977600	Fox	Breccia? Intrusive breccia feldspar porphyry? Micro veins - some lim stain - some yellow stain
CK10 - 1073	338011	5977504	Fox	Narrow 2cm zone in porph green lots of fine fr with py
CK10 - 1074	337599	5976760	Fox	Jar on fr - some micro veins some red hem color breccia - porph some lim stain
CK10 - 1075	337592	5976740	Fox	Qtz veins flourite weak fe vuggy
CK10 - 1076	337592	5976740	Fox	More flourite white vugged rock
CK10 - 1077	337536	5976747	Fox	Bleached narrow quartz vein and lim stain
CK10 - 1078	337555	5976708	Fox	Subcrop vugs - silica veins - hem and lim and jar
CK10 - 1079	337524	5976719	Fox	Yellow stain weak hem and lim color - some small vugs and micro veins across 8m composite
CK10 - 1080	337524	5976719	Fox	Hi grade better qrtz vein material - lim hem stain - fresh py
CK10 - 1081	337517	5976708	Fox	Weaker looking micro vein and lim and jar and hem stain - composite 4m
CK10 - 1107	337633	5976930	Fox	Silicified chlorite with multi micro veins - some have vugs with qrtz crystals - fresh py rare cupy - feldspars and blebs of chl
CK10 - 1108	337633	5976930	Fox	Same as above but live hem
CK10 - 1109	337633	5976930	Fox	Same as above but more fr
CK10 - 1110	337633	5976930	Fox	Same as above but live hem
CK10 - 1111	337632	5976910	Fox	Similar to above - lots of micro fr - feldspares - silicified
CK10 - 1112	337632	5976910	Fox	Same as above
CK10 - 1113	337645	5976894	Fox	Breccia zone not as many micro veins - bigger broked vein pieces - hem vugs and lim and py
CK10 - 1114	337645	5976894	Fox	Same as above
CK10 - 1115	337645	5976894	Fox	Same as above
CK10 - 1116	337645	5976894	Fox	Same as above
CK10 - 1117	337645	5976894	Fox	Same as above

Sample No.	UTM E	UTM N	Property	Description
CK10 - 1118	337645	5976894	Fox	Same as above
CK10 - 1119	337645	5976894	Fox	Same as above
CK10 - 1120	337645	5976894	Fox	Same as above
CK10 - 1121	337645	5976894	Fox	Same as above
CK10 - 1122	337645	5976894	Fox	Same as above
CK10 - 1123	337645	5976894	Fox	Same as above
CK10 - 1124	337645	5976894	Fox	Same as above
CK10 - 1125	337645	5976894	Fox	Same as above
CK10 - 1126	337645	5976894	Fox	Same as above
CK10 - 1127	337714	5976745	Fox	Clay alt and veined lim - qrtz crystals
CK10 - 1128	337715	5976745	Fox	Hem in vugs - breccia - micro veins and lim
CK10 - 1129	337717	5976745	Fox	Breccia silicified fine and diss py micro
CK10 - 1130	337716	5976745	Fox	Same as above - very silicious
CK10 - 1131	337716	5976756	Fox	Hem colored - micro veined silica flooded lim fr (rare cupy)
CK10 - 1132	337716	5976756	Fox	Same as above
CK10 - 1133	337677	5976783	Fox	Weak silicified breccia - hem and lim
CK10 - 1134	337676	5976778	Fox	Same as above
CK10 - 1135	337672	5976773	Fox	Same as above
CK10 - 1136	337673	5976765	Fox	Same as above
CK10 - 1137	337667	5996779	Fox	Same as above
CK10 - 1138	337663	5976783	Fox	Same as above
CK10 - 1139	337601	5976616	Fox	Better micro veins and fractures with hem thin outcrops
CK10 - 1140	337601	5976616	Fox	Same as above
CK10 - 1141	337592	5976620	Fox	Micro veins fr hem and lim. Same as above

Appendix #2 - Assay Analysis



1020 Cordova St. East Vancouver BC V6A 4A3 Canada
Phone (604) 253-3158 Fax (604) 253-1716

Acme Analytical Laboratories (Vancouver) Ltd.

www.acmelab.com

Client: **Kootenay Gold Inc.**
Suite 920 - 1055 W. Hastings St.
Vancouver BC V6E 2E9 Canada

Submitted By: Email Distribution List
Receiving Lab: Canada-Vancouver
Received: June 24, 2010
Report Date: July 08, 2010
Page: 1 of 2

CERTIFICATE OF ANALYSIS

VAN10002920.1

CLIENT JOB INFORMATION

Project: FOX
Shipment ID:
P.O. Number
Number of Samples: 23

SAMPLE DISPOSAL

DISP-PLP Dispose of Pulp After 90 days
DISP-RJT Dispose of Reject After 90 days

Acme does not accept responsibility for samples left at the laboratory after 90 days without prior written instructions for sample storage or return.

Invoice To: Kootenay Gold Inc.
Suite 920 - 1055 W. Hastings St.
Vancouver BC V6E 2E9
Canada

CC:

SAMPLE PREPARATION AND ANALYTICAL PROCEDURES

Method Code	Number of Samples	Code Description	Test Wgt (g)	Report Status	Lab
R200-250	23	Crush, split and pulverize 250 g rock to 200 mesh			VAN
1DX3	23	1:1:1 Aqua Regia digestion ICP-MS analysis	30	Completed	VAN
G6Gr	1	Lead collection fire assay 30G fusion - Grav finish	30	Completed	VAN

ADDITIONAL COMMENTS



This report supersedes all previous preliminary and final reports with this file number dated prior to the date on this certificate. Signature indicates final approval; preliminary reports are unsigned and should be used for reference only. All results are considered the confidential property of the client. Acme assumes the liabilities for actual cost of analysis only. ** asterisk indicates that an analytical result could not be provided due to unusually high levels of interference from other elements.



Acme Analytical Laboratories (Vancouver) Ltd.
 1020 Cordova St. East Vancouver BC V6A 4A3 Canada
 Phone (604) 253-3158 Fax (604) 253-1716

www.acmelab.com

Client: **Kootenay Gold Inc.**
 Suite 920 - 1055 W. Hastings St.
 Vancouver BC V6E 2E9 Canada

Project: FOX
 Report Date: July 08, 2010

Page: 2 of 2 Part 1

CERTIFICATE OF ANALYSIS

VAN10002920.1

Method Analyte Unit MDL	WGHT	1DX30	1DX30	1DX30	1DX30	1DX30	1DX30	1DX30	1DX30	1DX30	1DX30	1DX30	1DX30	1DX30	1DX30	1DX30	1DX30	1DX30	1DX30	1DX30	
	Wgt	Mo	Cu	Pb	Zn	Ag	Ni	Co	Mn	Fe	As	U	Au	Th	Sr	Cd	Sb	Bi	V	Ca	
	kg	ppm	ppm	ppm	ppm	ppm	ppm	ppm	ppm	%	ppm	ppm	ppb	ppm	ppm	ppm	ppm	ppm	ppm	%	
	0.01	0.1	0.1	0.1	1	0.1	0.1	0.1	1	0.01	0.5	0.1	0.5	0.1	1	0.1	0.1	0.1	2	0.01	
CK10-1072	Rock	0.62	5.7	0.9	3.8	7	0.3	0.3	0.2	89	0.89	9.3	0.8	4.1	5.4	17	<0.1	0.6	<0.1	5	0.03
CK10-1073	Rock	0.50	11.5	3.0	12.7	16	0.9	1.9	1.9	115	1.36	3.1	1.5	4.2	4.1	16	<0.1	0.4	<0.1	5	0.03
CK10-1074	Rock	0.53	4.2	1.0	8.9	8	0.3	0.3	0.1	46	0.61	14.6	0.9	1.7	4.0	12	<0.1	0.6	<0.1	3	0.03
CK10-1075	Rock	0.58	2.4	9.6	7.6	19	<0.1	0.4	0.7	96	0.60	4.7	0.6	1.5	2.6	2	<0.1	0.3	<0.1	9	0.26
CK10-1076	Rock	0.55	3.2	5.2	7.6	33	<0.1	0.2	2.0	91	0.90	7.0	0.8	3.0	3.0	15	<0.1	0.4	<0.1	23	5.32
CK10-1077	Rock	0.51	1.5	1.4	18.6	46	0.1	0.3	0.8	176	1.32	3.2	0.6	<0.5	3.8	6	<0.1	0.2	<0.1	7	0.08
CK10-1078	Rock	0.69	15.3	9.6	25.3	16	1.6	0.1	0.2	64	1.38	15.7	1.3	51.8	5.3	19	<0.1	0.6	<0.1	4	0.02
CK10-1079	Rock	0.52	3.8	3.0	19.9	11	2.7	0.3	0.3	94	1.08	22.9	1.1	12.3	2.8	8	<0.1	0.6	<0.1	3	0.02
CK10-1080	Rock	0.64	3.9	2.5	13.2	19	0.8	0.2	0.3	113	1.40	18.5	0.8	3.7	4.6	5	<0.1	0.5	<0.1	9	0.03
CK10-1081	Rock	0.83	5.3	13.2	31.0	27	14.1	0.4	0.4	80	1.30	22.6	1.6	85.1	2.4	4	<0.1	0.4	<0.1	4	0.02
FC 139	Rock	0.73	1.1	0.9	7.2	5	0.4	0.4	0.1	41	1.05	3.7	0.6	6.5	3.1	35	<0.1	0.3	<0.1	5	0.02
FC 140	Rock	0.62	14.0	2.3	8.0	15	0.2	0.9	1.3	94	1.42	3.1	2.1	1.9	4.8	9	<0.1	0.5	<0.1	6	0.04
FC 141	Rock	0.44	3.4	0.9	9.7	39	<0.1	0.6	0.8	216	1.04	0.9	0.9	0.7	3.2	5	<0.1	0.2	<0.1	6	0.07
FC 142	Rock	0.49	2.6	0.8	8.4	57	<0.1	0.3	1.2	462	1.28	0.5	0.6	<0.5	3.1	5	0.1	0.1	<0.1	7	0.05
FC 143	Rock	0.41	2.4	15.2	41.4	47	29.7	0.6	0.4	70	1.02	5.0	0.7	117.2	2.5	4	<0.1	0.5	<0.1	6	0.02
FC 144	Rock	0.47	20.2	38.8	489.0	69	>100	0.5	0.4	87	1.06	5.9	0.7	831.2	3.1	5	<0.1	0.7	<0.1	7	0.03
FC 145	Rock	0.50	2.9	0.7	5.8	50	0.3	0.3	1.4	336	1.24	1.2	0.7	1.8	2.9	4	<0.1	0.1	<0.1	7	0.06
FC 146	Rock	0.63	2.7	3.6	15.7	28	0.7	0.6	0.7	159	1.27	3.4	0.8	136.7	3.5	5	<0.1	0.3	<0.1	13	0.05
FC 147	Rock	0.60	4.2	4.3	13.6	18	0.7	0.5	0.5	109	1.13	4.8	1.3	9.1	4.0	6	<0.1	0.3	<0.1	9	0.06
FC 148	Rock	0.69	1.3	0.8	8.9	45	0.2	0.7	0.8	138	1.17	4.2	1.1	3.9	5.4	6	<0.1	0.4	<0.1	10	0.07
FC 149	Rock	0.42	1.9	2.1	6.0	26	0.2	0.4	0.6	155	1.25	3.8	1.1	3.2	5.5	7	<0.1	0.3	<0.1	12	0.07
FC 150	Rock	0.43	1.1	1.7	9.0	38	<0.1	0.8	1.1	222	1.34	2.4	0.7	3.3	5.0	6	<0.1	0.3	<0.1	12	0.11
FC 151	Rock	0.61	4.5	5.7	12.0	70	0.4	0.9	2.4	454	1.75	3.0	1.6	3.3	5.5	7	0.2	0.4	<0.1	11	0.06



Acme Analytical Laboratories (Vancouver) Ltd.
 1020 Cordova St. East Vancouver BC V6A 4A3 Canada
 Phone (604) 253-3158 Fax (604) 253-1716

www.acmelab.com

Client: **Kootenay Gold Inc.**
 Suite 920 - 1055 W. Hastings St.
 Vancouver BC V6E 2E9 Canada

Project: FOX
 Report Date: July 08, 2010

Page: 2 of 2 Part 2

CERTIFICATE OF ANALYSIS

VAN10002920.1

Method	1DX30	1DX30	1DX30	1DX30	1DX30	1DX30	1DX30	1DX30	1DX30	1DX30	1DX30	1DX30	1DX30	1DX30	1DX30	1DX30	1DX30	1DX30	1DX30	G6Gr
Analyte	P	La	Cr	Mg	Ba	Ti	B	Al	Na	K	W	Hg	Sc	Tl	S	Ga	Se	Te	Ag	
Unit	%	ppm	ppm	%	ppm	%	ppm	%	%	%	ppm	ppm	ppm	ppm	%	ppm	ppm	ppm	gm/mt	
MDL	0.001	1	1	0.01	1	0.001	1	0.01	0.001	0.01	0.01	0.01	0.1	0.1	0.05	1	0.5	0.2	50	
CK10-1072	Rock	0.030	40	4	0.03	64	0.002	<1	0.23	0.005	0.26	0.1	<0.01	0.4	0.2	0.13	2	<0.5	<0.2	
CK10-1073	Rock	0.028	48	2	0.05	95	0.003	1	0.55	0.032	0.23	<0.1	0.12	0.9	0.2	0.61	4	<0.5	<0.2	
CK10-1074	Rock	0.032	22	2	<0.01	62	0.001	<1	0.28	0.010	0.32	<0.1	<0.01	0.3	0.1	0.08	1	<0.5	<0.2	
CK10-1075	Rock	0.009	12	3	0.03	37	0.002	1	0.92	0.002	0.53	<0.1	0.01	0.8	0.2	<0.05	4	<0.5	<0.2	
CK10-1076	Rock	0.019	22	3	0.12	231	0.015	7	3.88	0.006	2.13	0.2	<0.01	2.9	1.0	<0.05	14	<0.5	<0.2	
CK10-1077	Rock	0.047	10	2	0.07	51	0.004	<1	0.62	0.032	0.24	<0.1	<0.01	0.6	0.2	<0.05	5	<0.5	<0.2	
CK10-1078	Rock	0.049	32	3	<0.01	74	0.002	<1	0.25	0.016	0.26	<0.1	<0.01	0.5	0.1	0.13	1	<0.5	<0.2	
CK10-1079	Rock	0.029	17	5	0.01	62	0.006	1	0.33	0.030	0.29	<0.1	<0.01	0.5	0.2	0.14	2	<0.5	<0.2	
CK10-1080	Rock	0.034	12	3	0.05	40	0.003	<1	0.42	0.025	0.19	<0.1	<0.01	0.5	0.1	<0.05	4	<0.5	<0.2	
CK10-1081	Rock	0.031	38	7	0.02	55	0.005	<1	0.33	0.020	0.26	<0.1	<0.01	0.5	0.2	<0.05	2	<0.5	<0.2	
FC 139	Rock	0.030	44	5	<0.01	71	0.002	<1	0.19	0.042	0.24	<0.1	<0.01	0.4	0.1	0.19	2	<0.5	<0.2	
FC 140	Rock	0.028	23	1	0.06	57	0.005	1	0.50	0.038	0.21	<0.1	0.11	1.1	<0.1	<0.05	4	<0.5	<0.2	
FC 141	Rock	0.039	13	3	0.07	42	0.004	<1	0.55	0.032	0.26	<0.1	<0.01	0.5	0.1	<0.05	4	<0.5	<0.2	
FC 142	Rock	0.034	14	3	0.09	42	0.003	<1	0.63	0.026	0.25	<0.1	0.01	0.9	0.1	<0.05	4	<0.5	<0.2	
FC 143	Rock	0.022	9	7	0.02	34	0.003	<1	0.25	0.015	0.14	0.1	<0.01	0.3	<0.1	<0.05	1	<0.5	<0.2	
FC 144	Rock	0.033	9	8	0.02	34	0.005	<1	0.30	0.017	0.21	0.2	<0.01	0.3	0.1	<0.05	2	0.8	<0.2	131
FC 145	Rock	0.038	17	3	0.07	52	0.002	<1	0.68	0.015	0.25	<0.1	<0.01	0.7	0.1	<0.05	3	<0.5	<0.2	
FC 146	Rock	0.053	38	5	0.07	49	0.018	<1	0.58	0.039	0.17	0.1	<0.01	0.9	<0.1	<0.05	5	<0.5	<0.2	
FC 147	Rock	0.049	25	7	0.05	48	0.020	<1	0.35	0.033	0.14	0.1	<0.01	0.8	<0.1	0.14	3	<0.5	<0.2	
FC 148	Rock	0.041	31	<1	0.04	51	0.026	<1	0.61	0.041	0.25	0.2	<0.01	0.7	0.2	<0.05	5	<0.5	<0.2	
FC 149	Rock	0.046	41	6	0.06	54	0.010	<1	0.53	0.039	0.21	<0.1	0.01	0.9	<0.1	<0.05	4	<0.5	<0.2	
FC 150	Rock	0.038	30	3	0.06	54	0.056	<1	0.56	0.034	0.28	0.4	<0.01	1.0	<0.1	<0.05	4	<0.5	<0.2	
FC 151	Rock	0.043	44	6	0.07	49	0.006	<1	0.67	0.039	0.20	<0.1	<0.01	1.5	<0.1	<0.05	5	<0.5	<0.2	



Acme Analytical Laboratories (Vancouver) Ltd.

1020 Cordova St. East Vancouver BC V6A 4A3 Canada

Phone (604) 253-3158 Fax (604) 253-1716

www.acmelab.com

Client: Kootenay Gold Inc.
Suite 920 - 1055 W. Hastings St.
Vancouver BC V6E 2E9 Canada

Project: FOX

Report Date: July 08, 2010

Page: 1 of 1 **Part** 1

QUALITY CONTROL REPORT

VAN10002920.1

Method	WGHT	1DX30	1DX30	1DX30	1DX30	1DX30	1DX30	1DX30	1DX30	1DX30	1DX30	1DX30	1DX30	1DX30	1DX30	1DX30	1DX30	1DX30	1DX30	1DX30	
Analyte	Wgt	Mo	Cu	Pb	Zn	Ag	Ni	Co	Mn	Fe	As	U	Au	Th	Sr	Cd	Sb	Bi	V	Ca	
Unit	kg	ppm	ppm	ppm	ppm	ppm	ppm	ppm	ppm	%	ppm	ppm	ppb	ppm	ppm	ppm	ppm	ppm	ppm	%	
MDL	0.01	0.1	0.1	0.1	1	0.1	0.1	0.1	1	0.01	0.5	0.1	0.5	0.1	1	0.1	0.1	0.1	2	0.01	
Reference Materials																					
STD CDN-ME-3	Standard																				
STD DS7	Standard	21.0	114.5	74.0	377	1.0	60.8	10.9	717	2.47	49.8	6.0	67.7	4.8	84	6.0	6.6	4.6	87	1.01	
STD DS7	Standard	21.4	111.3	69.2	376	0.9	64.2	10.7	717	2.43	49.8	5.1	65.0	5.4	90	6.5	6.1	4.5	86	0.99	
STD DS7 Expected		20.5	109	70.6	411	0.9	56	9.7	627	2.39	48.2	4.9	70	4.4	69	6.4	4.6	4.5	84	0.93	
STD CDN-ME-3 Expected																					
BLK	Blank	<0.1	<0.1	<0.1	<1	<0.1	<0.1	<0.1	<1	<0.01	<0.5	<0.1	<0.5	<0.1	<1	<0.1	<0.1	<0.1	<2	<0.01	
BLK	Blank																				
Prep Wash																					
G1	Prep Blank	<0.01	0.1	3.0	3.9	48	<0.1	1.4	4.1	612	2.05	<0.5	2.3	<0.5	6.3	75	<0.1	<0.1	<0.1	39	0.62
G1	Prep Blank	<0.01	0.1	3.0	3.8	47	<0.1	1.5	4.6	617	2.13	<0.5	1.8	<0.5	7.9	75	<0.1	<0.1	<0.1	42	0.57



Acme Analytical Laboratories (Vancouver) Ltd.

1020 Cordova St. East Vancouver BC V6A 4A3 Canada

Phone (604) 253-3158 Fax (604) 253-1716

www.acmelab.com

Client: Kootenay Gold Inc.
Suite 920 - 1055 W. Hastings St.
Vancouver BC V6E 2E9 Canada

Project: FOX

Report Date: July 08, 2010

Page: 1 of 1 Part 2

QUALITY CONTROL REPORT

VAN10002920.1

Method	1DX30	1DX30	1DX30	1DX30	1DX30	1DX30	1DX30	1DX30	1DX30	1DX30	1DX30	1DX30	1DX30	1DX30	1DX30	1DX30	1DX30	1DX30	1DX30	G6Gr
Analyte	P	La	Cr	Mg	Ba	Ti	B	Al	Na	K	W	Hg	Sc	Tl	S	Ga	Se	Te	Ag	
Unit	%	ppm	ppm	%	ppm	%	ppm	%	%	%	ppm	ppm	ppm	ppm	%	ppm	ppm	ppm	gm/mt	
MDL	0.001	1	1	0.01	1	0.001	1	0.01	0.001	0.01	0.1	0.01	0.1	0.1	0.05	1	0.5	0.2	50	
Reference Materials																				
STD CDN-ME-3	Standard																			247
STD DS7	Standard	0.075	13	194	1.08	351	0.141	45	1.07	0.101	0.39	3.8	0.22	2.3	4.5	0.21	5	3.2	0.8	
STD DS7	Standard	0.066	12	167	1.06	401	0.135	35	1.04	0.098	0.46	3.7	0.21	2.8	3.1	0.21	4	3.5	0.9	
STD DS7 Expected		0.08	12	179	1.05	410	0.124	39	0.959	0.089	0.44	3.4	0.2	2.5	4.2	0.19	5	3.5	1.08	
STD CDN-ME-3 Expected																				276
BLK	Blank	<0.001	<1	<1	<0.01	<1	<0.001	<1	<0.01	<0.001	<0.01	<0.1	<0.01	<0.1	<0.1	<0.05	<1	<0.5	<0.2	
BLK	Blank																			<50
Prep Wash																				
G1	Prep Blank	0.071	17	7	0.47	109	0.152	1	0.94	0.137	0.47	<0.1	<0.01	2.1	0.3	<0.05	5	<0.5	<0.2	
G1	Prep Blank	0.077	19	10	0.50	115	0.146	2	0.90	0.113	0.46	<0.1	<0.01	1.8	0.3	<0.05	5	<0.5	<0.2	



1020 Cordova St. East Vancouver BC V6A 4A3 Canada

Acme Analytical Laboratories (Vancouver) Ltd.

www.acmelab.com

Client: **Kootenay Gold Inc.**
Suite 920 - 1055 W. Hastings St.
Vancouver BC V6E 2E9 Canada

Submitted By: Email Distribution List
Receiving Lab: Canada-Vancouver
Received: July 29, 2010
Report Date: August 18, 2010
Page: 1 of 3

CERTIFICATE OF ANALYSIS

VAN10003606.1

CLIENT JOB INFORMATION

Project: FOX
Shipment ID:
P.O. Number
Number of Samples: 37

SAMPLE DISPOSAL

DISP-PLP Dispose of Pulp After 90 days
DISP-RJT Dispose of Reject After 90 days

Acme does not accept responsibility for samples left at the laboratory after 90 days without prior written instructions for sample storage or return.

Invoice To: Kootenay Gold Inc.
Suite 920 - 1055 W. Hastings St.
Vancouver BC V6E 2E9
Canada

CC:

SAMPLE PREPARATION AND ANALYTICAL PROCEDURES

Method Code	Number of Samples	Code Description	Test Wgt (g)	Report Status	Lab
R200-250	37	Crush, split and pulverize 250 g rock to 200 mesh			VAN
1DX3	37	1:1:1 Aqua Regia digestion ICP-MS analysis	30	Completed	VAN
G6Gr	3	Lead collection fire assay 30G fusion - Grav finish	30	Completed	VAN

ADDITIONAL COMMENTS



This report supersedes all previous preliminary and final reports with this file number dated prior to the date on this certificate. Signature indicates final approval; preliminary reports are unsigned and should be used for reference only. All results are considered the confidential property of the client. Acme assumes the liabilities for actual cost of analysis only. ** asterisk indicates that an analytical result could not be provided due to unusually high levels of interference from other elements.



Acme Analytical Laboratories (Vancouver) Ltd.
 1020 Cordova St. East Vancouver BC V6A 4A3 Canada
 Phone (604) 253-3158 Fax (604) 253-1716

www.acmelab.com

Client: **Kootenay Gold Inc.**
 Suite 920 - 1055 W. Hastings St.
 Vancouver BC V6E 2E9 Canada

Project: FOX
 Report Date: August 18, 2010

Page: 2 of 3 Part 1

CERTIFICATE OF ANALYSIS

VAN10003606.1

Method	WGHT	1DX30	1DX30	1DX30	1DX30	1DX30	1DX30	1DX30	1DX30	1DX30	1DX30	1DX30	1DX30	1DX30	1DX30	1DX30	1DX30	1DX30	1DX30	1DX30	1DX30
Analyte	Wgt	Mo	Cu	Pb	Zn	Ag	Ni	Co	Mn	Fe	As	Au	Th	Sr	Cd	Sb	Bi	V	Ca	P	
Unit	kg	ppm	ppm	ppm	ppm	ppm	ppm	ppm	ppm	%	ppm	ppb	ppm	ppm	ppm	ppm	ppm	ppm	%	%	
MDL	0.01	0.1	0.1	0.1	1	0.1	0.1	0.1	1	0.01	0.5	0.5	0.1	1	0.1	0.1	0.1	2	0.01	0.001	
CK10-1107	Rock	0.63	2.6	22.4	11.1	38	0.5	0.5	0.8	205	1.34	1.6	4.7	4.5	6	<0.1	0.2	<0.1	6	0.08	0.042
CK10-1108	Rock	0.57	2.4	33.2	7.4	32	0.6	0.8	0.7	313	1.56	1.5	2.4	4.8	6	<0.1	0.2	<0.1	7	0.05	0.034
CK10-1109	Rock	0.71	1.6	44.3	9.9	31	1.3	0.6	0.8	283	1.42	1.2	8.9	5.0	5	<0.1	0.2	<0.1	6	0.06	0.033
CK10-1110	Rock	0.50	1.9	58.1	10.6	45	1.4	0.6	1.0	336	1.59	1.1	5.8	5.4	5	<0.1	0.2	<0.1	6	0.07	0.041
CK10-1111	Rock	0.57	5.0	1.7	11.1	31	0.1	0.2	0.4	172	0.90	0.7	3.1	4.4	3	<0.1	0.2	<0.1	4	0.05	0.032
CK10-1112	Rock	0.53	4.5	1.3	10.6	28	0.2	0.2	0.4	167	0.88	<0.5	1.7	4.7	3	<0.1	0.2	<0.1	4	0.06	0.033
CK10-1113	Rock	0.46	0.6	5.6	11.0	51	0.6	1.2	1.9	486	1.35	<0.5	7.2	2.5	5	<0.1	0.2	<0.1	9	0.11	0.052
CK10-1114	Rock	0.50	0.8	3.4	10.2	29	0.4	0.8	0.9	148	0.98	<0.5	8.5	2.2	4	<0.1	0.1	<0.1	6	0.07	0.042
CK10-1115	Rock	0.56	0.5	5.9	10.0	30	0.5	0.7	1.1	212	0.86	<0.5	4.2	2.9	6	0.1	<0.1	<0.1	6	0.10	0.048
CK10-1116	Rock	0.73	0.5	2.7	9.4	33	0.2	0.7	0.8	209	0.83	<0.5	1.3	2.7	5	<0.1	0.1	<0.1	5	0.09	0.048
CK10-1117	Rock	0.69	0.6	7.1	9.4	47	4.4	0.4	0.4	127	1.35	2.6	34.4	4.4	6	<0.1	0.2	<0.1	8	0.03	0.036
CK10-1118	Rock	0.37	37.9	14.5	171.1	65	>100	0.5	0.3	74	1.14	5.2	1140	2.9	4	<0.1	0.5	<0.1	7	0.02	0.027
CK10-1119	Rock	0.49	2.4	20.3	270.0	45	>100	0.3	0.2	48	0.98	5.5	1082	2.5	7	<0.1	0.5	<0.1	6	0.01	0.026
CK10-1120	Rock	0.69	1.2	24.4	44.0	78	2.9	0.6	1.7	396	0.96	4.7	17.4	3.4	4	0.1	0.4	<0.1	7	0.20	0.033
CK10-1121	Rock	0.45	1.3	6.4	13.7	28	0.6	0.4	0.4	98	1.06	5.2	4.8	3.3	4	<0.1	0.4	<0.1	6	0.04	0.032
CK10-1122	Rock	0.51	1.4	2.0	6.1	20	0.3	0.4	0.6	145	0.94	1.2	3.5	3.3	4	<0.1	0.2	<0.1	7	0.09	0.040
CK10-1123	Rock	0.59	2.6	20.5	104.5	33	44.9	0.9	0.5	119	0.91	3.9	114.0	2.6	4	<0.1	0.4	<0.1	6	0.06	0.039
CK10-1124	Rock	0.66	0.8	4.5	13.4	26	0.6	0.4	0.6	195	1.17	5.0	4.1	3.3	4	<0.1	0.2	<0.1	8	0.05	0.034
CK10-1125	Rock	0.55	0.5	1.8	9.8	40	0.2	0.6	0.9	214	1.14	<0.5	2.0	3.0	4	<0.1	0.1	<0.1	8	0.08	0.045
CK10-1126	Rock	0.67	0.3	0.8	7.1	33	<0.1	0.5	1.0	275	0.96	<0.5	13.3	2.6	4	<0.1	0.2	<0.1	9	0.11	0.038
CK10-1127	Rock	0.56	3.3	65.8	324.4	101	37.7	0.4	0.5	84	1.98	10.7	204.2	4.2	90	0.2	1.1	<0.1	11	0.02	0.066
CK10-1128	Rock	0.63	1.1	2.1	16.2	44	0.3	0.5	0.7	106	1.21	5.6	24.0	2.8	5	<0.1	0.3	<0.1	10	0.06	0.047
CK10-1129	Rock	0.76	2.0	6.4	94.9	60	1.8	0.5	0.5	96	1.20	4.1	225.6	2.5	8	1.0	0.3	<0.1	8	0.05	0.039
CK10-1130	Rock	0.65	2.1	13.1	134.2	49	4.3	0.4	0.5	84	1.38	5.8	283.5	3.2	9	0.4	0.4	<0.1	8	0.06	0.047
CK10-1131	Rock	0.45	1.4	1.7	29.2	32	0.4	0.8	0.7	177	1.48	2.7	15.1	2.7	5	<0.1	0.2	<0.1	16	0.08	0.063
CK10-1132	Rock	0.45	2.1	2.9	15.4	28	0.5	1.4	0.9	186	1.57	5.0	198.8	3.0	6	<0.1	0.4	<0.1	17	0.08	0.077
CK10-1133	Rock	0.53	3.1	3.7	14.0	50	0.2	0.8	0.9	176	1.16	2.2	14.1	4.6	5	<0.1	0.2	<0.1	9	0.07	0.053
CK10-1134	Rock	0.74	4.3	7.6	6.2	38	0.3	0.7	0.7	137	1.25	4.5	4.7	4.2	5	<0.1	0.3	<0.1	8	0.04	0.049
CK10-1135	Rock	0.57	2.3	3.6	5.8	52	0.2	0.6	0.9	191	1.34	1.1	1.3	5.9	5	<0.1	0.2	<0.1	9	0.07	0.047
CK10-1136	Rock	0.76	3.8	7.9	12.0	41	0.4	0.5	0.7	158	1.22	4.7	2.7	5.0	5	0.1	0.3	<0.1	8	0.05	0.046

This report supersedes all previous preliminary and final reports with this file number dated prior to the date on this certificate. Signature indicates final approval; preliminary reports are unsigned and should be used for reference only.



Acme Analytical Laboratories (Vancouver) Ltd.
 1020 Cordova St. East Vancouver BC V6A 4A3 Canada
 Phone (604) 253-3158 Fax (604) 253-1716

www.acmelab.com

Client: **Kootenay Gold Inc.**
 Suite 920 - 1055 W. Hastings St.
 Vancouver BC V6E 2E9 Canada

Project: FOX
 Report Date: August 18, 2010

Page: 2 of 3 Part 2

CERTIFICATE OF ANALYSIS

VAN10003606.1

Method	Analyte	1DX30	1DX30	1DX30	1DX30	1DX30	1DX30	1DX30	1DX30	1DX30	1DX30	1DX30	1DX30	1DX30	1DX30	1DX30	1DX30	1DX30	1DX30	G6Gr
		La	Cr	Mg	Ba	Ti	B	Al	Na	K	W	Hg	Sc	Tl	S	Ga	Se	Te	Ag	
Unit		ppm	ppm	%	ppm	%	ppm	%	%	ppm	ppm	ppm	ppm	%	ppm	ppm	ppm	ppm	ppm	gm/mt
MDL		1	1	0.01	1	0.001	1	0.01	0.001	0.01	0.01	0.01	0.01	0.05	1	0.5	0.2	0.2	50	
CK10-1107	Rock	8	5	0.07	53	0.004	<1	0.45	0.020	0.18	<0.1	<0.01	0.5	<0.1	<0.05	3	<0.5	<0.2		
CK10-1108	Rock	7	6	0.08	59	0.004	<1	0.52	0.018	0.20	<0.1	<0.01	0.6	0.1	<0.05	3	<0.5	<0.2		
CK10-1109	Rock	8	6	0.08	48	0.004	<1	0.51	0.019	0.16	<0.1	<0.01	0.6	<0.1	<0.05	3	<0.5	<0.2		
CK10-1110	Rock	9	5	0.11	53	0.004	<1	0.59	0.023	0.19	<0.1	<0.01	0.7	<0.1	0.05	4	<0.5	<0.2		
CK10-1111	Rock	29	2	0.04	39	0.003	<1	0.37	0.018	0.26	<0.1	<0.01	0.4	0.1	<0.05	2	<0.5	<0.2		
CK10-1112	Rock	27	2	0.04	40	0.003	<1	0.38	0.019	0.26	<0.1	<0.01	0.4	0.1	<0.05	2	<0.5	<0.2		
CK10-1113	Rock	16	5	0.11	38	0.015	<1	0.59	0.020	0.20	<0.1	<0.01	1.0	<0.1	<0.05	4	<0.5	<0.2		
CK10-1114	Rock	13	4	0.07	48	0.005	2	0.39	0.035	0.18	0.1	<0.01	0.4	<0.1	<0.05	3	<0.5	<0.2		
CK10-1115	Rock	40	4	0.07	58	0.003	1	0.37	0.029	0.20	<0.1	<0.01	0.3	0.1	<0.05	3	<0.5	<0.2		
CK10-1116	Rock	28	5	0.07	55	0.003	2	0.40	0.031	0.23	0.1	<0.01	0.3	0.1	<0.05	3	<0.5	<0.2		
CK10-1117	Rock	12	5	0.04	47	0.003	2	0.36	0.023	0.18	0.1	<0.01	0.5	0.1	<0.05	3	<0.5	<0.2		
CK10-1118	Rock	11	5	0.02	38	0.003	2	0.26	0.017	0.19	0.1	<0.01	0.2	0.1	<0.05	2	0.7	<0.2	200	
CK10-1119	Rock	12	4	<0.01	33	0.002	2	0.19	0.012	0.18	0.1	0.01	0.2	0.1	<0.05	1	0.7	<0.2	157	
CK10-1120	Rock	14	6	0.04	41	0.004	<1	0.41	0.021	0.21	<0.1	<0.01	0.5	0.2	<0.05	2	<0.5	<0.2		
CK10-1121	Rock	12	6	0.04	55	0.004	<1	0.31	0.027	0.18	<0.1	<0.01	0.3	0.1	<0.05	2	<0.5	<0.2		
CK10-1122	Rock	14	4	0.06	71	0.004	<1	0.42	0.028	0.25	<0.1	<0.01	0.3	0.1	<0.05	3	<0.5	<0.2		
CK10-1123	Rock	12	6	0.05	45	0.003	1	0.34	0.023	0.21	<0.1	<0.01	0.3	0.1	<0.05	2	<0.5	<0.2		
CK10-1124	Rock	11	3	0.07	43	0.003	2	0.41	0.023	0.22	<0.1	<0.01	0.5	0.1	<0.05	3	<0.5	<0.2		
CK10-1125	Rock	18	4	0.10	51	0.006	2	0.51	0.035	0.21	<0.1	<0.01	0.4	0.1	<0.05	4	<0.5	<0.2		
CK10-1126	Rock	17	4	0.08	48	0.013	<1	0.43	0.026	0.25	<0.1	<0.01	0.4	0.1	<0.05	3	<0.5	<0.2		
CK10-1127	Rock	78	2	0.03	91	0.109	2	0.37	0.032	0.23	0.8	<0.01	1.5	0.1	0.14	2	0.6	<0.2		
CK10-1128	Rock	46	6	0.07	50	0.013	<1	0.55	0.035	0.19	<0.1	<0.01	0.6	<0.1	<0.05	5	<0.5	<0.2		
CK10-1129	Rock	24	11	0.04	69	0.029	1	0.30	0.005	0.17	0.2	0.01	0.7	<0.1	0.08	3	<0.5	<0.2		
CK10-1130	Rock	27	8	0.03	79	0.053	<1	0.32	0.016	0.19	0.5	0.01	0.9	0.1	0.06	3	<0.5	<0.2		
CK10-1131	Rock	21	6	0.08	50	0.030	<1	0.64	0.035	0.20	0.2	<0.01	1.0	<0.1	<0.05	7	<0.5	<0.2		
CK10-1132	Rock	45	6	0.08	51	0.014	<1	0.61	0.040	0.20	0.2	<0.01	0.8	0.1	<0.05	6	<0.5	<0.2		
CK10-1133	Rock	30	4	0.05	49	0.003	<1	0.60	0.019	0.32	<0.1	<0.01	0.8	0.1	<0.05	4	<0.5	<0.2		
CK10-1134	Rock	29	4	0.05	42	0.004	1	0.52	0.032	0.20	<0.1	<0.01	0.6	0.1	<0.05	4	<0.5	<0.2		
CK10-1135	Rock	30	4	0.06	52	0.005	<1	0.53	0.031	0.26	<0.1	<0.01	0.7	0.1	<0.05	5	<0.5	<0.2		
CK10-1136	Rock	19	6	0.05	51	0.006	<1	0.43	0.036	0.16	<0.1	<0.01	0.8	<0.1	<0.05	3	<0.5	<0.2		

This report supersedes all previous preliminary and final reports with this file number dated prior to the date on this certificate. Signature indicates final approval; preliminary reports are unsigned and should be used for reference only.



Acme Analytical Laboratories (Vancouver) Ltd.
 1020 Cordova St. East Vancouver BC V6A 4A3 Canada
 Phone (604) 253-3158 Fax (604) 253-1716

www.acmelab.com

Client: **Kootenay Gold Inc.**
 Suite 920 - 1055 W. Hastings St.
 Vancouver BC V6E 2E9 Canada

Project: FOX
 Report Date: August 18, 2010

Page: 3 of 3 Part 1

CERTIFICATE OF ANALYSIS

VAN10003606.1

Method	WGHT	1DX30	1DX30	1DX30	1DX30	1DX30	1DX30	1DX30	1DX30	1DX30	1DX30	1DX30	1DX30	1DX30	1DX30	1DX30	1DX30	1DX30	1DX30	1DX30	1DX30
Analyte	Wgt	Mo	Cu	Pb	Zn	Ag	Ni	Co	Mn	Fe	As	Au	Th	Sr	Cd	Sb	Bi	V	Ca	P	
Unit	kg	ppm	ppm	ppm	ppm	ppm	ppm	ppm	ppm	%	ppm	ppb	ppm	ppm	ppm	ppm	ppm	ppm	%	%	
MDL	0.01	0.1	0.1	0.1	1	0.1	0.1	0.1	1	0.01	0.5	0.5	0.1	1	0.1	0.1	0.1	2	0.01	0.001	
CK10-1137	Rock	0.52	2.9	5.7	10.5	58	2.1	0.6	0.8	185	1.33	4.4	24.8	4.2	10	<0.1	0.3	<0.1	9	0.07	0.045
CK10-1138	Rock	0.55	2.7	67.6	251.6	120	>100	0.8	0.8	158	1.21	4.8	1153	4.4	4	0.6	0.5	<0.1	8	0.07	0.044
CK10-1139	Rock	0.70	0.7	1.2	30.6	16	1.3	0.3	0.3	73	1.09	13.8	10.4	4.5	9	<0.1	0.3	<0.1	6	0.04	0.041
CK10-1140	Rock	0.69	1.8	1.3	8.7	18	1.2	0.3	0.3	86	1.20	25.2	5.6	3.5	5	<0.1	0.5	<0.1	6	0.02	0.044
CK10-1141	Rock	0.50	2.5	1.3	6.6	9	0.5	0.2	0.1	48	1.03	20.2	5.5	5.7	5	<0.1	0.4	<0.1	5	0.01	0.033
CK10-1142	Rock	0.53	1.7	6.5	11.5	28	1.1	0.5	0.4	78	1.28	22.5	2.7	2.8	3	<0.1	0.4	<0.1	6	0.03	0.043
CK10-1143	Rock	0.50	10.4	4.0	17.7	73	8.4	0.2	0.5	152	1.95	5.9	23.2	3.1	7	0.1	0.5	<0.1	9	0.04	0.059



Acme Analytical Laboratories (Vancouver) Ltd.
 1020 Cordova St. East Vancouver BC V6A 4A3 Canada
 Phone (604) 253-3158 Fax (604) 253-1716

www.acmelab.com

Client: **Kootenay Gold Inc.**
 Suite 920 - 1055 W. Hastings St.
 Vancouver BC V6E 2E9 Canada

Project: FOX
 Report Date: August 18, 2010

Page: 3 of 3 Part 2

CERTIFICATE OF ANALYSIS

VAN10003606.1

Method	Analyte	1DX30	1DX30	1DX30	1DX30	1DX30	1DX30	1DX30	1DX30	1DX30	1DX30	1DX30	1DX30	1DX30	1DX30	1DX30	1DX30	1DX30	G6Gr
		La	Cr	Mg	Ba	Ti	B	Al	Na	K	W	Hg	Sc	Tl	S	Ga	Se	Te	Ag
Unit		ppm	ppm	%	ppm	%	ppm	%	%	ppm	ppm	ppm	ppm	ppm	%	ppm	ppm	ppm	gm/mt
MDL		1	1	0.01	1	0.001	1	0.01	0.001	0.01	0.1	0.01	0.1	0.05	1	0.5	0.2	50	
CK10-1137	Rock	22	5	0.06	47	0.005	<1	0.46	0.030	0.16	<0.1	<0.01	1.0	<0.1	<0.05	4	<0.5	<0.2	
CK10-1138	Rock	18	5	0.07	47	0.005	1	0.47	0.034	0.18	<0.1	<0.01	0.8	<0.1	<0.05	4	1.3	<0.2	393
CK10-1139	Rock	24	5	0.03	49	0.018	<1	0.37	0.026	0.18	<0.1	<0.01	0.6	<0.1	<0.05	3	<0.5	<0.2	
CK10-1140	Rock	40	5	0.02	56	0.009	<1	0.48	0.025	0.21	<0.1	<0.01	0.5	<0.1	<0.05	2	<0.5	<0.2	
CK10-1141	Rock	30	6	0.01	51	0.010	<1	0.30	0.024	0.20	<0.1	<0.01	0.5	<0.1	<0.05	2	<0.5	<0.2	
CK10-1142	Rock	30	6	0.04	45	0.004	<1	0.37	0.023	0.20	<0.1	<0.01	0.6	0.1	<0.05	3	<0.5	<0.2	
CK10-1143	Rock	46	7	0.04	64	0.003	<1	0.35	0.009	0.21	<0.1	0.02	1.1	0.1	<0.05	3	<0.5	<0.2	



Acme Analytical Laboratories (Vancouver) Ltd.

1020 Cordova St. East Vancouver BC V6A 4A3 Canada
 Phone (604) 253-3158 Fax (604) 253-1716

www.acmelab.com

Client: **Kootenay Gold Inc.**
 Suite 920 - 1055 W. Hastings St.
 Vancouver BC V6E 2E9 Canada

Project: FOX
 Report Date: August 18, 2010

Page: 1 of 1 Part 1

QUALITY CONTROL REPORT

VAN10003606.1

Method	WGHT	1DX30	1DX30	1DX30	1DX30	1DX30	1DX30	1DX30	1DX30	1DX30	1DX30	1DX30	1DX30	1DX30	1DX30	1DX30	1DX30	1DX30	1DX30	1DX30	1DX30
Analyte	Wgt	Mo	Cu	Pb	Zn	Ag	Ni	Co	Mn	Fe	As	Au	Th	Sr	Cd	Sb	Bi	V	Ca	P	
Unit	kg	ppm	ppm	ppm	ppm	ppm	ppm	ppm	ppm	%	ppm	ppb	ppm	ppm	ppm	ppm	ppm	ppm	%	%	
MDL	0.01	0.1	0.1	0.1	1	0.1	0.1	0.1	1	0.01	0.5	0.5	0.1	1	0.1	0.1	0.1	2	0.01	0.001	
Pulp Duplicates																					
CK10-1110	Rock	0.50	1.9	58.1	10.6	45	1.4	0.6	1.0	336	1.59	1.1	5.8	5.4	5	<0.1	0.2	<0.1	6	0.07	0.041
REP CK10-1110	QC		1.9	52.8	9.4	39	1.3	0.7	0.9	325	1.49	0.9	8.3	4.8	5	<0.1	0.2	<0.1	6	0.06	0.037
CK10-1138	Rock	0.55	2.7	67.6	251.6	120	>100	0.8	0.8	158	1.21	4.8	1153	4.4	4	0.6	0.5	<0.1	8	0.07	0.044
REP CK10-1138	QC		2.7	68.7	248.6	124	>100	0.8	0.9	157	1.21	5.4	1210	4.3	5	0.6	0.5	<0.1	8	0.07	0.044
Reference Materials																					
STD AGPROOF	Standard																				
STD CDN-ME-3	Standard																				
STD DS7	Standard		22.0	117.8	78.1	403	1.1	56.0	9.9	642	2.47	47.3	430.5	4.6	76	5.8	5.4	4.7	87	0.99	0.069
STD DS7	Standard		22.4	119.8	70.6	411	1.0	56.8	10.0	644	2.42	47.5	71.7	4.6	78	6.1	5.4	4.6	85	0.98	0.072
STD DS7	Standard		20.2	98.0	67.2	376	1.1	52.3	9.3	624	2.30	50.2	76.1	4.2	73	6.4	5.9	4.5	80	0.99	0.076
STD DS7	Standard		19.9	102.0	64.2	388	1.1	54.4	9.1	644	2.36	49.5	63.9	4.6	77	6.6	5.7	4.3	81	1.01	0.076
STD DS7 Expected			20.5	109	70.6	411	0.9	56	9.7	627	2.39	48.2	70	4.4	69	6.4	4.6	4.5	84	0.93	0.08
STD CDN-ME-3 Expected																					
STD AGPROOF Expected																					
BLK	Blank		<0.1	<0.1	<0.1	<1	<0.1	<0.1	<0.1	<1	<0.01	<0.5	<0.5	<0.1	<1	<0.1	<0.1	<0.1	<2	<0.01	<0.001
BLK	Blank		<0.1	<0.1	<0.1	<1	<0.1	<0.1	<0.1	<1	<0.01	<0.5	<0.5	<0.1	<1	<0.1	<0.1	<0.1	<2	<0.01	<0.001
BLK	Blank																				
BLK	Blank																				
Prep Wash																					
G1	Prep Blank	<0.01	0.1	4.5	3.2	52	<0.1	3.0	4.8	634	2.18	<0.5	2.5	7.8	60	<0.1	<0.1	<0.1	42	0.57	0.087
G1	Prep Blank	<0.01	<0.1	3.8	2.7	47	<0.1	3.2	4.6	580	1.95	<0.5	2.3	6.4	56	<0.1	<0.1	<0.1	37	0.51	0.078



Acme Analytical Laboratories (Vancouver) Ltd.

1020 Cordova St. East Vancouver BC V6A 4A3 Canada
 Phone (604) 253-3158 Fax (604) 253-1716

www.acmelab.com

Client: **Kootenay Gold Inc.**
 Suite 920 - 1055 W. Hastings St.
 Vancouver BC V6E 2E9 Canada

Project: FOX
 Report Date: August 18, 2010

Page: 1 of 1 Part 2

QUALITY CONTROL REPORT

VAN10003606.1

Method	Analyte	Unit	MDL	1DX30 La	1DX30 Cr	1DX30 Mg	1DX30 Ba	1DX30 Ti	1DX30 B	1DX30 Al	1DX30 Na	1DX30 K	1DX30 W	1DX30 Hg	1DX30 Sc	1DX30 Tl	1DX30 S	1DX30 Ga	1DX30 Se	1DX30 Te	G6Gr Ag
				ppm	ppm	%	ppm	%	ppm	%	%	%	ppm	ppm	ppm	ppm	%	ppm	ppm	ppm	gm/mt
				1	1	0.01	1	0.001	1	0.01	0.001	0.01	0.1	0.01	0.1	0.05	1	0.5	0.2		50
Pulp Duplicates																					
CK10-1110	Rock			9	5	0.11	53	0.004	<1	0.59	0.023	0.19	<0.1	<0.01	0.7	<0.1	0.05	4	<0.5	<0.2	
REP CK10-1110	QC			9	5	0.09	49	0.004	<1	0.55	0.021	0.17	<0.1	<0.01	0.7	<0.1	<0.05	3	<0.5	<0.2	
CK10-1138	Rock			18	5	0.07	47	0.005	1	0.47	0.034	0.18	<0.1	<0.01	0.8	<0.1	<0.05	4	1.3	<0.2	393
REP CK10-1138	QC			18	5	0.07	48	0.005	<1	0.49	0.035	0.17	<0.1	0.01	0.7	0.1	<0.05	4	0.8	<0.2	
Reference Materials																					
STD AGPROOF	Standard																				95
STD CDN-ME-3	Standard																				289
STD DS7	Standard			14	215	1.08	397	0.142	39	1.04	0.097	0.45	3.7	0.24	2.3	4.5	0.19	5	3.6	1.8	
STD DS7	Standard			13	214	1.05	341	0.140	37	1.06	0.096	0.45	3.6	0.23	2.6	4.2	0.19	5	3.1	1.3	
STD DS7	Standard			13	214	1.03	392	0.115	35	1.00	0.095	0.45	3.5	0.23	2.2	4.0	0.19	5	3.3	0.7	
STD DS7	Standard			14	228	1.06	387	0.127	41	1.08	0.101	0.45	3.6	0.23	2.6	4.1	0.19	5	3.4	1.1	
STD DS7 Expected				12	179	1.05	410	0.124	39	0.959	0.089	0.44	3.4	0.2	2.5	4.2	0.19	5	3.5	1.08	
STD CDN-ME-3 Expected																					276
STD AGPROOF Expected																					94
BLK	Blank			<1	<1	<0.01	<1	<0.001	<1	<0.01	<0.001	<0.01	<0.1	<0.01	<0.1	<0.1	<0.05	<1	<0.5	<0.2	
BLK	Blank			<1	<1	<0.01	<1	<0.001	<1	<0.01	<0.001	<0.01	<0.1	<0.01	<0.1	<0.1	<0.05	<1	<0.5	<0.2	
BLK	Blank																				<50
BLK	Blank																				<50
Prep Wash																					
G1	Prep Blank			14	10	0.63	184	0.168	<1	1.09	0.088	0.58	0.1	<0.01	2.5	0.4	<0.05	5	<0.5	<0.2	
G1	Prep Blank			12	9	0.56	173	0.158	<1	0.96	0.077	0.52	<0.1	<0.01	2.2	0.3	<0.05	5	<0.5	<0.2	



1020 Cordova St. East Vancouver BC V6A 4A3 Canada

Acme Analytical Laboratories (Vancouver) Ltd.

www.acmelab.com

Client: **Kootenay Gold Inc.**
Suite 920 - 1055 W. Hastings St.
Vancouver BC V6E 2E9 Canada

Submitted By: Email Distribution List
Receiving Lab: Canada-Vancouver
Received: October 12, 2010
Report Date: November 15, 2010
Page: 1 of 2

CERTIFICATE OF ANALYSIS

VAN10005387.1

CLIENT JOB INFORMATION

Project: FOX
Shipment ID:
P.O. Number
Number of Samples: 22

SAMPLE PREPARATION AND ANALYTICAL PROCEDURES

Method Code	Number of Samples	Code Description	Test Wgt (g)	Report Status	Lab
R200-250	22	Crush, split and pulverize 250 g rock to 200 mesh			VAN
1DX3	22	1:1:1 Aqua Regia digestion ICP-MS analysis	30	Completed	VAN

SAMPLE DISPOSAL

DISP-PLP Dispose of Pulp After 90 days
DISP-RJT Dispose of Reject After 90 days

ADDITIONAL COMMENTS

Acme does not accept responsibility for samples left at the laboratory after 90 days without prior written instructions for sample storage or return.

Invoice To: Kootenay Gold Inc.
Suite 920 - 1055 W. Hastings St.
Vancouver BC V6E 2E9
Canada

CC:



This report supersedes all previous preliminary and final reports with this file number dated prior to the date on this certificate. Signature indicates final approval; preliminary reports are unsigned and should be used for reference only.
All results are considered the confidential property of the client. Acme assumes the liabilities for actual cost of analysis only.
** asterisk indicates that an analytical result could not be provided due to unusually high levels of interference from other elements.



Acme Analytical Laboratories (Vancouver) Ltd.
 1020 Cordova St. East Vancouver BC V6A 4A3 Canada
 Phone (604) 253-3158 Fax (604) 253-1716

www.acmelab.com

Client: **Kootenay Gold Inc.**
 Suite 920 - 1055 W. Hastings St.
 Vancouver BC V6E 2E9 Canada

Project: FOX
 Report Date: November 15, 2010

Page: 2 of 2 Part 1

CERTIFICATE OF ANALYSIS

VAN10005387.1

Method	Analyte	WGHT	1DX30	1DX30	1DX30	1DX30	1DX30	1DX30	1DX30	1DX30	1DX30	1DX30	1DX30	1DX30	1DX30	1DX30	1DX30	1DX30	1DX30	1DX30	1DX30
		Wgt	Mo	Cu	Pb	Zn	Ag	Ni	Co	Mn	Fe	As	U	Au	Th	Sr	Cd	Sb	Bi	V	Ca
Unit	MDL	kg	ppm	ppm	ppm	ppm	ppm	ppm	ppm	%	ppm	ppm	ppb	ppm	ppm	ppm	ppm	ppm	ppm	ppm	%
		0.01	0.1	0.1	0.1	1	0.1	0.1	0.1	1	0.01	0.5	0.1	0.5	0.1	1	0.1	0.1	0.1	2	0.01
CK10-1231	Rock	0.59	1.7	2.5	21.8	43	<0.1	0.8	0.8	199	1.12	3.1	1.0	<0.5	5.3	5	0.1	0.3	<0.1	8	0.11
CK10-1232	Rock	0.46	19.5	0.8	30.6	16	0.3	0.2	<0.1	35	0.36	1.6	2.1	5.0	10.8	5	0.1	0.3	0.1	2	0.02
CK10-1233	Rock	0.48	1.9	2.8	7.8	73	<0.1	2.1	1.5	243	1.34	3.0	0.6	1.4	2.7	5	<0.1	0.3	<0.1	11	0.12
CK10-1234	Rock	0.64	2.0	2.1	17.5	27	0.3	0.6	0.3	78	1.42	17.9	0.8	3.6	4.6	9	<0.1	0.8	<0.1	7	0.04
CK10-1235	Rock	0.50	4.0	9.2	13.3	22	0.3	0.7	0.5	108	1.51	7.5	0.6	5.8	5.0	8	0.1	0.3	<0.1	8	0.04
CK10-1236	Rock	0.64	2.7	3.6	12.8	33	0.1	0.7	0.4	146	1.26	5.9	0.7	2.6	5.2	5	<0.1	0.4	<0.1	9	0.06
CK10-1237	Rock	0.51	1.4	6.4	12.6	45	0.2	0.9	0.8	209	1.82	6.8	0.6	4.8	4.9	5	0.2	0.4	<0.1	10	0.03
CK10-1238	Rock	0.50	1.2	3.3	18.2	36	<0.1	0.9	0.9	166	1.55	3.7	0.9	3.5	5.0	6	<0.1	0.3	<0.1	10	0.04
CK10-1239	Rock	0.53	0.5	4.5	27.2	74	<0.1	1.2	2.6	528	1.49	1.4	1.0	<0.5	5.1	7	<0.1	0.1	<0.1	12	0.64
CK10-1240	Rock	0.61	2.8	14.4	29.9	31	0.5	0.9	1.0	189	1.31	4.0	0.7	11.6	5.7	10	<0.1	0.3	<0.1	8	0.07
FC271	Rock	0.52	1.3	2.3	25.2	70	0.2	0.7	0.7	215	1.27	5.1	1.0	1.6	3.3	6	0.2	0.6	<0.1	11	0.12
FC272	Rock	0.56	0.6	1.3	17.2	34	0.2	0.2	0.8	159	1.06	6.6	1.0	2.5	3.6	6	<0.1	0.7	0.1	9	0.10
FC273	Rock	0.60	4.0	1.8	50.6	32	0.3	0.4	0.3	60	1.34	13.2	1.3	4.7	3.5	12	<0.1	0.7	0.2	7	0.04
FC274	Rock	0.72	3.7	1.5	22.2	24	0.3	0.4	0.3	107	1.63	11.7	0.9	<0.5	3.5	12	<0.1	0.7	<0.1	7	0.05
FC275	Rock	0.80	6.9	1.5	8.7	25	0.2	0.4	0.2	133	0.63	3.2	1.8	<0.5	7.7	4	<0.1	0.4	0.1	3	0.01
FC276	Rock	0.51	9.2	2.3	78.3	15	1.1	0.2	0.1	82	0.84	5.2	1.5	73.7	8.4	5	<0.1	0.5	0.2	3	<0.01
FC277	Rock	0.65	5.8	1.2	11.2	16	0.1	0.5	0.4	88	0.53	1.6	1.2	5.1	3.2	5	<0.1	0.2	<0.1	4	0.06
FC278	Rock	0.66	9.2	1.1	13.4	12	0.2	0.6	0.1	65	0.58	2.5	1.6	4.0	7.3	7	<0.1	0.3	0.1	3	0.05
FC279	Rock	0.70	6.1	2.4	11.4	23	0.1	0.6	0.4	178	0.65	1.2	2.7	1.1	7.7	6	<0.1	0.2	<0.1	3	0.02
FC280	Rock	0.68	4.2	0.8	10.8	9	0.1	0.4	0.1	61	0.59	1.0	3.1	<0.5	7.4	4	<0.1	0.2	<0.1	2	<0.01
FC281	Rock	0.65	7.6	0.9	12.6	7	0.2	0.2	0.1	42	0.53	2.5	1.5	0.7	7.2	5	<0.1	0.3	0.1	2	0.01
FC282	Rock	0.68	19.7	0.7	13.0	7	0.3	0.2	0.2	43	0.43	5.8	1.6	5.6	3.8	5	<0.1	0.5	<0.1	4	0.05



Acme Analytical Laboratories (Vancouver) Ltd.
 1020 Cordova St. East Vancouver BC V6A 4A3 Canada
 Phone (604) 253-3158 Fax (604) 253-1716

www.acmelab.com

Client: **Kootenay Gold Inc.**
 Suite 920 - 1055 W. Hastings St.
 Vancouver BC V6E 2E9 Canada

Project: FOX
 Report Date: November 15, 2010

Page: 2 of 2 Part 2

CERTIFICATE OF ANALYSIS

VAN10005387.1

Method	1DX30	1DX30	1DX30	1DX30	1DX30	1DX30	1DX30	1DX30	1DX30	1DX30	1DX30	1DX30	1DX30	1DX30	1DX30	1DX30	1DX30	1DX30	1DX30
Analyte	P	La	Cr	Mg	Ba	Ti	B	Al	Na	K	W	Hg	Sc	Ti	S	Ga	Se	Te	
Unit	%	ppm	ppm	%	ppm	%	ppm	%	%	%	ppm	ppm	ppm	ppm	%	ppm	ppm	ppm	
MDL	0.001	1	1	0.01	1	0.001	1	0.01	0.001	0.01	0.1	0.01	0.1	0.1	0.05	1	0.5	0.2	
CK10-1231	Rock	0.053	34	<1	0.06	54	0.023	<1	0.48	0.021	0.30	0.2	<0.01	0.8	0.2	<0.05	3	<0.5	<0.2
CK10-1232	Rock	0.009	31	<1	<0.01	59	0.002	<1	0.18	0.004	0.24	<0.1	<0.01	0.4	0.1	<0.05	1	<0.5	<0.2
CK10-1233	Rock	0.060	36	2	0.10	44	0.011	<1	0.54	0.033	0.31	<0.1	0.01	0.7	0.1	<0.05	4	<0.5	0.3
CK10-1234	Rock	0.039	21	1	0.03	62	0.067	<1	0.30	0.055	0.17	0.4	<0.01	1.0	<0.1	0.16	3	0.8	<0.2
CK10-1235	Rock	0.039	19	<1	0.04	71	0.035	<1	0.42	0.042	0.21	0.2	<0.01	0.7	<0.1	0.07	3	<0.5	<0.2
CK10-1236	Rock	0.046	24	<1	0.05	50	0.051	<1	0.50	0.038	0.24	0.3	<0.01	0.7	<0.1	<0.05	4	<0.5	<0.2
CK10-1237	Rock	0.048	16	<1	0.07	41	0.050	<1	0.61	0.038	0.13	0.3	0.02	1.1	0.1	<0.05	5	<0.5	<0.2
CK10-1238	Rock	0.039	20	<1	0.07	62	0.068	<1	0.53	0.042	0.20	0.4	<0.01	1.1	<0.1	<0.05	4	<0.5	<0.2
CK10-1239	Rock	0.039	42	1	0.11	63	0.081	<1	0.81	0.055	0.29	0.6	<0.01	1.4	0.1	<0.05	7	<0.5	<0.2
CK10-1240	Rock	0.047	40	<1	0.05	63	0.012	<1	0.51	0.052	0.20	0.2	<0.01	1.1	<0.1	<0.05	5	<0.5	<0.2
FC271	Rock	0.054	41	<1	0.08	61	0.046	<1	0.50	0.046	0.29	0.3	<0.01	1.0	0.1	<0.05	4	<0.5	<0.2
FC272	Rock	0.043	34	<1	0.07	52	0.039	<1	0.42	0.041	0.26	0.2	<0.01	0.9	0.1	<0.05	3	<0.5	<0.2
FC273	Rock	0.043	28	<1	0.04	82	0.078	<1	0.32	0.012	0.22	0.6	<0.01	0.8	<0.1	0.08	3	0.5	<0.2
FC274	Rock	0.043	25	<1	0.05	76	0.059	<1	0.37	0.030	0.26	0.4	0.02	0.8	0.1	0.11	4	<0.5	<0.2
FC275	Rock	0.011	14	<1	0.02	29	0.013	<1	0.32	0.031	0.13	0.1	<0.01	0.6	<0.1	<0.05	2	<0.5	<0.2
FC276	Rock	0.010	12	<1	0.02	37	0.029	<1	0.27	0.034	0.16	0.2	0.01	0.5	<0.1	<0.05	2	0.6	<0.2
FC277	Rock	0.035	23	<1	0.03	60	0.026	<1	0.30	0.023	0.19	0.2	<0.01	0.6	0.1	<0.05	2	<0.5	<0.2
FC278	Rock	0.014	18	<1	0.02	26	0.009	<1	0.22	0.025	0.21	0.1	<0.01	0.4	0.1	<0.05	1	<0.5	<0.2
FC279	Rock	0.011	21	1	0.03	26	0.010	<1	0.31	0.026	0.16	0.1	<0.01	0.6	<0.1	<0.05	2	<0.5	<0.2
FC280	Rock	0.007	11	<1	<0.01	28	0.011	<1	0.19	0.021	0.17	<0.1	<0.01	0.4	<0.1	<0.05	2	<0.5	<0.2
FC281	Rock	0.012	9	<1	<0.01	32	0.010	<1	0.23	0.018	0.23	0.1	<0.01	0.4	<0.1	<0.05	1	<0.5	<0.2
FC282	Rock	0.031	23	<1	0.01	34	0.004	<1	0.24	0.009	0.22	<0.1	<0.01	0.4	<0.1	<0.05	1	<0.5	<0.2



Acme Analytical Laboratories (Vancouver) Ltd.

1020 Cordova St. East Vancouver BC V6A 4A3 Canada
 Phone (604) 253-3158 Fax (604) 253-1716

www.acmelab.com

Client: **Kootenay Gold Inc.**
 Suite 920 - 1055 W. Hastings St.
 Vancouver BC V6E 2E9 Canada

Project: FOX
 Report Date: November 15, 2010

Page: 1 of 1 Part 1

QUALITY CONTROL REPORT

VAN10005387.1

Method	WGHT	1DX30	1DX30	1DX30	1DX30	1DX30	1DX30	1DX30	1DX30	1DX30	1DX30	1DX30	1DX30	1DX30	1DX30	1DX30	1DX30	1DX30	1DX30	1DX30	
Analyte	Wgt	Mo	Cu	Pb	Zn	Ag	Ni	Co	Mn	Fe	As	U	Au	Th	Sr	Cd	Sb	Bi	V	Ca	
Unit	kg	ppm	ppm	ppm	ppm	ppm	ppm	ppm	ppm	%	ppm	ppm	ppb	ppm	ppm	ppm	ppm	ppm	ppm	%	
MDL	0.01	0.1	0.1	0.1	1	0.1	0.1	0.1	1	0.01	0.5	0.1	0.5	0.1	1	0.1	0.1	0.1	2	0.01	
Pulp Duplicates																					
REP G1	QC	<0.1	2.7	48.1	75	<0.1	3.7	4.4	596	2.03	<0.5	1.7	<0.5	5.5	52	0.1	<0.1	<0.1	39	0.52	
Reference Materials																					
STD DS7	Standard	20.6	113.2	71.6	411	0.9	57.6	9.5	629	2.44	50.9	5.0	72.1	4.6	70	6.4	5.9	4.2	83	0.97	
STD DS7	Standard	21.2	113.4	77.3	398	1.1	56.4	9.5	631	2.44	51.3	5.3	76.8	5.1	69	6.2	5.7	4.5	83	0.98	
STD DS7 Expected		20.5	109	70.6	411	0.9	56	9.7	627	2.39	48.2	4.9	70	4.4	69	6.4	4.6	4.5	84	0.93	
BLK	Blank	<0.1	<0.1	<0.1	<1	<0.1	<0.1	<0.1	<1	<0.01	<0.5	<0.1	<0.5	<0.1	<1	<0.1	<0.1	<0.1	<2	<0.01	
Prep Wash																					
G1	Prep Blank	<0.01																			
G1	Prep Blank	<0.01	0.2	2.4	48.8	74	<0.1	3.3	4.3	607	2.03	<0.5	1.7	1.1	5.4	53	0.1	<0.1	<0.1	39	0.55
G1	Prep Blank	<0.1	2.8	48.9	71	<0.1	3.1	4.3	597	1.98	<0.5	1.7	0.7	5.3	49	<0.1	<0.1	<0.1	38	0.51	



Acme Analytical Laboratories (Vancouver) Ltd.

1020 Cordova St. East Vancouver BC V6A 4A3 Canada
 Phone (604) 253-3158 Fax (604) 253-1716

www.acmelab.com

Client: Kootenay Gold Inc.
 Suite 920 - 1055 W. Hastings St.
 Vancouver BC V6E 2E9 Canada

Project: FOX
Report Date: November 15, 2010

Page: 1 of 1 Part 2

QUALITY CONTROL REPORT

VAN10005387.1

Method	1DX30	1DX30	1DX30	1DX30	1DX30	1DX30	1DX30	1DX30	1DX30	1DX30	1DX30	1DX30	1DX30	1DX30	1DX30	1DX30	1DX30	1DX30	
Analyte	P	La	Cr	Mg	Ba	Ti	B	Al	Na	K	W	Hg	Sc	Tl	S	Ga	Se	Te	
Unit	%	ppm	ppm	%	ppm	%	ppm	%	%	%	ppm	ppm	ppm	ppm	%	ppm	ppm	ppm	
MDL	0.001	1	1	0.01	1	0.001	1	0.01	0.001	0.01	0.1	0.01	0.1	0.1	0.05	1	0.5	0.2	
Pulp Duplicates																			
REP G1	QC	0.085	10	5	0.55	186	0.127	1	1.05	0.133	0.57	<0.1	<0.01	2.2	0.3	<0.05	5	<0.5	0.2
Reference Materials																			
STD DS7	Standard	0.079	13	207	1.07	400	0.123	38	1.04	0.097	0.49	3.9	0.23	2.4	3.9	0.21	5	3.2	1.3
STD DS7	Standard	0.074	14	206	1.08	416	0.128	38	1.05	0.097	0.49	3.8	0.23	2.5	4.2	0.21	5	3.4	1.7
STD DS7 Expected		0.08	12	179	1.05	410	0.124	39	0.959	0.089	0.44	3.4	0.2	2.5	4.2	0.19	5	3.5	1.08
BLK	Blank	<0.001	<1	<1	<0.01	<1	<0.001	<1	<0.01	<0.001	<0.01	<0.1	<0.01	<0.1	<0.1	<0.05	<1	<0.5	<0.2
Prep Wash																			
G1	Prep Blank																		
G1	Prep Blank	0.086	10	6	0.54	182	0.127	<1	1.08	0.144	0.56	<0.1	<0.01	2.2	0.3	<0.05	5	<0.5	<0.2
G1	Prep Blank	0.087	9	5	0.53	179	0.122	1	1.06	0.137	0.55	<0.1	<0.01	2.2	0.3	<0.05	5	<0.5	<0.2