

BC Geological Survey
Assessment Report
32407

PROSPECTING REPORT

Event #4783354

32407

2009 - 2010

PROSPECTING REPORT

CLAIM NAME – FOX2

TENURE # 617223

EVENT # 4783354

COQUAHALLA GOLD BELT REGION
NEW WESTMINSTER DISTRICT
MAP 092H

GPS COORDINATE REFERENCE
CENTER OF CLAIM
49. 22' 14" N, 121. 9' 4" W

REPORT PREPARED BY

TENURE OWNER
ROBERT D'AOUST
FMC 106134

AUGUST 10, 2010

TABLE OF CONTENTS

Page	i Copy of Tenure Renewal
	1 Cover Page
	2 Table of Contents
	3 Introduction / Location & Access / Previous work / General Geology
	4 Summary / Conclusion
	5 Work Evaluation & Cost Statement / Attending Parties & Qualifications Affidavit
	6 General Location Reference Map – Map 1
	7 Local Area Reference Map – Map 2
	8 Work Area Map – Map - 3

Introduction & Location

The Fox2 property, tenure #617223, lies approximately 17 air kilometers due-east of the City of Hope. The tenure is an eight cell mineral claim situated on Montigny creek, a small tributary of Sowaqua creek. Sowaqua Creek is a northwesterly flowing tributary of the Coquihalla River. The property lies within the Coquihalla Gold Belt, a northwest trending mineralization zone, underlain by the Hozameen Fault. The general area is well notarized for hosting gold-bearing mineralization, with the more prominent deposit being that of the Carolin Mine, located approximately 15 kilometers to the north-north west.

Access

Leaving the City of Hope, travel north on Hwy 5 (Coquihalla Hwy) approximately 22kms, then exit the highway at the Sowaqua Creek turn off. Travel down the exit ramp and enter the large gravel parking area; on your left is the sign denoting the entrance to the Sowaqua Creek Forestry road. Travel up this reasonably good two-lane gravel road 14kms to reach the western boundary of the claim.

Previous Work in the Area

On investigation into the Sowaqua Creek Valley I found two historical Minfile reports (092HSW148 & 092HSW080) and an Aris report 11449 that revealed that some values of gold and platinum had been found. I did not find any reference to Montigny Creek.

General Area Geology

In reference to the above noted work reports, the tenure's area generalized geology is described as being underlain by Permian to Jurassic Hozameen Complex rocks comprised mainly of inter-bedded chert, pelite and volcanic sandstones with distinct gray and black banding. The ultramafic rocks which occur along the Hozameen fault are part of the Coquihalla Serpentine Belt. Thirty-three samples containing silica with visible pyrrhotite and pyrite were assayed. Assays yielded traces of gold, silver, copper and nickel (Assessment Report 11449).

Summary

Reconnaissance prospecting was conducted in three distinct areas of the claim on September 5, 2009. A second reconnaissance trip was conducted on November 01, 2009, targeting Area #1.

Please reference to map # 3 – attached

Area #1 - from the Sowaqua Creek Road bridge across Montigny Creek we hiked approximately 650 meters upriver through the river canyon. We inspected outcroppings and obtained grab samples. We also gathered up approximately 25 kilograms of -.45cm creek silt material for further processing and inspection.

Area #2 – while hiking along the creek we observed a slide area on the eastern bank, the bank at that point was approximately 75 meters high, after returning to our starting point at the bridge, drove around to the top of the ridge over looking the creek from the slide area, we then proceeded to prospect in the area, dug several small holes and trenches, gathered up more material (approximately 25 kilograms of -.45cm material) for further inspection

Area #3 – from the top off the slide area we could see across the creek to an area of previous logging activity, a log landing site that been dug into the hill side, we proceeded to that area; prospected and probed at areas of exposed under burden, we retrieved some material for further inspection.

Conclusions

Using manual crushing methods and hydro emulsion processes, we separated the material and inspected. The material from area #2 and area #3 did not contain any geology of interest. The material from area #1; along the creek; produced 5 very small flakes of gold. The gold seemed to be separated from material that was mostly “blue clay” as opposed to “rock” material. A second trip was made to the claim to obtain more of the “blue clay” material. When processed, the material released 7 more small flakes of gold. It was concluded that further exploration should be afforded this property, thus the tenure was renewed for another term.

Work Evaluation & Cost Statement

September 05, 2009

---- 14.0 Man Hours Prospecting---

Labor	7.0 hours	\$ 140.00
Supervisor	7.0 hours	\$ 210.00

November 01, 2009

-----6.0 Man Hours Prospecting---

Supervisor	6.0 hours	\$ 180.00
-------------------	------------------	------------------

sub-total **\$ 530.00**

Allowable Vehicle Expenses (20%) **\$ 106.00**

Report Preparation **\$ 64.00**

Total **\$ 700.00**


Attending Parties & Qualifications

Robert D'Aoust – 25 years prospecting experience
fmc - 106134

John Crowe – 2 years prospecting experience
fmc – 225201

August 10, 2010

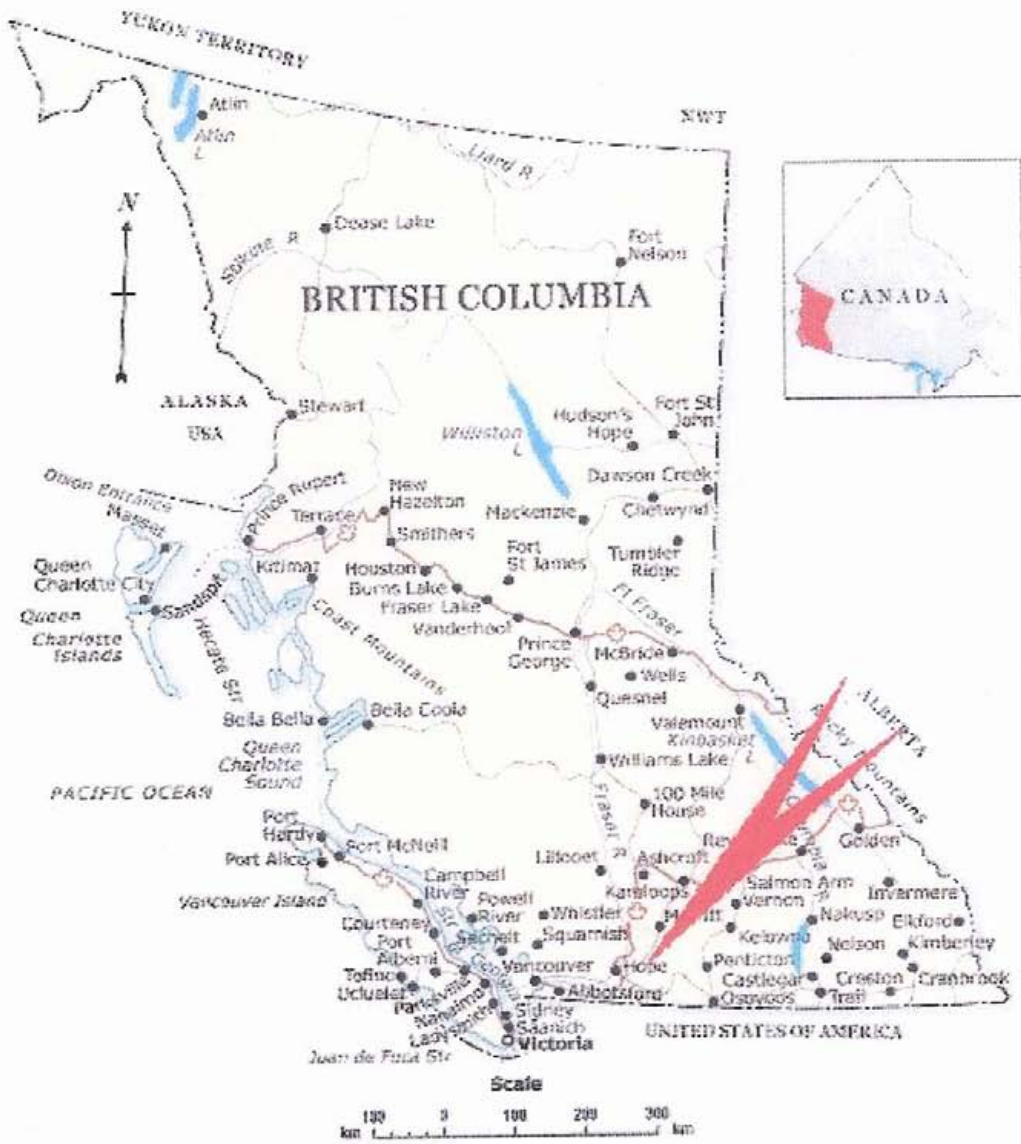
Report prepared by,



Robert Andre D'Aoust

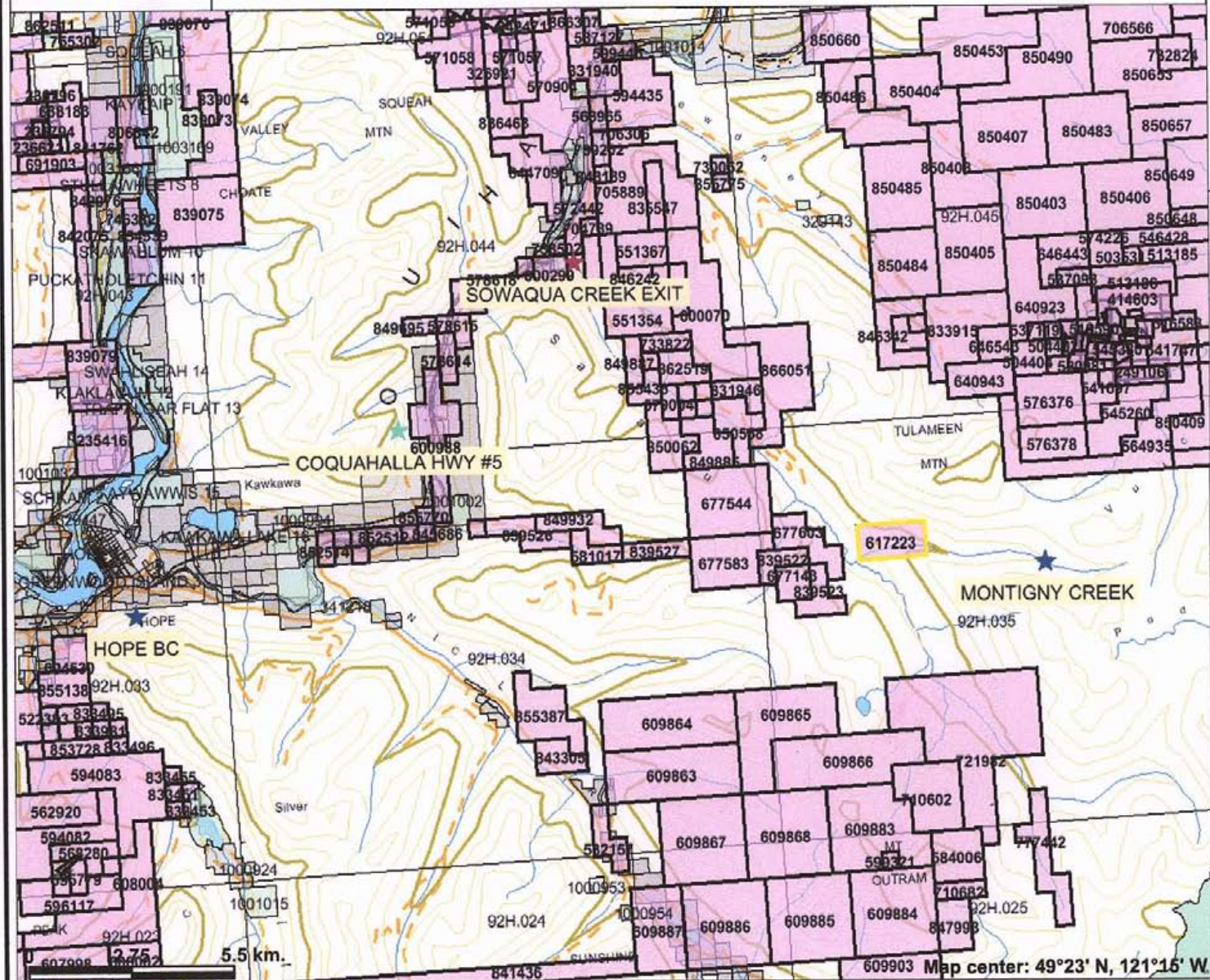
REFERENCE MAP 1

Geographical Location



EVENT 4783354

FOX2 - MONTIGNY CREEK - TN # 617223



Legend

- Indian Reserves
- National Parks
- Conservancy Areas
- Parks
- Mineral Tenure (current)
- Mineral Claim
- Mineral Lease
- Mineral Reserves (current)
- Placer Claim Designation
- Placer Lease Designation
- No Staking Reserve
- Conditional Reserve
- Release Required Reserve
- Surface Restriction
- Recreation Area
- Others
- Survey Parcels
- BCGS Grid
- Contours (1:250K)
- Contour - Index
- Contour - Intermediate
- Area of Exclusion
- Area of Indefinite Contours
- Annotation (1:250K)
- Transportation - Points (1:250K)
- Airfield
- Anchorage - Seaplane
- Ferry Route
- Heliport
- Seaplane Base
- Air Field
- Airport
- Air Feature - Condition Unknown

Scale: 1:161,237

Event # 4783354

-7-

This map is a user generated static output from an Internet mapping site and is for general reference only. Data layers that appear on this map may or may not be accurate, current, or otherwise reliable. THIS MAP IS NOT TO BE USED FOR NAVIGATION.

Notes: AREA LOCATION MAP

Event # 4783354

MAP # 3

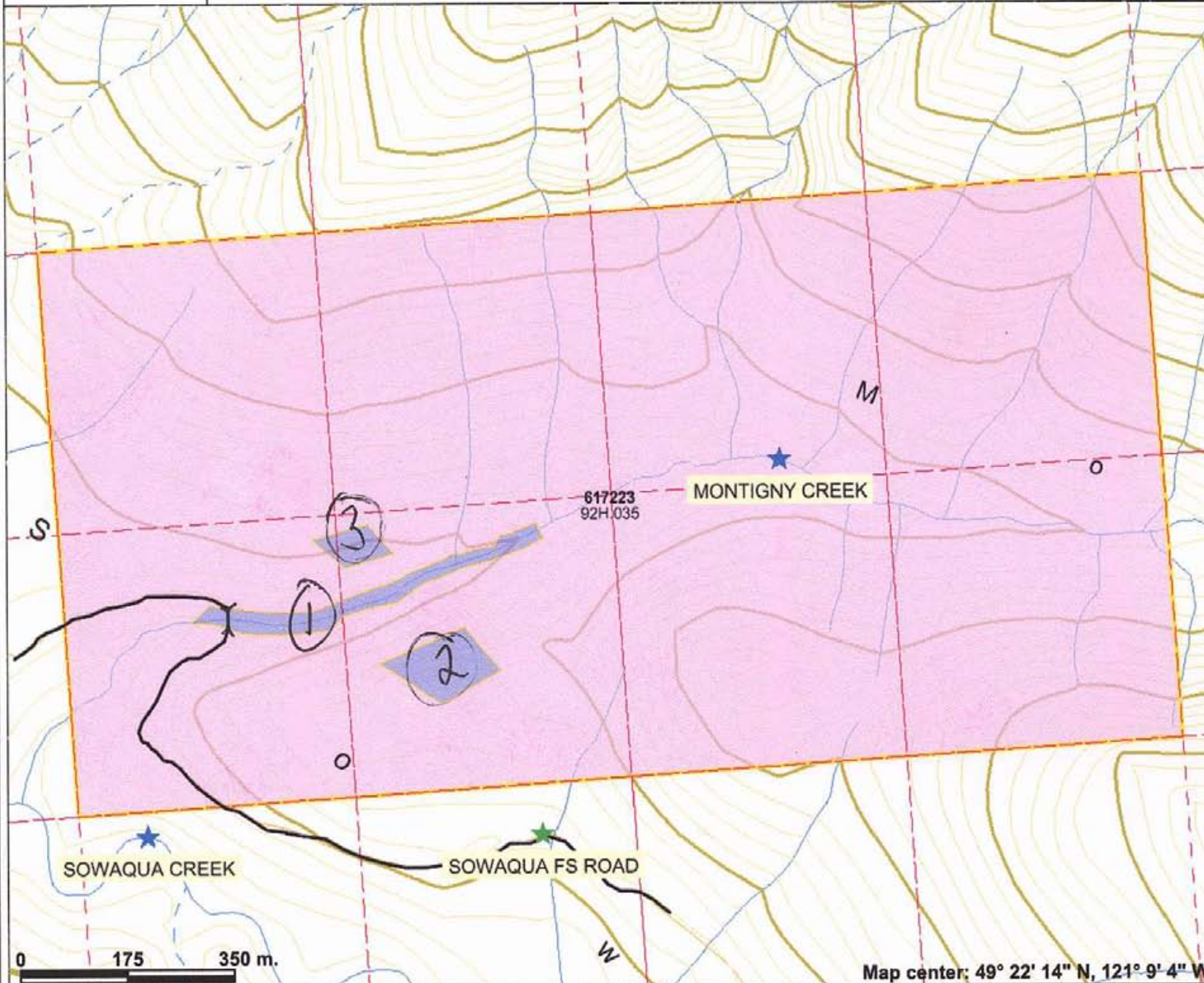
FOX2 - MONTIGNY CREEK - TN #617223



Legend

- Indian Reserves
- National Parks
- Conservancy Areas
- Parks
- MTO Grid (MTO)
- Blocked by MEM
- Other
- Mineral Tenure (current)**
- Mineral Claim
- Mineral Lease
- Mineral Reserves (current)**
- Placer Claim Designation
- Placer Lease Designation
- No Staking Reserve
- Conditional Reserve
- Release Required Reserve
- Surface Restriction
- Recreation Area
- Others
- Integrated Cadastral Fabric
- Survey Parcels
- BCGS Grid
- Contours (TRIM)**
- Contour - Index
- Contour - Index.Indefinite
- Contour - Index.Depression
- Contour - Index.Depression Indefinite
- Contour - Intermediate
- Contour - Intermediate.Indefinite
- Contour - Intermediate.Depression
- Contour - Intermediate.Depression Indefinite
- Area of Exclusion

Scale: 1:9,922



This map is a user generated static output from an Internet mapping site and is for general reference only. Data layers that appear on this map may or may not be accurate, current, or otherwise reliable. THIS MAP IS NOT TO BE USED FOR NAVIGATION.

Notes: AREAS OF PROSPECTING - 2009 - 2010 SEASON

EVENT # 4783354

-8-
EVENT # 4783354

-8-