



Prospecting and Technical Report

Molly1 Property

Molly1 (836364)

Victoria Mining Division

92C / 09

Lat: 48° 52' N

Long: 124° 05' W

BC Geological Survey
Assessment Report
32470

Owned and Operated by
Nava Resources Canada Inc.

Don W. Blackadar
Nava Resources Canada Inc.
Vancouver, B.C.
October 17, 2011

32,470

GEOLOGICAL SURVEY BRANCH
ASSESSMENT REPORT

Ministry of Energy, Mines & Petroleum Resources
Mining & Minerals Division
BC Geological Survey

Assessment Report
Title Page and Summary

TYPE OF REPORT [type of survey(s)]: Prospecting and Technical Report

TOTAL COST: \$4571.19

AUTHOR(S): Don W. Blackadar

SIGNATURE(S): *Don Blackadar*

NOTICE OF WORK PERMIT NUMBER(S)/DATE(S): Not required (notice to landowners sent September 8, 2010) YEAR OF WORK: 2010

STATEMENT OF WORK - CASH PAYMENTS EVENT NUMBER(S)/DATE(S): 5011479: September 20, 2011

PROPERTY NAME: Molly1 (836364)

CLAIM NAME(S) (on which the work was done): Molly1

COMMODITIES SOUGHT: Gold, Silver, Copper, Lead, Zinc

MINERAL INVENTORY MINFILE NUMBER(S), IF KNOWN: N/A

MINING DIVISION: Victoria

NTS/BCGS: 92C / 09

LATITUDE: 48 ° 52 ' 15 " LONGITUDE: 124 ° 04 ' 50 " (at centre of work)

OWNER(S):

1) Nava Resources Canada Inc. 2) _____

MAILING ADDRESS:

12339 57A Avenue

Surrey, BC, V3X 3H3

OPERATOR(S) [who paid for the work]:

1) Nava Resources Canada Inc. 2) _____

MAILING ADDRESS:

As above

PROPERTY GEOLOGY KEYWORDS (lithology, age, stratigraphy, structure, alteration, mineralization, size and attitude):

Sicker Group, McLaughlin Ridge Formation, volcanics, middle to upper Devonian, Kuroko, Polymetallic, volcanogenic, massive sulphide, VMS, gold, silver, copper, lead, zinc

REFERENCES TO PREVIOUS ASSESSMENT WORK AND ASSESSMENT REPORT NUMBERS:

Striker property (Utah Mines) - 17736, 14302, 15117, 13962

TYPE OF WORK IN THIS REPORT	EXTENT OF WORK (IN METRIC UNITS)	ON WHICH CLAIMS	PROJECT COSTS APPORTIONED (incl. support)
GEOLOGICAL (scale, area)			
Ground, mapping			
Photo interpretation			
GEOPHYSICAL (line-kilometres)			
Ground			
Magnetic			
Electromagnetic			
Induced Polarization			
Radiometric			
Seismic			
Other			
Airborne			
GEOCHEMICAL (number of samples analysed for...)			
Soil			
Silt			
Rock 36 elements		Molly1	\$1607.70
Other			
DRILLING (total metres; number of holes, size)			
Core			
Non-core			
RELATED TECHNICAL			
Sampling/assaying			
Petrographic			
Mineralographic			
Metallurgic			
PROSPECTING (scale, area) 1 : 10,000, 1.1 km roadcut		Molly1	\$2963.49
PREPARATORY / PHYSICAL			
Line/grid (kilometres)			
Topographic/Photogrammetric (scale, area)			
Legal surveys (scale, area)			
Road, local access (kilometres)/trail			
Trench (metres)			
Underground dev. (metres)			
Other			
TOTAL COST:			\$4571.19

Contents

Confirmation Page

Title Page and Summary

1	INTRODUCTION	1
2	LOCATION, ACCESS AND PHYSIOGRAPHY	1
3	MINERAL PROPERTY	1
4	GEOLOGY	1
5	LOCAL GEOLOGY	4
6	METALLOGENY / EXPLORATION TARGETS	5
7	HISTORY	5
8	SUMMARY OF WORK PERFORMED	5
9	REFERENCES CITED	6
10	STATEMENT OF QUALIFICATIONS.....	7
11	APPENDIX A: ROCK SAMPLE DESCRIPTIONS	8
12	APPENDIX B: LITHOGEOCHEMICAL ANALYSIS: CERTIFICATE AND RESULTS	10
13	APPENDIX C: STATEMENT OF EXPENDITURES	18

List of Figures

Figure 1	Molly1: Regional Location	2
Figure 2	Molly1: Claim Map	3
Figure 3	Molly1: Prospecting Map (with sample locations) (in pocket)	

1 Introduction

This assessment report covers prospecting and lithogeochemical sampling undertaken on the Molly1 Property on October 26, 2010 by Don Blackadar and Jag Sandhu. Molly1, comprising 20 units was staked by Nava Resources Canada Inc. on October 20, 2010.

The objective of this work was to complete a preliminary orientation of the claim and related access, and to prospect and sample the more accessible parts of the claim along access roads (road cuts). Forty six (46) samples were taken from outcrops along the main access road and analyzed for a 36 element suite, including Cu-Pb-Zn-Ag-Au-As-Ba, which is indicative of polymetallic Kuroko-type deposits, the primary exploration target on the property.

2 Location, Access and Physiography

The Molly1 claim is located in the Victoria Mining Division about 3 km north of the east end of the North Arm of Cowichan Lake (Figures 1 and 2). It is bounded to the east and north by Meade Creek (Figure 1). The claim is accessible via highway 18 (paved, all weather road) from the City of Duncan, approximately 26 km to the east and then north along the Meade Creek logging road, which runs along the west side of Meade Creek. This road, which is accessed from Highway 18 about 2.5 to 3.0 km west of the town of Lake Cowichan, transects the eastern end of the property before turning west along Meade Creek, just north of the claim boundary. The nearest population centers are the town of Lake Cowichan and the town of Youbou some 8 km west of the Meade Creek road turnoff.

Regionally, the area is dominated by rounded summits with steeply dipping topography on the south slope facing Cowichan Lake and to the east bordering Meade Creek. Elevations on the Molly1 claim range from 400 meters in the Meade Creek valley to over 900 meters in the south and west part of the property.

Although significant logging was carried out about 20 years ago, and there is some ongoing logging activity in the region, much of the area is covered by west-coast rainforest vegetation.

3 Mineral Property

The Molly1 property comprises the Molly1 mineral tenure, wholly owned by Nava Resources Canada Inc. (Figure 2).

<u>Tenure</u>	<u>Name</u>	<u>Area - ha</u>	<u>Cell Units</u>
836364	Molly1	424.96	20

4 Geology

The Molly1 claim is underlain by rocks of the mid-Paleozoic Sicker Group, which is prospective for Kuroko-type volcanogenic massive sulphide deposits rich in copper, lead, zinc, silver and gold.

Regionally, Sicker Group rocks contain a number of significant showings and existing or past-producing mines.

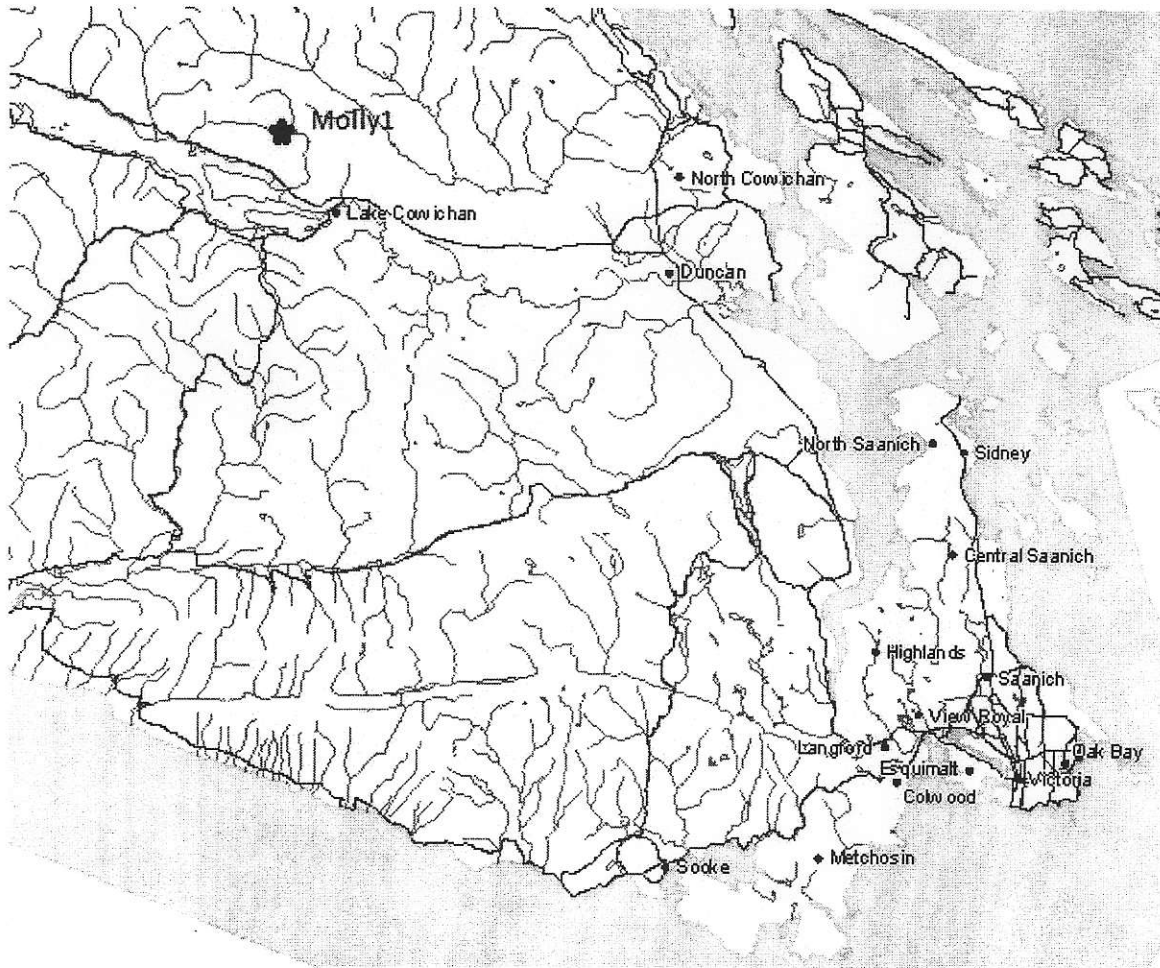


Figure 1

**Molly1 Claim
(836364)**

**Nava Resources Canada Inc.
Victoria MD, 92C / 09**

Regional Location

October 2010

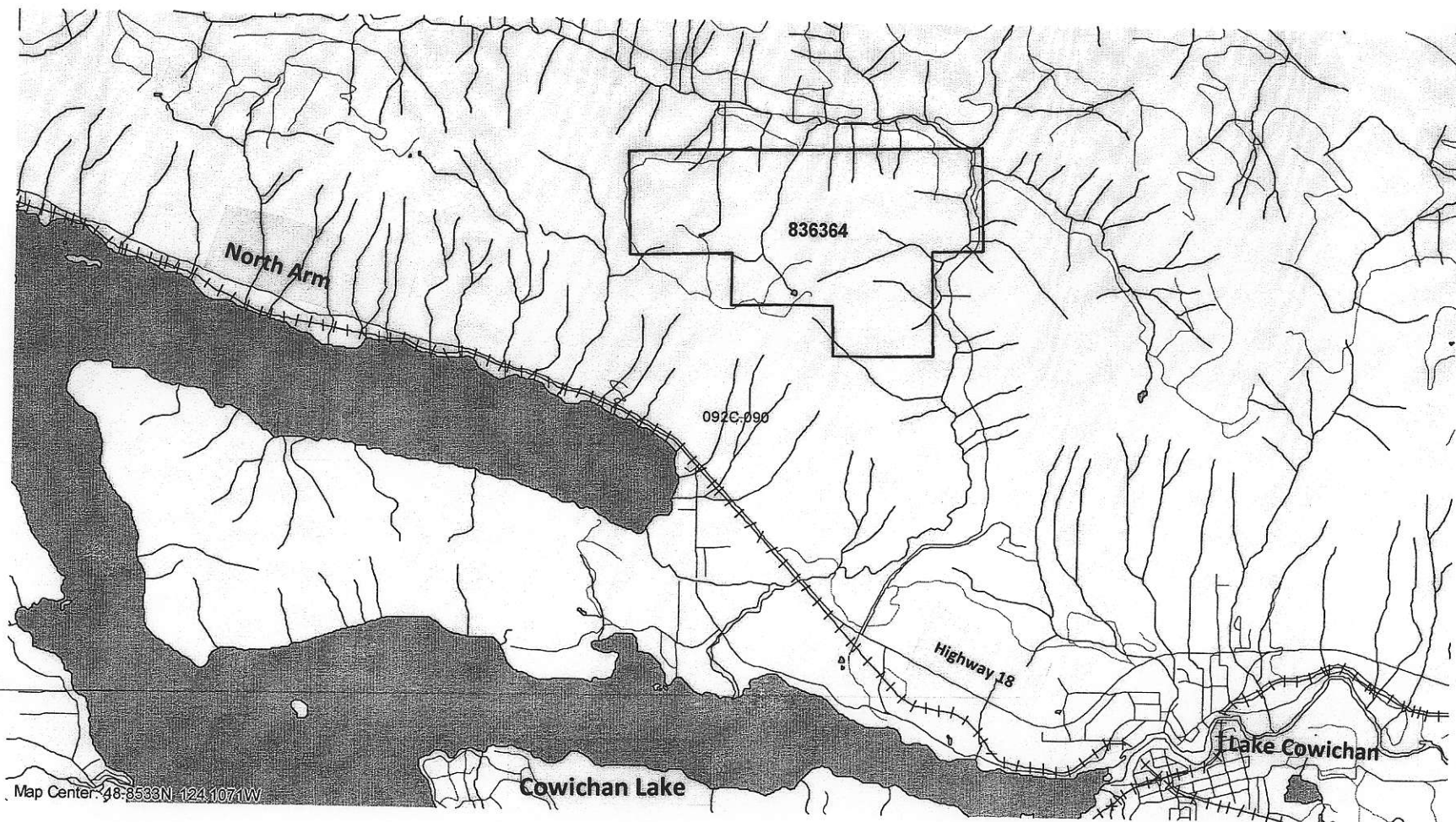


Figure 2

Molly1 Claim
(836364)
Nava Resources Canada Inc.
Victoria MD, 92C / 09

Claim Map
October 2010

The Sicker Group is exposed in four major structural uplifts in the southern half of Vancouver Island: 1) the Buttle Lake Uplift in the central part of the island, west of Courtenay, 2) the Bedington Uplift on the west coast near Tofino, 3) the Nanoose Uplift north of Nanaimo, and 4) the Cowichan Uplift, substantially the largest of the four, which extends in an arcuate northwest-trending belt between Saltspring Island and the area just east of Port Alberni, a distance of over 100 kilometers. The Molly1 claim is at the southeast end of this belt, part of a structural panel that extends along the north side of Cowichan Lake.

In general, the Sicker assemblage comprises three successive volcanic formations that are believed to represent an oceanic magmatic arc. The lowest member of the assemblage, the Duck Lake formation, comprises tholeiitic basalts transitioning upward into cal-calkaline lavas, which are thought to represent the oceanic crust basement and possibly an early state of Sicker arc magmatism. These rocks are overlain by the Nitnat Formation comprising mafic, submarine volcanic and volcanoclastic rocks, representing early island arc development. The uppermost member is the McLaughlin Ridge Formation (host to the Kuroko-type deposits), which represents a more advanced stage of arc development. These volcanics are more felsic (rhyolitic to dacitic) in composition with some andesitic assemblages. Rocks of the McLaughlin Ridge Formation are felt to be related to one or more major magmatic / volcanic centers.

In the Duncan-Cowichan area, the McLaughlin Ridge Formation is exposed in two major structural panels, separated by the Chemainus River Fault. To the north of the fault the volcanics are predominantly intermediate pyroclastics with common feldspar crystal-lapilli and heterolithic tuffs. In the Mount Sicker area, however, the formation includes a thick package of felsic quartz and feldspar crystal tuffs and dust tuffs, which are coeval with the granodiorite and quartz porphyry dykes of the Saltspring intrusive suite outcropping to the east and on Saltspring Island. These felsic rocks are considered to represent a major magmatic / volcanic center.

To the south of the Chemainus River Fault, the McLaughlin Ridge Formation comprises interbedded volcanoclastic sediments and pyroclastic rocks. In the vicinity of Cowichan Lake, these rocks have been described (Massey, 1002-3) as thickly bedded massive tuffite and lithic tuffite, heterolithic volcanic breccias and lapilli tuffs commonly mafic to intermediate in composition, and feldspar crystal tuffs and lapilli tuffs. Rocks in this area are generally poorly exposed and often limited to road cuts (Massey and Friday, 1986, p. 223).

5 Local Geology

The Cowichan Uplift is underlain by lithologies typical of the Wrangellia Terrane (Sicker / Buttle Lake Group, Vancouver Group and Bonanza Group). These rocks are intruded by gabbroic sills and dykes, which are coeval with the Karmutsen Formation and granodioritic rocks associated with the Early to Middle Jurassic Island Plutonic Suite. Older units are overlain unconformably by clastic sediments of the Upper Cretaceous Nanaimo Group. The Duncan-Cowichan area where the Molly1 Claim is located is dominated by northwesterly-trending high-angle reverse faults, which result in a series of west-northwest-trending panels.

As shown on MEMPR Geoscience Map 1991-2, the Molly1 claim is underlain primarily by a northwest-trending belt of mixed volcanic and volcanoclastic rocks of the McLaughlin Ridge Formation. These rocks are described as thickly bedded tuffite and lithic tuffite, feldspar-crystal tuff, heterolithic lapilli tuff

and breccia, rhyolite, dacite, laminated tuff, and chert. The southern part of the property is underlain by intermediate to mafic volcanics of the Nitnat formation. The Mount Hall Gabbro is exposed between the McLaughlin Ridge and Nitnat formations in the Meade Creek area.

6 Metallogeny / Exploration Targets

The Sicker Group is prospective for Kuroko-type massive sulphide deposits rich in copper-lead-zinc-silver and gold. The Sicker contains a number of significant showings and deposits hosted by felsic volcanoclastic rocks of the McLaughlin Ridge Formation or equivalents. The most significant occurrence is the Myra Falls Mine in the Buttle Lake Uplift. Deposits in the Cowichan Uplift are associated with felsic volcanic rocks in the Mount Sicker area, north of the Chemaius River Fault. These include the Lenora, Tyee and Richard III deposits on Mount Sicker and the Lara deposit, some 7 kilometres to the west along geologic strike.

Minfile records document a significant number and variety of mineral showings in the Cowichan Lake area. Though no mines are presently active, several small deposits have been worked in the past. Massey and Friday (1986) grouped the Cowichan mineral showings into the following categories: 1) volcanic, gold-bearing massive sulphides, 2) gold-bearing, pyrite chalcopyrite-quartz-carbonate veins along shears, 3) epithermal gold-silver deposits, 4) copper skarns, and 5) copper-molybdenum quartz veins.

7 History

The Mount Sicker deposits to the north of the Chemainus River represent the earliest success, being mined on a small scale in the late 1800s and again between 1942 and 1952 (Twin J Mine).

A review of minfile documentation demonstrates a long history of exploration in the Cowichan Lake area. Documented exploration on the Molly1 claim relates to the work performed by Utah Mines between 1985 and 1988 on the Striker claims, an extensive property underlain by the Sicker Group and extending along the entire north shore of Lake Cowichan.

In 2008, Nava Resources performed reconnaissance style prospecting on the North 1 and 2 claims about 2 km to the west of Molly1 along geologic strike. Assessment work was filed in 2008 and the claims were allowed to lapse in 2010.

8 Summary of Work Performed

Work performed comprised claim orientation (via 4 wheel drive vehicle), and prospecting and sampling for lithogeochemical analysis. The claim was accessed along the Meade Creek road, with an attempt to access the higher elevations on the property via the west-trending extension of the road north of the property. The attempt to reach the higher elevations was abandoned due to the poor condition of the road at that time (local washouts).

Prospecting and sampling activities were focused on the east side of the property, which includes more or less continuous outcrop exposure for more than 2 kms in road cuts along the Meade Creek road. Prospecting and sampling were performed over a distance of 1.1 km extending south from the north

boundary of the claim. Rocks exposed in this area are consistent with Map 1991-2. Much of the area prospected comprised a fairly uniform cross-section of grey, fine grained tuffites and cherty tuffites of the McLaughlin Ridge formation. These rocks are banded to thick bedded, and exhibit occasional quartz veining and carbonate stringers, and rare fine-grained, disseminated pyrite. Sandstones and siltstones of the Nanaimo Group (Benson Formation) were encountered at the extreme north end of the claim and along road cuts to the north. The southernmost sample (Mo-20) was an intermediate to mafic, fine grained to porphyritic intrusive, possibly representing a dyke related to the Mount Hall Gabbro.

A total of 46 grab samples were taken at intervals across the section and sent for multi-element geochemical analysis (36 element suite), which included the Kuroko indicator elements copper, lead, zinc, silver, gold, barium, and arsenic¹ Samples were sent to Acme Labs in Vancouver, crushed to 200 mesh and processed by Aqua Regia digestion ICP-MS analysis. The certificate of analysis and results are included in Appendix B. No significant anomalies were identified in the pathfinder suite (Cu-Pb-Zn-Ag-Au-Ba-As), though three samples (tuffite) demonstrated weakly anomalous barium concentrations.

9 References Cited


- Massey, N.W.D., 1992, "Geology and Mineral Resources of the Cowichan Lake Area", B.C. Ministry of Energy, Mines and Petroleum Resources Paper 1992-3.
- Massey, N.W.D, and Friday, S.J., 1986, "Geology of the Cowichan Lake Area, Vancouver Island", B.C. Ministry of Energy Mines and Petroleum Resources, Geological Fieldwork, Paper 1987-1.
- Massey, N.W.D., Friday, S.J., Tercier, P.E., Rubilee, V.J., and Potter, T.E., 1986-87, "Geology of the Cowichan Lake Area", B.C. Ministry of Energy Mines and Petroleum Resources Geoscience Map 1991-2 (1:50,000).

¹ Samples taken in close proximity to gauge local variations are labeled A, B, C following the sample number, as applicable.

10 Statement of Qualifications

I, Donald William Blackadar, do hereby certify that:

1. I am a non-practicing professional geologist (life time member APEGGA).
2. I hold a BSc (University of Calgary, 1975) and an MSc (University of Alberta, 1981) in Geology.
3. I practiced the profession of geology actively between 1975 and 1987.
4. My experience encompasses mineral exploration (B.C., Yukon, NW.T.), coal exploration (Alberta) and petroleum and natural gas exploration (Alberta).
5. I have been employed in the IT industry since 1990 and have spent the past 12 years as an independent technology consultant.
6. I am a director of Nava Resources Canada Inc.



D.W. Blackadar

11 Appendix A: Rock Sample Descriptions

Sample No.	Description
Mo-1	<u>Tuffite</u> , dark grey, very fine grained, weekly foliated. Minor disseminated fine grained pyrite.
Nanaimo Group	
Mo-2	<u>Siltstone</u> , dark grey, massive, light brown weathering.
Mo-2A	<u>Siltstone</u> , dark grey, thin to medium bedded, friable, light brown weathering.
Mo-3	<u>Sandstone / Grit</u> , coarse grained, poorly sorted, occasional grains up to 4 mm, very friable, light brown weathering.
McLaughlin Ridge	
Mo-3A	<u>Tuffite</u> , dark grey, fine grained, cherty, banded to medium bedded.
Mo-4	<u>Tuffite</u> , dark grey, fine grained, cherty, banded to medium bedded.
Mo-4A	<u>Tuffite</u> , dark grey, fine grained, cherty, banded to medium bedded.
Mo-5	<u>Tuffite</u> , fine grained, dark grey, banded to medium bedded, massive jointing, brown weathering.
Mo-5A	<u>Tuffite</u> , fine grained, dark grey, banded to medium bedded, massive jointing, brown weathering.
Mo-6	<u>Tuffite</u> , fine grained, dark grey, banded to medium bedded, massive jointing, brown weathering. Locally siliceous. Scattered carbonate stringers.
Mo-6A	<u>Tuffite</u> , fine grained, dark grey, banded to medium bedded, massive jointing, brown weathering. Locally siliceous. Scattered carbonate stringers.
Mo-6B	<u>Tuffite</u> , fine grained, dark grey, banded to medium bedded, massive jointing, brown weathering. Locally siliceous. Scattered carbonate stringers.
Mo-7	<u>Tuffite</u> , fine grained, dark grey, banded to thinly bedded.
Mo-7A	<u>Tuffite</u> , fine to medium grained, medium grey, bedded, siliceous.
Mo-8	<u>Cherty Tuffite</u> , grading locally into chert, dark grey to greenish grey, banded with alternating lighter and darker bands, beds up to 3 feet, conchoidal fracture.
Mo-8A	<u>Cherty Tuffite</u> , grading locally into chert, dark grey to greenish grey, banded with alternating lighter and darker bands, beds up to 3 feet, conchoidal fracture.
Mo-8B	<u>Cherty Tuffite</u> , grading locally into chert, dark grey to greenish grey, banded with alternating lighter and darker bands, beds up to 3 feet, conchoidal fracture.
Mo-8C	<u>Cherty Tuffite</u> , grading locally into chert, dark grey to greenish grey, banded with alternating lighter and darker bands, beds up to 3 feet, conchoidal fracture.
Mo-9	<u>Cherty Tuffite</u> , medium green, fine grained, massive, massive jointed, occasional narrow quartz veins up to 4 cms.
Mo-9A	<u>Cherty Tuffite</u> , medium green, fine grained, massive, massive jointed, occasional narrow quartz veins up to 4 cms.
Mo-10	<u>Cherty Tuffite</u> , medium green, fine grained, fine grained carbonate along joint planes. Local strong quartz veining.
Mo-10A	<u>Quartz Vein</u> (within cherty tuffite), coarse grained.
Mo-11	<u>Cherty Tuffite</u> , dark grey, massive bedded, massive jointed.

Assessment Report – Molly1 – October 2011

Sample No.	Description
Mo-11A	<u>Cherty Tuffite</u> , dark grey, massive bedded, massive jointed.
Mo-12	<u>Cherty Tuffite</u> , dark grey, fine grained, thick bedded with local thinly bedded, lighter coloured layers, minor quartz stringers.
Mo-12A	<u>Cherty Tuffite</u> , dark grey, fine grained, thick bedded with local thinly bedded, lighter coloured layers, minor quartz stringers.
Mo-12B	<u>Cherty Tuffite</u> , dark grey, fine grained, thick bedded with local thinly bedded, lighter coloured layers, minor quartz stringers.
Mo-13	<u>Tuffite</u> , dark grey, fine grained with interbedded chert (thin to medium bedded).
Mo-13A	<u>Tuffite</u> , dark grey, fine grained with interbedded chert (thin to medium bedded).
Mo-13B	<u>Chert</u> , dark grey, banded, massive jointed.
Mo-14	<u>Chert</u> , medium grey, medium bedded, rare carbonate along fractures, with fine grained pyrite.
Mo-14A	<u>Chert</u> , medium grey, medium bedded, rare carbonate along fractures, with fine grained pyrite.
Mo-15	<u>Chert</u> , light to medium grey, medium bedded.
Mo-15A	<u>Chert</u> , light to medium grey, medium bedded.
Mo-15B	<u>Chert</u> , light to medium grey, medium bedded.
Mo-16	<u>Tuffite</u> , dark greenish grey, massive with local thin bedding, locally cherty, trace disseminated fine grained pyrite.
Mo-16A	<u>Tuffite</u> , dark greenish grey, massive with local thin bedding, locally cherty, trace disseminated fine grained pyrite.
Mo-17	<u>Tuffite</u> , medium to dark grey, massive to medium bedded, locally cherty.
Mo-17A	<u>Tuffite</u> , medium to dark grey, massive to medium bedded, locally cherty.
Mo-18	<u>Chert</u> , medium to light grey, thin to medium bedded.
Mo-18A	<u>Chert</u> , medium to light grey, thin to medium bedded.
Mo-19	<u>Chert</u> , dark grey, predominantly thick bedded, local thin beds, occasional areas of strong quartz veining.
Mo-19A	<u>Chert</u> , with strong quartz veining (up to 2 cms).
Mount Hall Gabbro (?)	
Mo-20	<u>Gabbro</u> , dark green, fine to medium crystalline to weakly porphyritic with pyroxene phenocrysts, fresh.
Mo-20A	As above but more equi-granular.
Mo-20B	<u>Gabbro</u> , dark green, medium crystalline with pyroxene phenocrysts, fresh.

12 Appendix B: Lithochemical Analysis: Certificate and Results



1020 Cordova St. East Vancouver BC V6A 4A3 Canada

Acme Analytical Laboratories (Vancouver) Ltd.

www.acmelab.com

Client: **Nava Resources Inc.**
104 - 2636 Montrose Ave.
Abbotsford BC V2S 3T6 Canada

Submitted By: Jag Sandhu
Receiving Lab: Canada-Vancouver
Received: June 03, 2011
Report Date: June 17, 2011
Page: 1 of 3

CERTIFICATE OF ANALYSIS

VAN11002345.1

CLIENT JOB INFORMATION

Project: None Given
Shipment ID:
P.O. Number
Number of Samples: 46

SAMPLE PREPARATION AND ANALYTICAL PROCEDURES

Method Code	Number of Samples	Code Description	Test Wgt (g)	Report Status	Lab
R200-250	46	Crush, split and pulverize 250 g rock to 200 mesh			VAN
1DX3	46	1:1:1 Aqua Regia digestion ICP-MS analysis	30	Completed	VAN

SAMPLE DISPOSAL

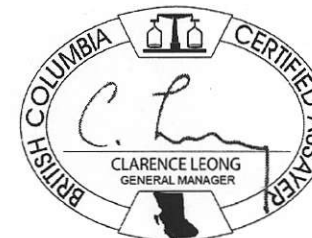
RTRN-PLP Return
RTRN-RJT Return

ADDITIONAL COMMENTS

Acme does not accept responsibility for samples left at the laboratory after 90 days without prior written instructions for sample storage or return.

Invoice To: Nava Resources Inc.
104 - 2636 Montrose Ave.
Abbotsford BC V2S 3T6
Canada

CC:



This report supersedes all previous preliminary and final reports with this file number dated prior to the date on this certificate. Signature indicates final approval; preliminary reports are unsigned and should be used for reference only. All results are considered the confidential property of the client. Acme assumes the liabilities for actual cost of analysis only.
*** asterisk indicates that an analytical result could not be provided due to unusually high levels of interference from other elements.



Acme Analytical Laboratories (Vancouver) Ltd.
 1020 Cordova St. East Vancouver BC V6A 4A3 Canada
 Phone (604) 253-3158 Fax (604) 253-1716

www.acmelab.com

Client: **Nava Resources Inc.**
 104 - 2636 Montrose Ave.
 Abbotsford BC V2S 3T6 Canada

Project: None Given
 Report Date: June 17, 2011

Page: 2 of 3 Part 1

CERTIFICATE OF ANALYSIS

VAN11002345.1

Method	Analyte	Unit	MDL	WGHT	1DX30	1DX30	1DX30	1DX30	1DX30	1DX30	1DX30	1DX30	1DX30	1DX30	1DX30	1DX30	1DX30	1DX30	1DX30	1DX30	1DX30		
				Wgt	Mo	Cu	Pb	Zn	Ag	Ni	Co	Mn	Fe	As	Au	Th	Sr	Cd	Sb	Bi	V	Ca	P
				kg	ppm	ppm	ppm	ppm	ppm	ppm	ppm	ppm	%	ppb	ppm	ppm	ppm	ppm	ppm	ppm	%	%	
MO - 1	Rock			0.33	0.3	16.3	1.5	48	<0.1	3.6	6.8	355	1.96	2.8	1.2	0.2	30	<0.1	0.1	<0.1	18	0.50	0.154
MO - 2	Rock			0.41	0.6	55.6	9.0	81	<0.1	44.4	13.8	527	4.88	14.2	<0.5	2.2	13	<0.1	0.4	0.2	77	0.16	0.057
MO - 2A	Rock			0.33	0.6	58.6	7.5	135	<0.1	58.9	25.7	618	4.73	14.0	1.0	1.8	31	0.1	0.4	0.2	84	1.08	0.097
MO - 3	Rock			0.16	0.4	36.2	4.1	58	<0.1	29.9	17.0	1207	3.91	11.8	5.3	0.9	19	<0.1	1.9	<0.1	99	0.18	0.092
MO - 3A	Rock			0.44	0.4	38.5	4.2	62	<0.1	32.1	17.8	1099	3.90	5.5	3.5	0.8	10	<0.1	3.1	<0.1	97	0.21	0.116
MO - 4	Rock			0.94	0.2	35.7	5.1	47	<0.1	10.4	6.7	378	2.25	7.7	6.1	0.6	10	0.2	<0.1	<0.1	31	0.21	0.045
MO - 4A	Rock			0.79	0.3	14.8	2.3	46	<0.1	5.9	3.4	358	2.00	4.4	1.1	0.7	9	0.3	<0.1	<0.1	13	0.22	0.082
MO - 5	Rock			0.66	4.0	22.9	3.3	52	<0.1	3.0	5.2	498	2.75	3.1	0.8	0.6	24	<0.1	0.2	<0.1	20	0.36	0.024
MO - 5A	Rock			0.38	0.9	19.6	1.8	67	<0.1	6.1	3.6	429	2.66	4.6	1.0	0.8	13	0.1	0.2	<0.1	16	0.19	0.018
MO - 6	Rock			0.37	0.2	19.6	3.3	63	<0.1	4.8	6.1	653	2.96	5.1	6.4	0.9	33	0.1	0.3	0.1	64	2.11	0.041
MO - 6A	Rock			0.50	0.4	22.3	2.0	84	<0.1	3.5	18.8	785	3.62	12.4	2.0	1.8	132	<0.1	1.1	<0.1	45	1.09	0.102
MO - 6B	Rock			0.29	0.2	45.5	3.5	72	0.1	5.5	9.0	628	3.48	5.6	14.6	0.5	30	<0.1	0.9	0.1	60	1.83	0.059
MO - 7	Rock			0.23	0.5	25.4	1.3	36	<0.1	5.3	5.0	386	2.21	2.7	5.4	0.3	15	<0.1	0.1	<0.1	52	0.31	0.023
MO - 7A	Rock			0.66	0.5	5.2	0.7	73	<0.1	3.4	16.9	759	3.35	5.6	1.3	1.6	105	<0.1	0.4	<0.1	40	1.03	0.100
MO - 8	Rock			0.17	0.6	30.5	1.6	56	<0.1	7.1	11.2	427	2.52	8.7	1.4	0.3	25	<0.1	<0.1	<0.1	41	0.40	0.045
MO - 8A	Rock			0.73	0.4	27.2	1.2	81	<0.1	5.0	9.3	636	3.28	5.4	11.9	0.2	18	<0.1	<0.1	<0.1	56	0.33	0.076
MO - 8B	Rock			0.54	0.3	23.8	4.6	55	<0.1	4.2	6.1	688	3.16	2.4	2.6	0.9	24	<0.1	0.5	<0.1	51	0.30	0.040
MO - 8C	Rock			0.85	0.2	69.8	3.1	80	<0.1	5.7	8.6	762	3.79	3.6	2.7	0.4	15	0.2	0.3	<0.1	69	0.34	0.051
MO - 9	Rock			0.35	0.2	40.3	3.8	74	<0.1	12.2	17.0	1142	3.07	3.2	1.5	0.5	28	<0.1	0.3	<0.1	49	0.45	0.030
MO - 9A	Rock			0.22	0.8	221.7	2.3	72	0.1	15.7	15.0	1110	3.03	4.8	0.6	0.4	20	0.2	0.2	<0.1	90	0.51	0.028
MO - 10	Rock			0.68	0.1	67.4	2.2	73	<0.1	15.7	22.7	1197	3.32	3.8	0.6	0.4	37	<0.1	0.2	<0.1	59	1.16	0.034
MO - 10A	Rock			0.62	0.2	7.7	0.6	4	<0.1	1.4	0.9	259	0.42	3.0	0.5	<0.1	23	<0.1	<0.1	<0.1	4	1.48	0.002
MO - 11	Rock			0.39	1.0	56.7	2.7	63	0.1	16.9	13.9	324	3.16	4.7	1.2	0.4	13	<0.1	0.3	0.2	72	0.37	0.035
MO - 11A	Rock			0.90	0.8	38.6	2.0	48	<0.1	11.5	9.0	244	2.29	3.2	1.0	0.4	13	<0.1	0.2	<0.1	60	0.36	0.019
MO - 12	Rock			0.35	0.3	26.8	0.9	57	<0.1	13.2	11.4	290	2.84	4.1	4.1	0.5	11	<0.1	0.1	<0.1	103	0.21	0.034
MO - 12A	Rock			0.64	0.4	48.8	1.1	58	<0.1	12.9	11.7	305	3.05	2.9	2.1	0.6	13	<0.1	<0.1	<0.1	103	0.23	0.034
MO - 12B	Rock			1.78	0.4	69.7	1.3	44	0.1	14.2	10.7	286	2.30	6.7	2.2	0.7	19	0.2	0.2	<0.1	116	0.30	0.016
MO - 13	Rock			0.05	4.7	25.5	1.2	58	<0.1	17.5	7.6	436	3.52	3.7	2.6	1.1	39	<0.1	0.1	<0.1	70	0.36	0.032
MO - 13A	Rock			0.28	1.3	36.8	1.3	67	<0.1	14.8	15.8	502	4.34	3.6	3.3	1.3	18	<0.1	0.1	<0.1	93	0.31	0.096
MO - 13B	Rock			0.26	0.9	29.6	1.1	57	<0.1	8.4	8.2	360	2.92	3.4	3.8	0.6	18	<0.1	0.1	<0.1	84	0.29	0.035

This report supersedes all previous preliminary and final reports with this file number dated prior to the date on this certificate. Signature indicates final approval; preliminary reports are unsigned and should be used for reference only.



Acme Analytical Laboratories (Vancouver) Ltd.
 1020 Cordova St. East Vancouver BC V6A 4A3 Canada
 Phone (604) 253-3158 Fax (604) 253-1716

Acme Analytical Laboratories (Vancouver) Ltd.

www.acmelab.com

Client: **Nava Resources Inc.**
 104 - 2636 Montrose Ave.
 Abbotsford BC V2S 3T6 Canada

Project: None Given
 Report Date: June 17, 2011

Page: 2 of 3 Part 2

CERTIFICATE OF ANALYSIS

VAN11002345.1

Method	Analyte	Unit	MDL	1DX30	1DX30	1DX30	1DX30	1DX30	1DX30	1DX30	1DX30	1DX30	1DX30	1DX30	1DX30	1DX30	1DX30			
				La	Cr	Mg	Ba	Ti	B	Al	Na	K	W	Hg	Sc	Tl	S	Ga	Se	Te
				ppm	ppm	%	ppm	%	ppm	%	%	ppm	ppm	ppm	ppm	%	ppm	ppm	ppm	
MO - 1	Rock			2	2	1.31	354	0.088	3	1.87	0.053	0.44	0.2	0.01	2.7	<0.1	<0.05	5	<0.5	<0.2
MO - 2	Rock			9	51	1.48	99	0.122	5	3.20	0.011	0.18	<0.1	0.13	8.0	<0.1	<0.05	9	<0.5	<0.2
MO - 2A	Rock			15	51	1.59	131	0.103	9	2.84	0.021	0.23	<0.1	0.15	8.4	<0.1	0.73	8	<0.5	<0.2
MO - 3	Rock			11	56	1.81	137	0.028	3	2.48	0.079	0.15	<0.1	0.13	5.8	<0.1	<0.05	8	<0.5	<0.2
MO - 3A	Rock			14	65	1.80	106	0.011	2	2.50	0.052	0.11	<0.1	0.16	5.5	<0.1	<0.05	8	<0.5	<0.2
MO - 4	Rock			5	11	0.78	191	0.059	2	1.31	0.042	0.12	<0.1	<0.01	2.6	<0.1	<0.05	4	<0.5	<0.2
MO - 4A	Rock			9	6	0.70	173	0.027	2	1.20	0.033	0.13	0.2	<0.01	2.0	<0.1	<0.05	4	<0.5	<0.2
MO - 5	Rock			3	5	1.12	305	0.091	3	1.84	0.043	0.23	<0.1	<0.01	4.2	<0.1	0.05	5	<0.5	<0.2
MO - 5A	Rock			5	4	1.21	264	0.017	2	1.79	0.021	0.27	<0.1	0.01	4.1	<0.1	<0.05	5	<0.5	<0.2
MO - 6	Rock			4	16	1.11	101	0.176	6	3.48	0.065	0.10	0.2	0.02	8.0	<0.1	<0.05	14	<0.5	<0.2
MO - 6A	Rock			6	4	1.44	51	0.120	3	2.52	0.055	0.05	0.2	0.03	2.7	<0.1	<0.05	6	<0.5	<0.2
MO - 6B	Rock			4	10	1.13	122	0.215	5	3.57	0.067	0.07	0.3	0.03	8.5	<0.1	<0.05	13	<0.5	<0.2
MO - 7	Rock			1	15	0.71	56	0.131	2	1.28	0.156	0.08	0.1	<0.01	4.8	<0.1	<0.05	5	<0.5	<0.2
MO - 7A	Rock			4	5	1.37	37	0.091	2	2.42	0.040	0.03	0.1	0.01	2.3	<0.1	<0.05	6	<0.5	<0.2
MO - 8	Rock			2	9	1.03	376	0.189	3	1.92	0.143	0.52	0.2	<0.01	8.6	<0.1	<0.05	7	<0.5	<0.2
MO - 8A	Rock			3	7	1.29	389	0.171	1	2.12	0.131	0.51	0.2	<0.01	7.3	<0.1	0.05	9	<0.5	<0.2
MO - 8B	Rock			3	7	1.26	57	0.133	1	1.93	0.177	0.06	0.2	<0.01	5.3	<0.1	<0.05	8	<0.5	<0.2
MO - 8C	Rock			3	10	1.55	137	0.189	2	2.41	0.095	0.14	0.2	0.02	7.4	<0.1	<0.05	12	<0.5	<0.2
MO - 9	Rock			3	10	1.50	206	0.207	3	2.36	0.062	0.22	<0.1	0.09	5.1	<0.1	<0.05	6	<0.5	<0.2
MO - 9A	Rock			2	18	1.32	127	0.165	1	1.90	0.110	0.04	0.2	0.02	5.7	<0.1	<0.05	6	<0.5	<0.2
MO - 10	Rock			3	9	1.63	204	0.173	3	2.54	0.075	0.23	0.1	0.03	5.4	<0.1	<0.05	6	<0.5	<0.2
MO - 10A	Rock			<1	5	0.05	45	0.003	2	0.18	0.010	0.07	<0.1	<0.01	0.4	<0.1	<0.05	<1	<0.5	<0.2
MO - 11	Rock			2	19	1.43	425	0.135	2	1.87	0.070	0.11	0.1	<0.01	6.4	<0.1	0.35	7	0.7	<0.2
MO - 11A	Rock			1	18	1.05	301	0.139	2	1.48	0.086	0.12	0.1	<0.01	6.3	<0.1	0.21	6	<0.5	<0.2
MO - 12	Rock			2	26	1.26	785	0.131	1	1.93	0.089	0.55	<0.1	<0.01	9.6	<0.1	0.08	7	<0.5	<0.2
MO - 12A	Rock			2	26	1.33	697	0.137	1	2.02	0.100	0.52	<0.1	<0.01	9.4	<0.1	0.16	7	<0.5	<0.2
MO - 12B	Rock			2	37	1.02	1226	0.147	<1	1.60	0.088	0.39	<0.1	<0.01	7.6	<0.1	0.06	8	<0.5	<0.2
MO - 13	Rock			3	29	1.61	888	0.173	3	2.86	0.259	0.63	0.1	<0.01	9.1	<0.1	<0.05	8	<0.5	<0.2
MO - 13A	Rock			5	35	2.12	411	0.153	1	2.89	0.083	0.60	0.1	<0.01	9.3	<0.1	0.19	9	<0.5	<0.2
MO - 13B	Rock			2	20	1.43	2041	0.153	1	2.24	0.099	0.56	<0.1	<0.01	8.4	<0.1	<0.05	8	<0.5	<0.2

This report supersedes all previous preliminary and final reports with this file number dated prior to the date on this certificate. Signature indicates final approval. preliminary reports are unsigned and should be used for reference only.



Acme Analytical Laboratories (Vancouver) Ltd.
 1020 Cordova St. East Vancouver BC V6A 4A3 Canada
 Phone (604) 253-3158 Fax (604) 253-1716

www.acmelab.com

Client: **Nava Resources Inc.**
 104 - 2636 Montrose Ave.
 Abbotsford BC V2S 3T6 Canada

Project: None Given
 Report Date: June 17, 2011

Page: 3 of 3 Part 1

CERTIFICATE OF ANALYSIS

VAN11002345.1

Method	Analyte	WGHT	1DX30	1DX30	1DX30	1DX30	1DX30	1DX30	1DX30	1DX30	1DX30	1DX30	1DX30	1DX30	1DX30	1DX30	1DX30	1DX30	1DX30	1DX30	1DX30
			Wgt	Mo	Cu	Pb	Zn	Ag	Ni	Co	Mn	Fe	As	Au	Th	Sr	Cd	Sb	Bi	V	Ca
Unit		kg	ppm	ppm	ppm	ppm	ppm	ppm	ppm	ppm	%	ppm	ppb	ppm	ppm	ppm	ppm	ppm	ppm	%	%
MDL		0.01	0.1	0.1	0.1	1	0.1	0.1	0.1	1	0.01	0.5	0.5	0.1	1	0.1	0.1	0.1	2	0.01	0.001
MO - 14	Rock	0.22	0.9	16.4	1.5	25	<0.1	4.2	2.3	182	1.61	3.4	2.8	0.5	7	<0.4	0.6	<0.1	29	0.07	0.010
MO - 14A	Rock	0.72	0.4	34.2	2.6	57	<0.1	5.1	3.9	383	3.54	19.2	17.3	0.5	13	0.1	1.2	<0.1	53	0.06	0.018
MO - 15	Rock	0.48	0.1	50.1	3.6	60	<0.1	16.8	9.5	509	3.58	10.5	4.1	1.3	5	0.1	0.8	<0.1	74	0.11	0.026
MO - 15A	Rock	0.70	0.1	26.0	3.0	60	<0.1	11.7	8.8	495	3.25	3.2	1.7	0.7	10	<0.1	0.2	<0.1	75	0.24	0.028
MO - 15B	Rock	0.33	0.2	38.5	2.3	52	<0.1	10.4	8.6	375	2.83	3.9	2.5	0.6	14	<0.1	0.4	0.2	67	0.54	0.088
MO - 16	Rock	0.35	0.1	31.0	0.8	67	<0.1	6.5	8.6	536	3.17	2.1	3.3	0.1	17	<0.1	0.1	<0.1	38	0.24	0.032
MO - 16A	Rock	0.27	0.4	30.1	0.3	53	<0.1	5.0	6.8	483	2.77	1.9	5.8	0.1	6	<0.1	<0.1	<0.1	30	0.15	0.016
MO - 17	Rock	0.66	<0.1	62.5	0.8	63	<0.1	9.8	18.5	499	4.13	2.1	14.4	<0.1	9	<0.1	0.1	<0.1	101	0.20	0.031
MO - 17A	Rock	0.69	0.1	28.5	0.6	53	<0.1	7.0	11.4	409	3.15	2.3	7.8	0.2	11	<0.1	<0.1	<0.1	75	0.19	0.011
MO - 18	Rock	0.30	<0.1	22.4	0.7	39	<0.1	5.1	6.3	184	1.61	2.6	4.3	0.3	7	<0.1	0.1	<0.1	15	0.13	0.024
MO - 18A	Rock	0.41	0.1	15.8	1.5	43	<0.1	2.2	3.2	134	1.17	2.3	6.8	0.3	7	<0.1	<0.1	<0.1	4	0.12	0.021
MO - 19	Rock	0.54	0.2	15.6	2.6	5	<0.1	2.6	1.3	49	0.43	3.3	0.7	0.3	1	<0.1	<0.1	<0.1	3	0.03	0.002
MO - 19A	Rock	0.31	0.5	20.8	1.9	26	<0.1	9.5	4.6	124	1.24	2.5	<0.5	0.8	2	<0.1	<0.1	<0.1	17	0.07	0.006
MO - 20	Rock	0.33	0.1	40.1	0.9	41	<0.1	23.5	16.7	387	1.94	3.2	7.6	0.3	50	<0.1	<0.1	<0.1	57	1.00	0.138
MO - 20A	Rock	0.67	0.2	102.2	0.6	34	<0.1	19.3	14.9	436	2.09	3.0	4.2	0.5	35	<0.1	<0.1	<0.1	75	1.20	0.153
MO - 20B	Rock	0.76	0.3	145.4	0.7	30	<0.1	21.5	13.7	370	1.73	1.7	12.8	0.4	26	<0.1	<0.1	<0.1	62	1.01	0.130

This report supersedes all previous preliminary and final reports with this file number dated prior to the date on this certificate. Signature indicates final approval, preliminary reports are unsigned and should be used for reference only.



Acme Analytical Laboratories (Vancouver) Ltd.
 1020 Cordova St. East Vancouver BC V6A 4A3 Canada
 Phone (604) 253-3158 Fax (604) 253-1716

www.acmelab.com

Client: **Nava Resources Inc.**
 104 - 2636 Montrose Ave.
 Abbotsford BC V2S 3T6 Canada

Project: None Given
 Report Date: June 17, 2011

Page: 3 of 3 Part 2

CERTIFICATE OF ANALYSIS

VAN11002345.1

Method	Analyte	Unit	MDL	1DX30	1DX30	1DX30	1DX30	1DX30	1DX30	1DX30	1DX30	1DX30	1DX30	1DX30	1DX30	1DX30	1DX30			
				La	Cr	Mg	Ba	Ti	B	Al	Na	K	W	Hg	Sc	Tl	S	Ga	Se	Te
				ppm	ppm	%	ppm	%	ppm	%	%	ppm	ppm	ppm	ppm	%	ppm	ppm	ppm	
				1	1	0.01	1	0.001	1	0.01	0.001	0.01	0.1	0.01	0.1	0.05	1	0.5	0.2	
MO - 14	Rock			2	16	0.63	119	0.027	1	0.94	0.038	0.07	<0.1	<0.01	2.8	<0.1	<0.05	3	<0.5	<0.2
MO - 14A	Rock			4	10	1.43	784	0.022	5	2.04	0.062	0.07	<0.1	0.02	5.2	<0.1	0.17	7	<0.5	<0.2
MO - 15	Rock			3	31	1.83	128	0.088	1	2.45	0.097	0.08	<0.1	0.03	6.5	<0.1	<0.05	9	<0.5	<0.2
MO - 15A	Rock			3	21	1.78	282	0.137	1	2.25	0.041	0.11	<0.1	<0.01	4.9	<0.1	<0.05	7	<0.5	<0.2
MO - 15B	Rock			4	22	1.45	511	0.146	2	2.01	0.048	0.10	0.1	0.01	6.4	<0.1	<0.05	8	<0.5	<0.2
MO - 16	Rock			<1	9	2.02	296	0.128	1	2.25	0.027	0.38	<0.1	0.02	2.1	<0.1	<0.05	6	<0.5	<0.2
MO - 16A	Rock			<1	8	1.70	196	0.105	2	1.91	0.017	0.31	<0.1	0.01	1.8	<0.1	0.06	5	<0.5	<0.2
MO - 17	Rock			<1	14	2.59	130	0.124	<1	2.68	0.027	0.18	<0.1	0.04	5.5	<0.1	0.10	8	<0.5	<0.2
MO - 17A	Rock			<1	10	2.07	152	0.107	<1	2.19	0.015	0.21	<0.1	0.02	5.1	<0.1	0.05	7	<0.5	<0.2
MO - 18	Rock			<1	5	0.95	147	0.085	<1	1.13	0.012	0.14	<0.1	0.01	1.9	<0.1	<0.05	3	<0.5	<0.2
MO - 18A	Rock			1	3	0.79	210	0.071	1	1.04	0.016	0.35	<0.1	0.01	1.5	<0.1	0.12	2	<0.5	<0.2
MO - 19	Rock			1	10	0.17	26	0.021	<1	0.21	0.002	0.04	<0.1	<0.01	0.4	<0.1	<0.05	<1	<0.5	<0.2
MO - 19A	Rock			2	14	1.05	22	0.048	<1	1.00	0.004	0.05	<0.1	<0.01	1.7	<0.1	<0.05	4	<0.5	<0.2
MO - 20	Rock			2	57	1.96	62	0.142	1	1.78	0.052	0.32	0.1	<0.01	2.8	<0.1	<0.05	5	<0.5	<0.2
MO - 20A	Rock			5	54	1.90	138	0.164	<1	1.79	0.092	0.60	<0.1	<0.01	3.2	<0.1	<0.05	5	<0.5	<0.2
MO - 20B	Rock			3	51	1.81	105	0.156	1	1.65	0.072	0.59	<0.1	<0.01	3.3	<0.1	<0.05	4	<0.5	<0.2

This report supersedes all previous preliminary and final reports with this file number dated prior to the date on this certificate. Signature indicates final approval; preliminary reports are unsigned and should be used for reference only.



Acme Analytical Laboratories (Vancouver) Ltd.

1020 Cordova St. East Vancouver BC V6A 4A3 Canada
 Phone (604) 253-3158 Fax (604) 253-1716

www.acmelab.com

Client: **Nava Resources Inc.**
 104 - 2636 Montrose Ave.
 Abbotsford BC V2S 3T6 Canada

Project: None Given
 Report Date: June 17, 2011

Page: 1 of 1 Part 1

QUALITY CONTROL REPORT

VAN11002345.1

Method	WGHT	1DX30	1DX30	1DX30	1DX30	1DX30	1DX30	1DX30	1DX30	1DX30	1DX30	1DX30	1DX30	1DX30	1DX30	1DX30	1DX30	1DX30	1DX30	1DX30	1DX30
Analyte	Wgt	Mo	Cu	Pb	Zn	Ag	Ni	Co	Mn	Fe	As	Au	Th	Sr	Cd	Sb	Bi	V	Ca	P	
Unit	kg	ppm	ppm	ppm	ppm	ppm	ppm	ppm	ppm	%	ppm	ppb	ppm	ppm	ppm	ppm	ppm	ppm	%	%	
MDL	0.01	0.1	0.1	0.1	1	0.1	0.1	0.1	1	0.01	0.5	0.5	0.1	1	0.1	0.1	0.1	2	0.01	0.001	
Pulp Duplicates																					
MO - 1	Rock	0.33	0.3	16.3	1.5	48	<0.1	3.6	6.8	355	1.96	2.8	1.2	0.2	30	<0.1	0.1	<0.1	18	0.50	0.154
REP MO - 1	QC		0.3	16.1	1.5	48	<0.1	3.3	6.5	349	1.92	3.2	1.8	0.3	28	<0.1	0.1	<0.1	17	0.47	0.152
MO - 19A	Rock	0.31	0.5	20.8	1.9	26	<0.1	9.5	4.6	124	1.24	2.5	<0.5	0.8	2	<0.1	<0.1	<0.1	17	0.07	0.006
REP MO - 19A	QC		0.6	20.7	2.5	28	<0.1	9.4	4.8	129	1.23	2.7	<0.5	0.7	3	<0.1	<0.1	<0.1	16	0.07	0.006
Core Reject Duplicates																					
MO - 10	Rock	0.68	0.1	67.4	2.2	73	<0.1	15.7	22.7	1197	3.32	3.8	0.6	0.4	37	<0.1	0.2	<0.1	59	1.16	0.034
DUP MO - 10	QC		0.1	73.9	2.2	77	<0.1	15.9	22.9	1191	3.37	3.9	<0.5	0.4	39	0.1	0.2	<0.1	62	1.22	0.036
Reference Materials																					
STD DS8	Standard		13.6	113.5	126.5	315	1.7	40.0	8.0	612	2.48	27.4	123.7	6.7	60	2.4	5.5	6.8	40	0.66	0.081
STD DS8	Standard		13.2	110.0	123.6	313	1.7	38.5	7.8	608	2.45	27.8	119.9	6.7	59	2.4	5.3	6.5	40	0.67	0.079
STD DS8	Standard		13.0	100.0	119.5	323	1.9	38.2	7.5	624	2.48	29.7	107.3	6.4	63	2.5	6.0	6.3	41	0.70	0.084
STD DS8	Standard		12.3	104.0	113.8	318	1.8	37.3	7.7	630	2.42	29.8	107.6	6.2	61	2.4	5.6	6.0	41	0.71	0.082
STD DS8 Expected			13.44	110	123	312	1.69	38.1	7.5	615	2.46	26	107	6.89	67.7	2.38	5.7	6.67	41.1	0.7	0.08
BLK	Blank		<0.1	<0.1	<0.1	<1	<0.1	<0.1	<0.1	<1	<0.01	<0.5	<0.5	<0.1	<1	<0.1	<0.1	<0.1	<2	<0.01	<0.001
BLK	Blank		<0.1	<0.1	<0.1	<1	<0.1	<0.1	<0.1	<1	<0.01	0.7	<0.5	<0.1	<1	<0.1	<0.1	<0.1	<2	<0.01	<0.001
Prep Wash																					
G1	Prep Blank		0.3	2.3	3.5	50	<0.1	4.9	4.7	606	2.02	1.4	1.2	6.0	71	<0.1	<0.1	0.1	37	0.52	0.083
G1	Prep Blank		0.2	2.1	3.0	49	<0.1	4.0	4.8	578	1.99	1.4	1.2	5.8	66	<0.1	<0.1	<0.1	34	0.48	0.080



Acme Analytical Laboratories (Vancouver) Ltd.

1020 Cordova St. East Vancouver BC V6A 4A3 Canada
Phone (604) 253-3158 Fax (604) 253-1716

www.acmelab.com

Client: **Nava Resources Inc.**
104 - 2636 Montrose Ave.
Abbotsford BC V2S 3T6 Canada

Project: None Given
Report Date: June 17, 2011

Page: 1 of 1 Part 2

QUALITY CONTROL REPORT

VAN11002345.1

Method	1DX30	1DX30	1DX30	1DX30	1DX30	1DX30	1DX30	1DX30	1DX30	1DX30	1DX30	1DX30	1DX30	1DX30	1DX30	1DX30	1DX30	1DX30
Analyte	La	Cr	Mg	Ba	Ti	B	Al	Na	K	W	Hg	Sc	Tl	S	Ga	Se	Te	
Unit	ppm	ppm	%	ppm	%	ppm	%	%	%	ppm	ppm	ppm	ppm	%	ppm	ppm	ppm	
MDL	1	1	0.01	1	0.001	1	0.01	0.001	0.01	0.1	0.01	0.1	0.1	0.05	1	0.5	0.2	
Pulp Duplicates																		
MO - 1	Rock	2	2	1.31	354	0.088	3	1.87	0.053	0.44	0.2	0.01	2.7	<0.1	<0.05	5	<0.5	<0.2
REP MO - 1	QC	2	2	1.28	344	0.079	3	1.80	0.050	0.42	0.2	0.01	2.4	<0.1	<0.05	5	<0.5	<0.2
MO - 19A	Rock	2	14	1.05	22	0.048	<1	1.00	0.004	0.05	<0.1	<0.01	1.7	<0.1	<0.05	4	<0.5	<0.2
REP MO - 19A	QC	2	14	1.05	23	0.048	<1	1.02	0.004	0.04	<0.1	<0.01	1.7	<0.1	<0.05	4	<0.5	<0.2
Core Reject Duplicates																		
MO - 10	Rock	3	9	1.63	204	0.173	3	2.54	0.075	0.23	0.1	0.03	5.4	<0.1	<0.05	6	<0.5	<0.2
DUP MO - 10	QC	3	9	1.62	208	0.170	3	2.60	0.078	0.23	0.1	0.02	5.3	<0.1	<0.05	6	<0.5	<0.2
Reference Materials																		
STD DS8	Standard	13	122	0.60	270	0.111	3	0.89	0.085	0.39	3.3	0.19	1.9	5.9	0.16	5	5.3	5.1
STD DS8	Standard	13	118	0.59	259	0.112	3	0.90	0.090	0.40	3.2	0.20	1.9	5.7	0.16	5	5.2	4.8
STD DS8	Standard	13	111	0.62	269	0.110	2	0.89	0.086	0.44	3.2	0.21	2.1	5.8	0.16	5	5.5	5.8
STD DS8	Standard	14	114	0.61	267	0.109	2	0.91	0.086	0.38	2.9	0.19	2.0	5.6	0.16	5	5.3	5.9
STD DS8 Expected		14.6	115	0.6045	279	0.113	2.6	0.93	0.0883	0.41	3	0.192	2.3	5.4	0.1679	4.7	5.23	5
BLK	Blank	<1	<1	<0.01	<1	<0.001	<1	<0.01	<0.001	<0.01	<0.1	<0.01	<0.1	<0.1	<0.05	<1	<0.5	<0.2
BLK	Blank	<1	<1	<0.01	<1	<0.001	<1	<0.01	<0.001	<0.01	<0.1	<0.01	<0.1	<0.1	<0.05	<1	<0.5	<0.2
Prep Wash																		
G1	Prep Blank	11	11	0.58	240	0.131	2	1.16	0.140	0.55	<0.1	<0.01	2.8	0.4	<0.05	6	<0.5	<0.2
G1	Prep Blank	11	8	0.56	219	0.118	1	1.04	0.108	0.52	<0.1	<0.01	2.3	0.4	<0.05	5	<0.5	<0.2

13 Appendix C: Statement of Expenditures

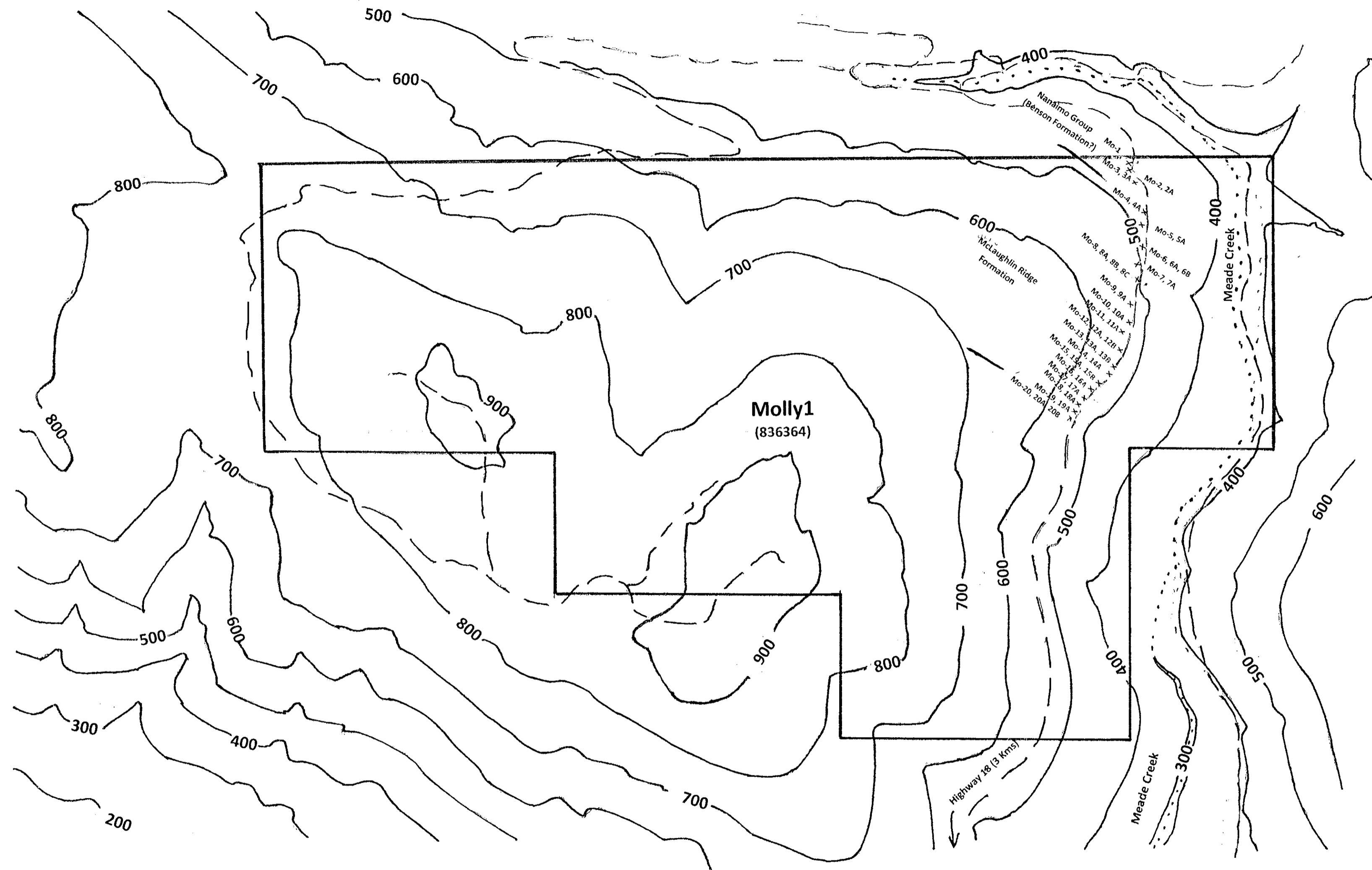
Exploration Work type	Comment	Days		Totals
Personnel (Name)* / Position	Field Days (list actual days)	Days	Rate	Subtotal*
Don Blackadar, Director	Oct 26 13 hours x \$30 per hour	1	\$390.00	\$390.00
Jag Sandhu, CEO, President	Oct 26 13 hours x \$30 per hour	1	\$390.00	\$390.00
			\$0.00	\$0.00
			\$0.00	\$0.00
			\$0.00	\$0.00
			\$0.00	\$0.00
			\$780.00	\$780.00
Office Studies	List Personnel (note - Office only, do not include field days)			
Literature search	8 hours @ \$30		\$30.00	\$240.00
Database compilation			\$30.00	\$0.00
Computer modelling			\$0.00	\$0.00
Reprocessing of data			\$0.00	\$0.00
General research	10 hours @ \$30		\$30.00	\$300.00
Report preparation	30 hours @ \$30		\$30.00	\$900.00
Other (specify)	land titles search / S19			\$63.30
			\$1,503.30	\$1,503.30
Airborne Exploration Surveys	Line Kilometres / Enter total invoiced amount			
Aeromagnetics			\$0.00	\$0.00
Radiometrics			\$0.00	\$0.00
Electromagnetics			\$0.00	\$0.00
Gravity			\$0.00	\$0.00
Digital terrain modelling			\$0.00	\$0.00
Other (specify)			\$0.00	\$0.00
			\$0.00	\$0.00
Remote Sensing	Area in Hectares / Enter total invoiced amount or list personnel			
Aerial photography			\$0.00	\$0.00
LANDSAT			\$0.00	\$0.00
Other (specify)			\$0.00	\$0.00
			\$0.00	\$0.00
Ground Exploration Surveys	Area in Hectares/List Personnel			
Geological mapping				
Regional				<i>note: expenditures here</i>
Reconnaissance				<i>should be captured in Personnel</i>
Prospect	2 km roadcut / exposed outcrop			<i>field expenditures above</i>
Underground				
Trenches				\$0.00
			\$0.00	\$0.00
Ground geophysics	Line Kilometres / Enter total amount invoiced list personnel			
Radiometrics				
Magnetics				
Gravity				
Digital terrain modelling				
Electromagnetics				<i>note: expenditures for your crew in the field</i>
SP/AP/EP				<i>should be captured above in Personnel</i>
IP				<i>field expenditures above</i>
AMT/CSAMT				
Resistivity				
Complex resistivity				
Seismic reflection				
Seismic refraction				

Well logging	Define by total length				
Geophysical interpretation					
Petrophysics					
Other (specify)					
				\$0.00	\$0.00
Geochemical Surveying	Number of Samples	No.	Rate	Subtotal	
Drill (cuttings, core, etc.)			\$0.00	\$0.00	
Stream sediment			\$0.00	\$0.00	
Soil	<i>note: Multi-element lithogeochem</i>		\$0.00	\$0.00	
Rock	<i>46 samples at \$34.95 per sample</i>		\$34.95	\$1,607.70	
Water			\$0.00	\$0.00	
Biogeochemistry			\$0.00	\$0.00	
Whole rock			\$0.00	\$0.00	
Petrology			\$0.00	\$0.00	
Other (specify)			\$0.00	\$0.00	
				\$1,607.70	\$1,607.70
Drilling	No. of Holes, Size of Core and Metres	No.	Rate	Subtotal	
Diamond			\$0.00	\$0.00	
Reverse circulation (RC)			\$0.00	\$0.00	
Rotary air blast (RAB)			\$0.00	\$0.00	
Other (specify)			\$0.00	\$0.00	
				\$0.00	\$0.00
Other Operations	Clarify	No.	Rate	Subtotal	
Trenching			\$0.00	\$0.00	
Bulk sampling			\$0.00	\$0.00	
Underground development			\$0.00	\$0.00	
Other (specify)			\$0.00	\$0.00	
				\$0.00	\$0.00
Reclamation	Clarify	No.	Rate	Subtotal	
After drilling			\$0.00	\$0.00	
Monitoring			\$0.00	\$0.00	
Other (specify)			\$0.00	\$0.00	
				\$0.00	\$0.00
Transportation		No.	Rate	Subtotal	
Airfare			\$0.00	\$0.00	
Taxi			\$0.00	\$0.00	
truck rental			\$0.00	\$0.00	
kilometers	130 kms (Don), 260kms (Jag) =		\$0.00	\$202.80	
ATV	390 km @ \$0.52		\$0.00	\$0.00	
fuel			\$0.00	\$0.00	
Helicopter (hours)			\$0.00	\$0.00	
Fuel (litres/hour)			\$0.00	\$0.00	
Other	ferry (2) - return			\$178.40	
				\$381.20	\$381.20
Accommodation & Food	Rates per day				
Hotel			\$0.00	\$0.00	
Camp			\$0.00	\$0.00	
Meals	meals and coffee		\$0.00	\$246.60	
				\$246.60	\$246.60
Miscellaneous					
Telephone			\$0.00	\$0.00	

Other (Specify)				
			\$0.00	\$0.00
Equipment Rentals				
Field Gear (Specify)	flagging tapes, overlays, markers	\$0.00	\$17.99	
Other (Specify)	maps		\$34.40	
			\$52.39	\$52.39
Freight, rock samples				
		\$0.00	\$0.00	
		\$0.00	\$0.00	
			\$0.00	\$0.00
TOTAL Expenditures				\$4,571.19

Molly1 Lithochemical Results 2010							
No.	Sample	Cu PPM	Pb PPM	Zn PPM	Ag PPM	Au PPB	As PPM
1	MO-1	16.3	1.5	48	<0.1	1.2	354
2	MO-2	55.6	9.0	81	<0.1	<0.5	99
3	MO-2A	58.6	7.5	135	<0.1	1.0	131
4	MO-3	36.2	4.1	58	<0.1	5.3	137
5	MO-3A	38.5	4.2	62	<0.1	3.5	106
6	MO-4	35.7	5.1	47	<0.1	6.1	191
7	MO-4A	14.8	2.3	46	<0.1	1.1	173
8	MO-5	22.9	3.3	52	<0.1	0.8	305
9	MO-5A	19.6	1.8	67	<0.1	1.0	264
10	MO-6	19.6	3.3	63	<0.1	6.4	101
11	MO-6A	22.3	2.0	84	<0.1	2.0	51
12	MO-6B	45.5	3.5	72	0.1	14.6	122
13	MO-7	75.4	1.3	36	<0.1	5.4	56
14	MO-7A	5.2	0.7	73	<0.1	1.3	37
15	MO-8	30.5	1.6	56	<0.1	1.4	376
16	MO-8A	27.2	1.2	81	<0.1	11.9	389
17	MO-8B	23.8	4.6	55	<0.1	2.6	57
18	MO-8C	69.8	3.1	80	<0.1	2.7	137
19	MO-9	40.3	3.8	74	<0.1	1.5	206
20	MO-9A	221.7	2.3	72	0.1	0.6	127
21	MO-10	67.4	2.2	73	<0.1	0.6	204
22	MO-10A	7.7	0.6	4	<0.1	0.5	45
23	MO-11	56.7	2.7	63	0.1	1.2	425
24	MO-11A	38.6	2.0	48	<0.1	1.0	301

Molly1 Lithochemical Results 2010							
No.	Sample	Cu PPM	Pb PPM	Zn PPM	Ag PPM	Au PPB	As PPM
27	MO-12B	69.7	1.3	44	0.1	2.2	1226
28	MO-13	25.5	1.2	50	<0.1	2.6	888
29	MO-13A	36.8	1.3	67	<0.1	3.3	411
30	MO-13B	29.6	1.1	57	<0.1	3.8	2041
31	MO-14	16.4	1.5	25	<0.1	2.8	119
32	MO-14A	34.2	2.6	57	<0.1	17.3	784
33	MO-15	50.1	3.6	60	<0.1	4.1	128
34	MO-15A	26.0	3.0	60	<0.1	1.7	282
35	MO-15B	38.5	2.3	52	<0.1	2.5	511
36	MO-16	31.0	0.8	67	<0.1	3.3	296
37	MO-16A	30.1	0.3	53	<0.1	5.8	196
38	MO-17	62.5	0.8	63	<0.1	14.4	130
39	MO-17A	28.5	0.6	53	<0.1	7.8	152
40	MO-18	22.4	0.7	39	<0.1	4.3	147
41	MO-18A	15.8	1.5	43	<0.1	6.8	210
42	MO-19	15.6	2.6	5	<0.1	0.7	26
43	MO-19A	20.8	1.9	26	<0.1	<0.5	22
44	MO-20	40.1	0.9	41	<0.1	7.6	62
45	MO-20A	102.2	0.6	34	<0.1	4.2	138
46	MO-20B	145.4	0.7	30	<0.1	12.8	105



300 — Elevation: 100 m intervals
 — — — — — Logging Road
 x — Rock Sample

Molly1 Claim
 (836364)
 Nava Resources Canada Inc.
 Victoria MD, 92C / 09
Prospecting Map
 October, 2010
 Scale 1 : 10,000