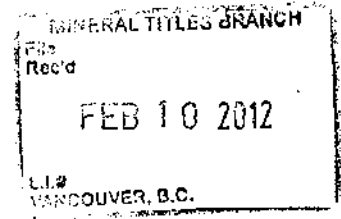


PROSPECTING REPORT



PERL Claim

Tenure Number  
594435  
Event Number  
5125567

BC Geological Survey  
Assessment Report  
32756

New Westminster Mining Division

BCGS Location  
92H.044

Coordinates (Centre)  
49 deg 28 min 59 sec North  
121 deg 13 min 56 sec West

Owner/Operator/Author  
Rick Czerny

Report Date  
February 9, 2012

32,756

GEOLOGICAL SURVEY BRANCH  
ASSESSMENT REPORT

## TABLE OF CONTENTS

Page 1...	Table of Contents
Page 2...	Property Access and Description Property Geology and History Work Completed
Page 3...	Assay Samples Conclusions References
Page 4...	Tenure renewal (copy)
Page 5...	Qualifications Statement of Costs Declaration
Page 6...	Map 1, Overview of claim (Google)
Page 7...	Map 2, Claim map
Page 8...	Map 3, Mineral Titles map (Broken Hill showing)
Page 9/10...	Appendix, Certificate of Analysis

## PROPERTY ACCESS AND DESCRIPTION

The PERL claim (claim# 594435) lies in the Cascade Mountain area, approximately 24 km NE of Hope. Access is north on the Coquihalla Highway to the Carolin mine exit, east on the Dewdney forest road, north of Dewdney creek.

The PERL claim encompasses 272.85 hectares in 13 cells. Elevation runs from approximately 250 metres around Dewdney creek to 920 metres (Map 2). The area has been logged in recent years. Few stands of trees remain, particularly on the steeper slopes and there is an abundance of overburden, thick short brush, thick moss and logging slash, making extensive prospecting by an individual difficult. In spite of the ground cover, logging roads have exposed several rock outcrops which have been previously identified.

## PROPERTY GEOLOGY AND HISTORY

The PERL claim lies just NE of the East Hozameen fault in the Coast Crystalline belt of the Bridge River terrane. The host rock is predominantly sedimentary (mudstone/siltstone) of the Ladner group, and is Middle to Lower Jurassic in age. The Ladner group in this area overlies older greenstones (Coquihalla serpentine) and has undergone low grade metamorphism, exhibiting a slaty appearance (Ref. 1) Exposed bedrock has weathered to a rust brown. Random quartz veining exists from a few millimeters to several centimeters in width along the exposed areas of sedimentary rock, and hosts minor amounts of pyrite, arsenopyrite, pyrrhotite and possible galena. The strike of the bedding in this area is between 310 and 330 degrees, dipping to the south from 40 to 75 degrees. This direction coincides with the general trend of the area in which the Emancipation, Carolin and Aurum mines are located. The PERL claim area has undergone exploration off and on since the early 1900's. It has been previously known as the King group and most recently it includes the showing known as Broken Hill (Ref 2). The commodities of the area include gold and silver.

## WORK COMPLETED

Between August 1, 2011 and September 1, 2012 several days were spent looking for the Broken Hill showing. Using GPS it was located on a steep, precipitous slope. The area was covered in very deep moss and lichen with quartz float alerting me to a massive outcrop measuring about 5 square metres. 3 predominantly quartz specimens were taken from within the 5 meter area and are marked WP44/1, WP44/2, WP44/3. The specimens were taken to Acme Labs at 1020 Cordova St. Vancouver for assay. Analysis consisted of 1DX2 36 element Aqua Regia digestion ICP-MS of 15 gram samples. Specific elements of interest are gold and silver, however other commodities should not be ruled out if assay values show any significance.

## ASSAY SAMPLES

Sample	Location	Description
WP44/1	49 deg 28 min 58.2 sec N 121 deg 14 min 17.9 sec W	Quartz with Pyrite/Arsenopyrite
WP44/2	49 deg 28 min 58.2 sec N 121 deg 14 min 17.9 sec W	Quartz, iron stained
WP44/3	49 deg 28 min 58.2 sec N 121 deg 14 min 17.9 sec W	Quartz with Pyrite

Specimen WP44/1 was chipped from the above location, specimen WP44/2 and WP44/3 were taken from the float of that location.  
Assay results are in Appendix.

## CONCLUSIONS

The Broken Hill showing is in a precipitous location, but does warrant further, more extensive examination. The geology of the Hozameen fault and the history of the area shows that further potential does exist. Only minor surface exploration has been done in the past few years, the area however, would benefit from a more structured and in-depth exploration program.

## REFERENCES

- Ref 1 – Geological Survey of Canada  
Geology of Hope B.C.  
Map 41-1989  
J.W.H. Monger
- Ref 2 – BC Geological Survey,  
MINFILE Detail Report  
# 09HSW035  
Broken Hill, King

## QUALIFICATIONS

### BCIT

Mine 1003... Introduction to Prospecting and Exploration 1  
Mine 1004... Introduction to Prospecting and Exploration 2  
Mine 1005... Prospecting and Exploration Field School  
Field Prospecting... 6 years

## STATEMENT of COSTS

Labour...	16 hours @ \$35/hour...	\$560.00
Food...	2 days @ \$40/day...	\$ 80.00
Fuel...	2 days @ \$25/day...	\$ 50.00
Assays...	3 \$144.04...	\$144.04
(incl. HST and surcharge)		
PAC withdrawal...	\$157.37...	\$157.37
Report preparation...	\$100.00...	\$100.00
Total...		\$1091.41

## DECLARATION

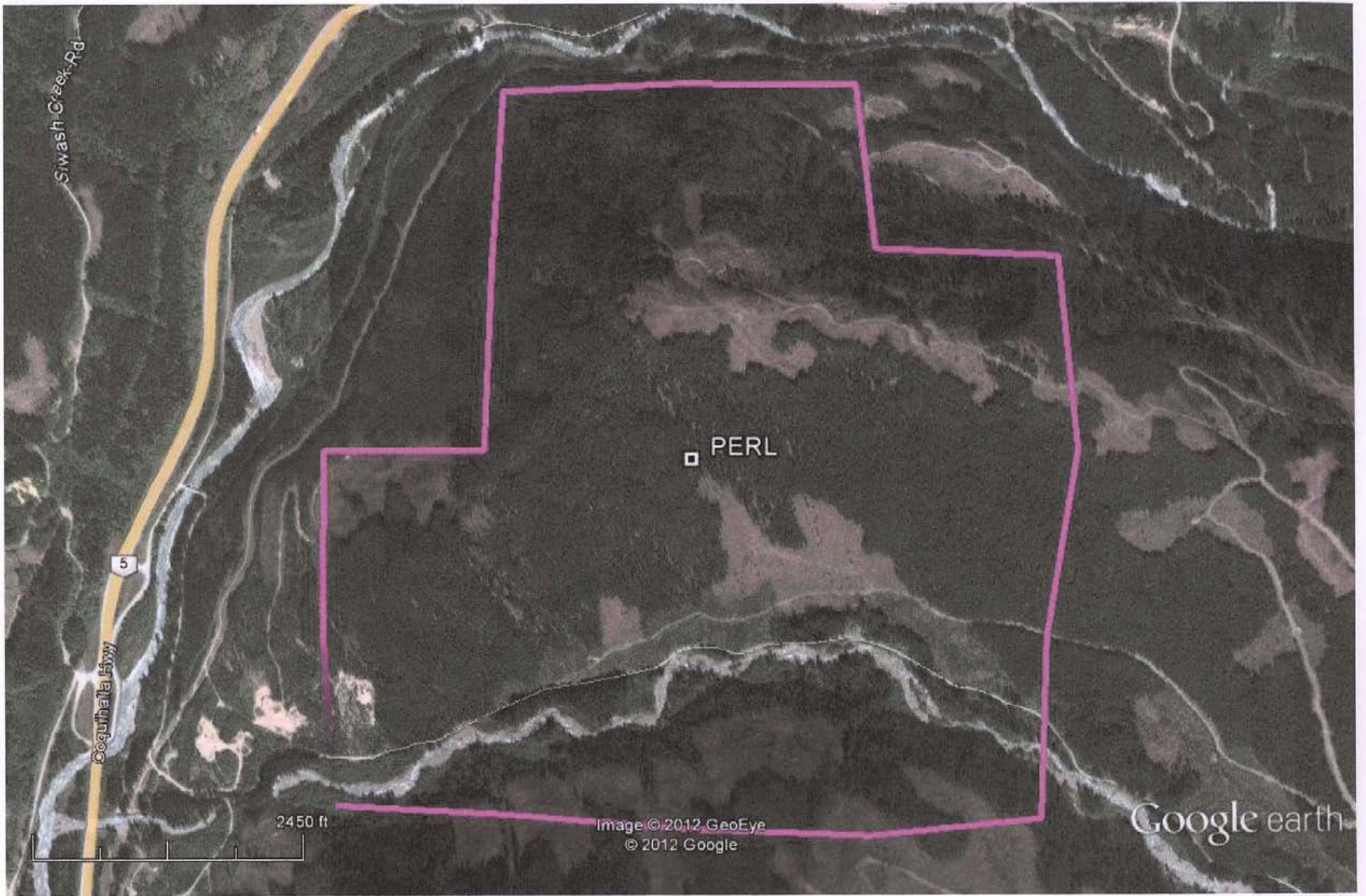
I, Rick Czerny, declare that the above is true and accurate to the best of my knowledge.



Rick Czerny

February 9, 2012

MAPS



Google earth

miles  
km





# PERL Claim Map

**Mineral Titles Layers**

- PERL Tenure
- All Mineral Tenures

**Topographic Layers**

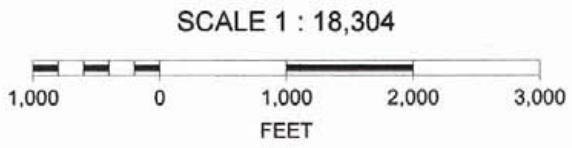
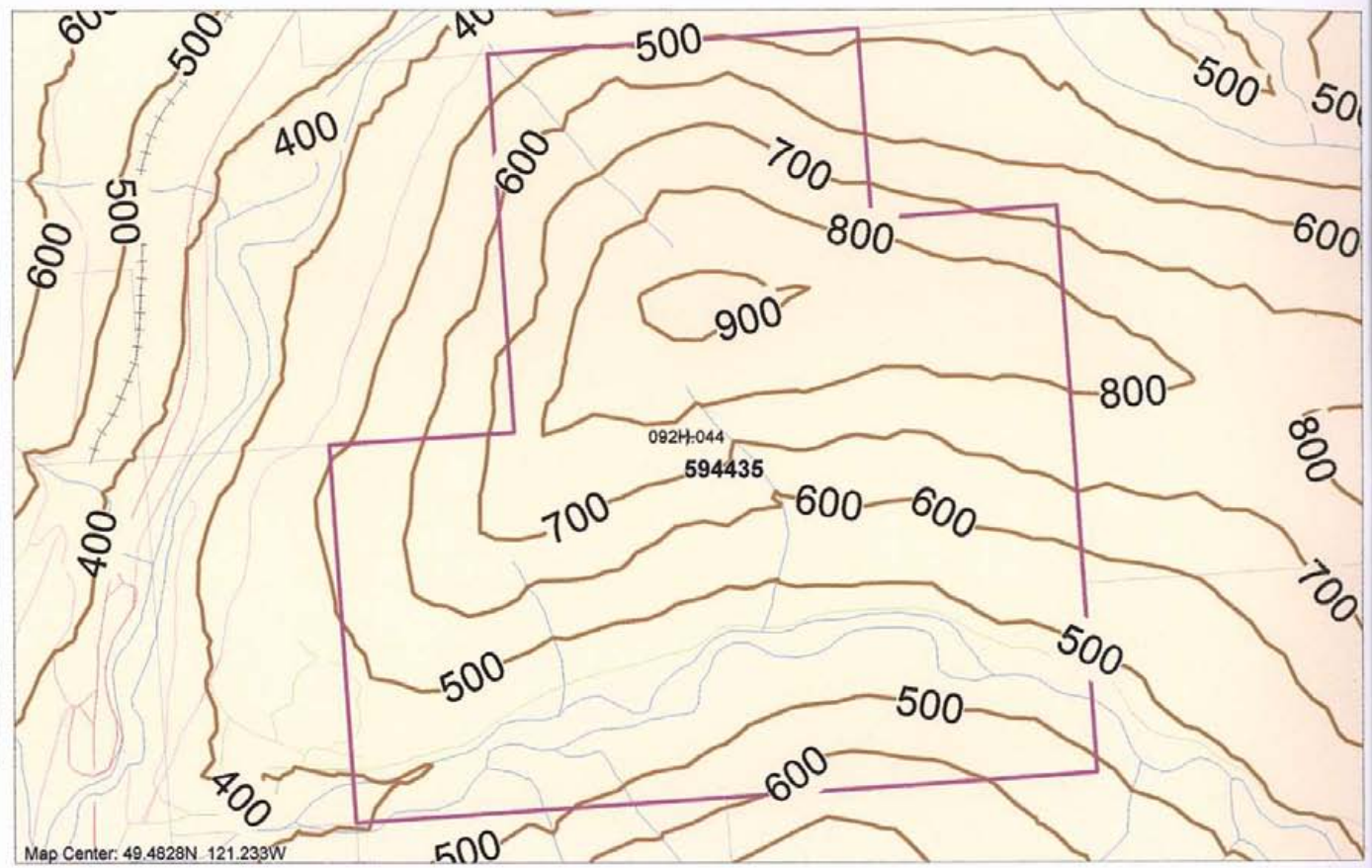
- Railways 1:20K
- Roads 1:20K
  - Gravel Road
  - Paved Road
  - Rough Road
- Contours with Labels 1:20K (<50K)
- Lakes 1:20K
- Rivers 1:20K

**Grid Layers**

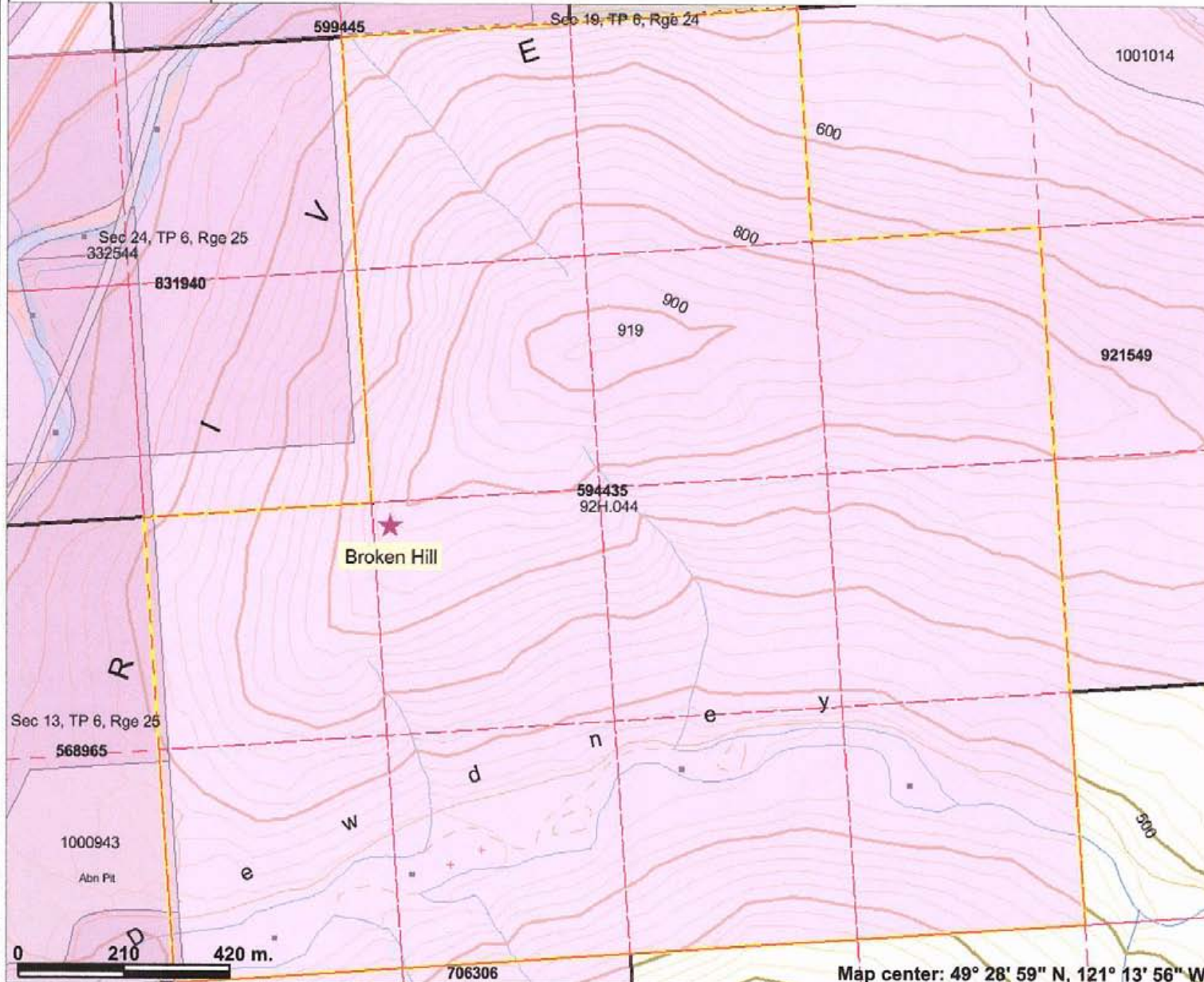
- Grid 1:20K - labels
- Grid 1:20K - outline

**BC Border Layers**

- BC Border 1:50K







### Legend

- Indian Reserves
- National Parks
- Conservancy Areas
- Parks
- Federal Transfer Lands
- MTO Grid (MTO)
- Mineral Tenure (current)
- Mineral Claim
- Mineral Lease
- Mineral Reserves (current)
- Placer Claim Designation
- Placer Lease Designation
- No Staking Reserve
- Conditional Reserve
- Release Required Reserve
- Surface Restriction
- Recreation Area
- Others
- First Nations Treaty Related Lands
- First Nations Treaty Lands
- Integrated Cadastral Fabric
- Survey Parcels
- BCGS Grid
- Contours (TRIM)
  - Contour - Index
  - Contour - Index.Indefinite
  - Contour - Index.Depression
  - Contour - Index.Depression Indefinite
  - Contour - Intermediate
  - Contour - Intermediate.Indefinite
  - Contour - Intermediate.Depression

Scale: 1:12,000

This map is a user generated static output from an Internet mapping site and is for general reference only. Data layers that appear on this map may or may not be accurate, current, or otherwise reliable. THIS MAP IS NOT TO BE USED FOR NAVIGATION.

## APPENDIX



# AcmeLabs

Acme Analytical Laboratories (Vancouver) Ltd.

1020 Cordova St. East Vancouver BC V6A 4A3 Canada  
 Phone (604) 253-3158 Fax (604) 253-1716

www.acmelab.com

**Client:** Czerny, Rick  
 Box 125  
 9083 Gay Street  
 Fort Langley BC V1M 2R5 Canada

**Project:** PERL  
**Report Date:** October 23, 2011

**Page:** 2 of 2 **Part** 1

## CERTIFICATE OF ANALYSIS

VAN11005277.1

Method	WGHT	1DX15	1DX15	1DX15	1DX15	1DX15	1DX15	1DX15	1DX15	1DX15	1DX15	1DX15	1DX15	1DX15	1DX15	1DX15	1DX15	1DX15	1DX15	1DX15	
Analyte	Wgt	Mo	Cu	Pb	Zn	Ag	Ni	Co	Mn	Fe	As	Au	Th	Sr	Cd	Sb	Bi	V	Ca	P	
Unit	kg	ppm	ppm	ppm	ppm	ppm	ppm	ppm	ppm	%	ppm	ppb	ppm	ppm	ppm	ppm	ppm	ppm	%	%	
MDL	0.01	0.1	0.1	0.1	1	0.1	0.1	0.1	1	0.01	0.5	0.5	0.1	1	0.1	0.1	0.1	2	0.01	0.001	
WP44/1	Rock	0.30	0.2	28.6	1.7	88	0.2	45.1	10.5	324	4.14	37.3	<0.5	0.5	12	<0.1	0.1	<0.1	82	0.30	0.143
WP44/2	Rock	0.27	0.4	21.0	2.3	35	0.1	8.8	4.3	305	1.68	8.2	1.0	0.4	3	<0.1	0.3	<0.1	15	0.01	0.011
WP44/3	Rock	0.44	0.1	0.4	0.2	1	<0.1	1.0	0.4	45	0.21	1.1	<0.5	<0.1	<1	<0.1	<0.1	<2	<0.01	0.004	

6...



Acme Analytical Laboratories (Vancouver) Ltd.  
 1020 Cordova St. East Vancouver BC V6A 4A3 Canada  
 Phone (604) 253-3158 Fax (604) 253-1716

www.acmelab.com

Client: **Czerny, Rick**  
 Box 125  
 9083 Gay Street  
 Fort Langley BC V1M 2R5 Canada

Project: PERL  
 Report Date: October 23, 2011

Page: 2 of 2 Part 2

CERTIFICATE OF ANALYSIS

VAN11005277.1

Method	1DX15	1DX15	1DX15	1DX15	1DX15	1DX15	1DX15	1DX15	1DX15	1DX15	1DX15	1DX15	1DX15	1DX15	1DX15	1DX15	1DX15	1DX15
Analyte	La	Cr	Mg	Ba	Ti	B	Al	Na	K	W	Hg	Sc	Tl	S	Ga	Se	Te	
Unit	ppm	ppm	%	ppm	%	ppm	%	%	%	ppm	ppm	ppm	ppm	%	ppm	ppm	ppm	
MDL	1	1	0.01	1	0.001	1	0.01	0.001	0.01	0.1	0.01	0.1	0.1	0.05	1	0.5	0.2	
WP44/1	Rock	3	65	1.70	10	0.003	<1	2.67	0.050	0.03	0.7	<0.01	2.6	<0.1	0.21	9	0.8	<0.2
WP44/2	Rock	4	9	0.42	17	<0.001	2	0.86	0.017	0.04	0.1	0.01	1.6	<0.1	<0.05	3	<0.5	<0.2
WP44/3	Rock	<1	3	0.01	<1	<0.001	<1	0.03	0.005	<0.01	0.1	<0.01	<0.1	<0.1	<0.05	<1	<0.5	<0.2

...10