

BC Geological Survey  
Assessment Report  
33066

PROSPECTING REPORT  
TENURE #617223  
EVENT #4976727

33066

2010 – 2011

**PROSPECTING REPORT**

CLAIM NAME – FOX2

TENURE # 617223

EVENT # 4976727

COQUAHALLA GOLD BELT REGION  
NEW WESTMINSTER DISTRICT  
MAP 092H

GPS COORDINATE REFERENCE  
CENTER OF CLAIM  
49. 22' 14" N, 121. 9' 4" W

REPORT PREPARED BY

TENURE OWNER  
ROBERT D'AOUST  
FMC 106134

AUGUST 10, 2011

## TABLE OF CONTENTS

Page	i ....	Copy of Tenure Renewal
	1 ....	Cover Page
	2 ....	Table of Contents
	3 ....	Introduction / Location & Access / Previous work / General Geology
	4 ....	Summary / Conclusion
	5 ....	Work Evaluation & Cost Statement / Attending Parties & Qualifications Affidavit
	6 ....	General Location Reference Map – Map 1
	7 ....	Local Area Reference Map – Map 2
	8 ....	Work Area Map – Map - 3

## **Introduction & Location**

The Fox2 property, tenure #617223, lies approximately 17 air kilometers due-east of the City of Hope. The tenure is an eight cell mineral claim situated on Montigny creek, a small tributary of Sowaqua creek. Sowaqua Creek is a northwesterly flowing tributary of the Coquihalla River. The property lies within the Coquihalla Gold Belt, a northwest trending mineralization zone, underlain by the Hozameen Fault. The general area is well notarized for hosting gold-bearing mineralization, with the more prominent deposit being that of the Carolin Mine, located approximately 15 kilometers to the north-north west.

## **Access**

Leaving the City of Hope, travel north on Hwy 5 (Coquihalla Hwy) approximately 22kms, then exit the highway at the Sowaqua Creek turn off. Travel down the exit ramp and enter the large gravel parking area; on your left is the sign denoting the entrance to the Sowaqua Creek Forestry road. Travel up this reasonably good two-lane gravel road 14kms to reach the western boundary of the claim.

## **Previous Work in the Area**

On investigation into the Sowaqua Creek Valley I found two historical Minfile reports (092HSW148 & 092HSW080) and an Aris report 11449 that revealed that some values of gold and platinum had been found. I did not find any reference to Montigny Creek.

## **General Area Geology**

In reference to the above noted work reports, the tenure's area generalized geology is described as being underlain by Permian to Jurassic Hozameen Complex rocks comprised mainly of inter-bedded chert, pelite and volcanic sandstones with distinct gray and black banding. The ultramafic rocks which occur along the Hozameen fault are part of the Coquihalla Serpentine Belt. Thirty-three samples containing silica with visible pyrrhotite and pyrite were assayed. Assays yielded traces of gold, silver, copper and nickel(Assessment Report 11449).

## **Summary**

Reconnaissance prospecting was conducted in two distinct areas of the claim on July 2, 2011.

Please reference to map # 3 – attached

Area #1 - from the Sowaqua Creek Road bridge across Montigny Creek we hiked approximately 420 meters upstream through the river canyon. We concentrated on the outcropping of blue clay that had been observed last season. We sifted and collected approximately 50 kilograms of -.45cm material for further processing and inspection.

Area #2 – from the bridge we drove 200 meters South along the road, to an area of soft sandy material that has the appearance of being either Glacial moraine or ancient creek deposits. We collected approximately 50 kilograms of -.42cm material for further processing and inspection.

## **Conclusions**

Using manual crushing methods and hydro emulsion processes, we separated and inspected the material. The material from area #1 with the blue clay produced 25 small flakes of gold, enough to say that there was “colour” in the pan. The material from area #2; along the road; produced 10 very small flakes of gold. It was concluded that further exploration should be afforded this property, thus the tenure was renewed for another term.

**Work Evaluation & Cost Statement**

**July 01, 2011**

**---- 10.0 Man Hours Prospecting---**

<b>Labor</b>	<b>5.0 hours</b>	<b>\$ 100.00</b>
<b>Supervisor</b>	<b>5.0 hours</b>	<b>\$ 150.00</b>
		<b>-----</b>
		<b>\$ 250.00</b>
<b>Allowable Vehicle Expenses (20%)</b>		<b>\$ 50.00</b>
		<b>-----</b>
	<b>Total</b>	<b>\$ 300.00</b>

**Attending Parties & Qualifications**

Robert D'Aoust – 26 years prospecting experience  
fmc - 106134

John Crowe – 3 years prospecting experience  
fmc – 225201

August 10, 2011

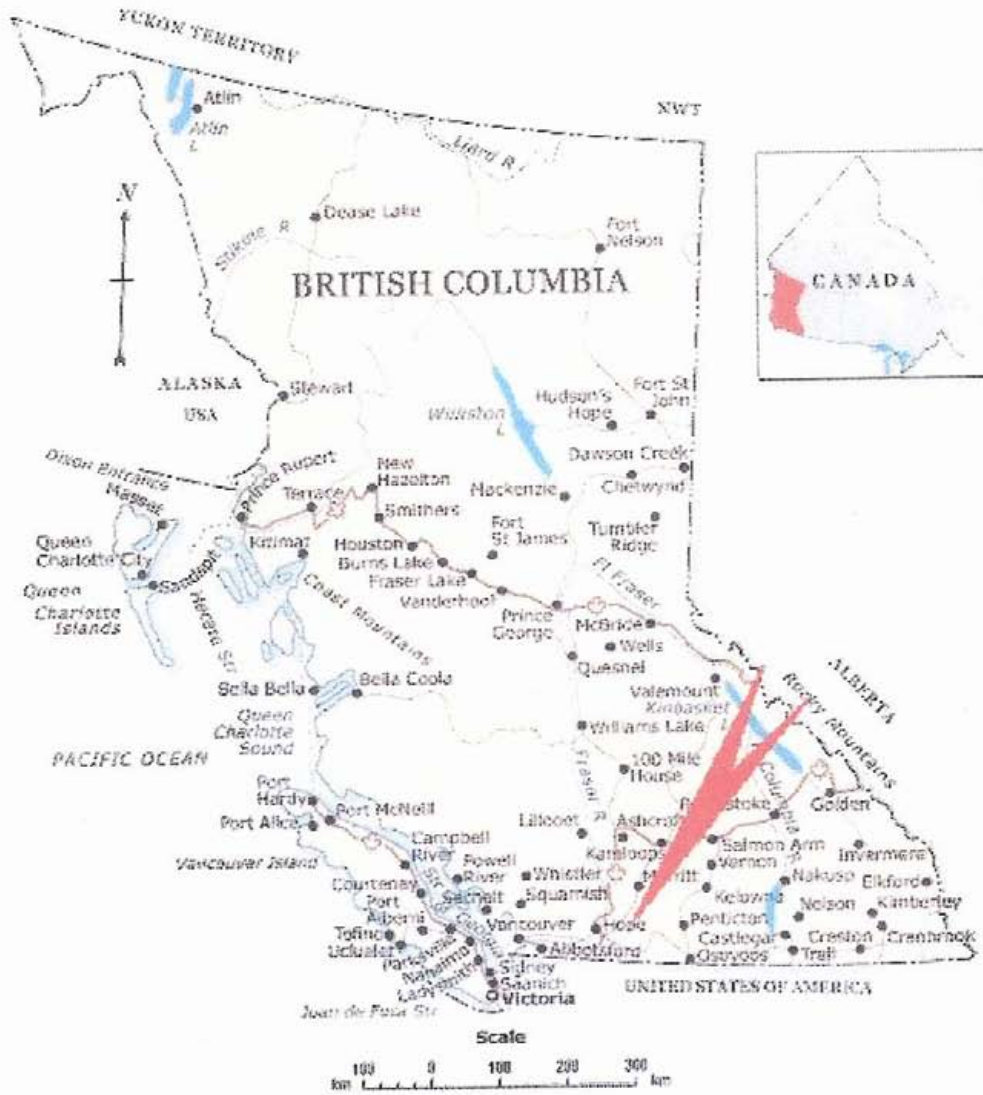
Report prepared by,



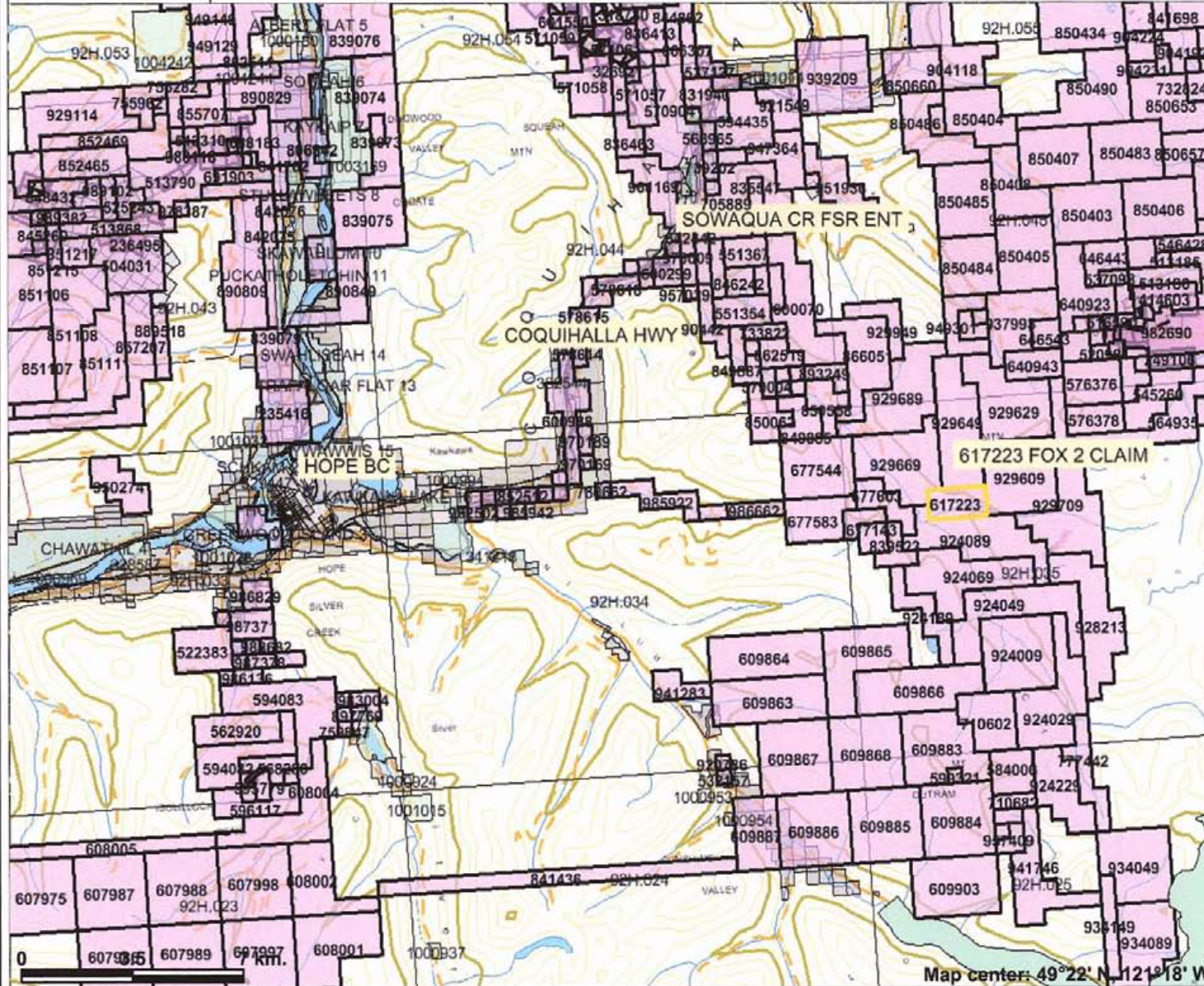
Robert Andre D'Aoust

# REFERENCE MAP 1

## Claim Geographical Location



# REFERENCE MAP 2



### Legend

- Indian Reserves
- National Parks
- Conservancy Areas
- Parks
- Federal Transfer Lands
- Mineral Tenure (current)
  - Mineral Claim
  - Mineral Lease
- Mineral Reserves (current)
  - Placer Claim Designation
  - Placer Lease Designation
  - No Staking Reserve
  - Conditional Reserve
  - Release Required Reserve
  - Surface Restriction
  - Recreation Area
  - Others
- First Nations Treaty Related Lands
  - First Nations Treaty Lands
  - Survey Parcels
- BCGS Grid
- Contours (1:250K)
  - Contour - Index
  - Contour - Intermediate
- Area of Exclusion
- Area of indefinite Contours
- Annotation (1:250K)
- Transportation - Points (1:250K)
  - Airfield
  - Anchorage - Seaplane
  - Ferry Point

Scale: 1:190,881

This map is a user generated static output from an Internet mapping site and is for general reference only. Data layers that appear on this map may or may not be accurate, current, or otherwise reliable. THIS MAP IS NOT TO BE USED FOR NAVIGATION.

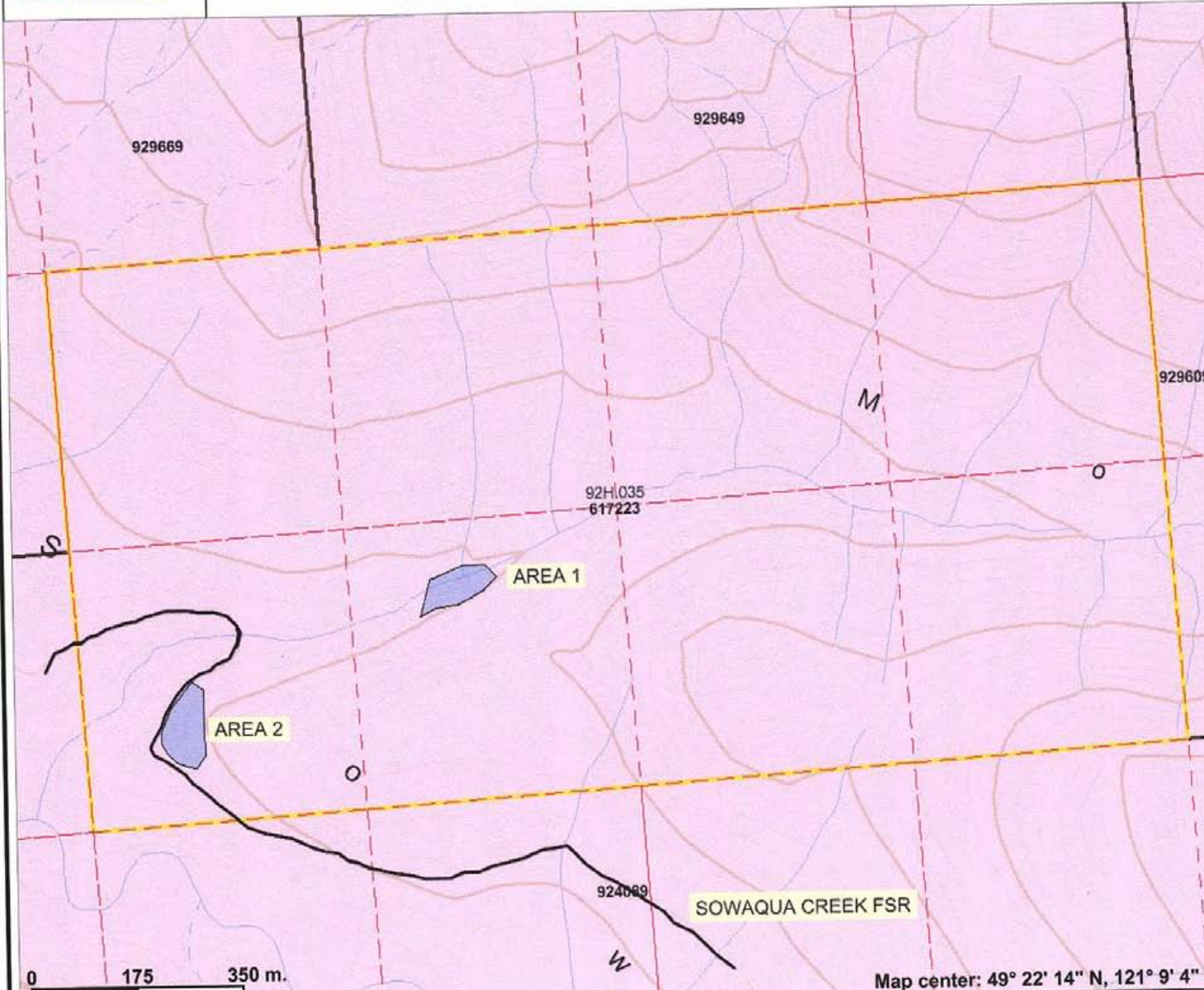
Notes: EVENT #4976727

Map center: 49°22' N, 121°18' W





# TENURE 617223 - EVENT #4976727



### Legend

- Indian Reserves
- National Parks
- Conservancy Areas
- Parks
- Federal Transfer Lands
- MTO Grid (MTO)
- Mineral Tenure (current)
- Mineral Claim
- Mineral Lease
- Mineral Reserves (current)
  - Placer Claim Designation
  - Placer Lease Designation
  - No Staking Reserve
  - Conditional Reserve
  - Release Required Reserve
  - Surface Restriction
  - Recreation Area
  - Others
- First Nations Treaty Related Lands
  - First Nations Treaty Lands
  - Integrated Cadastral Fabric
  - Survey Parcels
  - BCGS Grid
  - Contours (TRIM)
    - Contour - Index
    - Contour - Index.Indefinite
    - Contour - Index.Depression
    - Contour - Index.Depression Indefinite
    - Contour - Intermediate
    - Contour - Intermediate.Indefinite
    - Contour - Intermediate.Depression



Scale: 1:10,017

Map center: 49° 22' 14" N, 121° 9' 4" W

This map is a user generated static output from an Internet mapping site and is for general reference only. Data layers that appear on this map may or may not be accurate, current, or otherwise reliable. THIS MAP IS NOT TO BE USED FOR NAVIGATION.

Notes: PROSPECTING AREAS - FOX 2 CLAIM