

BC Geological Survey
Assessment Report
33161b



SERENGETI
RESOURCES INC.

ASSESSMENT REPORT

including

Line Cutting

on the

CHOO PROPERTY

**OMINECA MINING DIVISION,
British Columbia
NTS: 94C/02
Latitude 55°6' N, Longitude 124°23' W**

**Prepared for Operators:
SERENGETI RESOURCES INC
1700-750 West Pender Street
Vancouver, BC, Canada V6C 2T8**

**By:
H.R. SAMSON,
B.Sc.,
2 September, 2011
Vancouver, B.C.**

Table of Contents

List of Tables	1
List of Figures	1
List of Appendix.....	1
(1) Introduction and Terms of Reference.....	2
(2) Property Description and Location	2
(3) Accessibility, Local Resources, Infrastructure, Climate and Physiography	8
(4) History.....	8
(5) Geology	9
(6) Line Cutting	10
(7) Summary and Recommendations.....	10

List of Tables

Table 1 – Detailed Claim Information

List of Figures

Figure 1 – Property Location

Figure 2 – Choo Property Claim Details

Figure 3 – General Site Access Map

Figure 4 – Access over Google Earth Image

Figure 5 – Compilation of Historical Work and Proposed IP Lines

Figure 6 – 2011 Choo IP Lines – cut by Line Cutters

Figure 7 – 2011 Choo IP Lines over Compilation of Historical Work in 2011 Work Area

List of Appendix

Appendix A - Expenditure Statement

Appendix B - Geologist's Certificate

(1) Introduction and Terms of Reference

Serengeti Resources Inc. (Serengeti) acquired the Choo claims by staking and purchase agreements between 2004 and 2011. The Choo claims were acquired as a result of a review of historical exploration carried out in the area that highlighted the potential for a porphyry Cu \pm -Au deposit. The property lies in the prospective Quesnel Trough, between the operating Mount Polley Mine and the development stage Mt. Milligan deposit.

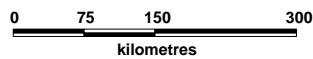
The Project is currently under option to Phelps Dodge Canada Corporation (PDCC), a wholly owned subsidiary of Phoenix, Arizona based Freeport McMoran Copper & Gold. PDCC has the option to earn an initial 51% interest in Serengeti's Choo and neighboring Tchentlo projects by financing \$5 million in project expenditures over a 4 year period. Serengeti will be the project operator for the initial earn-in phase.

In the upcoming summer field season of 2011, Serengeti and PDCC have an approved work plan to carry out 21.5 line km of line cutting and pole-dipole Induced Polarization (IP) surveying, and to collect 700 soil samples as a follow up to the geophysical survey. To access the property, Serengeti and PDCC plan to utilize the existing network of roads travelling east from the Leo Creek FSR.

In order to allow access to test for a covered Cu \pm -Au porphyry target on the property, Serengeti and PDCC carried out a \$23,920 line cutting program, completed by Tootikoh contracting based out of Fort St James, BC (Appendix A). From July 18th to August 2nd, the Tootikoh crew completed 16 days of line cutting.

(2) Property Description and Location

The Choo property is 100% owned by Serengeti. It is located in the Omineca Mining Division of north-central British Columbia, Canada, 80 km north of Fort St James, at 55° 6' north latitude and 124° 26' west longitude (Figure 1). The 22 contiguous mineral claims which comprise the Choo property cover an area of 7,754 hectares (Figure 2). Additional information regarding the individual claims can be referenced in Table 1.



SERENGETI RESOURCES INC.

CHOO PROPERTY

Location Map

Date	Feb 24, 2006	Scale	1:8,000,000	Plate	
Projection	UTM - NAD83	State/Province	BC		1
Author	MO	File	KwanLoc		

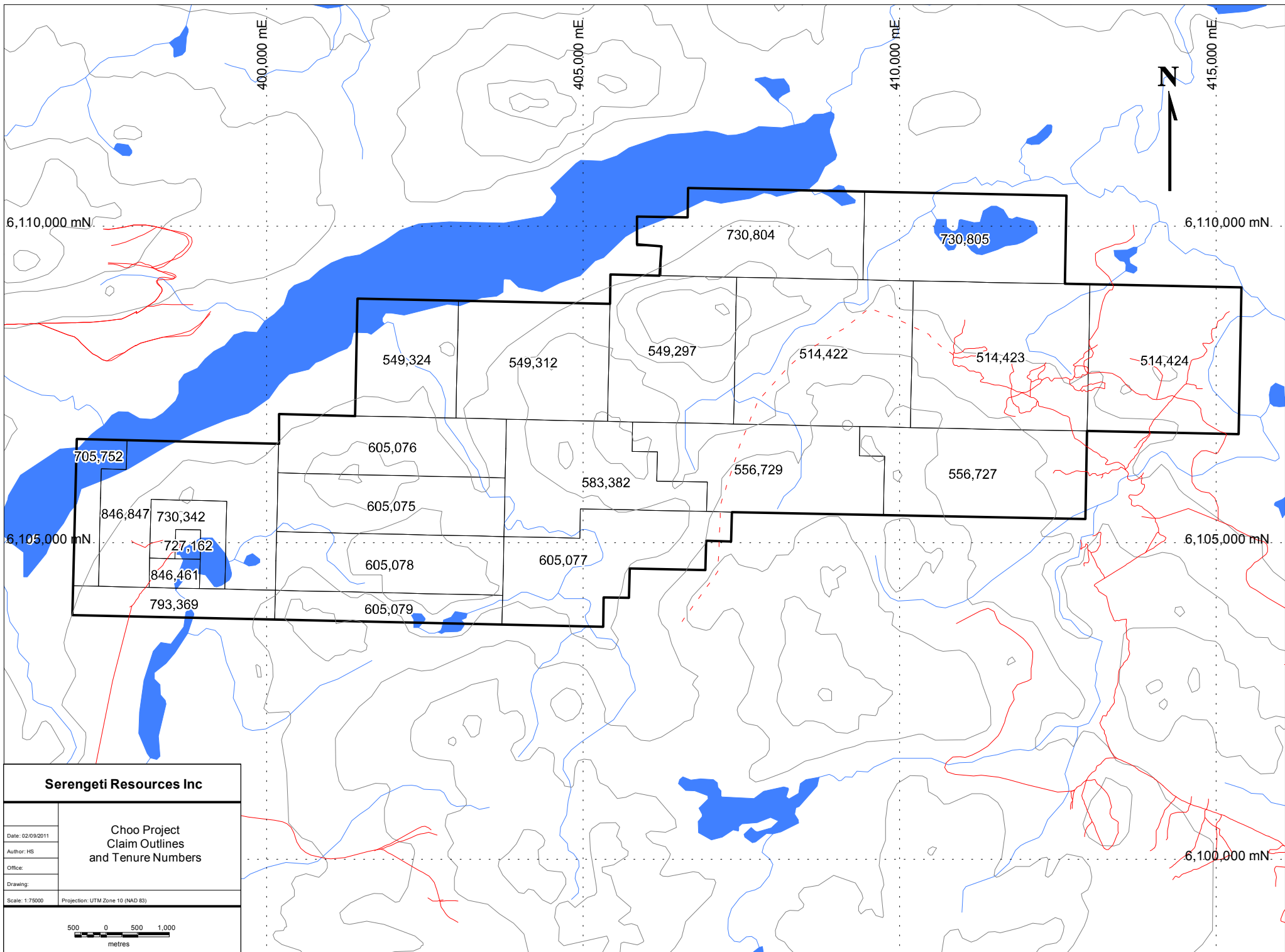


Figure 2

**TABLE 1
CHOO CLAIM DETAILS**

<i>Project</i>	<i>Tenure #</i>	<i>Claim Name</i>	<i>Hectares</i>	<i>Expiry Date</i>	<i>Required 1yr Work on Next Year</i>	<i>Annual Fees Due</i>	<i>NTS</i>	<i>Record Date</i>	<i>Mining Division</i>	<i>Owner</i>
CHOO	514422		647.578	30-Nov-13	\$5,180.62	\$259.03	093N018	5-Aug-04	OMENICA	SIR
CHOO	514423		647.582	30-Nov-13	\$5,180.66	\$259.03	093N019	5-Aug-04	OMENICA	SIR
CHOO	514424		555.072	30-Nov-13	\$4,440.58	\$222.03	093N019	5-Aug-04	OMENICA	SIR
CHOO	549297	CHOO 5	462.555	30-Nov-13	\$3,700.44	\$185.02	093N018	14-Jan-07	OMENICA	SIR
CHOO	549312	CHOO 6	444.074	30-Nov-13	\$3,552.59	\$177.63	093N018	14-Jan-07	OMENICA	SIR
CHOO	549324	CHOO 7	296.050	30-Nov-13	\$2,368.40	\$118.42	093N018	14-Jan-07	OMENICA	SIR
CHOO	556727	CHOO 10	462.747	30-Nov-13	\$3,701.98	\$185.10	093N009	20-Apr-07	OMENICA	SIR
CHOO	556729	CHOO 11	462.742	30-Nov-13	\$3,701.94	\$185.10	093N008	20-Apr-07	OMENICA	SIR
CHOO	583382	CHOO 101	407.233	30-Nov-13	\$3,257.86	\$162.89	093N008	30-Apr-08	OMENICA	SIR
CHOO	605075	CHOO WEST 1	333.228	30-Nov-14	\$2,665.83	\$133.29	093N008	28-May-09	OMENICA	SIR
CHOO	605076	CHOO WEST 2	333.159	30-Nov-14	\$2,665.27	\$133.26	093N008	28-May-09	OMENICA	SIR
CHOO	605077	CHOO WEST 3	425.876	30-Nov-14	\$3,407.01	\$170.35	093N008	28-May-09	OMENICA	SIR
CHOO	605078	CHOO WEST 4	333.301	30-Nov-14	\$2,666.41	\$133.32	093N008	28-May-09	OMENICA	SIR
CHOO	605079	CHOO WEST 5	166.677	30-Nov-14	\$1,333.41	\$66.67	093N008	28-May-09	OMENICA	SIR
CHOO	705752	CHOO WEST 6	111.080	30-Nov-14	\$444.32	\$44.43	093N008	8-Feb-10	OMENICA	SIR
CHOO	727162	CAMP 1	18.520	30-Nov-14	\$74.08	\$7.41	093N008	18-Mar-10	OMENICA	SIR
CHOO	730342	CAMP 1A	111.090	30-Nov-14	\$444.36	\$44.44	093N008	18-Mar-10	OMENICA	SIR
CHOO	730804	MIL 3	443.870	30-Nov-14	\$1,775.48	\$177.55	093N018	19-Mar-10	OMENICA	SIR
CHOO	730805	MIL 4	443.870	30-Nov-14	\$1,775.48	\$177.55	093N018	19-Mar-10	OMENICA	SIR
CHOO	793369	SERENGETI	148.160	30-Nov-14	\$592.64	\$59.26	093N008	16-Jun-10	OMENICA	SIR
CHOO	846461	CAMP	37.040	30-Nov-13	\$148.16	\$14.82	093N008	14-Feb-11	OMENICA	SIR
CHOO	846847	CAMP 1	462.830	30-Nov-13	\$1,851.32	\$185.13	093N008	15-Feb-11	OMENICA	SIR
22 claims			7754.334		\$54,928.84					

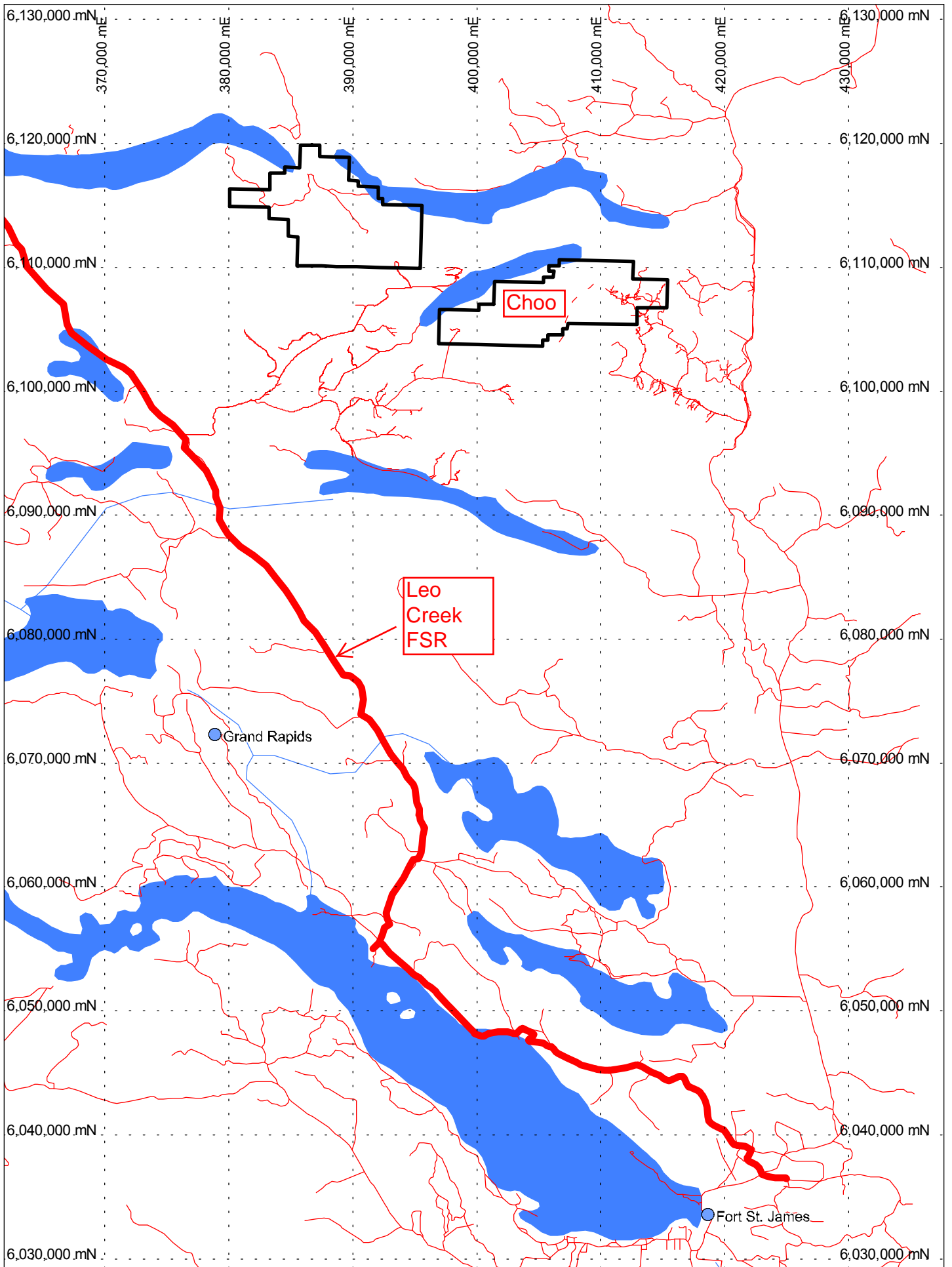


Figure 3

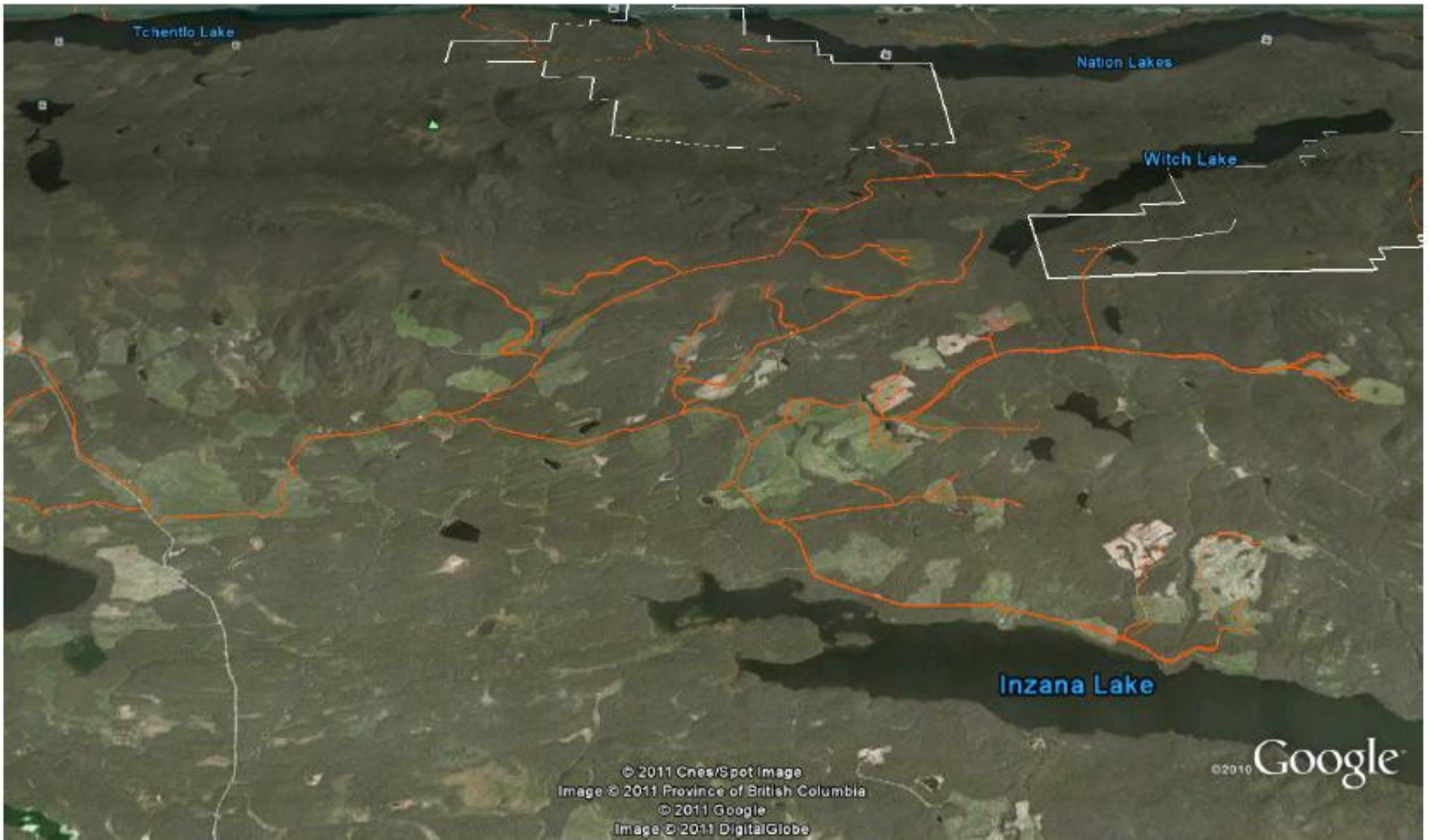


Figure 4

(3) Accessibility, Local Resources, Infrastructure, Climate and Physiography

Access to the eastern portion of the Choo property can be obtained via the North Road from Fort St James. The North Road accesses an extensive network of logging roads in north-central BC. The western half of the property is accessible via a network of intermittently active forestry roads travelling east off of the Leo Creek FSR at km 48.5 (Figures 3 and 4). There are several portions in the middle of the property that require helicopter access. The line cutting work carried out in the 2011 program is in the central to western half of the property and the crew utilized helicopter and the existing road network for access. The property is located approximately 20 km west of the Mt. Milligan deposit, owned by Terrane Metals, and 80 km north of Fort St James.

The climate of the region is typical of middle latitudes in Canada as the winters are cold (-5 to -25 deg Celcius) and summers are warm (20-25 degrees Celcius). Precipitation is moderate as nearby Fort St James receives an average of 47.5 cm of precipitation per year. At this early stage, exploration on the property is confined to a June to December field season.

The property is located in the Interior Plateau at an elevation of 1100-1200 m (asl). Topography is characterized by gentle relief and is covered by extensive glacial-fluvial overburden. The vegetation on the property is best characterized by the presence of pine and fir forests with swampy grasslands occurring in low-lying areas. Much of the eastern half of the property has been or is actively being logged.

(4) History

The skarn copper-gold mineralization at the Taylor Creek showing (located in the north-central region of the Choo claims) was discovered pre-1960. In 1971 Ambassador Mines Ltd. completed a soil grid and ground magnetic/seismic surveys. In 1987 the property was staked by Richard Haslinger and in 1988 Placer Dome completed soil and rock sampling around the Taylor showing. Noranda Exploration then acquired the property in 1989 and to 1992 completed geological mapping, soil/rock sampling, an aeromagnetic-EM survey, ground magnetic and induced polarization surveys and drilled 16 diamond drill holes (1,659m). This data is reported in assessment reports 17,793, 19,926, 20,383, 21,288, 22,179, 22,299 and 22,895. The work identified a greater than 6.5 km by 1.0 km, poorly exposed induced polarization anomaly (greater than 15mv/v) that is coincident with strong aeromagnetic anomalies. Wide-spaced drilling intersected pyritized, in part skarnified and propylitized andesite and pyritized and propylitized (locally with potassic alteration) diorite and monzonite with low grade copper and gold mineralization. The best holes were #11-0.12%Cu/33.0m, #15-0.07%Cu/79.7m, #8-0.03%Cu and 0.14g/tAu/40.0m and #10-0.68%Cu/3.0m and 1.5g/tAu/4.2m.

In 1990 and 1991 Moondust Ventures Inc. completed geological mapping and an induced polarization survey to the east of Noranda's property but in the eastern end of the current Choo

property and drilled seven diamond drill holes. This drilling intersected strongly propylitized andesites with 5 to 8 % disseminated and fracture-controlled pyrite, pyrrhotite and minor chalcopyrite. The best hole was 0.10%Cu/18.3 at the bottom of hole 91-5.

In 1991, Silver Standard and Mutual Resources completed IP and magnetic surveys in the area of the Camp showing. A 7 hole drill program intersected propylitized and mineralized takla volcanics in holes 91-2 and 91-7. Hole 91-2 intersected 1827 ppm and 33 ppb Au over the bottom 127 m (AR 21295).

In 2009, Serengeti completed two drill holes (592.53 m) in the eastern portion of the property. The two diamond drill-holes completed by Serengeti intersected propylitically altered volcanics (andesites and basaltic tuffs) and lesser diorite dykes. Alteration included pervasive, weak to strong chlorite, minor epidote and late calcite common in all holes. Choo hole C-09-001, the most westerly of all holes drilled, intersected sulphide veining consisting mainly of pyrite and one chalcopyrite vein in the last box of core. This hole encountered a significant amount of sulphides and variable hydrothermal alteration, suggesting that it may be proximal to a hydrothermal sulphide system (AR 31311).

Figure 5 is a compilation map, illustrating the significant results of previous geochemical, geophysical, and drilling work done on the Choo property. It also shows proposed IP lines to survey target areas. The final 2011 plan included slightly wider spaced IP lines to survey a broader area.

(5) Geology

The Choo property lies in the 1,300 km long by 35 km wide Quesnel Trough which hosts numerous alkalic porphyry copper-gold deposits from southern to northern B.C. In the area of the property, the Mt. Milligan and Lorraine deposits are found 20 km to the east and 110 km to the northwest respectively. To the west, deformed and uplifted Permian Cache Creek Group rocks are separated from Quesnel Trough by the Pinchi fault. To the east, the Manson fault zone separates this belt from the uplifted Proterozoic/early Paleozoic Wolverine metamorphic complex and the Mississippian-Permian Slide Mountain and Cache Creek Groups.

In the Chuchi Lake area the Talka Group sequence (Quesnel Trough) is dominated by alkalic to subalkalic dark green tuffs, andesitic to basaltic volcanic breccias and flows of similar composition. These volcanic rocks are intruded by syenite, monzonite, monzodiorite and diorite plug and stocks, which are associated with the porphyry copper-gold mineralization, and are coeval with the volcanic rocks.

The Choo property is almost completely covered by glacial till (3 m to greater than 30 m thick) with scattered outcrops of pyritized and propylitized andesites on a hill in the southeastern part of the Choo claim block, as well as a pyroxene-garnet skarn at the Taylor showing along Taylor Creek. Drilling of the induced polarization anomaly shows widespread pyrite, pyrrhotite and minor chalcopyrite mineralization associated with propylitized and skarnified andesite and propylitized and locally potassically altered (secondary K-feldspar, biotite and magnetite) diorite and monzonite. Mineralization occurs as disseminations, along fractures and in quartz veinlets.

Pyrite and pyrrhotite contents are two to greater than 8 percent, commonly greater than five percent.

(6) Line Cutting

The Line Cutting Crew supplied by Tootikoh mobilized to the project site on July 18th, 2011. From July 18th to August 2nd, the crew brushed 21.5 line km of IP lines (Figure 6). In addition, the crew brushed out a 4 km long ATV (quad) trail to access several of the lines. Access to the western lines was via existing and/or ATV trail. Access to the easternmost lines was via helicopter.

The line cutting program is intended to provide access for the following purposes: i) a geophysical crew is scheduled to complete 21.5 line km of Induced Polarization (IP) surveys, and ii) a geological crew is scheduled to follow up the IP survey with geological investigation and collection of 700 soil samples. The known geophysical and drilling-based targets overlain by the 2011 cut lines is shown in Figure 7.

(7) Summary and Recommendations

The Line Cutting has been successful in establishing access for IP surveying and geochemical surveying, both of which are scheduled to be completed in late summer/early fall of 2011. In total, 21.5 line km of lines were cut to facilitate access for 21.5 line km of IP surveying.

Therefore, it is recommended that:

- i) The proposed 21.5 line km of IP surveying should be completed
- ii) The proposed 700 Ah soil samples should be collected to follow up currently known and potential newly discovered IP anomalies – from the 2011 survey

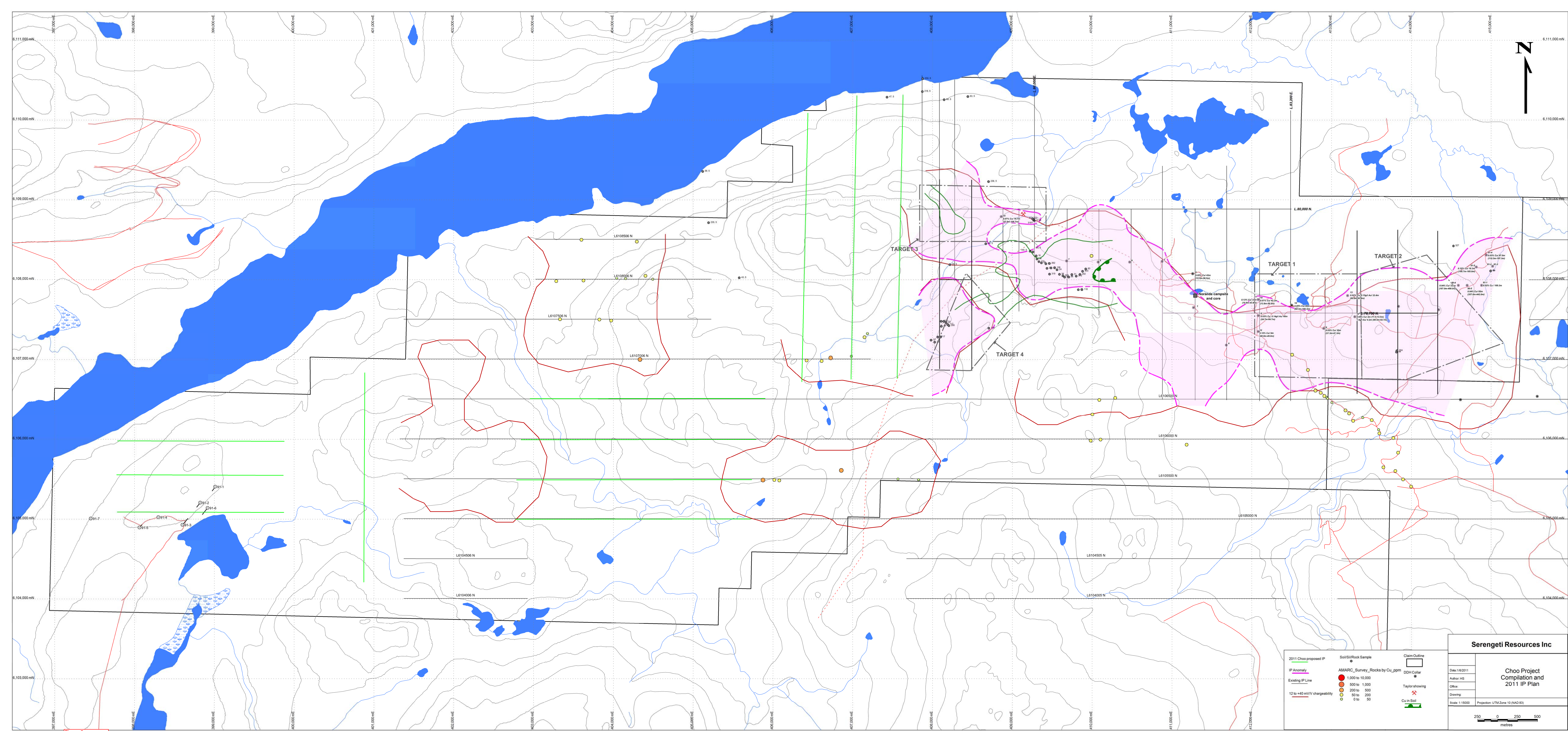


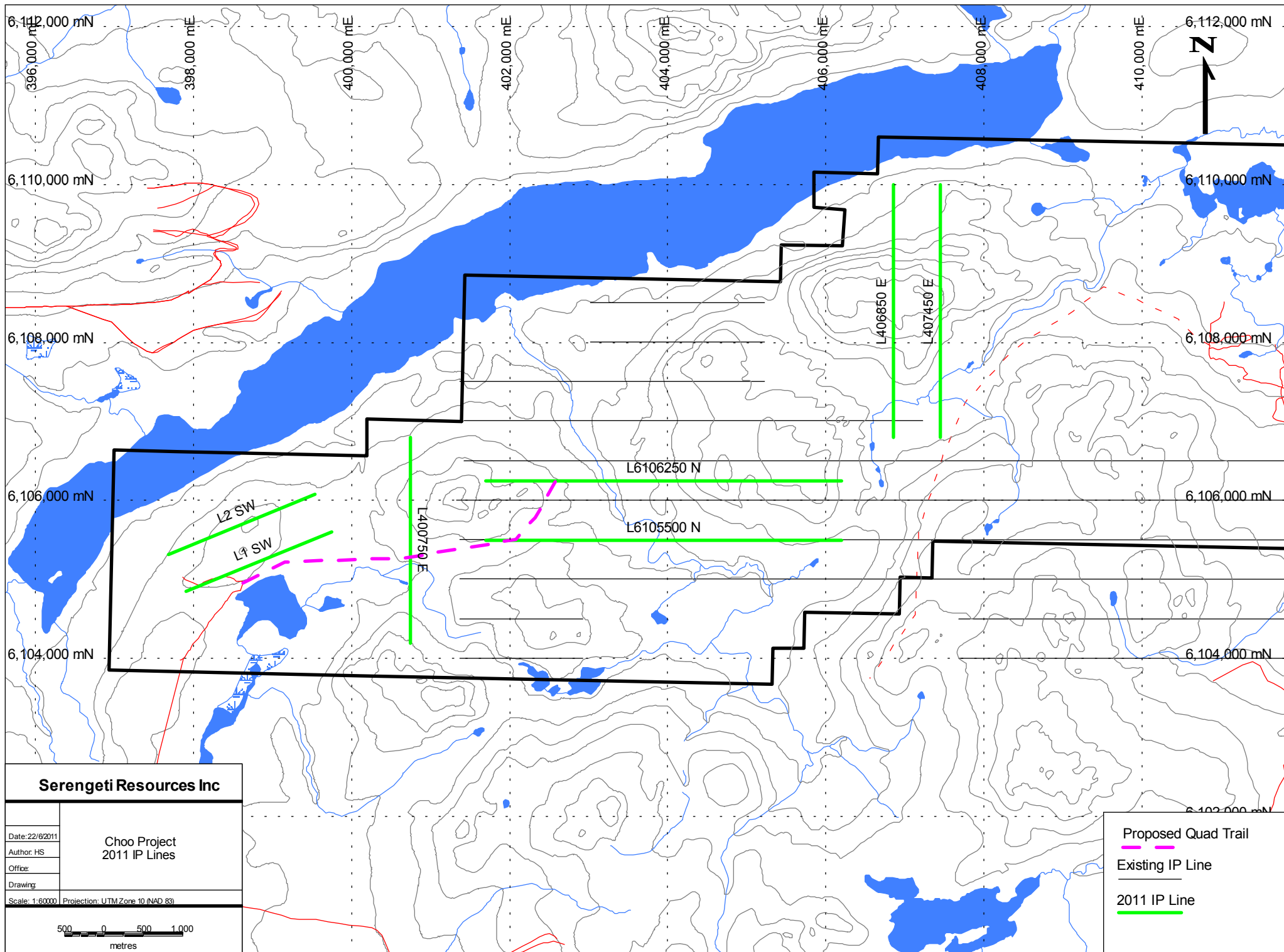
Figure 5

Serengeti Resources Inc

Date: 1/6/2011
 Author: HS
 Office:
 Drawing:
 Scale: 1:15000
 Projection: UTM Zone 10 (NAD 83)

**Choo Project
 Compilation and
 2011 IP Plan**

250 0 250 500
 metres



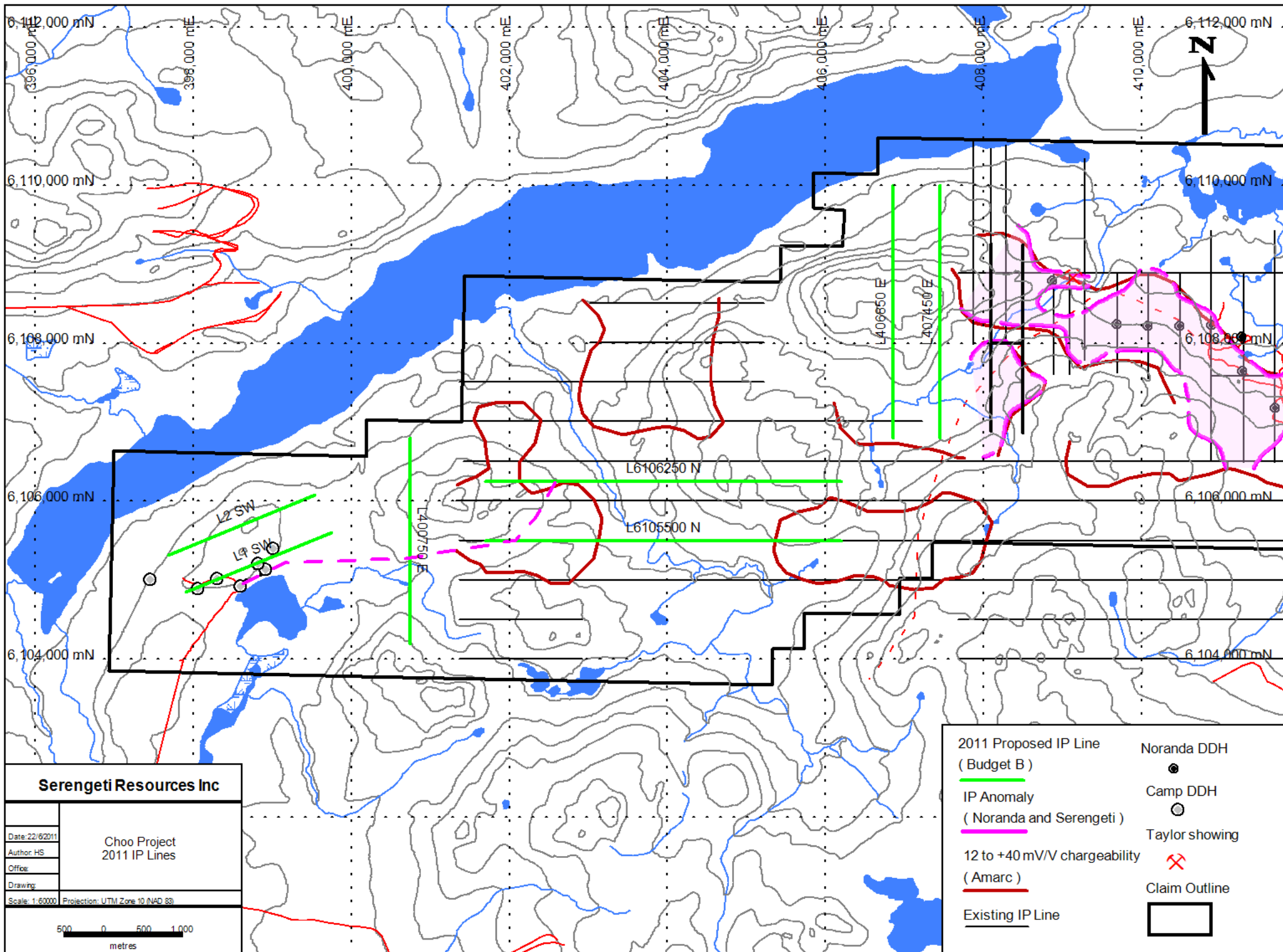


Figure 7

Appendix A – Expenditure Statement

Choo Property - July-August 2011 Line Cutting

Staff:

Tootikoh Contracting Line Cutters - Crew of 4
16 days at \$1200/day \$ 19,200.00

Truck:

16 days at \$100/day \$ 1,600.00

Admin:

15% on top of Survey and Report costs \$ 3,120.00

Total
\$ 23,920.00

Dates - July 18th - August 2nd, 2011

Appendix B – Geologist's Certificate

GEOLOGIST'S CERTIFICATE

I, Hugh R. Samson of #205-1875 West 8th Avenue, Vancouver, in the province of British Columbia, DO HEREBY CERTIFY:

1. THAT I am Serengeti Resources Inc.'s Senior Project Geologist.
2. THAT I am a 2005 graduate of Dalhousie University with an Honours BSc.
3. THAT I have practised in the field of Geosciences since my graduation from University.
4. THAT this report is based on work carried out by Fort St James-based Tootikoh contracting, working on behalf of Serengeti Resources Inc, July 18th and August 2nd, 2011.
5. THAT this report was written by myself under the supervision and direction of David W. Moore, President and CEO of Serengeti Resources Inc. and a Professional Geoscientist (P. Geo) registered and in good standing with the Association of Professional Engineers and Geoscientists of the Province of British Columbia (#28163).

DATED at Vancouver, British Columbia this 2nd day of September, 2011.

Hugh R. Samson, B.Sc.



David W. Moore, P. Geo

