

BC Geological Survey
Assessment Report
33295

ASSESSMENT REPORT
On
Rock & Bio Geochemistry Program

Bird Property

Omineca Mining Division

Trim 093F.065

UTM Coordinates 5943500N – 360000E

Owner/Operator
Kootenay Silver Inc.
Suite 1820 - 1055 W. Hastings St.
Vancouver, BC V6E 2E9

REPORT BY
Craig Kennedy
2290 Dewolfe Ave
Kimberley, BC V1A 1P5

September 2012

Ministry of Energy & Mines
Energy & Minerals Division
Geological Survey Branch

**ASSESSMENT REPORT
TITLE PAGE AND SUMMARY**

TITLE OF REPORT [type of survey(s)] Rock & Biogeochemistry TOTAL COST \$ 8151.36

AUTHOR(S) Craig Kennedy SIGNATURE(S) Craig Kennedy

NOTICE OF WORK PERMIT NUMBER(S)/DATE(S) N/A YEAR OF WORK 2012

STATEMENT OF WORK - CASH PAYMENT EVENT NUMBER(S)/DATE(S) 5393776

PROPERTY NAME Bird

CLAIM NAME(S) (on which work was done) 672663, 672683, 751282, 845105

COMMODITIES SOUGHT Cu, Au, Ag

MINERAL INVENTORY MINFILE NUMBER(S), IF KNOWN ~~672663~~ N/A

MINING DIVISION Omineca Mining Division NTS 093F.065

LATITUDE — ° — ' — " LONGITUDE — ° — ' — " (at centre of work)

OWNER(S) UTM Coordinates 5943500N-360000E

1) Kootenay Silver Inc. 2) _____
Suite 1820 - 1055 W. Hastings St.

MAILING ADDRESS
Vancouver B.C. V6E-2E9

OPERATOR(S) (who paid for the work)

1) Kootenay Silver Inc. 2) _____

MAILING ADDRESS
Suite 1820 - 1055 W. Hastings St.
Vancouver B.C. V6E-2E9

PROPERTY GEOLOGY KEYWORDS (lithology, age, stratigraphy, structure, alteration, mineralization, size and attitude):
Mafic Volcanics and intrusive rocks associated with a NW striking fault. Carbonate, Albite, epidote, chlorite and hematite alteration associated with Anomalous Cu, Ag, Au mineralization. Copper mineralization extends 4 km.

REFERENCES TO PREVIOUS ASSESSMENT WORK AND ASSESSMENT REPORT NUMBERS _____

TYPE OF WORK IN THIS REPORT	EXTENT OF WORK (IN METRIC UNITS)	ON WHICH CLAIMS	PROJECT COSTS APPORTIONED (incl. support)
GEOLOGICAL (scale, area)			
Ground, mapping _____			
Photo interpretation _____			
GEOPHYSICAL (line-kilometres)			
Ground			
Magnetic _____			
Electromagnetic _____			
Induced Polarization _____			
Radiometric _____			
Seismic _____			
Other _____			
Airborne _____			
GEOCHEMICAL			
(number of samples analysed for ...)			
Soil _____			
Silt _____			
Rock <i>8 Biogeochemistry</i> <i>Rock 18 Samples Biogeochem 50 samples</i>		<i>All</i>	<i># 8151.36</i>
Other _____			
DRILLING			
(total metres; number of holes, size)			
Core _____			
Non-core _____			
RELATED TECHNICAL			
Sampling/assaying _____			
Petrographic _____			
Mineralographic _____			
Metallurgic _____			
PROSPECTING (scale, area) _____			
PREPARATORY/PHYSICAL			
Line/grid (kilometres) _____			
Topographic/Photogrammetric (scale, area) _____			
Legal surveys (scale, area) _____			
Road, local access (kilometres)/trail _____			
Trench (metres) _____			
Underground dev. (metres) _____			
Other _____			
TOTAL COST			<i># 8151.36</i>

TABLE OF CONTENTS

	Page
1.00 INTRODUCTION	
1.10 Location and Access	3
1.20 Property	3
1.30 History of Previous Work	3
1.40 Summary	3
2.00 GEOCHEM PROGRAM	7
2.10 Rock Geochemistry	7
2.20 Bio-Geochemistry	7
3.00 CONCLUSION	8
4.00 STATEMENT OF EXPENDITURES	9
5.00 AUTHOR'S QUALIFICATIONS	10

List of Illustrations

Figure 1 Regional Property Location Map	5
Figure 2 Claim Location Map	6
Figure 3-9 Rock Sample Maps	14
Appendix 1. Rock Sample Descriptions	11
Appendix 2. Acme Rock Geochem Analyses	21

BIRD PROPERTY

ROCK & BIO-GEOCHEMISTRY REPORT

Craig Kennedy

September 2012

1.00 INTRODUCTION

1.10 Location and Access

The Property is located in the Omineca Mining Division of central BC, NTS 093.F065. Very good access is provided by the Holy Cross logging road, Marilla logging road and secondary haul roads on the property.

1.20 Property

The Bird Property is covered by tenures 672663, 672683 and 751282 and 845105 and is owned by Kootenay Silver Inc. of Vancouver BC.

1.30 History of Previous Exploration

The Bird Property area has been held by exploration companies and individuals through the past 30 years.

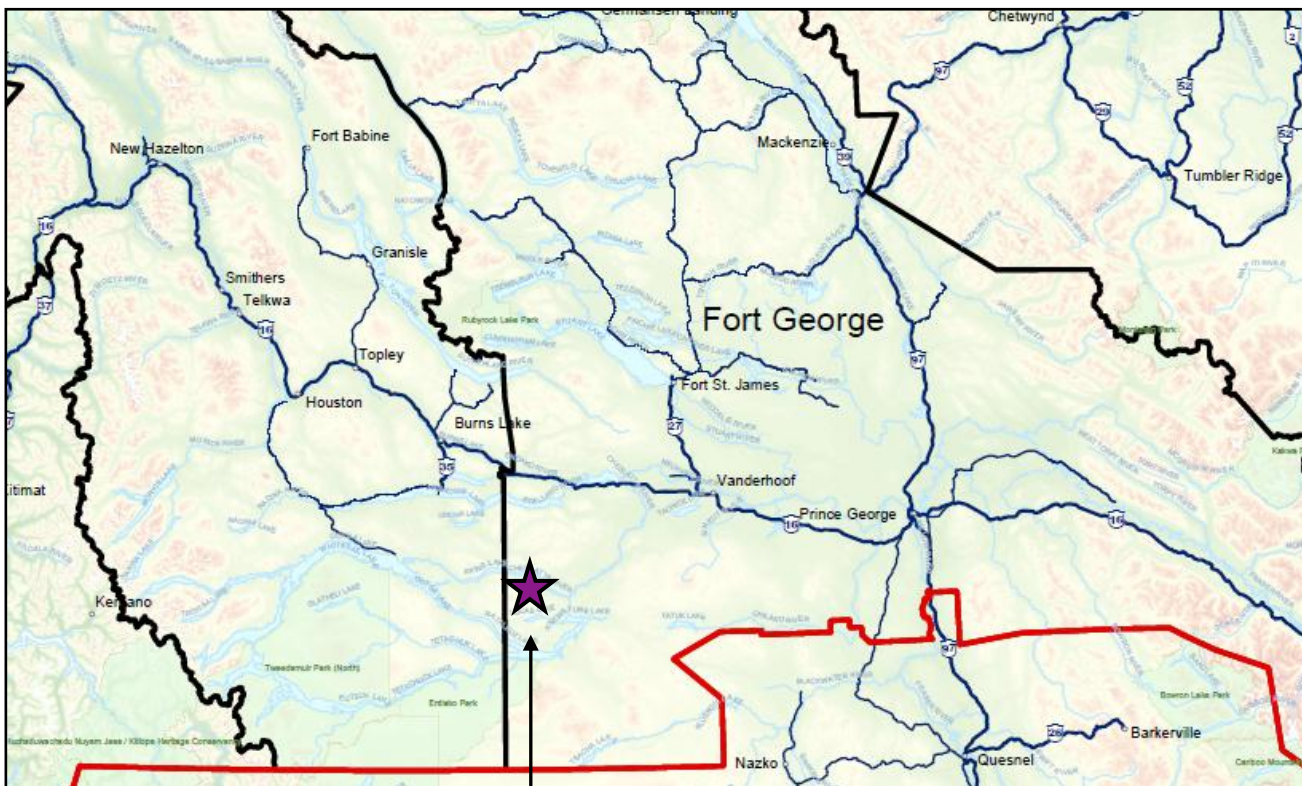
1.40 Summary

The Bird Property is one of a number of properties hosted by the postulated Nechako Arch. Kootenay Silver Inc. entered into a grubstake agreement with Fred Critchlow Contracting to evaluate, then elect on those properties fitting Kootenay Silver's exploration criteria. The Nechako Arch is an exploration concept contained within a north-eastern running structural zone, which since Eocene time has been defined by strongly developed geomorphology. This

geomorphology is delineated by stream and lake patterns. The general area hosts geology predominantly consisting of Jurassic through to Tertiary volcanic and intrusive rocks. The metal mine which keys the area is the impressive Endako molybdenum porphyry deposit, approximately 40 kilometres to the northwest of the property. As with most of the Nechako plateau bedrock occurrence is sparse but where available provides opportunity to view prominent structure controls and alteration styles. Jurassic and Cretaceous intrusive rocks and Eocene volcanic rocks are the most common in Kootenay Silver's area of interest. These rocks are exposed as structural islands where northeast structure is cut by northwestern structural systems.

It is speculated that the Endako deposit is a sub-hot-spring system, which has been exposed by structural uplift and erosion. A key exploration clue is that the Endako mine area is host to many age and phase type intrusive, a piston geological environment. The above feature is common in Kootenay Silver's area of interest and may in fact be diagnostic of the Nechako arch. Structural blocks with hetro-genius intrusive exposures may be exposed to or below porphyry levels opening opportunity for shear zone and/or stockwork gold systems. Structural blocks with volcanic cover and hot spring alteration can be considered potential porphyry targets. These opportunities within this type of structural zone (Nechako Arch) provide encouragement for discovery of a large bulk mineable gold deposit. This target type is Kootenay Silver's favoured focus.

Figure 1: Regional Location Map

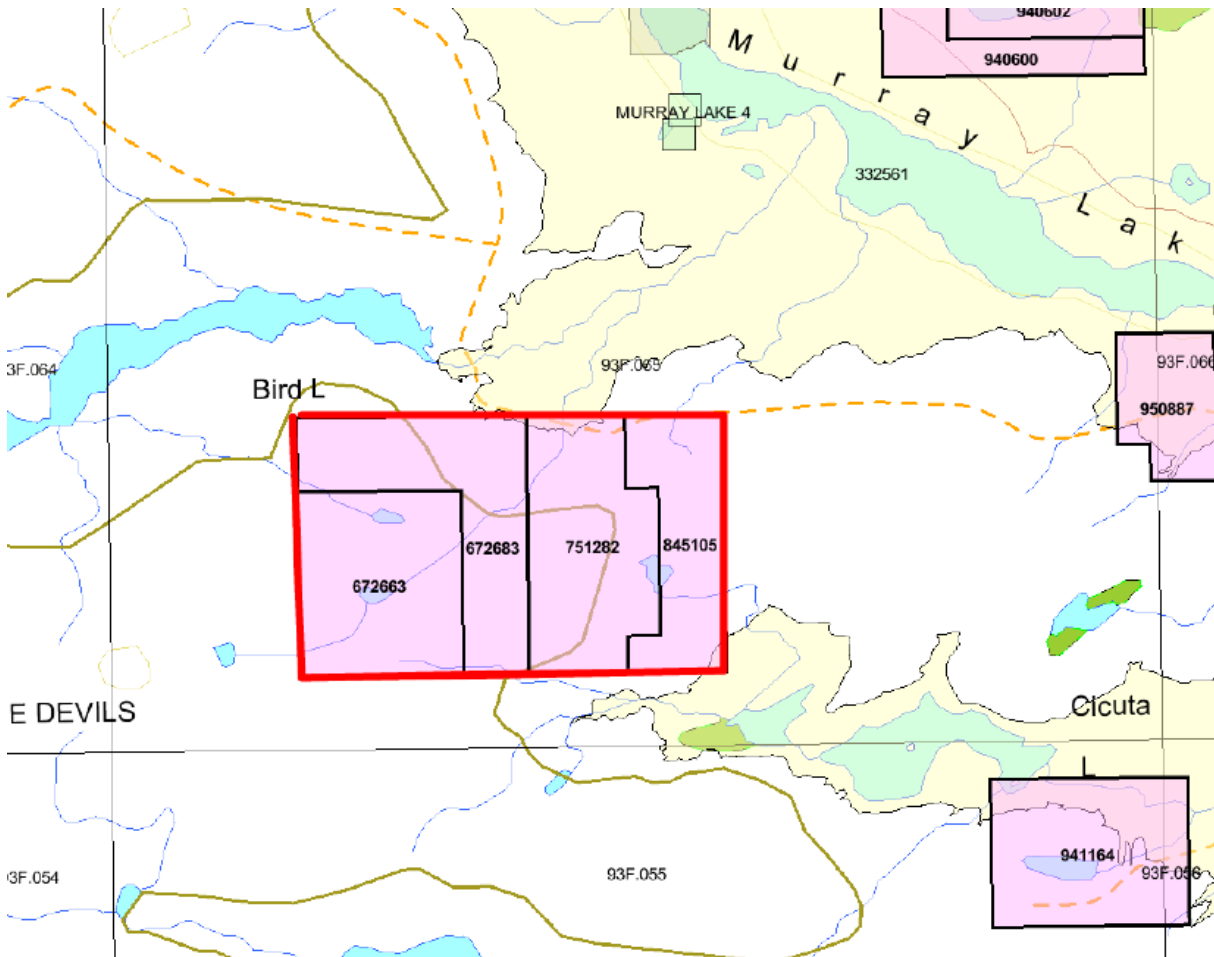


Bird Property Location

Figure 2: Claim Location Map

Map # 093F.065

Scale 1:80,000



2.00 GEOCHEMISTRY

A rock and biogeochemistry program was conducted during the early summer of 2012 on the Bird Property.

2.10 Rock Geochemistry

The Bird property is hosted by a poorly exposed, complicated structural zone of previously mapped Jurassic through Tertiary volcanics, sediments and intrusive rocks. Anomalous copper mineralization is hosted by green volcanics with epidote, hematite, quartz, carbonate, manganese, chlorite and pyrite alteration. Fortuitously some of the best copper mineral is associated with a wide zone of fracturing. This fracturing is interpreted to be an expression of a northwest trending fault; the existence of narrow coarse crystal diorite gabbro dikes also provides confidence for this interpretation.

Anomalous copper mineralization is closely associated with a northwest panel of epidote, hematite and pyrite alterations. The exposed zone is in excess of 100 meters wide and extends beyond 4 km. Epidote alteration is the most obvious and important in defining the existence of copper mineralization, especially when accompanied by a reddish coloration.

Rock Geochemistry highlights include:

	Cu (ppm)	Ag (ppm)	Au (ppb)
SAK12-31	1644	2.0	65.6
SAK12-32	2273	1.7	106.7
SAK12-33	103	<0.1	10

2.20 Bio-Geochemistry Program

A limited program of "Bark" sampling was conducted to see if this procedure (process?) would be of value in helping to define mineral potential under extensive overburden. With epidemic mountain pine beetle insect activity affecting lodgepole pine tree populations and heavy recent and historic harvesting; developing a sampling medium is a problem. For this reason

lodgepole pine, spruce and residual spruce were used. Following is a breakdown of results and recommendations for future biogeochemistry.

Preliminary biogeochemistry indicates this procedure is of value in helping develop below cover mineralized outcrop. Lodgepole pine, spruce, residual spruce and residual lodge pine are the species of choice. Bark collection is a simple process that is quickly achieved and can be done in any season of the year. GPS allows for a “drunken walk” approach to determine sample selection. For example, one may prefer sampling trees within draws or depressions relating the geography to structure. Some sample highlights are as follows:

Sample ID	Au (ppb)	Cu (ppm)	Ag (ppm)	Bark Type
B31	0.3	3.18	49	LP Pine
B40	2.2	4.69	5	Spruce
B48	<0.2	6.02	7	LP Pine
B50	<0.2	5.54	15	Spruce

3.00 CONCLUSION

Rock geochemistry has extended known copper mineralization by approximately 4 km. It also has begun to indicate an association between copper and gold, sample SAK12-32, Au 106.7 ppb, Cu 2273 ppm.

Preliminary Bark sample biogeochemistry shows a strong opportunity to help in developing hidden areas for future enhanced exploration work. The biggest concern with this process is forest health and subsequent harvesting reducing the bark collection opportunity.

4.00 STATEMENT OF EXPENDITURES

Rock & Bio-geochemistry
Bird Property

Work performed: Summer 2012 ~~~July 8 – 11th

Craig Kennedy - 4 days @ 500/day (Includes 4x4 vehicle)	\$2000.00
Sara Kennedy - 4 days @ 250/day	1000.00
Acme Labs – 44 bio-geochem samples	1515.00
Acme Labs – 13 rock samples	403.00
Travel & Living Out	1360.00
Craig Kennedy - report preparation and writing	1000.00
Admin Costs	<u>873.36</u>
Total:	<u>\$8151.36</u>

5.00 AUTHOR'S QUALIFICATIONS

As the author of this report I, Craig Kennedy, certify that:

1. I am an independent prospector residing at 2290 Dewolfe Avenue, Kimberley, BC.
2. I have been actively prospecting in the East and West Kootenay districts of BC for the past 33 years and have made my living prospecting for the past 24 years.
3. I have been employed as a professional prospector by major and junior mineral exploration companies.
4. I own and maintain mineral claims in BC and have optioned numerous claims to various exploration companies.

A handwritten signature in black ink that reads "Craig Kennedy". The signature is written in a cursive, slightly slanted style.

Craig Kennedy
Prospector

Appendix #1 – Rock & Biogeochemistry Sample Descriptions

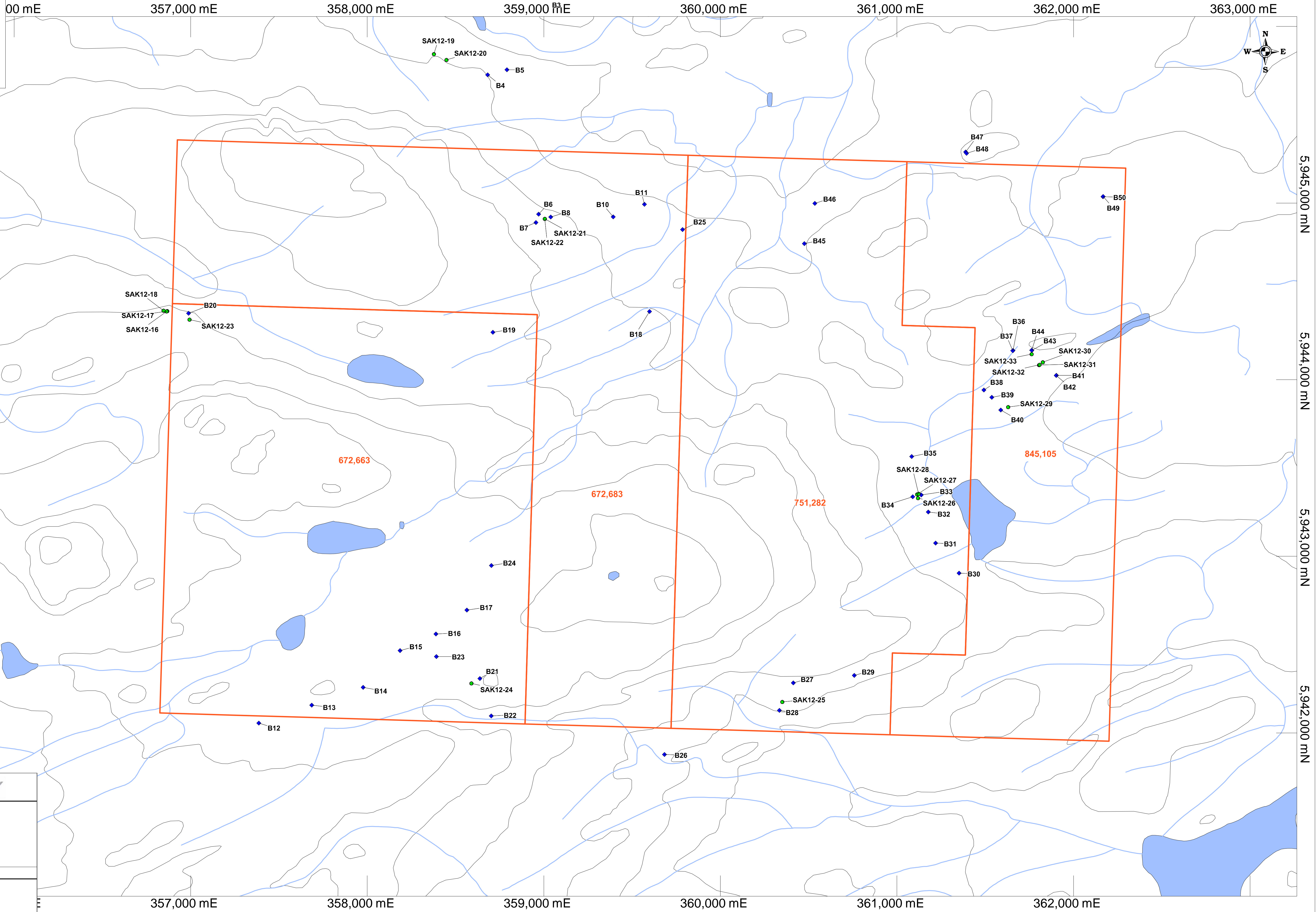
Sample No.	UTM E	UTM N	Property	Description
SAK12-16	356867	5944389	Bird	Green volcanic with frags, mn on fractures with lim, young?
SAK12-17	356863	5944387	Bird	Same as above but lighter green and coming out of structure
SAK12-18	356846	5944391	Bird	Same as above
SAK12-19	358377	5945844	Bird	Silicified rhyolite with lim on fractures and argillic altered
SAK12-20	358448	5945811	Bird	Argillic altered conglomerate with lim and mn
SAK12-21	359005	5944911	Bird	Rhyolite breccia with lim, mn, and live hem?
SAK12-22	359005	5944911	Bird	Same as above
SAK12-23	356993	5944340	Bird	Silicified breccia tuff with hem, jarosite and opal in vugs
SAK12-24	358590	5942281	Bird	Rhyolite tuff slightly altered with lim in vugs
SAK12-25	360350	5942176	Bird	Conglomerate pebble with lim
SAK12-26	361119	5943330	Bird	Lim rich crushed conglomerate
SAK12-27	361114	5943351	Bird	Same as above
SAK12-28	361122	5943354	Bird	Same as above but with qtz and zeolite?
SAK12-29	361629	5943845	Bird	Tuff outcrop with epidote staining, lim and py. Non magnetic
SAK12-30	361826	5944099	Bird	Same as above but more silicified. 60 degree trend
SAK12-31	361805	5944083	Bird	Same as above with micro veining and k altered
SAK12-32	361807	5944085	Bird	Same as above with a 320 degree dip
SAK12-33	361762	5944145	Bird	Same as above

Sample No.	UTM E	UTM N	Property	Description
B1	360176	5946859	Bird	10 inch dry LP pine
B2	360362	5946823	Bird	8 inch dry LP pine
B3	359026	5946123	Bird	8 inch dry LP pine above carb alt zone
B4	358682	5945726	Bird	11 inch dry LP pine by SAK12-20 area
B5	358791	5945755	Bird	10 inch dead LP pine
B6	358971	5944937	Bird	10 inch live LP pine
B7	358955	5944890	Bird	4 inch stunted LP pine
B8	359039	5944921	Bird	8 inch green LP pine
B10	359393	5944922	Bird	6 inch second growth LP pine
B11	359570	5944993	Bird	8 inch second growth LP pine
B12	357386	5942056	Bird	10 inch dry LP pine
B13	357686	5942157	Bird	5 inch dry LP pine
B14	357977	5942258	Bird	5 inch live LP pine
B15	358186	5942466	Bird	8 inch live LP pine
B16	358389	5942560	Bird	5 inch live LP pine
B17	358564	5942696	Bird	5 inch live LP pine
B18	359599	5944386	Bird	12 inch dead LP pine
B19	358712	5944268	Bird	5 inch live LP pine
B20	356988	5944376	Bird	10 inch live LP pine
B21	358638	5942308	Bird	6 inch live LP pine
B22	358702	5942096	Bird	10 inch dead LP pine
B23	358392	5942432	Bird	8 inch live LP pine
B24	358703	5942948	Bird	6 inch green LP pine
B25	359786	5944850	Bird	6 inch green LP pine - second growth
B26	359683	5941878	Bird	10 inch dry LP pine

Sample No.	UTM E	UTM N	Property	Description
B27	360413	5942283	Bird	6 inch green LP pine
B28	360334	5942128	Bird	10 inch green LP pine
B29	360758	5942326	Bird	8 inch dry LP pine
B30	361352	5942905	Bird	8 inch dry LP pine
B31	361219	5943075	Bird	10 inch dry LP pine
B32	361177	5943251	Bird	8 inch dry LP pine
B33	361138	5943347	Bird	10 inch dry LP pine overlaying borrow pit
B34	361089	5943337	Bird	10 inch dry LP pine by swamp
B35	361083	5943565	Bird	8 inch dry LP pine
B36	361657	5944165	Bird	6 inch green LP pine
B37	361656	5944164	Bird	6 inch green spruce
B38	361492	5943942	Bird	5 inch green spruce
B39	361537	5943900	Bird	6 inch green spruce
B40	361588	5943828	Bird	8 inch green spruce
B41	361903	5944025	Bird	6 inch green spruce
B42	361902	5944024	Bird	6 inch dry LP pine
B43	361764	5944166	Bird	5 inch dry LP pine
B44	361763	5944167	Bird	6 inch dry LP pine
B45	360476	5944770	Bird	12 inch live spruce
B46	360535	5944998	Bird	10 inch live spruce
B47	361389	5945289	Bird	6 inch dry LP pine
B48	361394	5945282	Bird	6 inch live LP pine
B49	362168	5945037	Bird	6 inch dry LP pine
B50	362167	5945036	Bird	8 inch green spruce

Legend

- Rock Sample: 2012
Label: Sample ID
- Vegetation Sample: 2012
Label: Sample ID
- KTN Claim



KOOTENAY SILVER INC.

**Bird Property
British Columbia**

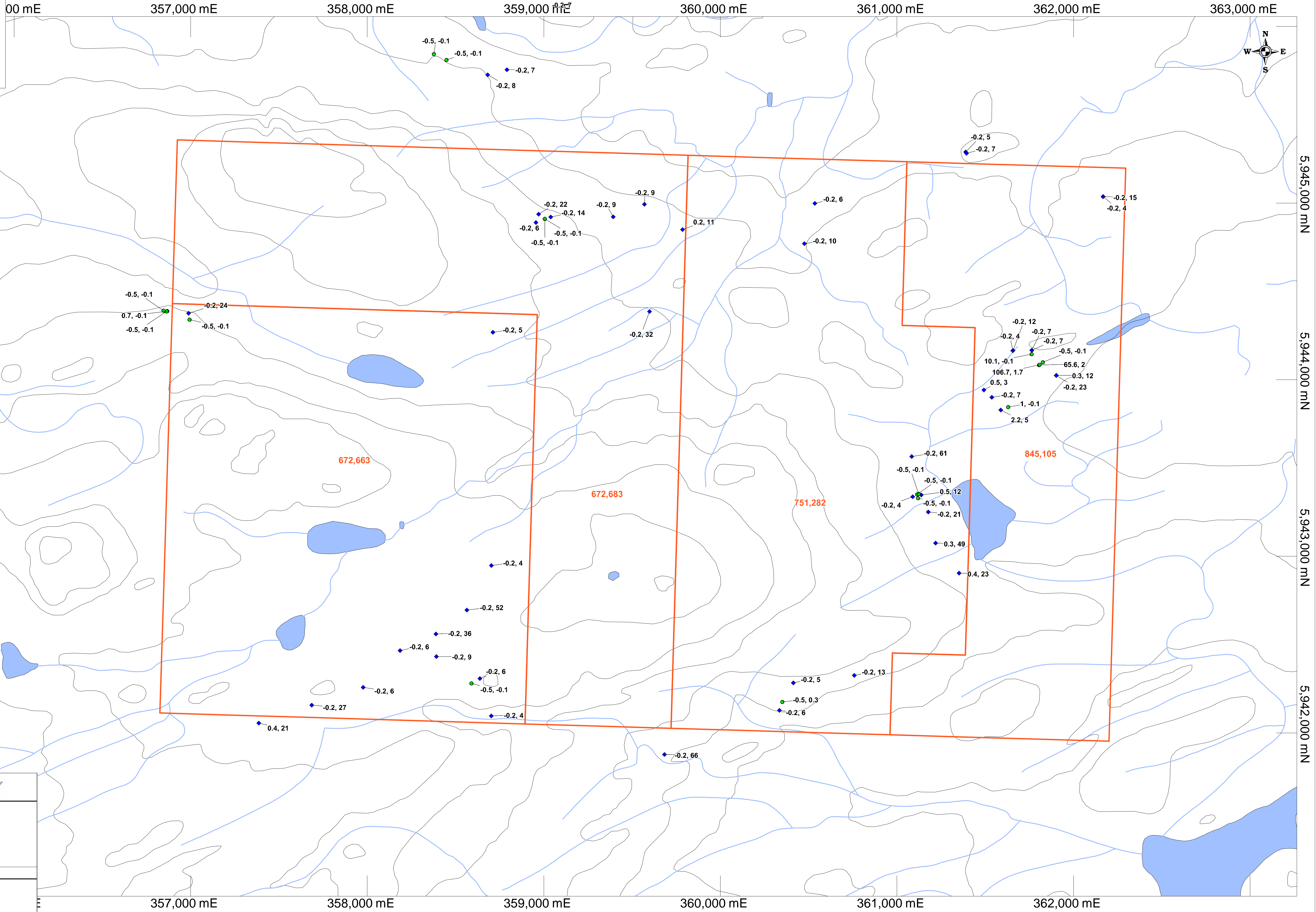
**Rock Sampling
Sample ID**

Date: 9/26/2012
 Author: Curt Huebert
 Office:
 Drawing:
 Scale: 1:10000 Projection: UTM Zone 10 (NAD 83)

0 125 250 500 metres

Legend

- Rock Sample: 2012
Label: Au (ppb), Ag (ppm)
- Vegetation Sample: 2012
Label: Au (ppb), Ag (ppb)
- KTN Claim



KOOTENAY SILVER INC.

**Bird Property
British Columbia**

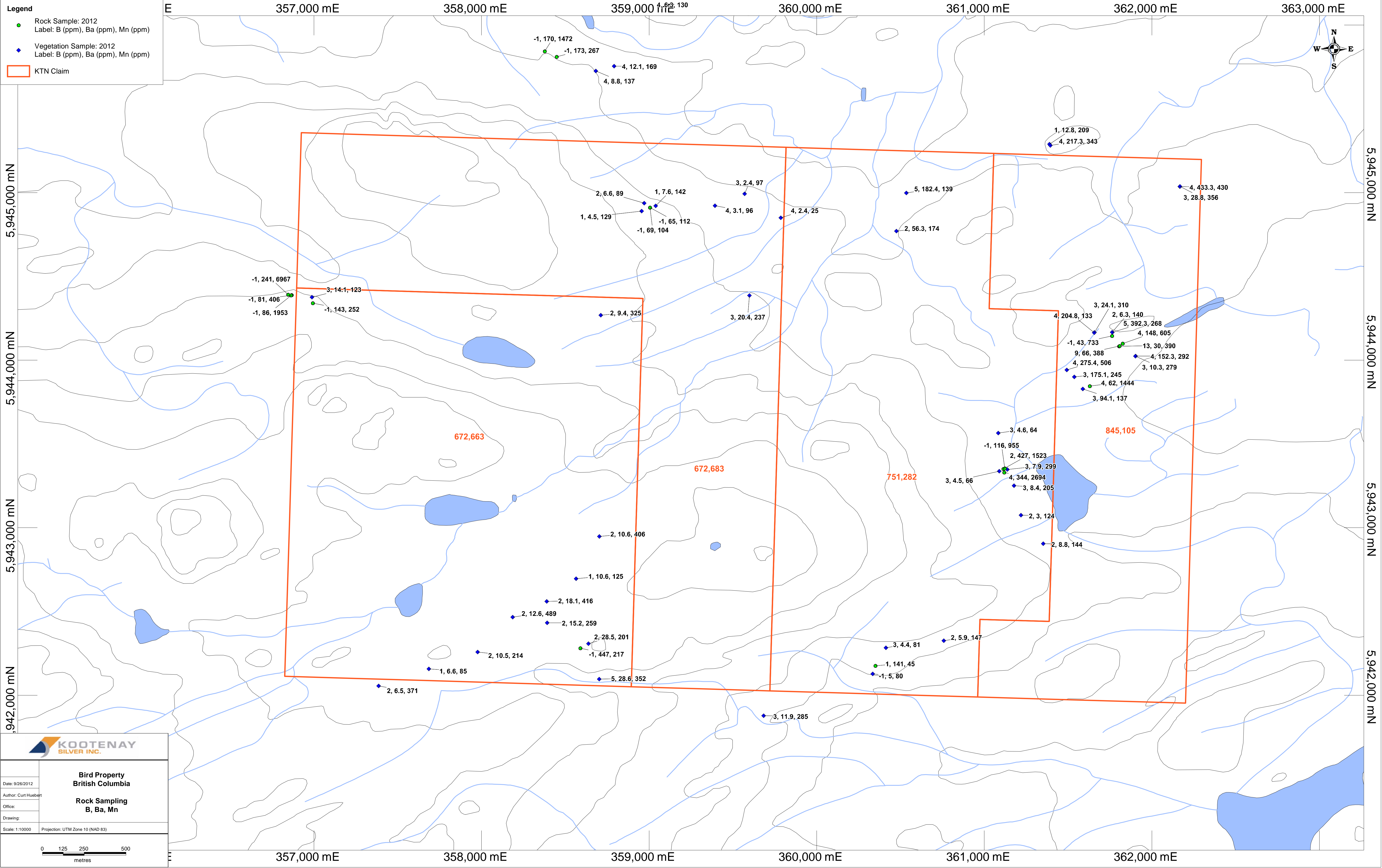
Date: 9/26/2012
Author: Curt Huebert
Office:
Drawing:
Scale: 1:10000 Projection: UTM Zone 10 (NAD 83)

**Rock Sampling
Au, Ag**

0 125 250 500 metres

Legend

- Rock Sample: 2012
Label: B (ppm), Ba (ppm), Mn (ppm)
- Vegetation Sample: 2012
Label: B (ppm), Ba (ppm), Mn (ppm)
- KTN Claim



KOOTENAY SILVER INC.

**Bird Property
British Columbia**

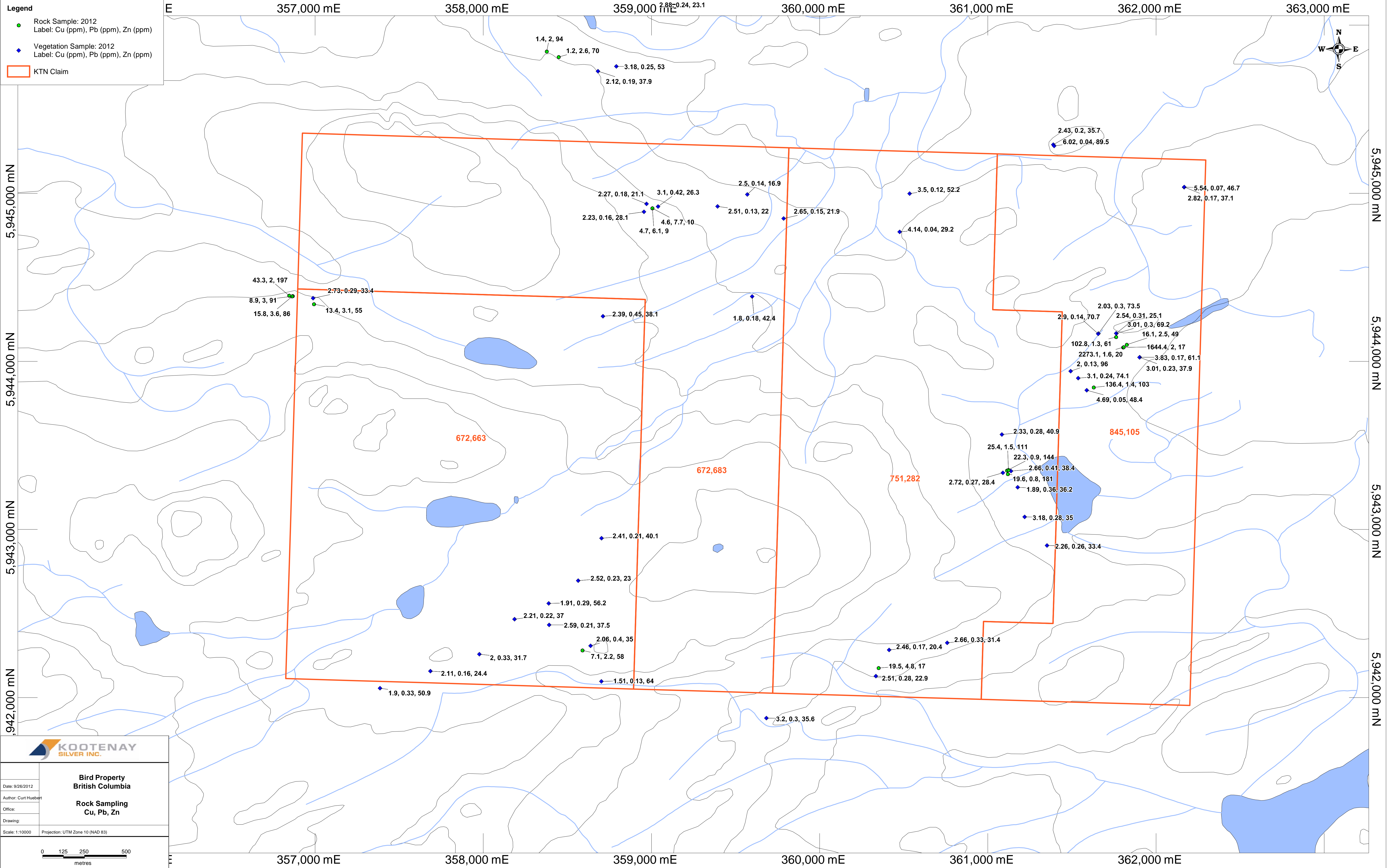
Date: 9/26/2012
Author: Curt Huebert
Office:
Drawing:
Scale: 1:10000 Projection: UTM Zone 10 (NAD 83)

**Rock Sampling
B, Ba, Mn**

0 125 250 500 metres

Legend

- Rock Sample: 2012
Label: Cu (ppm), Pb (ppm), Zn (ppm)
- Vegetation Sample: 2012
Label: Cu (ppm), Pb (ppm), Zn (ppm)
- KTN Claim



KOOTENAY SILVER INC.

**Bird Property
British Columbia**

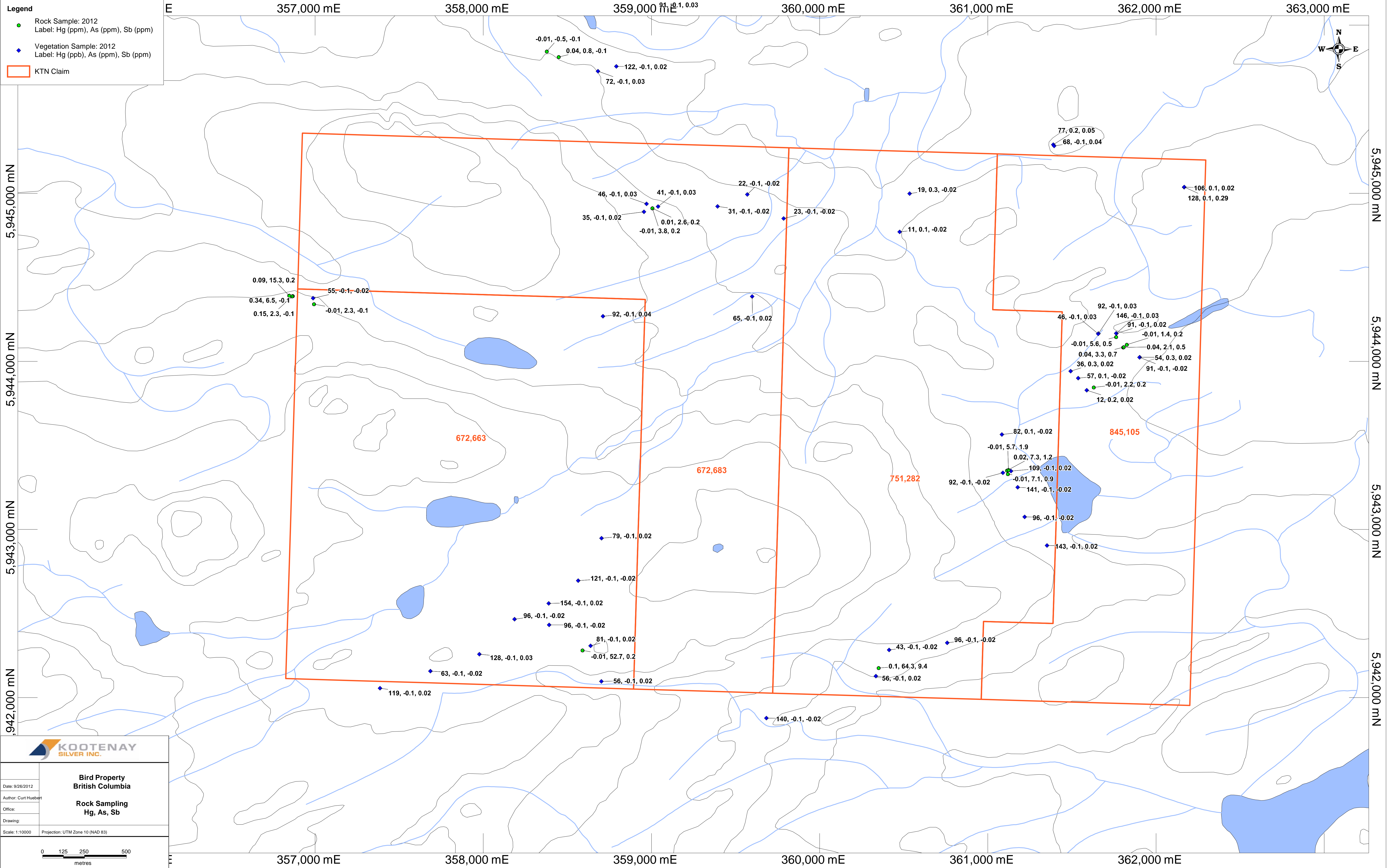
**Rock Sampling
Cu, Pb, Zn**

Date: 9/26/2012
 Author: Curt Huebert
 Office:
 Drawing:
 Scale: 1:10000 Projection: UTM Zone 10 (NAD 83)

0 125 250 500 metres

Legend

- Rock Sample: 2012
Label: Hg (ppm), As (ppm), Sb (ppm)
- Vegetation Sample: 2012
Label: Hg (ppb), As (ppm), Sb (ppm)
- KTN Claim



KOOTENAY SILVER INC.

**Bird Property
British Columbia**

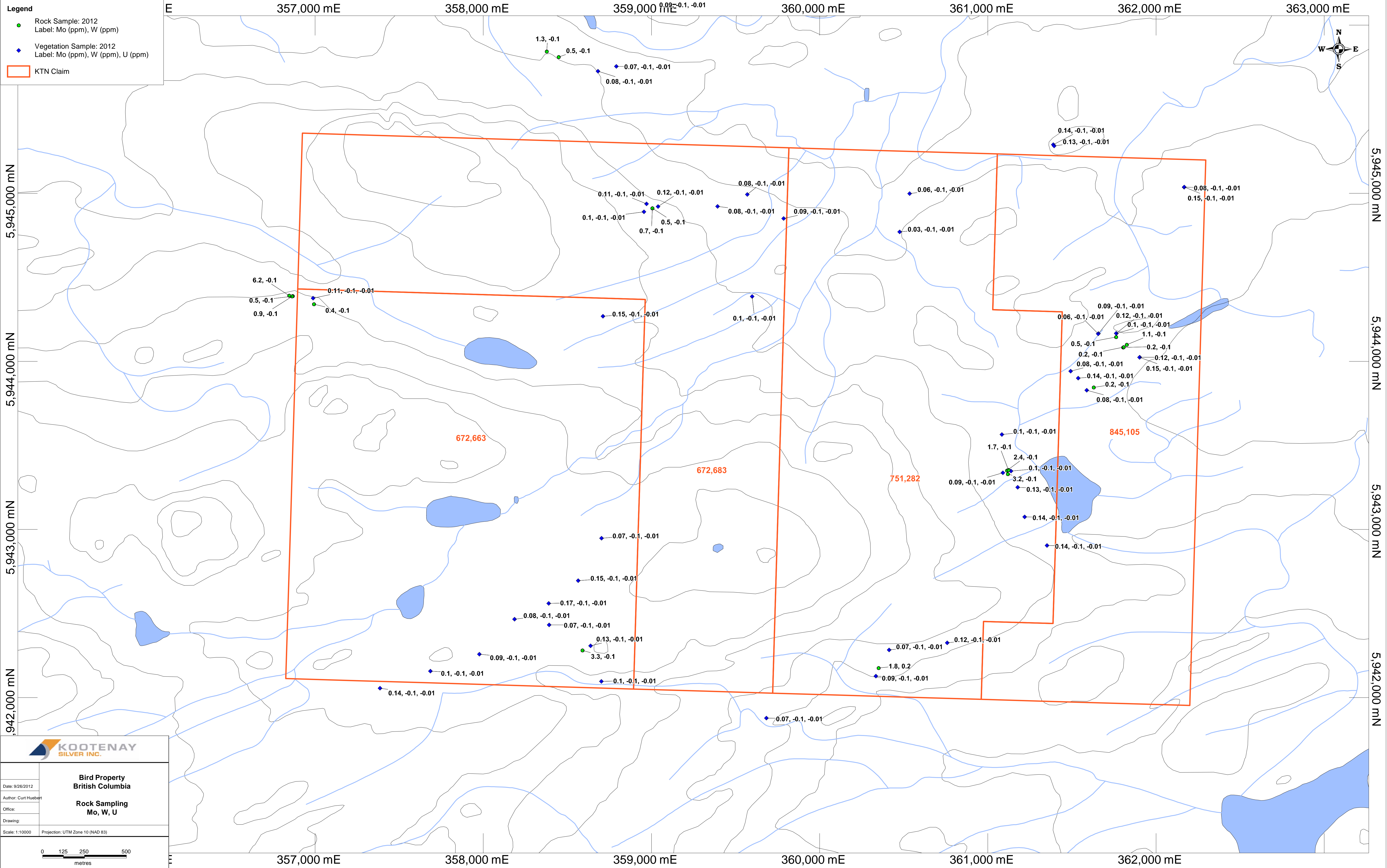
Date: 9/26/2012
Author: Curt Huebert
Office:
Drawing:
Scale: 1:10000 Projection: UTM Zone 10 (NAD 83)

**Rock Sampling
Hg, As, Sb**

0 125 250 500 metres

Legend

- Rock Sample: 2012
Label: Mo (ppm), W (ppm)
- Vegetation Sample: 2012
Label: Mo (ppm), W (ppm), U (ppm)
- KTN Claim



KOOTENAY SILVER INC.

**Bird Property
British Columbia**

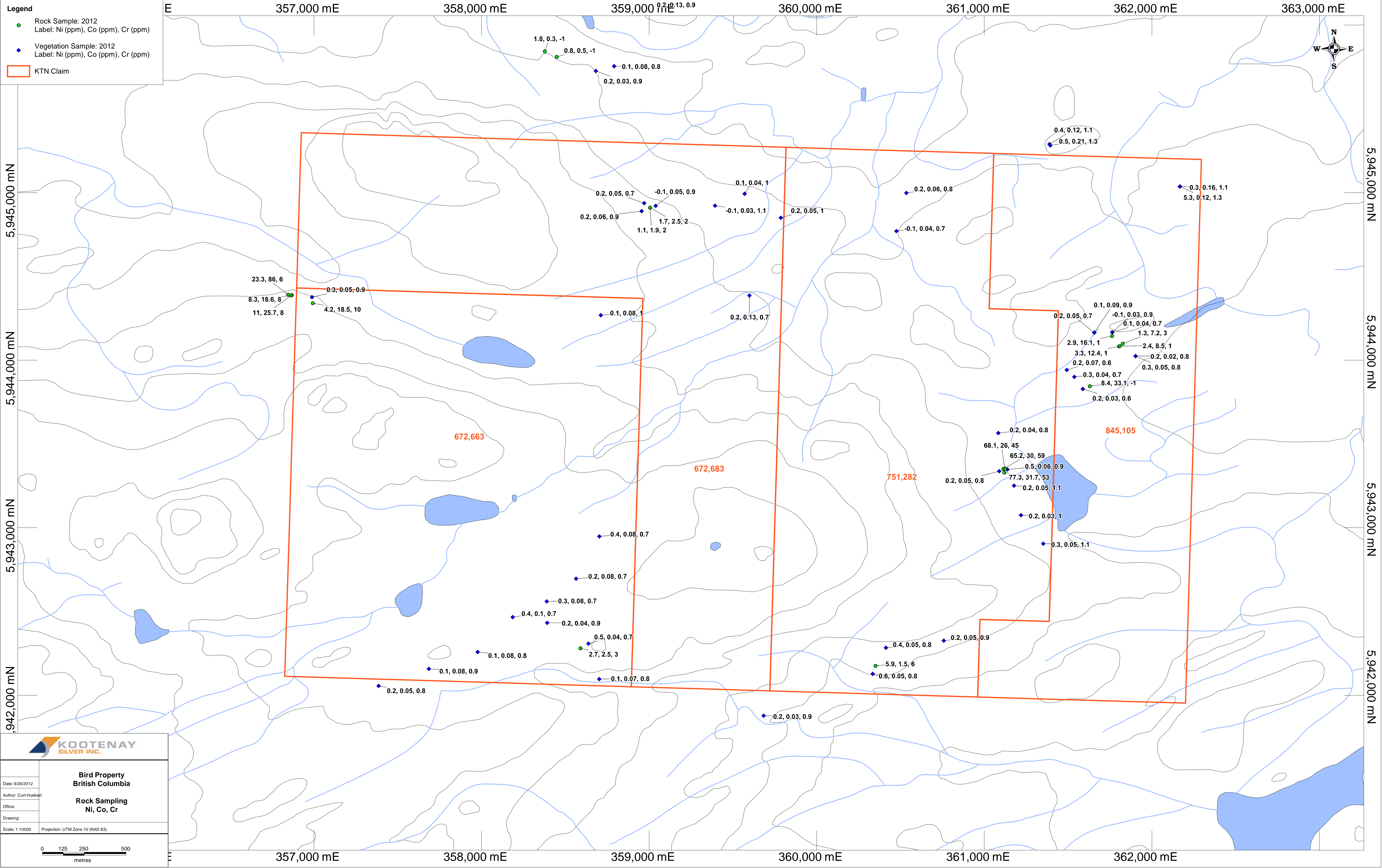
Date: 9/26/2012
Author: Curt Huebert
Office:
Drawing:
Scale: 1:10000 Projection: UTM Zone 10 (NAD 83)

**Rock Sampling
Mo, W, U**

0 125 250 500 metres

Legend

- Rock Sample: 2012
Label: Ni (ppm), Co (ppm), Cr (ppm)
- Vegetation Sample: 2012
Label: Ni (ppm), Co (ppm), Cr (ppm)
- KTN Claim



KOOTENAY SILVER INC.

**Bird Property
British Columbia**

Date: 9/26/2012
Author: Curt Huebert
Office:
Drawing:
Scale: 1:10000 Projection: UTM Zone 10 (NAD 83)

**Rock Sampling
Ni, Co, Cr**

0 125 250 500 metres



1020 Cordova St. East Vancouver BC V6A 4A3 Canada

Acme Analytical Laboratories (Vancouver) Ltd.

www.acmelab.com

Client: Kootenay Silver Inc.
Suite 920 - 1055 W. Hastings St.
Vancouver BC V6E 2E9 Canada

Submitted By: Email Distribution List - Soil & Rock
Receiving Lab: Canada-Vancouver
Received: July 20, 2012
Report Date: August 25, 2012
Page: 1 of 3

CERTIFICATE OF ANALYSIS

VAN12003388.1

CLIENT JOB INFORMATION

Project: Bird
Shipment ID:
P.O. Number
Number of Samples: 50

SAMPLE PREPARATION AND ANALYTICAL PROCEDURES

Table with 6 columns: Method Code, Number of Samples, Code Description, Test Wgt (g), Report Status, Lab. Rows include PM1 (Plant Maceration to 1mm) and 1VE2 (Aqua Regia digestion ICP-MS analysis).

SAMPLE DISPOSAL

DISP-PLP Dispose of Pulp After 90 days

ADDITIONAL COMMENTS

Acme does not accept responsibility for samples left at the laboratory after 90 days without prior written instructions for sample storage or return.

Invoice To: Kootenay Silver Inc.
Suite 920 - 1055 W. Hastings St.
Vancouver BC V6E 2E9
Canada

CC: Craig Kennedy
Tom Kennedy
Sean Kennedy



This report supersedes all previous preliminary and final reports with this file number dated prior to the date on this certificate. Signature indicates final approval; preliminary reports are unsigned and should be used for reference only. All results are considered the confidential property of the client. Acme assumes the liabilities for actual cost of analysis only. Results apply to samples as submitted. ** asterisk indicates that an analytical result could not be provided due to unusually high levels of interference from other elements.



Acme Analytical Laboratories (Vancouver) Ltd.
 1020 Cordova St. East Vancouver BC V6A 4A3 Canada
 Phone (604) 253-3158 Fax (604) 253-1716

www.acmelab.com

Client: **Kootenay Silver Inc.**
 Suite 920 - 1055 W. Hastings St.
 Vancouver BC V6E 2E9 Canada

Project: Bird
 Report Date: August 25, 2012

Page: 2 of 3

Part: 1 of 3

CERTIFICATE OF ANALYSIS

VAN12003388.1

Method	WGHT	1VE	1VE	1VE	1VE	1VE	1VE	1VE	1VE	1VE	1VE	1VE	1VE	1VE	1VE	1VE	1VE	1VE	1VE	1VE	
Analyte	Wgt	Mo	Cu	Pb	Zn	Ag	Ni	Co	Mn	Fe	As	U	Au	Th	Sr	Cd	Sb	Bi	V	Ca	
Unit	g	ppm	ppm	ppm	ppm	ppb	ppm	ppm	ppm	%	ppm	ppm	ppb	ppm	ppm	ppm	ppm	ppm	ppm	%	
MDL	0.01	0.01	0.01	0.01	0.1	2	0.1	0.01	1	0.001	0.1	0.01	0.2	0.01	0.5	0.01	0.02	0.02	2	0.01	
RICE	Prep Blank	<0.01	0.49	1.84	0.29	13.5	<2	<0.1	<0.01	11	0.001	<0.1	<0.01	0.6	<0.01	<0.5	<0.01	<0.02	0.10	<2	<0.01
RICE	Prep Blank	<0.01	0.42	1.63	0.15	12.7	<2	0.1	<0.01	10	<0.001	<0.1	<0.01	<0.2	<0.01	<0.5	<0.01	<0.02	0.03	<2	<0.01
B-01	Vegetation	<0.01	0.09	1.81	1.05	40.3	5	0.3	0.07	279	0.003	<0.1	<0.01	<0.2	<0.01	24.4	0.27	0.03	<0.02	<2	0.65
B-02	Vegetation	<0.01	0.06	1.82	0.25	73.4	8	<0.1	0.01	330	0.001	<0.1	<0.01	<0.2	<0.01	43.6	0.58	0.04	<0.02	<2	1.33
B-03	Vegetation	<0.01	0.09	2.88	0.24	23.1	7	0.2	0.13	130	0.014	<0.1	<0.01	<0.2	<0.01	12.0	0.15	0.03	<0.02	<2	0.50
B-04	Vegetation	<0.01	0.08	2.12	0.19	37.9	8	0.2	0.03	137	0.003	<0.1	<0.01	<0.2	<0.01	22.2	0.19	0.03	<0.02	<2	0.40
B-05	Vegetation	<0.01	0.07	3.18	0.25	53.0	7	0.1	0.08	169	0.002	<0.1	<0.01	<0.2	<0.01	31.9	0.38	0.02	<0.02	<2	0.82
B-06	Vegetation	<0.01	0.11	2.27	0.18	21.1	22	0.2	0.05	89	0.004	<0.1	<0.01	<0.2	<0.01	12.3	0.12	0.03	<0.02	<2	0.41
B-07	Vegetation	<0.01	0.10	2.23	0.16	28.1	6	0.2	0.06	129	<0.001	<0.1	<0.01	<0.2	<0.01	11.5	0.26	0.02	<0.02	<2	0.77
B-08	Vegetation	<0.01	0.12	3.10	0.42	26.3	14	<0.1	0.05	142	0.004	<0.1	<0.01	<0.2	<0.01	15.3	0.10	0.03	<0.02	<2	0.69
B-09	Vegetation	<0.01	0.12	3.32	0.12	28.5	10	<0.1	0.04	69	0.006	<0.1	<0.01	<0.2	<0.01	9.0	0.04	0.03	<0.02	<2	0.19
B-10	Vegetation	<0.01	0.08	2.51	0.13	22.0	9	<0.1	0.03	96	0.006	<0.1	<0.01	<0.2	<0.01	6.0	0.09	<0.02	<0.02	<2	0.30
B-11	Vegetation	<0.01	0.08	2.50	0.14	16.9	9	0.1	0.04	97	0.007	<0.1	<0.01	<0.2	<0.01	4.7	0.08	<0.02	<0.02	<2	0.12
B-12	Vegetation	<0.01	0.14	1.90	0.33	50.9	21	0.2	0.05	371	0.003	<0.1	<0.01	0.4	<0.01	14.4	0.24	0.02	<0.02	<2	0.58
B-13	Vegetation	<0.01	0.10	2.11	0.16	24.4	27	0.1	0.08	85	0.004	<0.1	<0.01	<0.2	<0.01	11.5	0.12	<0.02	<0.02	<2	0.39
B-14	Vegetation	<0.01	0.09	2.00	0.33	31.7	6	0.1	0.08	214	0.004	<0.1	<0.01	<0.2	<0.01	13.6	0.13	0.03	<0.02	<2	0.50
B-15	Vegetation	<0.01	0.08	2.21	0.22	37.0	6	0.4	0.10	489	0.004	<0.1	<0.01	<0.2	<0.01	14.5	0.35	<0.02	<0.02	<2	0.94
B-16	Vegetation	<0.01	0.17	1.91	0.29	56.2	36	0.3	0.08	416	0.004	<0.1	<0.01	<0.2	<0.01	17.6	0.25	0.02	<0.02	<2	0.74
B-17	Vegetation	<0.01	0.15	2.52	0.23	23.0	52	0.2	0.08	125	0.005	<0.1	<0.01	<0.2	<0.01	14.0	0.22	<0.02	<0.02	<2	0.65
B-18	Vegetation	<0.01	0.10	1.80	0.18	42.4	32	0.2	0.13	237	0.008	<0.1	<0.01	<0.2	<0.01	35.9	0.25	0.02	<0.02	<2	1.39
B-19	Vegetation	<0.01	0.15	2.39	0.45	38.1	5	0.1	0.08	325	0.011	<0.1	<0.01	<0.2	<0.01	10.4	0.17	0.04	<0.02	<2	0.57
B-20	Vegetation	<0.01	0.11	2.73	0.29	33.4	24	0.3	0.05	123	0.004	<0.1	<0.01	<0.2	<0.01	24.6	0.20	<0.02	<0.02	<2	0.67
B-21	Vegetation	<0.01	0.13	2.06	0.40	35.0	6	0.5	0.04	201	0.004	<0.1	<0.01	<0.2	<0.01	32.1	0.44	0.02	<0.02	<2	0.87
B-22	Vegetation	<0.01	0.10	1.51	0.13	64.0	4	0.1	0.07	352	0.001	<0.1	<0.01	<0.2	<0.01	37.9	0.60	0.02	<0.02	<2	1.04
B-23	Vegetation	<0.01	0.07	2.59	0.21	37.5	9	0.2	0.04	259	0.003	<0.1	<0.01	<0.2	<0.01	21.2	0.19	<0.02	<0.02	<2	0.72
B-24	Vegetation	<0.01	0.07	2.41	0.21	40.1	4	0.4	0.08	406	0.003	<0.1	<0.01	<0.2	<0.01	19.6	0.43	0.02	<0.02	<2	0.60
B-25	Vegetation	<0.01	0.09	2.65	0.15	21.9	11	0.2	0.05	25	0.015	<0.1	<0.01	0.2	<0.01	8.0	0.30	<0.02	<0.02	<2	0.21
B-26	Vegetation	<0.01	0.07	3.20	0.30	35.6	66	0.2	0.03	285	0.003	<0.1	<0.01	<0.2	<0.01	30.5	0.49	<0.02	<0.02	<2	1.01
B-27	Vegetation	<0.01	0.07	2.46	0.17	20.4	5	0.4	0.05	81	0.003	<0.1	<0.01	<0.2	<0.01	12.9	0.07	<0.02	<0.02	<2	0.52
B-28	Vegetation	<0.01	0.09	2.51	0.28	22.9	6	0.6	0.05	80	0.005	<0.1	<0.01	<0.2	<0.01	10.0	0.07	0.02	<0.02	<2	0.37

This report supersedes all previous preliminary and final reports with this file number dated prior to the date on this certificate. Signature indicates final approval; preliminary reports are unsigned and should be used for reference only.



Acme Analytical Laboratories (Vancouver) Ltd.
 1020 Cordova St. East Vancouver BC V6A 4A3 Canada
 Phone (604) 253-3158 Fax (604) 253-1716

www.acmelab.com

Client: **Kootenay Silver Inc.**
 Suite 920 - 1055 W. Hastings St.
 Vancouver BC V6E 2E9 Canada

Project: Bird
 Report Date: August 25, 2012

Page: 2 of 3

Part: 2 of 3

CERTIFICATE OF ANALYSIS

VAN12003388.1

Method	Analyte	Unit	MDL	1VE P	1VE La	1VE Cr	1VE Mg	1VE Ba	1VE Ti	1VE B	1VE Al	1VE Na	1VE K	1VE W	1VE Sc	1VE TI	1VE S	1VE Hg	1VE Se	1VE Te	1VE Ga	1VE Cs	1VE Ge
				%	ppm	ppm	%	ppm	ppm	ppm	%	%	%	ppm	ppm	ppm	%	ppb	ppm	ppm	ppm	ppm	ppm
				0.001	0.01	0.1	0.001	0.1	1	1	0.01	0.001	0.01	0.1	0.1	0.02	0.01	1	0.1	0.02	0.1	0.005	0.01
RICE	Prep Blank			0.117	<0.01	0.9	0.026	0.2	5	<1	<0.01	<0.001	0.08	<0.1	0.2	<0.02	0.10	<1	0.6	<0.02	<0.1	<0.005	<0.01
RICE	Prep Blank			0.085	<0.01	1.0	0.017	0.1	4	<1	<0.01	<0.001	0.06	<0.1	0.3	<0.02	0.05	<1	0.4	<0.02	<0.1	<0.005	0.01
B-01	Vegetation			0.012	0.03	0.8	0.046	6.7	2	4	0.01	0.001	0.10	<0.1	<0.1	<0.02	<0.01	70	<0.1	<0.02	<0.1	0.006	<0.01
B-02	Vegetation			0.015	0.02	0.4	0.082	27.5	2	7	0.02	0.001	0.09	<0.1	<0.1	<0.02	<0.01	38	0.1	<0.02	<0.1	<0.005	<0.01
B-03	Vegetation			0.011	0.09	0.9	0.027	6.3	6	4	0.03	0.001	0.06	<0.1	0.1	<0.02	0.02	91	<0.1	<0.02	<0.1	0.009	<0.01
B-04	Vegetation			0.015	0.02	0.9	0.039	8.8	2	4	0.03	0.001	0.08	<0.1	0.2	<0.02	<0.01	72	<0.1	<0.02	<0.1	0.009	<0.01
B-05	Vegetation			0.020	0.03	0.8	0.045	12.1	2	4	0.04	0.001	0.09	<0.1	0.2	<0.02	0.04	122	<0.1	<0.02	<0.1	0.006	<0.01
B-06	Vegetation			0.019	0.04	0.7	0.021	6.6	3	2	0.05	0.002	0.04	<0.1	0.2	<0.02	0.05	46	<0.1	<0.02	<0.1	0.007	<0.01
B-07	Vegetation			0.016	0.02	0.9	0.018	4.5	2	1	0.05	0.001	0.03	<0.1	<0.1	<0.02	<0.01	35	<0.1	<0.02	<0.1	<0.005	<0.01
B-08	Vegetation			0.018	0.03	0.9	0.020	7.6	2	1	0.05	0.001	0.03	<0.1	<0.1	<0.02	<0.01	41	<0.1	<0.02	<0.1	0.007	<0.01
B-09	Vegetation			0.028	0.05	1.0	0.032	3.2	4	4	0.01	0.001	0.09	<0.1	0.1	<0.02	<0.01	50	<0.1	<0.02	<0.1	0.009	<0.01
B-10	Vegetation			0.024	0.04	1.1	0.033	3.1	4	4	0.03	<0.001	0.09	<0.1	0.1	<0.02	<0.01	31	<0.1	<0.02	<0.1	<0.005	<0.01
B-11	Vegetation			0.015	0.04	1.0	0.022	2.4	3	3	0.01	<0.001	0.04	<0.1	0.1	<0.02	0.02	22	<0.1	<0.02	<0.1	0.009	0.02
B-12	Vegetation			0.016	0.02	0.8	0.034	6.5	2	2	0.03	0.001	0.12	<0.1	0.2	<0.02	<0.01	119	<0.1	<0.02	<0.1	0.019	<0.01
B-13	Vegetation			0.019	0.03	0.9	0.017	6.6	3	1	0.06	0.001	0.04	<0.1	0.1	<0.02	<0.01	63	<0.1	<0.02	<0.1	0.007	<0.01
B-14	Vegetation			0.015	0.04	0.8	0.022	10.5	3	2	0.04	0.001	0.04	<0.1	0.2	<0.02	<0.01	128	<0.1	<0.02	<0.1	0.009	0.01
B-15	Vegetation			0.017	0.02	0.7	0.022	12.6	2	2	0.05	0.001	0.04	<0.1	0.2	<0.02	<0.01	96	<0.1	<0.02	<0.1	0.009	<0.01
B-16	Vegetation			0.024	0.04	0.7	0.030	18.1	3	2	0.09	0.001	0.03	<0.1	0.2	<0.02	<0.01	154	<0.1	<0.02	<0.1	0.010	<0.01
B-17	Vegetation			0.024	0.04	0.7	0.018	10.6	3	1	0.06	<0.001	0.04	<0.1	0.1	<0.02	<0.01	121	<0.1	<0.02	<0.1	0.013	<0.01
B-18	Vegetation			0.023	0.11	0.7	0.059	20.4	5	3	0.05	0.001	0.08	<0.1	0.2	<0.02	<0.01	65	<0.1	<0.02	<0.1	0.008	<0.01
B-19	Vegetation			0.019	0.14	1.0	0.021	9.4	8	2	0.04	0.002	0.04	<0.1	0.1	<0.02	<0.01	92	<0.1	<0.02	<0.1	0.021	<0.01
B-20	Vegetation			0.017	0.04	0.9	0.029	14.1	3	3	0.06	0.002	0.03	<0.1	0.1	<0.02	<0.01	55	<0.1	<0.02	<0.1	0.007	<0.01
B-21	Vegetation			0.016	0.05	0.7	0.021	28.5	3	2	0.06	0.002	0.03	<0.1	0.1	<0.02	<0.01	81	<0.1	<0.02	<0.1	0.009	<0.01
B-22	Vegetation			0.017	0.03	0.8	0.054	28.6	2	5	0.05	0.002	0.07	<0.1	<0.1	<0.02	<0.01	56	<0.1	<0.02	<0.1	<0.005	<0.01
B-23	Vegetation			0.015	0.04	0.9	0.019	15.2	2	2	0.04	<0.001	0.03	<0.1	0.1	<0.02	<0.01	96	<0.1	<0.02	<0.1	0.009	0.02
B-24	Vegetation			0.017	0.03	0.7	0.038	10.6	2	2	0.06	0.001	0.03	<0.1	0.2	<0.02	<0.01	79	<0.1	<0.02	<0.1	0.018	0.01
B-25	Vegetation			0.020	0.10	1.0	0.042	2.4	8	4	0.01	0.001	0.08	<0.1	0.2	<0.02	<0.01	23	<0.1	<0.02	<0.1	0.011	<0.01
B-26	Vegetation			0.022	0.04	0.9	0.039	11.9	3	3	0.03	0.001	0.08	<0.1	<0.1	<0.02	<0.01	140	<0.1	<0.02	<0.1	0.010	<0.01
B-27	Vegetation			0.021	0.03	0.8	0.032	4.4	2	3	0.05	0.001	0.06	<0.1	0.2	<0.02	<0.01	43	<0.1	<0.02	<0.1	0.008	0.03
B-28	Vegetation			0.014	0.06	0.8	0.022	5.0	2	<1	0.04	0.001	0.04	<0.1	0.2	<0.02	<0.01	56	<0.1	<0.02	<0.1	0.008	0.02

This report supersedes all previous preliminary and final reports with this file number dated prior to the date on this certificate. Signature indicates final approval; preliminary reports are unsigned and should be used for reference only.



Acme Analytical Laboratories (Vancouver) Ltd.
 1020 Cordova St. East Vancouver BC V6A 4A3 Canada
 Phone (604) 253-3158 Fax (604) 253-1716

www.acmelab.com

Client: **Kootenay Silver Inc.**
 Suite 920 - 1055 W. Hastings St.
 Vancouver BC V6E 2E9 Canada

Project: Bird
 Report Date: August 25, 2012

Page: 2 of 3

Part: 3 of 3

CERTIFICATE OF ANALYSIS

VAN12003388.1

Method	Analyte	1VE Hf	1VE Nb	1VE Rb	1VE Sn	1VE Ta	1VE Zr	1VE Y	1VE Ce	1VE In	1VE Re	1VE Be	1VE Li	1VE Pd	1VE Pt
Unit	MDL	ppm	ppm	ppm	ppm	ppm	ppm	ppm	ppm	ppb	ppm	ppm	ppb	ppb	ppb
		0.001	0.01	0.1	0.02	0.001	0.01	0.001	0.01	0.02	1	0.1	0.01	2	1
RICE	Prep Blank	<0.001	<0.01	5.9	<0.02	0.001	<0.01	<0.001	<0.01	<0.02	<1	<0.1	0.04	<2	<1
RICE	Prep Blank	<0.001	<0.01	4.9	<0.02	<0.001	<0.01	<0.001	<0.01	<0.02	<1	<0.1	<0.01	<2	<1
B-01	Vegetation	0.002	<0.01	0.8	0.02	<0.001	0.04	0.017	0.06	<0.02	<1	<0.1	0.01	<2	<1
B-02	Vegetation	0.002	<0.01	0.4	<0.02	<0.001	0.02	0.009	0.03	<0.02	<1	<0.1	0.01	<2	<1
B-03	Vegetation	<0.001	<0.01	0.4	<0.02	0.002	0.15	0.079	0.28	<0.02	<1	<0.1	0.04	<2	<1
B-04	Vegetation	<0.001	<0.01	0.8	<0.02	<0.001	0.03	0.013	0.04	<0.02	<1	<0.1	0.02	<2	<1
B-05	Vegetation	0.002	<0.01	0.6	<0.02	0.001	0.03	0.011	0.05	<0.02	<1	<0.1	0.01	<2	<1
B-06	Vegetation	<0.001	<0.01	0.5	<0.02	<0.001	0.03	0.019	0.08	<0.02	<1	<0.1	0.02	<2	<1
B-07	Vegetation	<0.001	<0.01	0.3	<0.02	<0.001	0.01	0.014	0.03	<0.02	<1	<0.1	0.01	<2	<1
B-08	Vegetation	0.002	<0.01	0.3	<0.02	0.001	0.03	0.020	0.06	<0.02	<1	<0.1	0.02	<2	<1
B-09	Vegetation	0.003	<0.01	0.6	<0.02	0.001	0.04	0.018	0.10	<0.02	<1	<0.1	0.02	<2	<1
B-10	Vegetation	0.003	<0.01	0.6	<0.02	0.002	0.05	0.029	0.11	<0.02	<1	<0.1	0.02	<2	<1
B-11	Vegetation	0.003	<0.01	0.3	<0.02	<0.001	0.04	0.038	0.11	<0.02	<1	<0.1	0.02	<2	<1
B-12	Vegetation	<0.001	<0.01	1.5	<0.02	<0.001	0.03	0.014	0.05	<0.02	<1	<0.1	0.03	<2	<1
B-13	Vegetation	0.003	<0.01	0.5	<0.02	<0.001	0.02	0.017	0.08	<0.02	<1	<0.1	0.02	<2	<1
B-14	Vegetation	<0.001	<0.01	0.6	<0.02	0.001	0.02	0.014	0.07	<0.02	<1	<0.1	0.04	<2	<1
B-15	Vegetation	<0.001	<0.01	1.0	<0.02	0.001	0.02	0.016	0.06	<0.02	<1	<0.1	0.02	<2	<1
B-16	Vegetation	<0.001	<0.01	0.6	<0.02	<0.001	0.02	0.018	0.08	<0.02	<1	<0.1	0.01	<2	<1
B-17	Vegetation	<0.001	<0.01	0.5	<0.02	<0.001	0.04	0.025	0.08	<0.02	<1	<0.1	0.02	<2	<1
B-18	Vegetation	0.008	<0.01	0.8	<0.02	0.001	0.09	0.055	0.20	<0.02	<1	<0.1	0.07	<2	<1
B-19	Vegetation	0.002	<0.01	0.7	<0.02	<0.001	0.12	0.091	0.36	<0.02	<1	<0.1	0.05	<2	<1
B-20	Vegetation	<0.001	<0.01	0.8	<0.02	<0.001	0.05	0.030	0.09	<0.02	<1	<0.1	<0.01	<2	<1
B-21	Vegetation	<0.001	<0.01	0.5	<0.02	<0.001	0.04	0.026	0.10	<0.02	<1	<0.1	0.02	<2	<1
B-22	Vegetation	<0.001	<0.01	0.5	<0.02	<0.001	0.02	0.014	0.04	<0.02	<1	<0.1	<0.01	<2	<1
B-23	Vegetation	0.002	<0.01	0.4	<0.02	<0.001	0.02	0.014	0.07	<0.02	<1	<0.1	<0.01	<2	<1
B-24	Vegetation	<0.001	<0.01	0.7	<0.02	0.001	0.03	0.022	0.07	<0.02	<1	<0.1	<0.01	<2	<1
B-25	Vegetation	0.005	0.01	0.6	<0.02	<0.001	0.12	0.068	0.28	<0.02	<1	<0.1	0.04	<2	<1
B-26	Vegetation	0.003	<0.01	0.9	<0.02	0.001	0.03	0.032	0.08	<0.02	<1	<0.1	0.03	<2	<1
B-27	Vegetation	<0.001	<0.01	0.6	<0.02	<0.001	0.03	0.021	0.07	<0.02	<1	<0.1	0.04	<2	<1
B-28	Vegetation	<0.001	<0.01	0.4	<0.02	<0.001	0.04	0.030	0.12	<0.02	<1	<0.1	0.03	<2	<1

This report supersedes all previous preliminary and final reports with this file number dated prior to the date on this certificate. Signature indicates final approval; preliminary reports are unsigned and should be used for reference only.



Acme Analytical Laboratories (Vancouver) Ltd.

1020 Cordova St. East Vancouver BC V6A 4A3 Canada
 Phone (604) 253-3158 Fax (604) 253-1716

www.acmelab.com

Client: **Kootenay Silver Inc.**
 Suite 920 - 1055 W. Hastings St.
 Vancouver BC V6E 2E9 Canada

Project: Bird
 Report Date: August 25, 2012

Page: 3 of 3

Part: 1 of 3

CERTIFICATE OF ANALYSIS

VAN12003388.1

Method	WGHT	1VE	1VE	1VE	1VE	1VE	1VE	1VE	1VE	1VE	1VE	1VE	1VE	1VE	1VE	1VE	1VE	1VE	1VE	1VE	1VE
Analyte	Wgt	Mo	Cu	Pb	Zn	Ag	Ni	Co	Mn	Fe	As	U	Au	Th	Sr	Cd	Sb	Bi	V	Ca	
Unit	g	ppm	ppm	ppm	ppm	ppb	ppm	ppm	ppm	%	ppm	ppm	ppb	ppm	ppm	ppm	ppm	ppm	ppm	ppm	
MDL	0.01	0.01	0.01	0.01	0.1	2	0.1	0.01	1	0.001	0.1	0.01	0.2	0.01	0.5	0.01	0.02	0.02	2	0.01	
B-29	Vegetation	<0.01	0.12	2.66	0.33	31.4	13	0.2	0.05	147	0.009	<0.1	<0.01	<0.2	0.02	15.7	0.14	<0.02	<0.02	<2	0.64
B-30	Vegetation	<0.01	0.14	2.26	0.26	33.4	23	0.3	0.05	144	0.009	<0.1	<0.01	0.4	<0.01	18.7	0.14	0.02	<0.02	<2	0.54
B-31	Vegetation	<0.01	0.14	3.18	0.28	35.0	49	0.2	0.03	124	0.004	<0.1	<0.01	0.3	<0.01	10.3	0.20	<0.02	<0.02	<2	0.39
B-32	Vegetation	<0.01	0.13	1.89	0.36	36.2	21	0.2	0.05	205	0.007	<0.1	<0.01	<0.2	<0.01	17.5	0.21	<0.02	<0.02	<2	0.53
B-33	Vegetation	<0.01	0.10	2.66	0.41	38.4	12	0.5	0.06	299	0.005	<0.1	<0.01	0.5	<0.01	15.3	0.35	0.02	<0.02	<2	0.43
B-34	Vegetation	<0.01	0.09	2.72	0.27	28.4	4	0.2	0.05	66	0.004	<0.1	<0.01	<0.2	<0.01	14.2	0.21	<0.02	0.03	<2	0.42
B-35	Vegetation	<0.01	0.10	2.33	0.28	40.9	61	0.2	0.04	64	0.006	0.1	<0.01	<0.2	<0.01	20.5	0.23	<0.02	<0.02	<2	0.64
B-36	Vegetation	<0.01	0.09	2.03	0.30	73.5	12	0.1	0.09	310	0.007	<0.1	<0.01	<0.2	<0.01	32.1	0.35	0.03	<0.02	<2	0.76
B-37	Vegetation	<0.01	0.06	2.90	0.14	70.7	4	0.2	0.05	133	0.005	<0.1	<0.01	<0.2	<0.01	81.4	<0.01	0.03	<0.02	<2	1.37
B-38	Vegetation	<0.01	0.08	2.00	0.13	96.0	3	0.2	0.07	506	0.003	0.3	<0.01	0.5	<0.01	135.1	0.09	0.02	<0.02	<2	2.26
B-39	Vegetation	<0.01	0.14	3.10	0.24	74.1	7	0.3	0.04	245	0.005	0.1	<0.01	<0.2	<0.01	86.7	0.06	<0.02	<0.02	<2	1.85
B-40	Vegetation	<0.01	0.08	4.69	0.05	48.4	5	0.2	0.03	137	0.002	0.2	<0.01	2.2	<0.01	39.8	0.01	0.02	<0.02	<2	0.96
B-41	Vegetation	<0.01	0.12	3.83	0.17	61.1	12	0.2	0.02	292	0.004	0.3	<0.01	0.3	<0.01	69.9	0.02	0.02	<0.02	<2	1.65
B-42	Vegetation	<0.01	0.15	3.01	0.23	37.9	23	0.3	0.05	279	0.004	<0.1	<0.01	<0.2	<0.01	19.9	0.15	<0.02	<0.02	<2	0.68
B-43	Vegetation	<0.01	0.10	3.01	0.30	69.2	7	0.1	0.04	268	0.007	<0.1	<0.01	<0.2	<0.01	106.6	0.06	0.02	<0.02	<2	1.59
B-44	Vegetation	<0.01	0.12	2.54	0.31	25.1	7	<0.1	0.03	140	0.006	<0.1	<0.01	<0.2	<0.01	10.0	0.09	0.03	<0.02	<2	0.64
B-45	Vegetation	<0.01	0.03	4.14	0.04	29.2	10	<0.1	0.04	174	0.001	0.1	<0.01	<0.2	<0.01	36.8	0.01	<0.02	<0.02	<2	0.83
B-46	Vegetation	<0.01	0.06	3.50	0.12	52.2	6	0.2	0.06	139	0.010	0.3	<0.01	<0.2	0.01	80.7	0.05	<0.02	<0.02	<2	1.07
B-47	Vegetation	<0.01	0.14	2.43	0.20	35.7	5	0.4	0.12	209	0.016	0.2	<0.01	<0.2	0.01	23.6	0.23	0.05	<0.02	2	1.36
B-48	Vegetation	<0.01	0.13	6.02	0.04	89.5	7	0.5	0.21	343	0.017	<0.1	<0.01	<0.2	<0.01	102.6	0.07	0.04	<0.02	2	1.73
B-49	Vegetation	<0.01	0.15	2.82	0.17	37.1	4	5.3	0.12	356	0.011	0.1	<0.01	<0.2	<0.01	33.3	0.11	0.29	<0.02	<2	1.06
B-50	Vegetation	<0.01	0.08	5.54	0.07	46.7	15	0.3	0.16	430	0.006	0.1	<0.01	<0.2	<0.01	118.1	0.03	0.02	<0.02	<2	1.59



Acme Analytical Laboratories (Vancouver) Ltd.
 1020 Cordova St. East Vancouver BC V6A 4A3 Canada
 Phone (604) 253-3158 Fax (604) 253-1716

www.acmelab.com

Client: **Kootenay Silver Inc.**
 Suite 920 - 1055 W. Hastings St.
 Vancouver BC V6E 2E9 Canada

Project: Bird
 Report Date: August 25, 2012

Page: 3 of 3

Part: 2 of 3

CERTIFICATE OF ANALYSIS

VAN12003388.1

Method	1VE	1VE	1VE	1VE	1VE	1VE	1VE	1VE	1VE	1VE	1VE	1VE	1VE	1VE	1VE	1VE	1VE	1VE	1VE	1VE	
Analyte	P	La	Cr	Mg	Ba	Ti	B	Al	Na	K	W	Sc	TI	S	Hg	Se	Te	Ga	Cs	Ge	
Unit	%	ppm	ppm	%	ppm	ppm	ppm	%	%	%	ppm	ppm	ppm	%	ppb	ppm	ppm	ppm	ppm	ppm	
MDL	0.001	0.01	0.1	0.001	0.1	1	1	0.01	0.001	0.01	0.1	0.1	0.02	0.01	1	0.1	0.02	0.1	0.005	0.01	
B-29	Vegetation	0.018	0.15	0.9	0.026	5.9	6	2	0.04	0.001	0.08	<0.1	0.2	<0.02	<0.01	96	<0.1	<0.02	<0.1	0.019	0.02
B-30	Vegetation	0.022	0.08	1.1	0.044	8.8	6	2	0.03	0.001	0.11	<0.1	0.2	<0.02	<0.01	143	<0.1	<0.02	<0.1	0.016	<0.01
B-31	Vegetation	0.023	0.03	1.0	0.051	3.0	3	2	<0.01	<0.001	0.17	<0.1	<0.1	<0.02	<0.01	96	<0.1	<0.02	<0.1	0.021	<0.01
B-32	Vegetation	0.020	0.06	1.1	0.046	8.4	3	3	0.02	0.001	0.11	<0.1	0.1	<0.02	<0.01	141	<0.1	<0.02	<0.1	0.009	<0.01
B-33	Vegetation	0.017	0.04	0.9	0.033	7.9	3	3	0.03	0.001	0.11	<0.1	<0.1	<0.02	<0.01	109	0.1	<0.02	<0.1	0.010	<0.01
B-34	Vegetation	0.012	0.03	0.8	0.029	4.5	2	3	<0.01	<0.001	0.11	<0.1	0.2	<0.02	0.05	92	<0.1	<0.02	<0.1	0.007	<0.01
B-35	Vegetation	0.015	0.03	0.8	0.050	4.6	3	3	<0.01	<0.001	0.07	<0.1	0.1	<0.02	0.04	82	<0.1	<0.02	<0.1	0.005	<0.01
B-36	Vegetation	0.016	0.05	0.9	0.045	24.1	4	3	0.03	0.001	0.05	<0.1	0.1	<0.02	0.03	92	<0.1	<0.02	<0.1	0.012	<0.01
B-37	Vegetation	0.011	0.05	0.7	0.026	204.8	3	4	<0.01	0.001	0.09	<0.1	<0.1	<0.02	0.01	46	<0.1	<0.02	<0.1	0.022	0.01
B-38	Vegetation	0.011	0.02	0.6	0.022	275.4	2	4	<0.01	<0.001	0.13	<0.1	0.1	<0.02	0.02	36	<0.1	<0.02	<0.1	0.020	0.01
B-39	Vegetation	0.021	0.02	0.7	0.018	175.1	3	3	<0.01	0.001	0.10	<0.1	0.1	<0.02	0.03	57	<0.1	<0.02	<0.1	0.019	<0.01
B-40	Vegetation	0.015	0.01	0.6	0.017	94.1	2	3	<0.01	<0.001	0.10	<0.1	<0.1	<0.02	0.02	12	0.1	<0.02	<0.1	0.005	<0.01
B-41	Vegetation	0.016	0.02	0.8	0.021	152.3	2	4	<0.01	<0.001	0.11	<0.1	<0.1	<0.02	0.03	54	<0.1	<0.02	<0.1	0.040	<0.01
B-42	Vegetation	0.018	0.02	0.8	0.045	10.3	3	3	0.04	0.002	0.10	<0.1	0.2	<0.02	0.03	91	<0.1	<0.02	<0.1	0.015	<0.01
B-43	Vegetation	0.017	0.05	0.7	0.025	392.3	4	5	<0.01	0.002	0.09	<0.1	<0.1	<0.02	0.03	91	0.1	<0.02	<0.1	0.013	<0.01
B-44	Vegetation	0.018	0.05	0.9	0.036	6.3	4	2	0.02	0.002	0.15	<0.1	0.1	<0.02	0.03	146	<0.1	<0.02	<0.1	0.018	0.01
B-45	Vegetation	0.013	0.01	0.7	0.024	56.3	2	2	<0.01	<0.001	0.09	<0.1	0.1	<0.02	0.02	11	0.2	<0.02	<0.1	0.014	<0.01
B-46	Vegetation	0.013	0.05	0.8	0.024	182.4	4	5	<0.01	0.001	0.18	<0.1	<0.1	<0.02	0.03	19	0.1	<0.02	<0.1	0.007	0.02
B-47	Vegetation	0.024	0.17	1.1	0.046	12.8	8	1	0.05	0.002	0.10	<0.1	0.3	<0.02	0.06	77	<0.1	<0.02	<0.1	0.020	<0.01
B-48	Vegetation	0.029	0.14	1.3	0.039	217.3	7	4	0.01	0.002	0.16	<0.1	0.3	<0.02	0.07	68	<0.1	<0.02	<0.1	0.026	<0.01
B-49	Vegetation	0.024	0.08	1.3	0.042	28.8	6	3	0.07	0.002	0.06	<0.1	0.3	<0.02	0.05	128	0.1	<0.02	<0.1	0.013	<0.01
B-50	Vegetation	0.028	0.05	1.1	0.036	433.3	3	4	<0.01	0.002	0.32	<0.1	0.1	<0.02	0.04	106	<0.1	<0.02	<0.1	0.008	<0.01



Acme Analytical Laboratories (Vancouver) Ltd.
 1020 Cordova St. East Vancouver BC V6A 4A3 Canada
 Phone (604) 253-3158 Fax (604) 253-1716

www.acmelab.com

Client: **Kootenay Silver Inc.**
 Suite 920 - 1055 W. Hastings St.
 Vancouver BC V6E 2E9 Canada

Project: Bird
 Report Date: August 25, 2012

Page: 3 of 3

Part: 3 of 3

CERTIFICATE OF ANALYSIS

VAN12003388.1

Method	Analyte	1VE Hf	1VE Nb	1VE Rb	1VE Sn	1VE Ta	1VE Zr	1VE Y	1VE Ce	1VE In	1VE Re	1VE Be	1VE Li	1VE Pd	1VE Pt
Unit		ppm	ppm	ppm	ppm	ppm	ppm	ppm	ppm	ppm	ppb	ppm	ppm	ppb	ppb
MDL		0.001	0.01	0.1	0.02	0.001	0.01	0.001	0.01	0.02	1	0.1	0.01	2	1
B-29	Vegetation	0.003	0.01	0.9	<0.02	<0.001	0.12	0.095	0.33	<0.02	1	<0.1	0.02	<2	<1
B-30	Vegetation	0.002	<0.01	1.2	<0.02	<0.001	0.08	0.046	0.20	<0.02	<1	<0.1	0.04	<2	<1
B-31	Vegetation	<0.001	<0.01	1.8	<0.02	<0.001	0.02	0.022	0.06	<0.02	<1	<0.1	0.02	<2	<1
B-32	Vegetation	0.004	<0.01	0.8	<0.02	<0.001	0.05	0.027	0.11	<0.02	<1	<0.1	0.04	<2	<1
B-33	Vegetation	0.002	<0.01	0.9	<0.02	<0.001	0.05	0.027	0.09	<0.02	<1	<0.1	0.03	<2	<1
B-34	Vegetation	<0.001	<0.01	0.9	0.05	<0.001	0.03	0.013	0.05	<0.02	<1	<0.1	<0.01	<2	<1
B-35	Vegetation	<0.001	<0.01	0.5	0.03	0.001	0.03	0.026	0.07	<0.02	<1	<0.1	<0.01	<2	<1
B-36	Vegetation	<0.001	0.01	0.6	<0.02	<0.001	0.06	0.038	0.15	<0.02	<1	<0.1	0.01	<2	<1
B-37	Vegetation	<0.001	<0.01	0.8	0.03	<0.001	0.04	0.027	0.09	<0.02	<1	<0.1	<0.01	<2	2
B-38	Vegetation	<0.001	<0.01	1.5	<0.02	<0.001	0.02	0.010	0.07	<0.02	<1	<0.1	<0.01	<2	<1
B-39	Vegetation	<0.001	<0.01	0.8	<0.02	0.001	0.03	0.020	0.07	<0.02	1	<0.1	0.01	<2	<1
B-40	Vegetation	0.002	<0.01	1.1	0.03	<0.001	0.01	0.003	0.02	<0.02	<1	<0.1	<0.01	<2	<1
B-41	Vegetation	<0.001	<0.01	1.6	0.03	<0.001	0.04	0.012	0.05	<0.02	<1	<0.1	<0.01	<2	<1
B-42	Vegetation	<0.001	<0.01	1.3	<0.02	<0.001	0.04	0.027	0.09	<0.02	1	<0.1	0.02	<2	<1
B-43	Vegetation	0.004	<0.01	1.0	0.02	<0.001	0.06	0.025	0.08	<0.02	<1	<0.1	0.02	<2	<1
B-44	Vegetation	0.002	<0.01	2.1	0.02	<0.001	0.04	0.028	0.08	<0.02	<1	<0.1	<0.01	<2	<1
B-45	Vegetation	<0.001	<0.01	1.4	<0.02	<0.001	0.02	0.007	0.01	<0.02	1	<0.1	<0.01	<2	<1
B-46	Vegetation	<0.001	<0.01	1.2	<0.02	<0.001	0.06	0.039	0.16	<0.02	<1	<0.1	0.01	<2	1
B-47	Vegetation	0.004	0.02	1.2	0.03	<0.001	0.14	0.101	0.36	<0.02	<1	<0.1	0.05	<2	<1
B-48	Vegetation	0.001	0.02	1.5	0.03	<0.001	0.17	0.076	0.30	<0.02	<1	<0.1	0.04	<2	<1
B-49	Vegetation	<0.001	<0.01	0.8	0.04	<0.001	0.08	0.064	0.23	<0.02	<1	<0.1	0.01	<2	<1
B-50	Vegetation	<0.001	<0.01	2.2	0.02	<0.001	0.05	0.028	0.10	<0.02	<1	<0.1	0.05	<2	<1



Acme Analytical Laboratories (Vancouver) Ltd.

1020 Cordova St. East Vancouver BC V6A 4A3 Canada
 Phone (604) 253-3158 Fax (604) 253-1716

www.acmelab.com

Client: **Kootenay Silver Inc.**
 Suite 920 - 1055 W. Hastings St.
 Vancouver BC V6E 2E9 Canada

Project: Bird
 Report Date: August 25, 2012

Page: 1 of 1

Part: 1 of 3

QUALITY CONTROL REPORT

VAN12003388.1

Method	WGHT	1VE	1VE	1VE	1VE	1VE	1VE	1VE	1VE	1VE	1VE	1VE	1VE	1VE	1VE	1VE	1VE	1VE	1VE	1VE		
Analyte	Wgt	Mo	Cu	Pb	Zn	Ag	Ni	Co	Mn	Fe	As	U	Au	Th	Sr	Cd	Sb	Bi	V	Ca		
Unit	g	ppm	ppm	ppm	ppm	ppb	ppm	ppm	ppm	%	ppm	ppm	ppb	ppm	ppm	ppm	ppm	ppm	ppm	%		
MDL	0.01	0.01	0.01	0.01	0.1	2	0.1	0.01	1	0.001	0.1	0.01	0.2	0.01	0.5	0.01	0.02	0.02	2	0.01		
Pulp Duplicates																						
B-09	Vegetation	<0.01	0.12	3.32	0.12	28.5	10	<0.1	0.04	69	0.006	<0.1	<0.01	<0.2	<0.01	9.0	0.04	0.03	<0.02	<2	0.19	
REP B-09	QC		0.15	3.53	0.12	30.7	12	0.2	0.06	67	0.007	<0.1	<0.01	<0.2	<0.01	8.3	0.03	0.02	<0.02	<2	0.19	
B-35	Vegetation	<0.01	0.10	2.33	0.28	40.9	61	0.2	0.04	64	0.006	0.1	<0.01	<0.2	<0.01	20.5	0.23	<0.02	<0.02	<2	0.64	
REP B-35	QC		0.07	2.43	0.38	42.5	62	0.3	0.04	65	0.006	<0.1	<0.01	<0.2	<0.01	20.9	0.22	0.03	<0.02	<2	0.65	
Reference Materials																						
STD CDV-1	Standard		0.19	8.56	0.92	22.0	6	5.9	1.84	411	0.254	1.1	0.15	0.5	0.57	121.8	0.04	0.05	0.02	7	1.97	
STD CDV-1	Standard		0.17	7.42	1.00	21.9	7	6.1	1.66	385	0.232	1.1	0.15	4.6	0.60	111.9	0.02	0.06	<0.02	6	1.90	
STD CDV-1	Standard		0.22	9.72	0.96	26.7	9	8.0	2.15	475	0.299	1.7	0.18	1.6	0.63	136.9	0.05	0.07	0.03	7	2.17	
STD V16	Standard		1.70	6.54	2.91	39.5	25	7.0	0.99	726	0.390	1.5	<0.01	1.2	<0.01	11.4	0.08	0.09	<0.02	<2	0.32	
STD V16	Standard		1.22	5.56	2.86	38.2	26	6.4	0.91	722	0.326	1.2	<0.01	0.3	<0.01	11.1	0.09	0.08	<0.02	<2	0.30	
STD V16	Standard		1.97	6.79	3.27	42.3	31	8.0	1.06	776	0.374	1.9	<0.01	1.1	0.01	14.9	0.12	0.10	<0.02	2	0.34	
STD CDV-1 Expected			0.2	8.61	1.33	23.3	9	6.4	2	413	0.256	1.3	0.17	2.3	0.61	122	0.04	0.03	0.02	4.2	1.94	
STD V16 Expected			1.6	6.69	3	39.2	32	7.4	1.11	720	0.4125	1.6		0.9		11.2	0.086	0.07			0.3	
BLK	Blank		<0.01	0.05	<0.01	0.3	<2	<0.1	<0.01	<1	<0.001	<0.1	<0.01	<0.2	<0.01	<0.5	<0.01	0.04	<0.02	<2	<0.01	
BLK	Blank		<0.01	0.02	<0.01	<0.1	<2	<0.1	<0.01	<1	<0.001	<0.1	<0.01	<0.2	<0.01	<0.5	<0.01	<0.02	<0.02	<2	<0.01	
BLK	Blank		<0.01	0.03	<0.01	0.2	<2	<0.1	<0.01	<1	<0.001	<0.1	<0.01	<0.2	<0.01	<0.5	<0.01	<0.02	<0.02	<2	<0.01	
BLK	Blank		<0.01	0.06	<0.01	0.6	<2	0.1	<0.01	<1	<0.001	0.2	<0.01	<0.2	<0.01	<0.5	<0.01	0.03	0.02	<2	<0.01	
BLK	Blank		<0.01	0.03	<0.01	0.4	<2	<0.1	<0.01	5	<0.001	<0.1	<0.01	<0.2	<0.01	<0.5	<0.01	<0.02	<0.02	<2	<0.01	
Prep Wash																						
RICE	Prep Blank		<0.01	0.49	1.84	0.29	13.5	<2	<0.1	<0.01	11	0.001	<0.1	<0.01	0.6	<0.01	<0.5	<0.01	<0.02	0.10	<2	<0.01
RICE	Prep Blank		<0.01	0.42	1.63	0.15	12.7	<2	0.1	<0.01	10	<0.001	<0.1	<0.01	<0.2	<0.01	<0.5	<0.01	<0.02	0.03	<2	<0.01



Acme Analytical Laboratories (Vancouver) Ltd.

1020 Cordova St. East Vancouver BC V6A 4A3 Canada
 Phone (604) 253-3158 Fax (604) 253-1716

www.acmelab.com

Client: **Kootenay Silver Inc.**
 Suite 920 - 1055 W. Hastings St.
 Vancouver BC V6E 2E9 Canada

Project: Bird
 Report Date: August 25, 2012

Page: 1 of 1

Part: 2 of 3

QUALITY CONTROL REPORT

VAN12003388.1

Method	1VE	1VE	1VE	1VE	1VE	1VE	1VE	1VE	1VE	1VE	1VE	1VE	1VE	1VE	1VE	1VE	1VE	1VE	1VE	1VE	
Analyte	P	La	Cr	Mg	Ba	Ti	B	Al	Na	K	W	Sc	Tl	S	Hg	Se	Te	Ga	Cs	Ge	
Unit	%	ppm	ppm	%	ppm	ppm	ppm	%	%	%	ppm	ppm	ppm	%	ppb	ppm	ppm	ppm	ppm	ppm	
MDL	0.001	0.01	0.1	0.001	0.1	1	1	0.01	0.001	0.01	0.1	0.1	0.02	0.01	1	0.1	0.02	0.1	0.005	0.01	
Pulp Duplicates																					
B-09	Vegetation	0.028	0.05	1.0	0.032	3.2	4	4	0.01	0.001	0.09	<0.1	0.1	<0.02	<0.01	50	<0.1	<0.02	<0.1	0.009	<0.01
REP B-09	QC	0.029	0.04	1.0	0.033	2.6	4	4	0.01	<0.001	0.09	<0.1	0.2	<0.02	0.01	45	<0.1	<0.02	<0.1	0.008	0.02
B-35	Vegetation	0.015	0.03	0.8	0.050	4.6	3	3	<0.01	<0.001	0.07	<0.1	0.1	<0.02	0.04	82	<0.1	<0.02	<0.1	0.005	<0.01
REP B-35	QC	0.014	0.03	0.9	0.051	4.8	3	3	<0.01	<0.001	0.08	<0.1	<0.1	<0.02	0.05	90	<0.1	<0.02	<0.1	0.007	0.02
Reference Materials																					
STD CDV-1	Standard	0.039	2.17	12.1	0.126	10.7	30	12	0.13	0.005	0.18	<0.1	0.7	<0.02	0.10	38	0.3	<0.02	0.5	0.101	0.03
STD CDV-1	Standard	0.041	2.13	11.1	0.118	8.7	27	13	0.14	0.005	0.17	<0.1	0.6	<0.02	0.01	52	0.2	<0.02	0.5	0.113	0.03
STD CDV-1	Standard	0.049	2.56	14.4	0.144	10.4	34	16	0.15	0.008	0.22	<0.1	0.7	<0.02	0.13	45	0.3	<0.02	0.6	0.126	<0.01
STD V16	Standard	0.054	0.04	305.4	0.055	2.3	13	5	0.05	0.001	0.23	<0.1	0.1	<0.02	0.02	43	0.2	<0.02	0.2	0.043	0.06
STD V16	Standard	0.051	0.04	250.6	0.052	1.8	12	6	0.05	0.002	0.23	<0.1	<0.1	<0.02	<0.01	50	0.1	<0.02	0.1	0.033	<0.01
STD V16	Standard	0.058	0.06	268.8	0.061	2.9	13	5	0.05	0.002	0.27	<0.1	0.2	<0.02	0.01	53	<0.1	<0.02	0.1	0.040	0.04
STD CDV-1 Expected		0.04	2.31	12.1	0.131	8.5	30	12	0.15	0.006	0.18		0.7		0.1	41	0.3	0.04	0.6	0.121	0.03
STD V16 Expected		0.0488	0.05	323.1	0.0525	1.9	12	5	0.0454	0.0015	0.22			0.0177	41			0.2	0.036	0.05	
BLK	Blank	0.001	<0.01	<0.1	<0.001	0.2	<1	<1	<0.01	<0.001	<0.01	<0.1	<0.1	<0.02	<0.01	5	<0.1	<0.02	<0.1	<0.005	0.01
BLK	Blank	0.001	<0.01	<0.1	<0.001	<0.1	<1	<1	<0.01	<0.001	<0.01	<0.1	<0.1	<0.02	0.03	<1	<0.1	<0.02	<0.1	<0.005	<0.01
BLK	Blank	<0.001	<0.01	<0.1	<0.001	<0.1	<1	<1	<0.01	<0.001	<0.01	<0.1	<0.1	<0.02	<0.01	2	<0.1	<0.02	<0.1	<0.005	<0.01
BLK	Blank	0.002	<0.01	<0.1	0.002	0.4	<1	<1	<0.01	<0.001	<0.01	<0.1	<0.1	<0.02	0.05	<1	<0.1	0.03	<0.1	<0.005	<0.01
BLK	Blank	0.002	<0.01	0.1	<0.001	0.5	<1	<1	<0.01	<0.001	<0.01	<0.1	<0.1	<0.02	0.03	<1	<0.1	<0.02	<0.1	<0.005	<0.01
Prep Wash																					
RICE	Prep Blank	0.117	<0.01	0.9	0.026	0.2	5	<1	<0.01	<0.001	0.08	<0.1	0.2	<0.02	0.10	<1	0.6	<0.02	<0.1	<0.005	<0.01
RICE	Prep Blank	0.085	<0.01	1.0	0.017	0.1	4	<1	<0.01	<0.001	0.06	<0.1	0.3	<0.02	0.05	<1	0.4	<0.02	<0.1	<0.005	0.01



Acme Analytical Laboratories (Vancouver) Ltd.

1020 Cordova St. East Vancouver BC V6A 4A3 Canada
 Phone (604) 253-3158 Fax (604) 253-1716

www.acmelab.com

Client: **Kootenay Silver Inc.**
 Suite 920 - 1055 W. Hastings St.
 Vancouver BC V6E 2E9 Canada

Project: Bird
 Report Date: August 25, 2012

Page: 1 of 1

Part: 3 of 3

QUALITY CONTROL REPORT

VAN12003388.1

Method	Analyte	Unit	MDL	1VE Hf	1VE Nb	1VE Rb	1VE Sn	1VE Ta	1VE Zr	1VE Y	1VE Ce	1VE In	1VE Re	1VE Be	1VE Li	1VE Pd	1VE Pt
				ppm	ppm	ppm	ppm	ppm	ppm	ppm	ppm	ppm	ppb	ppm	ppm	ppb	ppb
				0.001	0.01	0.1	0.02	0.001	0.01	0.001	0.01	0.02	1	0.1	0.01	2	1
Pulp Duplicates																	
B-09	Vegetation			0.003	<0.01	0.6	<0.02	0.001	0.04	0.018	0.10	<0.02	<1	<0.1	0.02	<2	<1
REP B-09	QC			0.002	<0.01	0.5	<0.02	<0.001	0.04	0.030	0.10	<0.02	<1	<0.1	0.06	<2	<1
B-35	Vegetation			<0.001	<0.01	0.5	0.03	0.001	0.03	0.026	0.07	<0.02	<1	<0.1	<0.01	<2	<1
REP B-35	QC			<0.001	<0.01	0.5	<0.02	<0.001	0.04	0.025	0.06	<0.02	1	<0.1	<0.01	<2	<1
Reference Materials																	
STD CDV-1	Standard			0.040	0.05	2.4	0.10	<0.001	1.20	1.428	4.27	<0.02	1	<0.1	0.45	<2	<1
STD CDV-1	Standard			0.038	0.05	2.4	0.19	0.001	1.12	1.258	4.22	<0.02	<1	<0.1	0.62	<2	<1
STD CDV-1	Standard			0.038	0.05	2.8	0.09	<0.001	1.32	1.494	4.83	<0.02	1	<0.1	0.61	<2	<1
STD V16	Standard			0.008	0.08	1.6	0.25	<0.001	0.15	0.050	0.07	<0.02	<1	<0.1	0.06	<2	<1
STD V16	Standard			0.004	0.08	1.5	0.22	0.002	0.14	0.036	0.08	<0.02	<1	<0.1	0.10	<2	<1
STD V16	Standard			0.006	0.08	1.9	0.25	<0.001	0.15	0.055	0.12	<0.02	<1	<0.1	0.04	<2	<1
STD CDV-1 Expected				0.046	0.06	2.6	0.08		1.29	1.41	4.35			0.56			
STD V16 Expected				0.006	0.11	1.7	0.23		0.18	0.043	0.1			0.07			
BLK	Blank			<0.001	<0.01	<0.1	<0.02	<0.001	<0.01	<0.001	<0.01	<0.02	<1	<0.1	<0.01	<2	<1
BLK	Blank			<0.001	<0.01	<0.1	<0.02	<0.001	<0.01	<0.001	<0.01	<0.02	<1	<0.1	<0.01	<2	<1
BLK	Blank			<0.001	<0.01	<0.1	<0.02	<0.001	<0.01	<0.001	<0.01	<0.02	<1	<0.1	0.02	<2	<1
BLK	Blank			<0.001	<0.01	<0.1	<0.02	<0.001	<0.01	0.005	<0.01	<0.02	<1	<0.1	<0.01	<2	<1
BLK	Blank			<0.001	<0.01	<0.1	0.02	<0.001	<0.01	<0.001	<0.01	<0.02	<1	<0.1	<0.01	<2	<1
Prep Wash																	
RICE	Prep Blank			<0.001	<0.01	5.9	<0.02	0.001	<0.01	<0.001	<0.01	<0.02	<1	<0.1	0.04	<2	<1
RICE	Prep Blank			<0.001	<0.01	4.9	<0.02	<0.001	<0.01	<0.001	<0.01	<0.02	<1	<0.1	<0.01	<2	<1



1020 Cordova St. East Vancouver BC V6A 4A3 Canada

Acme Analytical Laboratories (Vancouver) Ltd.

www.acmelab.com

Client: Kootenay Silver Inc. Suite 920 - 1055 W. Hastings St. Vancouver BC V6E 2E9 Canada

Submitted By: Jim McDonald
Receiving Lab: Canada-Vancouver
Received: July 20, 2012
Report Date: July 30, 2012
Page: 1 of 2

CERTIFICATE OF ANALYSIS

VAN12003382.1

CLIENT JOB INFORMATION

Project: Bird
Shipment ID:
P.O. Number
Number of Samples: 18

SAMPLE PREPARATION AND ANALYTICAL PROCEDURES

Table with 6 columns: Method Code, Number of Samples, Code Description, Test Wgt (g), Report Status, Lab. Includes rows for R200-250 and 1DX3 methods.

SAMPLE DISPOSAL

DISP-PLP Dispose of Pulp After 90 days
DISP-RJT Dispose of Reject After 90 days

ADDITIONAL COMMENTS

Acme does not accept responsibility for samples left at the laboratory after 90 days without prior written instructions for sample storage or return.

Invoice To: Kootenay Silver Inc. Suite 920 - 1055 W. Hastings St. Vancouver BC V6E 2E9 Canada

CC: Craig Kennedy
Tom Kennedy
Sean Kennedy



This report supersedes all previous preliminary and final reports with this file number dated prior to the date on this certificate. Signature indicates final approval; preliminary reports are unsigned and should be used for reference only. All results are considered the confidential property of the client. Acme assumes the liabilities for actual cost of analysis only. Results apply to samples as submitted. ** asterisk indicates that an analytical result could not be provided due to unusually high levels of interference from other elements.



Acme Analytical Laboratories (Vancouver) Ltd.
 1020 Cordova St. East Vancouver BC V6A 4A3 Canada
 Phone (604) 253-3158 Fax (604) 253-1716

www.acmelab.com

Client: **Kootenay Silver Inc.**
 Suite 920 - 1055 W. Hastings St.
 Vancouver BC V6E 2E9 Canada

Project: Bird
 Report Date: July 30, 2012

Page: 2 of 2

Part: 1 of 2

CERTIFICATE OF ANALYSIS

VAN12003382.1

Method	WGHT	1DX30	1DX30	1DX30	1DX30	1DX30	1DX30	1DX30	1DX30	1DX30	1DX30	1DX30	1DX30	1DX30	1DX30	1DX30	1DX30	1DX30	1DX30	1DX30	1DX30
Analyte	Wgt	Mo	Cu	Pb	Zn	Ag	Ni	Co	Mn	Fe	As	Au	Th	Sr	Cd	Sb	Bi	V	Ca	P	
Unit	kg	ppm	ppm	ppm	ppm	ppm	ppm	ppm	ppm	%	ppm	ppb	ppm	ppm	ppm	ppm	ppm	ppm	%	%	
MDL	0.01	0.1	0.1	0.1	1	0.1	0.1	0.1	1	0.01	0.5	0.5	0.1	1	0.1	0.1	0.1	2	0.01	0.001	
G1	Prep Blank	<0.01	<0.1	3.1	3.4	47	<0.1	2.8	4.1	593	2.06	<0.5	<0.5	6.3	80	<0.1	<0.1	<0.1	39	0.57	0.081
G1	Prep Blank	<0.01	0.1	2.1	3.1	43	<0.1	2.8	3.7	549	1.94	<0.5	<0.5	5.9	75	<0.1	<0.1	<0.1	37	0.55	0.068
SAK12-16	Rock	0.37	0.9	15.8	3.6	86	<0.1	11.0	25.7	1953	9.00	2.3	<0.5	3.6	67	0.6	<0.1	<0.1	256	0.93	0.182
SAK12-17	Rock	0.28	0.5	8.9	3.0	91	<0.1	8.3	18.6	406	4.23	6.5	0.7	4.4	60	0.2	<0.1	<0.1	180	0.75	0.149
SAK12-18	Rock	0.30	6.2	43.3	2.0	197	<0.1	23.3	86.0	6967	22.54	15.3	<0.5	1.1	61	1.1	0.2	<0.1	624	0.50	0.020
SAK12-19	Rock	0.43	1.3	1.4	2.0	94	<0.1	1.8	0.3	1472	2.29	<0.5	<0.5	9.2	22	0.1	<0.1	<0.1	<2	0.20	0.027
SAK12-20	Rock	0.59	0.5	1.2	2.6	70	<0.1	0.8	0.5	267	1.63	0.8	<0.5	5.6	24	<0.1	<0.1	<0.1	2	0.19	0.024
SAK12-21	Rock	0.39	0.5	4.6	7.7	10	<0.1	1.7	2.5	112	0.54	2.6	<0.5	7.6	6	<0.1	0.2	<0.1	4	0.07	0.036
SAK12-22	Rock	0.47	0.7	4.7	6.1	9	<0.1	1.1	1.9	104	0.51	3.8	<0.5	8.0	5	<0.1	0.2	<0.1	4	0.06	0.027
SAK12-23	Rock	0.42	0.4	13.4	3.1	55	<0.1	4.2	18.5	252	1.41	2.3	<0.5	4.4	61	0.3	<0.1	<0.1	74	0.57	0.097
SAK12-24	Rock	0.24	3.3	7.1	2.2	58	<0.1	2.7	2.5	217	2.40	52.7	<0.5	9.5	52	<0.1	0.2	<0.1	20	0.12	0.024
SAK12-25	Rock	0.39	1.8	19.5	4.8	17	0.3	5.9	1.5	45	0.98	64.3	<0.5	0.2	17	<0.1	9.4	<0.1	18	0.03	0.005
SAK12-26	Rock	0.29	3.2	19.6	0.8	181	<0.1	77.3	31.7	2694	16.54	7.1	<0.5	4.8	254	<0.1	0.9	<0.1	176	1.48	0.480
SAK12-27	Rock	0.36	2.4	22.3	0.9	144	<0.1	65.2	30.0	1523	9.20	7.3	<0.5	5.0	486	<0.1	1.2	<0.1	124	1.82	0.529
SAK12-28	Rock	0.56	1.7	25.4	1.5	111	<0.1	68.1	26.0	955	5.78	5.7	<0.5	5.7	119	<0.1	1.9	<0.1	85	1.44	0.336
SAK12-29	Rock	0.42	0.2	136.4	1.4	103	<0.1	8.4	33.1	1444	5.86	2.2	1.0	0.2	47	<0.1	0.2	<0.1	178	0.85	0.111
SAK12-30	Rock	0.47	1.1	16.1	2.5	49	<0.1	1.3	7.2	605	2.63	1.4	<0.5	0.4	64	<0.1	0.2	<0.1	30	0.87	0.068
SAK12-31	Rock	0.42	0.2	1644	2.0	17	2.0	2.4	8.5	390	1.74	2.1	65.6	0.1	147	0.3	0.5	<0.1	62	5.68	0.041
SAK12-32	Rock	0.43	0.2	2273	1.6	20	1.7	3.3	12.4	388	1.97	3.3	106.7	0.1	142	0.3	0.7	<0.1	67	3.97	0.044
SAK12-33	Rock	0.36	0.5	102.8	1.3	61	<0.1	2.9	16.1	733	3.58	5.6	10.1	0.3	83	<0.1	0.5	<0.1	74	1.06	0.109



Acme Analytical Laboratories (Vancouver) Ltd.
 1020 Cordova St. East Vancouver BC V6A 4A3 Canada
 Phone (604) 253-3158 Fax (604) 253-1716

www.acmelab.com

Client: **Kootenay Silver Inc.**
 Suite 920 - 1055 W. Hastings St.
 Vancouver BC V6E 2E9 Canada

Project: Bird
 Report Date: July 30, 2012

Page: 2 of 2

Part: 2 of 2

CERTIFICATE OF ANALYSIS

VAN12003382.1

Method	Analyte	1DX30	1DX30	1DX30	1DX30	1DX30	1DX30	1DX30	1DX30	1DX30	1DX30	1DX30	1DX30	1DX30	1DX30	1DX30	1DX30	1DX30
		La	Cr	Mg	Ba	Ti	B	Al	Na	K	W	Hg	Sc	Tl	S	Ga	Se	Te
Unit		ppm	ppm	%	ppm	%	ppm	%	%	ppm	ppm	ppm	ppm	%	ppm	ppm	ppm	
MDL		1	1	0.01	1	0.001	1	0.01	0.001	0.01	0.01	0.01	0.01	0.05	1	0.5	0.2	
G1	Prep Blank	13	5	0.53	189	0.122	2	1.02	0.109	0.50	0.1	<0.01	2.9	0.3	<0.05	5	<0.5	<0.2
G1	Prep Blank	13	5	0.48	172	0.112	<1	0.98	0.117	0.47	<0.1	<0.01	2.6	0.3	<0.05	5	<0.5	<0.2
SAK12-16	Rock	29	8	0.36	86	0.029	<1	0.81	0.124	0.10	<0.1	0.15	24.2	0.1	<0.05	3	<0.5	<0.2
SAK12-17	Rock	25	8	0.43	81	0.061	<1	1.14	0.165	0.15	<0.1	0.34	20.7	0.3	<0.05	4	<0.5	<0.2
SAK12-18	Rock	27	6	0.40	241	0.019	<1	1.01	0.009	0.05	<0.1	0.09	55.6	1.7	<0.05	6	1.4	<0.2
SAK12-19	Rock	41	<1	0.10	170	0.017	<1	0.51	0.046	0.11	<0.1	<0.01	6.5	<0.1	<0.05	2	0.9	<0.2
SAK12-20	Rock	45	<1	0.12	173	0.011	<1	0.71	0.038	0.13	<0.1	0.04	3.7	<0.1	<0.05	2	<0.5	<0.2
SAK12-21	Rock	24	2	0.02	65	0.002	<1	0.33	0.012	0.30	<0.1	0.01	0.4	<0.1	<0.05	1	<0.5	<0.2
SAK12-22	Rock	24	2	0.02	69	0.002	<1	0.30	0.013	0.27	<0.1	<0.01	0.5	<0.1	<0.05	1	0.6	<0.2
SAK12-23	Rock	25	10	0.10	143	0.023	<1	0.66	0.123	0.15	<0.1	<0.01	12.1	0.3	<0.05	2	0.8	<0.2
SAK12-24	Rock	9	3	0.18	447	0.077	<1	0.57	0.057	0.28	<0.1	<0.01	3.4	0.3	0.11	2	<0.5	<0.2
SAK12-25	Rock	1	6	0.01	141	<0.001	1	0.24	0.006	0.10	0.2	0.10	2.3	<0.1	0.07	<1	8.7	<0.2
SAK12-26	Rock	55	53	0.99	344	0.093	4	1.67	0.326	0.08	<0.1	<0.01	17.0	<0.1	<0.05	8	0.6	<0.2
SAK12-27	Rock	70	59	1.05	427	0.116	2	2.30	0.514	0.18	<0.1	0.02	14.8	0.2	<0.05	10	<0.5	<0.2
SAK12-28	Rock	54	45	1.23	116	0.204	<1	0.84	0.294	0.09	<0.1	<0.01	5.3	<0.1	<0.05	6	1.1	<0.2
SAK12-29	Rock	1	<1	3.22	62	0.274	4	3.43	0.080	0.05	<0.1	<0.01	9.3	<0.1	<0.05	9	<0.5	<0.2
SAK12-30	Rock	4	3	0.75	148	0.119	4	1.96	0.215	0.20	<0.1	<0.01	1.7	<0.1	<0.05	7	0.6	<0.2
SAK12-31	Rock	<1	1	0.55	30	0.074	13	3.77	0.027	0.07	<0.1	0.04	1.8	<0.1	0.15	14	0.9	<0.2
SAK12-32	Rock	1	1	0.56	66	0.099	9	2.93	0.056	0.13	<0.1	0.04	2.4	<0.1	0.22	10	1.1	<0.2
SAK12-33	Rock	2	1	1.25	43	0.186	<1	1.90	0.077	0.06	<0.1	<0.01	3.0	<0.1	0.09	7	<0.5	<0.2



Acme Analytical Laboratories (Vancouver) Ltd.

1020 Cordova St. East Vancouver BC V6A 4A3 Canada

Phone (604) 253-3158 Fax (604) 253-1716

www.acmelab.com

Client: **Kootenay Silver Inc.**
Suite 920 - 1055 W. Hastings St.
Vancouver BC V6E 2E9 Canada

Project: Bird
Report Date: July 30, 2012

Page: 1 of 1

Part: 1 of 2

QUALITY CONTROL REPORT

VAN12003382.1

Method	WGHT	1DX30	1DX30	1DX30	1DX30	1DX30	1DX30	1DX30	1DX30	1DX30	1DX30	1DX30	1DX30	1DX30	1DX30	1DX30	1DX30	1DX30	1DX30	1DX30	1DX30
Analyte	Wgt	Mo	Cu	Pb	Zn	Ag	Ni	Co	Mn	Fe	As	Au	Th	Sr	Cd	Sb	Bi	V	Ca	P	
Unit	kg	ppm	ppm	ppm	ppm	ppm	ppm	ppm	ppm	%	ppm	ppb	ppm	ppm	ppm	ppm	ppm	ppm	%	%	
MDL	0.01	0.1	0.1	0.1	1	0.1	0.1	0.1	1	0.01	0.5	0.5	0.1	1	0.1	0.1	0.1	2	0.01	0.001	
Pulp Duplicates																					
SAK12-23	Rock	0.42	0.4	13.4	3.1	55	<0.1	4.2	18.5	252	1.41	2.3	<0.5	4.4	61	0.3	<0.1	<0.1	74	0.57	0.097
REP SAK12-23	QC		0.4	13.4	2.9	51	<0.1	4.5	18.7	251	1.41	2.2	<0.5	4.2	58	0.3	0.1	<0.1	75	0.57	0.103
Reference Materials																					
STD DS9	Standard		12.9	115.0	126.7	309	1.9	38.9	8.2	591	2.42	27.2	120.2	7.3	76	2.7	6.0	7.4	41	0.76	0.089
STD DS9 Expected			12.84	108	126	317	1.83	40.3	7.6	575	2.33	25.5	118	6.38	69.6	2.4	4.94	6.32	40	0.7201	0.0819
BLK	Blank		<0.1	0.2	<0.1	<1	<0.1	<0.1	<0.1	<1	<0.01	<0.5	<0.5	<0.1	<1	<0.1	<0.1	<0.1	<2	<0.01	<0.001
Prep Wash																					
G1	Prep Blank	<0.01	<0.1	3.1	3.4	47	<0.1	2.8	4.1	593	2.06	<0.5	<0.5	6.3	80	<0.1	<0.1	<0.1	39	0.57	0.081
G1	Prep Blank	<0.01	0.1	2.1	3.1	43	<0.1	2.8	3.7	549	1.94	<0.5	<0.5	5.9	75	<0.1	<0.1	<0.1	37	0.55	0.068



Acme Analytical Laboratories (Vancouver) Ltd.

1020 Cordova St. East Vancouver BC V6A 4A3 Canada

Phone (604) 253-3158 Fax (604) 253-1716

www.acmelab.com

Client: **Kootenay Silver Inc.**
Suite 920 - 1055 W. Hastings St.
Vancouver BC V6E 2E9 Canada

Project: Bird
Report Date: July 30, 2012

Page: 1 of 1

Part: 2 of 2

QUALITY CONTROL REPORT

VAN12003382.1

Method		1DX30	1DX30	1DX30	1DX30	1DX30	1DX30	1DX30	1DX30	1DX30	1DX30	1DX30	1DX30	1DX30	1DX30	1DX30	1DX30	1DX30
Analyte		La	Cr	Mg	Ba	Ti	B	Al	Na	K	W	Hg	Sc	Tl	S	Ga	Se	Te
Unit		ppm	ppm	%	ppm	%	ppm	%	%	%	ppm	ppm	ppm	ppm	%	ppm	ppm	ppm
MDL		1	1	0.01	1	0.001	1	0.01	0.001	0.01	0.1	0.01	0.1	0.1	0.05	1	0.5	0.2
Pulp Duplicates																		
SAK12-23	Rock	25	10	0.10	143	0.023	<1	0.66	0.123	0.15	<0.1	<0.01	12.1	0.3	<0.05	2	0.8	<0.2
REP SAK12-23	QC	26	9	0.10	138	0.025	<1	0.66	0.123	0.15	<0.1	0.02	12.2	0.3	<0.05	2	0.5	<0.2
Reference Materials																		
STD DS9	Standard	14	125	0.65	302	0.120	<1	0.98	0.086	0.40	3.2	0.23	2.4	5.5	0.18	5	5.6	5.1
STD DS9 Expected		13.3	121	0.6165	295	0.1108		0.9577	0.0853	0.395	2.89	0.2	2.5	5.3	0.1615	4.59	5.2	5.02
BLK	Blank	<1	<1	<0.01	<1	<0.001	<1	<0.01	<0.001	<0.01	<0.1	<0.01	<0.1	<0.1	<0.05	<1	<0.5	<0.2
Prep Wash																		
G1	Prep Blank	13	5	0.53	189	0.122	2	1.02	0.109	0.50	0.1	<0.01	2.9	0.3	<0.05	5	<0.5	<0.2
G1	Prep Blank	13	5	0.48	172	0.112	<1	0.98	0.117	0.47	<0.1	<0.01	2.6	0.3	<0.05	5	<0.5	<0.2