

2012

PROSPECTING REPORT
“Silver Salam Property”

EVENT # 5411780 TENURE # 537127

Tenure Name: GPEX CV Silver Salam

Coquihalla Region
New Westminster Mining Division
Map 092H

Central Coordinate Reference
121° 14' 42.0" W Longitude – 49° 29' 58.9" N Latitude

Prepared by

William Larry Amey
FMC 145191

for

Tenure Owner
Dave Reginald Chamberlain
FMC 206188

October 22, 2012

INDEX

Page	i.....	Copy of Tenure Renewal
	1.....	Cover Page
	2.....	Index
	3.....	Introduction / Location & Access / Summary Continued.
	4.....	Work Evaluation & Cost Statement Attending Parties & Qualifications / Affidavit
	5.....	General Location Reference Map - Map 1
	6.....	Work Area Map - Map 2
	7.....	Google Earth Map - Map 3
	8.....	Contour Map - Map 4

Note: Unless otherwise referenced, map submissions are enhanced excerpts from the BC Ministry's Provincial Mapping System. Scale as that shown.

Introduction

The Silver Salam mineral property, # 537127, a three cell claim comprising 62.84 hectares, was staked to investigate precious metal potential along that sector of Ladner Creek. The tenure lies adjacent to the Hozameen Fault, a gold bearing Serpentine structure more commonly known as the Coquihalla Gold Belt. The claim area has received intermittent prospecting over the years, with the more meaningful being that conducted on the Camp 1 and Camp 2 claims by the Carolin Mine Ltd., in the early 1970's. The Emancipation, of which lies slightly to the west, had also received limited exploration work on a portion of the ground now covered by this tenure. Previous reports indicate the property may hold good potential for Au and Ag.

The area is underlain by Lower-Middle Jurassic Ladner Group metasediments comprised mainly of fissile argillite, slate, black carbonaceous argillite, and siltstone with some coarser bands. The bedding is parallel to the fissility and locally trends 145 degrees and dips 70 degrees southwest. The argillite hosts disseminated pyrite and pyrrhotite with minor crosscutting sulphide veinlets also comprised of pyrite and pyrrhotite. Quartz veins are common, ranging between 0.3 to 15 centimetres in width. The quartz veins are generally parallel to the fissility and host pyrite, pyrrhotite and arsenopyrite. (MINFILE Record No 092HSW107).

Location & Access

The Silver Salam claim is situated 12 kilometers east-northeast of Hope, BC, north of the confluence of Ladner Creek with the Coquihalla River. Access to the general claim area is gained via BC Highway #5 (the Coquihalla Highway), which leads northeast from Hope toward Merritt, BC. The claim may be easily accessed from the Carolin Mine Exit along Hwy 5, via the gravel road striking upstream along the Coquihalla River, thence westerly along Ladner Creek from its merge with the Coquihalla River, terminating approximately ½ kilometre upstream from the old train trestle.

Summary & Conclusion

Work on the Silver Salam property was conducted on October 1, 2012, over the traverse illustrated on Map 2, hereto attached. During the previous fiscal program, outcrops and float on the slope above Ladner Creek were examined for mineralization indicative to precious metals. Exposed quartz veining in a few of the outcrops bore heavy sulphide staining, however, of the samples taken and specimens thereof examined under microscope, visible PMs were not observed. From other reports in the area, such as those of the Camp Claims and that of Jo Shearer, it was felt further exploration of this general location would be prudent. Rock samples were randomly collected during the current reporting period, along the traverse indicated on Map 2. In first appearance to the unaided eye, no native metals were observed. Yet there appeared interesting staining on two of the samples. In that there remains a backlog of samples from other 2012 exploration projects still awaiting closer examination, specimens collected on the Silver Salam property during this program, have not yet been examined in detail. However, when this is effected, and where the results thereof are deemed worthy of mention, a Supplement to this report will be submitted.

The tenure was renewed for a successive term to further examine of a possible transition (?fracture) zone in the underlying geology.

Work Evaluation & Cost Statement

Dave Chamberlain	Oct 1, 2012	<i>1 day</i>	\$ 400.00
Supervisory – Larry Amey	Oct 1, 2012	<i>1 day</i>	\$ 500.00
Meal Costs			\$ 21.20
Vehicle Expenses (41 km one way x \$1.60 km, all in)			\$ 65.60
Report Preparation			\$ 100.00
		Total	\$ 1,086.80

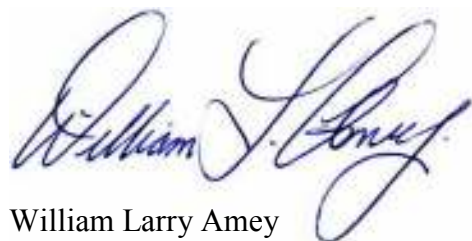
Attending Parties & Qualifications:

Dave Chamberlain
6 years prospecting experience for precious metals and gemstones, self-employed masonry contractor, web designer, cartography, extensive researcher, outdoorsman and alpine hiker.

Larry Amey
31 years placer and hardrock exploration experience – extensive (in-depth) research into mineralogy and deposit profiles. Post glacial terrain physiology, geological formations, and comparative geosciences modeling. Intermediate studies in atmogeology; biogeology & hydrology. Advanced skills in cartography and digital data analysis.

Report Date – October 22, 2012

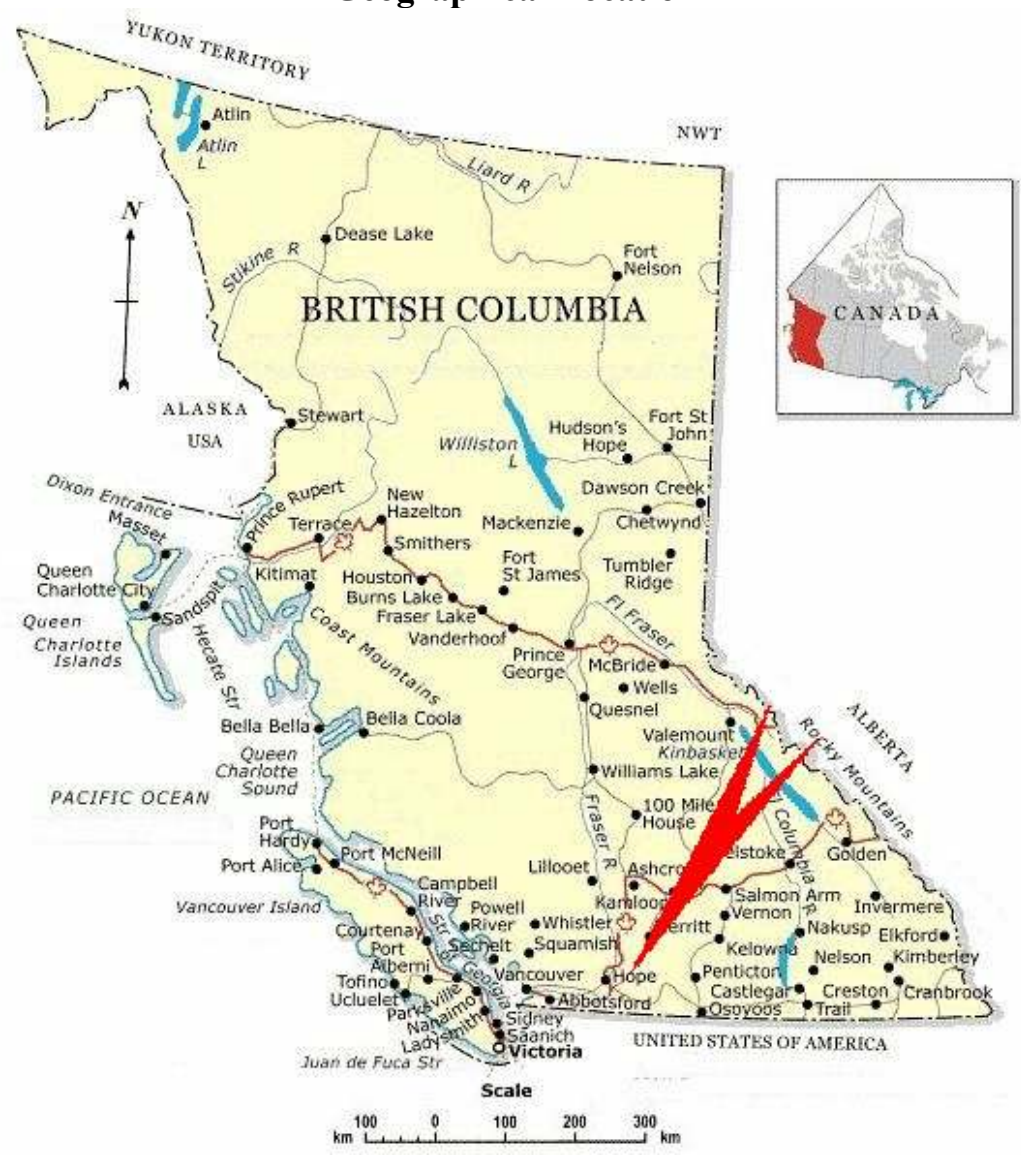
Prepared for and on behalf of,
Dave R. Chamberlain FMC 206188



William Larry Amey
FMC 145191

REFERENCE MAP 1

Geographical Location



REFERENCE MAP 2

Exploration Location



Scale 1:6,000
Map 092H Excerpt
Tenure Coordinate Reference
121° 14' 42.0" W Longitude – 49° 29' 58.9" N Latitude

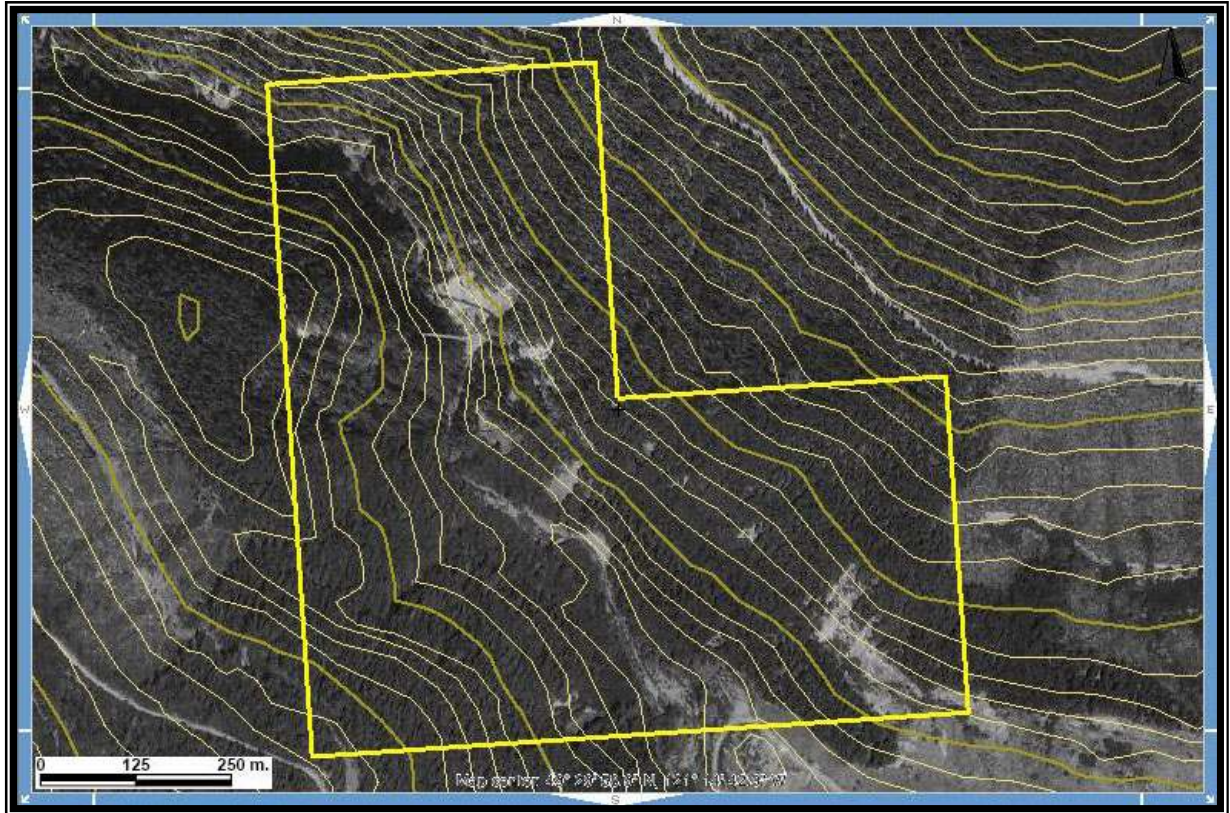
REFERENCE MAP 3

Exploration Location



REFERENCE MAP 4

Contour Map



Scale 1: 6,000
Map 092H Excerpt
Tenure Coordinate Reference
121° 14' 42.0" W Longitude – 49° 29' 58.9" N Latitude