

Ministry of Energy and Mines
BC Geological Survey

Assessment Report
Title Page and Summary

TYPE OF REPORT [type of survey(s)]: Technical Work- Prospecting

TOTAL COST: \$1,200.00

AUTHOR(S): Randy Marko

SIGNATURE(S): 

NOTICE OF WORK PERMIT NUMBER(S)/DATE(S): August 14, August 18

YEAR OF WORK: 2012

STATEMENT OF WORK - CASH PAYMENTS EVENT NUMBER(S)/DATE(S): Event # 5407345 September 26, 2012

PROPERTY NAME: P.M.HOLDINGS 1

CLAIM NAME(S) (on which the work was done): P.M. HOLDINGS 1

COMMODITIES SOUGHT: Silver, Copper, REE

MINERAL INVENTORY MINFILE NUMBER(S), IF KNOWN:

MINING DIVISION: Omineca

NTS/BCGS: 093M/013

LATITUDE: 55 ° 6 '13.9 " LONGITUDE: 127 ° 31 '13.0 " (at centre of work)

OWNER(S):

1) Randy Marko

2) Vernon Palmer

MAILING ADDRESS:

4723 Morris Rd. Telkwa, B.C. V0J-2X3

c/o 4723 Morris Rd. Telkwa, B.C. V0J-2X3

OPERATOR(S) [who paid for the work]:

1) Randy Marko

2)

MAILING ADDRESS:

4723 Morris Rd. Telkwa, B.C. V0J-2X3

PROPERTY GEOLOGY KEYWORDS (lithology, age, stratigraphic structure, alteration, mineralization, size and attitude):

rocher deboule late cretaceous granodiorite pyrite chalcopyrite

REFERENCES TO PREVIOUS ASSESSMENT WORK AND ASSESSMENT REPORT NUMBERS: 093M061 BCGS minfile

TYPE OF WORK IN THIS REPORT	EXTENT OF WORK (IN METRIC UNITS)	ON WHICH CLAIMS	PROJECT COSTS APPORTIONED (incl. support)
GEOLOGICAL (scale, area)			
Ground, mapping			
Photo interpretation			
GEOPHYSICAL (line-kilometres)			
Ground			
Magnetic			
Electromagnetic			
Induced Polarization			
Radiometric			
Seismic			
Other			
Airborne			
GEOCHEMICAL (number of samples analysed for...)			
Soil			
Silt			
Rock			
Other			
DRILLING (total metres; number of holes, size)			
Core			
Non-core			
RELATED TECHNICAL			
Sampling/assaying	2 assays for basic elements/REE	P.M. HOLDINGS 1	\$100.00
Petrographic			
Mineralographic			
Metallurgic			
PROSPECTING (scale, area)	200m X 400m	P.M. HOLDINGS 1	\$1,100.00
PREPARATORY / PHYSICAL			
Line/grid (kilometres)			
Topographic/Photogrammetric (scale, area)			
Legal surveys (scale, area)			
Road, local access (kilometres)/trail			
Trench (metres)			
Underground dev. (metres)			
Other			
TOTAL COST:			\$1,200.00

Prospecting Report

On the

**P.M. Holdings 1 Claim
(Sultana Mine Area, Boulder Creek)**

Omineca Mining Division

93M/013

**UTM Zone 9N
6106907N 594801E**

**55°6'3.3" North Latitude
127°31'11.5" West Longitude**

By

Randy Marko

November 2012

Table of Contents

List of Tables	1
List of Figures	1
Appendices	1
Introduction	2
Location and Access	2
Physiography, Climate and Vegetation	2
Claim and Ownership	4
Exploration History	6
Regional Geological Setting, Property Geology and Mineralization	6
Work Completed 2012	8
Rock Geochemistry	9
Results	9
Conclusions	10
Appendices	11-23
Qualifications	24
Bibliography	25
Detailed Cost Statement	26

List of Tables

Table 1 Claim Status

Table 2 Results

List of Figures

Figure 1 Location Map

Figure 2 Claim Location Map

Figure 3 Sample Locations

Appendices

Appendix I Analytical Certificates

Introduction

This prospecting report is a compilation of information and observations from two visits to the P.M. Holdings 1 claim by Randy Marko and Len Maillot on the dates of August 14 and August 18, 2012.

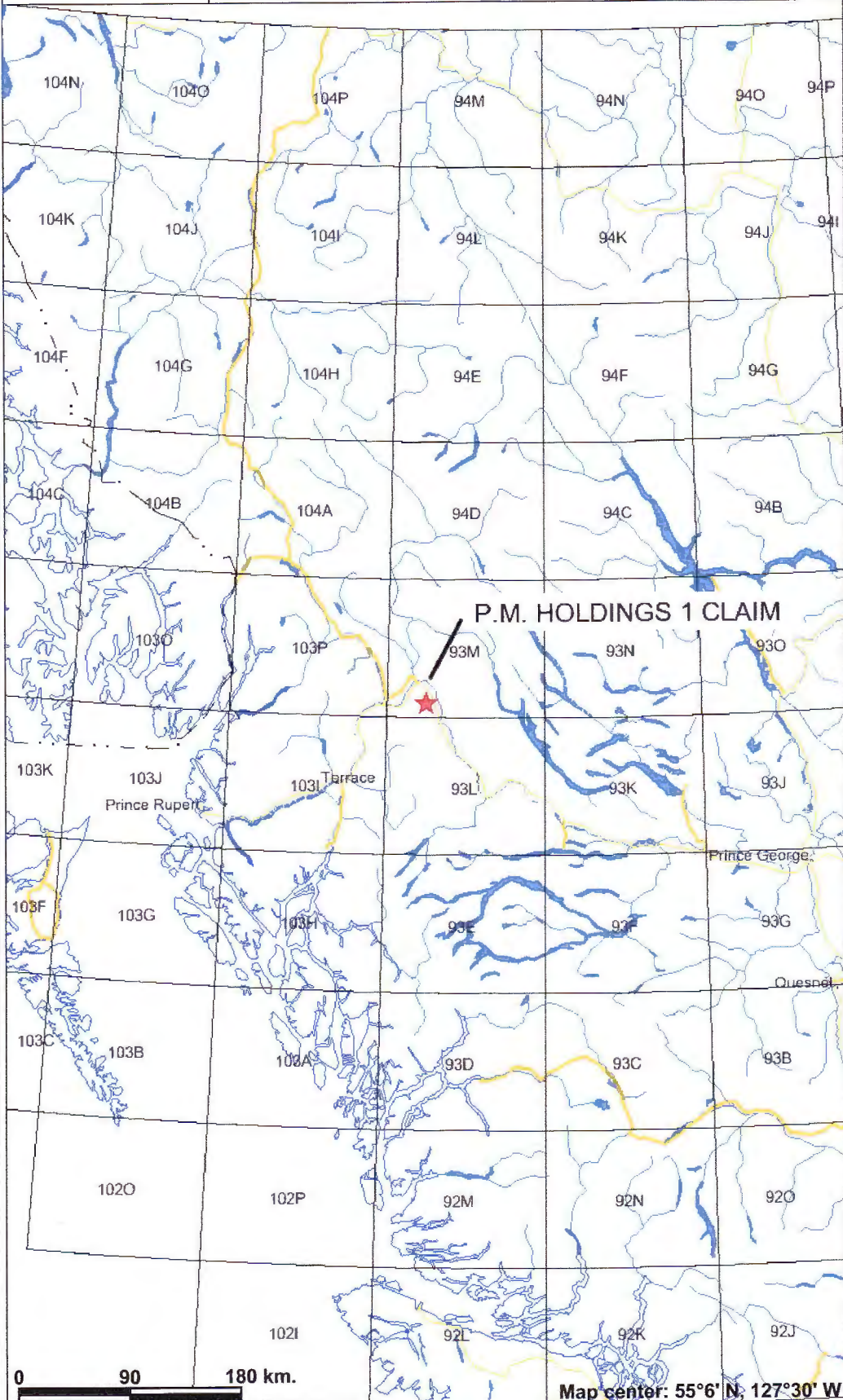
Location and Access

The P.M. Holdings 1 claim is located near the headwaters of Boulder Creek, 18 km northwest of Moricetown, B.C. Access to the claim is by quad trail from Highway 16, travelling 16 km westerly, following up Boulder Creek to a cirque near the headwaters.

Physiography, Climate and Vegetation

The Boulder Creek Valley is heavily forested with over-mature stands of hemlock and spruce, and at the claim location the terrain is steep with cliffs and talus material. Terrain becomes inaccessible without the aid of climbing equipment at higher elevations. Heavy snowfall is common in the area making access somewhat limited to about three months of the year.

LOCATION MAP



Legend

- Provincial Boundary (1:6M)
- Boundary (International)
- Boundary (Interprovincial)
- NTS Grid
- Transportation - Lines (1:6M)
 - Road - Trunk
 - Road - Main
 - Rail Line
- Water - Lines (1:6M)
 - River/Stream - Definite
 - Lake - Definite
 - Island - Definite
 - Coastline - Definite
- Water - Polygons (1:6M)
 - River/Stream - Definite
 - Lake - Definite
- Major Cities

0 90 180 km.

Map center: 55°6' N, 127°30' W



Scale: 1:5,000,000

This map is a user generated static output from an Internet mapping site and is for general reference only. Data layers that appear on this map may or may not be accurate, current, or otherwise reliable. THIS MAP IS NOT TO BE USED FOR NAVIGATION.

Notes:

FIGURE 1

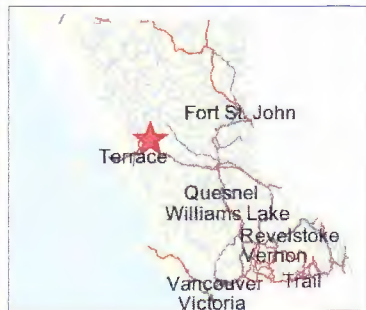
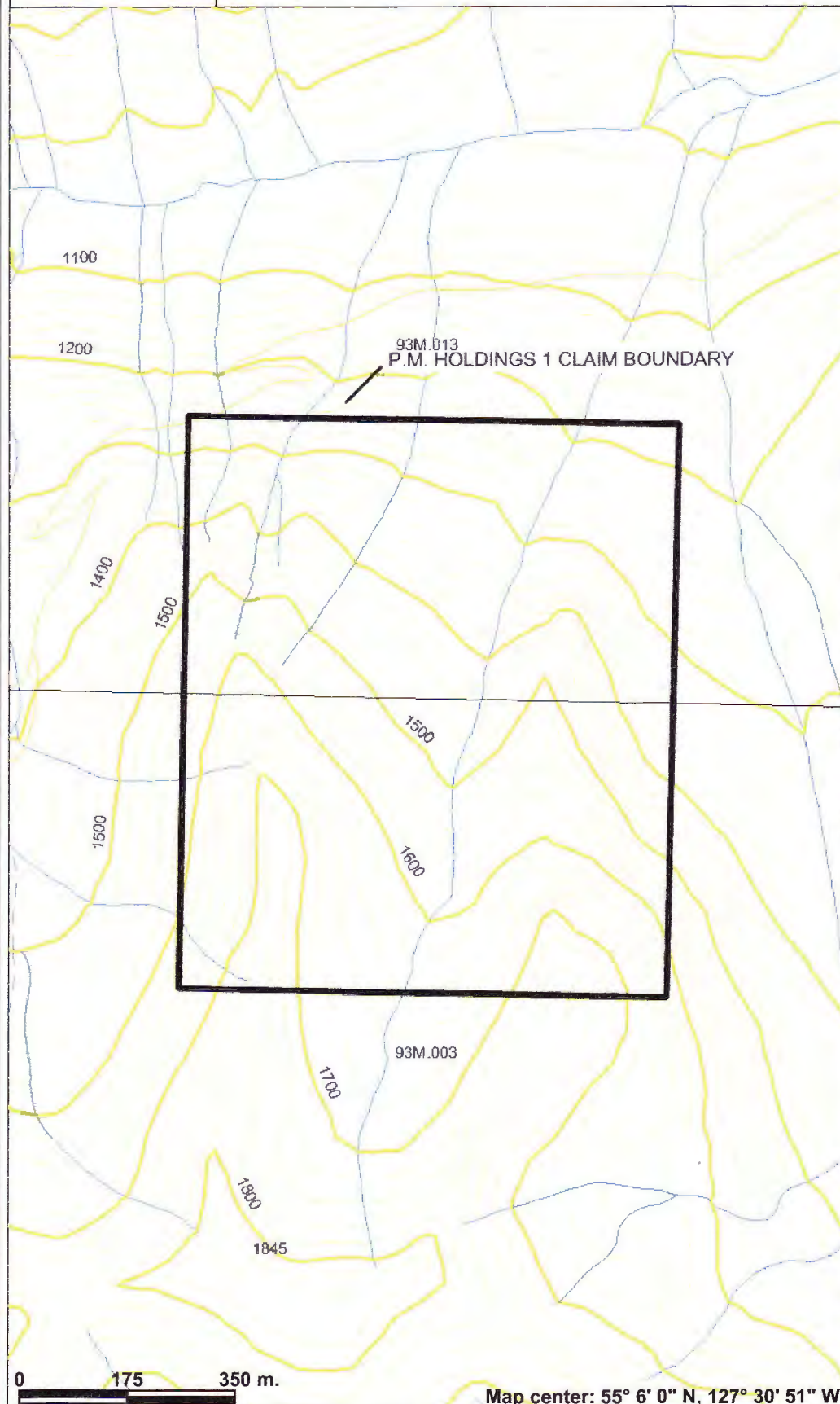
Claim and Ownership

The P.M. Holdings 1 claim is owned 50% by Randy Marko and 50% by Vernon Palmer and is in good standing. It covers an area of 74.04 hectares as indicated in Table 1 below.

Table 1

Tenure Number	Claim Name	Owner	Good to Date	Status	Area
539621	P.M. HOLDINGS 1	201917 (50%) 204267 (50%)	16 Oct 2014	Good	74.04 ha

CLAIM LOCATION MAP



Legend

- Indian Reserves
- National Parks
- Conservancy Areas
- Parks
- Federal Transfer Lands
- Mineral Tenure (current)
- Mineral Reserves (current)
- Placer Claim Designation
- Placer Lease Designation
- No Staking Reserve
- Conditional Reserve
- Release Required Reserve
- Surface Restriction
- Recreation Area
- Others
- First Nations Treaty Related Lands
- First Nations Treaty Lands
- Integrated Cadastral Fabric
- Survey Parcels
- BCGS Grid
- Contours (TRIM)**
- Contour - Index
- Contour - Index.Indefinite
- Contour - Index.Depression
- Contour - Index.Depression Indefinite
- Contour - Intermediate
- Contour - Intermediate.Indefinite
- Contour - Intermediate.Depression
- Contour - Intermediate.Depression Indefinite
- Area of Exclusion
- Area of Indefinite Contours
- Annotation (1:20K)
- Transportation - Points (TRIM)
- Helipad
- Transportation - Lines (TRIM)
- Airfield
- Airport
- Airstrip
- Airport Abandoned
- Ferry Route
- Road (Gravel Undivided) - 1 Lane
- Road (Gravel Undivided) - 2 Lanes
- Road (Gravel Undivided) - U/C - 1 Lane
- Road (Gravel Undivided) - U/C - 2 Lanes
- Road (Paved Divided) - Not Elevated - 1 Lane Each Way
- Road (Paved Divided) - Not Elevated -

0 175 350 m.

Map center: 55° 6' 0" N, 127° 30' 51" W

 Scale: 1:10,000

This map is a user generated static output from an Internet mapping site and is for general reference only. Data layers that appear on this map may or may not be accurate, current, or otherwise reliable. THIS MAP IS NOT TO BE USED FOR NAVIGATION.

Notes:
FIGURE 2

Exploration History

The P.M. Holdings 1 claim is located immediately west of a silver/gold prospect known as the Sultana claim. Limited exploration took place until 1921. According to the Utah Report on the property, the property did undergo a limited diamond drill program in 1968 by Sultana Silver Mines Ltd. The company returned in 1969 and drilled an additional three holes.

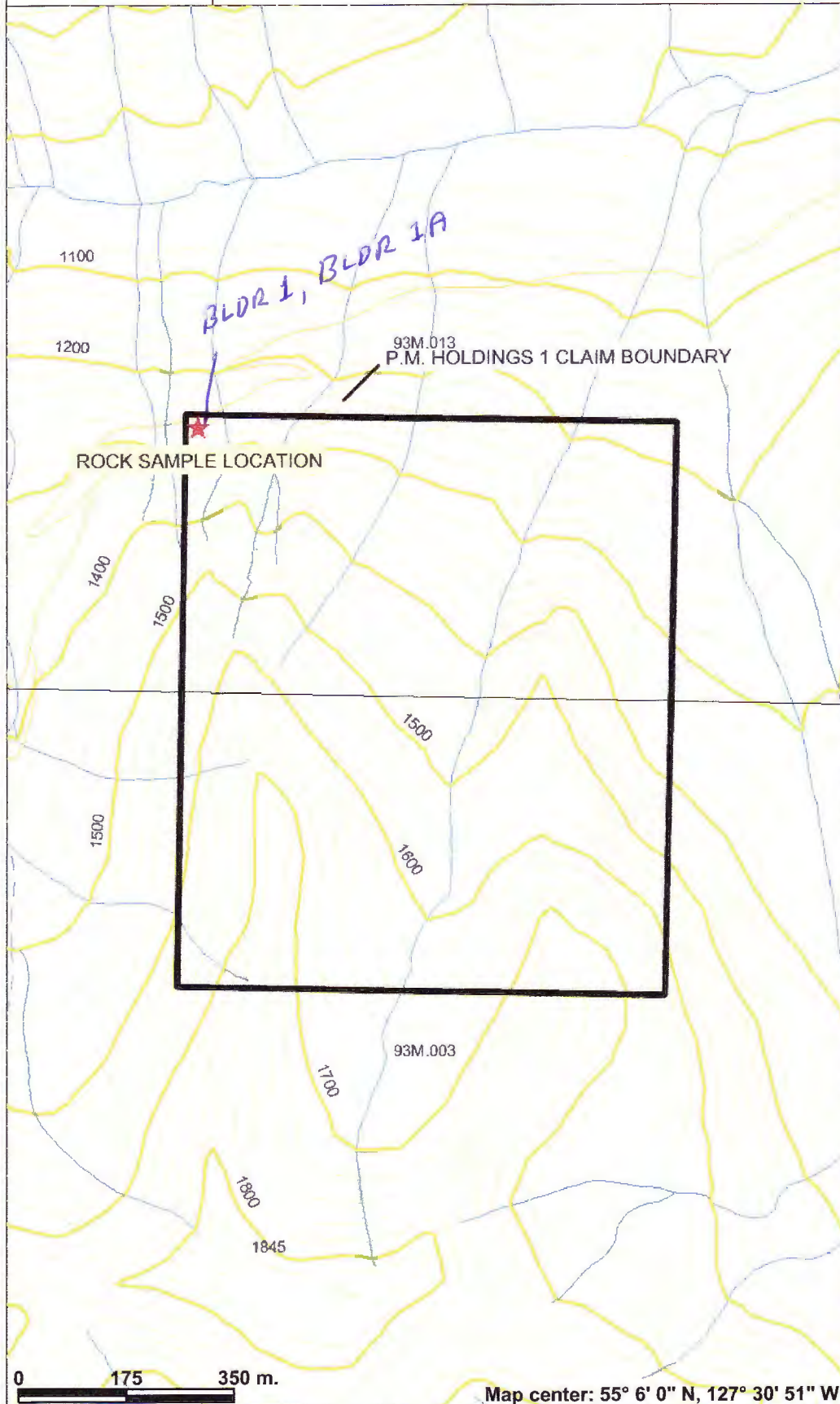
None of the previously known Sultana showings occur on the P.M. Holdings 1 tenure.

Regional Geological Setting, Property Geology and Mineralization

The area is underlain by porphyritic granodiorite of the Late Cretaceous Rocher Deboule stock and is part of the Bulkley intrusions. (GSC open file 2322).

A small amount of shale and siltstone occurs on P.M. Holdings 1 claim, but the claim is primarily covered by talus material consisting of porphyritic granodiorite. Pyrite and chalcopyrite is common in the granodiorite and is often visible as fine-grained and disseminated flecks throughout the host rock. Occasional larger blebs of pyrite (1 cm) were observed in float material in the talus slopes.

SAMPLE LOCATION



Legend

- Indian Reserves
- National Parks
- Conservancy Areas
- Parks
- Federal Transfer Lands
- Mineral Tenure (current)
- Mineral Reserves (current)
- Placer Claim Designation
- Placer Lease Designation
- No Staking Reserve
- Conditional Reserve
- Release Required Reserve
- Surface Restriction
- Recreation Area
- Others
- First Nations Treaty Related Lands
- First Nations Treaty Lands
- Integrated Cadastral Fabric
- Survey Parcels
- BCGS Grid
- Contours (TRIM)
- Contour - Index
- Contour - Index.Indefinite
- Contour - Index.Depression
- Contour - Index.Depression Indefinite
- Contour - Intermediate
- Contour - Intermediate.Indefinite
- Contour - Intermediate.Depression
- Contour - Intermediate.Depression Indefinite
- Indefinite
- Area of Exclusion
- Area of Indefinite Contours
- Annotation (1:20K)
- Transportation - Points (TRIM)
- Helipad
- Transportation - Lines (TRIM)
- Airfield
- Airport
- Airstrip
- Airport Abandoned
- Ferry Route
- Road (Gravel Undivided) - 1 Lane
- Road (Gravel Undivided) - 2 Lanes
- Road (Gravel Undivided) - U/C - 1 Lane
- Road (Gravel Undivided) - U/C - 2 Lanes
- Road (Paved Divided) - Not Elevated - 1 Lane Each Way
- Road (Paved Divided) - Not Elevated -

Scale: 1:10,000

This map is a user generated static output from an Internet mapping site and is for general reference only. Data layers that appear on this map may or may not be accurate, current, or otherwise reliable. THIS MAP IS NOT TO BE USED FOR NAVIGATION.

Notes:
FIGURE 3

Work Completed 2012

The P.M. Holdings 1 claim was examined by the author, along with Len Maillot on the days of August 14 and August 18, 2012. The purpose of these visits was to make geological observations and collect rock samples to evaluate any potentially economic mineralization on the property. Attempts were made to traverse up through talus slopes and explore cliff bases. The terrain was extremely treacherous and after several attempts to climb to the southern portions of the claim the decision was made to prospect the more northerly areas of the claim along the access trail. The talus material was exclusively granodiorite, often mineralized with finely grained pyrite. Oxidization and weathering stains were common throughout the talus material. A single grab sample (BLDR 1) was acquired and was assayed for major and trace elements, and is indicated in Figure 3. A second sample was taken one metre west (BLDR 1A) and was assayed for rare earth elements, also indicated in Figure 3.

Rock Geochemistry

Two rock samples were collected on the property in order to determine any economic potential. Samples were collected in plastic sample bags, and sample locations were recorded by GPS. Sample locations are marked with flagging tape. The samples were sealed in bags with security tags and taken to Acme assay lab in Smithers, British Columbia.

At the laboratory, the samples were dried, crushed and pulverized using standard rock preparation procedures. Quality control at the laboratory is maintained by internal standards and re-assaying duplicate samples from each analytical batch.

Rock sample locations and descriptions are presented in Table 2. Full analytical results are in Appendix I. Sample locations are plotted by sample number in Figure 3.

Table 2 – Results

Sample	GPS Location	Sample Description	Weight (kg)	Ag ppm	Cu ppm	Zr ppm
BLDR 1	55°6'13.9" N 127°31'13" W	granodiorite with finely disseminated pyrite.	.95	3.1	119	NA
BLDR 1A	1 m west of BLDR 1	granodiorite with finely disseminated pyrite.	.71	NA	NA	149.6

Conclusions

After spending two days prospecting and traversing the accessible areas of the P.M. Holdings 1 claim, it is the opinion of this author that the results of the assays for both silver and copper are encouraging, and do indicate an elevated and possible economic potential on the claim. The REE results, however, were sub-economic and do not warrant further pursuit. In the future access to the majority of the claim will have to be facilitated by using professional climbing equipment and/or helicopter use.



AcmeLabs

Acme Analytical Laboratories (Vancouver) Ltd.

1020 Cordova St. East Vancouver BC V6A 4A3 Canada

www.acmelab.com

Client: **Randy Marko**
4723 Morris Rd.
Telkwa BC V0J 2X3 CANADA

Submitted By: Randy Marko
Receiving Lab: Canada-Smithers
Received: September 21, 2012
Report Date: November 28, 2012
Page: 1 of 2

PRELIMINARY REPORT

SMI12000386

CLIENT JOB INFORMATION

Project: BLDR
Shipment ID: SH2
P.O. Number
Number of Samples: 2

SAMPLE DISPOSAL

RTRN-PLP Return
PICKUP-RJT Client to Pickup Rejects

SAMPLE PREPARATION AND ANALYTICAL PROCEDURES

Method Code	Number of Samples	Code Description	Test Wgt (g)	Report Status	Lab
R200-250	2	Crush, split and pulverize 250 g rock to 200 mesh			SMI
3A	1	Ignite samples, acid digest, Au by ICP-MS analysis	15	Completed	VAN
1DD	1	1:1:1 Aqua Regia digestion ICP-ES analysis	0.5	Completed	VAN
4A4B	1	Whole Rock Analysis Majors and Trace Elements	0.2	Completed	VAN

ADDITIONAL COMMENTS

Acme does not accept responsibility for samples left at the laboratory after 90 days without prior written instructions for sample storage or return.

Invoice To: **Randy Marko**
4723 Morris Rd.
Telkwa BC V0J 2X3
CANADA

CC:

This report supersedes all previous preliminary and final reports with this file number dated prior to the date on this certificate. Signature indicates final approval; preliminary reports are unsigned and should be used for reference only. All results are considered the confidential property of the client. Acme assumes the liabilities for actual cost of analysis only. Results apply to samples as submitted.

*** asterisk indicates that an analytical result could not be provided due to unusually high levels of interference from other elements.



AcmeLabs

Acme Analytical Laboratories (Vancouver) Ltd.

1020 Cordova St. East Vancouver BC V6A 4A3 Canada

Phone (604) 253-3158 Fax (604) 253-1716

www.acmelab.com

Client: Randy Marko
4723 Morris Rd.
Telkwa BC V0J 2X3 CANADA

Project: BLDR
Report Date: November 28, 2012

Page: 2 of 2

Part: 2 of 1

PRELIMINARY REPORT

SMI12000386

Method	1D	1D	1D	1D	1D	1D	1D	1D	1D	1D	1D	1D	1D	1D	1D	4A-4B	4A-4B	4A-4B	4A-4B	4A-4B
Analyte	V	Ca	P	La	Cr	Mg	Ba	Ti	B	Al	Na	K	W	S	SiO2	Al2O3	Fe2O3	MgO	CaO	
Unit	ppm	%	%	ppm	ppm	%	ppm	%	ppm	%	%	%	ppm	%	%	%	%	%	%	
MDL	1	0.01	0.001	1	1	0.01	1	0.01	20	0.01	0.01	0.01	2	0.05	0.01	0.01	0.04	0.01	0.01	
G1-SMI	Prep Blank	37	0.57	0.076	12	6	0.56	317	0.14	<20	1.05	0.10	0.54	<2	<0.05	67.07	15.80	3.45	1.12	3.65
BLDR 1	Rock	56	0.80	0.098	10	33	0.51	192	0.16	<20	1.04	0.13	0.29	<2	<0.05	N.A.	N.A.	N.A.	N.A.	N.A.
BLDR 1 A	Rock	N.A.	N.A.	N.A.	N.A.	N.A.	N.A.	N.A.	N.A.	N.A.	N.A.	N.A.	N.A.	N.A.	N.A.	55.70	15.13	6.71	5.69	7.58

-12-



AcmeLabs

Acme Analytical Laboratories (Vancouver) Ltd.

1020 Cordova St. East Vancouver BC V6A 4A3 Canada

Phone (604) 253-3158 Fax (604) 253-1716

www.acmelab.com

Client:

Randy Marko

4723 Morris Rd.

Telkwa BC V0J 2X3 CANADA

Project:

BLDR

Report Date:

November 28, 2012

Page:

2 of 2

Part:

3 of 1

PRELIMINARY REPORT

SMI12000386

Method	4A-4B	4A-4B	4A-4B	4A-4B	4A-4B	4A-4B	4A-4B	4A-4B	4A-4B	4A-4B	4A-4B	4A-4B	4A-4B	4A-4B	4A-4B	4A-4B	4A-4B	4A-4B	4A-4B	
Analyte	Na2O	K2O	TiO2	P2O5	MnO	Cr2O3	Ni	Sc	LOI	Sum	Ba	Be	Co	Cs	Ga	Hf	Nb	Rb	Sn	
Unit	%	%	%	%	%	%	ppm	ppm	%	%	ppm	ppm	ppm	ppm	ppm	ppm	ppm	ppm	ppm	
MDL	0.01	0.01	0.01	0.01	0.01	0.002	20	1	-5.1	0.01	1	1	0.2	0.1	0.5	0.1	0.1	0.1	1	
G1-SMI	Prep Blank	3.56	3.55	0.40	0.18	0.10	<0.002	<20	6	0.8	99.71	1117	4	3.7	3.9	18.0	4.0	23.3	127.3	1
BLDR 1	Rock	N.A.	N.A.	N.A.	N.A.	N.A.	N.A.	N.A.	N.A.	N.A.	N.A.	N.A.	N.A.	N.A.	N.A.	N.A.	N.A.	N.A.	N.A.	N.A.
BLDR 1 A	Rock	3.91	2.50	0.81	0.20	0.15	0.011	<20	20	1.3	99.70	952	<1	14.4	1.1	14.3	4.3	11.4	56.7	2

-13-



AcmeLabs

Acme Analytical Laboratories (Vancouver) Ltd.

1020 Cordova St. East Vancouver BC V6A 4A3 Canada

Phone (604) 253-3158 Fax (604) 253-1716

www.acmelab.com

Client: Randy Marko
4723 Morris Rd.
Telkwa BC V0J 2X3 CANADA

Project: BLDR
Report Date: November 28, 2012

Page: 2 of 2

Part: 4 of 1

PRELIMINARY REPORT

SMI12000386

Method	4A-4B	4A-4B	4A-4B	4A-4B	4A-4B	4A-4B	4A-4B	4A-4B	4A-4B	4A-4B	4A-4B	4A-4B	4A-4B	4A-4B	4A-4B	4A-4B	4A-4B	4A-4B	4A-4B	4A-4B
Analyte	Sr	Ta	Th	U	V	W	Zr	Y	La	Ce	Pr	Nd	Sm	Eu	Gd	Tb	Dy	Ho	Er	
Unit	ppm	ppm	ppm	ppm	ppm	ppm	ppm	ppm	ppm	ppm	ppm	ppm	ppm	ppm	ppm	ppm	ppm	ppm	ppm	
MDL	0.5	0.1	0.2	0.1	8	0.5	0.1	0.1	0.1	0.1	0.02	0.3	0.05	0.02	0.05	0.01	0.05	0.02	0.03	
G1-SMI	Prep Blank	672.1	1.2	8.4	2.9	48	<0.5	144.0	14.3	26.9	51.8	6.56	23.9	4.12	1.03	3.25	0.48	2.79	0.50	1.36
BLDR 1	Rock	N.A.	N.A.	N.A.	N.A.	N.A.	N.A.	N.A.	N.A.	N.A.	N.A.	N.A.	N.A.	N.A.	N.A.	N.A.	N.A.	N.A.	N.A.	N.A.
BLDR 1 A	Rock	393.8	0.8	7.2	3.9	126	2.3	149.6	25.2	15.9	31.2	4.44	17.6	4.38	1.34	4.30	0.73	4.20	0.81	2.39

-14-



AcmeLabs

Acme Analytical Laboratories (Vancouver) Ltd.

1020 Cordova St. East Vancouver BC V6A 4A3 Canada
 Phone (604) 253-3158 Fax (604) 253-1716

www.acmelab.com

Client: Randy Marko
 4723 Morris Rd.
 Telkwa BC V0J 2X3 CANADA

Project: BLDR
Report Date: November 28, 2012

Page: 1 of 2

Part: 2 of 1

QUALITY CONTROL REPORT

SMI12000386

Method	1D	1D	1D	1D	1D	1D	1D	1D	1D	1D	1D	1D	1D	4A-4B	4A-4B	4A-4B	4A-4B	4A-4B	4A-4B	4A-4B
Analyte	Ca	P	La	Cr	Mg	Ba	Ti	B	Al	Na	K	W	S	SiO2	Al2O3	Fe2O3	MgO	CaO	Na2O	K2O
Unit	%	%	ppm	ppm	%	ppm	%	ppm	%	%	%	ppm	%	%	%	%	%	%	%	%
MDL	0.01	0.001	1	1	0.01	1	0.01	20	0.01	0.01	0.01	2	0.05	0.01	0.01	0.04	0.01	0.01	0.01	0.01
Pulp Duplicates																				
BLDR 1	Rock	0.80	0.098	10	33	0.51	192	0.16	<20	1.04	0.13	0.29	<2	<0.05	N.A.	N.A.	N.A.	N.A.	N.A.	N.A.
REP BLDR 1	QC																			
Reference Materials																				
STD CDN-GS-P2A	Standard																			
STD DS9	Standard																			
STD DS9	Standard	0.74	0.081	12	118	0.63	336	0.11	<20	0.97	0.09	0.41	3	0.16						
STD GS311-1	Standard																			
STD GS910-4	Standard																			
STD OREAS45CA	Standard																			
STD OREAS45EA	Standard																			
STD OREAS45CA	Standard	0.44	0.037	16	790	0.13	163	0.14	<20	3.80	0.01	0.07	<2	<0.05						
STD OREAS45EA	Standard	0.03	0.029	7	945	0.09	148	0.10	<20	3.35	0.02	0.05	<2	<0.05						
STD SO-18	Standard													58.06	14.12	7.55	3.36	6.36	3.73	2.16
STD SO-18	Standard													57.86	14.21	7.67	3.38	6.34	3.73	2.15
STD GS311-1 Expected																				
STD GS910-4 Expected																				
STD SO-18 Expected														58.47	14.23	7.67	3.35	6.42	3.71	2.17
STD DS9 Expected		0.7201	0.0819	13.3	121	0.6165	330	0.1108		0.9577	0.0853	0.395	2.89	0.1615						
STD OREAS45CA		0.4265	0.0385	15.9	709	0.1358	164	0.128		3.592	0.0075	0.0717		0.021						
STD OREAS45EA		0.032	0.029	8.19	849	0.095	148	0.106		3.32	0.027	0.053		0.044						
STD CDN-GS-P2A																				
BLK	Blank																			
BLK	Blank																			
BLK	Blank													<0.01	<0.01	<0.04	<0.01	<0.01	<0.01	<0.01
BLK	Blank	<0.01	<0.001	<1	<1	<0.01	<1	<0.01	<20	<0.01	<0.01	<0.01	<2	<0.05						
BLK	Blank																			
Prep Wash																				

-15-



AcmeLabs

Acme Analytical Laboratories (Vancouver) Ltd.

1020 Cordova St. East Vancouver BC V6A 4A3 Canada
 Phone (604) 253-3158 Fax (604) 253-1716

www.acmelab.com

Client: Randy Marko
 4723 Morris Rd.
 Telkwa BC V0J 2X3 CANADA

Project: BLDR
Report Date: November 28, 2012

Page: 1 of 2

Part: 3 of 1

QUALITY CONTROL REPORT

SMI12000386

Method		4A-4B	4A-4B	4A-4B	4A-4B	4A-4B	4A-4B	4A-4B	4A-4B	4A-4B	4A-4B	4A-4B	4A-4B	4A-4B	4A-4B	4A-4B	4A-4B	4A-4B	4A-4B	4A-4B	
Analyte		TiO2	P2O5	MnO	Cr2O3	Ni	Sc	LOI	Sum	Ba	Be	Co	Cs	Ga	Hf	Nb	Rb	Sn	Sr	Ta	Th
Unit		%	%	%	%	ppm	ppm	%	%	ppm	ppm	ppm	ppm	ppm	ppm	ppm	ppm	ppm	ppm	ppm	ppm
MDL		0.01	0.01	0.01	0.002	20	1	-5.1	0.01	1	1	0.2	0.1	0.5	0.1	0.1	0.1	1	0.5	0.1	0.2
Pulp Duplicates																					
BLDR 1	Rock	N.A.	N.A.	N.A.	N.A.	N.A.	N.A.	N.A.	N.A.	N.A.	N.A.	N.A.	N.A.	N.A.	N.A.	N.A.	N.A.	N.A.	N.A.	N.A.	N.A.
REP BLDR 1	QC																				
Reference Materials																					
STD CDN-GS-P2A	Standard																				
STD DS9	Standard																				
STD GS311-1	Standard																				
STD GS910-4	Standard																				
STD OREAS45CA	Standard																				
STD OREAS45EA	Standard																				
STD SO-18	Standard	0.69	0.83	0.41	0.560	46	24	1.9	99.75	522	<1	23.8	6.4	17.0	9.2	19.8	29.2	14	383.5	6.8	9.8
STD SO-18	Standard	0.69	0.85	0.41	0.565	43	24	1.9	99.74	515	<1	24.2	6.3	16.6	9.4	19.9	28.3	13	377.8	6.7	9.6
STD GS311-1	Expected																				
STD GS910-4	Expected																				
STD SO-18	Expected	0.69	0.83	0.39	0.55	44	25			514		26.2	7.1	17.6	9.8	21.3	28.7	15	407.4	7.4	9.9
STD DS9	Expected																				
STD OREAS45CA																					
STD OREAS45EA																					
STD CDN-GS-P2A																					
BLK	Blank																				
BLK	Blank																				
BLK	Blank	<0.01	<0.01	<0.01	<0.002	<20	<1	0.0	<0.01	<1	<1	<0.2	<0.1	<0.5	<0.1	<0.1	<0.1	<1	<0.5	<0.1	<0.2
BLK	Blank																				
BLK	Blank																				
Prep Wash																					

-16-



AcmeLabs

Acme Analytical Laboratories (Vancouver) Ltd.

1020 Cordova St. East Vancouver BC V6A 4A3 Canada

Phone (604) 253-3158 Fax (604) 253-1716

www.acmelab.com

Client: **Randy Marko**
4723 Morris Rd.
Telkwa BC V0J 2X3 CANADA

Project: BLDR
Report Date: November 28, 2012

Page: 1 of 2

Part: 4 of 1

QUALITY CONTROL REPORT

SMI12000386

Method	4A-4B	4A-4B	4A-4B	4A-4B	4A-4B	4A-4B	4A-4B	4A-4B	4A-4B	4A-4B	4A-4B	4A-4B	4A-4B	4A-4B	4A-4B	4A-4B	4A-4B	4A-4B	4A-4B	2A	Leco
Analyte	U	V	W	Zr	Y	La	Ce	Pr	Nd	Sm	Eu	Gd	Tb	Dy	Ho	Er	Tm	Yb	Lu	TOT/C	
Unit	ppm	ppm	ppm	ppm	ppm	ppm	ppm	ppm	ppm	ppm	ppm	ppm	ppm	ppm	ppm	ppm	ppm	ppm	ppm	ppm	%
MDL	0.1	8	0.5	0.1	0.1	0.1	0.1	0.02	0.3	0.05	0.02	0.05	0.01	0.05	0.02	0.03	0.01	0.05	0.01	0.02	
Pulp Duplicates																					
BLDR 1	Rock	N.A.	N.A.	N.A.	N.A.	N.A.	N.A.	N.A.	N.A.	N.A.	N.A.	N.A.	N.A.	N.A.	N.A.	N.A.	N.A.	N.A.	N.A.	N.A.	N.A.
REP BLDR 1	QC																				
Reference Materials																					
STD CDN-GS-P2A	Standard																				
STD DS9	Standard																				
STD GS311-1	Standard																				0.97
STD GS910-4	Standard																				2.66
STD OREAS45CA	Standard																				
STD OREAS45EA	Standard																				
STD SO-18	Standard	16.5	189	13.9	282.1	30.9	11.1	24.9	3.34	13.1	2.88	0.87	2.92	0.52	2.89	0.59	1.64	0.26	1.59	0.26	
STD SO-18	Standard	16.5	185	13.6	278.4	30.3	11.4	24.3	3.34	13.6	2.88	0.84	2.87	0.51	2.79	0.54	1.71	0.25	1.58	0.25	
STD GS311-1 Expected																					1.02
STD GS910-4 Expected																					2.65
STD SO-18 Expected		16.4	200	14.8	280	31	12.3	27.1	3.45	14	3	0.89	2.93	0.53	3	0.62	1.84	0.27	1.79	0.27	
STD DS9 Expected																					
STD OREAS45CA																					
STD OREAS45EA																					
STD CDN-GS-P2A																					
BLK	Blank																				
BLK	Blank																				<0.02
BLK	Blank	<0.1	<8	<0.5	0.2	<0.1	<0.1	<0.1	<0.02	<0.3	<0.05	<0.02	<0.05	<0.01	<0.05	<0.02	<0.03	<0.01	<0.05	<0.01	
BLK	Blank																				
BLK	Blank																				
Prep Wash																					

-17-



AcmeLabs

Acme Analytical Laboratories (Vancouver) Ltd.

1020 Cordova St. East Vancouver BC V6A 4A3 Canada
 Phone (604) 253-3158 Fax (604) 253-1716

www.acmelab.com

Client: Randy Marko
 4723 Morris Rd.
 Telkwa BC V0J 2X3 CANADA

Project: BLDR
Report Date: November 28, 2012

Page: 1 of 2

Part: 5 of 1

QUALITY CONTROL REPORT

SMI12000386

Method	2A Leco	1DX	1DX	1DX	1DX	1DX	1DX	1DX	1DX	1DX	1DX	1DX	1DX	1DX	1DX	
Analyte	TOT/S	Mo	Cu	Pb	Zn	Ag	Ni	As	Au	Cd	Sb	Bi	Hg	Tl	Se	
Unit	%	ppm	ppm	ppm	ppm	ppm	ppm	ppm	ppb	ppm	ppm	ppm	ppm	ppm	ppm	
MDL	0.02	0.1	0.1	0.1	1	0.1	0.1	0.5	0.5	0.1	0.1	0.1	0.01	0.1	0.5	
Pulp Duplicates																
BLDR 1	Rock	N.A.	N.A.	N.A.	N.A.	N.A.	N.A.	N.A.	N.A.	N.A.	N.A.	N.A.	N.A.	N.A.	N.A.	N.A.
REP BLDR 1	QC															
Reference Materials																
STD CDN-GS-P2A	Standard															
STD DS9	Standard		13.6	113.5	117.4	307	1.8	41.4	24.6	97.5	2.5	5.2	7.4	0.17	5.2	5.0
STD DS9	Standard															
STD GS311-1	Standard	2.34														
STD GS910-4	Standard	8.16														
STD OREAS45CA	Standard		0.9	517.5	23.8	55	0.3	251.8	3.6	47.1	0.1	0.1	0.2	0.03	<0.1	<0.5
STD OREAS45EA	Standard		1.3	704.6	16.0	28	0.3	383.2	9.1	41.3	<0.1	0.2	0.3	<0.01	<0.1	0.8
STD OREAS45CA	Standard															
STD OREAS45EA	Standard															
STD SO-18	Standard															
STD SO-18	Standard															
STD GS311-1 Expected		2.35														
STD GS910-4 Expected		8.27														
STD SO-18 Expected																
STD DS9 Expected			12.84	108	126	317	1.83	40.3	25.5	118	2.4	4.94	6.32	0.2	5.3	5.2
STD OREAS45CA			1	494	20	60	0.275	240	3.8	43	0.1	0.13	0.19	0.03	0.07	0.5
STD OREAS45EA			1.78	709	14.3	30.6	0.311	357	11.4	53	0.03	0.64	0.26	0.34	0.072	2.09
STD CDN-GS-P2A																
BLK	Blank		<0.1	<0.1	<0.1	<1	<0.1	<0.1	<0.5	<0.5	<0.1	<0.1	<0.1	<0.01	<0.1	<0.5
BLK	Blank	<0.02														
BLK	Blank															
BLK	Blank															
BLK	Blank															
Prep Wash																

-18-



AcmeLabs

Acme Analytical Laboratories (Vancouver) Ltd.

1020 Cordova St. East Vancouver BC V6A 4A3 Canada
Phone (604) 253-3158 Fax (604) 253-1716

www.acmelab.com

Client: Randy Marko
4723 Morris Rd.
Telkwa BC V0J 2X3 CANADA

Project: BLDR
Report Date: November 28, 2012

Page: 2 of 2

Part: 5 of 1

QUALITY CONTROL REPORT

SMI12000386

		2A Leco	1DX	1DX	1DX	1DX	1DX	1DX	1DX	1DX	1DX	1DX	1DX	1DX	1DX	
		TOT/S	Mo	Cu	Pb	Zn	Ag	Ni	As	Au	Cd	Sb	Bi	Hg	Tl	Se
		%	ppm	ppm	ppm	ppm	ppm	ppm	ppm	ppb	ppm	ppm	ppm	ppm	ppm	ppm
		0.02	0.1	0.1	0.1	1	0.1	0.1	0.5	0.5	0.1	0.1	0.1	0.01	0.1	0.5
G1-SMI	Prep Blank	<0.02	0.8	15.9	13.9	46	3.4	2.4	1.6	<0.5	0.2	5.5	<0.1	<0.01	0.3	<0.5



AcmeLabs

Acme Analytical Laboratories (Vancouver) Ltd.

1020 Cordova St. East Vancouver BC V6A 4A3 Canada

Phone (604) 253-3158 Fax (604) 253-1716

www.acmelab.com

Client: Randy Marko
4723 Morris Rd.
Telkwa BC V0J 2X3 CANADA

Project: BLDR
Report Date: November 28, 2012

Page: 2 of 2

Part: 4 of 1

QUALITY CONTROL REPORT

SMI12000386

	4A-4B	4A-4B	4A-4B	4A-4B	4A-4B	4A-4B	4A-4B	4A-4B	4A-4B	4A-4B	4A-4B	4A-4B	4A-4B	4A-4B	4A-4B	4A-4B	4A-4B	4A-4B	4A-4B	4A-4B	4A-4B	2A	Leco	
	U	V	W	Zr	Y	La	Ce	Pr	Nd	Sm	Eu	Gd	Tb	Dy	Ho	Er	Tm	Yb	Lu	TOT/C				
	ppm	ppm	ppm	ppm	ppm	ppm	ppm	ppm	ppm	ppm	ppm	ppm	ppm	ppm	ppm	ppm	ppm	ppm	ppm	ppm	ppm	ppm	ppm	%
	0.1	8	0.5	0.1	0.1	0.1	0.1	0.02	0.3	0.05	0.02	0.05	0.01	0.05	0.02	0.03	0.01	0.05	0.01	0.05	0.01	0.01	0.02	
G1-SMI	Prep Blank	2.9	48	<0.5	144.0	14.3	26.9	51.8	6.56	23.9	4.12	1.03	3.25	0.48	2.79	0.50	1.36	0.22	1.61	0.25	<0.02			

-20-



AcmeLabs

Acme Analytical Laboratories (Vancouver) Ltd.

1020 Cordova St. East Vancouver BC V6A 4A3 Canada

Phone (604) 253-3158 Fax (604) 253-1716

www.acmelab.com

Client: Randy Marko
4723 Morris Rd.
Telkwa BC V0J 2X3 CANADA

Project: BLDR
Report Date: November 28, 2012

Page: 2 of 2

Part: 3 of 1

QUALITY CONTROL REPORT

SMI12000386

	4A-4B	4A-4B	4A-4B	4A-4B	4A-4B	4A-4B	4A-4B	4A-4B	4A-4B	4A-4B	4A-4B	4A-4B	4A-4B	4A-4B	4A-4B	4A-4B	4A-4B	4A-4B	4A-4B	4A-4B
	TiO2	P2O5	MnO	Cr2O3	Ni	Sc	LOI	Sum	Ba	Be	Co	Cs	Ga	Hf	Nb	Rb	Sn	Sr	Ta	Th
	%	%	%	%	ppm	ppm	%	%	ppm	ppm	ppm	ppm	ppm	ppm	ppm	ppm	ppm	ppm	ppm	ppm
	0.01	0.01	0.01	0.002	20	1	-5.1	0.01	1	1	0.2	0.1	0.5	0.1	0.1	0.1	1	0.5	0.1	0.2
G1-SMI	0.40	0.18	0.10	<0.002	<20	6	0.8	99.71	1117	4	3.7	3.9	18.0	4.0	23.3	127.3	1	672.1	1.2	8.4
Prep Blank																				



AcmeLabs

Acme Analytical Laboratories (Vancouver) Ltd.

1020 Cordova St. East Vancouver BC V6A 4A3 Canada

Phone (604) 253-3158 Fax (604) 253-1716

www.acmelab.com

Client: Randy Marko
4723 Morris Rd.
Telkwa BC V0J 2X3 CANADA

Project: BLDR
Report Date: November 28, 2012

Page: 2 of 2

Part: 1 of 1

QUALITY CONTROL REPORT

SMI12000386

WGHT	3A	1D	1D	1D	1D	1D	1D	1D	1D	1D	1D	1D	1D	1D	1D	1D	1D	1D	1D	1D	
Wgt	Au	Mo	Cu	Pb	Zn	Ag	Ni	Co	Mn	Fe	As	U	Au	Th	Sr	Cd	Sb	Bi	V		
kg	ppb	ppm	ppm	ppm	ppm	ppm	ppm	ppm	ppm	%	ppm	ppm	ppm	ppm	ppm	ppm	ppm	ppm	ppm		
0.01	0.5	1	1	3	1	0.3	1	1	2	0.01	2	8	2	2	1	0.5	3	3	1		
G1-SMI	Prep Blank	<0.01	<0.5	<1	12	11	49	3.1	2	4	607	2.01	3	<8	<2	5	68	<0.5	5	<3	37



AcmeLabs

Acme Analytical Laboratories (Vancouver) Ltd.

1020 Cordova St. East Vancouver BC V6A 4A3 Canada
Phone (604) 253-3158 Fax (604) 253-1716

www.acmelab.com

Client: Randy Marko
4723 Morris Rd.
Telkwa BC V0J 2X3 CANADA

Project: BLDR
Report Date: November 28, 2012

Page: 2 of 2

Part: 2 of 1

QUALITY CONTROL REPORT

SMI12000386

		1D	1D	1D	1D	1D	1D	1D	1D	1D	1D	1D	1D	1D	4A-4B	4A-4B	4A-4B	4A-4B	4A-4B	4A-4B	4A-4B
		Ca	P	La	Cr	Mg	Ba	Ti	B	Al	Na	K	W	S	SiO2	Al2O3	Fe2O3	MgO	CaO	Na2O	K2O
		%	%	ppm	ppm	%	ppm	%	ppm	%	%	%	ppm	%	%	%	%	%	%	%	%
		0.01	0.001	1	1	0.01	1	0.01	20	0.01	0.01	0.01	2	0.05	0.01	0.01	0.04	0.01	0.01	0.01	0.01
G1-SMI	Prep Blank	0.57	0.076	12	6	0.56	317	0.14	<20	1.05	0.10	0.54	<2	<0.05	67.07	15.80	3.45	1.12	3.65	3.56	3.55

Qualifications

1. I, Randy Marko, was born in the Province of British Columbia on June 5, 1963 and currently reside near Smithers, B.C. I am a prospector that is actively involved in searching for mineral showings that have potential economic value.
2. I worked in the field of mining exploration for the summer seasons of 1979 and 1980 for Bethlehem Copper Corporation. I was trained by geologist staff in the areas of rock and mineral identification, proper sampling techniques, compassing and mapping of traverses, and sample locations.
3. I was employed by Cominco for the summer season of 1981 and was further trained with drafting department in Vancouver, B.C. My duties included mapping assay results in composite maps for review by senior staff.
4. I attest that all information contained in this prospecting report is, to the best of my knowledge, true and care was taken to ensure the accuracy of the information presented herein.



Randy John Marko

FMC #201917

Bibliography

Anderson, R.B. Utah Report, Geology, Geochemistry & Geophysics on the Sultana Group Jan 26, 1971.

Flower, K.A. B.C. Minfile 093M 061 Sultana, BCGS. July 17, 2009.

Detailed Cost Statement (P.M. Holdings 1 Claim)

Item	Details	Cost
1. Labour Costs	GPS Traversing & Sampling Work 4 man days @ \$275/day	\$1,100.00
2. Lab Costs	2 Rock Sample Assays	<u>\$ 100.00</u>
	Total Cost	\$1,200.00