

## Kannika Gold Property

---

ASSESSMENT REPORT ON THE GEOCHEMICAL, GEOPHYSICAL, AND PROSPECTING  
THE MONASHEE MINERAL CLAIMS

### Tenures

688503, 695883, 695903, 688568, 705356, 700804, 705186, 705354, 700803, 759849, 786482,  
786603, 786864, 805603, 832088, 834066, 887049, 893530, 805622, 936182, 1011326

Vernon Mining Division

Property Location

Southern British Columbia

BCGS 82L.008

Longitude and Latitude

50°05'23.56" N 118°26'59.21 W

By David A. Wallach

For

DW Exploration Ltd

July 18, 2012

## Table of Content

1.0	Introduction.....	3
2.0	Summery.....	3
3.0	List of Mineral Tenures and Status.....	4
4.0	Access and Location.....	5
5.0	Regional Geology.....	5
6.0	Physiography, Vegetation and Climate.....	5
7.0	Tompson Assemblage.....	5
8.0	Intrusive Rocks.....	6
9.0	Mineralization.....	6
10.0	Location Map.....	7
11.0	Claim Map.....	8
12.0	Rock Sample locations Map.....	9
13.0	Sample Analysis Map.....	10
14.0	Certificates of Analysis.....	11
15.0	Conclusion.....	22
16.0	Statement of Costs.....	22
17.0	References.....	23
18.0	Qualifications.....	24

## **1:0 INTRODUCTION**

The Kannika Gold property located in the Vernon Mining Division in south central British Columbia (figure 1). The Kannika Gold claims are owned and operated by David A. Wallach. The following report outlines the results of the geochemical sampling Road access, and prospecting that was carried out between May 9 and July 9, 2012. Event numbers; 5305988, 5393767, 5405459.

Previous work on the Monashee property by Royal Monashee Gold Corp., Brian Resources Ltd., Commonwealth Gold Corporation and Cameco Corporation found several drainages to be highly anomalous in gold values. Regional Geochemical Surveys by the Federal/Provincial Program (1985 to 1990) identified this area to be anomalous in gold, silver, arsenic, antimony, and bismuth. Rock samples were taken from and around the source to locate any possible trenching locations.

## **2:0 SUMMARY**

The Kannika Gold property located in the Vernon Mining Division of south Central British Columbia. Good access to the property is found 80 km east of Vernon along Provincial Highway 6. 6,757 hectares consisting of 22 claims make up the total inventory of the Kannika Gold Property, which are owned by David A. Wallach (FMC 146010).

The area surrounding Monashee Mountains was one of the earliest mining districts in Western Canada. The Monashee, St. Paul and Morgan workings were all small polymetallic deposits found on Monashee Mountain. In 1983 Brian Resources discovered two highly anomalous areas in gold called the Gossan and Southeast grids. In 1992 Cameco Corporation did extensive silt and moss mat sampling, which showed the Gossan and Southeast drainages to be highly anomalous as well. Cameco Corporation abandoned their project in 1995 due to a drop in gold prices and difficulties with working in British Columbia. Then in 2006, Royal Monashee Gold Corp conducted an extensive trenching program to the north east of the property boundaries, the gold-bearing veins are infrequent, narrow, discontinuous and generally flat lying, creating a low potential for economic vein mining.

The objective of the 2012 exploration program was to locate a source for a potential bulk sample program. A total of 34 rock samples were taken between May 9 and Aug 9 2012. The May 2012 exploration program was hindered by low lying snow, due to the situation only random sampling below the 900 meter mark was obtained. The samples taken at this time were of little value. Samples 269402 through 269419 had been taken with very disappointing returns. In July and August of 2012 several newly exposed areas due to new access roads were encountered along with a quartz vein from the Paladora mine had values of up to 41.8 ppm gold, 173993 ppb silver. At the south west end of the claims some small quartz veins with sulphides were found along the logging road. Due to some remaining snow cover at the tops of the mountains though July the program had to be revisited in August and was not completed as funding ran out to return at the later date. The event numbers are; 5305988, 5393767, and 5405459. Further work in the area is warranted. A follow-up exploration program will commence in the summer of 2013.

### **3:0 TENURES**

The Kannika Gold Claims consist of 21 tenures; 688503, 695883, 695903, 688568, 705356, 700804, 705186, 705354, 700803, 759849, 786482, 786603, 786864, 805603, 832088, 834066, 887049, 893530, 805622, 936182, 940861, 1011326.

<b>Tenure Number</b>	<b>Claim Name</b>	<b>Owner</b>	<b>Tenure Type</b>	<b>Tenure Sub Type</b>	<b>Map Number</b>	<b>Issue Date</b>	<b>Good To Date</b>	<b>Status</b>	<b>Area (ha)</b>
688503	KANNIA 1	146010 (100%)	Mineral	Claim	082L	2009/dec/23	2012/dec/01	GOOD	207.3
688568	KANNIKA 2	146010 (100%)	Mineral	Claim	082L	2009/dec/23	2012/dec/01	GOOD	518.3913
695883	KANNIKA 3	146010 (100%)	Mineral	Claim	082L	2010/jan/07	2012/dec/01	GOOD	269.6006
695903	KANNIKA 4	146010 (100%)	Mineral	Claim	082L	2010/jan/07	2012/dec/01	GOOD	373.3312
700803	KANNIKA 5	146010 (100%)	Mineral	Claim	082L	2010/jan/16	2012/dec/01	GOOD	518.2345
700804	KANNIKA 6	146010 (100%)	Mineral	Claim	082L	2010/jan/16	2012/dec/01	GOOD	435.4925
705186	KANNIKA 7	146010 (100%)	Mineral	Claim	082L	2010/feb/02	2012/dec/01	GOOD	124.4508
705354	KANNIKA 9	146010 (100%)	Mineral	Claim	082L	2010/feb/02	2012/dec/01	GOOD	165.9321
705356	KANNIKA 10	146010 (100%)	Mineral	Claim	082L	2010/feb/02	2012/dec/01	GOOD	248.7316
759849		146010 (100%)	Mineral	Claim	082L	2010/apr/28	2012/dec/01	GOOD	145.1648
786482	KANNIKA 11	146010 (100%)	Mineral	Claim	082L	2010/jun/04	2012/dec/01	GOOD	124.2534
786603	KANNIKA 12	146010 (100%)	Mineral	Claim	082L	2010/jun/04	2012/dec/01	GOOD	289.9658
786864	KANNIKA 13	146010 (100%)	Mineral	Claim	082L	2010/jun/05	2012/dec/01	GOOD	497.2969
805603	KANNIKA 14	146010 (100%)	Mineral	Claim	082L	2010/jul/01	2012/dec/01	GOOD	476.9236
805622	KANNIKA 12	146010 (100%)	Mineral	Claim	082L	2010/jul/01	2012/dec/01	GOOD	518.4459
832088	KANNIKA NW	146010 (100%)	Mineral	Claim	082L	2010/aug/25	2012/dec/01	GOOD	455.652
834066	KANNIKA NW 1 KANNIKA	146010 (100%)	Mineral	Claim	082L	2010/sep/22	2012/dec/01	GOOD	496.8931
887049	WEST 1	146010 (100%)	Mineral	Claim	082L	2011/aug/09	2013/aug/16	GOOD	124.4153
893530	KANNIKA MC	146010 (100%)	Mineral	Claim	082L	2011/aug/25	2013/aug/27	GOOD	455.8647
936182		146010 (100%)	Mineral	Claim	082L	2011/dec/05	2013/mar/16	GOOD	62.2077
940861		146010 (100%)	Mineral	Claim	082L	2012/jan/13	2013/jan/14	GOOD	228.0012
1011326	RIDGE	146010 (100%)	Mineral	Claim	082L	2012/jul/20	2013/aug/20	GOOD	20.7372

#### **4:0 LOCATION AND ACCESS**

The property is centered on Monashee Mountain contained by Yeoward Creek to the north, the Kettle River running through the center of the claims with Highway 6 at the south end. National Topographic System map reference is 82L/1 W and the claims are between Latitudes 50° 09'29.56" north to 50° 03'27.77" south and longitudes 118' 33'25.54" West to 118" 21'47.98" East.

Good access to the Monashee Mountain area is found about 80 km east of Vernon along Provincial Highway 6. Excellent 4 wheel drive access is provided from the south along the Kefer Lake access road, or just 1 km south of McIntyre Lake through the Logging road off the east side of the highway.

The nearest supply center is the town of Lumby and Cherryville, about 45 and 20 kilometers west of the property, respectively. The closest railhead is in the town of Lumby. Also, a major BC Hydro power line runs to the south of the property.

#### **5:0 REGIONAL GEOLOGY**

The regional geology places the Kannika property on the eastern edge of the Intermontane Belt at its boundary with the Omineca Crystalline Belt. The property is underlain by an east-southeast trending, south to west dipping sequence of volcanic and sedimentary rocks belonging to the Carboniferous and Permian Thompson Assemblage. Mineralization is observed at several small quartz veins on the Kannika Property. Pyrite is common as fine fracture fillings, and the content of pyrite increases in the vicinity of intrusive rocks, the old mine workings and the Nelson batholith.

#### **0:6 PHYSIOGRAPHY, VEGETATION AND CLIMATE**

The Kannika Gold property is located in the Whatshan Range of the Monashee Mountains, which is immediately east of the Shuswap Highlands. Elevations range approximately 850 meters on Monashee Pass Creek to 1830 meters above sea level on top of Monashee Mountain. A rolling upland forms the upper parts of the mountains with deeply incised drainages creating steep valley flanks.

#### **0:7 TOMPSON ASSEMBLAGE**

The volcanic flow rocks are typically massive, aphanitic, pale green dacite and less commonly medium to dark green andesite and basalt. These are typically porphyritic with small phenocrysts of augite or hornblende. Intercalations of pale to dark green massive tuff, lapilli tuff and flow breccia is common. Tuffaceous units may contain phenocrysts of feldspar and hornblende. Pyrite is typically found as fine to coarse disseminations in all volcanic rocks in trace to 1% concentrations (Duba & Gihmour, 1993). Some volcanic rocks similar to the ones listed were found along traverses inside the claim boundaries.

Sedimentary rocks on the Monashee property commonly include a grey to black, rusty brown weathered, massive to fissile argillite and a light to medium grey, massive, recrystallized limestone. A grey-green to light brown thinly bedded to massive, finegrained volcanoclastic sandstone and siltstone was observed in the southern part of the property (Duba & Gilmour, 1993). The gossanous character of the rusty brown weathered argillite prompted soil sampling grid to the northwest of the old *Gossan* grid in the 2000 work.

A talus slope of magnetite was discovered at the headwaters of Marsh Creek that extends 200 meters long by 300 meters wide (rock sample 07-11) Granodiorite with leached out pyrite cubes was found on west side of *Gossan* grid as talus. This suggests that the sedimentary/Volcanic contact is within the *Gossan* grid boundary. Recrystallized limestone with dark grey argillaceous limestone and calcareous argillite is the predominate sedimentary rock at the top of the drainage that the *Gossan* grid covers and around the Morgan mine. Immediately to the west of the *Gossan* grid lies a large outcrop of grey to black, rusty brown weathered argillite. Limestone with a similar composition to the *Gossan* was found on and around the Southeast grid.

### **0:8 INTRUSIVE ROCKS**

Only small intrusive bodies in the form of dykes and sills, less than 10 meters in width and dioritic in composition, are exposed within the claims. Diorite is grey, equigranular and extensively hydrothermally altered with development of chlorite biotite. It is associated with most of the polymetallic disseminated mineralization at the St. Paul workings. It does not appear to be compositionally similar to the large Jurassic batholith exposed to the south (Duba & Gilmour, 1993).

Dykes of feldspar porphyry as well as highly altered hypabyssal diorite plugs occur in a few locations around the property (St. Pau & Morgan workings).

### **0:9 MINERALIZATION**

Previous reports show at the Morgan and St. Paul workings contain gold and associated sulphide ores hosted by shallow dipping quartz veins, stringers and stockworks, and altered wall-rocks. At the St. Paul prospect mineralization, including pyrite-arsenopyrite-stibnite-sphalerite-tetrahedrite-galena silver and gold, is in part hosted by altered diorite dykes and sills (Duba & Gilmour, 1993).

Pyrite is common as fine disseminations and fractured fillings. The content of pyrite increases in the vicinity of intrusive rocks, the old mine workings and the Nelson batholith. Milky quartz occurs rarely as narrow veinlets in argillite but it is often found as angular to subround boulders throughout the property. It may be rusty stained along fractures due to the oxidized pyrite (Duba Gilmour, 1993).

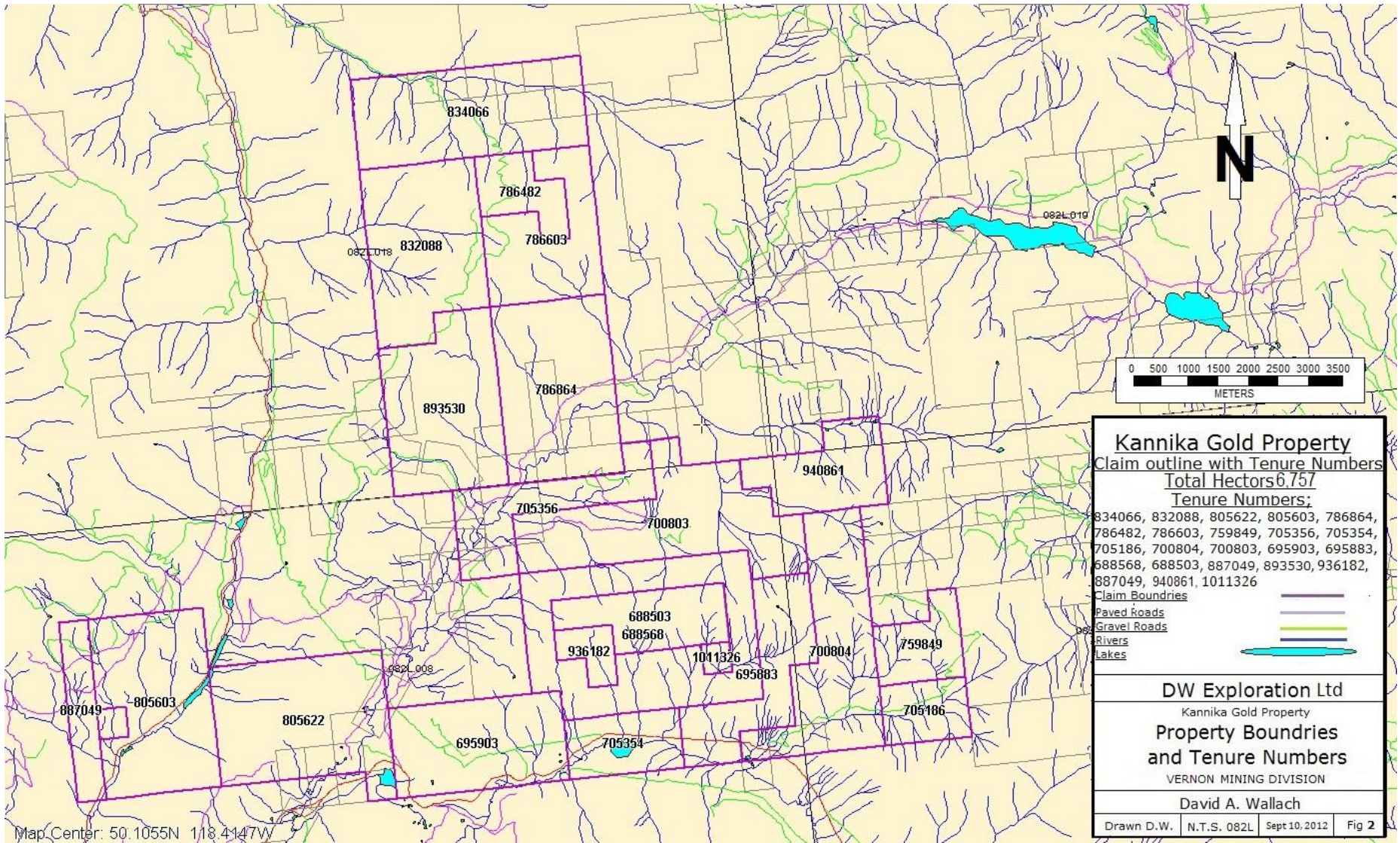
The drainages and Marsh creek all contain angular boulders of quartz that are rusty stained. Some silicified argillitic rock found along the logging road had significant amounts of chalcopyrite, pyrrhotite and pyrite (rock samples 1444287, 1444288, 1444289 & 1444290). In the Kannika 1 claim an exposed vein at the top of an adit, had a 1 m to 1.3 m quartz veins with sulphides (rock samples 1444278, 1444279, 1444280, and 1444281).

**0:10 LOCATION**

The Kannika Gold project (KGP) is in the Vernon Mining division, Monashee Mountains area, south east of Vernon B.C. in the upper Okanogan. (Figure 1)

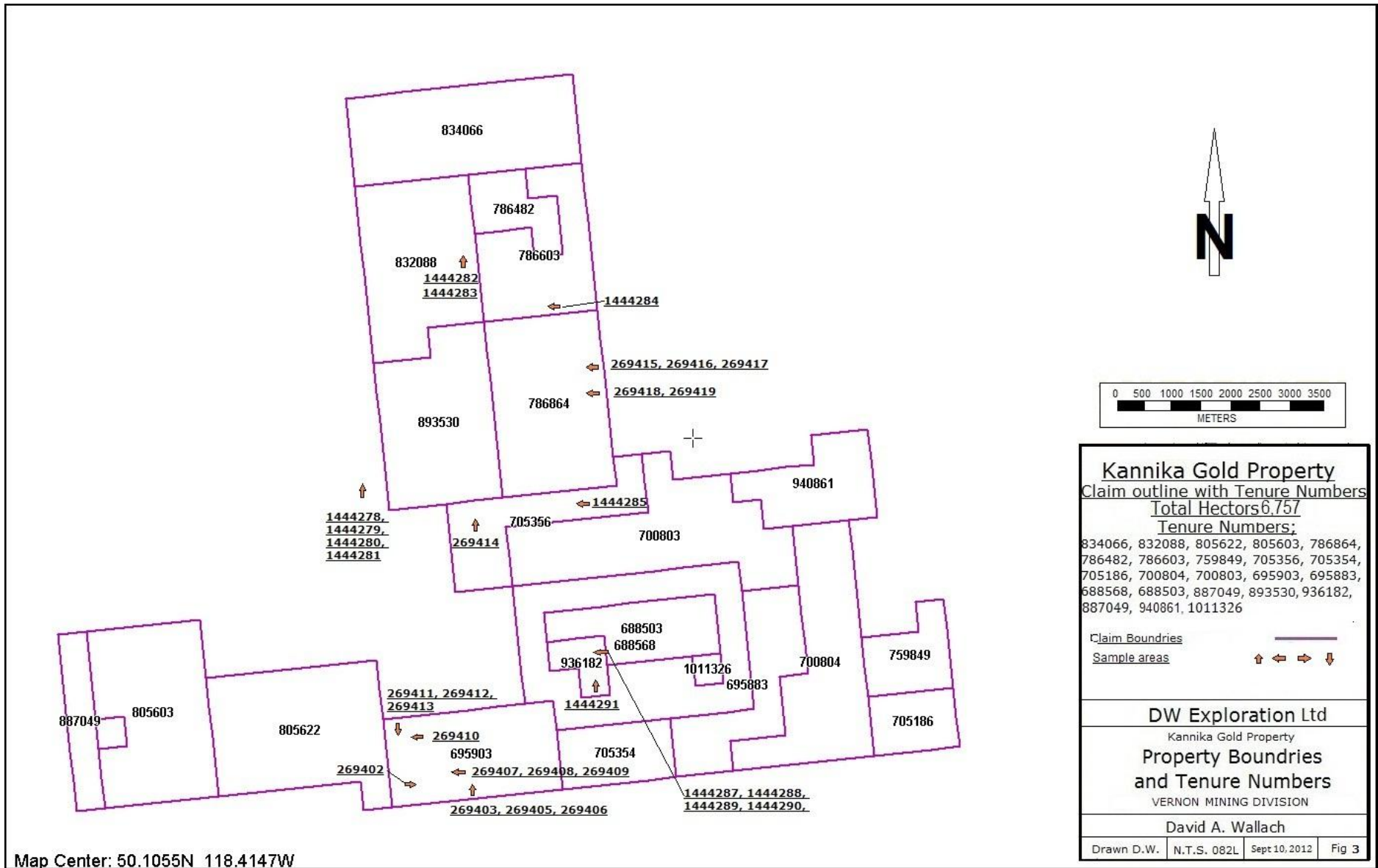


**0:11 CLAIM MAP (Figure 2)**

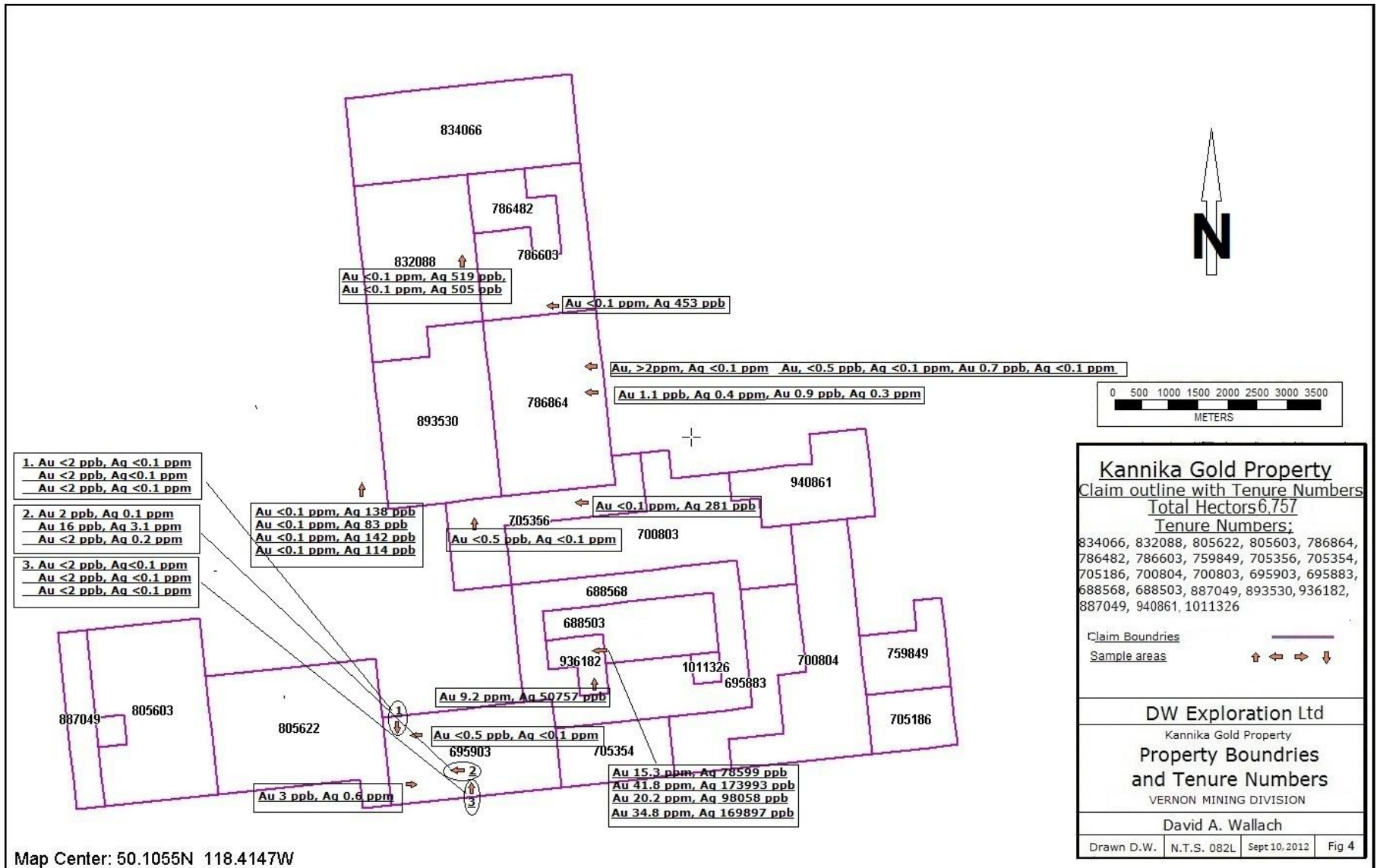




**0:12 SAMPLE LOCATIONS MAP (Figure 3)**



**0:13 SAMPLE ANALYSIS MAP**



**0:14 CERTIFICATES OF ANALYSIS**

## CERTIFICATE OF ANALYSIS

VAN12002493.1

### CLIENT JOB INFORMATION

Project: Kannika Gold  
Shipment ID:  
P.O. Number  
Number of Samples: 19

### SAMPLE DISPOSAL

PICKUP-PLP Client to Pickup Pulps  
PICKUP-RJT Client to Pickup Rejects

Acme does not accept responsibility for samples left at the laboratory after 90 days without prior written instructions for sample storage or return.

Invoice To: DW Exploration  
5241 Cobble Crescent  
Kelowna BC V1W 5C3  
Canada

CC:

### SAMPLE PREPARATION AND ANALYTICAL PROCEDURES

Method Code	Number of Samples	Code Description	Test Wgt (g)	Report Status	Lab
R200-250	19	Crush, split and pulverize 250 g rock to 200 mesh			VAN
3B	19	Fire assay fusion Au by ICP-ES	30	Completed	VAN
1DX	19	1:1:1 Aqua Regia digestion ICP-MS analysis	0.5	Completed	VAN

### ADDITIONAL COMMENTS



This report supersedes all previous preliminary and final reports with this file number dated prior to the date on this certificate. Signature indicates final approval; preliminary reports are unsigned and should be used for reference only. All results are considered the confidential property of the client. Acme assumes the liabilities for actual cost of analysis only. Results apply to samples as submitted. \*\*\* asterisk indicates that an analytical result could not be provided due to unusually high levels of interference from other elements.



Acme Analytical Laboratories (Vancouver) Ltd.  
 1020 Cordova St. East Vancouver BC V6A 4A3 Canada  
 Phone (604) 253-3158 Fax (604) 253-1716

www.acmelab.com

Client: **DW Exploration**  
 5241 Cobble Crescent  
 Kelowna BC V1W 5C3 Canada

Project: Kannika Gold  
 Report Date: June 18, 2012

Page: 2 of 2

Part: 1 of 2

CERTIFICATE OF ANALYSIS

VAN12002493.1

Method	WGHT	3B	1DX	1DX	1DX	1DX	1DX	1DX	1DX	1DX	1DX	1DX	1DX	1DX	1DX	1DX	1DX	1DX	1DX	1DX	
Analyte	Wgt	Au	Mo	Cu	Pb	Zn	Ag	Ni	Co	Mn	Fe	As	Au	Th	Sr	Cd	Sb	Bi	V	Ca	
Unit	kg	ppb	ppm	ppm	ppm	ppm	ppm	ppm	ppm	ppm	%	ppm	ppb	ppm	ppm	ppm	ppm	ppm	ppm	%	
MDL																					
G1	Prep Blank	<0.01	<2	<0.1	2.6	4.4	45	<0.1	2.4	4.1	555	1.93	<0.5	<0.5	6.2	68	<0.1	<0.1	<0.1	37	0.53
G1	Prep Blank	<0.01	<2	<0.1	3.6	4.4	45	<0.1	2.7	3.9	546	1.90	<0.5	<0.5	5.5	58	<0.1	<0.1	<0.1	36	0.49
269402	Rock	2.10	3	0.3	7.1	2.7	3	0.6	1.3	0.7	46	0.35	2.9	1.1	0.5	25	<0.1	0.3	<0.1	6	0.02
269403	Rock	0.64	<2	0.2	3.8	5.1	2	<0.1	1.4	0.4	74	0.41	0.8	0.6	<0.1	<1	<0.1	<0.1	<0.1	<2	0.01
269404	Rock	1.97	<2	0.3	0.9	1.1	3	<0.1	1.6	0.4	97	0.53	<0.5	<0.5	0.1	1	<0.1	<0.1	<0.1	<2	0.02
269405	Rock	0.99	<2	0.7	2.5	6.4	7	<0.1	2.8	0.9	256	1.06	2.6	<0.5	0.4	3	<0.1	<0.1	<0.1	<2	0.02
269406	Rock	1.93	<2	0.2	1.0	0.5	1	<0.1	1.4	0.3	73	0.44	<0.5	2.1	<0.1	1	<0.1	<0.1	<0.1	<2	0.01
269407	Rock	1.53	2	0.2	7.6	8.5	3	0.1	2.4	0.9	116	0.55	0.9	0.6	<0.1	5	<0.1	0.2	<0.1	<2	0.09
269408	Rock	0.73	16	0.3	4.0	2.7	14	3.1	4.4	1.0	446	1.42	1.6	19.8	<0.1	47	0.1	0.1	<0.1	<2	0.96
269409	Rock	1.46	<2	0.3	3.5	7.1	7	0.2	2.9	0.7	256	0.84	0.7	2.3	<0.1	38	<0.1	<0.1	<0.1	<2	0.84
269410	Rock	1.53	<2	0.2	2.5	3.1	3	<0.1	1.9	0.4	42	0.34	<0.5	<0.5	0.2	4	<0.1	<0.1	<0.1	<2	0.05
269411	Rock	0.80	<2	0.3	3.2	0.9	4	<0.1	2.1	1.0	62	0.45	<0.5	0.6	0.2	1	<0.1	<0.1	<0.1	<2	0.01
269412	Rock	1.35	<2	0.2	1.5	0.6	2	<0.1	1.5	0.4	46	0.34	<0.5	<0.5	<0.1	<1	<0.1	<0.1	<0.1	<2	<0.01
269413	Rock	1.43	<2	0.2	2.0	2.3	2	<0.1	1.3	0.4	54	0.35	<0.5	<0.5	0.1	<1	<0.1	<0.1	<0.1	<2	<0.01
269414	Rock	1.36	<2	0.3	2.6	5.9	5	<0.1	2.0	0.5	308	0.70	0.9	<0.5	<0.1	53	0.1	0.5	<0.1	<2	0.40
269415	Rock	1.17	<2	0.7	3.9	8.0	6	<0.1	2.4	0.8	291	1.04	1.2	<0.5	<0.1	14	<0.1	0.1	0.1	<2	0.21
269416	Rock	1.97	<2	0.9	3.3	16.0	7	<0.1	2.5	1.0	341	1.14	1.1	<0.5	<0.1	19	0.1	0.2	0.2	<2	0.40
269417	Rock	1.52	<2	1.2	4.2	11.9	8	<0.1	2.4	1.0	286	1.02	1.5	0.7	<0.1	7	0.1	0.1	0.1	<2	0.28
269418	Rock	1.19	<2	0.2	3.4	54.2	53	0.4	7.7	1.1	641	0.69	2.0	1.1	<0.1	43	0.2	0.2	0.1	<2	0.65
269419	Rock	2.22	<2	0.1	2.2	43.5	40	0.3	6.0	0.9	459	0.49	0.8	0.9	0.2	11	0.2	0.2	0.2	<2	0.09
269401	Rock	1.91	<2	4.2	2.0	2.0	2	<0.1	1.4	0.4	183	0.47	<0.5	0.8	0.9	52	<0.1	<0.1	<0.1	<2	0.02

This report supersedes all previous preliminary and final reports with this file number dated prior to the date on this certificate. Signature indicates final approval; preliminary reports are unsigned and should be used for reference only.



Acme Analytical Laboratories (Vancouver) Ltd.  
 1020 Cordova St. East Vancouver BC V6A 4A3 Canada  
 Phone (604) 253-3158 Fax (604) 253-1716

www.acmelab.com

Client: **DW Exploration**  
 5241 Cobble Crescent  
 Kelowna BC V1W 5C3 Canada

Project: Kannika Gold  
 Report Date: June 18, 2012

Page: 2 of 2

Part: 2 of 2

CERTIFICATE OF ANALYSIS

VAN12002493.1

Method	Analyte	Unit	MDL	1DX P %	1DX La ppm	1DX Cr ppm	1DX Mg %	1DX Ba ppm	1DX Ti %	1DX B ppm	1DX Al %	1DX Na %	1DX K %	1DX W ppm	1DX Hg ppm	1DX Sc ppm	1DX Ti ppm	1DX S %	1DX Ga ppm	1DX Se ppm	1DX Te ppm
G1	Prep Blank			0.074	15	6	0.50	155	0.129	<20	0.91	0.094	0.47	<0.1	<0.01	2.4	0.3	<0.05	5	<0.5	<0.2
G1	Prep Blank			0.076	14	5	0.50	143	0.119	<20	0.85	0.076	0.44	<0.1	<0.01	2.2	0.3	<0.05	5	<0.5	<0.2
269402	Rock			0.005	4	6	0.02	66	<0.001	<20	0.26	0.002	0.18	<0.1	0.02	0.7	0.1	<0.05	<1	<0.5	<0.2
269403	Rock			0.001	<1	5	<0.01	5	<0.001	<20	0.02	0.002	<0.01	<0.1	<0.01	0.1	<0.1	<0.05	<1	<0.5	<0.2
269404	Rock			0.002	<1	4	<0.01	8	<0.001	<20	0.03	0.003	0.01	<0.1	<0.01	0.2	<0.1	<0.05	<1	<0.5	<0.2
269405	Rock			0.012	<1	8	<0.01	15	<0.001	<20	0.06	0.006	0.02	<0.1	<0.01	0.4	<0.1	<0.05	<1	<0.5	<0.2
269406	Rock			0.003	<1	5	<0.01	5	<0.001	<20	0.02	0.003	<0.01	<0.1	<0.01	0.2	<0.1	<0.05	<1	<0.5	<0.2
269407	Rock			0.008	<1	7	<0.01	3	<0.001	<20	0.01	0.005	<0.01	<0.1	<0.01	0.4	<0.1	<0.05	<1	<0.5	<0.2
269408	Rock			0.027	<1	4	0.13	10	<0.001	<20	0.03	0.019	<0.01	<0.1	<0.01	2.2	<0.1	<0.05	<1	0.5	<0.2
269409	Rock			0.005	<1	9	0.11	4	<0.001	<20	0.01	0.008	<0.01	<0.1	<0.01	1.2	<0.1	<0.05	<1	<0.5	<0.2
269410	Rock			0.004	<1	8	0.02	8	0.007	<20	0.09	0.003	<0.01	<0.1	<0.01	0.3	<0.1	<0.05	<1	<0.5	<0.2
269411	Rock			0.001	<1	5	0.01	6	<0.001	<20	0.05	0.003	0.01	<0.1	<0.01	0.2	<0.1	<0.05	<1	<0.5	<0.2
269412	Rock			<0.001	<1	5	<0.01	3	<0.001	<20	0.03	0.002	<0.01	<0.1	<0.01	0.1	<0.1	<0.05	<1	<0.5	<0.2
269413	Rock			0.002	<1	7	0.01	3	<0.001	<20	0.03	0.002	<0.01	<0.1	<0.01	0.1	<0.1	<0.05	<1	<0.5	<0.2
269414	Rock			0.026	<1	6	0.15	15	0.001	<20	0.04	0.010	<0.01	<0.1	<0.01	0.7	<0.1	<0.05	<1	<0.5	<0.2
269415	Rock			0.043	<1	7	0.01	10	<0.001	<20	0.02	0.006	<0.01	<0.1	<0.01	0.7	<0.1	<0.05	<1	<0.5	<0.2
269416	Rock			0.057	<1	7	0.02	11	<0.001	<20	0.03	0.006	<0.01	<0.1	<0.01	0.9	<0.1	<0.05	<1	<0.5	<0.2
269417	Rock			0.021	<1	6	0.02	11	<0.001	<20	0.02	0.005	<0.01	<0.1	<0.01	0.7	<0.1	<0.05	<1	<0.5	<0.2
269418	Rock			0.007	<1	8	0.09	11	<0.001	<20	0.03	0.022	<0.01	<0.1	<0.01	0.5	<0.1	<0.05	<1	<0.5	<0.2
269419	Rock			0.011	1	8	0.01	14	<0.001	<20	0.04	0.026	<0.01	<0.1	<0.01	0.4	<0.1	<0.05	<1	0.5	<0.2
269401	Rock			0.003	5	7	<0.01	13	<0.001	<20	0.06	0.005	0.06	<0.1	<0.01	0.1	<0.1	<0.05	<1	<0.5	<0.2

This report supersedes all previous preliminary and final reports with this file number dated prior to the date on this certificate. Signature indicates final approval; preliminary reports are unsigned and should be used for reference only.



Acme Analytical Laboratories (Vancouver) Ltd.  
 1020 Cordova St. East Vancouver BC V6A 4A3 Canada  
 Phone (604) 253-3158 Fax (604) 253-1716

www.acmelab.com

Client: **DW Exploration**  
 5241 Cobble Crescent  
 Kelowna BC V1W 5C3 Canada

Project: Kannika Gold  
 Report Date: June 18, 2012

Page: 1 of 1

Part: 1 of 2

QUALITY CONTROL REPORT

VAN12002493.1

Method	WGHT	3B	1DX	1DX	1DX	1DX	1DX	1DX	1DX	1DX	1DX	1DX	1DX	1DX	1DX	1DX	1DX	1DX	1DX	1DX	
Analyte	Wgt	Au	Mo	Cu	Pb	Zn	Ag	Ni	Co	Mn	Fe	As	Au	Th	Sr	Cd	Sb	Bi	V	Ca	
Unit	kg	ppb	ppm	ppm	ppm	ppm	ppm	ppm	ppm	ppm	%	ppm	ppb	ppm	ppm	ppm	ppm	ppm	ppm	%	
MDL	0.01	2	0.1	0.1	0.1	1	0.1	0.1	0.1	1	0.01	0.5	0.5	0.1	1	0.1	0.1	0.1	2	0.01	
Pulp Duplicates																					
269413	Rock	1.43	<2	0.2	2.0	2.3	2	<0.1	1.3	0.4	54	0.35	<0.5	<0.5	0.1	<1	<0.1	<0.1	<0.1	<2	<0.01
REP 269413	QC			0.1	2.1	2.2	2	<0.1	1.3	0.5	52	0.34	<0.5	<0.5	0.1	<1	<0.1	<0.1	<0.1	<2	<0.01
Core Reject Duplicates																					
269416	Rock	1.97	<2	0.9	3.3	16.0	7	<0.1	2.5	1.0	341	1.14	1.1	<0.5	<0.1	19	0.1	0.2	0.2	<2	0.40
DUP 269416	QC		<2	1.1	3.6	16.1	8	<0.1	3.0	1.1	344	1.23	1.3	<0.5	<0.1	19	<0.1	0.2	0.1	<2	0.40
Reference Materials																					
STD DS9	Standard			13.2	109.6	134.4	315	2.0	39.5	7.5	567	2.30	26.3	114.0	6.8	75	2.6	5.8	7.6	39	0.74
STD DS9	Standard			13.0	103.6	121.3	309	1.8	40.4	7.4	577	2.31	24.5	105.0	5.9	75	2.0	4.4	6.1	40	0.72
STD OREAS45CA	Standard			1.0	496.5	22.0	63	0.2	247.5	90.3	919	15.56	4.0	42.7	7.0	15	<0.1	0.2	0.2	204	0.41
STD OREAS45CA	Standard			1.0	502.7	20.2	56	0.3	248.0	93.1	905	16.15	3.3	41.3	6.8	13	<0.1	0.1	<0.1	209	0.42
STD OXC88	Standard			208																	
STD OXC88	Standard			202																	
STD OXG99	Standard			958																	
STD OXG99	Standard			945																	
STD OXC88 Expected				203																	
STD OXG99 Expected				932																	
STD DS9 Expected				12.84	108	126	317	1.83	40.3	7.6	575	2.33	25.5	118	6.38	69.6	2.4	4.94	6.32	40	0.7201
STD OREAS45CA Expected				1	494	20	60	0.275	240	92	943	15.69	3.8	43	7	15	0.1	0.13	0.19	215	0.4265
BLK	Blank		<2																		
BLK	Blank		<2																		
BLK	Blank		<2																		
BLK	Blank		<2																		
BLK	Blank			<0.1	<0.1	<0.1	<1	<0.1	<0.1	<0.1	<1	<0.01	<0.5	<0.5	<0.1	<1	<0.1	<0.1	<0.1	<2	<0.01
BLK	Blank			<0.1	<0.1	<0.1	<1	<0.1	<0.1	<0.1	<1	<0.01	<0.5	<0.5	<0.1	<1	<0.1	<0.1	<0.1	<2	<0.01
Prep Wash																					
G1	Prep Blank	<0.01	<2	<0.1	2.6	4.4	45	<0.1	2.4	4.1	555	1.93	<0.5	<0.5	6.2	68	<0.1	<0.1	<0.1	37	0.53
G1	Prep Blank	<0.01	<2	<0.1	3.6	4.4	45	<0.1	2.7	3.9	546	1.90	<0.5	<0.5	5.5	58	<0.1	<0.1	<0.1	36	0.49

This report supersedes all previous preliminary and final reports with this file number dated prior to the date on this certificate. Signature indicates final approval; preliminary reports are unsigned and should be used for reference only.



Acme Analytical Laboratories (Vancouver) Ltd.  
1020 Cordova St. East Vancouver BC V6A 4A3 Canada  
Phone (604) 253-3158 Fax (604) 253-1716

www.acmelab.com

Client: **DW Exploration**  
5241 Cobble Crescent  
Kelowna BC V1W 5C3 Canada

Project: Kannika Gold  
Report Date: June 18, 2012

Page: 1 of 1

Part: 2 of 2

QUALITY CONTROL REPORT

VAN12002493.1

Method	Analyte	Unit	MDL	1DX P	1DX La	1DX Cr	1DX Mg	1DX Ba	1DX Ti	1DX B	1DX Al	1DX Na	1DX K	1DX W	1DX Hg	1DX Sc	1DX TI	1DX S	1DX Ga	1DX Se	1DX Te
				%	ppm	ppm	%	ppm	%	ppm	%	%	%	ppm	ppm	ppm	ppm	%	ppm	ppm	ppm
Pulp Duplicates																					
269413	Rock			0.002	<1	7	0.01	3	<0.001	<20	0.03	0.002	<0.01	<0.1	<0.01	0.1	<0.1	<0.05	<1	<0.5	<0.2
REP 269413	QC			0.002	<1	8	0.01	3	<0.001	<20	0.03	0.002	<0.01	<0.1	<0.01	0.2	<0.1	<0.05	<1	<0.5	<0.2
Core Reject Duplicates																					
269416	Rock			0.057	<1	7	0.02	11	<0.001	<20	0.03	0.006	<0.01	<0.1	<0.01	0.9	<0.1	<0.05	<1	<0.5	<0.2
DUP 269416	QC			0.057	<1	9	0.02	11	<0.001	<20	0.03	0.006	<0.01	<0.1	<0.01	0.9	<0.1	<0.05	<1	<0.5	<0.2
Reference Materials																					
STD DS9	Standard			0.084	15	115	0.61	324	0.118	<20	0.94	0.084	0.40	2.6	0.19	2.5	5.8	0.17	5	5.8	5.5
STD DS9	Standard			0.080	13	123	0.61	306	0.112	<20	0.96	0.085	0.40	2.9	0.19	2.5	5.3	0.17	5	5.4	4.4
STD OREAS45CA	Standard			0.037	17	692	0.14	169	0.128	<20	3.61	0.011	0.08	<0.1	0.03	43.4	<0.1	<0.05	19	<0.5	<0.2
STD OREAS45CA	Standard			0.039	17	745	0.15	161	0.151	<20	3.69	0.011	0.08	<0.1	0.02	44.7	<0.1	<0.05	18	<0.5	<0.2
STD OXC88	Standard																				
STD OXC88	Standard																				
STD OXG99	Standard																				
STD OXG99	Standard																				
STD OXC88 Expected																					
STD OXG99 Expected																					
STD DS9 Expected				0.0819	13.3	121	0.6165	330	0.1108		0.9577	0.0853	0.395	2.89	0.2	2.5	5.3	0.1615	4.59	5.2	5.02
STD OREAS45CA Expected				0.0385	15.9	709	0.1358	164	0.128		3.592	0.0075	0.0717		0.03	39.7	0.07	0.021	18.4	0.5	
BLK	Blank																				
BLK	Blank																				
BLK	Blank																				
BLK	Blank																				
BLK	Blank			<0.001	<1	<1	<0.01	<1	<0.001	<20	<0.01	<0.001	<0.01	<0.1	<0.01	<0.1	<0.1	<0.05	<1	<0.5	<0.2
BLK	Blank			<0.001	<1	<1	<0.01	<1	<0.001	<20	<0.01	<0.001	<0.01	<0.1	<0.01	<0.1	<0.1	<0.05	<1	<0.5	<0.2
Prep Wash																					
G1	Prep Blank			0.074	15	6	0.50	155	0.129	<20	0.91	0.094	0.47	<0.1	<0.01	2.4	0.3	<0.05	5	<0.5	<0.2
G1	Prep Blank			0.076	14	5	0.50	143	0.119	<20	0.85	0.076	0.44	<0.1	<0.01	2.2	0.3	<0.05	5	<0.5	<0.2

This report supersedes all previous preliminary and final reports with this file number dated prior to the date on this certificate. Signature indicates final approval; preliminary reports are unsigned and should be used for reference only.





Acme Analytical Laboratories (Vancouver) Ltd.  
1020 Cordova St. East Vancouver BC V6A 4A3 Canada

www.acmelab.com

Client: **DW Exploration**  
5241 Cobble Crescent  
Kelowna BC V1W 5C3 Canada

Submitted By: Dave Wallach  
Receiving Lab: Canada-Vancouver  
Received: August 15, 2012  
Report Date: August 23, 2012  
Page: 1 of 2

**CERTIFICATE OF ANALYSIS**

**VAN12003813.1**

**CLIENT JOB INFORMATION**

Project: Kannika Gold  
Shipment ID:  
P.O. Number  
Number of Samples: 15

**SAMPLE PREPARATION AND ANALYTICAL PROCEDURES**

Method Code	Number of Samples	Code Description	Test Wgt (g)	Report Status	Lab
R200-250	15	Crush, split and pulverize 250 g rock to 200 mesh			VAN
Group 1T	15	4 Acid digestion Ultratrace ICP-MS analysis	0.25	Completed	VAN

**SAMPLE DISPOSAL**

PICKUP-PLP Client to Pickup Pulps  
PICKUP-RJT Client to Pickup Rejects

**ADDITIONAL COMMENTS**

Acme does not accept responsibility for samples left at the laboratory after 90 days without prior written instructions for sample storage or return.

Invoice To: DW Exploration  
5241 Cobble Crescent  
Kelowna BC V1W 5C3  
Canada

CC:



This report supersedes all previous preliminary and final reports with this file number dated prior to the date on this certificate. Signature indicates final approval; preliminary reports are unsigned and should be used for reference only. All results are considered the confidential property of the client. Acme assumes the liabilities for actual cost of analysis only. Results apply to samples as submitted. \*\*\* asterisk indicates that an analytical result could not be provided due to unusually high levels of interference from other elements.



Acme Analytical Laboratories (Vancouver) Ltd.  
 1020 Cordova St. East Vancouver BC V6A 4A3 Canada  
 Phone (604) 253-3158 Fax (604) 253-1716

www.acmelab.com

Client: **DW Exploration**  
 5241 Cobble Crescent  
 Kelowna BC V1W 5C3 Canada

Project: Kannika Gold  
 Report Date: August 23, 2012

Page: 2 of 2

Part: 1 of 4

**CERTIFICATE OF ANALYSIS**

**VAN12003813.1**

Method	WGHT	1T	1T	1T	1T	1T	1T	1T	1T	1T	1T	1T	1T	1T	1T	1T	1T	1T	1T	1T	
Analyte	Wgt	Mo	Cu	Pb	Zn	Ag	Ni	Co	Mn	Fe	As	U	Au	Th	Sr	Cd	Sb	Bi	V	Ca	
Unit	kg	ppm	ppm	ppm	ppm	ppb	ppm	ppm	ppm	%	ppm	ppm	ppm	ppm	ppm	ppm	ppm	ppm	ppm	%	
MDL	0.01	0.05	0.02	0.02	0.2	20	0.1	0.2	2	0.02	0.2	0.1	0.1	0.1	1	0.02	0.02	0.04	1	0.02	
G1	Prep Blank	<0.01	0.13	3.79	20.05	53.1	<20	5.1	5.4	752	2.25	1.2	3.1	<0.1	9.6	745	0.04	0.08	0.05	51	2.37
G1	Prep Blank	<0.01	0.13	2.65	20.33	54.5	<20	3.9	4.9	768	2.32	2.0	3.2	<0.1	10.0	733	0.05	0.04	<0.04	51	2.37
1444277	Rock	1.20	3.13	59.59	10.87	118.6	815	44.6	10.5	280	2.99	31.2	2.6	<0.1	6.9	123	0.78	3.65	0.12	128	2.63
1444278	Rock	1.22	14.03	34.80	3.07	451.5	138	248.8	21.3	1300	4.47	382.0	1.7	<0.1	1.0	446	0.41	7.72	0.04	86	8.80
1444279	Rock	1.05	4.80	26.56	2.92	70.7	83	197.8	28.2	1284	4.36	221.4	1.0	<0.1	1.2	544	0.23	3.85	<0.04	117	7.85
1444280	Rock	1.86	16.55	50.87	3.82	84.2	142	361.4	34.8	1294	4.85	474.4	1.6	<0.1	1.6	414	0.30	9.98	0.05	126	7.02
1444281	Rock	1.16	16.38	45.93	2.47	90.5	114	292.0	20.3	551	2.71	458.8	1.9	<0.1	1.4	18	0.66	5.94	<0.04	70	0.37
1444282	Rock	1.52	1.85	47.47	11.37	87.0	519	21.5	4.3	210	4.34	3.0	1.1	<0.1	1.3	63	0.07	0.95	<0.04	147	0.08
1444283	Rock	1.04	1.26	73.68	8.26	110.1	505	12.2	12.9	666	6.60	4.2	1.2	<0.1	2.8	226	0.11	0.53	<0.04	307	0.67
1444284	Rock	1.57	1.72	41.75	9.16	69.5	453	20.2	3.6	220	3.58	1.4	1.0	<0.1	1.3	61	0.06	1.26	<0.04	126	0.07
1444285	Rock	0.41	2.87	10.97	20.25	30.2	281	14.7	2.0	5585	2.40	8.2	0.6	<0.1	0.9	152	0.43	3.96	<0.04	13	0.49
1444286	Rock	0.62	0.85	17.28	4.72	47.9	187	38.9	9.1	933	2.18	0.2	0.9	<0.1	0.8	1066	0.65	0.43	<0.04	60	22.40
1444287	Rock	1.59	15.88	9.02	1280	458.5	78599	1.6	0.5	107	1.19	4.6	<0.1	15.3	<0.1	<1	37.74	2.16	2.78	2	<0.02
1444288	Rock	0.65	47.25	25.12	3836	122.4	173993	1.6	1.6	88	1.91	<0.2	<0.1	41.8	0.2	12	9.84	4.11	25.97	4	0.14
1444289	Rock	1.84	34.68	42.84	1711	675.8	98058	2.0	1.6	120	1.93	2.7	<0.1	20.2	0.3	35	37.08	2.23	11.06	7	0.29
1444290	Rock	1.87	67.51	15.66	3678	477.9	169897	1.2	0.7	66	1.77	2.3	<0.1	34.8	0.1	8	38.80	5.00	4.29	1	0.02
1444291	Rock	0.61	50.14	32.07	1024	35.7	50757	2.2	4.9	552	1.95	2.8	0.3	9.2	1.1	155	1.83	1.44	13.17	28	2.06

This report supersedes all previous preliminary and final reports with this file number dated prior to the date on this certificate. Signature indicates final approval; preliminary reports are unsigned and should be used for reference only.



1020 Cordova St. East Vancouver BC V6A 4A3 Canada  
Phone (604) 253-3158 Fax (604) 253-1716

Acme Analytical Laboratories (Vancouver) Ltd.

www.acmelab.com

Client: **DW Exploration**  
5241 Cobble Crescent  
Kelowna BC V1W 5C3 Canada

Project: Kannika Gold  
Report Date: August 23, 2012

Page: 2 of 2

Part: 2 of 4

CERTIFICATE OF ANALYSIS

VAN12003813.1

Method	1T	1T	1T	1T	1T	1T	1T	1T	1T	1T	1T	1T	1T	1T	1T	1T	1T	1T	1T	1T	1T
Analyte	P	La	Cr	Mg	Ba	Ti	Al	Na	K	W	Zr	Sn	Be	Sc	S	Y	Ce	Pr	Nd	Sm	
Unit	%	ppm	ppm	%	ppm	%	%	%	%	ppm	ppm	ppm	ppm	ppm	%	ppm	ppm	ppm	ppm	ppm	
MDL	0.001	0.1	1	0.02	1	0.001	0.02	0.002	0.02	0.1	0.2	0.1	1	0.1	0.04	0.1	0.02	0.1	0.1	0.1	
G1	Prep Blank	0.073	29.5	17	0.72	1128	0.282	7.26	2.658	3.07	0.2	15.3	1.4	2	6.2	<0.04	18.5	61.48	7.3	25.7	4.4
G1	Prep Blank	0.082	33.3	14	0.68	1090	0.286	7.54	2.734	3.20	0.2	16.3	1.6	3	5.5	<0.04	18.7	63.78	7.8	25.5	4.8
1444277	Rock	0.148	26.0	88	1.32	801	0.340	6.80	0.721	2.74	1.1	63.7	1.7	1	13.5	0.09	13.5	47.12	6.6	24.2	5.0
1444278	Rock	0.052	8.8	1575	3.10	231	0.208	3.16	0.029	0.81	6.7	32.5	0.8	<1	11.9	0.08	19.0	14.70	2.1	7.8	2.1
1444279	Rock	0.049	7.2	610	3.12	230	0.263	3.31	0.034	1.03	7.7	18.6	0.7	<1	17.4	0.16	14.3	13.70	2.1	8.2	2.2
1444280	Rock	0.069	8.1	926	2.71	225	0.343	4.01	0.028	0.95	13.2	31.3	0.9	<1	18.3	0.32	15.0	15.31	2.2	9.2	2.2
1444281	Rock	0.075	7.9	742	0.13	182	0.250	2.95	0.015	0.16	12.5	25.1	0.6	<1	7.3	0.10	10.3	13.71	2.1	7.4	1.7
1444282	Rock	0.019	7.2	45	0.84	268	0.443	4.56	0.541	1.21	0.5	41.1	0.7	<1	15.9	0.52	12.0	11.51	2.0	7.2	1.7
1444283	Rock	0.123	12.3	44	2.44	136	0.638	7.27	3.026	0.32	0.7	52.9	1.0	<1	23.9	0.67	18.1	23.45	3.3	13.8	3.7
1444284	Rock	0.014	4.0	39	0.89	323	0.323	4.06	0.385	1.02	0.5	37.2	0.6	<1	13.6	0.42	11.3	7.31	1.2	4.3	0.9
1444285	Rock	0.033	6.1	20	0.08	144	0.024	0.84	0.568	0.06	0.2	6.1	<0.1	<1	2.8	<0.04	9.5	6.52	1.5	5.8	1.6
1444286	Rock	0.047	7.5	75	1.39	504	0.255	3.67	1.234	0.47	0.5	25.9	0.3	<1	8.7	0.27	14.1	11.87	2.0	7.1	1.6
1444287	Rock	<0.001	0.3	28	<0.02	5	0.001	0.08	0.004	<0.02	0.1	0.3	<0.1	<1	0.1	0.73	0.5	0.22	<0.1	0.2	<0.1
1444288	Rock	0.007	1.0	5	0.08	78	0.014	0.52	0.013	0.31	1.1	0.3	0.1	<1	0.5	1.15	0.7	1.97	0.2	0.9	0.3
1444289	Rock	0.011	1.8	42	0.09	108	0.024	0.89	0.103	0.61	2.6	0.5	<0.1	<1	0.8	1.20	1.4	3.66	0.5	1.6	0.5
1444290	Rock	<0.001	0.5	5	<0.02	10	0.002	0.21	0.011	0.05	0.3	0.3	<0.1	<1	0.4	1.57	0.4	1.37	0.1	0.5	<0.1
1444291	Rock	0.048	7.7	21	0.34	288	0.133	3.56	0.986	1.88	9.6	1.8	0.4	<1	3.7	0.99	4.6	16.19	2.1	8.1	1.9

This report supersedes all previous preliminary and final reports with this file number dated prior to the date on this certificate. Signature indicates final approval; preliminary reports are unsigned and should be used for reference only.



Acme Analytical Laboratories (Vancouver) Ltd.  
 1020 Cordova St. East Vancouver BC V6A 4A3 Canada  
 Phone (604) 253-3158 Fax (604) 253-1716

www.acmelab.com

Client: **DW Exploration**  
 5241 Cobble Crescent  
 Kelowna BC V1W 5C3 Canada

Project: Kannika Gold  
 Report Date: August 23, 2012

Page: 2 of 2

Part: 3 of 4

**CERTIFICATE OF ANALYSIS**

**VAN12003813.1**

Method	Analyte	1T	1T	1T	1T	1T	1T	1T	1T	1T	1T	1T	1T	1T	1T	1T	1T	1T	1T	1T	1T
Unit		Eu	Gd	Tb	Dy	Ho	Er	Tm	Yb	Lu	Hf	Li	Rb	Ta	Nb	Cs	Ga	In	Re	Se	Te
MDL		ppm	ppm	ppm	ppm	ppm	ppm	ppm	ppm	ppm	ppm	ppm	ppm	ppm	ppm	ppm	ppm	ppm	ppm	ppm	ppm
G1	Prep Blank	1.3	3.4	0.5	3.1	0.6	1.9	0.3	1.9	0.3	0.84	32.5	123.9	1.5	23.98	4.4	18.60	0.02	<0.002	<0.3	0.21
G1	Prep Blank	1.3	3.9	0.6	3.3	0.7	1.9	0.3	2.0	0.3	0.85	32.4	128.7	1.5	25.08	4.4	17.94	0.02	0.003	<0.3	0.13
1444277	Rock	1.1	4.1	0.6	2.5	0.5	1.4	0.3	1.7	0.3	1.83	52.6	90.2	0.4	6.48	11.2	15.46	0.05	0.006	2.2	0.24
1444278	Rock	0.7	2.4	0.5	2.8	0.7	1.9	0.3	1.8	0.3	0.86	28.0	37.9	0.1	2.04	5.1	6.71	0.03	0.008	<0.3	2.10
1444279	Rock	0.9	2.2	0.4	2.4	0.5	1.4	0.2	1.3	0.2	0.61	48.9	47.4	0.1	1.76	6.9	7.21	0.04	0.003	<0.3	1.56
1444280	Rock	0.7	2.4	0.4	2.4	0.6	1.5	0.2	1.5	0.2	1.04	81.6	46.0	0.2	2.85	6.5	8.28	0.04	0.014	<0.3	0.98
1444281	Rock	0.5	1.8	0.3	1.9	0.4	1.1	0.1	1.0	0.1	0.75	26.2	8.2	0.2	2.44	2.7	5.94	0.02	<0.002	<0.3	0.11
1444282	Rock	0.4	1.6	0.3	1.9	0.4	1.2	0.2	1.3	0.2	1.10	16.7	46.0	0.2	2.86	1.7	10.83	0.05	0.010	2.3	0.10
1444283	Rock	1.1	3.2	0.6	3.4	0.6	1.9	0.3	1.7	0.2	1.63	44.8	13.4	0.2	2.88	0.9	13.55	0.03	0.008	4.1	0.11
1444284	Rock	0.3	1.1	0.3	1.6	0.4	1.2	0.2	1.1	0.2	1.03	18.5	40.7	0.1	2.45	1.8	9.69	0.03	0.006	2.5	0.12
1444285	Rock	0.6	1.8	0.3	1.7	0.3	0.8	<0.1	0.6	<0.1	0.14	1.4	3.9	<0.1	0.77	0.5	1.35	0.01	<0.002	<0.3	0.06
1444286	Rock	0.7	2.2	0.4	2.1	0.5	1.3	0.2	1.2	0.2	0.70	14.9	14.8	0.1	2.11	1.0	6.46	0.02	0.005	1.0	2.79
1444287	Rock	<0.1	<0.1	<0.1	<0.1	<0.1	<0.1	<0.1	<0.1	<0.1	<0.02	7.0	0.5	<0.1	0.13	0.3	0.55	0.11	<0.002	1.9	54.50
1444288	Rock	<0.1	0.2	<0.1	0.2	<0.1	<0.1	<0.1	<0.1	<0.1	<0.02	3.7	7.1	<0.1	0.29	0.4	1.59	0.02	<0.002	6.6	117.9
1444289	Rock	<0.1	0.3	<0.1	0.2	<0.1	0.1	<0.1	0.1	<0.1	0.02	3.9	12.2	<0.1	0.51	0.5	2.28	0.09	<0.002	2.9	66.94
1444290	Rock	<0.1	<0.1	<0.1	<0.1	<0.1	<0.1	<0.1	<0.1	<0.1	<0.02	2.8	1.8	<0.1	0.13	0.4	0.45	0.05	0.003	5.2	80.61
1444291	Rock	0.5	1.3	0.2	1.0	0.2	0.5	<0.1	0.6	<0.1	0.11	14.5	44.3	0.1	2.22	0.9	8.86	0.02	<0.002	1.5	31.08

This report supersedes all previous preliminary and final reports with this file number dated prior to the date on this certificate. Signature indicates final approval; preliminary reports are unsigned and should be used for reference only.



Acme Analytical Laboratories (Vancouver) Ltd.  
1020 Cordova St. East Vancouver BC V6A 4A3 Canada  
Phone (604) 253-3158 Fax (604) 253-1716

www.acmelab.com

Client: **DW Exploration**  
5241 Cobble Crescent  
Kelowna BC V1W 5C3 Canada

Project: Kannika Gold  
Report Date: August 23, 2012

Page: 2 of 2

Part: 4 of 4

### CERTIFICATE OF ANALYSIS

VAN12003813.1

Method	Analyte	Unit	MDL	1T	TI
				ppm	0.05
G1	Prep Blank			0.88	
G1	Prep Blank			0.88	
1444277	Rock			0.90	
1444278	Rock			0.31	
1444279	Rock			0.45	
1444280	Rock			0.52	
1444281	Rock			0.12	
1444282	Rock			0.22	
1444283	Rock			<0.05	
1444284	Rock			0.13	
1444285	Rock			<0.05	
1444286	Rock			0.16	
1444287	Rock			<0.05	
1444288	Rock			0.08	
1444289	Rock			0.13	
1444290	Rock			0.08	
1444291	Rock			0.24	

This report supersedes all previous preliminary and final reports with this file number dated prior to the date on this certificate. Signature indicates final approval; preliminary reports are unsigned and should be used for reference only.

## 0:15 CONCLUSION

The 2012 exploration program was a modest program due to funds available along with a late spring thaw, thus having to make several trips to the site over the course of the summer. A program will be set up for the summer of 2013 to complete a magnetic grid on the south end of the property.

## 0:16 STATEMENT OF COST

<b>Exploration Work type</b>	<b>Comment</b>	<b>Days</b>		
<b>Personnel (Name)* / Position</b>	<b>Field Days (list actual days)</b>	<b>Days</b>	<b>Rate</b>	<b>Subtotal*</b>
David A. Wallach		9	\$600.00	\$5,400.00
Mark Peabody		9	\$180.00	\$1,620.00
Report preparation		5.5	\$160.00	\$880.00
<b>Transportation</b>		<b>No.</b>	<b>Rate</b>	<b>Subtotal</b>
Truck rental	1 trucks	10.00	\$100.00	\$1,000.00
Fuel (litres/hour)	416 Liters of fuel used	416.00	\$1.32	\$549.12
ATV		10.00	\$88.00	\$880.00
<b>Accommodation &amp; Food</b>	<b>Rates per day</b>	<b>No.</b>	<b>Rate</b>	<b>Subtotal</b>
Hotel	33 foot trailer	10.00	\$100.00	\$1,000.00
Camp			\$0.00	\$0.00
Meals	day rate or actual costs-specify	10.00	\$58.33	\$583.30
<b>Equipment Rentals</b>				
Field Gear (Specify)	Chain saw, GPS x2, Hip Chain, ect...	10.00	\$61.00	\$610.00
Other (Specify)	Feild Suplies/ flag tape/ Hip string, ect..		\$20.00	\$120.00
<b>Geochemical Surveying</b>	<b>Number of Samples</b>	<b>No.</b>	<b>Rate</b>	<b>Subtotal</b>
Rock	<i>laboratory costs</i>	34.0	\$34.93	\$1,900.36
<b>Freight, rock samples</b>		1.0	\$48.00	\$48.00
<b>GRAND TOTAL:</b>				\$14,590.78

## **0:17 REFERENCES**

K.L. Daughtry	1982	Geochemical & Geophysical report on Monashee Mountain. Assessment Report No. 10967
W.R Gilmout S.F. Coombes	1992	Geological 62 Geochemical Report on the Monashee Project. Assessment Report No. 22575
D. Dub W.R. Gilmollr	1993	Geological & Geochemical Assessment Report on the Monashee Mountain. No. 23110
D.L. Melrose	1995	1994 Diamond Drilling Report Monashee Mountain Project Assessment No. 2391
Garrett Ainsworth	2000	Prospectors report 2000-30

## 0:18 QUALIFICATIONS

David A. Wallach is a 4th generation miner and prospector with 24 years experience from the ground up in open pit & underground drill/blasting, heavy equipment operator, timber man, prospector, geo technical field work, project management, tenure management, general manager, and President/director of a few small private exploration companies.

### Experience:

- Informing the shareholders of decisions made to move forward, writing annual newsletters.
- Communications with investors and board members.
- Oversee operations including promotions and investor relations.
- Prospecting (recognition), Grid lay out and sampling.
- Oversee all Tenure management and Mineral Claim Registration (acquisition); write Tenure management reports and recommendations.
- Tenure management reports and recommendations, (3700 Tenures in total, 3.7 million acres).
- Communications with CEO, President, Vice President, Geologists, Contractors, and Directors.
- Oversee all employees and or contractors (Canadian projects) with safety procedures, Employee ethics and morale.
- Write Mine Emergency Response Plans (MERP) for each project, (8 projects in total)
- Budget preparation and allowance.
- Coordinate all contractors and employees, according to project requirements, will working within due dates required by projects in order to stay within the aloud budget.
- Write technical & physical reports (SOW) and submit to the Ministry of Mines and Petroleum.
- Oversee all Supplies, equipment and tools need for field work, IE, Gridding & sampling, Line cutting, Prep for IP or Titan 24, Trenching, Road building, and Diamond drilling.
- Oversee soil/rock sample preparation for shipping to assay lab.
- Coordinate and oversee all communications and supplies for base camp and workshops.
- Stocking and taking inventory of supplies.
- Due diligents for property acquisition and or purchase.
- Apply for permits for various projects.
- Attend and man booth for trade shows.
- NWT Blasting ticket.
- Driller/ Blaster (Long hole, Drift, Raze).
- Timberman.
- Driller Helper (Underground, Open Pit /Tank drill).
- Diamond driller Helper (Underground & Surface).
- Heavy Equipment Operator (Rock Truck, Scoop, Tank Drill).