

**BC Geological Survey  
Assessment Report  
33501b**

**China Minerals Mining Corporation**

**2012 TAURUS PROPERTY DRILLING REPORT  
CASSIAR GOLD PROJECT**

Volume III – Figures 36-42 (drill sections) & Maps 1-3

Liard Mining Division  
NTS 104P/5  
59° 17' N Latitude; 129° 42' W Longitude  
UTM 6570800 mN; 460700 mE; Zone 9

-prepared for-

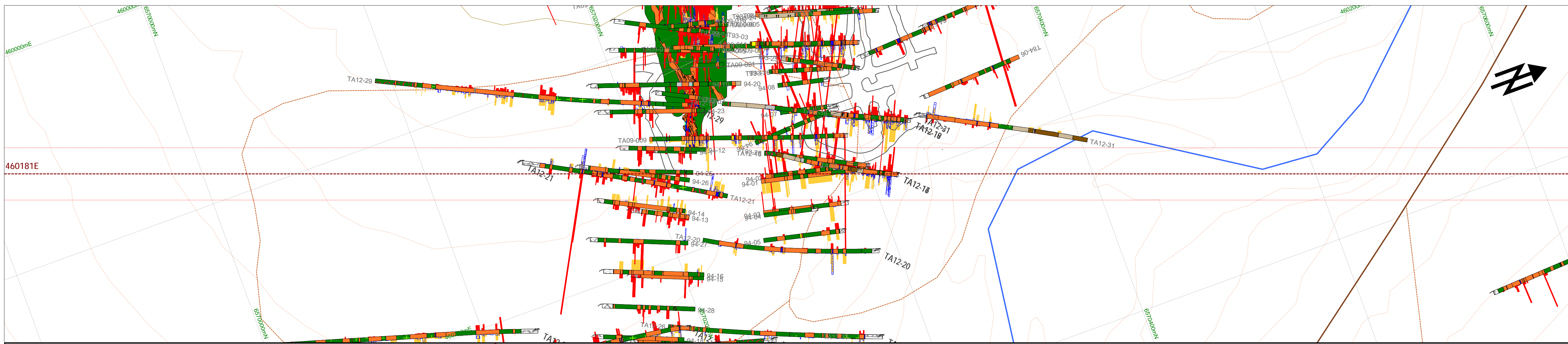
**CHINA MINERALS MINING CORPORATION**  
Suite 717, 1030 West Georgia Street  
Vancouver, BC, Canada, V6E 2Y3

-prepared by-

Margot McKeown  
Darcy Baker  
Ron Voordouw

**EQUITY EXPLORATION CONSULTANTS LTD.**  
Suite 200, 900 West Hastings Street  
Vancouver, BC, Canada, V6C 1E5

February 27, 2013

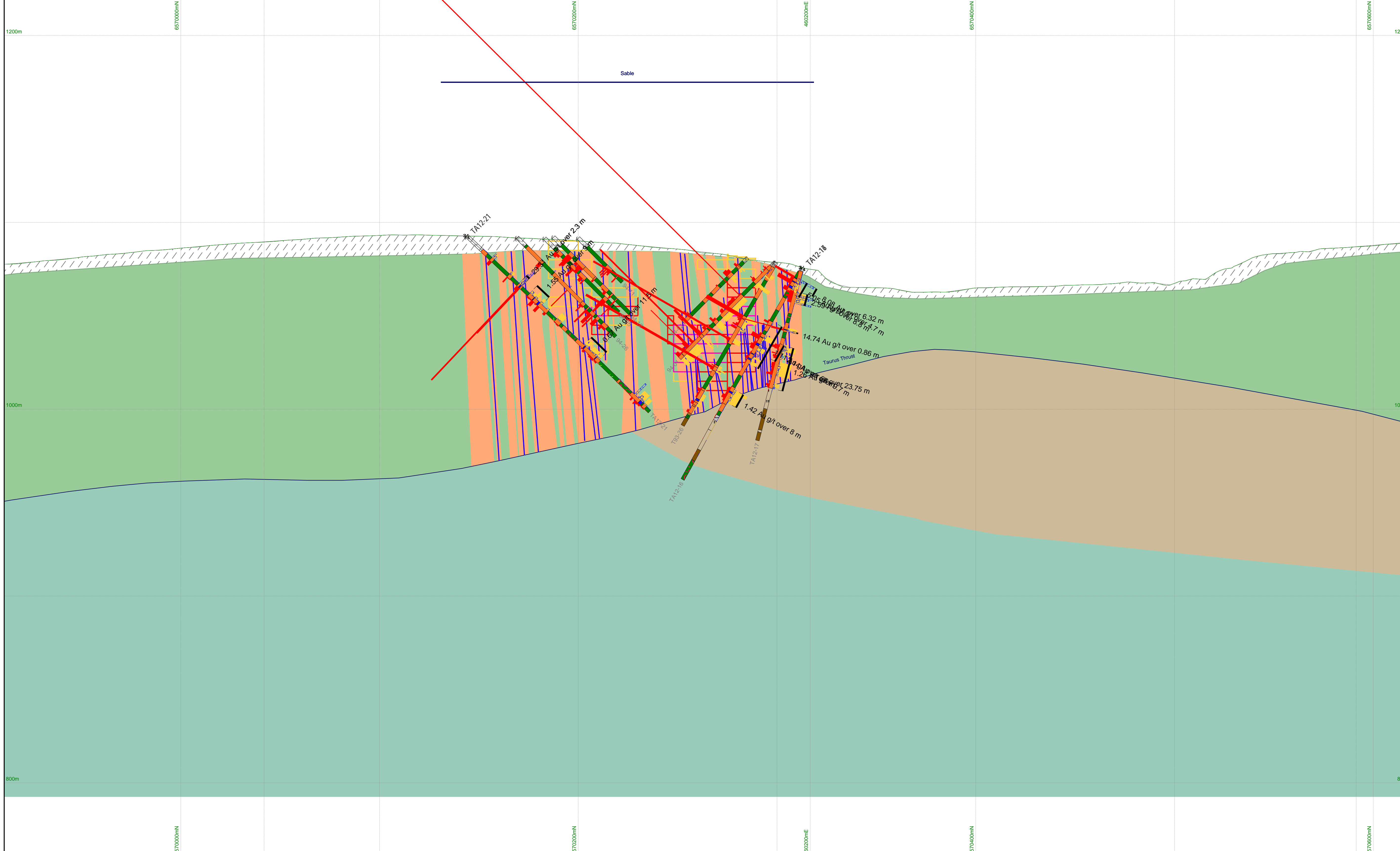


- Interpreted Lithology**
- Basalt (T1)
  - T3
  - Ankerite Altered Basalt (T2)
  - Chert/Argillite
  - Footwall Basalt
  - Mafic Dyke
  - Overburden
  - Faults
  - Thrust Faults
  - Quartz-Ankerite Shear Veins
  - Roads

- 2012 Drill holes**
- Historic Drill holes
  - Au g/t, 1 cm = 10 g/t
  - As ppm, 1 cm = 1000 ppm
  - Pyrite, 1cm = 10% PY

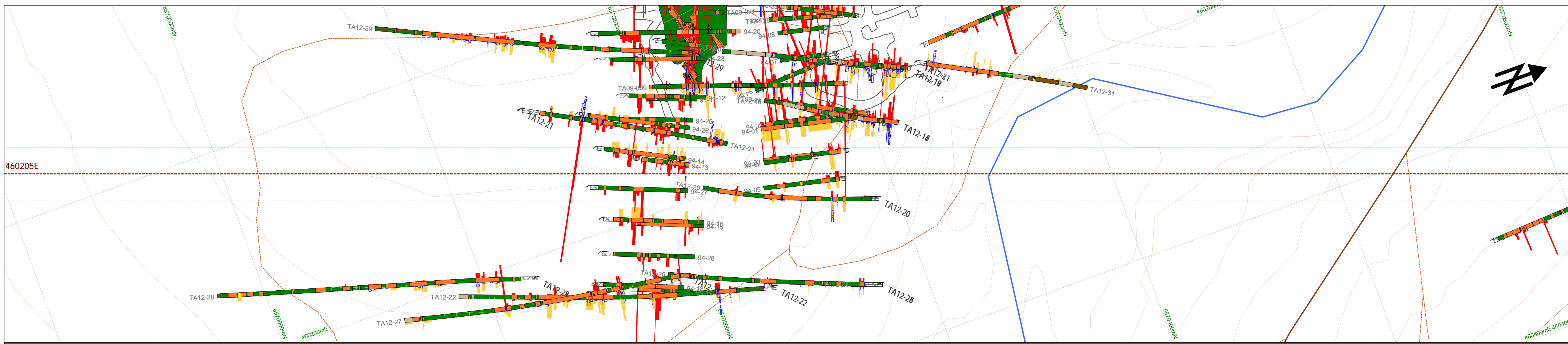
- Downhole and Surface Lithology**
- Basalt (T1)
  - Basalt - magnetite/jasper
  - Basalt - pillowed
  - Mafic Tuff
  - Basalt - AK alt (T2)
  - Chert
  - Chert - brecciated
  - Argillaceous Chert
  - Argillite
  - Mudstone
  - Siltstone
  - Qtz Vein
  - Carbonate Vein
  - Shear Zone
  - Mafic Dyke
  - Lamprophyre
  - Overburden/Casing
  - Pyritic Mineralization (T3)
  - Fault
  - Shear Zone

- Inferred Resource Blocks**  
 DOES NOT INCLUDE 2012 DRILLING  
 (Stubens and de Ruijter, 2009)
- Au g/t
- 0.50 to 1.00
  - 1.00 to 3.00
  - >= 3.00



**China Minerals Mining Corporation**

Scale 1 : 1000	<b>Cassiar Gold Project</b>  <b>Section 460181E</b> <b>Looking 290°</b> <b>+/-12.5 m</b>
Projection: UTM 9 - NAD83	
Mining District: Liard	
Map Sheet: 104P/05	
Prov/State: BC	
Plot Date: 17-Jan-2013	
Figure: 36	

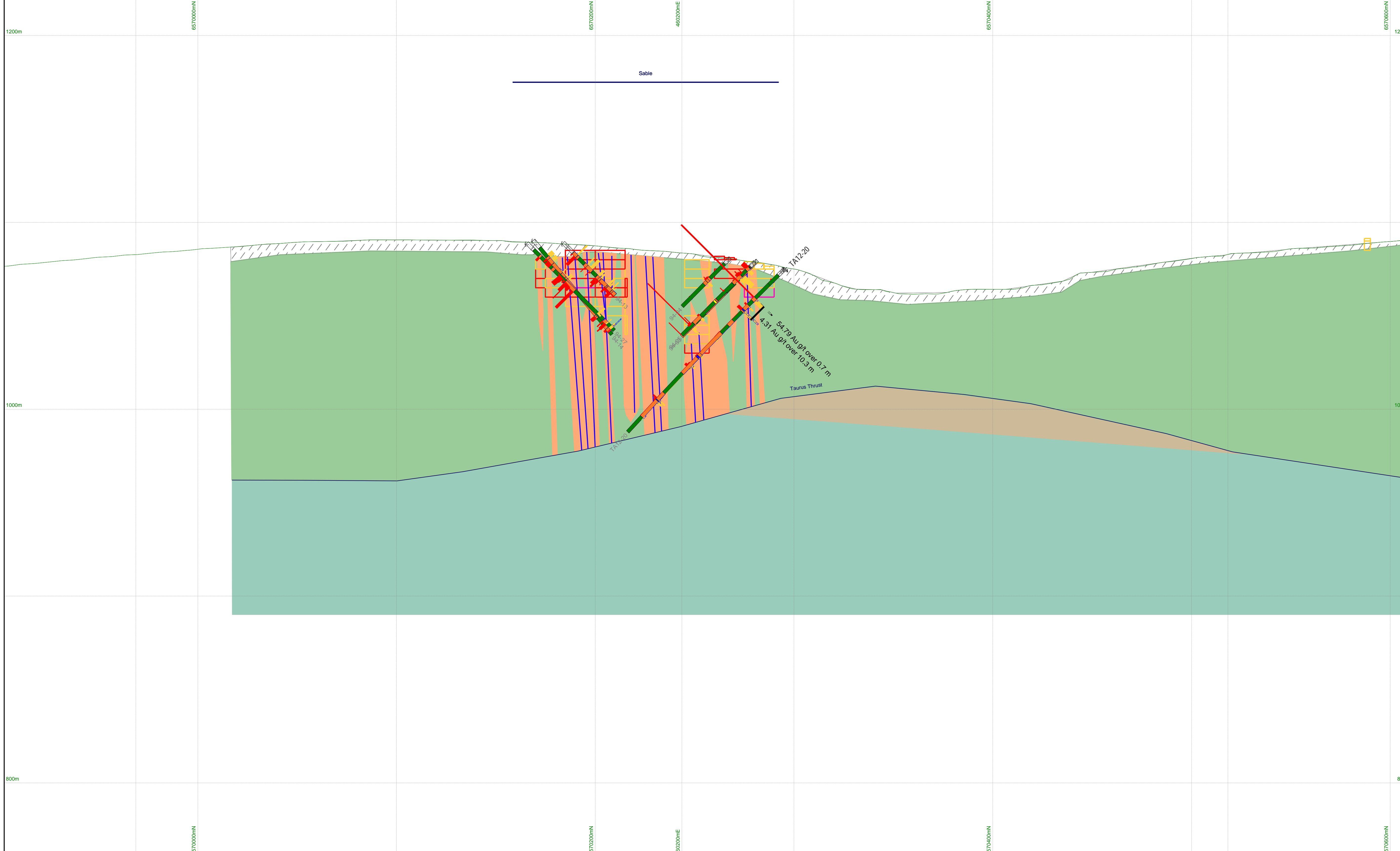


- Interpreted Lithology**
- Basalt (T1)
  - T3
  - Ankerite Altered Basalt (T2)
  - Chert/Argillite
  - Footwall Basalt
  - Mafic Dyke
  - Overburden
  - Faults
  - Thrust Faults
  - Quartz-Ankerite Shear Veins
  - Roads

- 2012 Drill holes**
- Historic Drill holes
  - Au g/t, 1 cm = 10 g/t
  - As ppm, 1 cm = 1000 ppm
  - Pyrite, 1cm = 10% PY

- Downhole and Surface Lithology**
- Basalt (T1)
  - Basalt - magnetite/jasper
  - Basalt - pillowed
  - Mafic Tuff
  - Basalt - AK alt (T2)
  - Chert
  - Chert - brecciated
  - Argillaceous Chert
  - Argillite
  - Mudstone
  - Siltstone
  - Qtz Vein
  - Carbonate Vein
  - Shear Zone
  - Mafic Dyke
  - Lamprophyre
  - Overburden/Casing
  - Pyritic Mineralization (T3)
  - Fault
  - Shear Zone

- Inferred Resource Blocks**  
 DOES NOT INCLUDE 2012 DRILLING  
 (Stubens and de Ruijter, 2009)
- Au g/t
- 0.50 to 1.00
  - 1.00 to 3.00
  - >= 3.00



**China Minerals Mining Corporation**

Scale  
1 : 1000

Projection: UTM 9 - NAD83

Mining District: Liard

Map Sheet: 104P/05

Prov/State: BC

Plot Date: 17-Jan-2013

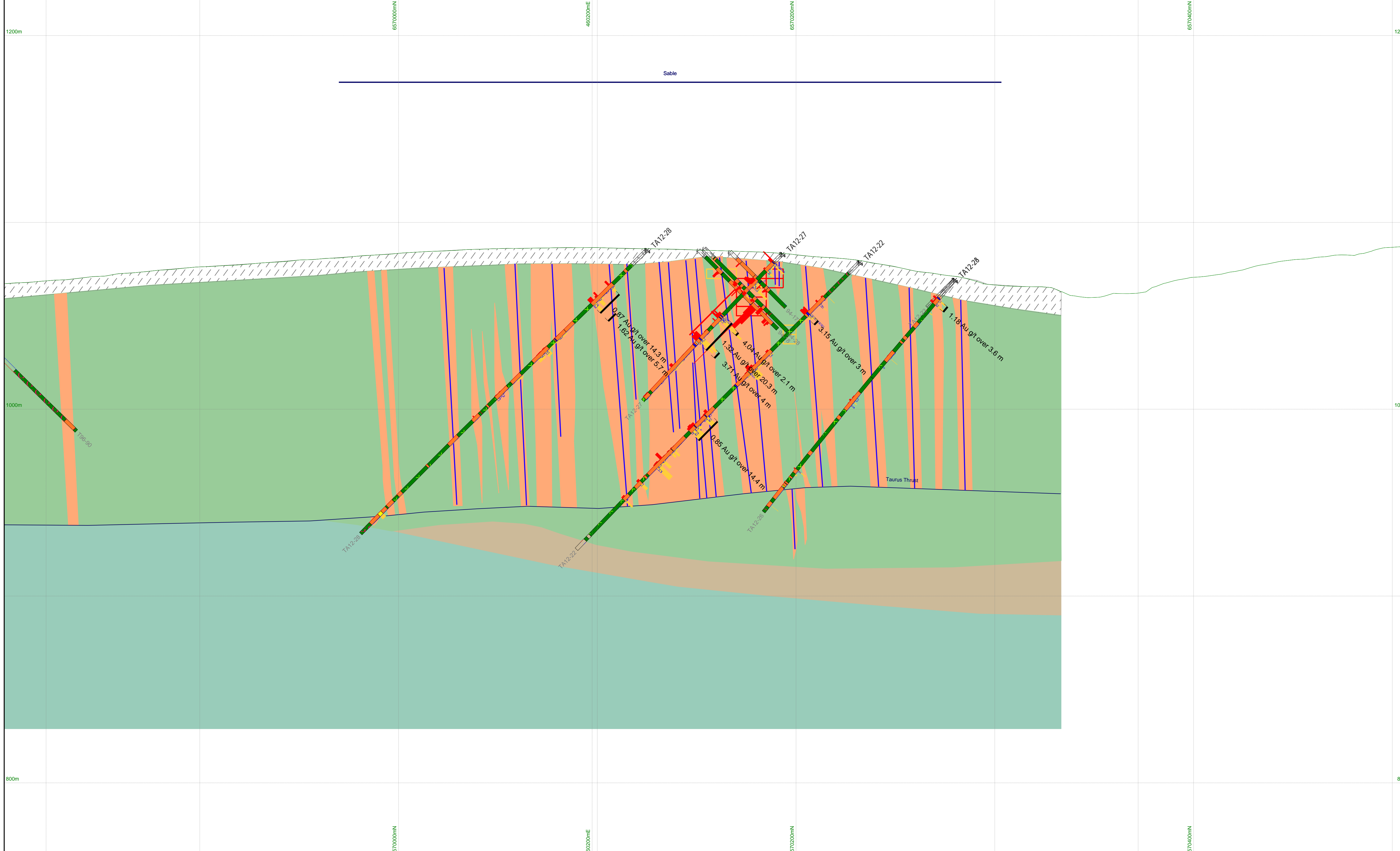
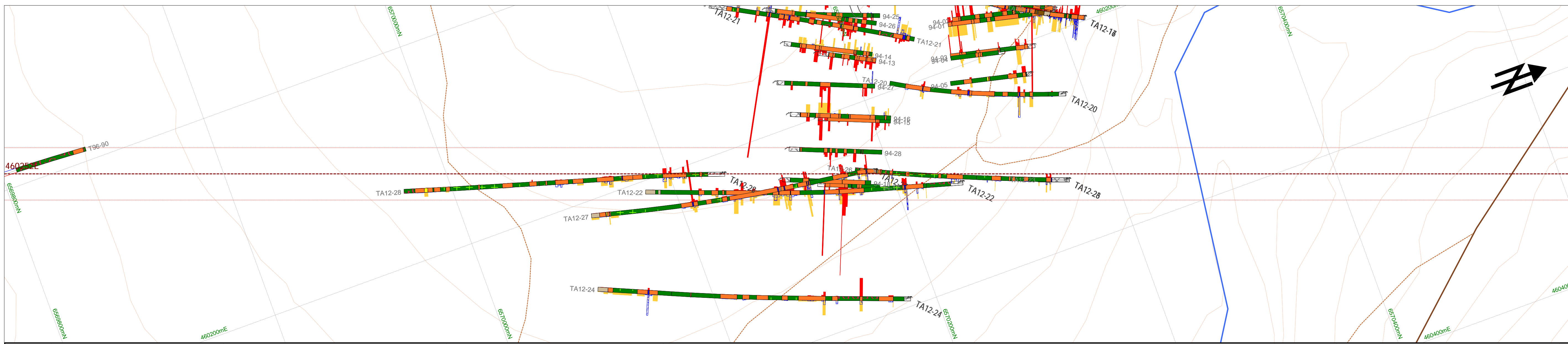
Figure: 37

**Cassiar Gold Project**

**Section 460205E**  
**Looking 290°**  
**+/-12.5 m**

**EQUITY**

20 0 20 40m



- Interpreted Lithology**
- Basalt (T1)
  - T3
  - Ankerite Altered Basalt (T2)
  - Chert/Argillite
  - Footwall Basalt
  - Mafic Dyke
  - Overburden
  - Faults
  - Thrust Faults
  - Quartz-Ankerite Shear Veins
  - Roads

- 2012 Drill holes**
- Historic Drill holes
  - Au g/t, 1 cm = 10 g/t
  - As ppm, 1 cm = 1000 ppm
  - Pyrite, 1cm = 10% PY

- Downhole and Surface Lithology**
- Basalt (T1)
  - Basalt - magnetite/jasper
  - Basalt - pillowed
  - Mafic Tuff
  - Basalt - AK alt (T2)
  - Chert
  - Chert - brecciated
  - Argillaceous Chert
  - Argillite
  - Mudstone
  - Siltstone
  - Qtz Vein
  - Carbonate Vein
  - Shear Zone
  - Mafic Dyke
  - Lamprophyre
  - Overburden/Casing
  - Pyritic Mineralization (T3)
  - Fault
  - Shear Zone

- Inferred Resource Blocks**  
 DOES NOT INCLUDE 2012 DRILLING  
 (Stubens and de Ruijter, 2009)
- Au g/t
- 0.50 to 1.00
  - 1.00 to 3.00
  - >= 3.00

**China Minerals Mining Corporation**

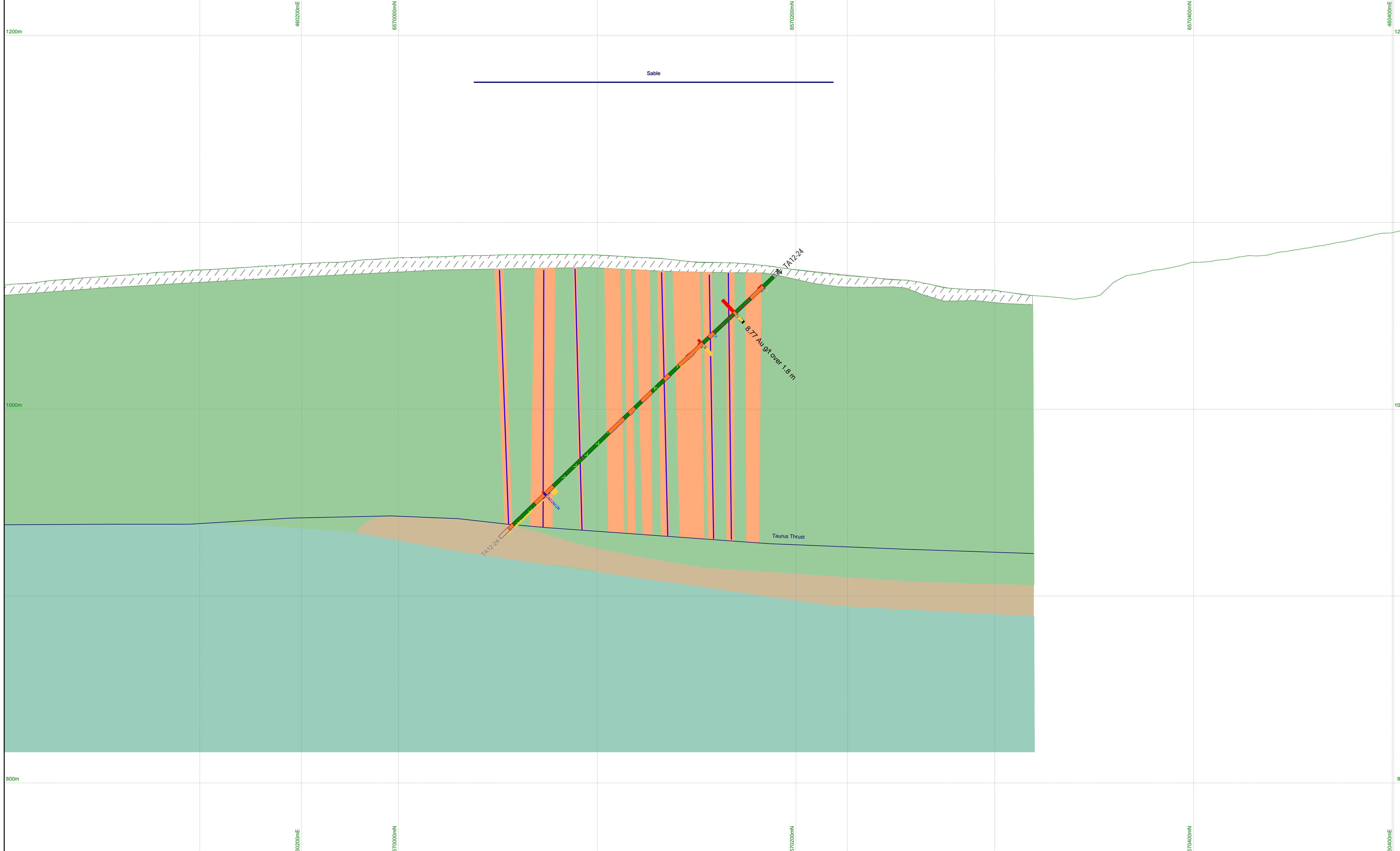
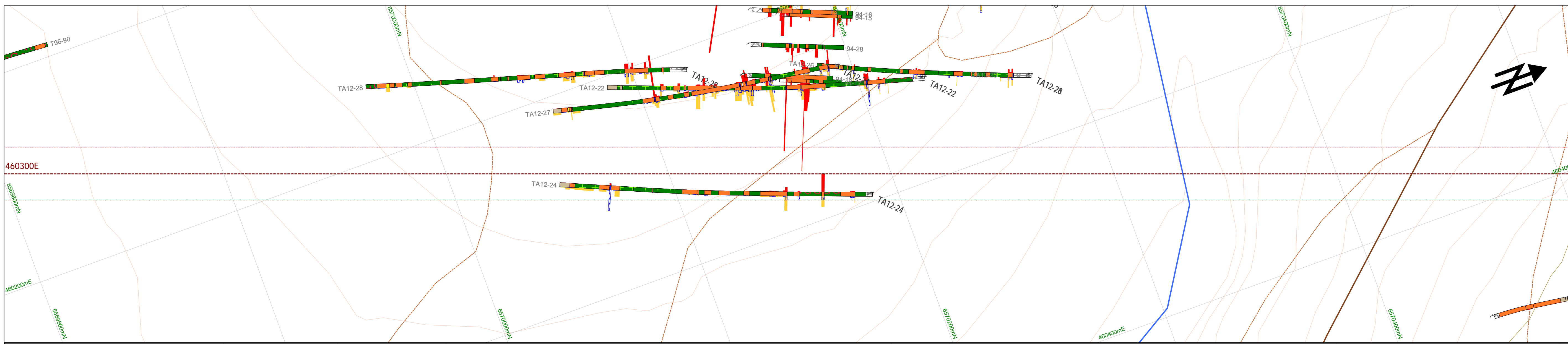
Cassiar Gold Project

**Section 460252E**  
**Looking 290°**  
**+/-12.5 m**

Scale: 1 : 1000  
 Projection: UTM 9 - NAD83  
 Mining District: Liard  
 Map Sheet: 104P/05  
 Prov/State: BC  
 Plot Date: 17-Jan-2013  
 Figure: 38

**EQUITY**

20 0 20 40m



- Interpreted Lithology**
- Basalt (T1)
  - T3
  - Ankerite Altered Basalt (T2)
  - Chert/Argillite
  - Footwall Basalt
  - Mafic Dyke
  - Overburden
  - Faults
  - Thrust Faults
  - Quartz-Ankerite Shear Veins
  - Roads

- 2012 Drill holes**
- Historic Drill holes
  - Au g/t, 1 cm = 10 g/t
  - As ppm, 1 cm = 1000 ppm
  - Pyrite, 1cm = 10% PY

- Downhole and Surface Lithology**
- Basalt (T1)
  - Basalt - magnetite/jasper
  - Basalt - pillowed
  - Mafic Tuff
  - Basalt - AK alt (T2)
  - Chert
  - Chert - brecciated
  - Argillaceous Chert
  - Argillite
  - Mudstone
  - Siltstone
  - Qtz Vein
  - Carbonate Vein
  - Shear Zone
  - Mafic Dyke
  - Lamprophyre
  - Overburden/Casing
  - Pyritic Mineralization (T3)
  - Fault
  - Shear Zone

- Inferred Resource Blocks**  
DOES NOT INCLUDE 2012 DRILLING  
(Stubens and de Ruijter, 2009)
- Au g/t**
- 0.50 to 1.00
  - 1.00 to 3.00
  - >= 3.00

**China Minerals Mining Corporation**

Scale  
1 : 1000

Projection: UTM 9 - NAD83

Mining District: Liard

Map Sheet: 104P/05

Prov/State: BC

Plot Date: 17-Jan-2013

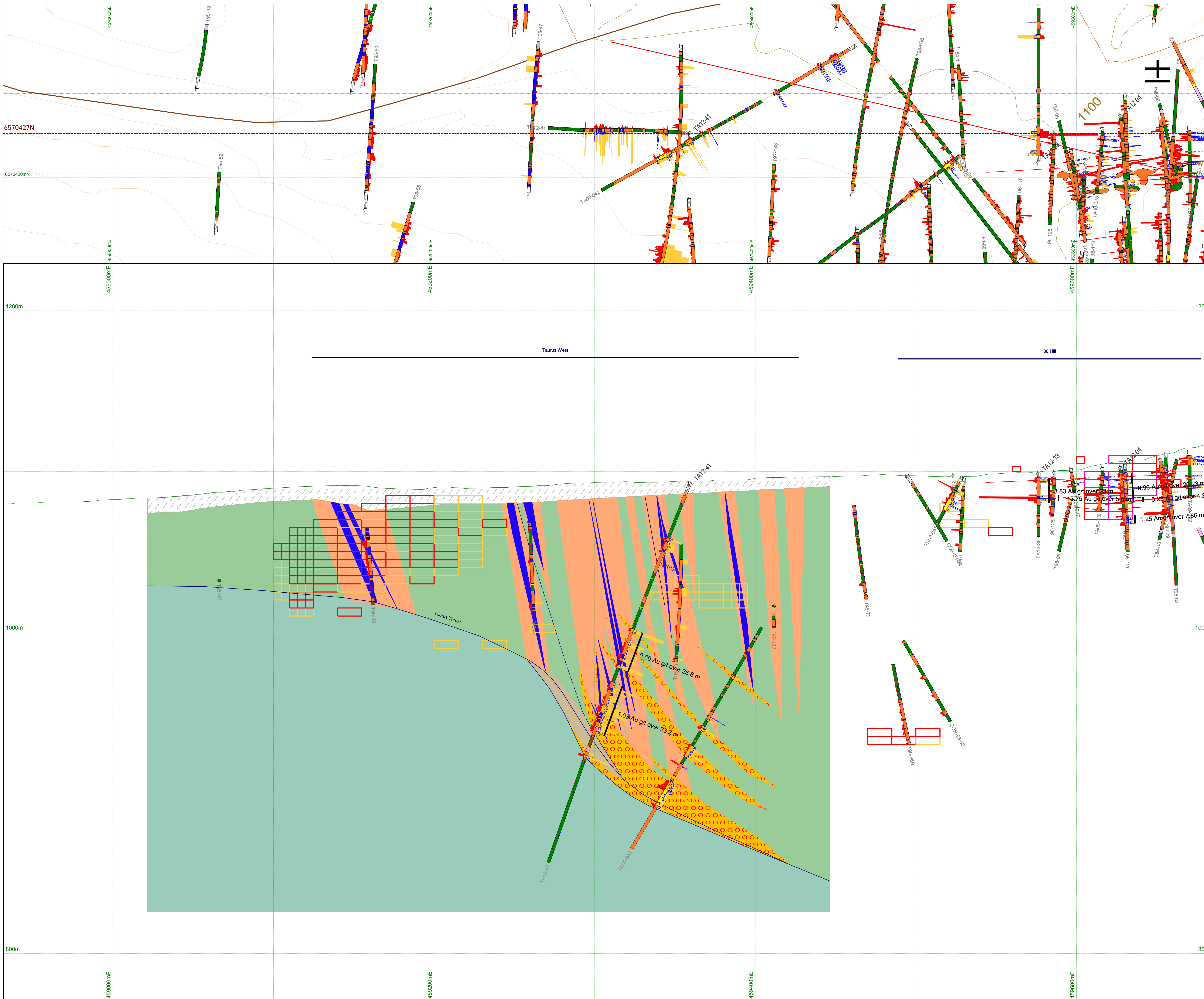
Figure: 39

**Cassiar Gold Project**

**Section 460300E**  
**Looking 290°**  
**+/-12.5 m**

**EQUITY**

20 0 20 40m



**Interpreted Lithology**

- Basalt (T1)
- T3
- Ankerite Altered Basalt (T3)
- Chert/Argillite
- Footwall Basalt
- Mafic Dyke
- Overburden
- Quartz Veins
- Faults
- Thrust Faults
- Quartz-Ankerite Shear Veins
- Roads

**2012 Drill holes**

- Historic Drill holes
- Au g/t, 1 cm = 10 g/t
- As ppm, 1 cm = 1000 ppm
- Pyrite, 1cm = 10% PY

**Downhole and Surface Lithology**

- Basalt (T1)
- Basalt - magnetite/jasper
- Basalt - pillowed
- Mafic Tuff
- Basalt - AK alt (T2)
- Chert
- Chert - brecciated
- Argillaceous Chert
- Argillite
- Mudstone
- Siltstone
- Qtz Vein
- Carbonate Vein
- Shear Zone
- Mafic Dyke
- Lamprophyre
- Overburden/Casing
- Pyritic Mineralization (T3)
- Fault
- Shear Zone

**Inferred Resource Blocks**  
 DOES NOT INCLUDE 2012 DRILLING  
 (Stubens and de Ruijter, 2009)

**Au g/t**

- 0.50 to 1.00
- 1.00 to 3.00
- >= 3.00

**China Minerals Mining Corporation**

Scale  
1 : 1000

Projection: UTM 9 - NAD83

Mining District: Liard

Map Sheet: 104P/05

Prov/State: BC

Plot Date: 17-Jan-2013

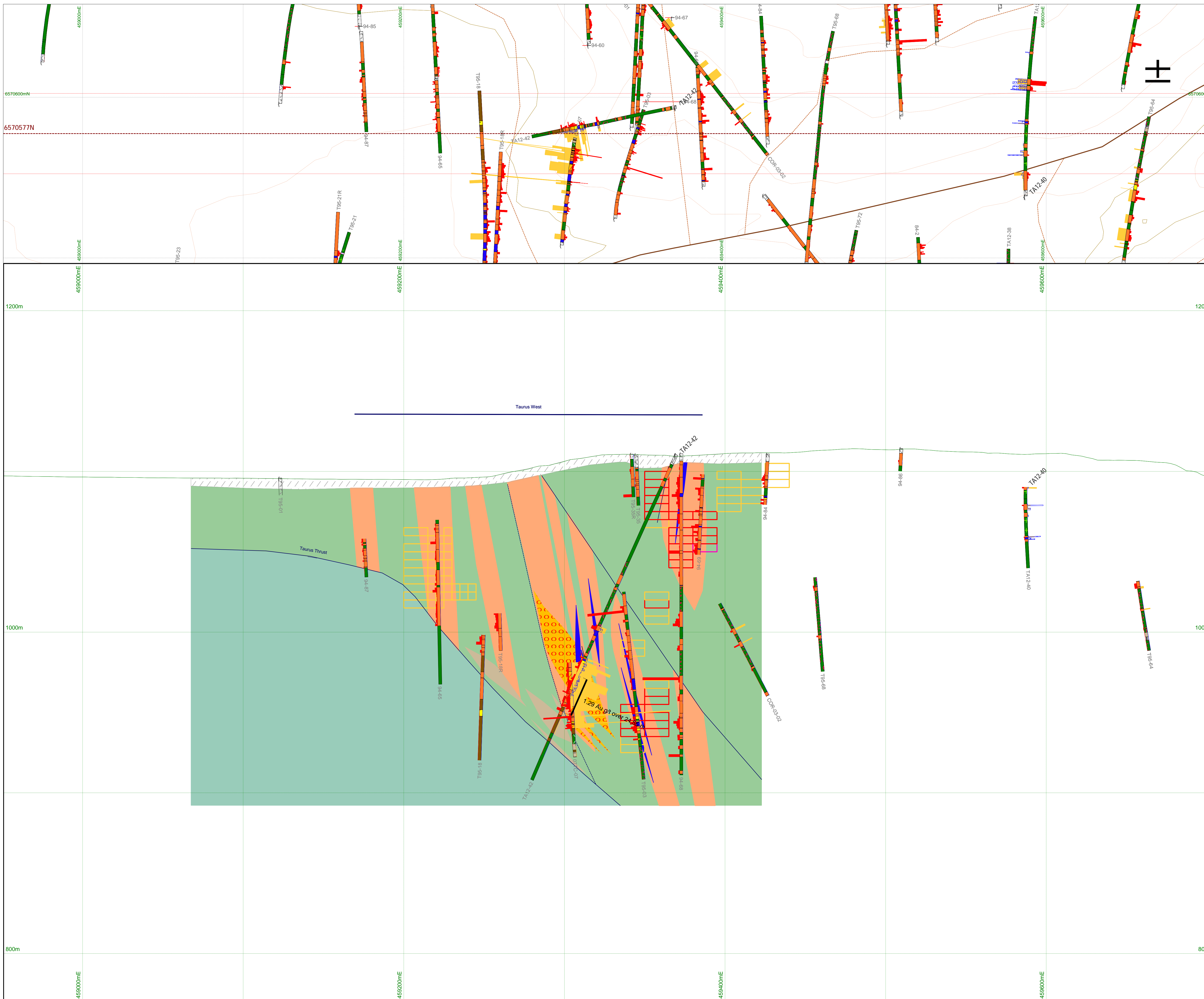
Figure: 40

**Cassiar Gold Project**

**Section 6570427N**  
**Looking North**  
**+/-25 m**

20 0 20 40m

**EQUITY**



- Interpreted Lithology**
- Basalt (T1)
  - T3
  - Ankerite Altered Basalt (T3)
  - Chert/Argillite
  - Footwall Basalt
  - Mafic Dyke
  - Overburden
  - Quartz Veins
  - Faults
  - Thrust Faults
  - Quartz-Ankerite Shear Veins
  - Roads

- 2012 Drill holes**
- Historic Drill holes
  - Au g/t, 1 cm = 10 g/t
  - As ppm, 1 cm = 1000 ppm
  - Pyrite, 1cm = 10% PY

- Downhole and Surface Lithology**
- Basalt (T1)
  - Basalt - magnetite/jasper
  - Basalt - pillowed
  - Mafic Tuff
  - Basalt - AK alt (T2)
  - Chert
  - Chert - brecciated
  - Argillaceous Chert
  - Argillite
  - Mudstone
  - Siltstone
  - Qtz Vein
  - Carbonate Vein
  - Shear Zone
  - Mafic Dyke
  - Lamprophyre
  - Overburden/Casing
  - Pyritic Mineralization (T3)
  - Fault
  - Shear Zone

- Inferred Resource Blocks**  
DOES NOT INCLUDE 2012 DRILLING  
(Stubens and de Ruijter, 2009)
- Au g/t**
- 0.50 to 1.00
  - 1.00 to 3.00
  - >= 3.00

**China Minerals Mining Corporation**

Scale  
1 : 1000

Projection: UTM 9 - NAD83

Mining District: Liard

Map Sheet: 104P/05

Prov/State: BC

Plot Date: 17-Jan-2013

Figure: 41

**Cassiar Gold Project**

**Section 6570577N**  
**Looking North**  
**+/-25 m**

20 0 20 40m

**EQUITY**



- Interpreted Lithology**
- Basalt (T1)
  - T3
  - Ankerite Altered Basalt (T3)
  - Chert/Argillite
  - Footwall Basalt
  - Mafic Dyke
  - Overburden
  - Quartz Veins
  - Faults
  - Thrust Faults
  - Quartz-Ankerite Shear Veins
  - Roads
- 2012 Drill holes**
- Historic Drill holes
  - Au g/t, 1 cm = 10 g/t
  - As ppm, 1 cm = 1000 ppm
  - Pyrite, 1cm = 10% PY

- Downhole and Surface Lithology**
- Basalt (T1)
  - Basalt - magnetite/jasper
  - Basalt - pillowed
  - Mafic Tuff
  - Basalt - AK alt (T2)
  - Chert
  - Chert - brecciated
  - Argillaceous Chert
  - Argillite
  - Mudstone
  - Siltstone
  - Qtz Vein
  - Carbonate Vein
  - Shear Zone
  - Mafic Dyke
  - Lamprophyre
  - Overburden/Casing
  - Pyritic Mineralization (T3)
  - Fault
  - Shear Zone

- Inferred Resource Blocks**  
 DOES NOT INCLUDE 2012 DRILLING  
 (Stubens and de Ruijter, 2009)
- Au g/t
- 0.50 to 1.00
  - 1.00 to 3.00
  - >= 3.00

**China Minerals Mining Corporation**

Cassiar Gold Project

**Section 6570877N**  
**Looking North**  
**+/-25 m**

Scale  
 1 : 1000

Projection: UTM 9 - NAD83

Mining District: Liard

Map Sheet: 104P/05

Prov/State: BC

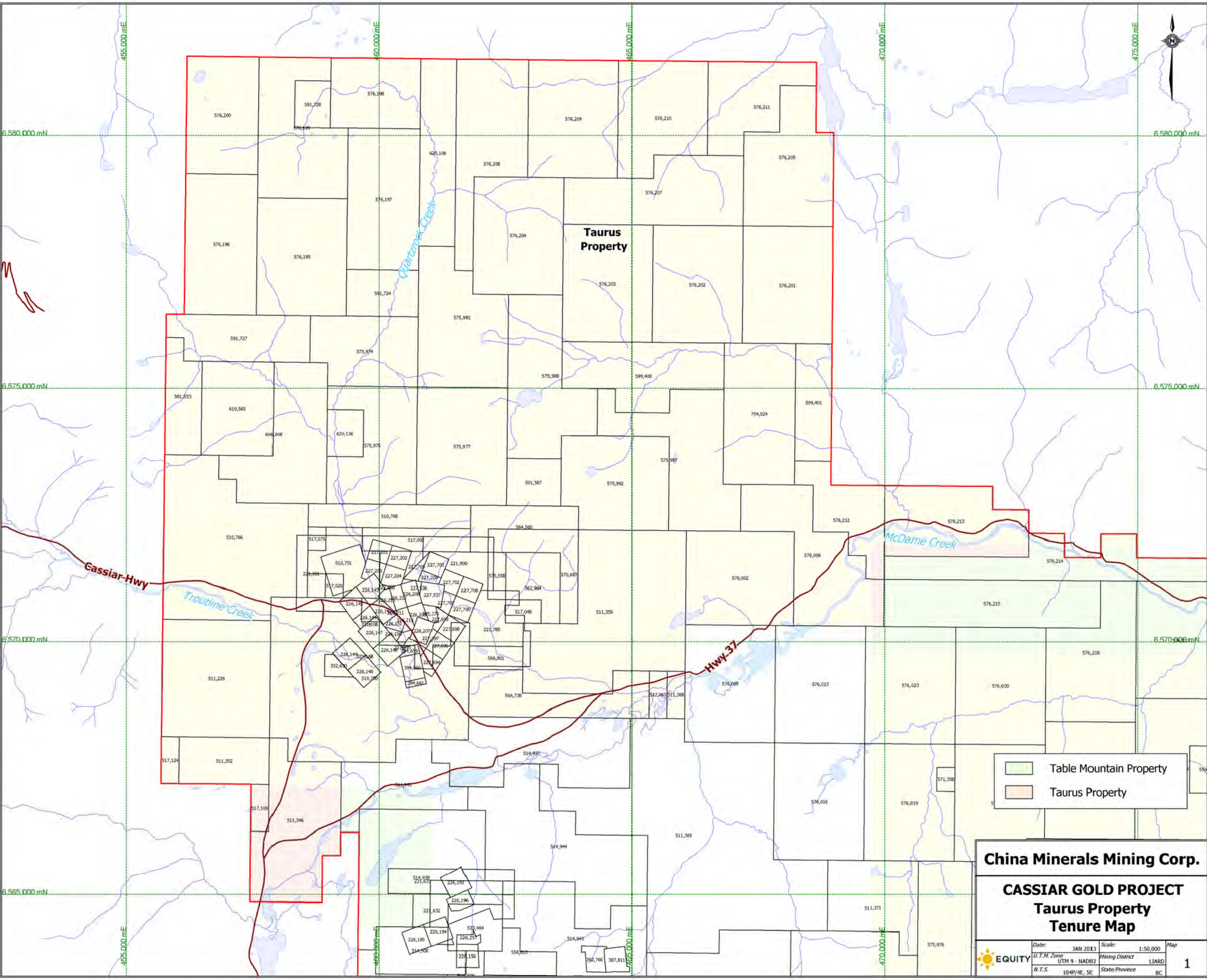
Plot Date: 17-Jan-2013

Figure: 42

**EQUITY**

20 0 20 40m



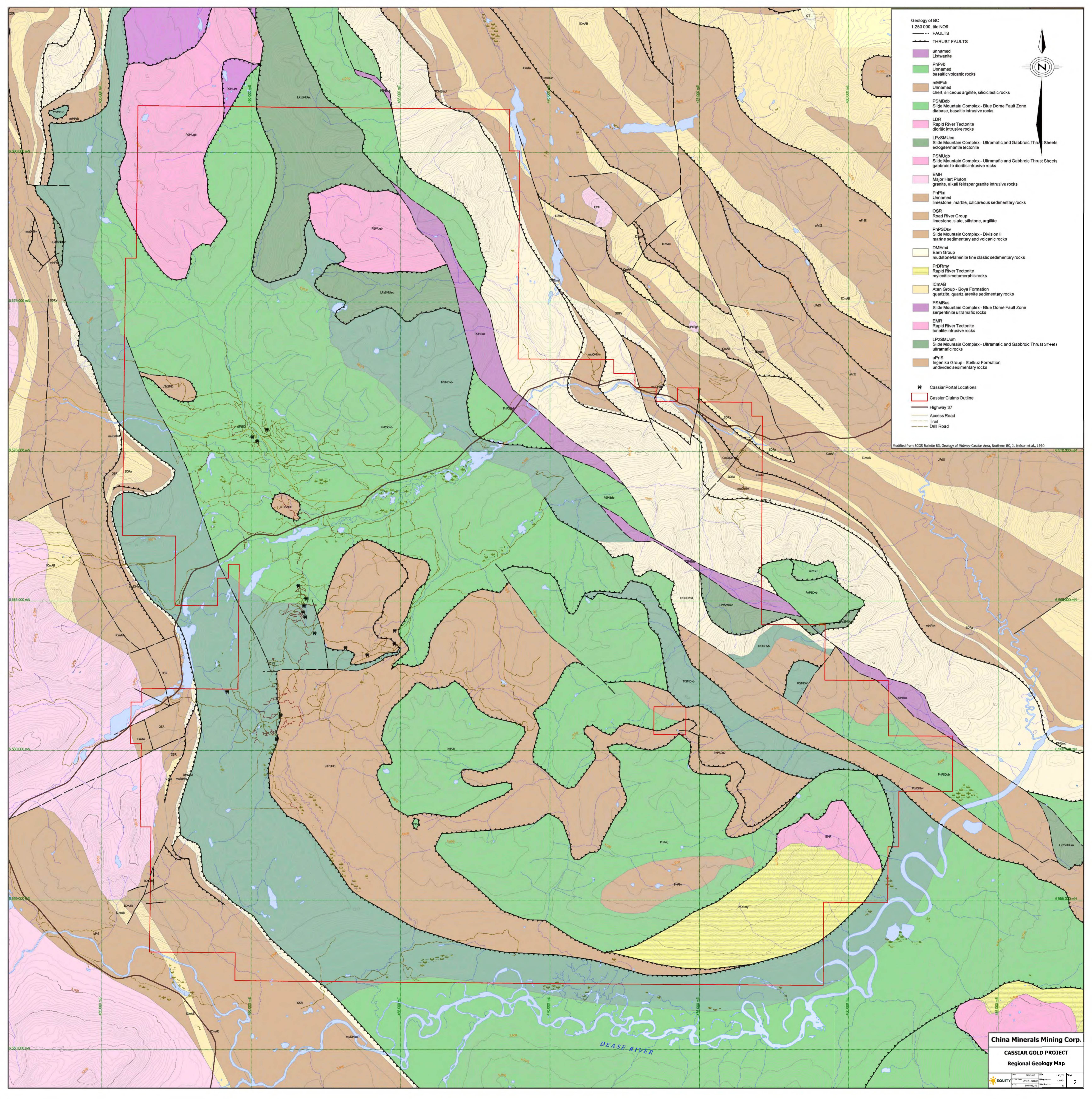


**Taurus Property**

- Table Mountain Property
- Taurus Property

**China Minerals Mining Corp.**  
**CASSIAR GOLD PROJECT**  
**Taurus Property**  
**Tenure Map**

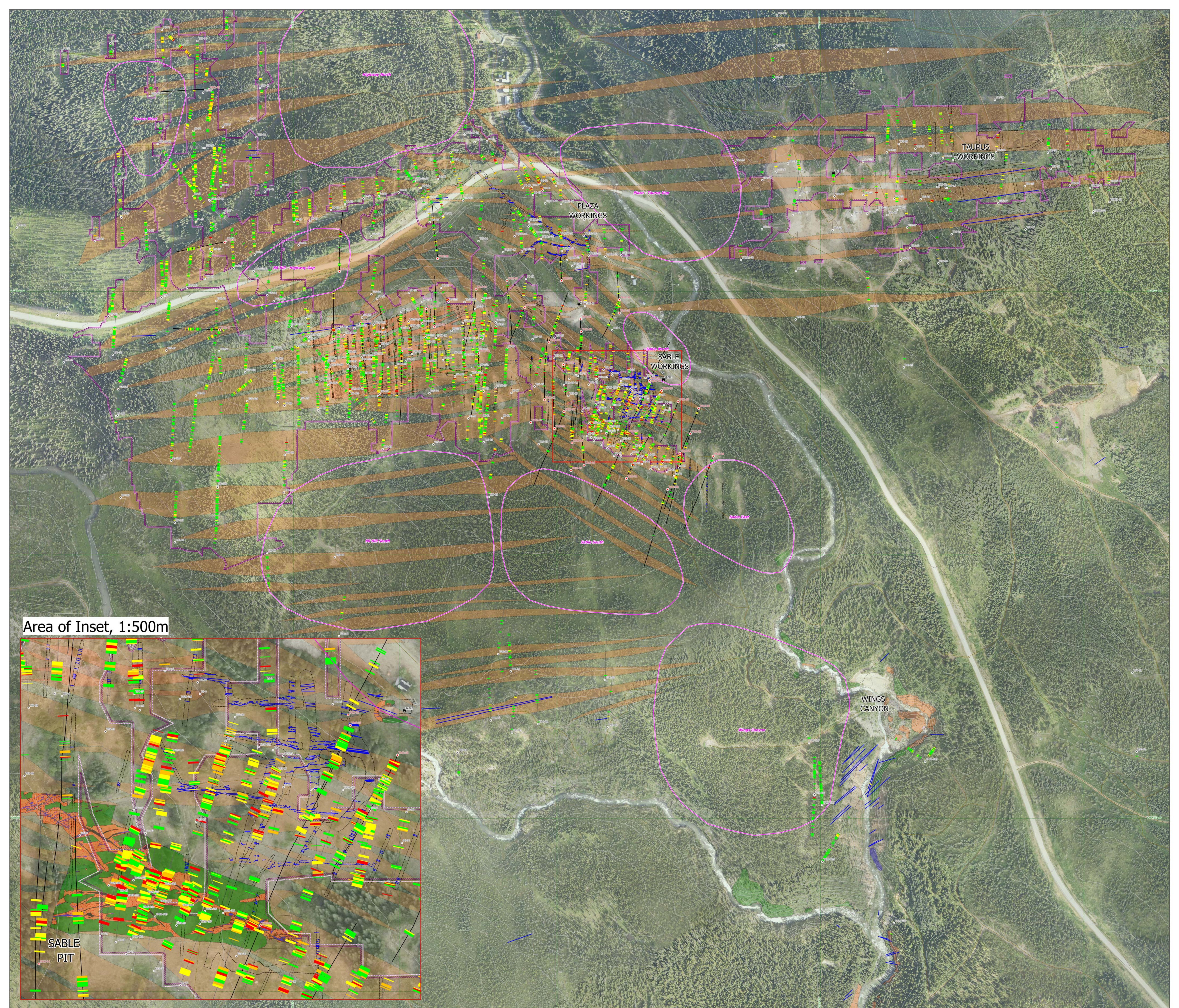
	Date:	JAN 2013	Scale:	1:50,000	Map
	U.T.M. Zone	UTM 9 - NAD83	Mining District	LIARD	<b>1</b>
	N.T.S.	104P/4E, SE	State/Province	BC	



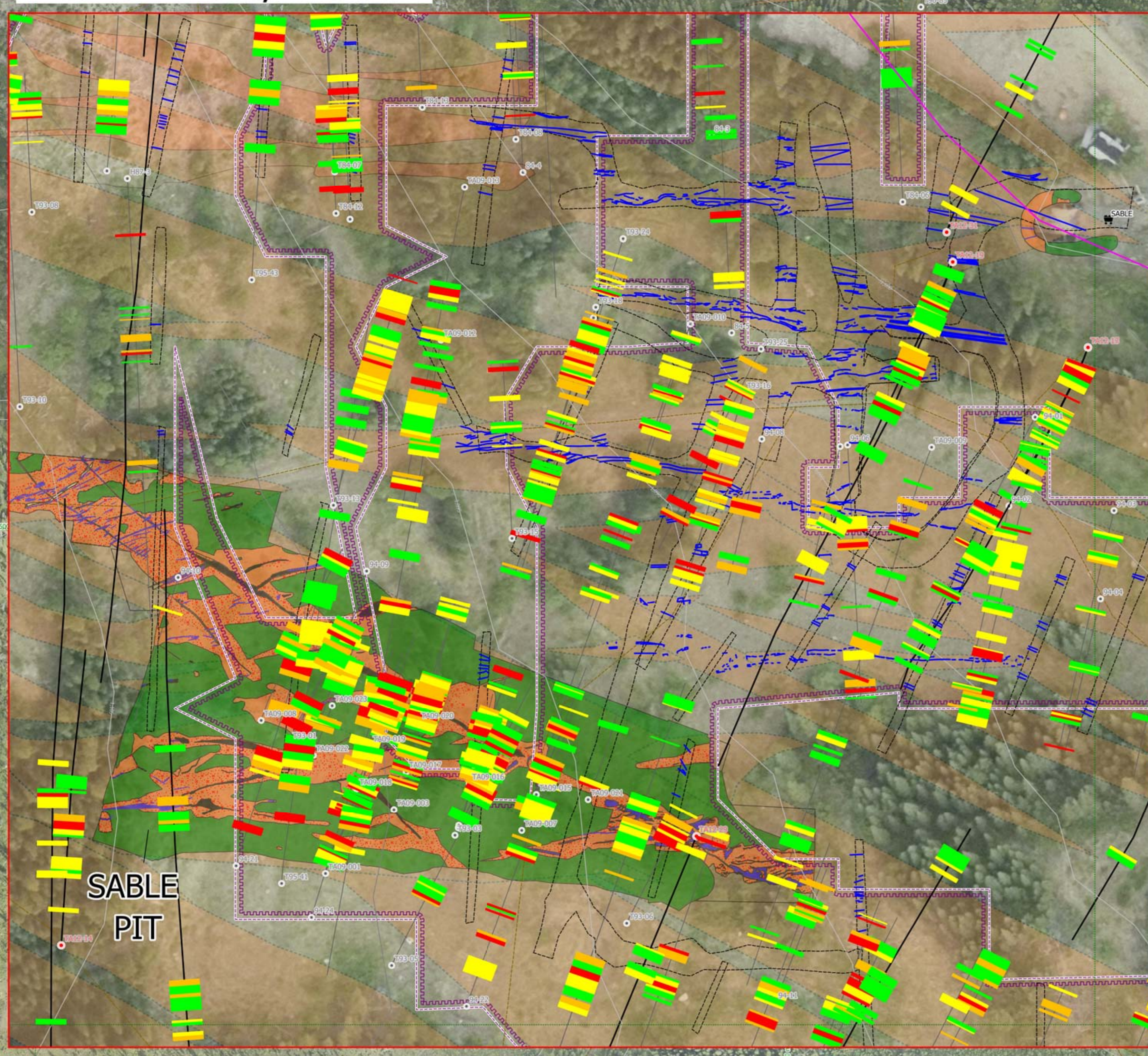
- Geology of BC  
1:250 000, tile NO9
- FAULTS
- THRUST FAULTS
- unnamd
  - Listwanite
  - PnPv0
  - Unnamd
  - Unnamd
  - basaltic volcanic rocks
  - mMPch
  - Unnamd
  - chert, siliceous argillite, siliceous rocks
  - PSMBdb
  - Slide Mountain Complex - Blue Dome Fault Zone
  - diabase, basaltic intrusive rocks
  - LDR
  - Rapid River Tectonite
  - dioritic intrusive rocks
  - LPzSMUec
  - Slide Mountain Complex - Ultramafic and Gabbroic Thrust Sheets
  - eclogite/mantle tectonite
  - PSMUgb
  - Slide Mountain Complex - Ultramafic and Gabbroic Thrust Sheets
  - gabbroic to dioritic intrusive rocks
  - EMH
  - Major Hart Pluton
  - granite, alkali feldspar granite intrusive rocks
  - PnPim
  - Unnamd
  - limestone, marble, calcareous sedimentary rocks
  - OSR
  - Road River Group
  - limestone, slate, siltstone, argillite
  - PnPSDav
  - Slide Mountain Complex - Division II
  - marine sedimentary and volcanic rocks
  - DMEmd
  - Earn Group
  - mudstone/laminite fine clastic sedimentary rocks
  - PrDRmy
  - Rapid River Tectonite
  - mylonitic metamorphic rocks
  - ICmAB
  - Atan Group - Boya Formation
  - quartzite, quartz arenite sedimentary rocks
  - PSMbus
  - Slide Mountain Complex - Blue Dome Fault Zone
  - serpentine ultramafic rocks
  - EMR
  - Rapid River Tectonite
  - tonalite intrusive rocks
  - LPzSMUum
  - Slide Mountain Complex - Ultramafic and Gabbroic Thrust Sheets
  - ultramafic rocks
  - uPrIS
  - Ingenika Group - Steikuz Formation
  - undivided sedimentary rocks
- Cassiar Portal Locations  
 Cassiar Claims Outline  
 Highway 37  
 Access Road  
 Trail  
 Drill Road



Modified from BCOS Bulletin 83, Geology of Midway-Cassiar Area, Northern BC, J.L. Nelson et al., 1990



Area of Inset, 1:500m



200 meters

Outcrop Legend (Compiled from numerous sources)		Trenches and Underground Workings	
T1: Basalt	S10: Argillite	○	○
T2: Basalt Altered	S11: Limestone	○	○
S8: Chert	8: Diorite	○	○
S10: Siltstone	7: Lavaflow	○	○
S11: Sandstone	T3: Quartz Vein	○	○
	C1: Carbonate Vein	○	○
	S12: Mafic Dyke	○	○
	T11: Lamprophyre	○	○
	OVB: Overburden	○	○
	SHZ: Shear Zone	○	○
	D: Disseminated Pyrite	○	○
	Hoy 37 Road	○	○
	Trail	○	○
	Vein	○	○
	2012 Drill Collar	○	○
	Historical Drill Collar	○	○
	Pit	○	○
	Surface Projection of Taurus Gold Deposit Resources (±0.5g/t)	○	○
	Interpreted Anticline	○	○
	Alteration Corridors	○	○
	2013 Target Areas	○	○