



Ministry of Energy & Mines
 Energy & Minerals Division
 Geological Survey Branch

ASSESSMENT REPORT
 TITLE PAGE AND SUMMARY

TITLE OF REPORT (type of survey(s)) Related Technical (sampling/assaying) TOTAL COST \$3,974.20

AUTHOR(S) Donald Bunce SIGNATURE(S) [Signature]

NOTICE OF WORK PERMIT NUMBER(S)/DATE(S) MX-1-817-2010/Jan/11 to 2013/Nov/30 YEAR OF WORK 2012
 STATEMENT OF WORK - CASH PAYMENT EVENT NUMBER(S)/DATE(S)

PROPERTY NAME Jade Fever

CLAIM NAME(S) (on which work was done)
Jade Fever #4 Tenure #666783

COMMODITIES SOUGHT Jade (Nephrite)

MINERAL INVENTORY MINFILE NUMBER(S), IF KNOWN

MINING DIVISION Liard NTS 104 J080

LATITUDE 58 ° 45 . 42 . LONGITUDE 130 ° 03 . 19 " (at centre of work)

OWNER(S)
 1) Donald Bunce 2) Robin Bunce

MAILING ADDRESS
21670 Chief Lake Rd. P.O. Box BB
Prince George, B.C., V2K-5K5 Jade City, B.C., V0C-1E0

OPERATOR(S) (who paid for the work)
 1) Donald Bunce 2) Robin Bunce

MAILING ADDRESS
21670 Chief Lake Rd. P.O. Box BB
Prince George, B.C., V2K-5K5 Jade City, B.C., V0C-1E0

PROPERTY GEOLOGY KEYWORDS (lithology, age, stratigraphy, structure, alteration, mineralization, size and altitude):
Triassic, Intrusive, Ultramafics, Nephrite

REFERENCES TO PREVIOUS ASSESSMENT WORK AND ASSESSMENT REPORT NUMBERS
Event Numbers; #5079453, #5087567

TYPE OF WORK IN THIS REPORT	EXTENT OF WORK (IN METRIC UNITS)	ON WHICH CLAIMS	PROJECT COSTS APPORTIONED (incl. support)
GEOLOGICAL (scale, area)			
Ground, mapping			
Photo interpretation			
GEOPHYSICAL (line-kilometres)			
Ground			
Magnetic			
Electromagnetic			
Induced Polarization			
Radiometric			
Seismic			
Other			
Airborne			
GEOCHEMICAL (number of samples analysed for ...)			
Soil			
Silt			
Rock			
Other			
DRILLING (total metres; number of holes, size)			
Core			
Non-core			
RELATED TECHNICAL			
Sampling/assaying	10 samples in 26.5 m of Trench	Jade Fever*4 Tenure # 666 783	\$503.85
Petrographic			
Mineralographic			
Metallurgic			
PROSPECTING (scale, area)			
PREPARATORY/PHYSICAL			
Line/grid (kilometres)			
Topographic/Photogrammetric (scale, area)			
Legal surveys (scale, area)			
Road, local access (kilometres)/trail	0.29 km	Tenure # 666 783	\$1360.94
Trench (metres)	26.5 meters	Tenure # 666 783	\$547.04
Underground dev. (metres)			
Other	Food & Lodging Transportation	Tenure # 666 783 Tenure # 666 783	\$900.00 \$662.37
TOTAL COST			\$3,974.20

Statement of Exploration and Development

2012

Jade Fever 4 Claim

Liard Mining Division Map sheet 104J080

58° 45' 42" N
130° 03' 19" W

BC Geological Survey
Assessment Report
33513

For

Donald Bunce
21670 Chief Lake Road
Prince George, B.C.
V2K - 5K5

By

Donald Bunce
21670 Chief Lake Road
Prince George, B.C.
V2K - 5K5

Operator

Donald Bunce

Date Submitted

Dec. 17, 2012

**GEOLOGICAL SURVEY BRANCH
ASSESSMENT REPORT**

33,513

Statement of Exploration and Development

Table of Contents

Index	2
2012 Exploration Program	3
Objective and Results	3
Property Description	5
Access to work site	5
Assay Results	6
Statement of costs	25
Author's Qualifications	26
Map # 1 of British Columbia	27
Map # 2 showing the nearest town	28
Map # 3 showing access to work site	29
Map # 4 showing work sites relative to claim boundaries	30
Pictures of Exploration trenches	31

Statement of Exploration and Development

2012 Exploration Program

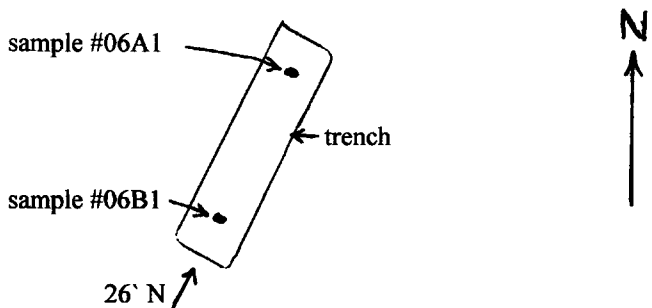
During the period of Jun/29/2012 to Aug/20/2012, a rock sampling / assaying of 4 trenches, and the construction of the exploration trail was under taken on the Jade Fever 4 claim.

Objective and Results

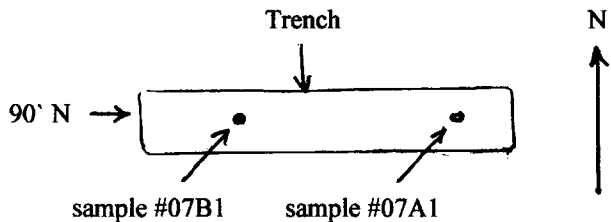
The objective of the trenching program was to determine where the contact zone, between the Intrusive (serpentinite) rocks and the Meta sedimentary (chert) rocks. Looking for in - situ deposits of nephrite jade.

Results indicate that :

In trench TR06/12 the top 60 cm. is dirt and gravel. The bottom 60 cm. is chert that is badly broken up. There were two rock samples taken, # 06A1 and #06B1

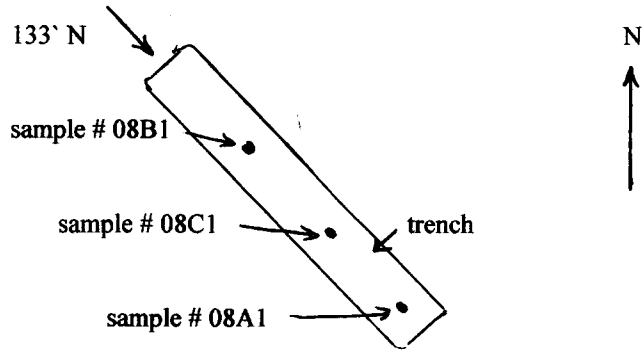


In trench TR07/21 the top 62 cm. is sand and gravel, the bottom 8 cm. is unbroken chert. There were two rock samples taken, #07A1 and #07B1.

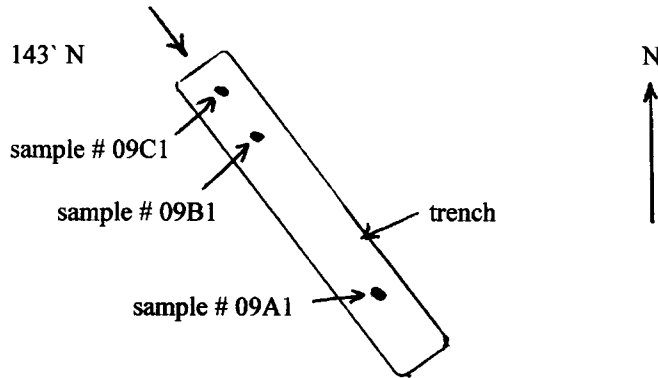


Statement of Exploration and Development

In trench TR08/12 the top 30 cm. is a sandy gravel, the bottom 70 cm. is clay and cherty slate rocks with sharp corners. There were three rock samples taken, #08A1, #08B1 and #08C1.



In trench TR09/12 from the top to the bottom is a sandy gravel, that consisted of small flat cherty slate rocks. There were three rock samples taken, #09A1, #09B1 and #09C1.



Recommendations

In the summer of 2013, we intend to do more exploration work in the area north and north-east of TR09/12.

Statement of Exploration and Development

Property Description

Area is situated on the divide between the Omineca Belt to the north east, and the Inter - montane Belt to the south west. Rocks of the Cache Creek Complex (Mississippian to Triassic age) are on both sides of the divide. There are Intrusive rock formations scattered through out the immediate area, on both sides of the divide between the Omineca Belt and the Intermontane Belt. The age of the Intrusive rocks are unknown.

Access to work site

Access to the site is via Highway 37 at 528.5 km. which is 1 km. south of the Sawmill Point camp grounds on the north east side of Diese Lake.

Assay Results

There were 10 samples taken, they are #06A1, #06B1, #07A1, #07B1, #08A1, 08B1, #08C1, #09A1, #09B1 and #09C1. The results are found on pages 6 through 24.



Acme Analytical Laboratories (Vancouver) Ltd.
1020 Cordova St. East Vancouver BC V6A 4A3 Canada

www.acmelab.com

Client: **Donald Bunce**
21670 Chief Lake Rd.
Prince George BC V2K 5K5 Canada

Submitted By: Donald Bunce
Receiving Lab: Canada-Smithers
Received: August 02, 2012
Report Date: September 13, 2012
Page: 1 of 2

CERTIFICATE OF ANALYSIS

SMI12000169.1

CLIENT JOB INFORMATION

Project: Jade Fever
Shipment ID:
P.O. Number
Number of Samples: 7

SAMPLE DISPOSAL

DISP-PLP Dispose of Pulp After 90 days
DISP-RJT Dispose of Reject After 90 days

SAMPLE PREPARATION AND ANALYTICAL PROCEDURES

Method Code	Number of Samples	Code Description	Test Wgt (g)	Report Status	Lab
R200-250	7	Crush, split and pulverize 250 g rock to 200 mesh			SMI
1F05	6	1:1:1 Aqua Regia digestion Ultratrace ICP-MS analysis	15	Completed	VAN
Split Dry 105	1				VAN
Split Dry LOI	1				VAN
Dry at 105C	1	Dry pulps @ 105 Deg. prior to analysis			VAN
4A	1	LIBO2/LI2B4O7 fusion ICP-ES analysis	0.1	Completed	VAN
7TD	1	Cu Ni Co by 4 Acid digestion, analysis by ICP-ES	0.5	Completed	VAN
LOI	1	Loss by loss on ignition		Completed	VAN

ADDITIONAL COMMENTS

Acme does not accept responsibility for samples left at the laboratory after 90 days without prior written instructions for sample storage or return.

Invoice To: Donald Bunce
21670 Chief Lake Rd.
Prince George BC V2K 5K5
Canada

CC:



This report supersedes all previous preliminary and final reports with this file number dated prior to the date on this certificate. Signature indicates final approval; preliminary reports are unsigned and should be used for reference only. All results are considered the confidential property of the client. Acme assumes the liabilities for actual cost of analysis only. Results apply to samples as submitted. *** asterisk indicates that an analytical result could not be provided due to unusually high levels of interference from other elements.



Acme Analytical Laboratories (Vancouver) Ltd.
 1020 Cordova St. East Vancouver BC V6A 4A3 Canada
 Phone (604) 253-3158 Fax (604) 253-1716

www.acmelab.com

Client: **Donald Bunce**
 21870 Chief Lake Rd.
 Prince George BC V2K 5K5 Canada

Project: **Jade Fever**
 Report Date: **September 13, 2012**

Page: 2 of 2

Part: 1 of 4

CERTIFICATE OF ANALYSIS

SMI12000169.1

Method	WGHT	1F15	1F15	1F15	1F15	1F15	1F15	1F15	1F15	1F15	1F15	1F15	1F15	1F15	1F15	1F15	1F15	1F15	1F15	1F15	1F15
Analyte	Wgt	Mo	Cu	Pb	Zn	Ag	Ni	Co	Mn	Fe	As	U	Au	Th	Sr	Cd	Sb	Bi	V	Ca	
Unit	kg	ppm	ppm	ppm	ppm	ppb	ppm	ppm	ppm	%	ppm	ppm	ppb	ppm	ppm	ppm	ppm	ppm	ppm	%	
MDL	0.01	0.01	0.01	0.01	0.1	2	0.1	0.1	1	0.01	0.1	0.1	0.2	0.1	0.5	0.01	0.02	0.02	2	0.01	
G1-SMI	Prep Blank	<0.01	0.11	1.88	11.02	50.6	40	2.8	3.9	547	1.76	<0.1	1.2	<0.2	4.3	52.1	0.05	<0.02	0.10	32	0.45
06A1	Rock	0.34	0.20	31.09	11.30	47.3	76	20.4	11.0	492	2.19	2.2	0.4	3.0	1.7	84.6	0.20	0.11	0.05	70	1.95
06B1	Rock	0.23	0.17	20.44	9.78	60.8	64	10.5	9.3	508	2.38	1.4	0.4	6.2	1.8	91.1	0.10	0.08	0.03	58	1.65
07A1	Rock	0.24	0.34	33.30	9.59	61.6	100	18.8	12.6	596	2.55	3.2	0.3	0.6	1.0	131.5	0.20	0.09	0.04	87	2.20
07B1	Rock	0.19	0.14	17.87	8.81	66.0	38	10.3	11.3	715	3.83	1.9	0.4	<0.2	1.4	369.1	0.07	0.08	<0.02	104	4.25
08A1	Rock	0.54	0.18	25.16	11.71	61.1	80	21.7	10.6	599	2.79	2.4	0.4	0.4	2.2	106.4	0.10	0.26	0.04	81	2.18
08B1	Rock	0.52	0.72	41.31	9.20	54.9	118	29.7	15.3	595	2.76	1.8	0.3	<0.2	1.2	95.8	0.16	0.17	0.03	74	1.99
08C1	Rock	0.34	N.A.	N.A.	N.A.	N.A.	N.A.	N.A.	N.A.	N.A.	N.A.	N.A.	N.A.	N.A.	N.A.	N.A.	N.A.	N.A.	N.A.	N.A.	N.A.

This report supersedes all previous preliminary and final reports with this file number dated prior to the date on this certificate. Signature indicates final approval; preliminary reports are unsigned and should be used for reference only.



Acme Analytical Laboratories (Vancouver) Ltd.

1020 Cordova St. East Vancouver BC V6A 4A3 Canada

Phone (604) 253-3158 Fax (604) 253-1716

www.acmelab.com

Client: **Donald Bunce**
21670 Chief Lake Rd.
Prince George BC V2K 5K5 Canada

Project: **Jade Fever**
Report Date: **September 13, 2012**

Page: **2 of 2**

Part: **2 of 4**

CERTIFICATE OF ANALYSIS

SMI12000169.1

Method	1F15	1F15	1F15	1F15	1F15	1F15	1F15	1F15	1F15	1F15	1F15	1F15	1F15	1F15	1F15	1F15	1F15	1F15	1F15	1F15	
Analyte	P	La	Cr	Mg	Ba	Tl	B	Al	Na	K	W	Sc	Ti	S	Hg	Se	Te	Ga	Cu	Ge	
Unit	%	ppm	ppm	%	ppm	%	ppm	%	%	%	ppm	ppm	ppm	%	ppb	ppm	ppm	ppm	ppm	ppm	
MDL	0.001	0.5	0.5	0.01	0.5	0.001	1	0.01	0.001	0.01	0.1	0.1	0.02	0.02	5	0.1	0.02	0.1	0.02	0.1	
G1-SMI	Prep Blank	0.069	10.5	9.6	0.49	156.2	0.093	<1	0.90	0.108	0.50	<0.1	2.1	0.33	<0.02	<5	<0.1	<0.02	6.0	3.02	<0.1
06A1	Rock	0.093	7.7	32.0	0.74	186.0	0.144	5	2.33	0.075	0.39	0.2	6.0	0.06	<0.02	10	<0.1	<0.02	7.3	0.42	<0.1
06B1	Rock	0.099	7.7	17.6	0.57	383.9	0.138	5	1.79	0.098	0.44	0.3	5.2	0.07	<0.02	12	<0.1	<0.02	7.1	1.80	<0.1
07A1	Rock	0.083	5.1	31.3	0.72	383.7	0.160	5	2.24	0.107	0.32	0.2	5.2	0.05	0.03	10	<0.1	<0.02	7.4	0.87	<0.1
07B1	Rock	0.082	7.5	25.9	1.27	121.6	0.226	4	2.98	0.075	0.17	0.5	8.7	0.03	<0.02	8	<0.1	<0.02	12.0	0.46	0.1
08A1	Rock	0.108	10.8	27.3	0.85	184.4	0.167	5	2.43	0.113	0.22	0.3	6.3	0.03	<0.02	9	<0.1	<0.02	9.9	0.56	<0.1
08B1	Rock	0.100	5.9	36.4	0.90	362.0	0.152	3	2.25	0.063	0.22	0.2	4.4	0.05	0.03	24	0.1	0.05	7.3	0.22	<0.1
08C1	Rock	N.A.	N.A.	N.A.	N.A.	N.A.	N.A.	N.A.	N.A.	N.A.	N.A.	N.A.	N.A.	N.A.	N.A.	N.A.	N.A.	N.A.	N.A.	N.A.	N.A.

This report supersedes all previous preliminary and final reports with this file number dated prior to the date on this certificate. Signature indicates final approval; preliminary reports are unsigned and should be used for reference only.



Acme Analytical Laboratories (Vancouver) Ltd.
 1020 Cordova St. East Vancouver BC V6A 4A3 Canada
 Phone (604) 253-3158 Fax (604) 253-1716

www.acmelab.com

Client: **Donald Bunce**
 21670 Chief Lake Rd.
 Prince George BC V2K 5K5 Canada

Project: **Jade Fever**
 Report Date: **September 13, 2012**

Page: 2 of 2

Part: 3 of 4

CERTIFICATE OF ANALYSIS

SMI12000169.1

Method	1F15	1F15	1F15	1F15	1F15	1F15	1F15	1F15	1F15	1F15	1F15	1F15	1F15	1F15	4A	4A	4A	4A	4A	4A	
Analyte	Hf	Nb	Rb	Sn	Ta	Zr	Y	Ce	In	Re	Be	Li	Pd	Pt	SiO2	Al2O3	Fe2O3	MgO	CaO	Na2O	
Unit	ppm	ppm	ppm	ppm	ppm	ppm	ppm	ppm	ppm	ppb	ppm	ppm	ppb	ppb	%	%	%	%	%	%	
MDL	0.02	0.02	0.1	0.1	0.05	0.1	0.01	0.1	0.02	1	0.1	0.1	10	2	0.01	0.01	0.04	0.01	0.01	0.01	
G1-SMI	Prep Blank	0.05	0.51	41.9	0.4	<0.05	0.8	4.47	19.8	0.02	<1	0.3	29.4	<10	<2	67.12	15.95	3.41	1.02	3.48	3.59
06A1	Rock	0.21	0.14	9.6	0.3	<0.05	6.4	9.33	16.0	<0.02	<1	0.5	10.8	<10	<2	N.A.	N.A.	N.A.	N.A.	N.A.	N.A.
06B1	Rock	0.24	0.19	12.0	0.3	<0.05	7.1	9.36	16.2	0.02	<1	0.8	7.8	<10	<2	N.A.	N.A.	N.A.	N.A.	N.A.	N.A.
07A1	Rock	0.21	0.15	7.3	0.3	<0.05	5.0	8.76	10.7	0.02	<1	0.5	8.4	<10	<2	N.A.	N.A.	N.A.	N.A.	N.A.	N.A.
07B1	Rock	0.26	0.14	4.6	0.5	<0.05	6.7	9.81	15.8	0.02	<1	0.4	19.3	<10	<2	N.A.	N.A.	N.A.	N.A.	N.A.	N.A.
08A1	Rock	0.26	0.21	5.6	0.4	<0.05	8.9	10.74	21.9	0.03	<1	0.7	12.8	<10	<2	N.A.	N.A.	N.A.	N.A.	N.A.	N.A.
08B1	Rock	0.22	0.12	6.1	0.2	<0.05	6.4	8.56	12.8	0.02	<1	0.5	12.9	<10	<2	N.A.	N.A.	N.A.	N.A.	N.A.	N.A.
08C1	Rock	N.A.	N.A.	N.A.	N.A.	N.A.	N.A.	N.A.	N.A.	N.A.	N.A.	N.A.	N.A.	N.A.	N.A.	55.58	17.42	7.35	3.04	6.34	2.31

This report supersedes all previous preliminary and final reports with this file number dated prior to the date on this certificate. Signature indicates final approval; preliminary reports are unsigned and should be used for reference only.



Acme Analytical Laboratories (Vancouver) Ltd.

1020 Cordova St. East Vancouver BC V6A 4A3 Canada

Phone (604) 253-3158 Fax (604) 253-1716

www.acmelab.com

Client: **Donald Bunce**
21670 Chief Lake Rd.
Prince George BC V2K 5K5 Canada

Project: **Jade Fever**
Report Date: **September 13, 2012**

Page: 2 of 2

Part: 4 of 4

CERTIFICATE OF ANALYSIS

SMI12000169.1

Method	4A	4A	4A	4A	4A	4A	4A	4A	4A	4A	4A	4A	4A	7TD	7TD	7TD	LOI
Analyte	K2O	TiO2	P2O5	MnO	Cr2O3	Ba	Sr	Zr	Y	Nb	Sc	Sum	Cu	Ni	Co	LOI	
Unit	%	%	%	%	%	ppm	ppm	ppm	ppm	ppm	ppm	%	%	%	%	%	
MDL	0.01	0.01	0.01	0.01	0.002	5	2	5	3	5	1	0.01	0.001	0.001	0.001	-5.11	
G1-SMI	Prep Blank	3.84	0.39	0.17	0.10	<0.002	1166	773	141	18	17	5	99.82	<0.001	<0.001	<0.001	0.51
06A1	Rock	N.A.	N.A.	N.A.	N.A.	N.A.	N.A.	N.A.	N.A.	N.A.	N.A.	N.A.	N.A.	N.A.	N.A.	N.A.	N.A.
06B1	Rock	N.A.	N.A.	N.A.	N.A.	N.A.	N.A.	N.A.	N.A.	N.A.	N.A.	N.A.	N.A.	N.A.	N.A.	N.A.	N.A.
07A1	Rock	N.A.	N.A.	N.A.	N.A.	N.A.	N.A.	N.A.	N.A.	N.A.	N.A.	N.A.	N.A.	N.A.	N.A.	N.A.	N.A.
07B1	Rock	N.A.	N.A.	N.A.	N.A.	N.A.	N.A.	N.A.	N.A.	N.A.	N.A.	N.A.	N.A.	N.A.	N.A.	N.A.	N.A.
08A1	Rock	N.A.	N.A.	N.A.	N.A.	N.A.	N.A.	N.A.	N.A.	N.A.	N.A.	N.A.	N.A.	N.A.	N.A.	N.A.	N.A.
08B1	Rock	N.A.	N.A.	N.A.	N.A.	N.A.	N.A.	N.A.	N.A.	N.A.	N.A.	N.A.	N.A.	N.A.	N.A.	N.A.	N.A.
08C1	Rock	2.66	0.77	0.26	0.12	0.011	1352	266	114	20	10	17	99.70	0.002	0.003	0.002	3.63

This report supersedes all previous preliminary and final reports with this file number dated prior to the date on this certificate. Signature indicates final approval; preliminary reports are unsigned and should be used for reference only.



Acme Analytical Laboratories (Vancouver) Ltd.

1020 Cordova St. East Vancouver BC V6A 4A3 Canada
 Phone (604) 253-3158 Fax (604) 253-1716

www.acmelab.com

Client: **Donald Bunce**
 21670 Chief Lake Rd.
 Prince George BC V2K 5K5 Canada

Project: **Jade Fever**
 Report Date: **September 13, 2012**

Page: 1 of 1

Part: 1 of 4

QUALITY CONTROL REPORT

SMI12000169.1

Method	WGHT	1F15	1F15	1F15	1F15	1F15	1F15	1F15	1F15	1F15	1F15	1F15	1F15	1F15	1F15	1F15	1F15	1F15	1F15	1F15	1F15
Analyte	Wgt	Mo	Cu	Pb	Zn	Ag	Ni	Co	Mn	Fe	As	U	Au	Th	Sr	Cd	Sb	Bi	V	Ca	
Unit	kg	ppm	ppm	ppm	ppm	ppb	ppm	ppm	ppm	%	ppm	ppm	ppb	ppm	ppm	ppm	ppm	ppm	ppm	%	
MDL	0.01	0.01	0.01	0.01	0.1	2	0.1	0.1	1	0.01	0.1	0.1	0.2	0.1	0.5	0.01	0.02	0.02	2	0.01	
Pulp Duplicates																					
06B1	Rock	0.23	0.17	20.44	9.78	60.8	64	10.5	9.3	509	2.36	1.4	0.4	6.2	1.8	91.1	0.10	0.08	0.03	58	1.65
REP 06B1	QC		0.18	21.12	10.23	61.3	66	9.6	9.3	522	2.44	1.3	0.4	4.2	1.8	94.5	0.10	0.08	0.03	60	1.69
08C1	Rock	0.34	N.A.	N.A.	N.A.	N.A.	N.A.	N.A.	N.A.	N.A.	N.A.	N.A.	N.A.	N.A.	N.A.	N.A.	N.A.	N.A.	N.A.	N.A.	N.A.
REP 08C1	QC																				
Reference Materials																					
STD DOLOMITE-2-D	Standard																				
STD DS9	Standard		14.25	107.3	137.6	313.2	2031	43.8	8.3	620	2.32	24.4	2.6	121.7	6.0	67.5	2.28	5.29	5.76	39	0.75
STD NILAT-N3	Standard																				
STD NILAT-N3	Standard																				
STD NILAT-N3	Standard																				
STD OREAS182	Standard																				
STD SO-18-D	Standard																				
STD DS9 Expected			12.84	108	128	317	1830	40.3	7.6	575	2.33	25.5	2.69	118	6.38	69.6	2.4	4.94	6.32	40	0.7201
STD DOLOMITE-2-D																					
STD NILAT-N3 Expected																					
STD OREAS182 Expected																					
BLK	Blank		<0.01	<0.01	0.01	<0.1	<2	<0.1	<0.1	1	<0.01	<0.1	<0.1	<0.2	<0.1	<0.5	<0.01	<0.02	<0.02	<2	<0.01
BLK	Blank																				
BLK	Blank																				
Prep Wash																					
G1-SMI	Prep Blank	<0.01	0.11	1.88	11.02	50.8	40	2.8	3.9	547	1.76	<0.1	1.2	<0.2	4.3	52.1	0.05	<0.02	0.10	32	0.45

This report supersedes all previous preliminary and final reports with this file number dated prior to the date on this certificate. Signature indicates final approval; preliminary reports are unsigned and should be used for reference only.



Acme Analytical Laboratories (Vancouver) Ltd.
 1020 Cordova St. East Vancouver BC V6A 4A3 Canada
 Phone (604) 253-3158 Fax (604) 253-1716

www.acmelab.com

Client: **Donald Bunce**
 21670 Chief Lake Rd.
 Prince George BC V2K 5K5 Canada

Project: **Jade Fever**
 Report Date: **September 13, 2012**

Page: 1 of 1

Part: 2 of 4

QUALITY CONTROL REPORT

SMI12000169.1

Method		1F15	1F15	1F15	1F15	1F15	1F15	1F15	1F15	1F15	1F15	1F15	1F15	1F15	1F15	1F15	1F15	1F15	1F15	1F15	1F15
Analyte		P	La	Cr	Mg	Ba	Tl	B	Al	Na	K	W	Sc	Ti	S	Hg	Se	Te	Ge	Cs	Ge
Unit		%	ppm	ppm	%	ppm	%	ppm	%	%	%	ppm	ppm	ppm	%	ppb	ppm	ppm	ppm	ppm	ppm
MDL		0.001	0.5	0.5	0.01	0.5	0.001	1	0.01	0.001	0.01	0.1	0.1	0.02	0.02	5	0.1	0.02	0.1	0.02	0.1
Pulp Duplicates																					
06B1	Rock	0.099	7.7	17.8	0.57	383.9	0.133	5	1.79	0.098	0.44	0.3	5.2	0.07	<0.02	12	<0.1	<0.02	7.1	1.80	<0.1
REP 06B1	QC	0.098	8.0	17.7	0.58	400.6	0.139	5	1.85	0.100	0.44	0.3	5.2	0.07	<0.02	18	<0.1	<0.02	7.0	1.88	<0.1
08C1	Rock	N.A.	N.A.	N.A.	N.A.	N.A.	N.A.	N.A.	N.A.	N.A.	N.A.	N.A.	N.A.	N.A.	N.A.	N.A.	N.A.	N.A.	N.A.	N.A.	N.A.
REP 08C1	QC																				
Reference Materials																					
STD DOLOMITE-2-D	Standard																				
STD DS9	Standard	0.083	13.1	124.2	0.82	323.4	0.114	3	1.00	0.084	0.41	3.3	2.6	6.18	0.16	229	5.6	5.61	5.2	2.61	<0.1
STD NILAT-N3	Standard																				
STD NILAT-N3	Standard																				
STD NILAT-N3	Standard																				
STD OREAS182	Standard																				
STD SO-18-D	Standard																				
STD DS9 Expected		0.0819	13.3	121	0.6165	295	0.1108		0.9577	0.0853	0.395	2.89	2.6	5.3	0.1615	200	5.2	5.02	4.59	2.37	0.1
STD DOLOMITE-2-D																					
STD NILAT-N3 Expected																					
STD OREAS182 Expected																					
BLK	Blank	<0.001	<0.5	<0.5	<0.01	<0.5	<0.001	<1	<0.01	<0.001	<0.01	<0.1	<0.1	<0.02	<0.02	<5	<0.1	<0.02	<0.1	<0.02	<0.1
BLK	Blank																				
BLK	Blank																				
Prep Wash																					
G1-SMI	Prep Blank	0.069	10.5	9.6	0.49	158.2	0.093	<1	0.90	0.108	0.50	<0.1	2.1	0.33	<0.02	<5	<0.1	<0.02	5.0	3.02	<0.1

This report supersedes all previous preliminary and final reports with this file number dated prior to the date on this certificate. Signature indicates final approval; preliminary reports are unsigned and should be used for reference only.



Acme Analytical Laboratories (Vancouver) Ltd.

1020 Cordova St. East Vancouver BC V6A 4A3 Canada

Phone (604) 253-3158 Fax (604) 253-1716

www.acmelab.com

Client: **Donald Bunce**
21670 Chief Lake Rd.
Prince George BC V2K 5K5 Canada

Project: **Jade Fever**
Report Date: **September 13, 2012**

Page: 1 of 1

Part: 3 of 4

QUALITY CONTROL REPORT

SMI12000169.1

Method	Analyte	Unit	MDL	1F15	1F15	1F15	1F15	1F15	1F15	1F15	1F15	1F15	1F15	1F15	1F15	4A	4A	4A	4A	4A	4A		
				Hf	Nb	Rb	Sn	Ta	Zr	Y	Ce	In	Re	Be	Li	Pd	Pt	SiO2	Al2O3	Fe2O3	MgO	CaO	Na2O
				ppm	ppm	ppm	ppm	ppm	ppm	ppm	ppm	ppm	ppb	ppm	ppm	ppb	ppb	%	%	%	%	%	%
Pulp Duplicates																							
06B1	Rock			0.24	0.19	12.0	0.3	<0.05	7.1	9.38	16.2	0.02	<1	0.8	7.8	<10	<2	N.A.	N.A.	N.A.	N.A.	N.A.	N.A.
REP 06B1	QC			0.22	0.20	12.3	0.3	<0.05	7.1	9.63	17.3	0.03	<1	0.8	7.8	<10	<2						
08C1	Rock			N.A.	N.A.	N.A.	N.A.	N.A.	N.A.	N.A.	N.A.	N.A.	N.A.	N.A.	N.A.	N.A.	N.A.	55.58	17.42	7.35	3.04	6.34	2.31
REP 08C1	QC																	55.58	17.41	7.40	3.04	6.34	2.31
Reference Materials																							
STD DOLOMITE-2-D	Standard																						
STD DS9	Standard			0.08	1.49	34.6	6.0	<0.05	2.0	6.55	25.0	2.04	65	5.6	27.6	122	374						
STD NILAT-N3	Standard																	47.65	2.86	33.63	5.72	0.27	0.02
STD NILAT-N3	Standard																						
STD OREAS182	Standard																	57.81	14.15	7.67	3.37	6.41	3.64
STD SO-18-D	Standard																						
STD DS9 Expected				0.08	1.33	33.8	6.4	0.004	2	5.97	25.4	2.2	61	5.4	25.2	120	350						
STD DOLOMITE-2-D																							
STD NILAT-N3 Expected																		48.132	2.847	33.253	5.672	0.27	0.013
STD OREAS182 Expected																							
BLK	Blank			<0.02	<0.02	<0.1	<0.1	<0.05	<0.1	<0.01	<0.1	<0.02	<1	<0.1	<0.1	<10	<2						
BLK	Blank																	<0.01	<0.01	<0.04	<0.01	<0.01	<0.01
BLK	Blank																						
Prep Wash																							
G1-SMI	Prep Blank			0.05	0.51	41.9	0.4	<0.05	0.8	4.47	19.8	0.02	<1	0.3	29.4	<10	<2	67.12	15.95	3.41	1.02	3.48	3.59

This report supersedes all previous preliminary and final reports with this file number dated prior to the date on this certificate. Signature indicates final approval; preliminary reports are unsigned and should be used for reference only.

- 13 -



Acme Analytical Laboratories (Vancouver) Ltd.

1020 Cordova St. East Vancouver BC V6A 4A3 Canada
 Phone (604) 253-3158 Fax (604) 253-1716

www.acmelab.com

Client: **Donald Bunce**
 21670 Chief Lake Rd.
 Prince George BC V2K 5K5 Canada

Project: Jade Fever
 Report Date: September 13, 2012

Page: 1 of 1

Part: 4 of 4

QUALITY CONTROL REPORT

SMI12000169.1

Method		4A	4A	4A	4A	4A	4A	4A	4A	4A	4A	4A	4A	7TD	7TD	7TD	LOI
Analyte		K2O	TiO2	P2O5	MnO	Cr2O3	Ba	Sr	Zr	Y	Nb	Sc	Sum	Cu	Ni	Co	LOI
Unit		%	%	%	%	%	ppm	ppm	ppm	ppm	ppm	ppm	%	%	%	%	%
MDL		0.01	0.01	0.01	0.01	0.002	5	2	5	3	5	1	0.01	0.001	0.001	0.001	-5.11
Pulp Duplicates																	
06B1	Rock	N.A.	N.A.	N.A.	N.A.	N.A.	N.A.	N.A.	N.A.	N.A.	N.A.	N.A.	N.A.	N.A.	N.A.	N.A.	N.A.
REP 06B1	QC																
08C1	Rock	2.66	0.77	0.26	0.12	0.011	1352	266	114	20	10	17	99.70	0.002	0.003	0.002	3.63
REP 08C1	QC	2.67	0.77	0.26	0.12	0.011	1340	264	136	19	<5	16	99.74	0.002	0.003	0.001	3.72
Reference Materials																	
STD DOLOMITE-2-D	Standard																46.02
STD DS9	Standard																
STD NILAT-N3	Standard																5.95
STD NILAT-N3	Standard	0.04	0.07	<0.01	0.66	1.840	164	5	24	8	<5	18	99.52				
STD NILAT-N3	Standard													0.004	0.701	0.082	
STD OREAS182	Standard													0.004	0.707	0.072	
STD SO-18-D	Standard	2.15	0.69	0.80	0.39	0.548	495	391	290	30	13	24	99.68				
STD DS9 Expected																	
STD DOLOMITE-2-D																	45.9
STD NILAT-N3 Expected		0.035	0.073	0.026	0.66	1.837	161	5	21.79	9.14		18		0.005	0.708	0.078	5.86
STD OREAS182 Expected														0.0049	0.706	0.0723	
BLK	Blank																
BLK	Blank	<0.01	<0.01	<0.01	<0.01	<0.002	<5	<2	<5	<3	<5	<1	<0.01				
BLK	Blank													<0.001	<0.001	<0.001	
Prep Wash																	
G1-SMI	Prep Blank	3.84	0.39	0.17	0.10	<0.002	1166	773	141	18	17	5	99.82	<0.001	<0.001	<0.001	0.51

This report supersedes all previous preliminary and final reports with this file number dated prior to the date on this certificate. Signature indicates final approval; preliminary reports are unsigned and should be used for reference only.



Acme Analytical Laboratories (Vancouver) Ltd.
1020 Cordova St. East Vancouver BC V6A 4A3 Canada

www.acmelab.com

Client: **Donald Bunce**
21670 Chief Lake Rd.
Prince George BC V2K 5K5 Canada

Submitted By: Donald Bunce
Receiving Lab: Canada-Smithers
Received: October 05, 2012
Report Date: November 28, 2012
Page: 1 of 2

CERTIFICATE OF ANALYSIS

SMI12000450.1

CLIENT JOB INFORMATION

Project: Jade Fever
Shipment ID:
P.O. Number
Number of Samples: 3

SAMPLE DISPOSAL

DISP-PLP Dispose of Pulp After 90 days
DISP-RJT Dispose of Reject After 90 days

SAMPLE PREPARATION AND ANALYTICAL PROCEDURES

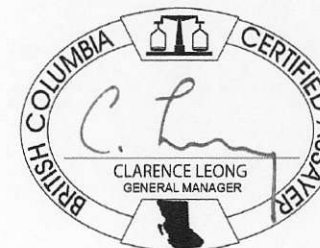
Method Code	Number of Samples	Code Description	Test Wgt (g)	Report Status	Lab
R200-250	3	Crush, split and pulverize 250 g rock to 200 mesh			SMI
1F05	3	1:1:1 Aqua Regia digestion Ultratrace ICP-MS analysis	15	Completed	VAN
Split Dry 105	3				VAN
Split Dry LOI	3				VAN
Dry at 105C	3	Dry pulps @ 105 Deg. prior to analysis			VAN
4A	3	LiBO2/Li2B4O7 fusion ICP-ES analysis	0.1	Completed	VAN
7TD	3	Cu Ni Co by 4 Acid digestion, analysis by ICP-ES	0.5	Completed	VAN
LOI	3	Loss by loss on ignition		Completed	VAN

ADDITIONAL COMMENTS

Acme does not accept responsibility for samples left at the laboratory after 90 days without prior written instructions for sample storage or return.

Invoice To: Donald Bunce
21670 Chief Lake Rd.
Prince George BC V2K 5K5
Canada

CC:



This report supersedes all previous preliminary and final reports with this file number dated prior to the date on this certificate. Signature indicates final approval; preliminary reports are unsigned and should be used for reference only. All results are considered the confidential property of the client. Acme assumes the liabilities for actual cost of analysis only. Results apply to samples as submitted. "*" asterisk indicates that an analytical result could not be provided due to unusually high levels of interference from other elements.

- 15 -



Acme Analytical Laboratories (Vancouver) Ltd.

1020 Cordova St. East Vancouver BC V6A 4A3 Canada

Phone (604) 253-3158 Fax (604) 253-1716

www.acmelab.com

Client: **Donald Bunce**
21870 Chief Lake Rd.
Prince George BC V2K 5K5 Canada

Project: **Jade Fever**
Report Date: **November 28, 2012**

Page: 2 of 2

Part: 1 of 1

CERTIFICATE OF ANALYSIS

SMI12000450.1

Method	WGHT	1F16	1F16	1F16	1F16	1F16	1F16	1F16	1F16	1F16	1F16	1F16	1F16	1F16	1F16	1F16	1F16	1F16	1F16	1F16	
Analyte	Wgt	Mo	Cu	Pb	Zn	Ag	Ni	Co	Mn	Fe	As	U	Au	Th	Sr	Cd	Sb	Bi	V	Ca	
Unit	kg	ppm	ppm	ppm	ppm	ppb	ppm	ppm	ppm	%	ppm	ppm	ppb	ppm	ppm	ppm	ppm	ppm	ppm	%	
MDL	0.01	0.01	0.01	0.01	0.1	2	0.1	0.1	1	0.01	0.1	0.1	0.2	0.1	0.5	0.01	0.02	0.02	2	0.01	
G1-SMI	Prep Blank	<0.01	0.08	2.43	2.53	50.8	12	3.9	4.2	576	1.85	0.1	1.2	0.4	4.9	44.3	0.02	0.03	0.07	32	0.43
G1-SMI	Prep Blank	<0.01	0.12	2.73	2.91	50.8	22	4.8	5.3	632	2.00	1.1	1.4	0.9	5.6	58.0	0.01	<0.02	0.04	34	0.49
09A1	Rock	0.51	0.11	19.65	3.50	26.9	13	19.6	5.1	276	1.70	0.8	<0.1	0.4	1.5	19.8	0.01	0.09	0.11	6	0.22
09B1	Rock	0.48	0.18	17.18	2.81	21.3	18	14.0	3.3	208	1.24	2.0	<0.1	0.2	1.8	7.2	0.03	0.19	0.10	4	0.05
09C1	Rock	0.28	0.13	63.79	3.62	20.3	48	10.7	3.8	183	1.18	1.8	<0.1	0.3	2.4	6.0	<0.01	0.16	0.13	4	0.07



Acme Analytical Laboratories (Vancouver) Ltd.

1020 Cordova St. East Vancouver BC V6A 4A3 Canada

Phone (604) 253-3158 Fax (604) 253-1716

www.acmelab.com

Client: **Donald Bunce**
21670 Chief Lake Rd.
Prince George BC V2K 5K5 Canada

Project: Jade Fever
Report Date: November 28, 2012

Page: 2 of 2

Part: 2 of 1

CERTIFICATE OF ANALYSIS

SMI12000450.1

Method	1F15	1F15	1F15	1F15	1F15	1F15	1F15	1F15	1F15	1F15	1F15	1F15	1F15	1F15	1F15	1F15	1F15	1F15	1F15	1F15	
Analyte	P	La	Cr	Mg	Ba	Tl	B	Al	Na	K	W	Sc	Tl	S	Hg	Se	Te	Ga	Ce	Ge	
Unit	%	ppm	ppm	%	ppm	%	ppm	%	%	%	ppm	ppm	ppm	%	ppb	ppm	ppm	ppm	ppm	ppm	
MDL	0.001	0.5	0.5	0.01	0.5	0.001	1	0.01	0.001	0.01	0.1	0.1	0.02	0.02	5	0.1	0.02	0.1	0.02	0.1	
G1-SMI	Prep Blank	0.072	8.6	9.5	0.59	218.6	0.110	<1	0.88	0.058	0.47	<0.1	2.0	0.27	<0.02	11	<0.1	<0.02	4.9	2.30	0.1
G1-SMI	Prep Blank	0.082	9.6	8.2	0.62	233.5	0.117	<1	1.00	0.069	0.50	<0.1	2.3	0.31	<0.02	<5	<0.1	<0.02	5.2	2.56	0.1
09A1	Rock	0.008	4.9	9.7	0.52	112.5	0.033	2	0.76	0.002	0.11	<0.1	1.1	0.05	<0.02	7	<0.1	0.05	2.5	0.15	<0.1
09B1	Rock	0.012	9.6	5.9	0.42	116.6	0.001	1	0.60	0.002	0.12	<0.1	1.0	0.04	<0.02	9	0.1	<0.02	1.8	0.16	<0.1
09C1	Rock	0.013	4.1	6.7	0.36	136.0	0.035	1	0.56	0.002	0.14	<0.1	1.1	0.03	<0.02	10	<0.1	0.02	1.6	0.15	<0.1

This report supersedes all previous preliminary and final reports with this file number dated prior to the date on this certificate. Signature indicates final approval; preliminary reports are unsigned and should be used for reference only.



Acme Analytical Laboratories (Vancouver) Ltd.

1020 Cordova St. East Vancouver BC V6A 4A3 Canada
 Phone (604) 253-3158 Fax (604) 253-1716

www.acmelab.com

Client: **Donald Bunce**
 21670 Chief Lake Rd.
 Prince George BC V2K 5K5 Canada

Project: Jade Fever
 Report Date: November 28, 2012

Page: 2 of 2

Part: 3 of 1

CERTIFICATE OF ANALYSIS

SMI12000450.1

Method	1F15	1F15	1F15	1F15	1F15	1F15	1F15	1F15	1F15	1F15	1F15	1F15	1F15	1F15	4A	4A	4A	4A	4A	4A	
Analyte	Hf	Nb	Rb	Sn	Ta	Zr	Y	Ce	In	Re	Be	Li	Pd	Pt	SiO2	Al2O3	Fe2O3	MgO	CaO	Na2O	
Unit	ppm	ppm	ppm	ppm	ppm	ppm	ppm	ppm	ppm	ppb	ppm	ppm	ppb	ppb	%	%	%	%	%	%	
MDL	0.02	0.02	0.1	0.1	0.05	0.1	0.01	0.1	0.02	1	0.1	0.1	10	2	0.01	0.01	0.04	0.01	0.01	0.01	
G1-SMI	Prep Blank	0.09	0.40	35.6	0.3	<0.05	1.1	4.22	15.9	0.02	2	0.3	29.8	<10	<2	88.22	15.32	3.14	1.15	3.38	3.43
G1-SMI	Prep Blank	0.08	0.40	37.9	0.3	<0.05	1.2	4.47	17.8	<0.02	1	0.2	33.3	<10	<2	87.57	15.43	3.43	1.23	3.41	3.47
09A1	Rock	0.06	0.10	4.0	0.2	<0.05	1.7	3.27	10.7	<0.02	<1	0.2	8.4	<10	3	89.17	3.82	2.73	1.13	0.33	0.03
09B1	Rock	0.03	0.02	4.3	<0.1	<0.05	1.4	2.30	20.9	<0.02	<1	0.1	6.8	<10	<2	90.53	3.68	2.00	1.04	0.07	0.01
09C1	Rock	0.08	0.14	4.7	0.2	<0.05	3.1	3.87	12.1	<0.02	<1	<0.1	6.3	<10	<2	88.13	6.03	2.14	1.10	0.15	0.03

This report supersedes all previous preliminary and final reports with this file number dated prior to the date on this certificate. Signature indicates final approval; preliminary reports are unsigned and should be used for reference only.



Acme Analytical Laboratories (Vancouver) Ltd.

1020 Cordova St. East Vancouver BC V6A 4A3 Canada

Phone (604) 253-3158 Fax (604) 253-1716

www.acmelab.com

Client: **Donald Bunce**
21670 Chief Lake Rd.
Prince George BC V2K 5K5 Canada

Project: Jade Fever
Report Date: November 28, 2012

Page: 2 of 2

Part: 4 of 1

CERTIFICATE OF ANALYSIS

SMI12000450.1

Method	4A	4A	4A	4A	4A	4A	4A	4A	4A	4A	4A	4A	4A	7TD	7TD	7TD	LOI
Analyte	K2O	TiO2	P2O5	MnO	Cr2O3	Ba	Sr	Zr	Y	Nb	Sc	Sum	Cu	Ni	Co	LOI	
Unit	%	%	%	%	%	ppm	ppm	ppm	ppm	ppm	ppm	%	%	%	%	%	
MDL	0.01	0.01	0.01	0.01	0.002	5	2	5	3	5	1	0.01	0.001	0.001	0.001	-5.11	
G1-SMI	Prep Blank	3.67	0.39	0.18	0.09	0.005	1050	693	152	18	20	8	99.81	<0.001	<0.001	<0.001	0.80
G1-SMI	Prep Blank	3.73	0.40	0.21	0.10	0.004	1085	722	136	19	30	7	99.83	<0.001	<0.001	<0.001	0.81
09A1	Rock	1.01	0.16	0.03	0.03	0.004	920	26	35	5	<5	5	99.88	0.001	0.002	<0.001	1.32
09B1	Rock	1.07	0.17	0.04	0.03	0.003	966	13	36	8	11	4	99.88	0.002	0.002	<0.001	1.12
09C1	Rock	1.63	0.23	0.06	0.02	0.007	1486	12	46	9	<5	7	99.98	0.005	0.001	<0.001	1.30

This report supersedes all previous preliminary and final reports with this file number dated prior to the date on this certificate. Signature indicates final approval; preliminary reports are unsigned and should be used for reference only.



Acme Analytical Laboratories (Vancouver) Ltd.

1020 Cordova St. East Vancouver BC V6A 4A3 Canada

Phone (604) 253-3158 Fax (604) 253-1716

www.acmelab.com

Client: **Donald Bunce**
21870 Chief Lake Rd.
Prince George BC V2K 5K5 Canada

Project: **Jade Fever**
Report Date: **November 28, 2012**

Page: 1 of 1

Part: 1 of 1

QUALITY CONTROL REPORT

SMI12000450.1

Method	WGHT	1F15	1F15	1F15	1F15	1F15	1F15	1F15	1F15	1F15	1F15	1F15	1F15	1F15	1F15	1F15	1F15	1F15	1F15	1F15	1F15
Analyte	Wgt	Mo	Cu	Pb	Zn	Ag	Ni	Co	Mn	Fe	As	U	Au	Th	Sr	Cd	Sb	Bi	V	Ca	
Unit	kg	ppm	ppm	ppm	ppm	ppb	ppm	ppm	ppm	%	ppm	ppm	ppb	ppm	ppm	ppm	ppm	ppm	ppm	%	
MDL	0.01	0.01	0.01	0.01	0.01	2	0.1	0.1	1	0.01	0.1	0.1	0.2	0.1	0.5	0.01	0.02	0.02	2	0.01	
Pulp Duplicates																					
09C1	Rock	0.28	0.13	63.79	3.62	20.3	48	10.7	3.8	163	1.18	1.6	<0.1	0.3	2.4	6.0	<0.01	0.16	0.13	4	0.07
REP 09C1	QC		0.14	64.72	3.79	22.0	44	11.3	3.8	173	1.20	2.0	<0.1	0.8	2.4	6.1	0.02	0.17	0.13	4	0.08
Reference Materials																					
STD DOLOMITE-2-D	Standard																				
STD DS9	Standard		13.99	119.1	128.5	317.9	1742	44.9	8.5	585	2.35	24.7	2.7	104.5	6.6	63.4	2.31	5.07	6.64	39	0.74
STD NILAT-N3	Standard																				
STD NILAT-N3	Standard																				
STD NILAT-N3	Standard																				
STD OREAS182	Standard																				
STD SO-18-D	Standard																				
STD DS9 Expected			12.84	108	126	317	1830	40.3	7.6	575	2.33	25.5	2.69	118	6.38	69.6	2.4	4.94	6.32	40	0.7201
STD DOLOMITE-2-D																					
STD NILAT-N3 Expected																					
STD OREAS182 Expected																					
BLK	Blank		<0.01	0.03	<0.01	<0.1	<2	<0.1	<0.1	<1	<0.01	0.2	<0.1	<0.2	<0.1	<0.5	<0.01	<0.02	<0.02	<2	<0.01
BLK	Blank																				
BLK	Blank																				
Prep Wash																					
G1-SMI	Prep Blank	<0.01	0.08	2.43	2.53	50.6	12	3.9	4.2	576	1.85	0.1	1.2	0.4	4.9	44.3	0.02	0.03	0.07	32	0.43
G1-SMI	Prep Blank	<0.01	0.12	2.73	2.91	50.8	22	4.8	5.3	632	2.00	1.1	1.4	0.9	5.8	58.0	0.01	<0.02	0.04	34	0.49

This report supersedes all previous preliminary and final reports with this file number dated prior to the date on this certificate. Signature indicates final approval; preliminary reports are unsigned and should be used for reference only.



Acme Analytical Laboratories (Vancouver) Ltd.

1020 Cordova St. East Vancouver BC V6A 4A3 Canada
 Phone (604) 253-3158 Fax (604) 253-1716

www.acmelab.com

Client: **Donald Bunce**
 21670 Chief Lake Rd.
 Prince George BC V2K 5K5 Canada

Project: **Jade Fever**
 Report Date: **November 28, 2012**

Page: 1 of 1

Part: 2 of 1

QUALITY CONTROL REPORT

SMI12000450.1

Method		1F15	1F15	1F15	1F15	1F15	1F15	1F15	1F15	1F15	1F15	1F15	1F15	1F15	1F15	1F15	1F15	1F15	1F15	1F15	
Analyte		P	La	Cr	Mg	Ba	Tl	B	Al	Na	K	W	Sc	Ti	S	Hg	Se	Te	Ga	Ce	Ge
Unit		%	ppm	ppm	%	ppm	%	ppm	%	%	%	ppm	ppm	ppm	%	ppb	ppm	ppm	ppm	ppm	ppm
MDL		0.001	0.5	0.5	0.01	0.5	0.001	1	0.01	0.001	0.01	0.1	0.1	0.02	0.02	5	0.1	0.02	0.1	0.02	0.1
Pulp Duplicates																					
09C1	Rock	0.013	4.1	6.7	0.36	136.0	0.035	1	0.56	0.002	0.14	<0.1	1.1	0.03	<0.02	10	<0.1	0.02	1.6	0.15	<0.1
REP 09C1	QC	0.013	4.3	7.1	0.38	140.3	0.038	2	0.57	0.002	0.14	<0.1	1.2	0.03	<0.02	6	<0.1	0.03	1.7	0.16	<0.1
Reference Materials																					
STD DOLOMITE-2-D	Standard																				
STD DS9	Standard	0.087	14.1	115.8	0.63	289.5	0.115	3	0.97	0.083	0.41	3.1	2.3	5.52	0.17	213	5.3	5.89	4.5	2.35	0.2
STD NILAT-N3	Standard																				
STD NILAT-N3	Standard																				
STD NILAT-N3	Standard																				
STD OREAS182	Standard																				
STD SO-18-D	Standard																				
STD DS9 Expected		0.0819	13.3	121	0.6165	295	0.1108		0.9577	0.0853	0.395	2.89	2.5	5.3	0.1615	200	5.2	5.02	4.59	2.37	0.1
STD DOLOMITE-2-D																					
STD NILAT-N3 Expected																					
STD OREAS182 Expected																					
BLK	Blank	<0.001	<0.5	<0.5	<0.01	<0.5	<0.001	<1	<0.01	<0.001	<0.01	<0.1	<0.1	<0.02	<0.02	<5	<0.1	<0.02	<0.1	<0.02	<0.1
BLK	Blank																				
BLK	Blank																				
Prep Wash																					
G1-SMI	Prep Blank	0.072	8.6	9.5	0.59	218.6	0.110	<1	0.88	0.058	0.47	<0.1	2.0	0.27	<0.02	11	<0.1	<0.02	4.9	2.30	0.1
G1-SMI	Prep Blank	0.082	9.6	8.2	0.62	233.5	0.117	<1	1.00	0.069	0.50	<0.1	2.3	0.31	<0.02	<5	<0.1	<0.02	5.2	2.56	0.1

This report supersedes all previous preliminary and final reports with this file number dated prior to the date on this certificate. Signature indicates final approval; preliminary reports are unsigned and should be used for reference only.

- 21 -



Acme Analytical Laboratories (Vancouver) Ltd.

1020 Cordova St. East Vancouver BC V6A 4A3 Canada

Phone (604) 253-3158 Fax (604) 253-1716

www.acmelab.com

Client: **Donald Bunce**
21870 Chief Lake Rd.
Prince George BC V2K 5K5 Canada

Project: **Jade Fever**
Report Date: **November 28, 2012**

Page: 1 of 1

Part: 3 of 1

QUALITY CONTROL REPORT

SMI12000450.1

Method		1F15	1F15	1F15	1F15	1F15	1F15	1F15	1F15	1F15	1F15	1F15	1F15	1F15	4A	4A	4A	4A	4A	4A	
Analyte		Hf	Nb	Rb	Sn	Ta	Zr	Y	Ce	In	Re	Be	Li	Pd	Pt	SiO2	Al2O3	Fe2O3	MgO	CaO	Na2O
Unit		ppm	ppm	ppm	ppm	ppm	ppm	ppm	ppm	ppm	ppb	ppm	ppm	ppb	ppb	%	%	%	%	%	%
MDL		0.02	0.02	0.1	0.1	0.05	0.1	0.01	0.1	0.02	1	0.1	0.1	10	2	0.01	0.01	0.04	0.01	0.01	0.01
Pulp Duplicates																					
09C1	Rock	0.08	0.14	4.7	0.2	<0.05	3.1	3.87	12.1	<0.02	<1	<0.1	6.3	<10	<2	88.13	5.03	2.14	1.10	0.15	0.03
REP 09C1	QC	0.12	0.10	5.2	0.2	<0.05	3.2	4.10	12.8	<0.02	2	0.2	6.6	<10	<2	88.28	5.03	1.95	1.10	0.15	0.03
Reference Materials																					
STD DOLOMITE-2-D	Standard																				
STD DS9	Standard	0.07	1.49	32.6	5.4	<0.05	2.1	5.87	24.4	1.88	77	4.9	27.3	121	359						
STD NILAT-N3	Standard																				
STD NILAT-N3	Standard															47.57	2.87	33.72	5.77	0.27	<0.01
STD NILAT-N3	Standard																				
STD OREAS182	Standard																				
STD SO-18-D	Standard															57.90	14.19	7.71	3.37	6.40	3.62
STD DS9 Expected		0.08	1.33	33.8	6.4	0.004	2	5.97	25.4	2.2	61	5.4	25.2	120	350						
STD DOLOMITE-2-D																					
STD NILAT-N3 Expected																48.132	2.847	33.253	5.672	0.27	0.013
STD OREAS182 Expected																					
BLK	Blank	<0.02	<0.02	<0.1	<0.1	<0.05	<0.1	<0.01	<0.1	<0.02	<1	<0.1	<0.1	<10	<2						
BLK	Blank															<0.01	<0.01	<0.04	<0.01	<0.01	<0.01
BLK	Blank																				
Prep Wash																					
G1-SMI	Prep Blank	0.09	0.40	35.8	0.3	<0.05	1.1	4.22	15.9	0.02	2	0.3	29.8	<10	<2	68.22	15.32	3.14	1.15	3.38	3.43
G1-SMI	Prep Blank	0.08	0.40	37.9	0.3	<0.05	1.2	4.47	17.8	<0.02	1	0.2	33.3	<10	<2	67.57	15.43	3.43	1.23	3.41	3.47

This report supersedes all previous preliminary and final reports with this file number dated prior to the date on this certificate. Signature indicates final approval; preliminary reports are unsigned and should be used for reference only.



Acme Analytical Laboratories (Vancouver) Ltd.

1020 Cordova St. East Vancouver BC V6A 4A3 Canada
 Phone (604) 253-3158 Fax (604) 253-1716

www.acmelab.com

Client: **Donald Bunce**
 21670 Chief Lake Rd.
 Prince George BC V2K 5K5 Canada

Project: **Jade Fever**
 Report Date: **November 28, 2012**

Page: 1 of 1

Part: 4 of 1

QUALITY CONTROL REPORT

SMI12000450.1

Method		4A	4A	4A	4A	4A	4A	4A	4A	4A	4A	4A	7TD	7TD	7TD	LOI	
Analyte		K2O	TiO2	P2O5	MnO	Cr2O3	Ba	Sr	Zr	Y	Nb	Sc	Sum	Cu	Ni	Co	LOI
Unit		%	%	%	%	%	ppm	ppm	ppm	ppm	ppm	ppm	%	%	%	%	%
MDL		0.01	0.01	0.01	0.01	0.002	5	2	5	3	5	1	0.01	0.001	0.001	0.001	-5.11
Pulp Duplicates																	
09C1	Rock	1.83	0.23	0.06	0.02	0.007	1486	12	46	9	<5	7	99.98	0.005	0.001	<0.001	1.30
REP 09C1	QC	1.83	0.23	0.01	0.02	0.008	1490	12	48	9	5	6	99.92	0.008	<0.001	<0.001	1.23
Reference Materials																	
STD DOLOMITE-2-D	Standard																45.94
STD DS9	Standard																
STD NILAT-N3	Standard																5.90
STD NILAT-N3	Standard	0.03	0.07	<0.01	0.66	1.844	162	5	22	8	<5	18	99.59				
STD NILAT-N3	Standard													0.005	0.719	0.083	
STD OREAS182	Standard													0.005	0.711	0.073	
STD SO-18-D	Standard	2.14	0.69	0.83	0.39	0.551	492	392	297	28	15	24	99.85				
STD DS9 Expected																	
STD DOLOMITE-2-D																	45.9
STD NILAT-N3 Expected		0.035	0.073	0.026	0.66	1.837	161	5	21.79	9.14		18		0.005	0.708	0.078	5.86
STD OREAS182 Expected														0.0049	0.708	0.0723	
BLK	Blank																
BLK	Blank	<0.01	<0.01	<0.01	<0.01	<0.002	<5	<2	<5	<3	<5	<1	<0.01				
BLK	Blank													<0.001	<0.001	<0.001	
Prep Wash																	
G1-SMI	Prep Blank	3.67	0.39	0.18	0.09	0.005	1050	693	152	18	20	6	99.81	<0.001	<0.001	<0.001	0.60
G1-SMI	Prep Blank	3.73	0.40	0.21	0.10	0.004	1085	722	136	19	30	7	99.83	<0.001	<0.001	<0.001	0.61

This report supersedes all previous preliminary and final reports with this file number dated prior to the date on this certificate. Signature indicates final approval; preliminary reports are unsigned and should be used for reference only.

-23-

Statement of Exploration and Development

Statement of Costs

2012 Exploration costs (Jade Fever Project)

A - Compact excavator (KX41) costs	
- Trail construction - 0.29 km. 25 hours at \$53.37 per/ hour	\$1334.25
- Trail reclaimed - 0.024 km. 0.5 hours at \$53.37 per/hour	\$26.69
- Trench construction - 26.5 m. 9 hours at \$53.37 per/ hour	\$480.33
- Trench reclaimed - 19.5 m. 1.25 hours at \$53.37 per/ hour	\$66.71
	<hr/>
	\$1907.98
B - Rock analysis costs	\$503.85
C - Food & Lodging - 9 days at \$100.00 per/ day	\$900.00
	<hr/>
	\$3311.83
D - Transportation costs	\$662.37
	<hr/>
	\$3974.20
	<hr/>
	Total -

An explanation of transportation costs are on page 26

Statement of Exploration and Development

Explanation of transportation costs

We traveled from Jade City to the claims at the north end of Diese Lake every day, round trip is 154 km. per/day for 9 days with a 2009 Chev. 2500 4x4.

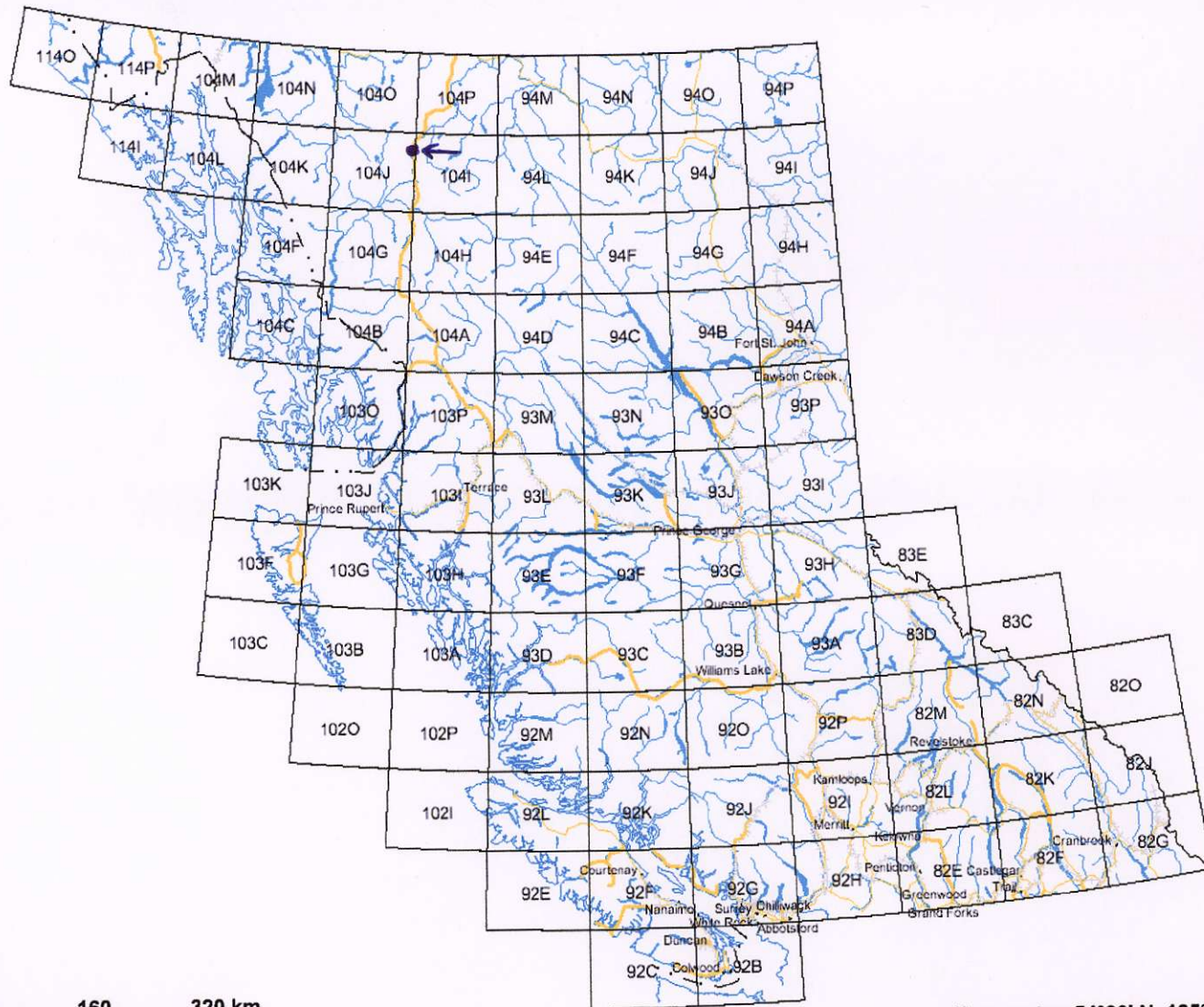
154 km. x 9 days = 1386 km. at \$0.55 per km. is a Total of \$762.30

Therefore transportation costs are 20 % - \$662.37

Author's Qualifications

I, Donald Bunce : am one of the recorded holders of the Jade Fever claims. I have been a jade prospector since 2005.

Internet Mapping Framework



Legend

- Provincial Boundary (1:6M)
- Boundary (International)
- Boundary (Interprovincial)
- NTS Grid
- Transportation - Lines (1:6M)
 - Road - Trunk
 - Road - Main
 - Rail Line
- Water - Lines (1:6M)
 - River/Stream - Definite
 - Lake - Definite
 - Island - Definite
 - Coastline - Definite
- Water - Polygons (1:6M)
 - River/Stream - Definite
 - Lake - Definite
- Major Cities

• Location of Jade Fever

0 160 320 km.

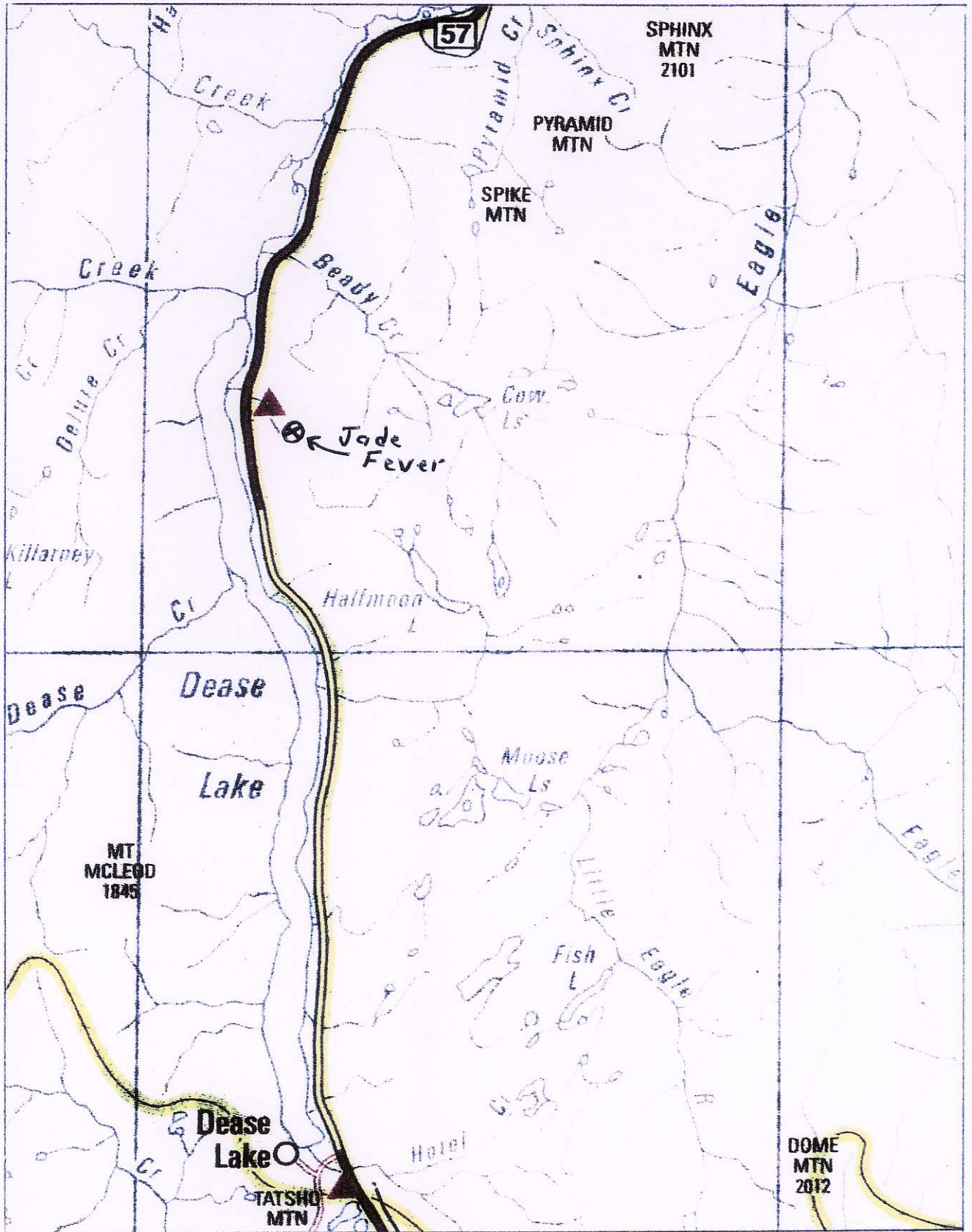
Map center: 54°20' N, 125°25' W

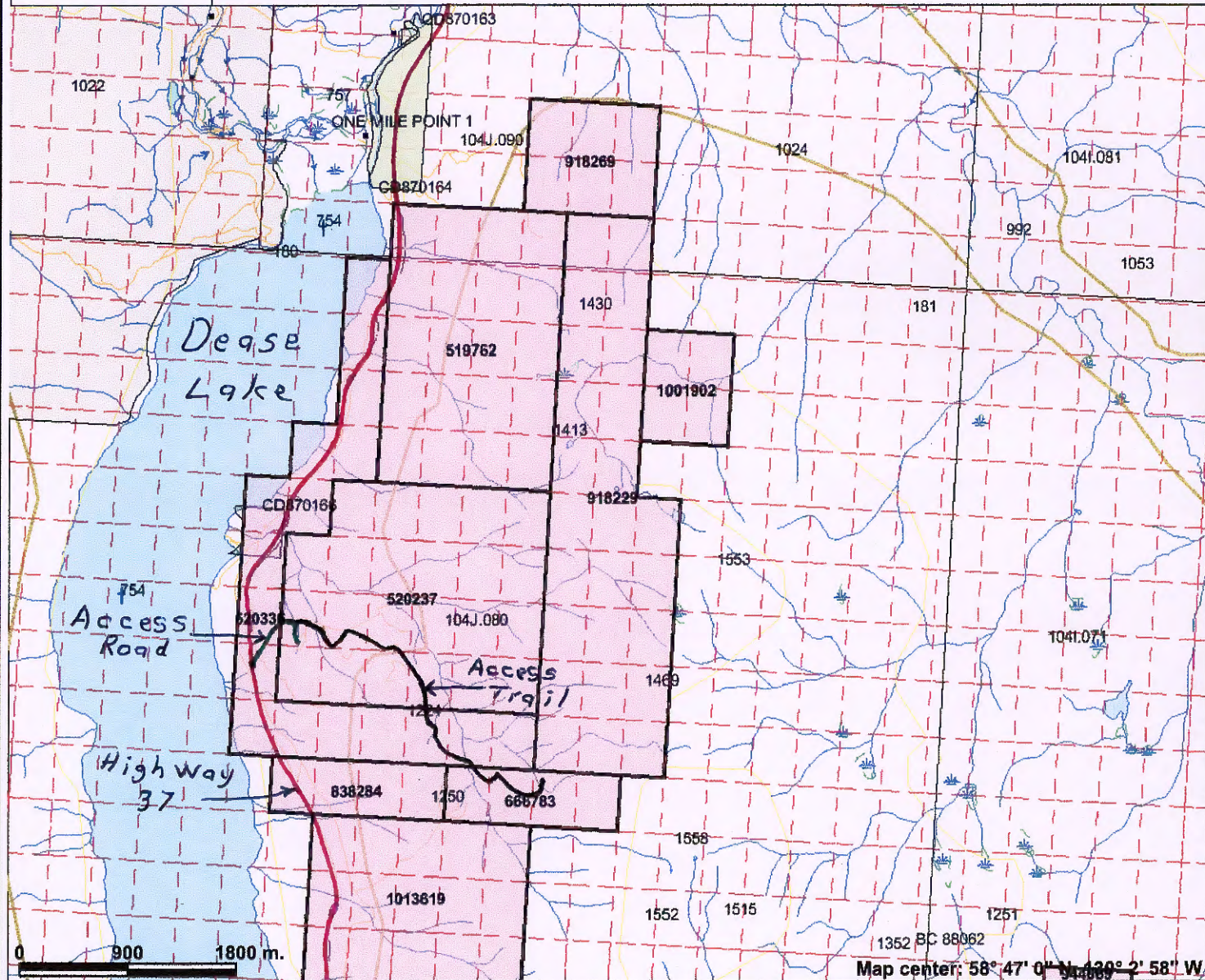
Scale: 1:9,150,657

This map is a user generated static output from an Internet mapping site and is for general reference only. Data layers that appear on this map may or may not be accurate, current, or otherwise reliable. THIS MAP IS NOT TO BE USED FOR NAVIGATION.

Map #1 of British Columbia

Map #2 Showing Jade Fever from the nearest town





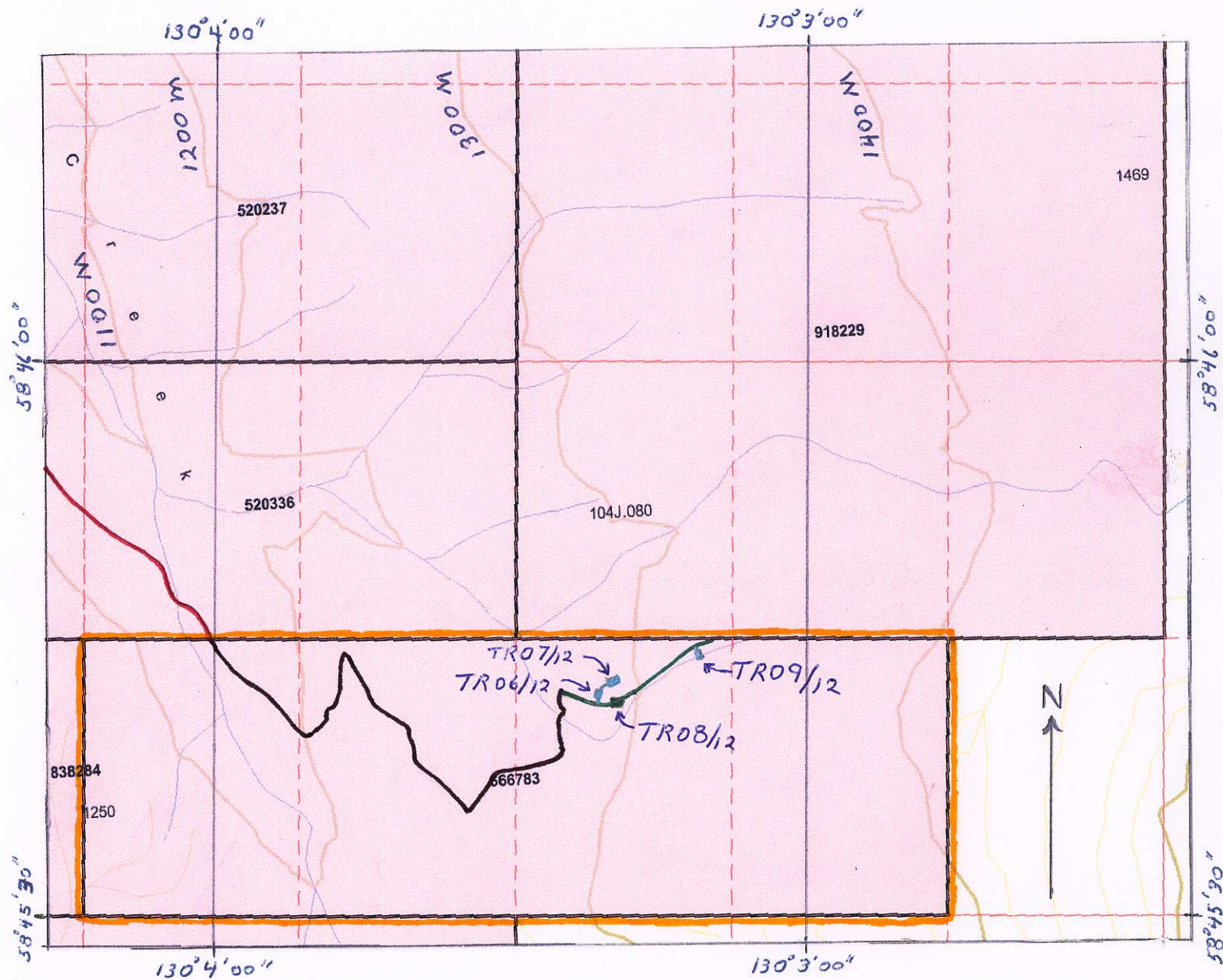
Legend

- Indian Reserves
- National Parks
- Conservancy Areas
- Parks
- Federal Transfer Lands
- MTO Grid (MTO)
- Mineral Tenure (current)
- Mineral Claim
- Mineral Lease
- Mineral Reserves (current)
- Placer Claim Designation
- Placer Lease Designation
- No Staking Reserve
- Conditional Reserve
- Release Required Reserve
- Surface Restriction
- Recreation Area
- Others
- First Nations Treaty Related Lands
- First Nations Treaty Lands
- Survey Parcels
- BCGS Grid
- Contours (1:250K)
- Contour - Index
- Contour - Intermediate
- Area of Exclusion
- Area of Indefinite Contours
- Transportation - Points (TRIM)
- Helipad
- Transportation - Lines (TRIM)

Scale: 1:50,000

This map is a user generated static output from an Internet mapping site and is for general reference only. Data layers that appear on this map may or may not be accurate, current, or otherwise reliable. THIS MAP IS NOT TO BE USED FOR NAVIGATION.

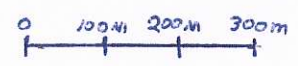
Map #3 Showing Highway 37, Access road and Access trail



Legend

- Access trail
- Exploration trail made in 2011
- Exploration trail made in 2012
- Trench made in 2012
- Exploration trail made in 2012 and Reclaimed
- Trenches made in 2012 and Reclaimed
- Claim boundaries

Scale 1:10,000



Map # 4

Showing work sites relative to the claim boundaries



Trench # TR06/12



Trench # TRO6/12 Reclaimed & marked
also 5 meters of Trail Reclaimed



Trench # TR07/12



Trench # TR07/12 Reclaimed



7 meters of Trail between TRO6/12 &
TRO7/12 Reclaimed



Trench # TR08/12



Trench # TROB/12 Filled in &
marked



Trench # TR09/12 & marked



Trench # TR09/12 Reclaimed & marked



12 meters of Trail Leading to #TR09/12
Reclaimed