

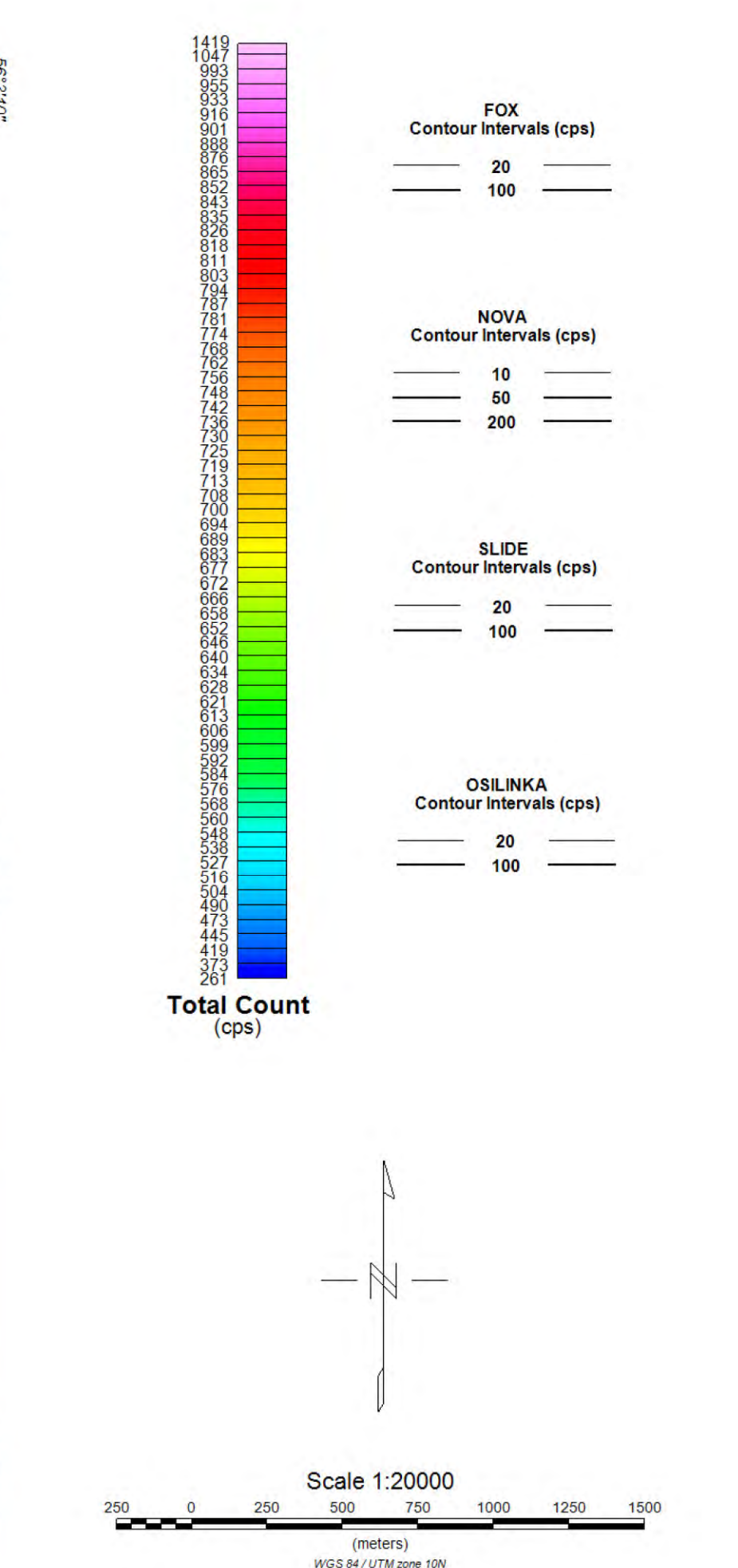
Survey Specifications:
 Base: Omnesca Camp, BC
 Date Flown: August 26 - August 27, 2012
 Aircraft: Bell 407
 Registration: C-FAVY
 Flight Line Spacing: 100 m
 Flight Line Direction: N0°E and N34°E
 Tie Line Spacing: 1000 m
 Tie Line Direction: N80°E and N122°E
 Nominal Bird Height: 45 m
 Sensor Position: 30 m below aircraft

Instrumentation:
 Data Acquisition: CMG DAS
 System: Magnetic Gradiometer, VLF-EM, Radiometrics
 Magnetometers: 3 GEM Potassium Total Field
 Vertical Separation: 2.95 m
 Horizontal Separation: 3.45 m
 Sensitivity: +/- 0.001 nT
 Heading Error: +/- 0.15 nT or less
 Gradient Tolerance: 5,000 nT/m maximum
 VLF Station # 1: Lalloure 25.2 kHz
 VLF Station # 2: Jim Creek Seattle 24.8 kHz
 VLF Sensitivity: +/- 5 pT
 Radar Altimeter: Freight TRX 3500 @10 Hz, +/- 5%
 GPS System: Novatel v4.0 @10 Hz, 1-5 m
 Base station Unit: GSM-19 @1 Hz, +/- 0.01 nT
 Spectrometer: Radiation Solution RS-500
 Crystals: 4 Downward Looking & 1 Upward Looking
 GRS Acquisition: 1024 Channel Resolution at 1Hz

Navigation:
 System: CD-GPS (Canadian differential)
 Equipment: Agilent Giza and Teal Jet Receiver
 Elevation: Freight TRX 3500 mounted in helicopter

Data Processing:
 Total Magnetic Field: Diurnal correction, tie-line, micro-leveling
 Magnetic Gradients: Heading error, micro-leveling
 VLF: DC bias, line direction

Coordinate System:
 Datum: WGS84
 Major Axis: 6378737.000
 Eccentricity: 0.0818191
 Projection: Universal Transverse Mercator Zone 10N
 Central Meridian: 123°W
 Central Scale Factor: 0.9996
 False Easting: 500,000 mE

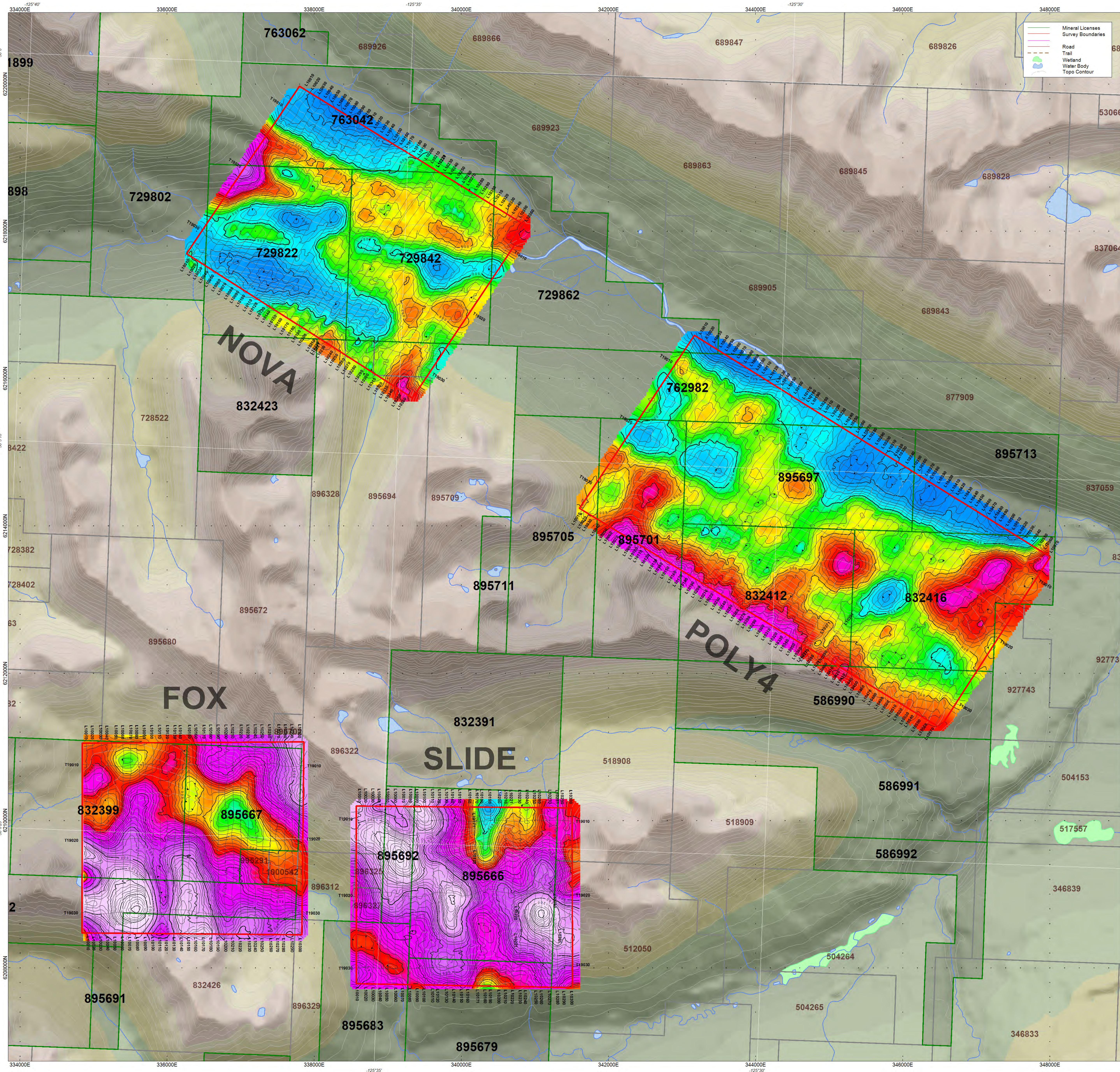


Tajiri Resources Corp.
 OGK Property, BC

Gamma Ray Spectrometry
 Corrected Total Count
 Fox, Nova, Slide, Osilinka



11500 Fifth Line
 Rockwood, Ontario, Canada, N0B 2K0
 www.cmgairborne.com



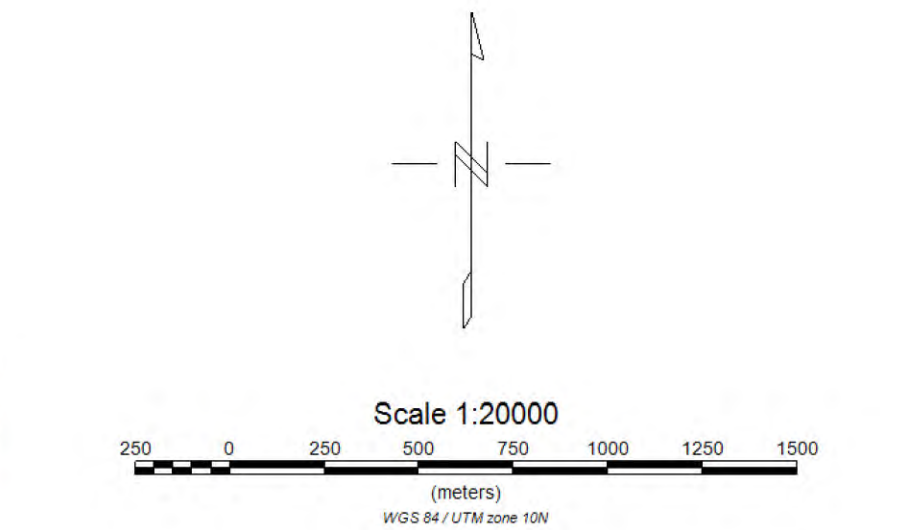
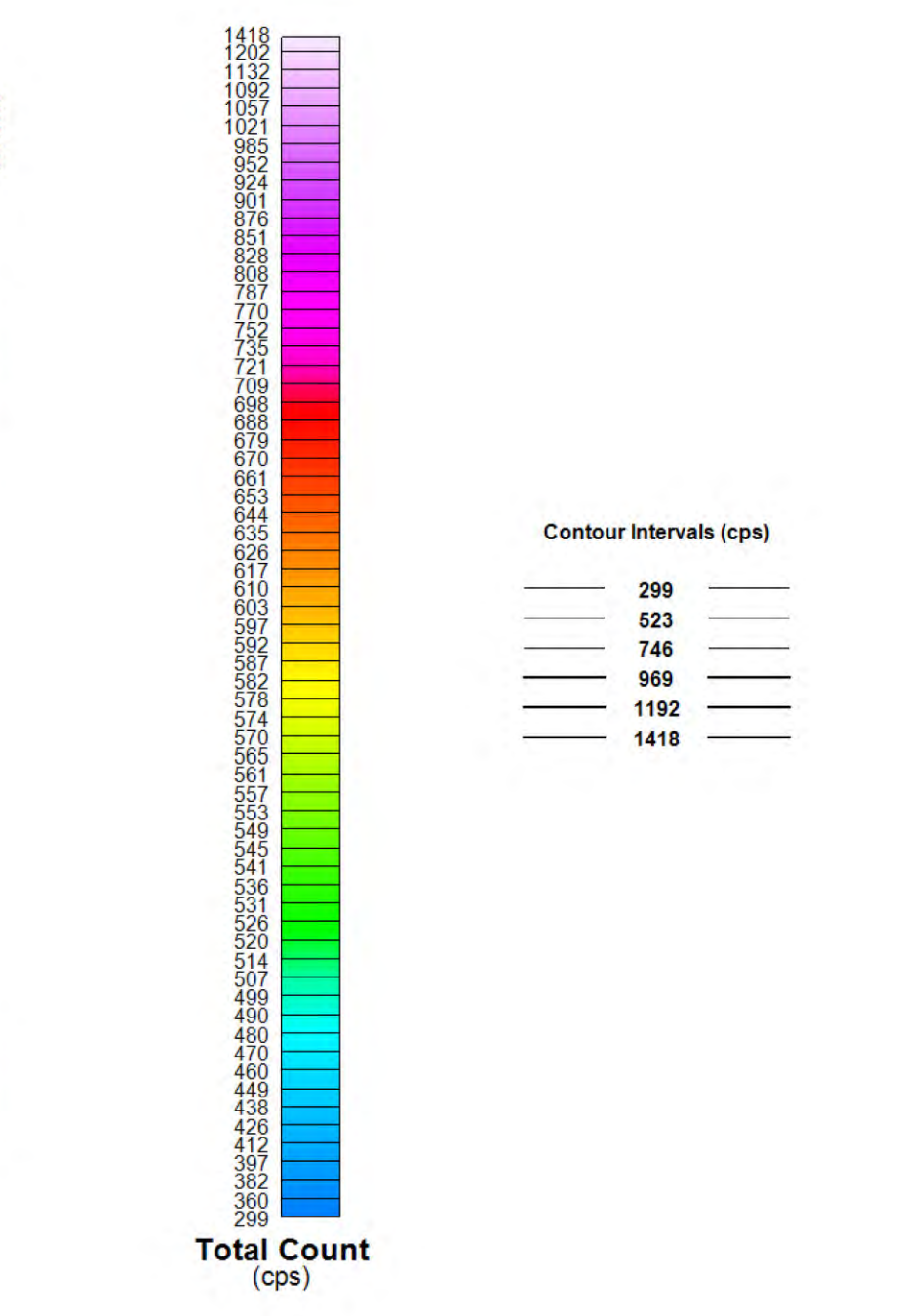
Survey Specifications:
 Base: Omineca Camp, BC
 Date Flown: August 26 - August 27, 2012
 Aircraft: Bell 407
 Registration: C-FAVY
 Flight Line Spacing: 100 m
 Flight Line Direction: N0°E and N34°E
 Tie Line Spacing: 1000 m
 Tie Line Direction: N90°E and N122°E
 Nominal Bird Height: 45 m
 Sensor Position: 30 m below aircraft

Instrumentation:
 Data Acquisition: CMG DAS
 System: Magnetic Gradiometer, VLF-EM, Radiometers
 Magnetometers: 3 GEM Potassium Total Field
 Vertical Separation: 2.95 m
 Horizontal Separation: 3.45 m
 Sensitivity: +/- 0.001 nT
 Heading Error: +/- 0.15 nT or less
 Gradient Tolerance: 5,000 nT/m maximum
 VLF Station # 1: LaMoure 25.2 kHz
 VLF Station # 2: Jim Creek Seattle 24.8 kHz
 VLF Sensitivity: +/- 5 pT
 Radar Altimeter: Freeflight TRA 3500 @10 Hz +/- 5%
 GPS System: Novatel v4.0 @10 Hz, 1-5 m
 Base station Unit: GSM-19 @1 Hz +/- 0.01 nT
 Spectrometer: Radiation Solution RS-500
 Crystals: 4 Downward Looking & 1 Upward Looking
 GRS Acquisition: 1024 Channel Resolution at 1Hz

Navigation:
 System: CD-GPS (Canadian differential)
 Equipment: AgNav Guia and Tee-Jet Receiver
 Elevation: Freeflight TRA 3500 mounted in helicopter

Data Processing:
 Total Magnetic Field: Diurnal correction, tie-line, micro-leveling
 Magnetic Gradients: Heading error, micro-leveling
 VLF: DC bias, line direction

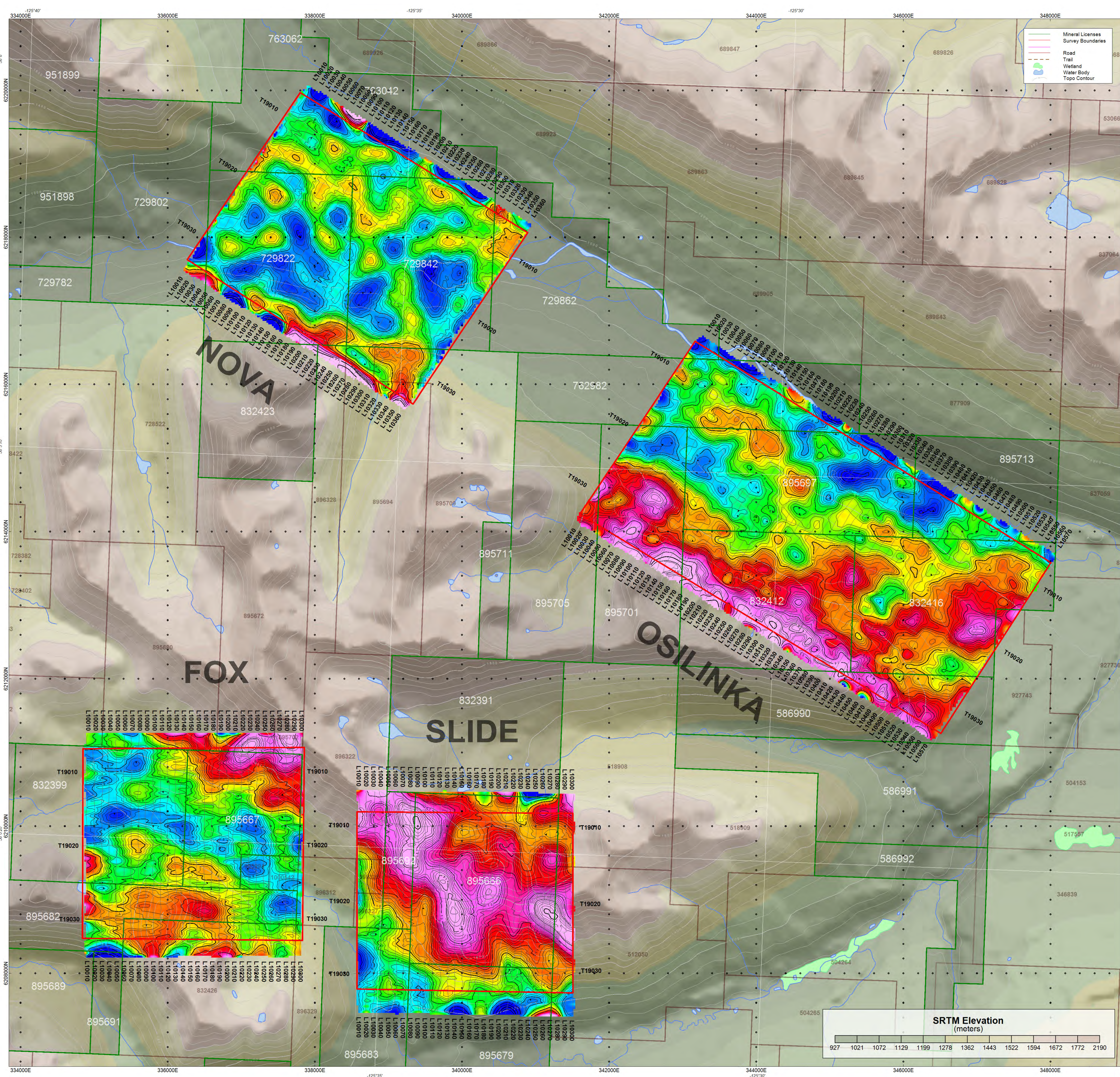
Coordinate System:
 Datum: WGS84
 Major Axis: 6378737.000
 Eccentricity: 0.81819191
 Projection: Universal Transverse Mercator Zone 10N
 Central Meridian: 123°W
 Central Scale Factor: 0.9996
 False Easting: 500,000 mE



Tajiri Resources Corporation
 Oatlinka, OGG Property, BC
**Gamma Ray Spectrometry
 Corrected Total Count**
 Fox, Nova, Slide, Poly4



11500 Fifth Line
 Rockwood, Ontario, Canada, N0B 2K0
 www.cmgairborne.com



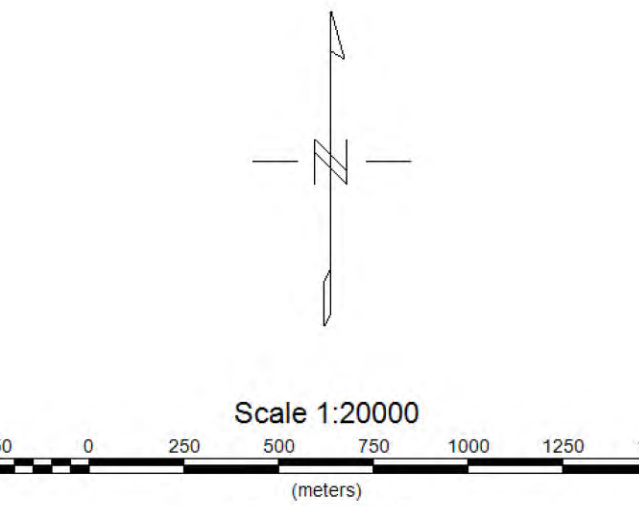
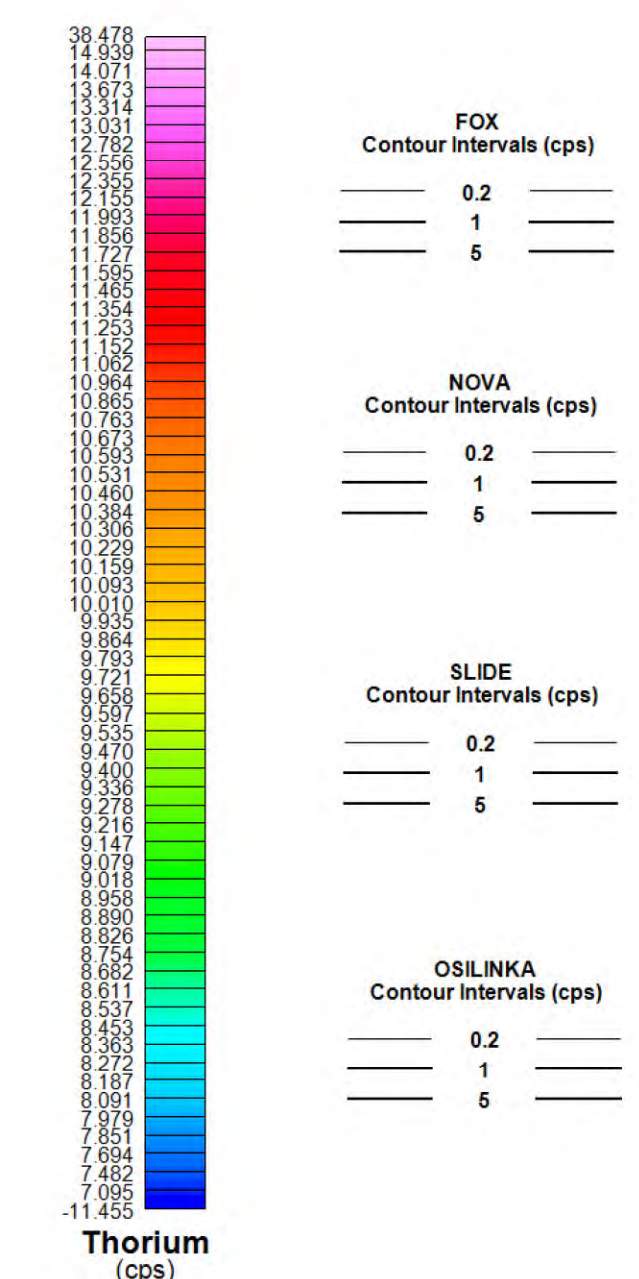
Survey Specifications:
 Base: Omineca Camp, BC
 Date Flown: August 26 - August 27, 2012
 Aircraft: Bell 407
 Registration: C-FAVY
 Flight Line Spacing: 100 m
 Flight Line Direction: N0°E and N34°E
 Tie Line Spacing: 1000 m
 Tie Line Direction: N50°E and N122°E
 Nominal Bird Height: 45 m
 Sensor Position: 30 m below aircraft

Instrumentation:
 Data Acquisition: CMG DAS
 System: Magnetic Gradiometer, VLF-EM, Radiometrics
 Magnetometers: 3 GEM Potassium Total Field
 Vertical Separation: 2.95 m
 Horizontal Separation: 3.45 m
 Sensitivity: +/- 0.001 nT
 Heading Error: +/- 0.15 nT or less
 Gradient Tolerance: 5,000 nT/m maximum
 VLF Station # 1: LaMoure 25.2 kHz
 VLF Station # 2: Jim Creek Seattle 24.8 kHz
 VLF Sensitivity: +/- 5 pT
 Radar Altimeter: Freight TRS 3500 @10 Hz +/- 5%
 GPS System: Novatel v4.0 @10 Hz, 1-5 m
 Base station Unit: GSM-19 @1 Hz +/- 0.01 nT
 Spectrometer: Radiation Solution RS-500
 Crystals: 4 Downward Looking & 1 Upward Looking
 ORS Acquisition: 1024 Channel Resolution at 1Hz

Navigation:
 System: CD-GPS (Canadian differential)
 Equipment: AgNav Guia and Tee-Jet Receiver
 Elevation: Freight TRS 3500 mounted in helicopter

Data Processing:
 Total Magnetic Field: Diurnal correction, tie-line, micro-leveling
 Magnetic Gradients: Heading error, micro-leveling
 VLF: DC bias, line direction

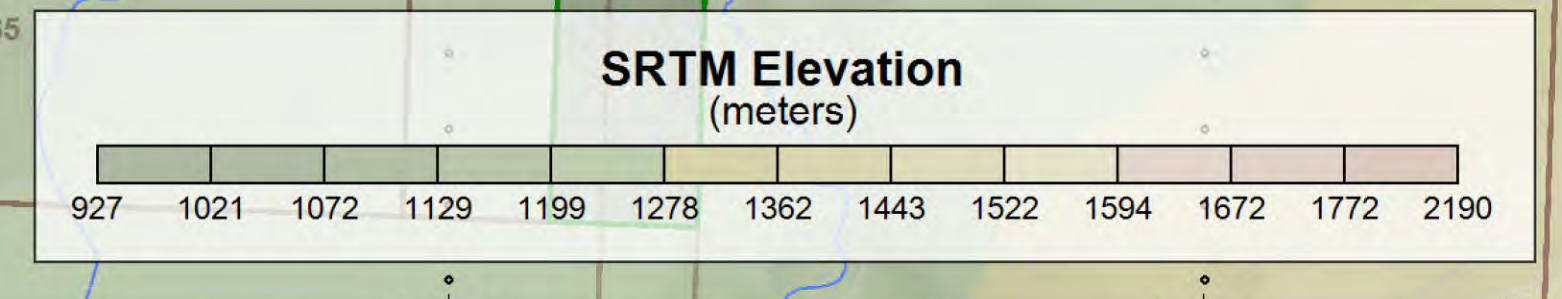
Coordinate System:
 Datum: WGS84
 Major Axis: 6378737.000
 Eccentricity: 0.81819191
 Projection: Universal Transverse Mercator Zone 10N
 Central Meridian: 123°W
 Central Scale Factor: 0.9996
 False Easting: 500,000 mE

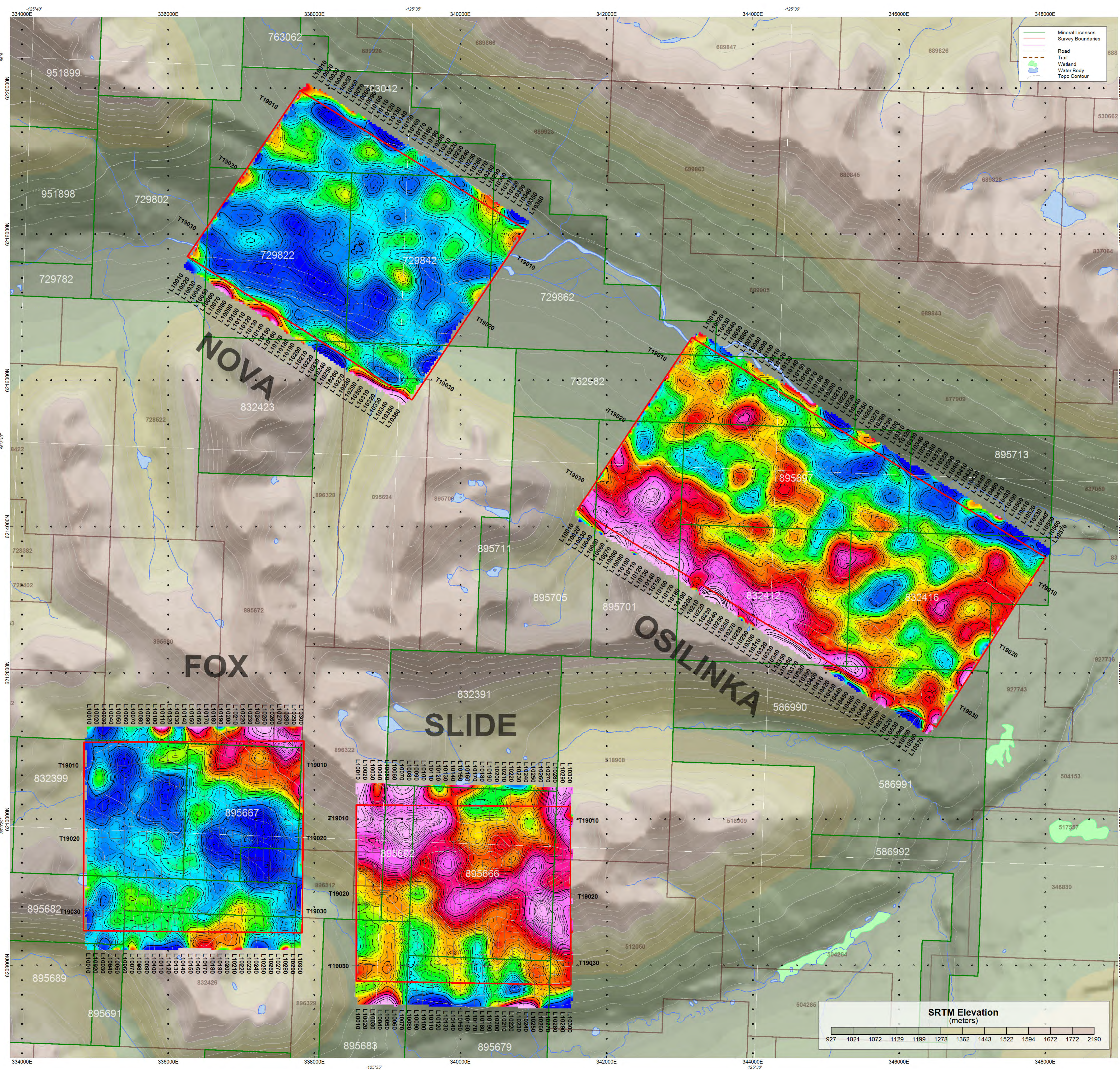


Tajiri Resources Corp.
 OGK Property, BC
**Gamma Ray Spectrometry
 Thorium Count**
 Fox, Nova, Slide, Osilinka



11500 Fifth Line
 Rockwood, Ontario, Canada, N0B 2K0
 www.cmgairborne.com





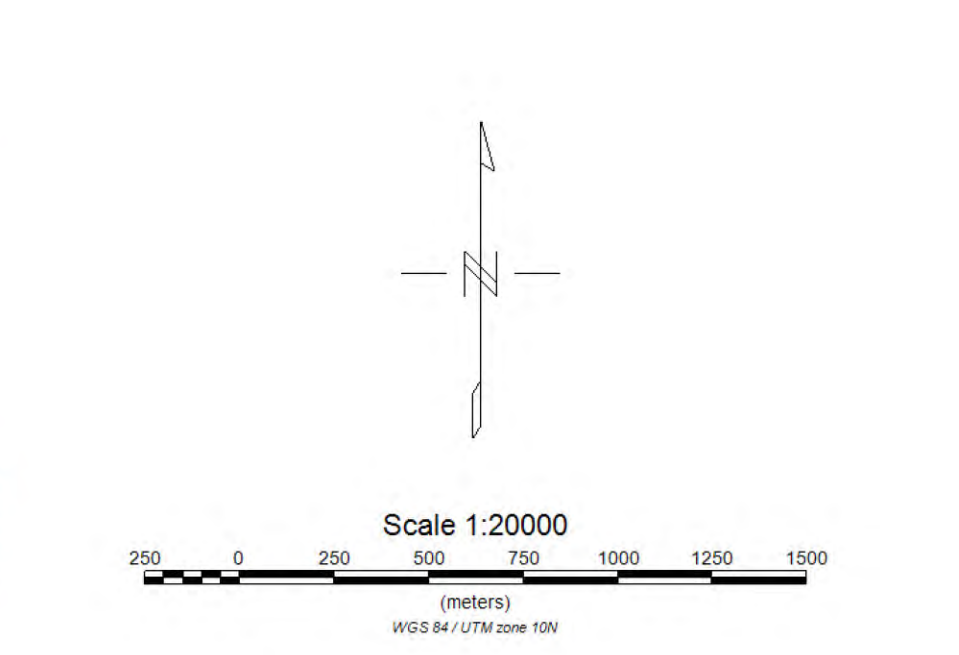
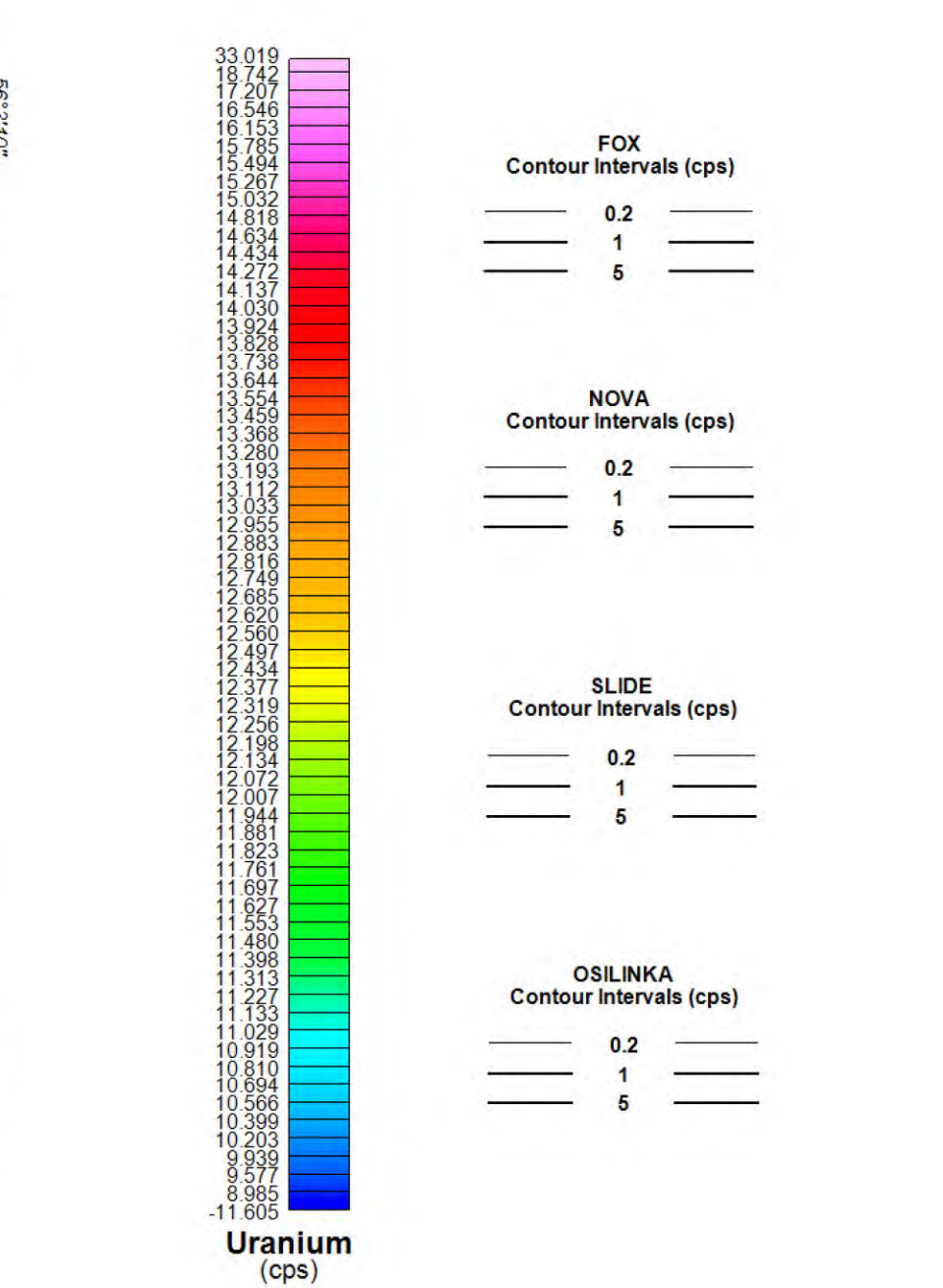
Survey Specifications:
 Base: Omnesca Camp, BC
 Date Flown: August 26 - August 27, 2012
 Aircraft: Bell 407
 Registration: C-FAVY
 Flight Line Spacing: 100 m
 Flight Line Direction: N0°E and N34°E
 Tie Line Spacing: 1000 m
 Tie Line Direction: N90°E and N122°E
 Nominal Bird Height: 45 m
 Sensor Position: 30 m below aircraft

Instrumentation:
 Data Acquisition: CMG DAS
 System: Magnetic Gradiometer, VLF-EM, Radiometrics
 Magnetometers: 3 GEM Potassium Total Field
 Vertical Separation: 2.95 m
 Horizontal Separation: 3.45 m
 Sensitivity: +/- 0.001 nT
 Heading Error: +/- 0.15 nT or less
 Gradient Tolerance: 5,000 nT/m maximum
 VLF Station # 1: LaLoure 25.2 kHz
 VLF Station # 2: Jim Creek Seattle 24.8 kHz
 VLF Sensitivity: +/- 5 pT
 Radar Altimeter: Freight TRX 3500 @10 Hz, +/- 5%
 GPS System: Novatel v4.0 @10 Hz, 1.5 m
 Base station Unit: GSM-19 @1 Hz, +/- 0.01 nT
 Spectrometer: Radiation Solution RS-500
 Crystals: 4 Downward Looking & 1 Upward Looking
 GRS Acquisition: 1024 Channel Resolution at 1Hz

Navigation:
 System: CD-GPS (Canadian differential)
 Equipment: AgNav Gula and Tee-Jet Receiver
 Elevation: Freight TRX 3500 mounted in helicopter

Data Processing:
 Total Magnetic Field: Diurnal correction, tie-line, micro-leveling
 Magnetic Gradients: Heading error, micro-leveling
 VLF: DC bias, line direction

Coordinate System:
 Datum: WGS84
 Major Axis: 6378737.000
 Eccentricity: 0.81819191
 Projection: Universal Transverse Mercator Zone 10N
 Central Meridian: 123°W
 Central Scale Factor: 0.9996
 False Easting: 500,000 mE



Tajiri Resources Corp.
 OGG Property, BC

**Gamma Ray Spectrometry
 Uranium Count**
 Fox, Nova, Slide, Osilinka



11600 Fifth Line
 Rockwood, Ontario, Canada, N0B 2K0
 www.cmgairborne.com