

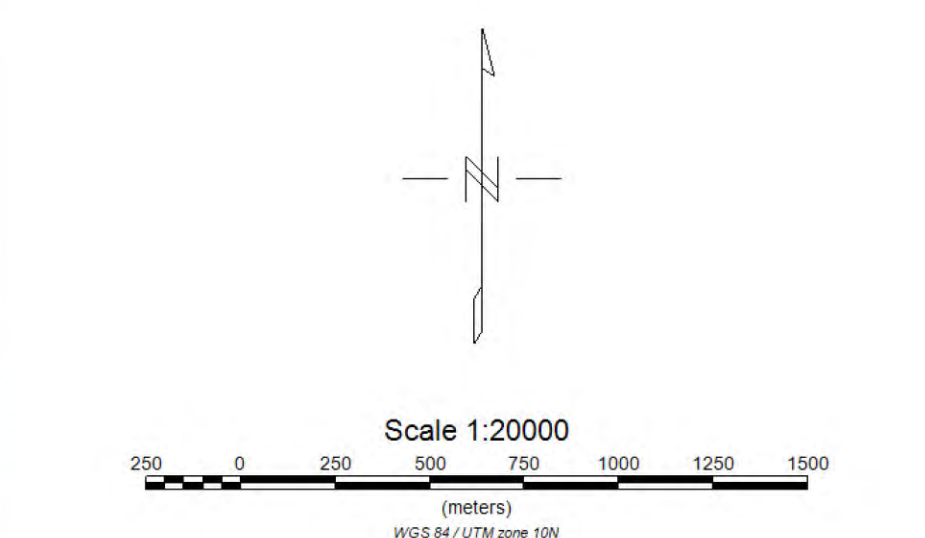
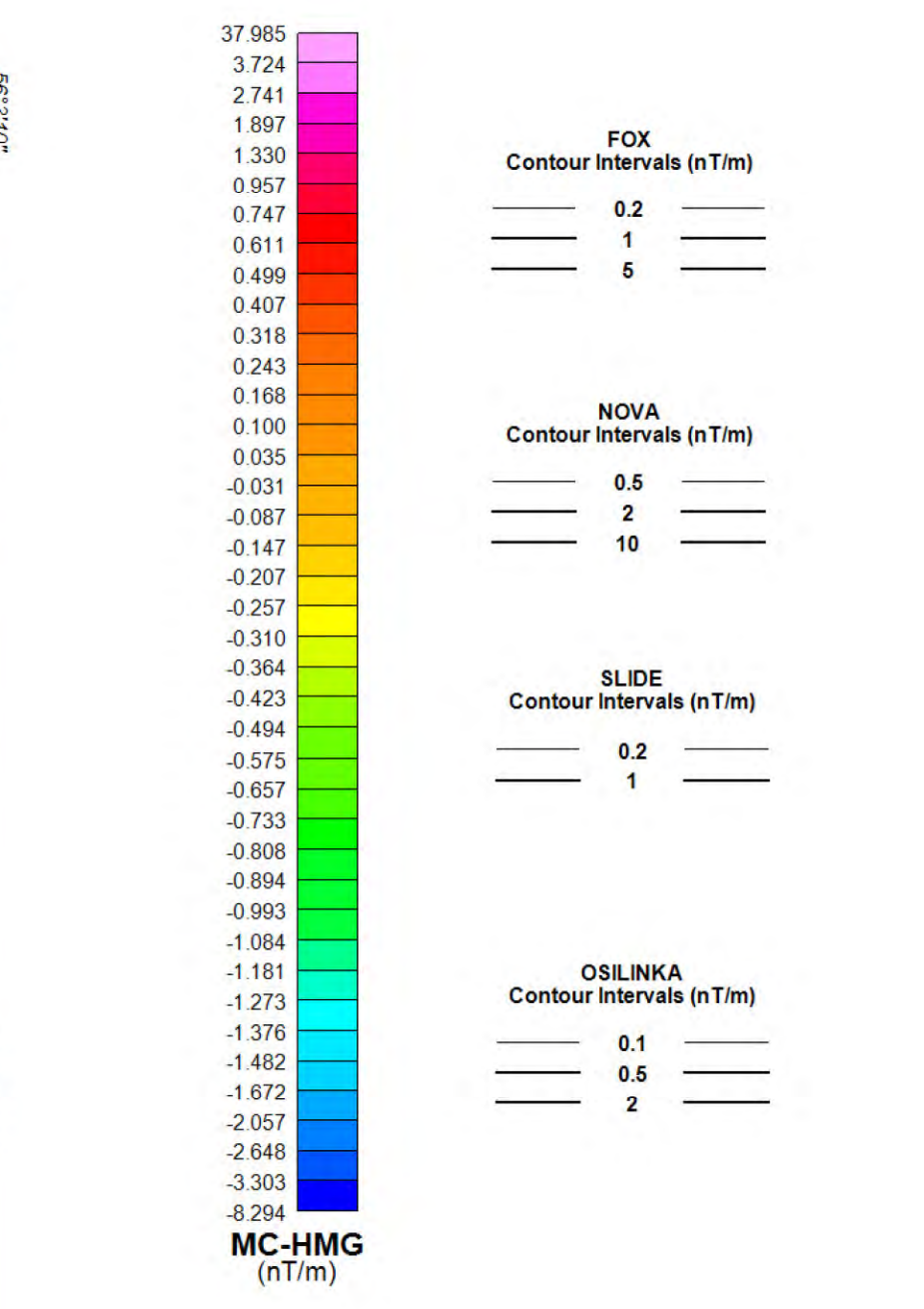
**Survey Specifications:**  
 Base: Omineca Camp, BC  
 Date Flown: August 26 - August 27, 2012  
 Aircraft: Bell 407  
 Registration: C-FAVY  
 Flight Line Spacing: 100 m  
 Flight Line Direction: N0°E and N34°E  
 Tie Line Spacing: 1000 m  
 Tie Line Direction: N80°E and N122°E  
 Nominal Bird Height: 45 m  
 Sensor Position: 30 m below aircraft

**Instrumentation:**  
 Data Acquisition: CMG DAS  
 System: Magnetic Gradiometer, VLF-EM, Radiometrics  
 Magnetometers: 3 GEM Potassium Total Field  
 Vertical Separation: 2.95 m  
 Horizontal Separation: 3.45 m  
 Sensitivity: +/- 0.001 nT  
 Heading Error: +/- 0.15 nT or less  
 Gradient Tolerance: 5,000 nT/m maximum  
 VLF Station # 1: Laloure 25.2 kHz  
 VLF Station # 2: Jim Creek Seattle 24.8 kHz  
 VLF Sensitivity: +/- 5 pT  
 Radar Altimeter: Freight TRX 3500 @ 10 Hz, +/- 5%  
 GPS System: Novatel v4.0 @ 10 Hz, 1-5 m  
 Base station Unit: GSM-19 @ 1 Hz, +/- 0.01 nT  
 Spectrometer: Radiation Solution RS-500  
 Crystals: 4 Downward Looking & 1 Upward Looking  
 GRS Acquisition: 1024 Channel Resolution at 1Hz

**Navigation:**  
 System: CD-GPS (Canadian differential)  
 Equipment: Agilent/Ga and Trimble Receiver  
 Elevation: Freight TRX 3500 mounted in helicopter

**Data Processing:**  
 Total Magnetic Field: Diurnal correction, tie-line, micro-leveling  
 Magnetic Gradients: Heading error, micro-leveling  
 VLF: DC bias, line direction

**Coordinate System:**  
 Datum: WGS84  
 Major Axis: 6378737.000  
 Eccentricity: 0.81819191  
 Projection: Universal Transverse Mercator Zone 10N  
 Central Meridian: 123°W  
 Central Scale Factor: 0.9996  
 False Easting: 500,000 mE



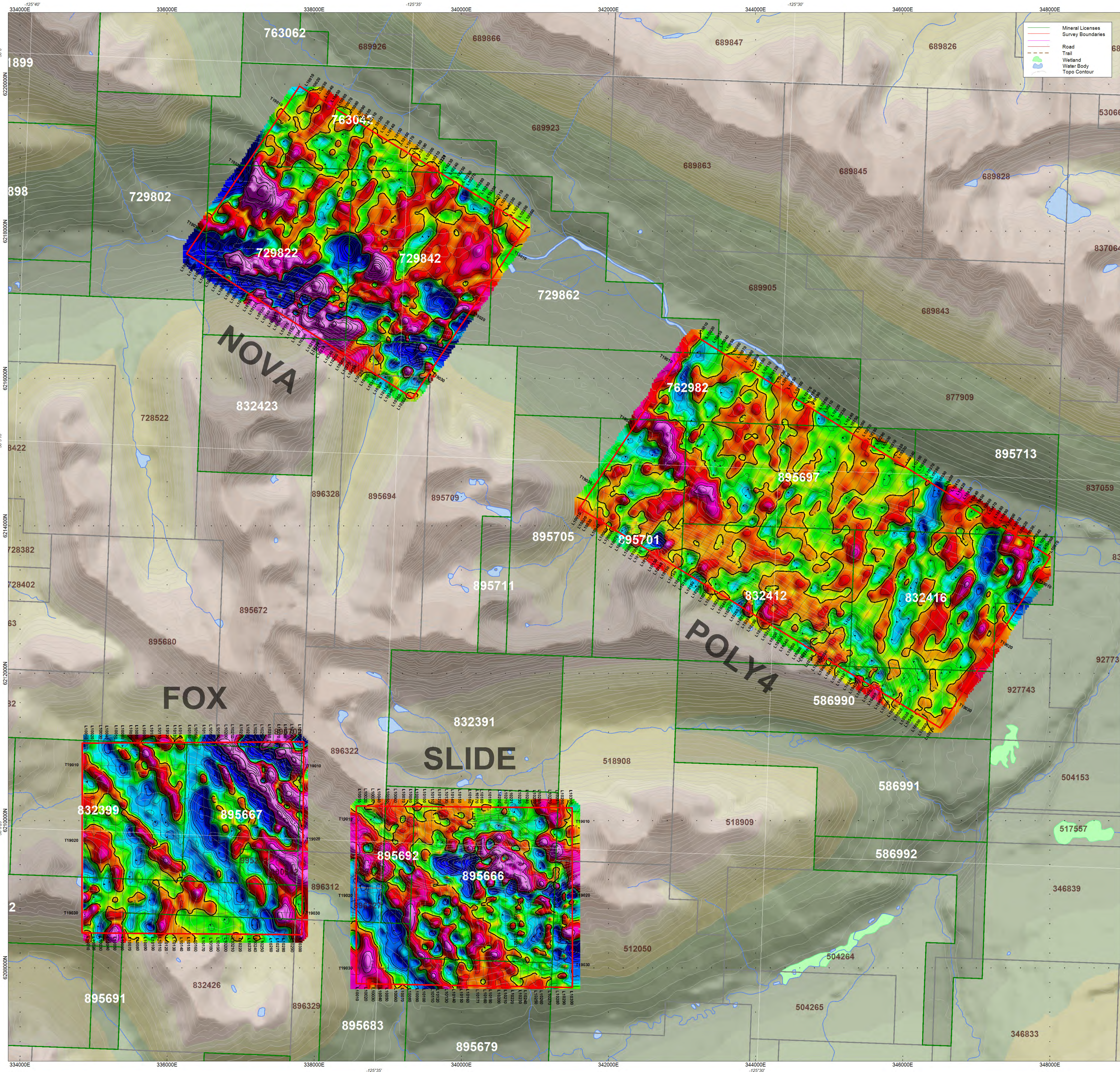
Tajiri Resources Corp.  
 OGK Property, BC

Magnetic Gradient  
 Measured Cross-Line  
 Fox, Nova, Slide, Osilinka



11500 Fifth Line  
 Rockwood, Ontario, Canada, N0B 2K0  
 www.cmgairborne.com

BC Geological Survey  
 Assessment Report  
 33515d



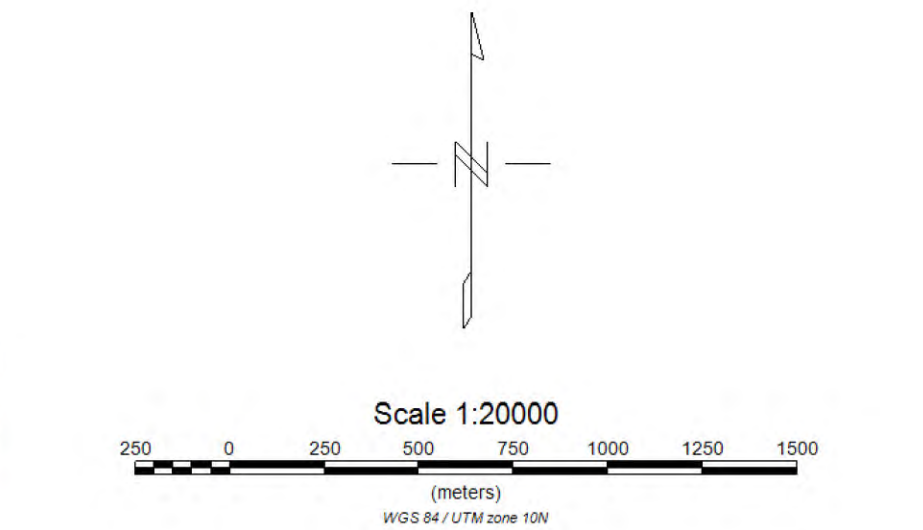
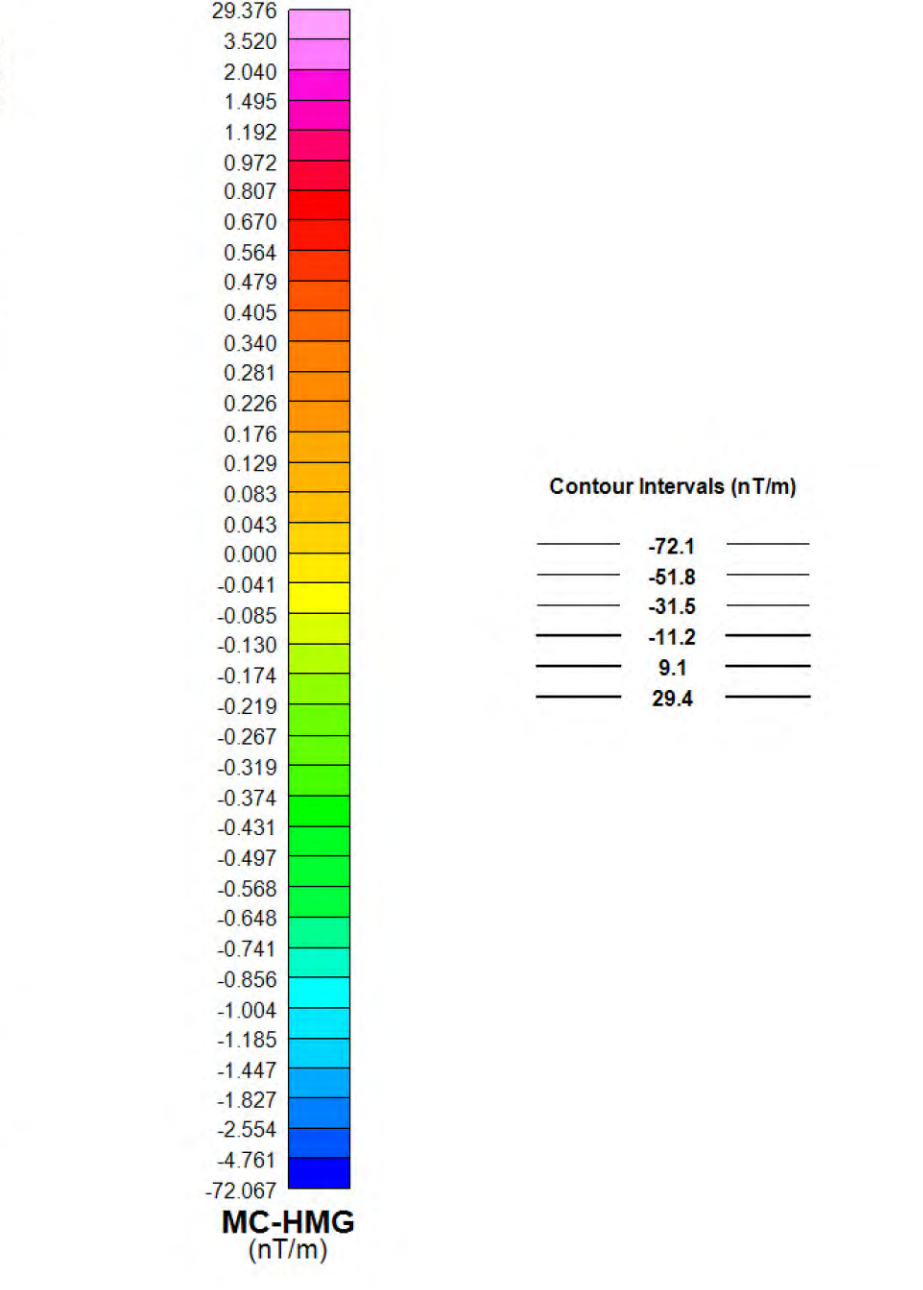
**Survey Specifications:**  
 Base: Omineca Camp, BC  
 Date Flown: August 26 - August 27, 2012  
 Aircraft: Bell 407  
 Registration: C-FAVY  
 Flight Line Spacing: 100 m  
 Flight Line Direction: N0°E and N34°E  
 Tie Line Spacing: 1000 m  
 Tie Line Direction: N90°E and N122°E  
 Nominal Bird Height: 45 m  
 Sensor Position: 30 m below aircraft

**Instrumentation:**  
 Data Acquisition: CMG DAS  
 System: Magnetic Gradiometer, VLF-EM, Radiometers  
 Magnetometers: 3 GEM Potassium Total Field  
 Vertical Separation: 2.95 m  
 Horizontal Separation: 3.45 m  
 Sensitivity: +/- 0.001 nT  
 Heading Error: +/- 0.15 nT or less  
 Gradient Tolerance: 5,000 nT/m maximum  
 VLF Station # 1: LaMoire 25.2 kHz  
 VLF Station # 2: Jim Creek Seattle 24.8 kHz  
 VLF Sensitivity: +/- 5 pT  
 Radar Altimeter: Freeflight TRA 3500 @10 Hz +/- 5%  
 GPS System: Novatel v4.0 @10 Hz, 1-5 m  
 Base station Unit: GSM-19 @1 Hz +/- 0.01 nT  
 Spectrometer: Radiation Solution RS-500  
 Crystals: 4 Downward Looking & 1 Upward Looking  
 GRS Acquisition: 1024 Channel Resolution at 1Hz

**Navigation:**  
 System: CD-GPS (Canadian differential)  
 Equipment: AgNav Guia and Tee-Jet Receiver  
 Elevation: Freeflight TRA 3500 mounted in helicopter

**Data Processing:**  
 Total Magnetic Field: Diurnal correction, tie-line, micro-leveling  
 Magnetic Gradients: Heading error, micro-leveling  
 VLF: DC bias, line direction

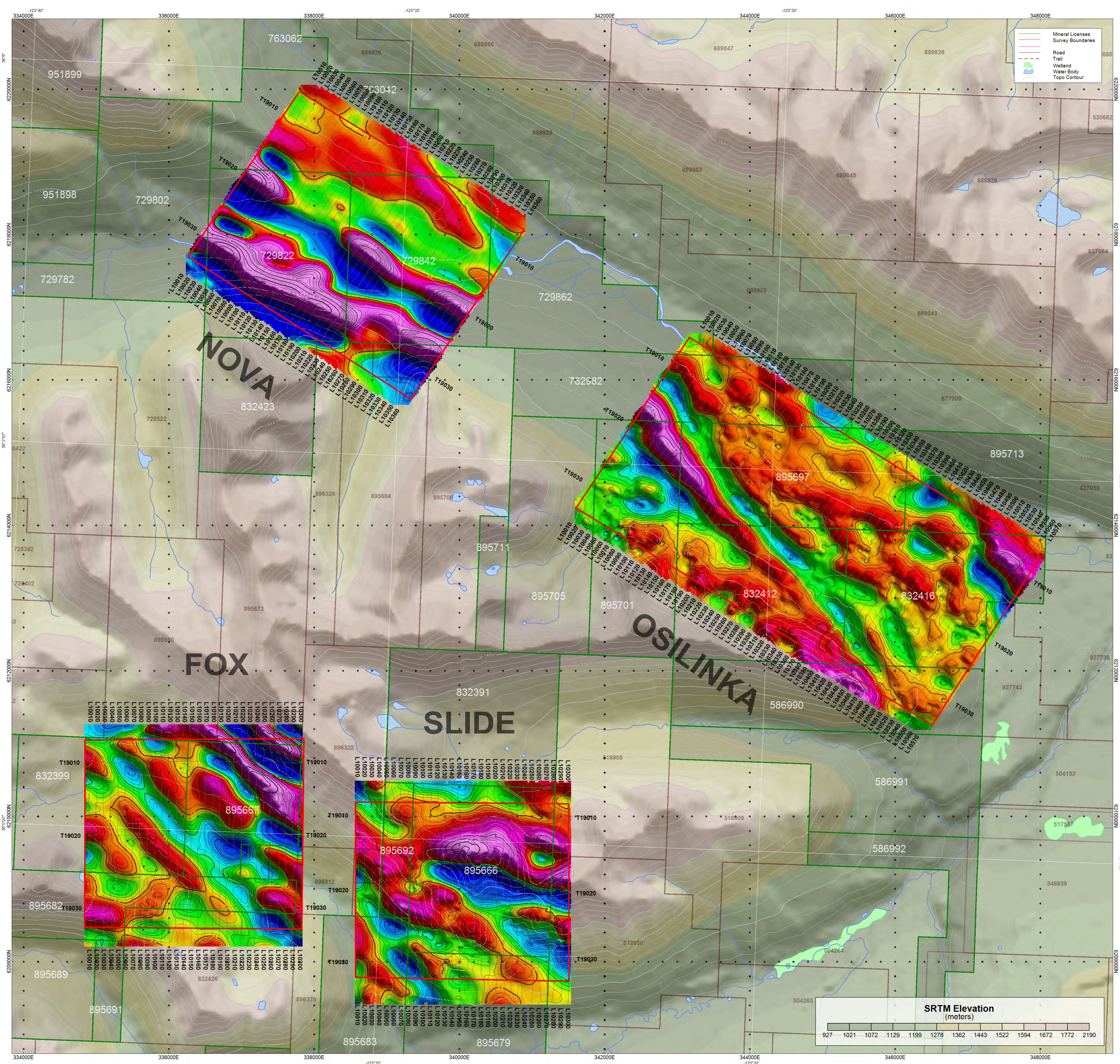
**Coordinate System:**  
 Datum: WGS84  
 Major Axis: 6378737.000  
 Eccentricity: 0.81819191  
 Projection: Universal Transverse Mercator Zone 10N  
 Central Meridian: 123°W  
 Central Scale Factor: 0.9996  
 False Easting: 500,000 mE



Tajiri Resources Corporation  
 Osoinka, OGG Property, BC  
**Magnetic Gradient  
 Measured Cross-Line**  
 Fox, Nova, Slide, Poly4



11500 Fifth Line  
 Rockwood, Ontario, Canada, N0B 2K0  
 www.cmgairborne.com



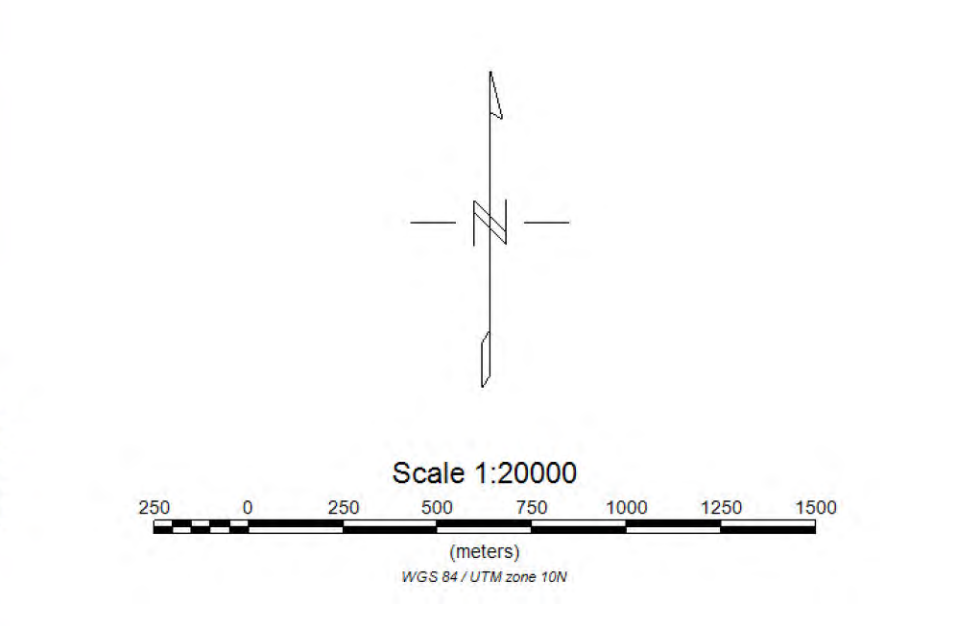
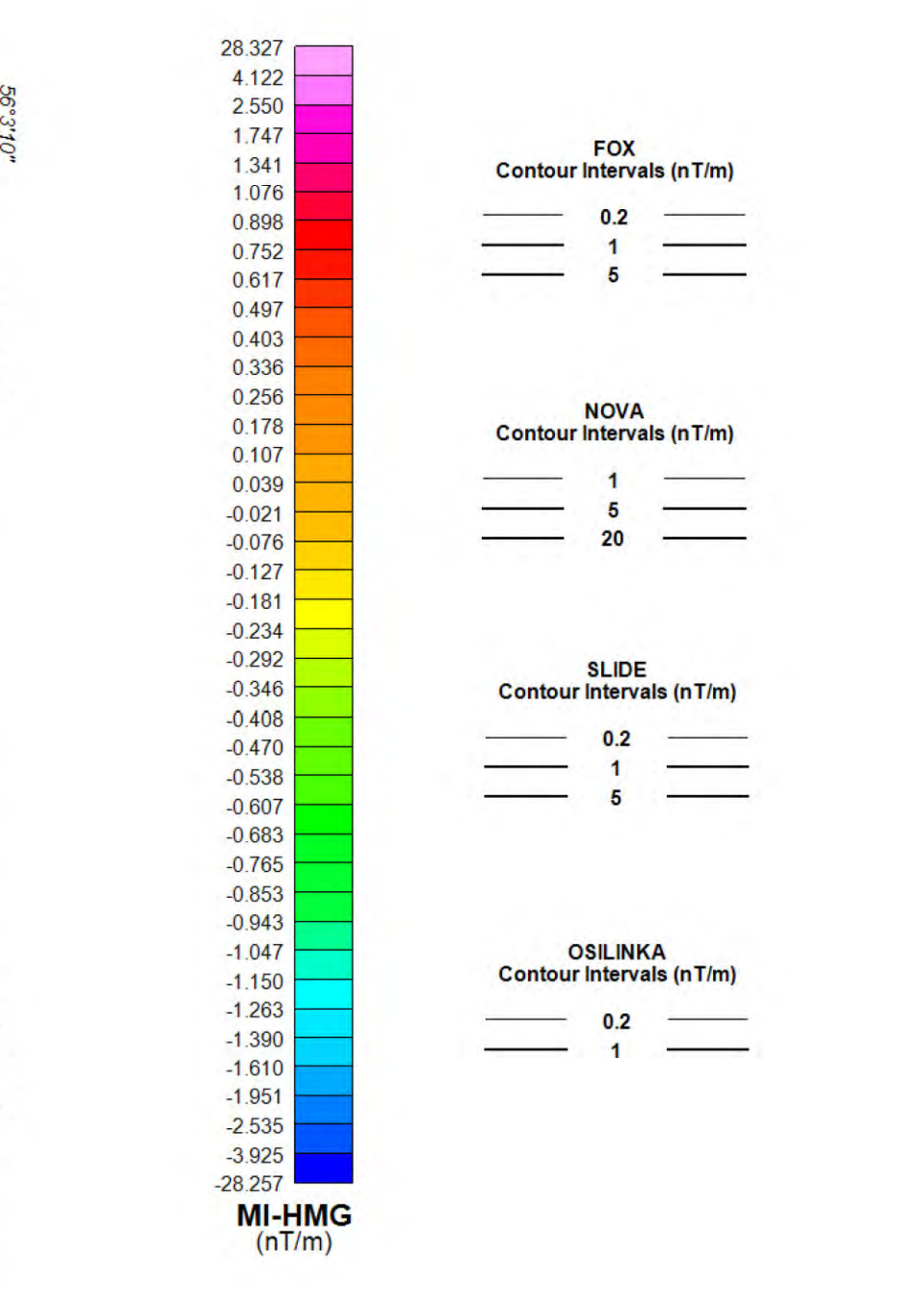
**Survey Specifications:**  
 Base: Omineca Camp, BC  
 Date Flown: August 28 - August 27, 2012  
 Aircraft: Bell 407  
 Registration: C-FAVY  
 Flight Line Spacing: 100 m  
 Flight Line Direction: N90°E and N122°E  
 Tie Line Spacing: 1000 m  
 Tie Line Direction: N90°E and N122°E  
 Nominal Bird Height: 45 m  
 Sensor Position: 30 m below aircraft

**Instrumentation:**  
 Data Acquisition: CMG DAS  
 System: Magnetic Gradiometer, VLF-EM, Radiometrics  
 Magnetometers: 3 GEM Potassium Total Field  
 Vertical Separation: 2.95 m  
 Horizontal Separation: 3.45 m  
 Sensitivity: +/- 0.001 nT  
 Heading Error: +/- 0.15 nT or less  
 Gradient Tolerance: 5,000 nT/m maximum  
 VLF Station # 1: LaMoire 25.2 kHz  
 VLF Station # 2: Jim Creek Seattle 24.8 kHz  
 VLF Sensitivity: +/- 5 pT  
 Radar Altimeter: Freeflight TRA 3500 @ 10 Hz, +/- 5%  
 GPS System: Novatel v4.0 @ 10 Hz, 1-5 m  
 Base station Unit: GSM-19 @ 1 Hz, +/- 0.01 nT  
 Spectrometer: Radiation Solution RS-500  
 Crystals: 4 Downward Looking & 1 Upward Looking  
 GRS Acquisition: 1024 Channel Resolution at 1Hz

**Navigation:**  
 System: CD-GPS (Canadian differential)  
 Equipment: AgNav Guia and Tee-Jet Receiver  
 Elevation: Freeflight TRA 3500 mounted in helicopter

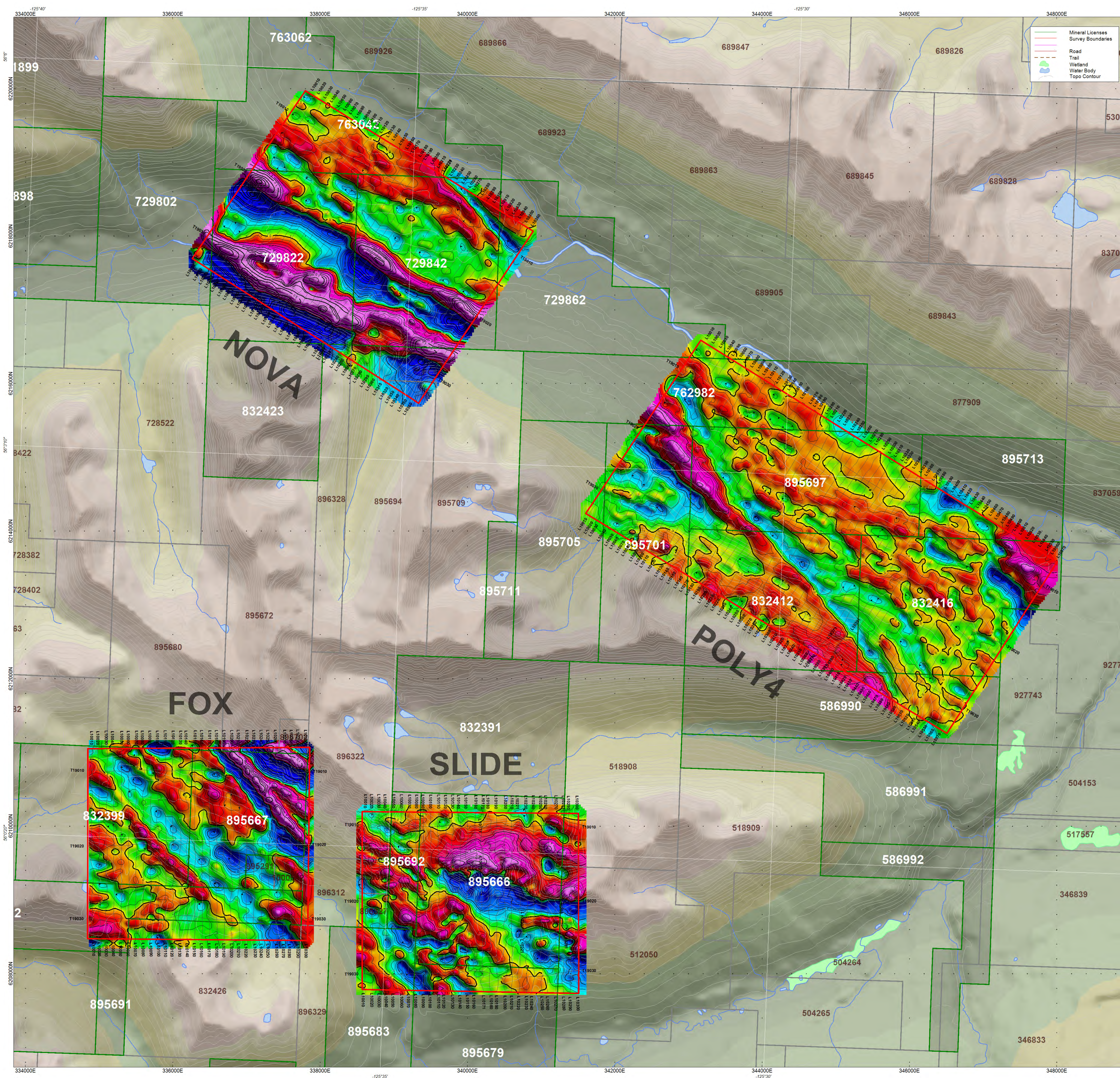
**Data Processing:**  
 Total Magnetic Field: Diurnal correction, tie-line, micro-leveling  
 Magnetic Gradients: Heading error, micro-leveling  
 VLF: DC bias, line direction

**Coordinate System:**  
 Datum: WGS84  
 Major Axis: 6378737.000  
 Eccentricity: 0.81819191  
 Projection: Universal Transverse Mercator Zone 10N  
 Central Meridian: 123°W  
 Central Scale Factor: 0.9996  
 False Easting: 500,000 mE



**Tajiri Resources Corp.**  
 OGC Property, BC  
**Magnetic Gradient  
 Measured In-Line  
 Fox, Nova, Slide, Osilinka**





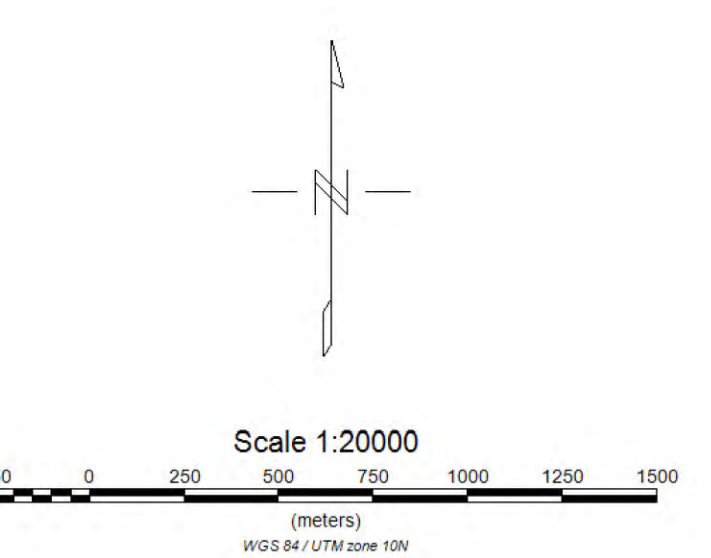
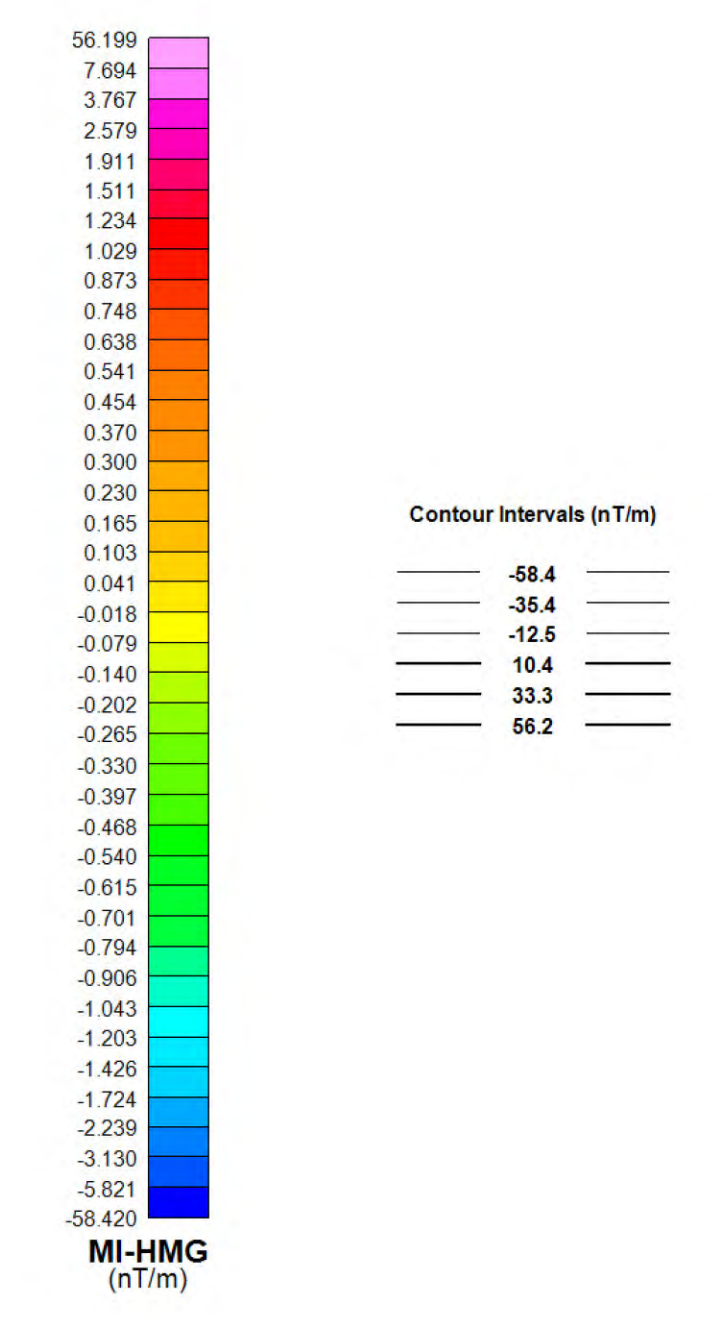
**Survey Specifications:**  
 Base: Omineca Camp, BC  
 Date Flown: August 26 - August 27, 2012  
 Aircraft: Bell 407  
 Registration: C-FAVY  
 Flight Line Spacing: 100 m  
 Flight Line Direction: N0°E and N34°E  
 Tie Line Spacing: 1000 m  
 Tie Line Direction: N90°E and N122°E  
 Nominal Bird Height: 45 m  
 Sensor Position: 30 m below aircraft

**Instrumentation:**  
 Data Acquisition: CMG DAS  
 System: Magnetic Gradiometer, VLF-EM, Radiometers  
 Magnetometers: 3 GEM Potassium Total Field  
 Vertical Separation: 2.95 m  
 Horizontal Separation: 3.45 m  
 Sensitivity: +/- 0.001 nT  
 Heading Error: +/- 0.15 nT or less  
 Gradient Tolerance: 5,000 nT/m maximum  
 VLF Station # 1: LaMoure 25.2 kHz  
 VLF Station # 2: Jim Creek Seattle 24.8 kHz  
 VLF Sensitivity: +/- 5 pT  
 Radar Altimeter: Freeflight TRA 3500 @10 Hz +/- 5%  
 GPS System: Novatel v4.0 @10 Hz, 1-5 m  
 Base station Unit: GSM-19 @1 Hz +/- 0.01 nT  
 Spectrometer: Radiation Solution RS-500  
 Crystals: 4 Downward Looking & 1 Upward Looking  
 GRS Acquisition: 1024 Channel Resolution at 1Hz

**Navigation:**  
 System: CD-GPS (Canadian differential)  
 Equipment: AgNav Guia and Tee-Jet Receiver  
 Elevation: Freeflight TRA 3500 mounted in helicopter

**Data Processing:**  
 Total Magnetic Field: Diurnal correction, tie-line, micro-leveling  
 Magnetic Gradients: Heading error, micro-leveling  
 VLF: DC bias, line direction

**Coordinate System:**  
 Datum: WGS84  
 Major Axis: 6378737.000  
 Eccentricity: 0.81819191  
 Projection: Universal Transverse Mercator Zone 10N  
 Central Meridian: 123°W  
 Central Scale Factor: 0.9996  
 False Easting: 500,000 mE



Tajiri Resources Corporation  
 Oshinka, OGG Property, BC  
**Magnetic Gradient  
 Measured In-Line**  
 Fox, Nova, Slide, Poly4



11500 Fifth Line  
 Rockwood, Ontario, Canada, N0B 2K0  
 www.cmgairborne.com