

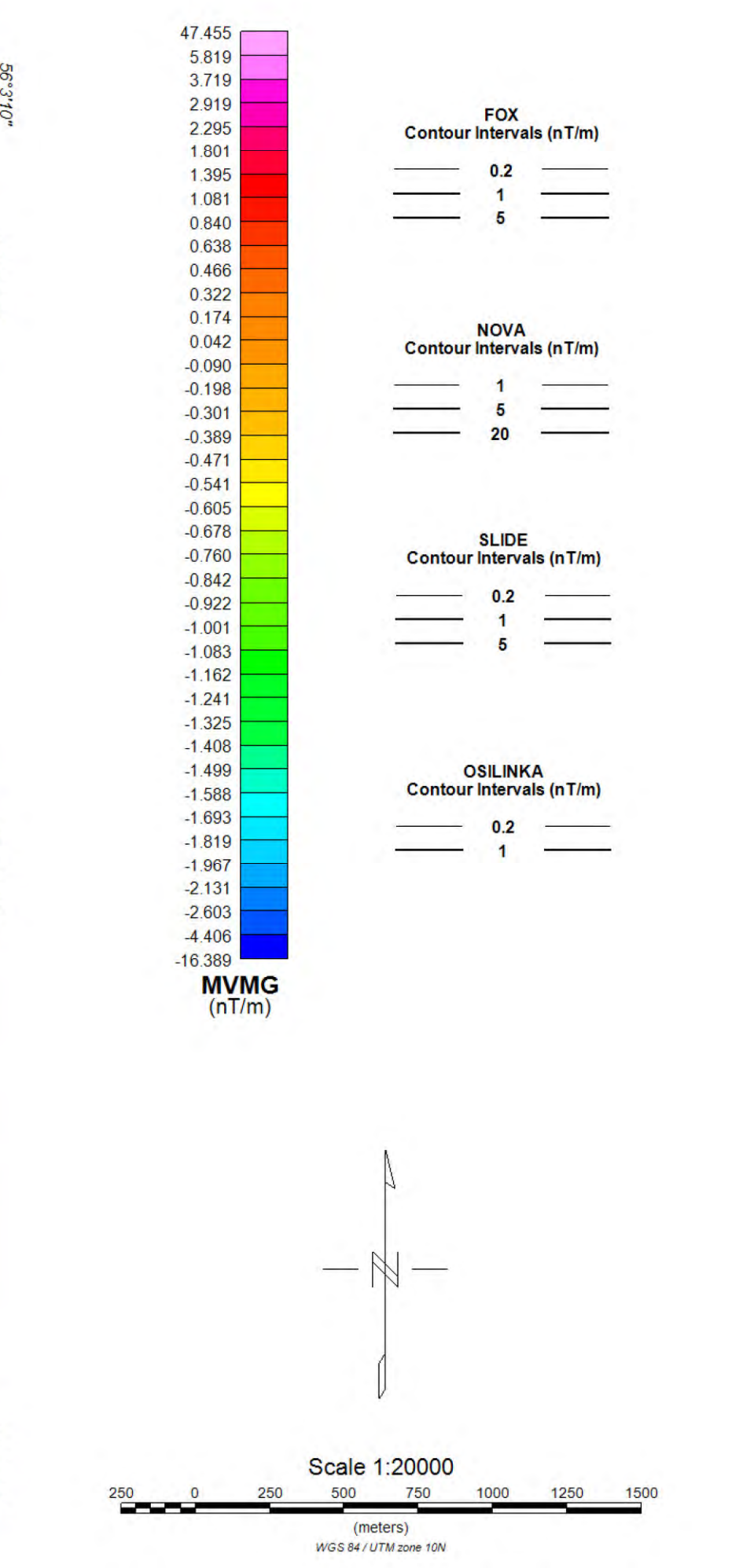
Survey Specifications:
 Base: Omnesca Camp, BC
 Date Flown: August 26 - August 27, 2012
 Aircraft: Bell 407
 Registration: C-FAVY
 Flight Line Spacing: 100 m
 Flight Line Direction: N0°E and N34°E
 Tie Line Spacing: 1000 m
 Tie Line Direction: N90°E and N122°E
 Nominal Bird Height: 45 m
 Sensor Position: 30 m below aircraft

Instrumentation:
 Data Acquisition: CMG DAS
 System: Magnetic Gradiometer, VLF-EM, Radiometrics
 Magnetometers: 3 GEM Potassium Total Field
 Vertical Separation: 2.95 m
 Horizontal Separation: 3.45 m
 Sensitivity: +/- 0.001 nT
 Heading Error: +/- 0.15 nT or less
 Gradient Tolerance: 5,000 nT/m maximum
 VLF Station # 1: Lakoure 25.2 kHz
 VLF Station # 2: Jim Creek Seattle 24.8 kHz
 VLF Sensitivity: +/- 5 pT
 Radar Altimeter: Freeflight TRA 3500 @ 10 Hz, +/- 5%
 GPS System: Novatel v4.0 @ 10 Hz, 1-5 m
 Base station Unit: GSM-19 @ 1 Hz, +/- 0.01 nT
 Spectrometer: Radiation Solution RS-500
 Crystals: 4 Downward Looking & 1 Upward Looking
 GRS Acquisition: 1024 Channel Resolution at 1Hz

Navigation:
 System: CD-GPS (Canadian differential)
 Equipment: AgNav Gula and Tee-Jet Receiver
 Elevation: Freeflight TRA 3500 mounted in helicopter

Data Processing:
 Total Magnetic Field: Diurnal correction, tie-line, micro-leveling
 Magnetic Gradients: Heading error, micro-leveling
 VLF: DC bias, line direction

Coordinate System:
 Datum: WGS84
 Major Axis: 6378737.000
 Eccentricity: 0.81819151
 Projection: Universal Transverse Mercator Zone 10N
 Central Meridian: 123°W
 Central Scale Factor: 0.9996
 False Easting: 500,000 mE



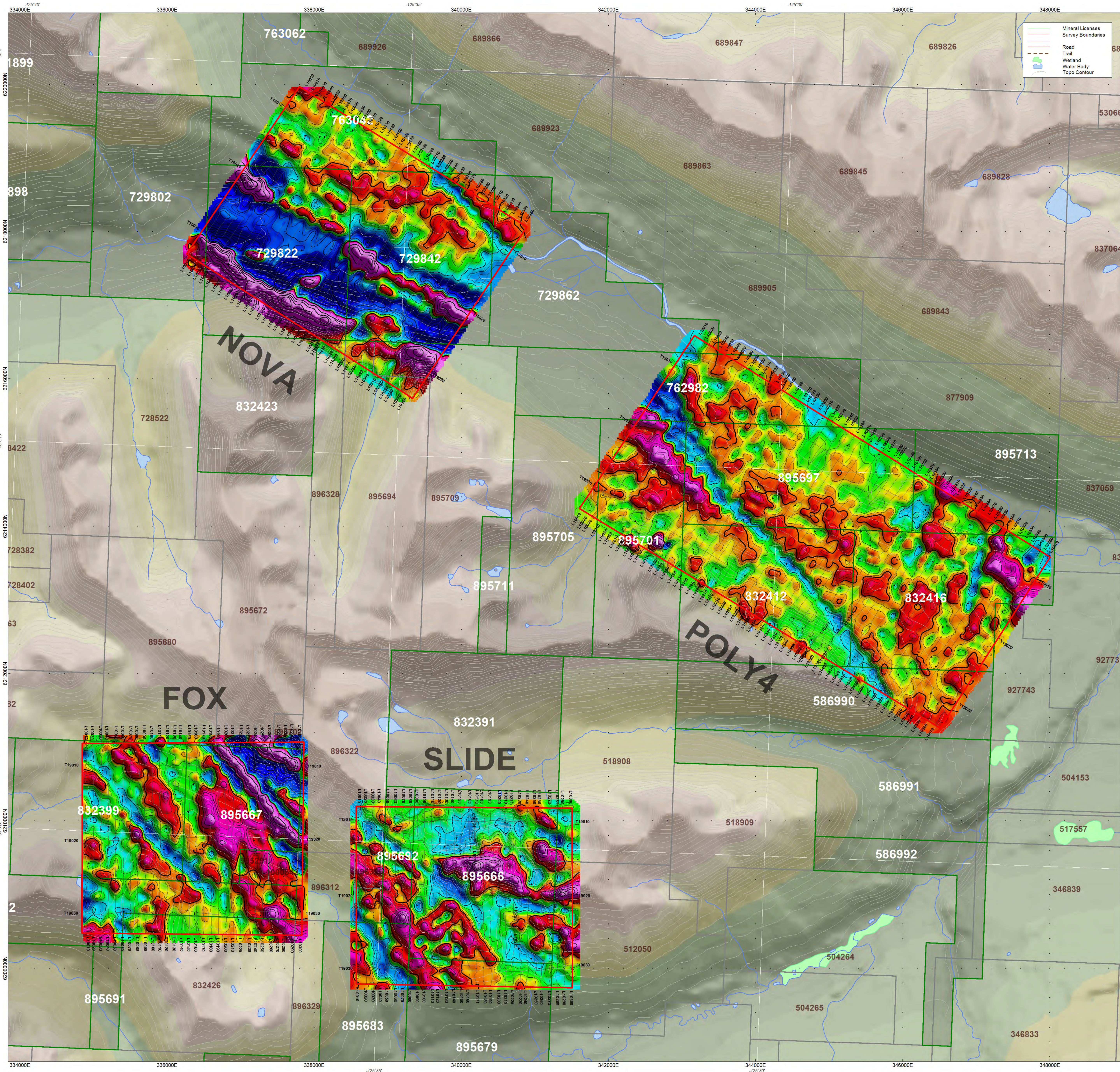
Tajiri TSX.V:TAJ
 RESOURCES CORP.

Tajiri Resources Corp.
 OGK Property, BC

**Magnetic Gradient
 Measured Vertical**
 Fox, Nova, Slide, Osilinka

CMG Airborne

11600 Fifth Line
 Rockwood, Ontario, Canada, N0B 2K0
 www.cmgairborne.com



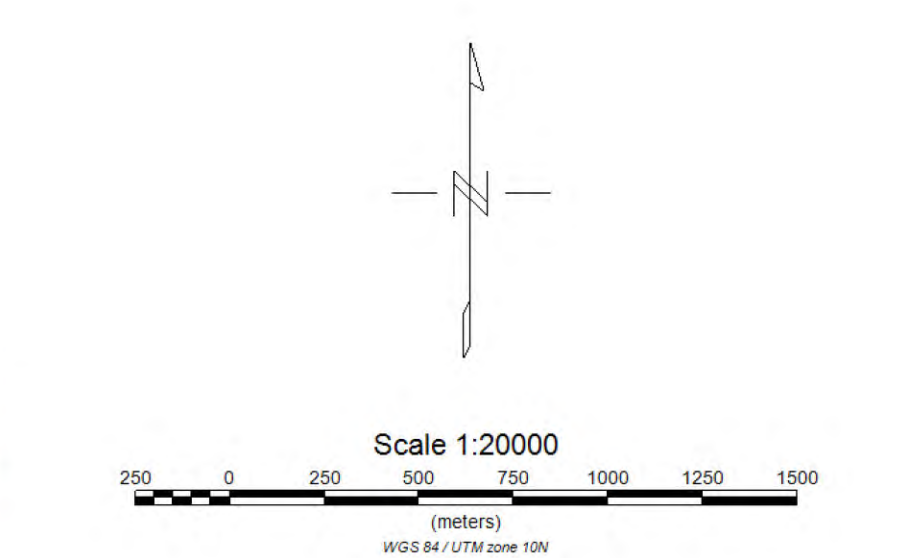
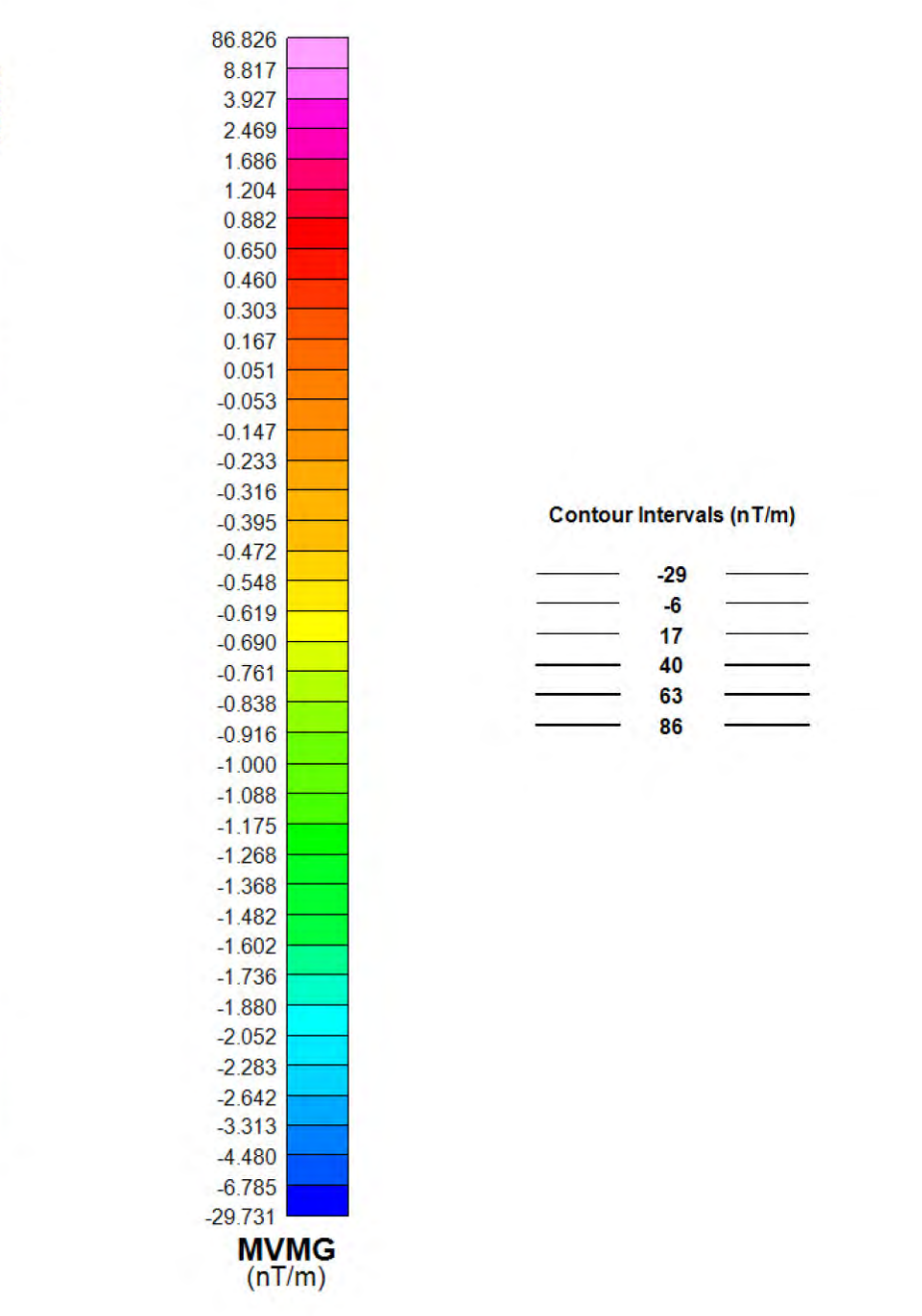
Survey Specifications:
 Base: Omineca Camp, BC
 Date Flown: August 26 - August 27, 2012
 Aircraft: Bell 407
 Registration: C-FAVY
 Flight Line Spacing: 100 m
 Flight Line Direction: N0°E and N34°E
 Tie Line Spacing: 1000 m
 Tie Line Direction: N90°E and N122°E
 Nominal Bird Height: 45 m
 Sensor Position: 30 m below aircraft

Instrumentation:
 Data Acquisition: CMG DAS
 System: Magnetic Gradiometer, VLF-EM, Radiometers
 Magnetometers: 3 GEM Potassium Total Field
 Vertical Separation: 2.85 m
 Horizontal Separation: 3.45 m
 Sensitivity: +/- 0.001 nT
 Heading Error: +/- 0.15 nT or less
 Gradient Tolerance: 5,000 nT/m maximum
 VLF Station # 1: LaMoure 25.2 kHz
 VLF Station # 2: Jim Creek Seattle 24.8 kHz
 VLF Sensitivity: +/- 3 pT
 Radar Altimeter: Freeflight TRA 3500 @10 Hz +/- 5%
 GPS System: Novatel v4.0 @10 Hz, 1-5 m
 Base station Unit: GSM-19 @1 Hz +/- 0.01 nT
 Spectrometer: Radiation Solution RS-500
 Crystals: 4 Downward Looking & 1 Upward Looking
 GRS Acquisition: 1024 Channel Resolution at 1Hz

Navigation:
 System: CD-GPS (Canadian differential)
 Equipment: AgNav Gula and Tee-Jet Receiver
 Elevation: Freeflight TRA 3500 mounted in helicopter

Data Processing:
 Total Magnetic Field: Diurnal correction, tie-line, micro-leveling
 Magnetic Gradients: Heading error, micro-leveling
 VLF: DC bias, line direction

Coordinate System:
 Datum: WGS84
 Major Axis: 6378137.000
 Eccentricity: 0.81819191
 Projection: Universal Transverse Mercator Zone 10N
 Central Meridian: 123°W
 Central Scale Factor: 0.9996
 False Easting: 500,000 mE

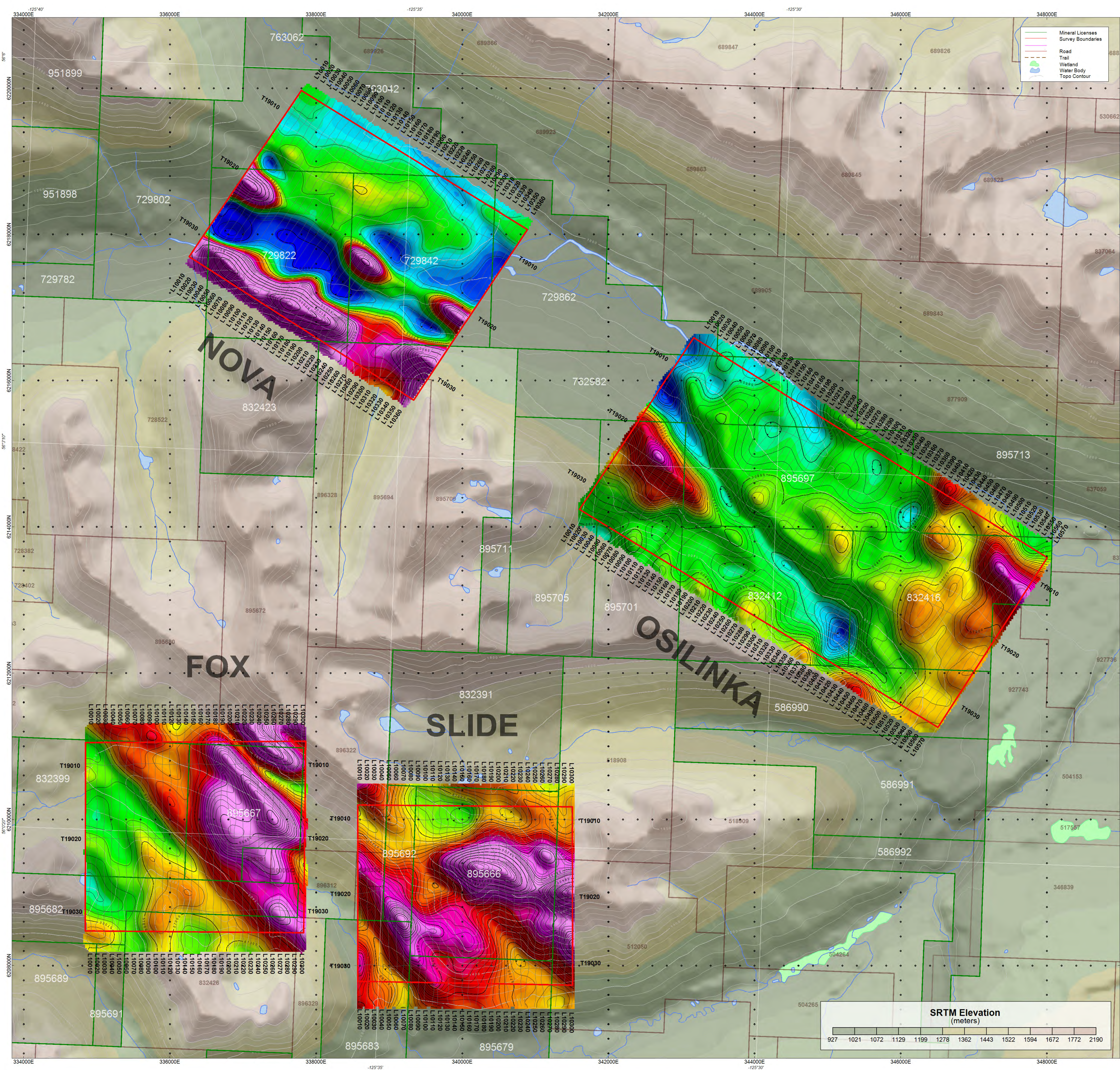


Tajiri Resources Corporation
 Osilinka, OGK Property, BC

**Magnetic Gradient
 Measured Vertical**
 Fox, Nova, Slide, Poly4



11500 Fifth Line
 Rockwood, Ontario, Canada, N0B 2K0
 www.cmgairborne.com



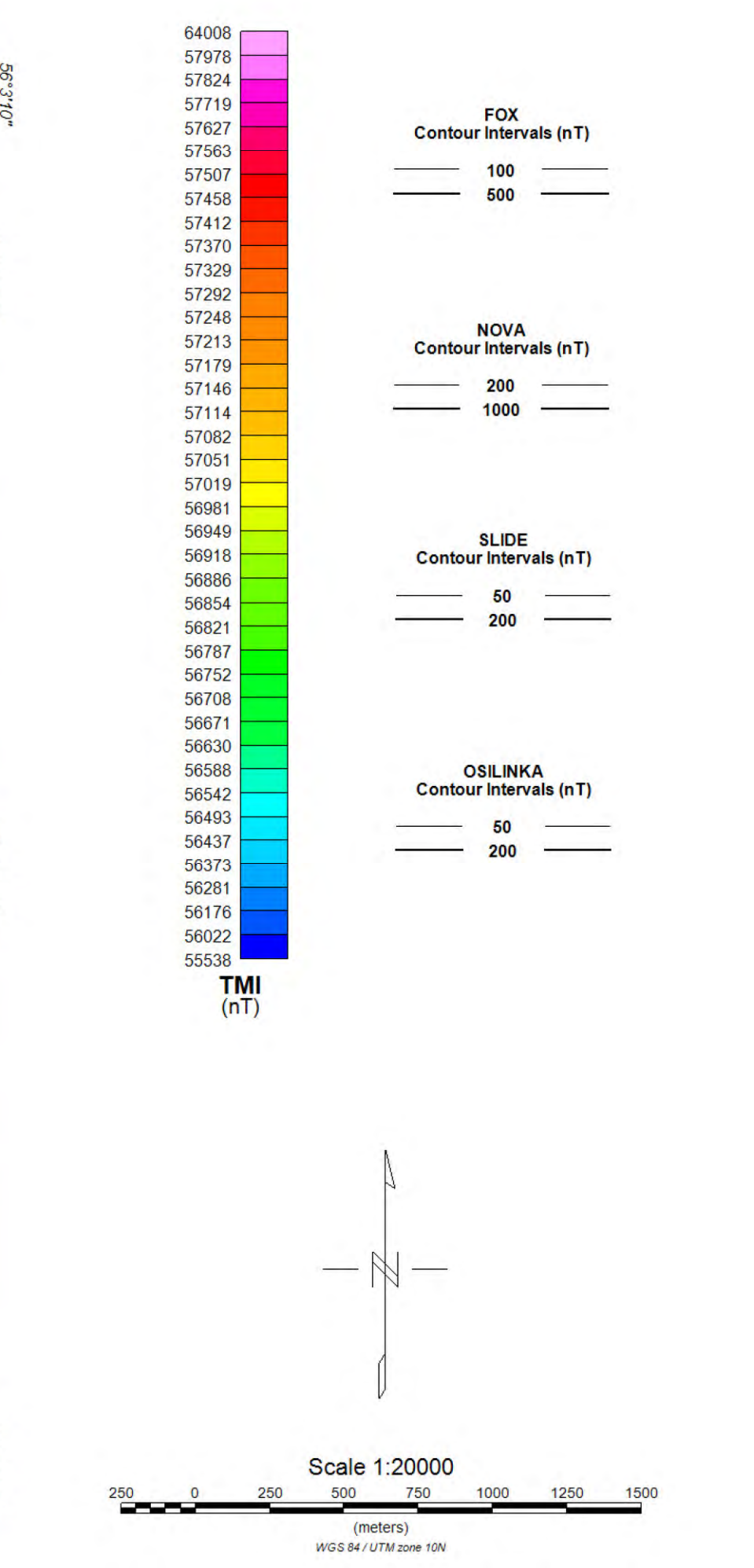
Survey Specifications:
 Base: Omnesca Camp, BC
 Date Flown: August 26 - August 27, 2012
 Aircraft: Bell 407
 Registration: C-FAVY
 Flight Line Spacing: 100 m
 Flight Line Direction: N0°E and N34°E
 Tie Line Spacing: 1000 m
 Tie Line Direction: N90°E and N122°E
 Nominal Bird Height: 45 m
 Sensor Position: 30 m below aircraft

Instrumentation:
 Data Acquisition: CMG DAS
 System: Magnetic Gradiometer, VLF-EM, Radiometrics
 Magnetometers: 3 GEM Potassium Total Field
 Vertical Separation: 2.95 m
 Horizontal Separation: 3.45 m
 Sensitivity: +/- 0.001 nT
 Heading Error: +/- 0.15 nT or less
 Gradient Tolerance: 5,000 nT/m maximum
 VLF Station # 1: Lakoure 25.2 kHz
 VLF Station # 2: Jim Creek Seattle 24.8 kHz
 VLF Sensitivity: +/- 5 pT
 Radar Altimeter: Freeflight TRA 3500 @ 10 Hz, +/- 5%
 GPS System: Novatel v4.0 @ 10 Hz, 1-5 m
 Base station Unit: GSM-19 @ 1 Hz, +/- 0.01 nT
 Spectrometer: Radiation Solution RS-500
 Crystals: 4 Downward Looking & 1 Upward Looking
 GRS Acquisition: 1024 Channel Resolution at 1Hz

Navigation:
 System: CD-GPS (Canadian differential)
 Equipment: AgNav Gula and Tee-Jet Receiver
 Elevation: Freeflight TRA 3500 mounted in helicopter

Data Processing:
 Total Magnetic Field: Diurnal correction, tie-line, micro-leveling
 Magnetic Gradients: Heading error, micro-leveling
 VLF: DC bias, line direction

Coordinate System:
 Datum: WGS84
 Major Axis: 6378737.000
 Eccentricity: 0.81819151
 Projection: Universal Transverse Mercator Zone 10N
 Central Meridian: 123°W
 Central Scale Factor: 0.9996
 False Easting: 500,000 mE



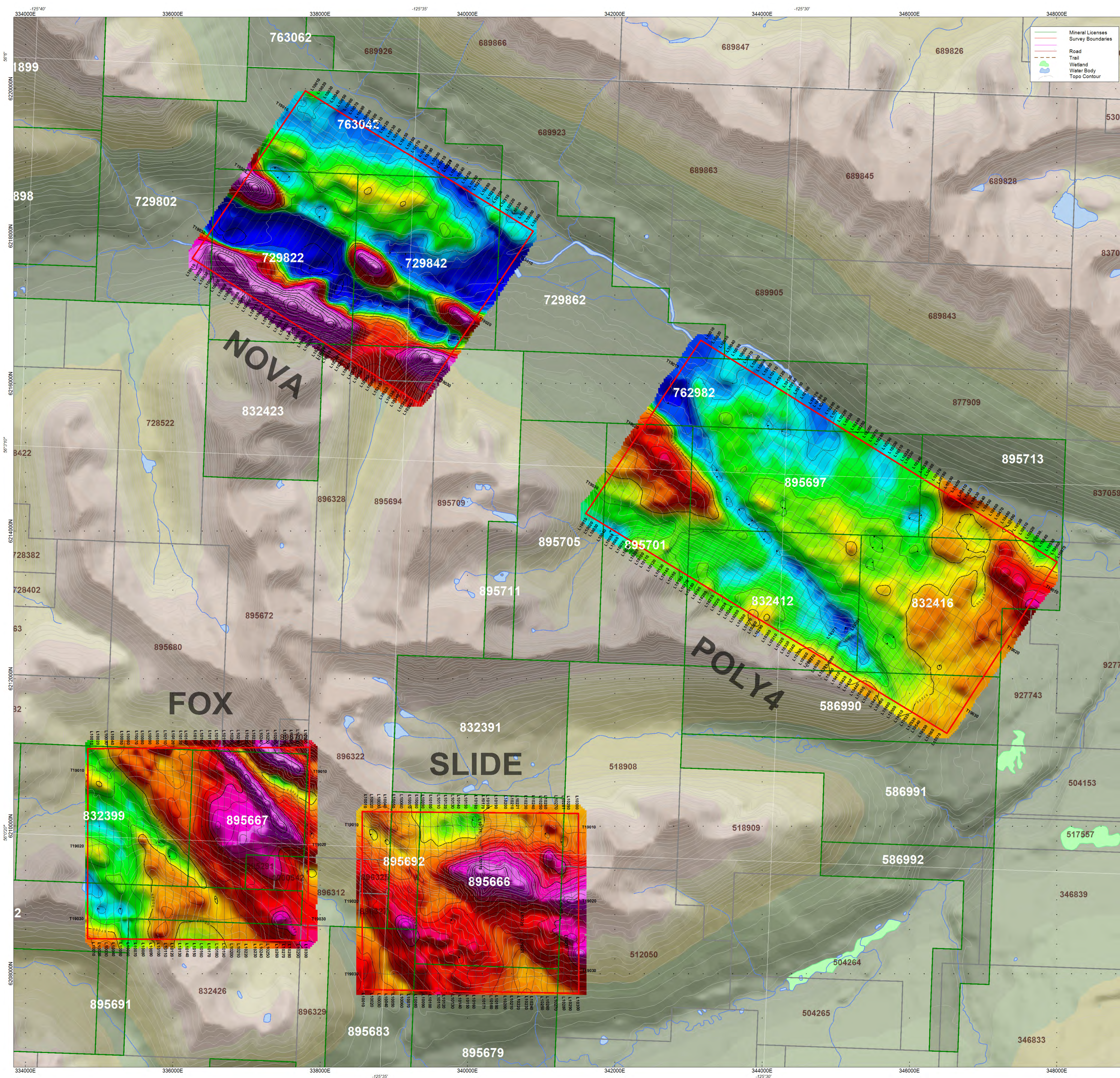
Tajiri TSX.V:TAJ
 RESOURCES CORP.

Tajiri Resources Corp.
 OGC Property, BC

Magnetic Field
Total Magnetic Intensity
 Fox, Nova, Slide, Osilinka

CMG Airborne

11600 Fifth Line
 Rockwood, Ontario, Canada, N0B 2K0
 www.cmgairborne.com



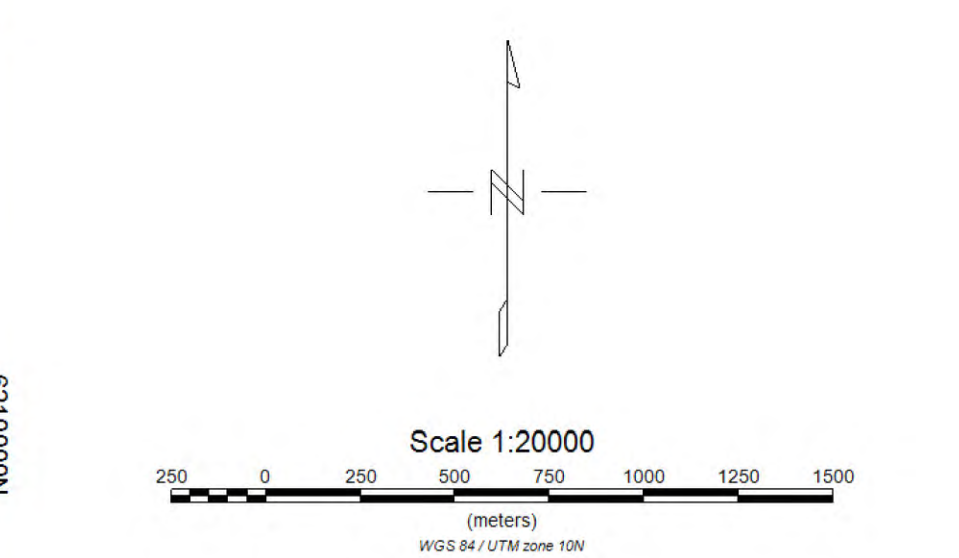
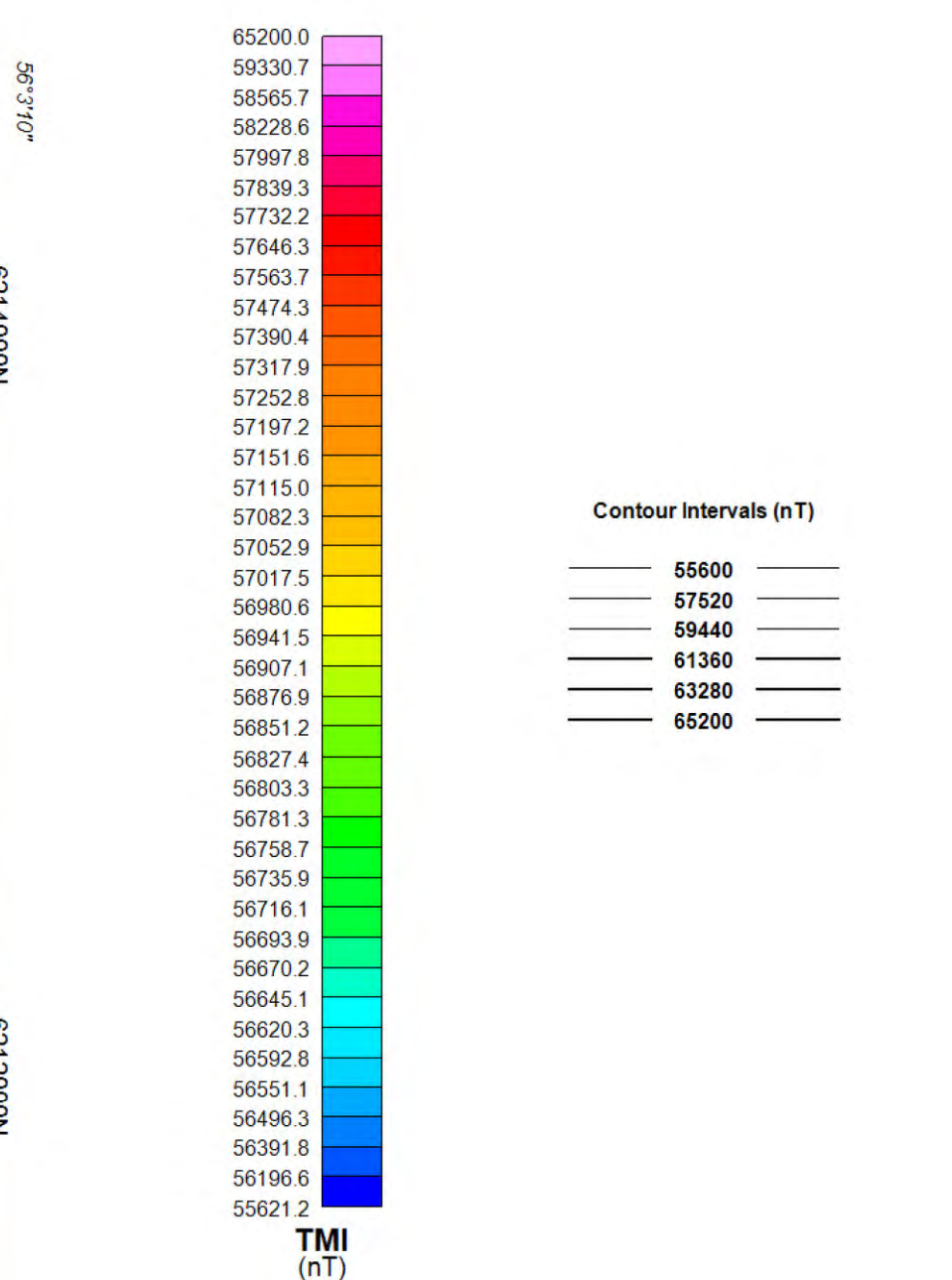
Survey Specifications:
 Base: Omineca Camp, BC
 Date Flown: August 26 - August 27, 2012
 Aircraft: Bell 407
 Registration: C-FAVY
 Flight Line Spacing: 100 m
 Flight Line Direction: N0°E and N34°E
 Tie Line Spacing: 1000 m
 Tie Line Direction: N90°E and N122°E
 Nominal Bird Height: 45 m
 Sensor Position: 30 m below aircraft

Instrumentation:
 Data Acquisition: CMG DAS
 System: Magnetic Gradiometer, VLF-EM, Radiometers
 Magnetometers: 3 GEM Potassium Total Field
 Vertical Separation: 2.95 m
 Horizontal Separation: 3.45 m
 Sensitivity: +/- 0.001 nT
 Heading Error: +/- 0.15 nT or less
 Gradient Tolerance: 5,000 nT/m maximum
 VLF Station # 1: LaMoure 25.2 kHz
 VLF Station # 2: Jim Creek Seattle 24.8 kHz
 VLF Sensitivity: +/- 5 pT
 Radar Altimeter: Freeflight TRA 3500 @10 Hz +/- 5%
 GPS System: Novatel v4.0 @10 Hz, 1-5 m
 Base station Unit: GSM-19 @1 Hz +/- 0.01 nT
 Spectrometer: Radiation Solution RS-500
 Crystals: 4 Downward Looking & 1 Upward Looking
 GRS Acquisition: 1024 Channel Resolution at 1Hz

Navigation:
 System: CD-GPS (Canadian differential)
 Equipment: AgNav Guia and Tee-Jet Receiver
 Elevation: Freeflight TRA 3500 mounted in helicopter

Data Processing:
 Total Magnetic Field: Diurnal correction, tie-line, micro-leveling
 Magnetic Gradients: Heading error, micro-leveling
 VLF: DC bias, line direction

Coordinate System:
 Datum: WGS84
 Major Axis: 6378737.000
 Eccentricity: 0.81819191
 Projection: Universal Transverse Mercator Zone 10N
 Central Meridian: 123°W
 Central Scale Factor: 0.9996
 False Easting: 500,000 mE



Tajiri Resources Corporation
 Osiinka, OGG Property, BC

**Magnetic Field
 Total Magnetic Intensity
 Fox, Nova, Slide, Poly4**



11500 Fifth Line
 Rockwood, Ontario, Canada, N0B 2K0
 www.cmgairborne.com