

**PROSPECTING REPORT**

CLAIM NAME – FOX2

TENURE # 617223

EVENT # 5376652

COQUAHALLA GOLD BELT REGION  
NEW WESTMINSTER DISTRICT  
MAP 092H

GPS COORDINATE REFERENCE  
CENTER OF CLAIM  
49. 22' 14" N, 121. 9' 4" W

REPORT PREPARED BY

TENURE OWNER  
ROBERT D'AOUST  
FMC 106134

JUNE 30, 2012

GEOLOGICAL SURVEY BRANCH  
ASSESSMENT REPORT

33,755

## TABLE OF CONTENTS

Page	i ....	Copy of Tenure Renewal
	1 ....	Cover Page
	2 ....	Table of Contents
	3 ....	Introduction / Location & Access / Previous work / General Geology
	4 ....	Summary / Conclusion
	5 ....	Work Evaluation & Cost Statement / Attending Parties & Qualifications Affidavit
	6 ....	General Location Reference Map – Map 1
	7 ....	Local Area Reference Map – Map 2
	8 ....	Work Area Map – Map - 3

## **Introduction & Location**

The Fox2 property, tenure #617223, lies approximately 17 air kilometers due-east of the City of Hope. The tenure is an eight cell mineral claim situated on Montigny creek, a small tributary of Sowaqua Creek. Sowaqua Creek is a northwesterly flowing tributary of the Coquihalla River. The property lies within the Coquihalla Gold Belt, a northwest trending mineralization zone, underlain by the Hozameen Fault. The general area is well notarized for hosting gold-bearing mineralization, with the more prominent deposit being that of the Carolin Mine, located approximately 15 kilometers to the north-north west.

## **Access**

Leaving the City of Hope, travel north on Hwy 5 (Coquihalla Hwy) approximately 22kms, then exit the highway at the Sowaqua Creek turn off. Travel down the exit ramp and enter the large gravel parking area; on your left is the sign denoting the entrance to the Sowaqua Creek Forestry road. Travel up this rough (some heavy rain damage & washed out areas) two-lane gravel road 14kms to reach the western boundary of the claim.

## **Previous Work in the Area**

On investigation into the Sowaqua Creek Valley, I found two historical Minfile reports (092HSW148 & 092HSW080) and an Aris report 11449 that revealed that some values of gold and platinum had been found. I did not find any reference to Montigny Creek.

## **General Area Geology**

In reference to the above noted work reports, the tenure's area generalized geology is described as being underlain by Permian to Jurassic Hozameen Complex rocks comprised mainly of inter-bedded chert, pelite and volcanic sandstones with distinct gray and black banding. The ultramafic rocks which occur along the Hozameen fault are part of the Coquihalla Serpentine Belt. Thirty-three samples containing silica with visible pyrrhotite and pyrite were assayed. Assays yielded traces of gold, silver, copper and nickel (Assessment Report 11449).

## **Summary**

On May 12, 2012, We returned to the same area as last season and continued prospecting on a plateau 40 to 50 meters above Montigny Creek, on the south bank. We parked our vehicle at the terminus of a logging spur road that exits to the left from Sowaqua Creek FSR at 14.9kms from the Coquihalla Hwy.

Please reference to map # 3 – attached

From the vehicle, We hiked approximately 1/3 kilometer along the ridge of the river gully, through a heavily forested area. We then spread out in a much wider area. We moved boulders and dug holes to obtain numerous grab samples. We sifted and classified approximately 400 kilograms of the raw material on the site down to .45mm minus. We collected approximately 40 kilograms of concentrated material for further processing. We then filled in the holes and raked the surface.

## **Conclusions**

Using manual crushing methods and hydro emulsion processes, we separated and inspected the material. The material from this area produced produced numerous small flakes of gold, approximately 1.5 grams. It was decided that further exploration was required. The tenure was renewed for another term.

**Work Evaluation & Cost Statement**

May 12, 2012

--- 12.0 Man Hours Prospecting---

<b>Labor</b>	<b>6.0 hours</b>	<b>\$ 120.00</b>
<b>John Crowe</b>		
<b>Supervisor</b>	<b>6.0 hours</b>	<b>\$ 150.00</b>
<b>Bob D'Aoust</b>		<b>-----</b>
		<b>\$ 270.00</b>
<b>Allowable Vehicle Expenses (20%)</b>		<b>\$ 54.00</b>
<b>Allowable Meal Expenses</b>		<b>26.00</b>
<b>Report Preparation</b>		<b>50.00</b>
		<b>-----</b>
	<b>Total</b>	<b>\$ 400.00</b>

**Attending Parties & Qualifications**

Robert D'Aoust – 28 years prospecting experience  
fmc – 106134

John Crowe – 5 years prospecting experience

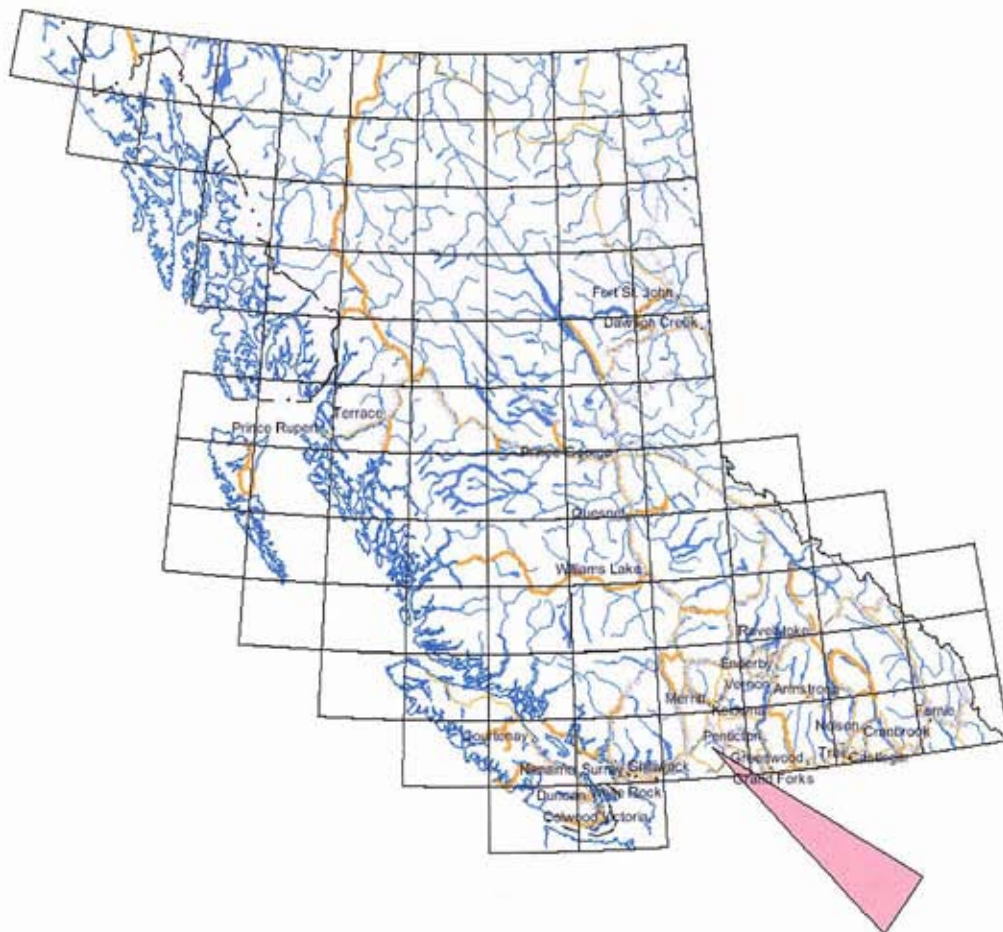
Report prepared by,

Robert Andre D'Aoust  
Owner  
June 30, 2012



MineralTides  
OnlineBC

# MAP 1 - TENURE 617223 - EVENT #5376652



## Legend

Provincial Boundary (1:6M)

- Boundary (International)
- Boundary (Interprovincial)

□ NTS Grid

Transportation - Lines (1:6M)

- Road - Trunk
- Road - Main
- Rail Line

Water - Lines (1:6M)

- River/Stream - Definite
- Lake - Definite
- Island - Definite
- Coastline - Definite

Water - Polygons (1:6M)

- River/Stream - Definite
- Lake - Definite
- Major Cities

0 225 450 km.

Map center: 53°39' N, 124°54' W



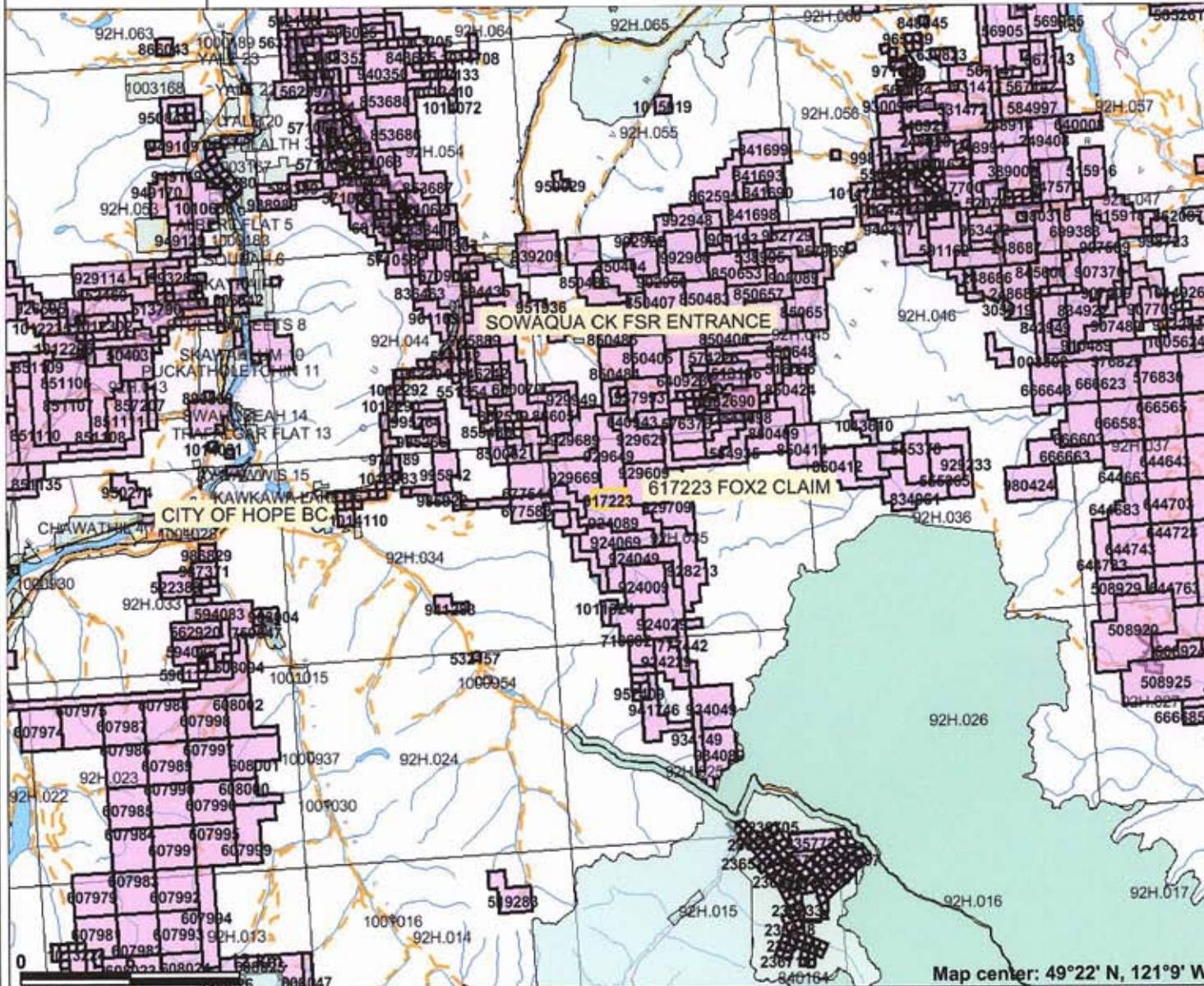
Scale: 1:12,326,408

This map is a user generated static output from an Internet mapping site and is for general reference only. Data layers that appear on this map may or may not be accurate, current, or otherwise reliable. THIS MAP IS NOT TO BE USED FOR NAVIGATION.

Notes: GENERAL LOCATION REFERENCE MAP



# MAP 2 - TENURE 617223 - EVENT #5376652



### Legend

- Indian Reserves
- National Parks
- Conservancy Areas
- Parks
- Federal Transfer Lands
- Mineral Tenure (current)
- Mineral Claim
- Mineral Lease
- Mineral Reserves (current)
- Placer Claim Designation
- Placer Lease Designation
- No Staking Reserve
- Conditional Reserve
- Release Required Reserve
- Surface Restriction
- Recreation Area
- Others
- First Nations Treaty Related Lands
- First Nations Treaty Lands
- BCGS Grid
- Annotation (1:250K)
- Transportation - Points (1:250K)
- Airfield
- Anchorage - Seaplane
- Ferry Route
- Heliport
- Seaplane Base
- Air Field
- Airport
- Air Feature - Condition Unknown
- Airport.Abandoned

Map center: 49°22' N, 121°9' W

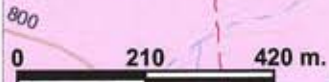
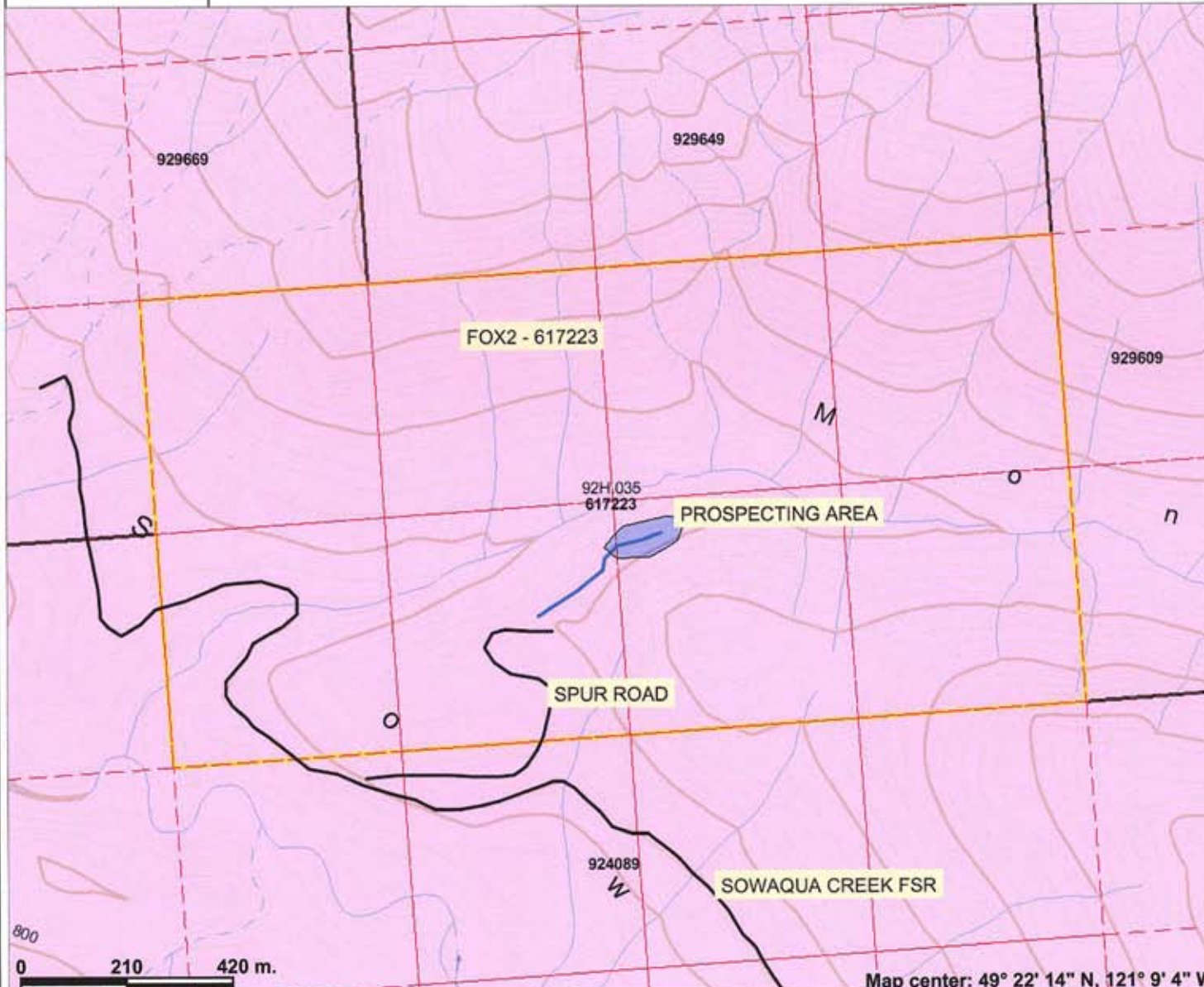
Scale: 1:331,435

This map is a user generated static output from an Internet mapping site and is for general reference only. Data layers that appear on this map may or may not be accurate, current, or otherwise reliable. THIS MAP IS NOT TO BE USED FOR NAVIGATION.

Notes: EVENT #5160420



# MAP 3 - TENURE 617223 - EVENT #5376652



### Legend

- Indian Reserves
- National Parks
- Conservancy Areas
- Parks
- Federal Transfer Lands
- MTO Grid (MTO)
- Mineral Tenure (current)
- Mineral Claim
- Mineral Lease
- Mineral Reserves (current)
- Placer Claim Designation
- Placer Lease Designation
- No Staking Reserve
- Conditional Reserve
- Release Required Reserve
- Surface Restriction
- Recreation Area
- Others
- First Nations Treaty Related Lands
- First Nations Treaty Lands
- Integrated Cadastral Fabric
- Survey Parcels
- BCGS Grid
- Contours (TRIM)
- Contour - Index
- Contour - Index, Indefinite
- Contour - Index, Depression
- Contour - Index, Depression Indefinite
- Contour - Intermediate
- Contour - Intermediate, Indefinite
- Contour - Intermediate, Depression

Scale: 1:12,038

This map is a user generated static output from an Internet mapping site and is for general reference only. Data layers that appear on this map may or may not be accurate, current, or otherwise reliable. THIS MAP IS NOT TO BE USED FOR NAVIGATION.

Notes: AREA OF CONCENTRATED PROSPECTING