

2012 - 2013

# PROSPECTING REPORT

“MULL-REE / KAR-REE Properties”

EVENT # 5439201

Tenures #971769 & #971809

Revelstoke Mining Division  
Map 082L

Central Coordinate Reference  
118° 06' 27.0" W Longitude – 50° 50' 29.8" N Latitude

Report Date – May 26, 2013

*prepared by*

William Larry Amey  
FMC 145191

*for*

Dave Chamberlain  
FMC 206188

## **INDEX**

Page	i.....	Copy of Tenure Renewal
	1.....	Cover Page
	2.....	Index
	3.....	Introduction / Location & Access / Photo Insert
	4.....	Summary / Photo Insert
	5.....	Summary continued / Photo Insert
	6.....	Photo Insert / Conclusion
	7.....	Photo Insert / Closing Comments
	8.....	Summary of Expenditures and Allowances / Personnel
	9.....	Provincial Location Reference - Map 1
	10.....	Tenures Plotted on Mapping - Map 2
	11.....	Work Areas Plotted on Mapping - Map 3
	12.....	Contour Mapping - Map 4

Note: Unless otherwise referenced, map submissions are enhanced excerpts from the BC Ministry's Provincial Mapping System. Scale as that shown.

## **INTRODUCTION**

The contiguous “MULL-REE” property, tenure # 971769, a six cell mineral claim, and the ‘KAR-REE’ property, tenure # 971809, also a six cell mineral claim, each comprising 122.4 hectares, thereby totaling 244.8 hectares over twelve cell units, were staked on March 25, 2012, to prospect the area primarily for precious and semi-precious gemstones, and, of second consideration, rare earth elements. Situate within the crystal belt of British Columbia, more specifically at the base of Mount Begbie, the region’s geology is well known to have supported crystal growth. Located along the Columbia River in the Revelstoke Mining Division, along BC Highway 23, the southern-most tenure, the KAR-REE, lies immediately north of the Blanket Creek Recreational Reserve. Mulvehill Creek flows eastward through the northwest corner of the KAR-REE, and carries onward through the abutting MUL-REE tenure to its confluence with the Columbia.

The northern portion of the MUL-REE is cut by a Contact, of which to the north lies calcisilicate metamorphic rocks of the Monashee Complex, whereas the mineralization of the balance of the claim group (south of the Contact) is reported to consist of a narrow, strongly radioactive zone of muscovite schist that contains significant amounts of thorium and rare earth elements of the lanthanide series. The KAR-REE claim area is underlain by quartzite gneiss and schist of the Shuswap metamorphic assemblage, anomalous radioactivity is believed to be due primarily to thorium, and rare earth elements are evident in some of the quartzite and muscovite schist.

The tenure group is located in a climatic zone of moderate seasonal temperatures with high annual precipitation. The claims are conducive to prospecting for approximately five months out of the year, generally commencing in mid May.

## **LOCATION & ACCESS**

The MULL-REE / KAR-REE tenure group is located south-southeast from the City of Revelstoke, 19.5 road kilometres along Highway 23 from its intersect with Highway #1. The claim group’s northern boundary along the highway lies at 50° 51' 29.7" N, 118° 07' 41.3" W, with the southern boundary along said highway, at coordinate 50° 50' 29.8" N, 118° 06' 27.0" W, with the group’s central point at coordinate 50° 50' 29.8" N, 118° 06' 27.0" W. Highway 23 is a paved artery, offering excellent 2wd access through the central portion of the claim group. The tenured area in relation to the proximity of Revelstoke is best exemplified as illustrated in the image to the immediate right.



**SUMMARY**

Preceding the Summary of this Report, it would be appropriate to make mention of the Geological Assessment Report, No. 11,697 - - exploration relative to a radioactive survey performed on the Karen Claim by Aurun Mines during 1982-1983. The 'Karen Claim' referred to, fundamentally occupied much of the same general ground as that of the current KAR-REE mineral tenure. Though Rare Earth Elements have also been of considerable interest to the author, hereto, primary focus during the present reporting period had been extended solely toward prospecting for gemstones (precious and/or semi-precious). However, albeit brief, and seemingly unimportant to the Aurun operator, mention of the presence of Tourmaline had been expressed within the above noted Assessment Report.

Reconnaissance prospecting was carried out on the tenure group over the dates June 11<sup>th</sup> 2012 through June 13<sup>th</sup> 2012. Map 3, hereto, found on Page 11, illustrates the three traverses over which explorations were conducted during the 2012-2013 fiscal program. Varied land photos are also included, herein.

In general, with exception to the area explored on Day 3, the prospected area is heavily forested with primarily coniferous trees, augmented with sporadic barren patches of ground having only shallow overburden, and of which, would not support tree growth. Some of these barren patches expose open bedrock, however, surficial outcrops were limited. The striations on bedrock sectors gave testament to significant glacial erosion. Some of the outcrops were capped in moss (see *fig 1 below*).



*fig 1*

Again referring to Map 3, for the June 11<sup>th</sup> segment, the prospecting traverse commenced along Highway 23 in a northerly direction from the south end of the property group. The road-cuts were examined for the presence of crystal structures. At Latitude coordinate 50° 50' 47.23" N, the traverse then struck more-or-less westward (inland) for approximately 275 metres, thence fundamentally southward for approximately 450 metres, then turned eastward for approximately 490 metres, back to the highway.

..... *Summary continued*

***Summary continued.....***

On day two of the exploration program, June 12<sup>th</sup> 2012, again referring to Map 3, prospecting commenced along Highway 23 at the above noted coordinate (*highway terminus of Day 1's explorations*), thence extended northward along Highway 23 for approximately 500 metres to coordinate 50° 50' 58.38" N, or otherwise, to within 70 metres of the property line separating the KAR-REE tenure from the adjoining MUL-REE tenure. Exploration thence struck fundamentally southwestward (inland) for approximately 370 metres to a large barren patch, thence meandered eastward approximately 500 metres back to the highway.

During the final leg of the 2012-2013 fiscal program, that of June 13<sup>th</sup> 2012, and once more referring to Map 3, focus had been placed on reconnaissance prospecting over the gentle slope (in the upper sector) on the east side of Highway 23. Commencing at the point 175 metres north of the southern boundary line of the KAR-REE tenure, at Latitude coordinate 50° 50' 34.55" N, the prospecting meandered back and forth across the slope for an accrued distance of approximately 1,050 metres. In estimate only, approximately 70% of the area explored in this segment of the program, was void of tree growth, bearing only narrow groves of timber and scattered stunted trees.



*fig 2*





fig 3

## **CONCLUSION**

As previously noted, the intended target/s of this exploration program focused wholly on prospecting for the gemstone factor. Within the aforementioned Assessment Report, it was noted there exists varying levels of radioactivity in most rocks in the area. Therefore, not having a Geiger–Müller counter onboard, and to avoid any potential health issues, it was felt prudent that at this point of time to ‘not’ collect random rocks samples which may pose questionable outcome. In result, very few rock samples were collected during this reconnaissance program.

Primarily, for reference purposes only, six, palm-sized samples were collected in all. However, just the one sample held extremely small (eleven millimeters in length) crystals of Schorl. This sample was secured from along the road-cut at latitude coordinate 50° 50' 36.12" N (*see fig 4, in following*).

No assays have been performed on any of these samples.

In the field, the road-cut exposures examined along the highway and the limited outcrops encountered over the varied (*inland*) traverses, exhibited a broad assemblage of geology, ranging from fracture infillment to metamorphic folding, limonitic staining, shale, gneiss, muscovite schist, light to heavily stained (*rusty*) quartzite, feldspar, and minor pegmatite.

Further work is considered for this tenure group, including a more detailed examination of the road-cuts and inland outcrops, plus a full examination of ground covered within the MUL-REE tenure. The tenures were renewed for a further term to facilitate this consideration.



*fig 3*

**CLOSING COMMENTS**

Whereas prior operators (*during 1978 and again in 1982-1983*) had identified the presence of rare earth elements on the current tenured area, more specifically lanthanide mineralization, in addition to further exploration for gemstones, the author and tenure holder, hereto, intend to further such explorations to better evaluate the aforesaid occurrence of rare earth elements.

**SUMMARY OF EXPENDITURES & ALLOWANCES**

*June 11<sup>th</sup> 2012 to June 13<sup>th</sup> 2012*

Larry Amey - Supervisor

3 days @ \$500 day..... \$ 1,500.00

Dave Chamberlain - Field Assistant

3 days @ \$350 day..... \$ 1,050.00

Non-Commercial Accommodations

(2 nights @ \$70 per night per man)

\$140.00 x 2 = \$ 280.00

Meals..... \$ 124.00

Vehicle 456 km @ \$1.60 all in..... \$ 729.60

Report..... \$ 200.60

Total \$ 3,883.60

**PERSONNEL**

Dave Chamberlain - - 7 years prospecting experience (placer and hardrock), advanced research skills.

Self - - 32 years exploration experience – extensive (in-depth) research into mineralogy and deposit profiles, post glacial terrain physiology, geological formations, comparative geosciences modeling, with advance studies into atmogeology; biogeology & hydrology. Advanced skills in cartography and digital data analysis.

May 26, 2013



*prepared by*

William Larry Amey  
FMC 145191

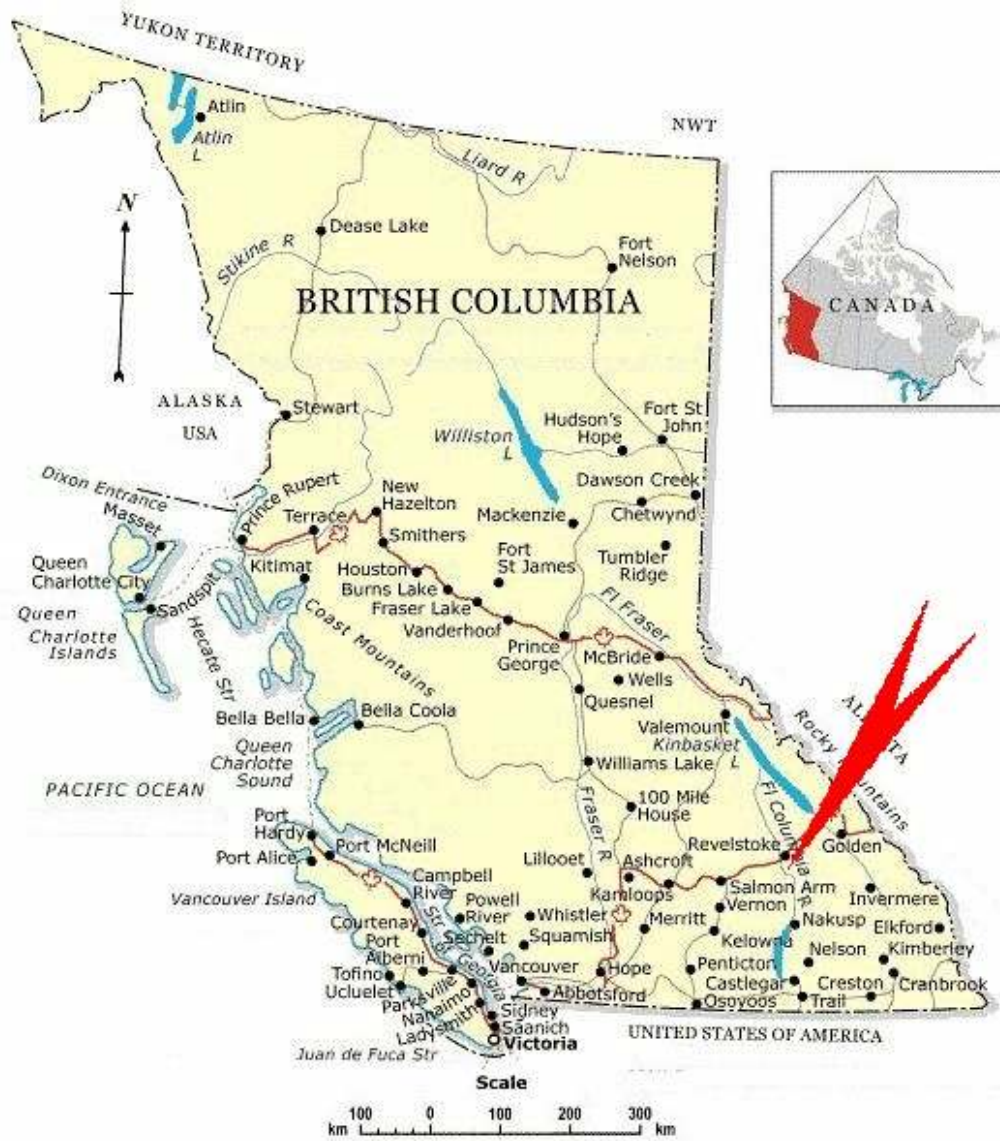
*for*

Dave Chamberlain  
FMC 206188

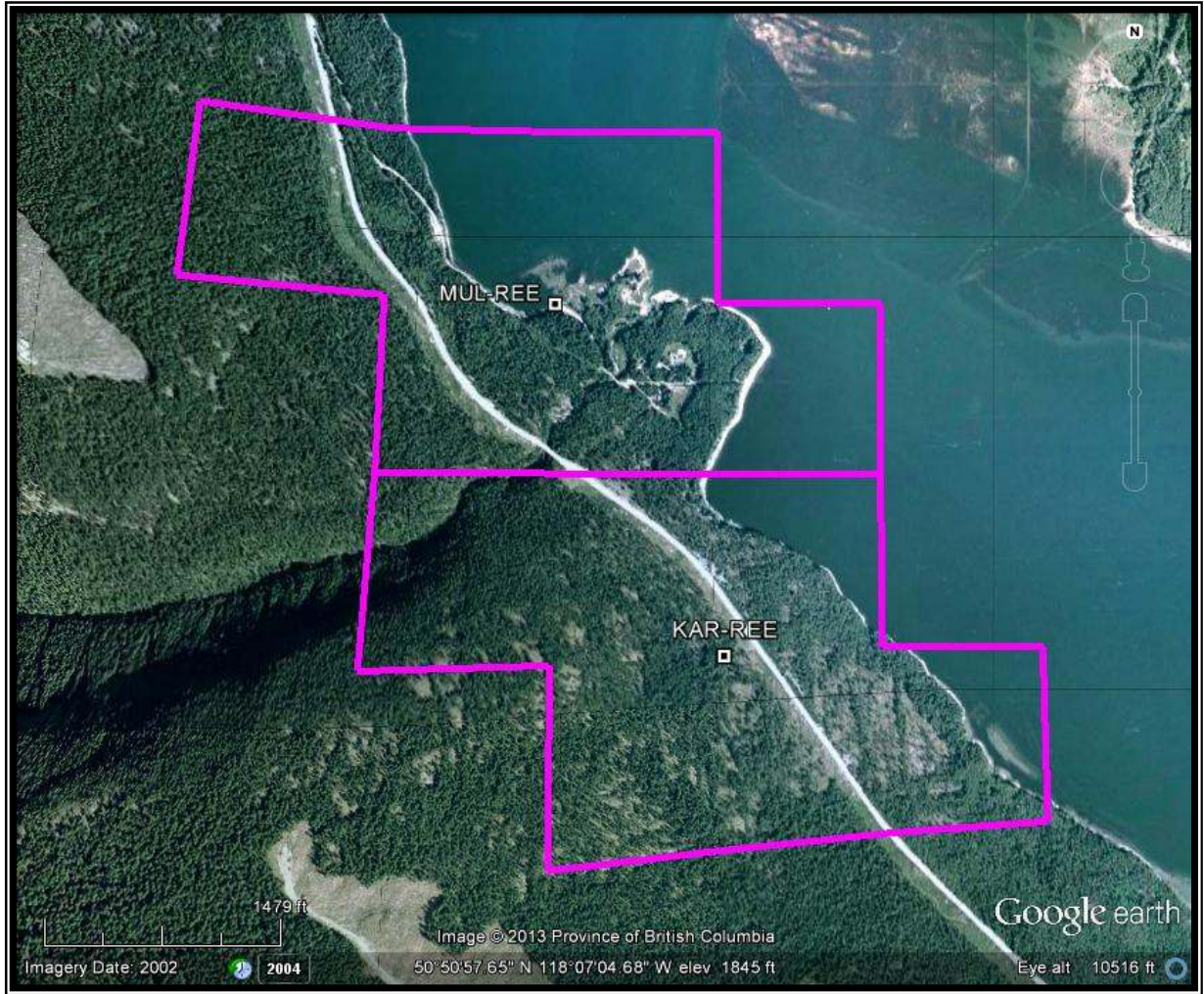


# REFERENCE MAP 1

## Claim Geographical Location



REFERENCE MAP 2  
MULL-REE - KAR-REE TENURE GROUP

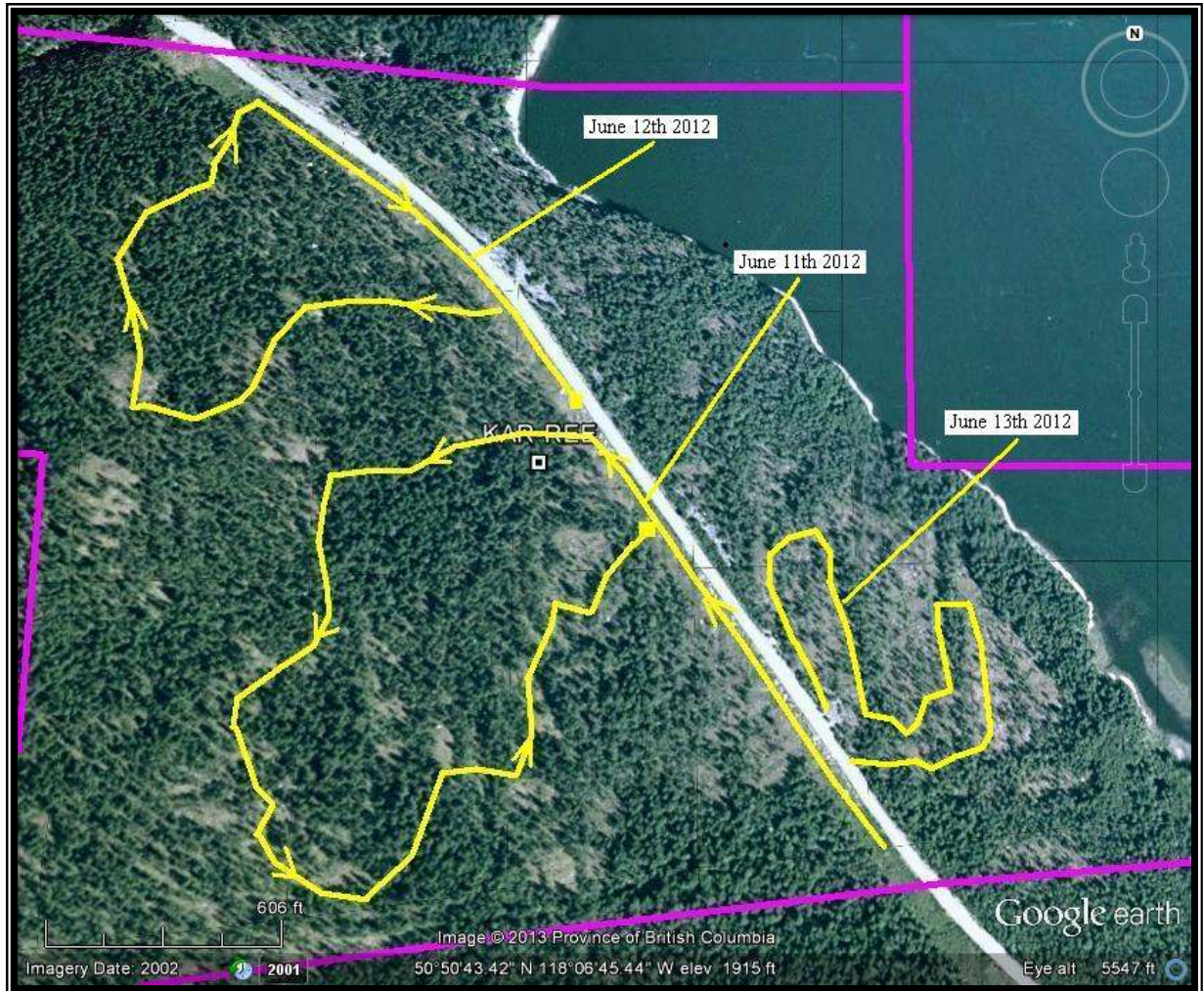


Scale As Shown  
Map 082L Excerpt  
Tenure Coordinate Reference  
118° 06' 27.0" W Longitude – 50° 50' 29.8" N Latitude



### REFERENCE MAP 3

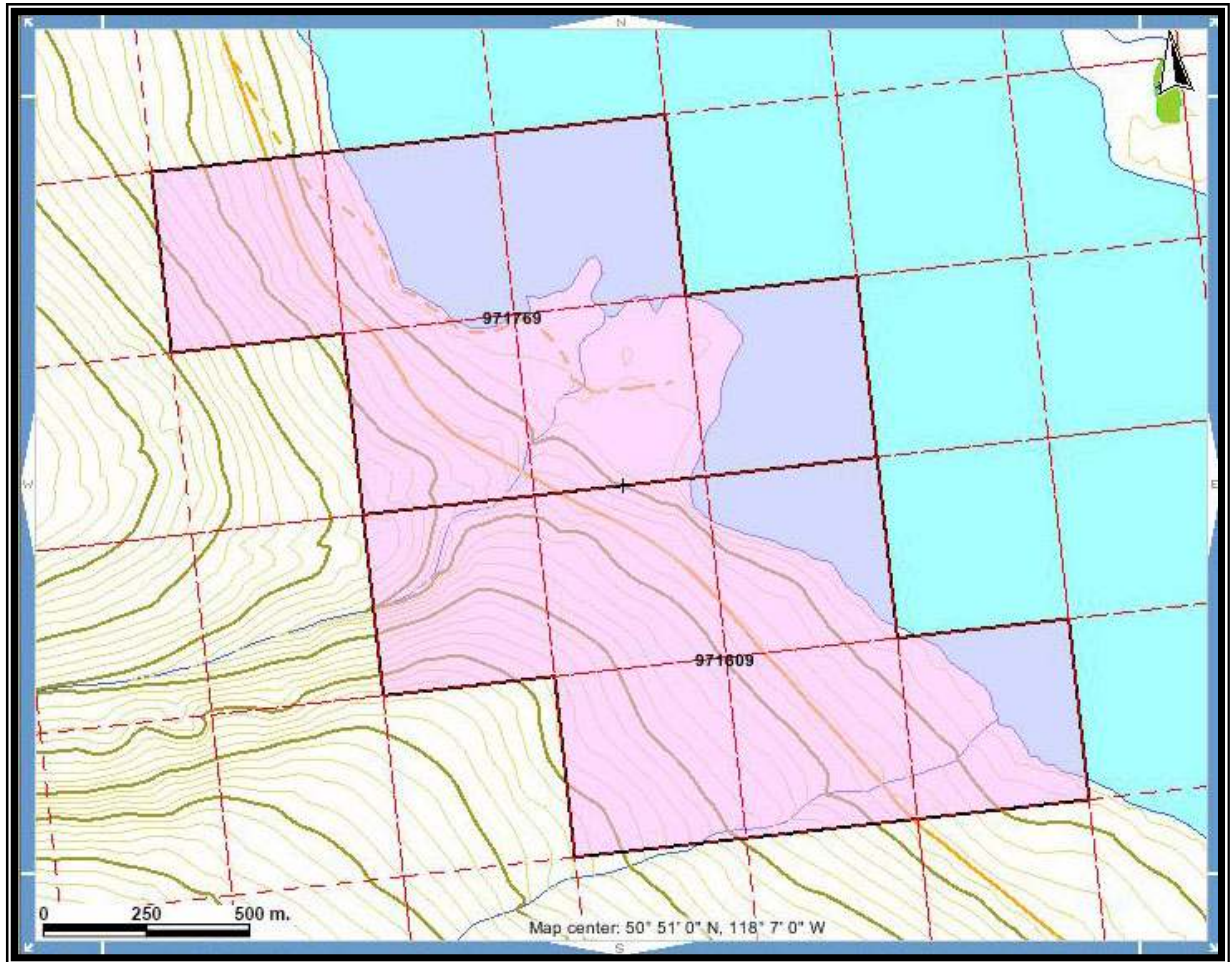
### Work Areas



Scale - As Shown  
Map 082L Excerpt  
Tenure Coordinate Reference  
118° 06' 27.0" W Longitude – 50° 50' 29.8" N Latitude

REFERENCE MAP 4

Contour Map



Scale 1:12,000  
Map 082L Excerpt  
Tenure Coordinate Reference  
118° 06' 27.0" W Longitude – 50° 50' 29.8" N Latitude