

ASSESSMENT WORK REPORT

SKY PILOT GOLD

**BC Geological Survey
Assessment Report
34899**

Prospecting

Assays

Maps

Claim Name

Tenure Number

Sky

886969

Sky Pilot

1020897

Whistler

1025356

Amended

RECEIVED
MINERAL TITLES BRANCH
VANCOUVER, B.C.
JUN 26 2015

Located in the Yale-Lillooet Mining Division.

NTS Maps: #092G007

Basic Location: Latitude: 49° 39' 9" N
Longitude: 123° 01' W

Owner/Operator of the claims and author of this report is Murray Halliday.

Date Submitted: October 6, 2014

RECEIVED
OCT 06 2014
MINISTRY OF ENERGY AND MINES

EVENT #

5511930

**GEOLOGICAL SURVEY BRANCH
ASSESSMENT REPORT**

34,899

TABLE OF CONTENTS

Title Page	1
Introduction	3
Claims Prospected	4
Prospector's Qualifications	4
Prospecting Report	5
Work Assessment	7
Claimable Work	12
Assay Results	13
All Maps	18

INTRODUCTION

SKY PILOT GOLD

This report covers all claims prospected by Murray Halliday during 2013-2014. These claims are about ten kilometers south of Squamish and are accessed by the Stawamus river road.

Murray Halliday is the sole owner and operator of all claims being reported.

The claims cover an area between Mount Baldwin and Sky Pilot Mountain in the upper Stawamus river valley. This area is part of the Britannia-Stawamus-Indian river pendant that is known as the Lower Cretaceous Gambier Marine Group.

The Britannia Mine (1905-1974) is located a few kilometers northwest of this property. The commodities were silver, gold, copper, zinc, lead and cadmium. The property consists of three claims with a combined total of nineteen units which is approximately four hundred hectares.

CLAIMS PROSPECTED

SKY PILOT GOLD

Sky	886969	Six Units
Sky Pilot	1020897	Eight Units
Whistler	1025356	Five Units

PROSPECTOR'S QUALIFICATIONS

The discipline and self-reliance I obtained from four years of post-secondary education I have applied to informally educating myself about geology and prospecting.

In recent years I have made several significant discoveries including the results in this report.

PROSPECTING REPORT

SKY PILOT GOLD

The Sky Pilot Gold property is located on Mount Baldwin about ten kilometers south of Squamish.

Geologically this area is located in the eastern portion of the Britannia-Indian river pendant which hosts the historic Britannia Mine (092GNW003) to the west. Mineralization is typically massive and occurs in association with quartz veins in silicified andesite breccia. For more information refer to minfile number 092GNW006.

My previous report concluded that creek 3S-63 creek required a more extensive geochemical survey. This was conducted on 3S-63 creek, other streams in close proximity and the summit of the Indian river. Fifteen samples were collected and assayed consisting of four soil samples and eleven silt samples.

All four soil samples were collected with a trowel from a depth of approximately eight to ten inches at the "C" horizon adjacent to the altered bedrock. The silt samples were also collected with a trowel from a depth of typically two to four inches adjacent to the bedrock. All fifteen samples were coarse screened, dried, bagged, labeled and delivered to AGAT laboratories for assaying by Aqua Regia Digest. From these results six samples were chosen to be assayed for gold.

The results support the potential for creek 3S-63 with highlights of 174 ppm copper, 51.7 ppm lead, 185 ppm zinc and 0.224 ppm gold. The only sample

(SP-1-SS-2A) from the SP-1 showing resulted in 222 ppm copper, 142 ppm lead and 193 ppm zinc. This information stimulates the quest for more detailed prospecting in these two zones.

A significant acquisition of five claim units in January 2014 of the McVicar prospect (092GNW006) expanded the claim block to nineteen units. Accessing this area is difficult due to remoteness, brush and steep relief. The access route however is ideally situated in the area currently producing significant silt samples. A geochem survey will be conducted along the entire route. Motivation is high going into the 2014 season due to this acquisition and the encouraging geochem survey from 2013.

Sample Types and Locations

SUM-2A (Soil):	49.6435°N	123.0391°W
SUM-2B (Soil):	49.6441°N	123.0397°W
SP-1-SS-2A (Soil):	49.6455°N	123.0403°W
3.6S-63-2A (Silt):	49.6505°N	123.0420°W
3.3S-63-2A (Silt):	49.6512°N	123.0420°W
3S-63-2C (Silt):	49.6515°N	123.0420°W
3S-63-2B (Soil):	49.6517°N	123.0418°W
3S-63-2A-trib. (Silt):	49.6525°N	123.0403°W
3S-63-2A (Silt):	49.6521°N	123.0381°W
3S-63-2D (Silt):	49.6524°N	123.0360°W
3S-63-2E (Silt):	49.6527°N	123.0347°W
3S-63-2A-BR. (Silt):	49.6513°N	123.0434°W
2.5S-63-2A (Silt):	49.6523°N	123.0425°W
2S-63-2A (Silt):	49.6530°N	123.0433°W
1.5S-63-2A (Silt):	49.6539°N	123.0449°W

ASSESSMENT OF WORK – 2013-2014

SKY PILOT GOLD

All work was done by the claim holder Murray Halliday (F.M. #142681)

<u>DATE:</u>	<u>CLAIM:</u>	<u>WORK DONE:</u>	<u>HOURS:</u>
July 11, 2013	Sky	Prospect	12
July 12, 2013	Sky	Prospect	12
July 13, 2013	Sky	Prospect	12
July 14, 2013	Sky	Prospect	12
July 16, 2013	Sky	Prospect	12
July 17, 2013	Sky	Prospect	12
July 18, 2013	Sky	Prospect	12
July 19, 2013	Sky Pilot	Prospect	12
July 24, 2013	Sky	Prospect	12
July 25, 2013	Sky	Prospect	12
July 26, 2013	Sky Pilot	Prospect	12
July 27, 2013	Sky Pilot	Prospect	12
July 29, 2013	Sky Pilot	Prospect	12
July 30, 2013	Sky Pilot	Prospect	12
July 31, 2013	Sky	Prospect	12
Aug. 1, 2013	Sky	Prospect	12
Aug. 2, 2013	Sky Pilot	Prospect	12
Aug. 4, 2013	Sky Pilot	Prospect	12
Aug. 5, 2013	Sky Pilot	Prospect	12
Aug 6, 2013	Sky Pilot	Prospect	12
Aug. 12, 2013	Sky	Prospect	12
Aug. 13, 2013	Sky	Prospect	12
Aug. 14, 2014	Sky	Prospect	12

**ASSESSMENT OF WORK – 2013-2014
SKY PILOT GOLD**

<u>DATE:</u>	<u>CLAIM:</u>	<u>WORK DONE:</u>	<u>HOURS:</u>
Aug. 15, 2013	Sky	Prospect	12
Aug. 17, 2013	Sky	Prospect	12
Aug. 18, 2013	Sky	Prospect	12
Aug. 19, 2013	Sky	Prospect	12
Aug. 20, 2013	Sky	Prospect	12
Aug. 22, 2013	Sky	Prospect	12
Aug. 23, 2013	Sky	Prospect	12
Aug. 24, 2013	Sky	Prospect	12
Aug. 26, 2013	Sky	Prospect	12
Aug. 27, 2013	Sky Pilot	Prospect	12
Aug. 28, 2013	Sky Pilot	Prospect	12
Aug. 29, 2013	Sky Pilot	Prospect	11
Sept. 3, 2013	Sky Pilot	Prospect	11
Sept. 4, 2013	Sky Pilot	Prospect	11
Sept. 5, 2013	Sky	Prospect	11
Sept. 6, 2013	Sky	Prospect	11
Sept. 8, 2013	Sky	Prospect	11
Sept. 9, 2013	Sky	Prospect	11
Sept. 10, 2013	Sky Pilot	Prospect	11
Sept. 11, 2013	Sky Pilot	Prospect	11
Sept. 13, 2013	Sky Pilot	Prospect	11
Sept. 14, 2013	Sky	Prospect	11
Sept. 15, 2013	Sky	Prospect	11
Oct. 4, 2013	Sky	Prospect	10
Oct. 5, 2013	Sky	Prospect	10

**ASSESSMENT OF WORK – 2013 – 2014
SKY PILOT GOLD**

<u>DATE:</u>	<u>CLAIM:</u>	<u>WORK DONE:</u>	<u>HOURS:</u>
Oct. 6, 2013	Sky	Prospect	10
Oct. 7, 2013	Sky	Prospect	10
Oct. 9, 2013	Sky	Prospect	10
Oct. 10, 2013	Sky Pilot	Prospect	10
Oct. 11, 2013	Sky Pilot	Prospect	10
Oct. 12, 2013	Sky Pilot	Prospect	9
Oct. 14, 2013	Sky Pilot	Prospect	9
Oct. 15, 2013	Sky Pilot	Prospect	9
Oct. 16, 2013	Sky	Prospect	9
Oct. 17, 2013	Sky	Prospect	9
Oct. 20, 2013	Sky Pilot	Prospect	9
Oct. 21, 2013	Sky Pilot	Prospect	9
Oct. 22, 2013	Sky Pilot	Prospect	9
Oct. 23, 2013	Sky Pilot	Prospect	9
Oct. 26, 2013	Sky	Prospect	8
Oct. 27, 2013	Sky	Prospect	8
Oct. 28, 2013	Sky	Prospect	8
Oct. 30, 2013	Sky	Prospect	8
Oct. 31, 2013	Sky Pilot	Prospect	8
Nov. 1, 2013	Sky Pilot	Prospect	8
Nov. 2, 2013	Sky Pilot	Prospect	8
Nov. 3, 2013	Sky Pilot	Prospect	8
Nov. 10, 2013	Sky Pilot	Prospect	7

**ASSESSMENT OF WORK – 2013 – 2014
SKY PILOT GOLD**

<u>DATE:</u>	<u>CLAIM:</u>	<u>WORK DONE:</u>	<u>HOURS:</u>
Nov. 11, 2013	Sky Pilot	Prospect	7
Nov. 12, 2013	Sky Pilot	Prospect	7
Nov. 13, 2013	Sky Pilot	Prospect	7
Nov. 14, 2013	Sky Pilot	Prospect	7
Nov. 16, 2013	Sky Pilot	Prospect	7
Nov. 17, 2013	Sky Pilot	Prospect	7
Nov. 18, 2013	Sky Pilot	Prospect	7
Nov. 19, 2013	Sky Pilot	Prospect	7
Nov. 20, 2013	Sky Pilot	Prospect	7
May 6, 2014	Sky Pilot	Prospect	12
May 7, 2014	Sky Pilot	Prospect	12
May 9, 2014	Sky Pilot	Prospect	12
May 10, 2014	Sky Pilot	Prospect	12
May 11, 2014	Sky Pilot	Prospect	12
May 13, 2014	Sky Pilot	Prospect	12
May 14, 2014	Sky Pilot	Prospect	12
May 15, 2014	Sky Pilot	Prospect	12
May 16, 2014	Sky Pilot	Prospect	12
May 21, 2014	Sky Pilot	Prospect	12
May 22, 2014	Sky Pilot	Prospect	12
May 23, 2014	Sky Pilot	Prospect	12
May 25, 2014	Sky Pilot	Prospect	12
May 26, 2014	Sky Pilot	Prospect	12

**ASSESSMENT OF WORK – 2013 – 2014
SKY PILOT GOLD**

<u>DATE:</u>	<u>CLAIM:</u>	<u>WORK DONE:</u>	<u>HOURS:</u>
May 27, 2014	Sky Pilot	Prospect	12
May 28, 2014	Sky Pilot	Prospect	12
May 30, 2014	Sky Pilot	Prospect	12
May 31, 2014	Sky Pilot	Prospect	12
June 1, 2014	Sky Pilot	Prospect	12
June 2, 2014	Sky Pilot	Prospect	12
June 4, 2014	Sky Pilot	Prospect	12
June 5, 2014	Sky Pilot	Prospect	12
June 6, 2014	Sky Pilot	Prospect	12
June 11, 2014	Sky Pilot	Prospect	12
June 12, 2014	Sky Pilot	Prospect	12
June 13, 2014	Sky Pilot	Prospect	12
June 15, 2014	Sky	Prospect	12
June 16, 2014	Sky	Prospect	12
June 17, 2014	Sky	Prospect	12
June 18, 2014	Sky	Prospect	12
June 20, 2014	Sky	Prospect	12
June 21, 2014	Sky	Prospect	12
June 22, 2014	Sky	Prospect	12
June 23, 2014	Sky	Prospect	12
June 29, 2014	Sky	Prospect	12
June 30, 2014	Sky	Prospect	12
July 1, 2014	Sky	Prospect	12

**ASSESSMENT OF WORK – 2013 – 2014
SKY PILOT GOLD**

<u>DATE</u>	<u>CLAIM</u>	<u>WORK DONE</u>	<u>HOURS</u>
July 2, 2014	Sky	Prospect	12
July 3, 2014	Sky	Prospect	12
July 4, 2014	Sky	Prospect	12
Total Days: 117		Assay Samples: Fifteen	Total Hrs: 1307

ASSESSMENT OF WORK – 2013 -2014

CLAIMABLE WORK

SKY PILOT GOLD

Total hours: 1307 hrs. X \$25.00/hr. = \$32,675.00

Truck: 2490 km X \$0.50/km = \$1,245.00

Assays: Eight Soil Samples = \$185.00

Total Claimable Work:

Work:	\$32,675.00
Truck:	\$1,245.00
Assay:	\$185.00
Total:	<u>\$34,105.00</u>



Certificate of Analysis

AGAT WORK ORDER: 14V852890
PROJECT NO:

5623 McADAM ROAD
MISSISSAUGA, ONTARIO
CANADA L4Z 1N9
TEL (905)501-9998
FAX (905)501-0589
<http://www.agatlabs.com>

CLIENT NAME: MURRAY HALLIDAY

ATTENTION TO: MURRAY HALLIDAY

(201-073) Aqua Regia Digest - Metals Package, ICP-OES finish

DATE SAMPLED: Jun 17, 2014		DATE RECEIVED: Jun 13, 2014				DATE REPORTED: Jun 26, 2014				SAMPLE TYPE: Soil				
Analyte:	Sample Login Weight	Ag	Al	As	B	Ba	Be	Bi	Ca	Cd	Ce	Co	Cr	Cu
Unit:	kg	ppm	%	ppm	ppm	ppm	ppm	ppm	%	ppm	ppm	ppm	ppm	ppm
RDL:	0.01	0.2	0.01	1	5	1	0.5	1	0.01	0.5	1	0.5	0.5	0.5
2S-63-2A (5483839)	0.05	0.4	7.87	46	<5	74	1.2	<1	0.82	<0.5	36	22.9	10.6	66.4
2.5S-63-2A (5483840)	0.05	<0.2	2.27	9	<5	99	0.5	<1	0.68	<0.5	13	22.0	8.7	25.5
3S-63-2E (5483841)	0.06	<0.2	3.39	13	<5	70	0.9	<1	0.34	<0.5	14	16.0	16.2	24.2
3S-63-2A-TRIB (5483842)	0.08	0.2	4.96	39	<5	91	0.9	<1	0.55	<0.5	15	20.1	19.8	39.7
3.3S-63-2A (5483843)	0.06	<0.2	3.72	12	<5	57	<0.5	<1	0.31	<0.5	13	11.3	14.9	32.2
3.6S-63-2A (5483844)	0.11	<0.2	2.95	8	<5	128	0.6	<1	0.77	<0.5	11	16.7	11.2	37.6
SUM-2A (5483845)	0.08	<0.2	6.98	9	<5	16	<0.5	<1	0.06	<0.5	15	3.6	24.3	18.4
SUM-2B (5483846)	0.11	<0.2	5.37	7	<5	21	<0.5	<1	0.14	<0.5	14	6.8	27.9	10.3
Analyte:	Fe	Ga	Hg	In	K	La	Li	Mg	Mn	Mo	Na	Ni	P	Pb
Unit:	%	ppm	ppm	ppm	%	ppm	ppm	%	ppm	ppm	%	ppm	ppm	ppm
RDL:	0.01	5	1	1	0.01	1	1	0.01	1	0.5	0.01	0.5	10	0.5
2S-63-2A (5483839)	2.69	6	<1	<1	0.14	7	21	0.84	2330	4.9	0.02	10.0	2160	<0.5
2.5S-63-2A (5483840)	2.41	<5	<1	<1	0.18	6	8	0.98	1230	2.4	0.02	8.7	788	13.5
3S-63-2E (5483841)	3.51	10	<1	<1	0.15	7	7	0.93	1270	1.9	0.01	11.1	746	23.1
3S-63-2A-TRIB (5483842)	3.55	7	1	<1	0.11	6	12	1.15	1070	2.3	0.02	15.7	916	6.9
3.3S-63-2A (5483843)	3.07	9	2	<1	0.14	6	5	0.77	437	1.9	0.01	8.7	549	3.4
3.6S-63-2A (5483844)	2.67	<5	<1	<1	0.24	5	8	1.04	919	2.7	0.04	8.7	828	44.5
SUM-2A (5483845)	3.17	17	2	<1	0.04	8	2	0.31	116	0.7	<0.01	3.0	361	9.8
SUM-2B (5483846)	3.52	15	<1	<1	0.04	6	5	0.45	219	<0.5	0.01	6.2	243	<0.5

Certified By:

Ron Cardinal



Certificate of Analysis

AGAT WORK ORDER: 14V852890

PROJECT NO:

5623 McADAM ROAD
MISSISSAUGA, ONTARIO
CANADA L4Z 1N9
TEL (905)501-9998
FAX (905)501-0589
<http://www.agatlabs.com>

CLIENT NAME: MURRAY HALLIDAY

ATTENTION TO: MURRAY HALLIDAY

(201-073) Aqua Regia Digest - Metals Package, ICP-OES finish

DATE SAMPLED: Jun 17, 2014

DATE RECEIVED: Jun 13, 2014

DATE REPORTED: Jun 26, 2014

SAMPLE TYPE: Soil

Sample ID (AGAT ID)	Analyte:	Rb	S	Sb	Sc	Se	Sn	Sr	Ta	Te	Th	Ti	Tl	U	V
	Unit:	ppm	%	ppm	ppm	ppm	ppm	ppm	ppm	ppm	ppm	%	ppm	ppm	ppm
	RDL:	10	0.005	1	0.5	10	5	0.5	10	10	5	0.01	5	5	0.5
2S-63-2A (5483839)		13	0.103	7	6.1	<10	8	55.5	<10	<10	<5	0.12	<5	17	72.2
2.5S-63-2A (5483840)		15	0.068	<1	3.8	<10	9	49.1	<10	<10	<5	0.16	6	<5	68.7
3S-63-2E (5483841)		23	0.070	<1	5.3	<10	10	23.6	<10	<10	<5	0.18	<5	<5	89.5
3S-63-2A-TRIB (5483842)		13	0.067	3	6.2	<10	11	36.3	<10	<10	<5	0.18	<5	<5	90.9
3.3S-63-2A (5483843)		14	0.054	<1	4.9	<10	13	26.0	<10	<10	<5	0.22	<5	<5	91.3
3.6S-63-2A (5483844)		15	0.081	1	4.7	<10	7	36.6	<10	<10	<5	0.16	<5	<5	83.0
SUM-2A (5483845)		<10	0.070	<1	9.2	<10	8	7.8	<10	<10	<5	0.16	<5	<5	74.8
SUM-2B (5483846)		<10	0.050	<1	12.2	<10	14	19.0	<10	<10	<5	0.27	<5	<5	106

Sample ID (AGAT ID)	Analyte:	W	Y	Zn	Zr
	Unit:	ppm	ppm	ppm	ppm
	RDL:	1	1	0.5	5
2S-63-2A (5483839)		<1	14	101	<5
2.5S-63-2A (5483840)		<1	7	90.3	<5
3S-63-2E (5483841)		<1	8	80.7	<5
3S-63-2A-TRIB (5483842)		<1	10	95.8	<5
3.3S-63-2A (5483843)		<1	7	76.9	<5
3.6S-63-2A (5483844)		<1	7	161	<5
SUM-2A (5483845)		<1	6	26.5	11
SUM-2B (5483846)		<1	6	32.6	20

Comments: RDL - Reported Detection Limit

Certified By:

Ron Cardinal



Certificate of Analysis

AGAT WORK ORDER: 14V863874
PROJECT NO:

5623 McADAM ROAD
MISSISSAUGA, ONTARIO
CANADA L4Z 1N9
TEL (905)501-9998
FAX (905)501-0589
http://www.agatlabs.com

CLIENT NAME: MURRAY HALLIDAY

ATTENTION TO: MURRAY HALLIDAY

(201-073) Aqua Regia Digest - Metals Package, ICP-OES finish

DATE SAMPLED: Jul 15, 2014

DATE RECEIVED: Jul 11, 2014

DATE REPORTED: Jul 31, 2014

SAMPLE TYPE: Soil

Sample ID (AGAT ID)	Analyte:	Sample Login Weight	Ag	Al	As	B	Ba	Be	Bi	Ca	Cd	Ce	Co	Cr	Cu
	Unit:	kg	ppm	%	ppm	ppm	ppm	ppm	ppm	%	ppm	ppm	ppm	ppm	ppm
	RDL:	0.01	0.2	0.01	1	5	1	0.5	1	0.01	0.5	1	0.5	0.5	0.5
1.5S-63-2A (5577788)		0.09	<0.2	3.66	6	<5	78	0.7	<1	0.33	<0.5	12	14.3	15.0	29.6
3S-63-2A-B.R. (5577789)		0.12	<0.2	3.03	24	<5	98	0.7	<1	0.70	<0.5	12	26.5	16.1	80.3
3S-63-2A (5577790)		0.05	<0.2	3.47	9	<5	111	1.1	<1	0.85	<0.5	17	19.2	10.4	41.3
3S-63-2B (5577791)		0.12	<0.2	3.70	24	<5	138	0.8	<1	0.40	<0.5	12	28.2	19.4	174
3S-63-2C (5577792)		0.05	0.3	3.25	23	<5	86	0.8	<1	1.20	0.6	16	32.1	12.3	109
3S-63-2D (5577793)		0.04	<0.2	2.23	10	<5	79	1.0	<1	0.68	<0.5	13	12.7	7.5	26.0
SP-1-5S-2A (5577794)		0.07	<0.2	1.97	7	<5	65	<0.5	<1	0.20	1.2	9	8.6	10.2	222
Sample ID (AGAT ID)	Analyte:	Fe	Ga	Hg	In	K	La	Li	Mg	Mn	Mo	Na	Ni	P	Pb
	Unit:	%	ppm	ppm	ppm	%	ppm	ppm	%	ppm	ppm	%	ppm	ppm	ppm
	RDL:	0.01	5	1	1	0.01	1	1	0.01	1	0.5	0.01	0.5	10	0.5
1.5S-63-2A (5577788)		4.41	10	3	3	0.16	6	6	0.93	954	1.9	0.01	12.6	741	<0.5
3S-63-2A-B.R. (5577789)		4.33	11	1	<1	0.21	5	12	1.77	1310	4.4	0.03	15.1	850	10.0
3S-63-2A (5577790)		2.63	8	5	2	0.13	7	8	0.88	2080	4.0	0.01	11.8	1130	21.3
3S-63-2B (5577791)		4.74	10	2	<1	0.31	5	10	1.60	790	5.7	0.02	15.2	1100	7.3
3S-63-2C (5577792)		3.80	8	<1	2	0.11	7	11	1.43	1950	5.9	0.02	14.3	1030	51.7
3S-63-2D (5577793)		1.87	6	<1	<1	0.08	6	4	0.50	1280	4.7	<0.01	8.3	997	17.8
SP-1-5S-2A (5577794)		3.22	9	1	<1	0.20	4	4	0.85	370	5.0	0.01	7.1	778	142
Sample ID (AGAT ID)	Analyte:	Rb	S	Sb	Sc	Se	Sn	Sr	Ta	Te	Th	Ti	Tl	U	V
	Unit:	ppm	%	ppm	ppm	ppm	ppm	ppm	ppm	ppm	ppm	%	ppm	ppm	ppm
	RDL:	10	0.005	1	0.5	10	5	0.5	10	10	5	0.01	5	5	0.5
1.5S-63-2A (5577788)		15	0.035	<1	3.1	<10	11	25.9	<10	<10	13	0.17	<5	<5	83.6
3S-63-2A-B.R. (5577789)		16	0.073	3	6.0	<10	8	38.3	<10	<10	19	0.14	<5	<5	121
3S-63-2A (5577790)		11	0.112	1	3.1	<10	8	36.4	<10	<10	14	0.11	9	<5	69.3
3S-63-2B (5577791)		25	0.062	<1	7.5	<10	13	44.4	<10	<10	18	0.25	<5	<5	135
3S-63-2C (5577792)		<10	0.123	3	5.2	11	9	51.6	<10	<10	17	0.11	7	7	92.9
3S-63-2D (5577793)		<10	0.152	2	2.3	<10	8	22.7	<10	<10	9	0.09	<5	<5	48.8
SP-1-5S-2A (5577794)		12	0.043	1	2.8	<10	10	11.6	<10	<10	13	0.14	<5	<5	77.3

Certified By:

Y. Chen



Certificate of Analysis

AGAT WORK ORDER: 14V863874

PROJECT NO:

5623 McADAM ROAD
MISSISSAUGA, ONTARIO
CANADA L4Z 1N9
TEL (905)501-9998
FAX (905)501-0589
<http://www.agatlabs.com>

CLIENT NAME: MURRAY HALLIDAY

ATTENTION TO: MURRAY HALLIDAY

(201-073) Aqua Regia Digest - Metals Package, ICP-OES finish

DATE SAMPLED: Jul 15, 2014

DATE RECEIVED: Jul 11, 2014

DATE REPORTED: Jul 31, 2014

SAMPLE TYPE: Soil

Sample ID (AGAT ID)	Analyte:	W	Y	Zn	Zr
	Unit:	ppm	ppm	ppm	ppm
	RDL:	1	1	0.5	5
1.5S-63-2A (5577788)		<1	7	68.2	<5
3S-63-2A-B.R. (5577789)		<1	8	176	<5
3S-63-2A (5577790)		<1	9	160	<5
3S-63-2B (5577791)		<1	8	123	<5
3S-63-2C (5577792)		<1	11	185	<5
3S-63-2D (5577793)		<1	6	88.6	<5
SP-1-5S-2A (5577794)		<1	4	193	<5

Comments: RDL - Reported Detection Limit

Certified By:

Y. Chen



Certificate of Analysis

AGAT WORK ORDER: 14V880669

PROJECT:

5623 McADAM ROAD
MISSISSAUGA, ONTARIO
CANADA L4Z 1N9
TEL (905)501-9998
FAX (905)501-0589
<http://www.agatlabs.com>

CLIENT NAME: MURRAY HALLIDAY

ATTENTION TO: MURRAY HALLIDAY

(202-051) Fire Assay - Trace Au, AAS finish

DATE SAMPLED: Aug 26, 2014

DATE RECEIVED: Aug 26, 2014

DATE REPORTED: Sep 22, 2014

SAMPLE TYPE: Other

Analyte:	Sample Login Weight	Au
Unit:	kg	ppm
RDL:	0.01	0.002
Sample ID (AGAT ID)		
2S-63-2A (5735634)	0.01	<0.002
3S-63-2A-BR (5735635)	0.03	0.039
3S-63-2B (5735636)	0.04	0.012
3S-63-2C (5735637)	0.03	0.224
3S-63-2A-Trib (5735638)	0.01	<0.002
SP-1-SS-2A (5735639)	0.03	<0.002

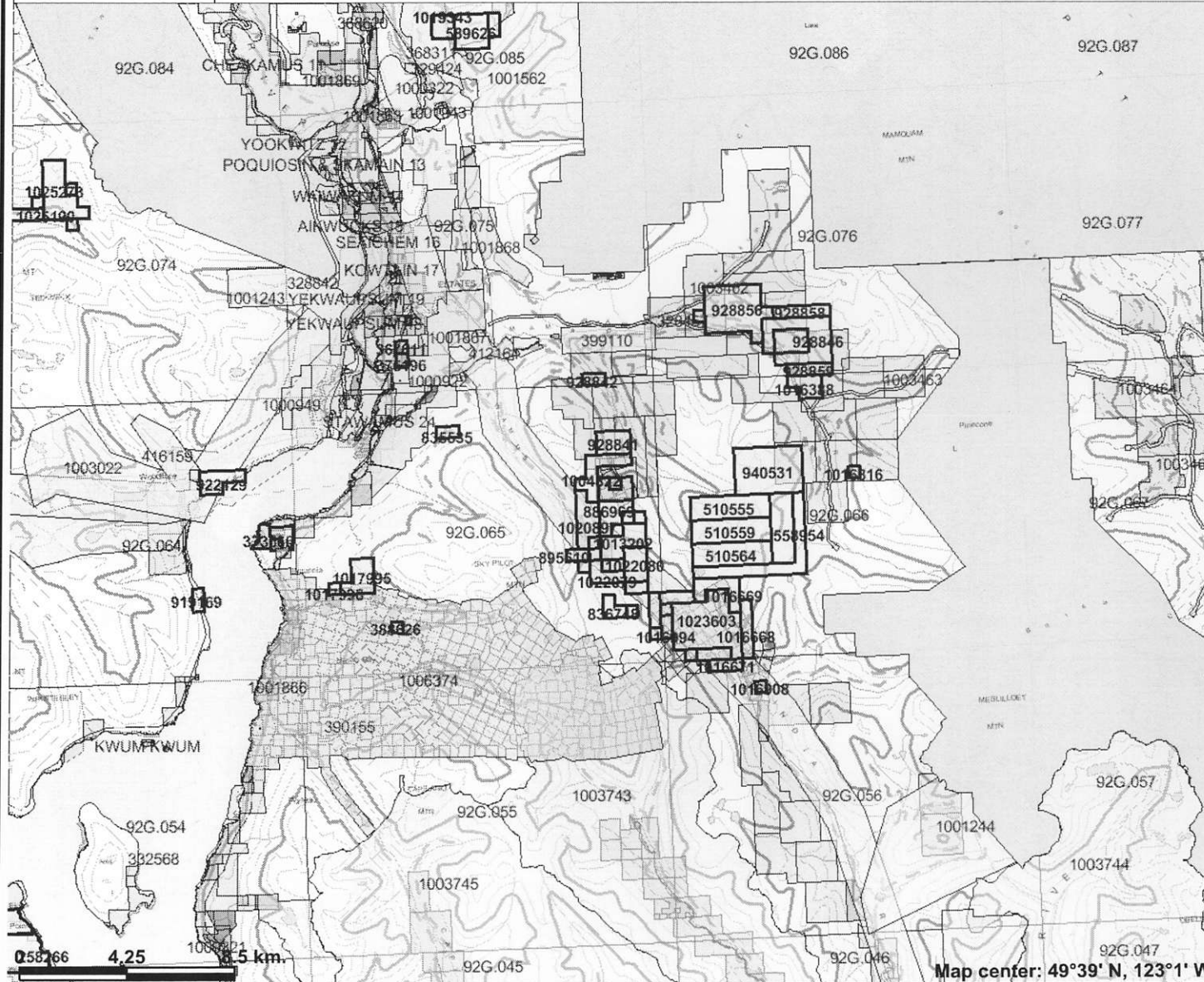
Comments: RDL - Reported Detection Limit

ANALYSES (INCLUDING COMMENTS) :
 DATE RECEIVED: Sep 22, 2014
 REPORT GENERATED BY: ANNE CHIU / 14V880669
 YOUR WORK ORDER: 14V880669
 TELEPHONE:
 ATTENTION TO: MURRAY HALLIDAY
 5623 McADAM ROAD
 MISSISSAUGA, ONTARIO
 CANADA L4Z 1N9
 TEL (905)501-9998
 FAX (905)501-0589
<http://www.agatlabs.com>

Certified By:



Mineral Titles Online



Legend

- Indian Reserves
- National Parks
- Conservancy Areas
- Parks
- Federal Transfer Lands
- Mineral Tenure (current)
 - Mineral Claim
 - Mineral Lease
- Mineral Reserves (current)
 - Placer Claim Designation
 - Placer Lease Designation
 - No Staking Reserve
 - Conditional Reserve
 - Release Required Reserve
 - Surface Restriction
 - Recreation Area
 - Others
- First Nations Treaty Related Lands
 - First Nations Treaty Lands
 - Survey Parcels
- BCGS Grid
- Contours (1:250K)
 - Contour - Index
 - Contour - Intermediate
 - Area of Exclusion
 - Area of Indefinite Contours
 - Annotation (1:250K)
- Transportation - Points (1:250K)
 - Airfield
 - Anchorage - Seaplane
 - Camp Point

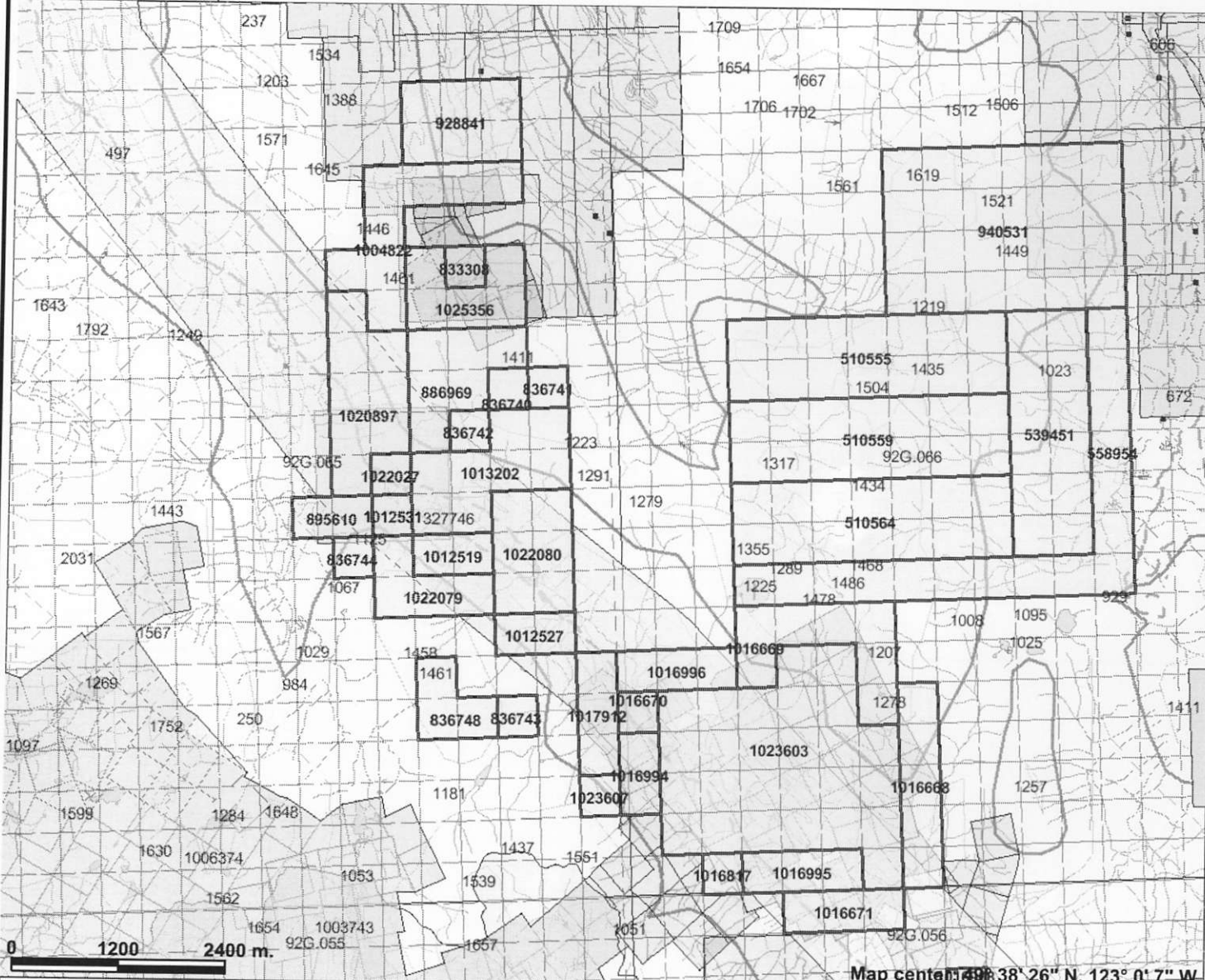
Scale: 1:239,753

This map is a user generated static output from an Internet mapping site and is for general reference only. Data layers that appear on this map may or may not be accurate, current, or otherwise reliable. THIS MAP IS NOT TO BE USED FOR NAVIGATION.

LOCATION MAP - 1



Mineral Titles Online

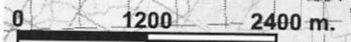


Legend

- Indian Reserves
- National Parks
- Conservancy Areas
- Parks
- Federal Transfer Lands
- MTO Grid (MTO)
- Mineral Tenure (current)
- Mineral Claim
- Mineral Lease
- Mineral Reserves (current)
- Placer Claim Designation
- Placer Lease Designation
- No Staking Reserve
- Conditional Reserve
- Release Required Reserve
- Surface Restriction
- Recreation Area
- Others
- First Nations Treaty Related Lands
- First Nations Treaty Lands
- Survey Parcels
- BCGS Grid
- Contours (1:250K)
- Contour - Index
- Contour - Intermediate
- Area of Exclusion
- Area of Indefinite Contours
- Transportation - Points (TRIM)
- Helipad
- Transportation - Lines (TRIM)



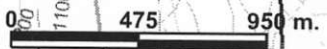
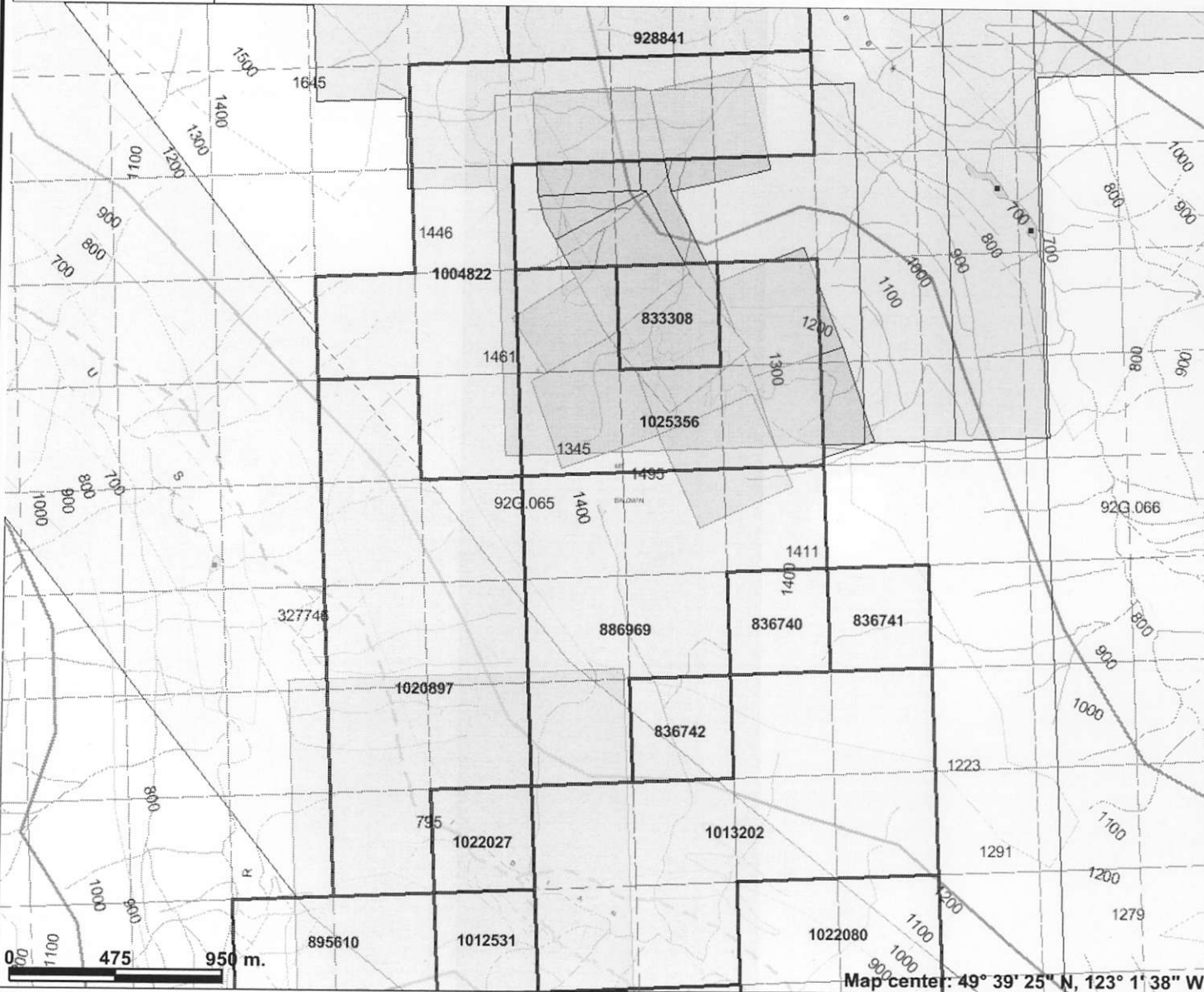
Scale: 1:67,935



Map center: 49° 38' 26" N, 123° 0' 7" W

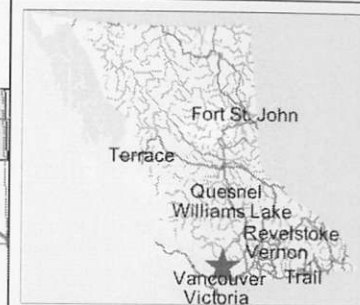
This map is a user generated static output from an Internet mapping site and is for general reference only. Data layers that appear on this map may or may not be accurate, current, or otherwise reliable. THIS MAP IS NOT TO BE USED FOR NAVIGATION.

LOCATION MAP-2



Map center: 49° 39' 25" N, 123° 1' 38" W

This map is a user generated static output from an Internet mapping site and is for general reference only. Data layers that appear on this map may or may not be accurate, current, or otherwise reliable. THIS MAP IS NOT TO BE USED FOR NAVIGATION.

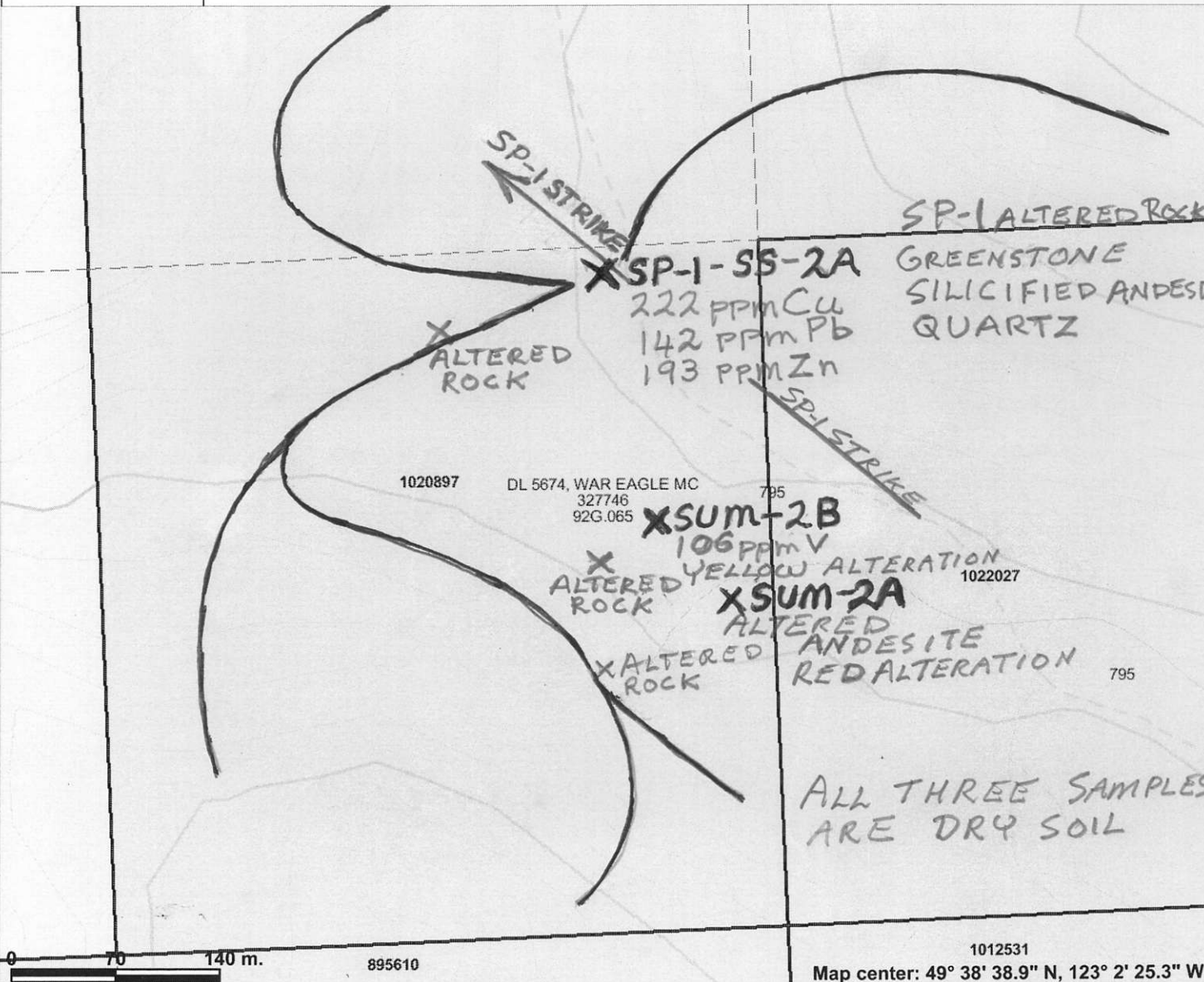


Legend

- Indian Reserves
- National Parks
- Conservancy Areas
- Parks
- Federal Transfer Lands
- MTO Grid (MTO)
- Mineral Tenure (current)
- Mineral Claim
- Mineral Lease
- Mineral Reserves (current)
 - Placer Claim Designation
 - Placer Lease Designation
 - No Staking Reserve
 - Conditional Reserve
 - Release Required Reserve
 - Surface Restriction
 - Recreation Area
 - Others
- First Nations Treaty Related Lands
- First Nations Treaty Lands
- Integrated Cadastral Fabric
- Survey Parcels
- BCGS Grid
- Contours (1:250K)
 - Contour - Index
 - Contour - Intermediate
 - Area of Exclusion
 - Area of Indefinite Contours
- Annotation (1:20K)
- Transportation - Points (TRIM)

Scale: 1:27,174

LOCATION MAP-3



Legend

- Indian Reserves
- National Parks
- Conservancy Areas
- Parks
- Federal Transfer Lands
- MTO Grid (MTO)
- Mineral Tenure (current)
 - Mineral Claim
 - Mineral Lease
- Mineral Reserves (current)
 - Placer Claim Designation
 - Placer Lease Designation
 - No Staking Reserve
 - Conditional Reserve
 - Release Required Reserve
 - Surface Restriction
 - Recreation Area
 - Others
- First Nations Treaty Related Lands
 - First Nations Treaty Lands
 - Integrated Cadastral Fabric
 - Survey Parcels
 - BCGS Grid
 - Contours (TRIM)
 - Contour - Index
 - Contour - Index.Indefinite
 - Contour - Index.Depression
 - Contour - Index.Depression Indefinite
 - Contour - Intermediate
 - Contour - Intermediate.Indefinite
 - Contour - Intermediate.Depression

Scale: 1:4,076

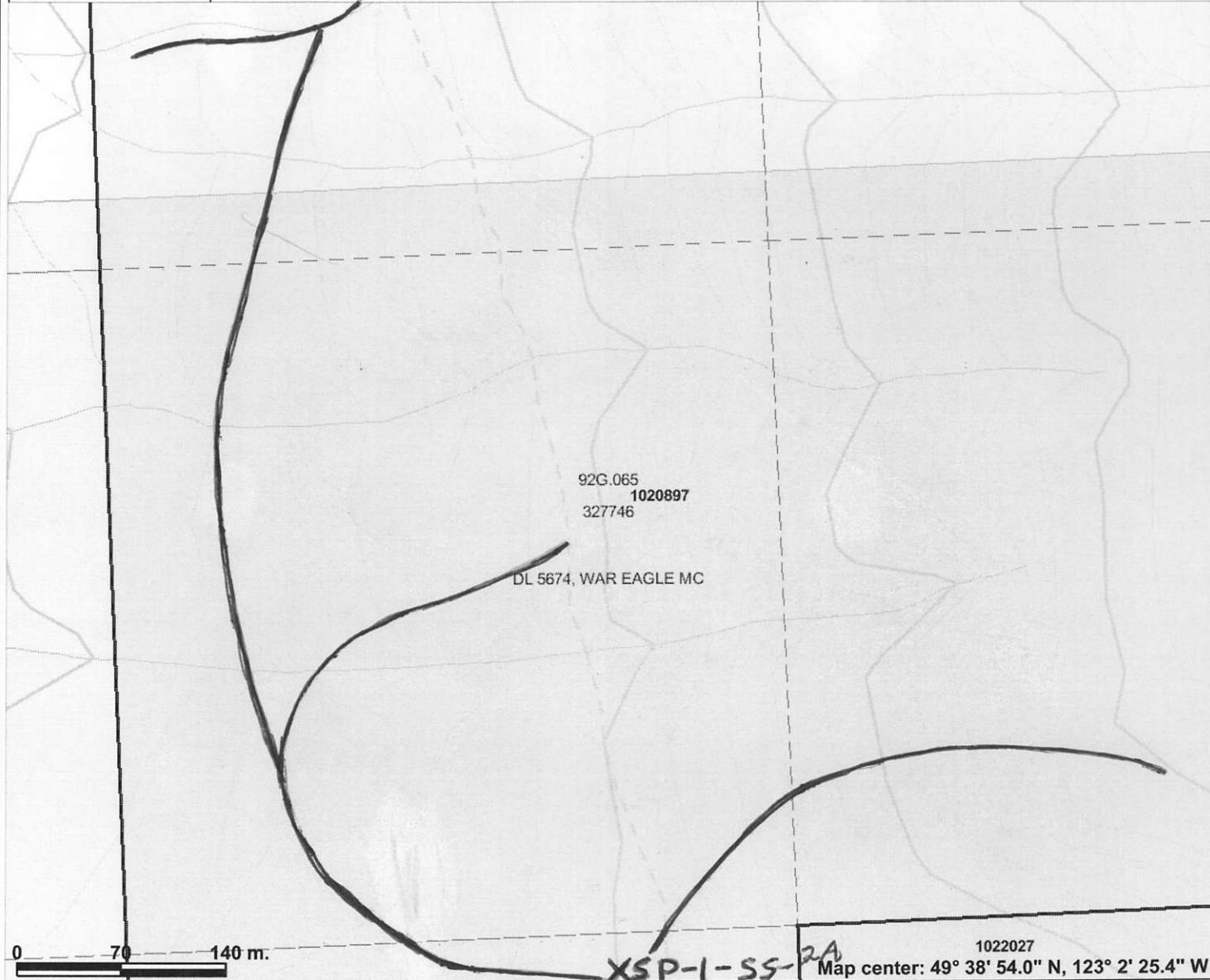
This map is a user generated static output from an Internet mapping site and is for general reference only. Data layers that appear on this map may or may not be accurate, current, or otherwise reliable. THIS MAP IS NOT TO BE USED FOR NAVIGATION.



Legend

- Indian Reserves
- National Parks
- Conservancy Areas
- Parks
- Federal Transfer Lands
- MTO Grid (MTO)
- Mineral Tenure (current)
- Mineral Claim
- Mineral Lease
- Mineral Reserves (current)
- Placer Claim Designation
- Placer Lease Designation
- No Staking Reserve
- Conditional Reserve
- Release Required Reserve
- Surface Restriction
- Recreation Area
- Others
- First Nations Treaty Related Lands
- First Nations Treaty Lands
- Integrated Cadastral Fabric
- Survey Parcels
- BCGS Grid
- Contours (TRIM)
- Contour - Index
- Contour - Index.Indefinite
- Contour - Index.Depression
- Contour - Index.Depression Indefinite
- Contour - Intermediate
- Contour - Intermediate.Indefinite
- Contour - Intermediate.Depression

Scale: 1:4,076



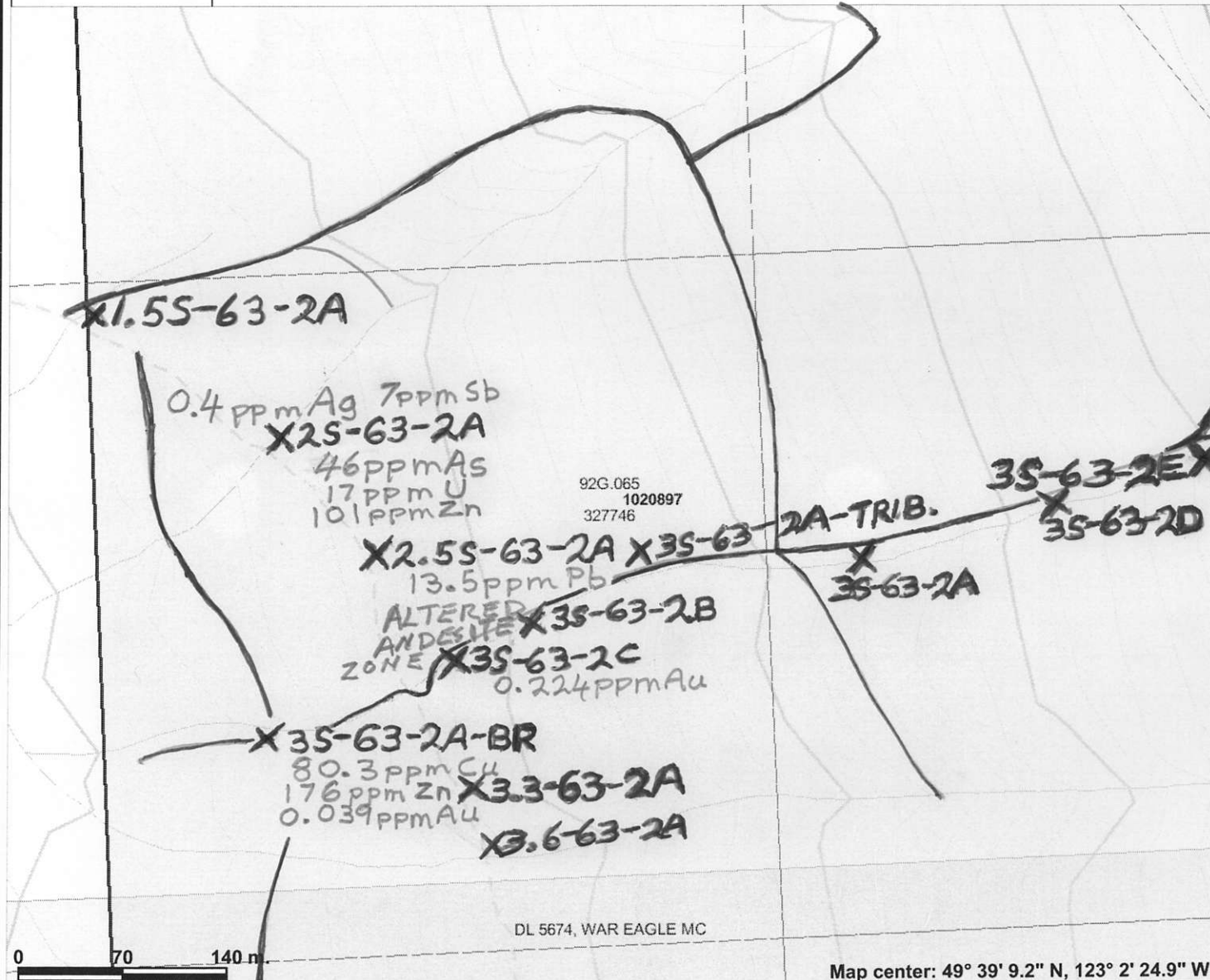
This map is a user generated static output from an Internet mapping site and is for general reference only. Data layers that appear on this map may or may not be accurate, current, or otherwise reliable. THIS MAP IS NOT TO BE USED FOR NAVIGATION.



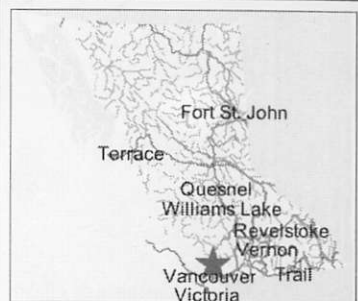
Legend

- Indian Reserves
- National Parks
- Conservancy Areas
- Parks
- Federal Transfer Lands
- MTO Grid (MTO)
- Mineral Tenure (current)
 - Mineral Claim
 - Mineral Lease
- Mineral Reserves (current)
 - Placer Claim Designation
 - Placer Lease Designation
 - No Staking Reserve
 - Conditional Reserve
 - Release Required Reserve
 - Surface Restriction
 - Recreation Area
 - Others
 - First Nations Treaty Related Lands
- First Nations Treaty Lands
- Integrated Cadastral Fabric
- Survey Parcels
- BCGS Grid
- Contours (TRIM)
 - Contour - Index
 - Contour - Index.Indefinite
 - Contour - Index.Depression
 - Contour - Index.Depression Indefinite
 - Contour - Intermediate
 - Contour - Intermediate.Indefinite
 - Contour - Intermediate.Depression

Scale: 1:4,076



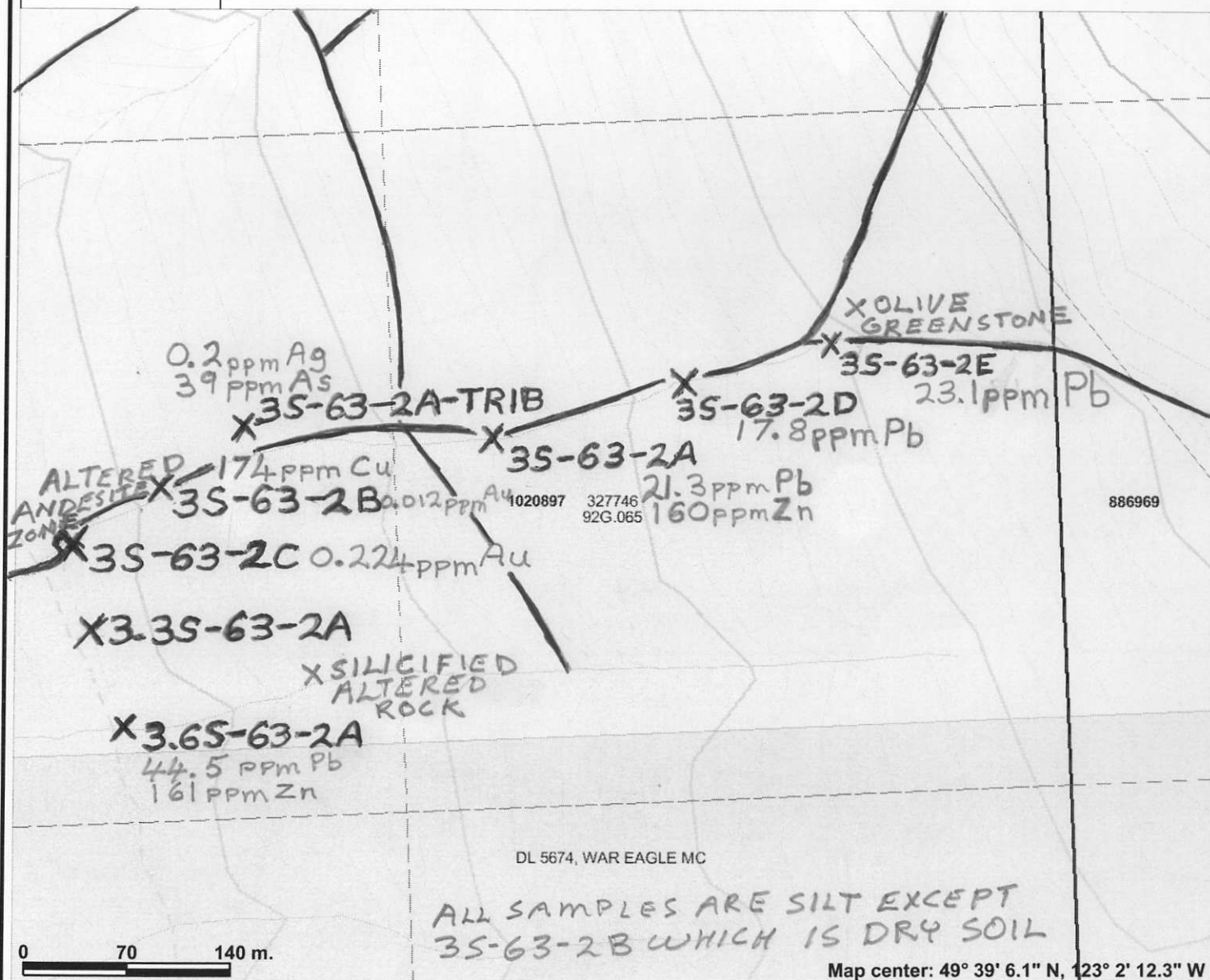
This map is a user generated static output from an Internet mapping site and is for general reference only. Data layers that appear on this map may or may not be accurate, current, or otherwise reliable. THIS MAP IS NOT TO BE USED FOR NAVIGATION.



Legend

- Indian Reserves
- National Parks
- Conservancy Areas
- Parks
- Federal Transfer Lands
- MTO Grid (MTO)
- Mineral Tenure (current)
- Mineral Claim
- Mineral Lease
- Mineral Reserves (current)**
 - Placer Claim Designation
 - Placer Lease Designation
 - No Staking Reserve
 - Conditional Reserve
 - Release Required Reserve
 - Surface Restriction
 - Recreation Area
 - Others
 - First Nations Treaty Related Lands
- First Nations Treaty Lands
- Integrated Cadastral Fabric
- Survey Parcels
- BCGS Grid
- Contours (TRIM)
 - Contour - Index
 - Contour - Index.Indefinite
 - Contour - Index.Depression
 - Contour - Index.Depression Indefinite
 - Contour - Intermediate
 - Contour - Intermediate.Indefinite
 - Contour - Intermediate.Depression

Scale: 1:4,076



This map is a user generated static output from an Internet mapping site and is for general reference only. Data layers that appear on this map may or may not be accurate, current, or otherwise reliable. THIS MAP IS NOT TO BE USED FOR NAVIGATION.

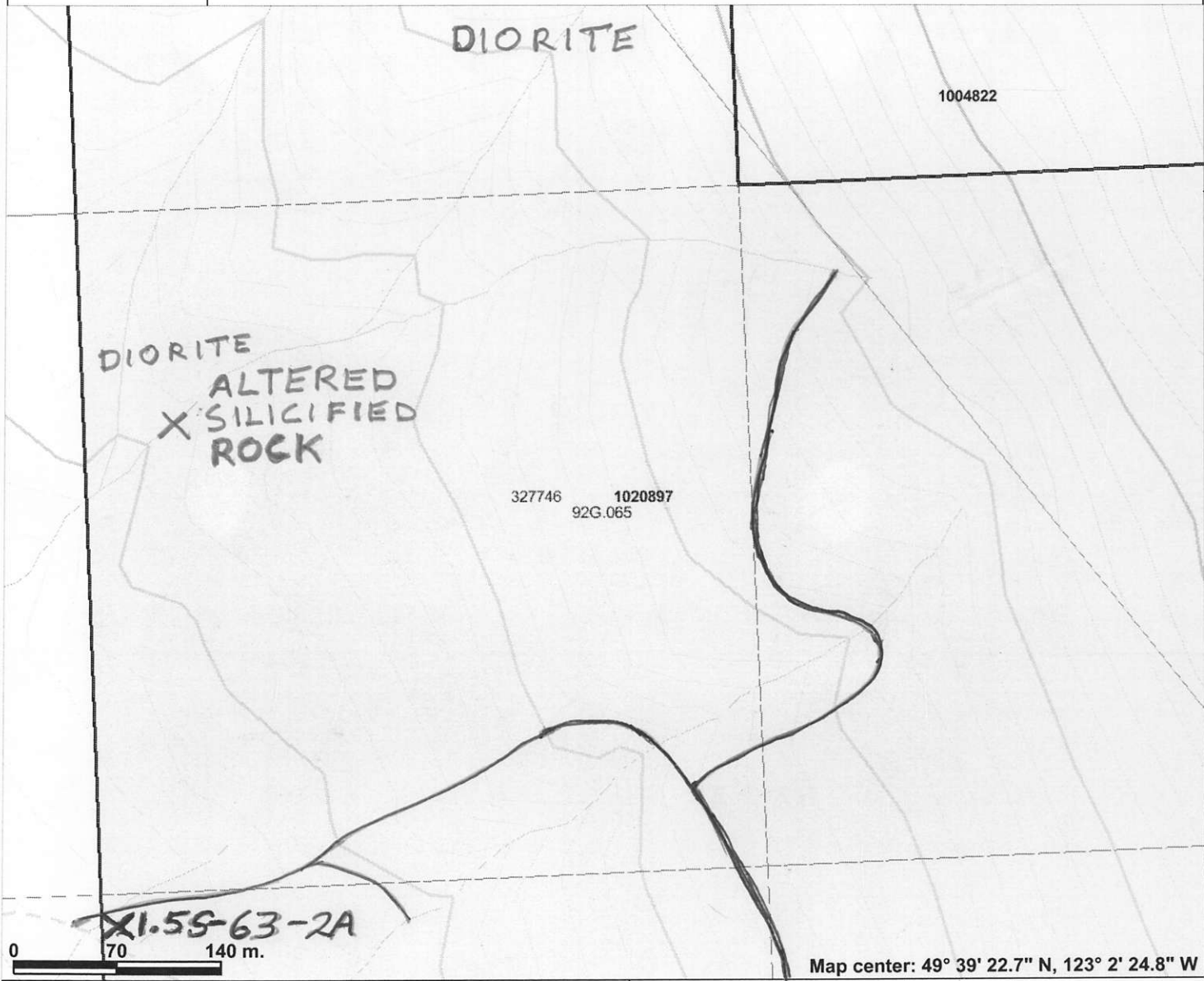
24a



Legend

- Indian Reserves
- National Parks
- Conservancy Areas
- Parks
- Federal Transfer Lands
- MTO Grid (MTO)
- Mineral Tenure (current)
- Mineral Claim
- Mineral Lease
- Mineral Reserves (current)
- Placer Claim Designation
- Placer Lease Designation
- No Staking Reserve
- Conditional Reserve
- Release Required Reserve
- Surface Restriction
- Recreation Area
- Others
- First Nations Treaty Related Lands
- First Nations Treaty Lands
- Integrated Cadastral Fabric
- Survey Parcels
- BCGS Grid
- Contours (TRIM)
- Contour - Index
- Contour - Index.Indefinite
- Contour - Index.Depression
- Contour - Index.Depression Indefinite
- Contour - Intermediate
- Contour - Intermediate.Indefinite
- Contour - Intermediate.Depression

Scale: 1:4,076



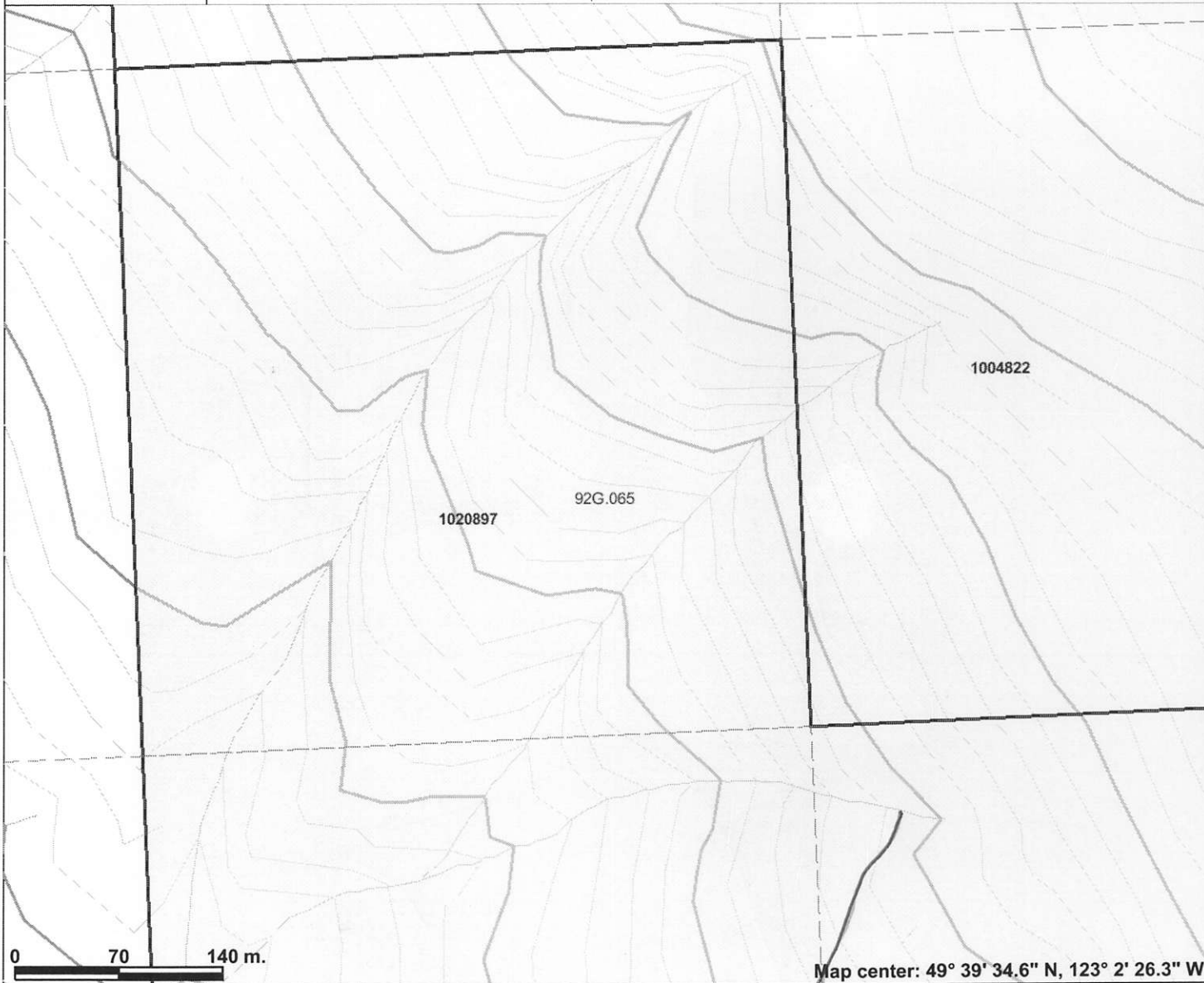
This map is a user generated static output from an Internet mapping site and is for general reference only. Data layers that appear on this map may or may not be accurate, current, or otherwise reliable. THIS MAP IS NOT TO BE USED FOR NAVIGATION.



Legend

- Indian Reserves
- National Parks
- Conservancy Areas
- Parks
- Federal Transfer Lands
- MTO Grid (MTO)
- Mineral Tenure (current)
 - Mineral Claim
 - Mineral Lease
 - First Nations Treaty Related Lands
- First Nations Treaty Lands
- Integrated Cadastral Fabric
- BCGS Grid
- Contours (TRIM)
 - ✓ Contour - Index
 - ✓ Contour - Index.Indefinite
 - ✓ Contour - Index.Depression
 - ✓ Contour - Index.Depression Indefinite
 - ✓ Contour - Intermediate
 - ✓ Contour - Intermediate.Indefinite
 - ✓ Contour - Intermediate.Depression
 - ✓ Contour - Intermediate.Depression Indefinite
- ✓ Area of Exclusion
- ✓ Area of Indefinite Contours
- Annotation (1:20K)
 - Transportation - Points (TRIM)
 - Ⓜ Helipad
 - Transportation - Lines (TRIM)
 - ✈ Airfield

Scale: 1:4,076



This map is a user generated static output from an Internet mapping site and is for general reference only. Data layers that appear on this map may or may not be accurate, current, or otherwise reliable. THIS MAP IS NOT TO BE USED FOR NAVIGATION.



Legend

- Indian Reserves
- National Parks
- Conservancy Areas
- Parks
- Federal Transfer Lands
- MTO Grid (MTO)
- Mineral Tenure (current)
 - Mineral Claim
 - Mineral Lease
 - First Nations Treaty Related Lands
- First Nations Treaty Lands
- Integrated Cadastral Fabric
- BCGS Grid
- Contours (TRIM)
 - ~ Contour - Index
 - ~ Contour - Index.Indefinite
 - ~ Contour - Index.Depression
 - ~ Contour - Index.Depression Indefinite
 - ~ Contour - Intermediate
 - ~ Contour - Intermediate.Indefinite
 - ~ Contour - Intermediate.Depression
 - ~ Contour - Intermediate.Depression Indefinite
- ~ Area of Exclusion
- ~ Area of Indefinite Contours
- Annotation (1:20K)
- Transportation - Points (TRIM)
 - ⊙ Helipad
 - Transportation - Lines (TRIM)
- ~ Airfield

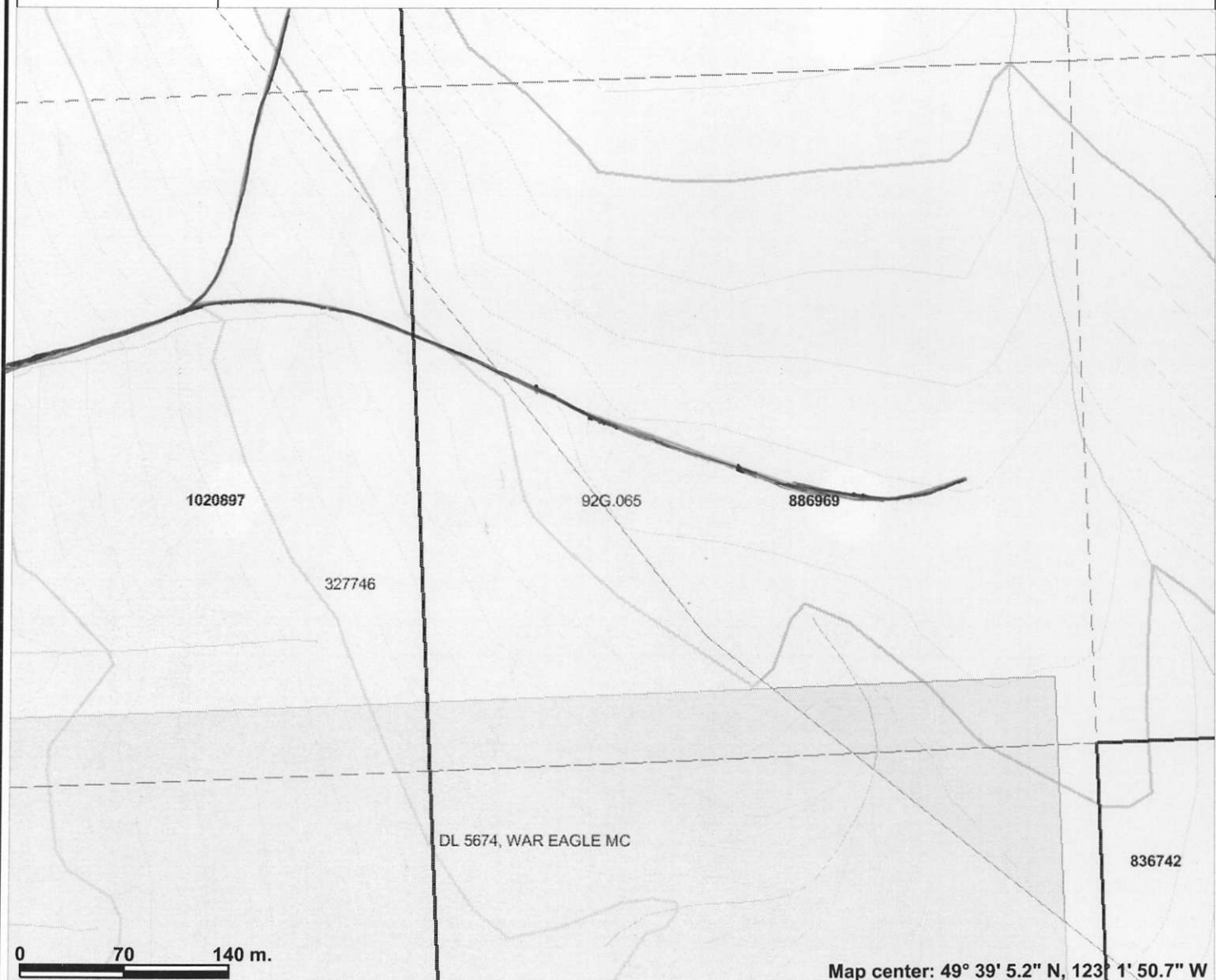


This map is a user generated static output from an Internet mapping site and is for general reference only. Data layers that appear on this map may or may not be accurate, current, or otherwise reliable. THIS MAP IS NOT TO BE USED FOR NAVIGATION.



Legend

- Indian Reserves
- National Parks
- Conservancy Areas
- Parks
- Federal Transfer Lands
- MTO Grid (MTO)
- Mineral Tenure (current)
- Mineral Claim
- Mineral Lease
- Mineral Reserves (current)**
 - Placer Claim Designation
 - Placer Lease Designation
 - No Staking Reserve
 - Conditional Reserve
 - Release Required Reserve
 - Surface Restriction
 - Recreation Area
 - Others
- First Nations Treaty Related Lands
- First Nations Treaty Lands
- Integrated Cadastral Fabric
- Survey Parcels
- BCGS Grid
- Contours (TRIM)
 - Contour - Index
 - Contour - Index.Indefinite
 - Contour - Index.Depression
 - Contour - Index.Depression Indefinite
 - Contour - Intermediate
 - Contour - Intermediate.Indefinite
 - Contour - Intermediate.Depression



This map is a user generated static output from an Internet mapping site and is for general reference only. Data layers that appear on this map may or may not be accurate, current, or otherwise reliable. THIS MAP IS NOT TO BE USED FOR NAVIGATION.

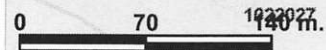
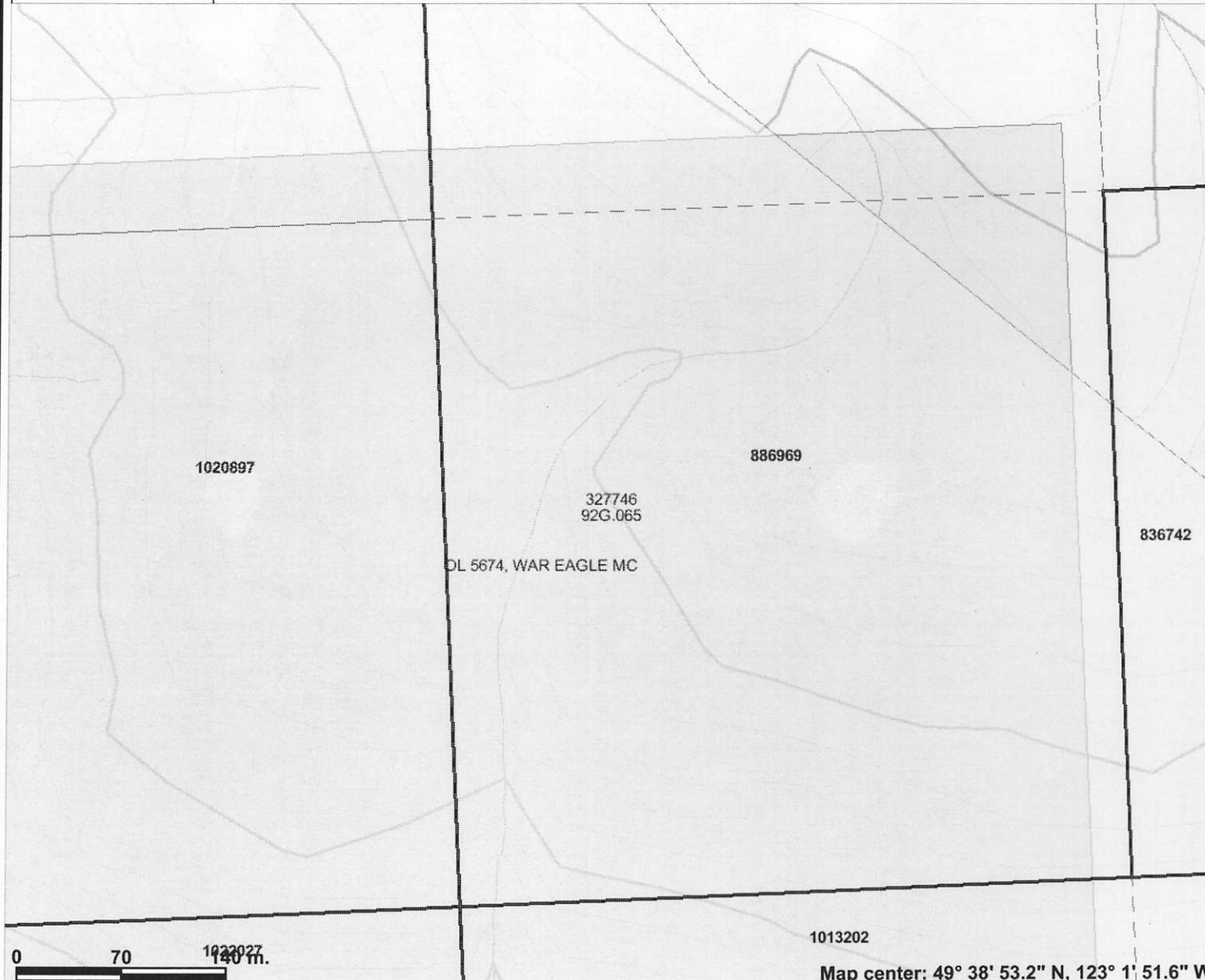


Legend

- Indian Reserves
- National Parks
- Conservancy Areas
- Parks
- Federal Transfer Lands
- MTO Grid (MTO)
- Mineral Tenure (current)
- Mineral Claim
- Mineral Lease
- Mineral Reserves (current)
- Placer Claim Designation
- Placer Lease Designation
- No Staking Reserve
- Conditional Reserve
- Release Required Reserve
- Surface Restriction
- Recreation Area
- Others
- First Nations Treaty Related Lands
- First Nations Treaty Lands
- Integrated Cadastral Fabric
- Survey Parcels
- BCGS Grid
- Contours (TRIM)
- Contour - Index
- Contour - Index.Indefinite
- Contour - Index.Depression
- Contour - Index.Depression Indefinite
- Contour - Intermediate
- Contour - Intermediate.Indefinite
- Contour - Intermediate.Depression

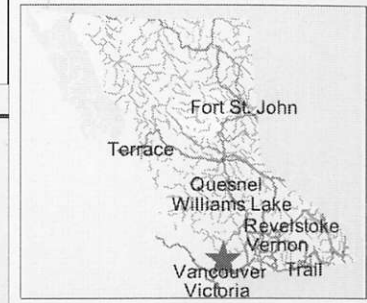
N

Scale: 1:4,076



Map center: 49° 38' 53.2" N, 123° 1' 51.6" W

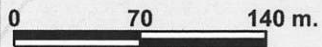
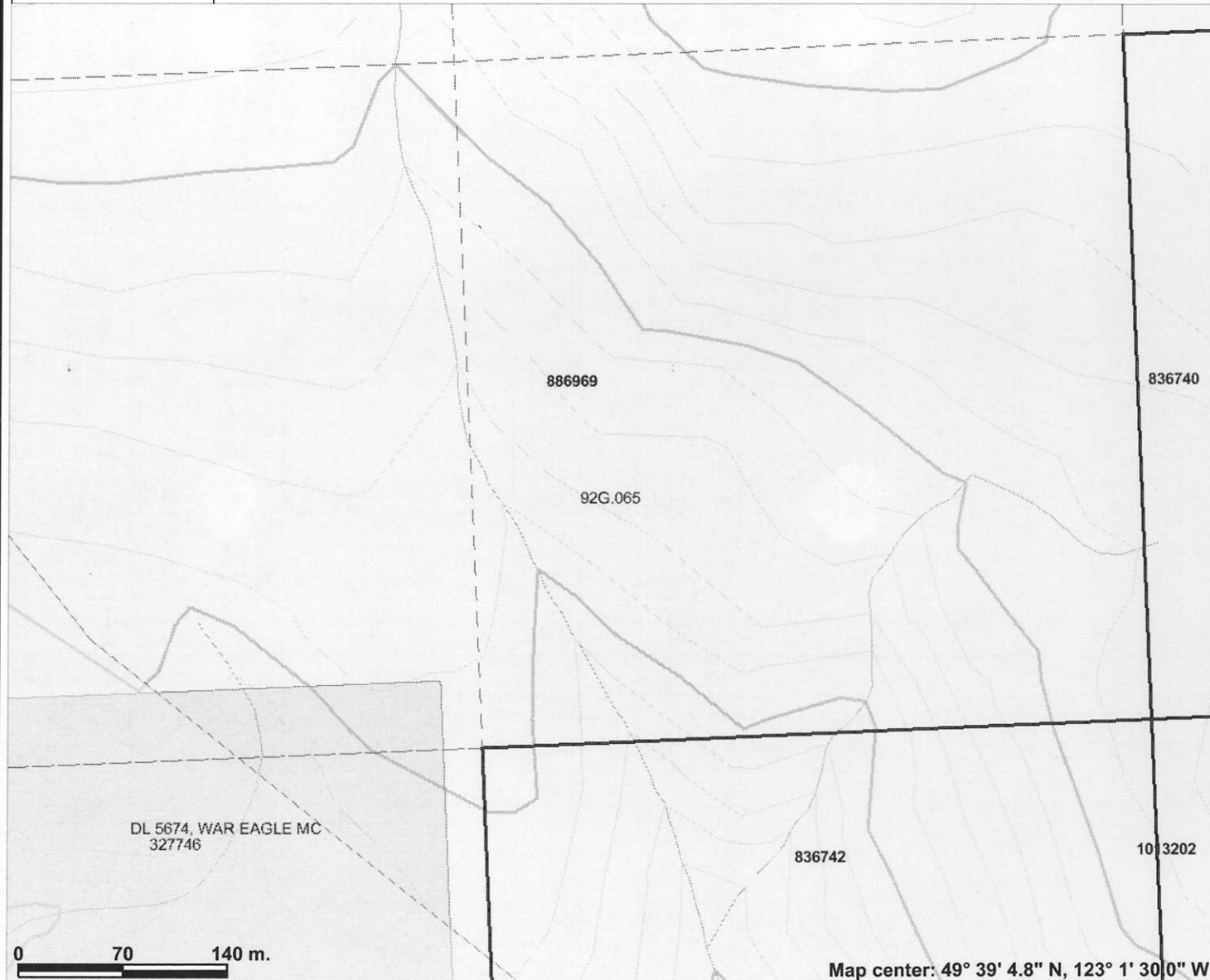
This map is a user generated static output from an Internet mapping site and is for general reference only. Data layers that appear on this map may or may not be accurate, current, or otherwise reliable. THIS MAP IS NOT TO BE USED FOR NAVIGATION.



Legend

- Indian Reserves
- National Parks
- Conservancy Areas
- Parks
- Federal Transfer Lands
- MTO Grid (MTO)
- Mineral Tenure (current)
 - Mineral Claim
 - Mineral Lease
- Mineral Reserves (current)
 - Placer Claim Designation
 - Placer Lease Designation
 - No Staking Reserve
 - Conditional Reserve
 - Release Required Reserve
 - Surface Restriction
 - Recreation Area
 - Others
- First Nations Treaty Related Lands
 - First Nations Treaty Lands
 - Integrated Cadastral Fabric
 - Survey Parcels
 - BCGS Grid
- Contours (TRIM)
 - Contour - Index
 - Contour - Index.Indefinite
 - Contour - Index.Depression
 - Contour - Index.Depression Indefinite
 - Contour - Intermediate
 - Contour - Intermediate.Indefinite
 - Contour - Intermediate.Depression

Scale: 1:4,076



Map center: 49° 39' 4.8" N, 123° 1' 30.0" W

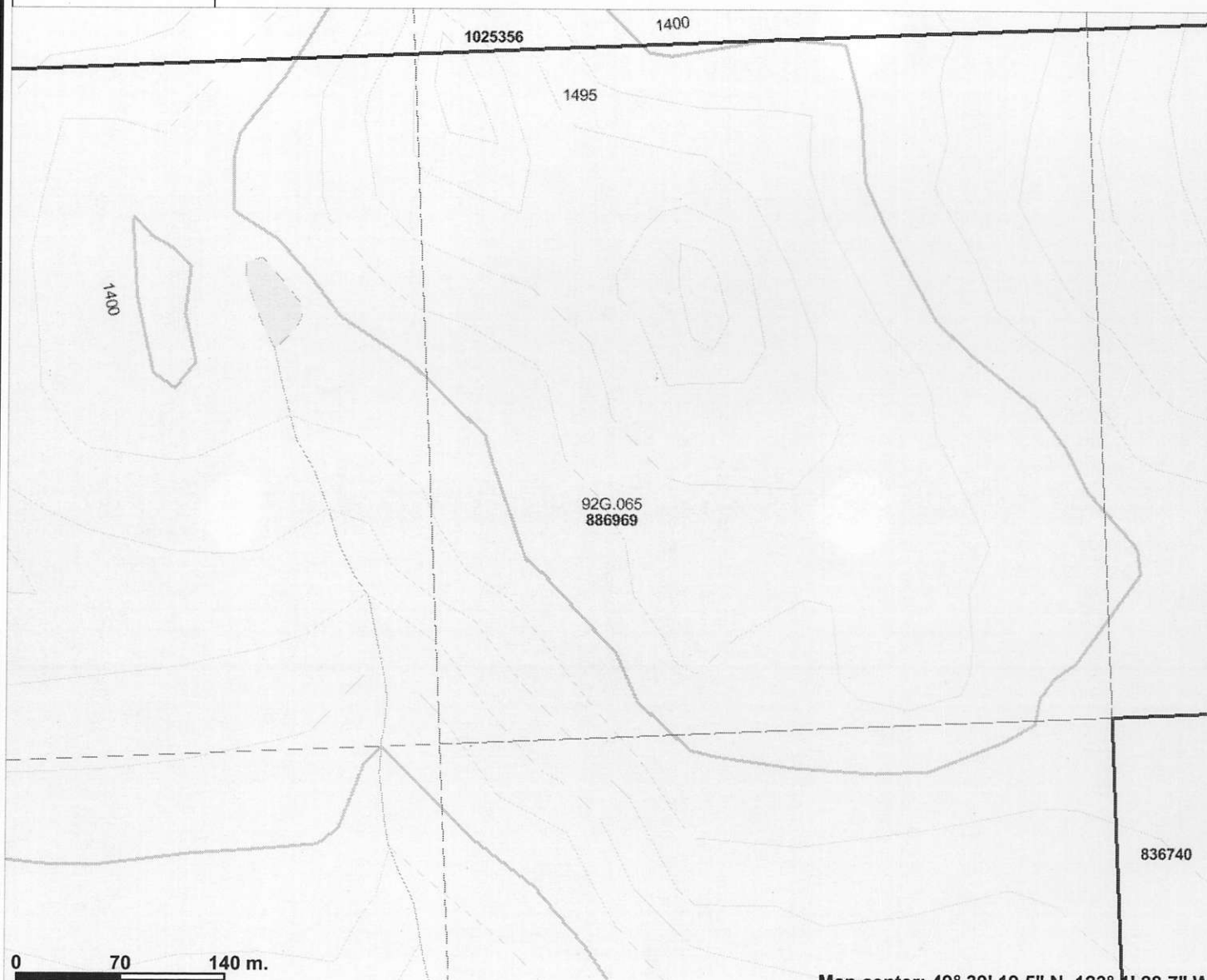
This map is a user generated static output from an Internet mapping site and is for general reference only. Data layers that appear on this map may or may not be accurate, current, or otherwise reliable. THIS MAP IS NOT TO BE USED FOR NAVIGATION.



Legend

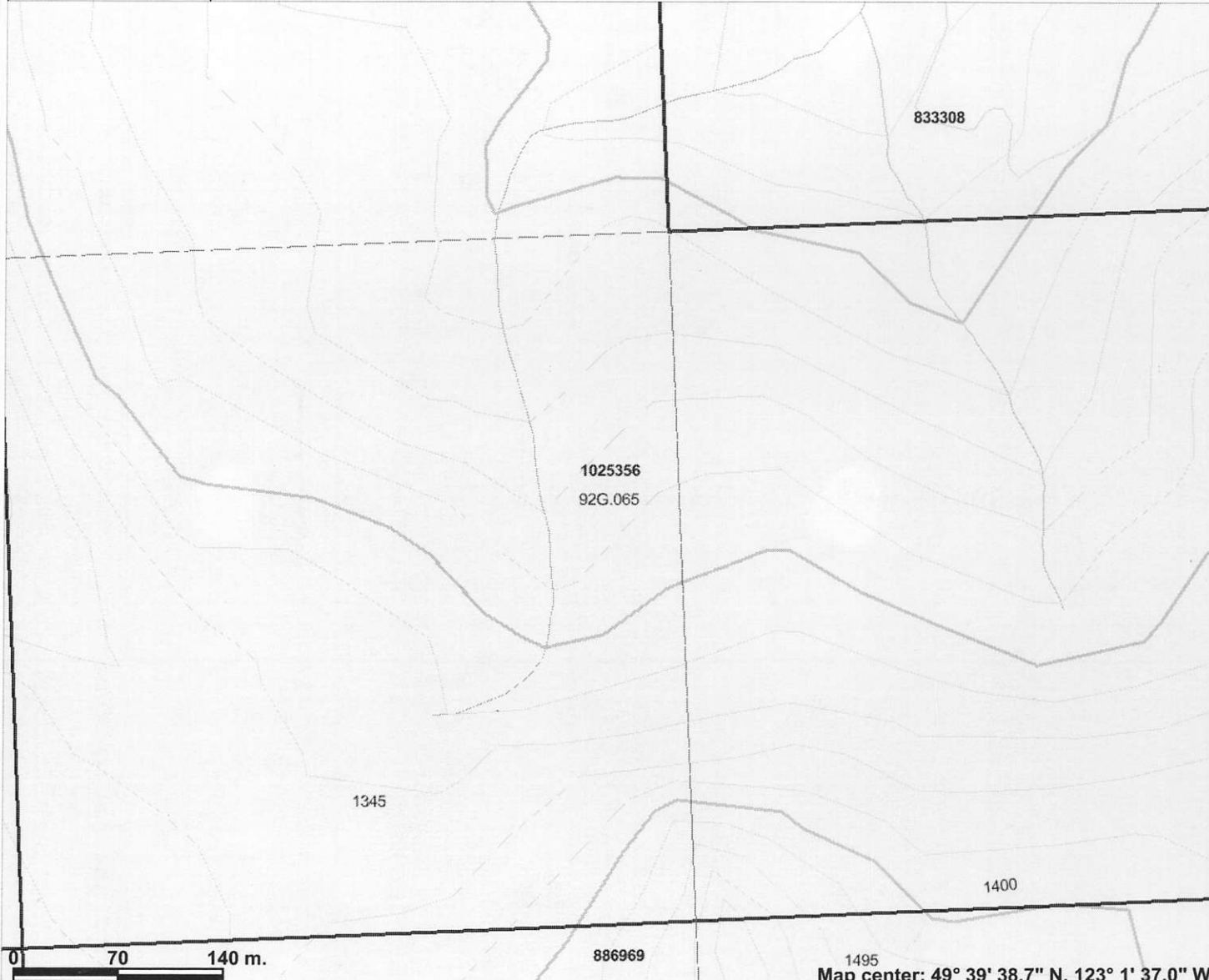
- Indian Reserves
- National Parks
- Conservancy Areas
- Parks
- Federal Transfer Lands
- MTO Grid (MTO)
- Mineral Tenure (current)
- Mineral Claim
- Mineral Lease
- First Nations Treaty Related Lands
- First Nations Treaty Lands
- Integrated Cadastral Fabric
- BCGS Grid
- Contours (TRIM)
- Contour - Index
- Contour - Index.Indefinite
- Contour - Index.Depression
- Contour - Index.Depression Indefinite
- Contour - Intermediate
- Contour - Intermediate.Indefinite
- Contour - Intermediate.Depression
- Contour - Intermediate.Depression Indefinite
- Area of Exclusion
- Area of Indefinite Contours
- Annotation (1:20K)
- Transportation - Points (TRIM)
- Helipad
- Transportation - Lines (TRIM)
- Airfield

Scale: 1:4,076



Map center: 49° 39' 19.5" N, 123° 1' 28.7" W

This map is a user generated static output from an Internet mapping site and is for general reference only. Data layers that appear on this map may or may not be accurate, current, or otherwise reliable. THIS MAP IS NOT TO BE USED FOR NAVIGATION.

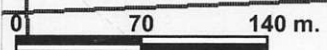


Legend

- Indian Reserves
- National Parks
- Conservancy Areas
- Parks
- Federal Transfer Lands
- MTO Grid (MTO)
- Mineral Tenure (current)
 - Mineral Claim
 - Mineral Lease
 - First Nations Treaty Related Lands
- First Nations Treaty Lands
- Integrated Cadastral Fabric
- BCGS Grid
- Contours (TRIM)
 - Contour - Index
 - Contour - Index.Indefinite
 - Contour - Index.Depression
 - Contour - Index.Depression Indefinite
 - Contour - Intermediate
 - Contour - Intermediate.Indefinite
 - Contour - Intermediate.Depression
 - Contour - Intermediate.Depression Indefinite
- Area of Exclusion
- Area of Indefinite Contours
- Annotation (1:20K)
- Transportation - Points (TRIM)
 - Helipad
 - Transportation - Lines (TRIM)
- Airfield

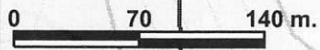


Scale: 1:4,076



Map center: 49° 39' 38.7" N, 123° 1' 37.0" W

This map is a user generated static output from an Internet mapping site and is for general reference only. Data layers that appear on this map may or may not be accurate, current, or otherwise reliable. THIS MAP IS NOT TO BE USED FOR NAVIGATION.



Map center: 49° 39' 51.7" N, 123° 1' 41.3" W

This map is a user generated static output from an Internet mapping site and is for general reference only. Data layers that appear on this map may or may not be accurate, current, or otherwise reliable. THIS MAP IS NOT TO BE USED FOR NAVIGATION.



Legend

- Indian Reserves
- National Parks
- Conservancy Areas
- Parks
- Federal Transfer Lands
- MTO Grid (MTO)
- Mineral Tenure (current)
 - Mineral Claim
 - Mineral Lease
 - First Nations Treaty Related Lands
- First Nations Treaty Lands
- Integrated Cadastral Fabric
- BCGS Grid
- Contours (TRIM)
 - Contour - Index
 - Contour - Index.Indefinite
 - Contour - Index.Depression
 - Contour - Index.Depression Indefinite
 - Contour - Intermediate
 - Contour - Intermediate.Indefinite
 - Contour - Intermediate.Depression
 - Contour - Intermediate.Depression Indefinite
- Area of Exclusion
- Area of Indefinite Contours
- Annotation (1:20K)
- Transportation - Points (TRIM)
 - Helipad
 - Transportation - Lines (TRIM)
- Airfield

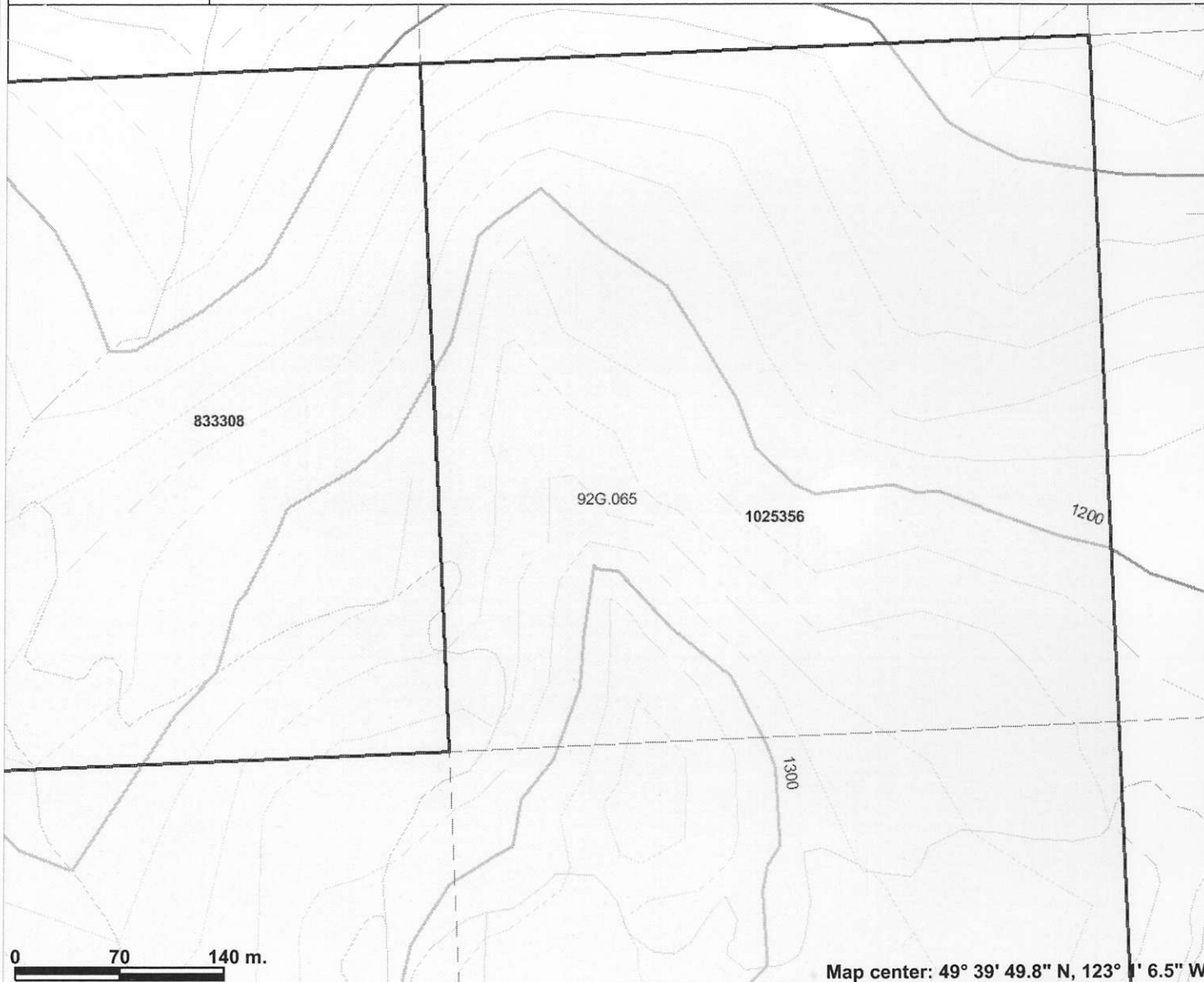


Scale: 1:4,076



Legend

- Indian Reserves
- National Parks
- Conservancy Areas
- Parks
- Federal Transfer Lands
- MTO Grid (MTO)
- Mineral Tenure (current)
 - Mineral Claim
 - Mineral Lease
 - First Nations Treaty Related Lands
- First Nations Treaty Lands
- Integrated Cadastral Fabric
- BCGS Grid
- Contours (TRIM)
 - Contour - Index
 - Contour - Index.Indefinite
 - Contour - Index.Depression
 - Contour - Index.Depression Indefinite
 - Contour - Intermediate
 - Contour - Intermediate.Indefinite
 - Contour - Intermediate.Depression
 - Contour - Intermediate.Depression Indefinite
- Area of Exclusion
- Area of Indefinite Contours
- Annotation (1:20K)
- Transportation - Points (TRIM)
 - Helipad
 - Transportation - Lines (TRIM)
- Airfield



Map center: 49° 39' 49.8" N, 123° 1' 6.5" W



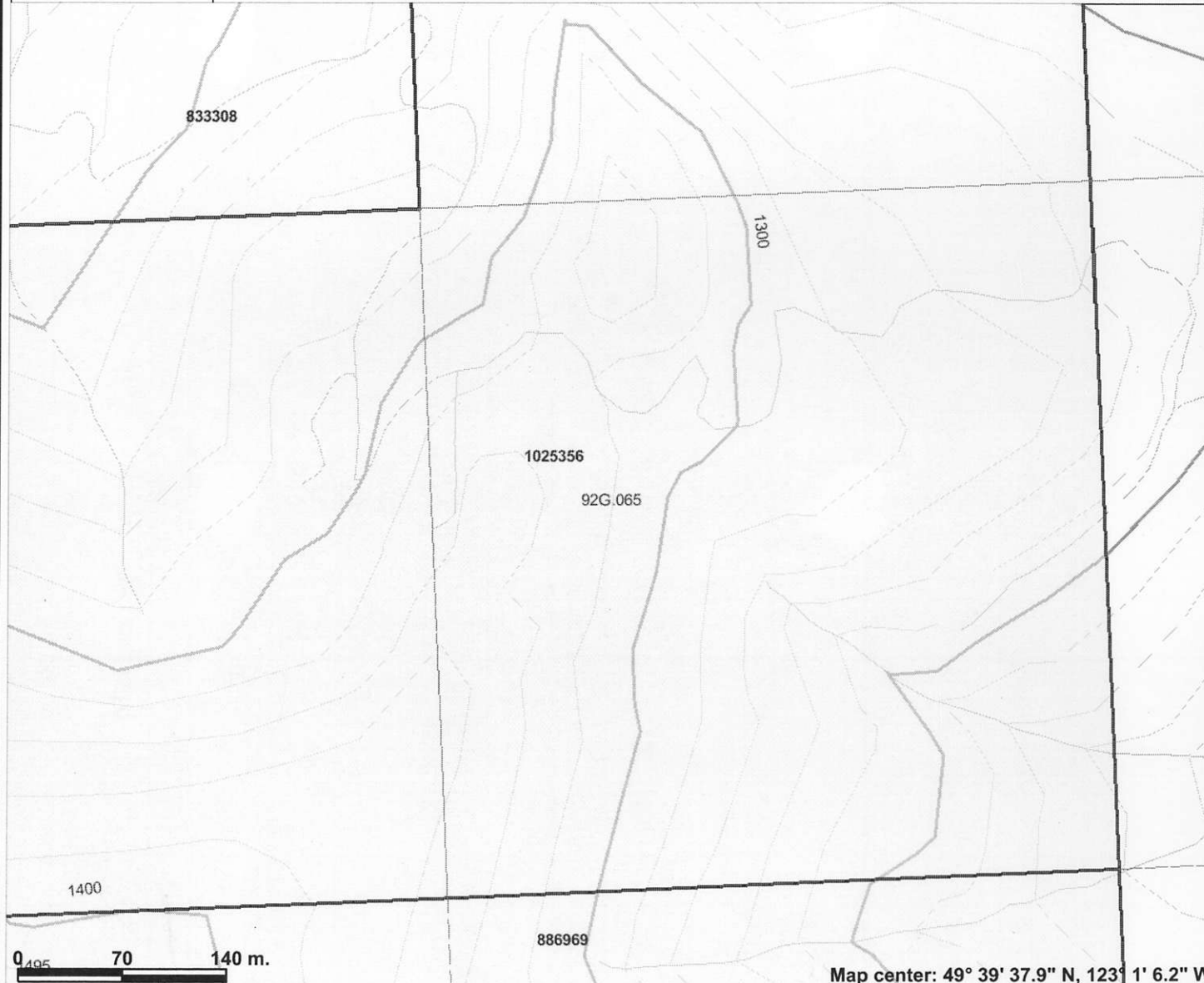
Scale: 1:4,076

This map is a user generated static output from an Internet mapping site and is for general reference only. Data layers that appear on this map may or may not be accurate, current, or otherwise reliable. THIS MAP IS NOT TO BE USED FOR NAVIGATION.

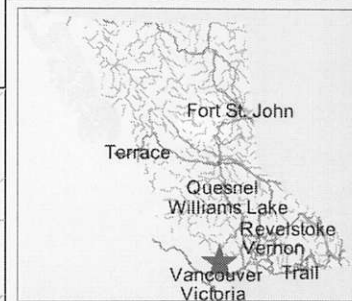


Legend

- Indian Reserves
- National Parks
- Conservancy Areas
- Parks
- Federal Transfer Lands
- MTO Grid (MTO)
- Mineral Tenure (current)
 - Mineral Claim
 - Mineral Lease
 - First Nations Treaty Related Lands
- First Nations Treaty Lands
- Integrated Cadastral Fabric
- BCGS Grid
- Contours (TRIM)
 - ~ Contour - Index
 - ~ Contour - Index.Indefinite
 - ~ Contour - Index.Depression
 - ~ Contour - Index.Depression Indefinite
 - ~ Contour - Intermediate
 - ~ Contour - Intermediate.Indefinite
 - ~ Contour - Intermediate.Depression
 - ~ Contour - Intermediate.Depression Indefinite
- Area of Exclusion
- Area of Indefinite Contours
- Annotation (1:20K)
 - Transportation - Points (TRIM)
 - ⊙ Helipad
 - Transportation - Lines (TRIM)
 - Airfield



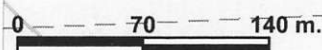
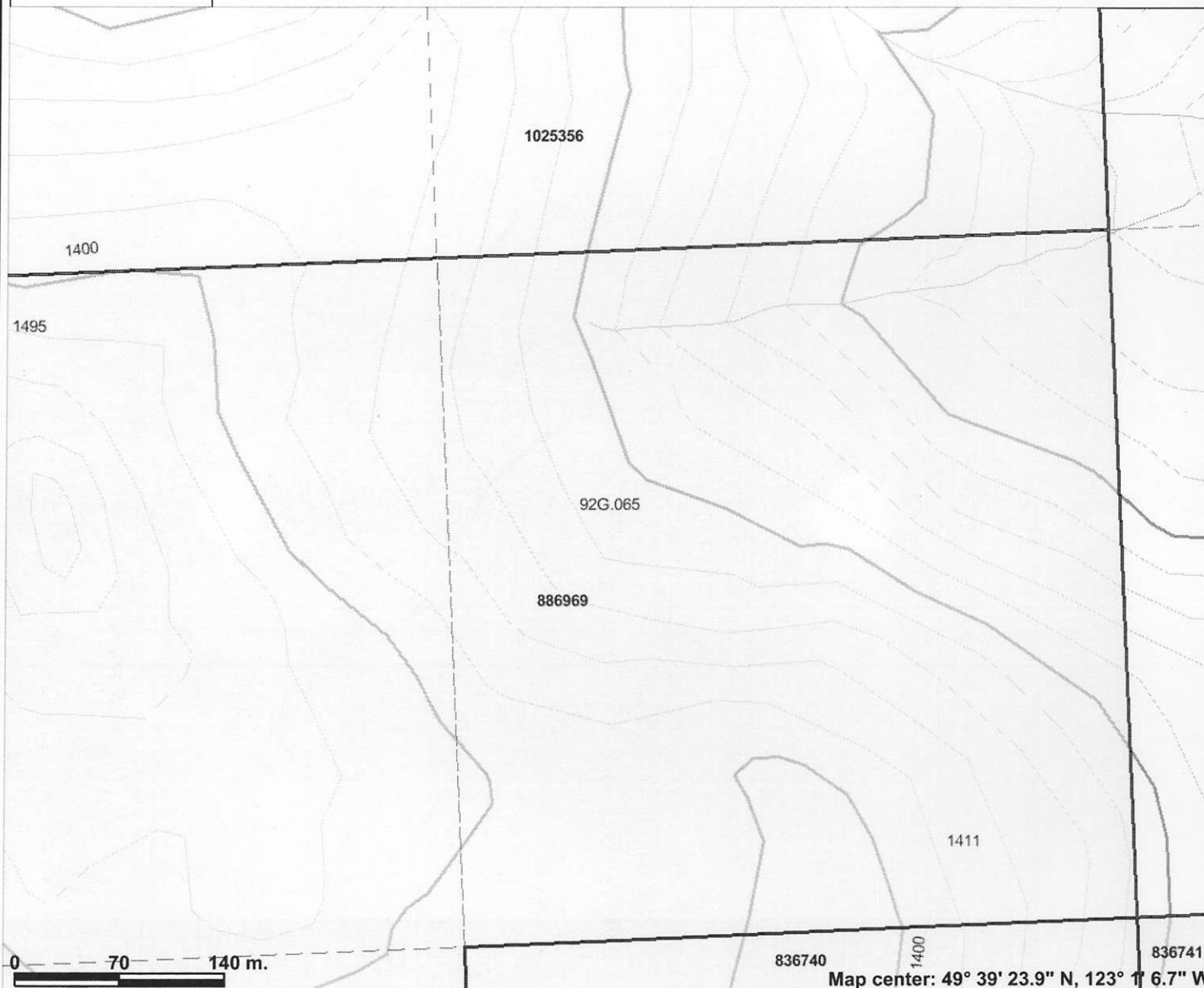
This map is a user generated static output from an Internet mapping site and is for general reference only. Data layers that appear on this map may or may not be accurate, current, or otherwise reliable. THIS MAP IS NOT TO BE USED FOR NAVIGATION.



Legend

- Indian Reserves
- National Parks
- Conservancy Areas
- Parks
- Federal Transfer Lands
- MTO Grid (MTO)
- Mineral Tenure (current)
 - Mineral Claim
 - Mineral Lease
 - First Nations Treaty Related Lands
- First Nations Treaty Lands
- Integrated Cadastral Fabric
- BCGS Grid
- Contours (TRIM)
 - Contour - Index
 - Contour - Index.Indefinite
 - Contour - Index.Depression
 - Contour - Index.Depression Indefinite
 - Contour - Intermediate
 - Contour - Intermediate.Indefinite
 - Contour - Intermediate.Depression
 - Contour - Intermediate.Depression Indefinite
 - Area of Exclusion
 - Area of Indefinite Contours
- Annotation (1:20K)
 - Transportation - Points (TRIM)
 - Helipad
 - Transportation - Lines (TRIM)
 - Airfield

Scale: 1:4,076



Map center: 49° 39' 23.9" N, 123° 16.7" W

This map is a user generated static output from an Internet mapping site and is for general reference only. Data layers that appear on this map may or may not be accurate, current, or otherwise reliable. THIS MAP IS NOT TO BE USED FOR NAVIGATION.