

637000

637500

638000

6327500

6327500

6327000

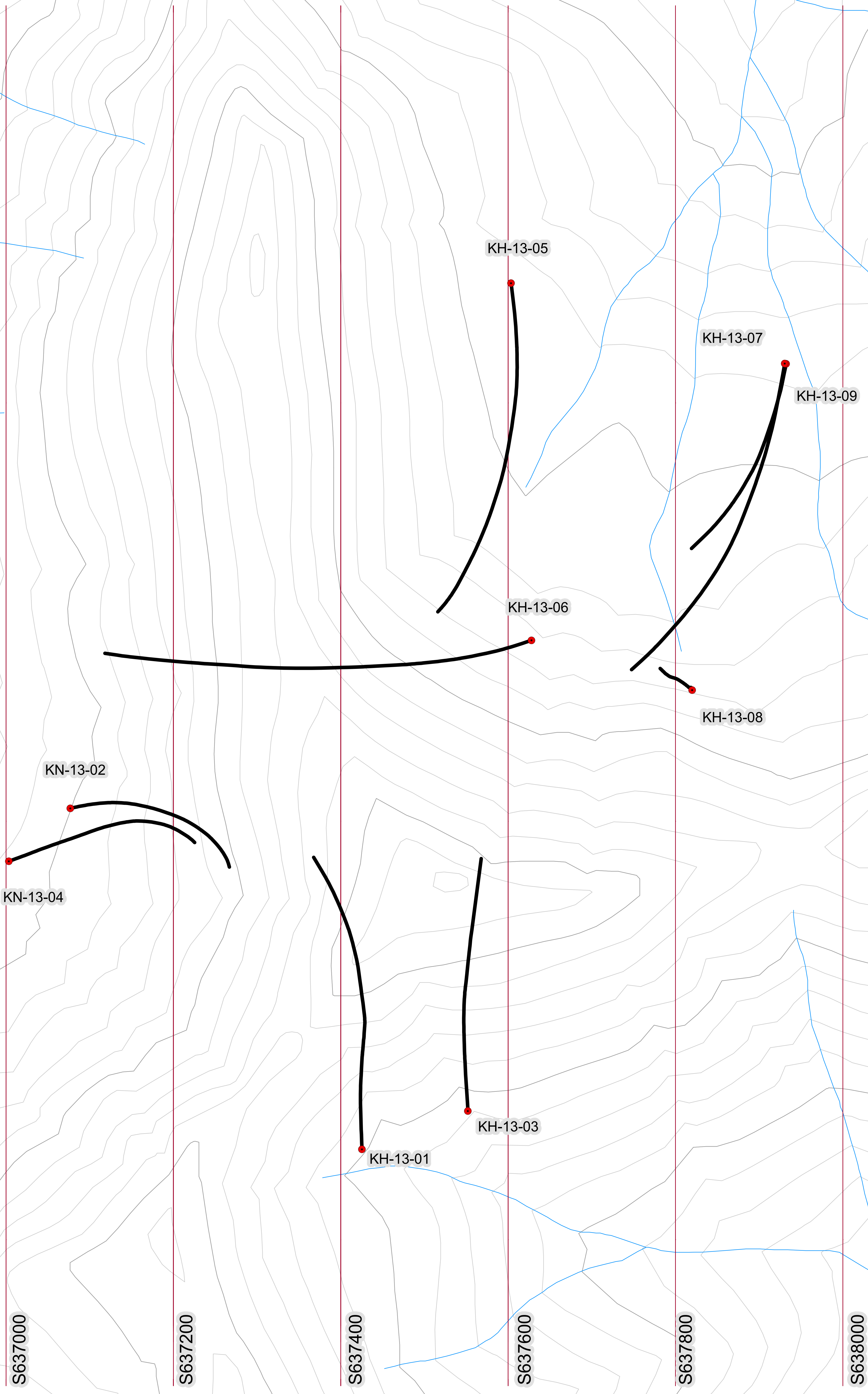
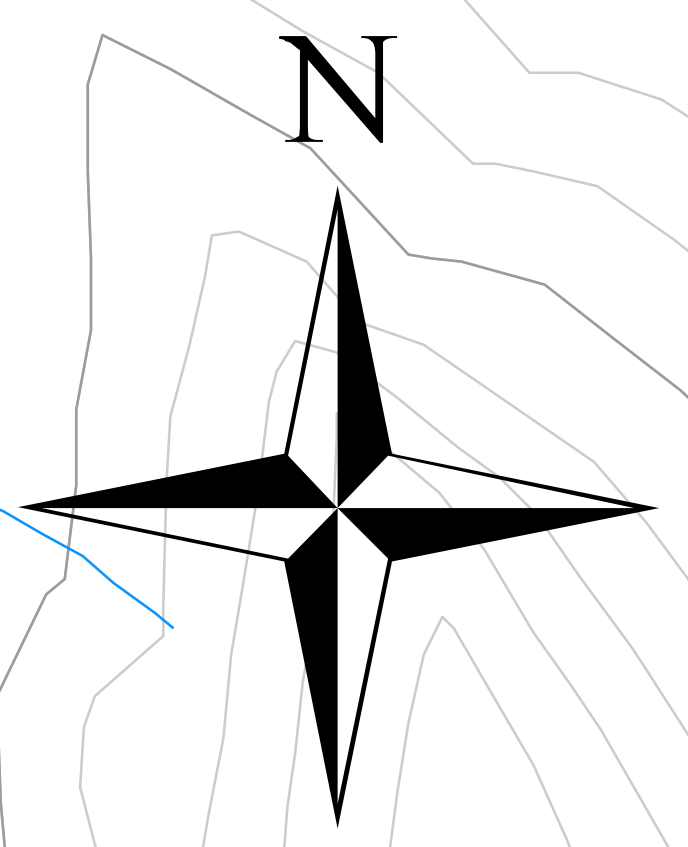
6327000

6326500

6326500

6326000

6326000



Legend

- 2013 Drill Hole Collars
- 2013 Drill hole Traces
- Section Lines



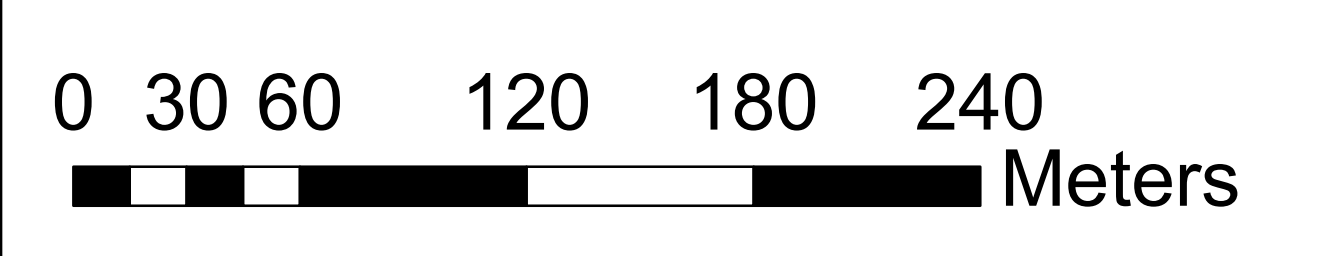
Kemess East 2013 Section Lines

NAD83 UTM Z9

Date: 8/2/2015

Scale: 1:2,000

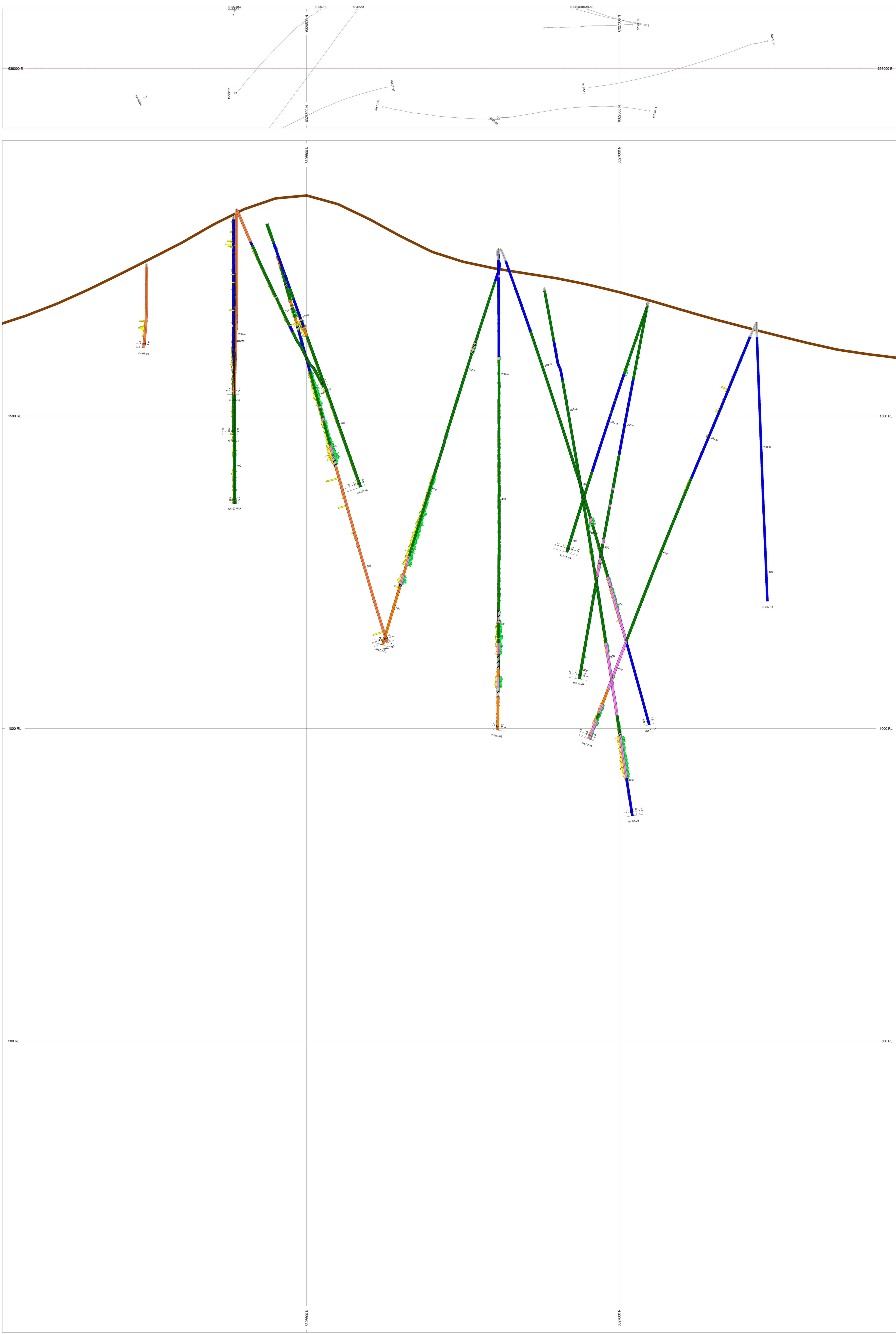
Author: GM



637000

637500

638000



HOLES PLOTTED

TOTAL: 15

KH-07-01	KH-07-01A	KH-07-03	KH-07-08
KH-07-07	KH-07-08	KH-07-11	KH-07-14
KH-07-15	KH-07-16	KH-07-17	KH-07-18
KH-07-25	KH-13-07	KH-13-09	

TOPOGRAPHY

— Topography

BAR GRAPHS

LR	COL	RANGE
Au (ppt)	L	Min 0 Max 2
Cu (ppt)	R	Min 0 Max 2

ROCK CODES

LR_Group	PAT	LABEL	DESCRIPTION
	B	B	Black Lake Intrusion
	B1	B1	Black Lake Intrusion
	F	F	Fault Zone
	H	H	Hazleton Volcanics
	P	P	Post-mineral Dyke
	Ph	Ph	Post-mineral Dyke
	Ps	Ps	Post-mineral Dyke
	Q	Q	Quaternary
	T	T	Takla Volcanics

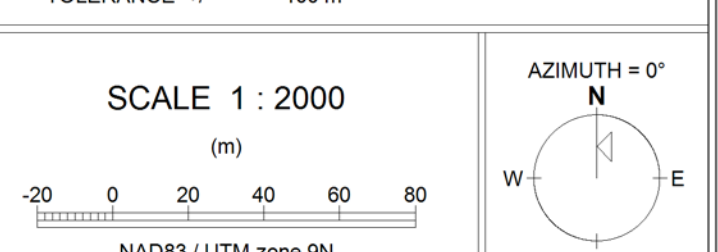
SECTION SPECS:

REF. PT. E. N. 638000 m 6326730 m

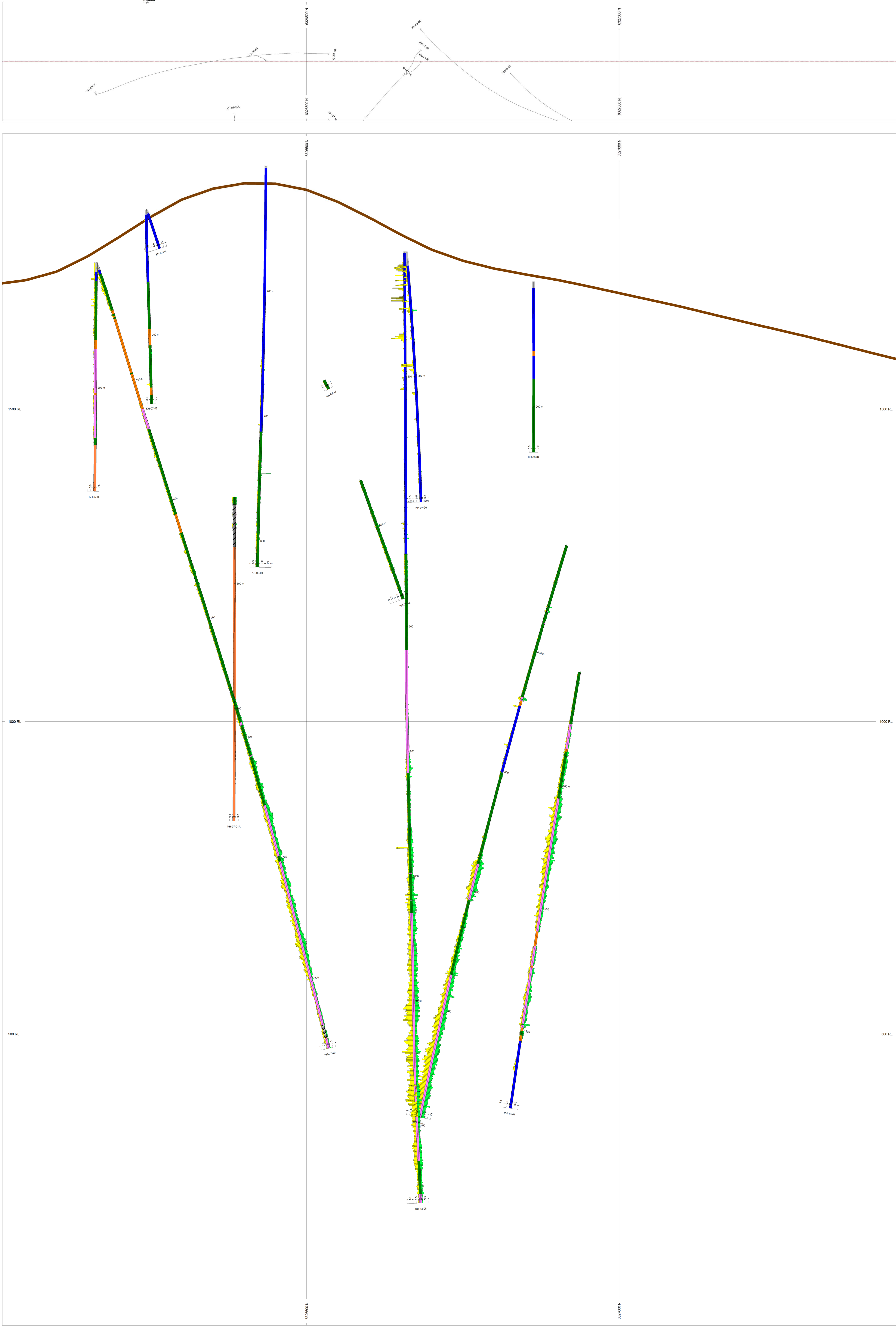
EXTENTS 1434 m 1907 m

SECTION TOP BOT 1941 m 33.45 m

TOLERANCE +/- 100 m



Aurico Metals Inc
 Kemess East
 638000E SECTION
 Date: 2-Aug-2015 Author: GM



HOLES PLOTTED
TOTAL: 13

KH-06-01	KH-06-04	KH-07-01A	KH-07-02
KH-07-04	KH-07-09	KH-07-10	KH-07-16
KH-07-18	KH-07-26	KH-13-07	KH-13-08
KH-13-09			

TOPOGRAPHY
Topography

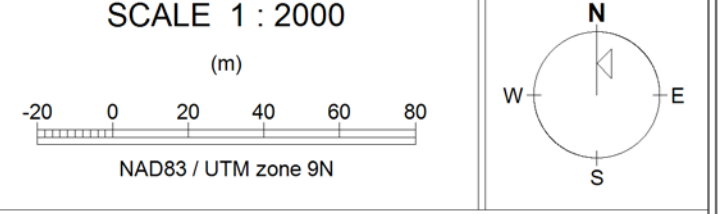
BAR GRAPHS

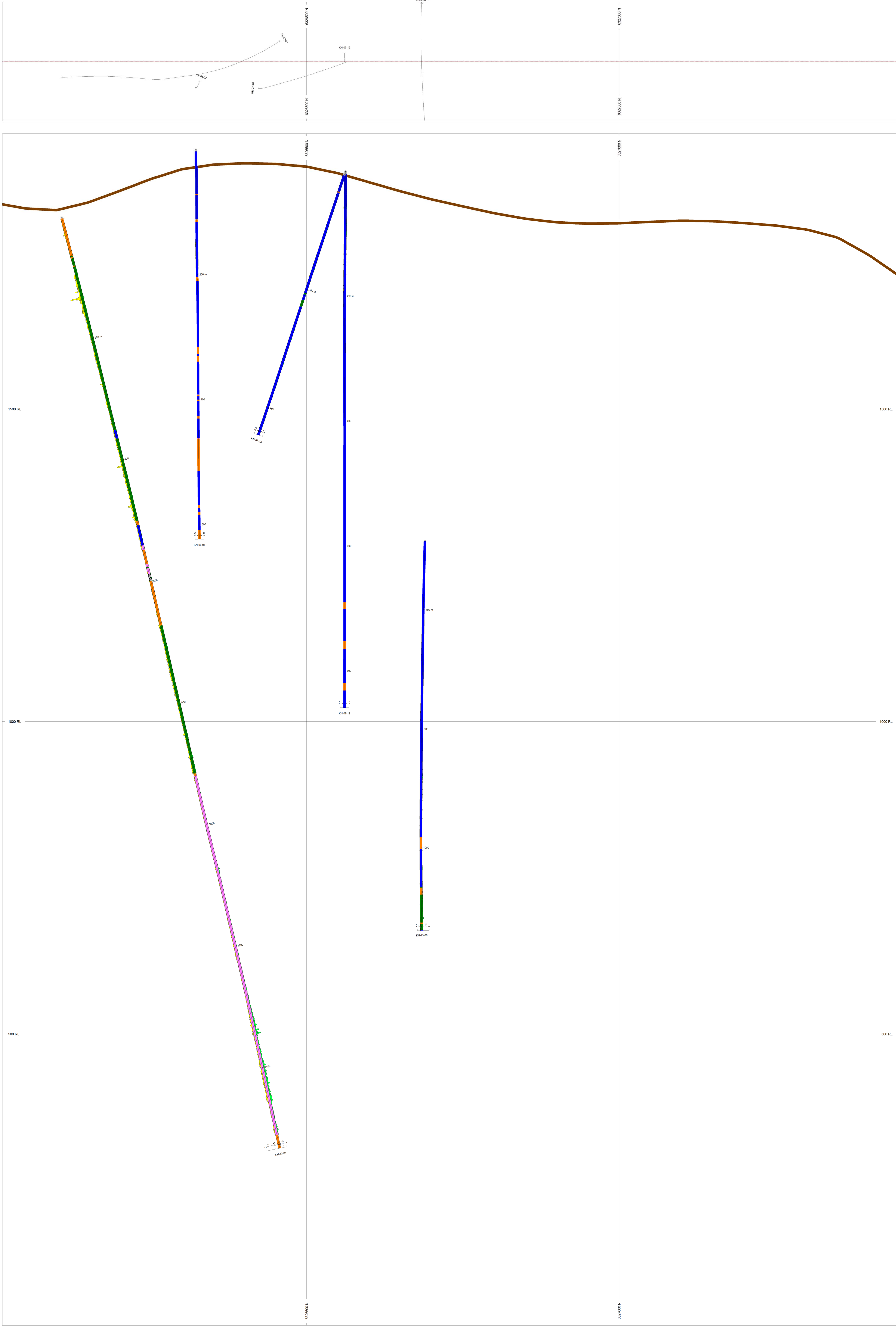
Au (ppb)	L	COL	RANGE
		Min 0	Max 2
Cu (ppb)	R	COL	RANGE
		Min 0	Max 2

ROCK CODES

Upr_Group	PAT	LABEL	DESCRIPTION
	B		Black Lake Intrusion
	B1		Black Lake Intrusion
	B2		Black Lake Intrusion
	F		Fault Zone
	H		Hazleton Volcanics
	P		Post-mineral Dyke
	Pb		Post-mineral Dyke
	Pt		Post-mineral Dyke
	Pr		Post-mineral Dyke
	Ps		Post-mineral Dyke
	Q		Quaternary
	T		Takla Volcanics

SECTION SPECS:
REF. PT. E. N. 637000 m 6326730 m
EXTENTS 1434 m 1907 m
SECTION TOP: BOT 1941 m 33.45 m
TOLERANCE +/- 100 m





HOLES PLOTTED
TOTAL 5
KH-13-01 KH-13-06 KH-06-07 KH-07-12 KH-07-13

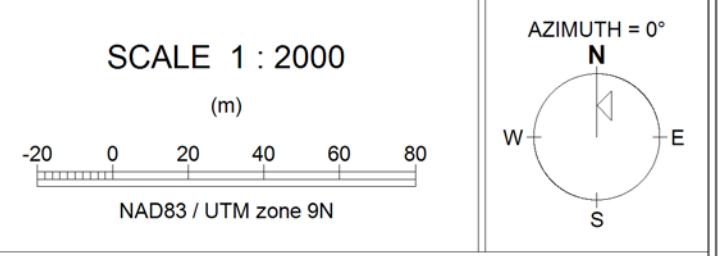
TOPOGRAPHY

BAR GRAPHS L/R COL RANGE

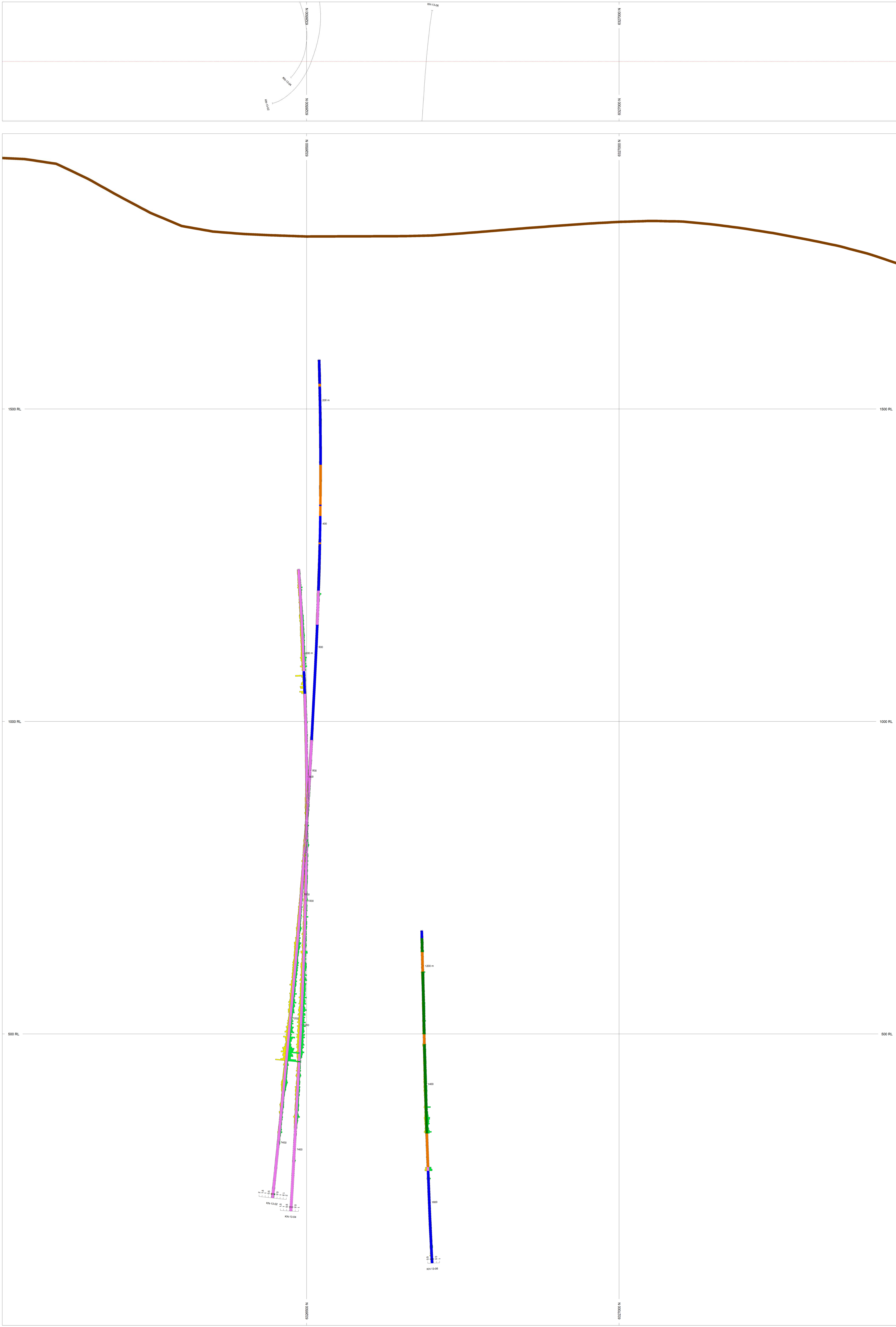
Au (ppt) L Yellow Min 0 Max 2
Cu (ppt) R Green Min 0 Max 2

ROCK CODES	PAT	LABEL	DESCRIPTION
LHP_Group	B	B1	Black Lake Intrusion
	B	B2	Black Lake Intrusion
	F	F	Fault Zone
	H	H	Hazleton Volcanics
	P	P	Post-mineral Dyke
	P	Pb	Post-mineral Dyke
	P	Ph	Post-mineral Dyke
	P	Pi	Post-mineral Dyke
	P	Ps	Post-mineral Dyke
	Q	Q	Quaternary
	T	T	Takla Volcanics

SECTION SPECS:
REF. PT. E. N 637400 m 6326730 m
EXTENTS 1434 m 1907 m
SECTION TOP: BOT 1941 m 33.45 m
TOLERANCE +/- 100 m



Aurico Metals Inc
Kemess East
637400E SECTION
Date: 2-Aug-2015 Author: GM



HOLES PLOTTED
TOTAL 3
KH-13-06 KH-13-02 KH-13-04

TOPOGRAPHY

TOPOGRAPHY
Brown line

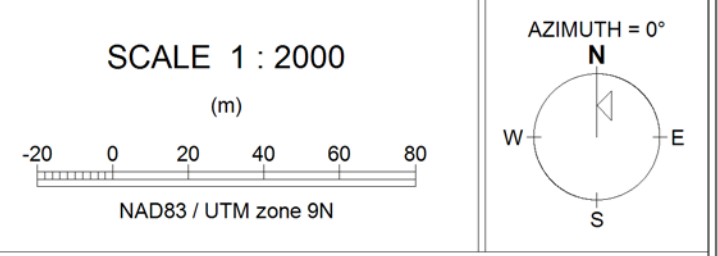
BAR GRAPHS

BAR GRAPH	L	COL	RANGE
Au (ppt)	L	Yellow	Min 0 Max 2
Cu (ppt)	R	Green	Min 0 Max 2

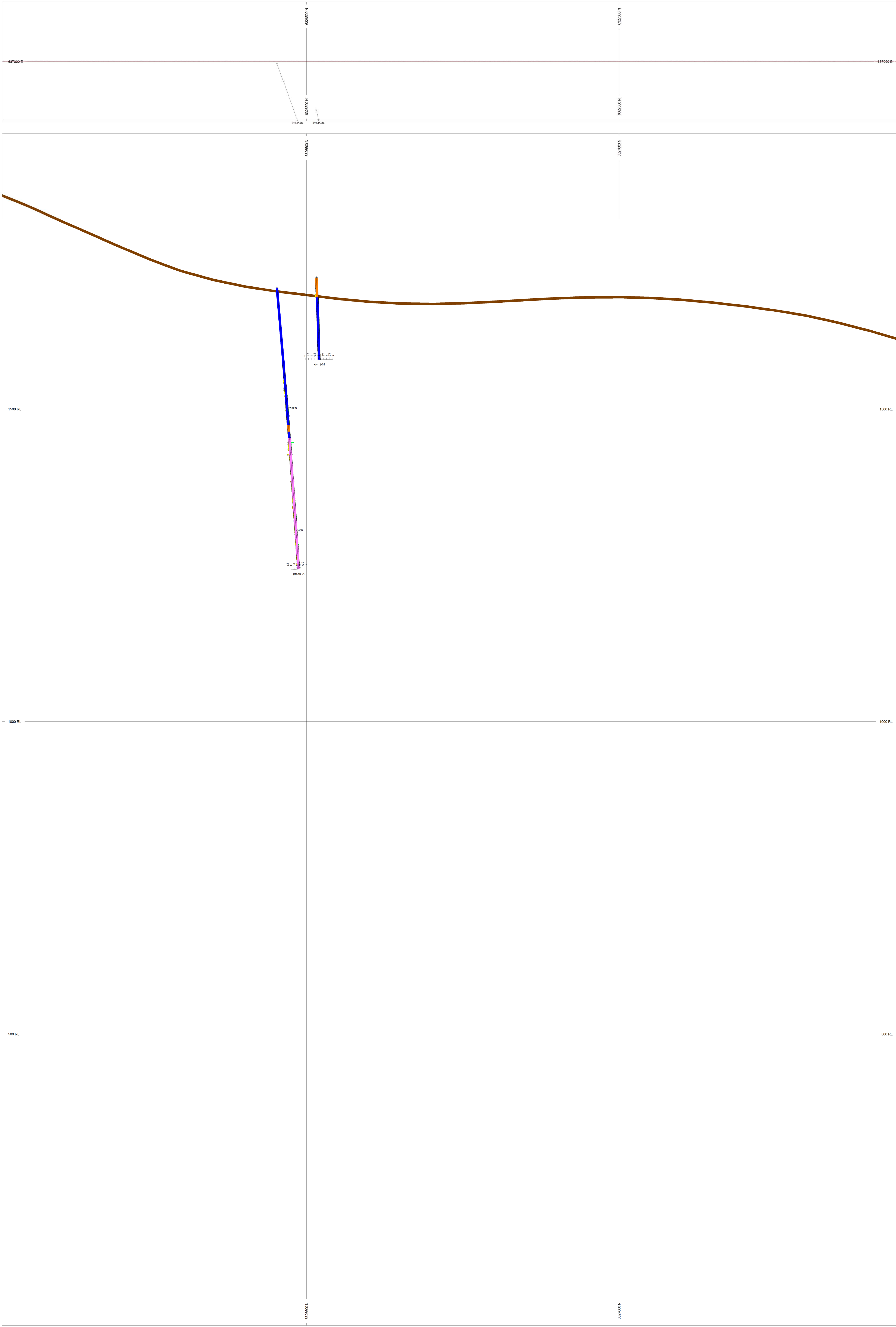
ROCK CODES

LHP_Group	PAT	LABEL	DESCRIPTION
B	Black	B	Black Lake Intrusion
B1	Black	B1	Black Lake Intrusion
B2	Black	B2	Black Lake Intrusion
F	Black	F	Fault Zone
H	Blue	H	Hazleton Volcanics
P	Orange	P	Post-mineral Dike
P1	Orange	P1	Post-mineral Dike
P2	Orange	P2	Post-mineral Dike
P3	Orange	P3	Post-mineral Dike
Q	Green	Q	Quaternary
T	Green	T	Takla Volcanics

SECTION SPECS:
REF. PT. E. N. 637000 m 6326730 m
EXTENTS 1434 m 1907 m
SECTION TOP: BOT 1981 m 33.45 m
TOLERANCE +/- 100 m



AuRico Metals Inc
Kemess East
637200E SECTION
Date: 2-Aug-2015 Author: GM



HOLES PLOTTED

TOTAL 2
KN-13-02 KN-13-04

TOPOGRAPHY

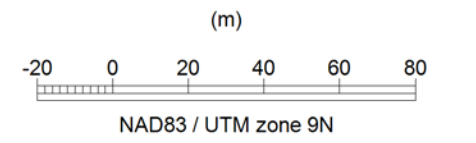
TOPOGRAPHY

BAR GRAPHS L/R COL RANGE
Au (ppt) L Yellow Min 0 Max 2
Cu (ppt) R Green Min 0 Max 2

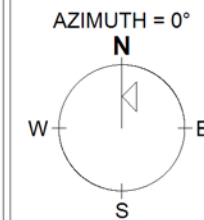
ROCK CODES	PAT	LABEL	DESCRIPTION
B		B	Black Lake Intrusion
B1		B1	Black Lake Intrusion
B2		B2	Black Lake Intrusion
F		F	Fault Zone
H		H	Hazelton Volcanics
P		P	Post-mineral Dyke
Pb		Pb	Post-mineral Dyke
Ph		Ph	Post-mineral Dyke
Pi		Pi	Post-mineral Dyke
Pr		Pr	Post-mineral Dyke
Pt		Pt	Post-mineral Dyke
Q		Q	Quaternary
T		T	Takla Volcanics

SECTION SPECS:
REF. PT. E. N. 637000 m 6326700 m
EXTENTS 1434 m 1907 m
SECTION TOP: 1941 m 33.45 m
TOLERANCE +/- 100 m

SCALE 1 : 2000



NADES / UTM zone 9N



AuRico Metals Inc
Kemess East
637000E SECTION
Date: 2-Aug-2015 Author: GM