

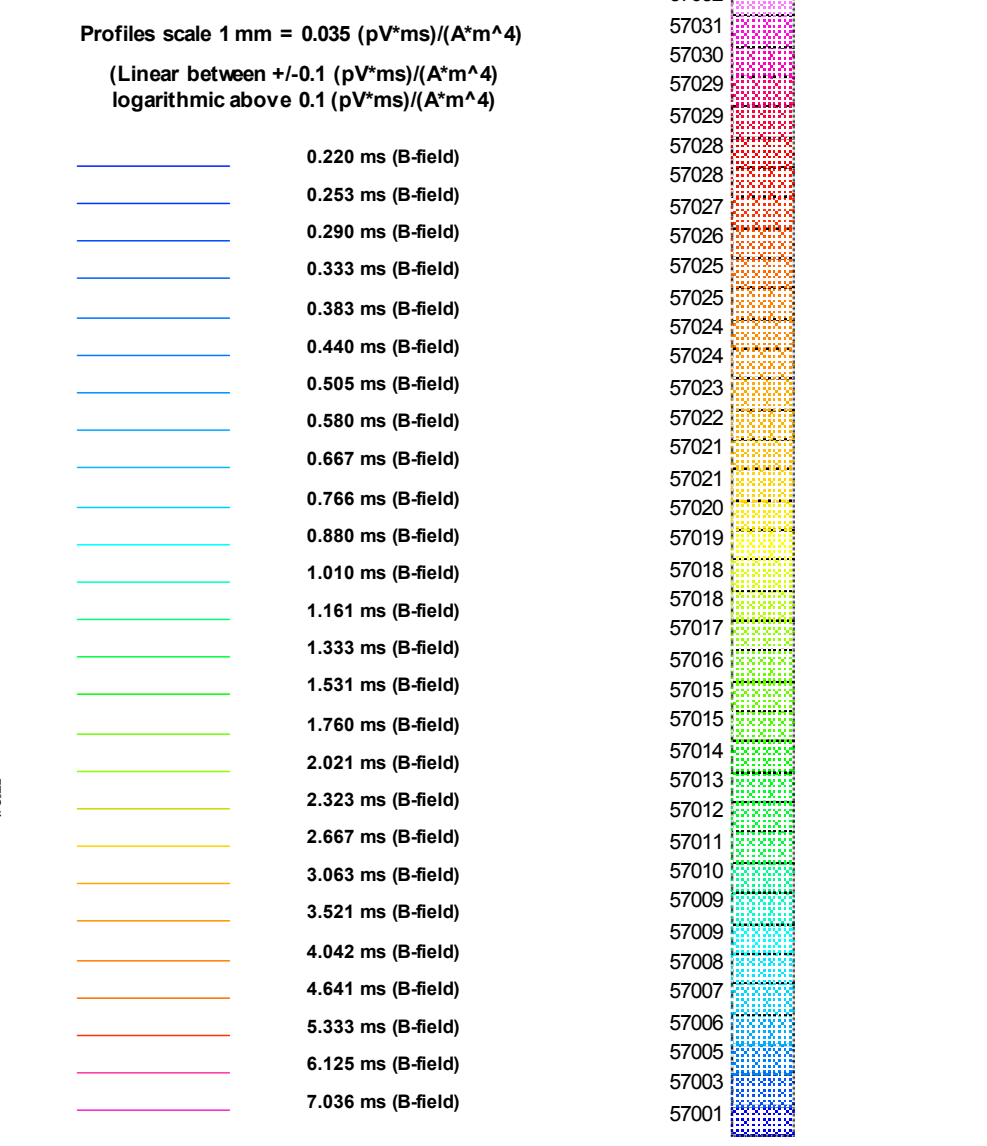


**BC Geological Survey
Assessment Report
35299b**

SURVEY SPECIFICATIONS:
 Survey Date: July 22nd to August 5th, 2014
 Survey Base: Cirque Camp, British Columbia
 Aircraft: Aerospatiale A-Star 350 B3 (C-GEJ)
 Survey Line Spacing: 200 Meters
 Survey Line Direction: N 50° E / N 230° E
 Tie Line Spacing: 2000 Meters
 Tie Line Direction: N 140° E / N 320° E
 Average Aircraft Terrain Clearance: 110 Meters
 EM Transmitter Loop: Towed at an average terrain clearance of 35 meters below the helicopter
 Magnetic Sensor: Towed at an average terrain clearance of 13 meters below the helicopter

INSTRUMENTS
 Geotech Time Domain Electromagnetic System (VTEM)
 Concentric RvTx Geometry
 Z-Coil Diameter: 1.2m
 Transmitter Loop: Diameter 17.6 Meters
 Dipole Moment: 237,412 nA
 Transmitter Wave Form: Trapezoid, Pulse Width 3.42 ms, Base Frequency 30 Hz
 Geometrics: High Sensitivity Cesium Magnetometers
 Mag Resolution: 0.02 nT at 10 samples/sec

MAP PROJECTION
 Datum: NAD83
 Projection: Universal Transverse Mercator
 Central Meridian: 123°W (Zone 10N)
 Central Scale Factor: 0.9996
 False Easting/Northing: 500,000m/0m
 Major Axis: 6378137.000
 Inverse Flattening: 298.25722
 NTS: 094F06, 094F07, 094F10 & 094F11



EM Anomaly Symbols

Conductance < 5.0 siemens	○
5.0 < Conductance < 10.0	⊕
10.0 < Conductance < 20.0	⊗
20.0 < Conductance < 35.0	⊙
35.0 < Conductance < 50.0	⊚
50.0 < Conductance	⊛

TOPOGRAPHIC LEGEND:

- Roads
- Streams / Rivers
- Contours
- Lakes / Ponds
- Wetlands
- Mining Claims

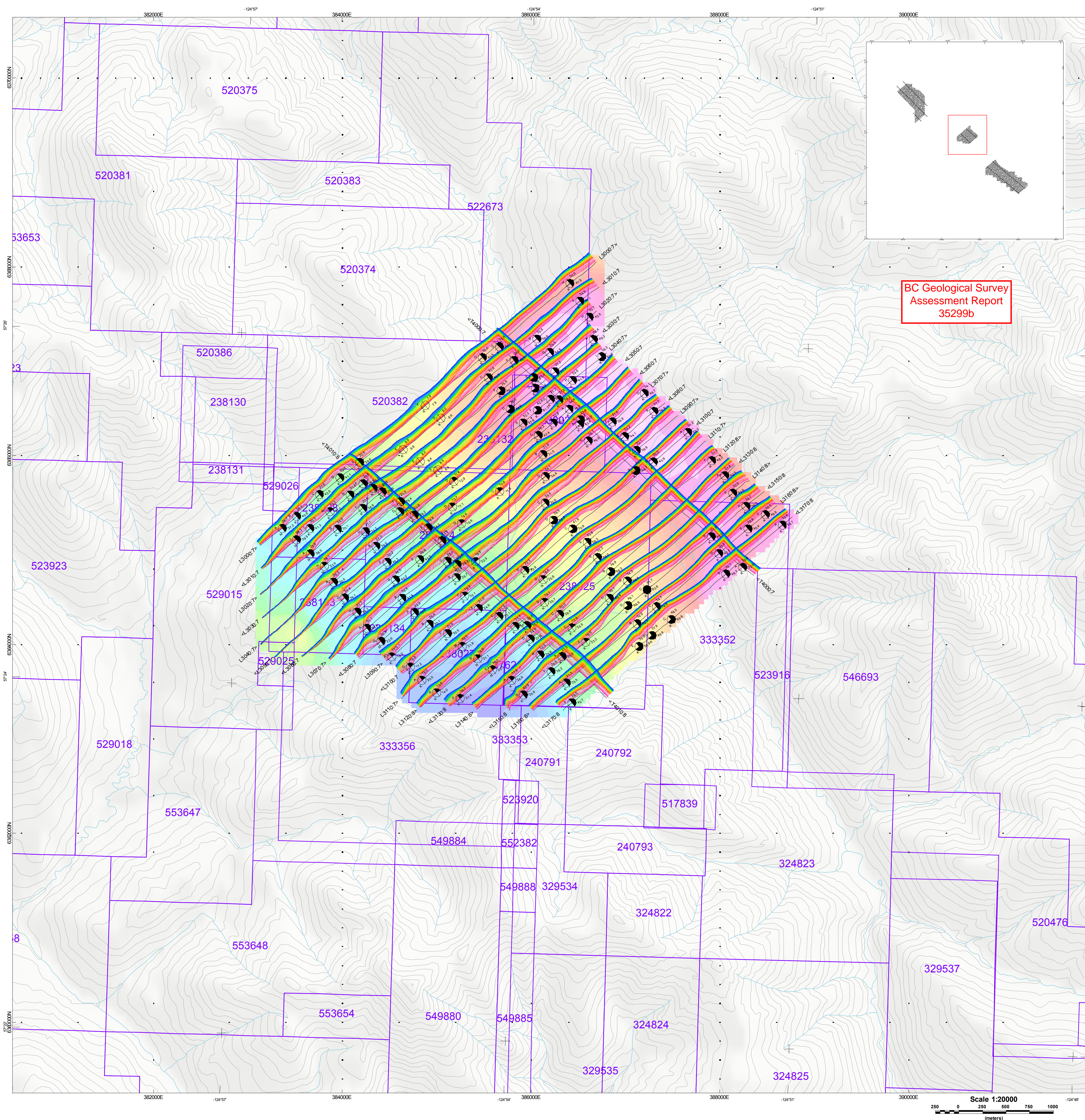
The topographic data base was derived from 1:50,000 NRC (Natural Resources Canada) NTDB data. Background shading is derived from NASA SRTM Shuttle Radar Topography Mission data. Inset data derived from Geocommunities 1:250,000 Canadian National Topographic database. Mining Claims are derived from the Government of British Columbia (www.geocomm.com) (<http://www.geogratis.ca>) (<http://www.gov.bc.ca>)

**Teck Resources Limited
Fluke Block
Ware, British Columbia**

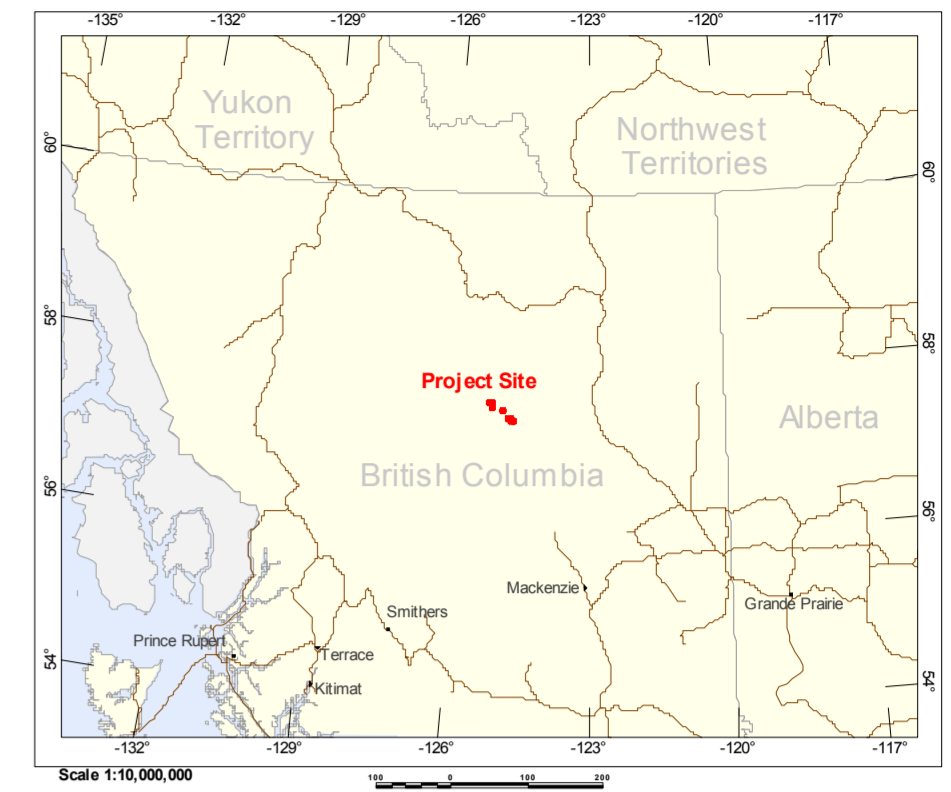
**Geotech VTEM System
VTEM B-Field Z Component Profiles
Time Gates 0.220 - 7.036 ms
over Total Magnetic Intensity**

Flown and processed by Geotech Ltd.
245 Industrial Parkway North,
Aurora, Ontario, Canada L4G4C4
www.geotech.ca

September 2014



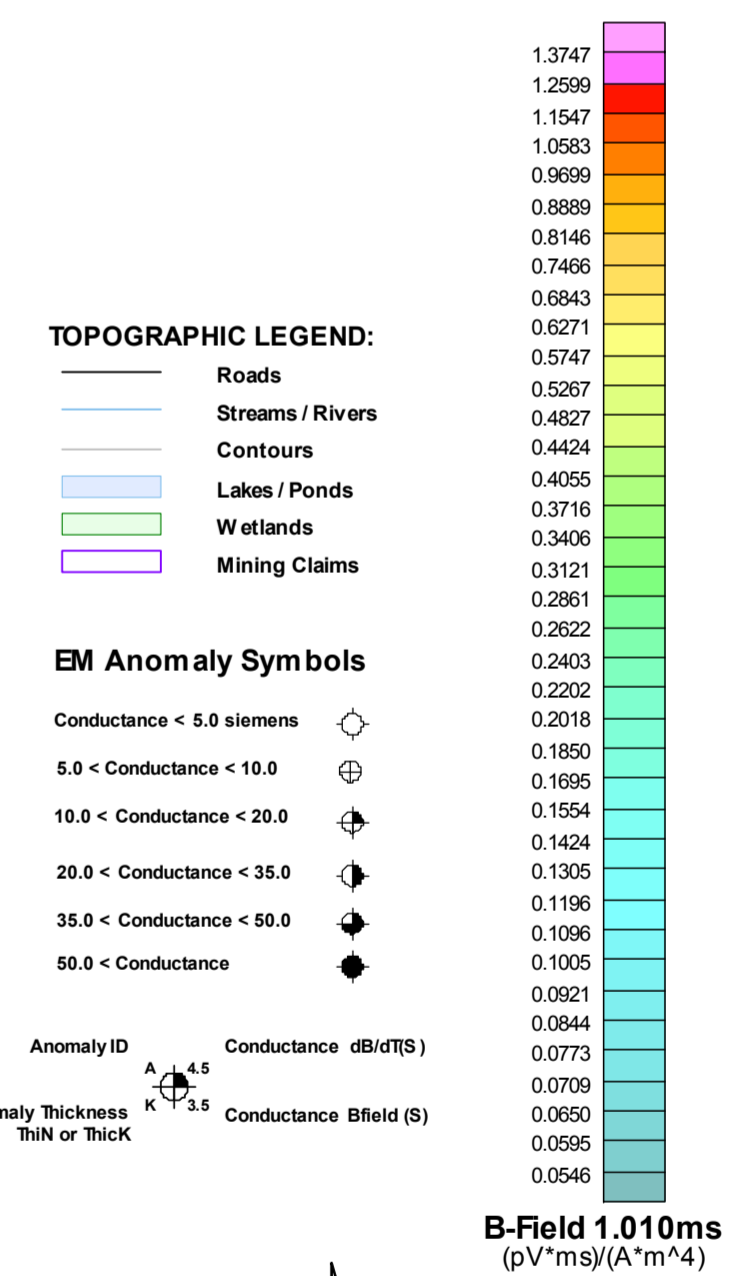
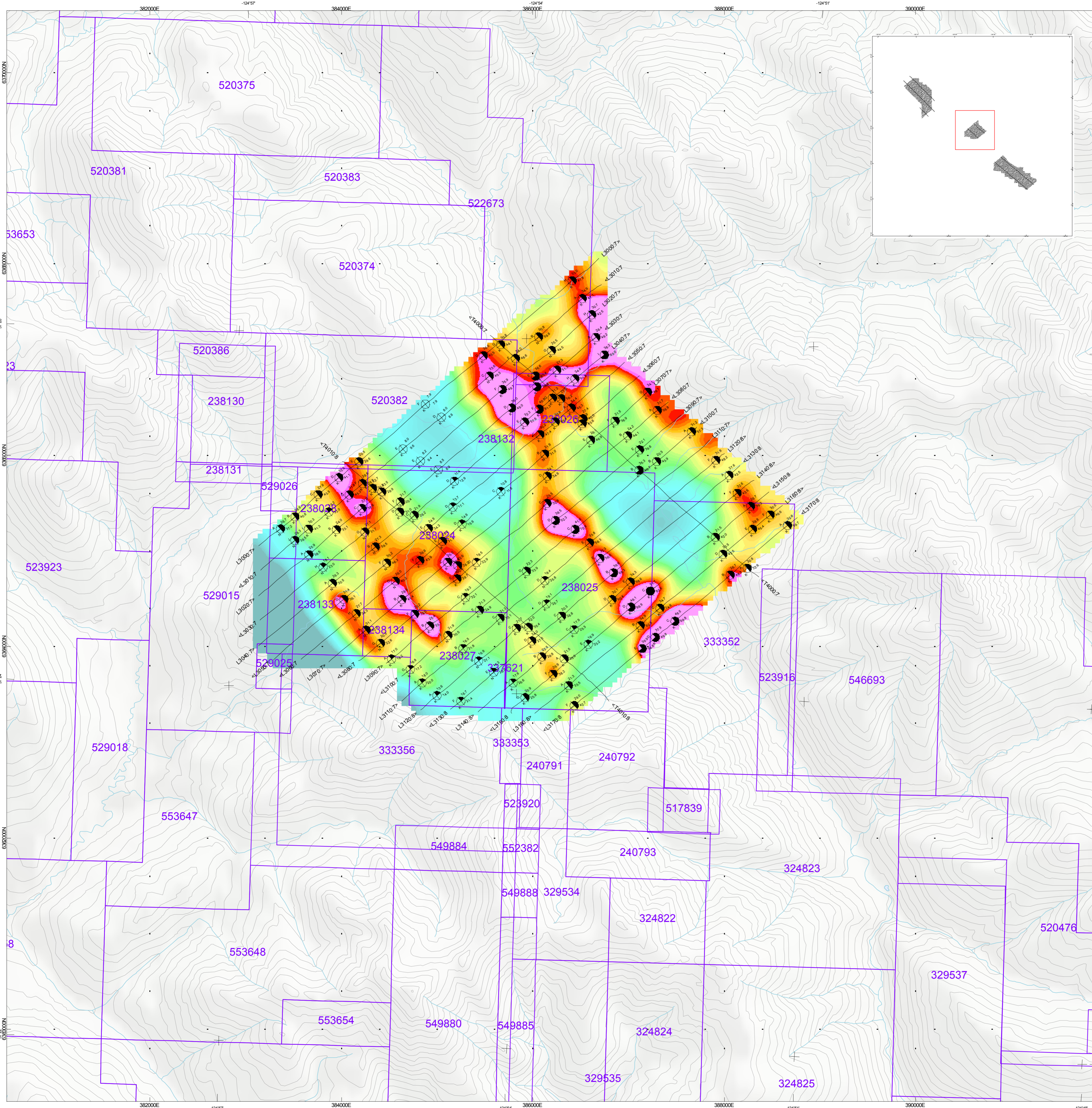
Scale 1:20000
250 500 750 1000
meters
NAD83 / UTM zone 10N



SURVEY SPECIFICATIONS:
 Survey Date: July 22nd to August 5th, 2014
 Survey Base: Cirque Camp, British Columbia
 Aircraft: Aerospatiale A-Star 350 B3 (C-GEOJ)
 Survey Line Spacing: 200 Meters
 Survey Line Direction: N 50° E / N 230° E
 Tie Line Spacing: 2000 Meters
 Tie Line Direction: N 140° E / N 320° E
 Average Aircraft Terrain Clearance: 110 Meters
 EM Transmitter Loop: Towed at an average terrain clearance of 35 meters below the helicopter
 Magnetic Sensor: Towed at an average terrain clearance of 13 meters below the helicopter

INSTRUMENTS
 Geotech Time Domain Electromagnetic System (VTEM)
 Concentric RxTx Geometry
 Z-Coil Diameter 1.2m
 Transmitter Loop: Diameter 17.6 Meters
 Dipole Moment: 237.412 nA
 Transmitter Wave Form: Trapezoid, Pulse Width 3.42 ms, Base Frequency 30 Hz
 Geometrics High Sensitivity Cesium Magnetometers
 Mag Resolution: 0.02 nT at 10 samples/sec

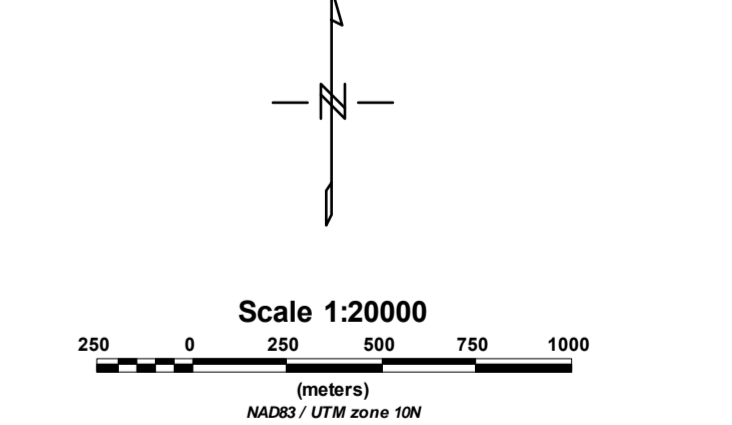
MAP PROJECTION
 Datum: NAD83
 Projection: Universal Transverse Mercator
 Central Meridian: 123°W (Zone 10N)
 Central Scale Factor: 0.9996
 False Easting/Northing: 500,000m
 Major Axis: 6378137.000
 Inverse Flattening: 298.25722
 NTS: 094F06, 094F07, 094F10 & 094F11



TOPOGRAPHIC LEGEND:
 Roads
 Streams / Rivers
 Contours
 Lakes / Ponds
 Wetlands
 Mining Claims

EM Anomaly Symbols
 Conductance < 5.0 siemens
 5.0 < Conductance < 10.0
 10.0 < Conductance < 20.0
 20.0 < Conductance < 35.0
 35.0 < Conductance < 50.0
 50.0 < Conductance

Anomaly ID
 Conductance cB/dTS
 Conductance BField (S)
 Anomaly Thickness Thin or Thick



The topographic database was derived from 1:50000 NRC (Natural Resources Canada) NTDB data
 Background shading is derived from NASA SRTM (Shuttle Radar Topography Mission) data
 Inset data derived from Geocommunities 1:250,000 Canadian National Topographic database
 Mining Claims are derived from the Government of British Columbia
 (www.geocomm.com/www.geogratis.ca/http://www.gov.bc.ca)

Teck Resources Limited
Fluke Block
Ware, British Columbia

Geotech VTEM System
 VTEM B-Field Z Component
 Channel 31, Time Gate 1.010 ms

Flown and processed by Geotech Ltd.
 245 Industrial Parkway North,
 Aurora, Ontario, Canada L4G 4C4
 www.geotech.ca

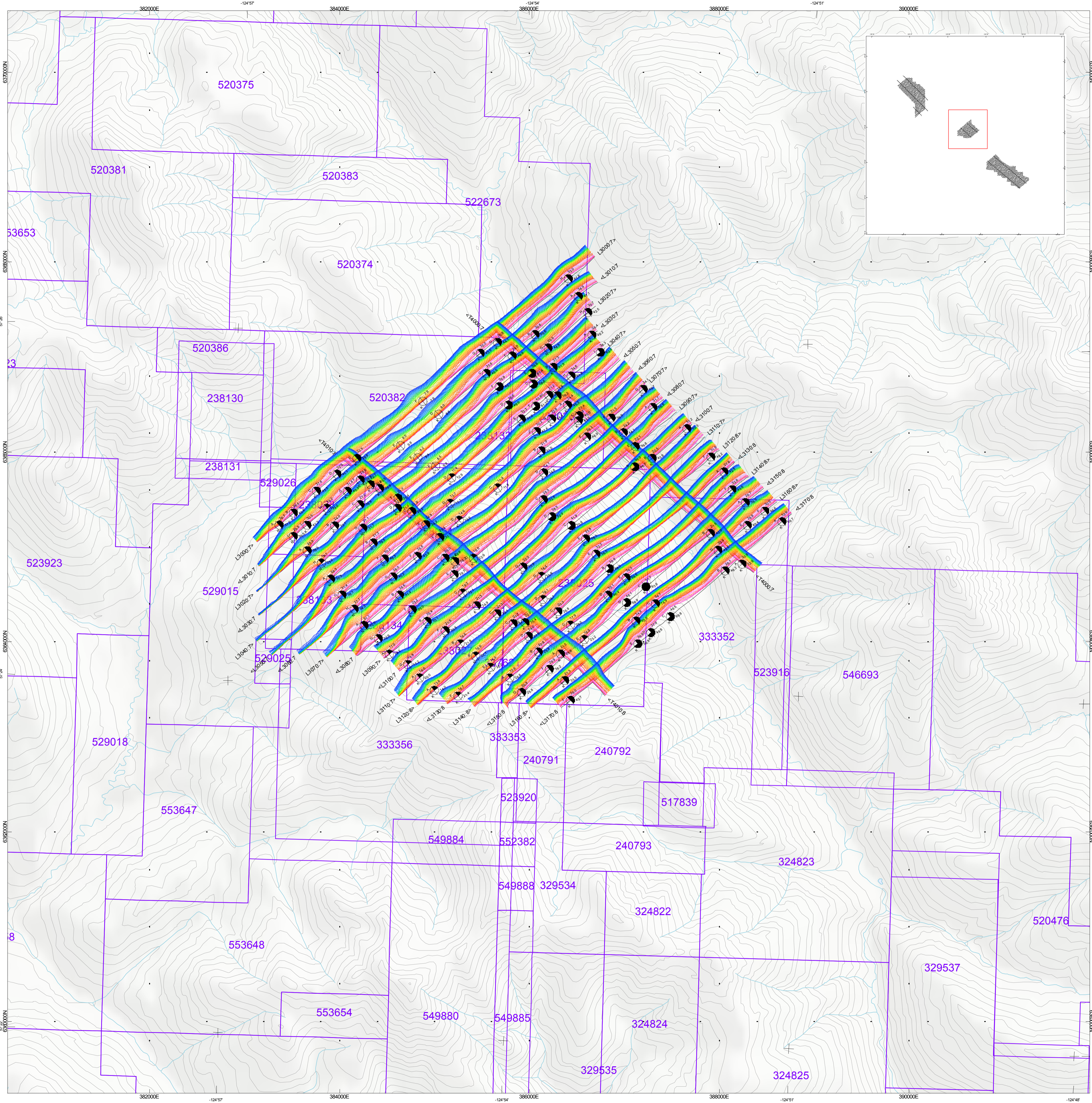
September 2014



SURVEY SPECIFICATIONS:
 Survey Date: July 22nd to August 5th, 2014
 Survey Base: Cirque Camp, British Columbia
 Aircraft: Aerospatiale A-Star 350 B3 (C-GEOJ)
 Survey Line Spacing: 200 Meters
 Survey Line Direction: N 50° E / N 230° E
 Tie Line Spacing: 2000 Meters
 Tie Line Direction: N 140° E / N 320° E
 Average Aircraft Terrain Clearance: 110 Meters
 EM Transmitter Loop: Towed at an average terrain clearance of 35 meters below the helicopter
 Magnetic Sensor: Towed at an average terrain clearance of 13 meters below the helicopter

INSTRUMENTS:
 Geotech Time Domain Electromagnetic System (VTEM)
 Concentric Rx/Tx Geometry
 2-Coil Diameter 1.2m
 Transmitter Loop: Diameter 17.6 Meters
 Dipole Moment: 237,412 nA
 Transmitter Wave Form: Trapezoid, Pulse Width 3.42 ms, Base Frequency 30 Hz
 Geometrics High Sensitivity Cesium Magnetometers
 Mag Resolution: 0.02 nT at 10 samples/sec

MAP PROJECTION:
 Datum: NAD83
 Projection: Universal Transverse Mercator
 Central Meridian: 123°W (Zone 10N)
 Central Scale Factor: 0.9996
 False Easting/Northing: 500,000m/0m
 Major Axis: 6378137.000
 Inverse Flattening: 298.25722
 NTS: 094F06, 094F07, 094F10 & 094F11



Profiles scale 1 mm = 0.025 (pV/A/m⁴)
 Linear between +1.075 (pV/A/m⁴)
 logarithmic above 0.075 (pV/A/m⁴)

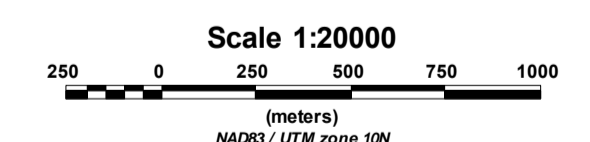
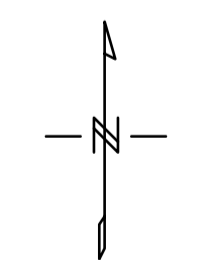
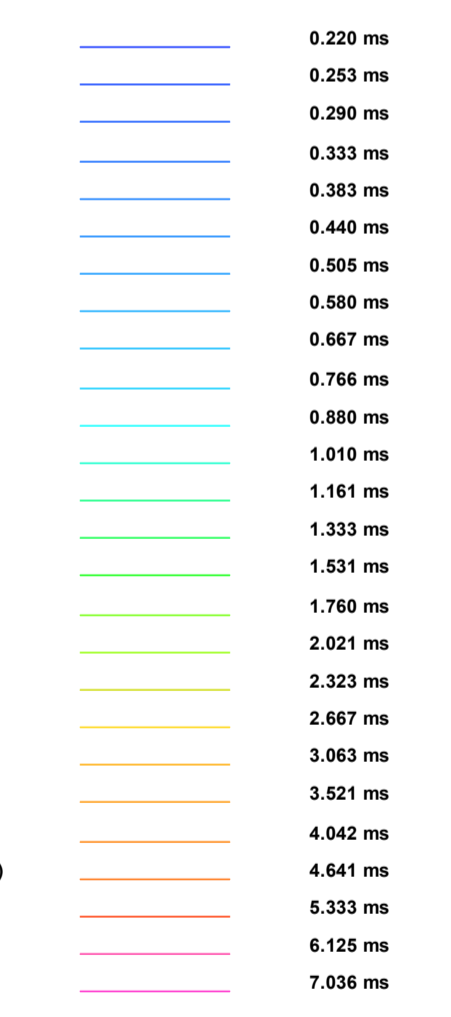
TOPOGRAPHIC LEGEND:

- Roads
- Streams / Rivers
- Contours
- Lakes / Ponds
- Wetlands
- Mining Claims

EM Anomaly Symbols

- Conductance < 5.0 siemens
- 5.0 < Conductance < 10.0
- 10.0 < Conductance < 20.0
- 20.0 < Conductance < 35.0
- 35.0 < Conductance < 50.0
- 50.0 < Conductance

Anomaly ID: $\frac{A}{k} \frac{1}{k} \frac{1}{k}$
 Anomaly Thickness: Thin or Thick
 Conductance dB/dt(S)
 Conductance Bfield (S)



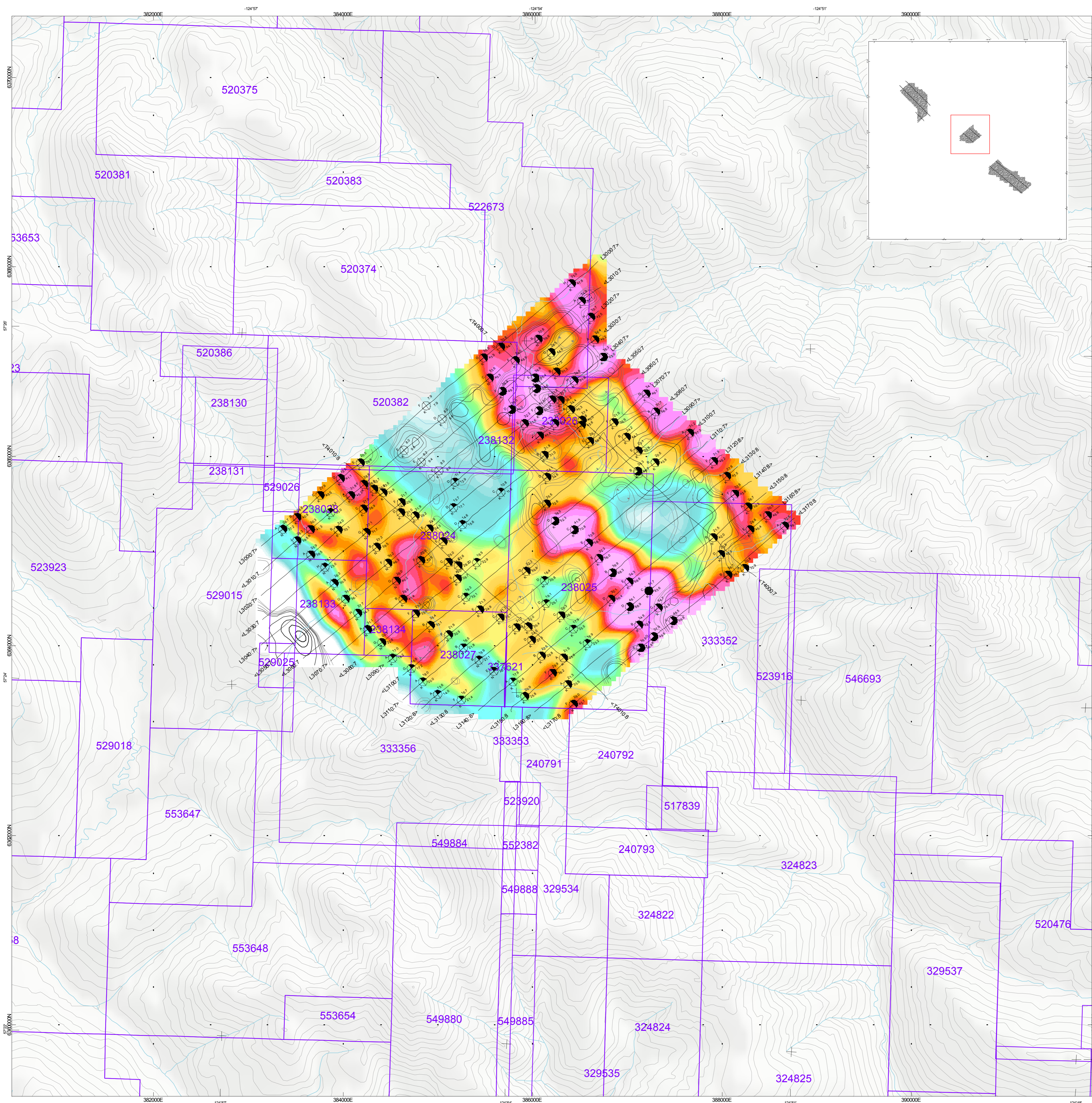
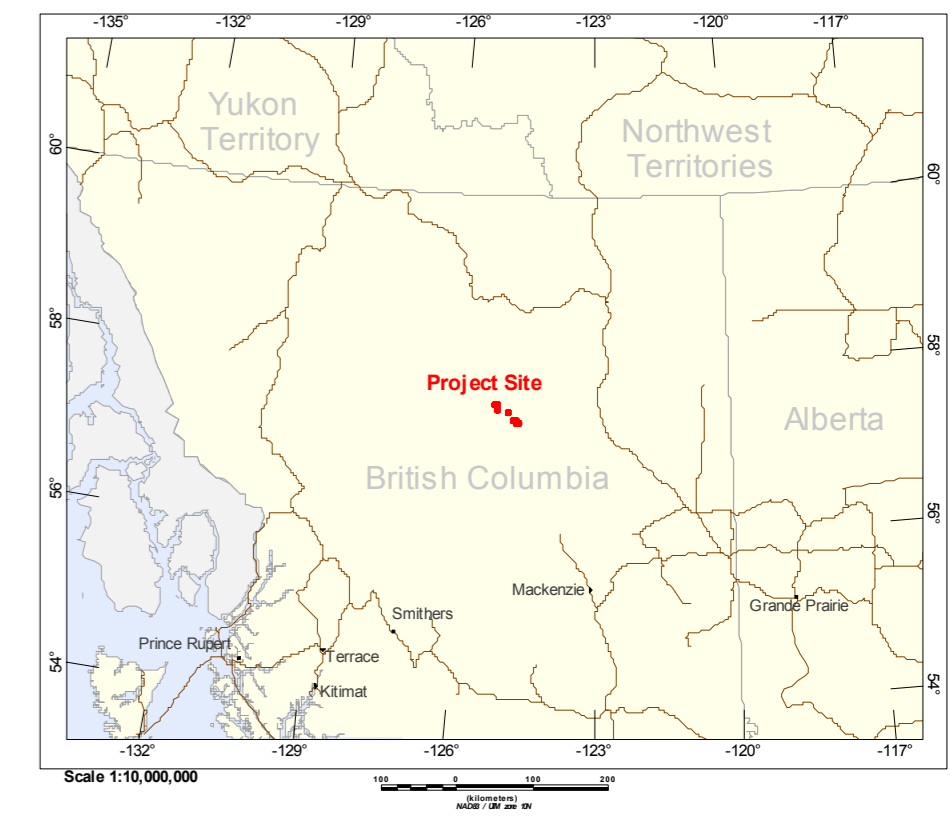
The topographic data base was derived from 1:50,000 NRC (Natural Resources Canada) NT DB data
 Background shading is derived from NASA SRTM Shuttle Radar Topography Mission data
 Inset data derived from Geocommunities 1:250,000 Canadian National Topographic database
 Mining Claims are derived from the Government of British Columbia
 (www.geocomm.com/www.geogratis.ca/http://www.gov.bc.ca)

Teck Resources Limited
Fluke Block
Ware, British Columbia

Geotech VTEM System
VTEM dB/dt Z Component Profiles
 Time Gates 0.220 - 7.036 ms

Flown and processed by Geotech Ltd.
 245 Industrial Parkway North,
 Aurora, Ontario, Canada L4G4C4
 www.geotech.ca

September 2014



SURVEY SPECIFICATIONS:
 Survey Date: July 22nd to August 5th, 2014
 Survey Base: Cirque Camp, British Columbia
 Aircraft: Aerospatiale A-Star 350 B3 (C-GEOJ)
 Survey Line Spacing: 200 Meters
 Survey Line Direction: N 50° E / N 230° E
 Tie Line Spacing: 2000 Meters
 Tie Line Direction: N 140° E / N 320° E
 Average Aircraft Terrain Clearance: 110 Meters
 EM Transmitter Loop: Towed at an average terrain clearance of 35 meters below the helicopter
 Magnetic Sensor: Towed at an average terrain clearance of 13 meters below the helicopter

INSTRUMENTS
 Geotech Time Domain Electromagnetic System (VTEM)
 Concentric Rx/Tx Geometry
 Z-Coil Diameter 1.2m
 Transmitter Loop: Diameter 17.6 Meters
 Dipole Moment: 237,412 nA
 Transmitter Wave Form: Trapezoid, Pulse Width 3.42 ms, Base Frequency 30 Hz
 Geometrics High Sensitivity Cesium Magnetometers
 Mag Resolution: 0.02 nT at 10 samples/sec

MAP PROJECTION
 Datum: NAD83
 Projection: Universal Transverse Mercator
 Central Meridian: 123°W (Zone 10N)
 Central Scale Factor: 0.9996
 False Easting/Northing: 500,000m/0m
 Major Axis: 6378137.000
 Inverse Flattening: 298.25722
 NTS: 094F06, 094F07, 094F10 & 094F11



TOPOGRAPHIC LEGEND:

- Roads
- Streams / Rivers
- Contours
- Lakes / Ponds
- Wetlands
- Mining Claims

EM Anomaly Symbols

Conductance < 5.0 siemens

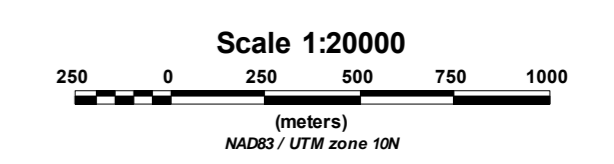
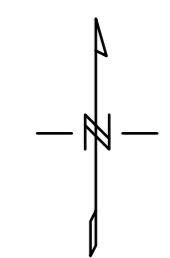
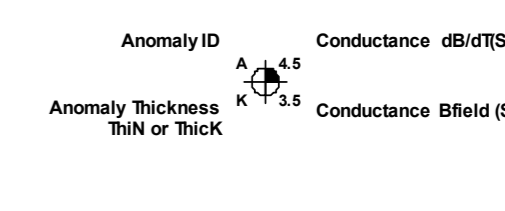
5.0 < Conductance < 10.0

10.0 < Conductance < 20.0

20.0 < Conductance < 35.0

35.0 < Conductance < 50.0

50.0 < Conductance



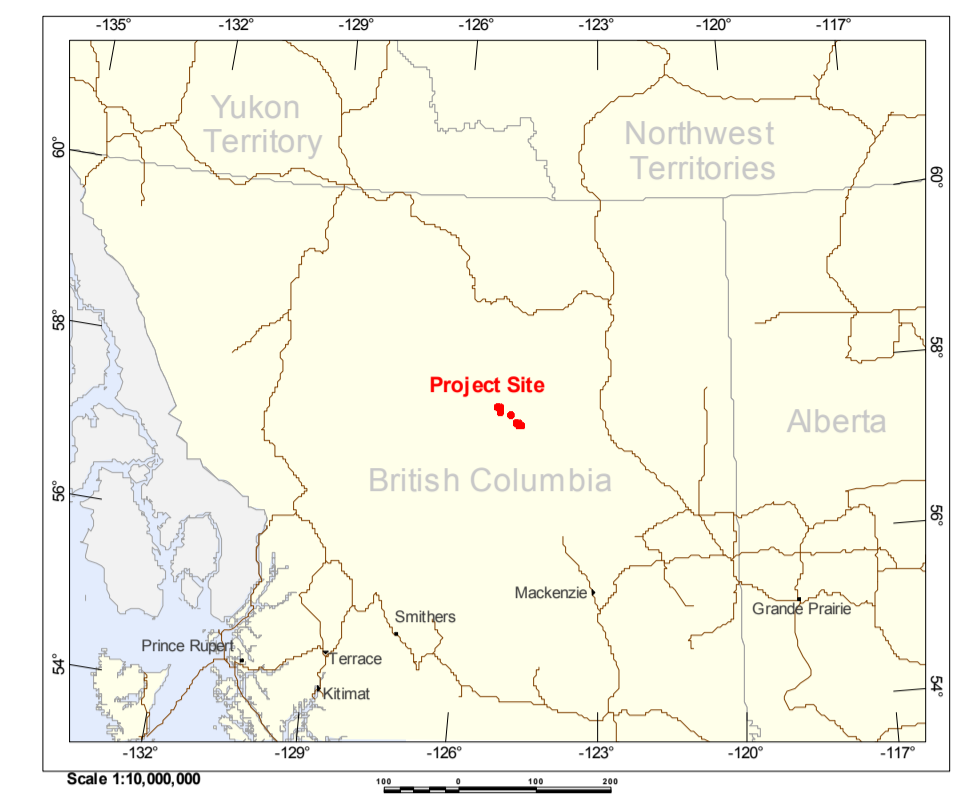
The topographic database was derived from 1:50000 NRC (Natural Resources Canada) NTDB data
 Background shading is derived from NASA SRTM (Shuttle Radar Topography Mission) data
 Inset data derived from Geocommunities 1:250,000 Canadian National Topographic database
 Mining Claims are derived from the Government of British Columbia
 (www.geocomm.com/www.geogratis.ca/http://www.gov.bc.ca)

Teck Resources Limited
Fluke Block
Ware, British Columbia

Geotech VTEM System
 dB/dt Calculated Time Constant (Tau)
 with
 Calculated Vertical Derivative contours

Flown and processed by Geotech Ltd.
 245 Industrial Parkway North,
 Aurora, Ontario, Canada L4G4C4
 www.geotech.ca

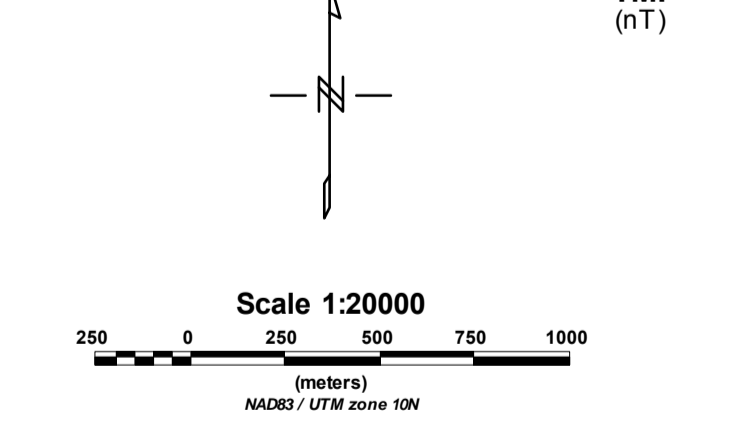
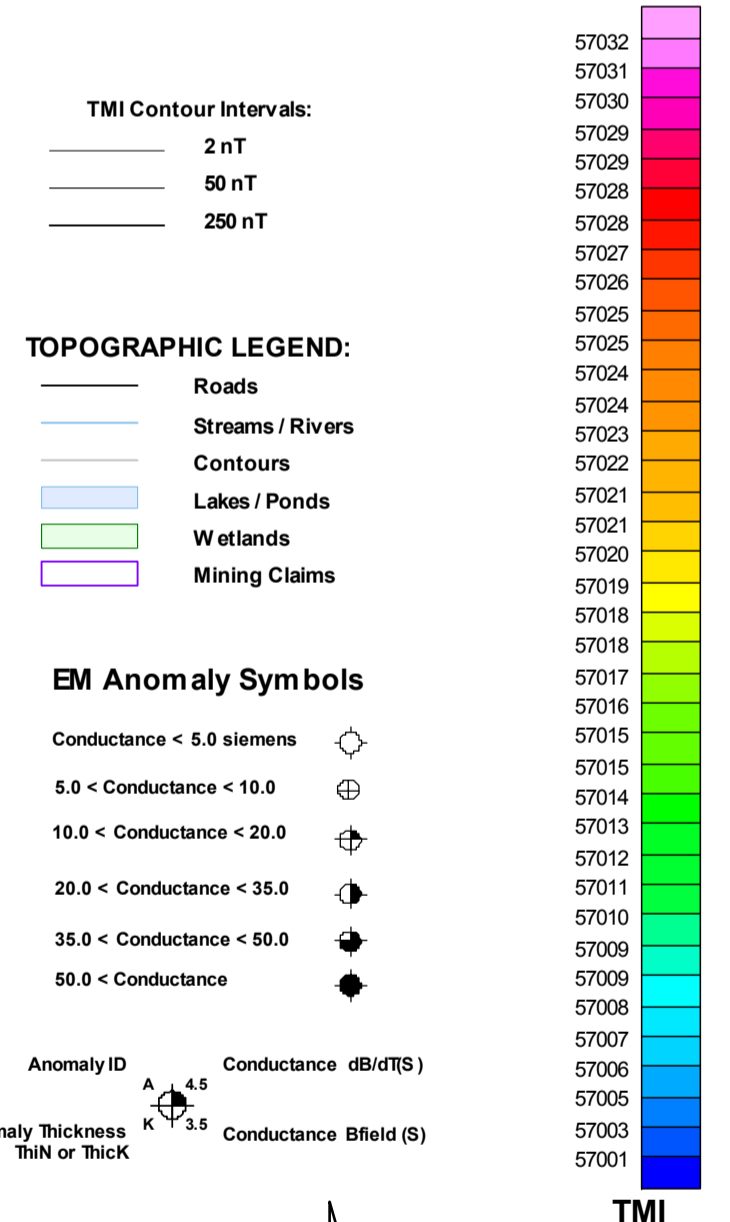
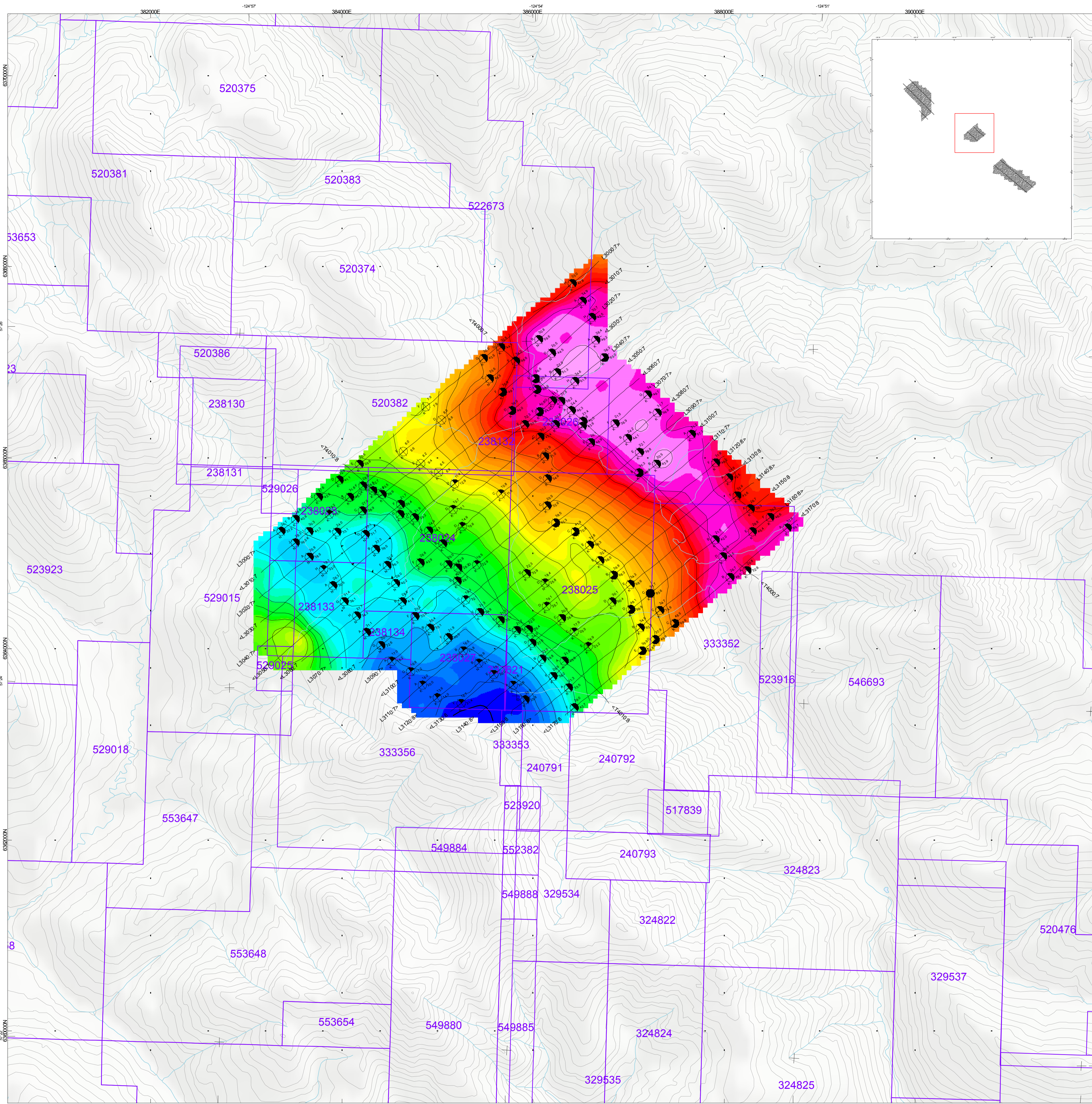
September 2014



SURVEY SPECIFICATIONS:
 Survey Date: July 22nd to August 5th, 2014
 Survey Base: Cirque Camp, British Columbia
 Aircraft: Aerospatiale A-Star 350 B3 (C-GEOJ)
 Survey Line Spacing: 200 Meters
 Survey Line Direction: N 50° E / N 230° E
 Tie Line Spacing: 2000 Meters
 Tie Line Direction: N 140° E / N 320° E
 Average Aircraft Terrain Clearance: 110 Meters
 EM Transmitter Loop: Towed at an average terrain clearance of 35 meters below the helicopter
 Magnetic Sensor: Towed at an average terrain clearance of 13 meters below the helicopter

INSTRUMENTS:
 Geotech Time Domain Electromagnetic System (VTEM)
 Concentric Rx/Tx Geometry
 Z-Coil Diameter 1.2m
 Transmitter Loop: Diameter 17.6 Meters
 Dipole Moment: 237,412 nA
 Transmitter Wave Form: Trapezoid, Pulse Width 3.42 ms, Base Frequency 30 Hz
 Geometrics High Sensitivity Cesium Magnetometers
 Mag Resolution: 0.02 nT at 10 samples/sec

MAP PROJECTION:
 Datum: NAD83
 Projection: Universal Transverse Mercator
 Central Meridian: 123°W (Zone 10N)
 Central Scale Factor: 0.9996
 False Easting/Northing: 600,000m/0m
 Major Axis: 6378137.000
 Inverse Flattening: 298.25722
 NTS: 094F06, 094F07, 094F10 & 094F11



The topographic data base was derived from 1:50000 NRC (Natural Resources Canada) NTDB data
 Background shading is derived from NASA SRTM Shuttle Radar Topography Mission data
 Inset data derived from Geocommunities 1:250,000 Canadian National Topographic database
 Mining Claims are derived from the Government of British Columbia
 (www.geocomm.com/www.geogratis.ca/http://www.gov.bc.ca)

Teck Resources Limited
 Fluke Block
 Ware, British Columbia

Geotech VTEM System
 Total Magnetic Intensity
 (TMI)

Flown and processed by Geotech Ltd.
 245 Industrial Parkway North,
 Aurora, Ontario, Canada L4G 4C4
 www.geotech.ca

September 2014