



ASSESSMENT REPORT TITLE PAGE AND SUMMARY

TITLE OF REPORT: Geological and Geochemical Report Miracle Property

TOTAL COST:\$27,664

AUTHOR(S): P. E. Fox PhD P.Eng

SIGNATURE(S):

A handwritten signature in black ink, appearing to be "P. E. Fox", written over a light grey rectangular background.

NOTICE OF WORK PERMIT NUMBER(S)/DATE(S):

STATEMENT OF WORK EVENT NUMBER(S)/DATE(S) : 5564094, July 28, 2015

YEAR OF WORK: 2015

PROPERTY NAME: Miracle

CLAIM NAME(S) (on which work was done):

1037208

COMMODITIES SOUGHT: Copper Molybdenum silver gold

MINERAL INVENTORY MINFILE NUMBER(S),IF KNOWN: 93A059

MINING DIVISION: Cariboo

NTS / BCGS: 93A5

LATITUDE: 52 ° 29 ' _____ "

LONGITUDE: 121 ° 44 ' _____ " (at centre of work)

UTM Zone: 10 EASTING: 585821 NORTHING: 5817001

OWNER(S):

Eagle Peak Resources

MAILING ADDRESS:

910-475 West Georgia St, Vancouver, BC

OPERATOR(S) [who paid for the work]: Eagle Peak Resources

MAILING ADDRESS:

910-475 West Georgia St vancouver BC

REPORT KEYWORDS (lithology, age, stratigraphy, structure, alteration, mineralization, size and attitude. **Do not use abbreviations or codes**)

Upper Triassic Quesnellia Molybdenum Copper gold carbonate alteration

REFERENCES TO PREVIOUS ASSESSMENT WORK AND ASSESSMENT REPORT NUMBERS:

Fox PE 2009 Geochemical Report Aris 31168, Fox PE 2010 Diamond Drilling Report Aris 31797, Fox PE Geochemical report Aris 33985 and Aris report 35395

TYPE OF WORK IN THIS REPORT	EXTENT OF WORK (in metric units)	ON WHICH CLAIMS	PROJECT COSTS APPORTIONED (incl. support)
GEOLOGICAL (scale, area)	1:10000	1037208	10,500
Ground, mapping			
Photo interpretation			
GEOPHYSICAL (line-kilometres)			
Ground			
Magnetic			
Electromagnetic			
Induced Polarization			
Radiometric			
Seismic			
Other			
Airborne			
GEOCHEMICAL (number of samples analysed for ...)		1037208	17,098
Soil	59 36 Elements Acme AQ250		
Silt			
Rock	3 36 element AQ250	1037208	66
Other			
DRILLING (total metres, number of holes, size, storage location)			
Core			
Non-core			
RELATED TECHNICAL			
Sampling / Assaying			
Petrographic			
Mineralographic			
Metallurgic			
PROSPECTING (scale/area)			
PREPARATORY / PHYSICAL			
Line/grid (km)			
Topo/Photogrammetric (scale, area)			
Legal Surveys (scale, area)			
Road, local access (km)/trail			
Trench (number/metres)			
Underground development (metres)			
Other			
		TOTAL COST	\$ 27,664

ASSESSMENT REPORT

GEOLOGICAL, GEOCHEMICAL REPORT

MIRACLE PROSPECT

Cariboo Mining Division

NTS93A5

Latitude 52° 29', Longitude 121°44'

UTM 10 5817001N, 585821E

For

EAGLE PEAK RESOURCES INC

910 – 475 West Georgia St

Vancouver, BC

By

P. E. Fox, PhD., P.Eng

Richmond, B.C.

August 15, 2015

Event No.5564094

(Revised Feb 22, 2016)

Table of Contents

SUMMARY	i
INTRODUCTION	1
LOCATION	1
CLAIMS	1
HISTORY.....	1
REGIONAL GEOLOGY.....	4
GEOLOGY.....	4
MINERALIZATION.....	6
WORK PROGRAM	6
RESULTS	7
CONCLUSIONS AND RECOMMENDATIONS.....	7
COST STATEMENT	11
STATEMENT OF QUALIFICATIONS.....	12
BIBLIOGRAPHY	13

TABLES

TABLE 1: CLAIM LIST.....	3
TABLE 2: EXPENDITURES	11

FIGURES

FIGURE 1: LOCATION MAP.....	2
FIGURE 2: CLAIM MAP.....	5
FIGURE 3: REGIONAL GEOLOGY.....	8
FIGURE 4: GEOLOGICAL MAP.....	9
FIGURE 5: GEOCHEMICAL SAMPLE MAP	10

APPENDECES

APPENDIX 1: SAMPLE DATA.....15
APPENDIX II: ROCK ANALYSES.....16
APPENDIX III: CERTIFICATES.....17

SUMMARY

This report documents work done by Eagle Peak Resources Inc in July 2015 on the Miracle prospect, part of the large Miocene claim block. Work comprised geological mapping and soil and rock sampling northwest of Gavin Lake, British Columbia.

The July 2015 soil sampling program comprised 59 soil samples collected from glacial tills at 100m intervals along the Jefferson road network, collection of three rock samples of iron carbonate-altered sediments, and geological mapping. Copper contents of the Miracle soils range from 29 to 137 ppm. Average copper content is 77 ppm. Molybdenum contents range from 0.4 to 9ppm and average 2.5 ppm. Both Mo and Cu are at regional background levels. Gold concentrations are at background levels for the region except sample 3254, a till sample, at the east end of the North Jefferson Road, which returned 74.8 ppb gold and lies close to a small monzonite body (Jefferson monzonite). Several chemical analyses of quartz porphyry dikes show normative corundum-hypersthene, typical of the Gavin intrusive suite.

The purpose of the geochemical work was to follow up copper anomalies identified in this area by previous workers. Expenditures total \$27,664.

INTRODUCTION

This report documents work done by Eagle Peak Resources Inc in July, 2015 on the Miracle prospect area, part of a large claim block collectively known as the Miocene project. Work comprised geological mapping and soil and rock sampling to test previous work. Results of the program are detailed herein and recommendations made for continuing work. Expenditures total \$27,664. Work was paid for by Eagle Peak Resources.

LOCATION

The Miracle property lies in the Cariboo Mining Division on map sheet 093A/5 (Figure 1). The Miracle prospect lies west and north of Gavin Lake 20 km southwest of Likely and straddles the Likely Highway at kilometer 60 from 150 Mile House.

The claims lie in the Quesnel Highlands physiographic region of the Interior Plateau which is characterized by shallow lakes, broad valleys and low timbered hills and rocky escarpments. Local vegetation consists of pine, spruce, birch, alder and poplar interspersed with meandering streams, shallow lakes, grasslands and boggy wetlands. Glacial till, often thick, and sourced from the east predominates and outcropping bedrock, generally Roche moutonee and rocky rubble, is rare.

CLAIMS

The Property consists of 10 mineral tenures covering an area of 8,275 hectares and is made up of the Miracle 1-7, Cream, Peaks and Connector claims. (Figure 2, Table 1). The original claims were amalgamated into the claims in Table 1 on July 9, 2015. Expiry dates assume the work documented herein is accepted for assessment requirements. Work was filed on July 28, 2015 under event # 5564094. Work was completed between July 14, 2015 and July 28, 2015 under Mine Permit MX-10-211.

HISTORY

Placer and bedrock exploration of the Likely - Horsefly region began with the discovery of placer gold deposits in 1859. Subsequent placer discoveries were made at Cedar Creek, Antler Creek, Keithley Creek and along the Quesnel River. The Likely- Horsefly region was extensively prospected and there is evidence of gold prospecting within the claim area along Teasdale and



FIGURE 1
LOCATION MAP

NORTH PACIFIC
OCEAN

Wiggins creeks. Government sponsored airborne geophysical surveys and regional geochemical surveys prompted extensive exploration activity. The QR gold deposit was discovered in 1975 and the Mount Polley mine, a few kilometers to the northeast of the claim area, was discovered in 1966 and commenced production in 1997. More recently the Woodjam porphyry copper deposit was discovered south of Horsefly in 2007.

TABLE 1 CLAIM LIST (date of filing)

Tenure No	Name	Expiry Date	Area ha
1035825	CONNECTOR	2016/july/31	750.01
1037207	MIRACLE 1	2016/july/31	1023.21
1037208	MIRACLE 2	2016/july/31	570.48
1037209	MIRACLE 3	2016/july/31	1043.40
1037210	MIRACLE 4	2016/july/31	551.30
1037211	MIRACLE 5	2016/july/31	885.63
1037212	MIRACLE 6	2016/july/31	649.72
1037213	MIRACLE 7	2016/july/31	906.09
1037214	CREAM	2016/july/31	649.66
1037215	PEAKS	2016/july/31	1246.21
Total area ha			8275.71

Interest in the Miracle prospect (Minfile 93A059) at Gavin Lake, also known as the Wet and Gavin copper-molybdenum prospects, was prompted by the discovery of Mount Polley and later the QR gold deposit. Numerous exploration programs have been carried out in the region around Gavin Lake since then. Much of the work was carried out by Amax Exploration in 1970 (Hodgson, 1970), Zubex Resources in 1973 (Westervelt, 1974) and Brican Resources (Crandall, 1979), who collectively targeted the copper-molybdenum mineralization immediately north of Gavin Lake. Amax completed an extensive program of geological mapping, trenching, and soil rock and silt sampling. Soil sampling by Zubex and later by Longboat Resources (Carter and Barclay, 1984) covered the area northwest of the Gavin prospect, just south of the current area of interest. Brican completed soil sampling and induced polarization surveys over the main showings in 1979. More recently, a compilation report on the property was completed by Wallis in 1995 (Wallis, 1995). Eagle Peak Resources completed geochemical sampling (347samples) north of the Miracle vein prospect in 2009 and 981 m of diamond drilling (nine holes) in 2010 to follow up geochemical results and to test the Miracle vein at depth. Geochemical surveys were completed in early 2013 and April, 2015 north of Gavin Lake.

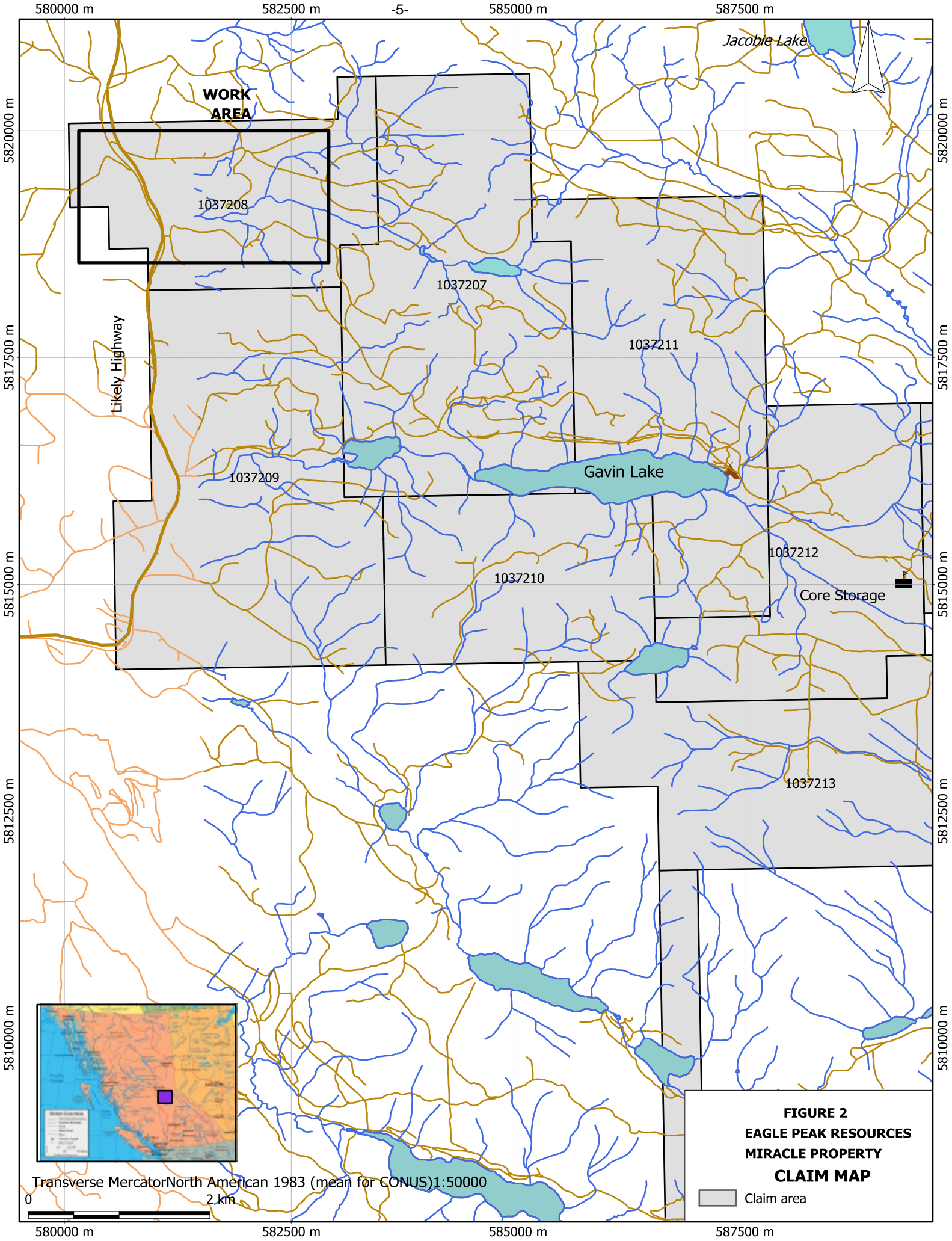
REGIONAL GEOLOGY

The Miocene claim group (Figure 3) lies along the Central Quesnel Terrane, a complex continent-margin volcanic arc complex forming a regional synclinal structure west of the North American plate during the Triassic-Jurassic (Panteleyev, 1996). Oldest strata are black shale, argillite, siltstone and sandstone of Middle Triassic age. These rocks underlie much of the Miocene claim area. Overlying this older unit are basaltic pillow lava and breccia of Norian age and still younger fault-bounded blocks of Lower Jurassic felsic breccia. Extensive beds of Jurassic pebble conglomerate, shale, siltstone and sandstone with thin red bed units underlie the southwest corner of the Miocene claim area. These rocks are cut by numerous Cretaceous granitic bodies, the Gavin intrusions, and are overlain by regionally extensive flat lying Chilcotin group basalt flows of Miocene age. Geology of the Miracle prospect is given below.

GEOLOGY

Local geology is given in Figure 4 in part compiled from Hodgson (1970) and Fox (2013). North of Gavin Lake, pyritic siltstone forms bedrock units on the western portion of the property including the current area, and coarse basaltic tuff and breccia lie to the east. These strata are cut by a dike complex of porphyritic quartz monzonite and granite (Gavin Intrusions). Copper and molybdenite showings in these rocks attracted attention to the claim area originally as a porphyry target. South of Gavin Lake, mapping in 2013 discovered previously unexposed strata of basaltic rocks and overlying felsic units comprising massive felsic breccia and felsic tuffs and grey and maroon sediments (Figure 4; units 2c and 3a of Bailey, 1990, 1997). These strata dip east at 45°. The rock succession here comprises an east-dipping assemblage of Upper Triassic and Lower Jurassic rocks seen elsewhere in the Mount Polley and Morehead Lake areas (Bailey, 1990).

The provenance of felsic volcanism and deposition of aqueous tuffs and sediments following deposition of Norian limestone and black siltstone units is unknown but may be related to renewed volcanism in earliest Jurassic. An easterly fault along Gavin Lake seems to offset local stratigraphy (Figure 4) although the exact relation to the basalt-felsic units northeast of Gavin Lake is not clear.



WORK AREA

1037208

1037207

1037211

1037209

Gavin Lake

1037210

1037212

Core Storage

1037213

Jacoble Lake

Likely Highway

**FIGURE 2
EAGLE PEAK RESOURCES
MIRACLE PROPERTY
CLAIM MAP**

Claim area



Transverse Mercator North American 1983 (mean for CONUS) 1:50000

2 km

580000 m

582500 m

585000 m

587500 m

-5-

MINERALIZATION

Quartz-iron carbonate zones commonly associated with the Gavin intrusions are common throughout the region and well exposed along the Gavin and Jefferson roads. Volcanic units are often pyritic and locally hornfelsed. They often contain disseminated chalcopyrite, molybdenite and bornite associated with porphyry style quartz-K feldspar stockworks and K feldspar potassic alteration marginal to dikes of porphyritic quartz monzonite and granite. Minor amounts of disseminated chalcopyrite were noted in 2013 in Lower Jurassic tuffs and breccia exposed on the Shelterwood road south of Little Lake.

The Miracle epithermal vein north of Gavin Lake just east of the work area occurs within the basalt unit and local tuff and thin siltstone interbeds along the sheared contact of a north-striking body of porphyritic granite. The veins form a complex zone of stockwork and massive quartz veins several metres thick and are exposed over a vertical distance of some 50 m. The zone strikes north and dips steeply west. It consists of ribboned quartz, chalcedony and lesser calcite, iron carbonate, roscolite and disseminated pyrite, galena, sphalerite and bornite. Silicification, clay and iron carbonate alteration of the host rocks are common. Drusy vugs often contain lamellar calcite.

.WORK PROGRAM

The July 2015 soil sampling program comprised 59 soil samples collected from glacial tills at 100m intervals along the Jefferson road network, collection of three rock samples of iron carbonate-altered rocks, and geological mapping. The purpose of the sampling work was to test geochemical results from prior work programs conducted in the area in 1974 and 1984 (Westervelt 1974, Carter and Barclay 1984) and compiled by Wallis (1995) and Fox (2013, 2015). Sample numbers are given in Figure 5 along with copper and gold contents. Sample data are given in Appendix I. Samples were taken of B horizon soils, usually poorly developed and greyish C horizon rocky material close to bedrock. Tills are generally compact basal till, clay-rich and thin, less than a metre thick. Sample depths were recorded at each site, usually 8 cm, and are tabulated in Appendix I. Samples were submitted to Bureau Veritas Laboratories (BVL) in Vancouver, BC. Analytical methods used were code AQ250 1:1:1 aqua regia digestion ultratrace ICP-MS (36 elements) using the -80mesh fraction of dried soil material (0.5gm aliquot). Detection limits for copper and molybdenum are 0.1 ppm. Rock analyses (Appendix II)

were done by BVL Labs using aqua regia digestion ultratrace ICP-MS (36 elements) and reported in Appendix III.

Geological mapping (Figure 4) covered an area northwest of Gavin Lake along the Jefferson road and local branches. Here quartz-iron carbonate stockwork is exposed in outcrops on the Jefferson road three kilometers east of the Likely Highway.

RESULTS

Results for copper and gold in soils (mainly till) are given in Figure 5 and set out in Appendix I. Copper contents of the Miracle soils range from 29 to 137 ppm. Average copper content is 77 ppm. Molybdenum contents range from 0.4 to 9 ppm and average 2.5 ppm. Both Mo and Cu are at regional background levels. Gold concentrations are at background levels for the region except samples 3254 and 3237, soil samples from hard stoney till, on the North Jefferson Road which returned 74.8 ppb and 18 ppb respectively.

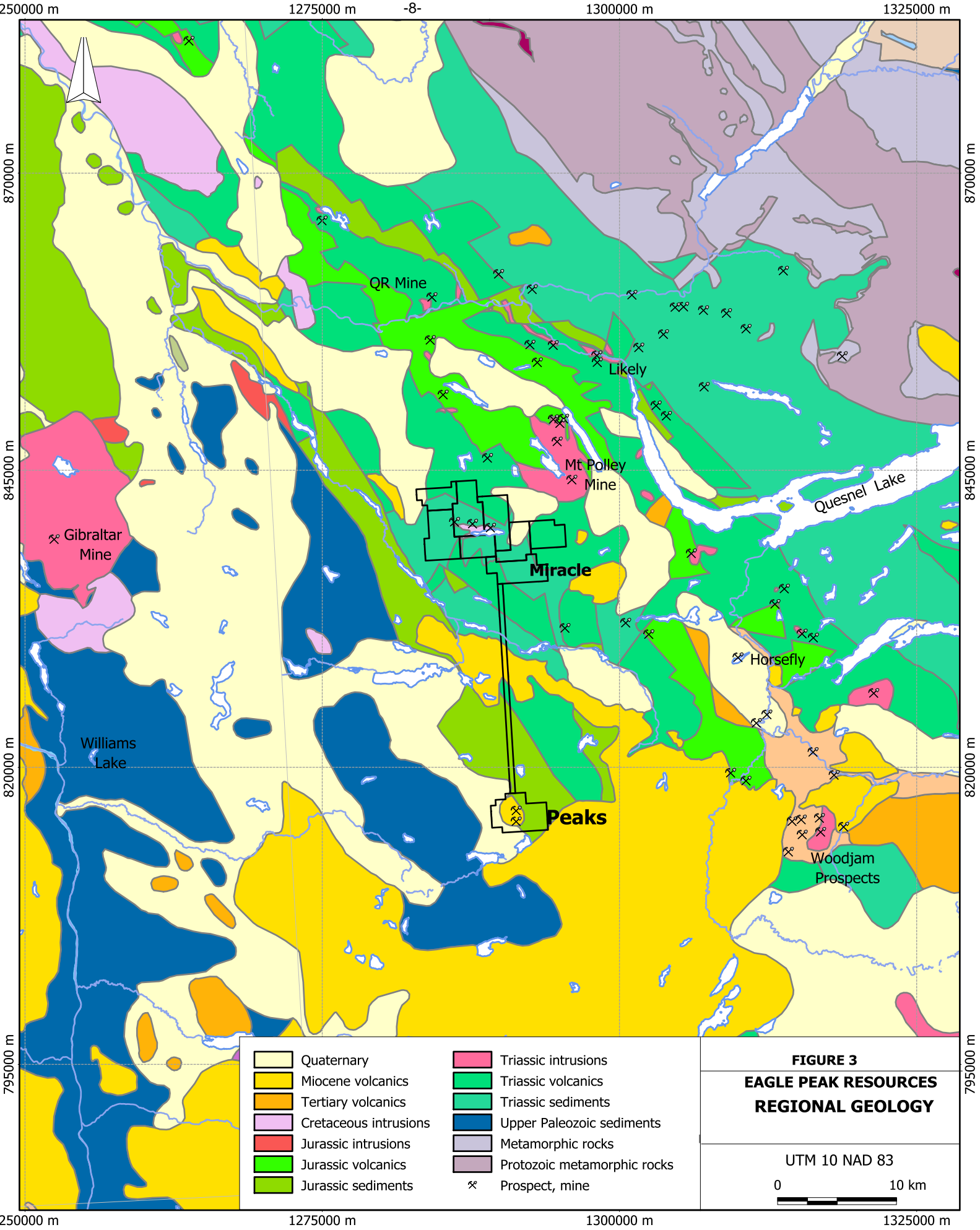
Rock analyses taken from the iron carbonate zones and a monzonite body (Jefferson monzonite) exposed on the Jefferson road (Figure 4) returned low levels of Mo, Cu, Au and Ag except for soil sample 3254 which returned 74.8 ppb Au, just west of an outcropping of pinkish monzonite/syenite. The latter belongs to the lower Jurassic alkalic intrusions typical of the Mt Polley Cu-Au mine area 10 km east and the QR skarn deposit 15 km northeast. A whole rock analysis of this body is given in Appendix III along with the calculated normative minerals. The Jefferson monzonite is nepheline normative, typical of the weakly alkalic (Copper Mountain) suite. The elevated gold soil sample may be significant given its proximity to the Jefferson monzonite. Two other whole rock analyses of altered quartz porphyry dikes (samples 5386, 5387) Appendix II) show both normative corundum and hypersthene, typical of the Gavin intrusive complex just to the south at Gavin Lake.

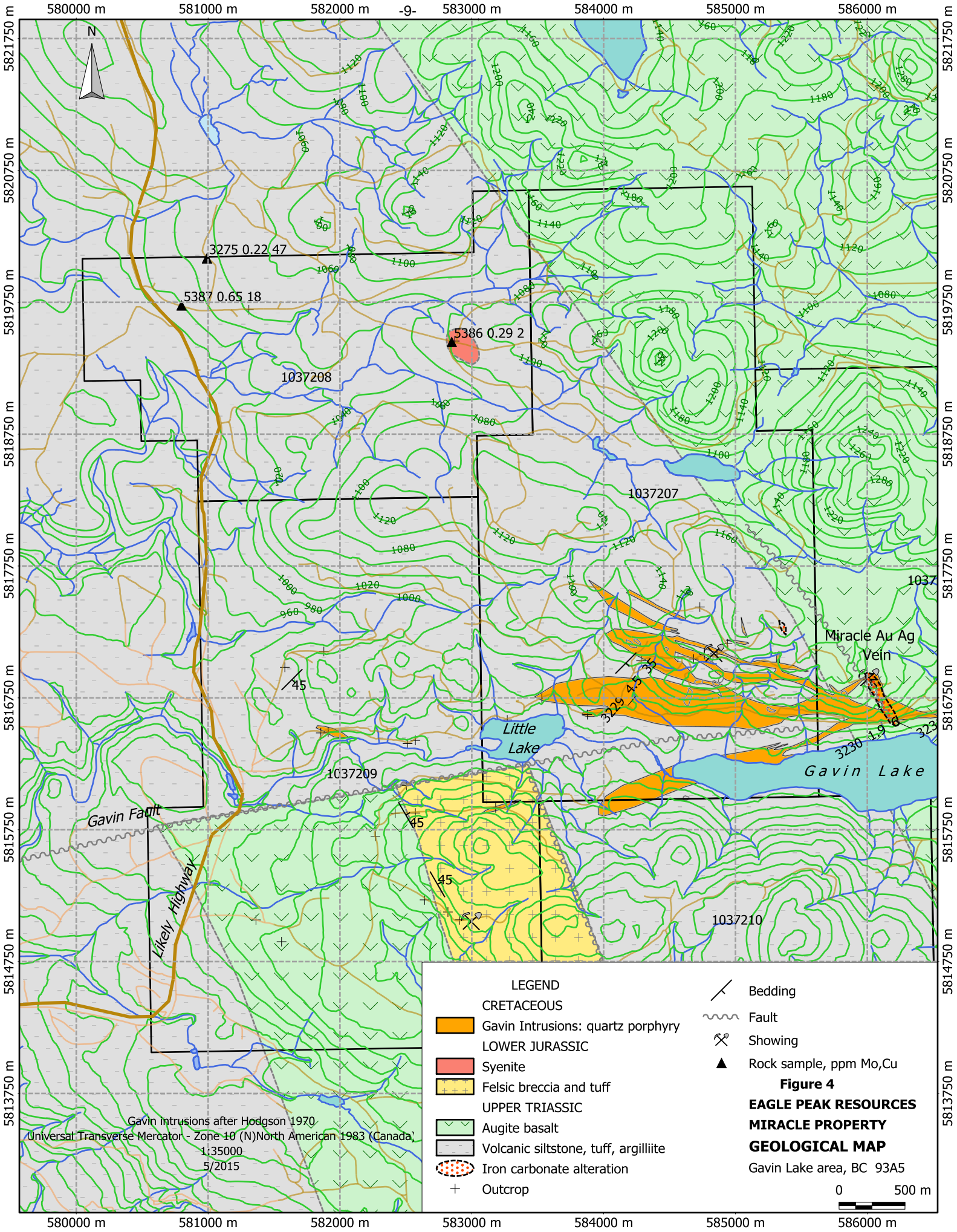


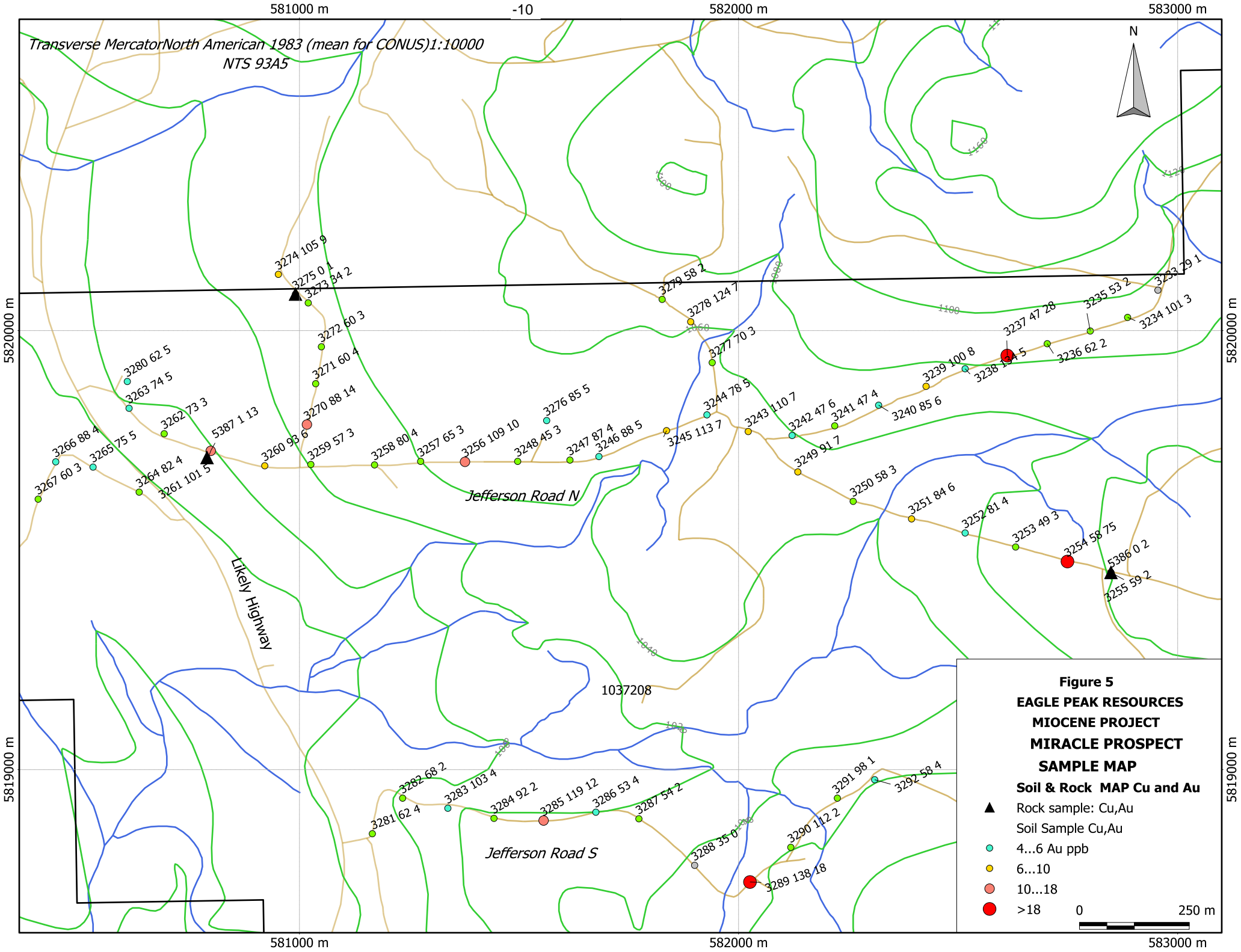
Jefferson monzonite

CONCLUSIONS AND RECOMMENDATIONS

Further sampling work is recommended to follow up the two high gold samples on the Jefferson road 4 km east of the Likely highway.







COST STATEMENT

Work expenditures are tabulated below in Table 2.

TABLE 2. EXPENDITURES

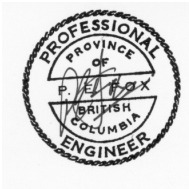
Miracle Project	Item	Rates	Subcost	Cost
Labour (incl travel)	M Bailey sampler	10 days@275	2,475	
	L..Tattersall, technician,prospector	2days@250	500	
	P Fox, geologist i/c, supervision	10 days@1350	13,500	16,475
Accomodation,board	Sandman Inn	15days@175		2,625
Truck rentals, fuel	1 4wd	10days @ 200		2,000
Analyses	Acme labs, Vancouver	62 samples@ \$23		1,464
Field costs				350
Report Preparation	P Fox Phd PEng	5 days@ 950		4,750
Project total				\$27,664

Prepared by



P.E. Fox PhD.,P.Eng

August 15, 2015



STATEMENT OF QUALIFICATIONS

I, Peter E. Fox of Richmond, British Columbia do hereby certify that I:

- am a graduate of Queens University in Kingston, Ontario with a Bachelor of Science and Master of Science degrees in Geological Sciences in 1959 and 1962, and a graduate of Carleton University, Ottawa, Ontario with a degree of Doctor of Philosophy in 1966.
- am a member of the Association of Professional Engineers and Geoscientists of British Columbia #8133.
- have practiced my profession since 1966.
- .am the author of the report entitled "Assessment Report, Geological, Geochemical Report, Miracle Prospect" and supervised all of the work therein.

Dated at Richmond, British Columbia this 15th Day of August, 2015

Respectfully submitted,



Peter E. Fox PhD.,P.Eng.

August 15, 2015



BIBLIOGRAPHY

Bailey, D.G., 1990: Geology of the Central Quesnel Belt, British Columbia; B.C. Ministry Energy, Mines and Petroleum Resources, Open File 1990-31.

Bailey, D.G., 1996: Geology of the Central Quesnel Belt, British Columbia; B.C. Ministry Energy, Mines and Petroleum Resources, Geological Survey Branch, Bulletin 97.

Bailey, D.G. and Livgard, E., 2007. Technical Report, Miocene-Gavin Property, Likely-Horsefly Region, Caribou Mining Division, British Columbia. 43-101 report for Eagle Peak Resources Inc.

Crandall, J. T., 1979: Soil Geochemical Report on the Gavin Property, Brican Resources Ltd. Aris report 7333.

Carter, Dr. N. C. and Barclay, R J., 1984. Geochemical and Geophysical Report Have Claim Group, Longboat Resources Inc. Aris report 12683.

Fox, P.E., 2009. Geochemical Report on the Miracle Property. Aris report 31168

Fox, P.E., 2010. Diamond Drilling Report Miracle Prospect. Aris report 31797.

Fox, P.E., 2013. Geological and Geochemical Report on the Miracle Property. Aris report 33985.

Fox, P.E., 2015. Geological and Geochemical Report on the Miracle Property. Aris report 35395.

Gilmour, W. R., 1984: Geochemical and Geological Assessment Report on the Gavin Property, Brican Resources Ltd. Aris report 12693

Hodgson, C. J., 1970 Report on the Gavin Lake Cu-Mo Property, Amax Inc Aris report 2733.

Panteleyev, A., Bailey, D.G., Bloodgood, M.A. and Hancock, K.D., 1996: Geology and mineral deposits of the Quesnel River - Horsefly map area, central Quesnel Trough, British Columbia; B.C. Ministry of Employment and Investment, Energy and Minerals Division, Geological Survey Branch, Bulletin 97, 155p.

Shore, Greg, 1979: Geophysical Surveys of the Gavin Lake Property, Brican Resources. Aris report 7396.

Wallis, J.E., 1995. Compilation and Evaluation Report Z Mineral Property. Aris report 23942.

Westervelt, R D., 1974: Geochemical Report on the GT 25-60 Mineral Claims Zubex Resources Ltd. Aris report 5105.

APPENDIX I

MIRACLE PROPERTY

**SAMPLE DATA
AND ROCK DSESCRIPTIONS**

UTM NAD 83

sampNo	utmE	utmN	wpt	Date	Sampler	Type	Material	Hor	Color	Topo	Depth	Cu	Mo	Au	Ag
3233	582955	5820092	93	15-Jul-15	Fox,Bailey	Soil	Till	C	Brown	Hillside	5	29.48	0.61	0.8	98
3234	582886	5820030	94	15-Jul-15	Fox,Bailey	Soil	Till	C	Brown	Hillside	5	100.56	0.61	3	161
3235	582801	5819999	95	15-Jul-15	Fox,Bailey	Soil	Till	C	Brown	Hillside	10	52.75	0.41	1.6	63
3236	582703	5819970	96	15-Jul-15	Fox,Bailey	Soil	Till	C	Brown	Hillside	5	62.12	0.55	2.1	60
3237	582612	5819943	97	15-Jul-15	Fox,Bailey	Soil	Till	C	Brown	Hillside	5	46.86	0.54	28	66
3238	582516	5819913	98	15-Jul-15	Fox,Bailey	Soil	Till	C	Brown	Hillside	10	133.53	0.65	4.5	222
3239	582427	5819873	99	15-Jul-15	Fox,Bailey	Soil	Till	C	Brown	Hillside	10	99.79	0.87	7.7	162
3240	582319	5819830	100	15-Jul-15	Fox,Bailey	Soil	Till	C	Brown	Hillside	15	85	0.87	5.8	235
3241	582219	5819783	101	15-Jul-15	Fox,Bailey	Soil	Till	C	Brown	Hillside	5	47.02	1.45	3.7	66
3242	582122	5819761	102	16-Jul-15	Fox,Bailey	Soil	Till	C	Brown	Hillside	10	47.24	1.97	5.8	97
3243	582022	5819770	103	16-Jul-15	Fox,Bailey	Soil	Till	C	Brown	Hillside	5	109.74	3.44	6.8	85
3244	581928	5819808	104	16-Jul-15	Fox,Bailey	Soil	Till	C	Brown	Hillside	5	78.28	3.55	4.8	163
3245	581836	5819772	105	16-Jul-15	Fox,Bailey	Soil	Till	C	Brown	Hillside	10	112.52	3.94	7.1	249
3246	581682	5819713	106	16-Jul-15	Fox,Bailey	Soil	Till	C	Brown	Hillside	10	88.39	4.21	5.2	136
3247	581616	5819705	107	16-Jul-15	Fox,Bailey	Soil	Till	C	Brown	Hillside	15	86.8	3.1	3.5	143
3248	581497	5819702	108	16-Jul-15	Fox,Bailey	Soil	Till	C	Dark Brown	Hillside	5	45.09	1.76	3.1	69
3249	582135	5819678	109	16-Jul-15	Fox,Bailey	Soil	Till	C	Brown	Hillside	5	90.55	3.56	7	121
3250	582261	5819611	110	16-Jul-15	Fox,Bailey	Soil	Till	C	Brown	Hillside	5	58.41	1.74	2.7	181
3251	582394	5819571	111	16-Jul-15	Fox,Bailey	Soil	Till	C	Red/Brown	Hillside	10	83.51	2.66	6	93
3252	582516	5819539	112	16-Jul-15	Fox,Bailey	Soil	Till	C	Brown	Hillside	5	81.47	2.26	4	63
3253	582631	5819507	113	16-Jul-15	Fox,Bailey	Soil	Till	C	Brown	Hillside	5	48.67	1.21	2.8	42
3254	582749	5819474	114	16-Jul-15	Fox,Bailey	Soil	Till	C	Brown	Hillside	10	57.8	0.69	74.8	52
3255	582848	5819449	115	16-Jul-15	Fox,Bailey	Soil	Till	C	Brown	Hillside	12	59.44	1.88	2.3	96
3256	581377	5819701	116	17-Jul-15	Fox,Bailey	Soil	Till	C	Brown	Hillside	15	108.99	4.71	10.3	167
3257	581276	5819702	117	17-Jul-15	Fox,Bailey	Soil	Till	C	Brown	Hillside	5	65.32	3.13	3.3	184
3258	581171	5819694	118	17-Jul-15	Fox,Bailey	Soil	Till	C	Brown	Hillside	10	80.3	3.61	3.8	133
3259	581026	5819695	119	17-Jul-15	Fox,Bailey	Soil	Till	C	Brown	Hillside	5	57.39	2.37	2.5	187
3260	580921	5819692	120	17-Jul-15	Fox,Bailey	Soil	Till	C	Brown	Hillside	4	93.48	4.13	6	203
3261	580798	5819726	121	17-Jul-15	Fox,Bailey	Soil	Till	C	Brown	Hillside	10	100.8	2.09	4.6	146
3262	580692	5819765	122	17-Jul-15	Fox,Bailey	Soil	Till	C	Brown	Hillside	10	72.69	2.46	3.3	204
3263	580612	5819823	123	17-Jul-15	Fox,Bailey	Soil	Till	C	Brown	Hillside	15	74.26	1.7	4.8	99
3264	580635	5819632	124	26-Jul-15	Fox,Bailey	Soil	Till	C	Brown	Hillside	5	81.95	2.94	3.6	203
3265	580530	5819689	125	26-Jul-15	Fox,Bailey	Soil	Till	B	Red/Brown	Hillside	10	75.34	1.68	5.1	111
3266	580445	5819701	126	26-Jul-15	Fox,Bailey	Soil	Till	C	Brown	Flat	5	87.74	2.08	4.4	277
3267	580405	5819616	127	26-Jul-15	Fox,Bailey	Soil	Till	C	Brown	Flat	5	60.17	1.87	2.7	93
3268	580338	5819427	128	26-Jul-15	Fox,Bailey	Soil	Till	C	Brown	Flat	10	71.12	2.33	3.8	70
3269	580276	5819338	129	26-Jul-15	Fox,Bailey	Soil	Till	C	Brown	Flat	12	55.26	2.15	2.4	87
3270	581017	5819786	130	26-Jul-15	Fox,Bailey	Soil	Till	C	Brown	Flat	15	87.51	0.88	14.2	150

3271	581037	5819879	131	26-Jul-15	Fox,Bailey	Soil	Till	C	Brown	Flat	5	60.44	1.88	3.7	124
3272	581050	5819963	133	26-Jul-15	Fox,Bailey	Soil	Till	C	Brown	Hillside	10	59.82	2.6	3.3	67
3273	581020	5820063	134	26-Jul-15	Fox,Bailey	Soil	Till	C	Brown	Hillside	5	34.46	0.82	2.1	85
3274	580952	5820128	135	27-Jul-15	Fox,Bailey	Soil	Till	C	Brown	Hillside	4	105.27	0.93	8.5	54
3276	581563	5819795	137	27-Jul-15	Fox,Bailey	Soil	Till	C	Brown	Hillside	10	85.08	3.49	4.7	142
3277	581940	5819927	138	27-Jul-15	Fox,Bailey	Soil	Till	C	Brown	Hillside	15	70.07	3.03	2.8	156
3278	581891	5820020	139	27-Jul-15	Fox,Bailey	Soil	Till	C	Dark Brown	Hillside	5	123.83	2.79	6.9	164
3279	581826	5820071	140	27-Jul-15	Fox,Bailey	Soil	Till	C	Brown	Hillside	5	57.61	2.08	2.3	112
3280	580608	5819884	141	27-Jul-15	Fox,Bailey	Soil	Till	C	Brown	Hillside	5	61.6	2.25	4.6	104
3281	581166	5818854	142	27-Jul-15	Fox,Bailey	Soil	Till	C	Brown	Hillside	5	61.69	3.1	3.6	194
3282	581235	5818935	143	27-Jul-15	Fox,Bailey	Soil	Till	C	Brown	Hillside	4	68.03	5.83	1.9	138
3283	581338	5818912	144	27-Jul-15	Fox,Bailey	Soil	Till	C	Brown	Hillside	10	102.8	3.61	4.3	98
3284	581443	5818889	145	27-Jul-15	Fox,Bailey	Soil	Till	C	Brown	Hillside	5	91.95	9.12	1.7	170
3285	581556	5818884	146	27-Jul-15	Fox,Bailey	Soil	Till	C	Brown	Hillside	15	118.6	8.08	12.1	150
3286	581675	5818903	147	27-Jul-15	Fox,Bailey	Soil	Till	C	Brown	Hillside	5	52.81	3.48	4.3	67
3287	581773	5818888	148	27-Jul-15	Fox,Bailey	Soil	Till	B	Red/Brown	Hillside	10	53.51	2.51	1.7	136
3288	581900	5818782	149	28-Jul-15	Fox,Bailey	Soil	Till	C	Brown	Hillside	5	35.41	2.08	0.2	177
3289	582026	5818744	150	28-Jul-15	Fox,Bailey	Soil	Till	C	Brown	Hillside	5	137.6	7.36	18.1	207
3290	582119	5818823	151	28-Jul-15	Fox,Bailey	Soil	Till	C	Brown	Hillside	4	112.2	4.29	1.8	369
3291	582225	5818935	152	28-Jul-15	Fox,Bailey	Soil	Till	C	Brown	Hillside	10	97.68	6.36	1	298
3292	582310	5818977	153	28-Jul-15	Fox,Bailey	Soil	Till	C	Red/Brown	Hillside	5	57.62	3.61	4.2	69
5386	582848	5819449		17-Jul-15	Fox,Bailey	Grab	Rock*					0.29	1.66	1.6	34
5387	580798	5819726		17-Jul-15	Fox,Bailey	Grab	Rock*					0.65	17.69	13.1	83
3275	580991	5820083	136	17-Jul-15	Fox,Bailey	Grab	Rock*					0.22	47.17	0.5	26

*** ROCK DESCRIPTIONS:**

Sample 5386: This sample was collected from a small stock- Jefferson monzonite - exposed on the south Jefferson road 2 km from the main turnout. It is a barren leucocratic, equigranular medium grained rock composed of 30% K feldspar, plagioclase and minor biotite.

Sample 5387: sample from a small exposure of a porphyritic quartz monzonite dike consisting of 20% quartz, 25% K feldspar, plagioclase and minor biotite.

Sample 3275: Similar to 5387, weakly pyritic quartz monzite porphyry comprising 35% quartz, 30% K feldspar, sericite-altered plagioclase and trace blocky biotite. Fe oxide and minor pyrite on fractures.

APPENDIX II

MIRACLE PROPERTY

WHOLE ROCK ANALYSIS SAMPLES

BUREAU VERITAS laboratories

Total whole rock with AQ 200

SAMPLE PREPARATION AND ANALYTICAL PROCEDURES					
Procedure Code	Number of Samples	Code Description	Test Wgt (g)	Report Status	Lab
PRP70-250	7	Crush, split and pulverize 250 g rock to 200 mesh			VAN
AQ250	7	1:1:1 Aqua Regia digestion Ultratrace ICP-MS analysis	0.5	Completed	VAN
LF202	7	Total Whole Rock Characterization with AQ200	0.2	Completed	VAN
DRPLP	7	Warehouse handling / disposition of pulps			VAN
DRRJT	7	Warehouse handling / Disposition of reject			VAN

NB: Samples 5388-5391 not included in this report

APPENDIX II
ROCK ANALYSES

Bureau Veritas Commodities Canada Ltd.

Final Report

Client: Eagle Peak Resources Inc.

File Created: 13-Aug-15

Job Number: VAN15001850

Number of: 3

Project: Miracle

Shipment ID:

P.O. Number:

Received: 29-Jul-15

Method	Analyte	Unit	MDL	Sample Type	3275 Rock	5386 Rock	5387 Rock
WGHT	Wgt	KG	0.01		0.55	0.53	0.5
AQ250	Mo	PPM	0.01		0.22	0.29	0.65
AQ250	Cu	PPM	0.01		47.17	1.66	17.69
AQ250	Pb	PPM	0.01		2.24	14.83	5.71
AQ250	Zn	PPM	0.1		52.9	34.7	60.7
AQ250	Ag	PPB	2		26	34	83
AQ250	Ni	PPM	0.1		18.7	3.2	8.6
AQ250	Co	PPM	0.1		34.2	2	7.8
AQ250	Mn	PPM	1		1006	259	661
AQ250	Fe	%	0.01		5.49	0.8	2.98
AQ250	As	PPM	0.1		3.2	4.4	10
AQ250	U	PPM	0.1		0.3	0.7	0.5
AQ250	Au	PPB	0.2		0.5	1.6	13.1
AQ250	Th	PPM	0.1		0.8	2.8	2.7
AQ250	Sr	PPM	0.5		143.8	35.5	25
AQ250	Cd	PPM	0.01		0.06	0.12	0.11
AQ250	Sb	PPM	0.02		0.61	0.21	0.38
AQ250	Bi	PPM	0.02		<0.02	0.06	0.11
AQ250	V	PPM	2		175	2	21
AQ250	Ca	%	0.01		4.55	0.63	0.42
AQ250	P	%	0.001		0.147	0.025	0.106
AQ250	La	PPM	0.5		9.5	11.1	15
AQ250	Cr	PPM	0.5		48.4	1.6	4.5
AQ250	Mg	%	0.01		2.76	0.16	0.16
AQ250	Ba	PPM	0.5		184	850	264.8
AQ250	Ti	%	0.001		0.034	<0.001	0.004
AQ250	B	PPM	20		<20	<20	<20
AQ250	Al	%	0.01		1.7	0.33	0.61
AQ250	Na	%	0.001		0.065	0.038	0.045
AQ250	K	%	0.01		0.19	0.25	0.24
AQ250	W	PPM	0.1		<0.1	<0.1	<0.1
AQ250	Sc	PPM	0.1		23.9	2	4.2
AQ250	Tl	PPM	0.02		0.02	0.05	0.08
AQ250	S	%	0.02		<0.02	0.03	0.04
AQ250	Hg	PPB	5		9	23	21

APPENDIX II
ROCK ANALYSES

AQ250	Se	PPM	0.1	<0.1	<0.1	<0.1
AQ250	Te	PPM	0.02	0.03	<0.02	0.04
AQ250	Ga	PPM	0.1	8	0.7	1.9
LF200	SiO2	%	0.01	45.03	70.97	63.95
LF200	Al2O3	%	0.01	14.34	15.83	17.94
LF200	Fe2O3	%	0.04	10.29	1.69	5.12
LF200	MgO	%	0.01	4.9	0.45	0.54
LF200	CaO	%	0.01	6.85	0.92	1.34
LF200	Na2O	%	0.01	4.99	3.64	3.95
LF200	K2O	%	0.01	1.9	2.69	2.71
LF200	TiO2	%	0.01	0.76	0.22	0.53
LF200	P2O5	%	0.01	0.34	0.07	0.23
LF200	MnO	%	0.01	0.13	0.03	0.08
LF200	Cr2O3	%	0.002	0.011	<0.002	<0.002
LF200	Ni	PPM	20	21	<20	<20
LF200	Sc	PPM	1	28	3	8
LF200	LOI	%	-5.1	10.2	3.3	3.4
LF200	Sum	%	0.01	99.7	99.83	99.82
LF200	Ba	PPM	1	705	988	801
LF200	Be	PPM	1	1	1	2
LF200	Co	PPM	0.2	35.9	2.6	8
LF200	Cs	PPM	0.1	2.5	1.5	3.5
LF200	Ga	PPM	0.5	14	17.9	21.3
LF200	Hf	PPM	0.1	1.4	3	3.7
LF200	Nb	PPM	0.1	2.2	3	5.9
LF200	Rb	PPM	0.1	33.4	65.1	61.5
LF200	Sn	PPM	1	1	1	2
LF200	Sr	PPM	0.5	564.2	255.5	364.4
LF200	Ta	PPM	0.1	0.1	0.3	0.3
LF200	Th	PPM	0.2	1.4	4.2	4.3
LF200	U	PPM	0.1	0.8	2.4	1.9
LF200	V	PPM	8	287	26	85
LF200	W	PPM	0.5	3.7	2	8
LF200	Zr	PPM	0.1	48	101.5	135
LF200	Y	PPM	0.1	15.4	5.9	13.3
LF200	La	PPM	0.1	11.4	12.7	18.7
LF200	Ce	PPM	0.1	22.7	26.3	38.7
LF200	Pr	PPM	0.02	2.92	2.82	4.7
LF200	Nd	PPM	0.3	12.9	10.9	18.8
LF200	Sm	PPM	0.05	2.98	2.17	3.64
LF200	Eu	PPM	0.02	1.09	0.82	1.14
LF200	Gd	PPM	0.05	2.89	1.76	3.15
LF200	Tb	PPM	0.01	0.47	0.24	0.47
LF200	Dy	PPM	0.05	2.81	1.25	2.38
LF200	Ho	PPM	0.02	0.63	0.23	0.5
LF200	Er	PPM	0.03	1.83	0.57	1.39
LF200	Tm	PPM	0.01	0.26	0.09	0.22

APPENDIX II
ROCK ANALYSES

LF200	Yb	PPM	0.05	1.59	0.61	1.4
LF200	Lu	PPM	0.01	0.26	0.1	0.21
TC000	TOT/C	%	0.02	2.18	0.24	0.08
TC000	TOT/S	%	0.02	<0.02	0.03	0.05
AQ200	Mo	PPM	0.1	0.2	0.4	0.6
AQ200	Cu	PPM	0.1	50.1	1.7	17.5
AQ200	Pb	PPM	0.1	2.1	15.2	5.9
AQ200	Zn	PPM	1	55	34	59
AQ200	Ni	PPM	0.1	20.1	3.5	8.7
AQ200	As	PPM	0.5	3.2	4.3	10
AQ200	Cd	PPM	0.1	<0.1	0.1	0.1
AQ200	Sb	PPM	0.1	0.7	0.2	0.4
AQ200	Bi	PPM	0.1	<0.1	<0.1	<0.1
AQ200	Ag	PPM	0.1	<0.1	<0.1	<0.1
AQ200	Au	PPB	0.5	0.9	1	8.6
AQ200	Hg	PPM	0.01	<0.01	0.03	0.02
AQ200	Tl	PPM	0.1	<0.1	<0.1	<0.1
AQ200	Se	PPM	0.5	<0.5	<0.5	<0.5

Norm calculations:

Quartz		36.3	26.7
Plagioclase	39.7	34.9	38.6
Orthoclase	11.8	16.7	16.7
Nephelene	8.9		
Corundum		8.3	6.5
Diopside	16.7		
Hpersthene		1.5	2.5
Ilmenite	1.44	0.42	1
Magnetite	7.4	1.23	3.7
Apatite	0.8	0.16	0.5

APPENDIX III
CERTIFICATES OF ANALYSES

BUREAU VERITAS

SAMPLE PREPARATION AND ANALYTICAL PROCEDURES					
Procedure Code	Number of Samples	Code Description	Test Wgt (g)	Report Status	Lab
Dry at 60C	59	Dry at 60C			VAN
SS80	59	Dry at 60C sieve 100g to -80 mesh			VAN
SVRJT	59	Save all or part of Soil Reject			VAN
AQ250	59	1:1:1 Aqua Regia digestion Ultratrace ICP-MS analysis	0.5	Completed	VAN
DRPLP	59	Warehouse handling / disposition of pulps			VAN
DRRJT	59	Warehouse handling / Disposition of reject			VAN



BUREAU VERITAS MINERAL LABORATORIES
Canada

www.bureauveritas.com/um

Bureau Veritas Commodities Canada Ltd.
9050 Shaughnessy St Vancouver BC V6P 6E5 CANADA
PHONE (604) 253-3158

Client: **Eagle Peak Resources Inc.**
910 - 475 W. Georgia St.
Vancouver BC V6B 4M9 CANADA

Submitted By: Lloyd Tattersall
Receiving Lab: Canada-Vancouver
Received: July 29, 2015
Report Date: August 13, 2015
Page: 1 of 2

CERTIFICATE OF ANALYSIS

VAN15001850.1

CLIENT JOB INFORMATION

Project: Miracle
Shipment ID:
P.O. Number
Number of Samples: 7

SAMPLE DISPOSAL

RTRN-PLP Return
PICKUP-RJT Client to Pickup Rejects

SAMPLE PREPARATION AND ANALYTICAL PROCEDURES

Procedure Code	Number of Samples	Code Description	Test Wgt (g)	Report Status	Lab
PRP70-250	7	Crush, split and pulverize 250 g rock to 200 mesh			VAN
AQ250	7	1:1:1 Aqua Regia digestion Ultratrace ICP-MS analysis	0.5	Completed	VAN
LF202	7	Total Whole Rock Characterization with AQ200	0.2	Completed	VAN
DRPLP	7	Warehouse handling / disposition of pulps			VAN
DRRJT	7	Warehouse handling / Disposition of reject			VAN

ADDITIONAL COMMENTS

Bureau Veritas does not accept responsibility for samples left at the laboratory after 90 days without prior written instructions for sample storage or return.

Invoice To: Eagle Peak Resources Inc.
910 - 475 W. Georgia St.
Vancouver BC V6B 4M9
CANADA

CC: Peter Fox



This report supersedes all previous preliminary and final reports with this file number dated prior to the date on this certificate. Signature indicates final approval; preliminary reports are unsigned and should be used for reference only. All results are considered the confidential property of the client. Bureau Veritas assumes the liabilities for actual cost of analysis only. Results apply to samples as submitted.
*** asterisk indicates that an analytical result could not be provided due to unusually high levels of interference from other elements.



BUREAU VERITAS MINERAL LABORATORIES
Canada

www.bureauveritas.com/um

Bureau Veritas Commodities Canada Ltd.

9050 Shaughnessy St Vancouver BC V6P 6E5 CANADA

PHONE (604) 253-3158

Client: Eagle Peak Resources Inc.

910 - 475 W. Georgia St.

Vancouver BC V6B 4M9 CANADA

Project: Miracle

Report Date: August 13, 2015

Page: 2 of 2

Part: 1 of 5

CERTIFICATE OF ANALYSIS

VAN15001850.1

Method	Analyte	WGHT	AQ250	AQ250	AQ250	AQ250	AQ250	AQ250	AQ250	AQ250	AQ250	AQ250	AQ250	AQ250	AQ250	AQ250	AQ250	AQ250	AQ250	AQ250	AQ250	
		Wgt	Mo	Cu	Pb	Zn	Ag	Ni	Co	Mn	Fe	As	U	Au	Th	Sr	Cd	Sb	Bi	V	Ca	
		kg	ppm	ppm	ppm	ppm	ppb	ppm	ppm	ppm	ppm	%	ppm	ppm	ppb	ppm	ppm	ppm	ppm	ppm	ppm	%
		MDL	0.01	0.01	0.01	0.01	0.1	2	0.1	0.1	1	0.01	0.1	0.1	0.2	0.1	0.5	0.01	0.02	0.02	2	0.01
5386	Rock	0.53	0.29	1.66	14.83	34.7	34	3.2	2.0	259	0.80	4.4	0.7	1.6	2.8	35.5	0.12	0.21	0.06	2	0.63	
5387	Rock	0.50	0.65	17.69	5.71	60.7	83	8.6	7.8	661	2.98	10.0	0.5	13.1	2.7	25.0	0.11	0.38	0.11	21	0.42	
5388	Drill Core	0.39	0.47	182.20	22.22	100.6	143	2.1	19.9	453	3.97	2.7	0.5	7.2	1.2	121.1	0.11	0.32	0.17	156	2.10	
5389	Drill Core	0.42	1.18	45.04	2.62	30.1	33	30.0	21.2	531	4.24	14.8	0.2	4.1	1.0	70.6	0.02	0.35	0.08	138	2.16	
5390	Drill Core	0.26	0.17	15.65	6.65	25.4	67	1.6	2.0	175	0.88	0.8	0.5	5.3	1.6	61.1	0.10	0.15	0.06	18	1.28	
5391	Drill Core	0.41	1.95	104.23	7.17	27.1	79	2.5	11.0	171	1.95	4.4	0.4	34.7	2.3	44.6	0.11	0.14	0.23	18	1.28	
3275	Rock	0.55	0.22	47.17	2.24	52.9	26	18.7	34.2	1006	5.49	3.2	0.3	0.5	0.8	143.8	0.06	0.61	<0.02	175	4.55	



BUREAU VERITAS MINERAL LABORATORIES
Canada

www.bureauveritas.com/um

Bureau Veritas Commodities Canada Ltd.

9050 Shaughnessy St Vancouver BC V6P 6E5 CANADA

PHONE (604) 253-3158

Client: Eagle Peak Resources Inc.

910 - 475 W. Georgia St.

Vancouver BC V6B 4M9 CANADA

Project: Miracle

Report Date: August 13, 2015

Page: 2 of 2

Part: 2 of 5

CERTIFICATE OF ANALYSIS

VAN15001850.1

Method	AQ250	AQ250	AQ250	AQ250	AQ250	AQ250	AQ250	AQ250	AQ250	AQ250	AQ250	AQ250	AQ250	AQ250	AQ250	AQ250	AQ250	AQ250	AQ250	LF200	LF200
Analyte	P	La	Cr	Mg	Ba	Ti	B	Al	Na	K	W	Sc	Tl	S	Hg	Se	Te	Ga	SiO2	Al2O3	
Unit	%	ppm	ppm	%	ppm	%	ppm	%	%	%	ppm	ppm	ppm	%	ppb	ppm	ppm	ppm	%	%	
MDL	0.001	0.5	0.5	0.01	0.5	0.001	20	0.01	0.001	0.01	0.1	0.1	0.02	0.02	5	0.1	0.02	0.1	0.01	0.01	
5386	Rock	0.025	11.1	1.6	0.16	850.0	<0.001	<20	0.33	0.038	0.25	<0.1	2.0	0.05	0.03	23	<0.1	<0.02	0.7	70.97	15.83
5387	Rock	0.106	15.0	4.5	0.16	264.8	0.004	<20	0.61	0.045	0.24	<0.1	4.2	0.08	0.04	21	<0.1	0.04	1.9	63.95	17.94
5388	Drill Core	0.431	13.4	2.8	1.08	72.5	0.126	<20	1.53	0.048	0.17	0.2	2.8	0.05	0.14	8	<0.1	0.05	4.2	42.18	17.59
5389	Drill Core	0.135	4.8	61.2	1.97	59.0	0.183	<20	2.57	0.182	0.23	0.2	13.3	0.04	0.23	<5	0.8	0.04	7.2	43.89	14.12
5390	Drill Core	0.080	9.5	2.6	0.12	36.6	0.061	<20	0.93	0.086	0.12	0.7	1.3	0.02	0.11	<5	0.2	<0.02	3.4	59.67	18.52
5391	Drill Core	0.080	12.6	1.9	0.14	44.3	0.062	<20	1.07	0.095	0.13	0.4	1.6	0.02	0.98	<5	1.1	0.08	3.6	58.69	18.35
3275	Rock	0.147	9.5	48.4	2.76	184.0	0.034	<20	1.70	0.065	0.19	<0.1	23.9	0.02	<0.02	9	<0.1	0.03	8.0	45.03	14.34



BUREAU VERITAS MINERAL LABORATORIES
Canada

www.bureauveritas.com/um

Bureau Veritas Commodities Canada Ltd.

9050 Shaughnessy St Vancouver BC V6P 6E5 CANADA

PHONE (604) 253-3158

Client: Eagle Peak Resources Inc.

910 - 475 W. Georgia St.

Vancouver BC V6B 4M9 CANADA

Project: Miracle

Report Date: August 13, 2015

Page: 2 of 2

Part: 3 of 5

CERTIFICATE OF ANALYSIS

VAN15001850.1

Method	LF200	LF200	LF200	LF200	LF200	LF200	LF200	LF200	LF200	LF200	LF200	LF200	LF200	LF200	LF200	LF200	LF200	LF200	LF200	LF200	
Analyte	Fe2O3	MgO	CaO	Na2O	K2O	TiO2	P2O5	MnO	Cr2O3	Ni	Sc	LOI	Sum	Ba	Be	Co	Cs	Ga	Hf	Nb	
Unit	%	%	%	%	%	%	%	%	%	ppm	ppm	%	%	ppm	ppm	ppm	ppm	ppm	ppm	ppm	
MDL	0.04	0.01	0.01	0.01	0.01	0.01	0.01	0.01	0.002	20	1	-5.1	0.01	1	1	0.2	0.1	0.5	0.1	0.1	
5386	Rock	1.69	0.45	0.92	3.64	2.69	0.22	0.07	0.03	<0.002	<20	3	3.3	99.83	988	1	2.6	1.5	17.9	3.0	3.0
5387	Rock	5.12	0.54	1.34	3.95	2.71	0.53	0.23	0.08	<0.002	<20	8	3.4	99.82	801	2	8.0	3.5	21.3	3.7	5.9
5388	Drill Core	11.51	4.88	14.92	1.73	1.57	1.01	0.95	0.19	<0.002	<20	22	3.0	99.57	676	2	27.7	0.7	19.6	1.6	1.7
5389	Drill Core	14.04	8.99	10.39	1.72	2.05	1.25	0.31	0.19	0.025	58	55	2.6	99.61	681	2	42.5	0.9	16.8	1.6	2.6
5390	Drill Core	3.78	1.15	5.74	5.02	3.30	0.44	0.18	0.08	<0.002	<20	5	1.8	99.68	1396	2	3.5	0.5	18.8	3.1	5.6
5391	Drill Core	4.99	1.16	5.74	4.77	2.85	0.44	0.18	0.08	<0.002	<20	5	2.4	99.67	1344	2	11.1	0.5	20.1	2.9	5.7
3275	Rock	10.29	4.90	6.85	4.99	1.90	0.76	0.34	0.13	0.011	21	28	10.2	99.70	705	1	35.9	2.5	14.0	1.4	2.2



BUREAU VERITAS MINERAL LABORATORIES
Canada

www.bureauveritas.com/um

Bureau Veritas Commodities Canada Ltd.

9050 Shaughnessy St Vancouver BC V6P 6E5 CANADA

PHONE (604) 253-3158

Client: Eagle Peak Resources Inc.

910 - 475 W. Georgia St.

Vancouver BC V6B 4M9 CANADA

Project: Miracle

Report Date: August 13, 2015

Page: 2 of 2

Part: 4 of 5

CERTIFICATE OF ANALYSIS

VAN15001850.1

Method	Analyte	LF200	LF200	LF200	LF200	LF200	LF200	LF200	LF200	LF200	LF200	LF200	LF200	LF200	LF200	LF200	LF200	LF200	LF200	LF200	LF200
		Rb	Sn	Sr	Ta	Th	U	V	W	Zr	Y	La	Ce	Pr	Nd	Sm	Eu	Gd	Tb	Dy	Ho
Unit		ppm	ppm	ppm	ppm	ppm	ppm	ppm	ppm	ppm	ppm	ppm	ppm	ppm	ppm	ppm	ppm	ppm	ppm	ppm	ppm
MDL		0.1	1	0.5	0.1	0.2	0.1	8	0.5	0.1	0.1	0.1	0.1	0.02	0.3	0.05	0.02	0.05	0.01	0.05	0.02
5386	Rock	65.1	1	255.5	0.3	4.2	2.4	26	2.0	101.5	5.9	12.7	26.3	2.82	10.9	2.17	0.82	1.76	0.24	1.25	0.23
5387	Rock	61.5	2	364.4	0.3	4.3	1.9	85	8.0	135.0	13.3	18.7	38.7	4.70	18.8	3.64	1.14	3.15	0.47	2.38	0.50
5388	Drill Core	38.0	1	1248.1	0.1	1.7	0.9	397	0.6	39.7	21.7	18.7	42.3	5.70	27.9	6.42	2.06	5.61	0.82	4.40	0.90
5389	Drill Core	69.6	2	518.5	0.1	2.0	1.2	430	1.2	46.1	15.4	11.8	25.5	3.40	15.1	3.77	1.28	3.42	0.54	3.01	0.65
5390	Drill Core	68.3	<1	921.7	0.2	4.4	2.8	79	2.0	112.2	18.7	23.4	47.2	5.31	20.0	4.44	1.44	3.98	0.57	2.99	0.68
5391	Drill Core	55.7	<1	977.7	0.3	4.3	3.0	87	1.6	114.0	15.4	24.1	45.1	4.85	20.3	3.78	1.39	3.23	0.47	2.80	0.55
3275	Rock	33.4	1	564.2	0.1	1.4	0.8	287	3.7	48.0	15.4	11.4	22.7	2.92	12.9	2.98	1.09	2.89	0.47	2.81	0.63



BUREAU VERITAS MINERAL LABORATORIES
Canada

www.bureauveritas.com/um

Bureau Veritas Commodities Canada Ltd.

9050 Shaughnessy St Vancouver BC V6P 6E5 CANADA

PHONE (604) 253-3158

Client: Eagle Peak Resources Inc.

910 - 475 W. Georgia St.

Vancouver BC V6B 4M9 CANADA

Project: Miracle

Report Date: August 13, 2015

Page: 2 of 2

Part: 5 of 5

CERTIFICATE OF ANALYSIS

VAN15001850.1

Method	Analyte	LF200	LF200	LF200	LF200	TC000	TC000	AQ200	AQ200	AQ200	AQ200	AQ200	AQ200	AQ200	AQ200	AQ200	AQ200	AQ200	AQ200	AQ200	AQ200	
		Er	Tm	Yb	Lu	TOT/C	TOT/S	Mo	Cu	Pb	Zn	Ni	As	Cd	Sb	Bi	Ag	Au	Hg	Tl	Se	
		ppm	ppm	ppm	ppm	%	%	ppm	ppm	ppm	ppm	ppm	ppm	ppm	ppm	ppm	ppm	ppb	ppm	ppm	ppm	ppm
		MDL	MDL	MDL	MDL	MDL	MDL	MDL	MDL	MDL	MDL	MDL	MDL	MDL	MDL	MDL	MDL	MDL	MDL	MDL	MDL	MDL
5386	Rock	0.57	0.09	0.61	0.10	0.24	0.03	0.4	1.7	15.2	34	3.5	4.3	0.1	0.2	<0.1	<0.1	1.0	0.03	<0.1	<0.5	
5387	Rock	1.39	0.22	1.40	0.21	0.08	0.05	0.6	17.5	5.9	59	8.7	10.0	0.1	0.4	<0.1	<0.1	8.6	0.02	<0.1	<0.5	
5388	Drill Core	2.34	0.28	1.68	0.25	0.17	0.15	0.5	193.9	23.1	107	2.4	3.0	0.2	0.4	0.1	0.1	6.0	<0.01	<0.1	<0.5	
5389	Drill Core	1.76	0.23	1.36	0.22	0.11	0.26	1.3	49.2	2.6	33	33.4	15.3	<0.1	0.3	<0.1	<0.1	3.9	<0.01	<0.1	<0.5	
5390	Drill Core	2.03	0.29	1.96	0.31	0.08	0.12	0.1	17.2	7.3	28	1.7	1.4	0.1	0.1	<0.1	<0.1	2.8	<0.01	<0.1	<0.5	
5391	Drill Core	1.67	0.26	1.78	0.28	0.04	1.03	2.2	102.1	6.9	25	2.4	4.6	<0.1	0.1	0.2	<0.1	92.6	<0.01	<0.1	0.8	
3275	Rock	1.83	0.26	1.59	0.26	2.18	<0.02	0.2	50.1	2.1	55	20.1	3.2	<0.1	0.7	<0.1	<0.1	0.9	<0.01	<0.1	<0.5	



QUALITY CONTROL REPORT

VAN15001850.1

Method	WGHT	AQ250	AQ250	AQ250	AQ250	AQ250	AQ250	AQ250	AQ250	AQ250	AQ250	AQ250	AQ250	AQ250	AQ250	AQ250	AQ250	AQ250	AQ250	AQ250	AQ250
Analyte	Wgt	Mo	Cu	Pb	Zn	Ag	Ni	Co	Mn	Fe	As	U	Au	Th	Sr	Cd	Sb	Bi	V	Ca	
Unit	kg	ppm	ppm	ppm	ppm	ppb	ppm	ppm	ppm	%	ppm	ppm	ppb	ppm	ppm	ppm	ppm	ppm	ppm	%	
MDL	0.01	0.01	0.01	0.01	0.1	2	0.1	0.1	1	0.01	0.1	0.1	0.2	0.1	0.5	0.01	0.02	0.02	2	0.01	
Pulp Duplicates																					
5388	Drill Core	0.39	0.47	182.20	22.22	100.6	143	2.1	19.9	453	3.97	2.7	0.5	7.2	1.2	121.1	0.11	0.32	0.17	156	2.10
REP 5388	QC																				
3275	Rock	0.55	0.22	47.17	2.24	52.9	26	18.7	34.2	1006	5.49	3.2	0.3	0.5	0.8	143.8	0.06	0.61	<0.02	175	4.55
REP 3275	QC		0.20	48.33	2.11	53.3	17	19.2	34.7	1002	5.47	3.1	0.3	<0.2	0.8	141.7	0.07	0.62	<0.02	174	4.54
Core Reject Duplicates																					
5387	Rock	0.50	0.65	17.69	5.71	60.7	83	8.6	7.8	661	2.98	10.0	0.5	13.1	2.7	25.0	0.11	0.38	0.11	21	0.42
DUP 5387	QC		0.66	17.26	5.70	60.9	104	8.4	8.1	661	3.03	9.7	0.5	10.5	2.7	25.8	0.09	0.37	0.14	22	0.43
Reference Materials																					
STD DS10	Standard																				
STD DS10	Standard		13.65	155.39	151.98	367.7	1807	72.3	13.2	885	2.73	43.3	3.3	54.2	7.5	63.4	2.40	7.30	12.48	41	1.03
STD GS311-1	Standard																				
STD GS910-4	Standard																				
STD OREAS45EA	Standard																				
STD OREAS45EA	Standard		1.46	646.98	14.48	26.4	238	354.9	45.7	378	20.04	8.7	1.8	52.1	10.5	3.6	0.05	0.33	0.26	288	0.04
STD SO-18	Standard																				
STD SO-19	Standard																				
STD GS311-1 Expected																					
STD GS910-4 Expected																					
STD DS10 Expected		14.69	154.61	150.55	370	2020	74.6	12.9	875	2.7188	43.7	2.59	91.9	7.5	67.1	2.49	8.23	11.65	43	1.0625	
STD OREAS45EA Expected		1.6	709	14.3	31.4	260	381	52	400	23.51	10.3	1.73	53	10.7	3.5	0.03	0.32	0.26	303	0.036	
STD SO-18 Expected																					
STD SO-19 Expected																					
BLK	Blank																				
BLK	Blank																				
BLK	Blank		<0.01	0.02	<0.01	<0.1	7	<0.1	<0.1	<1	<0.01	0.2	<0.1	<0.2	<0.1	<0.5	<0.01	<0.02	<0.02	<2	<0.01
BLK	Blank																				
Prep Wash																					
ROCK-VAN	Prep Blank		0.45	2.83	2.26	35.4	10	0.9	3.8	464	1.83	0.8	0.4	0.6	2.3	21.1	<0.01	0.04	0.04	21	0.51



QUALITY CONTROL REPORT

VAN15001850.1

Method		AQ250	AQ250	AQ250	AQ250	AQ250	AQ250	AQ250	AQ250	AQ250	AQ250	AQ250	AQ250	AQ250	AQ250	AQ250	AQ250	AQ250	LF200	LF200	
Analyte		P	La	Cr	Mg	Ba	Ti	B	Al	Na	K	W	Sc	Ti	S	Hg	Se	Te	Ga	SiO2	Al2O3
Unit		%	ppm	ppm	%	ppm	%	ppm	%	%	%	ppm	ppm	ppm	%	ppb	ppm	ppm	ppm	%	%
MDL		0.001	0.5	0.5	0.01	0.5	0.001	20	0.01	0.001	0.01	0.1	0.1	0.02	0.02	5	0.1	0.02	0.1	0.01	0.01
Pulp Duplicates																					
5388	Drill Core	0.431	13.4	2.8	1.08	72.5	0.126	<20	1.53	0.048	0.17	0.2	2.8	0.05	0.14	8	<0.1	0.05	4.2	42.18	17.59
REP 5388	QC																				
3275	Rock	0.147	9.5	48.4	2.76	184.0	0.034	<20	1.70	0.065	0.19	<0.1	23.9	0.02	<0.02	9	<0.1	0.03	8.0	45.03	14.34
REP 3275	QC	0.151	9.6	47.7	2.75	184.7	0.034	<20	1.69	0.064	0.18	<0.1	23.6	0.03	<0.02	12	<0.1	<0.02	7.9		
Core Reject Duplicates																					
5387	Rock	0.106	15.0	4.5	0.16	264.8	0.004	<20	0.61	0.045	0.24	<0.1	4.2	0.08	0.04	21	<0.1	0.04	1.9	63.95	17.94
DUP 5387	QC	0.106	14.7	4.1	0.17	261.5	0.004	<20	0.63	0.046	0.25	0.1	4.2	0.07	0.04	17	0.2	0.02	2.1	63.72	18.09
Reference Materials																					
STD DS10	Standard																				
STD DS10	Standard	0.075	15.3	52.5	0.76	388.5	0.071	<20	0.97	0.065	0.32	3.7	2.8	4.92	0.28	275	2.5	4.71	4.2		
STD GS311-1	Standard																				
STD GS910-4	Standard																				
STD OREAS45EA	Standard																				
STD OREAS45EA	Standard	0.025	6.6	782.0	0.09	138.9	0.088	<20	2.88	0.022	0.05	<0.1	72.0	0.05	0.04	13	0.4	<0.02	11.2		
STD SO-18	Standard																			58.21	14.09
STD SO-19	Standard																			60.59	13.94
STD GS311-1 Expected																					
STD GS910-4 Expected																					
STD DS10 Expected		0.073	17.5	54.6	0.775	412	0.0817		1.0259	0.067	0.338	3.32	2.8	5.1	0.29	300	2.3	5.01	4.3		
STD OREAS45EA Expected		0.029	7.06	849	0.095	148	0.0984		3.13	0.02	0.053		78	0.072	0.036	10	0.78	0.07	12.4		
STD SO-18 Expected																				58.47	14.23
STD SO-19 Expected																				61.13	13.95
BLK	Blank																				
BLK	Blank																				
BLK	Blank	<0.001	<0.5	<0.5	<0.01	<0.5	<0.001	<20	<0.01	<0.001	<0.01	<0.1	<0.1	<0.02	<0.02	<5	<0.1	<0.02	<0.1		
BLK	Blank																			0.02	<0.01
Prep Wash																					
ROCK-VAN	Prep Blank	0.042	4.6	2.6	0.45	48.6	0.067	<20	0.90	0.110	0.10	<0.1	2.6	<0.02	<0.02	<5	<0.1	<0.02	3.5	70.79	14.28



QUALITY CONTROL REPORT

VAN15001850.1

Method	LF200	LF200	LF200	LF200	LF200	LF200	LF200	LF200	LF200	LF200	LF200	LF200	LF200	LF200	LF200	LF200	LF200	LF200	LF200	LF200	
Analyte	Fe2O3	MgO	CaO	Na2O	K2O	TiO2	P2O5	MnO	Cr2O3	Ni	Sc	LOI	Sum	Ba	Be	Co	Cs	Ga	Hf	Nb	
Unit	%	%	%	%	%	%	%	%	%	ppm	ppm	%	%	ppm	ppm	ppm	ppm	ppm	ppm	ppm	
MDL	0.04	0.01	0.01	0.01	0.01	0.01	0.01	0.01	0.002	20	1	-5.1	0.01	1	1	0.2	0.1	0.5	0.1	0.1	
Pulp Duplicates																					
5388	Drill Core	11.51	4.88	14.92	1.73	1.57	1.01	0.95	0.19	<0.002	<20	22	3.0	99.57	676	2	27.7	0.7	19.6	1.6	1.7
REP 5388	QC																				
3275	Rock	10.29	4.90	6.85	4.99	1.90	0.76	0.34	0.13	0.011	21	28	10.2	99.70	705	1	35.9	2.5	14.0	1.4	2.2
REP 3275	QC																				
Core Reject Duplicates																					
5387	Rock	5.12	0.54	1.34	3.95	2.71	0.53	0.23	0.08	<0.002	<20	8	3.4	99.82	801	2	8.0	3.5	21.3	3.7	5.9
DUP 5387	QC	5.14	0.55	1.36	3.94	2.73	0.54	0.23	0.08	<0.002	<20	8	3.4	99.81	826	1	7.8	3.7	19.9	3.5	6.2
Reference Materials																					
STD DS10	Standard																				
STD DS10	Standard																				
STD GS311-1	Standard																				
STD GS910-4	Standard																				
STD OREAS45EA	Standard																				
STD OREAS45EA	Standard																				
STD SO-18	Standard	7.57	3.37	6.38	3.63	2.14	0.69	0.79	0.39	0.550	45	23	1.9	99.73	488	2	26.8	6.3	17.3	9.0	19.8
STD SO-19	Standard	7.41	2.89	5.95	4.02	1.30	0.70	0.32	0.13	0.492	461	26	1.9	99.74	463	20	22.6	4.1	17.3	3.0	66.3
STD GS311-1 Expected																					
STD GS910-4 Expected																					
STD DS10 Expected																					
STD OREAS45EA Expected																					
STD SO-18 Expected		7.67	3.35	6.42	3.71	2.17	0.69	0.83	0.39	0.55	44	25		514		26.2	7.1	17.6	9.8	19.3	
STD SO-19 Expected		7.47	2.88	6	4.11	1.29	0.69	0.32	0.13	0.5	470	27		486	20	24	4.5	17.5	3.1	68.5	
BLK	Blank																				
BLK	Blank																				
BLK	Blank																				
BLK	Blank	<0.04	<0.01	<0.01	<0.01	<0.01	<0.01	<0.01	<0.01	<0.002	<20	<1	0.0	0.02	1	<1	0.4	0.1	<0.5	<0.1	0.3
Prep Wash																					
ROCK-VAN	Prep Blank	3.22	0.90	2.43	4.56	1.91	0.37	0.10	0.09	<0.002	<20	7	1.2	99.85	717	5	4.2	0.1	14.4	3.7	6.7



QUALITY CONTROL REPORT

VAN15001850.1

Method	LF200	LF200	LF200	LF200	LF200	LF200	LF200	LF200	LF200	LF200	LF200	LF200	LF200	LF200	LF200	LF200	LF200	LF200	LF200	LF200	
Analyte	Rb	Sn	Sr	Ta	Th	U	V	W	Zr	Y	La	Ce	Pr	Nd	Sm	Eu	Gd	Tb	Dy	Ho	
Unit	ppm	ppm	ppm	ppm	ppm	ppm	ppm	ppm	ppm	ppm	ppm	ppm	ppm	ppm	ppm	ppm	ppm	ppm	ppm	ppm	
MDL	0.1	1	0.5	0.1	0.2	0.1	8	0.5	0.1	0.1	0.1	0.1	0.02	0.3	0.05	0.02	0.05	0.01	0.05	0.02	
Pulp Duplicates																					
5388	Drill Core	38.0	1	1248.1	0.1	1.7	0.9	397	0.6	39.7	21.7	18.7	42.3	5.70	27.9	6.42	2.06	5.61	0.82	4.40	0.90
REP 5388	QC																				
3275	Rock	33.4	1	564.2	0.1	1.4	0.8	287	3.7	48.0	15.4	11.4	22.7	2.92	12.9	2.98	1.09	2.89	0.47	2.81	0.63
REP 3275	QC																				
Core Reject Duplicates																					
5387	Rock	61.5	2	364.4	0.3	4.3	1.9	85	8.0	135.0	13.3	18.7	38.7	4.70	18.8	3.64	1.14	3.15	0.47	2.38	0.50
DUP 5387	QC	60.6	1	366.3	0.3	3.9	2.2	85	6.7	134.4	13.0	17.6	40.5	4.48	18.6	4.01	1.17	3.04	0.44	2.41	0.52
Reference Materials																					
STD DS10	Standard																				
STD DS10	Standard																				
STD GS311-1	Standard																				
STD GS910-4	Standard																				
STD OREAS45EA	Standard																				
STD OREAS45EA	Standard																				
STD SO-18	Standard	27.1	14	414.7	6.7	9.3	16.8	200	14.8	273.4	27.2	12.3	26.6	3.16	12.8	2.74	0.83	2.84	0.48	2.75	0.59
STD SO-19	Standard	19.5	19	335.1	4.6	12.3	19.8	165	9.2	103.8	32.1	65.7	159.2	18.01	68.3	12.32	3.48	9.84	1.29	6.82	1.37
STD GS311-1 Expected																					
STD GS910-4 Expected																					
STD DS10 Expected																					
STD OREAS45EA Expected																					
STD SO-18 Expected		28.7	15	407.4	7.4	9.9	16.4	200	14.8	290	29	12.3	27.1	3.45	14	3	0.89	2.93	0.53	3	0.62
STD SO-19 Expected		19.5	19	317.1	4.9	13	19.4	165	9.8	112	35.5	71.3	161	19.4	75.7	13.7	3.81	10.53	1.41	7.5	1.39
BLK	Blank																				
BLK	Blank																				
BLK	Blank																				
BLK	Blank	0.3	<1	<0.5	<0.1	<0.2	<0.1	<8	<0.5	0.2	0.1	0.1	<0.1	0.03	<0.3	<0.05	<0.02	<0.05	<0.01	<0.05	<0.02
Prep Wash																					
ROCK-VAN	Prep Blank	35.5	1	232.3	0.5	3.3	1.5	35	<0.5	141.1	17.2	14.7	27.1	3.21	12.7	2.49	0.89	2.70	0.43	2.65	0.63



QUALITY CONTROL REPORT

VAN15001850.1

Method	LF200	LF200	LF200	LF200	TC000	TC000	AQ200	AQ200	AQ200	AQ200	AQ200	AQ200	AQ200	AQ200	AQ200	AQ200	AQ200	AQ200	AQ200	AQ200	AQ200
Analyte	Er	Tm	Yb	Lu	TOT/C	TOT/S	Mo	Cu	Pb	Zn	Ni	As	Cd	Sb	Bi	Ag	Au	Hg	Tl	Se	
Unit	ppm	ppm	ppm	ppm	%	%	ppm	ppm	ppm	ppm	ppm	ppm	ppm	ppm	ppm	ppm	ppb	ppm	ppm	ppm	
MDL	0.03	0.01	0.05	0.01	0.02	0.02	0.1	0.1	0.1	1	0.1	0.5	0.1	0.1	0.1	0.1	0.5	0.01	0.1	0.5	
Pulp Duplicates																					
5388	Drill Core	2.34	0.28	1.68	0.25	0.17	0.15	0.5	193.9	23.1	107	2.4	3.0	0.2	0.4	0.1	0.1	6.0	<0.01	<0.1	<0.5
REP 5388	QC					0.16	0.15														
3275	Rock	1.83	0.26	1.59	0.26	2.18	<0.02	0.2	50.1	2.1	55	20.1	3.2	<0.1	0.7	<0.1	<0.1	0.9	<0.01	<0.1	<0.5
REP 3275	QC																				
Core Reject Duplicates																					
5387	Rock	1.39	0.22	1.40	0.21	0.08	0.05	0.6	17.5	5.9	59	8.7	10.0	0.1	0.4	<0.1	<0.1	8.6	0.02	<0.1	<0.5
DUP 5387	QC	1.43	0.20	1.34	0.22	0.08	0.05	0.8	18.7	5.7	59	8.7	9.6	0.1	0.3	<0.1	<0.1	10.9	0.01	<0.1	<0.5
Reference Materials																					
STD DS10	Standard							14.2	164.8	154.4	375	76.9	48.1	2.7	8.0	13.0	1.8	52.2	0.29	5.2	2.2
STD DS10	Standard																				
STD GS311-1	Standard					1.00	2.44														
STD GS910-4	Standard					2.65	8.89														
STD OREAS45EA	Standard							1.8	692.0	15.4	29	393.2	10.1	<0.1	0.3	0.3	0.2	54.9	0.01	<0.1	0.6
STD OREAS45EA	Standard																				
STD SO-18	Standard	1.70	0.25	1.68	0.25																
STD SO-19	Standard	3.80	0.51	3.26	0.47																
STD GS311-1 Expected						1.02	2.35														
STD GS910-4 Expected						2.65	8.27														
STD DS10 Expected								14.69	154.61	150.55	370	74.6	43.7	2.49	8.23	11.65	2.02	91.9	0.3	5.1	2.3
STD OREAS45EA Expected								1.6	709	14.3	31.4	381	10.3	0.03	0.32	0.26	0.26	53		0.072	0.78
STD SO-18 Expected		1.84	0.27	1.79	0.27																
STD SO-19 Expected		3.78	0.55	3.55	0.53																
BLK	Blank					<0.02	<0.02														
BLK	Blank							<0.1	<0.1	<0.1	<1	<0.1	<0.5	<0.1	<0.1	<0.1	<0.1	<0.5	<0.01	<0.1	<0.5
BLK	Blank																				
BLK	Blank	<0.03	<0.01	<0.05	<0.01																
Prep Wash																					
ROCK-VAN	Prep Blank	1.92	0.32	2.29	0.41	0.03	0.02	0.4	3.1	2.2	36	0.9	0.9	<0.1	<0.1	<0.1	<0.1	1.1	<0.01	<0.1	<0.5



BUREAU VERITAS MINERAL LABORATORIES
Canada

www.bureauveritas.com/um

Bureau Veritas Commodities Canada Ltd.
9050 Shaughnessy St Vancouver BC V6P 6E5 CANADA
PHONE (604) 253-3158

Client: **Eagle Peak Resources Inc.**
910 - 475 W. Georgia St.
Vancouver BC V6B 4M9 CANADA

Submitted By: Lloyd Tattersall
Receiving Lab: Canada-Vancouver
Received: July 29, 2015
Report Date: August 10, 2015
Page: 1 of 3

CERTIFICATE OF ANALYSIS

VAN15001849.1

CLIENT JOB INFORMATION

Project: Miracle
Shipment ID:
P.O. Number
Number of Samples: 60

SAMPLE DISPOSAL

RTRN-PLP Return
PICKUP-RJT Client to Pickup Rejects

Bureau Veritas does not accept responsibility for samples left at the laboratory after 90 days without prior written instructions for sample storage or return.

Invoice To: Eagle Peak Resources Inc.
910 - 475 W. Georgia St.
Vancouver BC V6B 4M9
CANADA

CC: Peter Fox

SAMPLE PREPARATION AND ANALYTICAL PROCEDURES

Procedure Code	Number of Samples	Code Description	Test Wgt (g)	Report Status	Lab
Dry at 60C	59	Dry at 60C			VAN
SS80	59	Dry at 60C sieve 100g to -80 mesh			VAN
SVRJT	59	Save all or part of Soil Reject			VAN
AQ250	59	1:1:1 Aqua Regia digestion Ultratrace ICP-MS analysis	0.5	Completed	VAN
DRPLP	59	Warehouse handling / disposition of pulps			VAN
DRRJT	59	Warehouse handling / Disposition of reject			VAN

ADDITIONAL COMMENTS



This report supersedes all previous preliminary and final reports with this file number dated prior to the date on this certificate. Signature indicates final approval; preliminary reports are unsigned and should be used for reference only. All results are considered the confidential property of the client. Bureau Veritas assumes the liabilities for actual cost of analysis only. Results apply to samples as submitted.
*** asterisk indicates that an analytical result could not be provided due to unusually high levels of interference from other elements.



Bureau Veritas Commodities Canada Ltd.

9050 Shaughnessy St Vancouver BC V6P 6E5 CANADA

PHONE (604) 253-3158

Client: Eagle Peak Resources Inc.
910 - 475 W. Georgia St.
Vancouver BC V6B 4M9 CANADA

Project: Miracle
Report Date: August 10, 2015

Page: 2 of 3

Part: 1 of 2

CERTIFICATE OF ANALYSIS

VAN15001849.1

Method Analyte Unit MDL	AQ250	AQ250	AQ250	AQ250	AQ250	AQ250	AQ250	AQ250	AQ250	AQ250	AQ250	AQ250	AQ250	AQ250	AQ250	AQ250	AQ250	AQ250	AQ250	AQ250	
	Mo	Cu	Pb	Zn	Ag	Ni	Co	Mn	Fe	As	U	Au	Th	Sr	Cd	Sb	Bi	V	Ca	P	
	ppm	ppm	ppm	ppm	ppb	ppm	ppm	ppm	%	ppm	ppm	ppb	ppm	ppm	ppm	ppm	ppm	ppm	%	%	
	0.01	0.01	0.01	0.1	2	0.1	0.1	1	0.01	0.1	0.1	0.2	0.1	0.5	0.01	0.02	0.02	2	0.01	0.001	
3233	Soil	0.61	29.48	5.04	61.8	98	22.5	12.9	380	3.19	2.8	0.3	0.8	1.1	25.1	0.12	0.18	0.06	90	0.34	0.101
3234	Soil	0.61	100.56	6.03	56.9	161	44.6	22.2	706	4.50	8.9	0.6	3.0	2.9	43.6	0.06	0.50	0.07	130	0.73	0.092
3235	Soil	0.41	52.75	4.82	45.5	63	29.4	16.3	550	3.41	4.9	0.5	1.6	2.0	36.7	0.07	0.37	0.05	104	0.54	0.076
3236	Soil	0.55	62.12	5.48	49.6	60	33.1	15.9	517	3.56	6.6	0.5	2.1	2.4	34.7	0.05	0.43	0.07	102	0.50	0.083
3237	Soil	0.54	46.86	4.49	45.5	66	28.0	14.2	505	3.07	5.4	0.4	28.0	2.2	32.0	0.10	0.37	0.06	90	0.47	0.077
3238	Soil	0.65	133.53	7.57	68.7	222	68.4	30.9	1299	5.94	11.5	0.7	4.5	2.9	115.5	0.16	0.59	0.13	132	1.29	0.167
3239	Soil	0.87	99.79	6.75	63.0	162	54.9	25.3	932	4.51	11.0	0.5	7.7	2.9	51.1	0.14	0.96	0.16	118	0.73	0.108
3240	Soil	0.87	85.00	7.57	67.8	235	66.6	26.3	878	4.68	10.8	0.5	5.8	2.8	47.3	0.13	0.84	0.21	119	0.76	0.062
3241	Soil	1.45	47.02	5.16	49.6	66	34.5	15.1	481	3.35	8.3	0.4	3.7	2.5	34.6	0.07	0.75	0.21	93	0.46	0.079
3242	Soil	1.97	47.24	4.74	51.5	97	33.6	15.9	408	3.37	7.1	0.4	5.8	1.6	32.4	0.07	0.68	0.25	93	0.43	0.062
3243	Soil	3.44	109.74	7.90	66.9	85	66.9	25.2	938	4.43	13.7	0.5	6.8	2.8	56.0	0.13	1.29	0.49	114	0.81	0.123
3244	Soil	3.55	78.28	7.44	65.2	163	52.4	23.3	868	4.15	10.6	0.6	4.8	2.3	49.1	0.12	0.99	0.77	106	0.66	0.075
3245	Soil	3.94	112.52	7.94	75.5	249	55.5	26.4	1050	4.91	9.3	0.7	7.1	1.7	54.7	0.20	1.10	1.45	131	0.77	0.112
3246	Soil	4.21	88.39	6.91	73.2	136	52.8	25.2	673	4.73	8.8	0.4	5.2	1.4	40.8	0.16	1.02	1.05	132	0.62	0.118
3247	Soil	3.10	86.80	6.00	70.8	143	49.2	23.6	557	4.64	9.1	0.4	3.5	1.3	38.6	0.14	0.85	0.69	129	0.52	0.157
3248	Soil	1.76	45.09	5.66	41.9	69	32.8	12.8	485	2.74	6.0	0.5	3.1	3.1	35.2	0.07	0.67	0.32	73	0.47	0.086
3249	Soil	3.56	90.55	6.90	58.7	121	52.8	21.5	775	4.03	11.7	0.5	7.0	2.3	48.8	0.11	1.17	0.49	108	0.69	0.109
3250	Soil	1.74	58.41	5.60	80.4	181	43.1	20.8	944	3.48	7.0	0.5	2.7	1.3	59.1	0.19	0.67	0.26	96	0.57	0.079
3251	Soil	2.66	83.51	6.80	58.1	93	51.0	20.8	700	4.09	11.7	0.5	6.0	2.7	44.0	0.08	1.05	0.41	106	0.57	0.105
3252	Soil	2.26	81.47	7.11	58.8	63	53.3	22.9	880	3.94	10.6	0.5	4.0	2.6	46.8	0.09	0.97	0.33	103	0.62	0.117
3253	Soil	1.21	48.67	5.86	47.7	42	44.3	17.7	633	3.35	9.1	0.4	2.8	2.3	36.3	0.08	0.76	0.21	92	0.48	0.102
3254	Soil	0.69	57.80	5.11	45.7	52	39.1	17.0	614	3.44	7.6	0.4	74.8	2.3	37.1	0.07	0.67	0.11	97	0.50	0.098
3255	Soil	1.88	59.44	6.52	63.9	96	47.9	21.1	855	3.74	8.4	0.5	2.3	1.8	35.9	0.16	0.80	0.52	99	0.50	0.106
3256	Soil	4.71	108.99	6.95	54.5	167	55.2	20.3	769	3.78	9.9	0.5	10.3	2.3	41.6	0.15	1.49	0.82	95	0.57	0.106
3257	Soil	3.13	65.32	5.69	62.4	184	42.6	15.9	448	3.37	6.0	0.5	3.3	1.7	34.1	0.13	0.87	0.68	90	0.45	0.068
3258	Soil	3.61	80.30	6.24	69.5	133	44.4	20.6	625	4.06	8.3	0.5	3.8	1.8	40.5	0.21	1.05	0.74	110	0.54	0.120
3259	Soil	2.37	57.39	6.70	92.9	187	37.2	18.8	680	3.85	6.9	0.4	2.5	1.6	43.5	0.20	0.72	0.60	101	0.59	0.140
3260	Soil	4.13	93.48	7.20	72.1	203	44.8	20.4	816	4.01	8.8	0.5	6.0	1.3	51.6	0.31	1.16	0.87	111	0.72	0.120
3261	Soil	2.09	100.80	8.75	60.9	146	38.5	21.3	845	4.01	10.1	0.5	4.6	3.2	52.5	0.10	1.11	1.89	105	0.66	0.118
3262	Soil	2.46	72.69	6.79	60.3	204	32.3	16.3	729	3.44	7.2	0.4	3.3	1.9	48.3	0.20	0.78	0.53	89	0.63	0.099



Bureau Veritas Commodities Canada Ltd.

9050 Shaughnessy St Vancouver BC V6P 6E5 CANADA

PHONE (604) 253-3158

Client: **Eagle Peak Resources Inc.**
910 - 475 W. Georgia St.
Vancouver BC V6B 4M9 CANADA

Project: Miracle
Report Date: August 10, 2015

Page: 2 of 3

Part: 2 of 2

CERTIFICATE OF ANALYSIS

VAN15001849.1

Method	Analyte	AQ250	AQ250	AQ250	AQ250	AQ250	AQ250	AQ250	AQ250	AQ250	AQ250	AQ250	AQ250	AQ250	AQ250	AQ250	AQ250	AQ250
		La	Cr	Mg	Ba	Ti	B	Al	Na	K	W	Sc	Tl	S	Hg	Se	Te	Ga
Unit		ppm	ppm	%	ppm	%	ppm	%	%	ppm	ppm	ppm	%	ppb	ppm	ppm	ppm	ppm
MDL		0.5	0.5	0.01	0.5	0.001	20	0.01	0.001	0.01	0.1	0.1	0.02	0.02	5	0.1	0.02	0.1
3233	Soil	5.9	62.8	0.48	70.5	0.100	<20	1.40	0.008	0.06	<0.1	4.1	0.03	<0.02	21	<0.1	<0.02	5.2
3234	Soil	12.7	89.9	1.20	118.8	0.125	<20	2.14	0.016	0.17	0.1	12.1	0.08	<0.02	98	0.1	<0.02	6.3
3235	Soil	9.9	64.8	0.87	79.0	0.120	<20	1.37	0.009	0.14	0.1	7.0	0.05	<0.02	40	<0.1	<0.02	4.5
3236	Soil	10.8	77.1	0.87	92.7	0.108	<20	1.59	0.009	0.16	0.1	8.0	0.07	<0.02	54	<0.1	<0.02	5.1
3237	Soil	10.5	65.1	0.76	74.2	0.111	<20	1.26	0.009	0.15	0.1	5.9	0.06	<0.02	31	<0.1	<0.02	4.1
3238	Soil	23.3	61.0	0.84	498.5	0.032	<20	1.49	0.010	0.27	0.2	20.7	0.09	0.02	69	0.8	0.05	4.0
3239	Soil	13.3	74.4	1.24	238.2	0.110	<20	1.95	0.013	0.27	0.2	12.1	0.09	<0.02	105	0.6	0.07	5.9
3240	Soil	13.8	83.1	1.16	252.0	0.121	<20	2.20	0.012	0.32	0.2	11.2	0.13	<0.02	68	0.2	0.04	6.3
3241	Soil	11.6	62.4	0.82	110.1	0.119	<20	1.30	0.010	0.22	0.3	5.7	0.09	<0.02	44	0.2	0.07	4.3
3242	Soil	8.7	58.7	0.91	117.1	0.122	<20	1.40	0.009	0.22	0.2	4.2	0.09	<0.02	81	0.3	0.08	4.4
3243	Soil	13.3	74.2	1.28	227.0	0.122	<20	1.99	0.016	0.46	0.3	10.8	0.17	<0.02	81	0.4	0.08	5.8
3244	Soil	11.7	69.7	1.25	207.6	0.125	<20	1.92	0.013	0.39	0.3	9.7	0.15	<0.02	65	0.5	0.11	6.0
3245	Soil	10.5	71.2	1.44	291.8	0.141	<20	2.13	0.018	0.46	0.5	10.7	0.20	<0.02	82	0.6	0.10	6.3
3246	Soil	7.3	70.9	1.39	237.6	0.147	<20	2.13	0.018	0.39	1.7	7.3	0.16	<0.02	39	0.3	0.13	6.5
3247	Soil	6.2	68.2	1.30	232.8	0.137	<20	2.23	0.013	0.40	1.0	6.0	0.14	<0.02	27	0.2	0.08	5.9
3248	Soil	12.6	56.2	0.72	105.0	0.099	<20	1.14	0.010	0.19	0.2	5.1	0.11	<0.02	37	0.2	<0.02	3.8
3249	Soil	12.2	70.1	1.20	209.6	0.120	<20	1.80	0.013	0.41	0.3	8.6	0.15	<0.02	93	0.3	0.08	5.6
3250	Soil	10.4	62.1	1.02	169.0	0.119	<20	1.70	0.030	0.29	0.2	6.1	0.10	<0.02	26	0.3	0.03	5.5
3251	Soil	12.7	70.7	1.16	186.3	0.122	<20	1.83	0.010	0.35	0.2	9.1	0.13	<0.02	104	0.4	0.08	5.6
3252	Soil	13.3	70.5	1.09	184.0	0.116	<20	1.64	0.012	0.38	0.3	8.7	0.13	<0.02	68	0.5	0.10	5.2
3253	Soil	11.0	67.2	0.92	118.7	0.114	<20	1.34	0.008	0.27	0.2	5.0	0.09	<0.02	43	0.2	<0.02	4.3
3254	Soil	10.5	75.8	0.91	95.3	0.112	<20	1.37	0.009	0.17	0.5	5.8	0.06	<0.02	39	0.3	0.02	4.5
3255	Soil	9.6	66.5	0.99	194.4	0.107	<20	1.53	0.011	0.26	1.5	6.1	0.10	<0.02	40	0.5	0.09	4.9
3256	Soil	12.2	74.7	0.94	168.6	0.105	<20	1.44	0.013	0.32	0.4	9.5	0.13	<0.02	144	0.3	0.08	4.7
3257	Soil	10.4	63.9	0.84	151.1	0.114	<20	1.42	0.013	0.24	0.2	5.7	0.12	<0.02	43	0.2	0.03	4.5
3258	Soil	8.6	69.1	1.03	192.2	0.117	<20	1.74	0.012	0.40	1.4	6.9	0.14	<0.02	55	0.4	0.06	5.1
3259	Soil	7.8	65.4	0.88	210.4	0.103	<20	1.60	0.012	0.22	0.3	5.5	0.10	<0.02	55	0.3	0.07	5.6
3260	Soil	9.8	66.3	1.06	239.1	0.111	<20	1.61	0.015	0.39	0.5	7.1	0.16	0.03	73	0.4	0.07	5.3
3261	Soil	14.1	60.5	0.97	185.1	0.113	<20	1.74	0.015	0.31	0.3	10.3	0.12	<0.02	96	0.4	0.08	5.4
3262	Soil	10.4	58.2	0.75	208.8	0.101	<20	1.46	0.009	0.27	0.3	7.6	0.10	<0.02	82	0.2	0.07	5.0



Bureau Veritas Commodities Canada Ltd.

9050 Shaughnessy St Vancouver BC V6P 6E5 CANADA

PHONE (604) 253-3158

Client: **Eagle Peak Resources Inc.**

910 - 475 W. Georgia St.
Vancouver BC V6B 4M9 CANADA

Project: Miracle

Report Date: August 10, 2015

Page: 3 of 3

Part: 1 of 2

CERTIFICATE OF ANALYSIS

VAN15001849.1

Method	Analyte	AQ250	AQ250	AQ250	AQ250	AQ250	AQ250	AQ250	AQ250	AQ250	AQ250	AQ250	AQ250	AQ250	AQ250	AQ250	AQ250	AQ250	AQ250	AQ250	AQ250
		Mo	Cu	Pb	Zn	Ag	Ni	Co	Mn	Fe	As	U	Au	Th	Sr	Cd	Sb	Bi	V	Ca	P
Unit		ppm	ppm	ppm	ppm	ppb	ppm	ppm	ppm	%	ppm	ppm	ppm	ppm	ppm	ppm	ppm	ppm	ppm	%	%
MDL		0.01	0.01	0.01	0.1	2	0.1	0.1	1	0.01	0.1	0.1	0.2	0.1	0.5	0.01	0.02	0.02	2	0.01	0.001
3263	Soil	1.70	74.26	5.66	43.0	99	39.6	14.0	456	3.33	9.6	0.3	4.8	2.8	33.1	0.09	1.14	0.40	83	0.48	0.076
3264	Soil	2.94	81.95	7.27	61.1	203	39.0	18.3	646	3.71	8.5	0.5	3.6	1.6	40.7	0.18	0.88	0.50	100	0.57	0.091
3265	Soil	1.68	75.34	5.91	49.0	111	32.7	15.4	512	3.25	7.4	0.7	5.1	2.9	42.1	0.09	0.69	0.50	85	0.59	0.081
3266	Soil	2.08	87.74	6.06	60.7	277	43.2	20.0	723	4.03	9.2	0.6	4.4	1.5	56.4	0.16	0.81	0.62	112	0.97	0.083
3267	Soil	1.87	60.17	5.71	51.6	93	37.0	15.0	511	3.12	7.4	0.4	2.7	2.1	46.2	0.11	0.67	0.54	83	0.72	0.099
3268	Soil	2.33	71.12	5.58	45.6	70	35.8	13.7	491	3.18	8.3	0.5	3.8	2.8	43.5	0.06	0.85	0.69	85	0.59	0.097
3269	Soil	2.15	55.26	5.46	46.4	87	33.1	12.4	415	2.84	8.0	0.5	2.4	2.5	37.3	0.06	0.75	0.51	74	0.49	0.081
3270	Soil	0.88	87.51	6.69	63.1	150	46.8	18.4	515	4.17	11.2	0.7	14.2	4.0	52.5	0.07	0.80	0.19	96	0.71	0.096
3271	Soil	1.88	60.44	5.36	55.8	124	40.6	17.1	430	3.76	5.8	0.4	3.7	1.3	36.4	0.11	0.71	0.42	106	0.47	0.071
3272	Soil	2.60	59.82	5.41	44.6	67	36.0	13.9	472	3.20	7.3	0.5	3.3	2.7	35.7	0.06	1.01	0.48	87	0.48	0.099
3273	Soil	0.82	34.46	4.27	37.7	85	23.9	9.0	304	2.20	4.0	0.4	2.1	2.0	30.5	0.05	0.40	0.24	61	0.41	0.069
3274	Soil	0.93	105.27	6.55	59.6	54	50.6	20.1	753	4.07	9.6	0.5	8.5	3.5	43.5	0.05	0.80	0.19	99	0.78	0.109
3276	Soil	3.49	85.08	6.84	59.5	142	60.1	23.4	808	3.73	8.3	0.6	4.7	2.3	44.2	0.09	1.01	0.53	99	0.65	0.090
3277	Soil	3.03	70.07	6.17	60.0	156	36.8	18.7	1036	3.61	8.9	0.3	2.8	1.5	35.1	0.20	1.06	0.31	94	0.59	0.102
3278	Soil	2.79	123.83	7.50	66.9	164	65.5	24.2	861	4.65	13.8	0.6	6.9	2.7	48.9	0.11	1.17	0.40	117	0.75	0.104
3279	Soil	2.08	57.61	5.70	60.3	112	41.9	18.8	539	3.35	7.2	0.4	2.3	1.7	32.9	0.08	0.78	0.30	91	0.49	0.078
3280	Soil	2.25	61.60	5.44	42.9	104	33.0	15.4	578	3.08	7.4	0.4	4.6	2.0	69.3	0.17	1.00	0.35	82	2.16	0.094
3281	Soil	3.10	61.69	4.99	63.6	194	67.8	17.7	386	3.04	5.7	0.4	3.6	1.6	32.1	0.11	0.64	0.63	81	0.44	0.048
3282	Soil	5.83	68.03	5.55	54.2	138	33.1	16.7	660	3.21	8.1	0.4	1.9	1.6	31.9	0.09	0.89	0.83	91	0.46	0.086
3283	Soil	3.61	102.80	5.92	51.1	98	33.9	15.5	547	3.64	7.3	0.5	4.3	2.4	36.1	0.05	1.00	0.88	101	0.52	0.092
3284	Soil	9.12	91.95	5.91	58.9	170	32.9	18.0	437	3.85	9.2	0.3	1.7	1.0	27.9	0.10	1.94	1.16	106	0.34	0.066
3285	Soil	8.08	118.60	8.11	60.6	150	40.1	23.1	865	4.42	12.6	0.5	12.1	2.0	37.5	0.08	2.38	1.41	120	0.57	0.116
3286	Soil	3.48	52.81	5.94	45.8	67	31.4	15.0	530	3.01	6.9	0.4	4.3	2.2	30.9	0.05	0.89	0.54	85	0.46	0.093
3287	Soil	2.51	53.51	4.40	66.0	136	34.4	15.7	408	3.26	4.3	0.3	1.7	1.2	26.1	0.13	0.54	0.35	95	0.43	0.068
3288	Soil	2.08	35.41	4.63	59.3	177	25.7	11.9	281	2.52	3.4	0.3	<0.2	1.3	23.3	0.09	0.41	0.34	71	0.29	0.058
3289	Soil	7.36	137.60	6.32	69.5	207	41.6	26.5	945	5.02	17.5	0.4	18.1	2.4	62.7	0.13	3.52	1.27	127	1.75	0.118
3290	Soil	4.29	112.20	5.90	77.7	369	63.2	25.3	446	4.41	7.6	0.4	1.8	1.2	33.6	0.12	0.76	0.97	122	0.47	0.062
3291	Soil	6.36	97.68	5.65	96.8	298	67.5	27.4	552	5.37	8.0	0.3	1.0	1.0	31.5	0.14	1.48	1.20	148	0.39	0.147
3292	Soil	3.61	57.62	5.30	44.9	69	41.0	17.1	467	3.34	7.4	0.4	4.2	1.7	30.7	0.06	0.83	0.45	95	0.44	0.105
3293	Soil	L.N.R.	L.N.R.	L.N.R.	L.N.R.	L.N.R.	L.N.R.	L.N.R.	L.N.R.	L.N.R.	L.N.R.	L.N.R.	L.N.R.	L.N.R.	L.N.R.	L.N.R.	L.N.R.	L.N.R.	L.N.R.	L.N.R.	L.N.R.



BUREAU VERITAS MINERAL LABORATORIES
Canada

www.bureauveritas.com/um

Bureau Veritas Commodities Canada Ltd.

9050 Shaughnessy St Vancouver BC V6P 6E5 CANADA

PHONE (604) 253-3158

Client: Eagle Peak Resources Inc.
910 - 475 W. Georgia St.
Vancouver BC V6B 4M9 CANADA

Project: Miracle
Report Date: August 10, 2015

Page: 3 of 3

Part: 2 of 2

CERTIFICATE OF ANALYSIS

VAN15001849.1

Method	Analyte	AQ250	AQ250	AQ250	AQ250	AQ250	AQ250	AQ250	AQ250	AQ250	AQ250	AQ250	AQ250	AQ250	AQ250	AQ250	AQ250	AQ250
		La	Cr	Mg	Ba	Ti	B	Al	Na	K	W	Sc	Tl	S	Hg	Se	Te	Ga
Unit		ppm	ppm	%	ppm	%	ppm	%	%	ppm	ppm	ppm	%	ppb	ppm	ppm	ppm	ppm
MDL		0.5	0.5	0.01	0.5	0.001	20	0.01	0.001	0.01	0.1	0.1	0.02	5	0.1	0.02	0.1	0.1
3263	Soil	11.2	62.7	0.70	108.5	0.086	<20	1.24	0.008	0.26	0.6	8.9	0.09	<0.02	54	<0.1	0.05	3.9
3264	Soil	10.9	65.5	0.88	172.2	0.109	<20	1.56	0.016	0.30	0.3	6.9	0.11	<0.02	42	0.4	0.10	5.0
3265	Soil	13.4	54.3	0.83	151.7	0.106	<20	1.52	0.014	0.26	0.3	9.1	0.12	<0.02	62	0.4	0.04	4.7
3266	Soil	11.1	71.2	1.06	262.5	0.120	<20	1.85	0.020	0.27	0.3	7.8	0.15	0.03	56	0.6	0.15	5.7
3267	Soil	11.1	56.3	0.77	149.0	0.098	<20	1.47	0.015	0.17	0.4	6.0	0.09	<0.02	42	0.5	0.08	4.7
3268	Soil	12.7	55.9	0.78	154.1	0.106	<20	1.54	0.018	0.20	0.4	7.3	0.11	<0.02	47	0.2	0.08	4.9
3269	Soil	11.8	51.9	0.71	126.4	0.101	<20	1.50	0.013	0.15	0.3	6.1	0.09	<0.02	61	0.3	0.05	4.8
3270	Soil	16.4	71.0	1.06	179.1	0.103	<20	2.09	0.011	0.24	0.2	11.7	0.11	<0.02	139	0.2	<0.02	6.1
3271	Soil	10.1	74.9	1.03	133.0	0.117	<20	1.56	0.010	0.22	1.4	4.9	0.09	<0.02	36	0.4	<0.02	4.9
3272	Soil	10.9	63.1	0.79	110.6	0.105	<20	1.26	0.010	0.22	0.2	5.4	0.10	<0.02	34	0.4	<0.02	4.0
3273	Soil	10.2	40.6	0.60	80.5	0.096	<20	1.07	0.007	0.12	0.1	3.6	0.06	<0.02	20	0.2	<0.02	3.4
3274	Soil	13.7	70.7	1.08	166.6	0.099	<20	1.70	0.013	0.24	0.2	10.6	0.10	<0.02	127	<0.1	0.05	5.1
3276	Soil	11.2	75.6	1.07	174.5	0.107	<20	1.68	0.012	0.29	0.3	8.0	0.15	<0.02	107	0.2	0.07	4.9
3277	Soil	8.2	61.7	0.76	176.8	0.083	<20	1.19	0.009	0.31	0.7	6.2	0.10	<0.02	61	<0.1	0.04	4.2
3278	Soil	12.3	78.3	1.37	253.3	0.112	<20	2.10	0.019	0.40	0.3	11.6	0.16	<0.02	158	0.2	0.03	5.8
3279	Soil	9.0	66.5	0.84	142.5	0.110	<20	1.41	0.010	0.26	0.2	5.7	0.10	<0.02	54	0.1	0.05	4.5
3280	Soil	8.1	57.3	0.78	130.5	0.081	<20	0.89	0.019	0.18	0.3	5.4	0.08	<0.02	52	<0.1	0.04	2.9
3281	Soil	9.8	93.5	0.96	135.1	0.111	<20	1.43	0.015	0.17	0.5	4.8	0.10	<0.02	35	0.2	0.08	4.2
3282	Soil	10.0	55.1	0.71	140.3	0.098	<20	1.21	0.016	0.27	2.4	5.4	0.12	<0.02	44	0.3	0.09	4.0
3283	Soil	11.7	59.2	0.86	127.8	0.116	<20	1.42	0.021	0.32	0.5	7.9	0.15	<0.02	77	0.3	0.12	4.4
3284	Soil	6.6	47.4	0.80	170.0	0.094	<20	1.49	0.015	0.32	0.4	5.3	0.17	<0.02	39	0.4	0.12	4.6
3285	Soil	13.1	62.7	1.02	259.5	0.103	<20	1.57	0.019	0.47	0.5	12.1	0.19	<0.02	108	0.3	0.09	4.8
3286	Soil	11.0	61.0	0.73	125.8	0.113	<20	1.17	0.015	0.18	0.2	4.5	0.09	<0.02	36	0.2	0.03	3.8
3287	Soil	6.8	66.1	0.87	118.2	0.124	<20	1.38	0.015	0.24	0.3	4.1	0.08	<0.02	29	0.1	0.03	4.6
3288	Soil	6.9	50.9	0.56	102.7	0.099	<20	1.16	0.012	0.13	0.3	3.1	0.06	<0.02	26	0.2	<0.02	4.3
3289	Soil	9.9	60.5	1.35	281.3	0.119	<20	1.91	0.019	0.37	0.4	12.6	0.16	<0.02	238	0.2	0.17	5.7
3290	Soil	6.4	71.0	1.30	224.7	0.148	<20	2.24	0.015	0.31	0.7	6.2	0.12	<0.02	55	0.4	0.11	6.2
3291	Soil	4.0	77.8	1.63	254.4	0.157	<20	2.59	0.014	0.47	0.7	6.2	0.17	<0.02	44	0.3	0.05	7.3
3292	Soil	8.8	76.9	0.87	93.9	0.111	<20	1.26	0.010	0.19	0.3	4.1	0.09	<0.02	33	0.2	0.06	3.7
3293	Soil	L.N.R.	L.N.R.	L.N.R.	L.N.R.	L.N.R.	L.N.R.	L.N.R.	L.N.R.	L.N.R.	L.N.R.	L.N.R.	L.N.R.	L.N.R.	L.N.R.	L.N.R.	L.N.R.	L.N.R.

This report supersedes all previous preliminary and final reports with this file number dated prior to the date on this certificate. Signature indicates final approval; preliminary reports are unsigned and should be used for reference only.



Bureau Veritas Commodities Canada Ltd.
9050 Shaughnessy St Vancouver BC V6P 6E5 CANADA
PHONE (604) 253-3158

Client: Eagle Peak Resources Inc.
910 - 475 W. Georgia St.
Vancouver BC V6B 4M9 CANADA

Project: Miracle
Report Date: August 10, 2015

Page: 1 of 1

Part: 1 of 2

QUALITY CONTROL REPORT

VAN15001849.1

Method	AQ250	AQ250	AQ250	AQ250	AQ250	AQ250	AQ250	AQ250	AQ250	AQ250	AQ250	AQ250	AQ250	AQ250	AQ250	AQ250	AQ250	AQ250	AQ250	AQ250		
Analyte	Mo	Cu	Pb	Zn	Ag	Ni	Co	Mn	Fe	As	U	Au	Th	Sr	Cd	Sb	Bi	V	Ca	P		
Unit	ppm	ppm	ppm	ppm	ppb	ppm	ppm	ppm	%	ppm	ppm	ppb	ppm	ppm	ppm	ppm	ppm	ppm	%	%		
MDL	0.01	0.01	0.01	0.1	2	0.1	0.1	1	0.01	0.1	0.1	0.2	0.1	0.5	0.01	0.02	0.02	2	0.01	0.001		
Pulp Duplicates																						
3249	Soil	3.56	90.55	6.90	58.7	121	52.8	21.5	775	4.03	11.7	0.5	7.0	2.3	48.8	0.11	1.17	0.49	108	0.69	0.109	
REP 3249	QC	3.74	93.61	7.13	62.1	116	54.9	22.5	788	4.13	12.2	0.6	7.5	2.4	50.8	0.14	1.18	0.51	109	0.70	0.113	
3286	Soil	3.48	52.81	5.94	45.8	67	31.4	15.0	530	3.01	6.9	0.4	4.3	2.2	30.9	0.05	0.89	0.54	85	0.46	0.093	
REP 3286	QC	3.31	53.53	5.82	45.7	59	31.0	15.0	520	3.01	6.7	0.4	4.5	2.1	29.8	0.06	0.88	0.51	86	0.46	0.086	
Reference Materials																						
STD DS10	Standard	13.41	163.98	153.50	386.3	1792	78.3	13.4	860	2.71	42.5	2.4	62.9	7.0	57.6	2.35	7.48	10.90	40	1.04	0.071	
STD DS10	Standard	13.93	166.87	162.05	405.9	2078	79.3	14.0	891	2.85	44.5	2.7	49.3	7.9	68.4	2.76	9.10	12.79	41	1.06	0.077	
STD DS10	Standard	12.62	156.35	160.41	385.4	1822	79.1	13.6	839	2.70	41.5	2.7	80.2	7.0	56.6	2.40	7.05	11.20	41	1.03	0.070	
STD OREAS45EA	Standard	1.76	705.75	15.60	32.1	243	390.3	53.3	417	23.42	11.0	2.0	51.0	11.0	3.4	0.02	0.36	0.24	319	0.04	0.027	
STD OREAS45EA	Standard	1.53	670.98	13.96	33.6	238	375.1	49.9	391	21.74	10.7	1.7	49.7	9.6	3.7	0.05	0.38	0.24	306	0.03	0.028	
STD OREAS45EA	Standard	1.61	694.32	15.84	27.4	252	377.9	50.9	393	21.67	9.8	2.0	59.1	10.9	3.4	0.04	0.34	0.26	294	0.04	0.026	
STD DS10 Expected		14.69	154.61	150.55	370	2020	74.6	12.9	875	2.7188	43.7	2.59	91.9	7.5	67.1	2.49	8.23	11.65	43	1.0625	0.073	
STD OREAS45EA Expected		1.39	709	14.3	28.9	260	381	52	400	23.51	9.1	1.73	53	10.7	3.5	0.02	0.2	0.26	303	0.036	0.029	
BLK	Blank	0.02	<0.01	<0.01	<0.1	6	<0.1	<0.1	<1	<0.01	<0.1	<0.1	<0.1	<0.2	<0.1	<0.5	<0.01	<0.02	<0.02	<2	<0.01	<0.001
BLK	Blank	<0.01	<0.01	<0.01	<0.1	<2	<0.1	<0.1	<1	<0.01	0.2	<0.1	<0.2	<0.1	<0.5	<0.01	<0.02	<0.02	<2	<0.01	<0.001	
BLK	Blank	<0.01	<0.01	<0.01	<0.1	4	<0.1	<0.1	<1	<0.01	<0.1	<0.1	<0.2	<0.1	<0.5	<0.01	<0.02	<0.02	<2	<0.01	<0.001	



Bureau Veritas Commodities Canada Ltd.
9050 Shaughnessy St Vancouver BC V6P 6E5 CANADA
PHONE (604) 253-3158

Client: Eagle Peak Resources Inc.
910 - 475 W. Georgia St.
Vancouver BC V6B 4M9 CANADA

Project: Miracle
Report Date: August 10, 2015

Page: 1 of 1

Part: 2 of 2

QUALITY CONTROL REPORT

VAN15001849.1

Method	AQ250	AQ250	AQ250	AQ250	AQ250	AQ250	AQ250	AQ250	AQ250	AQ250	AQ250	AQ250	AQ250	AQ250	AQ250	AQ250	AQ250	
Analyte	La	Cr	Mg	Ba	Ti	B	Al	Na	K	W	Sc	Tl	S	Hg	Se	Te	Ga	
Unit	ppm	ppm	%	ppm	%	ppm	%	%	%	ppm	ppm	ppm	%	ppb	ppm	ppm	ppm	
MDL	0.5	0.5	0.01	0.5	0.001	20	0.01	0.001	0.01	0.1	0.1	0.02	0.02	5	0.1	0.02	0.1	
Pulp Duplicates																		
3249	Soil	12.2	70.1	1.20	209.6	0.120	<20	1.80	0.013	0.41	0.3	8.6	0.15	<0.02	93	0.3	0.08	5.6
REP 3249	QC	12.6	71.4	1.22	212.0	0.125	<20	1.84	0.015	0.41	0.3	8.5	0.16	<0.02	80	0.4	0.04	6.1
3286	Soil	11.0	61.0	0.73	125.8	0.113	<20	1.17	0.015	0.18	0.2	4.5	0.09	<0.02	36	0.2	0.03	3.8
REP 3286	QC	10.6	59.5	0.74	127.0	0.110	<20	1.17	0.017	0.18	0.2	4.4	0.09	<0.02	71	0.2	<0.02	3.7
Reference Materials																		
STD DS10	Standard	15.6	57.0	0.74	383.2	0.075	<20	0.97	0.065	0.32	3.0	2.8	4.70	0.27	270	2.2	4.53	3.8
STD DS10	Standard	18.1	57.5	0.79	424.4	0.082	<20	1.01	0.069	0.34	3.5	2.8	5.23	0.28	303	2.4	4.99	4.4
STD DS10	Standard	15.3	55.9	0.75	379.6	0.073	<20	0.97	0.067	0.32	3.5	2.6	4.99	0.28	281	2.0	4.77	3.8
STD OREAS45EA	Standard	7.2	1022.1	0.09	143.7	0.101	<20	3.15	0.021	0.06	<0.1	75.5	0.06	0.03	12	1.1	0.06	11.7
STD OREAS45EA	Standard	6.5	796.8	0.09	133.0	0.095	<20	2.91	0.022	0.06	<0.1	71.4	0.05	0.03	11	0.8	0.11	11.5
STD OREAS45EA	Standard	7.2	964.1	0.09	143.6	0.099	<20	3.14	0.023	0.05	<0.1	73.2	0.06	0.04	8	0.8	0.05	12.0
STD DS10 Expected		17.5	54.6	0.775	412	0.0817		1.0259	0.067	0.338	3.32	2.8	5.1	0.29	300	2.3	5.01	4.3
STD OREAS45EA Expected		6.57	849	0.095	148	0.0875		3.13	0.02	0.053		78	0.072	0.036	10	0.63	0.07	11.7
BLK	Blank	<0.5	<0.5	<0.01	<0.5	<0.001	<20	<0.01	<0.001	<0.01	<0.1	<0.1	<0.02	<0.02	<5	<0.1	<0.02	<0.1
BLK	Blank	<0.5	<0.5	<0.01	<0.5	<0.001	<20	<0.01	<0.001	<0.01	<0.1	<0.1	<0.02	<0.02	<5	0.1	<0.02	<0.1
BLK	Blank	<0.5	<0.5	<0.01	<0.5	<0.001	<20	<0.01	<0.001	<0.01	<0.1	<0.1	<0.02	<0.02	<5	<0.1	<0.02	<0.1