

KEN ELLERBECK

(Owner & Operator)

TECHNICAL EXPLORATION REPORT

(Event # 5595635)
on

PROSPECTING and EXPLORING

Work done on

Tenures 1038694 1042882

of the 2 Claim

BARN CLAIM GROUP

Kamloops Mining Division
BCGS Map 092I.070 NTS Map 092I09E

Centre of Work
UTM 10 0703359E 5612478N

AUTHOR KEN ELLERBECK, PMP

REPORT SUBMITTED March 29, 2016

TABLE OF CONTENTS

<i>Introduction</i>	3
Purpose	3
Access and Location	3
Property Description	3
History	9
Summary of Work Done	9
<i>Regional and Property Geology</i>	30,32
<i>Technical Data and Interpretation</i>	35
<i>Interpretation and Conclusions</i>	36
<i>Summary and Recommendations</i>	36
<i>Itemized Cost Statement</i>	37
<i>Statement of Qualifications</i>	38
<i>Selected References</i>	39

ILLUSTRATIONS

<i>Figure 1 Location Map</i>	4
<i>Figure 2 Claim Location Google Earth</i>	5
<i>Figure 3 Regional Location Map Google Earth</i>	6
<i>Figure 4 Claim and Index - Map ARIS MapBuilder</i>	7,8
<i>Figure 5 Sample Location Area</i>	10,11
<i>Figure 6 Location and Typical Rock Pictures</i>	12
<i>Figure 7 BARN Regional Geology</i>	31
<i>Figure 8 BARN Local Geology</i>	33,34

TABLES

<i>Table I: Particulars of Grab Samples March 2016</i>	12,35
<i>Table II: Summarized Assay Results- Grab Samples-Ellerbeck (2016) – BARN</i>	32

APPENDIX

<i>Sample Preparation and Method of Analysis</i>	40,41
<i>Certificate of Analysis</i>	42,43,44

INTRODUCTION

PURPOSE

In March 2016 a prospecting program was completed on Tenure 1038694 of the 2 claim BARN CLAIM GROUP. The purpose was to locate, if possible, historic reported geological features (Au, Ag, Cu bearing structures) as well as to prospect for unidentified outcrops and showings of significance.

Subsequently Tenure 1042882 was staked to cover newly discovered mineralization.

Report information was obtained from Selected References and from a March 16, 2015 property examination.

ACCESS AND LOCATION

The property is located 25 km. east of downtown Kamloops, BC.

Access is via East Trans Canada Highway east from Kamloops, BC to the Barnhartvale turnoff, then southeast on the Barnhartvale Road for 9 km. A network of gravel and dirt roads give access to most areas of the claim. The claim is situated on Crown Land but access is via gravel road crossing private property. Permission is required for access but not for exploration.

PHYSIOGRAPHY

The property is located in the Interior Plateau of southern British Columbia. Topography is gentle to steep and elevation varies from 650 to 699 metres above sea level.

Snowfall is not excessive and water is available from Campbell Creek. Temperatures range from +35C to -25C but are generally moderate.

Vegetation consists of bunch grass, open grassy meadows and lightly forest-covered areas of pine and fir trees.

Kamloops is an historic mining center and is a reliable source of experienced and reliable exploration and mining personnel and mining related equipment.

PROPERTY DESCRIPTION

BARN Claim Group

<u>Tenure Number</u>	<u>Type</u>	<u>Claim Name</u>	<u>Good Until</u>	<u>Area (ha)</u>
1038694	Mineral	BARNUM	20160920	20.499
1042882	Mineral	PT	20170316	20.5008

Total Area: 40.9998 ha

Figure 1 LOCATION MAP from MTO Mapbuilder

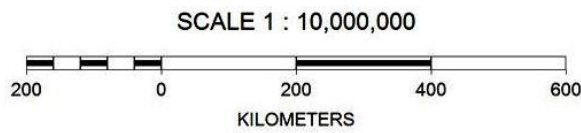


Figure 2 CLAIM LOCATION MAP (Base Map GOOGLE EARTH)



Google earth

feet 3000
km 1



Figure 3 Regional Location Map (Base Map GOOGLE EARTH)

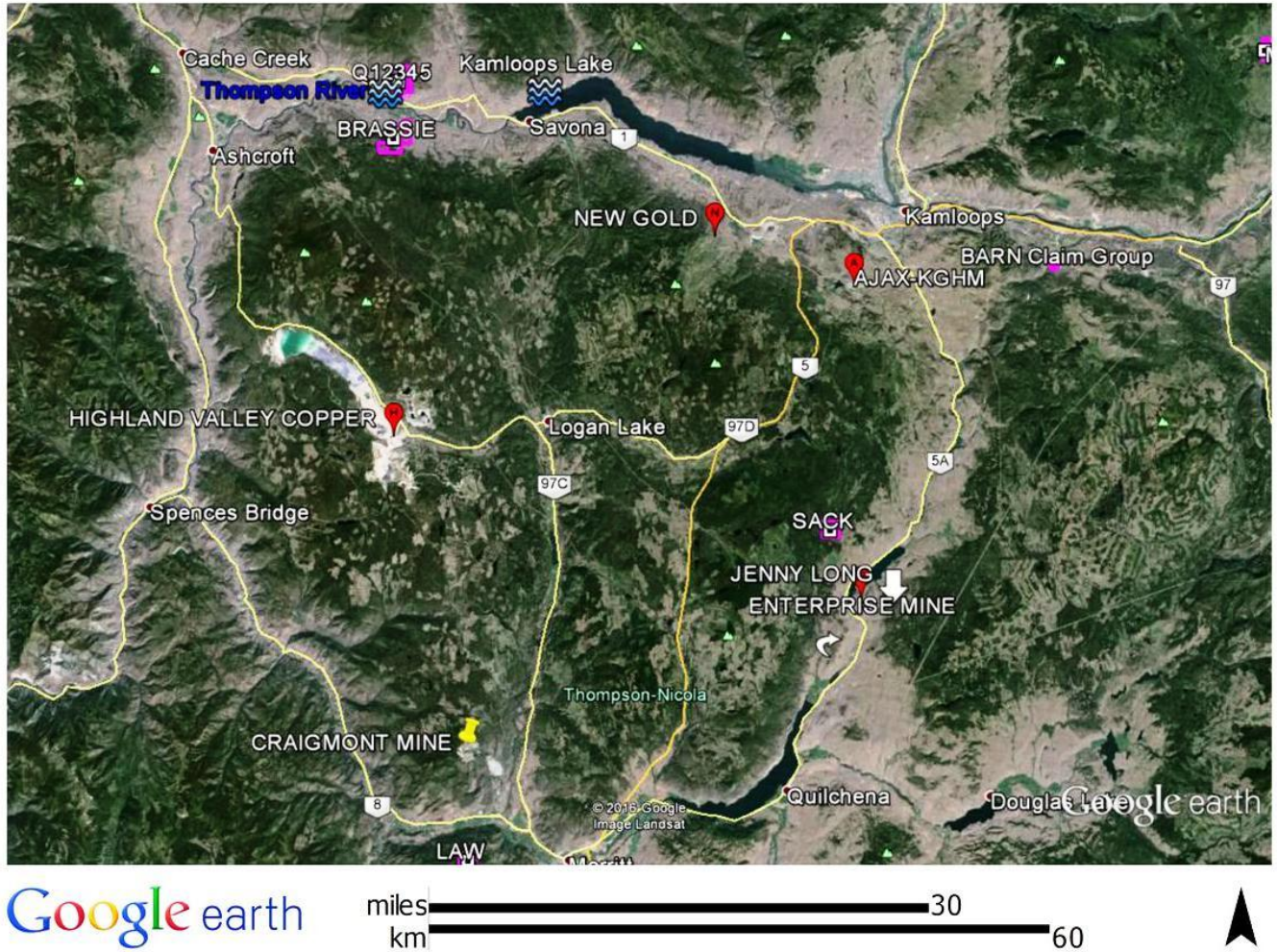
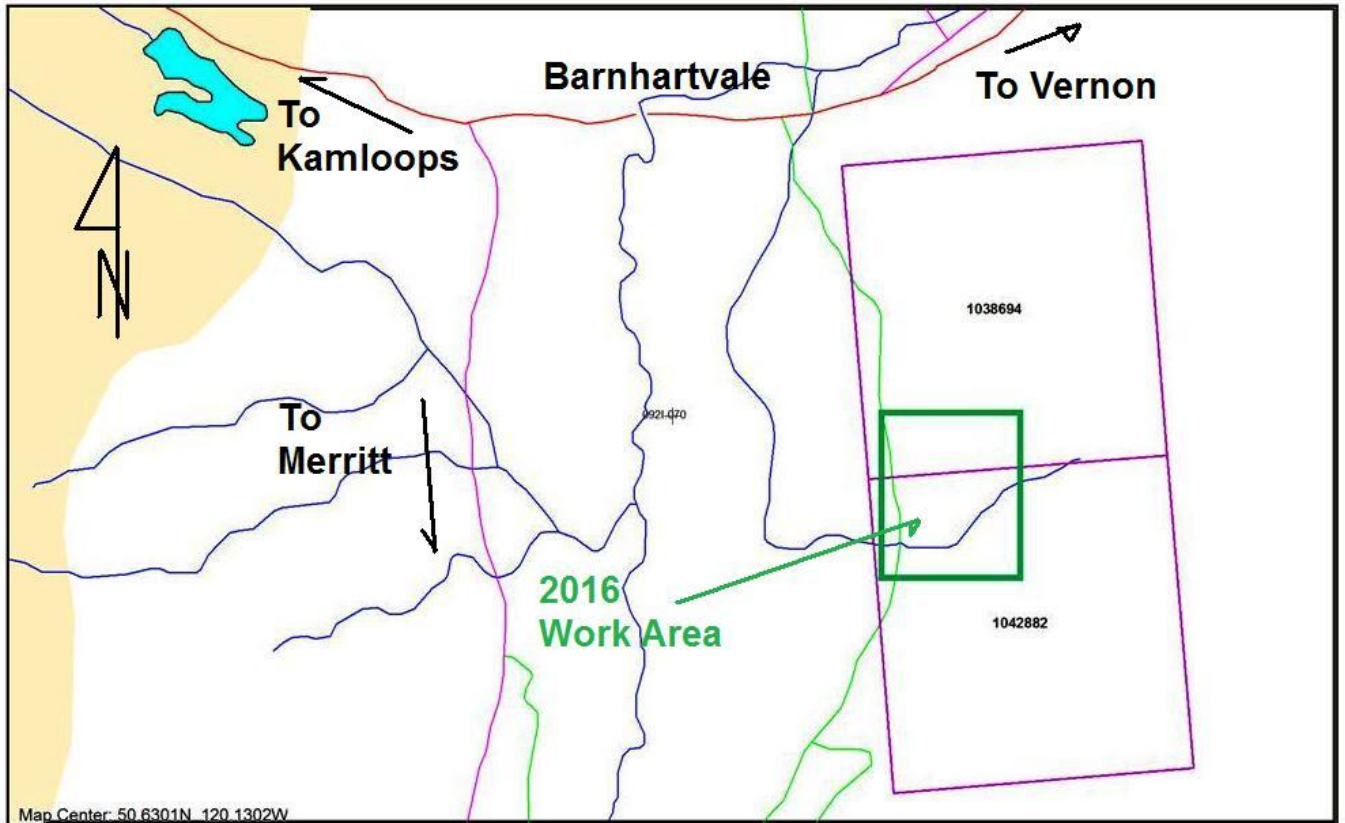


Figure 4 Claim Map and Index Map



HISTORY

From Minfile 092INE128:

The MOT property is located near the fault contact between argillites of the Upper Triassic Nicola Group and granodiorite of the Jurassic Wild Horse batholith. Nicola rocks are highly fractured and brecciated and in places veined with fine quartz stringers and segregations. Feldspar porphyry dikes, with fine pyrite and pyrrhotite, cut the argillites. A 1988 diamond-drill hole (JAG 1-88) intersected highly fractured and brecciated argillite with local zones healed with quartz-carbonate. One of these zones analyzed 8.6 grams per tonne gold over 1.5 metres. Another hole (JAG 4-88) intersected brecciated argillite cut by a pyritic feldspar porphyry dike containing quartz veinlets which analysed up to 1.6 grams per tonne gold (Assessment Report 17556).

About 500 metres northwest of the drilled area, on the north side of the road to Barnhart Vale, some outcrops of biotite feldspar porphyry contain small clots of molybdenite.

Trenching on the property suggests prospecting in the early 1900s but there are no known records of it. In 1971, regional prospecting by Copper Range Exploration Company, Inc. discovered anomalous copper-gold values in rocks and staked the Mot 9-30 claims. Follow-up work consisted of geological mapping and soil (71) and rock chip sampling. In 1973, geological mapping and soil sampling (61) was conducted by Copper Range Exploration Company, Inc. In 1975, the property was restaked by R.A. Dickenson who carried out a small sampling program. In 1979, the Carlin 2 claim was staked by R.A. Dickenson and in that year prospecting carried out on behalf of T. Alexander. In 1980-81, Vantex Resources Inc. optioned the property and carried out a program of soil sampling and VLF-EM surveys.

In 1988, a program of 31.2 kilometres of VLF-EM and magnetometer surveys, geological mapping, 21.6 kilometres of grid establishment and six diamond-drill holes totalling 361.8 metres were completed on the Barn claim on behalf of Jaguar Equities Inc.

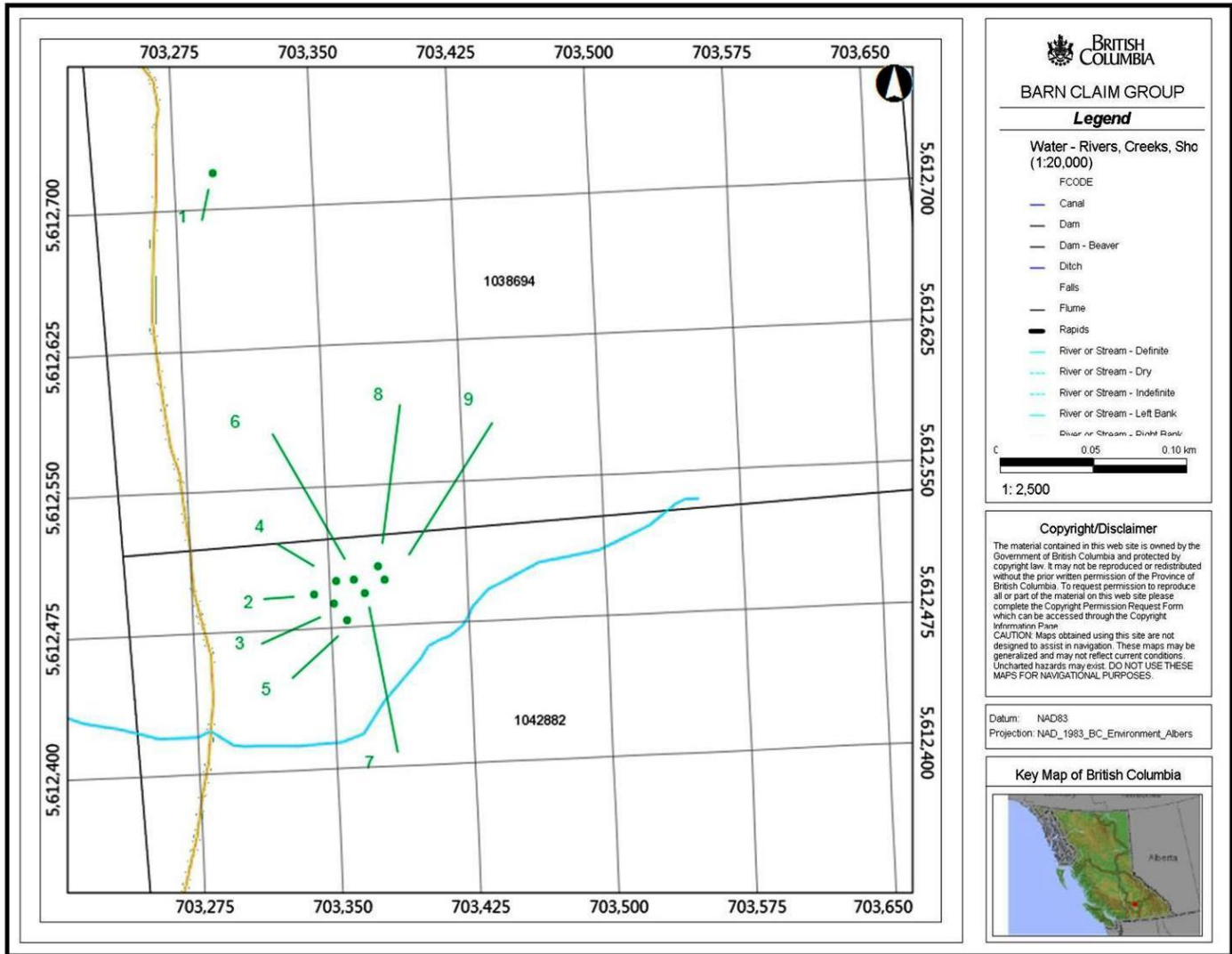
The BARN Claim Group was acquired by online staking by the Author and Current Owner on September 20, 2015 (1038694) and March 16, 2016 (1042882). See Page 3 of this report for Tenure list.

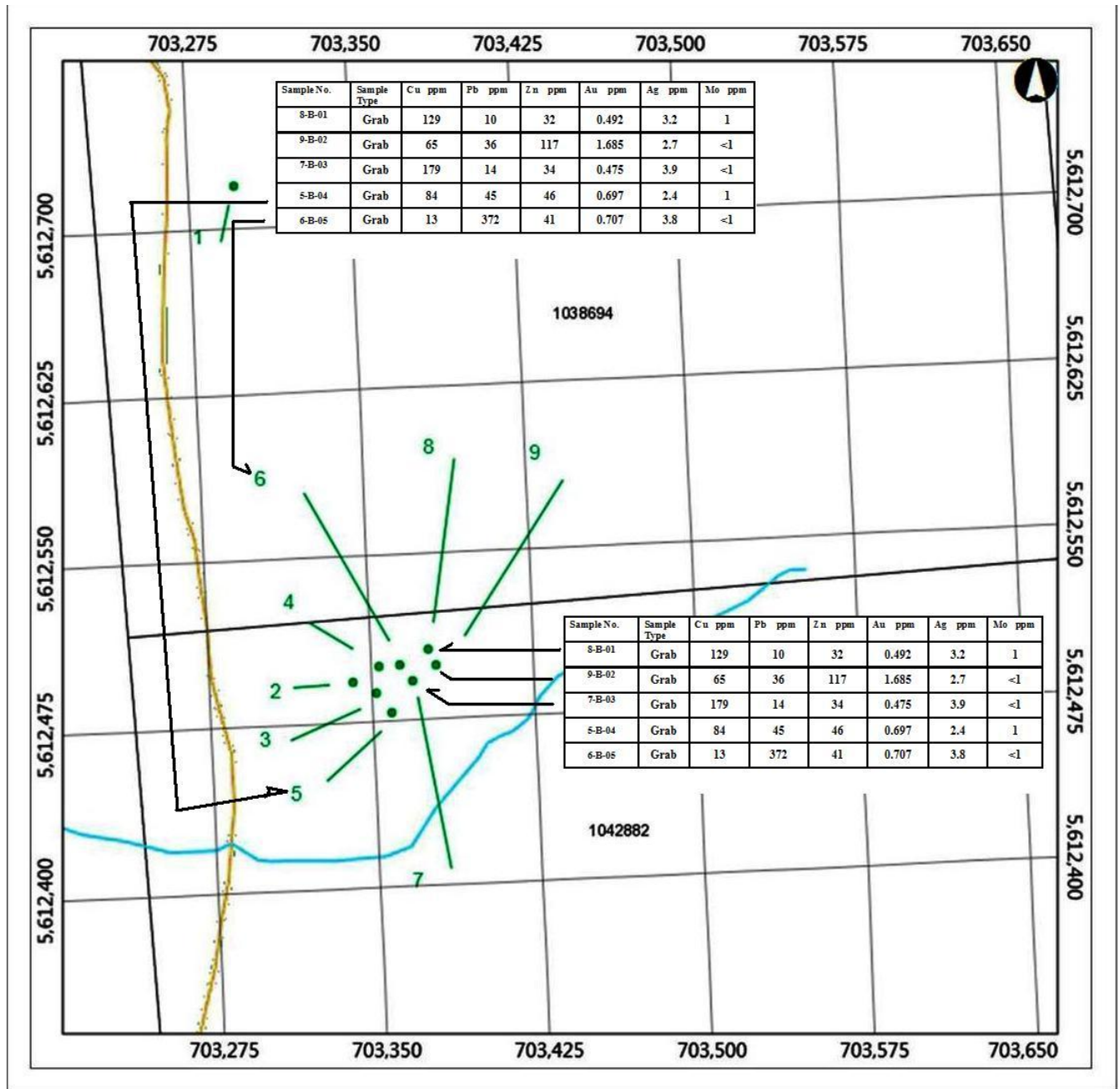
SUMMARY OF WORK DONE MARCH 14, 2016

Prospecting was conducted on 1038694 and 1042882 areas on March 14, 2016. (Figure 4 Index - Work Areas). Newly exposed bedrock/outcrop was sampled within 1038694 and outside the claim. Subsequently Tenure 1042882 was located to cover mineralization discovered outside of Tenure 1038694.

One (1) field day was spent on the claim, including prospecting and travelling to and from the property. One (1) day was spent researching reference material, and a further two (2) days were spent compiling data, drafting and writing this report.

Figure 5 Sample Location Area Map 1038694, 1042882





March 2016 WORK PROGRAM

Sampling Program - The author was on the BARN Claim Group in March 2016 to select rock samples from a newly created quarry lying within the Claim to determine if valuable mineralization is present and to understand the geology on the Property. Nine (9) rock grab samples were taken from Tenure 1038694 and 1042882 to check for possible mineralization within the claim group. Five (5) grab samples were submitted for assay.

Table I. Particulars of Grab Samples - ELLERBECK (2016) BARN

LOCATION / SAMPLE #	UTM LOCATION		DESCRIPTION - OUTCROP
1	0703302	5612707	Breccia – argillite-iron stained/veinlets-crumbly
2	0703343	5612491	Feldspar porphyry dyke, amydules, Fe stain, altered
3	0703352	5612486	Altered feldspar porphyry dyke, banding, colours
4	0703352	5612488	Altered feldspar porphyry dyke
5-B-04 Lab	0703359	5612478	Dyke cut by quartz veinlets, pyrite, chalcopyrite
6-B-05 Lab	0703362	5612499	Limestone-Fossil-quartz swarm-carbonate-sulphides
7-B-03 Lab	0703366	5612493	Silicified feldspar dyke, sulphides in fractures
8-B-01 Lab	0703370	5612498	Limestone-silicified-quartz-sulphide stringers, pyrite
9-B-02 Lab	0703370	5612500	Silicified feldspar dyke, pyrite stringers

FIGURE 6**LOCATION AND TYPICAL ROCK PICTURES****1 LOCATION AND TYPICAL ROCK PICTURE**

1 LOCATION AND TYPICAL ROCK PICTURE



2 LOCATION AND TYPICAL ROCK PICTURE



2 LOCATION AND TYPICAL ROCK PICTURE



3 LOCATION AND TYPICAL ROCK PICTURE



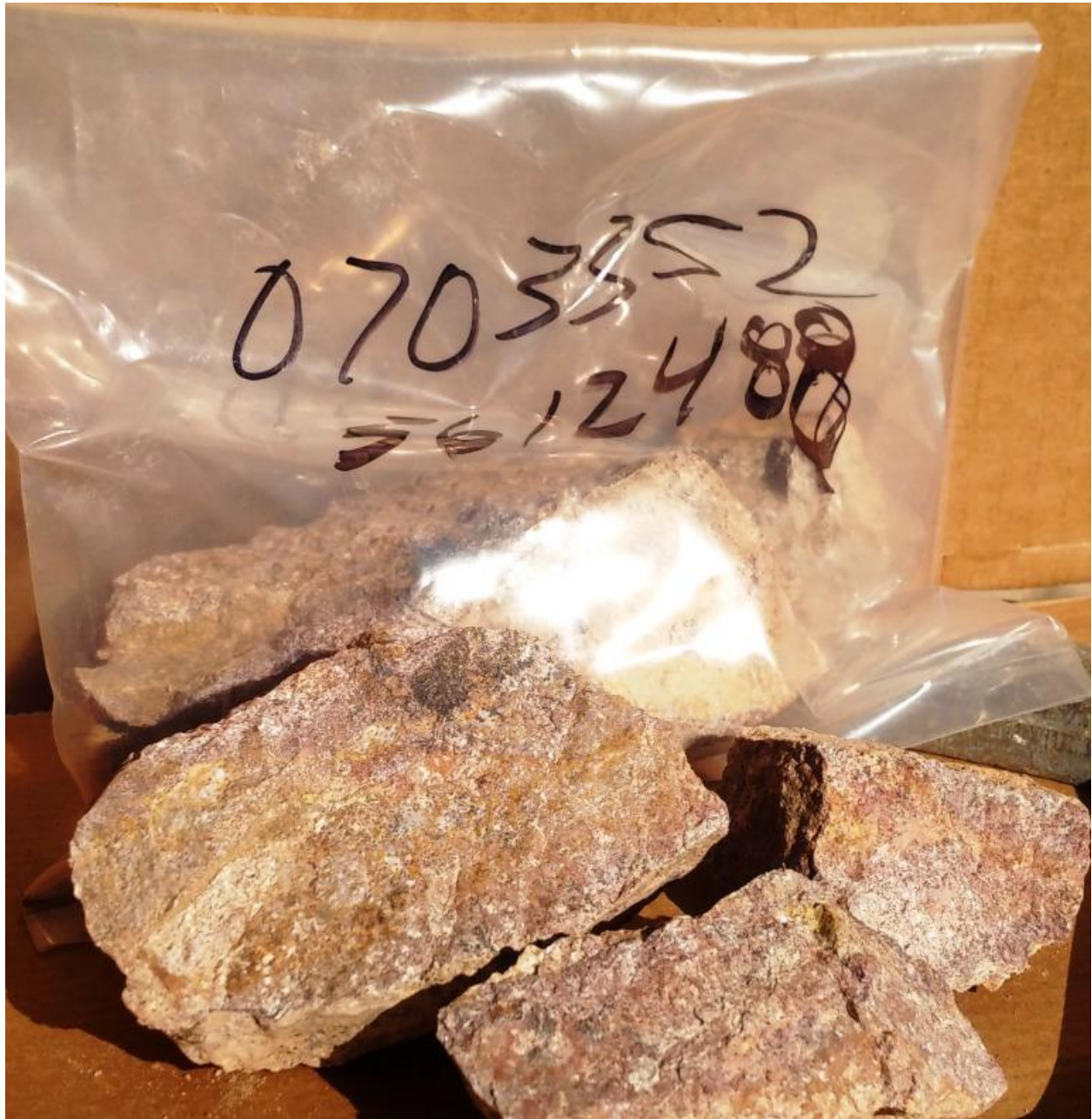
3 LOCATION AND TYPICAL ROCK PICTURE



4 LOCATION AND TYPICAL ROCK PICTURE



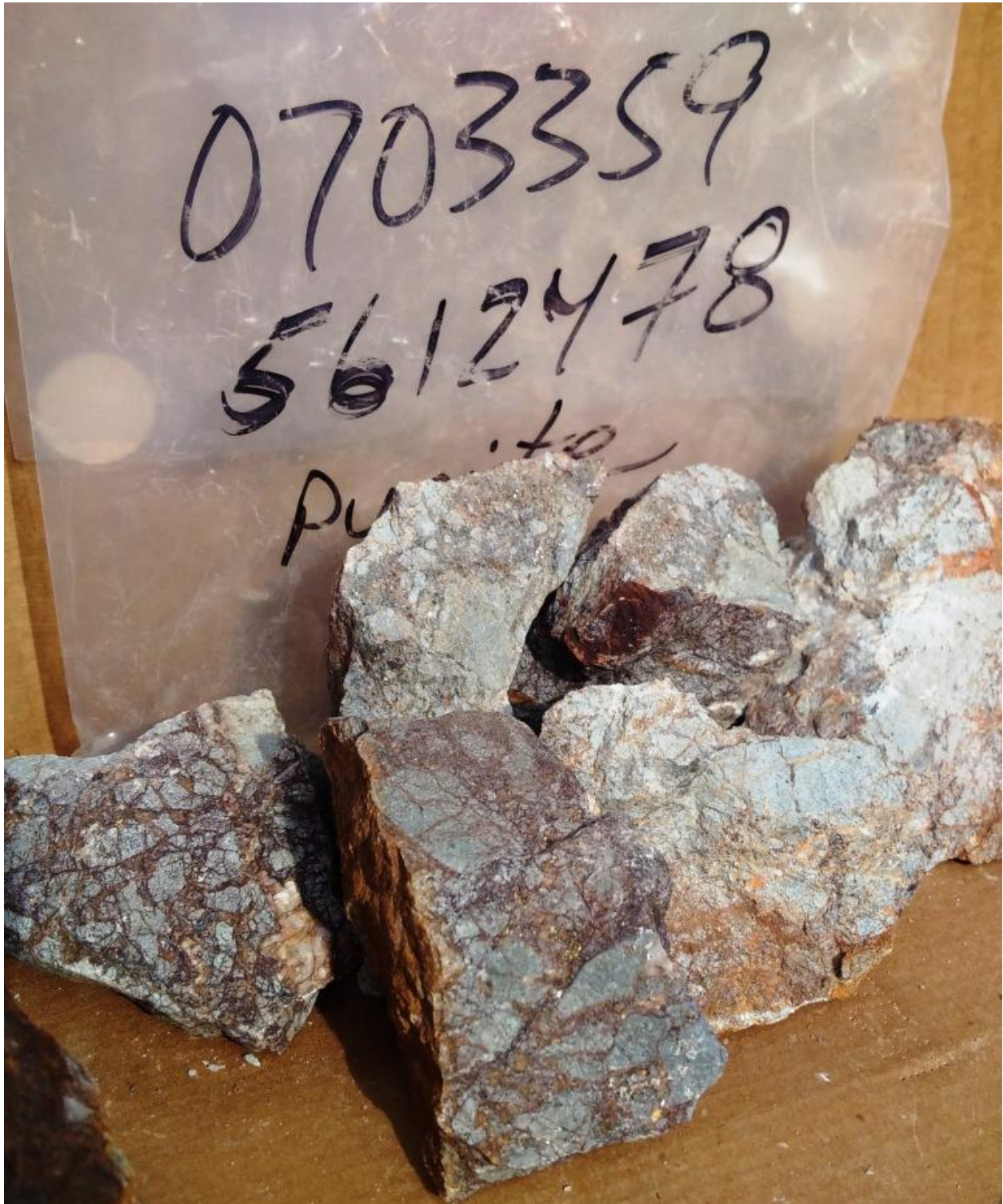
4 LOCATION AND TYPICAL ROCK PICTURE



5 LOCATION AND TYPICAL ROCK PICTURE – to Lab



5 LOCATION AND TYPICAL ROCK PICTURE – to Lab



6 LOCATION AND TYPICAL ROCK PICTURE – to Lab



6 LOCATION AND TYPICAL ROCK PICTURE – to Lab



7 LOCATION AND TYPICAL ROCK PICTURE – to Lab



7 LOCATION AND TYPICAL ROCK PICTURE – to Lab



8 LOCATION AND TYPICAL ROCK PICTURE – to Lab



8 LOCATION AND TYPICAL ROCK PICTURE – to Lab



9 LOCATION AND TYPICAL ROCK PICTURE – to Lab



9 LOCATION AND TYPICAL ROCK PICTURE – to Lab



SUMMARY OF REGIONAL AND PROPERTY GEOLOGY

REGIONAL GEOLOGY

From AR08635, Sawyer Consultants, for T. Alexander, May 1979

GEOLOGY

*The Carlin 2 (now **BARN Claim Group**) claim area is underlain by a mixed assemblage of Palaeozoic sediments of the Cache Creek group, younger intrusive rocks of presumed Cretaceous age, and Tertiary sediments and volcanic rocks of the Kamloops Group.*

Cache Creek Group

Sediments of this unit underlie the greater part of the Carlin 2 claim area and include medium to dark coloured, fairly thin bedded argillite, with, in places, chert horizons, as well as some beds of a medium grained greywacke and minor limestone. All of the rocks of the Cache Creek group are highly fractured and brecciated.

Intrusive Rocks

*The area is host to a number of igneous intrusions which are assumed to be part of the Cretaceous Coast Intrusions. Some of them may be Tertiary in age. A large granodiorite body, Horse Mountain batholith, lies immediately to the west however at this stage this intrusive does not appear to bear any relationship to the alteration and pyritization which is associated with the gold mineralization. Numerous **dykes of feldspar porphyry** cut the Cache Creek sediments and are generally associated with finely disseminated pyrite and minor pyrrhotite with attendant rusty limonitic weathering. **One such dyke intrudes the Cache Creek sediments on the main hill area and is exposed in some of the trenches there.** At this location this feldspar porphyry dyke is cut by numerous quartz stringers and veinlets and it is with these rocks that the gold mineralization appears to be associated. According to the later Copper Range Exploration workers a biotite feldspar porphyry intrusive outcrops one quarter mile north of the intersection of the BarnhartVale and Campbell Creek roads and contains fine grains of disseminated pyrite and pyrrhotite and small amounts of molybdenite however it does not exhibit any quartz stockwork.*

A more massive intrusive of dioritic appearance outcrops along the main road at Barnhartvale. It has a weathered appearance with the mafic minerals being chloritized but does not appear to include any extensive quartz veining, nor, as far as is known, to be associated with any gold mineralization.

Kamloops Group

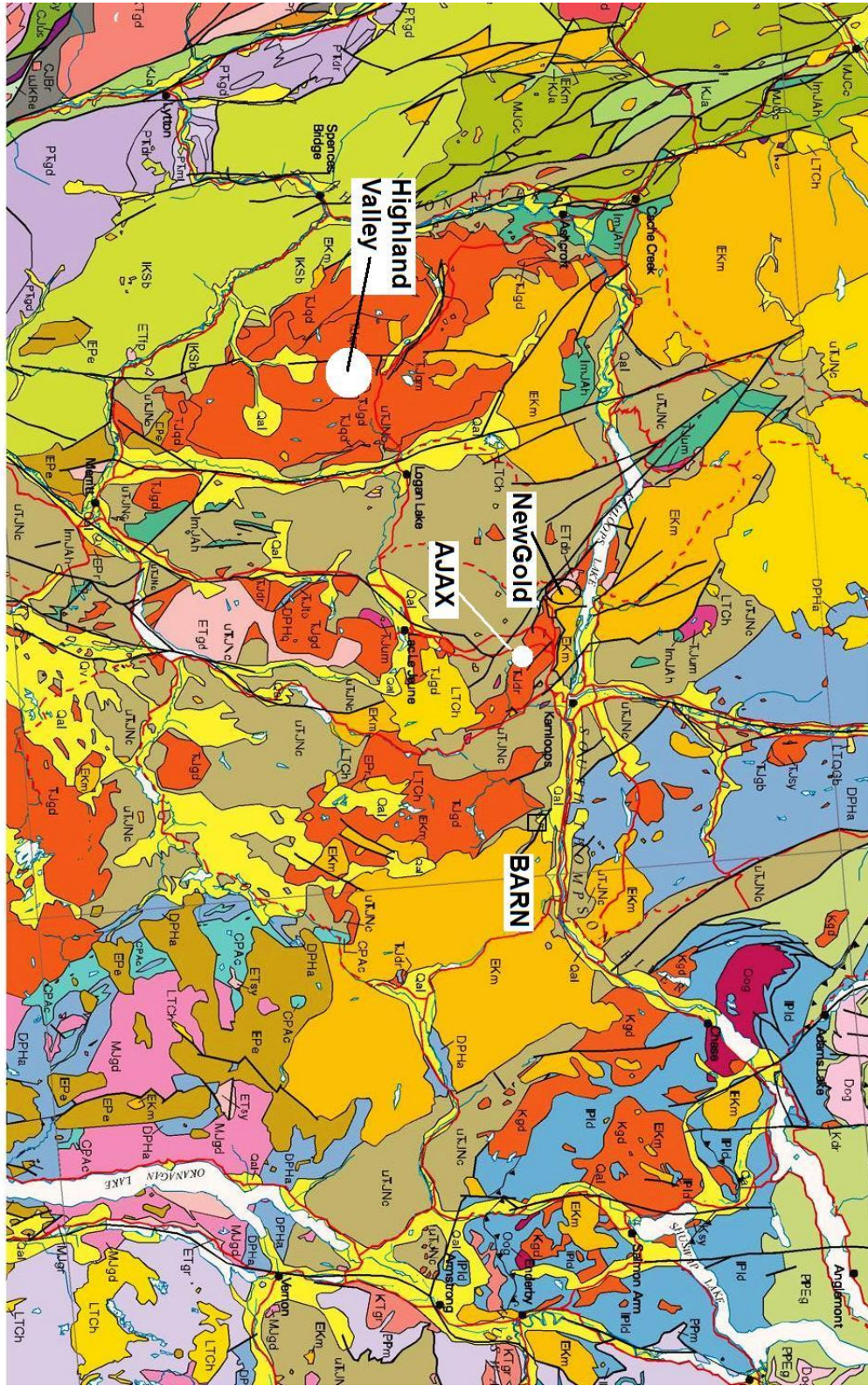
Tranquille Beds - According to Purdy, of Copper Range Exploration Company Inc., beds of Tranquille conglomerate are exposed on the downthrown side of a north-northeast striking fault approximately 1800 feet east of Barnhart Vale.

This is an iron stained yellow to brown conglomerate with a sandy matrix enclosing pebbles and cobbles of feldspar porphyry and/or argillite which appear to be the host rocks of the gold mineralization.

Kamloops Group Volcanics

Rocks of this group, of Tertiary age, include flows of andesitic to basaltic composition and are the youngest rocks of this prospect area. They overlie the earlier rocks and outcrop to the east of the claim area.

Figure 7 BARN CLAIM GROUP Regional Geology



LOCAL GEOLOGY

From Minfile 092INE128

The MOT property is located near the fault contact between argillites of the Upper Triassic Nicola Group and granodiorite of the Jurassic Wild Horse batholith. Nicola rocks are highly fractured and brecciated and in places veined with fine quartz stringers and segregations. Feldspar porphyry dikes, with fine pyrite and pyrrhotite, cut the argillites.

A 1988 diamond-drill hole (JAG 1-88) intersected highly fractured and brecciated argillite with local zones healed with quartz-carbonate. One of these zones analysed 8.6 grams per tonne gold over 1.5 metres. Another hole (JAG 4-88) intersected brecciated argillite cut by a pyritic feldspar porphyry dike containing quartz veinlets which analysed up to 1.6 grams per tonne gold (Assessment Report 17556). About 500 metres northwest of the drilled area, on the north side of the road to Barnhart Vale, some outcrops of biotite feldspar porphyry contain small clots of molybdenite.

Trenching on the property suggests prospecting in the early 1900s but there are no known records of it. In 1971, regional prospecting by Copper Range Exploration Company, Inc. discovered anomalous copper-gold values in rocks and staked the Mot 9-30 claims. Follow-up work consisted of geological mapping and soil (71) and rock chip sampling. In 1973, geological mapping and soil sampling (61) was conducted by Copper Range Exploration Company, Inc. In 1975, the property was restaked by R.A. Dickenson who carried out a small sampling program. In 1979, the Carlin 2 claim was staked by R.A. Dickenson and in that year prospecting carried out on behalf of T. Alexander. In 1980-81, Vantex Resources Inc. optioned the property and carried out a program of soil sampling and VLF-EM surveys. In 1988, a program of 31.2 kilometres of VLF-EM and magnetometer surveys, geological mapping, 21.6 kilometres of grid establishment and six diamond-drill holes totalling 361.8 metres were completed on the Barn claim on behalf of Jaguar Equities Inc.

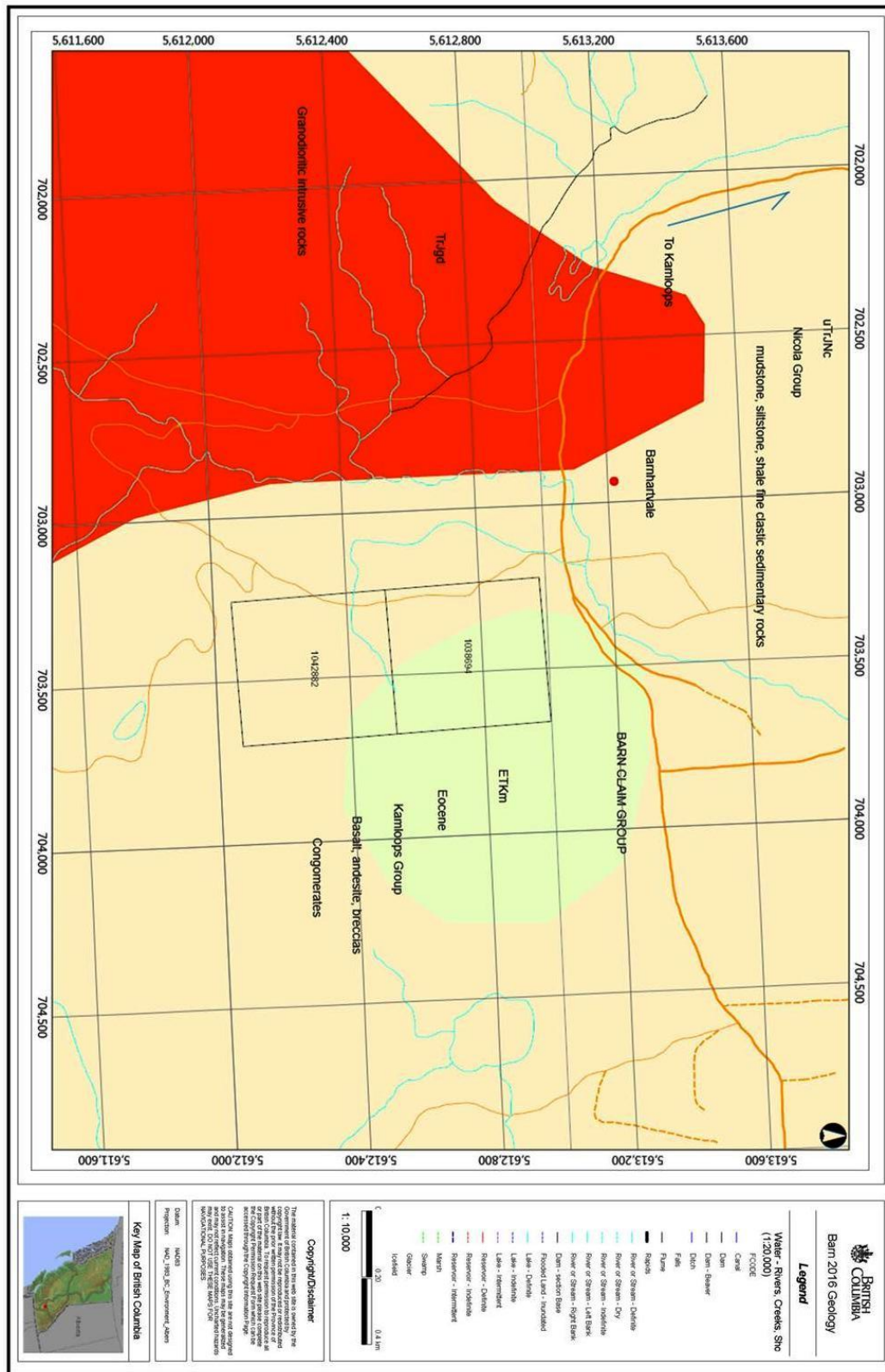
From AR08635, Sawyer Consultants, for T. Alexander, May 1979

MINERALIZATION

Actual sulphide mineralization observed on the ground is relatively minor in amount and is predominantly pyrite associated with the fractured porphyry intrusive and in places in adjacent Cache Creek rocks. Minor pyrrhotite and chalcopyrite also occur in places. From the sampling done by Copper Range Exploration and by Dickinson and McClaren the major zones of gold mineralization detected so far appear to be related quite specifically to these fractured pyritic zones, and are thus assumed to have a genetic relationship with the feldspar porphyry intrusions.

There is some evidence to suggest also that there may have been some mechanical processes at work in localizing or concentrating the gold in fractures or fissures, thus chip sampling of surface may return values which are lower than true values.

Figure 8 BARN CLAIM GROUP Local Geology





SUMMARY OF REGIONAL AND PROPERTY GEOLOGY (.....continued)

Prospecting on the BARN Claim Group on March 18, 2016 confirmed the presence of rock types and mineralization similar to those historically reported in the claim area. The newly discovered alteration zone is exposed in a quarry south of the historic MOT showing.

The Author did not locate the historic BARN (MOT) showings/trenches referred to in historic reports.

Elevated levels of Au, Ag and Cu were found in Samples 1-5.

Elevated levels of Pb, Zn were found in Samples 1-5.

Table I. Particulars - Grab Samples taken by ELLERBECK (March 2016) BARN

LOCATION / SAMPLE #	UTM LOCATION		DESCRIPTION - OUTCROP
1	0703302	5612707	Breccia – argillite-iron stained/veinlets-crumby
2	0703343	5612491	Feldspar porphyry dyke, amydules, Fe stain, altered
3	0703352	5612486	Altered feldspar porphyry dyke, banding, colours
4	0703352	5612488	Altered feldspar porphyry dyke
5-B-04 Lab	0703359	5612478	Dyke cut by quartz veinlets, pyrite, chalcopyrite
6-B-05 Lab	0703362	5612499	Limestone-Fossil-quartz swarm-carbonate-sulphides
7-B-03 Lab	0703366	5612493	Silicified feldspar dyke, sulphides in fractures
8-B-01 Lab	0703370	5612498	Limestone-silicified-quartz-sulphide stringers, pyrite
9-B-02 Lab	0703370	5612500	Silicified feldspar dyke, pyrite stringers

TECHNICAL DATA AND INTERPRETATION

Table II. Summarized Assay Results- Grab Samples-Ellerbeck (March 2016) – BARN

Sample No.	Sample Type	Cu ppm	Pb ppm	Zn ppm	Au ppm	Ag ppm	Mo ppm
8-B-01	Grab	129	10	32	0.492	3.2	1
9-B-02	Grab	65	36	117	1.685	2.7	<1
7-B-03	Grab	179	14	34	0.475	3.9	<1
5-B-04	Grab	84	45	46	0.697	2.4	1
6-B-05	Grab	13	372	41	0.707	3.8	<1

PURPOSE

In March 2016 a prospecting program was completed on Tenure 1038694 (and 1042882) of the 2-claim BARN CLAIM GROUP. The purpose was to locate, if possible, historic reported geological features (Au, Ag, Cu bearing structures) as well as to prospect for unidentified outcrops and showings of significance. Subsequently Tenure 1042882 was staked to cover newly discovered mineralization.

Report information was obtained from Selected References and from a March 16, 2015 property examination.

PROSPECTING RESULTS - Outcrops

Sample 1-9 inclusive: confirmed historic local/property and regional geological mapping.

ASSAY RESULTS

Elevated levels of Au, Ag and Cu were found in Samples 1-5.

Elevated levels of Pb, Zn were found in Samples 1-5.

Elevated levels of As were found in Samples 1-5.

INTERPRETATIONS AND CONCLUSIONS

The description of mineralization in historic ARIS assessment report references is believed to be hosted in old trenches and drill holes located within the current BARN Claim Group.

Mineralization and geology within the BARN Claim Group was confirmed by sampling and assaying rocks from various newly discovered outcroppings during the March 2016 prospecting program on Tenures 1038694 and 1042882. This mineralization and geology appears to be similar to the previously reported mineralization on the BARN (MOT) property. The old trenches reported to be located within the BARN (MOT) claim group were not examined in March 2016.

SUMMARY AND RECOMMENDATIONS

The March 2016 field program confirmed historic reported geology and showed that significant mineralization is present in feldspar porphyry dykes within the host Cache Creek sediments within the BARN property.

There are numerous reported mineral occurrences within the BARN property which have not been examined by the writer.

A continuing program to locate and sample those is recommended. There is detailed geological mapping of the area by previous Operators which needs to be relocated in the field.

The 2016 field program assay results and the noted similarities of mineralization and host rocks to historic references indicate that a careful examination of the BARN property is warranted.

Therefore it is recommended by the Author that a comprehensive prospecting plan be created and executed in the field as soon as practical in order to confirm and map the extent of the new mineralization discovered on the BARN property and to locate and sample the historic reported mineralization within the BARN Claim Group.

ITEMIZED COST STATEMENT

Exploration Work type	BARN	Days		Totals
PROSPECTING & EXPLORATION				
Personnel (Name)* / Position	Field Days (list actual days)	Days	Rate	Subtotal*
Ken Ellerbeck / Owner	March 14, 2016	1	\$500.00	\$500.00
Q. Ellerbeck / Helper	March 14, 2016	1	\$250.00	\$250.00
			\$500.00	\$0.00
			\$250.00	\$0.00
				\$0.00
				\$0.00
				\$750.00
				\$750.00
Office Studies	List Personnel (note - Office only, do not include field days)			
Literature search	Ken Ellerbeck	1.0	\$500.00	\$500.00
Database compilation	Ken Ellerbeck	0.5	\$500.00	\$250.00
General research	Ken Ellerbeck	0.5	\$500.00	\$250.00
Report preparation	Ken Ellerbeck	1.0	\$500.00	\$500.00
Other (specify)				\$0.00
				\$1,500.00
				\$1,500.00
Ground Exploration Surveys	Area in Hectares/List Personnel			
Prospect	see Personnel Field Days			
Underground				
Trenches				\$0.00
				\$0.00
Geochemical Surveying	Number of Samples	No.	Rate	Subtotal
Soil	ALS MINERALS Vancouver	0.0	\$49.46	\$0.00
Rock	ALS MINERALS Vancouver	5.0	\$48.00	\$240.00
				\$240.00
				\$240.00
Transportation		No.	Rate	Subtotal
KM Kamloops-Property-return		50.00	\$0.95	\$47.50
KM SAMPLES TO LAB	March 16, 2016	51.00	\$0.95	\$48.45
				\$0.00
				\$95.95
				\$95.95
Accommodation & Food	Rates per day			
Hotel			\$0.00	\$0.00
Camp			\$0.00	\$0.00
Meals	2 man-days @\$40/day	2.00	\$40.00	\$80.00
				\$80.00
				\$80.00
Miscellaneous				
Telephone			\$0.00	\$0.00
Other (Specify)				
				\$0.00
				\$0.00
Equipment Rentals				
Field Gear (Specify)			\$0.00	\$0.00
Other (Specify)				
				\$0.00
				\$0.00
Freight, rock samples				
			\$0.00	\$0.00
			\$0.00	\$0.00
				\$0.00
				\$0.00
TOTAL Expenditures				\$2,665.95

STATEMENT OF AUTHOR'S QUALIFICATIONS

STATEMENT OF AUTHOR'S QUALIFICATIONS**KENNETH C. ELLERBECK, PMP**

I hold a BSc in Mechanical Engineering, University of Alberta, Edmonton, 1973.

I have completed University level introductory geology courses.

I hold a Certificate in Project Management from University of British Columbia, Sauder School of Business, 2010.

I hold a Project Management Professional designation – PMP – 1391810 – 2011.

I have been actively involved in all aspects of mineral exploration since 1980 in the Province of British Columbia.

I have managed staking and exploration programs since 1980 on my own mineral tenures as well as for tenures held by both private and publicly-held junior exploration companies.

My mineral exploration experience includes staking, prospecting, trenching, trench mapping, line cutting and grid construction, geochemical surveys, geophysical surveys, diamond drilling supervision and general exploration program supervision.

SIGNED



KENNETH C. ELLERBECK

LIST OF SELECTED REFERENCES

EMPR PF (Evaluation Report on the Barn Claim by A.F. Roberts. 1986 in Prospectus, Jaguar Equities Inc.)

BC Geological Survey, MEMPR, MINFILE No 092INE128
British Columbia Survey Branch, The Map Place.

Map 886 A, Nicola, (Geol.) Sc. Accomp. Memoir 249, Geol. Survey of Canada (1948).

Roberts, A.F., P.Eng., October 31, 1980 – AR 9881, Geochemical-Geophysical - Carlin 2 Claims, Vantex Resources Inc.,

Hopkins, D.E., B.A., P.Eng., AR3616, December 7, 1971, Geochemical Report, Copper Range.

Purdy C.P. P Eng., AR 4315, May 26, 1973, Geology and Geochemistry, Copper Range.

J B P Sawyer, P Eng., May 11 1976, Report on the Carlin 2 Claim Kamloops M D for United Mineral Services.

LIST OF SOFTWARE PROGRAMS USED

ADOBE PHOTOSHOP 7.0

PAINT for WINDOWS

ARIS MAPBUILDER – Map Data downloads

Imap BC – Map Data downloads

MtOnline - MINFILE downloads.

APPENDIX 1 SAMPLE PREPARATION AND METHOD OF ANALYSIS



ALS Canada Ltd.
 2103 Dollarton Hwy
 North Vancouver BC V7H 0A7
 Phone: +1 (604) 984 0221 Fax: +1 (604) 984 0218
 www.alsglobal.com

To: **KEN ELLERBECK**
 255 WEST BATTLE STREET
 KAMLOOPS BC V2C 1G8

Page: 1
 Total # Pages: 2 (A - C)
 Plus Appendix Pages
 Finalized Date: 29-MAR-2016
 Account: ELLERK

CERTIFICATE KL16040678

This report is for 5 Rock samples submitted to our lab in Kamloops, BC, Canada on 18-MAR-2016.

The following have access to data associated with this certificate:
 KEN ELLERBECK

SAMPLE PREPARATION	
ALS CODE	DESCRIPTION
WEI-21	Received Sample Weight
LOG-22	Sample login - Rcd w/o BarCode
CRU-QC	Crushing QC Test
PUL-QC	Pulverizing QC Test
CRU-31	Fine crushing - 70% <2mm
SPL-21	Split sample - riffle splitter
PUL-31	Pulverize split to 85% <75 um

ANALYTICAL PROCEDURES		
ALS CODE	DESCRIPTION	INSTRUMENT
ME-ICP41	35 Element Aqua Regia ICP-AES	ICP-AES
Au-AA23	Au 30g FA-AA finish	AAS

To: **KEN ELLERBECK**
 ATTN: **KEN ELLERBECK**
 255 WEST BATTLE STREET
 KAMLOOPS BC V2C 1G8

This is the Final Report and supersedes any preliminary report with this certificate number. Results apply to samples as submitted. All pages of this report have been checked and approved for release.

***** See Appendix Page for comments regarding this certificate *****

Signature: 

Colin Ramshaw, Vancouver Laboratory Manager

APPENDIX 2 ASSAY RESULTS



ALS Canada Ltd.
 2103 Dollarton Hwy
 North Vancouver BC V7H 0A7
 Phone: +1 (604) 984 0221 Fax: +1 (604) 984 0218
 www.alsglobal.com

To: KEN ELLERBECK
 255 WEST BATTLE STREET
 KAMLOOPS BC V2C 1G8

Page: 2 - A
 Total # Pages: 2 (A - C)
 Plus Appendix Pages
 Finalized Date: 29-MAR-2016
 Account: ELLERK

CERTIFICATE OF ANALYSIS KL16040678

Sample Description	Method Analyte Units LOR	WEI-21	Au-AA23	ME-ICP41	ME-ICP41	ME-ICP41	ME-ICP41	ME-ICP41	ME-ICP41	ME-ICP41	ME-ICP41	ME-ICP41	ME-ICP41	ME-ICP41	ME-ICP41	ME-ICP41
		Recvd Wt.	Au	Ag	Al	As	B	Ba	Be	Bi	Ca	Cd	Co	Cr	Cu	Fe
		kg	ppm	ppm	%	ppm	ppm	ppm	ppm	%	ppm	ppm	ppm	ppm	ppm	%
B-01		0.85	0.492	3.2	0.39	2880	10	90	<0.5	<2	5.70	<0.5	14	6	129	5.34
B-02		1.50	1.685	2.7	0.30	>10000	10	70	<0.5	<2	4.69	0.8	31	5	65	4.98
B-03		0.81	0.475	3.9	0.35	4270	10	70	<0.5	<2	5.47	<0.5	22	9	179	7.94
B-04		1.26	0.697	2.4	0.39	2090	10	70	0.5	3	8.1	<0.5	20	8	84	6.76
B-05		1.05	0.707	3.8	0.41	6880	<10	50	<0.5	<2	4.00	<0.5	16	12	13	5.57

***** See Appendix Page for comments regarding this certificate *****



ALS Canada Ltd.
 2103 Dollarton Hwy
 North Vancouver BC V7H 0A7
 Phone: +1 (604) 984 0221 Fax: +1 (604) 984 0218
 www.alsglobal.com

To: **KEN ELLERBECK**
 255 WEST BATTLE STREET
 KAMLOOPS BC V2C 1G8

Page: 2 - B
 Total # Pages: 2 (A - C)
 Plus Appendix Pages
 Finalized Date: 29-MAR-2016
 Account: ELLERK

CERTIFICATE OF ANALYSIS KL16040678

Sample Description	Method Analyte Units LOR	ME-ICP41	ME-ICP41	ME-ICP41	ME-ICP41	ME-ICP41	ME-ICP41	ME-ICP41	ME-ICP41	ME-ICP41	ME-ICP41	ME-ICP41	ME-ICP41	ME-ICP41	ME-ICP41	ME-ICP41
		Ga ppm	Hg ppm	K %	La ppm	Mg %	Mn ppm	Mo ppm	Na %	Ni ppm	P ppm	Pb ppm	S %	Sb ppm	Sc ppm	Sr ppm
B-01		<10	<1	0.20	<10	2.03	879	1	0.02	8	750	10	2.95	12	6	336
B-02		<10	<1	0.18	<10	1.63	903	<1	0.02	6	710	36	2.74	25	5	290
B-03		<10	<1	0.17	<10	1.99	1145	<1	0.03	19	670	14	6.27	26	7	347
B-04		<10	<1	0.18	10	0.78	2230	1	0.02	15	1060	45	2.70	11	4	409
B-05		<10	<1	0.11	10	1.44	1005	<1	0.05	10	860	372	2.53	31	7	180

***** See Appendix Page for comments regarding this certificate *****

EVENT # 5595635

BARN CLAIM GROUP

KEN ELLERBECK



ALS Canada Ltd.
 2103 Dollarton Hwy
 North Vancouver BC V7H 0A7
 Phone: +1 (604) 984 0221 Fax: +1 (604) 984 0218
 www.alsglobal.com

To: **KEN ELLERBECK**
 255 WEST BATTLE STREET
 KAMLOOPS BC V2C 1G8

Page: 2 - C
 Total # Pages: 2 (A - C)
 Plus Appendix Pages
 Finalized Date: 29-MAR-2016
 Account: ELLERK

CERTIFICATE OF ANALYSIS KL16040678

Sample Description	Method Analyte Units LOR	ME-ICP41	ME-ICP41	ME-ICP41	ME-ICP41	ME-ICP41	ME-ICP41	ME-ICP41
		Th	Ti	Ti	U	V	W	Zn
		ppm	%	ppm	ppm	ppm	ppm	ppm
B-01		<20	<0.01	<10	<10	16	<10	32
B-02		<20	<0.01	<10	<10	12	<10	117
B-03		<20	<0.01	<10	<10	29	<10	34
B-04		<20	<0.01	<10	<10	77	<10	46
B-05		<20	<0.01	<10	<10	54	<10	41

***** See Appendix Page for comments regarding this certificate *****

EVENT # 5595635

BARN CLAIM GROUP

KEN ELLERBECK

Page 44 of 48

March 29, 2016

KEN ELLERBECK

FILING PROOF ATTACHED


[Print and Close](#)
[Cancel](#)

Mineral Titles Online

Mineral Claim Exploration and Development Work/Expiry Date Change Confirmation

Recorder: ELLERBECK, KENNETH
CECIL (107608)
Recorded: 2016/MAR/18
D/E Date: 2016/MAR/18

Submitter: ELLERBECK, KENNETH
CECIL (107608)
Effective: 2016/MAR/18

Confirmation

If you have not yet submitted your report for this work program, your technical work report is due in 90 days. The Exploration and Development Work/Expiry Date Change event number is required with your report submission. **Please attach a copy of this confirmation page to your report.** Contact Mineral Titles Branch for more information.

Event Number: 5595635

Work Type: Technical Work
Technical Items: Prospecting

Work Start Date: 2016/MAR/17
Work Stop Date: 2016/MAR/18
Total Value of Work: \$ 2665.95
Mine Permit No:

Summary of the work value:

Title Number	Claim Name/Property	Issue Date	Good To Date	New Good To Date	# of Days Forward	Area in Ha	Applied Work Value	Submission Fee
1038694	BARNUM	2015/sep/20	2016/sep/20	2022/dec/01	2263	20.50	\$ 1310.81	\$ 0.00
1042882	PT	2016/mar/16	2017/mar/16	2022/dec/01	2086	20.50	\$ 1141.59	\$ 0.00

Financial Summary:

Total applied work value:\$ 2452.40

PAC name: KEN ELLERBECK
Debited PAC amount: \$ 0.0
Credited PAC amount: \$ 213.55

Total Submission Fees: \$ 0.0

Total Paid: \$ 0.0

Please print this page for your records.

The event was successfully saved.

Click [here](#) to return to the Main Menu.



Ministry of Energy, Mines & Petroleum Resources
Mining & Minerals Division
BC Geological Survey



Assessment Report
Title Page and Summary

TYPE OF REPORT [type of survey(s)]: TECHNICAL - PROSPECTING

TOTAL COST: \$2665.95

AUTHOR(S): KEN ELLERBECK

SIGNATURE(S): 

NOTICE OF WORK PERMIT NUMBER(S)/DATE(S):

YEAR OF WORK: 2016

STATEMENT OF WORK - CASH PAYMENTS EVENT NUMBER(S)/DATE(S):

5595635 MARCH 18, 2016

PROPERTY NAME: BARN

CLAIM NAME(S) (on which the work was done): BARNUM-1038694, PT-1042882

COMMODITIES SOUGHT: Au Ag Cu

MINERAL INVENTORY MINFILE NUMBER(S), IF KNOWN: 092INE128

MINING DIVISION: KAMLOOPS

NTS/BCGS: NTS 092I09E BCGS 092I070

LATITUDE: 50 ° 37 '37 " LONGITUDE: 120 ° 7 '23 " (at centre of work)

OWNER(S):

1) KEN ELLERBECK

2)

MAILING ADDRESS:

255 BATTLE STREET WEST, KAMLOOPS, BC V2C 1G8

OPERATOR(S) [who paid for the work]:

1) KEN ELLERBECK

2)

MAILING ADDRESS:

255 BATTLE STREET WEST, KAMLOOPS, BC V2C 1G8

PROPERTY GEOLOGY KEYWORDS (lithology, age, stratigraphy, structure, alteration, mineralization, size and attitude):

Argillite, Brecciated Argillite, Feldspar Porphyry Dike, Biotite Feldspar Porphyry, Granodiorite, UPPER TRIASSIC -NICOLA,

JURASSIC-WILD HORSE INTRUSION. Metasedimentary - Disseminated, Vein, Porphyry, Hydrothermal, Epigenetic -

Pyrite, Pyrrhotite, Molybdenite - Quartz, Carbonate minor

REFERENCES TO PREVIOUS ASSESSMENT WORK AND ASSESSMENT REPORT NUMBERS:

3616, 4315, 8635, 8739, 9881, 17556

Next Page

TYPE OF WORK IN THIS REPORT	EXTENT OF WORK (IN METRIC UNITS)	ON WHICH CLAIMS	PROJECT COSTS APPORTIONED (Incl. support)
GEOLOGICAL (scale, area)			
Ground, mapping			
Photo interpretation			
GEOPHYSICAL (line-kilometres)			
Ground			
Magnetic			
Electromagnetic			
Induced Polarization			
Radiometric			
Seismic			
Other			
Airborne			
GEOCHEMICAL (number of samples analysed for...)			
Soil			
Silt			
Rock			
Other			
DRILLING (total metres; number of holes, size)			
Core			
Non-core			
RELATED TECHNICAL			
Sampling/assaying			
Petrographic			
Mineralographic			
Metallurgic			
PROSPECTING (scale, area) 100m X 200m		1038694 1042882	\$2665.95
PREPARATORY / PHYSICAL			
Line/grid (kilometres)			
Topographic/Photogrammetric (scale, area)			
Legal surveys (scale, area)			
Road, local access (kilometres)/trail			
Trench (metres)			
Underground dev. (metres)			
Other			
TOTAL COST:			\$2665.95