

Event Number: 5610990
Dominion Creek Project.
African Queen Mines Ltd Soil Sampling, Upper
Dominion Creek, Atlin MD, BC Tenure # 1037417,
Centred at 59° 30.958' North, 133° 32.266' West,
NTS map sheet 104/N12.



Upper Dominion Creek, looking south.

Report By: Nicholas Clive Aspinall, P.Eng
Clive Aspinall Geological Services Inc.
Pillman Hill, Atlin, BC, V0W 1A0,
TEL: 250-651-0001. Email: ncaspinall@gmail.com

Field work: 14-16 July 2016
Report: 9th September 2016

Ministry of Energy, Mines & Petroleum Resources
Mining & Minerals Division
BC Geological Survey

Assessment Report
Title Page and Summary

TYPE OF REPORT [type of survey(s)]: Event Number: 5610990: Technical

TOTAL COST: \$ 4690.00

AUTHOR(S): NICHOLAS CLIVE ASPINALL, M.Sc., P.ENG

SIGNATURE(S): 

NOTICE OF WORK PERMIT NUMBER(S)/DATE(S): TENURE 1037417

YEAR OF WORK: 2016

STATEMENT OF WORK - CASH PAYMENTS EVENT NUMBER(S)/DATE(S): _____

PROPERTY NAME: TENURE 1037417, DOMINION CREEK, ATLIN MD

CLAIM NAME(S) (on which the work was done): TENURE 1037417

COMMODITIES SOUGHT: GOLD

MINERAL INVENTORY MINFILE NUMBER(S), IF KNOWN: N/A

MINING DIVISION: ATLIN

NTS/BCGS: NTS map sheet 104/N12.

LATITUDE: 59 ° 30.98 ' _____ " LONGITUDE: 133 ° 32.66 ' _____ " (at centre of work)

OWNER(S):

1) African Queen Mines Ltd 2) _____
1153 56th Street, Box 19040, Delta, BC, V4L 2P8.

MAILING ADDRESS:

AS ABOVE

OPERATOR(S) [who paid for the work]:

1) AFRICAN QUEEN MINES LTD 2) _____

MAILING ADDRESS:

1153 56th Street, Box 19040, Delta, BC, V4L 2P8.

PROPERTY GEOLOGY KEYWORDS (lithology, age, stratigraphy, structure, alteration, mineralization, size and attitude):

Atlin Ophiolitic assemblage, Atlin Accretionary Complex, Nakina Andesites-Basalts, Cache Creek sedimentary rocks, wedges of rocks, Southwest Faulting? Gold reported on LD Property.

REFERENCES TO PREVIOUS ASSESSMENT WORK AND ASSESSMENT REPORT NUMBERS: _____

29124, 13269, 15062, 12051, 18779, 17165, 13910

THIS REPORT	(IN METRIC UNITS)		APPORTIONED (incl. support)
GEOLOGICAL (scale, area)			
Ground, mapping _____			
Photo interpretation _____			
GEOPHYSICAL (line-kilometres)			
Ground			
Magnetic _____			
Electromagnetic _____			
Induced Polarization _____			
Radiometric _____			
Seismic _____			
Other _____			
Airborne _____			
GEOCHEMICAL (number of samples analysed for...)			
Soil 19 soil samples, 17 within Tenure 1037417		Tenure 1037417	\$ 4690.00
Silt _____			
Rock _____			
Other _____			
DRILLING (total metres; number of holes, size)			
Core _____			
Non-core _____			
RELATED TECHNICAL			
Sampling/assaying _____			
Petrographic _____			
Mineralographic _____			
Metallurgic _____			
PROSPECTING (scale, area) _____			
PREPARATORY / PHYSICAL			
Line/grid (kilometres) _____			
Topographic/Photogrammetric (scale, area) _____			
Legal surveys (scale, area) _____			
Road, local access (kilometres)/trail _____			
Trench (metres) _____			
Underground dev. (metres) _____			
Other _____			
		TOTAL COST:	\$ 4690.00

Event Number: 5610990

Event Number: 5610990
Dominion Creek Project.
African Queen Mines Ltd Soil Sampling, Upper
Dominion Creek, Atlin MD, BC Tenure # 1037417,
Centred at 59° 30.958' North, 133° 32.266' West,
NTS map sheet 104/N12.



Upper Dominion Creek, looking south.

Report By: Nicholas Clive Aspinall, P.Eng
Clive Aspinall Geological Services Inc.
Pillman Hill, Atlin, BC, V0W 1A0,
TEL: 250-651-0001. Email: ncaspinall@gmail.com

Field work: 14-16 July 2016
Report: 9th September 2016

Summary	3
Introduction and Terms of Reference	4
Reliance on other Experts	4
Property Description and Location	5
Accessibility, Climate, Local Resources, Infrastructure and Physiography	5
History	6
Regional Geological Setting	7
Summary Atlin Geology	7
Summary Dominion Creek Geology	7
Atlin Region, Mineral Deposit Types	
Hard-rock Gold-silver Mineralization within the Atlin Camp	8
Economic Minerals of Interest, Atlin Camp	8
Assessment Work, Dominion Creek 2016 Program	8
Sampling Method	
Sample Preparation, Analysis and Security	9
Data Verification	11
Adjacent Properties	11
Other Relevant Data	12
Interpretation and conclusions	12
Recommendations	13
References	31
Appendix A	
	Figures 1,2,3,4,5
Appendix B	
	Analyses VA16118740 Finalized
Appendix C	
	Statement of Costs
Appendix D	
	Certificate of Authorship

Summary

Mineral Claim Tenure 1037417 falls within the Atlin Gold Camp of NW-British Columbia, the traditional territory of the Taku Tlingit First Nation.

Two days were spent carrying out a rapid soil geochemical survey on 14th-16th July 2016.

A very small area, estimated less than 1.4 % of the tenures total area of 525.6902 hectares, was adequately covered.

No anomalous gold values were returned after testing by an approved Canadian mineral analytical laboratory.

Geochemical soil evaluation of the other 98.6 % of the tenure, therefore, is not conclusive.

Introduction and Terms of Reference

The Dominion Creek Project assessment report, covering mineral claim tenure 1037417, Atlin Mining Division, British Columbia has been prepared at the request of Mr. Irwin Olian CEO of African Queen Mines Ltd, with offices at 1153 56th Street, Box 19040, Delta, BC, V4L 2P8.

The work area falls within the Atlin gold camp of NW-British Columbia, the traditional territory of the Taku Tlingit First Nations, (TRTFN) Figure 1.

Two days were spent on 14th-16th July 2016, by the author, performing a reconnaissance to access the area, and collecting of 19 soil samples, Figures, 2 &3 in upper Dominion Creek valley.

In carrying out this assessment work and submitting this report, African Queens Mines Ltd is applying to BC. Mineral Titles for one year advance of tenure 1037417 to 20th July 2017.

This report details the above soil-sampling program.

Reliance on Other Experts

The author has been familiar with the Atlin gold camp since 1966, with offices in Atlin since 1967. Reliance on other sources and professionals include, but not limited to, the following:

- **Mr. Irwin Olian**, CEO of African Queen Mines Ltd, for exploration incentive and funding,
- **Anke Woodworth**, Terracad Geoscience Services Ltd. Manager / GIS Specialist, 409 Granville St. - Suite 880, Vancouver, BC, V6C 1T2, Canada, for figures presented in this report.
- Research of Minfile data at:
<http://www.em.gov.bc.ca/mining/geolsurv/minfile/default.htm>.
- Research of mineral titles at <http://www.em.gov.bc.ca/mining/geolsurv/mapplace> and <http://www.mtonline.gov.bc.ca>
- Review of geological maps and geological reports by geologists J.D. Aitkin, Chris H Ash and M. Mihalynuk , and others of the Federal and Provincial Surveys.
- ALS Global Minerals at 8081 Lougheed Highway Burnaby, BC V5A 1W9, and sample preparation laboratory at 8 Mt Sima Rd, Whitehorse, YT Y1A 0A8

Property Description and Location

Tenure 1037417 falls entirely within the historic Atlin gold camp in Northwest British Columbia Figure 1 and covers 525.6902 hectares. Mineral title is owned 100% by African Queen Mines Ltd. Details are given in Table 1.

Table 1.

Title Number	Claim Name	Owner	Map Number	Issue Date	Good To Date	Status	Area (ha)
1037417		281690 (100%)	104N	2015/jul/20	2016/jul/20	GOOD	525.6902

Tenure # 1037417, is centered at 59° 30.958' North, 133° 32.266' West, NTS map sheet 104/N12.

The average elevation of the tenure is 1300 metres, and therefore in an alpine setting.

Accessibility, Climate, Local Resources, Infrastructure and Physiography

Atlin, the most northerly community in British Columbia, lies east of the Coast Range Mountains approximately 140 kilometers east of Juneau, Alaska. It is situated on the east shore of Atlin Lake at an elevation of 2,190 feet (670m) ASL and is accessed from Jakes Corner and the Alaska Highway by a 92-kilometer part hardtop-part gravel road. Whitehorse, Yukon, located 82 kilometers to the northwest of Jakes Corner, provides most services and facilities required in support of mineral exploration, including an international airport that offers daily flights to Vancouver and other Western Canadian centers.

Atlin's climate is typical of northern British Columbia: January temperatures average -15° C and snowfall averages two metres; summers are pleasant with average temperatures of 20° C and variable amounts of precipitation. Precipitation is reported to approximate 30 millimeters during the summer months¹.

Historically, a BC Hydro diesel generating plant serviced Atlin but currently the community receives electrical power generated by a 2.1 megawatt Pelton twin turbine generator that draws water from Surprise Lake 16 kilometers up stream from the town². Excess power is present and could be available to commercial enterprises such as local mines.

Atlin has an abundance of fresh water resources from Atlin Lake, O'Donnell River, Pine Creek, Spruce Creek, Otter Creek, Snake Creek, Wilson Creek and other creeks. A skilled labour force for mining and mineral exploration is available locally in Atlin and in Whitehorse, Yukon.

¹ Atlin Centre Web

² Stuart Simpson, TRTFN Project Mgr, pers. comm. 2009

Following public and placer mine roads can gain access to Upper Dominion Creek from the community of Atlin to Spruce Creek, and then following a trail leading from the historic Nolan Mine shaft to Dominion Creek. Final access to tenure 1037417 can be gained on foot.

The Atlin region features topography significantly different from the coastal ranges, and consists of gently rounded mountains with relief approximating 1600 meters ASL. Vegetation below 1400 metres can be categorized as mixed northern boreal forest, with spruce, birch, jack pine, and poplar forests being predominant. Several varieties of willow and dwarf birch occur along major creek banks. Above 1400 metres balsam with scattered blue tree varieties predominate and give way to alpine buck-brush and alpine grasses. In the alpine above 1400 metres summer wild flowers blossom for short periods during the spring and summer months.

Summer season is short, with approximately 120 frost-free days. Geological fieldwork can commence by 15th June but should be completed by 15th September in alpine terrain, lower areas by 15th October.

History

Atlin became known as a productive Canadian placer gold camp in 1898, after the discovery by two prospectors, Miller and McLaren, found placer gold in paying quantities on Pine Creek³. Later gold seekers found impressive amounts of gold on adjacent creeks, notably Spruce, McKee, Otter, Ruby, Boulder and Birch Creeks, and lesser amounts on other Atlin area creeks. Production of placer gold, as determined by Holland (1950) from 1898 to 1946 is tabulated in Table 1.

Table 1. Reported Gold Production from Atlin Creeks. 1898-1946.

Ounces of Gold Produced 1898-1946	Creek Name
262,603	Spruce Creek
138,144	Pine Creek
67,811	Boulder Creek
55,272	Ruby Creek
46,953	McKee Creek
20,113	Otter Creek
14,729	Wright Creek
12,898	Birch Creek
15,624	All others, (21 Creeks)
634,147	Total

Since the 1980's, using heavy mechanized equipment, estimated annual gold production has increased substantially from selected Atlin creeks when the gold price is over US\$1000.00/oz.

Hard rock mineral exploration within Dominion Creek valley.

Within the Atlin gold camp, including Dominion Creek, hard rock mineral exploration only began in earnest in the 1960's.

³ Cairns, DD., Paper No. 26, 1910.

Canadian Johns-Manville Company Ltd entered the Atlin region in 1966, looking for asbestos, and later for molybdenum, tungsten, tin and uranium within the Surprise Lake Batholith, focusing on Ruby Creek, Boulder Creek, Birch Creek, Zenazi Creek, including the Gladys River area.

During 1983 to 1984, Standard Gold Mines Ltd carried out an extensive diamond-drilling program in addition to trenching on Dominion Creek. Their principal work was directed to a small hill situated on the LD Property, north and east of tenure 1037417.

Placer Dome Inc. in 1987 conducted a ten hole 1,399.3 metre-drilling program over Dominion Creek and adjacent Rant Creek

Faults, quartz veins and sulphide mineralization were intersected in a number of these drill holes, but no economic gold or silver values were obtained. The highest gold value reported was 0.63 ppm Au over a 1-metre length of drill core.

Between years 2005-2012 Blind Creek Resources Ltd, carried out limited soil sampling in the region North East of Tenure 1037417, and found scattered anomalous soils, with random highs greater than 100 ppb gold, but not enough to warrant follow-up.

Regional Geological Setting

Federal and provincial government geological reports, Minfile data and assessment report archive system (ARIS) information is available covering the geological setting and local geology of the Atlin Project. Much of the following information can be found from Ash, BCDM Bulletin 108, 2001.

Summary of Atlin Geology

The following five sections are quoted directly from Ash, BCDM Bulletin 108, and Ref: Figures The regional geology and legend is shown on Figures 4&5.

The geology of the Atlin Project area is divisible into two distinct litho-tectonic suite of rocks. A structurally higher, imbricated sequence of oceanic crustal and upper mantle lithology's termed the '*Atlin Ophiolitic Assemblage*', are tectonically superimposed over a lower and lithological diverse sequence of steeply to moderately dipping, tectonically intercalated slices of pelagic meta-sedimentary rocks with tectonized pods and slivers of meta-basalt. These rocks include Nakina basalt-andesite, dacite, and diorites, limestone, and greywacke. The latter rock type sequences fall within the '*Atlin Accretionary Complex*'.

Within the NTS 104/12N sheet coverage, these rocks are intruded, in the northwest by the Middle Jurassic calc-alkaline Fourth of July batholith and related quartz-feldspar porphyritic and melanocratic dike rocks (Mihalynuk, et al. 1992).

Summary of Dominion Creek Geology.

During field work covered by this report, no prospecting and out crop identification was made. However, predominant rocks identified by Provincial and Federal surveys indicate

south-west trending sequences of the *Atlin Accretionary Complex*', namely Nakina andesite-basalts, meta-sedimentary rocks, and narrow wedges of the *Atlin Ophiolitic Assemblage*'.

Dominion Creek channel, striking southwest, may be a reflection of an underlying fault zone.

Hard Rock Gold-Silver Mineralization within the Atlin Camp

Visible gold-silver showings in outcrop, with the exception of historic Ruffner mine site located 20 Km. north-east of the community of Atlin, are extremely rare in the Atlin Camp. Visible and/or analytical gold-silver rocks, however do exist as:

- Mesothermal analytical gold-quartz veins, (sometimes identified with listwanite alteration, or visible Pb, Cu and analytical Ag);
- Visible lead with associated analytical silver, and associated analytical gold
- Low sulphide analytical gold in bull quartz veins
- Visible gold associated with ultramafic bodies, (Yellowjacket Gold Mine)
- Analytical gold at the interface of '*Atlin Ophiolitic Assemblage* and *Atlin Accretionary Complex*' rocks.
- Analytical gold-silver in splay faults with skarn? associated sulphides within the Surprise Lake Batholith

Major fault zones, such as Pine Creek Fault, Boulder Creek Fault, Otter Creek Fault, Adera Fault⁴, and other less defined lineaments, in the opinion of the author and other geologists/prospectors, make-up good drilling targets for the source of placer gold mineralization. These creek fault zones, 95% of the time, are covered by as much 35 metres of glacial tills and glacial fluvial deposits.

Economic Minerals of Interest, Atlin Camp

The predominant mineral of interest in the Atlin Camp is placer gold, and it is estimated by the author that much more than 1,000,000 ounces gold has been produced from creeks east of Atlin over the past 110 years. During recent times, 2009-2015, the author estimates from 300 ounces gold to 30,000 ounces gold is being produced seasonally from selected Atlin creeks.

Gold nuggets may range from smaller than match head size to exceptional nuggets of 36 ounces. During 2009 season two gold nuggets found by a metallic detector on upper Otter Creek are reported to be in the 58 and 62-ounce range.

According to the author, Yellowjacket and the LD Property (GV-Shuksan,) are the two hard rock gold properties within the Atlin camp considered to be of merit. The LD Property is located immediately to the north-east of tenure 1037417.

Assessment Work, Dominion Creek, 2016 Program

⁴ Open File 1989-15a.

African Queen Mines Ltd. a week before tenure 1037417 was due to expire on 20th July 2016 contacted the author. Consequently a rapid geochemical soil survey was arranged with a defined budget.

The survey took place on 14th and 16th July 2016, with the first day being confined to a ground reconnaissance for best access to upper Dominion Creek. Four-wheel drive access is required from a point north of the tenure area. The actual soil geochemical survey was carried out on foot, within the upper Dominion Creek valley, adjacent to the main creek channel. This survey area was selected to sample soils, as opposed to glacial tills, which lie higher up on channel banks. Nineteen soil samples were collected.



Upper Dominion Creek Creek, looking south, within tenure 1037417 sampling area on 16th July 2016.



Looking north-east, towards the LD Property, Dominion Creek.

Sampling Method, Preparation, Analysis, & Security

Samples were collected using a geological pick; sample material was inserted into standard geochemical gusset bags. Each bag was then provided with corresponding ALS bar tag numbers, both within and outside the bag, then placed in an 8 by 12 inch plastic sample bag with one tag number clearly visible. Both bags were stapled closed.

Soil sample locations were noted by GPS 76 CSx model, recorded in UTM's. Sample numbers and locations were also recorded in the authors write-in rain field book. Location data was downloaded into Ozie Explorer software on returning to the author's office in Atlin.

Other than collecting 19 soil samples, no other work was done, with the exception of noting soil description, rock types observed in glacial tills, and photographing the survey area.

All 19 samples were kept under the supervision of the author and transported directly to sample preparation laboratories, Whitehorse, Yukon Territory. Pulp Samples were then forwarded under the laboratory's supervision to the main laboratory, ALS Global Minerals at 8081 Lougheed Highway Burnaby, BC V5A 1W9,

Geochemical Gold Analysis; Au by aqua regia extraction with ICP-MS finish.

Analysis was only requested for trace gold. In laboratory preparation procedures included

oven-drying, screening to remove large cobbles and organic material before analysis. Drying temperature was kept low to avoid the loss of volatile elements. Results are given within ranges Au 0.1ppb-0.1 ppm for a 25g nominal sample weight, (ALS Code: Au-ST43)

Analytical Results, with UTM locations are listed in Table 2.

Table 2

African Queen Mines Ltd, Dominion Creek, Atlin, MD, 16th July 2016							Au-ST43	
Soil Samples, Tenure 1037417							Au	Au
NAD27 Canada							ppm	ppb
Sample ID	Sector	Easting	Northing	Date	Elev M			
M 387701	8V	584226	6598738	16-07-16 12:45	1301.2	0.0043	4.3	
M 387702	8V	584206	6598673	16-07-16 13:10	1300.9	0.0117	11.7	
M 387703	8V	584247	6598634	16-07-16 13:20	1298.8	0.0024	2.4	
M 387704	8V	584154	6598615	16-07-16 13:31	1300.9	0.0035	3.5	
M 387705	8V	584096	6598581	16-07-16 13:46	1303.9	0.0026	2.6	
M 387706	8V	584164	6598556	16-07-16 14:06	1308.5	0.0023	2.3	
M 387707	8V	584097	6598530	16-07-16 14:28	1310	0.0032	3.2	
M 387708	8V	584038	6598486	16-07-16 14:52	1298.8	0.0029	2.9	
M 387709	8V	584039	6598436	16-07-16 14:55	1291.7	0.004	4	
M 387710	8V	583972	6598409	16-07-16 15:01	1294.5	0.0038	3.8	
M 387711	8V	584040	6598385	16-07-16 15:07	1288.7	0.004	4	
M 387712	8V	583982	6598350	16-07-16 15:14	1288.4	0.0034	3.4	
M 387713	8V	584008	6598299	16-07-16 15:20	1284.1	0.0069	6.9	
M 387714	8V	583949	6598273	16-07-16 15:25	1293	0.002	2	
M 387715	8V	583882	6598238	16-07-16 15:32	1295.4	0.0065	6.5	
M 387716	8V	583968	6598206	16-07-16 15:45	1304.5	0.0024	2.4	
M 387717	8V	583900	6598179	16-07-16 15:53	1310.3	0.0245	24.5	
M387718	8V	584244	6598778	16-07-16 16:00	1301.2	0.03	30	
M387719	8V	584466	6598740	16-07-16 16:07	1320.9	0.0036	3.6	

The above table shows two higher than average returned analyses, listed in red. Sample M387717 was collected from a gravel soil, and sample M387718 from a gravel soil proximal to upper Dominion Creek flow channel.

Soil samples M387718 and M387719 fall outside tenure 1037417.

Data Verification

A Canadian Industry recognized analytical laboratory analyzed samples, and the author is satisfied preparation and analytical work was done according to a high standard.

Adjacent Properties

Properties are:

- LD property

- Yellowjacket
- Lakeview
- Imperial

Other Relevant Data and Information

To the best of the author's knowledge, all relevant data and information on hard-rock mineral exploration on Dominion Creek, and important out crop/property showings have been outlined in this report.

Interpretations and Conclusions

Given the need for a rapid assessment survey to be completed a few days before tenure 1037417 expired, only a very small area, an estimated area less than 1.4 % of 525.6902 hectares, or approximately 7.5 hectares, was adequately covered.

Geochemical soil evaluation of the other 98.6% of the tenure, as well as potential hard rock gold in Dominion Creek, still remains unknown.

There are several other factors that should be discussed here. For instance Spruce Creek, into which Dominion Creek flows, has historically been one of the richest placer mine creeks in British Columbia.

Further more, at the junction of Dominion Creek and Spruce Creek, historic Nolan shaft is reported to a depth of 218 feet. Bedrock is also reported to be 218 feet below creek surface at this point⁵.

According to Mr. Jim Eastman III, who worked in that mine 1939-1945 with his father, Jim Eastman II, (of Eastman Flying Boat Fame), the Nolan Gold Mine had very rich

⁵ Aitkin, J.D, 1959.

pockets of placer gold, (pers. com, June 2016).



Mr. Jim Eastman III, Worked the Nolan Mine, located behind him, with his father from 1939-1946.
Photo: Clive Aspinall, 24th June 2016.

The question arises, “could some of this gold have been flushed out of Dominion Creek into Spruce Creek prior to the Wisconsin glaciation, 80,000 years ago?” It is also possible placer gold on McKee Creek could have been flushed from an upper Dominion Creek source.

Therefore, placer gold found in Spruce Creek, and McKee could have been sourced, in part, from Dominion Creek, and even areas within tenure 1037417.

The fact that the LD Property, one of the more interesting hard rock gold out crops associated with ultramafic rocks after the Yellowjacket property, lies immediately to the north east of tenure 1037417, suggests roots of a gold deposit. Deep drilling of the LD property may one day show a deeper, stacked gold deposit.

Recommendations

It is recommended a more comprehensive survey, with more surface coverage, be completed on tenure 1037417 before it is allowed to expire.

Due to the pervasive glacial till cover within tenure 1037417, further manual geochemical soil surveys are not the solution.


Prospecting, mapping, and rock sampling is recommended, in addition to heavy pan stream sampling for 2017 season. Later follow-up of diamond drilling is recommended if results prove encouraging.

Additional mineral claims should be acquired north east of tenure 1037417, should the opportunity arise.

Table 4. Recommended Budget for 2017, Tenure 1037417

AQM 2017 Budget for 2017 Season		
Geologist, 1 day, heavy pan sampling		500.00
Geologist, 3 days mapping, rock sampling		1,500.00
Vehicle/ATV....4 days		200.00
Rock analysis	40 samples	1,400.00
Drafting maps	8 hours	800.00
Report	3 days	1,500.00
Sub-Total		5,900.00
Admin. 15%		885.00
Sub-Total		6,785.00
GST 5%		339.25
Total		<u>7,124.25</u>

Mechanical auger soil drilling, sampling soil/till to bedrock is recommended for a later program should 2017 results prove encouraging.


Nicholas Clive Aspinall
Geologist
9th September 2016



References

- Andrew, K.P.E., (1985). Fluid Inclusion and Chemical Study of Gold-Quartz Veins in Atlin Camp, Northwestern British Columbia; unpublished B.Sc. thesis, University of British Columbia.
- Aitkin, J. D., (1958) Atlin Map Area, BC. Geological Survey of Canada, Memoir 307
- Ash, C.H., (1992)., Macdonald, R.W.J., and Arksey, R. L., (1992). Towards a Deposit Model for Ophiolite Related Mesothermal gold in British Columbia; in Geological Field Work 1991. B.C Ministry of Mines and Petroleum, Paper 92-1.
- Ash, C.H (1994). Origin and Tectonic Setting of Ophiolite Ultramafic and Related Rocks in the Atlin Area, British Columbia (NTS 104N). BC Ministry of mines and Petroleum, Bulletin 94-1.
- Ash, C.H., (1994). Geology of the Atlin Area, Northwest British Columbia, Geoscience Map 2004-4, accompanies Bulletin 94. Scale 1: 25,000.
- Ash, C.H., (2001) Relationship Between Ophiolites and Gold Quartz Veins in the North American Cordillera. Bulletin 108. British Columbia Ministry of Mines. Energy and Mineral Division. Geological survey Branch.
- Ash, C.H., (2003) Exploration Guidelines for gold Quartz Veins in the Canada-US Cordillera Power Point Presentation.
- Aspinall, NC. (2002) Assessment Report Covering preliminary geological investigations for Jade and Serpentes on and Around the Imperial Mineral Claim, (12 Units), Tenure number 379554, Monroe Mt., Located in the Atlin Mining Division, British Columbia, Canada.
- Aspinall, NC. (2004). Assessment Report Covering Preliminary Geological Investigations on Altered Ultramafic and Volcanic Rocks on the Imperial Mineral Claim, (12 Units), Tenure Number 379554, Monroe Mountain in the Atlin Mining Division, British Columbia, Canada.
- Aspinall, NC. (2005). Geological Reconnaissance of the Lakeview Mineral Claims, Tenure Nos. 408341 and 408342, Located 59 deg 38' N, 133 deg 27' W, NTS 104N063, Atlin MD., BC.
- Aspinall, N.Clive (2006) Assessment Report Covering Geological-Geochemical Investigations on Rocks and soils on the Imperial Mineral Claim, (12 Units), Tenure Number 379554, Monroe Mountain in the Atlin Mining Division, British Columbia,

Canada. Mineral Claim Tag#209661; Field work Date: 3rd July 2006 Report Dated: 6th November 2006

Aspinall, N.C. (2007). Imperial Mineral Claim, (12 Units), Tenure Number 379554, Monroe Mountain in the Atlin Mining Division, British Columbia, Canada. By N. Clive

Aspinall, M.Sc., P.Eng- (FMC#101024) Petrological work and rock descriptions by John G. Payne, Ph.D., P.Geo. Field work Date 3rd October 2007 Report Dated: 1st December 2007

Aspinall, N.Clive., (2008) Event 4241763. Assessment Report on Continued Geochemical and Petrology Investigations of The Imperial Claim, (12 unites) Tenure 379554, Munro Mountain in the Atlin Mining Division, British Columbia, Canada.

Aspinall, Clive. (2005) The 2005 Geochemical Orientation Survey on Blind Creek Resources Ltd Como Lake Claim Block, North of Atlin, BC. Centred at 59° 36.470' N and 133° 41.63' W. Atlin Mining Division, British Columbia Canada

Aspinall, N. Clive (2009) Event Number 4288235 (Continuation of Events 4251710 and 4248761) Blind Creek Resources Ltd Atlin Project Covering Geochemistry Surveys and Selected Reconnaissance Magnetometer Survey Work Done on Tenures 521544,521545,521549,521561,521563,521575,521593,521595,521599,512602,521603, 522314,592167,593091,593093,603127. Originally Known as the Como Lake - Main Block of Mineral Claims, Centred at Latitude 59° 31' 00''N and Longitude 133° 24' 00''W., NTS 104N/11-12Atlin Mining Division, British Columbia Canada

Aspinall, N. Clive (2009) Event 4380555; Mines Act Permit MX-1-664, Approval #09-1650350-0703, Blind Creek Resources Ltd.; Diamond Drilling Program (Part 1) on the Atlin Project (Combined Como Lake Block and Main Block), Atlin, BC Centered at 59° 31.629' N & 133° 23.055' W; Atlin Mining Division, British Columbia Canada; For Blind Creek Resources Ltd.

Aspinall, N. Clive (2009) Event 4408671 Mines Act Permit MX-1-664, Approval #09-1650350-0703, Blind Creek Resources Ltd Diamond Drilling Program (Part II) on the Atlin Project (Combined Como Lake Block and Main Block) Atlin, BC Centered at 59° 31.629' N & 133° 23.055' W., Atlin Mining Division, British Columbia Canada

Aspinall, N., Clive and Coster, Ian. (2010). Event #468269. Boulder 1 Mineral Claim, (Tenure 606518). Atlin Project. Soil Rock Geochemical and Geological Survey South Facing Slope, Ruby Mountain, Atlin Mining Division, British Columbia. Assessment Work Covering Tenure # 606518 (Boulder Claim) Centered at Latitude 59 40 North, Longitude 133 25 West, or UTM coordinates 6614000N, 591500E (NAD 83, zone 8).

Aspinall, Nicholas Clive., Coster, Ian P.D.A., (2010). Event 4809185 Mines Act Permit MX-1-664, Approval #09-1650350-0703 Blind Creek Resources Ltd. Diamond Drilling Program (Part III) on the Atlin Project (Combined Como Lake Block and Main Block), Atlin, B.C. Centered at 59° 31.629' N & 133° 23.055' W Atlin Mining Division, British Columbia Canada for Blind Creek Resources Ltd, 15th Floor-675 West Hastings Street, Vancouver, BC. Canada, V6B 1N2

Aspinall, Clive., Geological Services Inc. (2012) Mineral claims on Consolation-Dominion-Otter-Spruce Creeks and Observations on McKee Creek, within Historic Atlin Placer Gold Camp, Tenures 521562,521563,521545, 521575, 521591, 521594, 731042, 731082, 731102,731122, 889485, 889487,889488, 889490, NTS 104N Centered at 59° 31.629' N & 133° 23.055' W Northwest British Columbia, Atlin Mining Division, British Columbia, Canada For Blind Creek Resources Ltd, 15th Floor-675 West Hastings Street, Vancouver, BC. Canada, V6B 1N2

Bateman, Alan, M., (1959). Economic Mineral Deposits. Second Edition. John Wiley and Sons. New York-London.

BC MinFiles Master Report, CD-ROM, December 1998.

Bloodgood, Mary Anne., Bellefontaine, Kim A., (1990). Geology of the Atlin Area, (Dixie Lake and Teresa Island, 104N/6 and parts of 104N/54).

Bozek, J., (1989). Trace Element Geochemistry and Carbonate Mineralogy of the Pictou and Yellowjacket showings, Atlin, B.C. thesis, Memorial University of Newfoundland.

Cairnes, D.D. (1910). Portions Of The Atlin District, B.C.Sessional Paper No 26.Geological Survey Branch. Department of Mines, Ottawa.

Cunningham, L.D.; (1986). Geochemical and Geophysical Report on the "O" Claims, Atlin Mining Division, and NTS 104 N/11W, 12E. Ezekiel Explorations Ltd., Assessment Report 15,253.

Dandy, Linda, (1987). Diamond Drilling Report on the Lakeview Property, Atlin Mining Division, NTS 104 N/11W. Mark Management. Assessment Report 15,686.

Dandy, Linda, (1987). Geological, Geochemical and Geophysical Report on the "O" Claims, Atlin Mining Division, and NTS 104 N/11W. Ezekiel Explorations Ltd., Assessment Report 16,312.

Dandy, Linda. (2005). Technical Report On The Atlin Gold Property, Atlin Mining Division, BC. For MuskoX Mineral Corp., Suite 120, 3442-118 Ave SE, Calgary, Alberta, T2Z 3X1.

Dandy, Linda., (2007). Geological and Geochemical Report on the LD Property, for Prize Mining Corp. 3004 Ogden Road S.E.Calgary, AB. T2G 4N5. Map sheet 104N.053. Latitude 59 31N Longitude 133 28 E, UTM Zone 8-586000E., 6599000N, Atlin Mining Division, B.C.,

Davies, Brad. Justason, Angelique., (2007) ARIS 28,933. Technical Report, 2006 Exploration Program on the Como Lake Claim Group, Atlin Mining Division, NTS 104N 12, Tenures 521602, 521603, 521604, and 525456.

GEM systems -19T v7.0 Instruction Manual., (March 2008).

Gordy, S.P, (1991). Teslin Map Area, a new Geological Project in southern Yukon; in Current Research, Part A. Geological survey of Canada, Paper 91-1A.

Hansen, L., Williams, S., Anderson, R.G., and Dipple, G.M (2006).Bedrock Geology, Monarch Mountain area (NTS 104N 12), British Columbia, Geological Survey of Canada, Open file 5268, Scale 1:10,000.

Holland, S.S., (1950). Placer Gold Production of British Columbia. B.C Ministry of Energy, Petroleum Resources, Bulletin 28, pp.89.

Robertson, W.F. (1899). Cassiar District; In Annual Report of the Minister of Mines, 1898, BC Department of Mines, pp 985-991.

Leaming, S., (1980). Studies of Ultramafic rocks in Dease Lake area, British Columbia, in Current Research, Part A. Geological Association of Canada. Paper 80-1A.

Lefebure, D.V., and Gunning, M.H., (1989). Yellowjacket; in Exploration in British Columbia, 1987, B.C. Ministry of Energy Mines and Petroleum Resources. Part B. B87-B95.

Lefebure, D.V., and Gunning, M.H., (1989). Geological Compilation Map of the Atlin Area, NTS 104N/12E & 11W; B.C. Ministry of Energy Mines and Petroleum Resources. Open File Map 1989-24.

Levson, V.M., Kerr, D.E., Lowe, C., and Blyth, H. (2003). Quaternary Geology of the Atlin Area, British Columbia Geological Survey Branch, Geoscience Map 2003-1 and Geological Survey of Canada, Open File 1562, Scale 1:50,000.

Levison, M. Victor., Blyth, Heather., (1993). Applications of Quaternary Geology to placer Deposit Investigations in Glaciated Areas; A case Study, Atlin, British Columbia.

Levison, M. Victor., Blyth, Heather., (2001). Formation and preservation of a Tertiary to Pleistocene fluvial gold placer in northwest British Columbia.

Livgard, Egil., (1991). Diamond Drilling on the Pictou Property, Atlin Mining Division, Atlin BC. A/R 21869.

Marud, D.E., (1988a). Summary Report on Diamond Drilling, Beama and Adjacent Claims, north and South Groups, Yellowjacket Property, Atlin Mining Division, Volume 1 of 111, Ministry of Energy, Mines and Petroleum Resources. Assessment Report 17295

Marud, D.E., (1988b). Summary Report on Diamond Drilling, Arent 1, Arent 2 and Adjacent Claims, north and South Groups, Yellowjacket Property, Atlin Mining Division, Volume 1 of 1V, Ministry of Energy, Mines and Petroleum Resources . Assessment Report 18608

Mark, David, Payie, G, (2007) A Mobile Metal Ion (MMI), Geochemical Soil Sampling Assessment Report on the, Main Block Claim Group Atlin Project Atlin Mining Division NTS 104K/08 Latitude 59° 29' 58" North Longitude 133° 24' 31" West Owner: Blind Creek Resources Ltd. 15th Floor -675 West Hastings Vancouver, British Columbia V6B IN2

McIvor, Duncan (1988) Summary Report: Geological Mapping and Lithological Sampling Programs on the Lear Property, (West Claim Group). Atlin Mining Division, British Columbia. Assessment Report # 17,495.

McIvor, Duncan (1988). 1988 Summary Report. Mineral Exploration Activity on the Heart of Gold Property, (Porsche, Millionaire, Goldstar 1, Goldstar 2, Anna 1-8 Mining Claims). Atlin Mining district, British Columbia. A/R 17,997 (part 1 of 3, part 2 of 3).

Mihalynuk, M.G., Ambrose, T.K., Davine, F.A.M. , Johnson, S.T., (2010). Atlin Gold Nuggets Containing Mineral Matter; Implications for Lode Gold Exploration.

Monger, J.W.H., (1977a)., Upper Paleozoic rocks of the Western Canadian Cordillera and their Bearing on Cordilleran Evolution; Journal of Earth Sciences, Volume 14.

Monger, J.W.H., (1977b)., The Triassic Takla Group in McConnell Creek Map Area, North Central British Columbia, Geological survey of Canada, Paper 76-29.

Monger J.W.H. (1975). The Upper Paleozoic rocks of the Atlin Terrane, northwest British Columbia and South Central Yukon, GSC Paper 74-47.

Murton, Jeff C., Woods, Dennis V. Woods. (1988). Canova Resources Ltd. Geophysical Report on an Airborne Magnetic and VLF-EM Survey, Millionaire, Porsche, Gold Star 1, Gold Star 2, and Anna 1-8 claims, Atlin Mining Division., Latitude 59 33 N., Longitude 133 38 W, NTS 104N/12E.

Orchard, M.J. (1991): Conodonts, time and Terranes; An Overview of the Biostratigraphic Record of Western Canadian Cordillera, Orchard, M.J and McCracken A.D., Editors. Geological Survey of Canada. Bulletin 417.

Rees, C.J., (1989). Pictou; in Exploration in British Columbia, 1988. B.C. Ministry of Energy, Mines and Petroleum Resources. Part B.

Pautler, Jean (2010). Technical Report on the Wann river Project within the Tagish Lake Group, (Whine, Tagish#1, 5 &6., Lower Engineer 1 &2, Wann #1, Tagish Lake southwest claims), NTS 104M/8, Latitude 59 27' N Longitude 134 14.5' w, Atlin Mining Division for Blind Creek Resources Ltd, 15th Floor-675 West Hastings Street, Vancouver, BC. Canada, V6B

Payie, Garry. (2008) Technical Report on the Main Block Claim Group Atlin Project Atlin Mining Division NTS 104K/08. Latitude 59° 29' 58" North Longitude 133° 24' 31" West Owner: Blind Creek Resources Ltd. 15th Floor -675 West Hastings Vancouver, British Columbia V6B IN2

Payie, Garry. (2008-submitted to Blind Creek as a 43-101 report). Technical Report on the Main Block Claim Group Atlin Project Atlin Mining Division NTS 104K/08. Latitude 59° 29' 58" North Longitude 133° 24' 31" West Owner: Blind Creek Resources Ltd. 15th Floor -675 West Hastings Vancouver, British Columbia V6B IN2

Sack, Patrick, J and Mihalynuk, Mitchell, G., (2003?). Proximal Gold-Cassiterite Nuggets and Composition of Feather Creek Placer Gravels; Clues to A lode Source Near Atlin, B.C. B.C Ministry of Energy, Petroleum Resources paper

Souther, J.G., (1971). Geology and Mineral Deposits of Tulsequah Map Area, British Columbia. Geological Survey of Canada, Memoir 362. GSC Memoir 37, 1913.

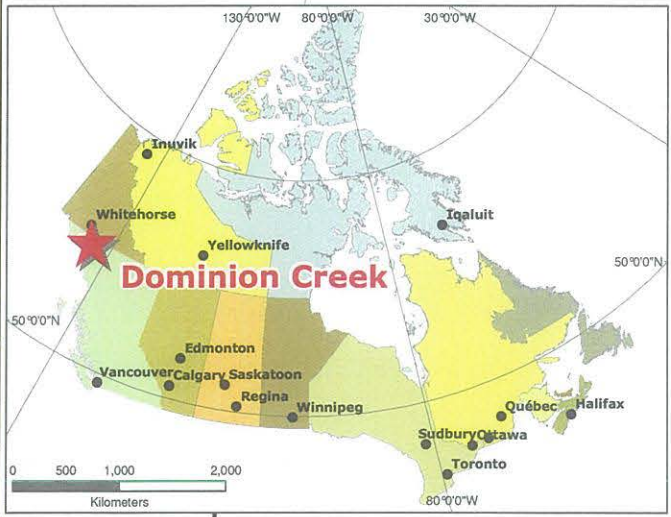
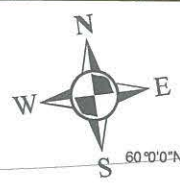
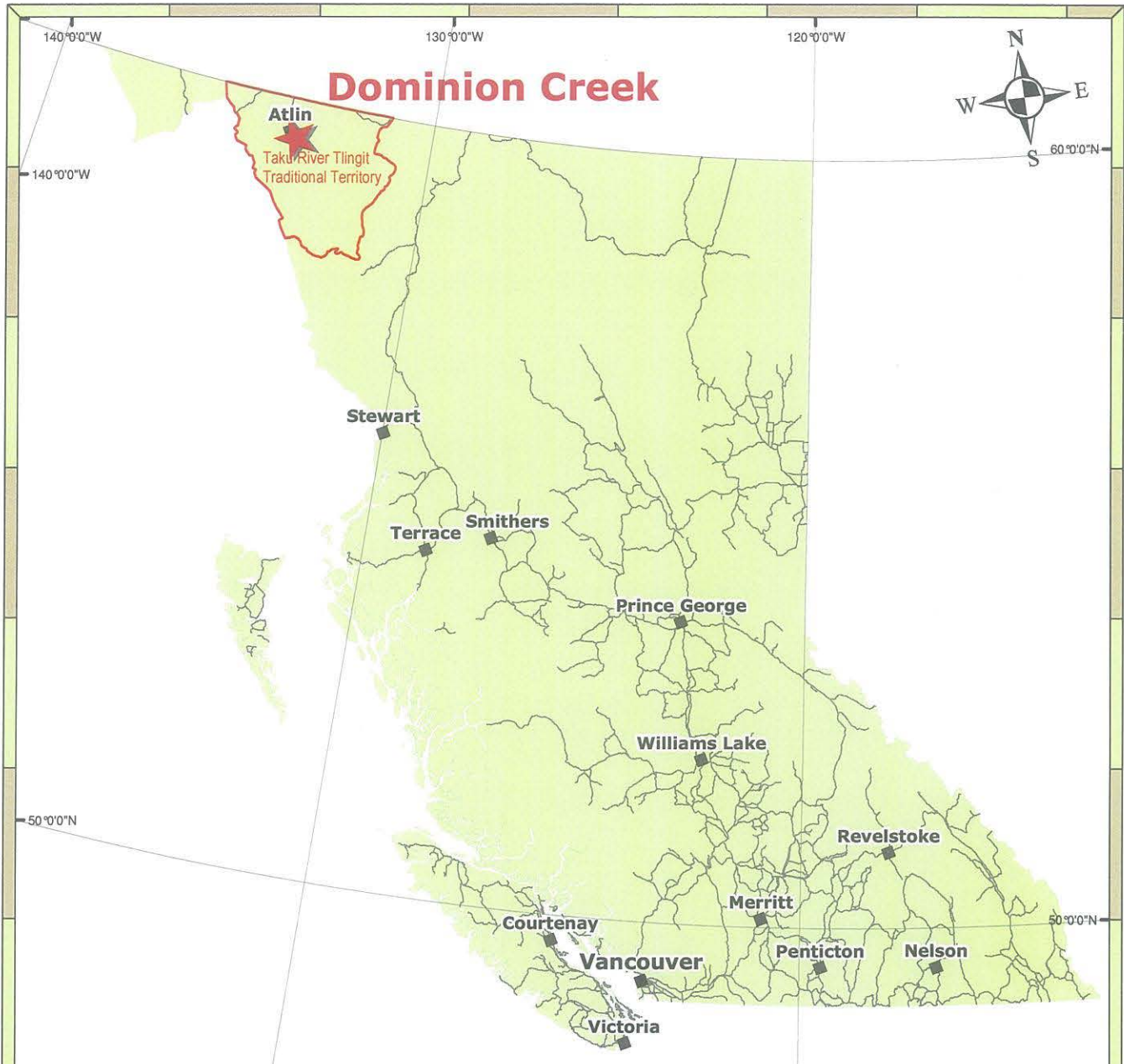
Tempelman-Kluit, D.J, (1979). Transported Cataclastite Ophiolite and Granodiorite in Yukon. Evidence of Arc-Continent Collision; Geological Survey of Canada, Paper 79-4

Terry, J. (1977). Geology of the Nahlin Ultramafic Mafic Body, Atlin and Tulsequah Map Areas, Northwestern British Columbia; in Current Research, Geological survey of Canada. Paper 77-1A.

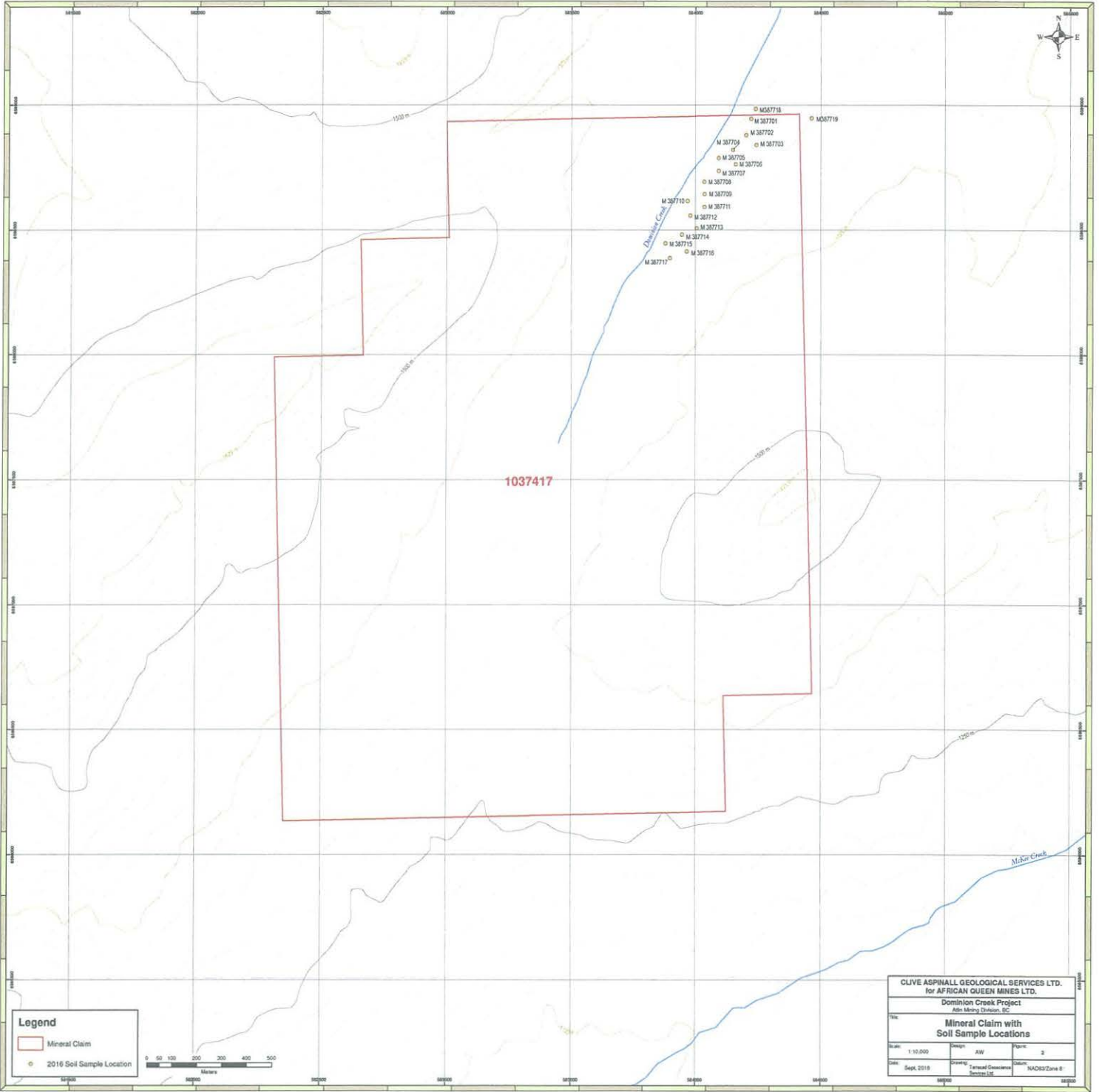
Troup, A.G., and Wong., C, (1984). Geochemical, Geological and Geophysical Report on the Shuksan Property, Standard gold Mines Ltd., Assessment Report 1310a

Appendix A

Figures



CLIVE ASPINALL GEOLOGICAL SERVICES LTD. for AFRICAN QUEEN MINES LTD.		
Dominion Creek Project Atlin Mining Division, BC		
Title:		
Project Location in BC		
Scale: 1:8,500,000	Design: AW	Figure: 1
Date: Sept, 2016	Drawing: Terracad Geoscience Services Ltd.	Datum: Long/Lat

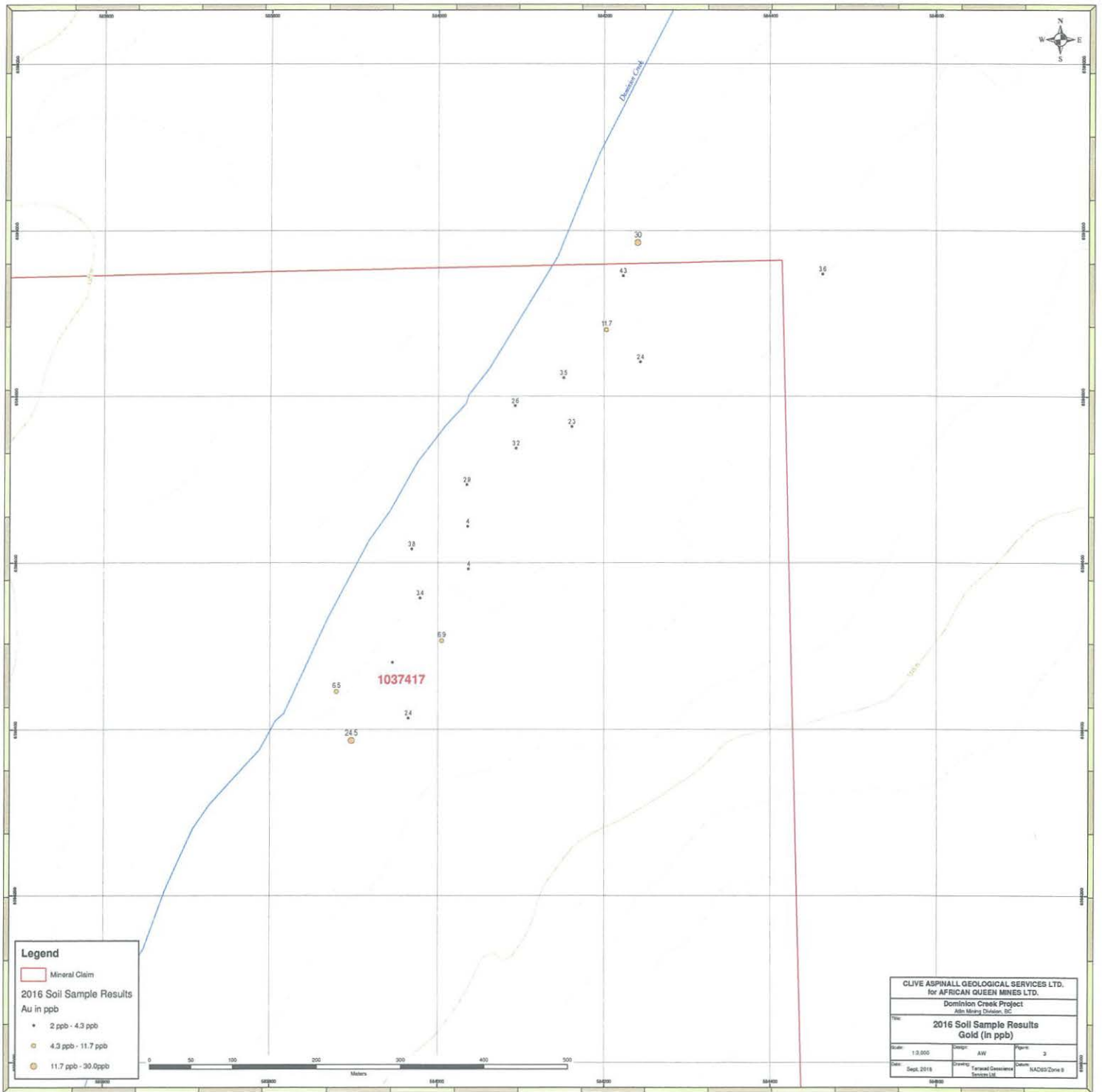


Legend

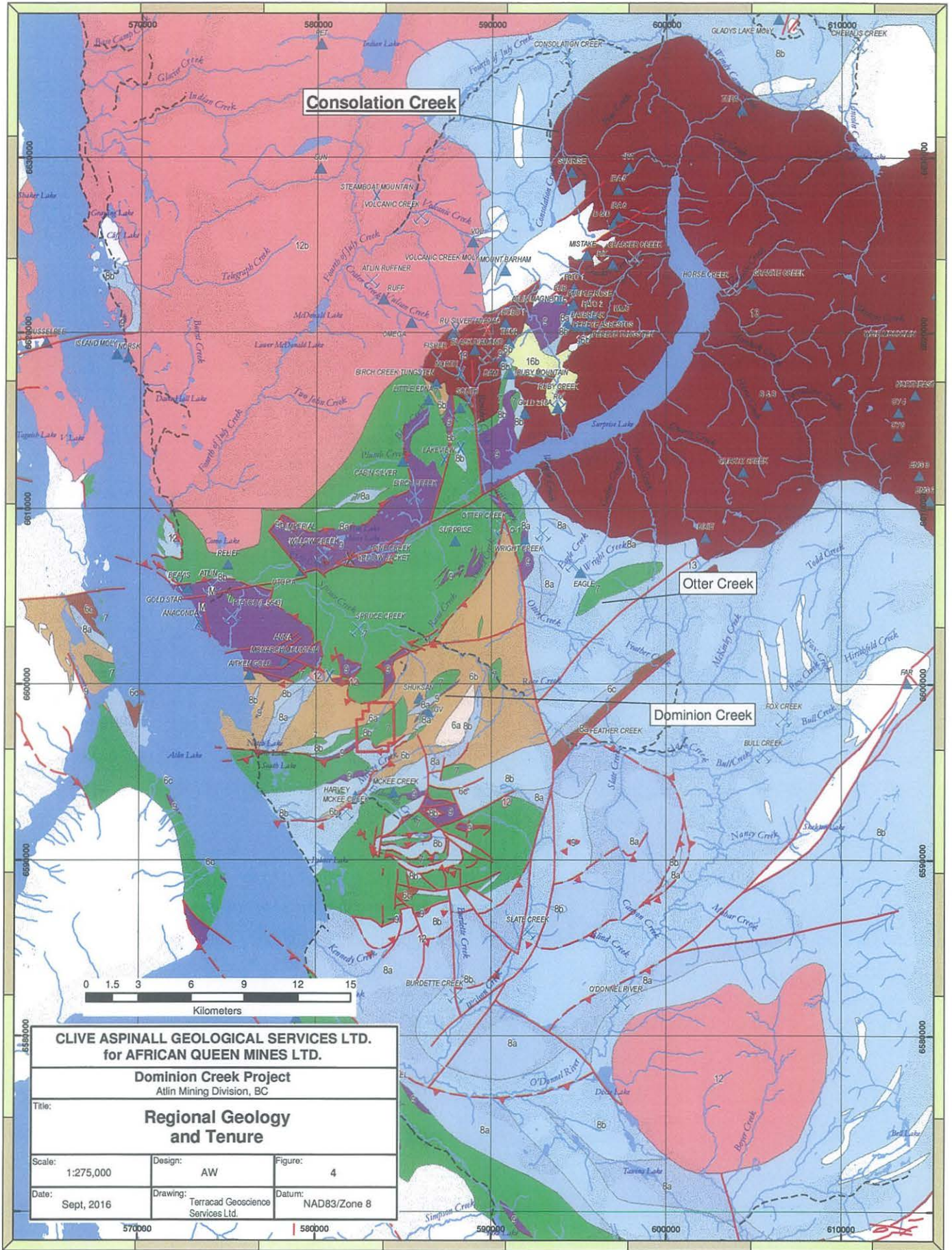
- Mineral Claim
- 2016 Soil Sample Location



CLIVE ASPINALL GEOLOGICAL SERVICES LTD. for AFRICAN QUEEN MINES LTD.			
Dominion Creek Project Athabasca Division, BC			
Title: Mineral Claim with Soil Sample Locations			
Scale:	1:10,000	Project:	AW
Date:	Sept. 2016	Drawn by:	Parvath Ganesan Suresh Lal
		Figure:	2
		Sheet:	NAD83 Zone 8



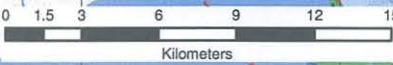
A horizon, 10 cm to 30 cm.
depth



Consolation Creek

Otter Creek

Dominion Creek



CLIVE ASPINALL GEOLOGICAL SERVICES LTD. for AFRICAN QUEEN MINES LTD.		
Dominion Creek Project Atlin Mining Division, BC		
Title: Regional Geology and Tenure		
Scale: 1:275,000	Design: AW	Figure: 4
Date: Sept, 2016	Drawing: Terracad Geoscience Services Ltd.	Datum: NAD83/Zone 8

Legend

 Quaternary Unit

Tertiary and Quaternary

Magnesite



Paleocene



Olivine Basalt and Scoria (16b)

Cretaceous



Alaskite undifferentiated (13)

Jurassic - Coast Intrusions



4th July Batholith Megacrystic Granite (12b)



Undifferentiated Granite Rocks (12)

Middle Triassic to Early Jurassic



Argillite, greywacke, wacke, conglomerate, turbidites (6a)

Carboniferous to Triassic



Sedimentary Rocks undivided (6b)

Upper Permian to Jurassic



Mudstone/laminate fine
Clastic sedimentary Rocks (6c)

Upper Mississippian to Permian



Nakina Formation: Andesite-basaltic Rocks (7)

Mississippian to Triassic

Kedahada Formation: Limestone



Marble, Calcareous sedimentary Rocks (8a)

Kedahada Formation: Chert



Siliceous argillite, siliciclastic Rocks (8b)



Ultramafic Rocks (9)



Gabbro (9b)

 Mineral Claim

Fault Type

 Fault

 Normal Fault

 Thrust

MinFile Location

 Past Producer - Placer

 Past Producer - Hard Rock

 Producer

 Prospect - other

 Prospect - Hard Rock

 Developed Prospect

 Showing

 Anomaly

CLIVE ASPINALL GEOLOGICAL SERVICES LTD. for AFRICAN QUEEN MINES LTD.		
Dominion Creek Project Atlin Mining Division, BC		
Title: Legend to accompany Regional Geology		
Scale:	Design: AW	Figure: 5
Date: Sept, 2016	Drawing: Terracad Geoscience Services Ltd.	Datum:

Appendix B

Analyses

VA16118740 - Finalized

CLIENT : "QUEAFR - African Queen Mines"

of SAMPLES : 19

DATE RECEIVED : 2016-07-22 DATE FINALIZED : 2016-08-12

PROJECT : "DOMINION CREEK-1037417"

CERTIFICATE COMMENTS : ""

PO NUMBER : " "

Au-ST43

SAMPLE	Au
DESCRIPTION	ppm
M387701	0.0043
M387702	0.0117
M387703	0.0024
M387704	0.0035
M387705	0.0026
M387706	0.0023
M387707	0.0032
M387708	0.0029
M387709	0.004
M387710	0.0038
M387711	0.004
M387712	0.0034
M387713	0.0069
M387714	0.002
M387715	0.0065
M387716	0.0024
M387717	0.0245
M387718	0.03
M387719	0.0036

Appendix C

Costs of 2016 assessment Work

African Queen Cost for Mineral Claim Tenure 1037417, Dominion Creek, Atlin MD						
Personnel	Hours	\$Rate/hour	Samples	Analysis Cost /Sample	Total Can	Field/Rep/\$
					\$	
Field Work						
Geologist	16	62.5			1,000.00	
Vehicle	16	28.5			456.00	
Analyses			19	35	665.00	
Tool Rentals					100.00	
Sample Bags					19.00	
Report						
Geologist	24	62.5			1,500.00	
Drafting						
maps	10	80			800.00	
Reproduction					150.00	
Sub Total					4,690.00	
GST/5%					234.5	
Total					4,924.50	

Appendix D

Certificate of Authorship

I, Nicholas Clive ASPINALL, P.Eng. of Pillman Hill, the community of Atlin British Columbia, do hereby certify that:

I am an independent consulting geologist with offices at the above addresses

I am a graduate of McGill University, Montreal, Quebec, with B.Sc degree in Geology (1964), and a Masters degree (1987) from the Camborne School of Mines, Cornwall, England, in Mining Geology.

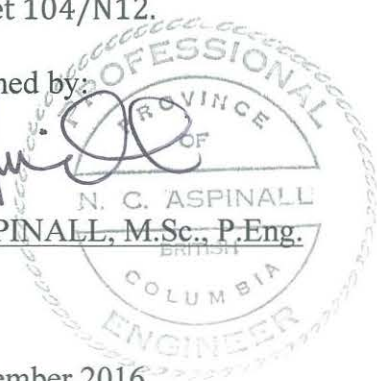
I am registered member in good standing of the Associations of Professional Engineers and Geoscientists in the province of British Columbia.

I have practiced mineral exploration for 50 years since graduation from McGill University. I am familiar with the geology of the Atlin area since 1966 and have an office based in Atlin from 1968.

I have absolutely no material interest in African Queen Mines Ltd, or Tenure 1037417.

I am the author of Report: Event Number: 5610990. Dominion Creek Project. African Queen Mines Ltd Soil Sampling, Upper Dominion Creek, Atlin MD, BC Tenure# 1037417, Centred at 59° 30.958' North, 133° 32.266' West, NTS map sheet 104/N12.

Originally Signed by:



N. C. ASPINALL

N. CLIVE ASPINALL, M.Sc., P.Eng.
Geologist

Dated 9th September 2016